



# Yamaha 15FMH 2003

## Parts Manual

[www.floodmarine.co.uk](http://www.floodmarine.co.uk)

+44 2882 246 539

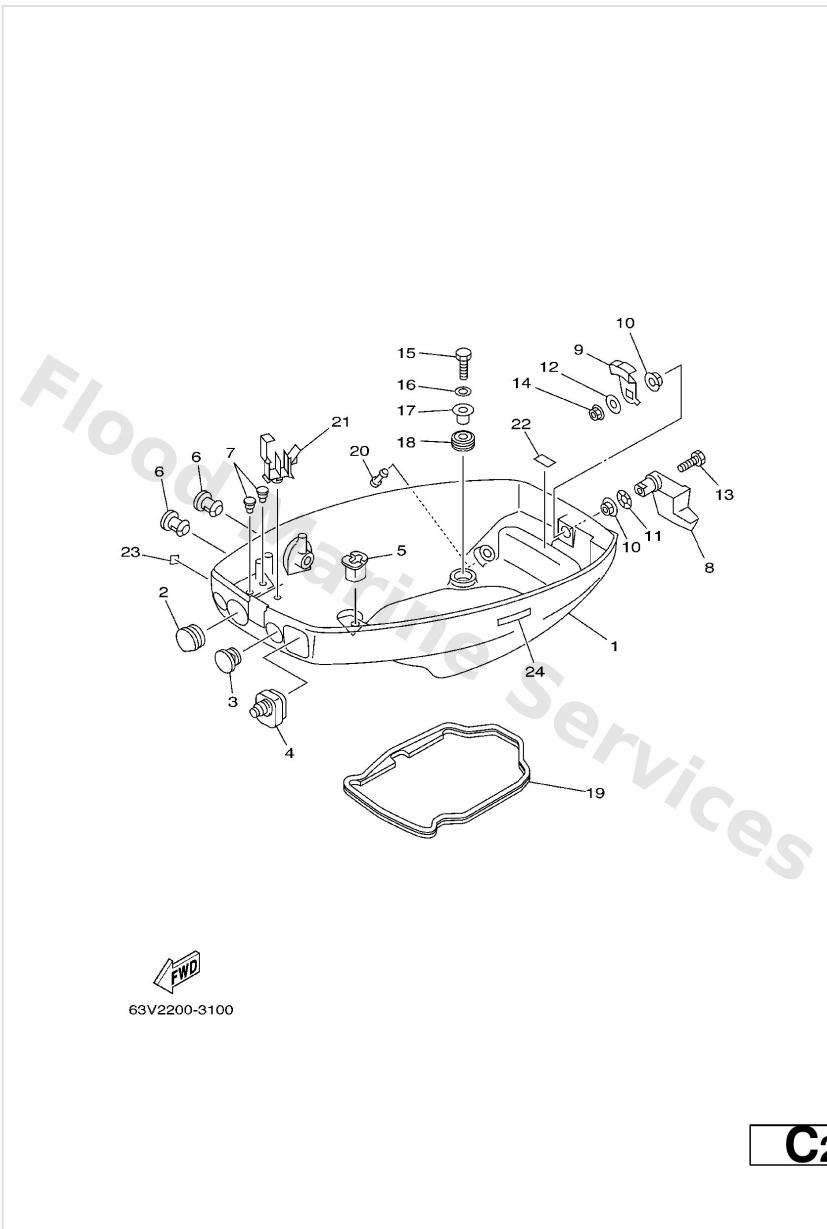
Authorised Yamaha Dealers



# Contents

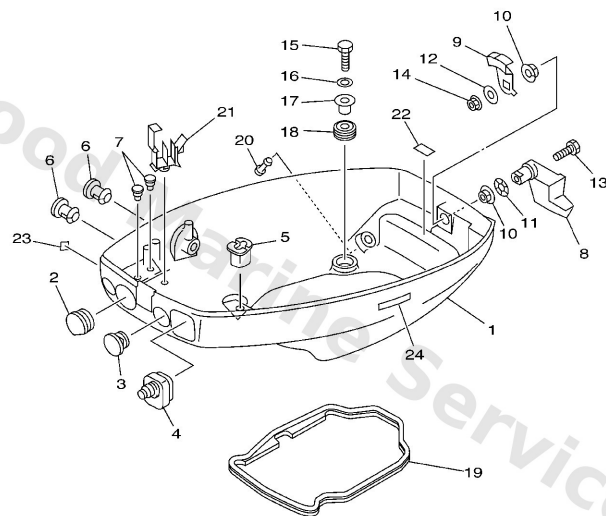
<b>BOTTOM COWLING</b>	3
<b>BRACKET 1</b>	5
<b>BRACKET 2</b>	9
<b>CARBURETOR</b>	11
<b>CONTROL</b>	14
<b>CRANKSHAFT. PISTON</b>	17
<b>CYLINDER. CRANKCASE</b>	20
<b>ELECTRICAL</b>	22
<b>FUEL</b>	24
<b>FUEL TANK</b>	25
<b>GENERATOR</b>	27
<b>INTAKE</b>	28
<b>LOWER CASING. DRIVE 1</b>	30
<b>LOWER CASING. DRIVE 2</b>	35
<b>REMOTE CONTROL ATTACHMENT</b>	37
<b>REPAIR KIT 1</b>	39
<b>REPAIR KIT 2</b>	41
<b>STARTER</b>	43
<b>STEERING</b>	45
<b>TOP COWLING</b>	48
<b>UPPER CASING</b>	50

## Bottom Cowling



Ref	Part	
1	<a href="#">63V-42711-03-4D</a> Cowling, bottom	<a href="#">Buy now</a>
2	<a href="#">682-42724-00</a> Grommet	<a href="#">Buy now</a>
3	<a href="#">682-42725-02</a> Grommet	<a href="#">Buy now</a>
4	<a href="#">63V-42726-00</a> Grommet	<a href="#">Buy now</a>
4	<a href="#">65F-42726-00</a> Grommet FOR SIDE SHIFT	<a href="#">Buy now</a>
5	<a href="#">682-42727-00</a> Grommet	<a href="#">Buy now</a>
6	<a href="#">6G1-42748-00</a> Grommet FOR SIDE SHIFT	<a href="#">Buy now</a>
7	<a href="#">90480-06M19</a> Grommet (6e3)	<a href="#">Buy now</a>
8	<a href="#">63V-42815-01-4D</a> Lever, clamp	<a href="#">Buy now</a>
9	<a href="#">6E7-42816-00</a> Lever, clamp 2	<a href="#">Buy now</a>
10	<a href="#">90386-12M45</a> Bushing (6g1)	<a href="#">Buy now</a>
11	<a href="#">90206-12052</a> Washer, wave (666)	<a href="#">Buy now</a>
12	<a href="#">90201-06068</a> Washer,plate (6k8)	<a href="#">Buy now</a>
13	<a href="#">97095-06025</a> Bolt	<a href="#">Buy now</a>
14	<a href="#">95380-06700</a> Nut	<a href="#">Buy now</a>

## Bottom Cowling

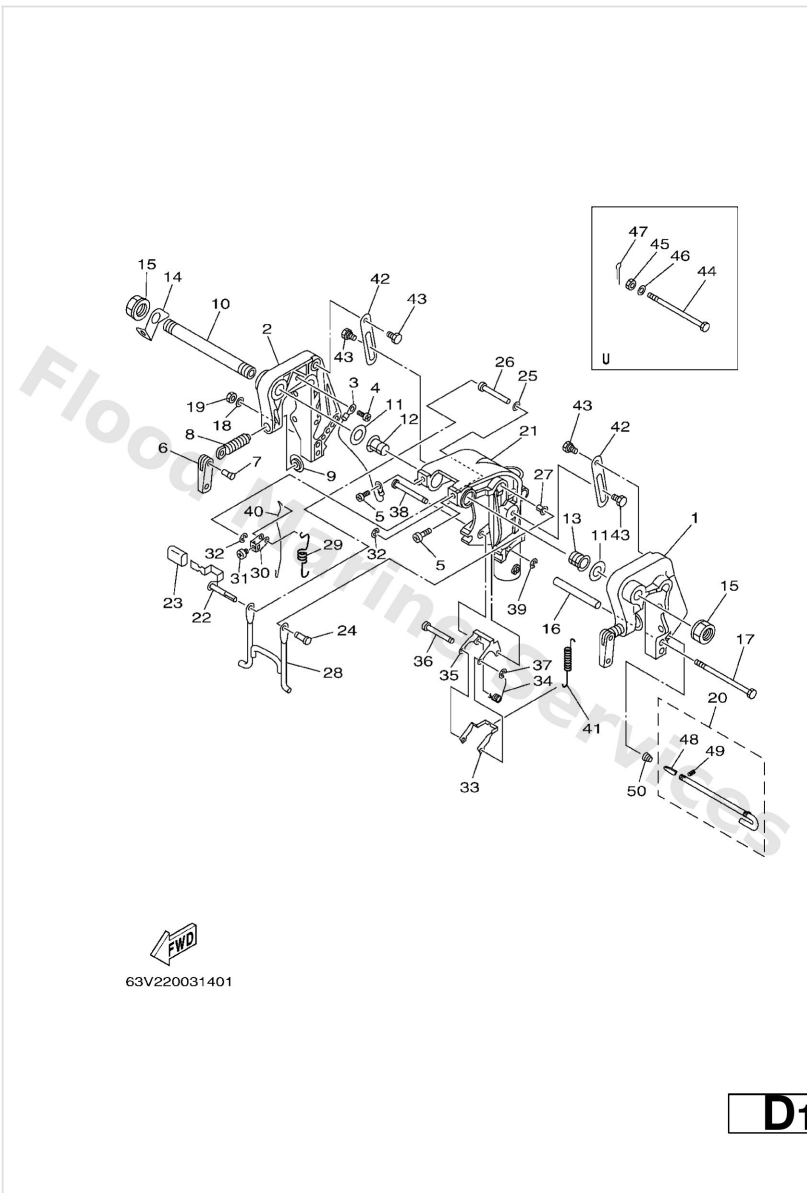


  
63V2200-3100

**C2**

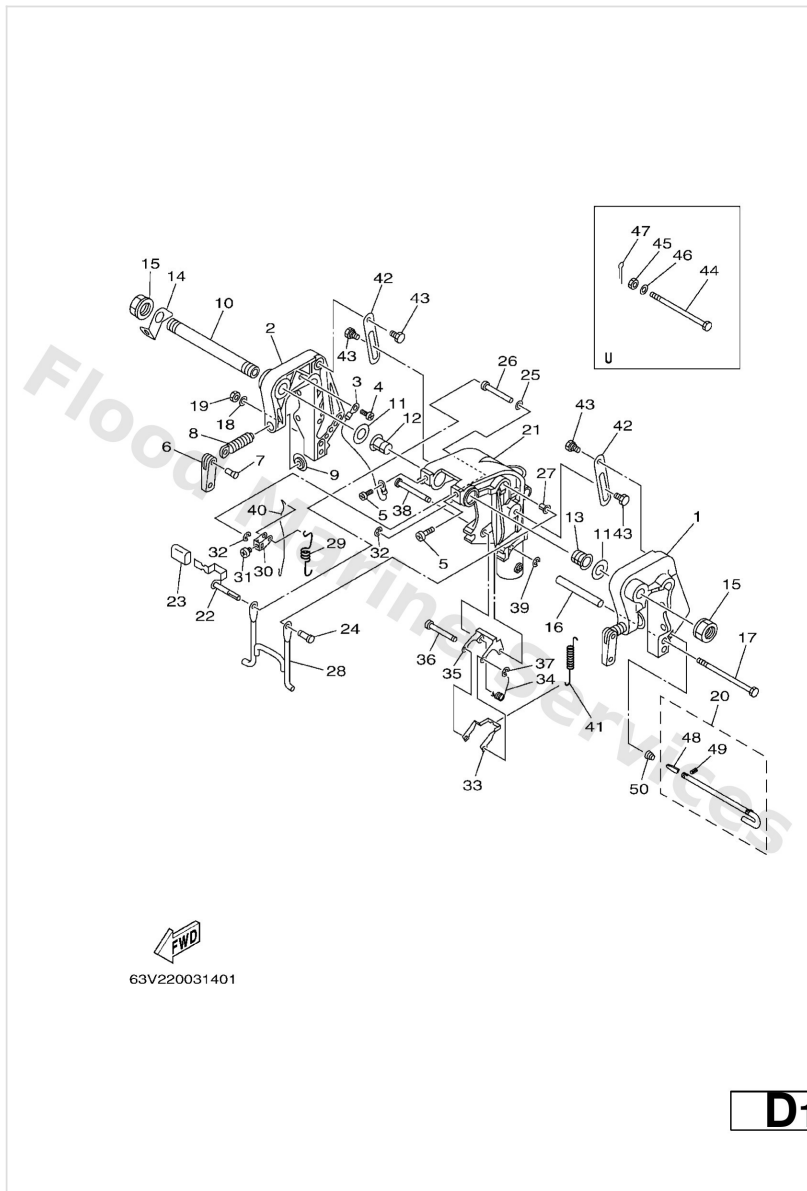
Ref	Part	
16	<a href="#">92995-06600</a> Washer, plain (646)	<a href="#">Buy now</a>
17	<a href="#">90387-06034</a> Collar (6g1)	<a href="#">Buy now</a>
18	<a href="#">90480-15M31</a> Grommet (6g1)	<a href="#">Buy now</a>
19	<a href="#">63V-42716-02</a> Rubber, seal 1	<a href="#">Buy now</a>
20	<a href="#">6H3-44391-01</a> Nipple, hose	<a href="#">Buy now</a>
21	<a href="#">90465-25M57</a> Clamp(63v)	<a href="#">Buy now</a>
22	<a href="#">6E7-42791-00</a> Mark 1	<a href="#">Buy now</a>
22	<a href="#">6E7-42791-10</a> Mark 1 FOR CHINA,CARIB	<a href="#">Buy now</a>
23	<a href="#">6A1-28176-00</a> Label Caution FOR CARIB	<a href="#">Buy now</a>
24	<a href="#">6E3-8257H-00</a> Plate Mark FOR CARIB	<a href="#">Buy now</a>

# Bracket 1



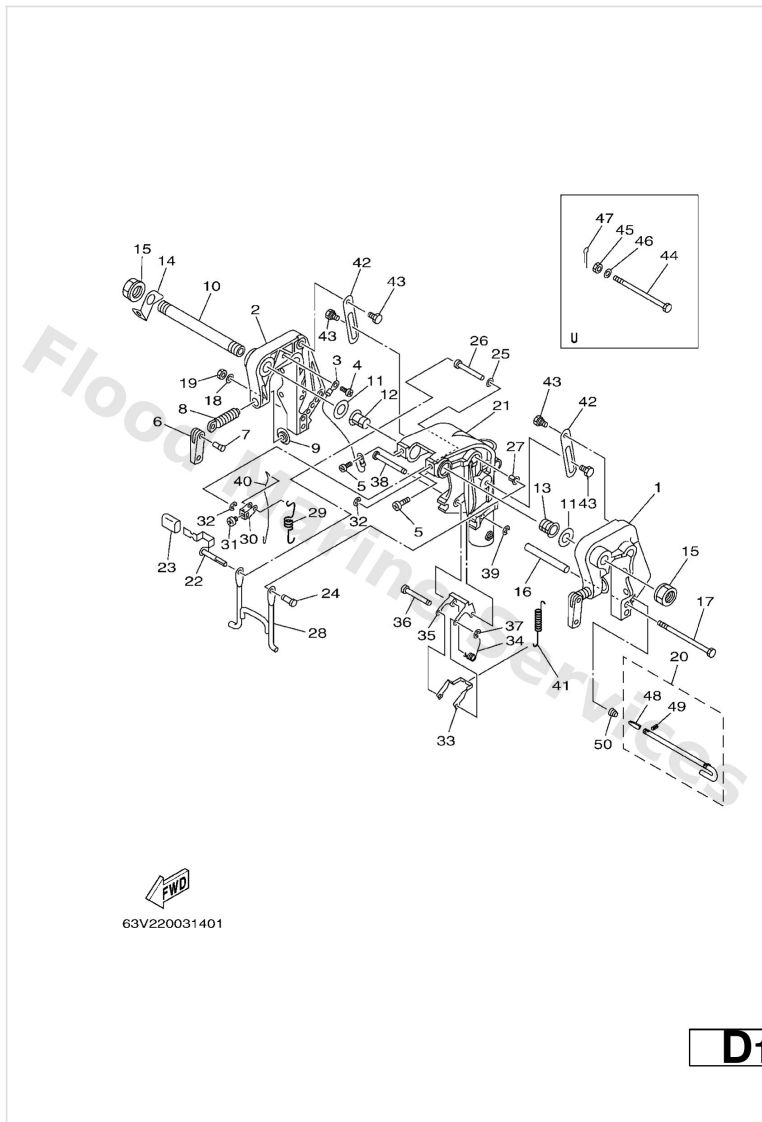
Ref	Part	
1	<a href="#">63V-43111-05-4D</a> Bracket, clamp 1	<a href="#">Buy now</a>
2	<a href="#">63V-43112-06-4D</a> Bracket, clamp 2	<a href="#">Buy now</a>
3	<a href="#">66M-82148-00</a> Wire, lead 4	<a href="#">Buy now</a>
4	<a href="#">97885-06008</a> Screw, pan head(6a3)	<a href="#">Buy now</a>
5	<a href="#">97885-08010</a> Rivet	<a href="#">Buy now</a>
6	<a href="#">6E0-43118-01</a> Handle, transom clamp	<a href="#">Buy now</a>
7	<a href="#">90243-04M01</a> Pin(6a1)	<a href="#">Buy now</a>
8	<a href="#">6E7-43116-00</a> Screw, transom clamp	<a href="#">Buy now</a>
9	<a href="#">648-43114-01</a> Pad, transom clamp	<a href="#">Buy now</a>
10	<a href="#">63W-43131-01</a> Bolt, clamp bracket	<a href="#">Buy now</a>
11	<a href="#">90202-22M54</a> Washer, plate(63v)	<a href="#">Buy now</a>
12	<a href="#">90386-22M94</a> Bush(63v)	<a href="#">Buy now</a>
14	<a href="#">6J8-43113-01</a> Plate, clamp bracket	<a href="#">Buy now</a>
15	<a href="#">90185-22043</a> Nut, self-locking	<a href="#">Buy now</a>
16	<a href="#">90387-06M13</a> Collar(6h6)	<a href="#">Buy now</a>

# Bracket 1



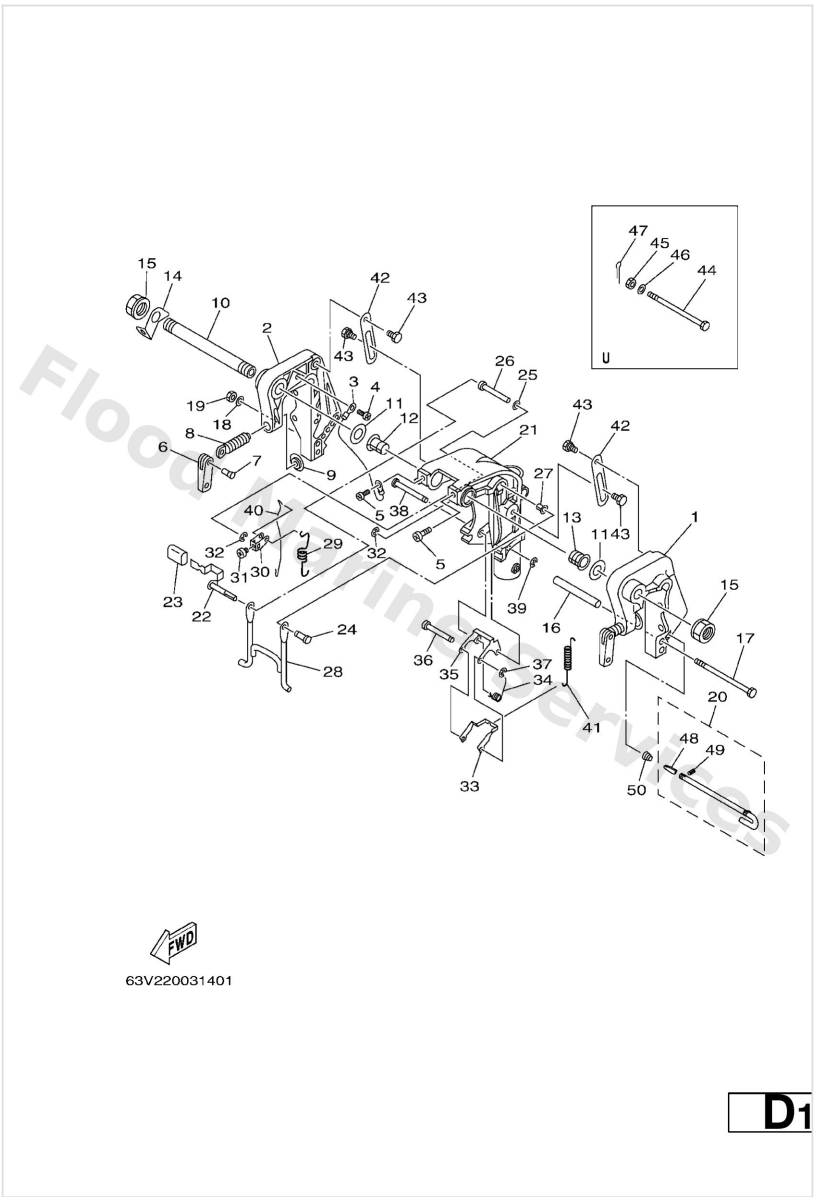
Ref	Part	
17	<a href="#">90101-06M29</a> Bolt, hexagon (682)	<a href="#">Buy now</a>
18	<a href="#">92995-06600</a> Washer, plain (646)	<a href="#">Buy now</a>
19	<a href="#">66M4316001</a> Tilt rod assembly S/L	<a href="#">Buy now</a>
19	<a href="#">95380-06700</a> Nut	<a href="#">Buy now</a>
21	<a href="#">63V-43311-03-4D</a> Bracket, swivel 1	<a href="#">Buy now</a>
22	<a href="#">66M-43630-01</a> Tilt lever assembly	<a href="#">Buy now</a>
23	<a href="#">682-43318-01</a> Cover	<a href="#">Buy now</a>
24	<a href="#">63V-43191-00</a> Shaft, stopper	<a href="#">Buy now</a>
25	<a href="#">90202-07M60</a> Washer, plate	<a href="#">Buy now</a>
26	<a href="#">90387-07M07</a> Collar	<a href="#">Buy now</a>
27	<a href="#">90386-07M95</a> Bush(63v)	<a href="#">Buy now</a>
28	<a href="#">66M-43350-01</a> Receiver assembly	<a href="#">Buy now</a>
29	<a href="#">90507-20M00</a> Spring, tension(63v)	<a href="#">Buy now</a>
30	<a href="#">63V-43641-01</a> Lever, tilt	<a href="#">Buy now</a>
31	<a href="#">90157-05014</a> Screw, pan head	<a href="#">Buy now</a>

# Bracket 1



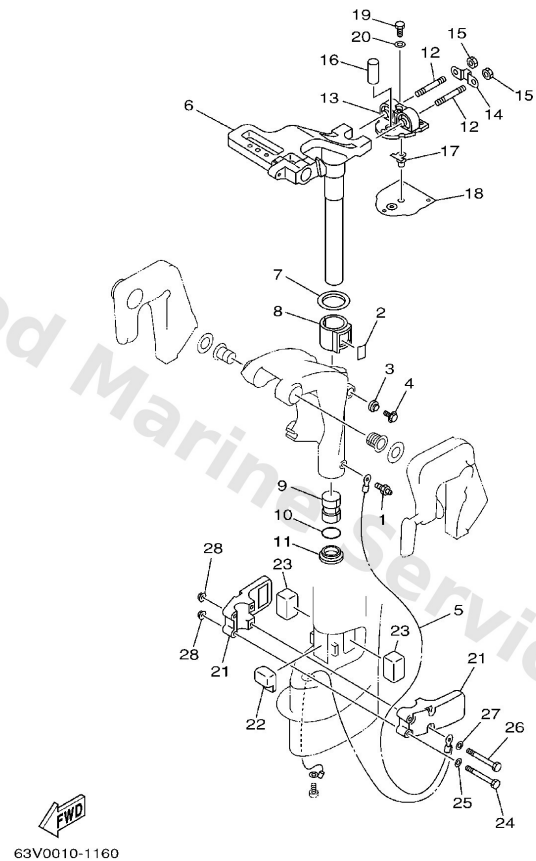
Ref	Part	
32	<a href="#">99080-05600</a> Circlip(22k)	<a href="#">Buy now</a>
33	<a href="#">63V-43614-10</a> Plate, tilt lock	<a href="#">Buy now</a>
34	<a href="#">90508-18M41</a> Spring, torsion	<a href="#">Buy now</a>
35	<a href="#">66R-43615-00</a> Plate, tilt lock	<a href="#">Buy now</a>
36	<a href="#">66R-43611-00</a> Shaft, tilt lock	<a href="#">Buy now</a>
37	<a href="#">93430-04M03</a> Circlip (eu0)	<a href="#">Buy now</a>
38	<a href="#">63V-43659-00</a> Shaft, reverse lock	<a href="#">Buy now</a>
40	<a href="#">66R-43617-00</a> Rod, tilt lock	<a href="#">Buy now</a>
41	<a href="#">63V-43656-00</a> Spring, reverse lock 1	<a href="#">Buy now</a>
42	<a href="#">63V-43181-00</a> Lever, tilt stop 1	<a href="#">Buy now</a>
43	<a href="#">90109-06M84</a> Bolt	<a href="#">Buy now</a>
44	<a href="#">90102-08M03</a> Bolt, With Hole U	<a href="#">Buy now</a>
45	<a href="#">90171-08M00</a> Nut, castle (682) U	<a href="#">Buy now</a>
46	<a href="#">92995-08600</a> Washer, plain (663) U	<a href="#">Buy now</a>
47	<a href="#">91490-20015</a> Pin, cotter (648) U	<a href="#">Buy now</a>

# Bracket 1



Ref	Part	
48	<a href="#">6894316500</a> Plate, tilt lock	<a href="#">Buy now</a>
49	<a href="#">9169030008</a> Pin. spring(656)	<a href="#">Buy now</a>
50	<a href="#">9050210M07</a> Spring, conical(6k3)	<a href="#">Buy now</a>

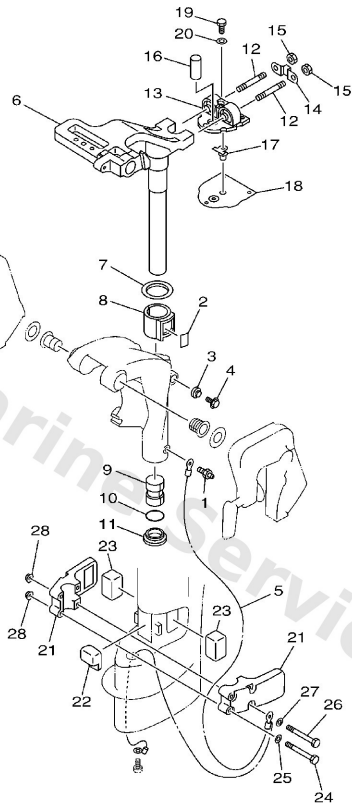
## Bracket 2



**D3**

Ref	Part	
1	<a href="#">93700-06M03</a> Nipple, grease(6a1)	<a href="#">Buy now</a>
2	<a href="#">63V-42528-00</a> Plate, friction	<a href="#">Buy now</a>
3	<a href="#">689-43373-01</a> Seal, damper	<a href="#">Buy now</a>
4	<a href="#">90105-06M07</a> Bolt (689)	<a href="#">Buy now</a>
5	<a href="#">63V-82127-00</a> Wire, lead 2	<a href="#">Buy now</a>
6	<a href="#">63V-42511-04-4D</a> Bracket, steering	<a href="#">Buy now</a>
7	<a href="#">90209-40008</a> Washer	<a href="#">Buy now</a>
8	<a href="#">65F-42537-00</a> Bushing, pivot shaft	<a href="#">Buy now</a>
9	<a href="#">90386-30048</a> Bush	<a href="#">Buy now</a>
10	<a href="#">93210-29M94</a> O-ring(6h1)	<a href="#">Buy now</a>
11	<a href="#">90386-30M60</a> Bush(6j8)	<a href="#">Buy now</a>
12	<a href="#">90116-08M54</a> Bolt, stud(63v)	<a href="#">Buy now</a>
13	<a href="#">63V-44514-01-5B</a> Mount damper, upper side S/L	<a href="#">Buy now</a>
13	<a href="#">63V-44514-31-5B</a> Mount Damper, Upper Side U	<a href="#">Buy now</a>
14	<a href="#">63V-44526-00</a> Plate	<a href="#">Buy now</a>

## Bracket 2

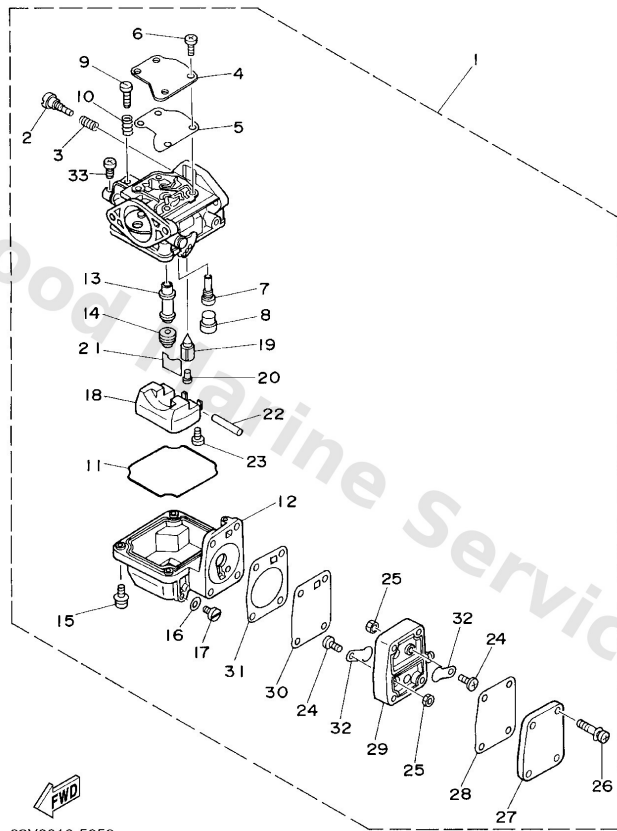


63V0010-1160

**D3**

Ref	Part	
15	<a href="#">95380-08600</a> Nut (661)	<a href="#">Buy now</a>
16	<a href="#">90387-16002</a> Collar	<a href="#">Buy now</a>
17	<a href="#">63V-44366-01</a> Damper, water seal 2	<a href="#">Buy now</a>
18	<a href="#">63V-45114-A0</a> Gasket, upper casing	<a href="#">Buy now</a>
19	<a href="#">97095-06018</a> Bolt (fj0)	<a href="#">Buy now</a>
20	<a href="#">92995-06600</a> Washer, plain (646)	<a href="#">Buy now</a>
21	<a href="#">63V-44551-01-4D</a> Housing, lower mount rubber 1	<a href="#">Buy now</a>
22	<a href="#">63V-44557-00</a> Mount damper, lower front	<a href="#">Buy now</a>
23	<a href="#">682-44555-00</a> Mount damper, lower side S/L	<a href="#">Buy now</a>
23	<a href="#">682-44555-30</a> Mount damper, lower side U	<a href="#">Buy now</a>
24	<a href="#">97075-06055</a> Bolt, hexagon w/w deep recess	<a href="#">Buy now</a>
26	<a href="#">97075-06075</a> Bolt, hexagon w/w deep recess	<a href="#">Buy now</a>
28	<a href="#">90179-06M28</a> Nut(63v)	<a href="#">Buy now</a>

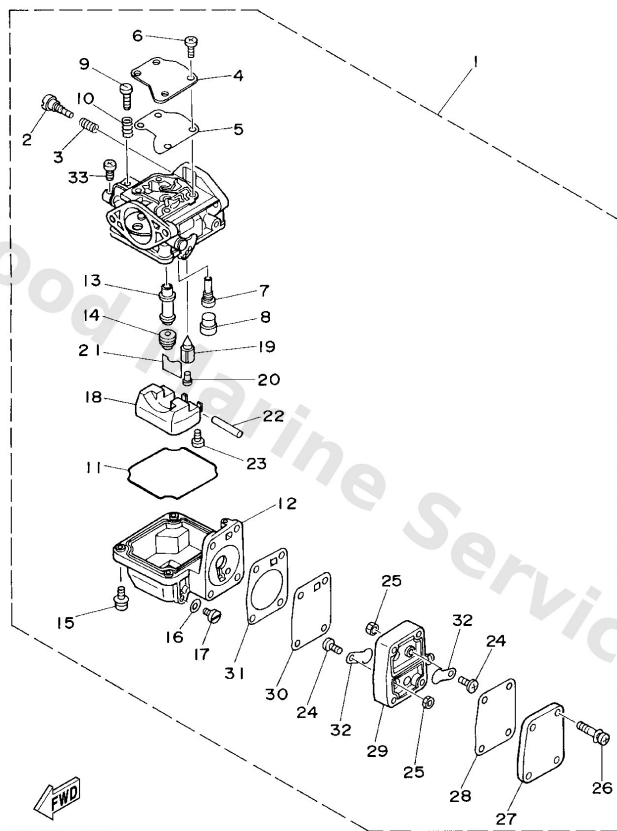
# Carburetor



**B2**

Ref	Part	
1	<a href="#">63V-14301-00</a> Carburetor assembly 1	<a href="#">Buy now</a>
1	<a href="#">65D-14301-01</a> Carburetor assembly 1 FOR BRAZIL	<a href="#">Buy now</a>
2	<a href="#">679-14923-00</a> Screw, pilot	<a href="#">Buy now</a>
3	<a href="#">679-14555-00</a> Spring	<a href="#">Buy now</a>
4	<a href="#">63V-14527-00</a> Plate	<a href="#">Buy now</a>
5	<a href="#">63V-14126-00</a> Gasket	<a href="#">Buy now</a>
6	<a href="#">97803-04010</a> Screw, pan head (e56)	<a href="#">Buy now</a>
7	<a href="#">63V-14948-06</a> Jet (#48)	<a href="#">Buy now</a>
7	<a href="#">63V-14948-08</a> Jet (#52) FOR 65D-14301-01	<a href="#">Buy now</a>
8	<a href="#">679-14966-00</a> Rubber cap	<a href="#">Buy now</a>
9	<a href="#">63V-14523-00</a> Screw, stop	<a href="#">Buy now</a>
10	<a href="#">90501-10326</a> Spring coil(663)(carb)	<a href="#">Buy now</a>
11	<a href="#">63V-14984-00</a> Gasket, float chamber	<a href="#">Buy now</a>
12	<a href="#">63V-14980-00</a> Body, float chamber	<a href="#">Buy now</a>
13	<a href="#">63V-14947-00</a> Jet, needle	<a href="#">Buy now</a>

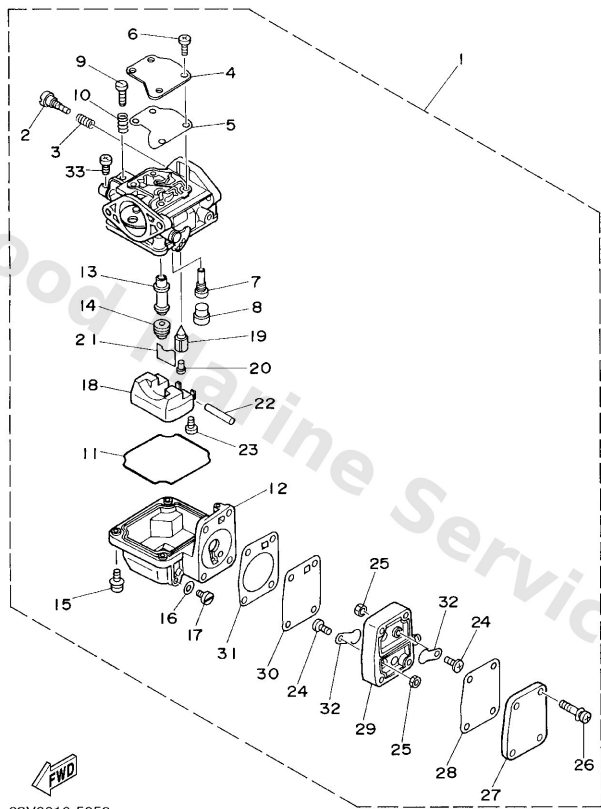
# Carburetor



**B2**

Ref	Part	
14	<a href="#">676-14943-29</a> Jet, main (#110)	<a href="#">Buy now</a>
14	<a href="#">676-14943-81</a> Jet, main (#118) <b>FOR 65D-14301-01</b>	<a href="#">Buy now</a>
15	<a href="#">97980-04114</a> Screw, pan head(ga5)	<a href="#">Buy now</a>
16	<a href="#">6G1-14398-00</a> Washer	<a href="#">Buy now</a>
17	<a href="#">6G1-14992-00</a> Screw, drain	<a href="#">Buy now</a>
18	<a href="#">63V-14985-00</a> Float	<a href="#">Buy now</a>
19	<a href="#">62D-14546-01</a> Valve, needle <b>FOR 65D-14301-01</b>	<a href="#">Buy now</a>
19	<a href="#">6G1-14546-01</a> Valve, needle	<a href="#">Buy now</a>
20	<a href="#">676-14186-00</a> Pin, valve	<a href="#">Buy now</a>
21	<a href="#">663-14159-00</a> Clip	<a href="#">Buy now</a>
22	<a href="#">6H4-14548-00</a> Pin, float arm	<a href="#">Buy now</a>
23	<a href="#">98580-04008</a> Screw, pan head (713)	<a href="#">Buy now</a>
24	<a href="#">98980-03006</a> Screw, bind(6g1)	<a href="#">Buy now</a>
25	<a href="#">95380-03600</a> Nut (6g8)	<a href="#">Buy now</a>
26	<a href="#">97980-04125</a> Screw, with washer	<a href="#">Buy now</a>

# Carburetor

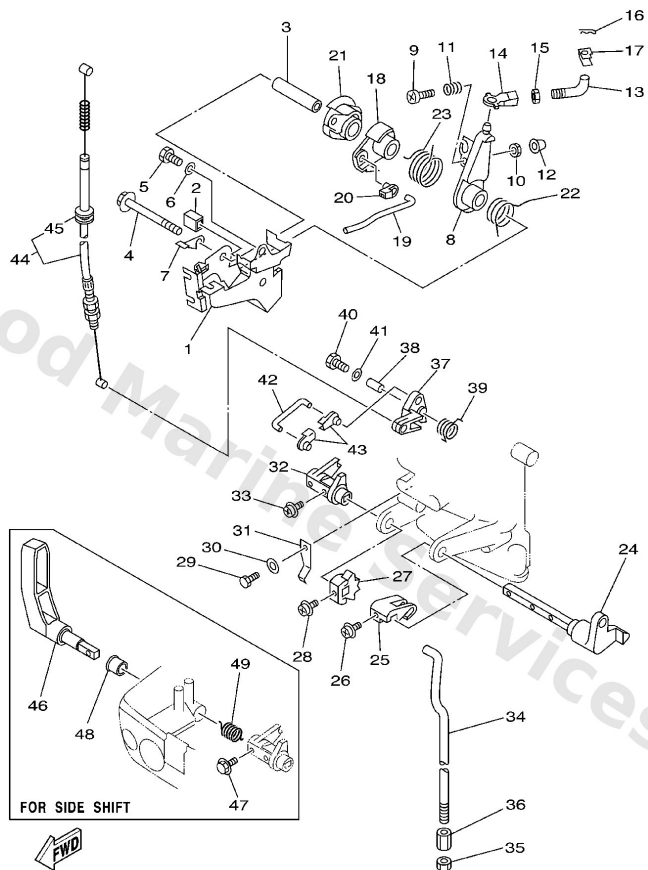


63V0010-5050

**B2**

Ref	Part	
27	<a href="#">6G1-24452-00</a> Cover, pump	<a href="#">Buy now</a>
28	<a href="#">63V-24411-00</a> Diaphragm	<a href="#">Buy now</a>
29	<a href="#">6G1-24412-01</a> Body 1	<a href="#">Buy now</a>
30	<a href="#">6G1-24411-00</a> Diaphragm	<a href="#">Buy now</a>
31	<a href="#">6G1-24431-01</a> Gasket, fuel pump 1	<a href="#">Buy now</a>
32	<a href="#">6L5-24421-00</a> Valve, check	<a href="#">Buy now</a>
33	<a href="#">98580-04006</a> Screw, pan head (7h3)	<a href="#">Buy now</a>

# Control

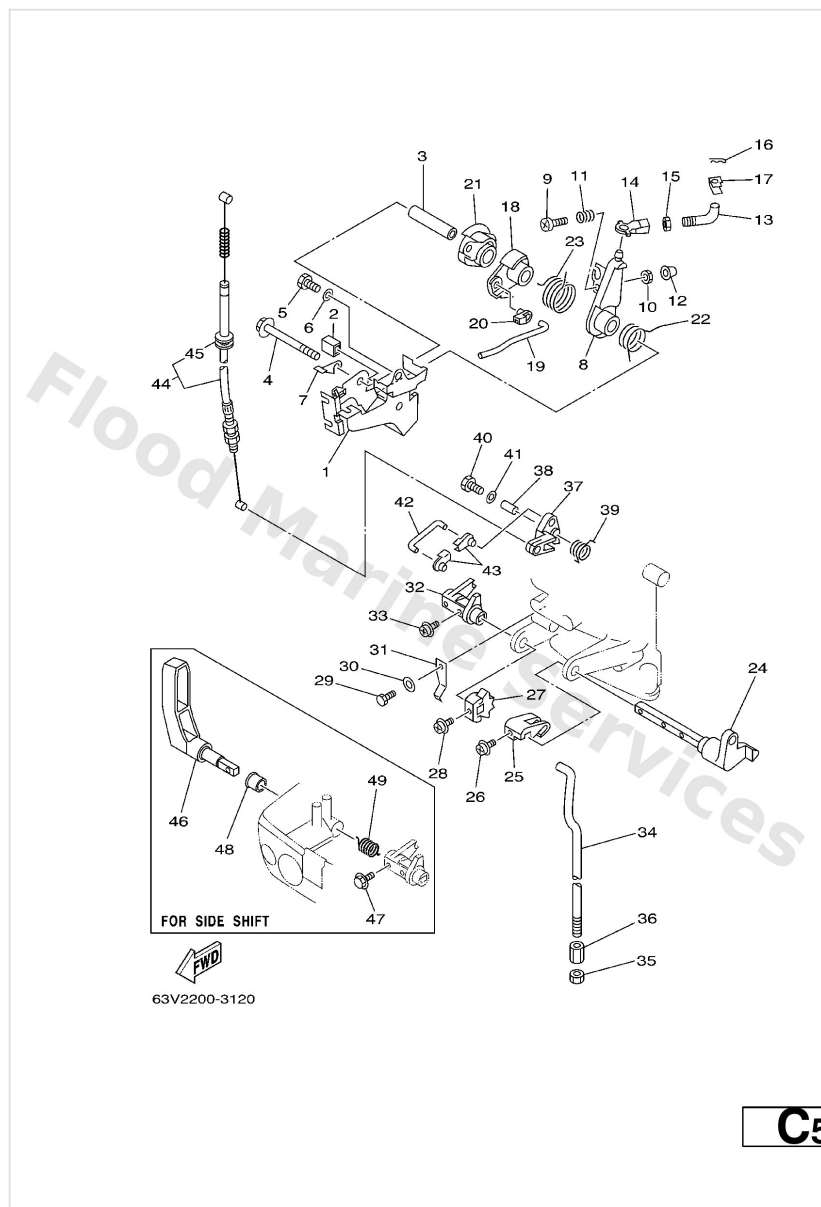


63V2200-3120

C5

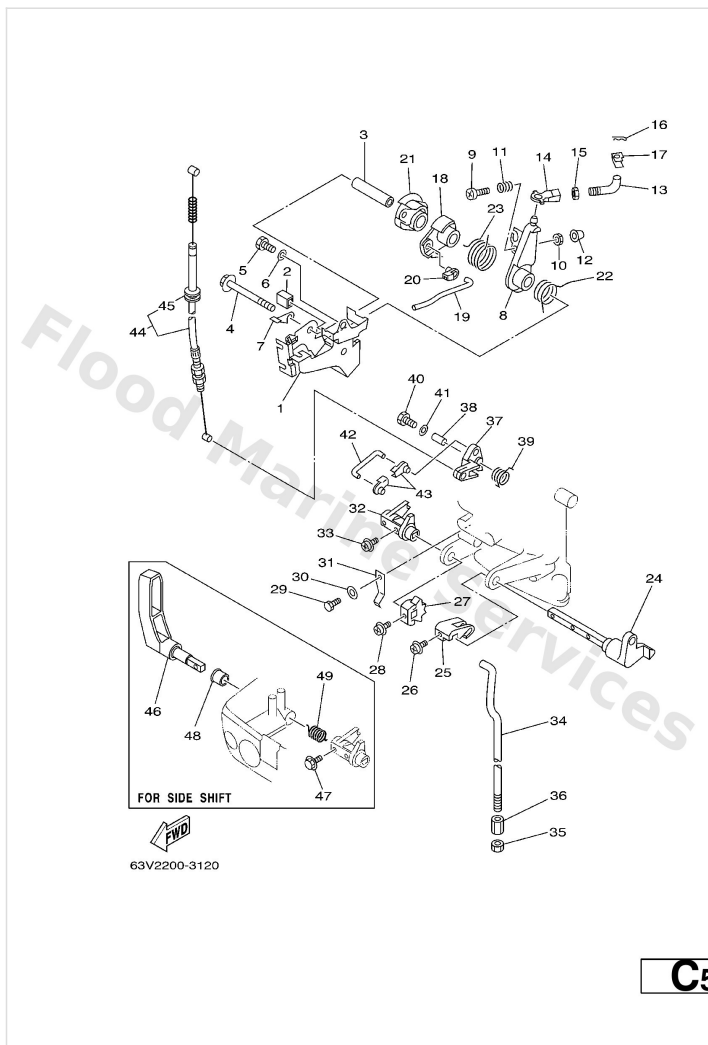
Ref	Part	
1	<a href="#">63V-14497-02</a> Stay, throttle wire	<a href="#">Buy now</a>
2	<a href="#">689-44194-00</a> Cap	<a href="#">Buy now</a>
3	<a href="#">90387-06M50</a> Collar(63v)	<a href="#">Buy now</a>
4	<a href="#">95895-06065</a> Bolt, flange(63v)	<a href="#">Buy now</a>
5	<a href="#">97095-06012</a> Bolt(gh1)	<a href="#">Buy now</a>
41	<a href="#">92995-06600</a> Washer, plain (646) <b>FOR SAFETY DEVICE</b>	<a href="#">Buy now</a>
7	<a href="#">63V-41282-00</a> Stopper, free accel. link <b>9.9F-FOR CARIB</b>	<a href="#">Buy now</a>
8	<a href="#">63V-41631-00</a> Lever, magneto control	<a href="#">Buy now</a>
9	<a href="#">97885-06030</a> Screw, pan head(6e0)	<a href="#">Buy now</a>
10	<a href="#">95380-06600</a> Nut(661)	<a href="#">Buy now</a>
11	<a href="#">90501-12M16</a> Spring (6a1)	<a href="#">Buy now</a>
12	<a href="#">688-44194-00</a> Cap	<a href="#">Buy now</a>
13	<a href="#">63V-41238-00</a> Joint, link	<a href="#">Buy now</a>
14	<a href="#">6H4-41237-00</a> Joint, link	<a href="#">Buy now</a>
15	<a href="#">95380-05700</a> Nut (656)	<a href="#">Buy now</a>

# Control



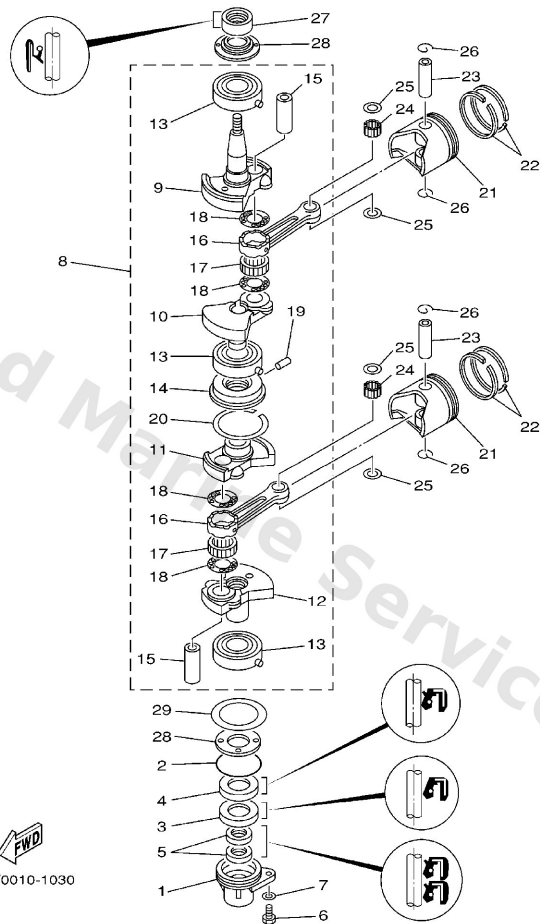
Ref	Part	
16	<a href="#">90468-10005</a> Pin, hair 6264123500	<a href="#">Buy now</a>
17	<a href="#">63V-41223-00</a> Washer, lock 1	<a href="#">Buy now</a>
18	<a href="#">63V-41283-01</a> Lever, free accel.	<a href="#">Buy now</a>
19	<a href="#">63V-41211-00</a> Link, accel.	<a href="#">Buy now</a>
43	<a href="#">661-41262-02</a> Joint, choke lever <b>FOR SAFETY DEVICE</b>	<a href="#">Buy now</a>
21	<a href="#">63V-41638-00</a> Pulley	<a href="#">Buy now</a>
22	<a href="#">90508-16M37</a> Spring, torsion(63v)	<a href="#">Buy now</a>
23	<a href="#">90508-20M38</a> Spring, torsion(63v)	<a href="#">Buy now</a>
24	<a href="#">63V-44123-01</a> Arm, shift rod	<a href="#">Buy now</a>
25	<a href="#">63V-44121-01</a> Lever, shift rod	<a href="#">Buy now</a>
26	<a href="#">90159-05M25</a> Screw,pan head (646)	<a href="#">Buy now</a>
27	<a href="#">63V-44125-00</a> Lever, shift rod	<a href="#">Buy now</a>
31	<a href="#">63V-44116-00</a> Spring	<a href="#">Buy now</a>
32	<a href="#">63V-44122-01</a> Bushing, shift rod lever <b>FOR FRONT SHIFT</b>	<a href="#">Buy now</a>
32	<a href="#">65F-44122-00</a> Bushing, Shift Rod Lever <b>FOR SIDE SHIFT</b>	<a href="#">Buy now</a>

# Control



Ref	Part	
34	<a href="#">63V-44143-01</a> Rod, shift	<a href="#">Buy now</a>
35	<a href="#">95380-06700</a> Nut	<a href="#">Buy now</a>
36	<a href="#">90170-06015</a> Connector, shift rod	<a href="#">Buy now</a>
37	<a href="#">63V-15746-00</a> Arm FOR SAFETY DEVICE-	<a href="#">Buy now</a>
37	<a href="#">63V-15746-10</a> Arm FOR SAFETY DEVICE	<a href="#">Buy now</a>
38	<a href="#">90387-06M06</a> Collar (651) FOR SAFETY DEVICE	<a href="#">Buy now</a>
39	<a href="#">90508-08M39</a> Spring, torsion(63v) FOR SAFETY DEVICE	<a href="#">Buy now</a>
40	<a href="#">97095-06020</a> Bolt(7u8) FOR SAFETY DEVICE	<a href="#">Buy now</a>
42	<a href="#">6L2-15747-00</a> Link FOR SAFETY DEVICE	<a href="#">Buy now</a>
44	<a href="#">63V-15770-00</a> Cable comp., starter stop FOR SAFETY DEVICE	<a href="#">Buy now</a>
45	<a href="#">90480-10M16</a> Grommet(6j8)	<a href="#">Buy now</a>
46	<a href="#">65F-44111-00</a> Handle, Gear Shift FOR SIDE SHIFT	<a href="#">Buy now</a>
47	<a href="#">90119-05003</a> Bolt, With Washer FOR SIDE SHIFT	<a href="#">Buy now</a>
48	<a href="#">90386-10009</a> Bushing 6484418600 FOR SIDE SHIFT	<a href="#">Buy now</a>
49	<a href="#">90501-12M85</a> Spring, Compression FOR SIDE SHIFT	<a href="#">Buy now</a>

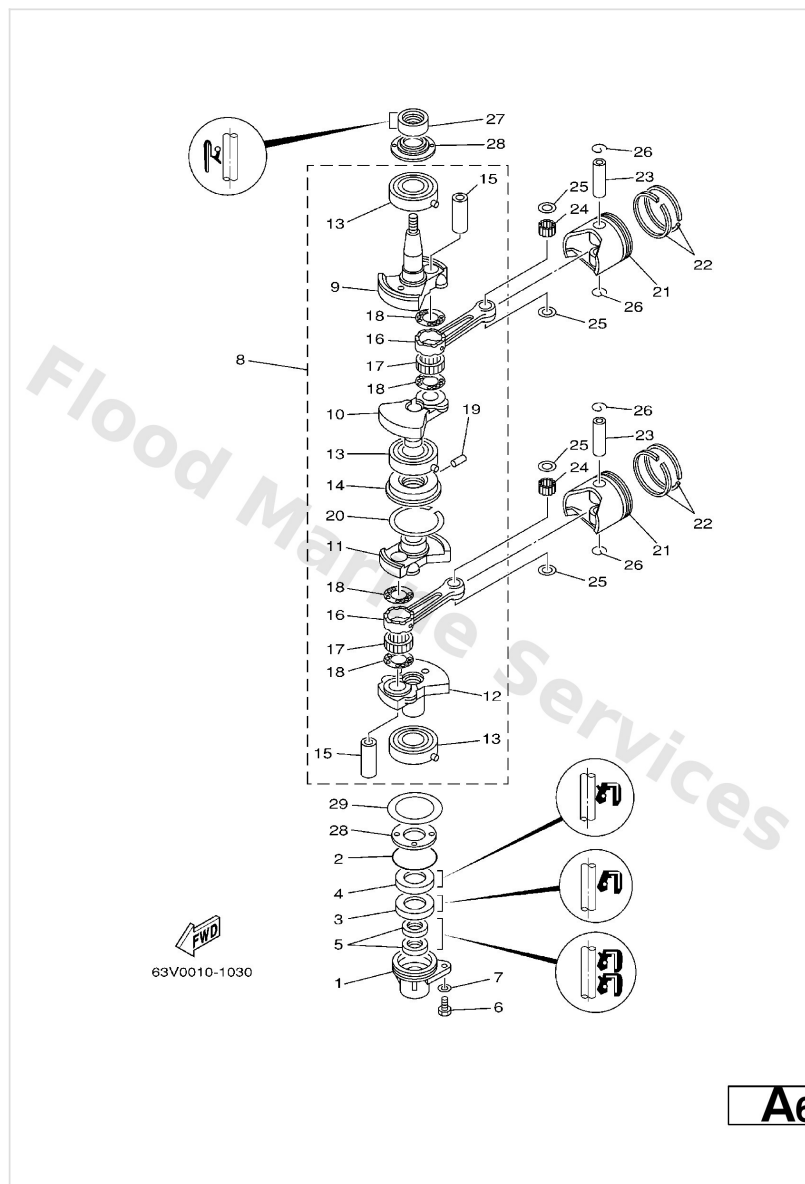
# Crankshaft. Piston



A6

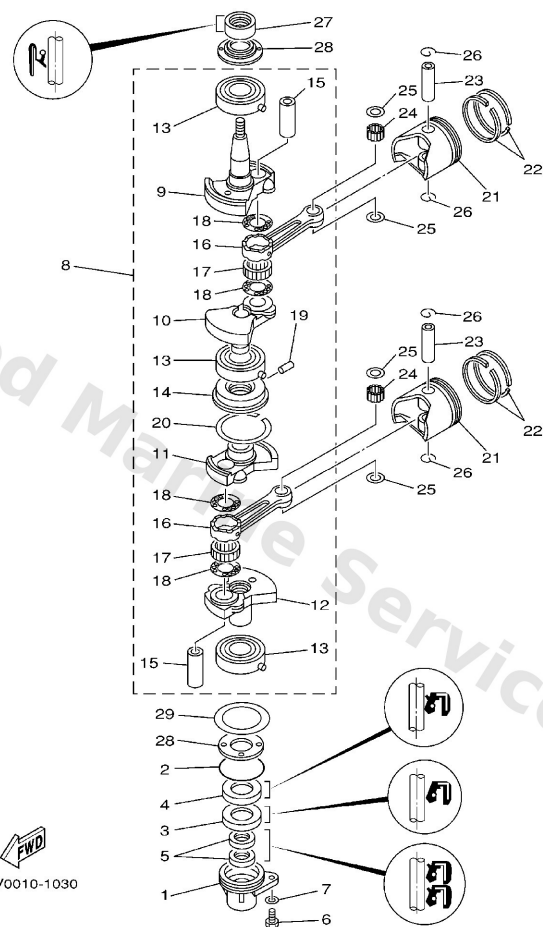
Ref	Part	
1	<a href="#">63V-15396-01-94</a> Housing, oil seal	<a href="#">Buy now</a>
2	<a href="#">93210-46M16</a> O-ring (688)	<a href="#">Buy now</a>
3	<a href="#">93101-25018</a> Oil seal	<a href="#">Buy now</a>
4	<a href="#">93102-25M48</a> Oil seal(63v)	<a href="#">Buy now</a>
5	<a href="#">93101-13018</a> Oil seal	<a href="#">Buy now</a>
6	<a href="#">97095-06016</a> Bolt, hexagon deep recess	<a href="#">Buy now</a>
7	<a href="#">92995-06600</a> Washer, plain (646)	<a href="#">Buy now</a>
8	<a href="#">63V-11400-01</a> Crankshaft assembly	<a href="#">Buy now</a>
9	<a href="#">63V-11412-00</a> Crank 1	<a href="#">Buy now</a>
10	<a href="#">63V-11422-00</a> Crank 2	<a href="#">Buy now</a>
11	<a href="#">63V-11432-00</a> Crank 3	<a href="#">Buy now</a>
12	<a href="#">63V-11442-00</a> Crank 4	<a href="#">Buy now</a>
13	<a href="#">93306-205U7</a> Bearing(63v)	<a href="#">Buy now</a>
14	<a href="#">63V-11515-02</a> Seal, labyrinth 1	<a href="#">Buy now</a>
15	<a href="#">682-11681-00</a> Pin crank	<a href="#">Buy now</a>

# Crankshaft. Piston



Ref	Part	
16	<a href="#">650-11651-04</a> Rod, connecting	<a href="#">Buy now</a>
17	<a href="#">93310-620V5</a> Bearing, big end (682)	<a href="#">Buy now</a>
18	<a href="#">90209-20M23</a> Washer, crank pin (1h9)	<a href="#">Buy now</a>
19	<a href="#">91609-20008</a> Pin, spring	<a href="#">Buy now</a>
20	<a href="#">93440-52009</a> Circlip (168)	<a href="#">Buy now</a>
21	<a href="#">6E7-11631-00-97</a> Piston (std)	<a href="#">Buy now</a>
21	<a href="#">6E7-11635-00</a> Piston (1st o.s) AP	<a href="#">Buy now</a>
21	<a href="#">6E7-11636-00</a> Piston (2nd o.s) AP	<a href="#">Buy now</a>
22	<a href="#">682-11610-01</a> Piston ring set (std)	<a href="#">Buy now</a>
22	<a href="#">682-11610-11</a> Piston ring set (1st o/s) AP	<a href="#">Buy now</a>
22	<a href="#">682-11610-21</a> Piston ring set (2nd o/s) AP	<a href="#">Buy now</a>
23	<a href="#">634-11633-00</a> Pin, piston	<a href="#">Buy now</a>
24	<a href="#">93602-14104</a> Pin, dowel	<a href="#">Buy now</a>
25	<a href="#">90201-14377</a> Washer, plate	<a href="#">Buy now</a>
26	<a href="#">93450-15023</a> Circlip 131116340000	<a href="#">Buy now</a>

# Crankshaft. Piston

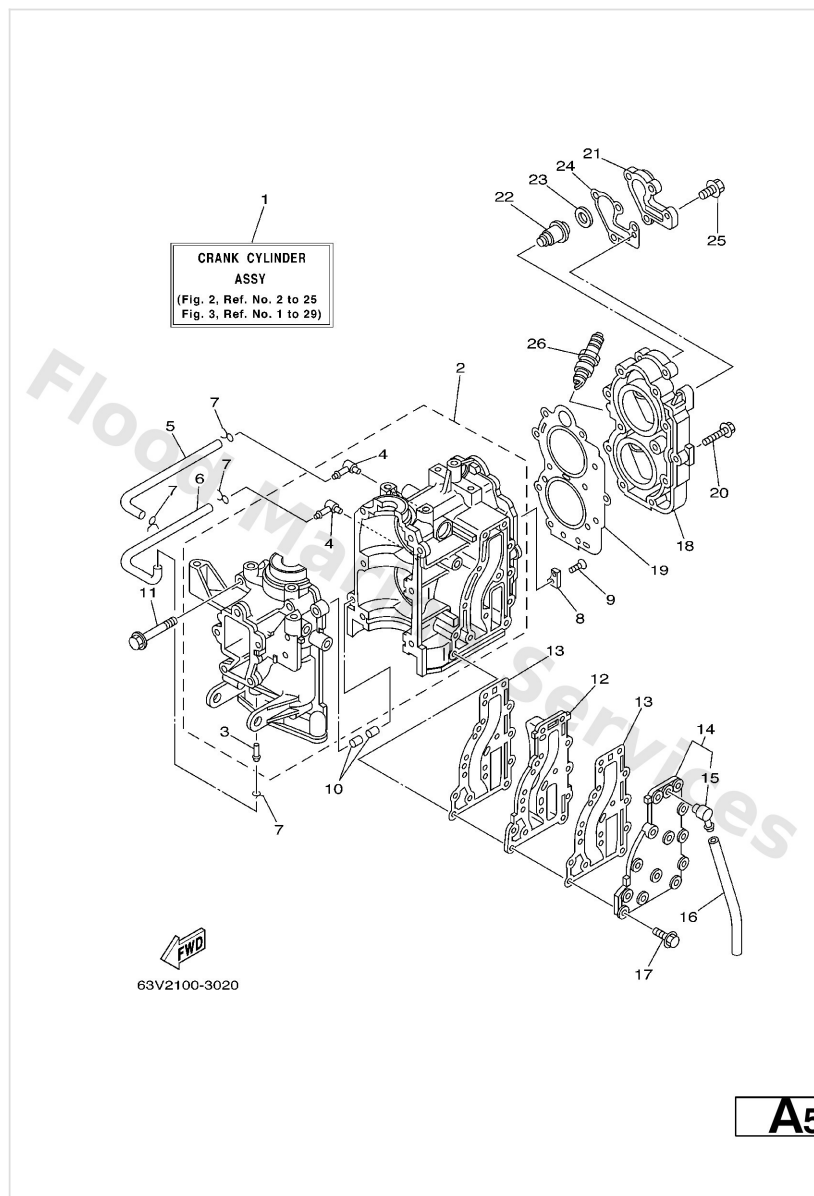


63V0010-1030

A6

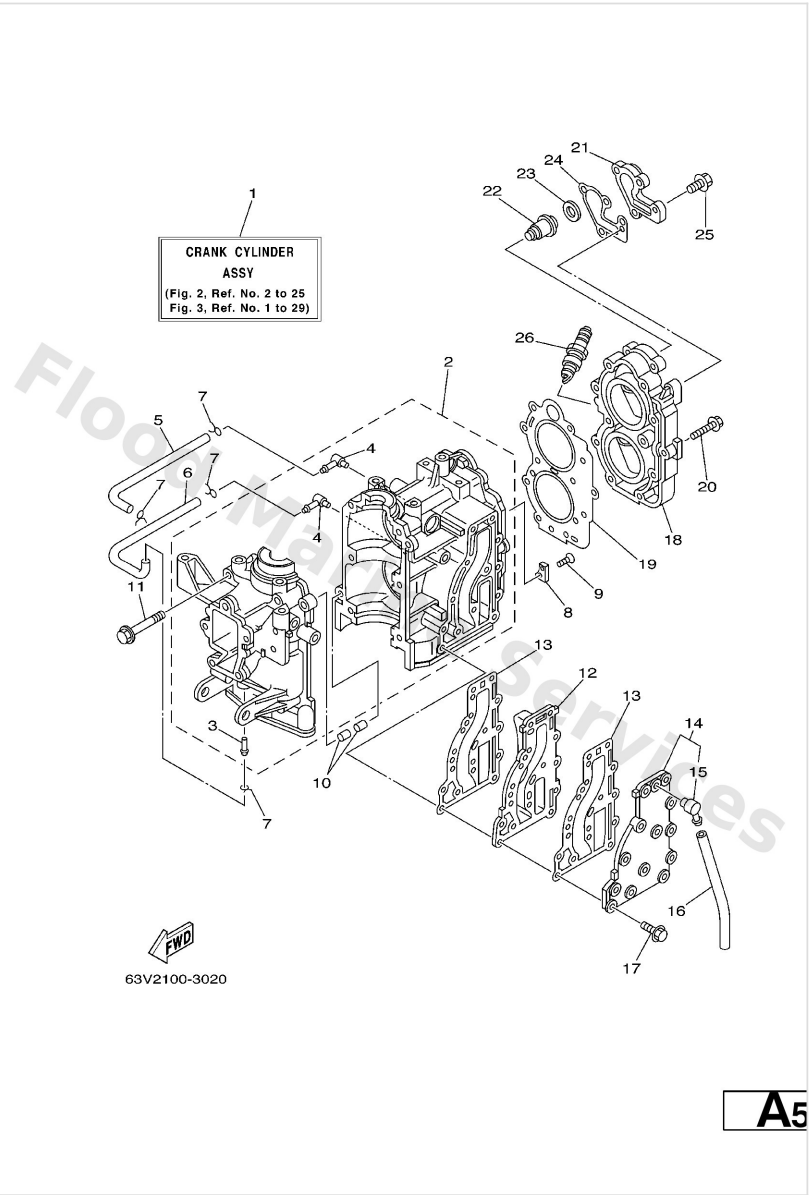
Ref	Part	
27	<a href="#">93110-23M00</a> Oil seal (682)	<a href="#">Buy now</a>
28	<a href="#">63V-11445-00</a> Spacer	<a href="#">Buy now</a>
29	<a href="#">90201-46M29</a> Washer, plate(63v)	<a href="#">Buy now</a>

# Cylinder. Crankcase



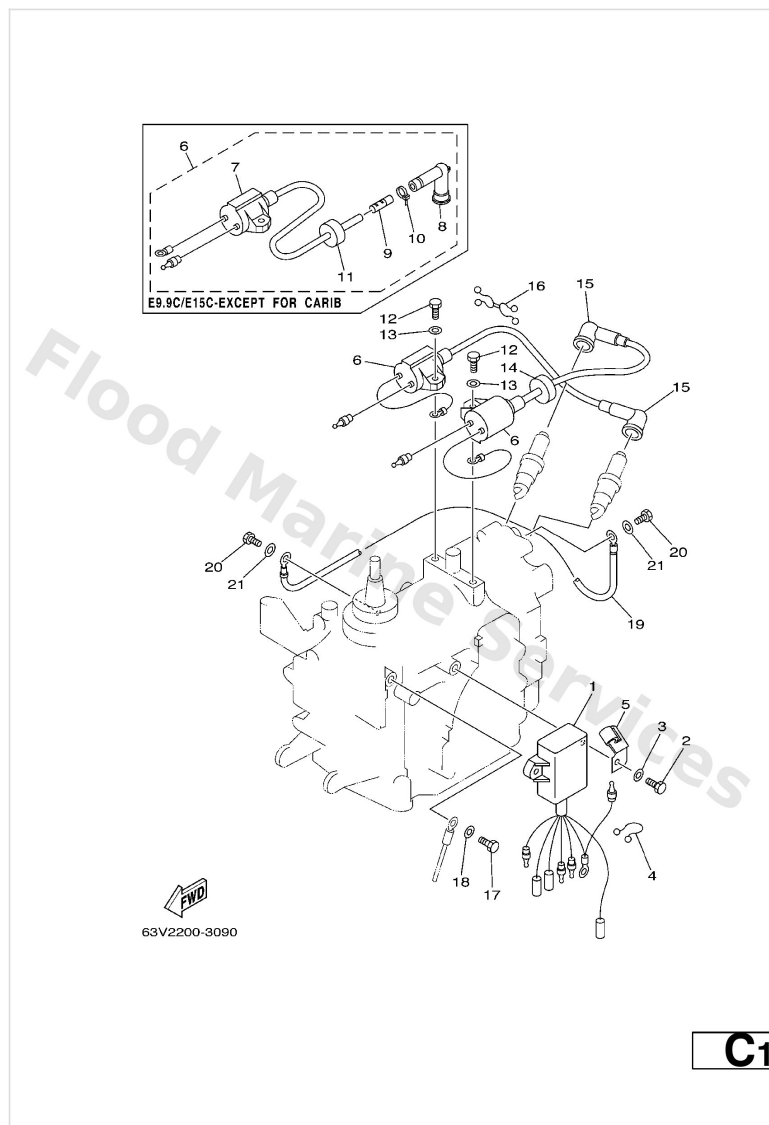
Ref	Part	
3	<a href="#">624-14485-00</a> Pipe, joint	<a href="#">Buy now</a>
4	<a href="#">650-14485-03</a> Pipe, joint	<a href="#">Buy now</a>
5	<a href="#">90445-07M08</a> Hose (I390)	<a href="#">Buy now</a>
7	<a href="#">90467-06016</a> Clip (655)	<a href="#">Buy now</a>
8	<a href="#">682-11325-00</a> Anode 1	<a href="#">Buy now</a>
9	<a href="#">98780-05015</a> Ybs53-516 screw,flat head	<a href="#">Buy now</a>
10	<a href="#">93606-12019</a> Pin, dowel (614)	<a href="#">Buy now</a>
11	<a href="#">90119-08M07</a> Bolt, with washer(63v)	<a href="#">Buy now</a>
13	<a href="#">63V-41112-A0</a> Gasket, exhaust inner cover	<a href="#">Buy now</a>
15	<a href="#">676-11372-00</a> Nipple, hose	<a href="#">Buy now</a>
16	<a href="#">90445-09105</a> Hose (I420)	<a href="#">Buy now</a>
17	<a href="#">90119-06MA4</a> Bolt, with washer	<a href="#">Buy now</a>
19	<a href="#">63V-11181-A1</a> Gasket, cylinder head 1	<a href="#">Buy now</a>
20	<a href="#">90105-07002</a> Bolt, flange	<a href="#">Buy now</a>
22	<a href="#">6E5-12411-30</a> Thermostat	<a href="#">Buy now</a>

# Cylinder. Crankcase



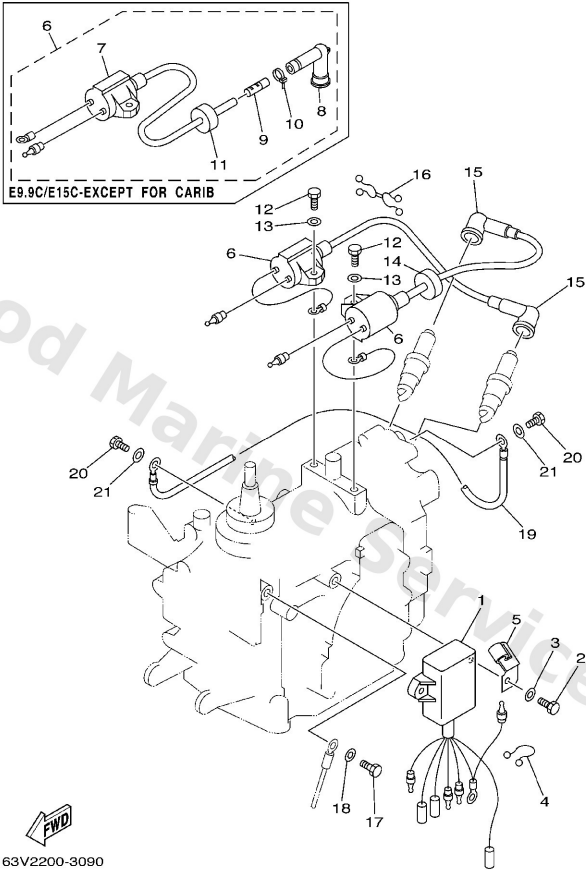
Ref	Part	
23	<a href="#">90201-16M03</a> Washer, plate(63v)	<a href="#">Buy now</a>
24	<a href="#">682-12414-A1</a> Gasket, cover	<a href="#">Buy now</a>
25	<a href="#">90119-06MA2</a> Bolt, with washer	<a href="#">Buy now</a>
26	<a href="#">94702-00217</a> Plug, spark (b7hs-10)	<a href="#">Buy now</a>
26	<a href="#">94702-00271</a> Plug, spark (br7hs-10) FOR CHINA,CARIB	<a href="#">Buy now</a>

# Electrical



Ref	Part	
1	<a href="#">63V-85540-01</a> C.d.i. unit assembly	<a href="#">Buy now</a>
2	<a href="#">97095-06020</a> Bolt(7u8)	<a href="#">Buy now</a>
3	<a href="#">92995-06600</a> Washer, plain (646)	<a href="#">Buy now</a>
4	<a href="#">90464-15M11</a> Clamp (3y2)	<a href="#">Buy now</a>
5	<a href="#">90465-08M61</a> Clamp(63v)	<a href="#">Buy now</a>
6	<a href="#">63V-85570-00</a> Ignition coil assembly <b>E9.9C/E15C-CARIB</b>	<a href="#">Buy now</a>
6	<a href="#">65E-85530-00</a> Ignition Coil assembly <b>EXCEPT CARIB</b>	<a href="#">Buy now</a>
7	<a href="#">65E-85570-00</a> Ignition coil assembly	<a href="#">Buy now</a>
8	<a href="#">62E-82371-11</a> Cap, plug	<a href="#">Buy now</a>
9	<a href="#">62E-8231X-00</a> Terminal 1	<a href="#">Buy now</a>
10	<a href="#">90465-11M10</a> Clamp	<a href="#">Buy now</a>
14	<a href="#">90480-25161</a> Grommet(656) <b>E9.9C/E15C-CARIB</b>	<a href="#">Buy now</a>
12	<a href="#">97095-06018</a> Bolt (fj0)	<a href="#">Buy now</a>
15	<a href="#">663-82370-01</a> Plug cap assembly	<a href="#">Buy now</a>
15	<a href="#">6E3-82370-21</a> Plug cap assembly <b>E9.9C/E15C-CARIB</b>	<a href="#">Buy now</a>

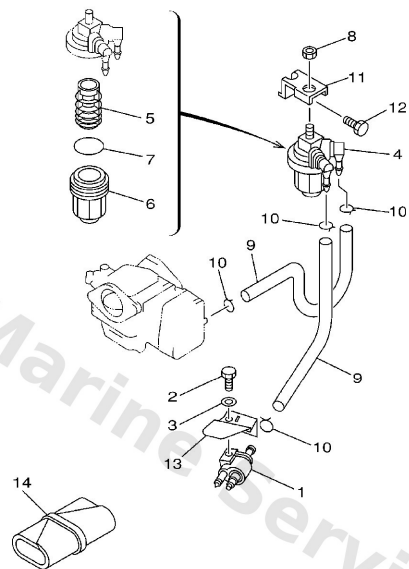
Electrical



C1

Ref	Part	
16	<a href="#">90464-08M02</a> Clamp	<a href="#">Buy now</a>
17	<a href="#">97095-06012</a> Bolt(gh1)	<a href="#">Buy now</a>
19	<a href="#">662-82519-00</a> Wire, earth lead	<a href="#">Buy now</a>

# Fuel

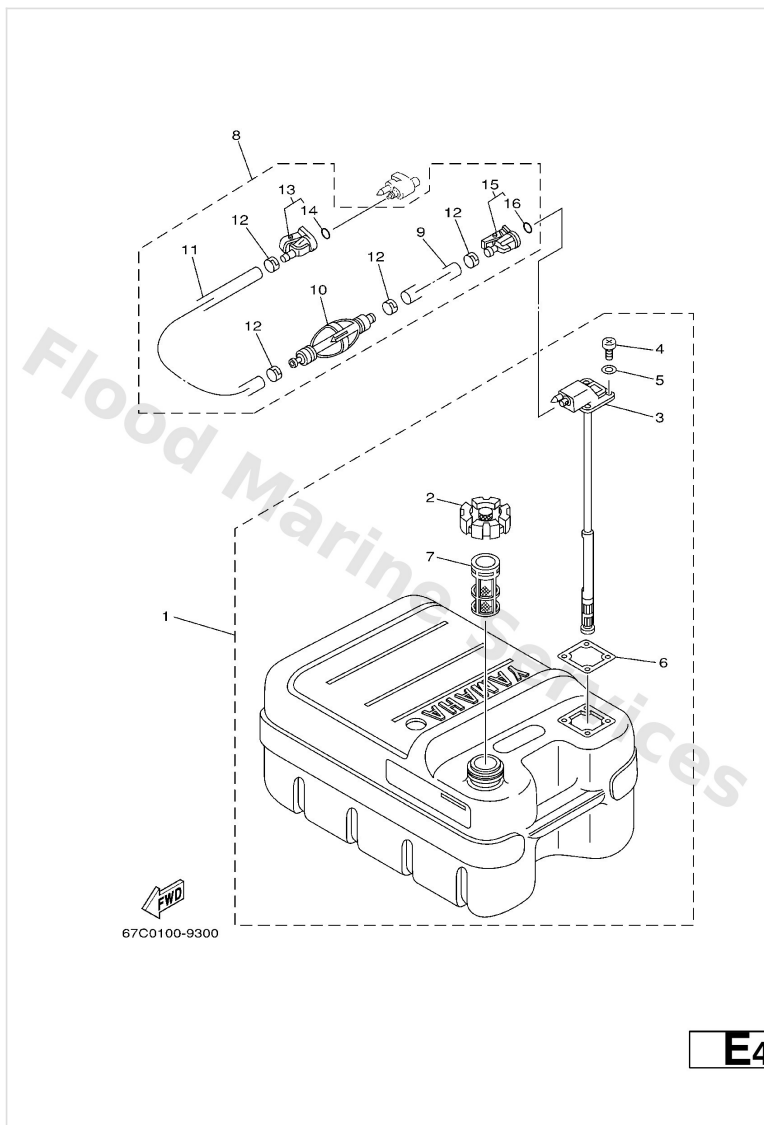


FWD  
63V0010-1060

**B4**

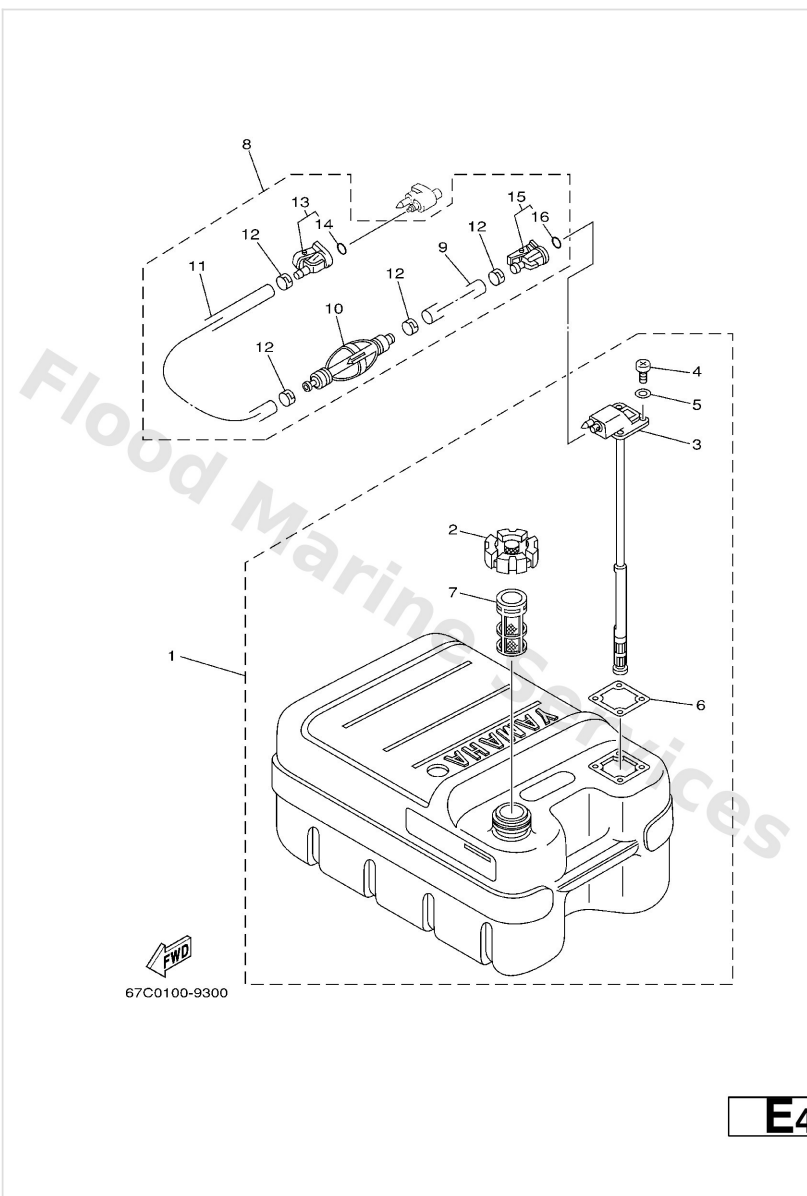
Ref	Part	
1	<a href="#">6G1-24304-02</a> Fuel pipe joint comp. 1	<a href="#">Buy now</a>
2	<a href="#">97095-06020</a> Bolt(7u8)	<a href="#">Buy now</a>
3	<a href="#">92995-06600</a> Washer, plain (646)	<a href="#">Buy now</a>
4	<a href="#">61N-24560-00</a> Filter assembly	<a href="#">Buy now</a>
5	<a href="#">61N-24563-00</a> Element, filter	<a href="#">Buy now</a>
6	<a href="#">61N-24521-00</a> Cup, filter	<a href="#">Buy now</a>
7	<a href="#">93210-32738</a> O-ring(1wg)	<a href="#">Buy now</a>
8	<a href="#">95380-08600</a> Nut (661)	<a href="#">Buy now</a>
9	<a href="#">90445-09M00</a> Hose (l180)	<a href="#">Buy now</a>
10	<a href="#">90467-08004</a> Clip, pipe 6162435600	<a href="#">Buy now</a>
11	<a href="#">682-24566-01</a> Bracket, filter	<a href="#">Buy now</a>
12	<a href="#">97013-06010</a> Bolt(63v)	<a href="#">Buy now</a>
13	<a href="#">63V-24396-01</a> Plate	<a href="#">Buy now</a>
14	<a href="#">656-W2810-02</a> Tool kit	<a href="#">Buy now</a>

# Fuel Tank



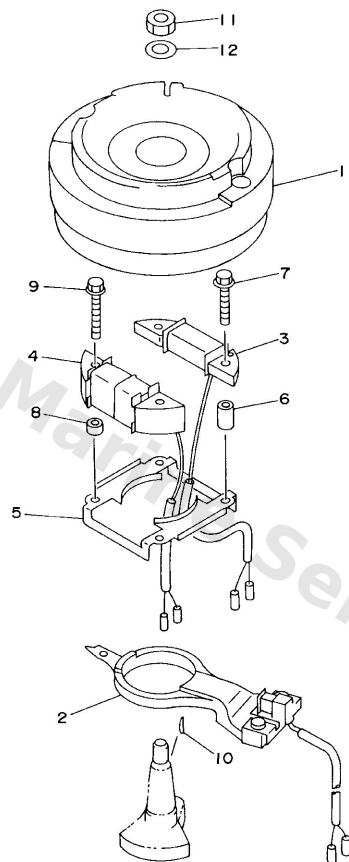
Ref	Part	
1	<a href="#">6YJ-24201-00</a> Fuel tank comp. AP	<a href="#">Buy now</a>
1	<a href="#">6YJ-24201-10</a> Fuel Tank assembly (24L) AP FOR CHINA,CARIB	<a href="#">Buy now</a>
2	<a href="#">6YJ-24610-00</a> Cap assembly	<a href="#">Buy now</a>
3	<a href="#">6Y1-24260-12</a> Fuel meter assembly FOR CHINA,CARIB	<a href="#">Buy now</a>
3	<a href="#">6YJ-24260-00</a> Fuel meter assembly	<a href="#">Buy now</a>
4	<a href="#">98586-05016</a> Screw, pan head	<a href="#">Buy now</a>
5	<a href="#">6Y1-24329-00</a> Seal	<a href="#">Buy now</a>
6	<a href="#">6Y1-24268-00</a> Gasket, fuel meter	<a href="#">Buy now</a>
7	<a href="#">6YJ-24167-00</a> Strainer	<a href="#">Buy now</a>
8	<a href="#">61J-24306-02</a> Fuel pipe comp. 1 AP	<a href="#">Buy now</a>
9	<a href="#">90445-11M06</a> Hose (I3000)	<a href="#">Buy now</a>
10	<a href="#">61J-24360-00</a> Primer pump assembly	<a href="#">Buy now</a>
11	<a href="#">90445-11M05</a> Hose (I1000)	<a href="#">Buy now</a>
12	<a href="#">650-24351-51</a> Band 1	<a href="#">Buy now</a>
13	<a href="#">6G1-24305-03</a> Fuel pipe joint comp. 2	<a href="#">Buy now</a>

# Fuel Tank



Ref	Part	
14	<a href="#">93210-08287</a> O-ring (655)	<a href="#">Buy now</a>
15	<a href="#">6Y1-24305-04</a> Fuel pipe joint comp. 2	<a href="#">Buy now</a>

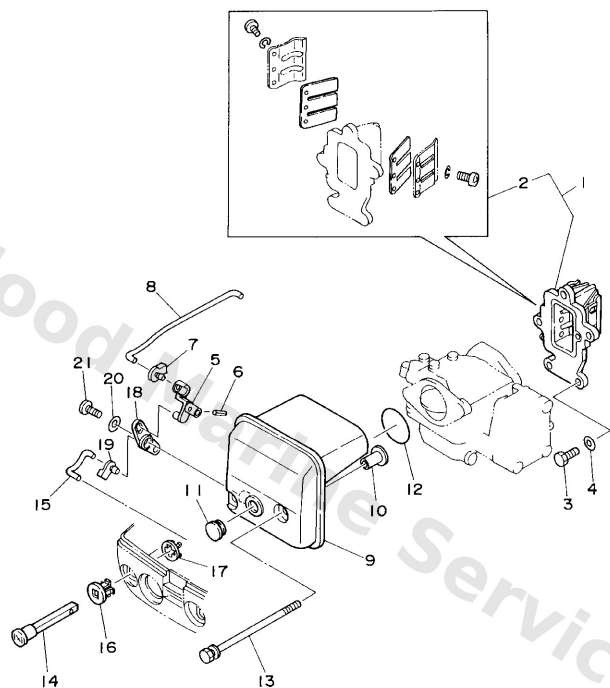
# Generator



**B7**

Ref	Part	
1	<a href="#">63V-85550-11</a> Rotor assembly	<a href="#">Buy now</a>
2	<a href="#">63V-85580-01</a> Coil, pulser	<a href="#">Buy now</a>
3	<a href="#">63V-85520-00</a> Coil, charge	<a href="#">Buy now</a>
4	<a href="#">63V-85533-00</a> Coil, lighting	<a href="#">Buy now</a>
5	<a href="#">63V-41611-00</a> Retainer, magneto base	<a href="#">Buy now</a>
6	<a href="#">90387-06M53</a> Collar (1m1)	<a href="#">Buy now</a>
7	<a href="#">90105-06M68</a> Bolt, washer based(63v)	<a href="#">Buy now</a>
8	<a href="#">90387-06M24</a> Collar(6r8)	<a href="#">Buy now</a>
9	<a href="#">90105-06M69</a> Bolt, washer based(63v)	<a href="#">Buy now</a>
9	<a href="#">97095-06012</a> Bolt(gh1) WITHOUT NO.4	<a href="#">Buy now</a>
10	<a href="#">90280-05013</a> Key, woodruff	<a href="#">Buy now</a>
11	<a href="#">90170-12066</a> Nut, hexagon 6481155500	<a href="#">Buy now</a>
12	<a href="#">90201-12472</a> Washer, plate (4n0)	<a href="#">Buy now</a>

# Intake

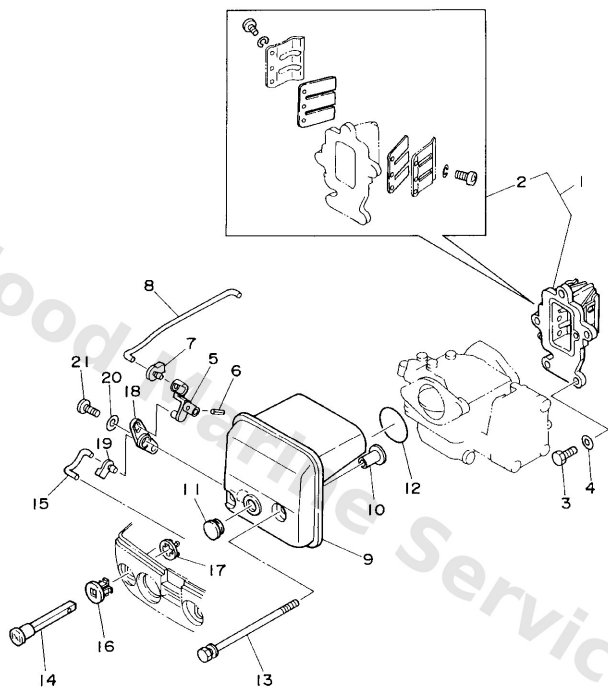


63V0010-5040

**B1**

Ref	Part	
1	<a href="#">63V-13610-10</a> Reed valve assembly	<a href="#">Buy now</a>
1	<a href="#">63W-13610-00</a> Reed valve assembly	<a href="#">Buy now</a>
2	<a href="#">682-W0004-00</a> Reed set	<a href="#">Buy now</a>
3	<a href="#">97095-06020</a> Bolt(7u8)	<a href="#">Buy now</a>
4	<a href="#">92995-06600</a> Washer, plain (646)	<a href="#">Buy now</a>
5	<a href="#">63V-41253-00</a> Lever, choke	<a href="#">Buy now</a>
6	<a href="#">91690-20010</a> Pin, spring	<a href="#">Buy now</a>
7	<a href="#">63V-41262-00</a> Joint, choke lever	<a href="#">Buy now</a>
8	<a href="#">63V-41257-00</a> Rod, choke 2	<a href="#">Buy now</a>
9	<a href="#">63V-14440-00</a> Silencer assembly, intake	<a href="#">Buy now</a>
10	<a href="#">90387-06M15</a> Collar(6g8)	<a href="#">Buy now</a>
11	<a href="#">90480-12M25</a> Grommet (6e9)	<a href="#">Buy now</a>
12	<a href="#">93210-35M86</a> O-ring(6l2)	<a href="#">Buy now</a>
13	<a href="#">90119-06M94</a> Bolt, with washer	<a href="#">Buy now</a>
14	<a href="#">6H4-41271-01</a> Knob, choke	<a href="#">Buy now</a>

# Intake

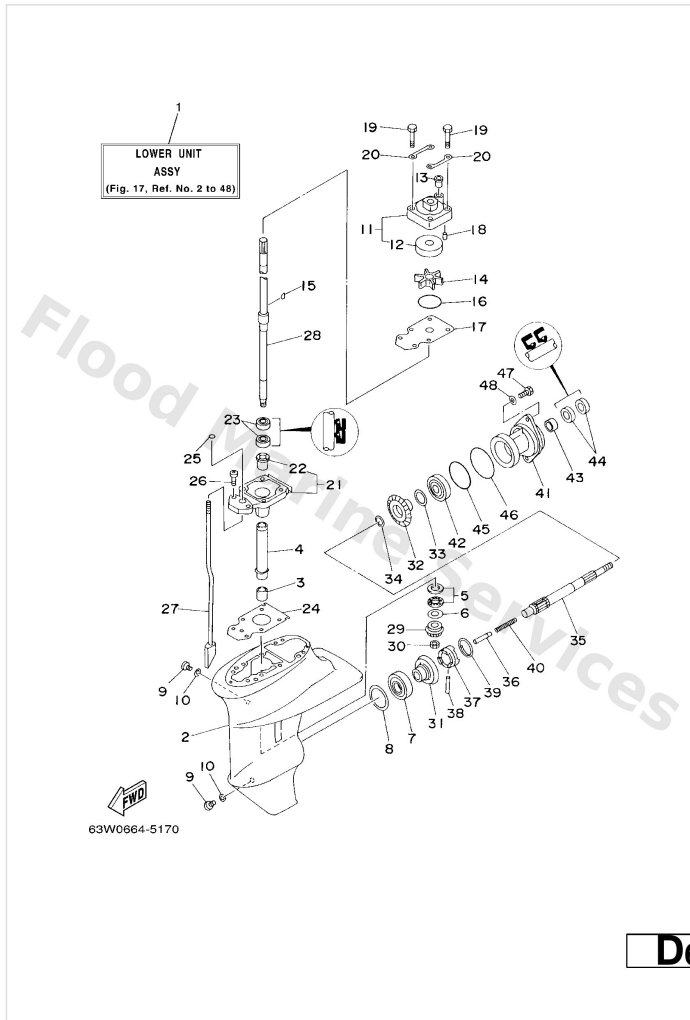


63V0010-5040

**B1**

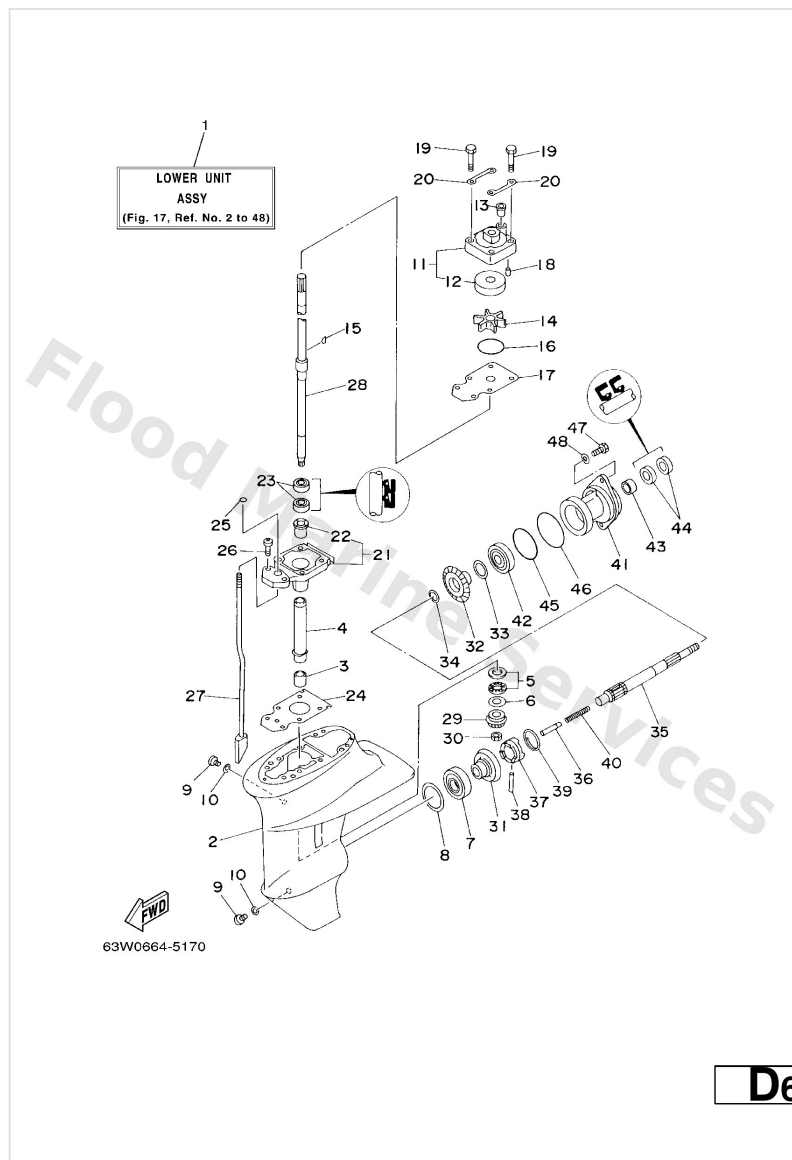
Ref	Part	
15	<a href="#">63V-41256-00</a> Rod, choke 1	<a href="#">Buy now</a>
16	<a href="#">689-41273-00</a> Grommet	<a href="#">Buy now</a>
17	<a href="#">6J8-41274-00</a> Grommet 2	<a href="#">Buy now</a>
18	<a href="#">63V-41252-00</a> Lever, choke 1	<a href="#">Buy now</a>
19	<a href="#">661-41262-02</a> Joint, choke lever	<a href="#">Buy now</a>
20	<a href="#">90201-05M09</a> Washer, plate(63v)	<a href="#">Buy now</a>
21	<a href="#">90164-05M03</a> Screw, tapping(6g8)	<a href="#">Buy now</a>

# Lower Casing. Drive 1



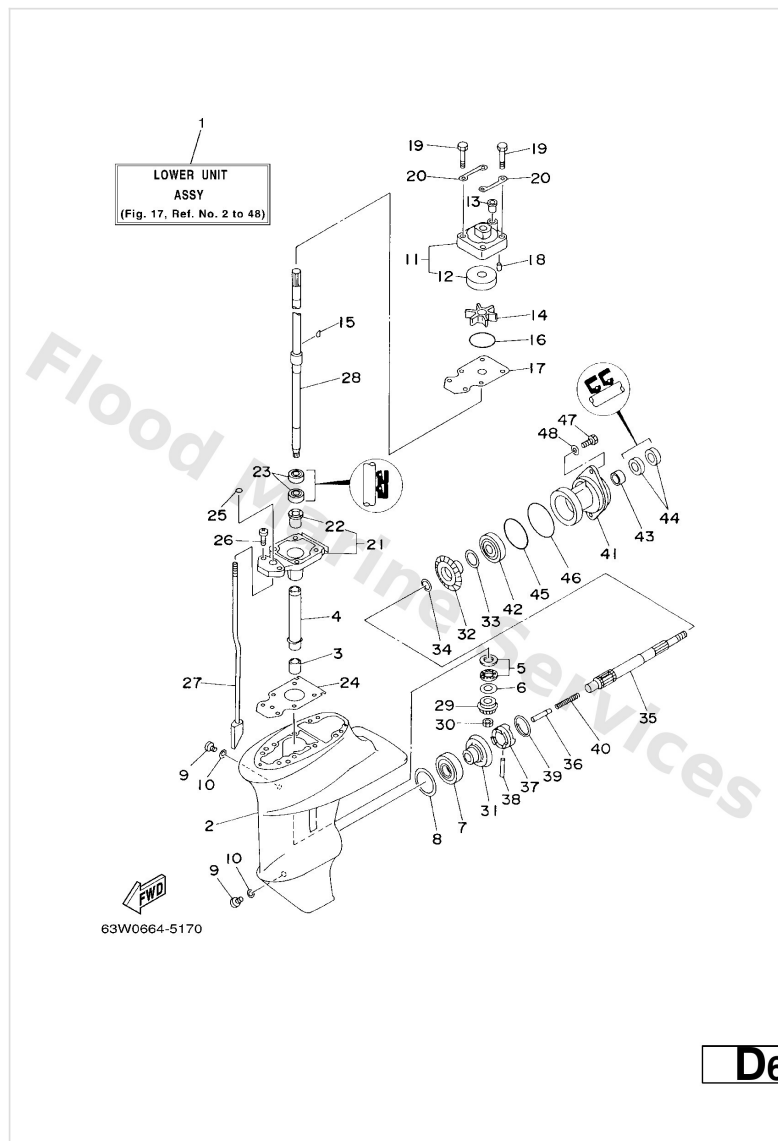
Ref	Part	
1	<a href="#">63V-45300-03-4D</a> Lower unit assembly S	<a href="#">Buy now</a>
1	<a href="#">63V-45300-13-4D</a> Lower unit assembly L	<a href="#">Buy now</a>
1	<a href="#">65E-45300-02-4D</a> 17 – S	<a href="#">Buy now</a>
1	<a href="#">65E-45300-12-4D</a> 17 – L	<a href="#">Buy now</a>
1	<a href="#">65E-45300-32-4D</a> 17 – U	<a href="#">Buy now</a>
2	<a href="#">63V-45311-01-4D</a> Casing, lower	<a href="#">Buy now</a>
3	<a href="#">93315-314V8</a> Bearing, needle (6e7)	<a href="#">Buy now</a>
4	<a href="#">63V-45536-00</a> Sleeve, drive shaft	<a href="#">Buy now</a>
5	<a href="#">93341-41414</a> Bearing	<a href="#">Buy now</a>
6	<a href="#">6E8-45587-10-13</a> Shim (t:1.13mm) UR	<a href="#">Buy now</a>
6	<a href="#">6E8-45587-10-20</a> Shim (t:1.20mm) UR	<a href="#">Buy now</a>
7	<a href="#">93332-00005</a> Brg,cyl-cal roller 0.19g nt	<a href="#">Buy now</a>
8	<a href="#">664-45567-01-10</a> Shim (t:0.10mm) UR	<a href="#">Buy now</a>
8	<a href="#">664-45567-01-12</a> Shim (t:0.12mm) UR	<a href="#">Buy now</a>
8	<a href="#">664-45567-01-15</a> Shim (t:0.15mm) UR	<a href="#">Buy now</a>

## Lower Casing. Drive 1



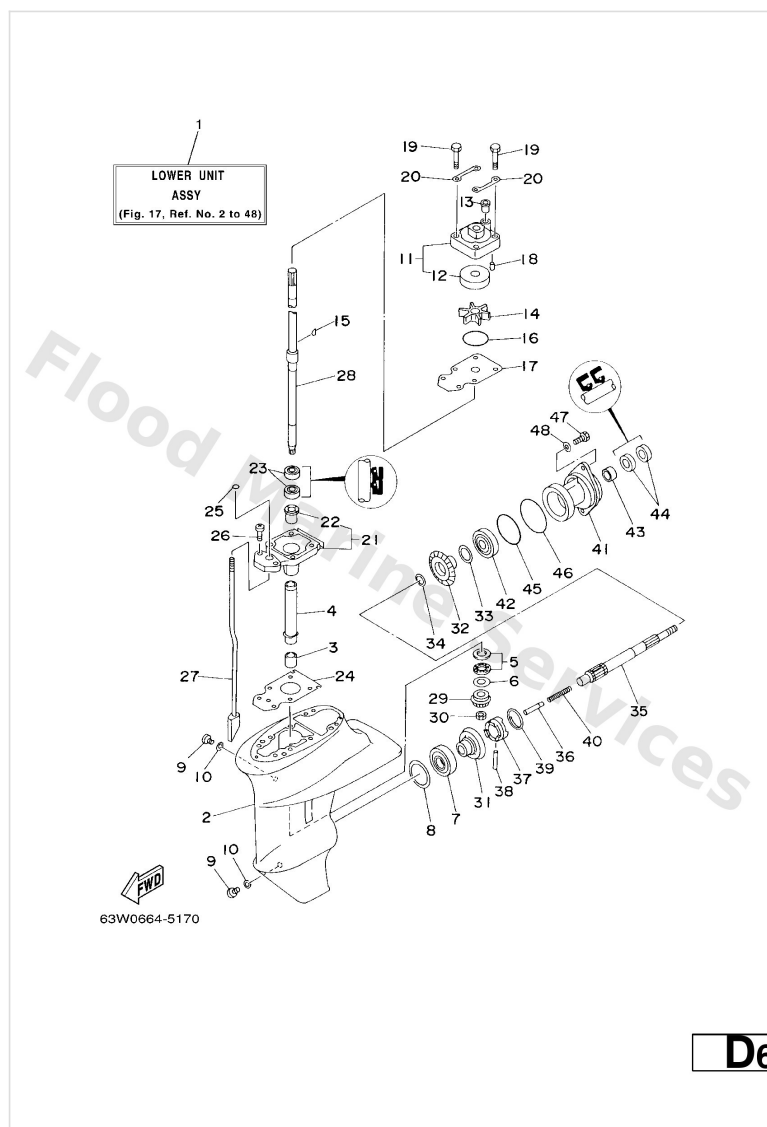
Ref	Part	
8	<a href="#">664-45567-01-18</a> Shim (t:0.18mm) UR	<a href="#">Buy now</a>
8	<a href="#">664-45567-01-30</a> Shim (t:0.30mm) UR	<a href="#">Buy now</a>
8	<a href="#">664-45567-01-40</a> Shim (t:0.40mm) UR	<a href="#">Buy now</a>
8	<a href="#">664-45567-01-50</a> Shim (t:0.50mm) UR	<a href="#">Buy now</a>
9	<a href="#">90340-08002</a> Plug, straight screw	<a href="#">Buy now</a>
10	<a href="#">90430-08020</a> Gasket	<a href="#">Buy now</a>
11	<a href="#">63V-44301-00</a> Water pump housing comp.	<a href="#">Buy now</a>
11	<a href="#">63V-44301-40</a> Water pump housing comp. FOR CHROMATE	<a href="#">Buy now</a>
12	<a href="#">63V-44322-00</a> Insert, cartridge	<a href="#">Buy now</a>
12	<a href="#">63V-44322-40</a> Insert, cartridge	<a href="#">Buy now</a>
13	<a href="#">647-44366-00</a> Damper, water seal 2	<a href="#">Buy now</a>
14	<a href="#">63V-44352-01</a> Impeller	<a href="#">Buy now</a>
15	<a href="#">63V-44338-00</a> Key, woodruff	<a href="#">Buy now</a>
16	<a href="#">93210-44398</a> O-ring(55x)	<a href="#">Buy now</a>
17	<a href="#">63V-44323-00</a> Outer plate, cartridge	<a href="#">Buy now</a>

## Lower Casing. Drive 1



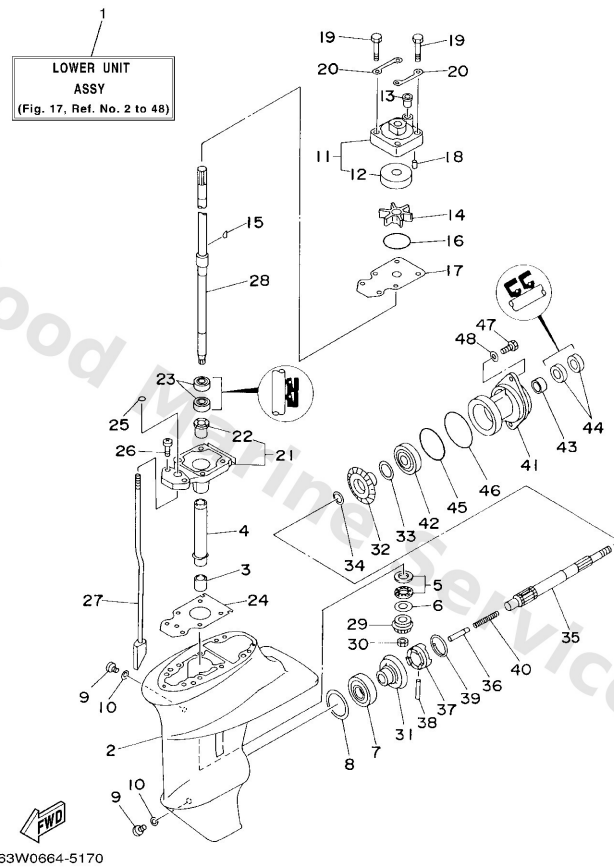
Ref	Part	
17	<a href="#">63V-44323-40</a> Outer plate, cartridge FOR CHROMATE	<a href="#">Buy now</a>
18	<a href="#">93604-12M07</a> Pin, dowel (688)	<a href="#">Buy now</a>
19	<a href="#">97080-08045</a> Bolt, hexagon	<a href="#">Buy now</a>
20	<a href="#">63V-44328-00</a> Plate	<a href="#">Buy now</a>
21	<a href="#">63V-45331-00-5B</a> Housing, bearing	<a href="#">Buy now</a>
22	<a href="#">90381-14020</a> Bushing, drive shaft 1	<a href="#">Buy now</a>
23	<a href="#">93101-20048</a> Oil seal (20x30x6-648)	<a href="#">Buy now</a>
24	<a href="#">63V-45315-A0</a> Packing, lower casing	<a href="#">Buy now</a>
25	<a href="#">93210-06ME6</a> O-ring	<a href="#">Buy now</a>
26	<a href="#">97080-08025</a> Screw, bind(j36)	<a href="#">Buy now</a>
27	<a href="#">63V-44150-00</a> Shift cam assembly S	<a href="#">Buy now</a>
27	<a href="#">63V-44150-10</a> Shift cam assembly L	<a href="#">Buy now</a>
27	<a href="#">63V-44150-30</a> Shift Cam assembly U	<a href="#">Buy now</a>
28	<a href="#">63V-45510-01</a> Drive shaft assembly S	<a href="#">Buy now</a>
28	<a href="#">63V-45510-11</a> Drive shaft assembly L	<a href="#">Buy now</a>

## Lower Casing. Drive 1



Ref	Part	
28	<a href="#">63V-45510-31</a> 17 – U	<a href="#">Buy now</a>
29	<a href="#">63V-45551-00</a> Pinion	<a href="#">Buy now</a>
30	<a href="#">90179-08M06</a> Nut (6e7)	<a href="#">Buy now</a>
31	<a href="#">6E7-45560-01</a> Gear	<a href="#">Buy now</a>
32	<a href="#">6E7-45571-00</a> Gear 2	<a href="#">Buy now</a>
33	<a href="#">626-45577-00-01</a> Shim (t:0.10mm) UR	<a href="#">Buy now</a>
33	<a href="#">626-45577-00-03</a> Shim (t:0.30mm) UR	<a href="#">Buy now</a>
33	<a href="#">626-45577-00-05</a> Shim (t:0.50mm) UR	<a href="#">Buy now</a>
34	<a href="#">90201-17682</a> Washer, plate (2k7)	<a href="#">Buy now</a>
35	<a href="#">683-45611-00</a> Shaft propeller	<a href="#">Buy now</a>
36	<a href="#">650-45635-00</a> Plunger, shift	<a href="#">Buy now</a>
37	<a href="#">682-45631-00</a> Clutch, dog	<a href="#">Buy now</a>
38	<a href="#">90250-05010</a> Pin straight 648456320000	<a href="#">Buy now</a>
39	<a href="#">648-45633-00</a> Ring, cross pin	<a href="#">Buy now</a>
40	<a href="#">90501-14M06</a> Spring, compression	<a href="#">Buy now</a>

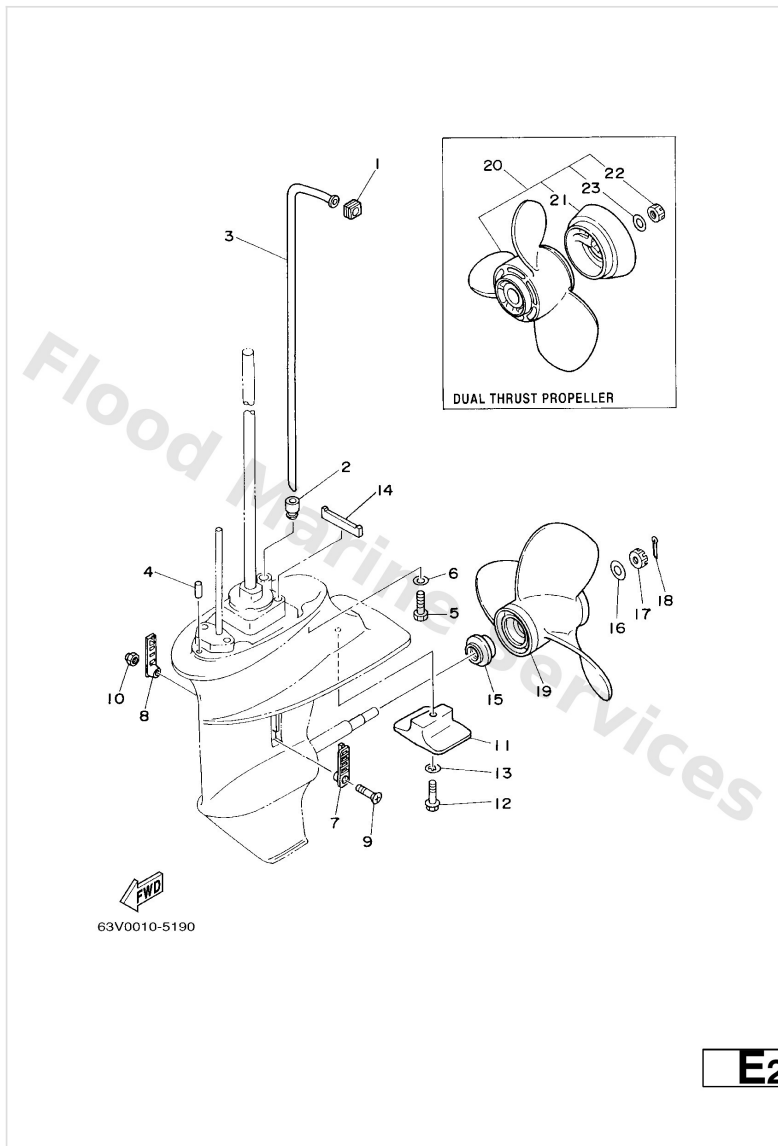
## Lower Casing. Drive 1



**D6**

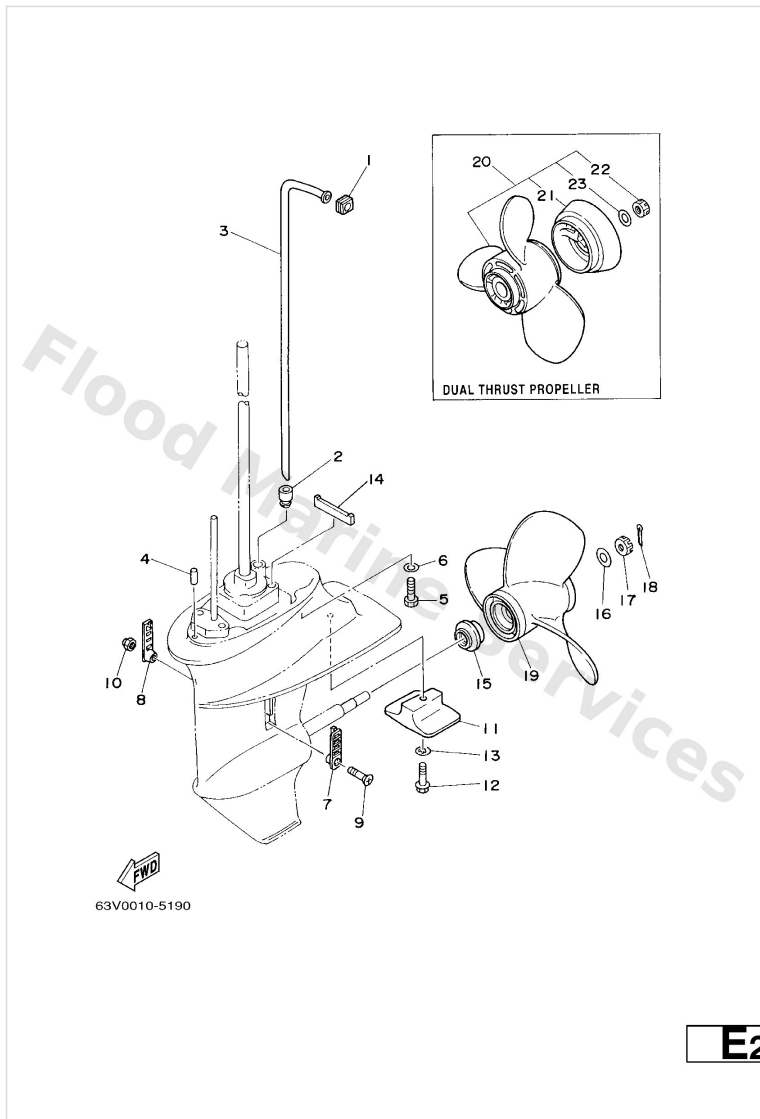
Ref	Part	
41	<a href="#">683-45361-02-4D</a> Cap, lower casing	<a href="#">Buy now</a>
42	<a href="#">93306-00501</a> Bearing(1ff)	<a href="#">Buy now</a>
43	<a href="#">93315-317U2</a> Brg,cyl-cal roller 14g (683)	<a href="#">Buy now</a>
44	<a href="#">93101-17054</a> Oil seal (17x30x6-650)	<a href="#">Buy now</a>
45	<a href="#">93210-57M09</a> O-ring (683)	<a href="#">Buy now</a>
46	<a href="#">93210-56M80</a> O-ring(6j8)	<a href="#">Buy now</a>
47	<a href="#">97095-06020</a> Bolt(7u8)	<a href="#">Buy now</a>
48	<a href="#">92995-06600</a> Washer, plain (646)	<a href="#">Buy now</a>

## Lower Casing. Drive 2



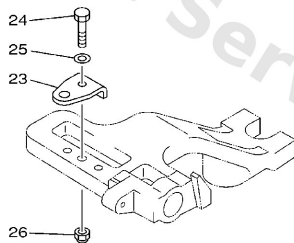
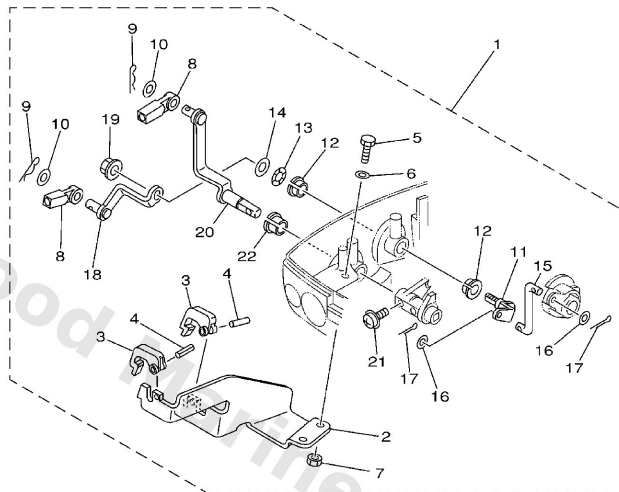
Ref	Part	
1	<a href="#">63V-44365-10</a> Damper, water seal 1	<a href="#">Buy now</a>
2	<a href="#">63V-44368-00</a> Rubber, water seal 4	<a href="#">Buy now</a>
3	<a href="#">63V-44361-01</a> Tube, water S	<a href="#">Buy now</a>
3	<a href="#">63V-44361-11</a> Tube, water L	<a href="#">Buy now</a>
3	<a href="#">63V-44361-31</a> Tube, Water U	<a href="#">Buy now</a>
4	<a href="#">93604-12M07</a> Pin, dowel (688)	<a href="#">Buy now</a>
5	<a href="#">97075-08030</a> Bolt, hexagon (fj1)	<a href="#">Buy now</a>
6	<a href="#">92995-08600</a> Washer, plain (663)	<a href="#">Buy now</a>
7	<a href="#">6G1-45214-00</a> Cover, water inlet	<a href="#">Buy now</a>
8	<a href="#">63V-45215-00</a> Cover, water inlet	<a href="#">Buy now</a>
9	<a href="#">90152-05M04</a> Screw, countersunk	<a href="#">Buy now</a>
10	<a href="#">90185-05002</a> Nut nylon (sus)(ex4)	<a href="#">Buy now</a>
11	<a href="#">61N-45251-01</a> Anode	<a href="#">Buy now</a>
12	<a href="#">95895-06030</a> Bolt, flange deep recess	<a href="#">Buy now</a>
13	<a href="#">92990-06300</a> Washer, tooth	<a href="#">Buy now</a>

## Lower Casing. Drive 2



Ref	Part	
14	<a href="#">63V-45375-00</a> Damper, seal	<a href="#">Buy now</a>
15	<a href="#">6E7-45987-01</a> Spacer	<a href="#">Buy now</a>
16	<a href="#">90201-10M01</a> Washer, plate(6m7)	<a href="#">Buy now</a>
17	<a href="#">90171-10M01</a> Nut castle (683)	<a href="#">Buy now</a>
18	<a href="#">91490-30020</a> Pin cotter	<a href="#">Buy now</a>
19	<a href="#">63V-45943-00-EL</a> Propeller (3x9-1/4 x11 -j1) UR	<a href="#">Buy now</a>
19	<a href="#">683-45941-00-EL</a> Propeller (3x9-1/4"x12"-j) UR	<a href="#">Buy now</a>
19	<a href="#">683-45943-00-EL</a> Propeller (3x9-1/4"x10-1/2"-j) UR	<a href="#">Buy now</a>
19	<a href="#">683-45945-00-EL</a> Propeller (3X9-1/4"X9"-j) UR	<a href="#">Buy now</a>
19	<a href="#">683-45947-00-EL</a> Propeller (3X9-1/4"x8"-j) UR	<a href="#">Buy now</a>
19	<a href="#">683-45949-00-EL</a> Propeller (3x9-1/2"x6-1/2"-j) UR	<a href="#">Buy now</a>
19	<a href="#">683-45952-00-EL</a> Propeller (3X9-1/4"x9-3/4"-j) UR	<a href="#">Buy now</a>
21	<a href="#">6E7-45986-00</a> Ring, deflector	<a href="#">Buy now</a>
22	<a href="#">90171-10M07</a> Nut, castle(6g8)	<a href="#">Buy now</a>
23	<a href="#">90201-10M02</a> Washer, plate(6g9)	<a href="#">Buy now</a>

# Remote Control Attachment

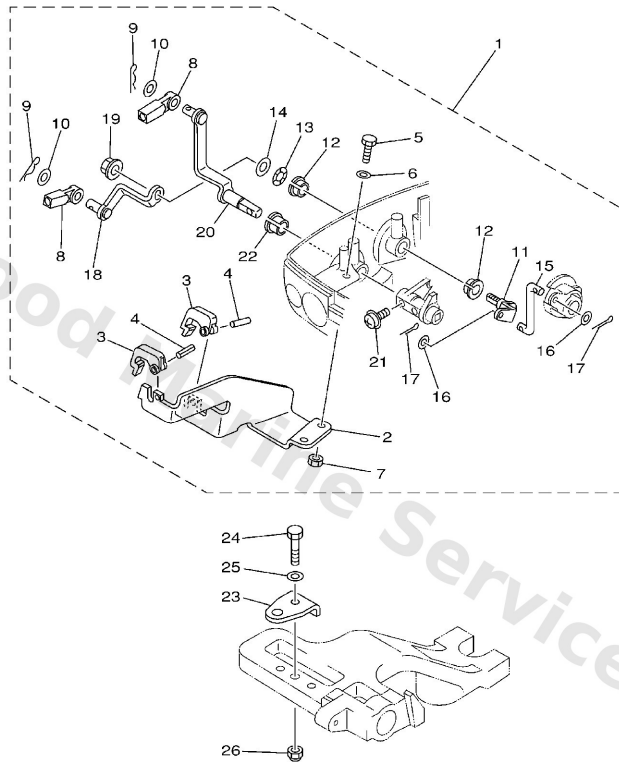


63V1100-2140

**C7**

Ref	Part	
1	<a href="#">63V-48501-00</a> Remote cont. attachment assembly AP	<a href="#">Buy now</a>
2	<a href="#">63V-48531-00</a> Bracket, remote control 1	<a href="#">Buy now</a>
3	<a href="#">682-48538-50</a> Clamp, cable	<a href="#">Buy now</a>
4	<a href="#">91690-30012</a> Pin, spring	<a href="#">Buy now</a>
5	<a href="#">97095-06016</a> Bolt, hexagon deep recess	<a href="#">Buy now</a>
6	<a href="#">92995-06600</a> Washer, plain (646)	<a href="#">Buy now</a>
7	<a href="#">95380-06600</a> Nut(661)	<a href="#">Buy now</a>
8	<a href="#">663-48344-00</a> Cable end, remote control	<a href="#">Buy now</a>
9	<a href="#">90468-18008</a> Clip 620436610000	<a href="#">Buy now</a>
10	<a href="#">90201-08M12</a> Washer plate (682)	<a href="#">Buy now</a>
11	<a href="#">63V-42154-00</a> Lever, throttle control	<a href="#">Buy now</a>
12	<a href="#">90386-10025</a> Bushing (658)	<a href="#">Buy now</a>
13	<a href="#">90206-10M04</a> Washer, wave (676)	<a href="#">Buy now</a>
14	<a href="#">90201-10M02</a> Washer, plate(6g9)	<a href="#">Buy now</a>
15	<a href="#">63V-42192-00</a> Rod 2	<a href="#">Buy now</a>

# Remote Control Attachment

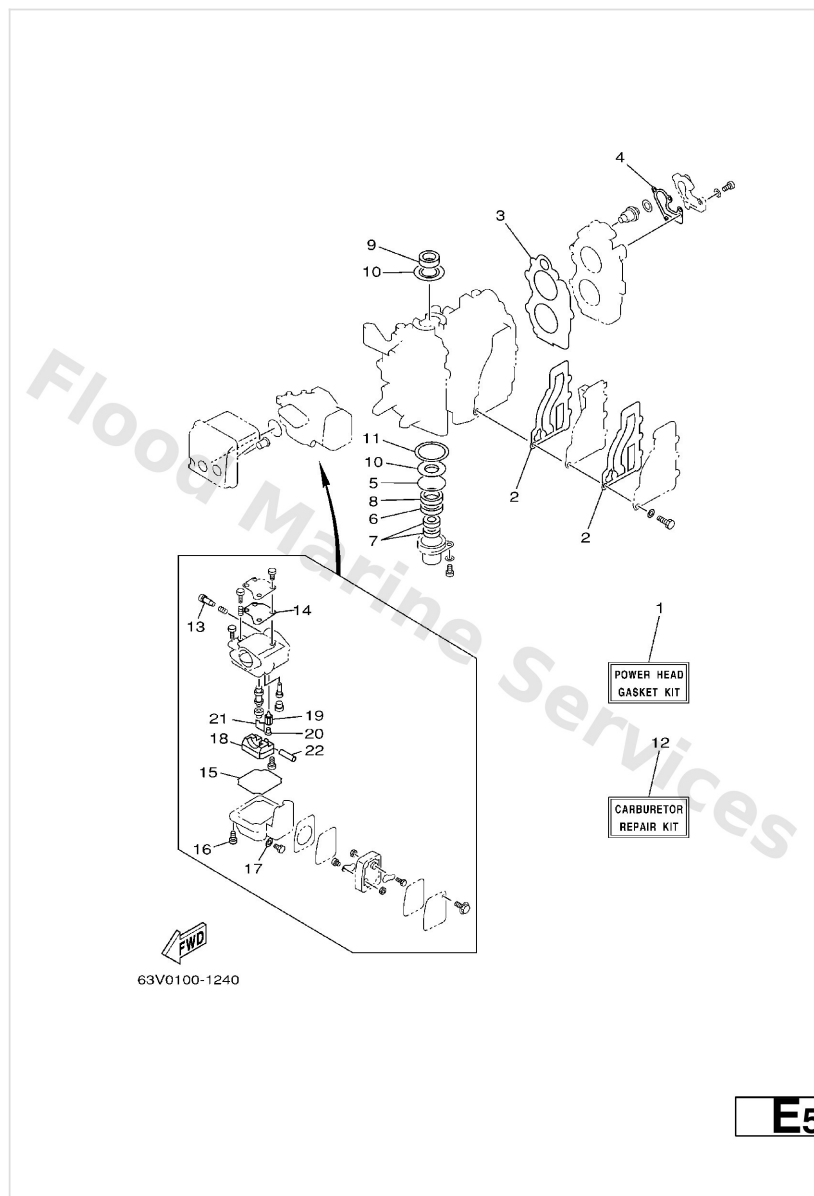


63V1100-2140

**C7**

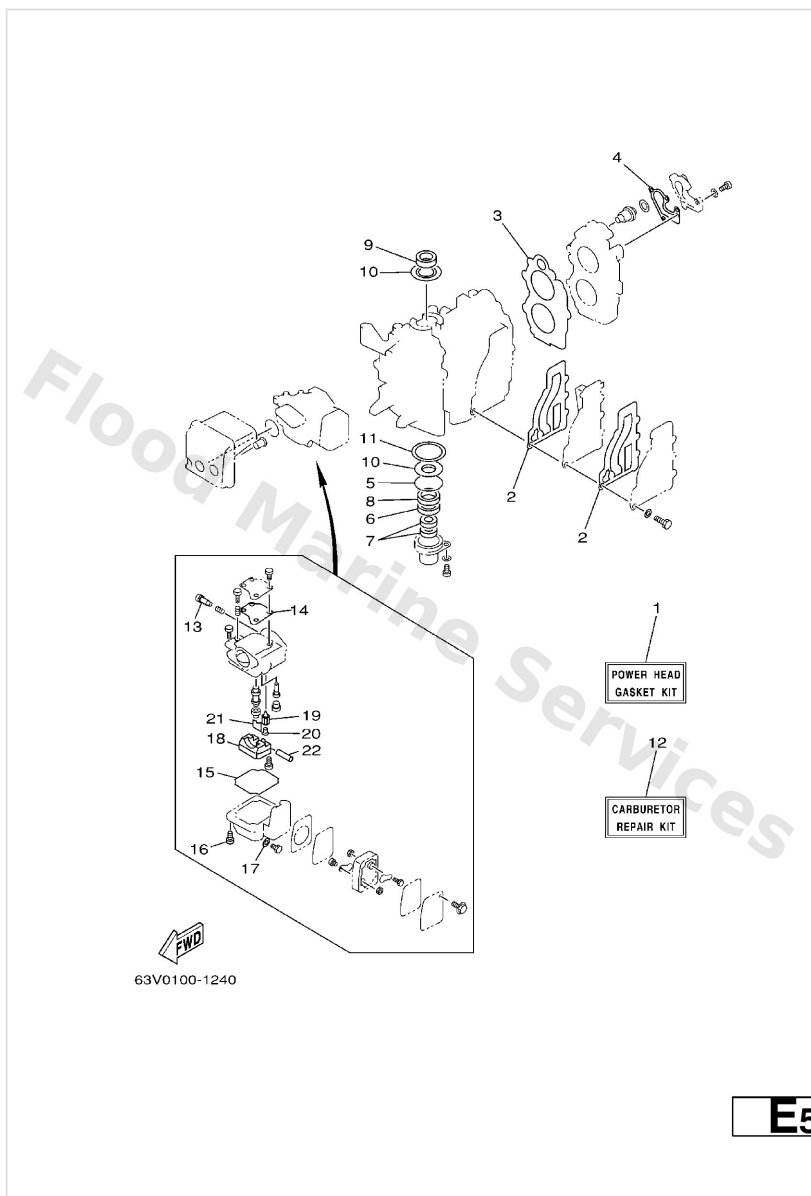
Ref	Part	
16	<a href="#">90201-04M06</a> Washer, plate(26h)	<a href="#">Buy now</a>
17	<a href="#">91490-20010</a> Pin, cotter	<a href="#">Buy now</a>
18	<a href="#">63V-48534-00</a> Throttle lever, control	<a href="#">Buy now</a>
19	<a href="#">95780-08300</a> Nut, nylon (6j8)	<a href="#">Buy now</a>
20	<a href="#">63V-48544-00</a> Lever, shiftcontrol	<a href="#">Buy now</a>
21	<a href="#">90159-05M25</a> Screw,pan head (646)	<a href="#">Buy now</a>
22	<a href="#">90386-10009</a> Bushing 6484418600	<a href="#">Buy now</a>
23	<a href="#">63V-48511-01</a> Hook, steering AP	<a href="#">Buy now</a>
24	<a href="#">97075-08035</a> Bolt(70w) AP	<a href="#">Buy now</a>
25	<a href="#">92995-08600</a> Washer, plain (663) AP	<a href="#">Buy now</a>
26	<a href="#">90185-08057</a> Nut, nylon (6j8) AP	<a href="#">Buy now</a>

# Repair Kit 1



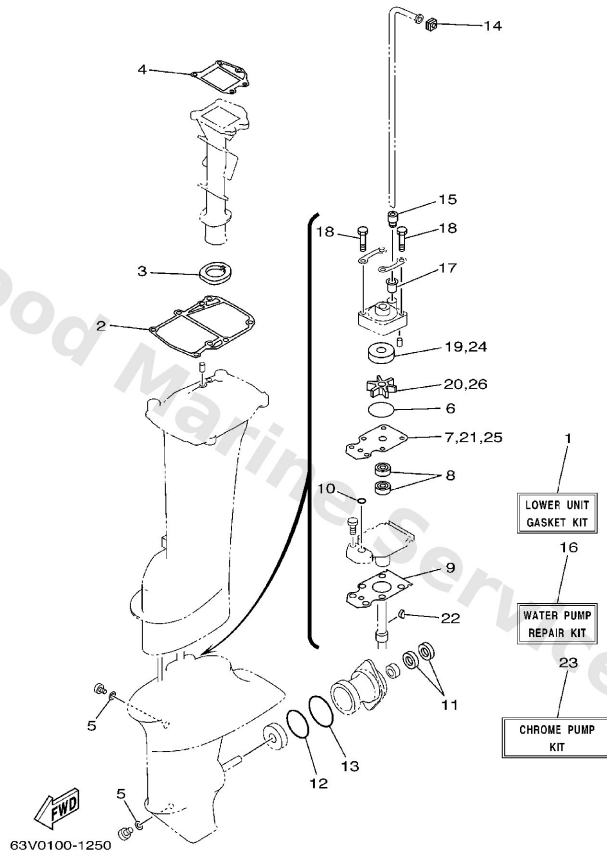
Ref	Part	
1	<a href="#">63V-W0001-02</a> Gasket kit	<a href="#">Buy now</a>
2	<a href="#">63V-41112-A0</a> Gasket, exhaust inner cover	<a href="#">Buy now</a>
3	<a href="#">63V-11181-A1</a> Gasket, cylinder head 1	<a href="#">Buy now</a>
4	<a href="#">682-12414-A1</a> Gasket, cover	<a href="#">Buy now</a>
5	<a href="#">93210-46M16</a> O-ring (688)	<a href="#">Buy now</a>
6	<a href="#">93101-25018</a> Oil seal	<a href="#">Buy now</a>
7	<a href="#">93101-13018</a> Oil seal	<a href="#">Buy now</a>
8	<a href="#">93102-25M48</a> Oil seal(63v)	<a href="#">Buy now</a>
9	<a href="#">93110-23M00</a> Oil seal (682)	<a href="#">Buy now</a>
10	<a href="#">63V-11445-00</a> Spacer	<a href="#">Buy now</a>
11	<a href="#">90201-46M29</a> Washer, plate(63v)	<a href="#">Buy now</a>
12	<a href="#">63V-W0093-00</a> Carburetor repair kit	<a href="#">Buy now</a>
13	<a href="#">679-14923-00</a> Screw, pilot	<a href="#">Buy now</a>
14	<a href="#">63V-14126-00</a> Gasket	<a href="#">Buy now</a>
15	<a href="#">63V-14984-00</a> Gasket, float chamber	<a href="#">Buy now</a>

# Repair Kit 1



Ref	Part	
16	<a href="#">97980-04114</a> Screw, pan head(ga5)	<a href="#">Buy now</a>
17	<a href="#">6G1-14398-00</a> Washer	<a href="#">Buy now</a>
18	<a href="#">63V-14985-00</a> Float	<a href="#">Buy now</a>
19	<a href="#">6G1-14546-01</a> Valve, needle	<a href="#">Buy now</a>
20	<a href="#">676-14186-00</a> Pin, valve	<a href="#">Buy now</a>
21	<a href="#">663-14159-00</a> Clip	<a href="#">Buy now</a>
22	<a href="#">6H4-14548-00</a> Pin, float arm	<a href="#">Buy now</a>

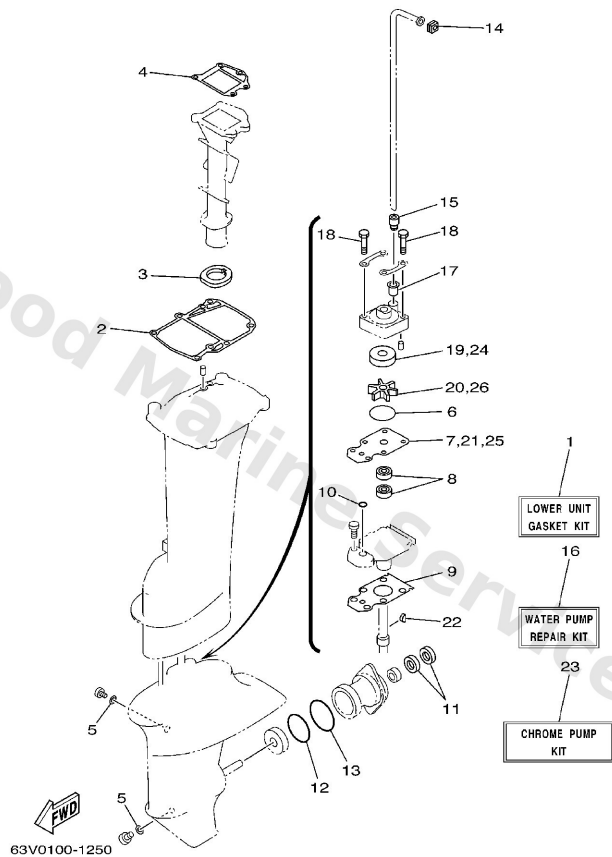
## Repair Kit 2



**E6**

Ref	Part	
1	<a href="#">63V-W0001-22</a> Lower unit gasket kit	<a href="#">Buy now</a>
1	<a href="#">65G-W0001-C1</a> 21 – FOR CHROMATE	<a href="#">Buy now</a>
2	<a href="#">63V-45113-A1</a> Gasket, upper casing	<a href="#">Buy now</a>
3	<a href="#">63V-41135-00</a> Gasket, exhaust manifold	<a href="#">Buy now</a>
4	<a href="#">63V-41133-A1</a> Gasket, exhaust manifold 1	<a href="#">Buy now</a>
5	<a href="#">90430-08020</a> Gasket	<a href="#">Buy now</a>
6	<a href="#">93210-44398</a> O-ring(55x)	<a href="#">Buy now</a>
7	<a href="#">63V-44323-00</a> Outer plate, cartridge	<a href="#">Buy now</a>
7	<a href="#">63V-44323-40</a> Outer plate, cartridge	<a href="#">Buy now</a>
8	<a href="#">93101-20048</a> Oil seal (20x30x6-648)	<a href="#">Buy now</a>
9	<a href="#">63V-45315-A0</a> Packing, lower casing	<a href="#">Buy now</a>
10	<a href="#">93210-06ME6</a> O-ring	<a href="#">Buy now</a>
11	<a href="#">93101-17054</a> Oil seal (17x30x6-650)	<a href="#">Buy now</a>
12	<a href="#">93210-57M09</a> O-ring (683)	<a href="#">Buy now</a>
13	<a href="#">93210-56M80</a> O-ring(6j8)	<a href="#">Buy now</a>

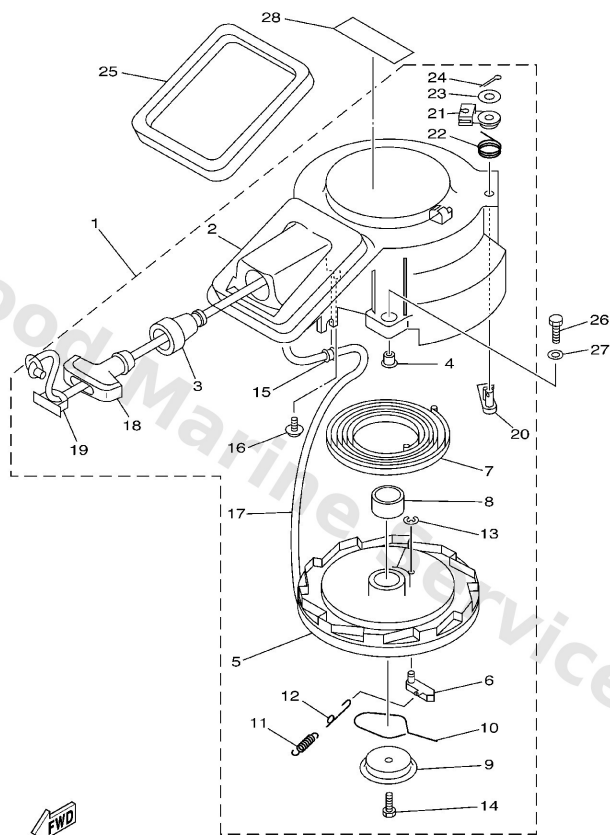
## Repair Kit 2



**E6**

Ref	Part	
14	<a href="#">63V-44365-10</a> Damper, water seal 1	<a href="#">Buy now</a>
15	<a href="#">63V-44368-00</a> Rubber, water seal 4	<a href="#">Buy now</a>
16	<a href="#">63V-W0078-01</a> Water pump repair kit	<a href="#">Buy now</a>
16	<a href="#">65G-W0078-01</a> 21 – <b>FOR CHROMATE</b>	<a href="#">Buy now</a>
17	<a href="#">647-44366-00</a> Damper, water seal 2	<a href="#">Buy now</a>
18	<a href="#">97080-08045</a> Bolt, hexagon	<a href="#">Buy now</a>
19	<a href="#">63V-44322-00</a> Insert, cartridge	<a href="#">Buy now</a>
19	<a href="#">63V-44322-40</a> Insert, cartridge	<a href="#">Buy now</a>
20	<a href="#">63V-44352-01</a> Impeller	<a href="#">Buy now</a>
22	<a href="#">63V-44338-00</a> Key, woodruff	<a href="#">Buy now</a>
23	<a href="#">63V-W0078-0A</a> Water pump repair kit	<a href="#">Buy now</a>

# Starter

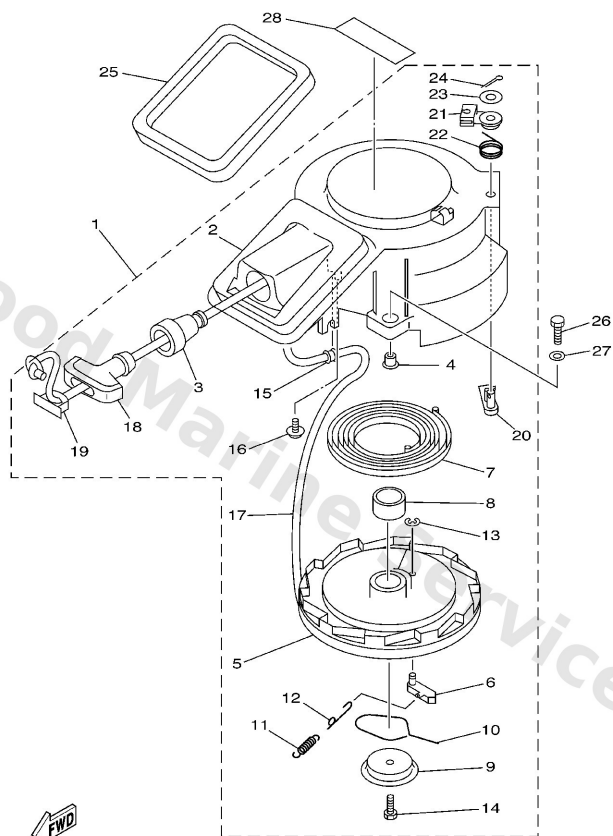


63V1200-2070

**B5**

Ref	Part	
1	<a href="#">63V-15710-12</a> Starter assembly WITH SAFETY DEVICE	<a href="#">Buy now</a>
2	<a href="#">63V-15711-01</a> Case, starter	<a href="#">Buy now</a>
3	<a href="#">63V-15795-01</a> Guide, rope	<a href="#">Buy now</a>
4	<a href="#">90387-06M05</a> Collar(6h4)	<a href="#">Buy now</a>
5	<a href="#">63V-15714-00</a> Drum, sheave	<a href="#">Buy now</a>
6	<a href="#">63V-15741-00</a> Pawl, drive	<a href="#">Buy now</a>
7	<a href="#">63V-15713-00</a> Spring, starter	<a href="#">Buy now</a>
8	<a href="#">63V-15753-00</a> Bush	<a href="#">Buy now</a>
9	<a href="#">63V-15716-00</a> Plate, drive	<a href="#">Buy now</a>
10	<a href="#">63V-15705-01</a> Spring, drive pawl	<a href="#">Buy now</a>
11	<a href="#">63V-15767-01</a> Spring	<a href="#">Buy now</a>
12	<a href="#">63V-15784-01</a> Spring, return	<a href="#">Buy now</a>
13	<a href="#">63V-15744-00</a> Circlip	<a href="#">Buy now</a>
14	<a href="#">63V-15768-00</a> Screw	<a href="#">Buy now</a>
15	<a href="#">63V-15764-00</a> Collar 1	<a href="#">Buy now</a>

# Starter

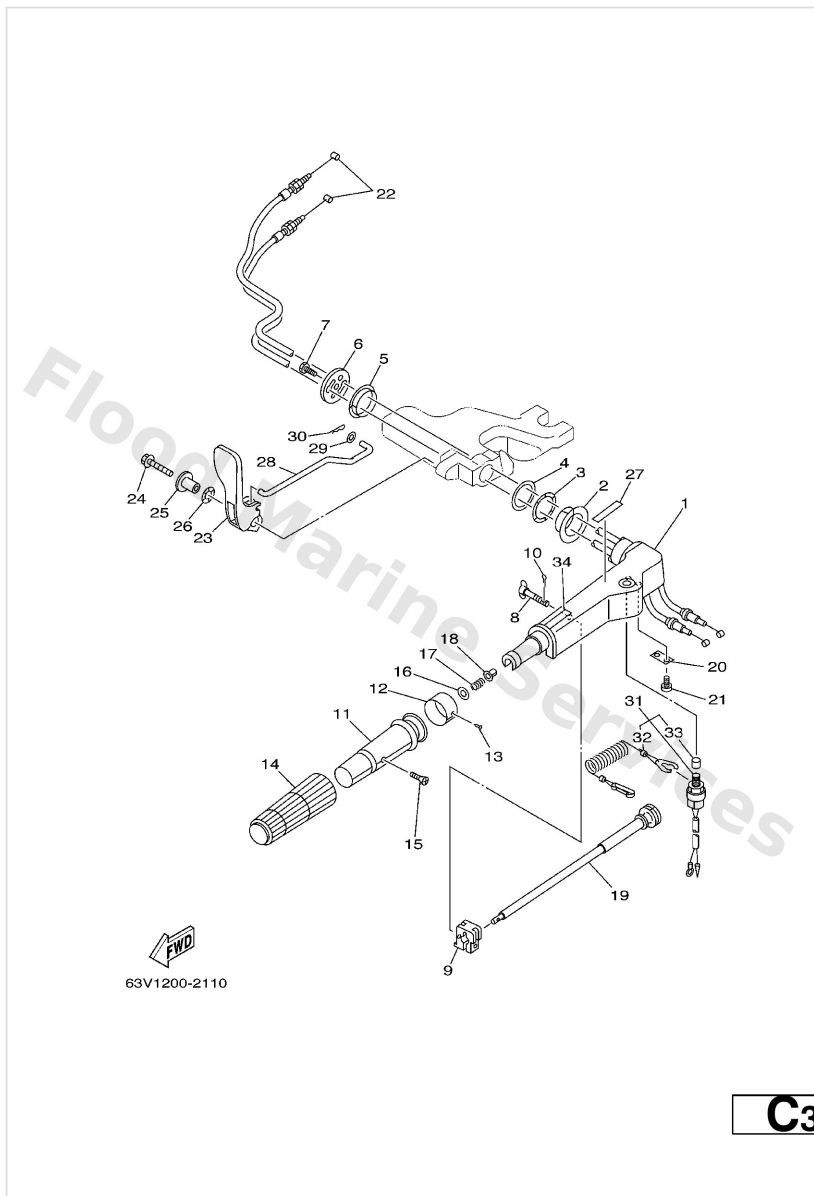


63V1200-2070

**B5**

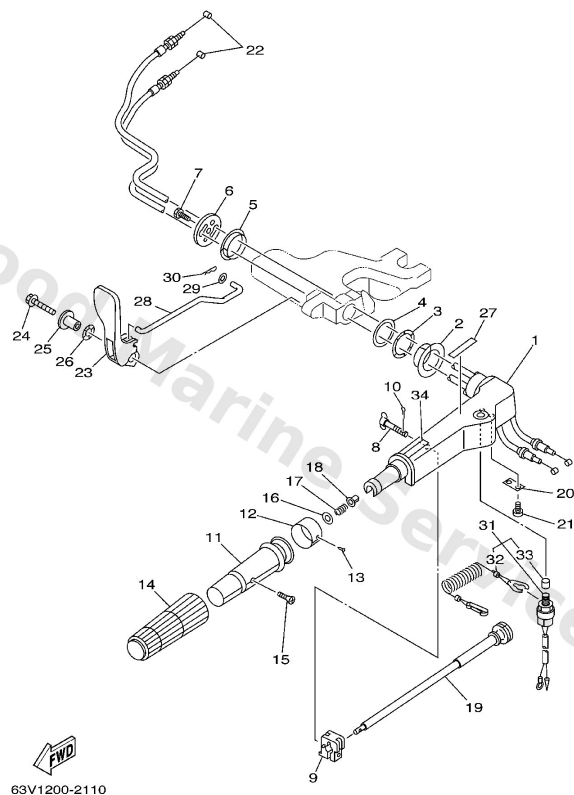
Ref	Part	
16	<a href="#">63V-15793-00</a> Screw	<a href="#">Buy now</a>
17	<a href="#">*</a> item_description	<a href="#">Buy now</a>
18	<a href="#">6G1-15755-00</a> Handle, starter	<a href="#">Buy now</a>
19	<a href="#">6G1-15779-00</a> Cover	<a href="#">Buy now</a>
20	<a href="#">63V-15794-00</a> Stopper	<a href="#">Buy now</a>
21	<a href="#">63V-15748-00</a> Plunger, starter stop	<a href="#">Buy now</a>
22	<a href="#">63V-15734-00</a> Spring, return	<a href="#">Buy now</a>
23	<a href="#">63V-15726-00</a> Washer, flat	<a href="#">Buy now</a>
24	<a href="#">91490-16018</a> Pin, cotter (e57)	<a href="#">Buy now</a>
25	<a href="#">63V-15762-00</a> Seal, rubber 2	<a href="#">Buy now</a>
26	<a href="#">97095-06020</a> Bolt(7u8)	<a href="#">Buy now</a>
27	<a href="#">92995-06600</a> Washer, plain (646)	<a href="#">Buy now</a>
28	<a href="#">6A1-83625-41</a> Mark 5 FOR CARIB	<a href="#">Buy now</a>

# Steering



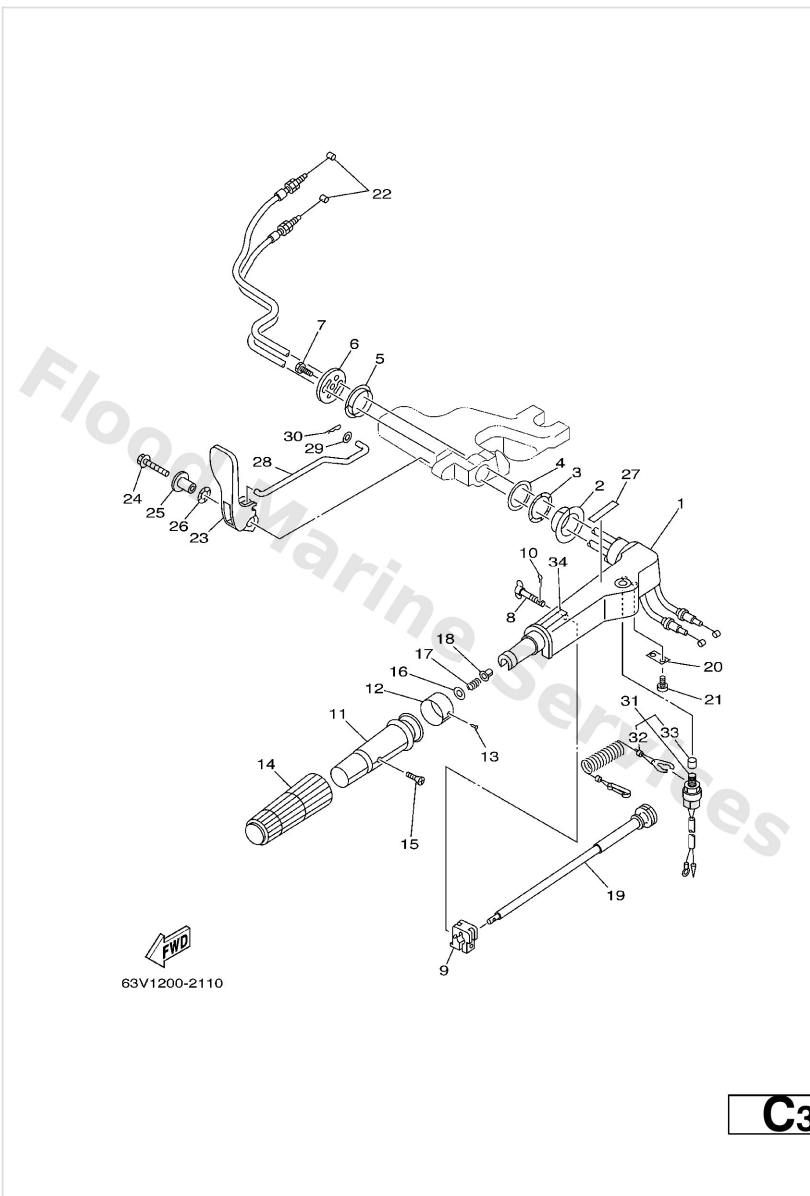
Ref	Part	
1	<a href="#">63V-42111-00-4D</a> Handle, steering	<a href="#">Buy now</a>
2	<a href="#">90386-34M97</a> Bush(63v)	<a href="#">Buy now</a>
3	<a href="#">90206-36M21</a> Washer, wave(63v)	<a href="#">Buy now</a>
4	<a href="#">90202-36M55</a> Washer, plate(63v)	<a href="#">Buy now</a>
5	<a href="#">90386-33M96</a> Bush(63v)	<a href="#">Buy now</a>
6	<a href="#">6G1-42131-01</a> Cover, handle steering	<a href="#">Buy now</a>
7	<a href="#">97095-06020</a> Bolt(7u8)	<a href="#">Buy now</a>
8	<a href="#">6G1-42125-01</a> Bolt, friction adjusting	<a href="#">Buy now</a>
9	<a href="#">6G1-42126-00</a> Piece, friction	<a href="#">Buy now</a>
10	<a href="#">91490-16010</a> Pin, cotter	<a href="#">Buy now</a>
11	<a href="#">664-42119-00</a> Grip, steering handle	<a href="#">Buy now</a>
12	<a href="#">697-42137-10</a> Indicator, throttle	<a href="#">Buy now</a>
12	<a href="#">6H2-42137-00</a> Indicator, throttle	<a href="#">Buy now</a>
13	<a href="#">90269-02M09</a> Rivet(6l5)	<a href="#">Buy now</a>
14	<a href="#">6G1-42177-00</a> Rubber, handle	<a href="#">Buy now</a>

# Steering



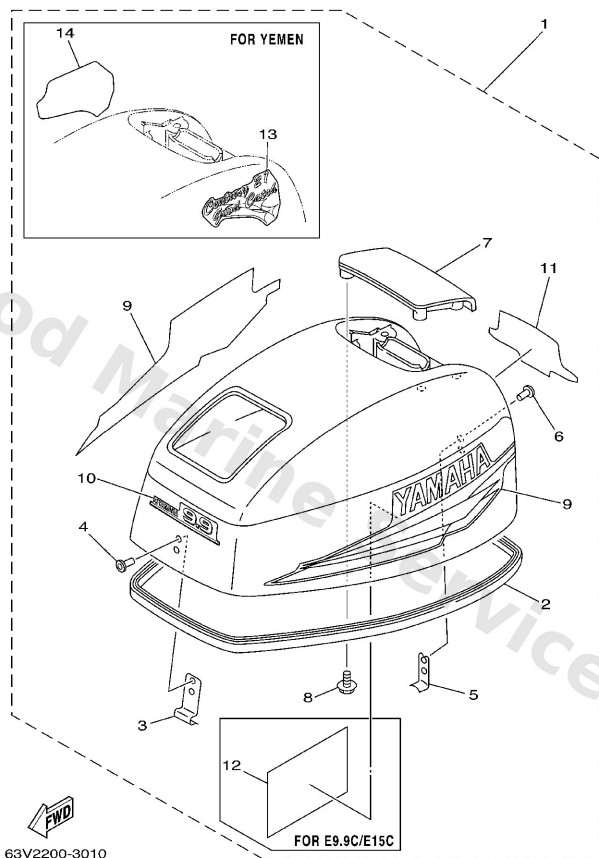
Ref	Part	
15	<a href="#">90149-05M13</a> Screw, countersunk	<a href="#">Buy now</a>
16	<a href="#">92903-10600</a> Washer, plate	<a href="#">Buy now</a>
17	<a href="#">90501-23215</a> Spring (655)	<a href="#">Buy now</a>
18	<a href="#">90386-08032</a> Bushing (650)	<a href="#">Buy now</a>
19	<a href="#">6G1-42138-01</a> Lever, throttle	<a href="#">Buy now</a>
20	<a href="#">6E0-42159-02</a> Stay	<a href="#">Buy now</a>
21	<a href="#">97885-05012</a> Screw,pan head (646)	<a href="#">Buy now</a>
22	<a href="#">6L2-26301-00</a> Throttle cable assembly	<a href="#">Buy now</a>
23	<a href="#">63V-44111-02</a> Handle, gear shift FOR FRONT SHIFT	<a href="#">Buy now</a>
24	<a href="#">90119-06M05</a> Bolt, with washer(6l2) FOR FRONT SHIFT	<a href="#">Buy now</a>
25	<a href="#">90387-06M86</a> Collar FOR FRONT SHIFT	<a href="#">Buy now</a>
26	<a href="#">90206-15M18</a> Washer, wave(6l2) FOR FRONT SHIFT	<a href="#">Buy now</a>
27	<a href="#">6E0-44191-11</a> Indicator, shift FOR FRONT SHIFT	<a href="#">Buy now</a>
28	<a href="#">63V-44124-02</a> Link, shift rod FOR FRONT SHIFT	<a href="#">Buy now</a>
29	<a href="#">90202-06009</a> Washer plate 626427510000 FOR FRONT SHIFT	<a href="#">Buy now</a>

# Steering



Ref	Part	
30	<a href="#">90468-18008</a> Clip 620436610000 <b>FOR FRONT SHIFT</b>	<a href="#">Buy now</a>
31	<a href="#">65W-82575-01</a> Engine stop switch assembly	<a href="#">Buy now</a>
32	<a href="#">682-82556-00</a> Lanyard, stop switch	<a href="#">Buy now</a>
33	<a href="#">689-8257Y-00</a> Cap	<a href="#">Buy now</a>
34	<a href="#">6E0-83627-41</a> Label, caution 7 <b>FOR CARIB</b>	<a href="#">Buy now</a>

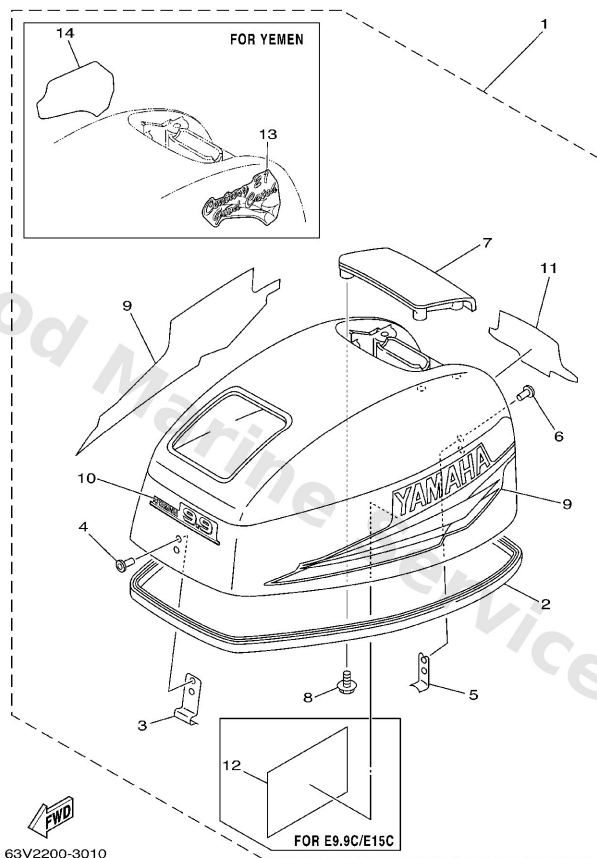
## Top Cowling



**A4**

Ref	Part	
2	<a href="#">63V-42615-00</a> Seal	<a href="#">Buy now</a>
3	<a href="#">6G1-42651-02</a> Hook	<a href="#">Buy now</a>
4	<a href="#">90266-04M04</a> Rivet(6e7)	<a href="#">Buy now</a>
5	<a href="#">6L2-42647-00</a> Holder, clamp band	<a href="#">Buy now</a>
8	<a href="#">97595-06516</a> Bolt, with washer(6r6)	<a href="#">Buy now</a>
9	<a href="#">63V-W0070-11</a> Graphic set	<a href="#">Buy now</a>
9	<a href="#">65E-W0070-H0</a> 1-	<a href="#">Buy now</a>
9	<a href="#">65F-W0070-H0</a> 1-	<a href="#">Buy now</a>
10	<a href="#">63V-42677-20</a> Graphic, rear	<a href="#">Buy now</a>
10	<a href="#">63W-42677-20</a> Graphic, front	<a href="#">Buy now</a>
10	<a href="#">677-42677-J0</a> Graphic, front	<a href="#">Buy now</a>
11	<a href="#">63V-42678-10</a> Graphic, rear	<a href="#">Buy now</a>
11	<a href="#">63W-42678-10</a> Graphic, front	<a href="#">Buy now</a>
11	<a href="#">65E-42678-H0</a> Graphic, Rear	<a href="#">Buy now</a>
11	<a href="#">65F-42678-H0</a> Graphic, Rear	<a href="#">Buy now</a>

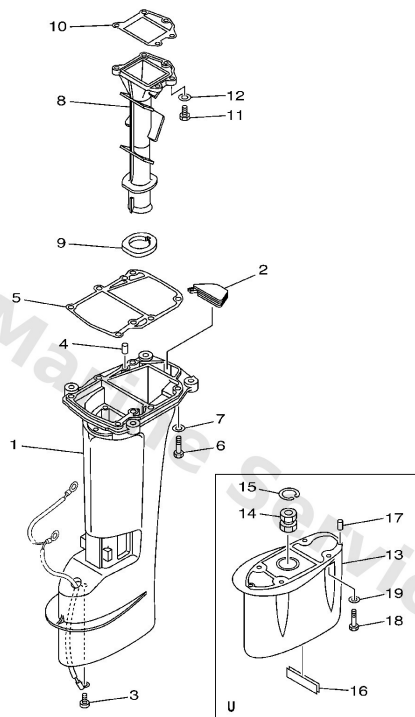
## Top Cowling



A4

Ref	Part	
12	<a href="#">677-13437-08</a> 1-	<a href="#">Buy now</a>
13	<a href="#">66T-42681-Y0</a> Mark, Cowling FOR YEMEN	<a href="#">Buy now</a>
14	<a href="#">66T-42682-Y0</a> Mark, Cowling FOR YEMEN	<a href="#">Buy now</a>

# Upper Casing

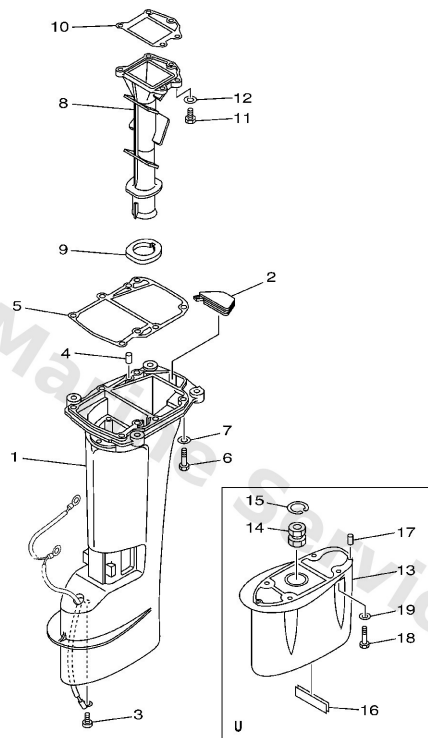


63V2200-3160

**D5**

Ref	Part	
1	<a href="#">63V-45111-04-4D</a> Casing, Upper S	<a href="#">Buy now</a>
1	<a href="#">63V-45111-14-4D</a> 16 – L/U	<a href="#">Buy now</a>
2	<a href="#">63V-45126-00</a> Plate, seal damper	<a href="#">Buy now</a>
3	<a href="#">90157-06M06</a> Screw, pan head(6m7)	<a href="#">Buy now</a>
4	<a href="#">93606-12019</a> Pin, dowel (614)	<a href="#">Buy now</a>
5	<a href="#">63V-45113-A1</a> Gasket, upper casing	<a href="#">Buy now</a>
6	<a href="#">97095-08030</a> Bolt, hexagon (fj1)	<a href="#">Buy now</a>
19	<a href="#">92995-08600</a> Washer, plain (663) U	<a href="#">Buy now</a>
8	<a href="#">65F-41131-00-5B</a> Manifold, ext. 1	<a href="#">Buy now</a>
9	<a href="#">63V-41135-00</a> Gasket, exhaust manifold	<a href="#">Buy now</a>
10	<a href="#">63V-41133-A1</a> Gasket, exhaust manifold 1	<a href="#">Buy now</a>
11	<a href="#">97095-06020</a> Bolt(7u8)	<a href="#">Buy now</a>
12	<a href="#">92995-06600</a> Washer, plain (646)	<a href="#">Buy now</a>
13	<a href="#">63V-45211-30-4D</a> 16 – U	<a href="#">Buy now</a>
14	<a href="#">682-45318-00</a> Bushing, drive shaft U	<a href="#">Buy now</a>

# Upper Casing



63V2200-3160

**D5**

Ref	Part	
15	<a href="#">93420-30042</a> Circlip (650) U	<a href="#">Buy now</a>
16	<a href="#">63V-45127-00</a> Seal U	<a href="#">Buy now</a>
17	<a href="#">93604-12M07</a> Pin, dowel (688) U	<a href="#">Buy now</a>
18	<a href="#">97075-08030</a> Bolt, hexagon (fj1) U	<a href="#">Buy now</a>

# Disclaimer

This document is provided for convenience only. It is **not** an official Yamaha publication and is **not supplied, endorsed, or approved** by Yamaha Motor Co., Ltd.

Reasonable efforts are made to keep information accurate; however diagrams, part references, supersessions, descriptions, and applicability may contain errors or omissions. Specifications and part availability may change without notice.

You are responsible for confirming the correct parts for your engine (including model code, year, serial range, and any superseded part numbers) before ordering or fitting.