



Yamaha 20CMH 1992

Parts Manual

www.floodmarine.co.uk

+44 2882 246 539

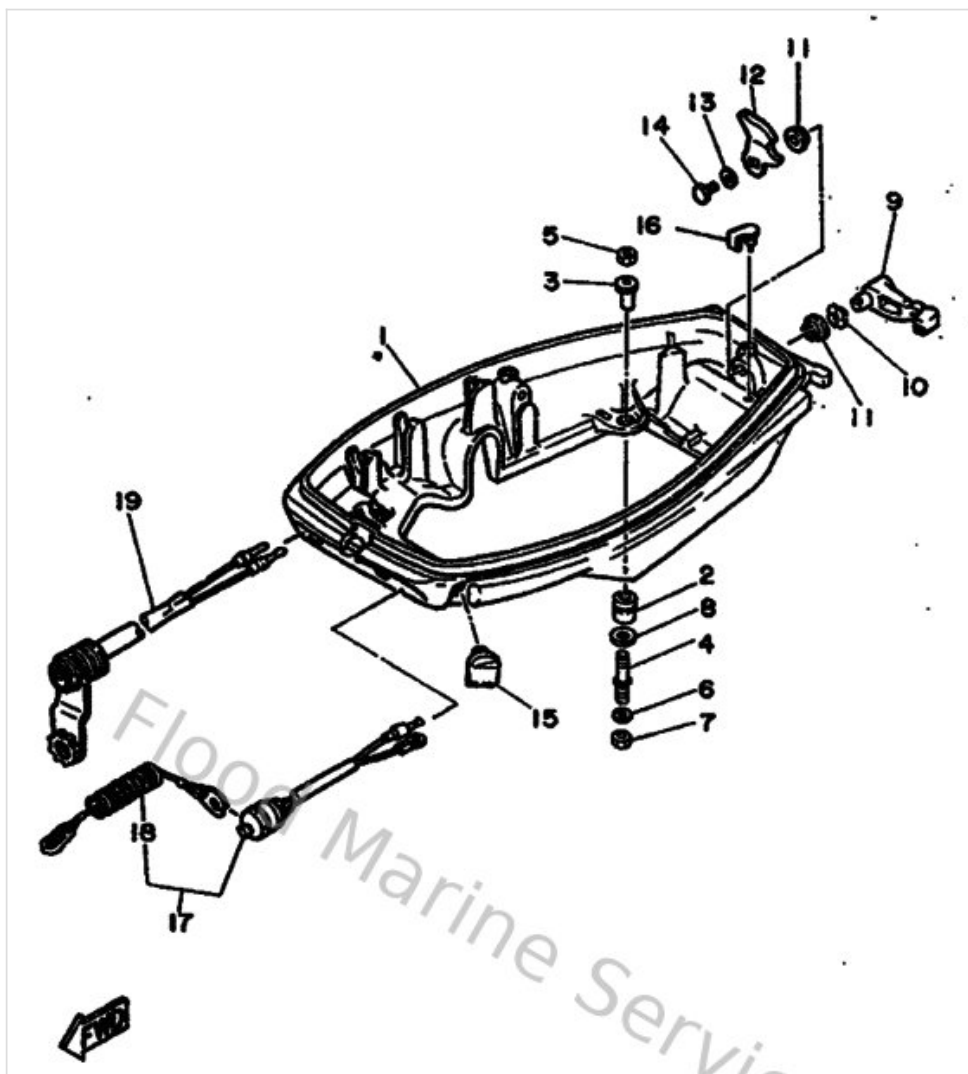
Authorised Yamaha Dealers



Contents

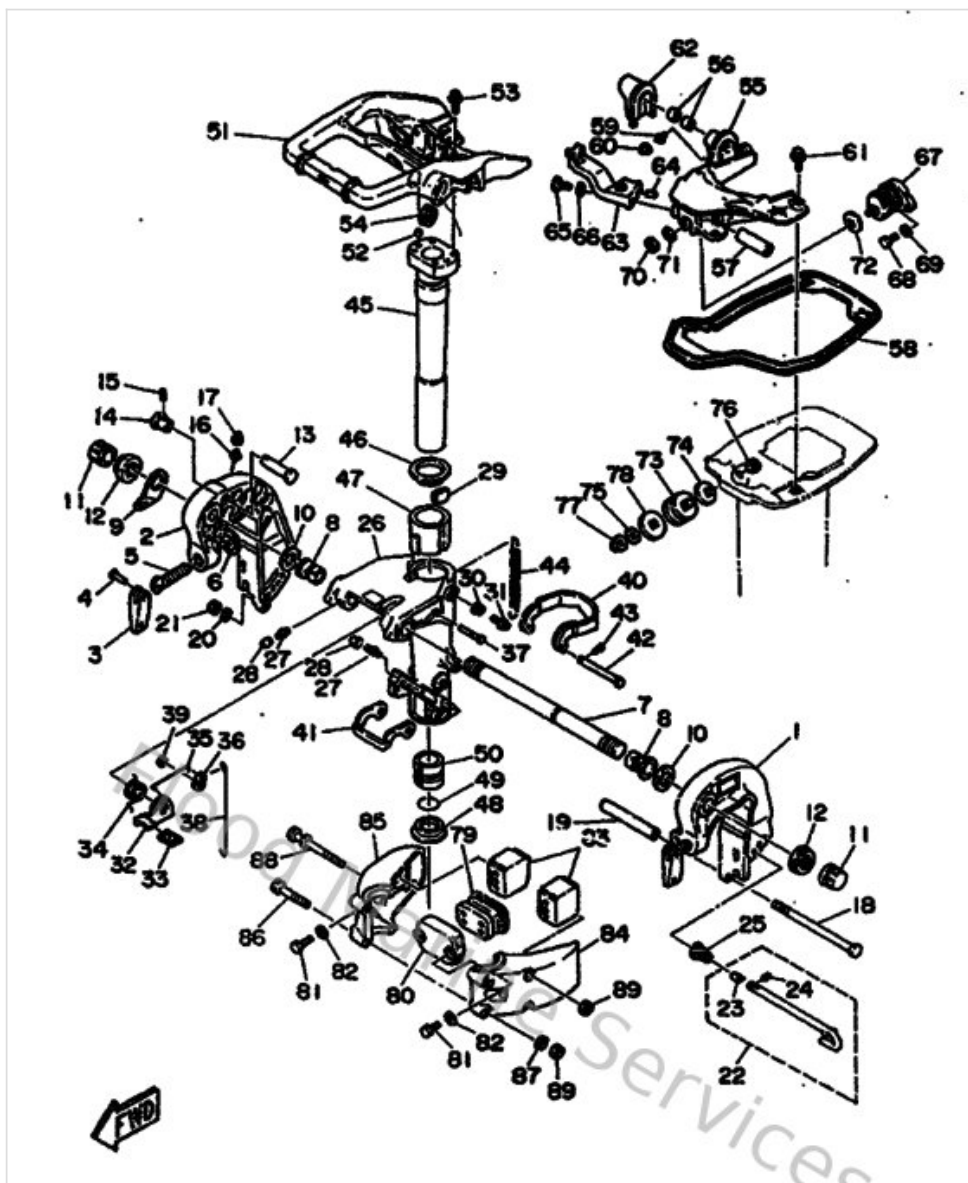
| | |
|-----------------------------------|----|
| Bottom Cowling | 3 |
| Bracket | 4 |
| Control | 9 |
| Crankshaft & Piston | 12 |
| Cylinder & Crankcase | 14 |
| Electrical | 16 |
| Fuel | 18 |
| Intake | 21 |
| Lower Casing & Drive 1 | 25 |
| Lower Casing & Drive 2 | 29 |
| Magneto | 31 |
| Optional Parts 1 | 33 |
| Optional Parts 2 | 34 |
| Repair Kit 1 | 36 |
| Repair Kit 2 | 38 |
| Starter | 40 |
| Steering | 43 |
| Top Cowling | 45 |
| Upper Casing | 46 |

Bottom Cowling



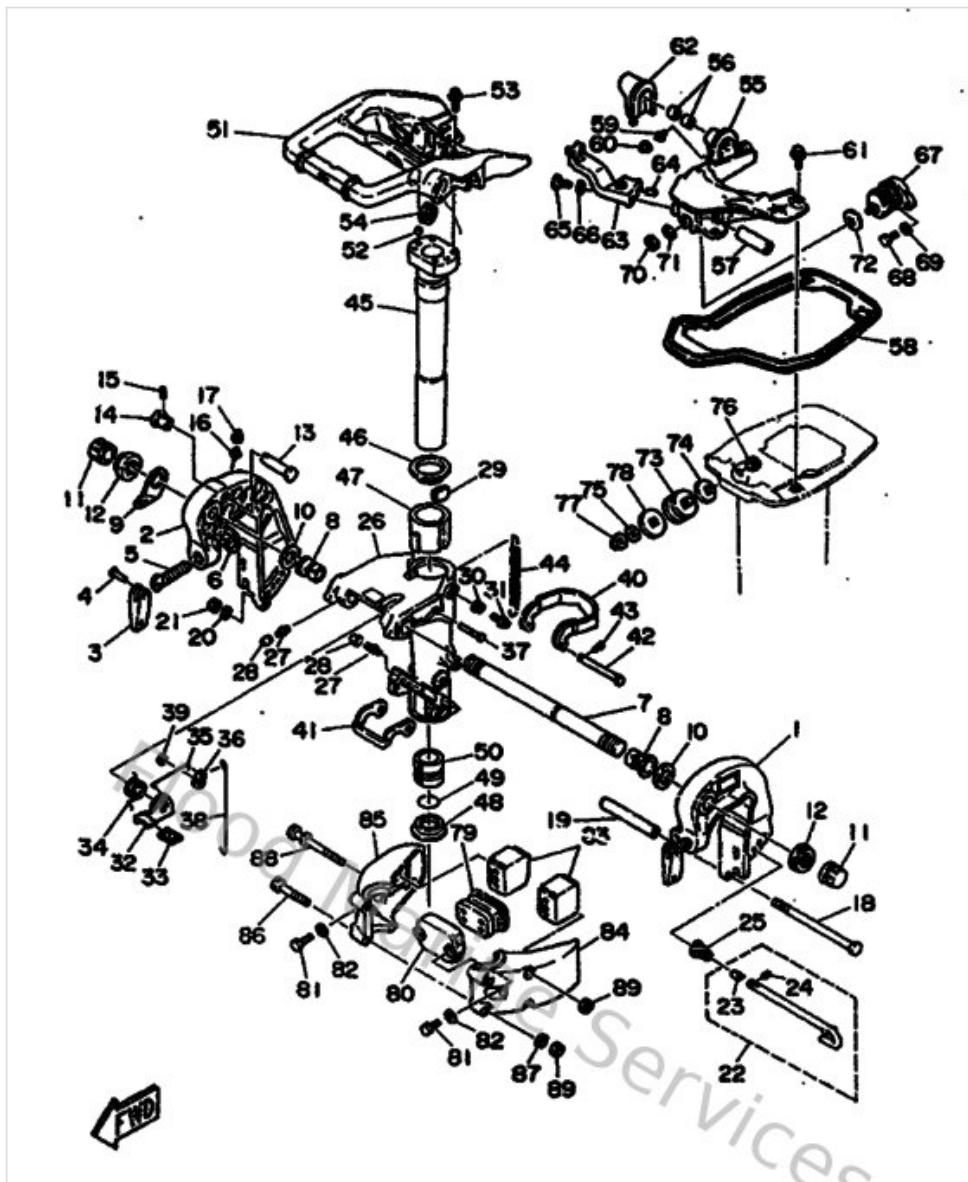
| Ref | Part | |
|-----|---|-------------------------|
| 2 | 9048015M0600 Grommet (689) | Buy now |
| 3 | 9038708M2500 Collar (689) | Buy now |
| 4 | 6G0427960000 Bolt 1 | Buy now |
| 5 | 953800870000 Nut(661) | Buy now |
| 6 | 929900860000 Washer, plain (663) | Buy now |
| 8 | 9020108M8700 Washer (6g0) | Buy now |
| 9 | 689428150000 Lever, clamp 1 | Buy now |
| 10 | 902061205200 Washer, wave (666) | Buy now |
| 11 | 903861206900 Bush(666) | Buy now |
| 13 | 9020106M0200 Washer,plate (6k8) | Buy now |
| 14 | 973130601000 Bolt | Buy now |
| 15 | 689427250000 Grommet | Buy now |
| 17 | 689825750200 Engine stop switch assembly | Buy now |
| 18 | 682825560000 Lanyard, stop switch | Buy now |
| 19 | 682843810000 2p concent 1 | Buy now |

Bracket



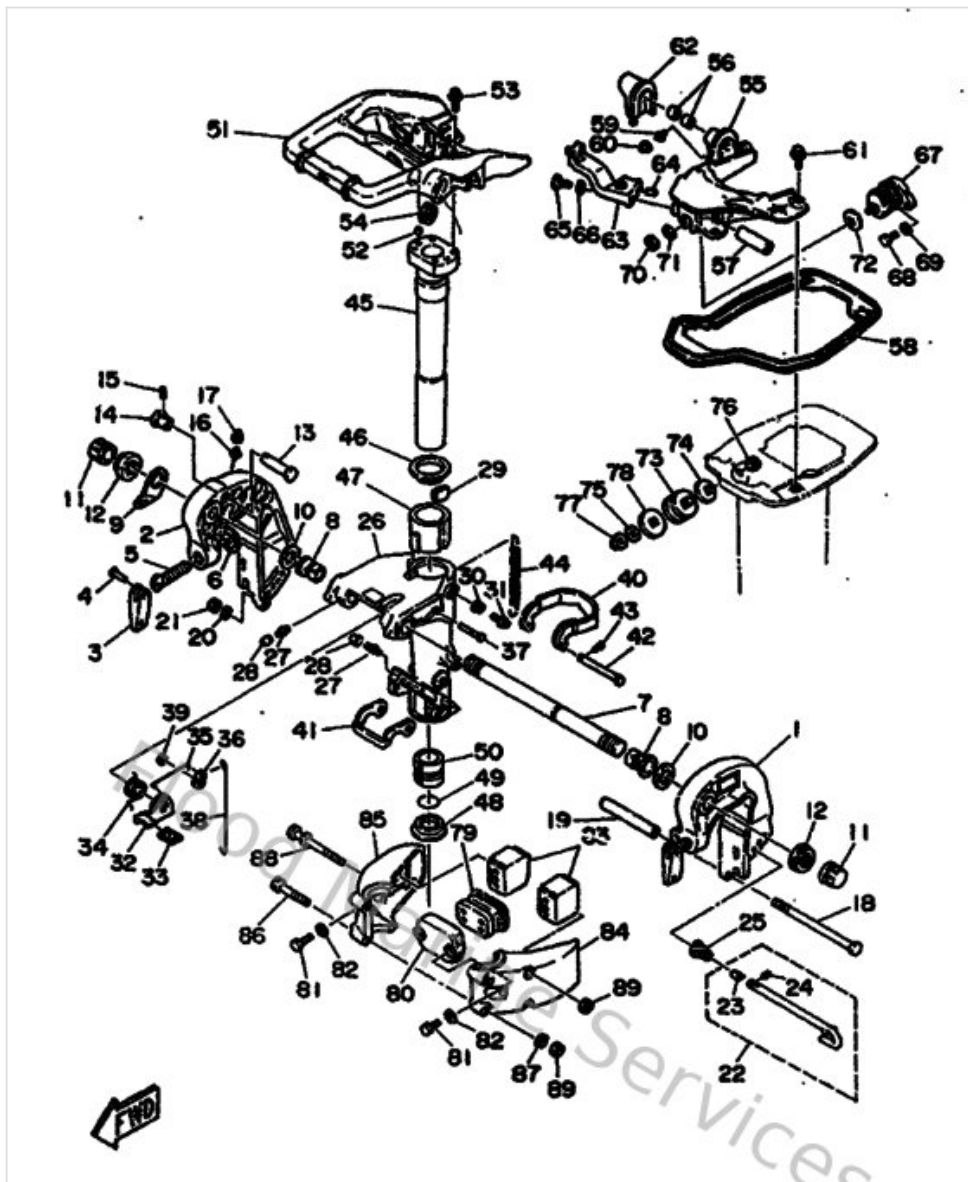
| Ref | Part | |
|-----|---|-------------------------|
| 3 | 61643118001D Handle, transom clamp | Buy now |
| 5 | 901491403000 Screw, transom clamp | Buy now |
| 6 | 648431140100 Pad, transom clamp | Buy now |
| 8 | 9038622M6700 Bush(6a9) | Buy now |
| 9 | 6J8431130100 Plate, clamp bracket | Buy now |
| 10 | 902012242800 Washer, plate(64j) | Buy now |
| 12 | 901852204300 Nut, self-locking | Buy now |
| 13 | 689431910000 Shaft, stopper | Buy now |
| 14 | 689431920100 Knob, stopper | Buy now |
| 15 | 916903001600 Pin, spring | Buy now |
| 16 | 937000600400 Nipple, grease(6a1) | Buy now |
| 17 | 663451190000 Cap, grease nipple | Buy now |
| 18 | 901010833900 Bolt, hexagon (656) | Buy now |
| 19 | 903870901900 Collar | Buy now |
| 20 | 929900860000 Washer, plain (663) | Buy now |

Bracket



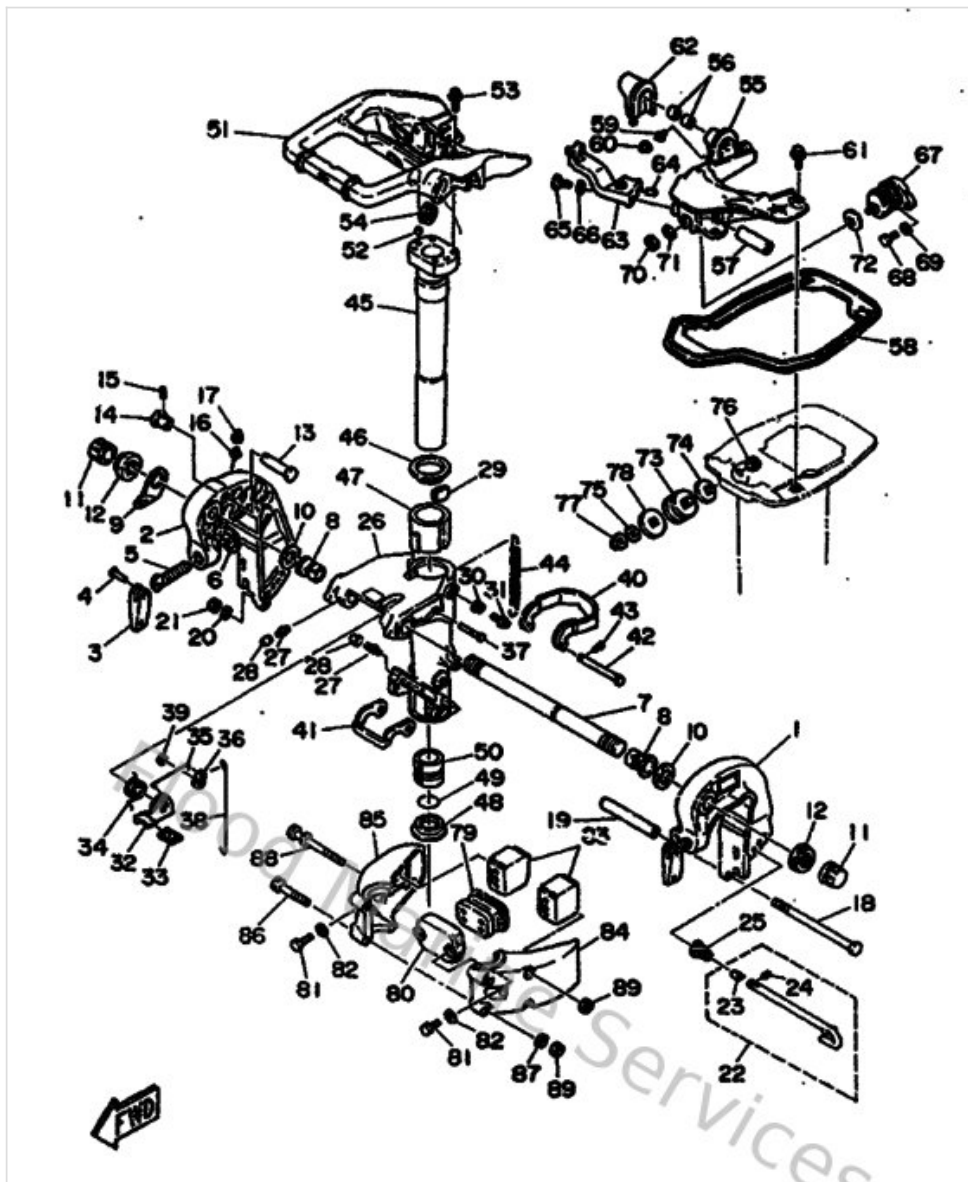
| Ref | Part | |
|-----|--|-------------------------|
| 21 | 953800860000 Nut (661) | Buy now |
| 22 | 689431600000 Tilt rod assembly | Buy now |
| 23 | 656431650100 Plate, tilt lock | Buy now |
| 24 | 916903000800 Pin. spring(656) | Buy now |
| 25 | 9050210M0700 Spring, conical(6k3) | Buy now |
| 27 | 9370006M0300 Nipple, grease(6a1) | Buy now |
| 29 | 648425280000 Plate, friction | Buy now |
| 30 | 689433730100 Seal, damper | Buy now |
| 31 | 9010506M1800 Bolt (689) | Buy now |
| 32 | 689436311000 Lever, tilt | Buy now |
| 33 | 689436330000 Cover, tilt lever | Buy now |
| 34 | 689436430000 Spring, torsion | Buy now |
| 35 | 689436160000 Rod, tilt lock 1 | Buy now |
| 36 | 648436420000 Lever,tilt 2 | Buy now |
| 37 | 9024906M2200 Pin(6a9) | Buy now |

Bracket



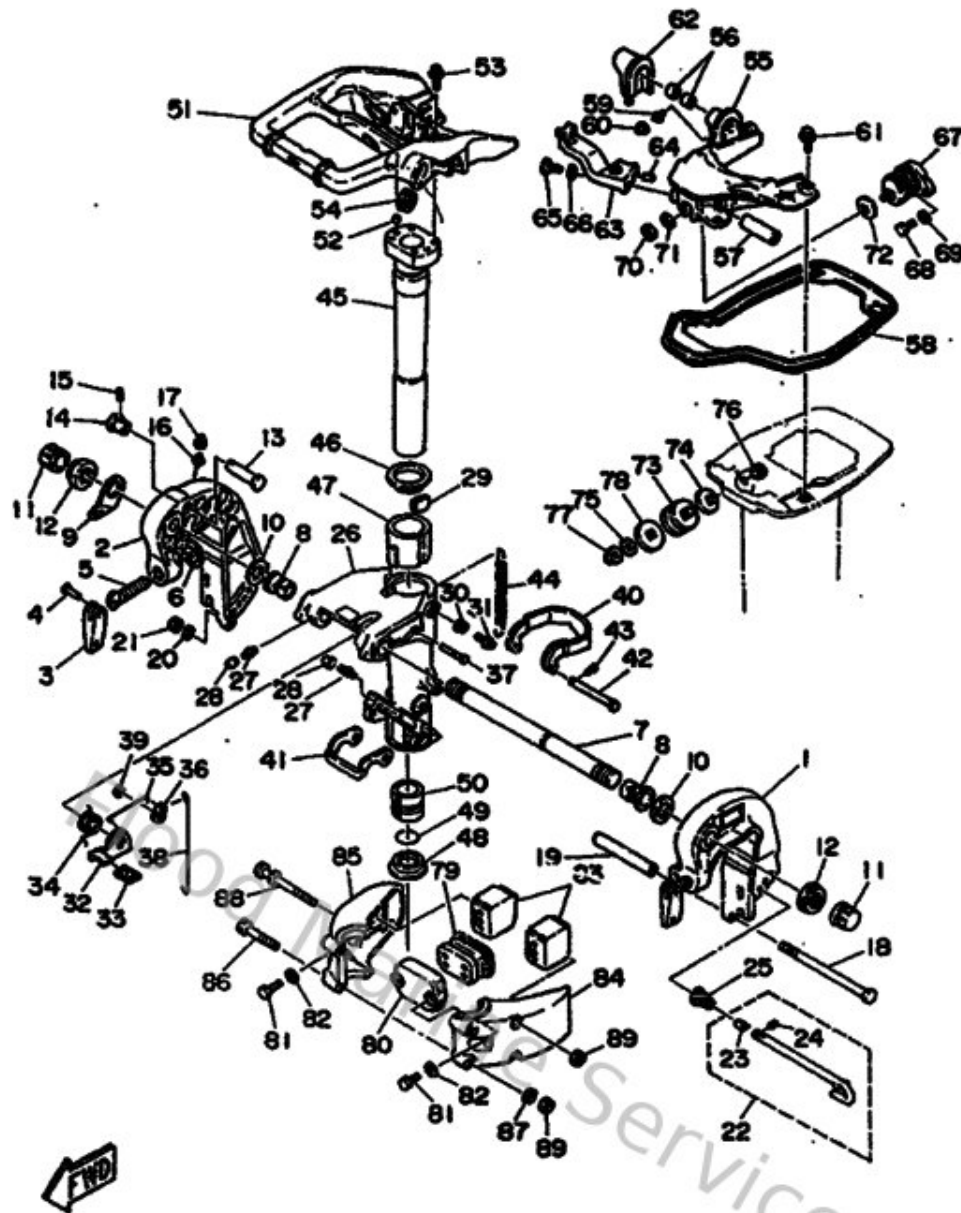
| Ref | Part | |
|-----|---|-------------------------|
| 38 | 990800560000 Circlip(22k) | Buy now |
| 40 | 689436140000 Plate, tilt lock | Buy now |
| 41 | 648436150000 Plate, tilt lock 2 | Buy now |
| 42 | 902400504600 Pin With Hole (656) | Buy now |
| 44 | 9050630M2700 Spring, tension(6a4) | Buy now |
| 45 | 689425210094 Shaft, steering pivot | Buy now |
| 46 | 902094701600 Washer 648425350000 | Buy now |
| 47 | 9038647M2200 Bushing (695) | Buy now |
| 48 | 903863802200 Bush(648-42539-00) | Buy now |
| 49 | 932103716000 O-ring (6g8) | Buy now |
| 50 | 903863809000 Bushing (664) | Buy now |
| 51 | 68942511011D Bracket, Steering | Buy now |
| 52 | 936081206300 Pin, dowel (626) | Buy now |
| 53 | 9010506M0700 Bolt (689) | Buy now |
| 54 | 904802904500 Grommet 648425510000 | Buy now |

Bracket



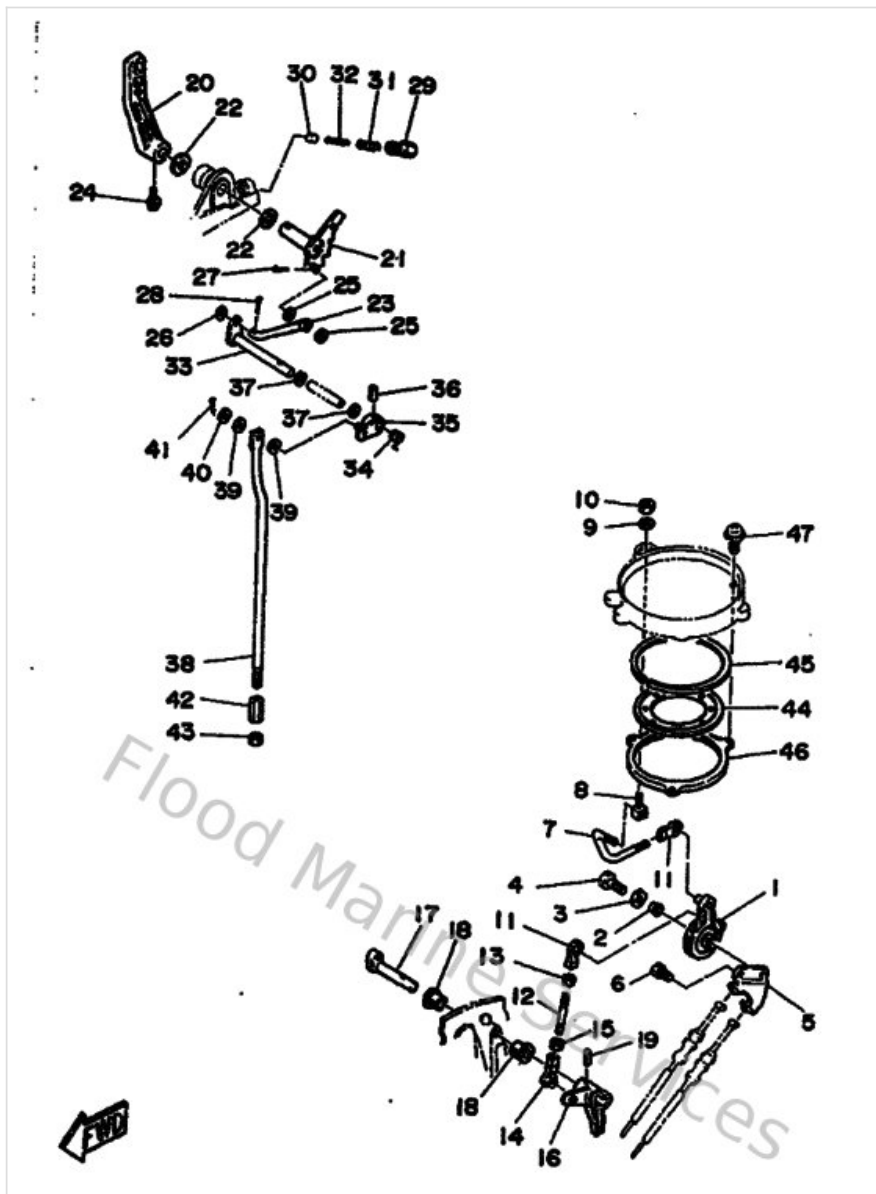
| Ref | Part | |
|-----|--|-------------------------|
| 56 | 903801201200 Bush Solid 648441220000 | Buy now |
| 57 | 9038710M3900 Coller (689) | Buy now |
| 58 | 689427160000 Rubber, Seal 1 | Buy now |
| 61 | 9010506M0800 Bolt (689) | Buy now |
| 62 | 689427180000 Rubber, seal 3 | Buy now |
| 63 | 648445190000 Bracket | Buy now |
| 64 | 936061201900 Pin, dowel (614) | Buy now |
| 65 | 973950601800 Bolt (fj0) | Buy now |
| 66 | 929900660000 Washer, plain (646) | Buy now |
| 67 | 689445160000 Mount damper, upper front | Buy now |
| 68 | 970800602000 Bolt(7u8) | Buy now |
| 70 | 953801060000 Nut(624) | Buy now |
| 71 | 929901020000 958-69527-00 washer, plain | Buy now |
| 72 | 64844591A000 Gasket | Buy now |
| 73 | 664445140000 Mount damper, upper side | Buy now |

Bracket



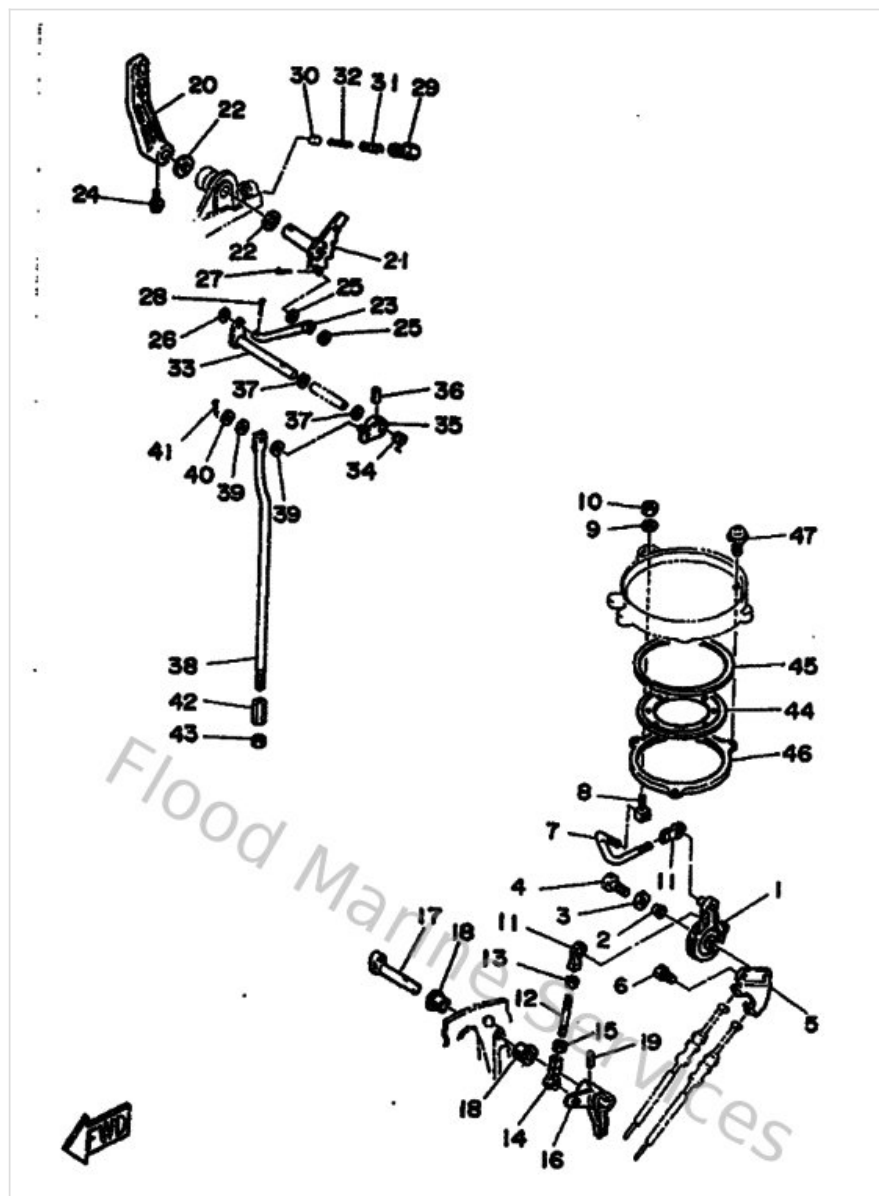
| Ref | Part | |
|-----|---|-------------------------|
| 77 | 953801080000 Nut, crown (650) | Buy now |
| 78 | 66444591A000 Gasket | Buy now |
| 79 | 689445570000 Mount damper, lower front | Buy now |
| 80 | 689445530000 Cover, lower mount | Buy now |
| 81 | 973950802500 Bolt (62g) | Buy now |
| 83 | 689445550000 Mount damper, lower side | Buy now |
| 86 | 970800806500 Bolt (gk02) | Buy now |
| 88 | 9011908M0300 Bolt (689) | Buy now |

Control



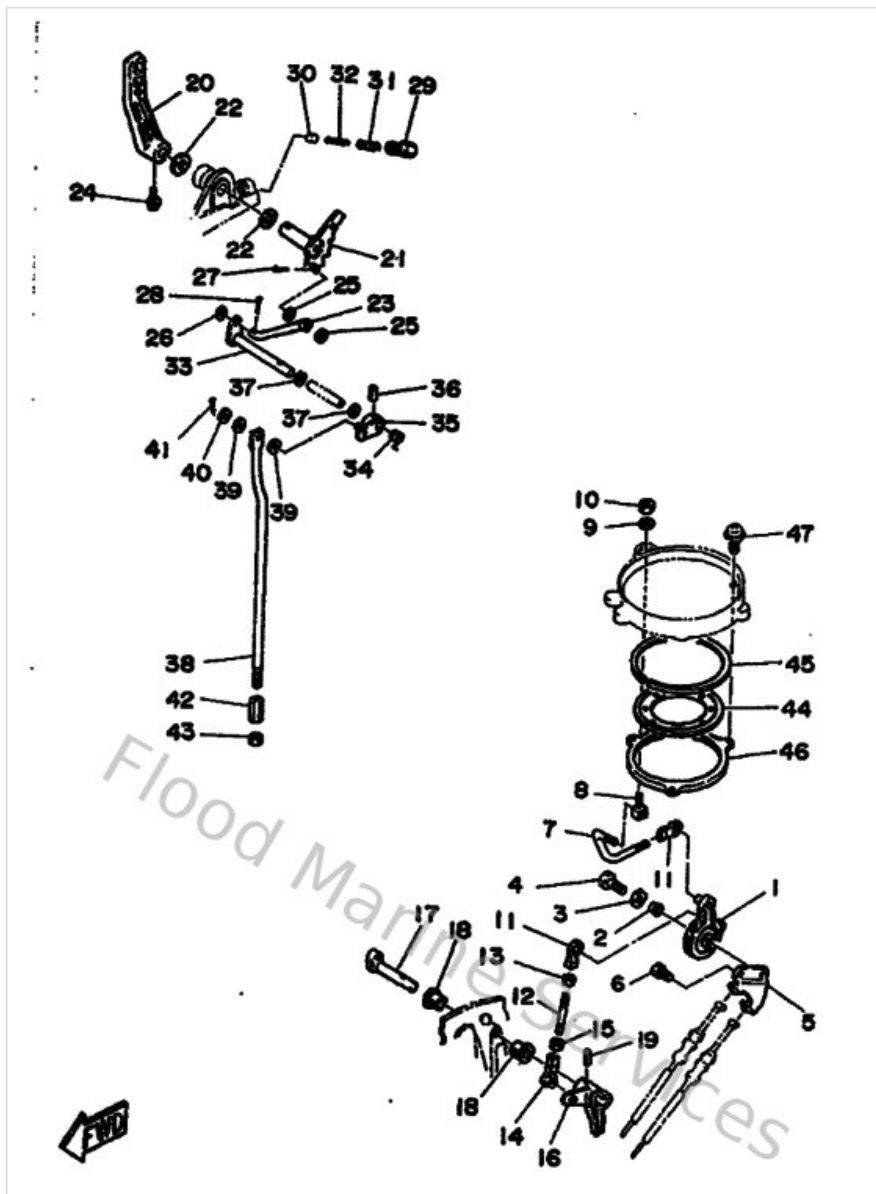
| Ref | Part | |
|-----|---|-------------------------|
| 1 | 664416310094 Lever, magneto control | Buy now |
| 2 | 9038706M0200 Collar (664) | Buy now |
| 4 | 973130602500 Bolt | Buy now |
| 5 | 664144970000 Stay Throttle Wire | Buy now |
| 6 | 970800601200 Bolt(gh1) | Buy now |
| 7 | 664416360000 Rod, Magneto Control | Buy now |
| 8 | 648416350000 Shaft, Link Connecting | Buy now |
| 9 | 902010555600 Washer plate (664) | Buy now |
| 10 | 953800560000 Nut, hexagon (663) | Buy now |
| 14 | 6H1412370000 Joint, link | Buy now |
| 16 | 6A9421540094 Lever Throttle Control | Buy now |
| 17 | 656421530094 Shaft, throttle control | Buy now |
| 18 | 903861000900 Bushing 6484418600 | Buy now |
| 19 | 916904001800 Pin spring(664) | Buy now |
| 21 | 664441130100 Cam plate, handle | Buy now |

Control



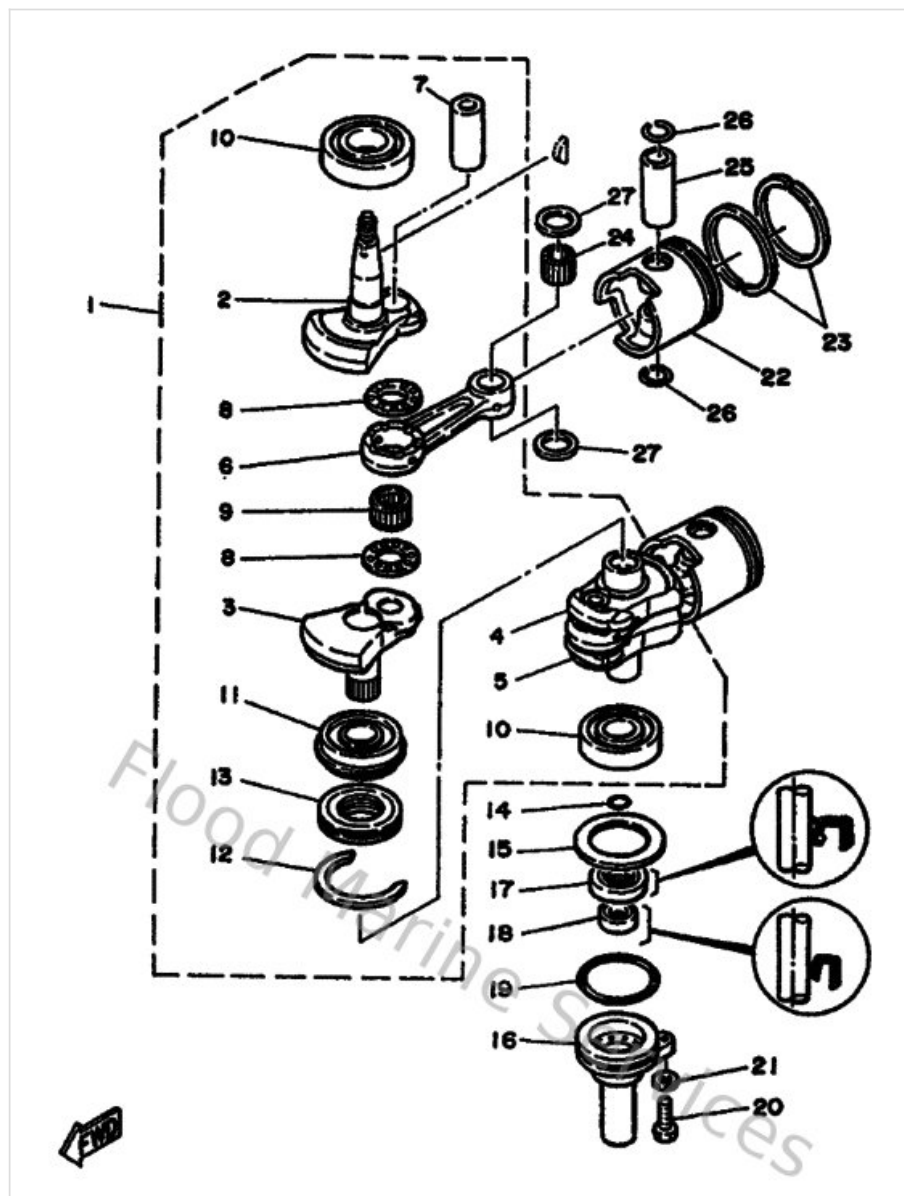
| Ref | Part | |
|-----|---|-------------------------|
| 22 | 902021203100 Washer, plate 6484412600 | Buy now |
| 23 | 664441420000 Joint | Buy now |
| 24 | 9010506M0700 Bolt (689) | Buy now |
| 25 | 902020600700 Washer plate 626441880000 | Buy now |
| 26 | 929900560000 Washer, plain (646) | Buy now |
| 27 | 914901601000 Pin, cotter | Buy now |
| 28 | 914901201000 Pin, cotter (6g8) | Buy now |
| 29 | 664427150000 Bushing 2 | Buy now |
| 30 | 664441670000 Plunger, shift cam | Buy now |
| 31 | 9050114M0700 Spring, compresion (664) | Buy now |
| 32 | 9050109M0800 Spring, compresion (664) | Buy now |
| 33 | 689441210100 Lever, shift rod 1 | Buy now |
| 34 | 9050814M1300 Spring (689) | Buy now |
| 35 | 689441250000 Lever, shift rod 2 | Buy now |
| 36 | 916904001600 Pin, spring (648) | Buy now |

Control



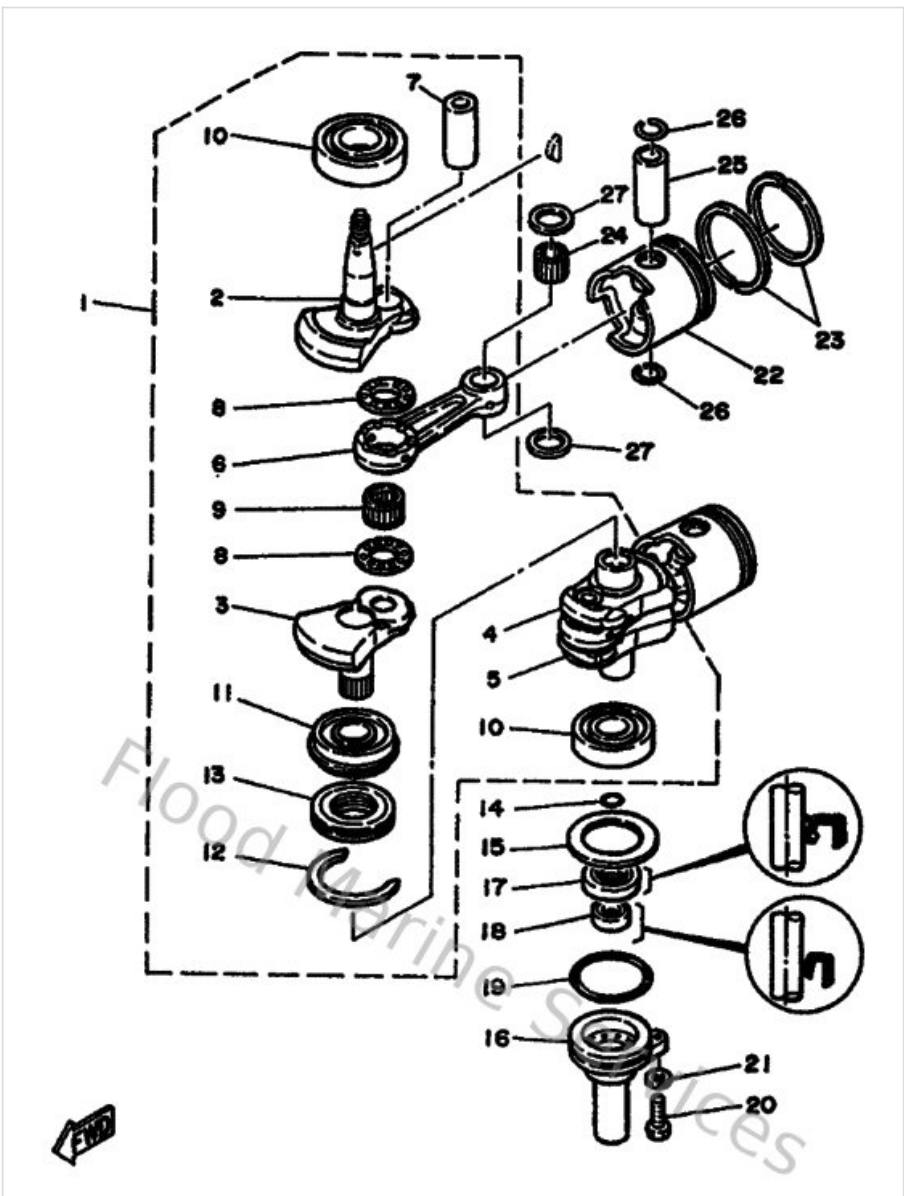
| Ref | Part | |
|-----|---|-------------------------|
| 37 | 902021002400 Washer plate 648441880000 | Buy now |
| 38 | 6G0441430000 Rod, shift | Buy now |
| 41 | 914902001000 Pin, cotter | Buy now |
| 42 | 648441460000 Connector, shift rod 2 | Buy now |
| 43 | 901700702100 Nut hexagon 648441280000 | Buy now |
| 44 | 695416120000 Retainer, Magneto Base | Buy now |
| 45 | 695416130000 Plate, base friction | Buy now |
| 46 | 695416110094 Retainer, Magneto Base | Buy now |
| 47 | 979850521000 Screw, With Washer | Buy now |

Crankshaft & Piston



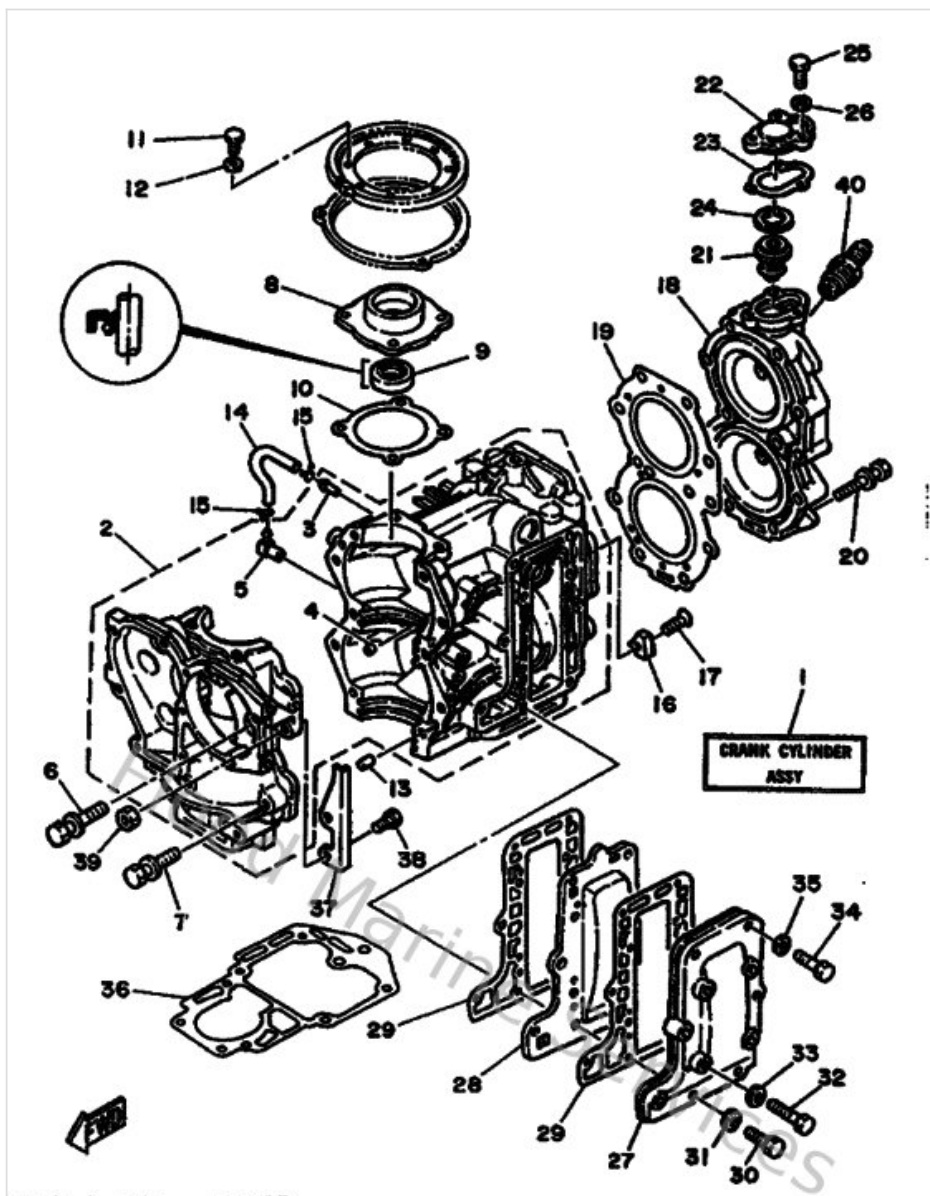
| Ref | Part | |
|-----|--|-------------------------|
| 1 | 695114000000 Crankshaft Assembly | Buy now |
| 2 | 6G0114121000 Crank 1 | Buy now |
| 3 | 6G0114220000 Crank 2 | Buy now |
| 4 | 6G0114320000 Crank 3 | Buy now |
| 6 | 648116510300 Connecting rod kit | Buy now |
| 7 | 648116810000 Pin,crank | Buy now |
| 8 | 902092224800 Washer (29l) | Buy now |
| 9 | 93310522W000 Bearing, needle (6g0) | Buy now |
| 10 | 93306305U300 Bearing(6j8) | Buy now |
| 11 | 933900000900 Brg,cyl-cal roller 260g nt | Buy now |
| 12 | 934406205700 Cir clip (656) | Buy now |
| 13 | 656115150000 Seal, Labyrinth 1 | Buy now |
| 14 | 932101627500 O-ring | Buy now |
| 15 | 902015030600 Washer plate 648115870000 | Buy now |
| 16 | 6891539601CA Housing, oil seal | Buy now |

Crankshaft & Piston



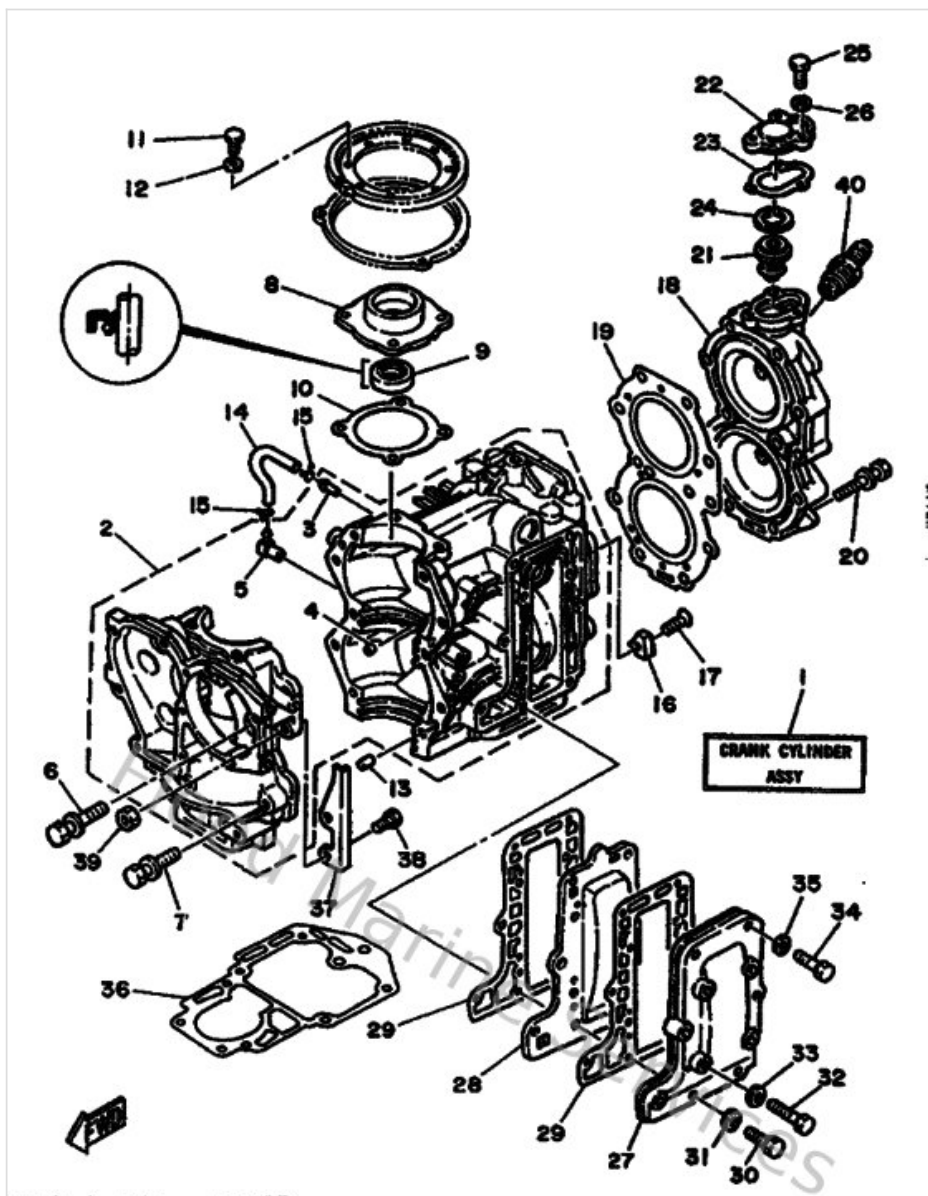
| Ref | Part | |
|-----|---|-------------------------|
| 17 | 9310125M3500 Oil seal(6a4) | Buy now |
| 18 | 9310116M3600 Oil seal(6a8) | Buy now |
| 19 | 9321057M0900 O-ring (683) | Buy now |
| 20 | 973950602200 Bolt(61k) | Buy now |
| 21 | 929900660000 Washer, plain (646) | Buy now |
| 22 | 664116368000 Piston (2Nd O.s) | Buy now |
| 23 | 664116108000 Piston ring set (std) | Buy now |
| 24 | 9360220M0200 Pin, dowel b (664) | Buy now |
| 25 | 648116330000 Pin,piston | Buy now |
| 26 | 934502002600 Clip 6041163400 | Buy now |
| 27 | 902011852200 Washer (656) | Buy now |

Cylinder & Crankcase



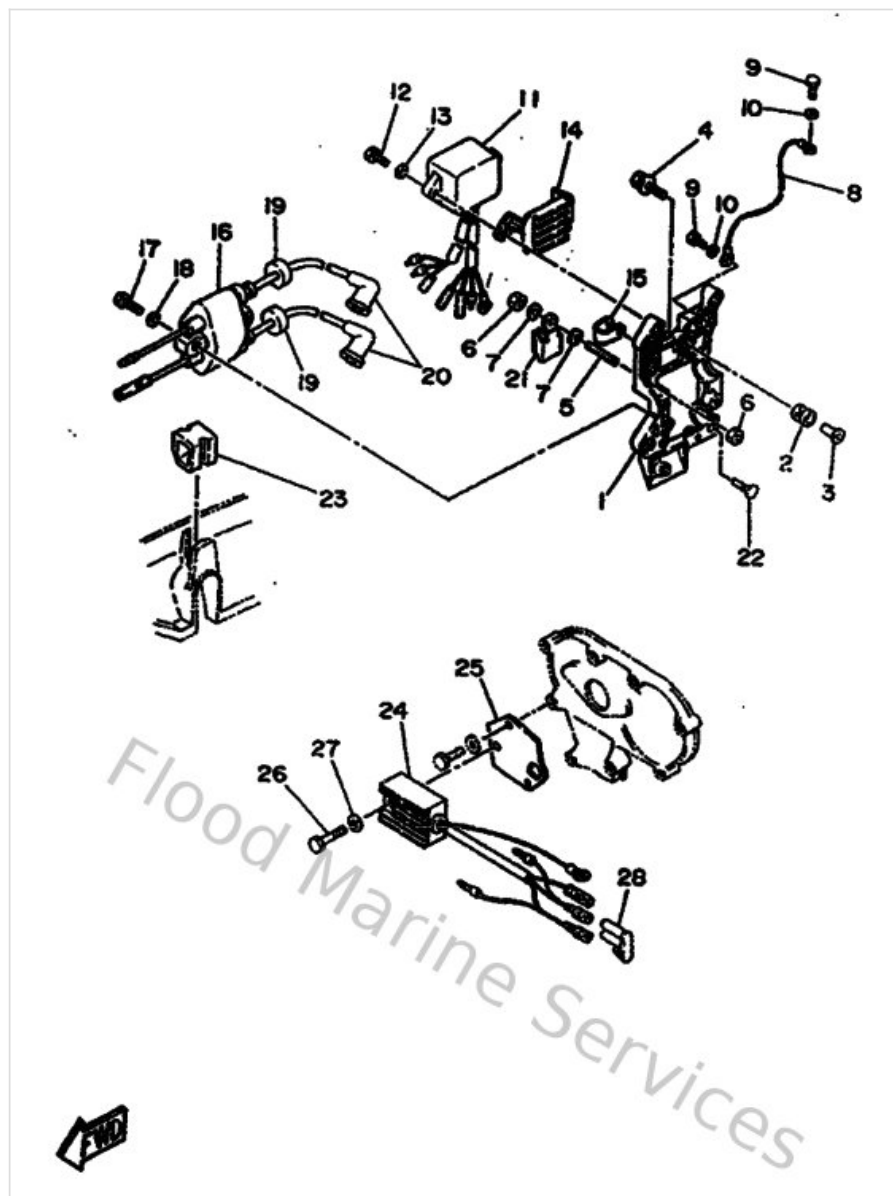
| Ref | Part | |
|-----|--|-------------------------|
| 3 | 624144850000 Pipe, joint | Buy now |
| 4 | 624113790000 Valve, check | Buy now |
| 5 | 650113700000 Check valve assembly | Buy now |
| 6 | 9011908M1800 Bolt, with washer | Buy now |
| 7 | 9011908M6600 Bolt, with washer | Buy now |
| 9 | 664153590194 Housing, Oil Seal | Buy now |
| 10 | 66415369A000 Gasket, oil seal housing | Buy now |
| 11 | 973130602000 Bolt(7u8) | Buy now |
| 12 | 929900660000 Washer, plain (646) | Buy now |
| 13 | 936061201900 Pin, dowel (614) | Buy now |
| 14 | 904450726000 Hose (I390) | Buy now |
| 15 | 904670601600 Clip (655) | Buy now |
| 16 | 689113250000 Anode | Buy now |
| 17 | 987800602000 Screw flat head | Buy now |
| 19 | 69511181A100 Gasket, cylinder head 1 | Buy now |

Cylinder & Crankcase



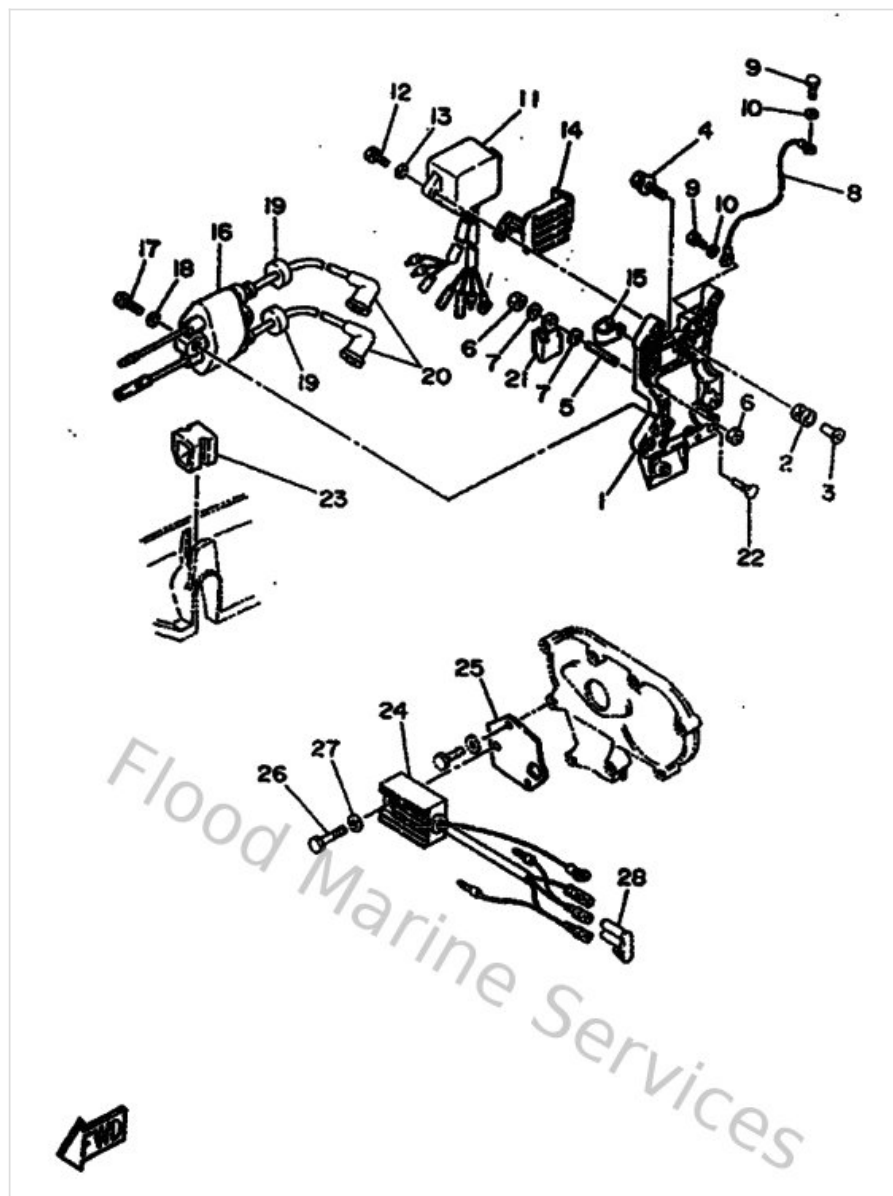
| Ref | Part | |
|-----|---|-------------------------|
| 21 | 6F5124110200 Thermostat | Buy now |
| 22 | 65512413011S Cover, thermostat | Buy now |
| 23 | 65512414A100 Gasket, cover | Buy now |
| 24 | 902012156700 Washer, plate (650) | Buy now |
| 27 | 66441113001S Outer cover, exhaust | Buy now |
| 28 | 664411140000 Gasket, exhaust outer cover | Buy now |
| 29 | 66441114A000 Gasket, exhaust outer cover | Buy now |
| 30 | 973950602500 Bolt | Buy now |
| 32 | 973950603000 Bolt(jf7) | Buy now |
| 36 | 68945113A100 Gasket, upper casing | Buy now |
| 37 | 695416160000 Stopper, Magneto Base | Buy now |
| 39 | 953030660000 Nut(661) | Buy now |
| 40 | 947020027200 Plug, spark (br7hs) | Buy now |

Electrical



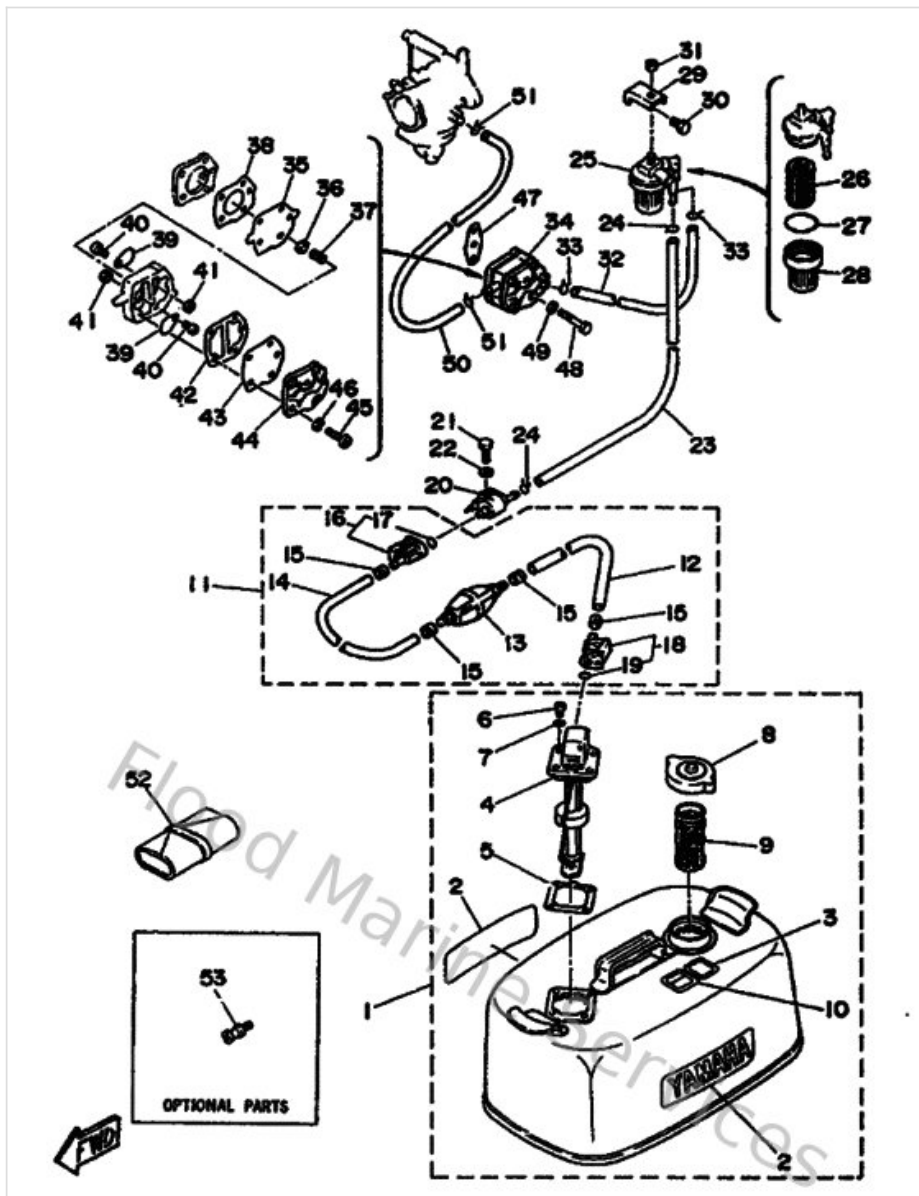
| Ref | Part | |
|-----|--|-------------------------|
| 1 | 695855420094 Bracket | Buy now |
| 2 | 6A0823170000 Damper, ignition coil | Buy now |
| 3 | 624425420000 Collar | Buy now |
| 4 | 9011906M8800 Bolt, with washer | Buy now |
| 5 | 9011606M0700 Bolt, stud (688) | Buy now |
| 6 | 953030660000 Nut(661) | Buy now |
| 7 | 929950610000 Washer(6a1) | Buy now |
| 8 | 689825190000 Wire Earth Lead | Buy now |
| 9 | 970130601200 Bolt(gh1) | Buy now |
| 10 | 929900610000 Washer(6a1) | Buy now |
| 11 | 695855401200 C.d.i. unit assembly | Buy now |
| 12 | 9010106M2700 Bolt | Buy now |
| 13 | 929900660000 Washer, plain (646) | Buy now |
| 14 | 689855480100 Holder | Buy now |
| 16 | 6E7855701900 Ignition coil assembly | Buy now |

Electrical



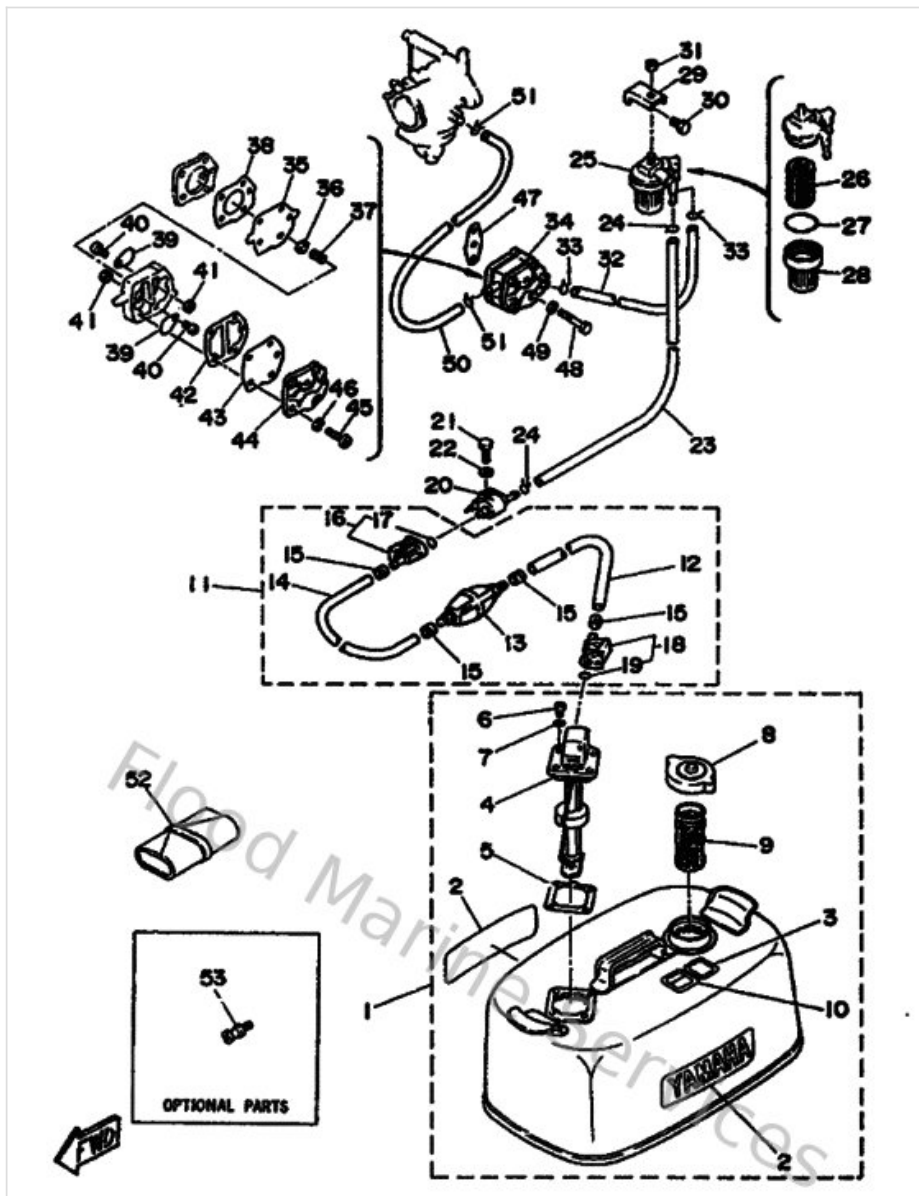
| Ref | Part | |
|-----|--|-------------------------|
| 19 | 904802516100 Grommet(656) | Buy now |
| 20 | 6G1823702100 Plug cap assembly | Buy now |
| 21 | 9046508M1300 Clamp (695) | Buy now |
| 22 | 689855470000 Damper | Buy now |
| 23 | 9048017M0800 Grommet (689) | Buy now |
| 24 | 6J8819600000 Rectifier & regulator assembly | Buy now |
| 26 | 973950601600 Bolt, hexagon deep recess | Buy now |
| 28 | 6E5825820000 Cap 1 | Buy now |

Fuel



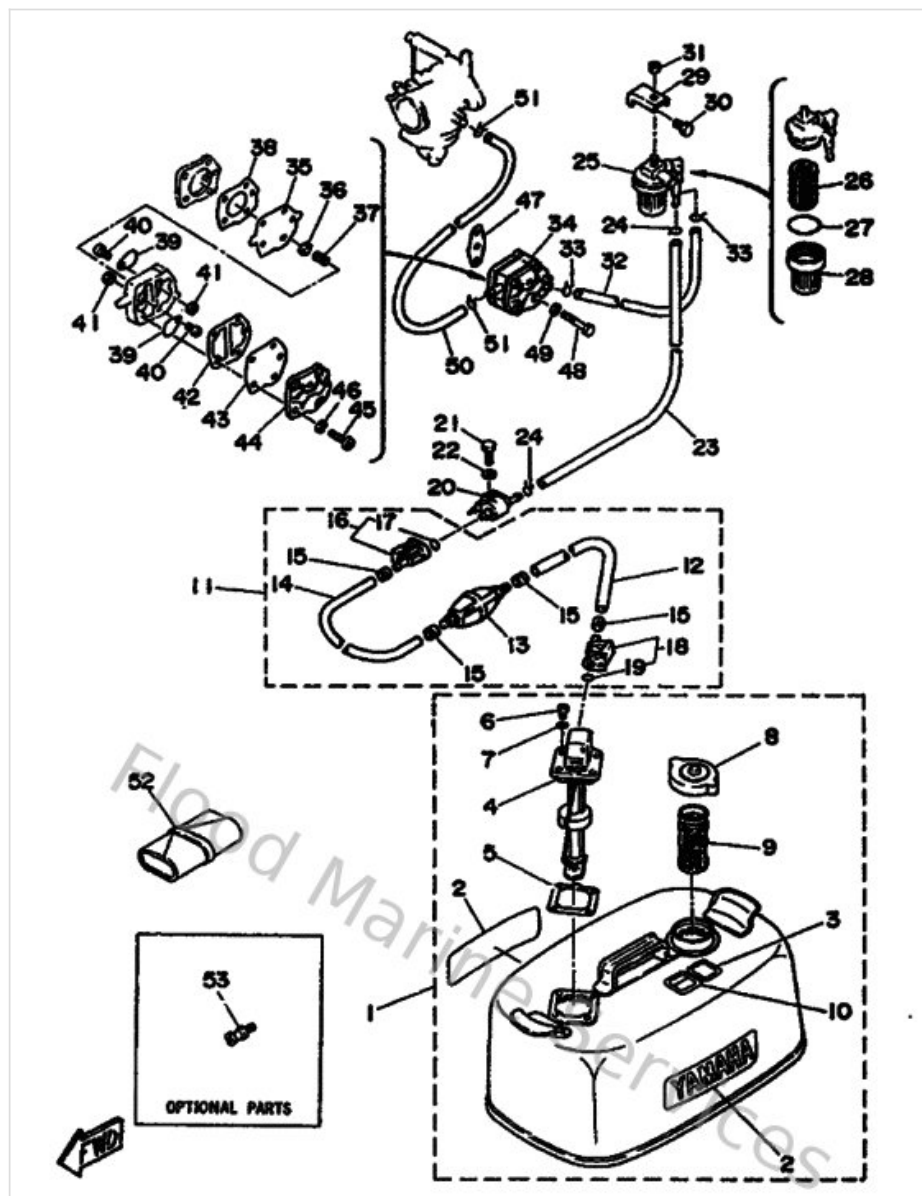
| Ref | Part | |
|-----|---|-------------------------|
| 4 | 6Y1242600200 Fuel meter assembly | Buy now |
| 5 | 6Y1242680000 Gasket, fuel meter | Buy now |
| 6 | 985860501600 Screw, pan head | Buy now |
| 7 | 6Y1243290000 Seal | Buy now |
| 8 | 6Y1246100000 Cap assembly | Buy now |
| 9 | 6Y1241670000 Strainer | Buy now |
| 10 | 6Y1242558000 Graphic, Fuel Tank 8 | Buy now |
| 11 | 6YL243066400 Fuel pipe comp. 1 | Buy now |
| 12 | 9044511M0600 Hose (I3000) | Buy now |
| 13 | 6Y1243600200 Primer pump assembly | Buy now |
| 14 | 9044511M0500 Hose (I1000) | Buy now |
| 15 | 650243515100 Band 1 | Buy now |
| 16 | 6G1243050000 Fuel pipe joint comp. 2 | Buy now |
| 17 | 932100828700 O-ring (655) | Buy now |
| 18 | 6Y1243050100 Fuel pipe joint comp. 2 | Buy now |

Fuel



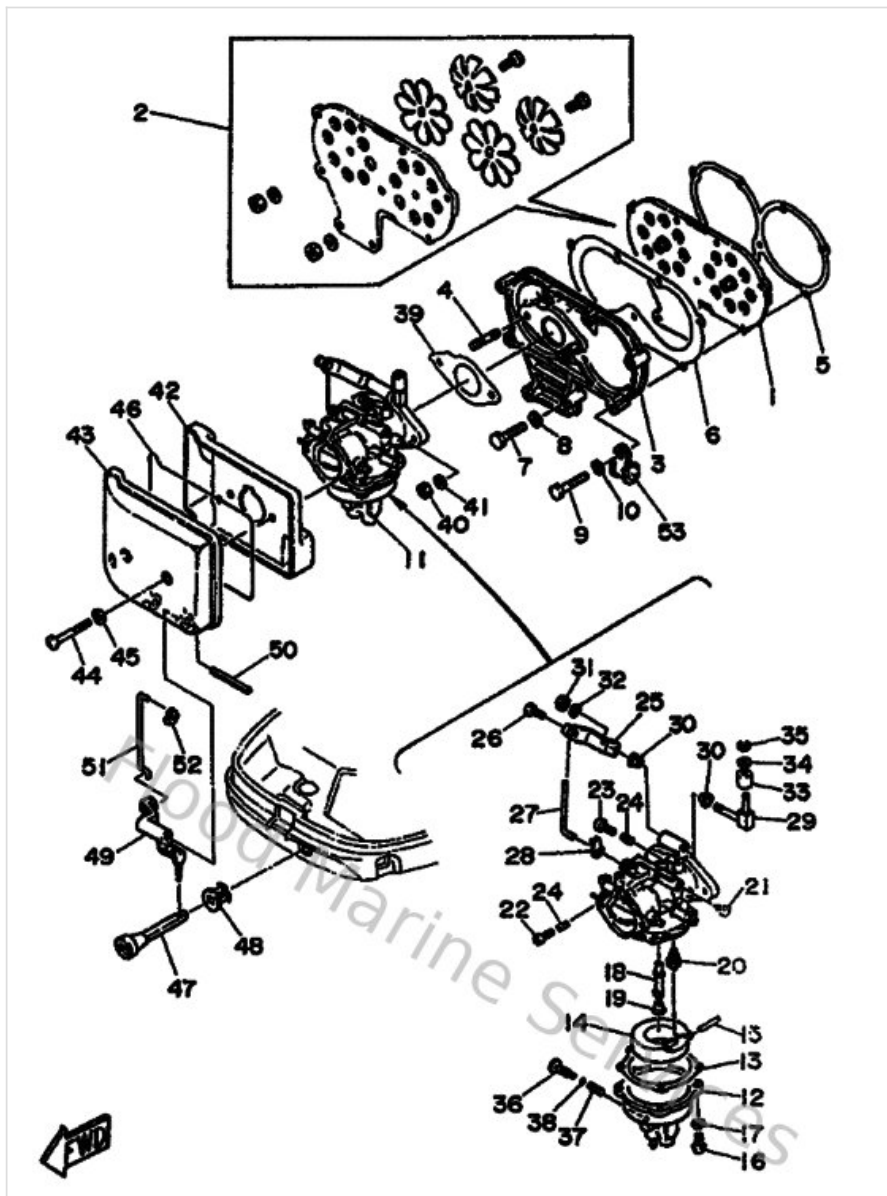
| Ref | Part | |
|-----|---|-------------------------|
| 20 | 6G1243041000 Fuel pipe joint comp. 1 | Buy now |
| 21 | 973950602000 Bolt(7u8) | Buy now |
| 22 | 929900660000 Washer, plain (646) | Buy now |
| 23 | 9044509M2500 Hose (l1500) | Buy now |
| 24 | 904670800400 Clip, pipe 6162435600 | Buy now |
| 25 | 61N245601000 Filter assembly | Buy now |
| 26 | 6F5245630000 Element, filter | Buy now |
| 27 | 9321037M2500 O-ring (655) | Buy now |
| 29 | 648245660100 Bracket, Filter | Buy now |
| 30 | 970130601200 Bolt(gh1) | Buy now |
| 31 | 953800860000 Nut (661) | Buy now |
| 32 | 664243110000 Pipe, Fuel 1 | Buy now |
| 34 | 6A0244100400 Fuel pump assembly | Buy now |
| 35 | 648244110000 Diaphragm | Buy now |
| 36 | 648244240000 Seat,spring | Buy now |

Fuel



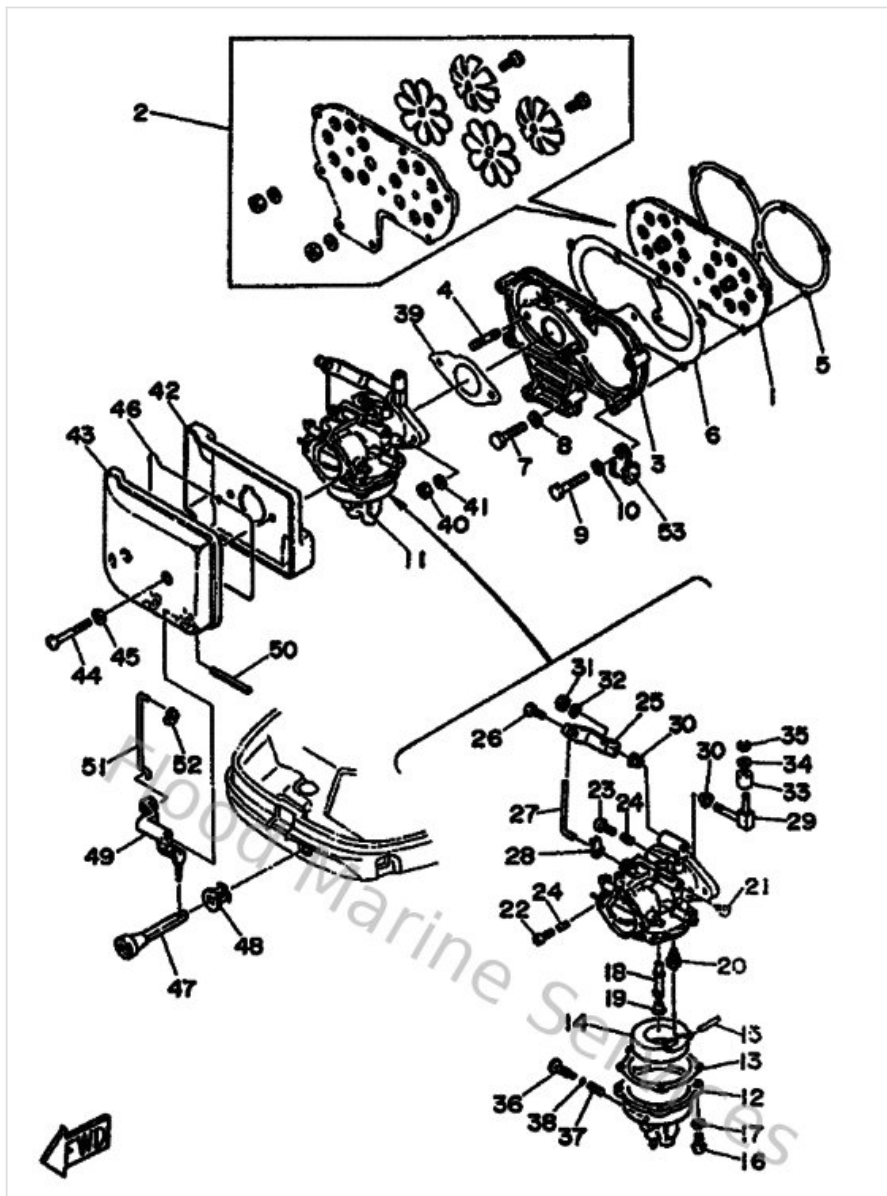
| Ref | Part | |
|-----|---|-------------------------|
| 37 | 648244230000 Spring,diaphragm | Buy now |
| 38 | 648244340100 Gasket, body | Buy now |
| 39 | 62Y244210100 Valve, check | Buy now |
| 40 | 6A0143250000 Screw, pan head | Buy now |
| 41 | 953800360000 Nut (6g8) | Buy now |
| 42 | 648244350200 Gasket, body 2 | Buy now |
| 43 | 663244110000 Diaphragm | Buy now |
| 45 | 985800553000 Ybs86-530 screw,panhead | Buy now |
| 46 | 929900510000 Ybs67-5 washer, spring | Buy now |
| 47 | 65024431A000 Gasket,fuel pump | Buy now |
| 48 | 970950604000 Bolt (682) | Buy now |
| 50 | 648243120100 Pipe, fuel 1 | Buy now |
| 52 | 656W28100100 Tool kit | Buy now |
| 53 | 6E0281930094 Plug, water check | Buy now |

Intake



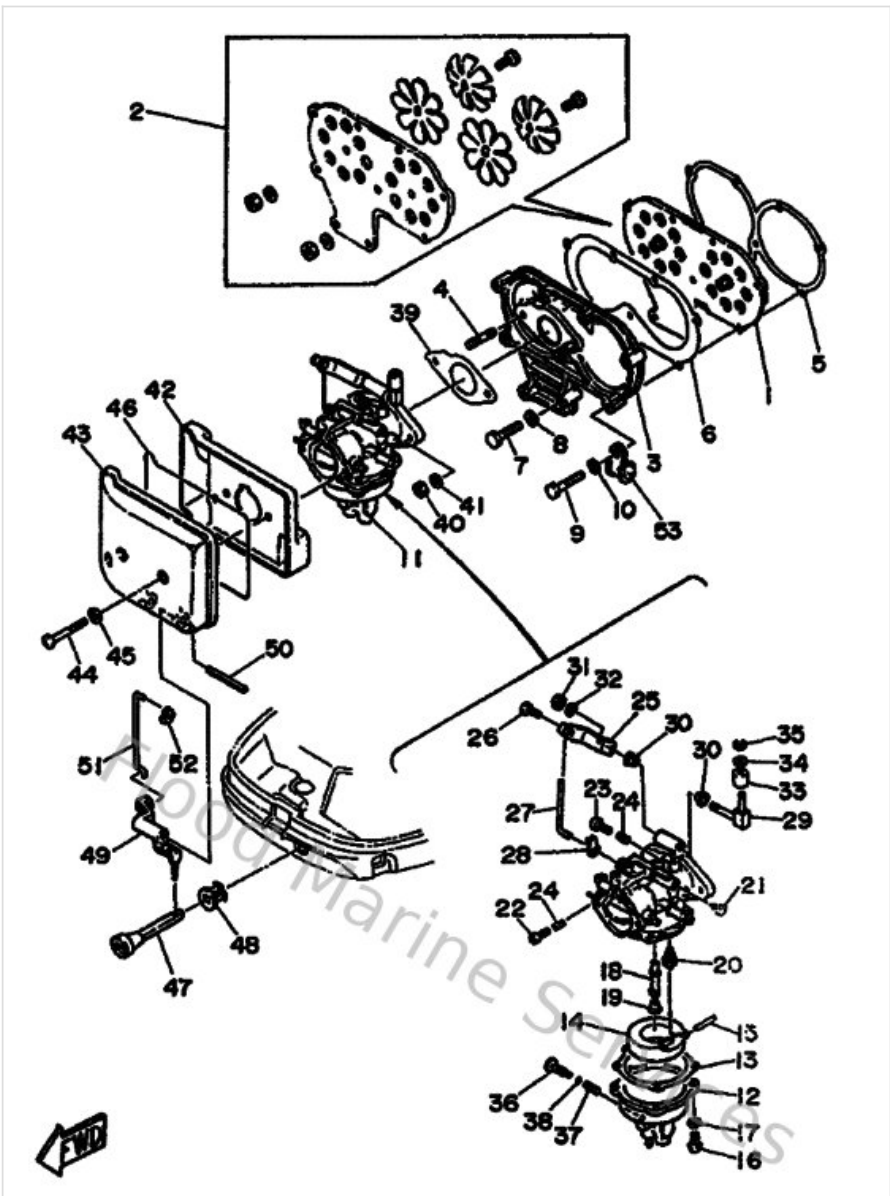
| Ref | Part | |
|-----|--|-------------------------|
| 1 | 689136100100 Reed valve assembly | Buy now |
| 2 | 689W00040000 Reed set | Buy now |
| 3 | 648136410194 Manifold, Intake 1 | Buy now |
| 4 | 9011606M3000 Bolt, stud(6e5) | Buy now |
| 5 | 64813621A000 Gasket, valve seat | Buy now |
| 6 | 64813645A000 Gasket, manifold 1 | Buy now |
| 7 | 973130602500 Bolt | Buy now |
| 8 | 929900660000 Washer, plain (646) | Buy now |
| 9 | 970130603500 Bolt(3rv) | Buy now |
| 12 | 664143810200 Body Float Chamber | Buy now |
| 13 | 648143840100 Gasket,float chamber | Buy now |
| 14 | 648143850000 Float | Buy now |
| 15 | 6E5143860100 Pin, float | Buy now |
| 16 | 985800401200 Screw, pan head (686) | Buy now |
| 17 | 929900410000 Ybs67-4 washer, spring | Buy now |

Intake



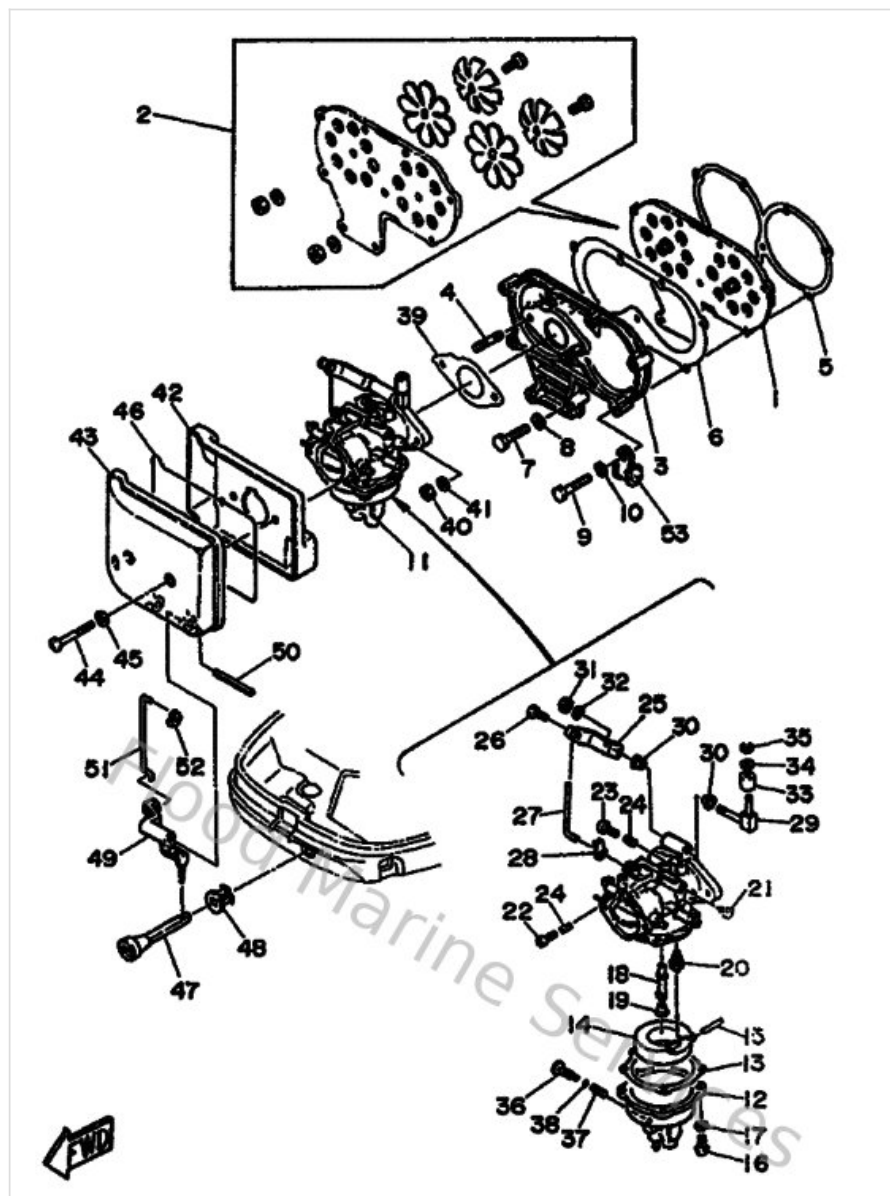
| Ref | Part | |
|-----|--|-------------------------|
| 18 | 6A9143410000 Nozzle, Main | Buy now |
| 19 | 689143436600 Jet, main (#133) | Buy now |
| 20 | 648143901400 Needle valve assembly | Buy now |
| 21 | 648143423100 Jet, Pilot (# 62) | Buy now |
| 22 | 985030401400 Screw, pan head(ga5) | Buy now |
| 23 | 647143230000 Screw, air adjusting | Buy now |
| 24 | 646142120100 Spring, pilot adjusting | Buy now |
| 25 | 648412100100 Accel. Arm Assembly | Buy now |
| 27 | 656412410000 Rod, Link | Buy now |
| 28 | 661412620200 Joint, choke lever | Buy now |
| 29 | 648W41210000 Sheave Shaft, Accel Link | Buy now |
| 30 | 903860500200 Bush 626412910000 | Buy now |
| 31 | 953030570000 Nut (656) | Buy now |
| 32 | 929900510000 Ybs67-5 washer, spring | Buy now |
| 33 | 664412310000 Collar Guide Pin (Carb) | Buy now |

Intake



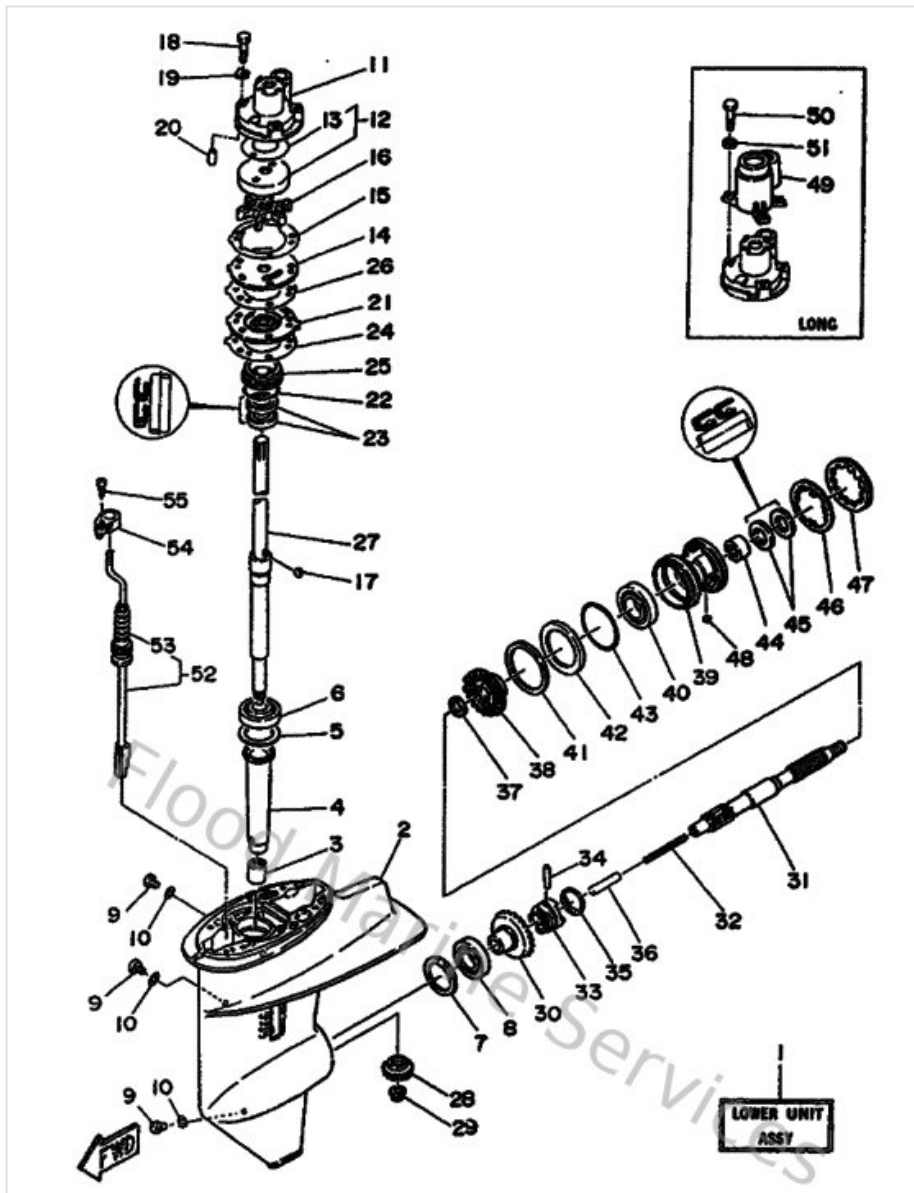
| Ref | Part | |
|-----|--|-------------------------|
| 34 | 929900520000 Ybs66-5 washer, plain | Buy now |
| 35 | 934300403100 Circlip(655 carb) | Buy now |
| 36 | 646143940000 Valve, Drain | Buy now |
| 37 | 646142230100 Spring Drain Valve (664) | Buy now |
| 38 | 646143970000 Ring O (664) | Buy now |
| 40 | 953800660000 Nut(661) | Buy now |
| 42 | 695144170000 Cover 1 | Buy now |
| 44 | 985800553000 Ybs86-530 screw,panhead | Buy now |
| 45 | 929900560000 Washer, plain (646) | Buy now |
| 46 | 695144760000 O-Ring (689) | Buy now |
| 47 | 682412710100 Knob, choke | Buy now |
| 48 | 689412730000 Grommet | Buy now |
| 49 | 689412520100 Lever, choke 1 | Buy now |
| 50 | 916904004800 Pin, spring (689) | Buy now |
| 51 | 695412560000 Rod, Choke 1 | Buy now |

Intake



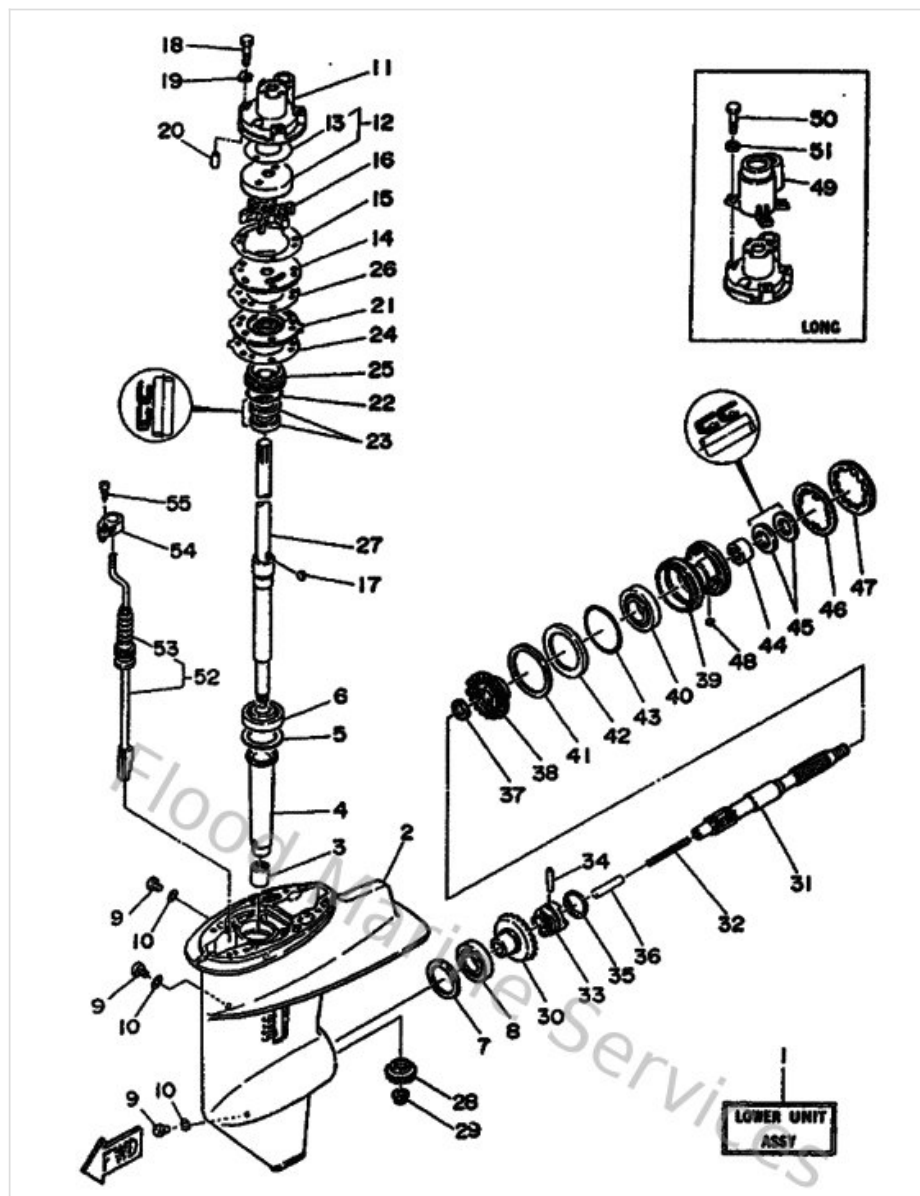
| Ref | Part | |
|-----|---|-------------------------|
| 53 | 9046106M0100 Clamp (6a4) | Buy now |

Lower Casing & Drive 1



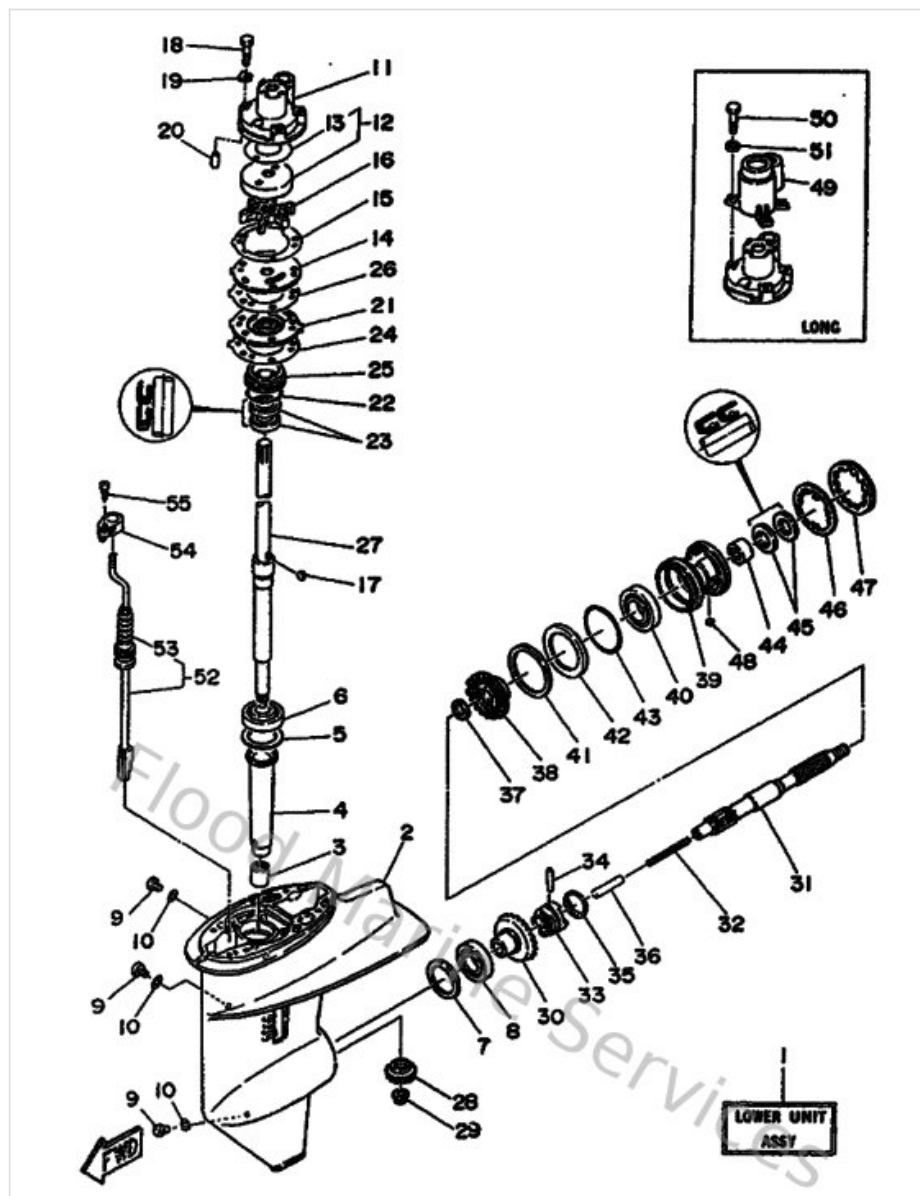
| Ref | Part | |
|-----|---|-------------------------|
| 3 | 93315017U400 Brg,cyl-cal roller (689) | Buy now |
| 4 | 689455360000 Sleeve Drive Shaft | Buy now |
| 5 | 664455876000 Shim (t:0.50mm) | Buy now |
| 6 | 93332000U400 Brg,tapered roller 42mm (689) | Buy now |
| 7 | 664455676000 Shim (t:0.50mm) | Buy now |
| 8 | 933320000500 Brg,cyl-cal roller 0.19g nt | Buy now |
| 9 | 903400800200 Plug, straight screw | Buy now |
| 10 | 904300802000 Gasket | Buy now |
| 11 | 689443110300 Housing, water pump | Buy now |
| 12 | 689W44320200 Insert cartridge comp. | Buy now |
| 13 | 689443670100 Rubber, water seal 3 | Buy now |
| 14 | 689443230300 Outer plate, cartridge | Buy now |
| 15 | 68944324A000 Gasket, cartridge | Buy now |
| 16 | 689443520200 Impeller | Buy now |
| 17 | 664443380000 Key, woodruff | Buy now |

Lower Casing & Drive 1



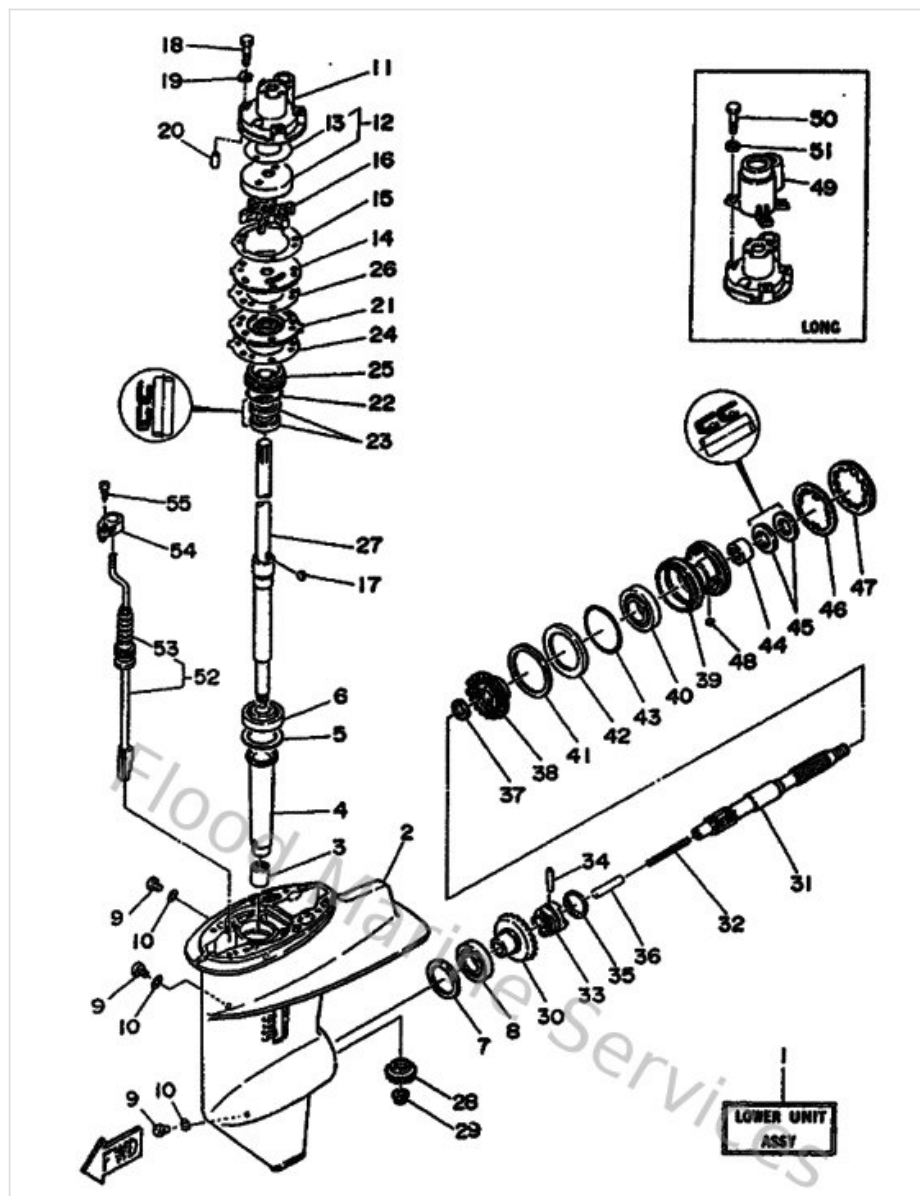
| Ref | Part | |
|-----|--|-------------------------|
| 18 | 9010106M5600 Bolt(jf7) | Buy now |
| 19 | 9020906M0400 Washer | Buy now |
| 20 | 9360410M0300 Pin, dowel (688) | Buy now |
| 21 | 68944325025B Protector Oil Seal | Buy now |
| 22 | 9321040M1000 O-ring (682) | Buy now |
| 23 | 931012206700 Oil seal (22x36x6-663) | Buy now |
| 24 | 68944315A000 Gasket, water pump | Buy now |
| 25 | 689453440094 Cover, oil seal | Buy now |
| 26 | 68944316A000 Gasket, water pump | Buy now |
| 27 | 689455010000 Drive shaft comp | Buy now |
| 28 | 689455510000 Pinion | Buy now |
| 29 | 9017909M0200 Nut (689) | Buy now |
| 30 | 689455600000 Gear | Buy now |
| 31 | 689456110100 Shaft, Propeller | Buy now |
| 32 | 905011006500 Spring compression648456360000 | Buy now |

Lower Casing & Drive 1



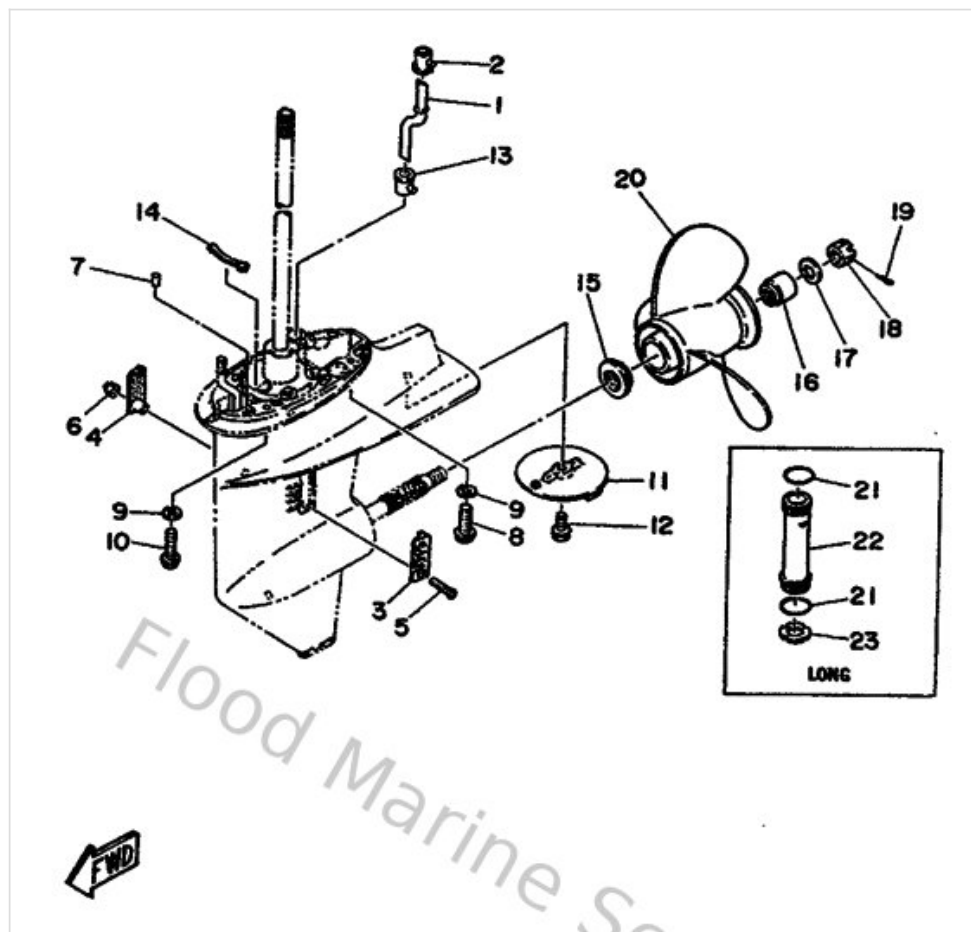
| Ref | Part | |
|-----|---|-------------------------|
| 33 | 664456310000 Clutch, dog | Buy now |
| 34 | 902500501000 Pin straight 648456320000 | Buy now |
| 35 | 648456330000 Ring, cross pin | Buy now |
| 36 | 648456350000 Plunger, shift | Buy now |
| 37 | 902012041700 Washer, plate(663) | Buy now |
| 38 | 689453310194 Housing, bearing | Buy now |
| 40 | 933060060900 Bearing(2hr) | Buy now |
| 41 | 664455770130 Shim (t:0.30mm) | Buy now |
| 42 | 664455760000 Washer, thrust 2 | Buy now |
| 44 | 933152200400 Brg,cyl-cal roller 21g nt | Buy now |
| 45 | 9310120M0700 Oil seal | Buy now |
| 47 | 664453840000 Nut | Buy now |
| 48 | 902820401000 Key, strait(663) | Buy now |
| 49 | 68944312005B Cover Water Pump Housing | Buy now |
| 50 | 973950603500 Bolt(j52) | Buy now |

Lower Casing & Drive 1



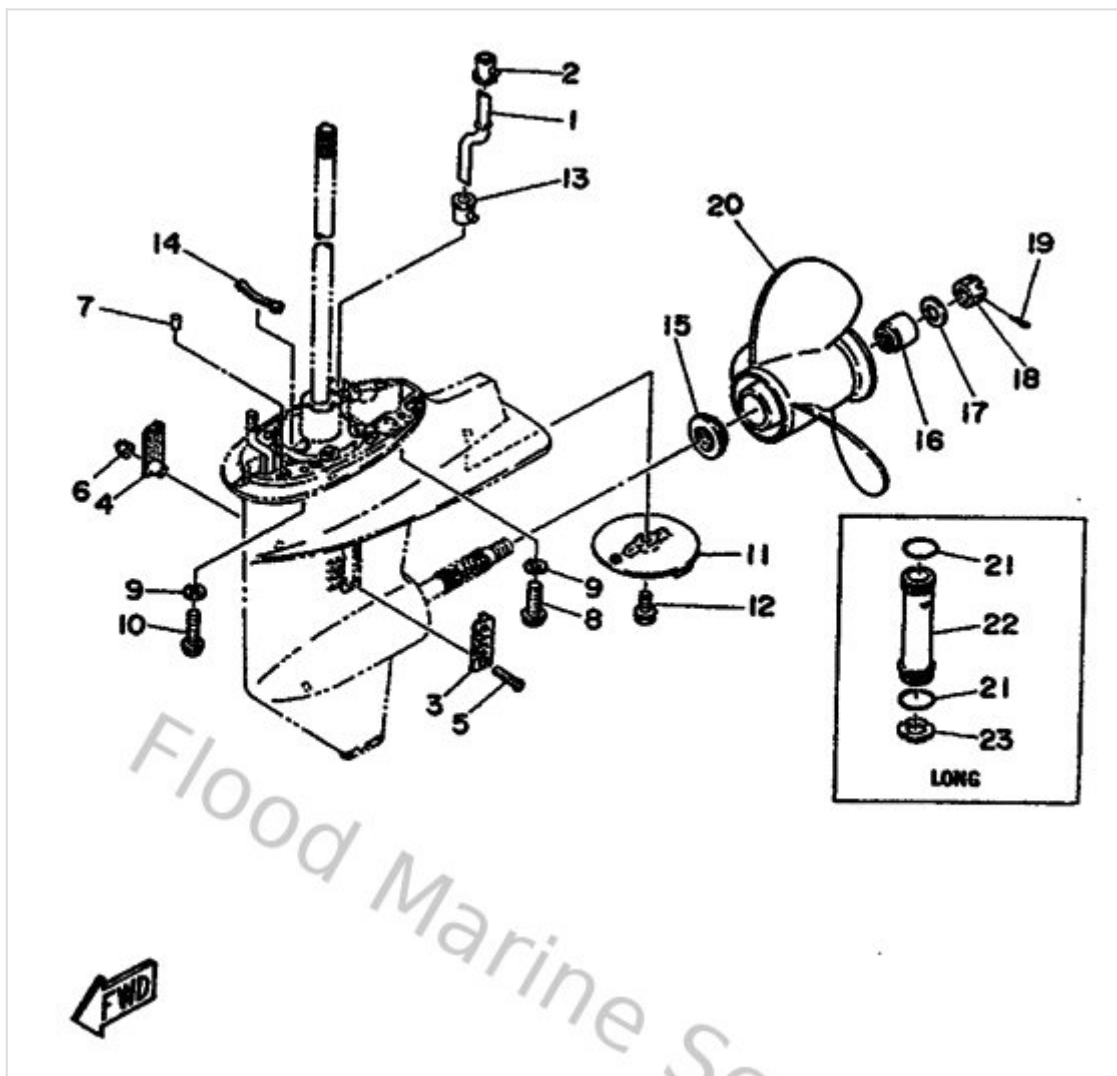
| Ref | Part | |
|-----|---|-------------------------|
| 51 | 929900660000 Washer, plain (646) | Buy now |
| 52 | 695441501000 Shift cam assembly | Buy now |
| 53 | 664441470000 Boot, shift rod | Buy now |
| 54 | 689441760100 Bracket | Buy now |
| 55 | 977805011000 Screw, tapping(6u1) | Buy now |

Lower Casing & Drive 2



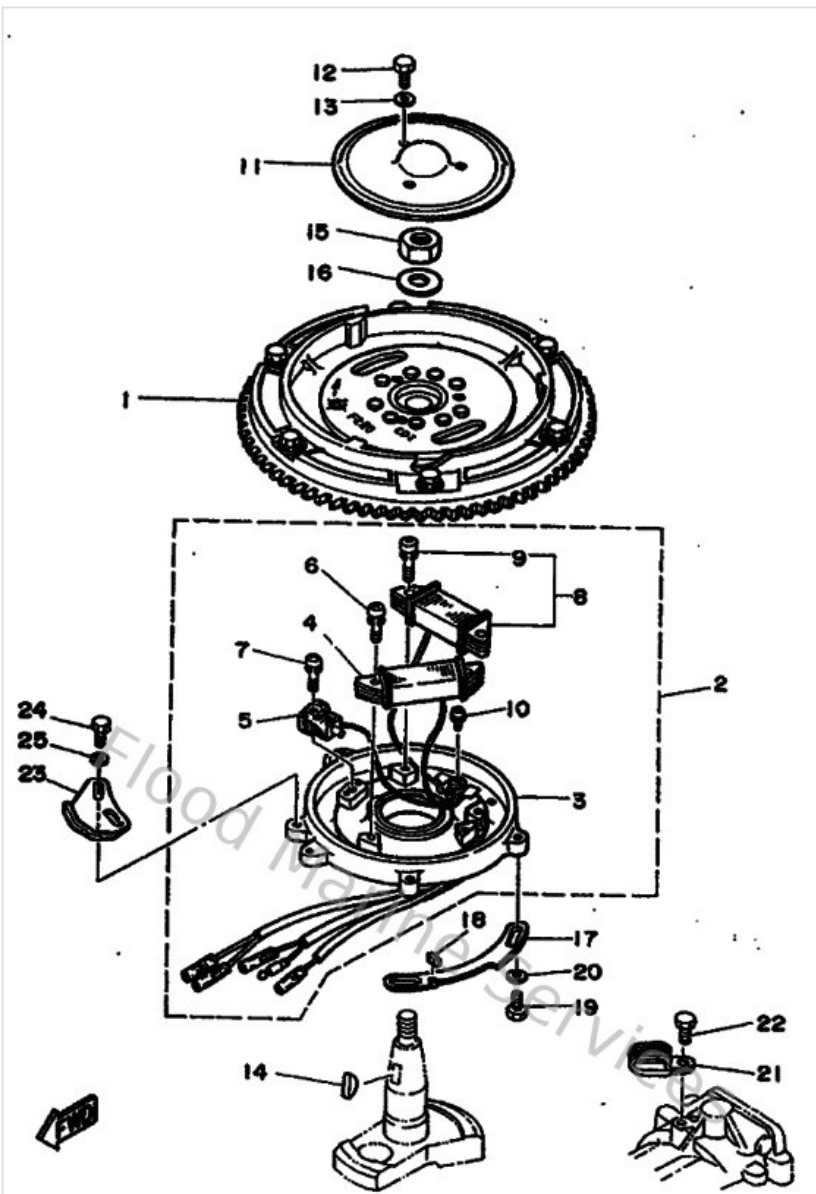
| Ref | Part | |
|-----|---|-------------------------|
| 1 | 664443610000 Tube, water 1 | Buy now |
| 2 | 689443660000 Damper, water seal 2 | Buy now |
| 3 | 689452140100 Cover, water inlet 1 | Buy now |
| 4 | 689452150100 Cover Water Inlet 2 | Buy now |
| 5 | 985800552500 Screw, panhead (a93) | Buy now |
| 6 | 901850500200 Nut nylon (sus)(ex4) | Buy now |
| 7 | 936061201900 Pin, dowel (614) | Buy now |
| 8 | 901051005600 Bolt, engine mounting | Buy now |
| 9 | 929901060000 Washer, plate | Buy now |
| 10 | 9010510M1200 Bolt (689) | Buy now |
| 11 | 664453710100 Tab-trim | Buy now |
| 12 | 9010508M0200 Bolt hexagon | Buy now |
| 13 | 626443650100 Damper, water seal 1 | Buy now |
| 14 | 689443140000 Spacer | Buy now |
| 15 | 664459870100 Spacer | Buy now |

Lower Casing & Drive 2



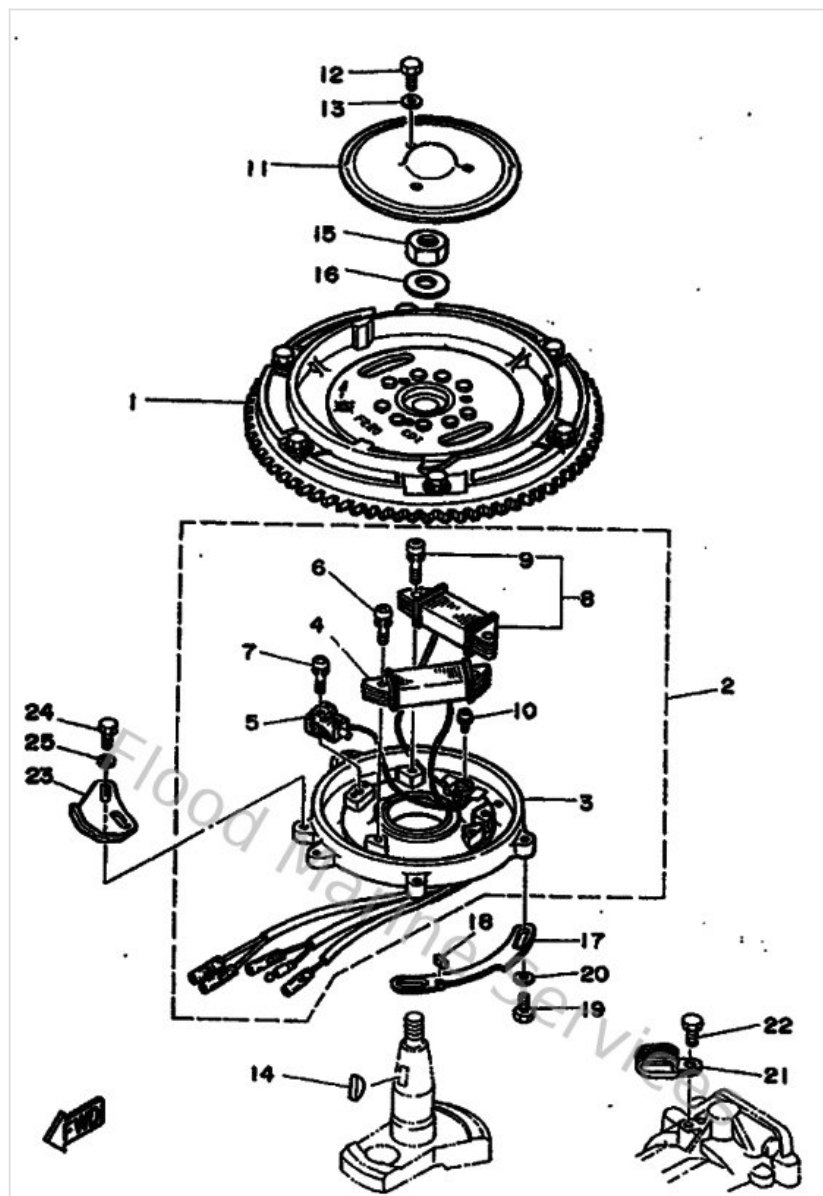
| Ref | Part | |
|-----|--|-------------------------|
| 16 | 689459970000 Spacer | Buy now |
| 17 | 929901420000 Washer, plain | Buy now |
| 18 | 901711401300 Nut(664) | Buy now |
| 19 | 914903003000 Pin, cotter | Buy now |
| 20 | 664459470100 Propeller (3x9-7/8 x11-1/4 -f) | Buy now |
| 21 | 932102624000 O-ring | Buy now |
| 22 | 689443620094 Tube, Water 2 | Buy now |
| 23 | 689443280300 Plate | Buy now |

Magneto



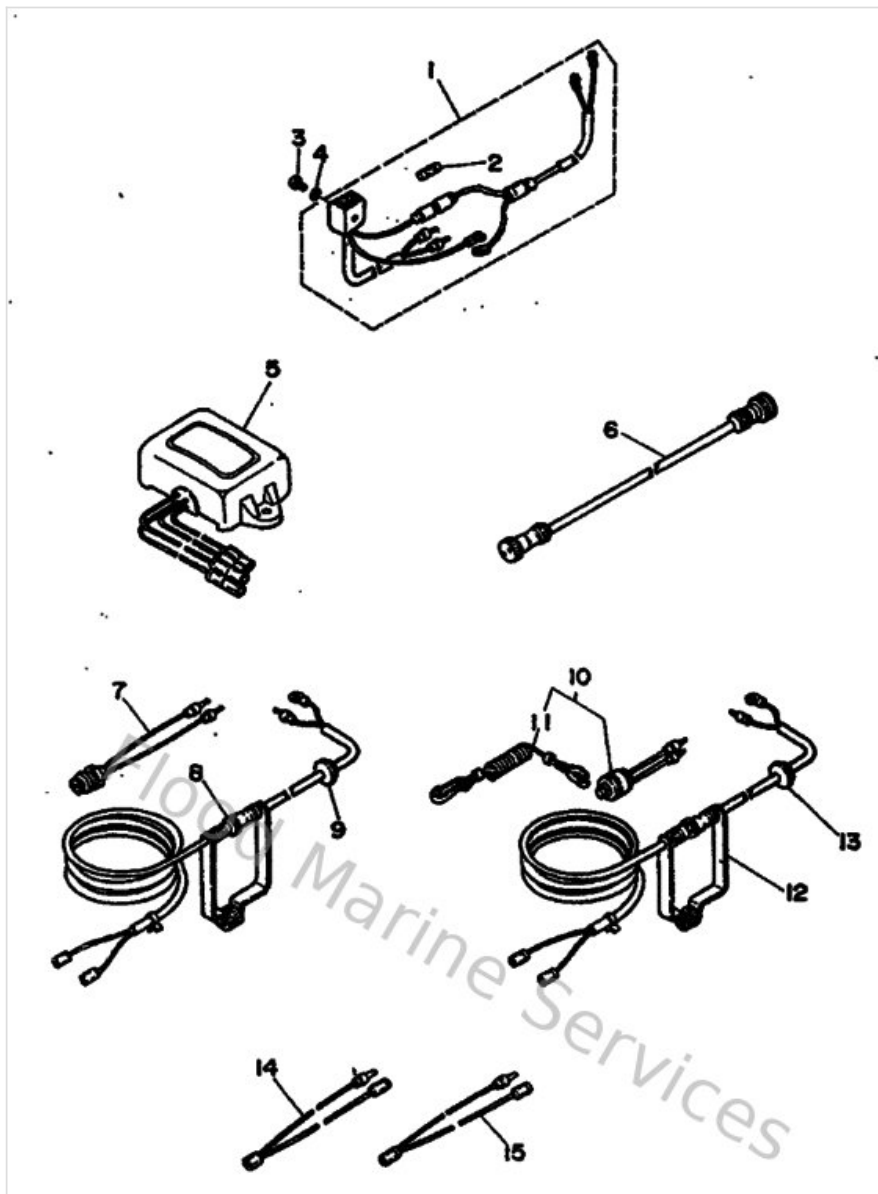
| Ref | Part | |
|-----|---|-------------------------|
| 4 | 695855207000 Charge coil assembly | Buy now |
| 5 | 695855807000 Coil, Pulser | Buy now |
| 6 | 901590503900 Screw panhead (695) | Buy now |
| 7 | 985070501600 Screw, pan head(jj6) | Buy now |
| 8 | 69581303A000 Lighting Coil Assembly | Buy now |
| 9 | 901590504000 Screw, pan head(4my) | Buy now |
| 11 | 648813620000 Cover Hole | Buy now |
| 12 | 970130601200 Bolt(gh1) | Buy now |
| 13 | 929900630000 Washer, tooth | Buy now |
| 14 | 902800501300 Key, woodruff | Buy now |
| 15 | 901701206600 Nut, hexagon 6481155500 | Buy now |
| 16 | 90201126A700 Washer, plate (4n0) | Buy now |
| 17 | 6A9416150100 Stopper, Magneto Base | Buy now |
| 18 | 695441940000 Cap | Buy now |
| 20 | 929900660000 Washer, plain (646) | Buy now |

Magneto



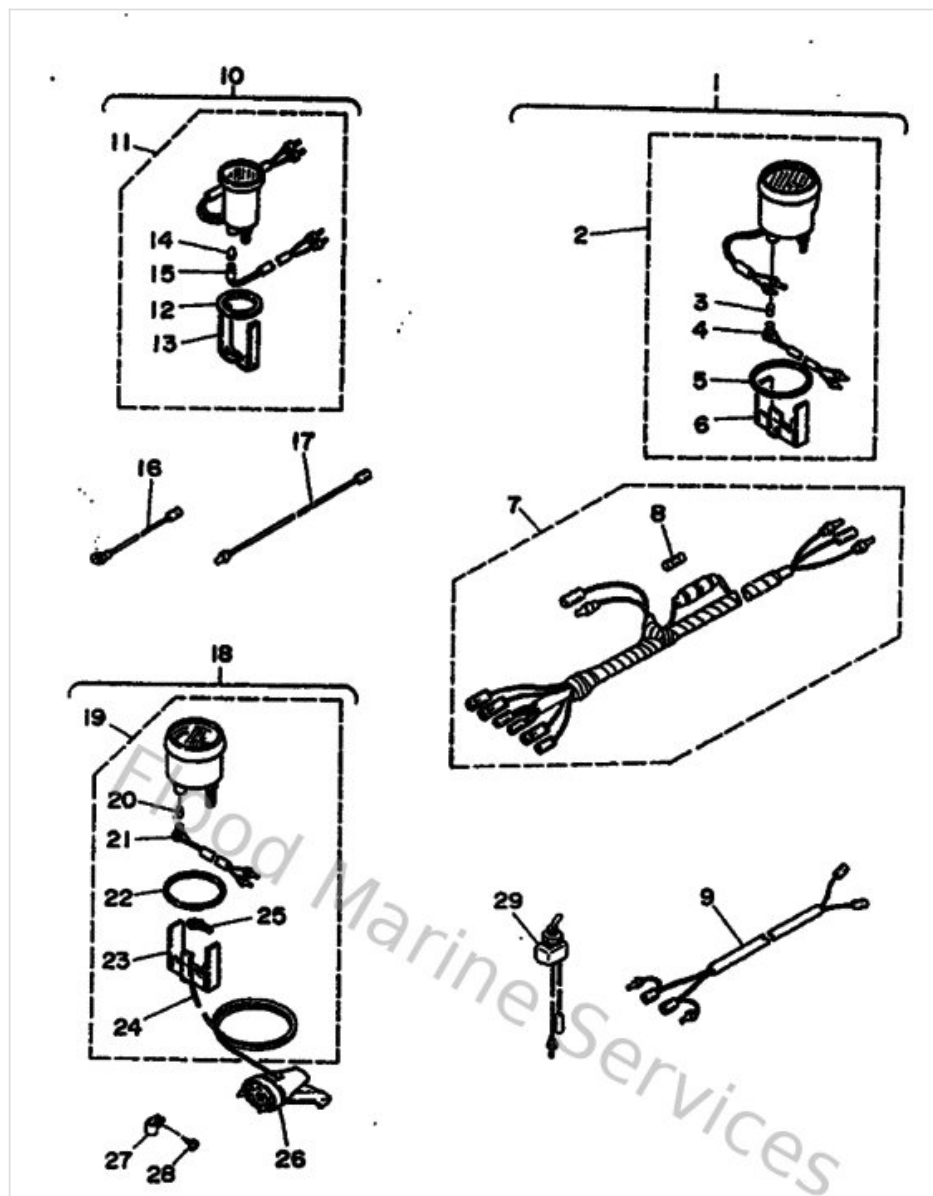
| Ref | Part | |
|-----|---|-------------------------|
| 21 | 9046106M0100 Clamp (6a4) | Buy now |
| 22 | 973130601000 Bolt | Buy now |
| 23 | 6A9412130094 Cam Accele | Buy now |
| 24 | 973950501200 Bolt, hexagon | Buy now |
| 25 | 929900560000 Washer, plain (646) | Buy now |

Optional Parts 1



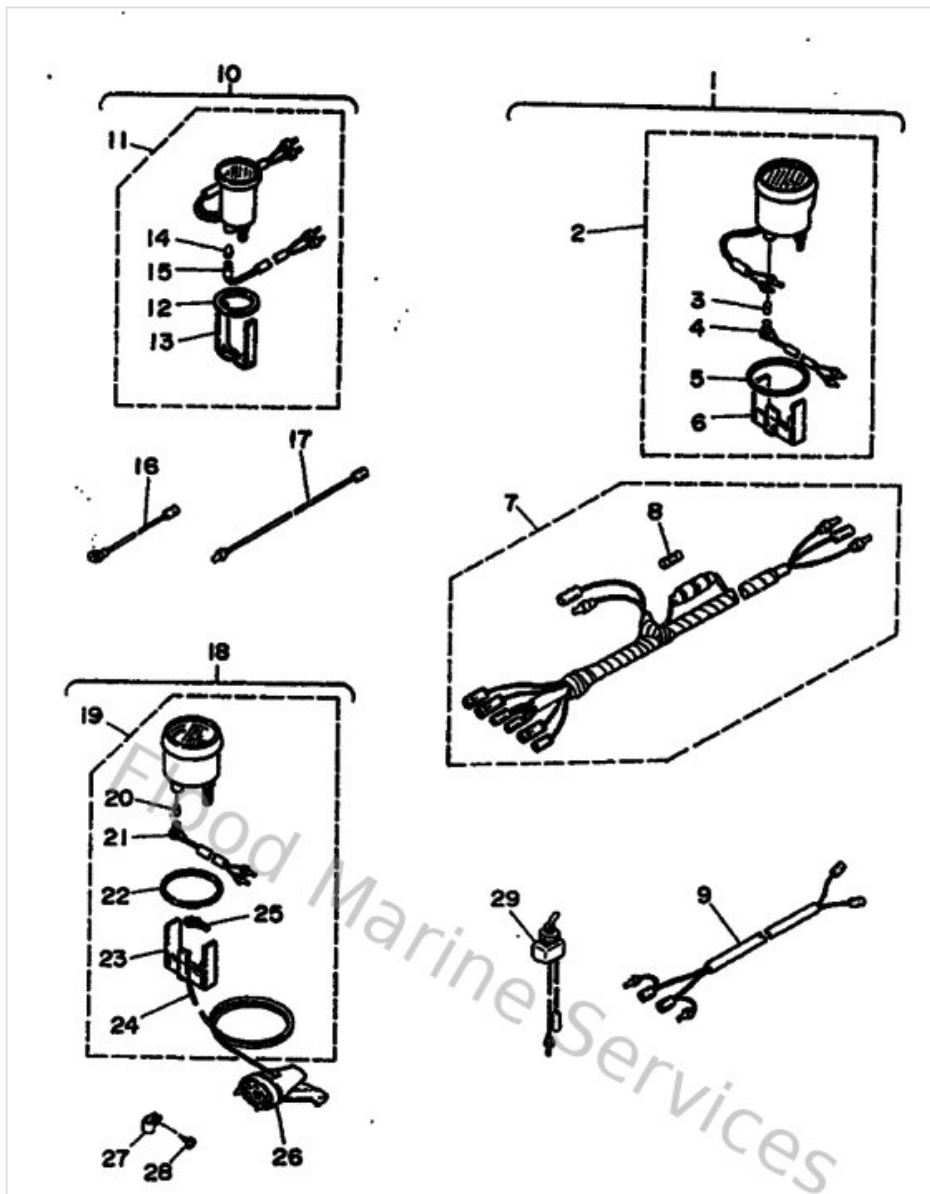
| Ref | Part | |
|-----|---|-------------------------|
| 1 | 676819700000 Rectifier assembly | Buy now |
| 2 | 682821510000 Fuse | Buy now |
| 3 | 985030502500 Screw, panhead (a93) | Buy now |
| 4 | 929900560000 Washer, plain (646) | Buy now |
| 5 | 663819101000 Voltage Regulator assembly | Buy now |
| 6 | 689825531000 Extension, wire lead | Buy now |
| 7 | 689825501100 Stop switch assembly | Buy now |
| 9 | 689427254000 Grommet | Buy now |
| 10 | 689825751200 Engine stop switch assembly | Buy now |
| 11 | 682825560000 Lanyard, stop switch | Buy now |
| 12 | 689825532000 Extension, wire lead | Buy now |

Optional Parts 2



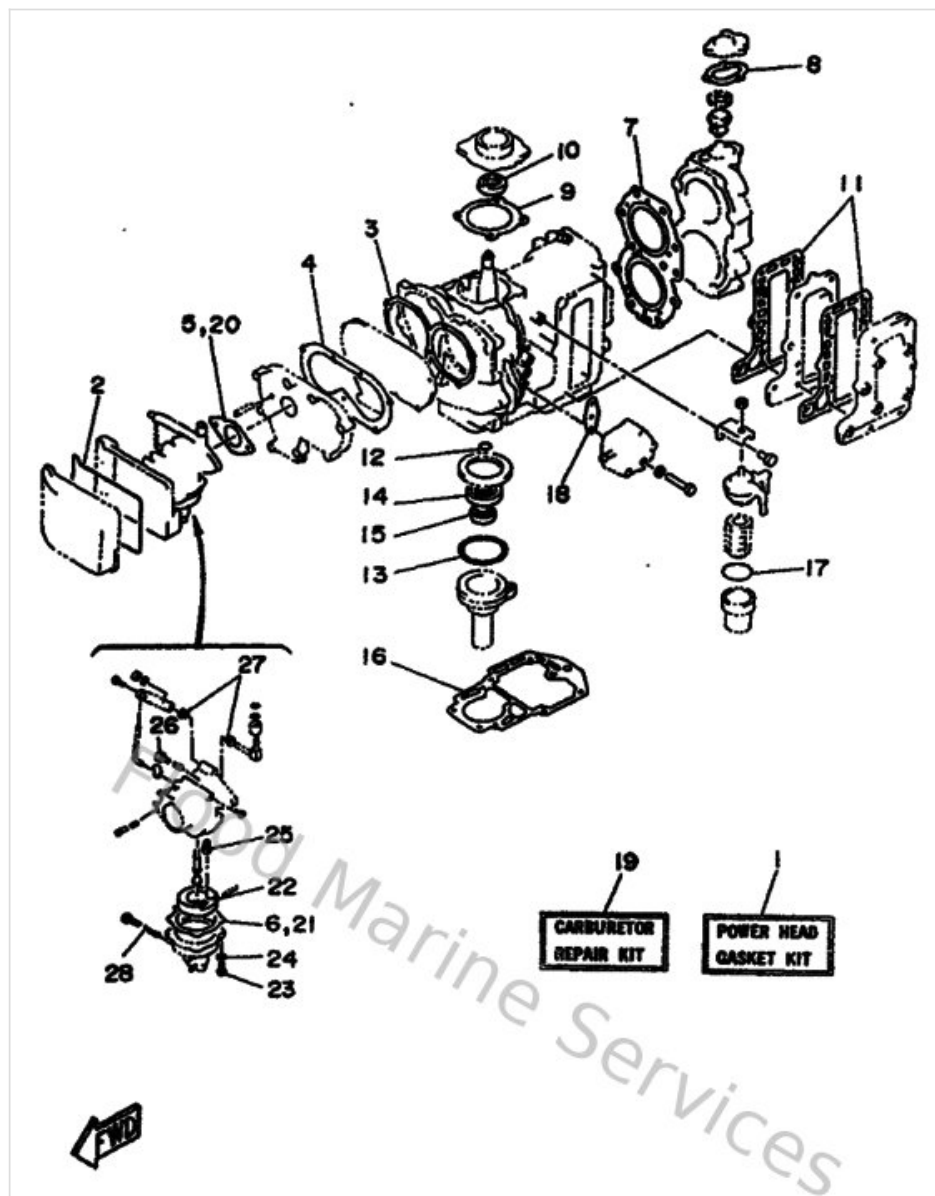
| Ref | Part | |
|-----|---|-------------------------|
| 1 | 6Y5W00801200 Tachometer kit | Buy now |
| 2 | 6Y5835401200 Tachometer assembly | Buy now |
| 3 | 688835160000 Bulb, pilot (t6.5, 12v-1.7w) | Buy now |
| 4 | 688835360000 Socket, meter | Buy now |
| 5 | 6Y5835230000 Damper | Buy now |
| 6 | 6Y5835140000 Plate, fitting | Buy now |
| 7 | 6Y583553N000 Wire, lead (l=2.5m) | Buy now |
| 8 | 1E6821510000 Fuse (10a) | Buy now |
| 9 | 6Y5835531000 Wire, lead | Buy now |
| 10 | 6Y5W00883100 Hour meter kit | Buy now |
| 11 | 6Y5835041100 Hour meter assembly (digital) | Buy now |
| 12 | 688836640000 Damper | Buy now |
| 13 | 6Y5835770000 Plate, fitting | Buy now |
| 14 | 6Y5835180000 Bulb (12v-1.7w) t6.5 | Buy now |
| 15 | 6Y5835360000 Socket, meter | Buy now |

Optional Parts 2



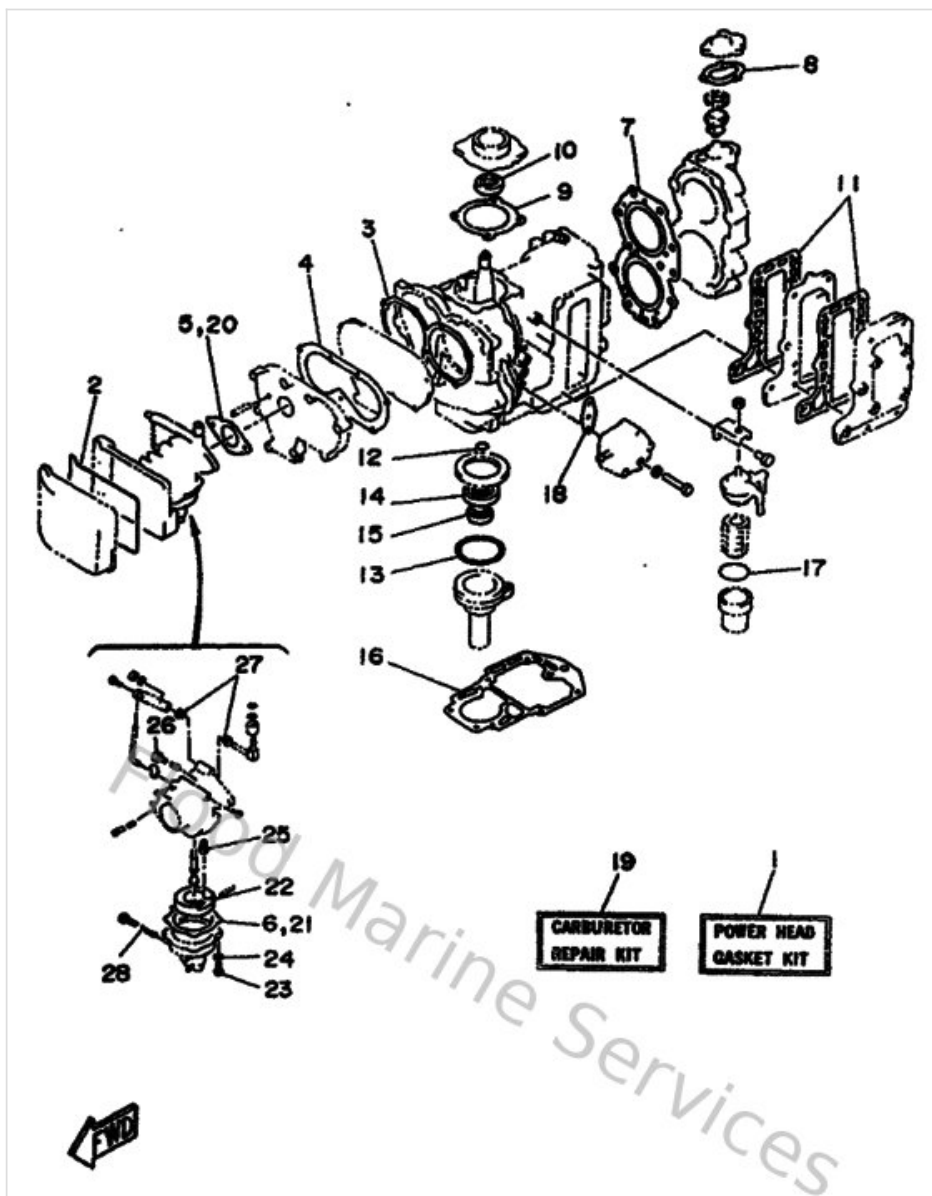
| Ref | Part | |
|-----|--|-------------------------|
| 16 | 66383553A000 Wire, lead | Buy now |
| 17 | 66383553Y000 Wire, lead | Buy now |
| 18 | 6Y5W00814000 Speedometer Kit | Buy now |
| 19 | 6Y5835103000 Speedometer assembly (km/h,knots,m | Buy now |
| 24 | 6Y5835571000 Tube (8m) | Buy now |
| 25 | 9046511M1000 Clamp | Buy now |
| 26 | 688835560100 Sender (with hose l:6m/d:4mm) | Buy now |
| 27 | 906013140200 021-58119-01 clip,nylon 14 | Buy now |
| 28 | 977804011600 Screw,panh.tapping | Buy now |
| 29 | 688825260000 Switch, lamp | Buy now |

Repair Kit 1



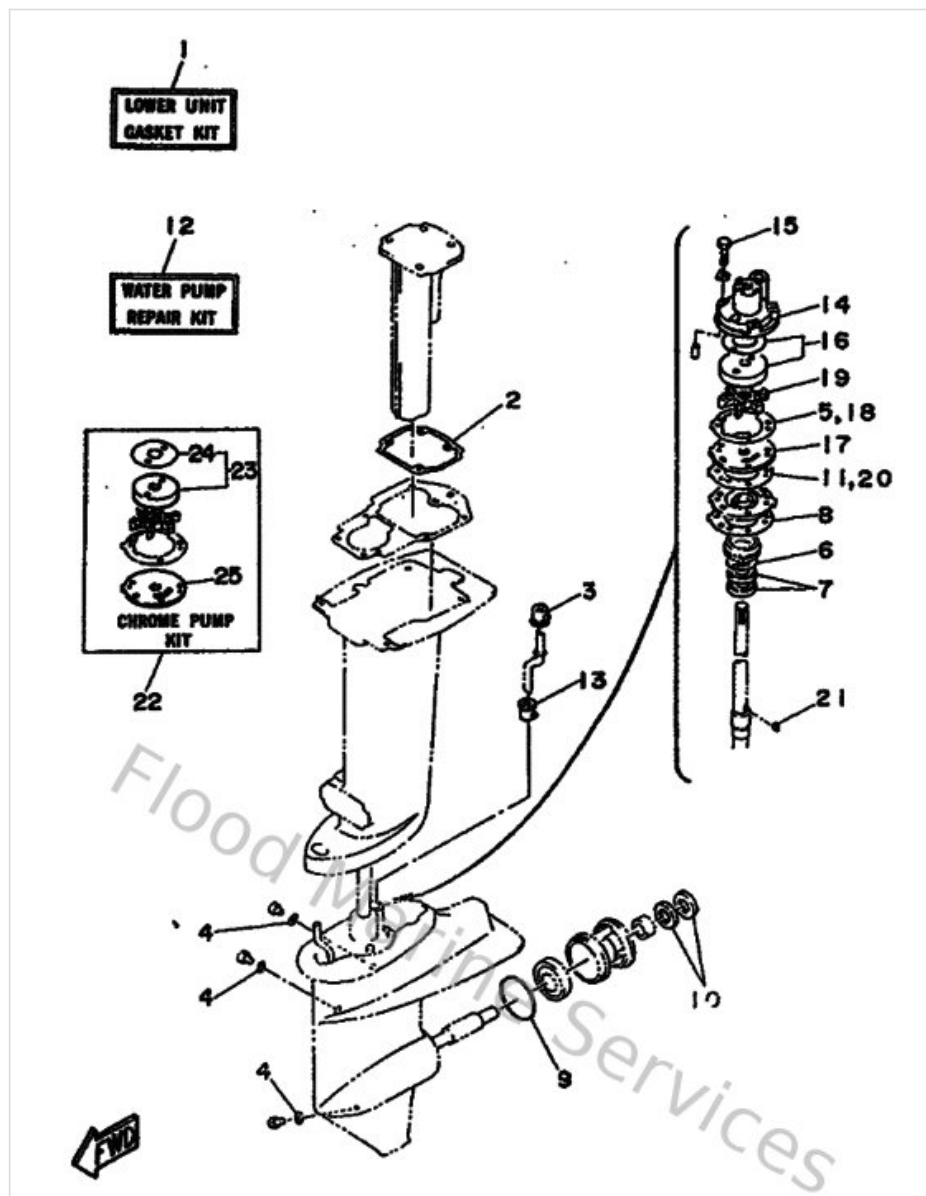
| Ref | Part | |
|-----|---|-------------------------|
| 1 | 695W00010200 Gasket kit | Buy now |
| 2 | 695144760000 O-Ring (689) | Buy now |
| 3 | 64813621A000 Gasket, valve seat | Buy now |
| 4 | 64813645A000 Gasket, manifold 1 | Buy now |
| 5 | 64814198A000 Gasket | Buy now |
| 6 | 648143840100 Gasket, float chamber | Buy now |
| 7 | 69511181A000 Gasket, cylinder head 1 | Buy now |
| 8 | 65512414A100 Gasket, cover | Buy now |
| 9 | 66415369A000 Gasket, oil seal housing | Buy now |
| 10 | 931022309600 Oil seal (23x38x7-648) | Buy now |
| 11 | 664411140000 Gasket, exhaust outer cover | Buy now |
| 12 | 932101627500 O-ring | Buy now |
| 13 | 9321057M0900 O-ring (683) | Buy now |
| 14 | 9310125M3500 Oil seal(6a4) | Buy now |
| 15 | 9310116M3600 Oil seal(6a8) | Buy now |

Repair Kit 1



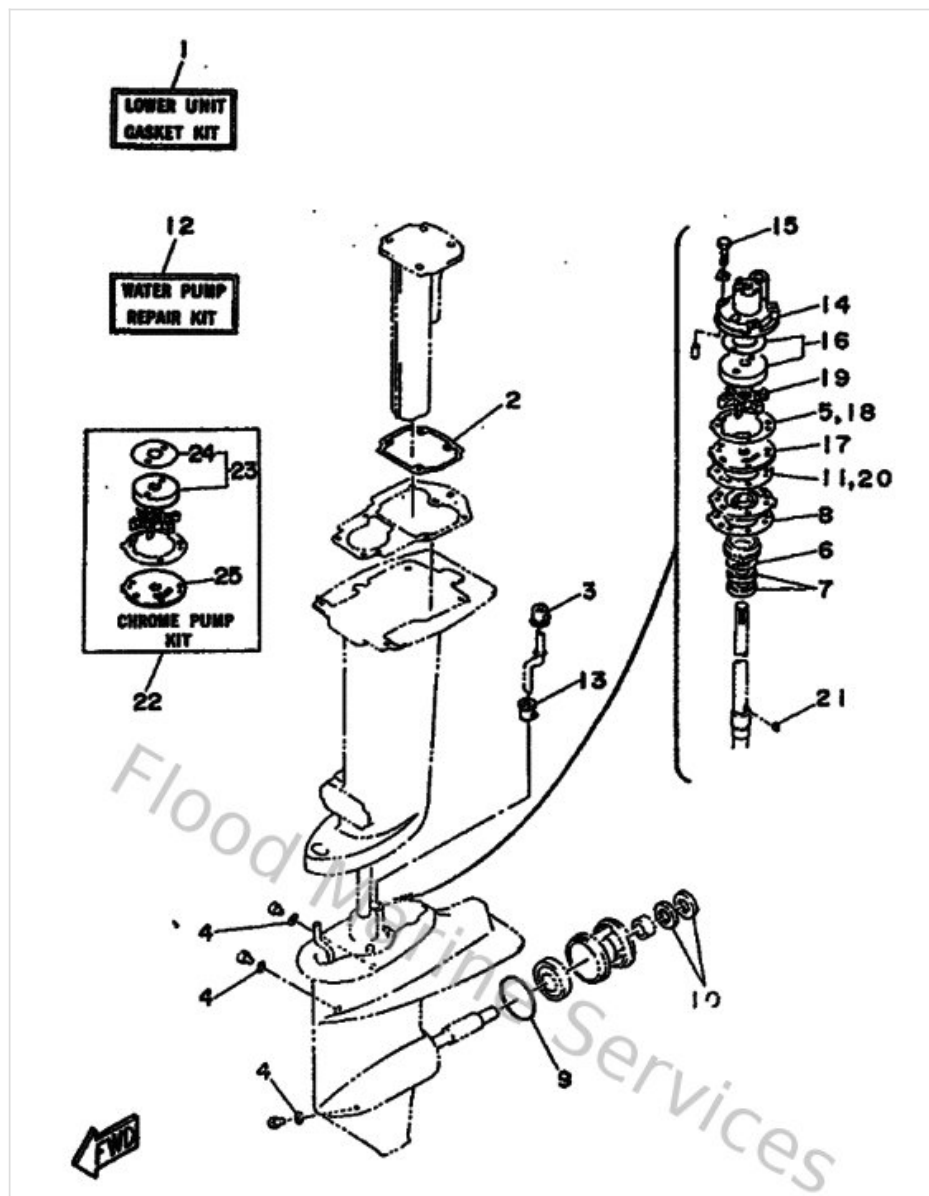
| Ref | Part | |
|-----|--|-------------------------|
| 16 | 68945113A100 Gasket, upper casing | Buy now |
| 17 | 9321037M2500 O-ring (655) | Buy now |
| 18 | 65024431A000 Gasket, fuel pump | Buy now |
| 19 | 689W00930200 Carburetor repair kit | Buy now |
| 22 | 648143850000 Float | Buy now |
| 23 | 985800401200 Screw, pan head (686) | Buy now |
| 24 | 929900410000 Ybs67-4 washer, spring | Buy now |
| 25 | 648143901400 Needle valve assembly | Buy now |
| 26 | 647143230000 Screw, air adjusting | Buy now |
| 27 | 903860500200 Bush 626412910000 | Buy now |
| 28 | 646143970000 Ring O (664) | Buy now |

Repair Kit 2



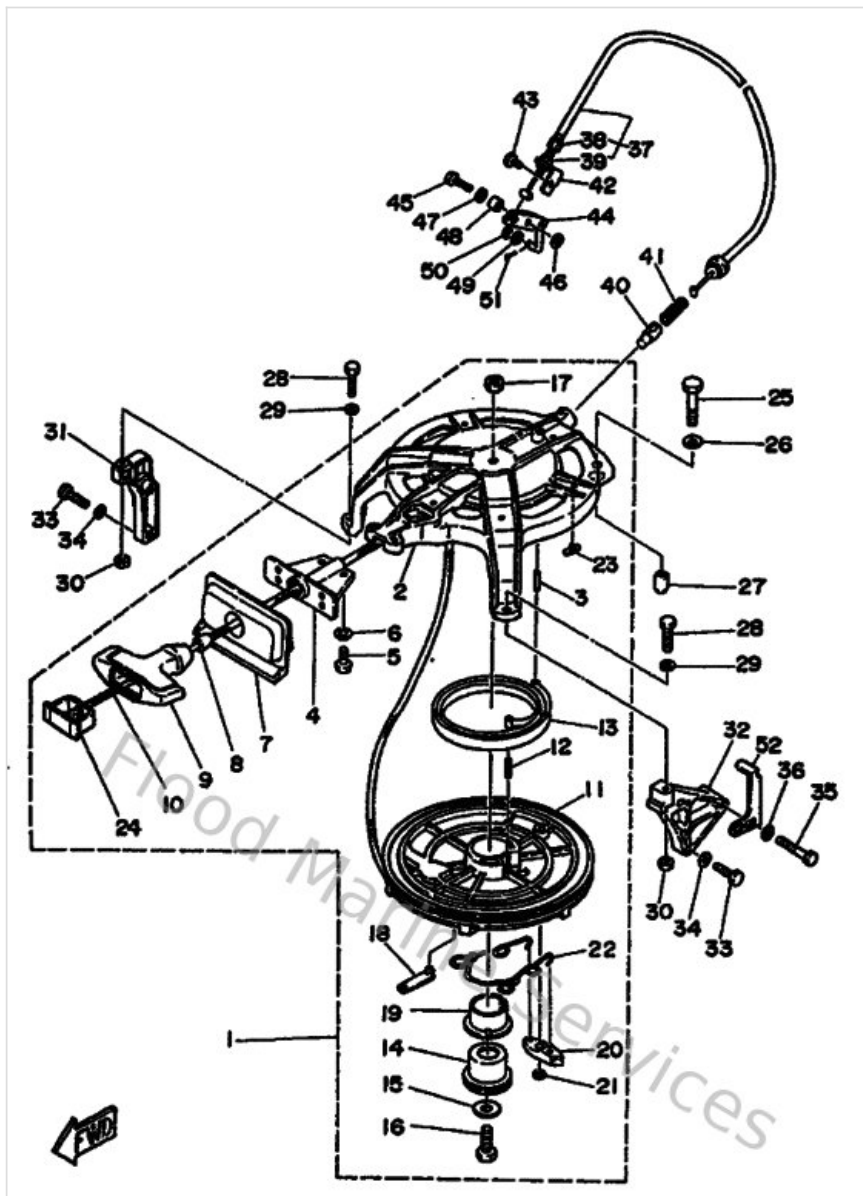
| Ref | Part | |
|-----|--|-------------------------|
| 1 | 689W00012300 Gasket kit | Buy now |
| 2 | 66441134A000 Gasket, exhaust manifold | Buy now |
| 3 | 689443660000 Damper, water seal 2 | Buy now |
| 4 | 904300802000 Gasket | Buy now |
| 5 | 68944324A000 Gasket, cartridge | Buy now |
| 6 | 9321040M1000 O-ring (682) | Buy now |
| 7 | 931012206700 Oil seal (22x36x6-663) | Buy now |
| 8 | 68944315A000 Gasket, water pump | Buy now |
| 9 | 9321060MA300 O-ring(6j8) | Buy now |
| 10 | 9310120M0700 Oil seal | Buy now |
| 11 | 68944316A000 Gasket, water pump | Buy now |
| 12 | 689W00780600 Water pump repair kit | Buy now |
| 13 | 626443650100 Damper, water seal 1 | Buy now |
| 14 | 689443110300 Housing, water pump | Buy now |
| 15 | 9010106M5600 Bolt(jf7) | Buy now |

Repair Kit 2



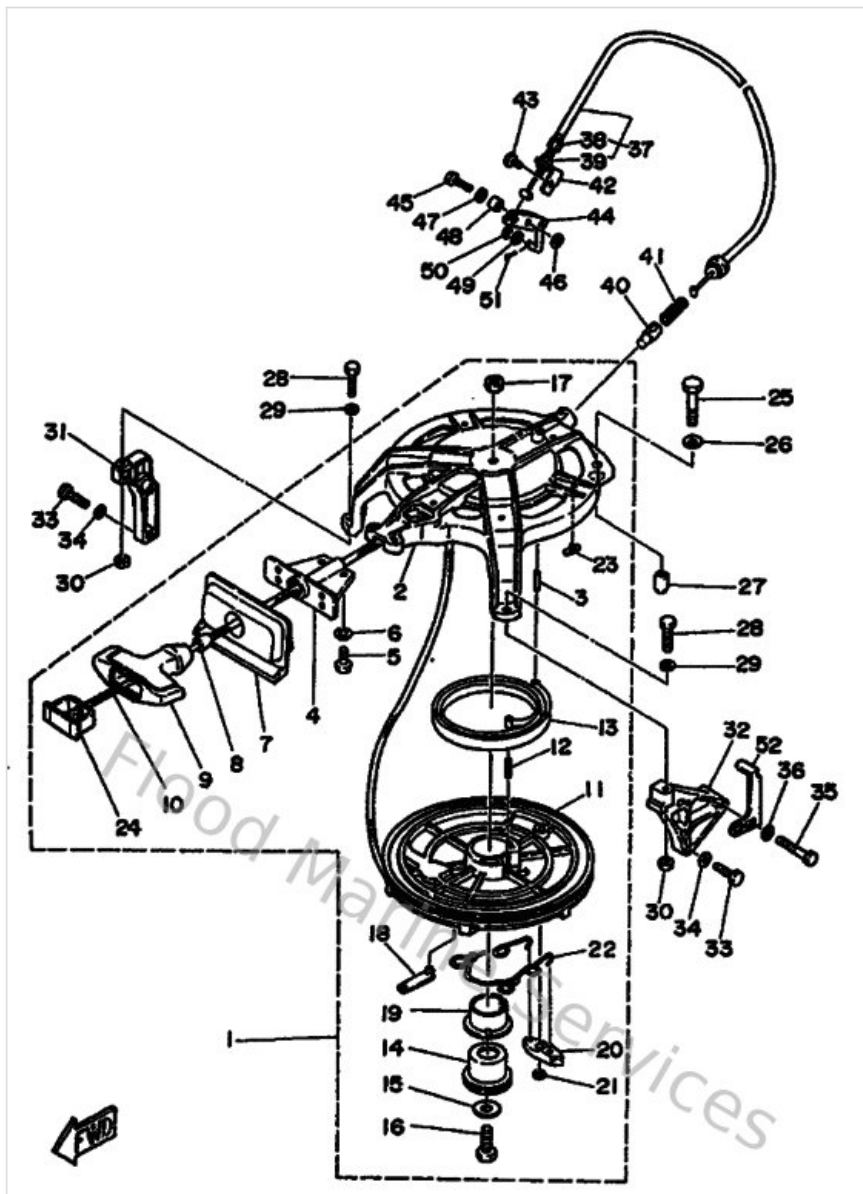
| Ref | Part | |
|-----|--|-------------------------|
| 16 | 689W44320200 Insert cartridge comp. | Buy now |
| 17 | 689443230300 Outer plate, cartridge | Buy now |
| 18 | 689443240000 Gasket, cartridge | Buy now |
| 19 | 689443520200 Impeller | Buy now |
| 21 | 664443380000 Key, woodruff | Buy now |
| 22 | 689W0078A300 Water pump repair kit | Buy now |
| 23 | 689W44326100 Insert cartridge comp. | Buy now |
| 24 | 689443670100 Rubber, water seal 3 | Buy now |
| 25 | 689443234300 Outer plate, cartridge | Buy now |

Starter



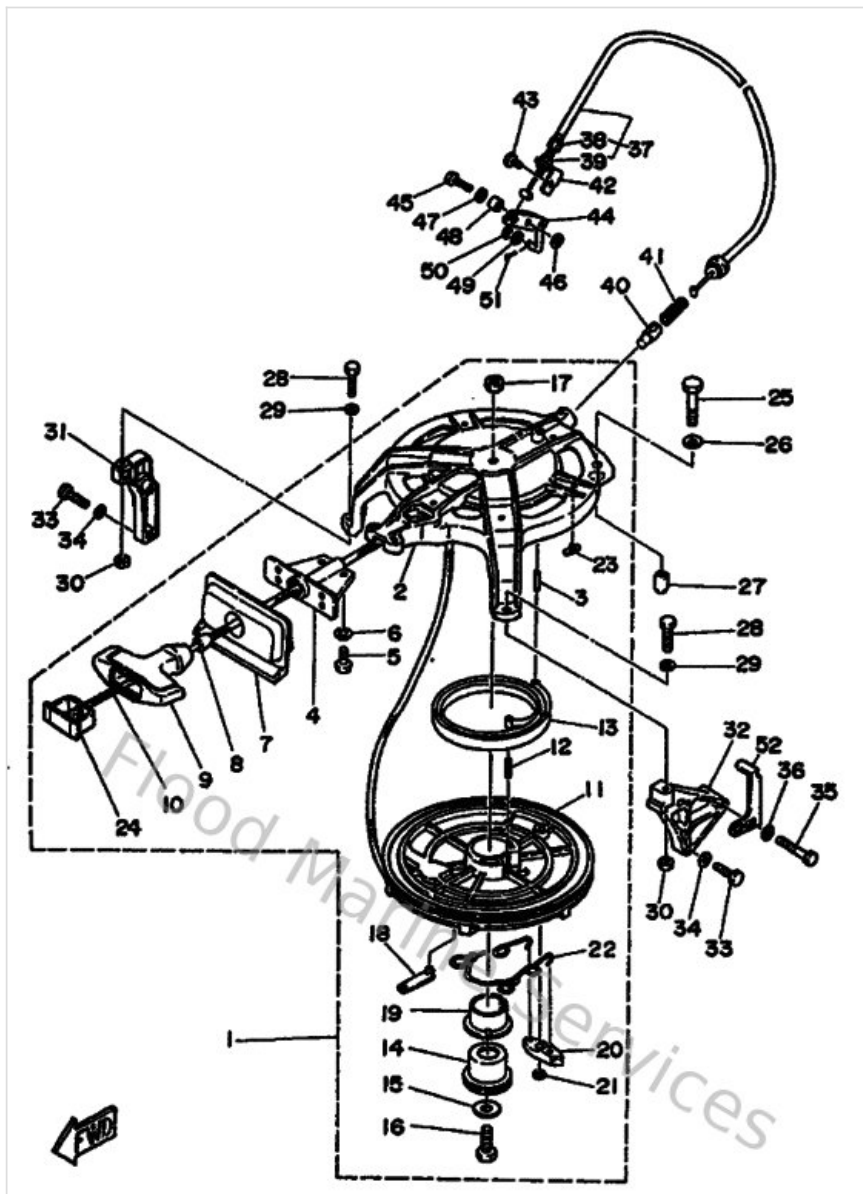
| Ref | Part | |
|-----|---|-------------------------|
| 1 | 689157100300 Starter Assembly | Buy now |
| 2 | 676157110094 Case, Starter | Buy now |
| 3 | 916904002000 Pin, spring | Buy now |
| 4 | 689157580194 Guide De Cable | Buy now |
| 5 | 970950601600 Bolt, hexagon deep recess | Buy now |
| 6 | 929900660000 Washer, plain (646) | Buy now |
| 7 | 689157620100 Seal, Rubber 2 | Buy now |
| 8 | 689157890000 Damper | Buy now |
| 9 | 689157550100 Handle, starter | Buy now |
| 13 | 9051009M0000 Spring, starter (676) | Buy now |
| 14 | 676157170000 Shaft, Starter | Buy now |
| 15 | 902010830900 Washer, Plate | Buy now |
| 16 | 970130802500 Bolt (682) | Buy now |
| 17 | 953030860000 Nut(612) | Buy now |
| 18 | 676157990100 Clip | Buy now |

Starter



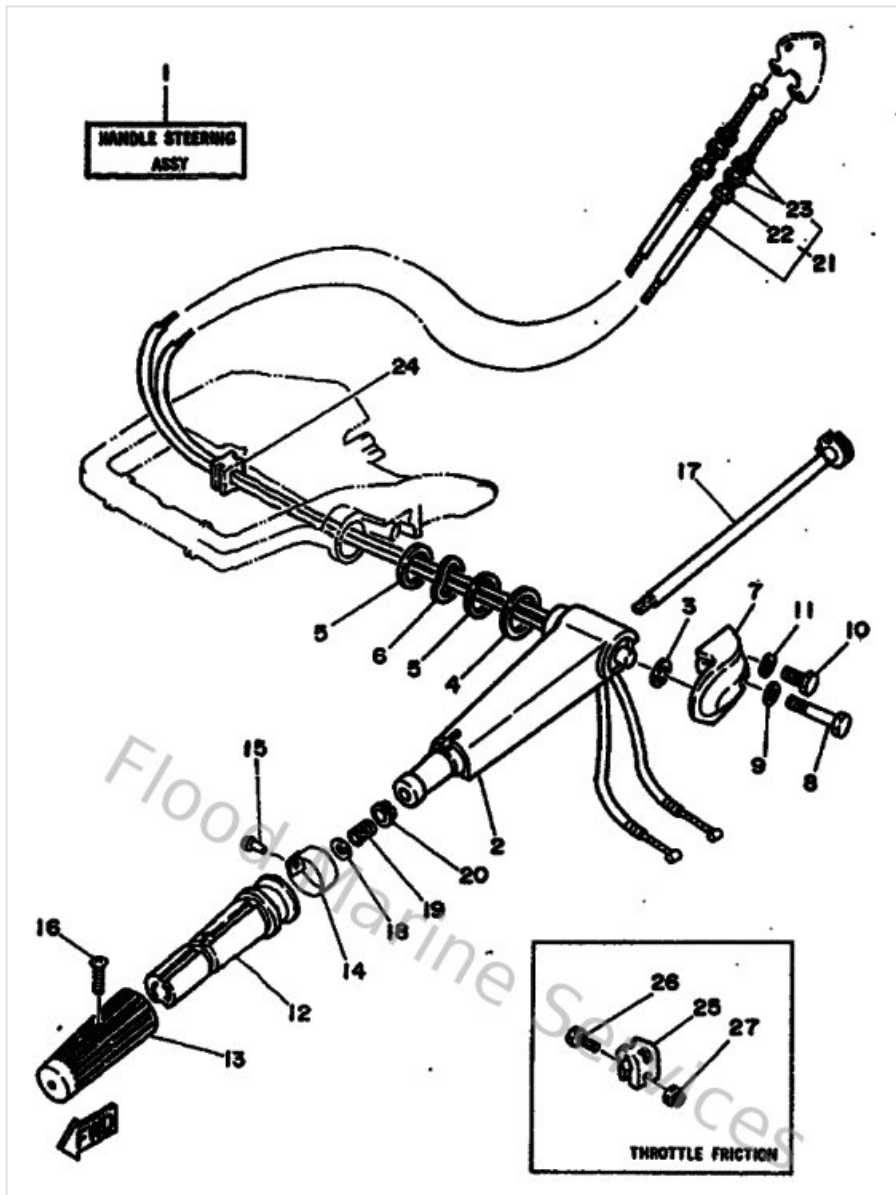
| Ref | Part | |
|-----|--|-------------------------|
| 19 | 9038635M0100 Bushing (676) | Buy now |
| 20 | 676157410300 Pawl, drive | Buy now |
| 21 | 9343006M0200 Circlip (689) | Buy now |
| 22 | 676157050000 Spring, pawl drive | Buy now |
| 23 | 676157730000 Stay 3 | Buy now |
| 24 | 6F5157790200 Cover | Buy now |
| 25 | 970900803500 Bolt(70w) | Buy now |
| 26 | 929900860000 Washer, plain (663) | Buy now |
| 27 | 995301201600 Pin, dowel | Buy now |
| 28 | 973950603000 Bolt(jf7) | Buy now |
| 30 | 953030660000 Nut(661) | Buy now |
| 32 | 656157720094 Stay 2 | Buy now |
| 33 | 9010106M2700 Bolt | Buy now |
| 35 | 973130604500 Bolt, hexagon | Buy now |
| 37 | 656157700000 Wire Comp Starter Stop | Buy now |

Starter



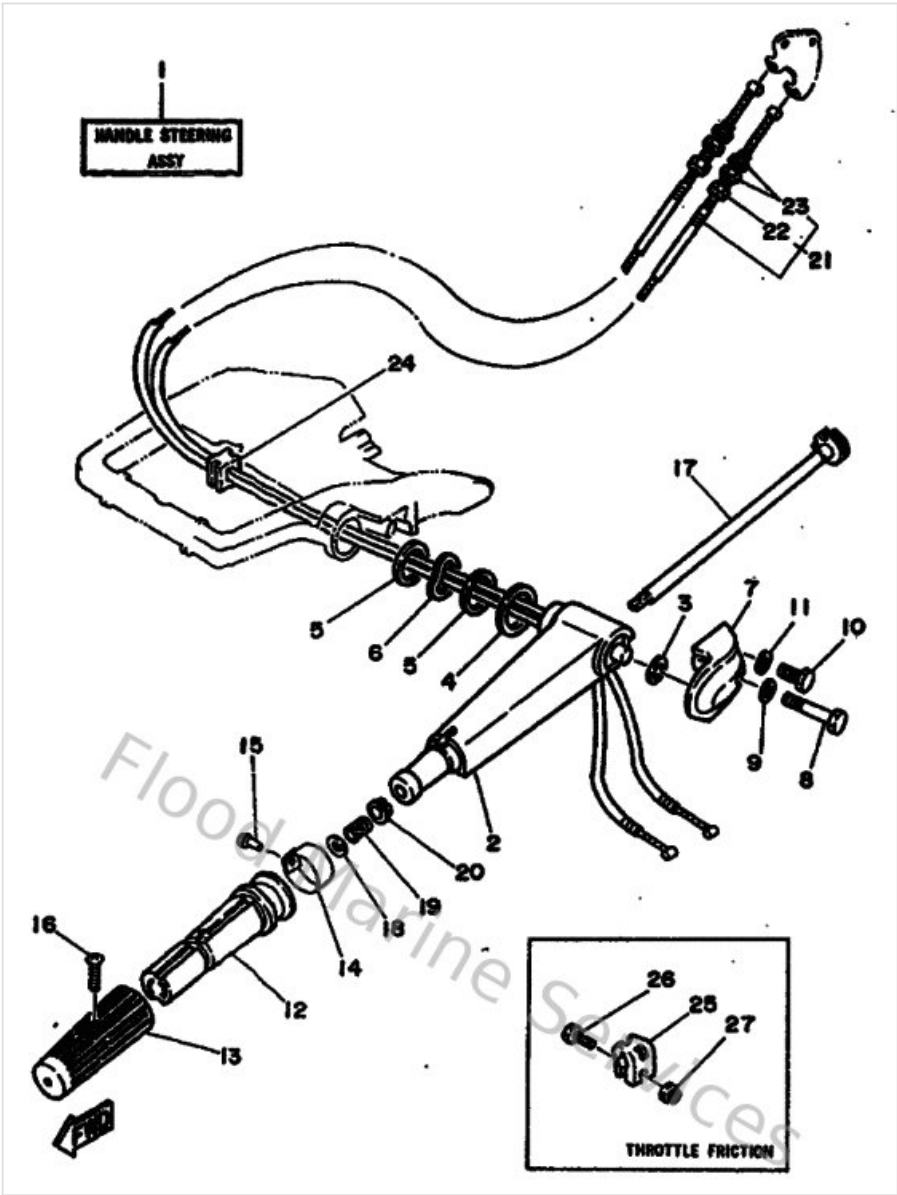
| Ref | Part | |
|-----|--|-------------------------|
| 38 | 9012306M0000 Bolt(6A9) | Buy now |
| 40 | 656157480000 Plunger, starter stop | Buy now |
| 41 | 905011022700 Spring, compreshion(656) | Buy now |
| 42 | 689157740000 Stay 4 | Buy now |
| 43 | 973130601000 Bolt | Buy now |
| 44 | 656157490000 Link comp, starter stop | Buy now |
| 45 | 973130602000 Bolt(7u8) | Buy now |
| 47 | 902060801000 Washer(656) | Buy now |
| 48 | 902060500500 Washer, wave(656) | Buy now |
| 50 | 929900560000 Washer, plain (646) | Buy now |
| 51 | 914901601000 Pin, cotter | Buy now |
| 52 | 689813320100 Plate, timing | Buy now |

Steering



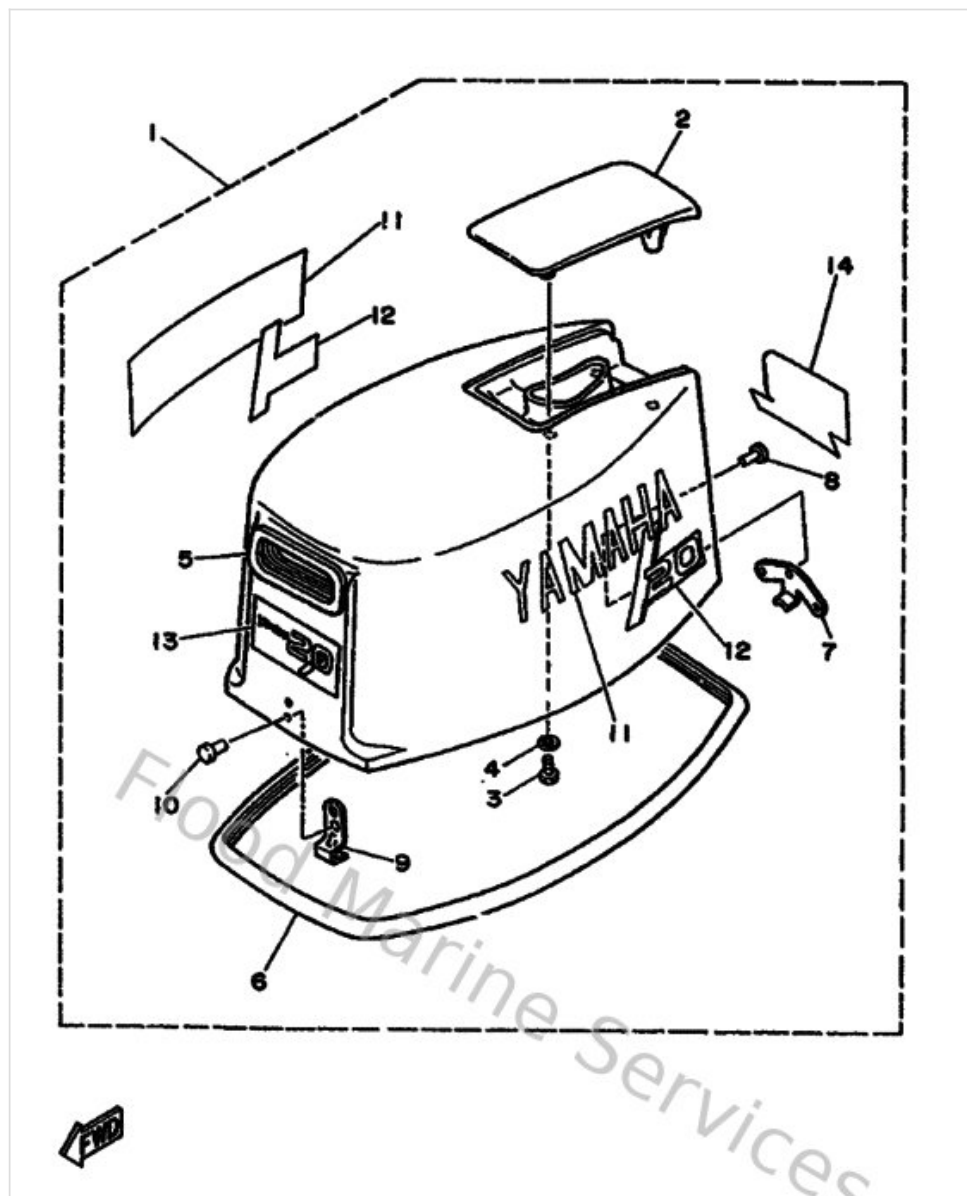
| Ref | Part | |
|-----|---|-------------------------|
| 3 | 905601407600 Spacer 648421550000 | Buy now |
| 4 | 902023404300 Spacer Handle 2 (648) | Buy now |
| 5 | 9020128M0000 Rondelle, Plate | Buy now |
| 6 | 9020628M0700 Rondelle, Ondulee | Buy now |
| 8 | 973950605000 Bolt(jf7) | Buy now |
| 9 | 929900660000 Washer, plain (646) | Buy now |
| 10 | 970800602000 Bolt(7u8) | Buy now |
| 12 | 664421190000 Grip, steering handle | Buy now |
| 13 | 6G1421770000 Rubber, handle | Buy now |
| 14 | 6A9421370100 Indicator, Throttle | Buy now |
| 15 | 9026902M0900 Rivet(6l5) | Buy now |
| 16 | 901520501100 Screw, countersunk | Buy now |
| 17 | 689421380000 Lever, throttle | Buy now |
| 18 | 929901060000 Washer, plate | Buy now |
| 19 | 905012321500 Spring (655) | Buy now |

Steering



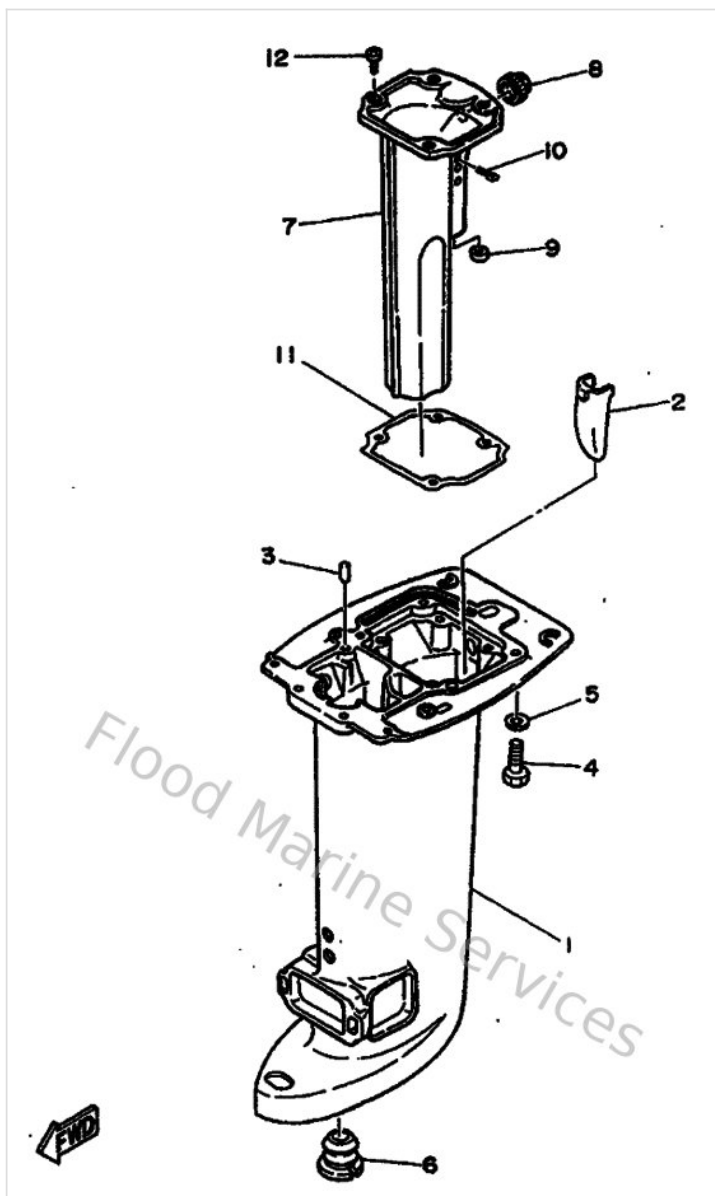
| Ref | Part | |
|-----|---|-------------------------|
| 20 | 903860803200 Bushing (650) | Buy now |
| 21 | 689263110300 Cable, throttle 1 | Buy now |
| 22 | 9012306M0000 Bolt(6A9) | Buy now |
| 23 | 901700618300 Nut, hexagon(664) | Buy now |
| 24 | 904801215600 Grommet | Buy now |
| 25 | 656421260100 Piece, friction | Buy now |
| 26 | 973950602000 Bolt(7u8) | Buy now |
| 27 | 901850606200 Nut selflocking (656) | Buy now |

Top Cowling



| Ref | Part | |
|-----|---|-------------------------|
| 3 | 973950601200 Bolt(gh1) | Buy now |
| 4 | 929900660000 Washer, plain (646) | Buy now |
| 5 | 689157610000 Seal 1 | Buy now |
| 6 | 6G0426150000 Seal | Buy now |
| 8 | 9026604M0100 Rivet (689) | Buy now |
| 9 | 6G0426510200 Hook | Buy now |

Upper Casing



| Ref | Part | |
|-----|--|-------------------------|
| 4 | 973950803000 Bolt, hexagon (fj1) | Buy now |
| 5 | 929900860000 Washer, plain (663) | Buy now |
| 6 | 689451270000 Seal | Buy now |
| 7 | 664411310100 Manifold, ext. 1 | Buy now |
| 10 | 914903003000 Pin, cotter | Buy now |
| 11 | 66441134A000 Gasket, exhaust manifold | Buy now |
| 12 | 925800601600 Screw pan head | Buy now |

Disclaimer

This document is provided for convenience only. It is **not** an official Yamaha publication and is **not supplied, endorsed, or approved** by Yamaha Motor Co., Ltd.

Reasonable efforts are made to keep information accurate; however diagrams, part references, supersessions, descriptions, and applicability may contain errors or omissions. Specifications and part availability may change without notice.

You are responsible for confirming the correct parts for your engine (including model code, year, serial range, and any superseded part numbers) before ordering or fitting.