



# Yamaha 25BMH 2003

## Parts Manual

[www.floodmarine.co.uk](http://www.floodmarine.co.uk)

+44 2882 246 539

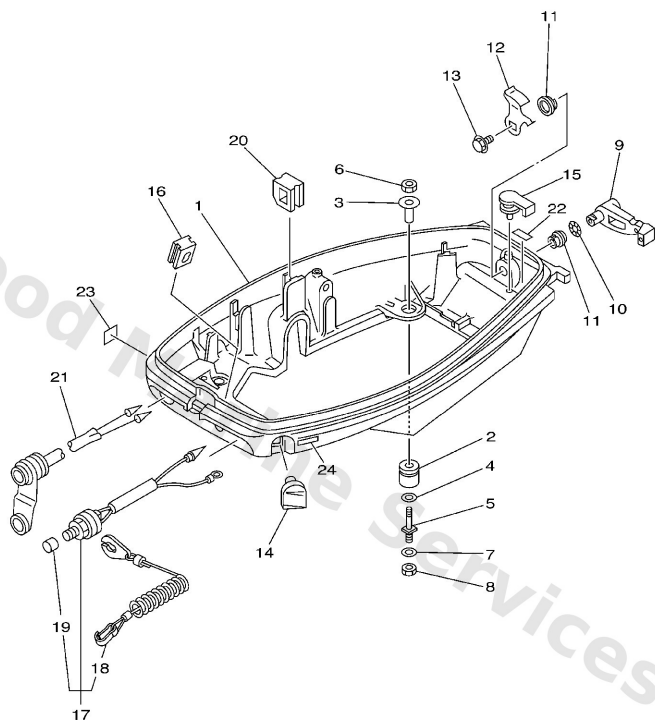
Authorised Yamaha Dealers



# Contents

<b>BOTTOM COWLING</b>	3
<b>BRACKET 1</b>	5
<b>BRACKET 2</b>	8
<b>CARBURETOR</b>	11
<b>CONTROL</b>	13
<b>CRANKSHAFT. PISTON</b>	16
<b>CYLINDER. CRANKCASE</b>	18
<b>ELECTRICAL 1</b>	21
<b>ELECTRICAL 2</b>	23
<b>FUEL</b>	24
<b>FUEL TANK</b>	27
<b>GENERATOR</b>	28
<b>INTAKE</b>	30
<b>LOWER CASING. DRIVE 1</b>	32
<b>LOWER CASING. DRIVE 2</b>	37
<b>REMOTE CONTROL ATTACHMENT</b>	39
<b>REPAIR KIT 1</b>	41
<b>REPAIR KIT 2</b>	43
<b>STARTER</b>	45
<b>STEERING</b>	48
<b>TOP COWLING</b>	50
<b>UPPER CASING</b>	51

## Bottom Cowling

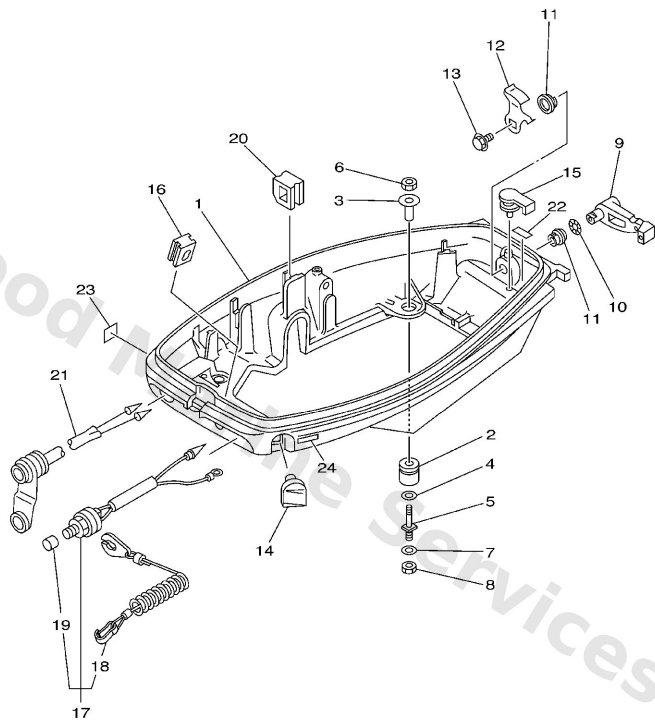


69R3664-3130

**C4**

Ref	Part	
1	<a href="#">689-42711-04-4D</a> Cowling, bottom 1	<a href="#">Buy now</a>
2	<a href="#">90480-15M06</a> Grommet (689)	<a href="#">Buy now</a>
3	<a href="#">90387-08M25</a> Collar (689)	<a href="#">Buy now</a>
4	<a href="#">90201-08M87</a> Washer (6g0)	<a href="#">Buy now</a>
5	<a href="#">6G0-42796-00</a> Bolt 1	<a href="#">Buy now</a>
6	<a href="#">95380-08700</a> Nut(661)	<a href="#">Buy now</a>
7	<a href="#">92995-08600</a> Washer, plain (663)	<a href="#">Buy now</a>
9	<a href="#">689-42815-00</a> Lever, clamp 1	<a href="#">Buy now</a>
10	<a href="#">90206-12052</a> Washer, wave (666)	<a href="#">Buy now</a>
11	<a href="#">90386-12069</a> Bush(666)	<a href="#">Buy now</a>
12	<a href="#">689-42816-00</a> Lever, clamp 2	<a href="#">Buy now</a>
13	<a href="#">90119-06M73</a> Bolt(gh1)	<a href="#">Buy now</a>
14	<a href="#">689-42725-01</a> Grommet	<a href="#">Buy now</a>
15	<a href="#">647-42523-00</a> Spacer, friction	<a href="#">Buy now</a>
16	<a href="#">61N-26326-00</a> Grommet	<a href="#">Buy now</a>

## Bottom Cowling

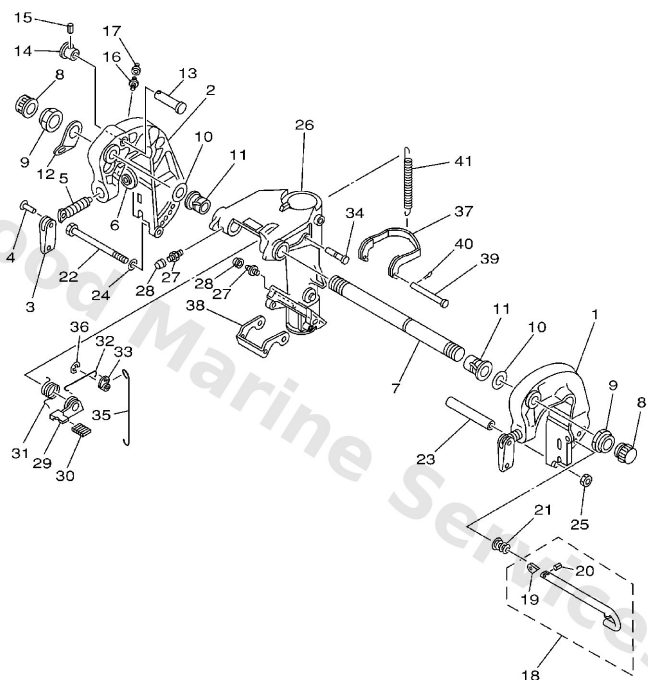


69R3664-3130

**C4**

Ref	Part	
17	<a href="#">6E9-82575-02</a> Engine stop switch assembly	<a href="#">Buy now</a>
18	<a href="#">682-82556-00</a> Lanyard, stop switch	<a href="#">Buy now</a>
19	<a href="#">689-8257Y-00</a> Cap	<a href="#">Buy now</a>
20	<a href="#">90480-17M08</a> Grommet (689)	<a href="#">Buy now</a>
21	<a href="#">682-84381-00</a> 2p concent 1	<a href="#">Buy now</a>
22	<a href="#">6E7-42791-10</a> Mark 1	<a href="#">Buy now</a>
23	<a href="#">6A1-28176-00</a> Label Caution	<a href="#">Buy now</a>
24	<a href="#">6E3-8257H-00</a> Plate Mark	<a href="#">Buy now</a>

# Bracket 1

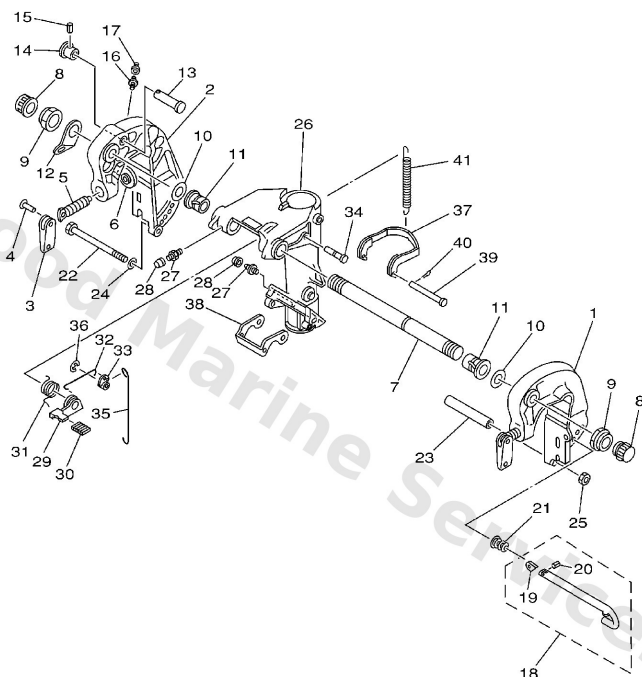


69R0664-1170

**D2**

Ref	Part	
1	<a href="#">689-43111-03-4D</a> Bracket, clamp 1	<a href="#">Buy now</a>
2	<a href="#">689-43112-02-4D</a> Bracket, clamp 2	<a href="#">Buy now</a>
3	<a href="#">6E0-43118-01</a> Handle, transom clamp	<a href="#">Buy now</a>
4	<a href="#">90243-04M01</a> Pin(6a1)	<a href="#">Buy now</a>
5	<a href="#">90149-14030</a> Screw, transom clamp	<a href="#">Buy now</a>
6	<a href="#">648-43114-01</a> Pad, transom clamp	<a href="#">Buy now</a>
7	<a href="#">6J8-43131-01</a> Bolt, clamp bracket	<a href="#">Buy now</a>
8	<a href="#">6G5-43145-01</a> Cap, clamp bracket	<a href="#">Buy now</a>
9	<a href="#">90185-22043</a> Nut, self-locking	<a href="#">Buy now</a>
10	<a href="#">90201-22M03</a> Washer, plate(64j)	<a href="#">Buy now</a>
11	<a href="#">90386-22M67</a> Bush(6a9)	<a href="#">Buy now</a>
12	<a href="#">6J8-43113-01</a> Plate, clamp bracket	<a href="#">Buy now</a>
13	<a href="#">689-43191-00</a> Shaft, stopper	<a href="#">Buy now</a>
14	<a href="#">689-43192-01</a> Knob, stopper	<a href="#">Buy now</a>
15	<a href="#">91690-30016</a> Pin, spring	<a href="#">Buy now</a>

# Bracket 1

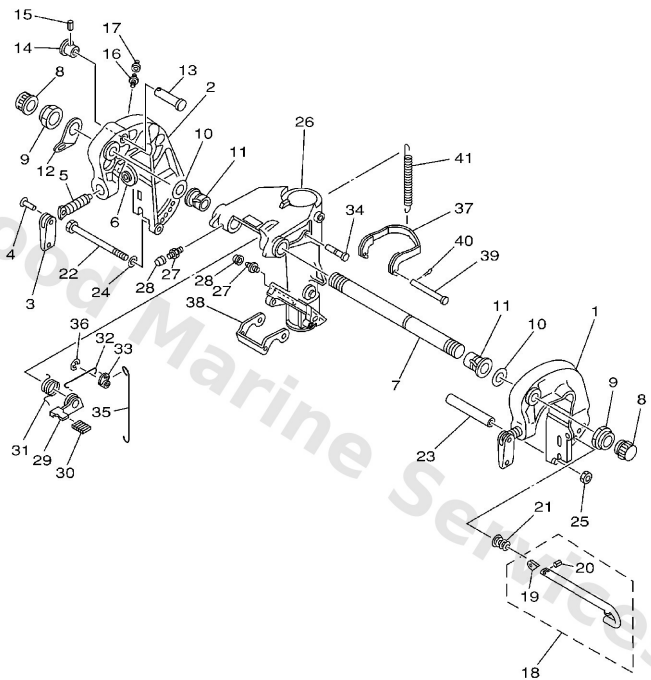


69R0664-1170

**D2**

Ref	Part	
16	<a href="#">93700-06M03</a> Nipple, grease(6a1)	<a href="#">Buy now</a>
17	<a href="#">663-45119-00</a> Cap, grease nipple AP	<a href="#">Buy now</a>
18	<a href="#">689-43160-00</a> Tilt rod assembly	<a href="#">Buy now</a>
19	<a href="#">689-43165-00</a> Plate, tilt lock	<a href="#">Buy now</a>
20	<a href="#">91690-30008</a> Pin. spring(656)	<a href="#">Buy now</a>
21	<a href="#">90502-10M07</a> Spring, conical(6k3)	<a href="#">Buy now</a>
22	<a href="#">90101-08339</a> Bolt, hexagon (656)	<a href="#">Buy now</a>
23	<a href="#">90387-08M03</a> Collar	<a href="#">Buy now</a>
24	<a href="#">92995-08600</a> Washer, plain (663)	<a href="#">Buy now</a>
25	<a href="#">95380-08600</a> Nut (661)	<a href="#">Buy now</a>
26	<a href="#">689-43311-03-4D</a> Bracket, swivel 1	<a href="#">Buy now</a>
29	<a href="#">689-43631-00</a> Lever, tilt 1	<a href="#">Buy now</a>
30	<a href="#">689-43633-00</a> Cover, tilt lever	<a href="#">Buy now</a>
31	<a href="#">689-43643-00</a> Spring, torsion	<a href="#">Buy now</a>
32	<a href="#">689-43616-00</a> Rod, tilt lock 1	<a href="#">Buy now</a>

# Bracket 1

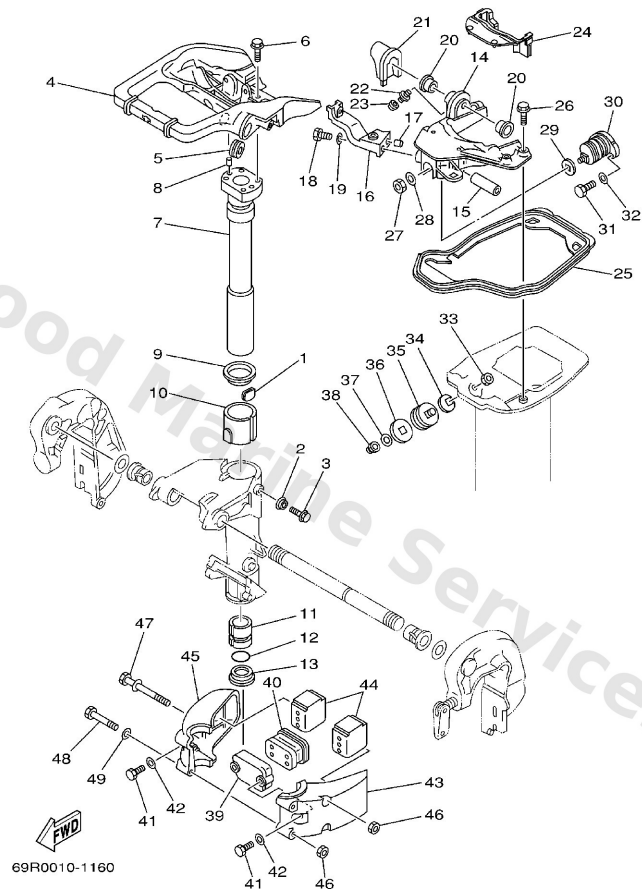


69R0664-1170

**D2**

Ref	Part	
33	<a href="#">648-43642-00</a> Lever, tilt 2	<a href="#">Buy now</a>
34	<a href="#">90249-06M22</a> Pin(6a9)	<a href="#">Buy now</a>
35	<a href="#">648-43617-00</a> Rod, tilt lock 2	<a href="#">Buy now</a>
36	<a href="#">99080-05600</a> Circlip(22k)	<a href="#">Buy now</a>
37	<a href="#">689-43614-01</a> Plate, tilt lock	<a href="#">Buy now</a>
38	<a href="#">648-43615-00</a> Plate, tilt lock 2	<a href="#">Buy now</a>
39	<a href="#">90240-05047</a> Pin with hole(655)	<a href="#">Buy now</a>
40	<a href="#">91490-16010</a> Pin, cotter	<a href="#">Buy now</a>
41	<a href="#">90506-30M27</a> Spring, tension(6a4)	<a href="#">Buy now</a>

## Bracket 2

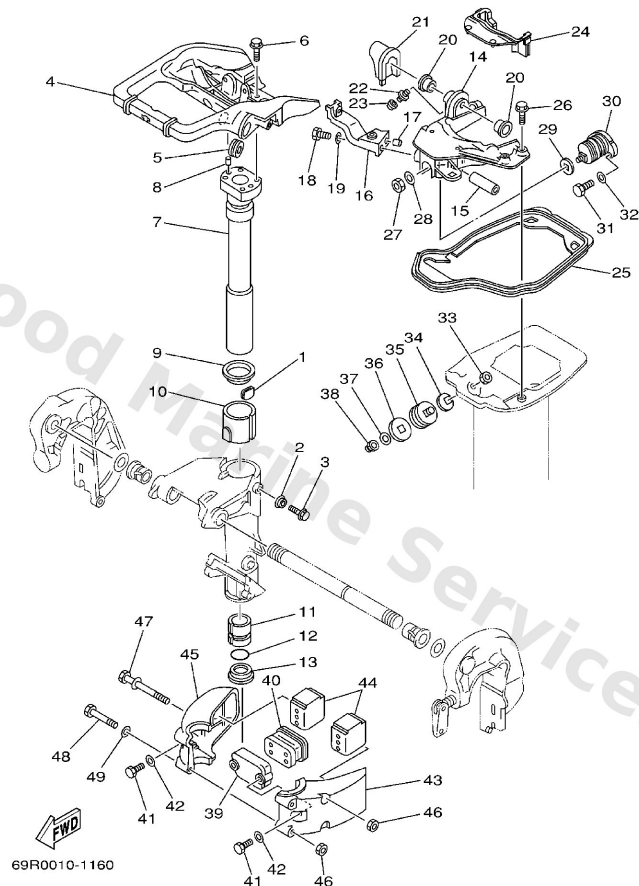


**D4**

Ref	Part	
1	<a href="#">648-42528-00</a> Plate, friction	<a href="#">Buy now</a>
2	<a href="#">689-43373-01</a> Seal, damper	<a href="#">Buy now</a>
3	<a href="#">90105-06M18</a> Bolt (689)	<a href="#">Buy now</a>
4	<a href="#">69P-42511-00-4D</a> Bracket, steering	<a href="#">Buy now</a>
5	<a href="#">90480-29045</a> Grommet 648425510000	<a href="#">Buy now</a>
6	<a href="#">90105-06M07</a> Bolt (689)	<a href="#">Buy now</a>
7	<a href="#">689-42521-00-94</a> Shaft, steering pivot	<a href="#">Buy now</a>
8	<a href="#">93608-12063</a> Pin, dowel (626)	<a href="#">Buy now</a>
9	<a href="#">90209-47016</a> Washer 648425350000	<a href="#">Buy now</a>
10	<a href="#">90386-47M22</a> Bushing (695)	<a href="#">Buy now</a>
11	<a href="#">90386-38090</a> Bushing (664)	<a href="#">Buy now</a>
12	<a href="#">93210-37160</a> O-ring (6g8)	<a href="#">Buy now</a>
13	<a href="#">90386-38022</a> Bush(648-42539-00)	<a href="#">Buy now</a>
14	<a href="#">69P-44518-00-94</a> Bracket comp.	<a href="#">Buy now</a>
15	<a href="#">90387-10M39</a> Collar (689)	<a href="#">Buy now</a>



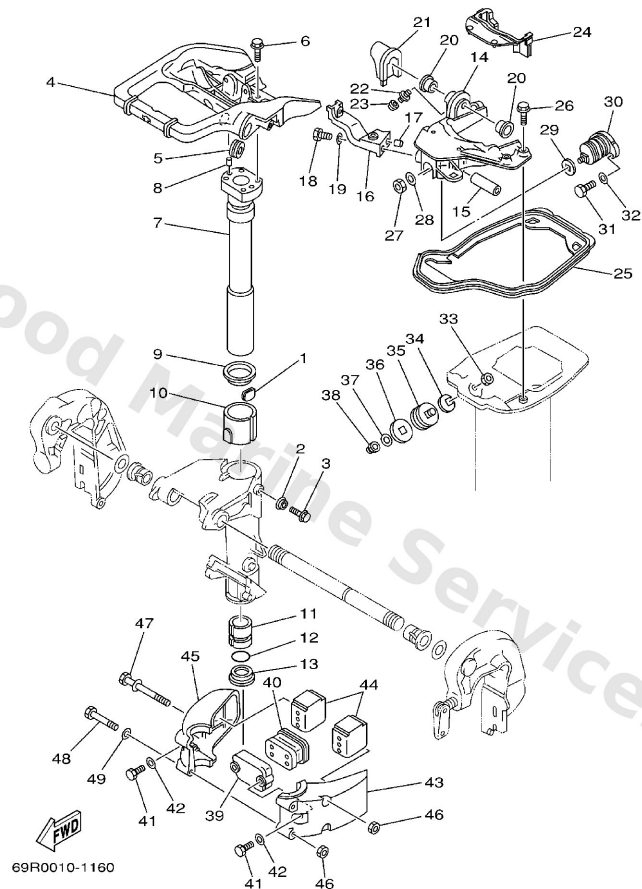
## Bracket 2



**D4**

Ref	Part	
16	<a href="#">648-44519-00-94</a> Bracket	<a href="#">Buy now</a>
17	<a href="#">93606-12019</a> Pin, dowel (614)	<a href="#">Buy now</a>
18	<a href="#">97095-06018</a> Bolt (fj0)	<a href="#">Buy now</a>
19	<a href="#">92995-06600</a> Washer, plain (646)	<a href="#">Buy now</a>
20	<a href="#">90381-12M01</a> Bush, solid(6a4)	<a href="#">Buy now</a>
21	<a href="#">689-42718-00</a> Rubber, seal 3	<a href="#">Buy now</a>
22	<a href="#">93700-06M03</a> Nipple, grease(6a1)	<a href="#">Buy now</a>
23	<a href="#">663-45119-00</a> Cap, grease nipple AP	<a href="#">Buy now</a>
24	<a href="#">69P-42717-00</a> Rubber, seal 2	<a href="#">Buy now</a>
25	<a href="#">69P-42716-00</a> Rubber seal 1	<a href="#">Buy now</a>
26	<a href="#">90105-06M08</a> Bolt (689)	<a href="#">Buy now</a>
27	<a href="#">90170-10M42</a> Nut	<a href="#">Buy now</a>
28	<a href="#">92990-10200</a> 958-69527-00 washer, plain	<a href="#">Buy now</a>
29	<a href="#">648-44591-A0</a> Gasket	<a href="#">Buy now</a>
30	<a href="#">689-44516-00</a> Mount damper, upper front	<a href="#">Buy now</a>

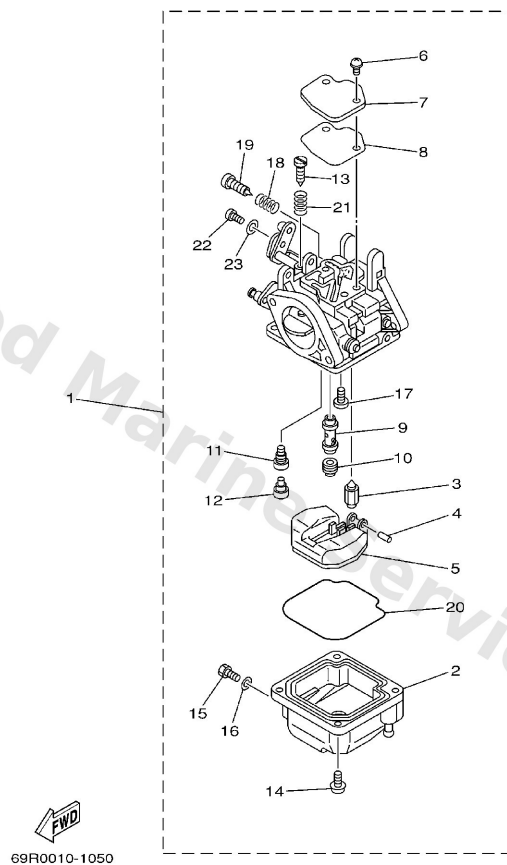
## Bracket 2



**D4**

Ref	Part	
31	<a href="#">97095-06020</a> Bolt(7u8)	<a href="#">Buy now</a>
35	<a href="#">664-44514-00-94</a> Mount damper, upper side	<a href="#">Buy now</a>
36	<a href="#">664-44591-A0</a> Gasket	<a href="#">Buy now</a>
38	<a href="#">90176-10M01</a> Nut, crown	<a href="#">Buy now</a>
39	<a href="#">689-44553-00-94</a> Cover, lower mount	<a href="#">Buy now</a>
40	<a href="#">689-44557-00</a> Mount damper, lower front	<a href="#">Buy now</a>
41	<a href="#">97075-08025</a> Bolt, hexagon deep recess	<a href="#">Buy now</a>
42	<a href="#">92995-08600</a> Washer, plain (663)	<a href="#">Buy now</a>
43	<a href="#">689-44551-01-4D</a> Housing, lower mount rubber 1	<a href="#">Buy now</a>
44	<a href="#">689-44555-00</a> Mount damper, lower side	<a href="#">Buy now</a>
45	<a href="#">689-44552-01-4D</a> Housing, lower mount rubber 2	<a href="#">Buy now</a>
46	<a href="#">95380-08600</a> Nut (661)	<a href="#">Buy now</a>
47	<a href="#">90119-08M03</a> Bolt (689)	<a href="#">Buy now</a>
48	<a href="#">97095-08065</a> Bolt (gk02)	<a href="#">Buy now</a>

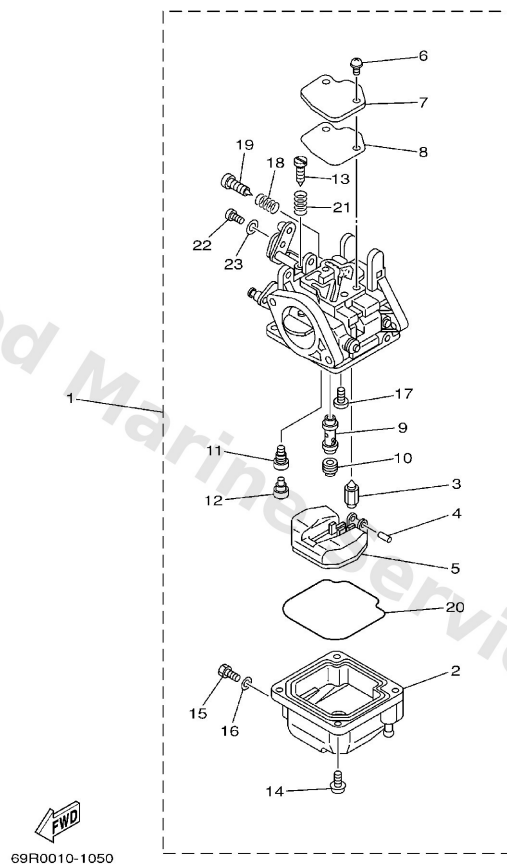
# Carburetor



**B2**

Ref	Part	
1	<a href="#">69P-14301-00</a> Carburetor assembly 1	<a href="#">Buy now</a>
2	<a href="#">61N-14381-00</a> Body, float chamber	<a href="#">Buy now</a>
3	<a href="#">61N-14392-00</a> Valve, needle	<a href="#">Buy now</a>
4	<a href="#">6E5-14386-01</a> Pin, float	<a href="#">Buy now</a>
5	<a href="#">6L2-14385-00</a> Float	<a href="#">Buy now</a>
6	<a href="#">97980-04110</a> Screw, pan head (e56)	<a href="#">Buy now</a>
7	<a href="#">6L2-14157-00</a> Cover, mixing	<a href="#">Buy now</a>
8	<a href="#">6L2-14399-00</a> Gasket	<a href="#">Buy now</a>
9	<a href="#">61N-14341-00</a> Nozzle, main	<a href="#">Buy now</a>
10	<a href="#">61N-14343-65</a> Jet, main (#130)	<a href="#">Buy now</a>
11	<a href="#">6L2-14342-34</a> Jet, pilot (# 68)	<a href="#">Buy now</a>
12	<a href="#">50M-14355-00</a> Plug	<a href="#">Buy now</a>
13	<a href="#">664-14321-01</a> Screw, throttle	<a href="#">Buy now</a>
14	<a href="#">97980-04112</a> Screw, pan head (686)	<a href="#">Buy now</a>
15	<a href="#">677-14383-01</a> Screw, drain	<a href="#">Buy now</a>

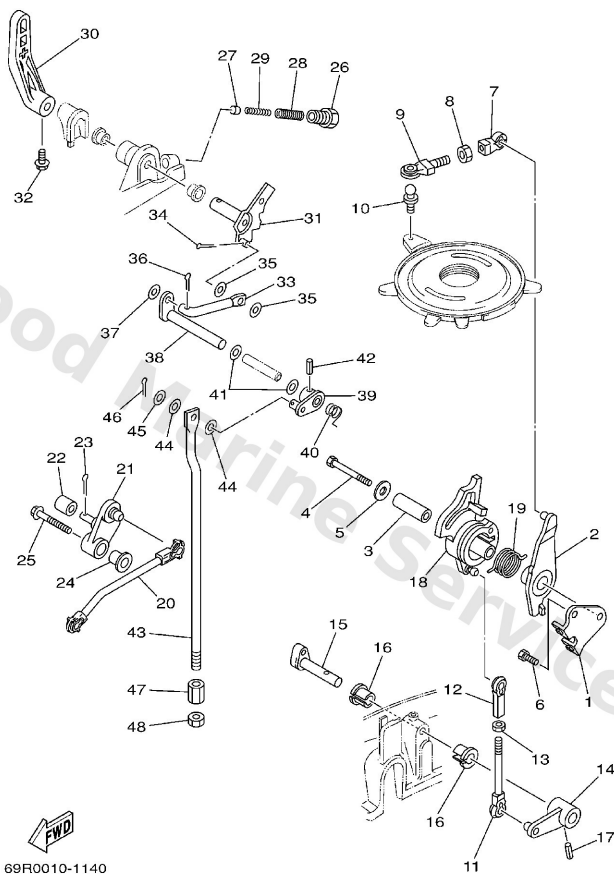
# Carburetor



**B2**

Ref	Part	
16	<a href="#">6L2-14398-00</a> Gasket	<a href="#">Buy now</a>
17	<a href="#">98980-04006</a> Screw, bind(6l2)	<a href="#">Buy now</a>
18	<a href="#">646-14212-01</a> Spring, pilot adjusting	<a href="#">Buy now</a>
19	<a href="#">61N-14323-00</a> Screw, air adjusting	<a href="#">Buy now</a>
20	<a href="#">6L2-14384-00</a> Gasket, float chamber	<a href="#">Buy now</a>
21	<a href="#">61N-14212-00</a> Spring, pilot adjusting	<a href="#">Buy now</a>
22	<a href="#">97890-05006</a> Screw,panhead (eg9)	<a href="#">Buy now</a>
23	<a href="#">62Y-14597-00</a> Washer	<a href="#">Buy now</a>

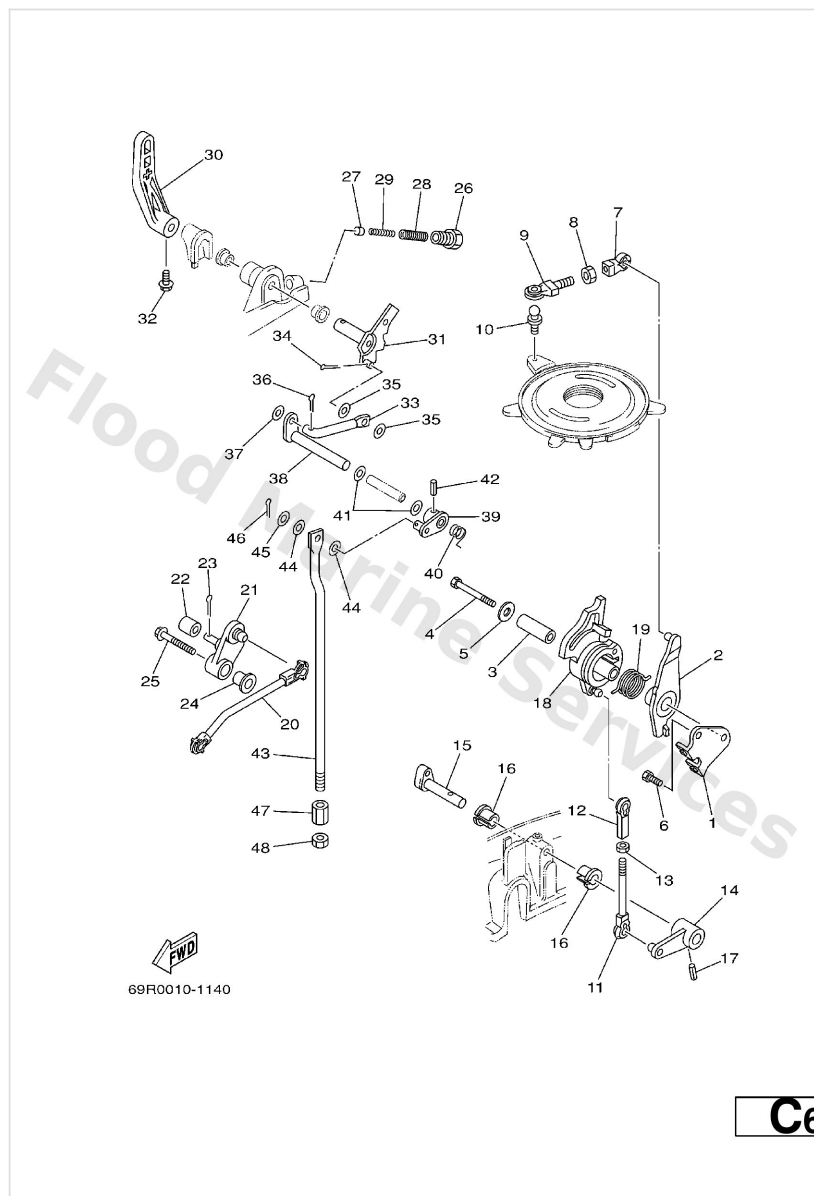
# Control



**C6**

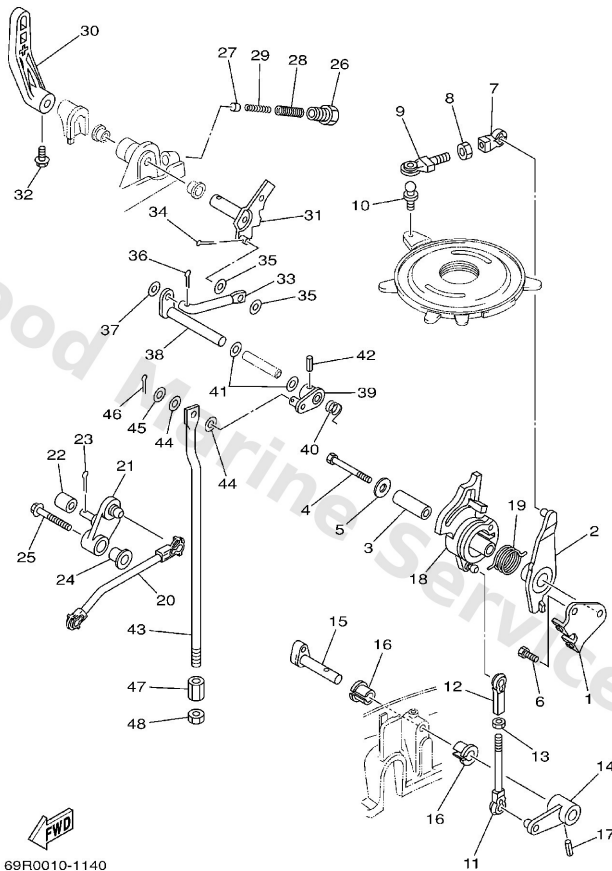
Ref	Part	
1	<a href="#">69P-14497-00</a> Stay, throttle wire	<a href="#">Buy now</a>
2	<a href="#">69P-41631-00</a> Lever, magneto control	<a href="#">Buy now</a>
3	<a href="#">90387-06M59</a> Collar (6h3)	<a href="#">Buy now</a>
4	<a href="#">97095-06045</a> Bolt, hexagon	<a href="#">Buy now</a>
5	<a href="#">90201-06416</a> Washer, plate(663)	<a href="#">Buy now</a>
6	<a href="#">97095-06012</a> Bolt(gh1)	<a href="#">Buy now</a>
7	<a href="#">662-41237-01</a> Joint, link	<a href="#">Buy now</a>
8	<a href="#">95380-05700</a> Nut (656)	<a href="#">Buy now</a>
9	<a href="#">679-41241-01</a> Rod, link	<a href="#">Buy now</a>
10	<a href="#">663-85518-00</a> Joint, ball	<a href="#">Buy now</a>
11	<a href="#">682-41238-01</a> Joint, link	<a href="#">Buy now</a>
12	<a href="#">682-41237-00</a> Joint, link 2	<a href="#">Buy now</a>
13	<a href="#">95380-05600</a> Nut, hexagon (663)	<a href="#">Buy now</a>
14	<a href="#">69P-42157-00-94</a> Lever, throttle	<a href="#">Buy now</a>
15	<a href="#">656-42153-00-94</a> Shaft, throttle control	<a href="#">Buy now</a>

# Control



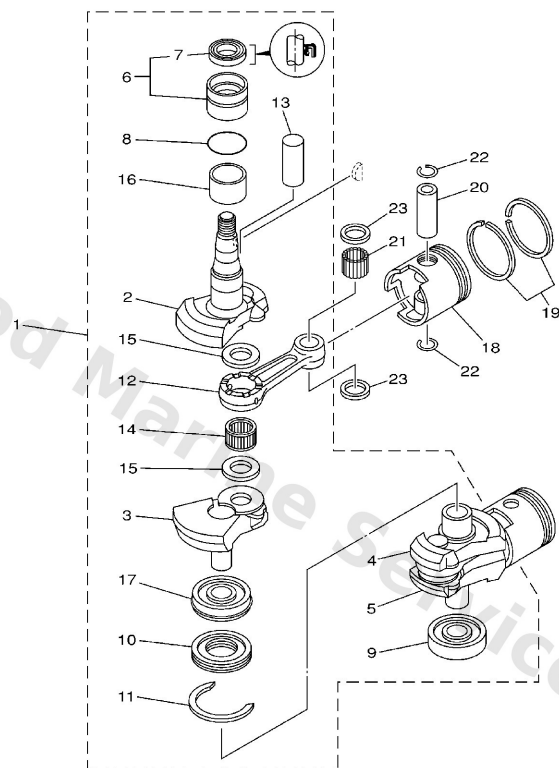
Ref	Part	
16	<a href="#">90386-10009</a> Bushing 6484418600	<a href="#">Buy now</a>
17	<a href="#">91690-40018</a> Pin spring(664)	<a href="#">Buy now</a>
18	<a href="#">69P-41213-00</a> Cam, accel.	<a href="#">Buy now</a>
19	<a href="#">69P-42167-00</a> Spring 1	<a href="#">Buy now</a>
20	<a href="#">69P-41241-00</a> Rod, link	<a href="#">Buy now</a>
21	<a href="#">69P-42154-00</a> Lever, throttle control	<a href="#">Buy now</a>
22	<a href="#">62Y-42171-00</a> Bushing	<a href="#">Buy now</a>
23	<a href="#">91490-16010</a> Pin, cotter	<a href="#">Buy now</a>
24	<a href="#">90387-06M60</a> Collar (6h3)	<a href="#">Buy now</a>
25	<a href="#">90119-06M17</a> Bolt, with washer	<a href="#">Buy now</a>
26	<a href="#">664-42715-00</a> Bushing 2	<a href="#">Buy now</a>
27	<a href="#">664-44167-01</a> Plunger, shift cam	<a href="#">Buy now</a>
28	<a href="#">90501-14M07</a> Spring, compression (664)	<a href="#">Buy now</a>
29	<a href="#">90501-09M08</a> Spring, compression (664)	<a href="#">Buy now</a>
30	<a href="#">689-44111-01-4D</a> Handle, gear shift	<a href="#">Buy now</a>

# Control



Ref	Part	
31	<a href="#">664-44113-01</a> Cam plate, handle	<a href="#">Buy now</a>
32	<a href="#">90105-06M07</a> Bolt (689)	<a href="#">Buy now</a>
33	<a href="#">664-44142-00</a> Joint	<a href="#">Buy now</a>
35	<a href="#">90202-06007</a> Washer plate 626441880000	<a href="#">Buy now</a>
36	<a href="#">91490-12010</a> Pin, cotter (6g8)	<a href="#">Buy now</a>
37	<a href="#">92990-05600</a> Washer, plain (646)	<a href="#">Buy now</a>
38	<a href="#">689-44121-01</a> Lever, shift rod 1	<a href="#">Buy now</a>
39	<a href="#">689-44125-00</a> Lever, shift rod 2	<a href="#">Buy now</a>
40	<a href="#">90508-14M13</a> Spring (689)	<a href="#">Buy now</a>
41	<a href="#">90202-10024</a> Washer plate 648441880000	<a href="#">Buy now</a>
42	<a href="#">91690-40016</a> Pin, spring (648)	<a href="#">Buy now</a>
43	<a href="#">61N-44143-00</a> Rod, shift	<a href="#">Buy now</a>
46	<a href="#">91490-20010</a> Pin, cotter	<a href="#">Buy now</a>
47	<a href="#">61N-44146-00</a> Connector, shift rod	<a href="#">Buy now</a>
48	<a href="#">95380-06600</a> Nut(661)	<a href="#">Buy now</a>

# Crankshaft. Piston



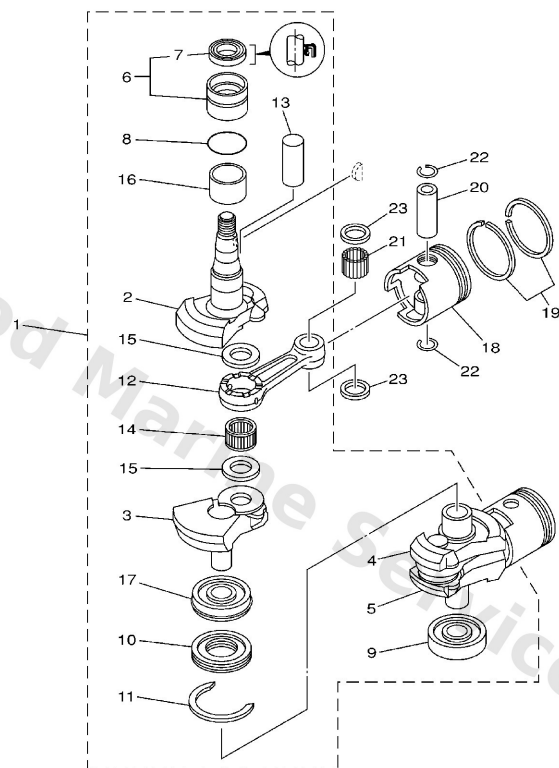
69R0010-1030

A7

Ref	Part	
1	<a href="#">69P-11400-00</a> Crankshaft assembly	<a href="#">Buy now</a>
2	<a href="#">69P-11412-00</a> Crank 1	<a href="#">Buy now</a>
3	<a href="#">61N-11422-00</a> Crank 2	<a href="#">Buy now</a>
4	<a href="#">61N-11432-00</a> Crank 3	<a href="#">Buy now</a>
5	<a href="#">61N-11442-00</a> Crank 4	<a href="#">Buy now</a>
6	<a href="#">93399-99951</a> Bearing	<a href="#">Buy now</a>
7	<a href="#">93102-32M07</a> Oil seal (697)	<a href="#">Buy now</a>
8	<a href="#">93210-46M16</a> O-ring (688)	<a href="#">Buy now</a>
9	<a href="#">93306-305U3</a> Bearing(6j8)	<a href="#">Buy now</a>
10	<a href="#">61N-11515-00</a> Seal, labyrinth 1	<a href="#">Buy now</a>
11	<a href="#">93440-62057</a> Cir clip (656)	<a href="#">Buy now</a>
12	<a href="#">689-11651-00</a> Rod, connecting	<a href="#">Buy now</a>
13	<a href="#">689-11681-01</a> Pin, crank	<a href="#">Buy now</a>
14	<a href="#">93310-62406</a> Bearing	<a href="#">Buy now</a>
15	<a href="#">90209-24M03</a> Washer, plate (689)	<a href="#">Buy now</a>



# Crankshaft. Piston

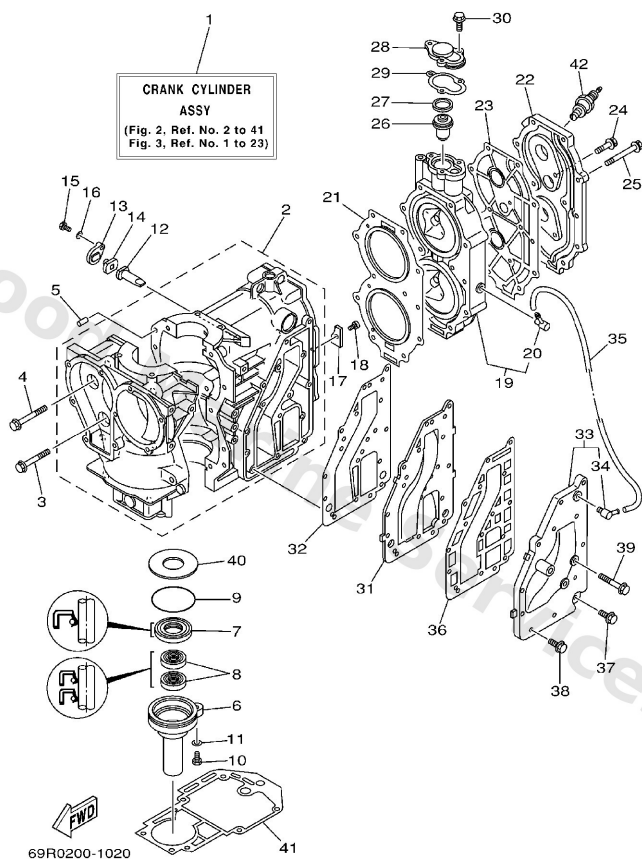


69R0010-1030

A7

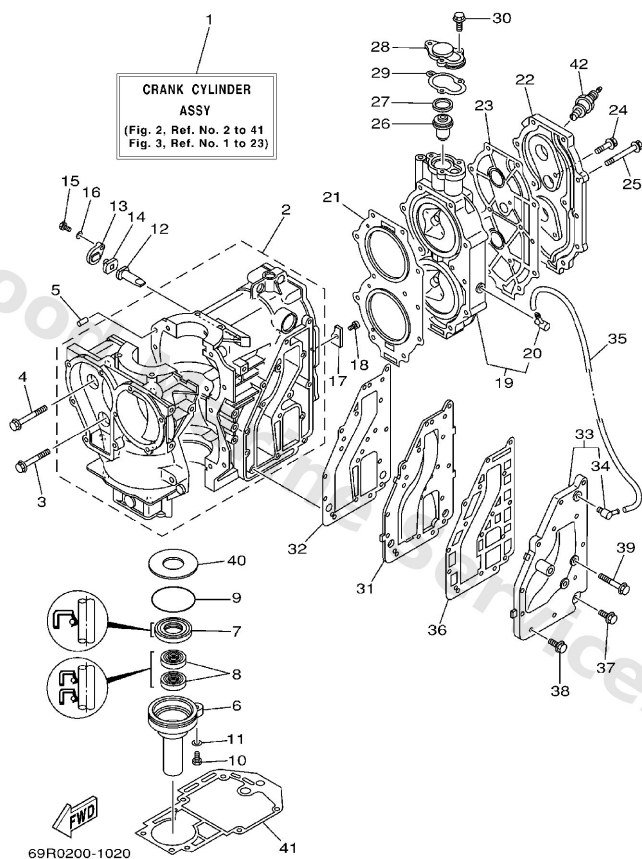
Ref	Part	
16	<a href="#">90387-32002</a> Collar	<a href="#">Buy now</a>
17	<a href="#">93390-00009</a> Brg,cyl-cal roller 260g nt	<a href="#">Buy now</a>
18	<a href="#">61N-11631-00-95</a> Piston (std)	<a href="#">Buy now</a>
18	<a href="#">61N-11635-00</a> Piston (0.25mm o/s) AP	<a href="#">Buy now</a>
18	<a href="#">61N-11636-00</a> Piston (0.50mm o/s) AP	<a href="#">Buy now</a>
19	<a href="#">61N-11603-00</a> Piston ring set (std)	<a href="#">Buy now</a>
19	<a href="#">61N-11604-00</a> Piston ring set (0.25mm o/s) AP	<a href="#">Buy now</a>
19	<a href="#">61N-11605-00</a> Piston ring set (0.50mm o/s) AP	<a href="#">Buy now</a>
20	<a href="#">689-11633-00</a> Pin, piston	<a href="#">Buy now</a>
21	<a href="#">93602-20M02</a> Pin, dowel b (664)	<a href="#">Buy now</a>
22	<a href="#">688-11634-00</a> Clip, piston pin	<a href="#">Buy now</a>
23	<a href="#">90201-20M27</a> Washer, plate (689)	<a href="#">Buy now</a>

# Cylinder. Crankcase



Ref	Part	
3	<a href="#">90119-08009</a> Bolt, with washer	<a href="#">Buy now</a>
4	<a href="#">90119-08M65</a> Bolt, with washer	<a href="#">Buy now</a>
5	<a href="#">93606-12019</a> Pin, dowel (614)	<a href="#">Buy now</a>
7	<a href="#">93102-25008</a> Oil seal	<a href="#">Buy now</a>
8	<a href="#">93101-16001</a> Oil seal	<a href="#">Buy now</a>
9	<a href="#">93210-58M21</a> O-ring (683)	<a href="#">Buy now</a>
10	<a href="#">97095-06022</a> Bolt(61k)	<a href="#">Buy now</a>
11	<a href="#">92995-06600</a> Washer, plain (646)	<a href="#">Buy now</a>
12	<a href="#">6J8-11325-00</a> Anode	<a href="#">Buy now</a>
14	<a href="#">6H3-11328-00</a> Grommet, anode	<a href="#">Buy now</a>
15	<a href="#">97013-06016</a> Bolt, hexagon deep recess	<a href="#">Buy now</a>
16	<a href="#">92903-06600</a> Washer, plain (646)	<a href="#">Buy now</a>
17	<a href="#">689-11325-00</a> Anode	<a href="#">Buy now</a>
18	<a href="#">90151-06M02</a> Screw, countersunk	<a href="#">Buy now</a>
20	<a href="#">676-11372-00</a> Nipple, hose	<a href="#">Buy now</a>

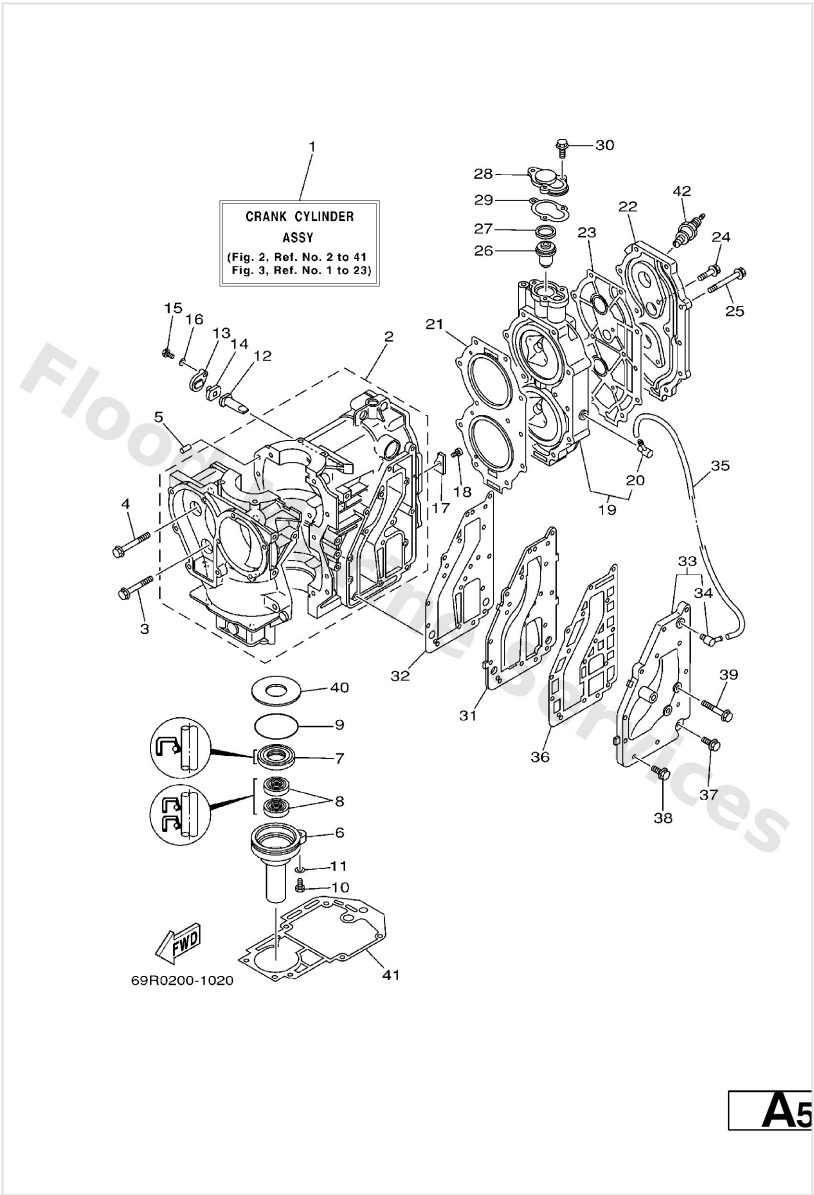
# Cylinder. Crankcase



A5

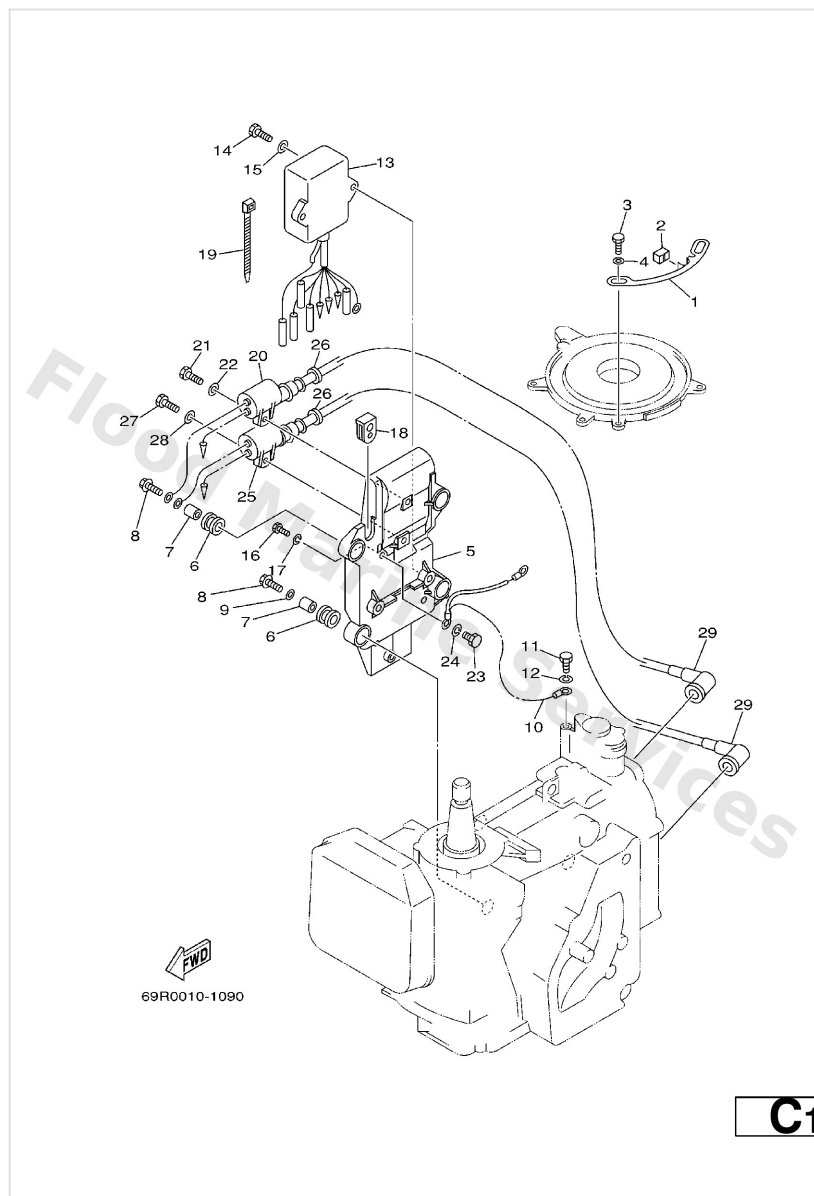
Ref	Part	
21	<a href="#">61N-11181-A1</a> Gasket, cylinder head 1	<a href="#">Buy now</a>
23	<a href="#">61T-11193-A1</a> Gasket, head cover 1	<a href="#">Buy now</a>
24	<a href="#">90119-06MA2</a> Bolt, with washer	<a href="#">Buy now</a>
25	<a href="#">90119-08015</a> Bolt, with washer	<a href="#">Buy now</a>
26	<a href="#">6E5-12411-01</a> Thermostat	<a href="#">Buy now</a>
27	<a href="#">90201-21567</a> Washer, plate (650)	<a href="#">Buy now</a>
28	<a href="#">655-12413-01-1S</a> Cover, thermostat	<a href="#">Buy now</a>
29	<a href="#">655-12414-A1</a> Gasket, cover	<a href="#">Buy now</a>
31	<a href="#">6K8-41121-00-1S</a> Inner cover,exhaust	<a href="#">Buy now</a>
32	<a href="#">6K8-41122-A1</a> Gasket, exhaust inner cover	<a href="#">Buy now</a>
33	<a href="#">61N-41123-00-1S</a> Outer cover, exhaust	<a href="#">Buy now</a>
35	<a href="#">90445-10M41</a> Hose (L400)	<a href="#">Buy now</a>
36	<a href="#">6K8-41124-A1</a> Gasket, exhaust outer cover	<a href="#">Buy now</a>
37	<a href="#">90119-06MA3</a> Bolt, with washer	<a href="#">Buy now</a>
38	<a href="#">90119-06MA4</a> Bolt, with washer	<a href="#">Buy now</a>

Cylinder. Crankcase



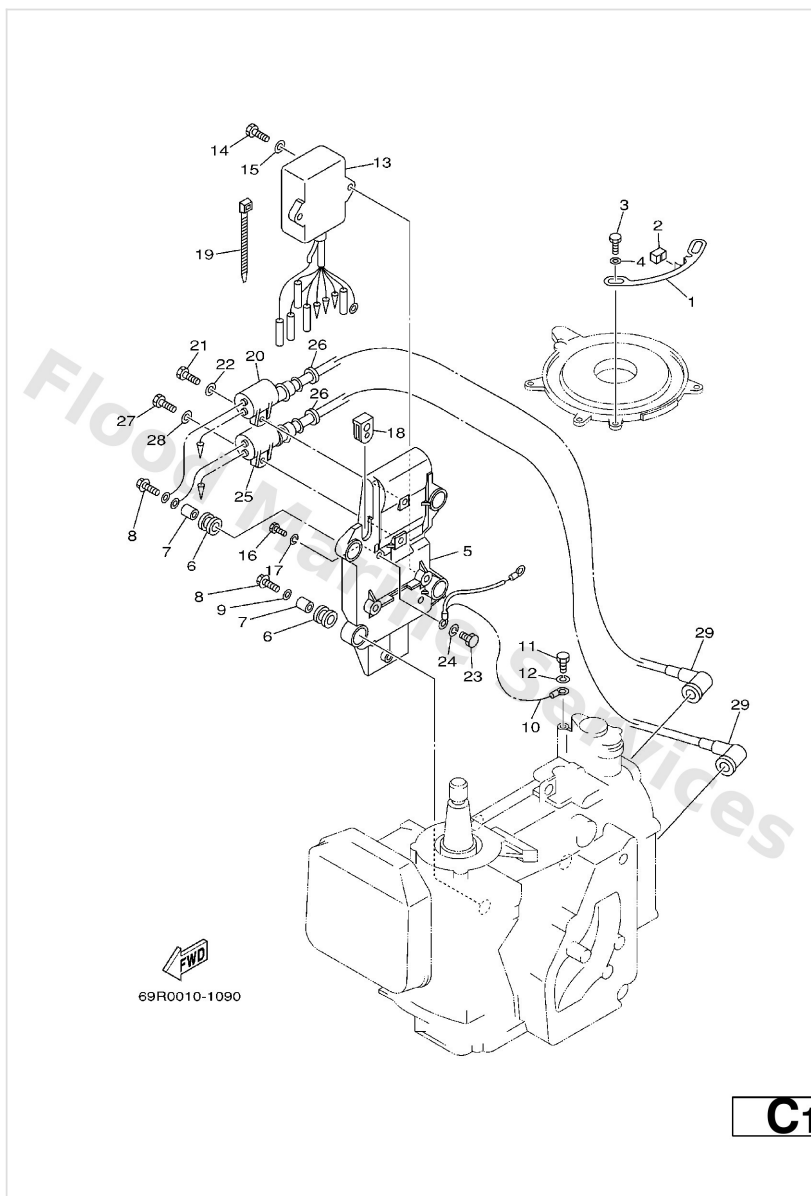
Ref	Part	
39	<a href="#">90119-06MA0</a> Bolt, hexagon w/w deep recess	<a href="#">Buy now</a>
40	<a href="#">90201-50306</a> Washer plate 648115870000	<a href="#">Buy now</a>
41	<a href="#">689-45113-A1</a> Gasket, upper casing	<a href="#">Buy now</a>
42	<a href="#">94702-00271</a> Plug, spark (br7hs-10)	<a href="#">Buy now</a>

# Electrical 1



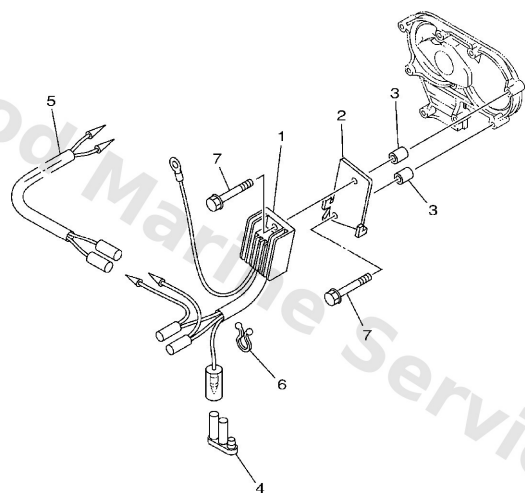
Ref	Part	
1	<a href="#">61N-41615-00</a> Stopper, magneto base	<a href="#">Buy now</a>
2	<a href="#">61N-44194-01</a> Cap	<a href="#">Buy now</a>
3	<a href="#">97095-06010</a> Bolt	<a href="#">Buy now</a>
4	<a href="#">92995-06600</a> Washer, plain (646)	<a href="#">Buy now</a>
5	<a href="#">61N-85542-00-94</a> Bracket	<a href="#">Buy now</a>
6	<a href="#">61N-82317-00</a> Damper, ignition coil	<a href="#">Buy now</a>
7	<a href="#">624-42542-00</a> Collar	<a href="#">Buy now</a>
8	<a href="#">90119-06M95</a> Bolt, with washer	<a href="#">Buy now</a>
9	<a href="#">90201-06M30</a> Washer, plate (6a1)	<a href="#">Buy now</a>
10	<a href="#">61N-82519-01</a> Wire, earth lead	<a href="#">Buy now</a>
11	<a href="#">97090-06012</a> Bolt(gh1)	<a href="#">Buy now</a>
12	<a href="#">92990-06100</a> Washer(6a1)	<a href="#">Buy now</a>
13	<a href="#">61N-85540-13</a> C.d.i. unit assembly	<a href="#">Buy now</a>
14	<a href="#">97095-06020</a> Bolt(7u8)	<a href="#">Buy now</a>
18	<a href="#">6H3-81922-00</a> Grommet	<a href="#">Buy now</a>

# Electrical 1



Ref	Part	
19	<a href="#">90465-13M11</a> Clamp (6e5)	<a href="#">Buy now</a>
20	<a href="#">6H5-85570-00</a> Ignition coil assembly	<a href="#">Buy now</a>
25	<a href="#">61N-85570-00</a> Ignition coil assembly	<a href="#">Buy now</a>
26	<a href="#">90480-25161</a> Grommet(656)	<a href="#">Buy now</a>
29	<a href="#">6G1-82370-21</a> Plug cap assembly	<a href="#">Buy now</a>

## Electrical 2

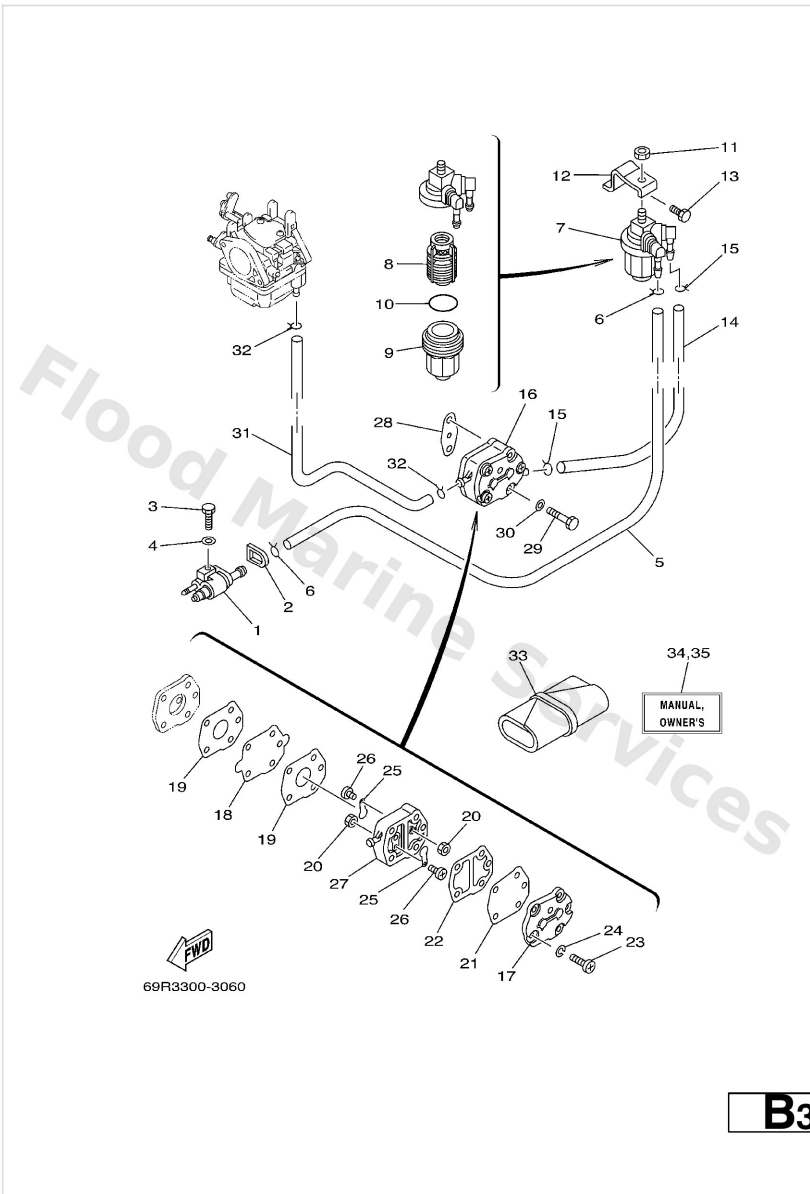


  
69R0664-1100

**C3**

Ref	Part	
1	<a href="#">6J8-81960-00</a> Rectifier & regulator assembly	<a href="#">Buy now</a>
2	<a href="#">69R-81915-00</a> Plate, regulator fitting	<a href="#">Buy now</a>
3	<a href="#">90387-06504</a> Collar(650)	<a href="#">Buy now</a>
4	<a href="#">6E5-82582-00</a> Cap 1	<a href="#">Buy now</a>
5	<a href="#">69R-82553-00</a> Extension, wire lead	<a href="#">Buy now</a>
6	<a href="#">90464-08M07</a> Clamp	<a href="#">Buy now</a>
7	<a href="#">90119-06026</a> Bolt, with washer	<a href="#">Buy now</a>

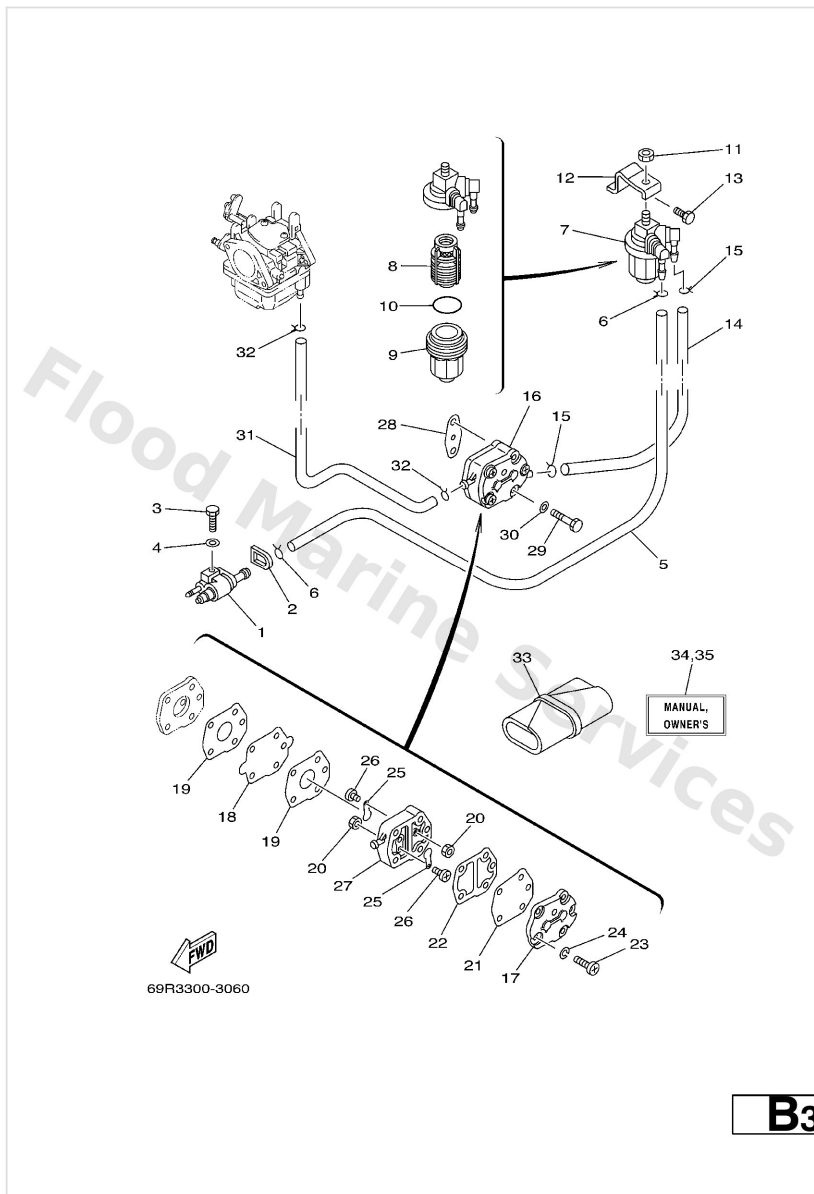
Fuel



Ref	Part	
1	<a href="#">6G1-24304-02</a> Fuel pipe joint comp. 1	<a href="#">Buy now</a>
2	<a href="#">61N-24329-00</a> Seal	<a href="#">Buy now</a>
3	<a href="#">97095-06020</a> Bolt(7u8)	<a href="#">Buy now</a>
4	<a href="#">92995-06600</a> Washer, plain (646)	<a href="#">Buy now</a>
5	<a href="#">90445-09M75</a> Hose (I1500)	<a href="#">Buy now</a>
6	<a href="#">90467-08004</a> Clip, pipe 6162435600	<a href="#">Buy now</a>
7	<a href="#">61N-24560-00</a> Filter assembly	<a href="#">Buy now</a>
8	<a href="#">61N-24563-00</a> Element, filter	<a href="#">Buy now</a>
9	<a href="#">61N-24521-00</a> Cup, filter	<a href="#">Buy now</a>
10	<a href="#">93210-32738</a> O-ring(1wg)	<a href="#">Buy now</a>
11	<a href="#">95380-08600</a> Nut (661)	<a href="#">Buy now</a>
12	<a href="#">61N-24566-01</a> Bracket, filter	<a href="#">Buy now</a>
13	<a href="#">97013-06014</a> Bolt(gj3)	<a href="#">Buy now</a>
14	<a href="#">689-24311-00</a> Hose	<a href="#">Buy now</a>
16	<a href="#">692-24410-00</a> Fuel pump assembly	<a href="#">Buy now</a>

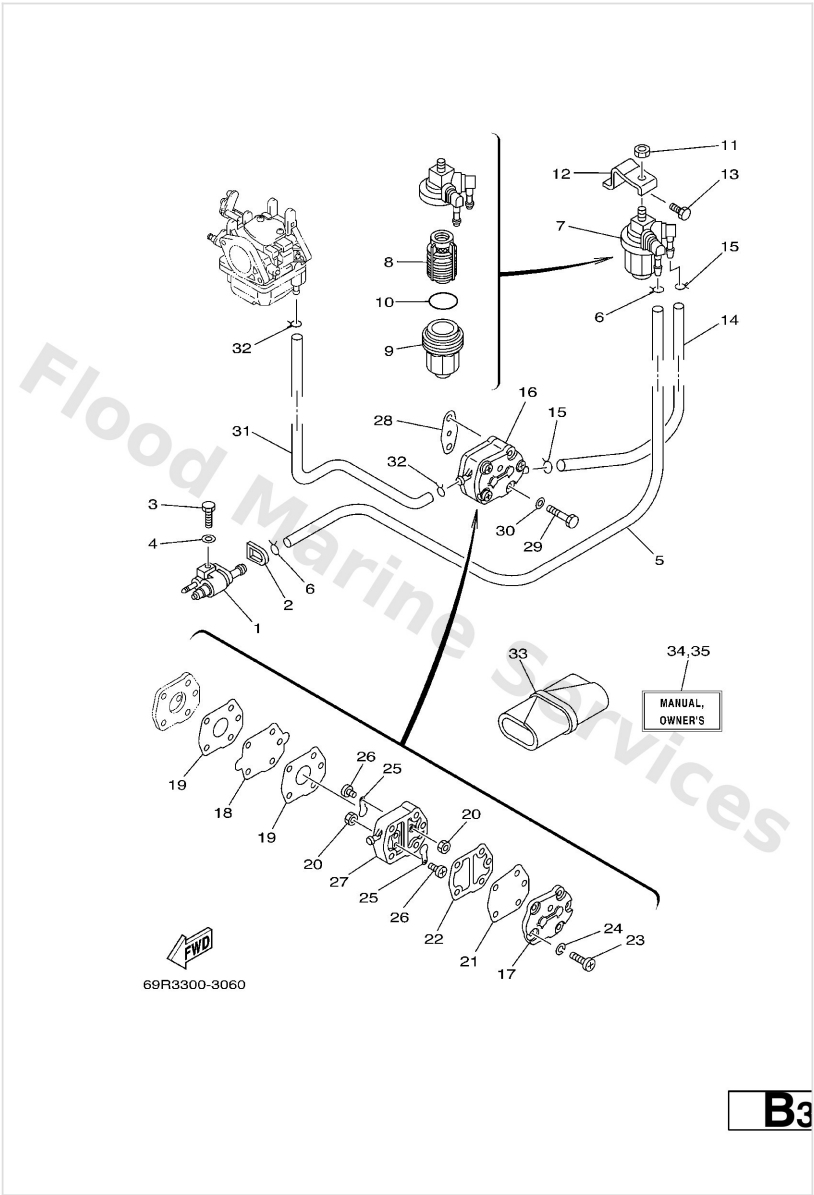


# Fuel



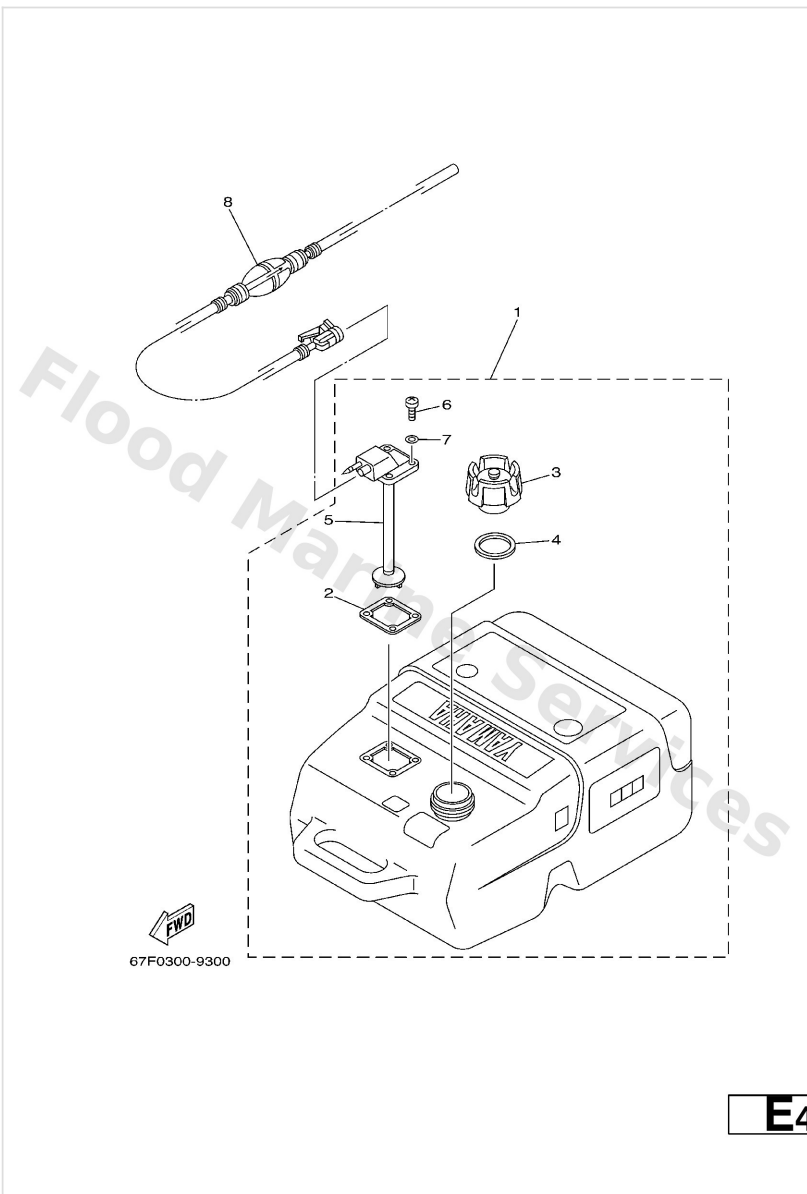
Ref	Part	
17	<a href="#">6A0-24413-00</a> Cover, pump	<a href="#">Buy now</a>
18	<a href="#">692-24411-00</a> Diaphragm	<a href="#">Buy now</a>
19	<a href="#">648-24434-01</a> Gasket, body	<a href="#">Buy now</a>
20	<a href="#">95380-03600</a> Nut (6g8)	<a href="#">Buy now</a>
21	<a href="#">663-24411-00</a> Diaphragm	<a href="#">Buy now</a>
22	<a href="#">648-24435-02</a> Gasket, body 2	<a href="#">Buy now</a>
23	<a href="#">98503-05028</a> Ybs86-530 screw, panhead	<a href="#">Buy now</a>
24	<a href="#">92990-05100</a> Ybs67-5 washer, spring	<a href="#">Buy now</a>
25	<a href="#">6A0-24421-01</a> Valve, check	<a href="#">Buy now</a>
26	<a href="#">6A0-14325-00</a> Screw, pan head	<a href="#">Buy now</a>
27	<a href="#">6A0-24412-02</a> Body 1	<a href="#">Buy now</a>
28	<a href="#">650-24431-A0</a> Gasket, fuel pump	<a href="#">Buy now</a>
29	<a href="#">97095-06040</a> Bolt (682)	<a href="#">Buy now</a>
31	<a href="#">6A1-24311-00</a> Pipe 1	<a href="#">Buy now</a>
33	<a href="#">656-W2810-02</a> Tool kit	<a href="#">Buy now</a>

Fuel



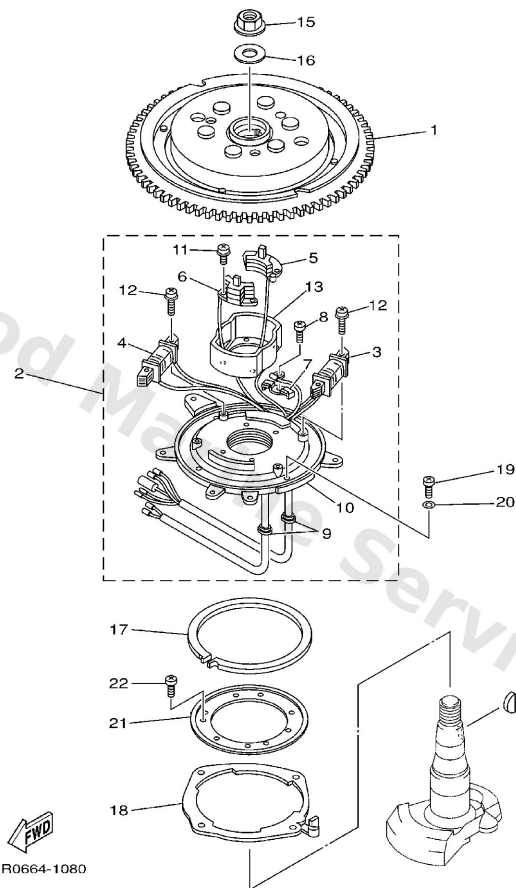
Ref	Part	
34	<a href="#">69R-28199-71-A0</a> Om 25bmh/w/w '03 UR (E,F,S)	<a href="#">Buy now</a>
34	<a href="#">69R-28199-71-B0</a> Om 25bmh/w/w '03 UR (D,NL,I)	<a href="#">Buy now</a>
35	<a href="#">69R-28199-81-A0</a> O/m 25bmh(69r3) '03 d, p, g UR (DK,P,GR)	<a href="#">Buy now</a>
35	<a href="#">69R-28199-81-B0</a> O/m 25bmh(69r3) '03 n, s, f UR (N,S,SS)	<a href="#">Buy now</a>

# Fuel Tank



Ref	Part	
1	<a href="#">6YK-24201-01</a> Fuel Tank assembly (25L) AP PLASTIC, 25L	<a href="#">Buy now</a>
2	<a href="#">6YL-24268-01</a> Gasket, fuel meter	<a href="#">Buy now</a>
3	<a href="#">6YK-24610-00</a> Cap assembly WITH INDICATOR	<a href="#">Buy now</a>
4	<a href="#">6YL-24641-00</a> Gasket, cap 1	<a href="#">Buy now</a>
5	<a href="#">6YK-24260-01</a> Fuel meter assembly	<a href="#">Buy now</a>
6	<a href="#">90157-05M16</a> Screw, pan head	<a href="#">Buy now</a>
7	<a href="#">6YL-24329-00</a> Seal	<a href="#">Buy now</a>
8	<a href="#">6YL-24306-52</a> Fuel pipe comp. 1 AP	<a href="#">Buy now</a>

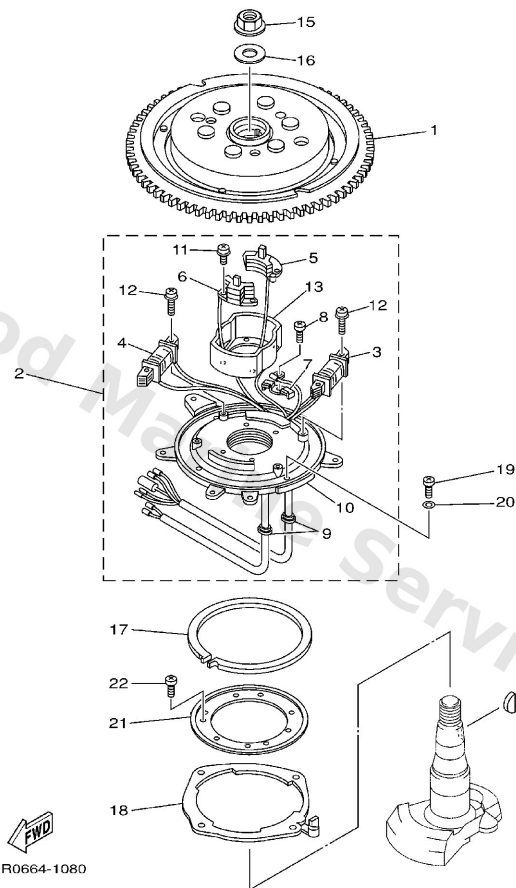
# Generator



**B7**

Ref	Part	
1	<a href="#">61T-85550-10</a> Rotor assembly	<a href="#">Buy now</a>
2	<a href="#">69P-85560-00</a> Base assembly	<a href="#">Buy now</a>
3	<a href="#">69P-85541-09</a> Coil, charge	<a href="#">Buy now</a>
4	<a href="#">61N-81313-09</a> Coil, lighting 1	<a href="#">Buy now</a>
5	<a href="#">61N-85543-09</a> Coil, pulser	<a href="#">Buy now</a>
6	<a href="#">61N-85543-19</a> Coil, pulser	<a href="#">Buy now</a>
7	<a href="#">6E9-81328-70</a> Clamp	<a href="#">Buy now</a>
8	<a href="#">97802-04006</a> Screw, pan head(3xp)	<a href="#">Buy now</a>
9	<a href="#">6E9-85516-70</a> Grommet	<a href="#">Buy now</a>
10	<a href="#">69P-85561-00</a> Base, magneto	<a href="#">Buy now</a>
11	<a href="#">97607-04112</a> Screw, pan head	<a href="#">Buy now</a>
12	<a href="#">97607-06125</a> Screw, pan head (76t)	<a href="#">Buy now</a>
13	<a href="#">61N-85537-00</a> Cover	<a href="#">Buy now</a>
14	<a href="#">90280-05015</a> Key, woodruff	<a href="#">Buy now</a>
15	<a href="#">90179-16M05</a> Nut (689)	<a href="#">Buy now</a>

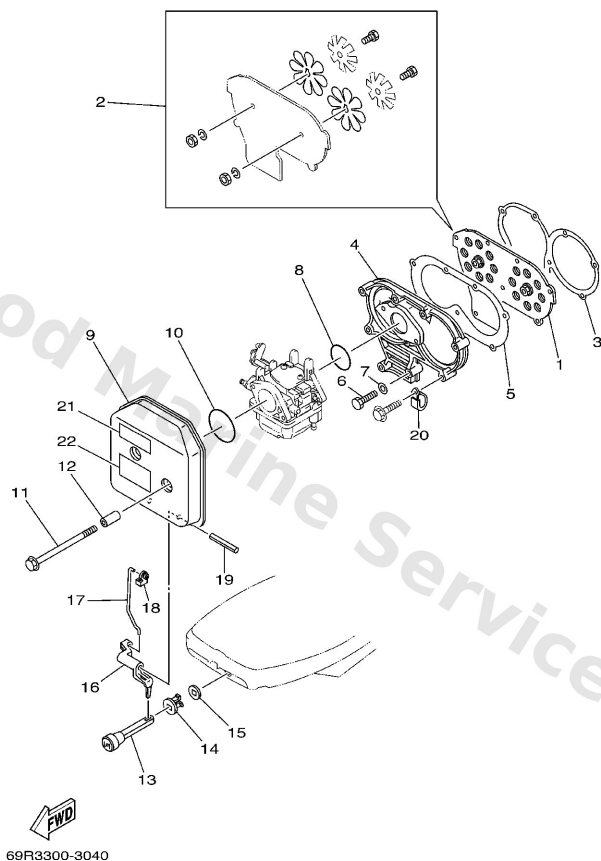
# Generator



**B7**

Ref	Part	
16	<a href="#">90201-16M44</a> Washer (689)	<a href="#">Buy now</a>
17	<a href="#">676-41611-00</a> Retainer, magneto base 1	<a href="#">Buy now</a>
18	<a href="#">676-41613-00</a> Plate, base friction	<a href="#">Buy now</a>
19	<a href="#">97880-05012</a> Screw,pan head (646)	<a href="#">Buy now</a>
20	<a href="#">92990-05600</a> Washer, plain (646)	<a href="#">Buy now</a>
21	<a href="#">689-41612-01</a> Retainer, magneto base	<a href="#">Buy now</a>
22	<a href="#">97880-06010</a> Screw pan head	<a href="#">Buy now</a>

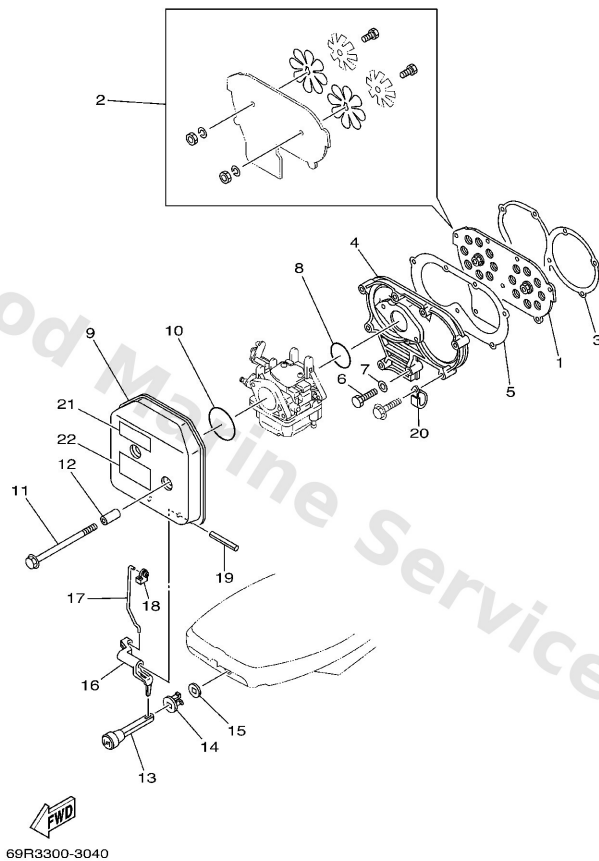
# Intake



**B1**

Ref	Part	
1	<a href="#">61N-13610-00</a> Reed valve assembly	<a href="#">Buy now</a>
2	<a href="#">689-W0004-00</a> Reed set	<a href="#">Buy now</a>
3	<a href="#">648-13621-A1</a> Gasket, valve seat	<a href="#">Buy now</a>
4	<a href="#">61N-13641-01-1S</a> Manifold, intake 1	<a href="#">Buy now</a>
5	<a href="#">648-13645-A0</a> Gasket, manifold 1	<a href="#">Buy now</a>
6	<a href="#">97013-06035</a> Bolt(3rv)	<a href="#">Buy now</a>
7	<a href="#">92903-06600</a> Washer, plain (646)	<a href="#">Buy now</a>
8	<a href="#">61N-14198-00</a> Gasket	<a href="#">Buy now</a>
9	<a href="#">61N-14440-00</a> Silencer assembly, intake	<a href="#">Buy now</a>
10	<a href="#">93210-40659</a> O-ring(36y)	<a href="#">Buy now</a>
11	<a href="#">90119-06M94</a> Bolt, with washer	<a href="#">Buy now</a>
12	<a href="#">90387-06M26</a> Collar(61n)	<a href="#">Buy now</a>
13	<a href="#">682-41271-00</a> Knob, choke	<a href="#">Buy now</a>
14	<a href="#">689-41273-00</a> Grommet	<a href="#">Buy now</a>
15	<a href="#">6J8-41274-00</a> Grommet 2	<a href="#">Buy now</a>

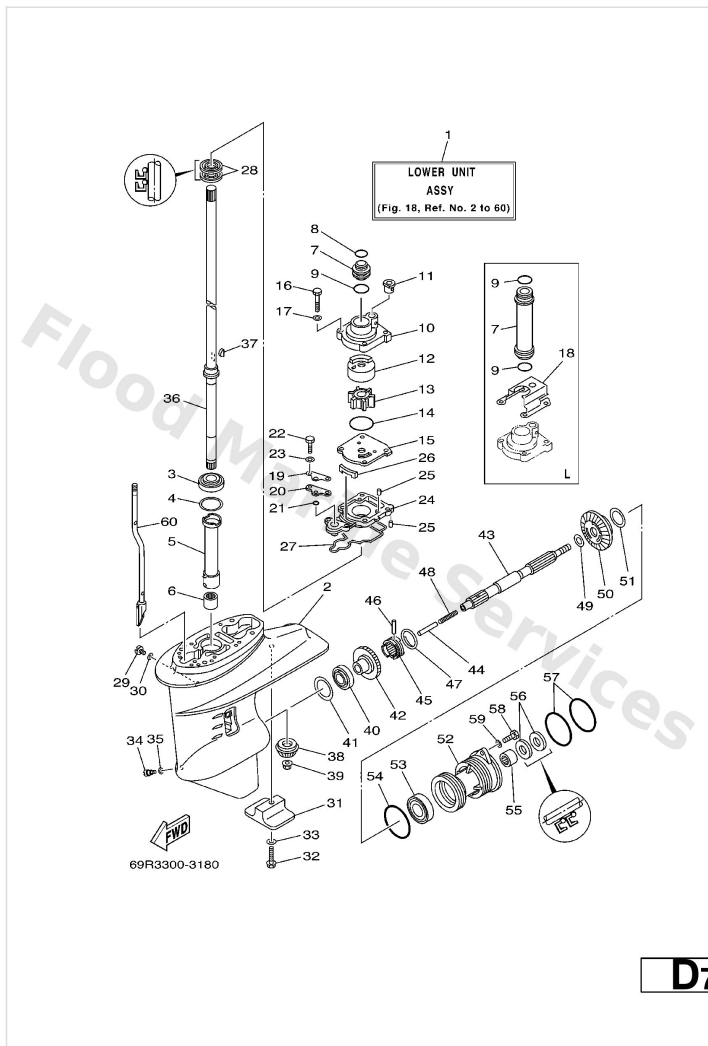
# Intake



**B1**

Ref	Part	
16	<a href="#">689-41252-01</a> Lever, choke 1	<a href="#">Buy now</a>
17	<a href="#">61N-41256-00</a> Rod, choke 1	<a href="#">Buy now</a>
18	<a href="#">661-41262-02</a> Joint, choke lever	<a href="#">Buy now</a>
19	<a href="#">91690-40048</a> Pin, spring (689)	<a href="#">Buy now</a>
20	<a href="#">90465-06M88</a> Clamp	<a href="#">Buy now</a>
21	<a href="#">6A1-83625-41</a> Mark 5	<a href="#">Buy now</a>
22	<a href="#">6A1-83625-51</a> Mark 5	<a href="#">Buy now</a>

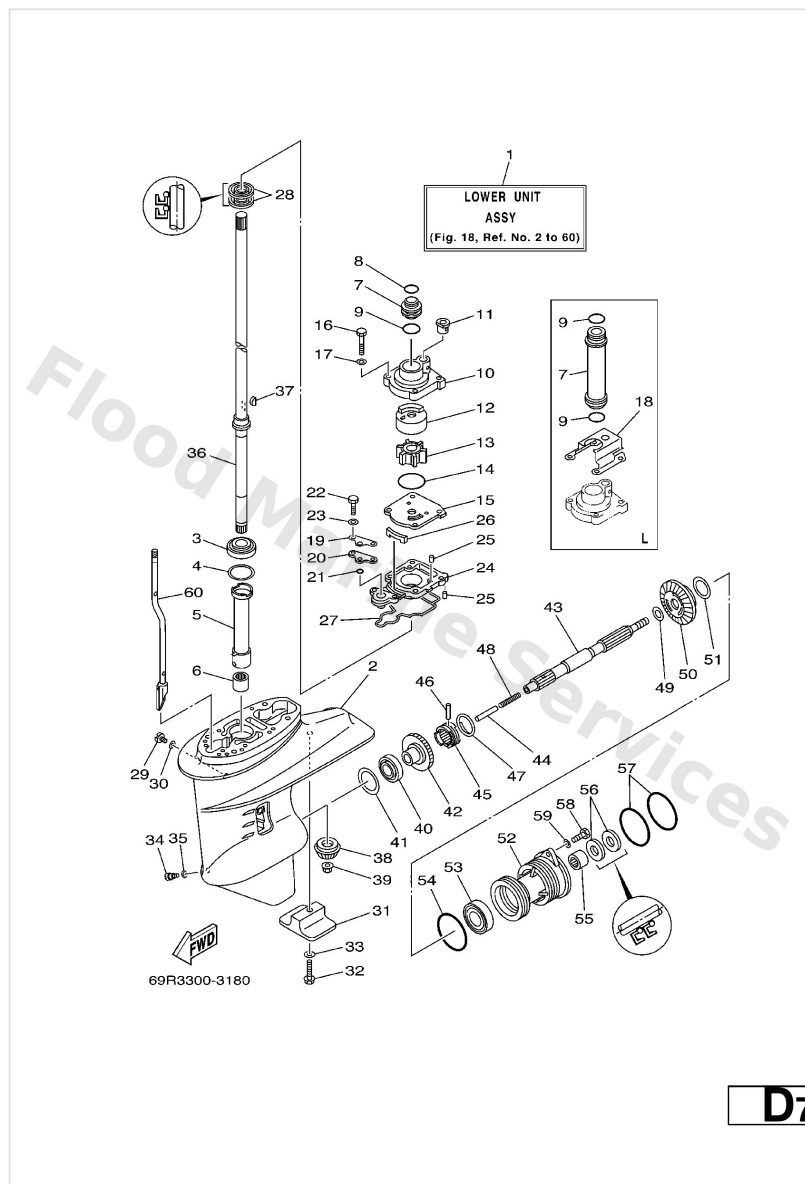
# Lower Casing. Drive 1



Ref	Part	
1	<a href="#">69P-45300-00-4D</a> Lower unit assembly S	<a href="#">Buy now</a>
1	<a href="#">69P-45300-10-4D</a> Lower unit assembly L	<a href="#">Buy now</a>
2	<a href="#">61N-45311-02-4D</a> Casing, lower	<a href="#">Buy now</a>
3	<a href="#">93332-000W5</a> Bearing(61n)	<a href="#">Buy now</a>
4	<a href="#">61N-45587-00-07</a> Shim (t:0.70mm) UR	<a href="#">Buy now</a>
4	<a href="#">61N-45587-00-10</a> Shim (t:1.0mm) UR	<a href="#">Buy now</a>
4	<a href="#">61N-45587-00-11</a> Shim (t:1.1mm) UR	<a href="#">Buy now</a>
4	<a href="#">61N-45587-00-12</a> Shim (t:1.2mm) UR	<a href="#">Buy now</a>
4	<a href="#">61N-45587-00-13</a> Shim (t:1.3mm) UR	<a href="#">Buy now</a>
4	<a href="#">61N-45587-00-14</a> Shim (t:1.4mm) UR	<a href="#">Buy now</a>
4	<a href="#">61N-45587-00-15</a> Shim (t:1.5mm) UR	<a href="#">Buy now</a>
4	<a href="#">61N-45587-00-16</a> Shim (t:1.6mm) UR	<a href="#">Buy now</a>
5	<a href="#">61N-45536-00</a> Sleeve, drive shaft	<a href="#">Buy now</a>
6	<a href="#">93315-220V7</a> Bearing, cylindrical(6j8)	<a href="#">Buy now</a>
7	<a href="#">61N-44362-00</a> Tube, water S	<a href="#">Buy now</a>

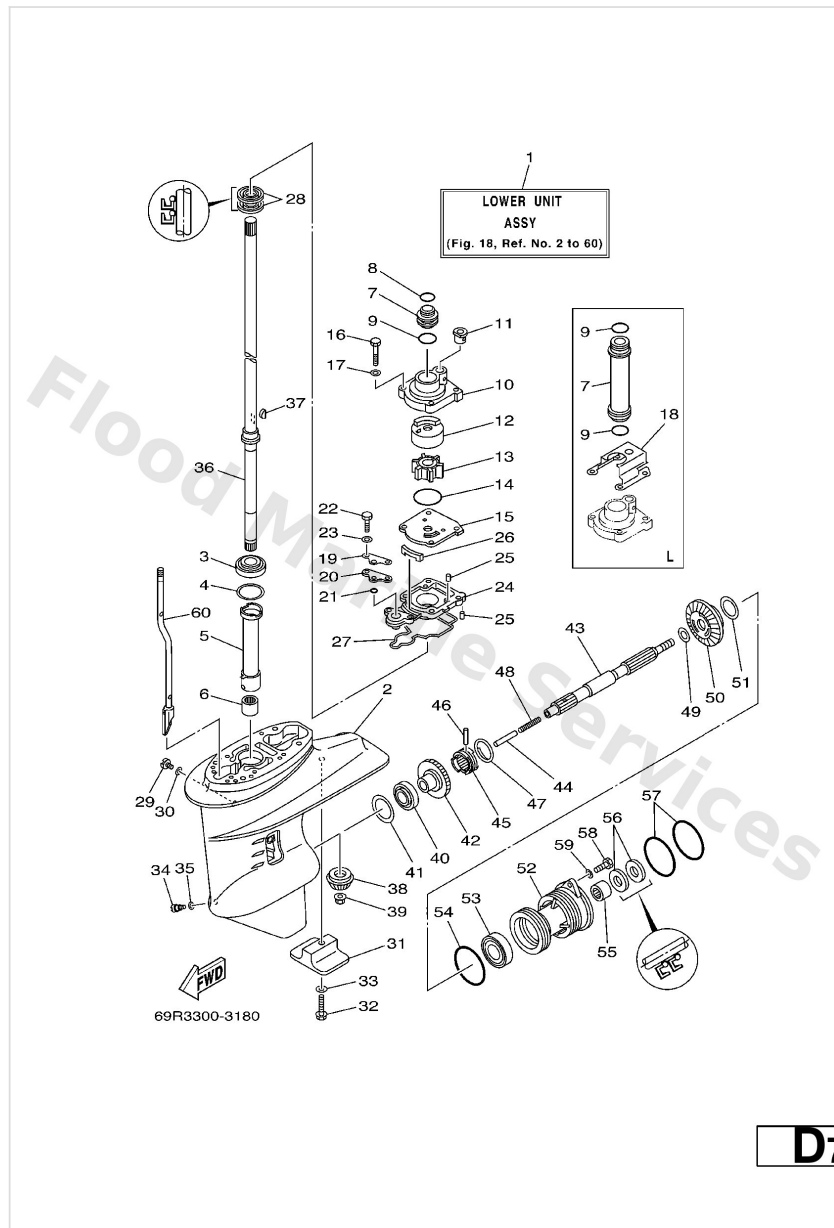


## Lower Casing. Drive 1



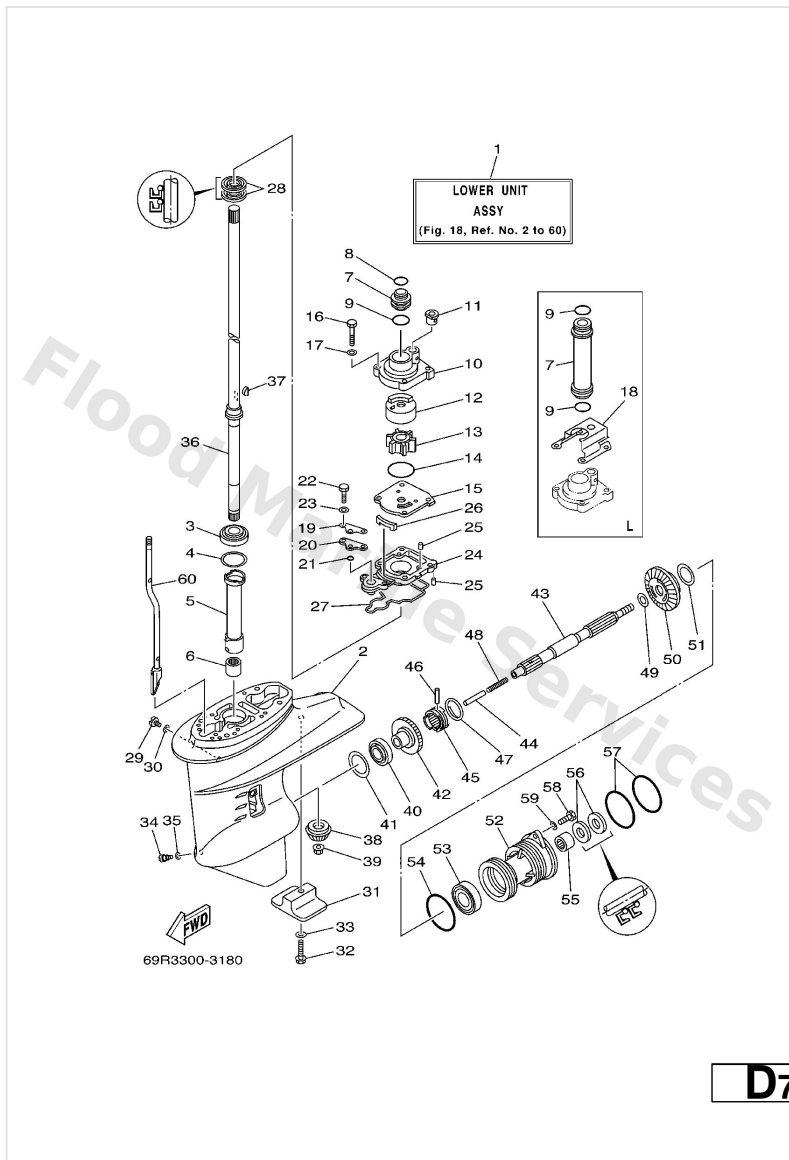
Ref	Part	
7	<a href="#">61N-44362-10</a> Tube, water L	<a href="#">Buy now</a>
8	<a href="#">93210-22164</a> O-ring S	<a href="#">Buy now</a>
9	<a href="#">93210-26130</a> O-ring S	<a href="#">Buy now</a>
10	<a href="#">69P-44311-00</a> Housing, water pump	<a href="#">Buy now</a>
11	<a href="#">6L2-44367-00</a> Damper, water seal 3	<a href="#">Buy now</a>
12	<a href="#">69P-44322-00</a> Insert, cartridge	<a href="#">Buy now</a>
13	<a href="#">6H4-44352-02</a> Impeller	<a href="#">Buy now</a>
14	<a href="#">93210-45161</a> O-ring	<a href="#">Buy now</a>
15	<a href="#">61N-44323-00</a> Outer plate, cartridge	<a href="#">Buy now</a>
16	<a href="#">97095-06040</a> Bolt (682)	<a href="#">Buy now</a>
17	<a href="#">92995-06600</a> Washer, plain (646)	<a href="#">Buy now</a>
18	<a href="#">65W-44328-11</a> Plate L	<a href="#">Buy now</a>
19	<a href="#">61N-44176-00</a> Bracket	<a href="#">Buy now</a>
20	<a href="#">61N-45321-00</a> Plate	<a href="#">Buy now</a>
21	<a href="#">93210-06ME6</a> O-ring	<a href="#">Buy now</a>

## Lower Casing. Drive 1



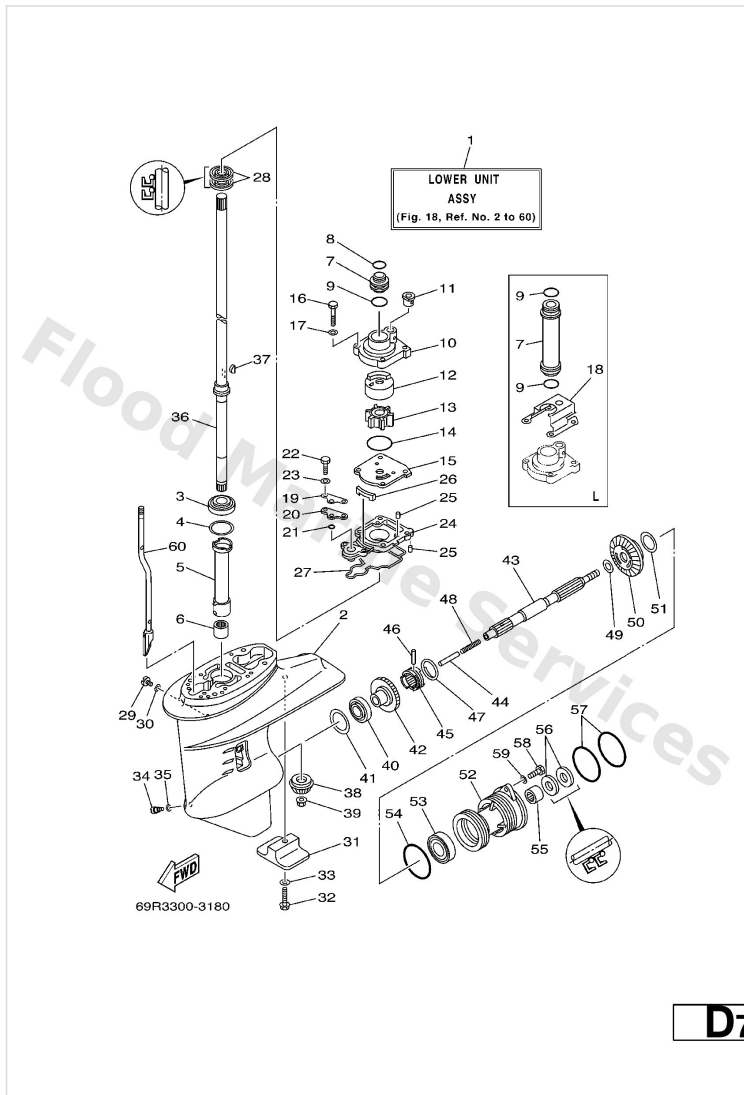
Ref	Part	
22	<a href="#">97095-06025</a> Bolt	<a href="#">Buy now</a>
24	<a href="#">61N-45331-00-5B</a> Housing, bearing	<a href="#">Buy now</a>
25	<a href="#">93604-10M03</a> Pin, dowel (688)	<a href="#">Buy now</a>
26	<a href="#">61N-45127-00</a> Seal	<a href="#">Buy now</a>
27	<a href="#">61N-45315-00</a> Packing, lower casing	<a href="#">Buy now</a>
28	<a href="#">93101-22067</a> Oil seal (22x36x6-663)	<a href="#">Buy now</a>
29	<a href="#">90340-08002</a> Plug, straight screw	<a href="#">Buy now</a>
30	<a href="#">90430-08020</a> Gasket	<a href="#">Buy now</a>
31	<a href="#">61N-45251-01</a> Anode	<a href="#">Buy now</a>
32	<a href="#">95895-06035</a> Bolt, flange(4nx)	<a href="#">Buy now</a>
33	<a href="#">92990-06300</a> Washer, tooth	<a href="#">Buy now</a>
34	<a href="#">688-45341-10</a> Plug, drain	<a href="#">Buy now</a>
36	<a href="#">61N-45510-00</a> Drive shaft assembly S	<a href="#">Buy now</a>
36	<a href="#">61N-45510-10</a> Drive shaft assembly L	<a href="#">Buy now</a>
37	<a href="#">90280-03M03</a> Key, woodruff (697)	<a href="#">Buy now</a>

# Lower Casing. Drive 1



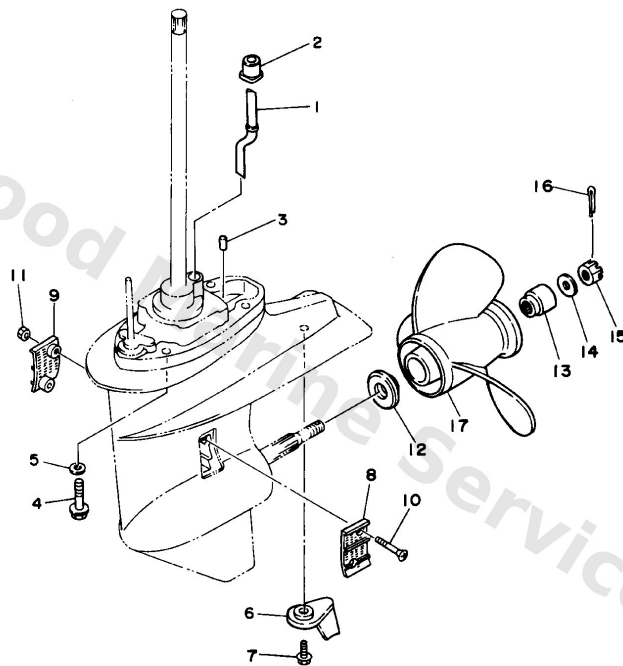
Ref	Part	
38	<a href="#">61N-45551-00</a> Pinion	<a href="#">Buy now</a>
39	<a href="#">90179-10M14</a> Nut(6j8)	<a href="#">Buy now</a>
40	<a href="#">93332-00005</a> Brg,cyl-cal roller 0.19g nt	<a href="#">Buy now</a>
41	<a href="#">6L2-45567-00-10</a> Shim (t:1.0mm) UR	<a href="#">Buy now</a>
41	<a href="#">6L2-45567-00-11</a> Shim (t:1.1mm) UR	<a href="#">Buy now</a>
41	<a href="#">6L2-45567-00-12</a> Shim (t:1.2mm) UR	<a href="#">Buy now</a>
41	<a href="#">6L2-45567-00-13</a> Shim (t:1.3mm) UR	<a href="#">Buy now</a>
41	<a href="#">6L2-45567-00-14</a> Shim (t:1.4mm) UR	<a href="#">Buy now</a>
42	<a href="#">61N-45560-00</a> Gear	<a href="#">Buy now</a>
43	<a href="#">6L2-45611-00</a> Shaft, propeller	<a href="#">Buy now</a>
44	<a href="#">648-45635-00</a> Plunger,shift	<a href="#">Buy now</a>
45	<a href="#">664-45631-02</a> Clutch, dog	<a href="#">Buy now</a>
46	<a href="#">90250-05010</a> Pin straight 648456320000	<a href="#">Buy now</a>
47	<a href="#">648-45633-00</a> Ring, cross pin	<a href="#">Buy now</a>
48	<a href="#">90501-10065</a> Spring compression648456360000	<a href="#">Buy now</a>

# Lower Casing. Drive 1



Ref	Part	
49	<a href="#">90201-20417</a> Washer, plate(663)	<a href="#">Buy now</a>
50	<a href="#">61N-45571-00</a> Gear	<a href="#">Buy now</a>
51	<a href="#">6L2-45577-00-10</a> Shim (t:1.0mm) UR	<a href="#">Buy now</a>
51	<a href="#">6L2-45577-00-11</a> Shim (t:1.1mm) UR	<a href="#">Buy now</a>
51	<a href="#">6L2-45577-00-12</a> Shim (t:1.2mm) UR	<a href="#">Buy now</a>
51	<a href="#">6L2-45577-00-13</a> Shim (t:1.3mm) UR	<a href="#">Buy now</a>
52	<a href="#">61N-45361-01-4D</a> Cap, lower casing	<a href="#">Buy now</a>
53	<a href="#">93306-00612</a> Bearing(2hr)	<a href="#">Buy now</a>
54	<a href="#">93210-64ME7</a> O-ring	<a href="#">Buy now</a>
55	<a href="#">93315-22004</a> Brg,cyl-cal roller 21g nt	<a href="#">Buy now</a>
56	<a href="#">93101-20M07</a> Oil seal	<a href="#">Buy now</a>
57	<a href="#">93210-65M50</a> O-ring	<a href="#">Buy now</a>
58	<a href="#">97075-06020</a> Bolt(7u8)	<a href="#">Buy now</a>
60	<a href="#">61N-44150-00</a> Shift cam assembly S	<a href="#">Buy now</a>
60	<a href="#">61N-44150-10</a> Shift cam assembly L	<a href="#">Buy now</a>

## Lower Casing. Drive 2

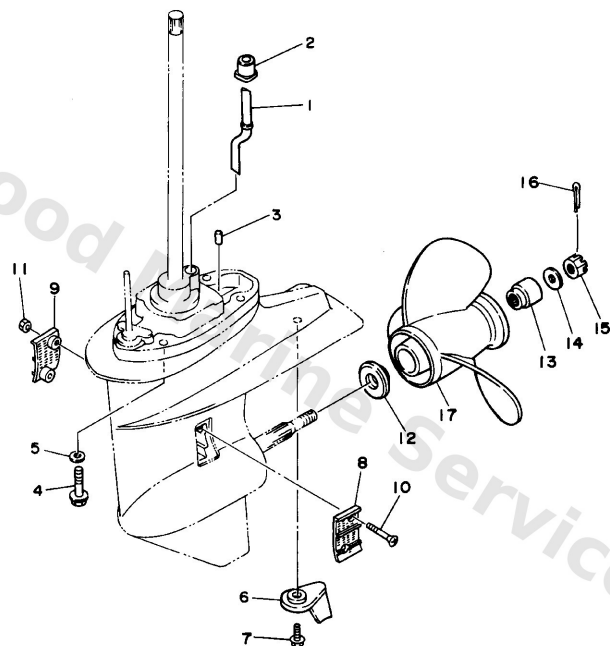


61R0010-4180

**E3**

Ref	Part	
1	<a href="#">61N-44361-00</a> Tube, water S	<a href="#">Buy now</a>
1	<a href="#">61N-44361-10</a> Tube, water L	<a href="#">Buy now</a>
2	<a href="#">689-44366-00</a> Damper, water seal 2	<a href="#">Buy now</a>
3	<a href="#">93606-11M24</a> Pin, dowel	<a href="#">Buy now</a>
4	<a href="#">90105-10M12</a> Bolt (689)	<a href="#">Buy now</a>
5	<a href="#">92995-10600</a> Washer, plate	<a href="#">Buy now</a>
6	<a href="#">61N-45371-00</a> Tab-trim	<a href="#">Buy now</a>
7	<a href="#">90119-06M48</a> Bolt, with washer(61n)	<a href="#">Buy now</a>
8	<a href="#">6L2-45214-00</a> Cover, water inlet	<a href="#">Buy now</a>
9	<a href="#">6L2-45215-00</a> Cover, water inlet	<a href="#">Buy now</a>
10	<a href="#">90151-05M05</a> Screw, countersunk	<a href="#">Buy now</a>
11	<a href="#">90185-05002</a> Nut nylon (sus)(ex4)	<a href="#">Buy now</a>
12	<a href="#">6L2-45987-01</a> Spacer	<a href="#">Buy now</a>
13	<a href="#">689-45997-00</a> Spacer	<a href="#">Buy now</a>
14	<a href="#">92990-14200</a> Washer, plain	<a href="#">Buy now</a>

## Lower Casing. Drive 2

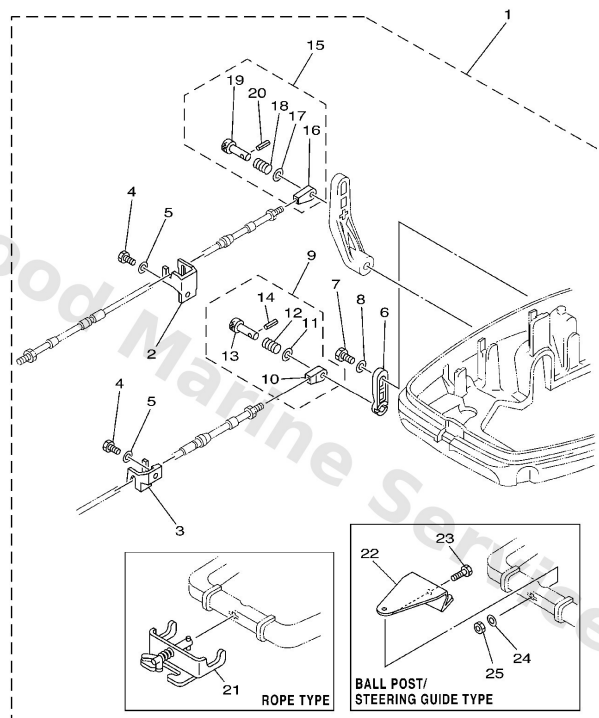


FWD  
61R0010-4180

E3

Ref	Part	
15	<a href="#">90171-14013</a> Nut(664)	<a href="#">Buy now</a>
16	<a href="#">91490-30022</a> Pin, cotter	<a href="#">Buy now</a>
17	<a href="#">62C-45941-00-EL</a> Propeller (3x9-7/8 x10 -f) UR	<a href="#">Buy now</a>
17	<a href="#">664-45941-01-EL</a> Propeller (3x9-7/8"x9"-f) UR	<a href="#">Buy now</a>
17	<a href="#">664-45943-01-EL</a> Propeller (3x9-7/8 x8 -f) UR	<a href="#">Buy now</a>
17	<a href="#">664-45945-00-EL</a> Propeller (3x9-7/8 x10-1/2 -f) UR	<a href="#">Buy now</a>
17	<a href="#">664-45947-01-EL</a> Propeller (3x9-7/8 x11-1/4 -f) UR	<a href="#">Buy now</a>
17	<a href="#">664-45949-02-EL</a> Propeller (3x9-7/8 x13 -f) UR	<a href="#">Buy now</a>
17	<a href="#">664-45952-00-EL</a> Propeller (3x9-7/8 x14 -f) UR	<a href="#">Buy now</a>
17	<a href="#">664-45954-01-EL</a> Propeller (3x9-7/8 x12 -f) UR	<a href="#">Buy now</a>

# Remote Control Attachment

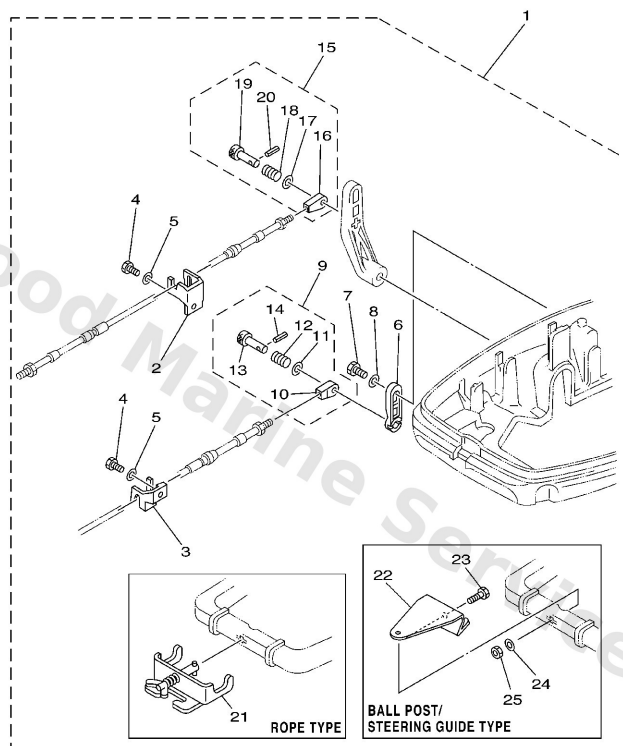


FWD  
69R3664-3170

D1

Ref	Part	
1	<a href="#">689-48501-01-4D</a> Remote cont. attachment assembly. AP ROPE TYPE	<a href="#">Buy now</a>
1	<a href="#">689-48501-21-4D</a> Remote cont. attachment assembly. AP BALL POST/	<a href="#">Buy now</a>
2	<a href="#">689-48531-50</a> Bracket, remote control 1	<a href="#">Buy now</a>
3	<a href="#">689-48532-50</a> Bracket, remote control 2	<a href="#">Buy now</a>
4	<a href="#">97095-06016</a> Bolt, hexagon deep recess	<a href="#">Buy now</a>
5	<a href="#">92995-06600</a> Washer, plain (646)	<a href="#">Buy now</a>
6	<a href="#">648-48534-50-4D</a> Throttle lever, control	<a href="#">Buy now</a>
7	<a href="#">97095-06012</a> Bolt(gh1)	<a href="#">Buy now</a>
9	<a href="#">648-48340-50</a> Cable end assembly	<a href="#">Buy now</a>
10	<a href="#">617-48346-90</a> Cable end, remote control	<a href="#">Buy now</a>
11	<a href="#">92990-08600</a> Washer, plain (663)	<a href="#">Buy now</a>
12	<a href="#">90501-10264</a> Spring 6174833290	<a href="#">Buy now</a>
13	<a href="#">617-48361-91</a> Hook, cable	<a href="#">Buy now</a>
14	<a href="#">91690-30012</a> Pin, spring	<a href="#">Buy now</a>
15	<a href="#">648-48330-50</a> Cable end assembly	<a href="#">Buy now</a>

# Remote Control Attachment



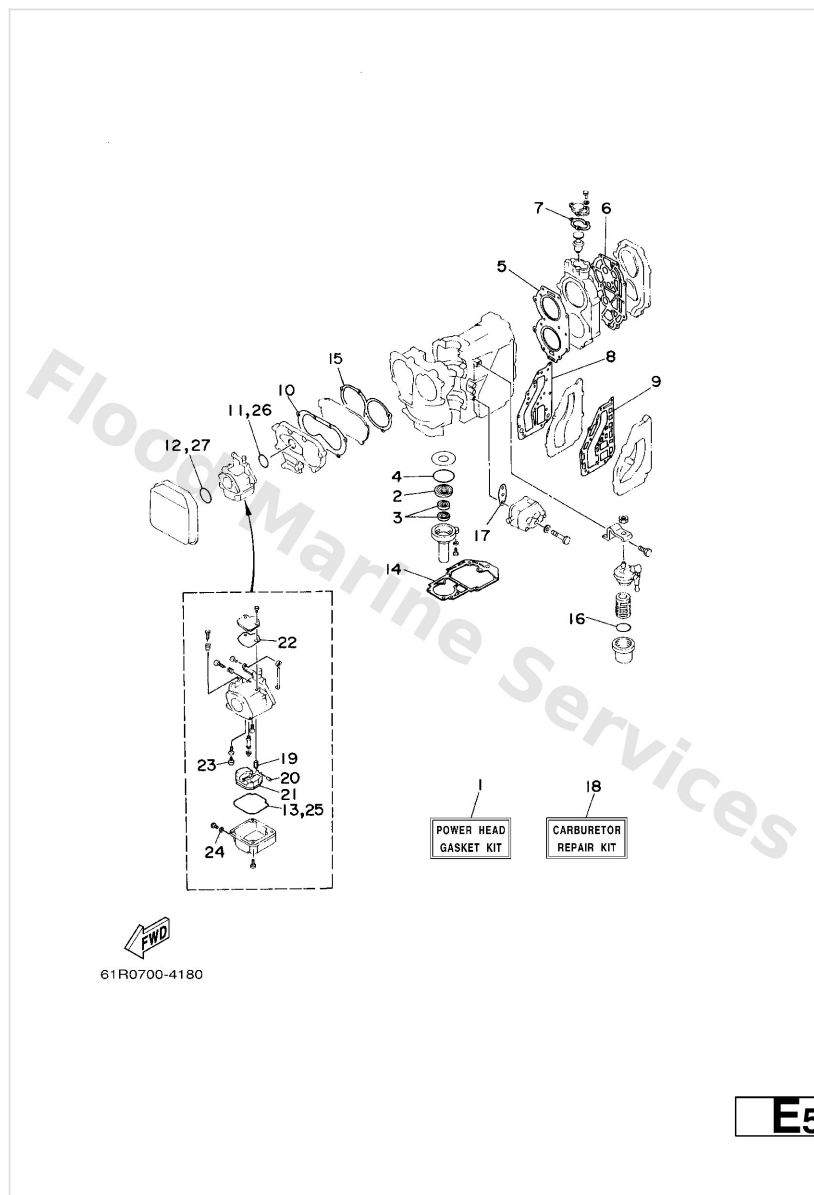
  
69R3664-3170

**D1**

Ref	Part	
16	<a href="#">648-48346-50</a> Cable,end remote control 3	<a href="#">Buy now</a>
18	<a href="#">90501-10071</a> Spring 6044833200	<a href="#">Buy now</a>
19	<a href="#">617-48331-91</a> Hook, cable	<a href="#">Buy now</a>
21	<a href="#">700-48510-12</a> Hook steering assembly ROPE TYPE	<a href="#">Buy now</a>
22	<a href="#">689-48511-01</a> Hook, steering BALL POST/	<a href="#">Buy now</a>
23	<a href="#">97075-10040</a> Bolt, hexagon deep recess BALL POST/	<a href="#">Buy now</a>
24	<a href="#">92990-10600</a> Washer, plate BALL POST/	<a href="#">Buy now</a>
25	<a href="#">90185-10051</a> Nut, self-locking BALL POST/	<a href="#">Buy now</a>

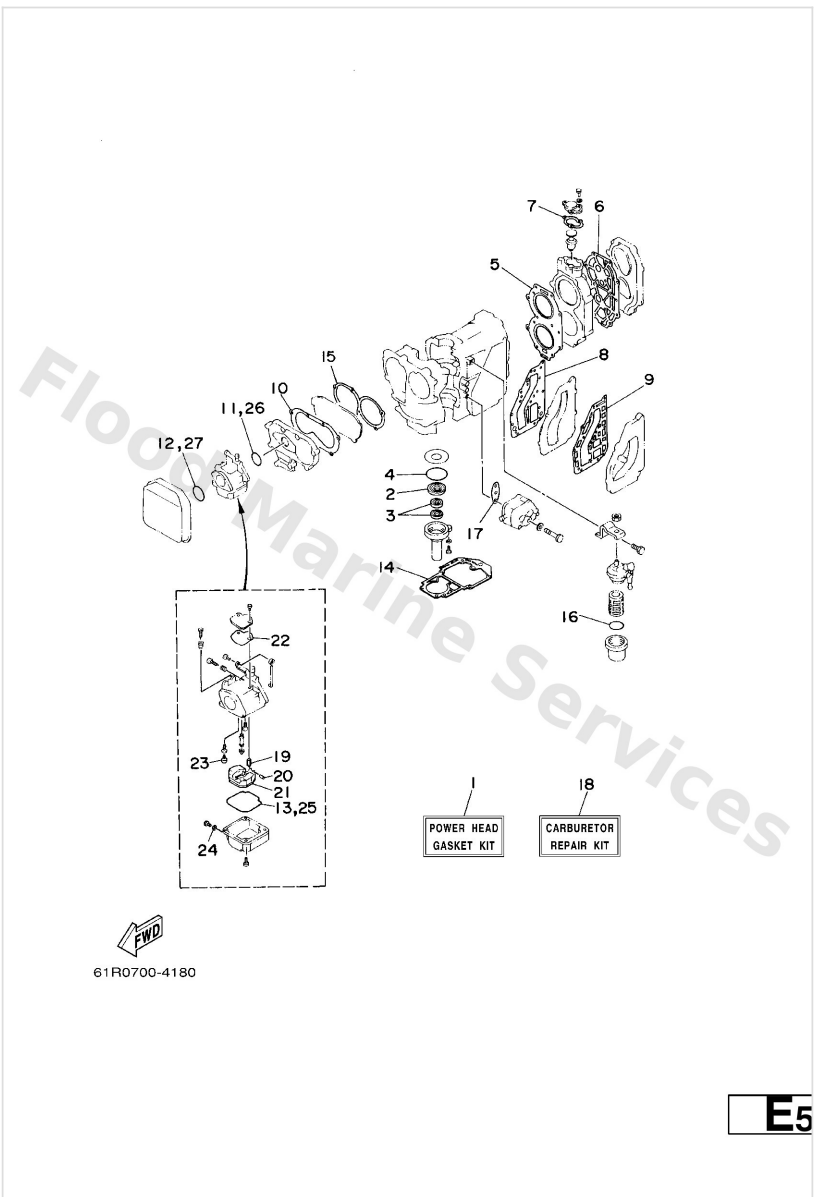


# Repair Kit 1



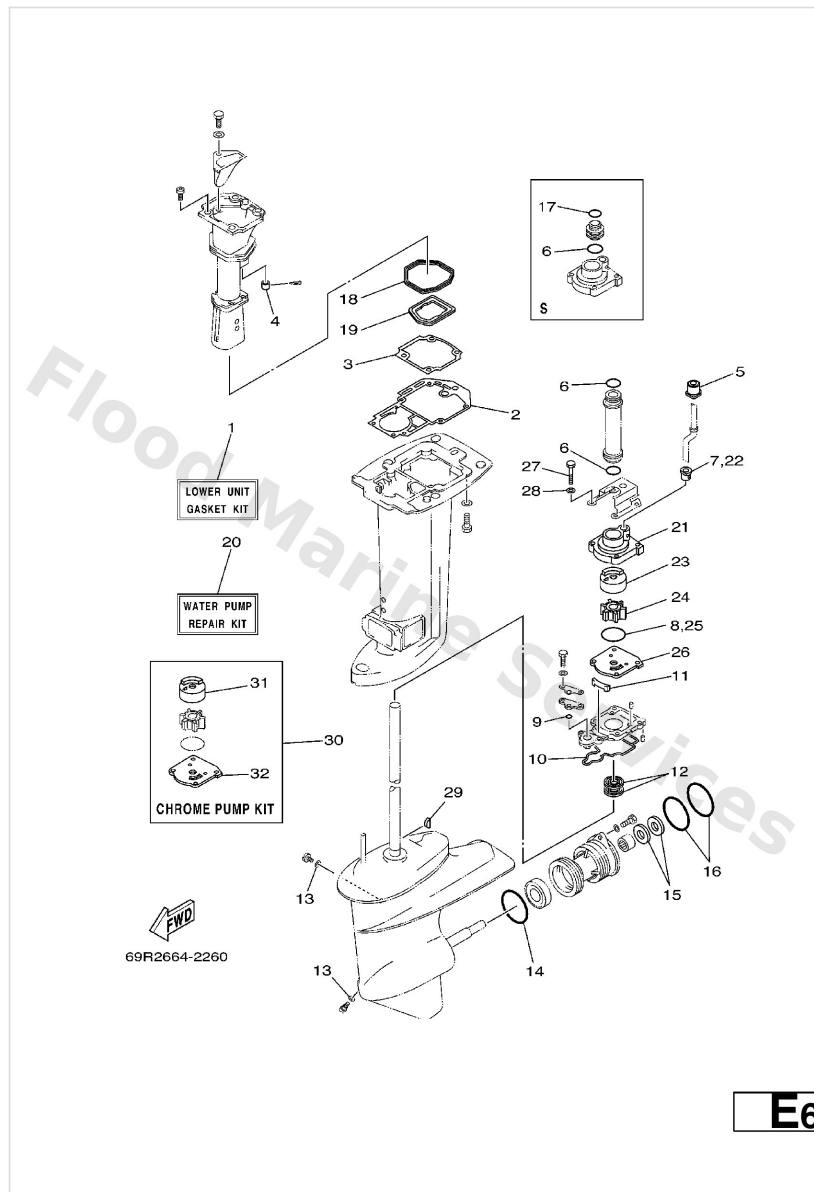
Ref	Part	
1	<a href="#">69P-W0001-00</a> Power head gasket kit	<a href="#">Buy now</a>
2	<a href="#">93102-25008</a> Oil seal	<a href="#">Buy now</a>
3	<a href="#">93101-16001</a> Oil seal	<a href="#">Buy now</a>
4	<a href="#">93210-58M21</a> O-ring (683)	<a href="#">Buy now</a>
5	<a href="#">61N-11181-A1</a> Gasket, cylinder head 1	<a href="#">Buy now</a>
6	<a href="#">61T-11193-A1</a> Gasket, head cover 1	<a href="#">Buy now</a>
7	<a href="#">655-12414-A1</a> Gasket, cover	<a href="#">Buy now</a>
8	<a href="#">6K8-41122-A1</a> Gasket, exhaust inner cover	<a href="#">Buy now</a>
9	<a href="#">6K8-41124-A1</a> Gasket, exhaust outer cover	<a href="#">Buy now</a>
10	<a href="#">648-13645-A0</a> Gasket, manifold 1	<a href="#">Buy now</a>
11	<a href="#">61N-14198-00</a> Gasket	<a href="#">Buy now</a>
12	<a href="#">93210-40659</a> O-ring(36y)	<a href="#">Buy now</a>
13	<a href="#">6L2-14384-00</a> Gasket, float chamber	<a href="#">Buy now</a>
14	<a href="#">689-45113-A1</a> Gasket, upper casing	<a href="#">Buy now</a>
15	<a href="#">648-13621-A1</a> Gasket, valve seat	<a href="#">Buy now</a>

# Repair Kit 1



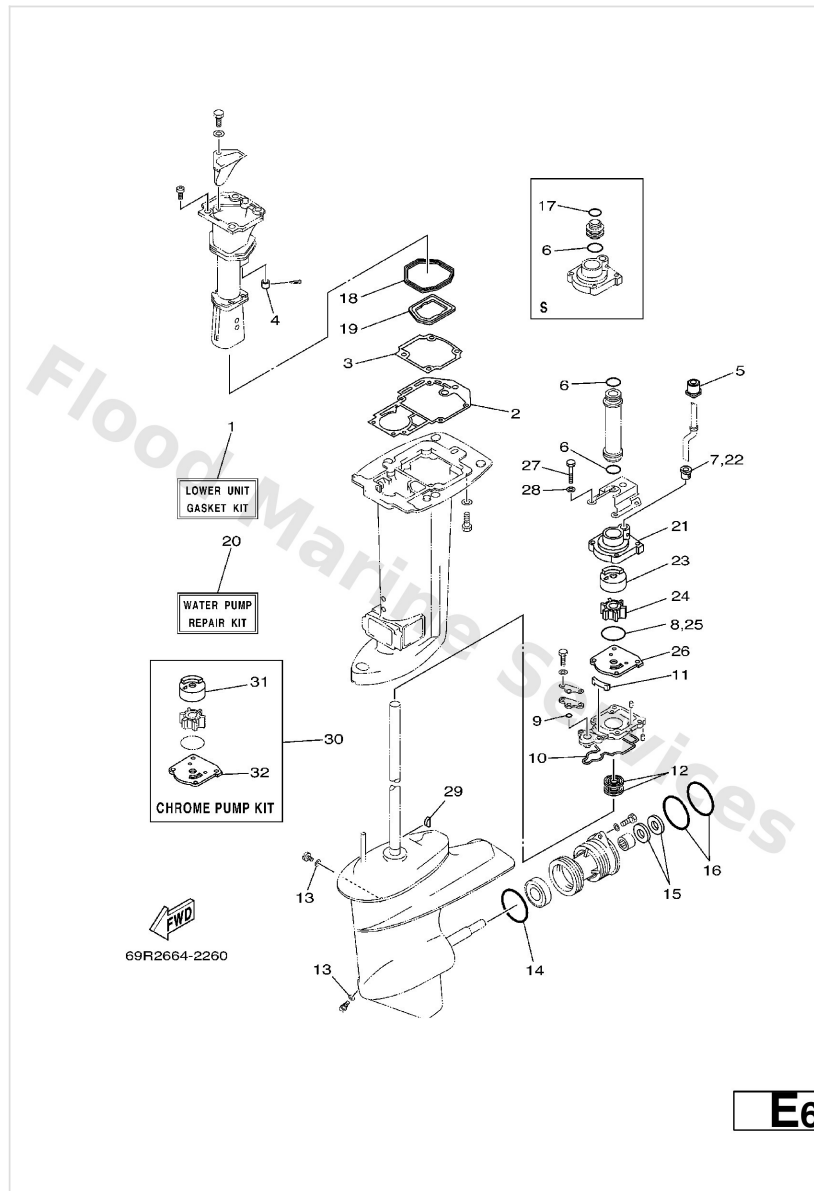
Ref	Part	
16	<a href="#">93210-32738</a> O-ring(1wg)	<a href="#">Buy now</a>
17	<a href="#">650-24431-A0</a> Gasket,fuel pump	<a href="#">Buy now</a>
18	<a href="#">61N-W0093-00</a> Carburetor repair kit	<a href="#">Buy now</a>
19	<a href="#">61N-14392-00</a> Valve, needle	<a href="#">Buy now</a>
20	<a href="#">6E5-14386-01</a> Pin, float	<a href="#">Buy now</a>
21	<a href="#">6L2-14385-00</a> Float	<a href="#">Buy now</a>
22	<a href="#">6L2-14399-00</a> Gasket	<a href="#">Buy now</a>
23	<a href="#">50M-14355-00</a> Plug	<a href="#">Buy now</a>
24	<a href="#">6L2-14398-00</a> Gasket	<a href="#">Buy now</a>

## Repair Kit 2



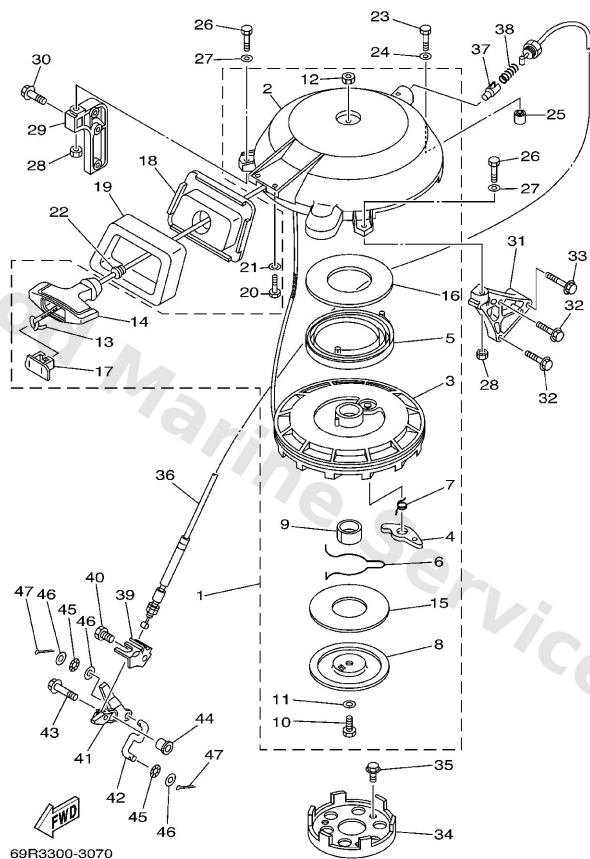
Ref	Part	
1	<a href="#">69P-W0001-20</a> Lower unit gasket kit	<a href="#">Buy now</a>
2	<a href="#">689-45113-A1</a> Gasket, upper casing	<a href="#">Buy now</a>
3	<a href="#">69P-41134-A0</a> Gasket, exhaust manifold	<a href="#">Buy now</a>
4	<a href="#">6A8-41135-00</a> Gasket, exhaust manifold 3	<a href="#">Buy now</a>
5	<a href="#">689-44366-00</a> Damper, water seal 2	<a href="#">Buy now</a>
6	<a href="#">93210-26130</a> O-ring UN	<a href="#">Buy now</a>
7	<a href="#">6L2-44367-00</a> Damper, water seal 3	<a href="#">Buy now</a>
8	<a href="#">93210-45161</a> O-ring	<a href="#">Buy now</a>
9	<a href="#">93210-06ME6</a> O-ring	<a href="#">Buy now</a>
10	<a href="#">61N-45315-00</a> Packing, lower casing	<a href="#">Buy now</a>
11	<a href="#">61N-45127-00</a> Seal	<a href="#">Buy now</a>
12	<a href="#">93101-22067</a> Oil seal (22x36x6-663)	<a href="#">Buy now</a>
13	<a href="#">90430-08020</a> Gasket	<a href="#">Buy now</a>
14	<a href="#">93210-64ME7</a> O-ring	<a href="#">Buy now</a>
15	<a href="#">93101-20M07</a> Oil seal	<a href="#">Buy now</a>

## Repair Kit 2



Ref	Part	
16	<a href="#">93210-65M50</a> O-ring	<a href="#">Buy now</a>
17	<a href="#">93210-22164</a> O-ring S	<a href="#">Buy now</a>
18	<a href="#">69P-41138-00</a> Seal, ext. 1	<a href="#">Buy now</a>
19	<a href="#">69P-41139-00</a> Seal, ext. 2	<a href="#">Buy now</a>
20	<a href="#">69P-W0078-00</a> Water pump repair kit	<a href="#">Buy now</a>
21	<a href="#">69P-44311-00</a> Housing, water pump	<a href="#">Buy now</a>
23	<a href="#">69P-44322-00</a> Insert, cartridge	<a href="#">Buy now</a>
24	<a href="#">6H4-44352-02</a> Impeller	<a href="#">Buy now</a>
26	<a href="#">61N-44323-00</a> Outer plate, cartridge	<a href="#">Buy now</a>
27	<a href="#">97095-06040</a> Bolt (682)	<a href="#">Buy now</a>
28	<a href="#">92995-06600</a> Washer, plain (646)	<a href="#">Buy now</a>
29	<a href="#">90280-03M03</a> Key, woodruff (697)	<a href="#">Buy now</a>
30	<a href="#">69P-W0078-0A</a> Chrome pump kit	<a href="#">Buy now</a>
31	<a href="#">69P-44322-40</a> Insert, cartridge	<a href="#">Buy now</a>
32	<a href="#">61N-44323-40</a> Outer plate, cartridge	<a href="#">Buy now</a>

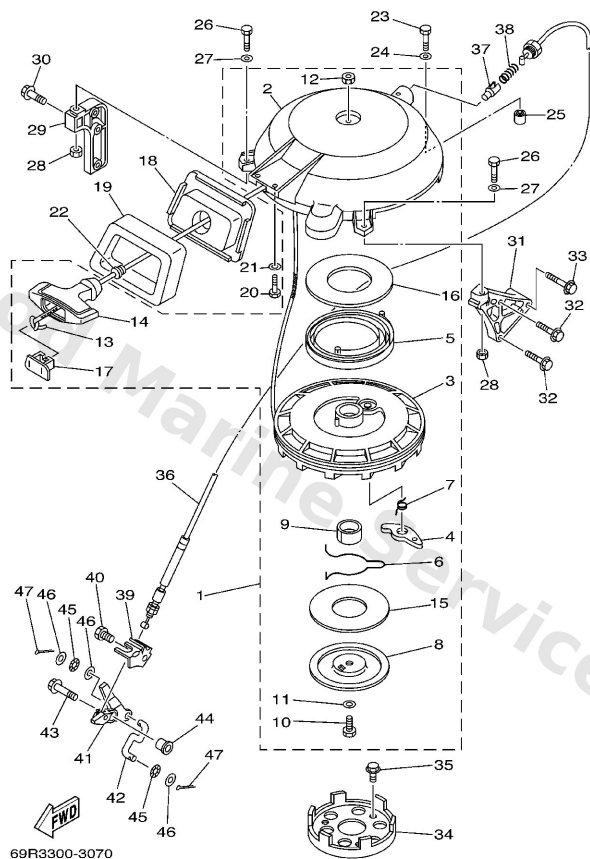
# Starter



**B5**

Ref	Part	
1	<a href="#">61N-W1571-11</a> Starter assembly	<a href="#">Buy now</a>
2	<a href="#">61N-15711-10</a> Case, starter	<a href="#">Buy now</a>
3	<a href="#">6G0-15714-01</a> Drum, sheave	<a href="#">Buy now</a>
4	<a href="#">6F5-15741-01</a> Pawl, drive	<a href="#">Buy now</a>
5	<a href="#">6F5-15713-01</a> Spring, starter	<a href="#">Buy now</a>
6	<a href="#">61N-15715-00</a> Spring, drive plate	<a href="#">Buy now</a>
7	<a href="#">61N-15734-00</a> Spring, return	<a href="#">Buy now</a>
8	<a href="#">6F5-15716-01</a> Drive, plate	<a href="#">Buy now</a>
9	<a href="#">6G0-15754-00</a> Bushing 2	<a href="#">Buy now</a>
10	<a href="#">97013-08030</a> Bolt	<a href="#">Buy now</a>
11	<a href="#">6F5-15726-01</a> Washer, lock	<a href="#">Buy now</a>
12	<a href="#">95303-08700</a> Nut(661)	<a href="#">Buy now</a>
13	<a href="#">*</a> item_description	<a href="#">Buy now</a>
14	<a href="#">689-15755-01</a> Handle, starter	<a href="#">Buy now</a>
15	<a href="#">6F5-15764-00</a> Collar	<a href="#">Buy now</a>

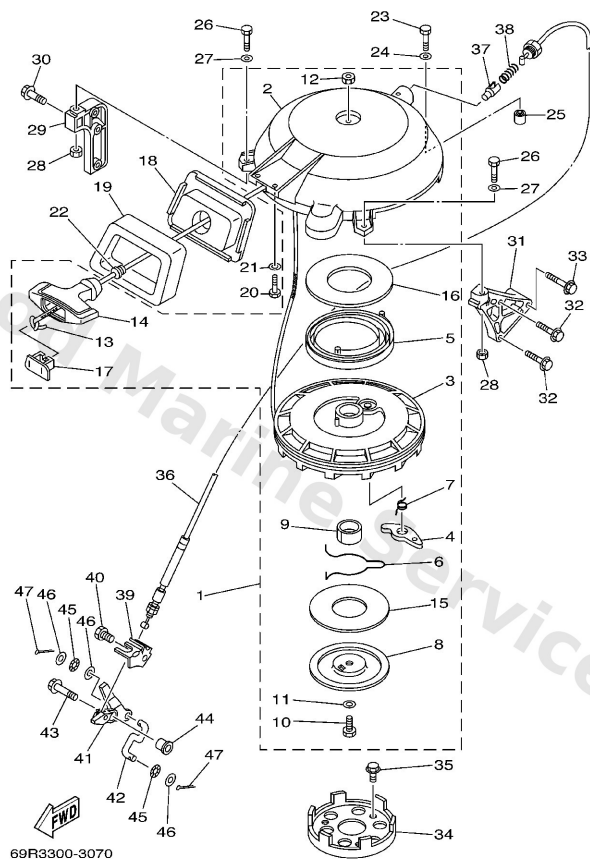
# Starter



**B5**

Ref	Part	
16	<a href="#">6F5-15739-00</a> Washer, thrust 2	<a href="#">Buy now</a>
17	<a href="#">6F5-15779-02</a> Cover	<a href="#">Buy now</a>
18	<a href="#">61N-15758-01-4D</a> Guide, Rope	<a href="#">Buy now</a>
19	<a href="#">61N-15762-00</a> Seal, rubber 2	<a href="#">Buy now</a>
20	<a href="#">97095-06016</a> Bolt, hexagon deep recess	<a href="#">Buy now</a>
21	<a href="#">92995-06600</a> Washer, plain (646)	<a href="#">Buy now</a>
22	<a href="#">6A0-15789-00</a> Damper	<a href="#">Buy now</a>
23	<a href="#">97095-06035</a> Bolt(j52)	<a href="#">Buy now</a>
25	<a href="#">99530-10014</a> Pin, dowel	<a href="#">Buy now</a>
28	<a href="#">95380-06600</a> Nut(661)	<a href="#">Buy now</a>
29	<a href="#">6H7-15771-01-94</a> Stay 1	<a href="#">Buy now</a>
30	<a href="#">90119-06MA3</a> Bolt, with washer	<a href="#">Buy now</a>
31	<a href="#">656-15772-00-94</a> Stay 2	<a href="#">Buy now</a>
33	<a href="#">90119-06025</a> Bolt, with washer	<a href="#">Buy now</a>
34	<a href="#">6F5-15723-01</a> Pully, starter	<a href="#">Buy now</a>

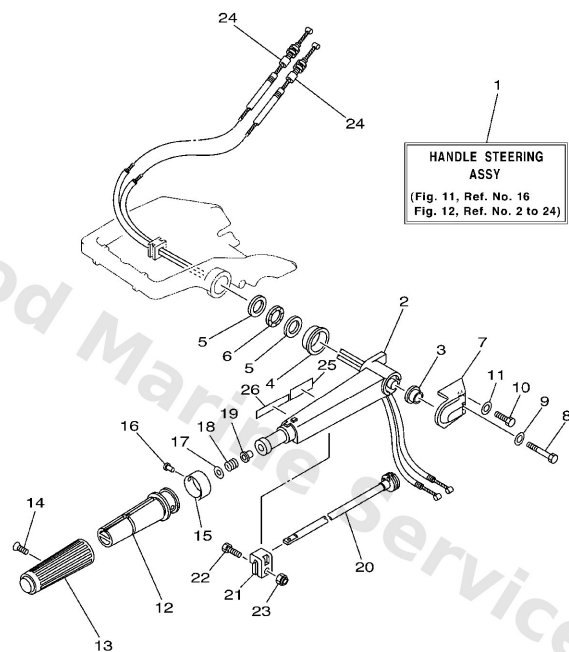
# Starter



**B5**

Ref	Part	
35	<a href="#">90105-08M10</a> Bolt (6a0)	<a href="#">Buy now</a>
36	<a href="#">61T-15770-00</a> Cable comp., starter stop	<a href="#">Buy now</a>
37	<a href="#">656-15748-00</a> Plunger, starter stop	<a href="#">Buy now</a>
38	<a href="#">90501-10227</a> Spring, comprreshion(656)	<a href="#">Buy now</a>
39	<a href="#">69P-15774-00</a> Stay 4	<a href="#">Buy now</a>
40	<a href="#">97095-06010</a> Bolt	<a href="#">Buy now</a>
41	<a href="#">69P-15746-00</a> Arm	<a href="#">Buy now</a>
42	<a href="#">689-15747-70</a> Link	<a href="#">Buy now</a>
43	<a href="#">90119-06M23</a> Bolt, with washer(61r)	<a href="#">Buy now</a>
44	<a href="#">90387-06013</a> Collar	<a href="#">Buy now</a>
45	<a href="#">90206-05005</a> Washer, wave(656)	<a href="#">Buy now</a>
46	<a href="#">92903-05600</a> Washer, plain (646)	<a href="#">Buy now</a>
47	<a href="#">91490-16010</a> Pin, cotter	<a href="#">Buy now</a>

# Steering



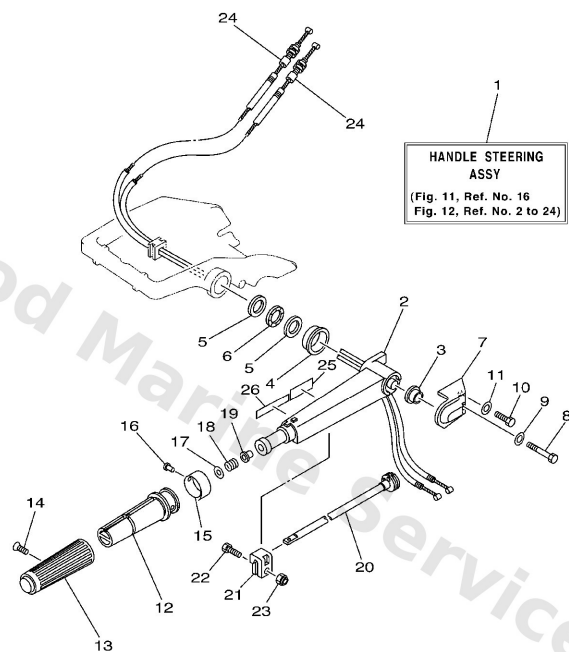
69R3300-3120

**C5**

Ref	Part	
3	<a href="#">90387-13003</a> Collar	<a href="#">Buy now</a>
4	<a href="#">90387-33001</a> Collar	<a href="#">Buy now</a>
5	<a href="#">90201-28013</a> Washer, plate	<a href="#">Buy now</a>
6	<a href="#">90206-28001</a> Washer, wave	<a href="#">Buy now</a>
8	<a href="#">97095-06050</a> Bolt(jf7)	<a href="#">Buy now</a>
9	<a href="#">92995-06600</a> Washer, plain (646)	<a href="#">Buy now</a>
10	<a href="#">97095-06020</a> Bolt(7u8)	<a href="#">Buy now</a>
12	<a href="#">664-42119-00</a> Grip, steering handle	<a href="#">Buy now</a>
13	<a href="#">6F6-42177-A0</a> Rubber, handle	<a href="#">Buy now</a>
14	<a href="#">90149-05M13</a> Screw, countersunk	<a href="#">Buy now</a>
15	<a href="#">6G1-42137-10</a> Indicator, throttle	<a href="#">Buy now</a>
16	<a href="#">90269-02M09</a> Rivet(6I5)	<a href="#">Buy now</a>
17	<a href="#">92903-10600</a> Washer, plate	<a href="#">Buy now</a>
18	<a href="#">90501-23215</a> Spring (655)	<a href="#">Buy now</a>
19	<a href="#">90386-08032</a> Bushing (650)	<a href="#">Buy now</a>



# Steering

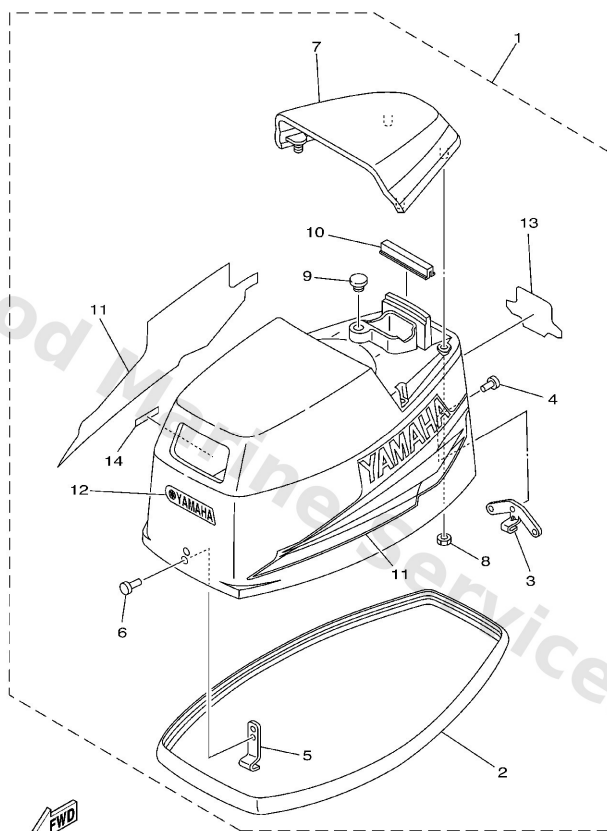


  
69R3300-3120

**C5**

Ref	Part	
20	<a href="#">689-42138-00</a> Lever, throttle	<a href="#">Buy now</a>
21	<a href="#">656-42126-01</a> Piece, friction	<a href="#">Buy now</a>
23	<a href="#">90185-06062</a> Nut selflocking (656)	<a href="#">Buy now</a>
24	<a href="#">61N-26311-00</a> Cable, throttle 1	<a href="#">Buy now</a>
25	<a href="#">6E0-83627-51</a> Label, Caution 7	<a href="#">Buy now</a>
26	<a href="#">6E0-83627-41</a> Label, caution 7	<a href="#">Buy now</a>

## Top Cowling

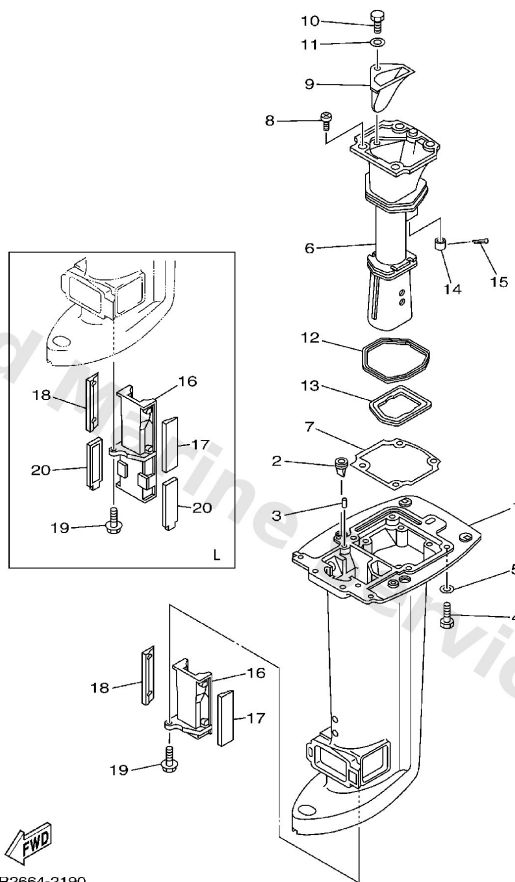


69R3300-3010

**A4**

Ref	Part	
1	<a href="#">69R-42610-30-4D</a> Top Cowling assembly	<a href="#">Buy now</a>
2	<a href="#">6G0-42615-00</a> Seal	<a href="#">Buy now</a>
3	<a href="#">689-42647-00</a> Holder, clamp band	<a href="#">Buy now</a>
4	<a href="#">90266-04M01</a> Rivet (689)	<a href="#">Buy now</a>
5	<a href="#">6G0-42651-02</a> Hook	<a href="#">Buy now</a>
6	<a href="#">90266-04M00</a> Rivet 2 (662)	<a href="#">Buy now</a>
7	<a href="#">69P-42613-00-4D</a> Molding, air duct	<a href="#">Buy now</a>
8	<a href="#">90179-06M24</a> Nut(6j8)	<a href="#">Buy now</a>
9	<a href="#">90480-14M14</a> Grommet (6e0)	<a href="#">Buy now</a>
10	<a href="#">61N-42628-00</a> Seal	<a href="#">Buy now</a>
11	<a href="#">61R-W0070-10</a> Graphic Set	<a href="#">Buy now</a>
12	<a href="#">695-42677-C0</a> Graphic, front	<a href="#">Buy now</a>
13	<a href="#">61R-42678-10</a> Graphic, rear	<a href="#">Buy now</a>
14	<a href="#">6E0-44191-11</a> Indicator, shift	<a href="#">Buy now</a>

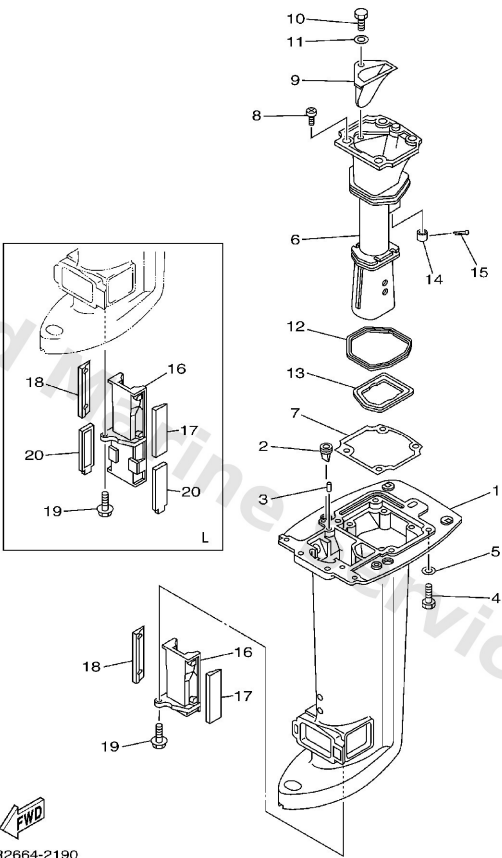
# Upper Casing



D6

Ref	Part	
1	<a href="#">69P-45111-00-4D</a> Casing, upper S	<a href="#">Buy now</a>
1	<a href="#">69P-45111-10-4D</a> Casing, upper L	<a href="#">Buy now</a>
2	<a href="#">65W-42717-00</a> Rubber, seal 2	<a href="#">Buy now</a>
3	<a href="#">93606-12019</a> Pin, dowel (614)	<a href="#">Buy now</a>
4	<a href="#">97075-08030</a> Bolt, hexagon (fj1)	<a href="#">Buy now</a>
5	<a href="#">92995-08600</a> Washer, plain (663)	<a href="#">Buy now</a>
6	<a href="#">69P-41131-01-5B</a> Manifold, ext. 1	<a href="#">Buy now</a>
7	<a href="#">69P-41134-A0</a> Gasket, exhaust manifold	<a href="#">Buy now</a>
8	<a href="#">97880-06016</a> Screw pan head	<a href="#">Buy now</a>
9	<a href="#">69P-41137-00-5B</a> Guide, exhaust	<a href="#">Buy now</a>
10	<a href="#">97095-08020</a> Bolt, hexagon	<a href="#">Buy now</a>
12	<a href="#">69P-41138-00</a> Seal, ext. 1	<a href="#">Buy now</a>
13	<a href="#">69P-41139-00</a> Seal, ext. 2	<a href="#">Buy now</a>
14	<a href="#">6A8-41135-00</a> Gasket, exhaust manifold 3	<a href="#">Buy now</a>
15	<a href="#">91490-30025</a> Pin cotter	<a href="#">Buy now</a>

# Upper Casing



69R2664-2190

**D6**

Ref	Part	
16	<a href="#">69P-47467-00-5B</a> Plate, guide S	<a href="#">Buy now</a>
16	<a href="#">69P-47467-10-5B</a> Plate, guide L	<a href="#">Buy now</a>
17	<a href="#">69P-45127-00</a> Seal	<a href="#">Buy now</a>
18	<a href="#">69P-45128-00</a> Seal 2	<a href="#">Buy now</a>
19	<a href="#">90119-06024</a> Bolt(7u8)	<a href="#">Buy now</a>
20	<a href="#">69P-45159-00</a> Damper L	<a href="#">Buy now</a>

# Disclaimer

This document is provided for convenience only. It is **not** an official Yamaha publication and is **not supplied, endorsed, or approved** by Yamaha Motor Co., Ltd.

Reasonable efforts are made to keep information accurate; however diagrams, part references, supersessions, descriptions, and applicability may contain errors or omissions. Specifications and part availability may change without notice.

You are responsible for confirming the correct parts for your engine (including model code, year, serial range, and any superseded part numbers) before ordering or fitting.