



# Yamaha 2BMH 1986

## Parts Manual

[www.floodmarine.co.uk](http://www.floodmarine.co.uk)

+44 2882 246 539

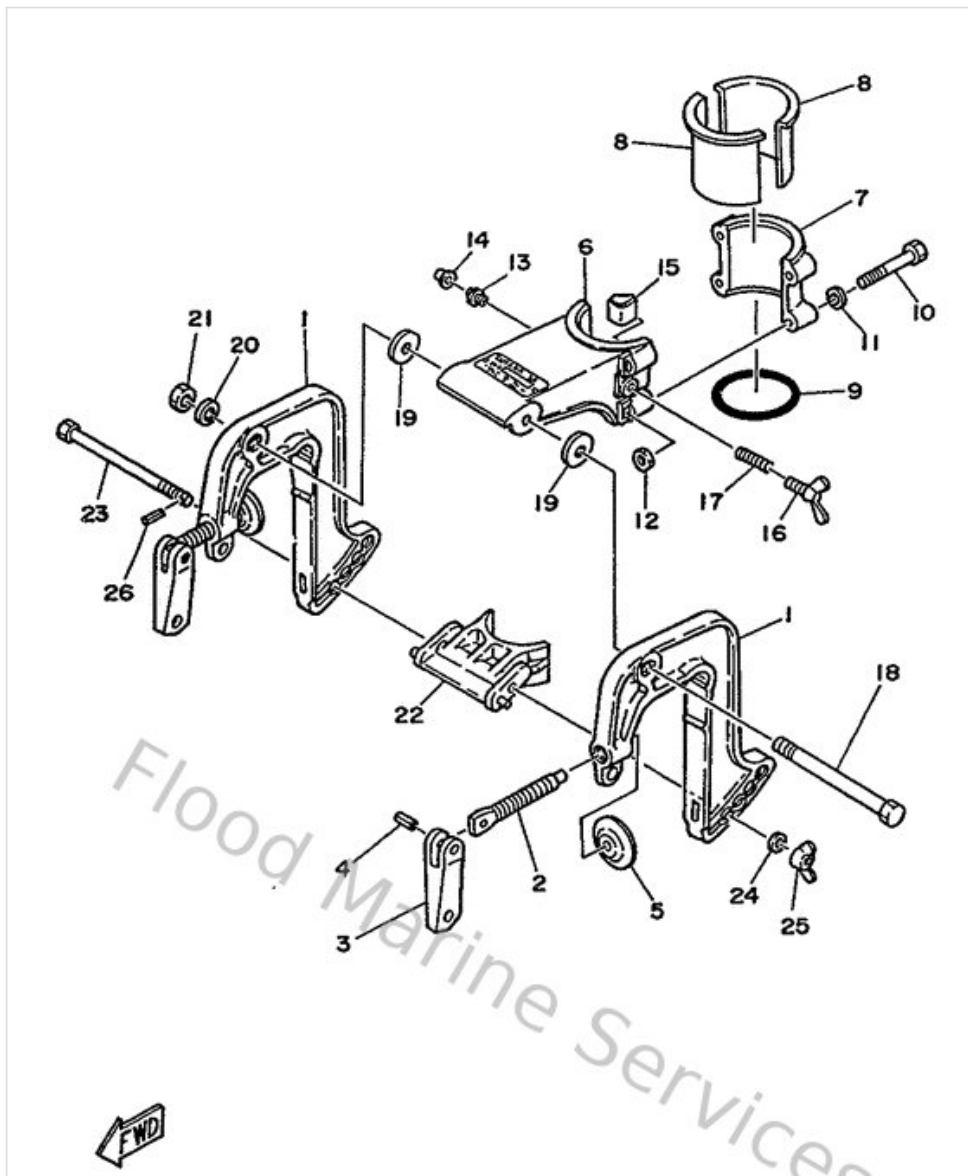
Authorised Yamaha Dealers



# Contents

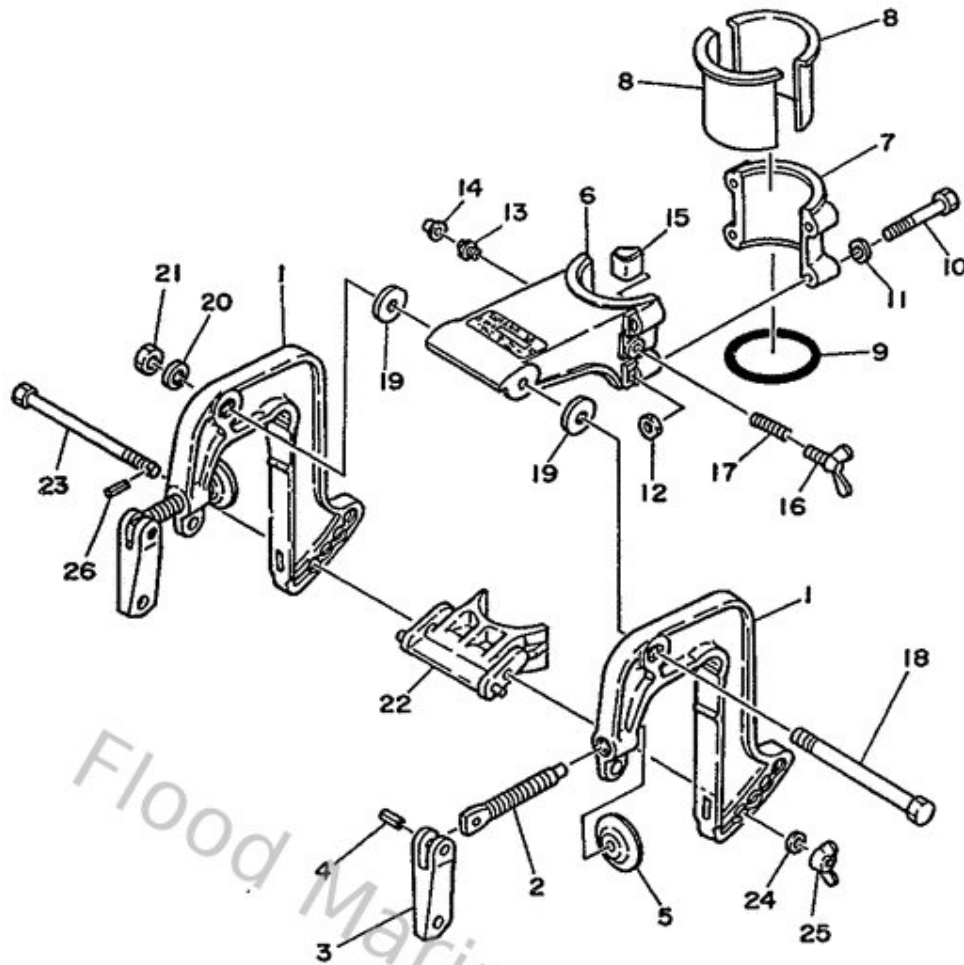
<b>Bracket</b>	3
<b>Carburetor</b>	5
<b>Cowling &amp; Fuel</b>	7
<b>Crankcase, Cylinder &amp; Piston</b>	11
<b>Cylinder &amp; Crankcase</b>	14
<b>Flywheel &amp; Magneto</b>	17
<b>Flywheel Housing</b>	19
<b>Lower &amp; Drive</b>	21
<b>Lower Casing &amp; Drive</b>	24
<b>Repair Kit</b>	27
<b>Starter</b>	30
<b>Upper Casing</b>	31

# Bracket



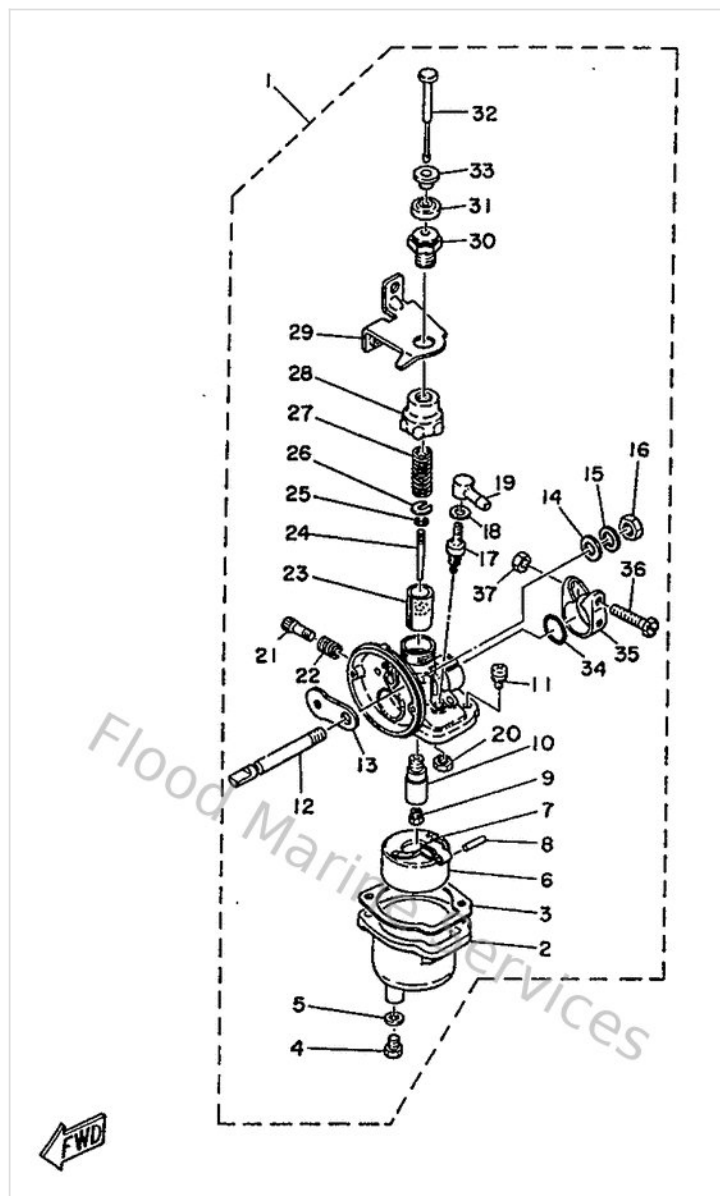
Ref	Part	
2	<a href="#">6E0431160000</a> Screw, transom clamp	<a href="#">Buy now</a>
3	<a href="#">6E0431180000</a> Handle, transom clamp	<a href="#">Buy now</a>
4	<a href="#">9025404M0000</a> Pin(6a1)	<a href="#">Buy now</a>
5	<a href="#">648431140100</a> Pad, transom clamp	<a href="#">Buy now</a>
8	<a href="#">646425370100</a> Bushing, pivot shaft	<a href="#">Buy now</a>
9	<a href="#">932104604400</a> O-ring	<a href="#">Buy now</a>
10	<a href="#">973950604500</a> Bolt, hexagon	<a href="#">Buy now</a>
11	<a href="#">929900660000</a> Washer, plain (646)	<a href="#">Buy now</a>
12	<a href="#">953800660000</a> Nut(661)	<a href="#">Buy now</a>
13	<a href="#">9370006M0300</a> Nipple, grease(6a1)	<a href="#">Buy now</a>
14	<a href="#">663451190000</a> Cap, grease nipple	<a href="#">Buy now</a>
15	<a href="#">646425280000</a> Piece, friction	<a href="#">Buy now</a>
16	<a href="#">901220600400</a> Bolt, wing (646)	<a href="#">Buy now</a>
17	<a href="#">905011227200</a> Spring 6464252401	<a href="#">Buy now</a>
18	<a href="#">901010821700</a> Bolt 6464313100	<a href="#">Buy now</a>

# Bracket



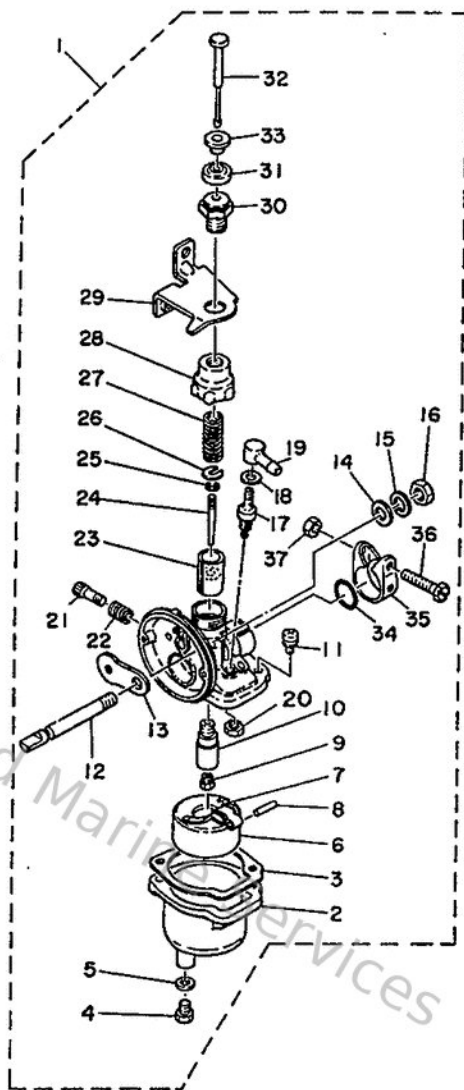
Ref	Part	
19	<a href="#">902020802200</a> Washer 6464313202	<a href="#">Buy now</a>
20	<a href="#">929900810000</a> Ybs67-8 washer, spring	<a href="#">Buy now</a>
21	<a href="#">988800810000</a> Nut, hex.	<a href="#">Buy now</a>
22	<a href="#">6A1433510000</a> Receiver, thrust	<a href="#">Buy now</a>
23	<a href="#">6A1433710000</a> Bolt, receiver	<a href="#">Buy now</a>
24	<a href="#">902010604000</a> Washer 6464337400	<a href="#">Buy now</a>
25	<a href="#">901750600800</a> Nut, Wing	<a href="#">Buy now</a>
26	<a href="#">916902000600</a> Pin, spring (647)	<a href="#">Buy now</a>

# Carburetor



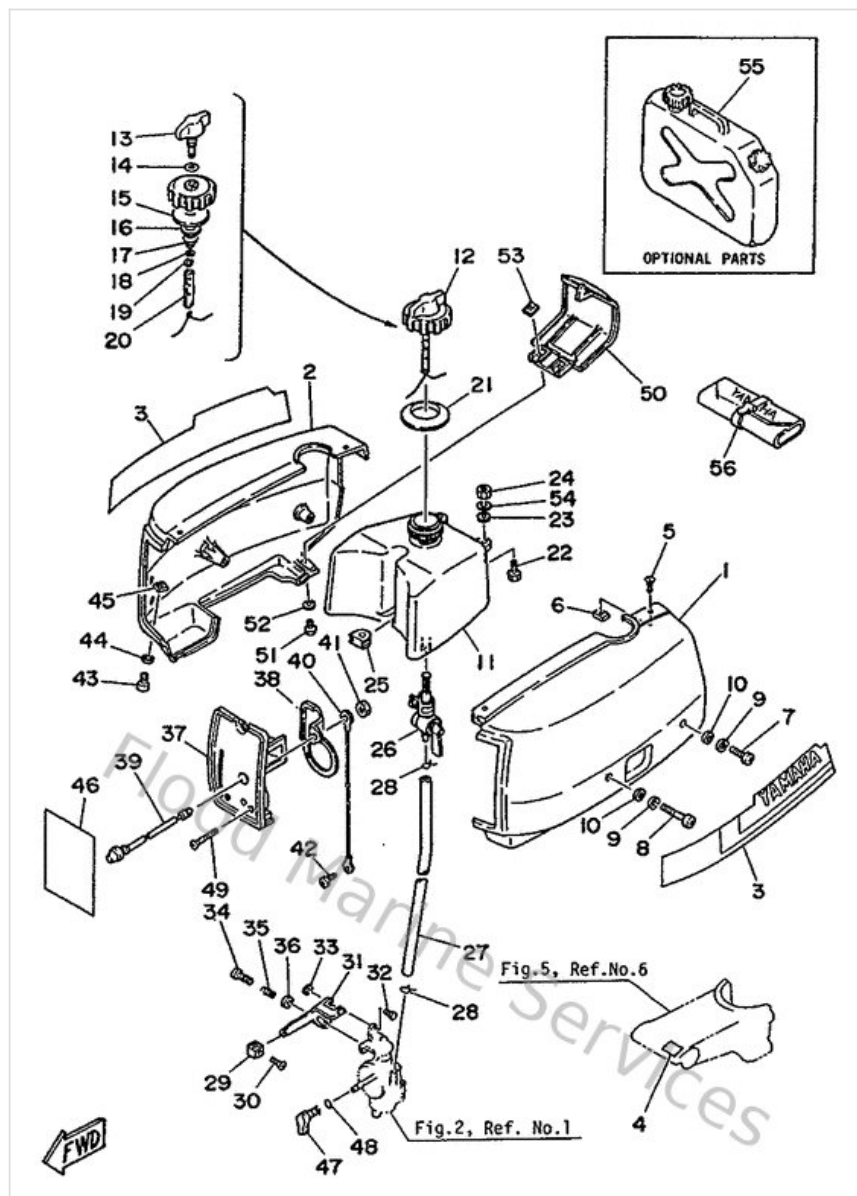
Ref	Part	
1	<a href="#">6A1143010000</a> Carburetor assembly 1	<a href="#">Buy now</a>
2	<a href="#">6A1143810000</a> Body, Float Chamber	<a href="#">Buy now</a>
3	<a href="#">6A1143840000</a> Gasket, float chamber	<a href="#">Buy now</a>
4	<a href="#">6A1143940000</a> Screw, drain	<a href="#">Buy now</a>
5	<a href="#">6A1143980000</a> Gasket	<a href="#">Buy now</a>
7	<a href="#">646143870000</a> Arm, Diaphragm	<a href="#">Buy now</a>
8	<a href="#">6M7143860000</a> Pin, float	<a href="#">Buy now</a>
9	<a href="#">646143434800</a> Jet Main (# 96)	<a href="#">Buy now</a>
11	<a href="#">985030401000</a> Screw, pan head (e56)	<a href="#">Buy now</a>
12	<a href="#">6A1144480000</a> Lever, choke valve	<a href="#">Buy now</a>
13	<a href="#">6A1142170000</a> Valve, Choke	<a href="#">Buy now</a>
14	<a href="#">646143570000</a> Washer	<a href="#">Buy now</a>
15	<a href="#">6A1143560000</a> Washer	<a href="#">Buy now</a>
16	<a href="#">646143580000</a> Nut	<a href="#">Buy now</a>
17	<a href="#">6A1143900000</a> Needle Valve Assembly	<a href="#">Buy now</a>

# Carburetor



Ref	Part	
21	<a href="#">646142110200</a> Screw, pilot adjusting	<a href="#">Buy now</a>
22	<a href="#">646142120100</a> Spring, pilot adjusting	<a href="#">Buy now</a>
23	<a href="#">646143120800</a> Valve, throttle	<a href="#">Buy now</a>
24	<a href="#">6A1141160000</a> Needle	<a href="#">Buy now</a>
25	<a href="#">646141370000</a> Clip	<a href="#">Buy now</a>
26	<a href="#">646141360000</a> Seat, spring	<a href="#">Buy now</a>
27	<a href="#">646143310100</a> Spring, throttle valve	<a href="#">Buy now</a>
28	<a href="#">646141580000</a> Top, mixing chamber	<a href="#">Buy now</a>
29	<a href="#">6A1144970000</a> Stay, throttle wire	<a href="#">Buy now</a>
30	<a href="#">646143210000</a> Screw, throttle	<a href="#">Buy now</a>
32	<a href="#">6A1143140000</a> Bar, throttle	<a href="#">Buy now</a>
33	<a href="#">6A1141630000</a> Spacer	<a href="#">Buy now</a>
34	<a href="#">646142290100</a> O-ring	<a href="#">Buy now</a>
35	<a href="#">6A1141270000</a> Clip	<a href="#">Buy now</a>
36	<a href="#">646141250100</a> Screw	<a href="#">Buy now</a>

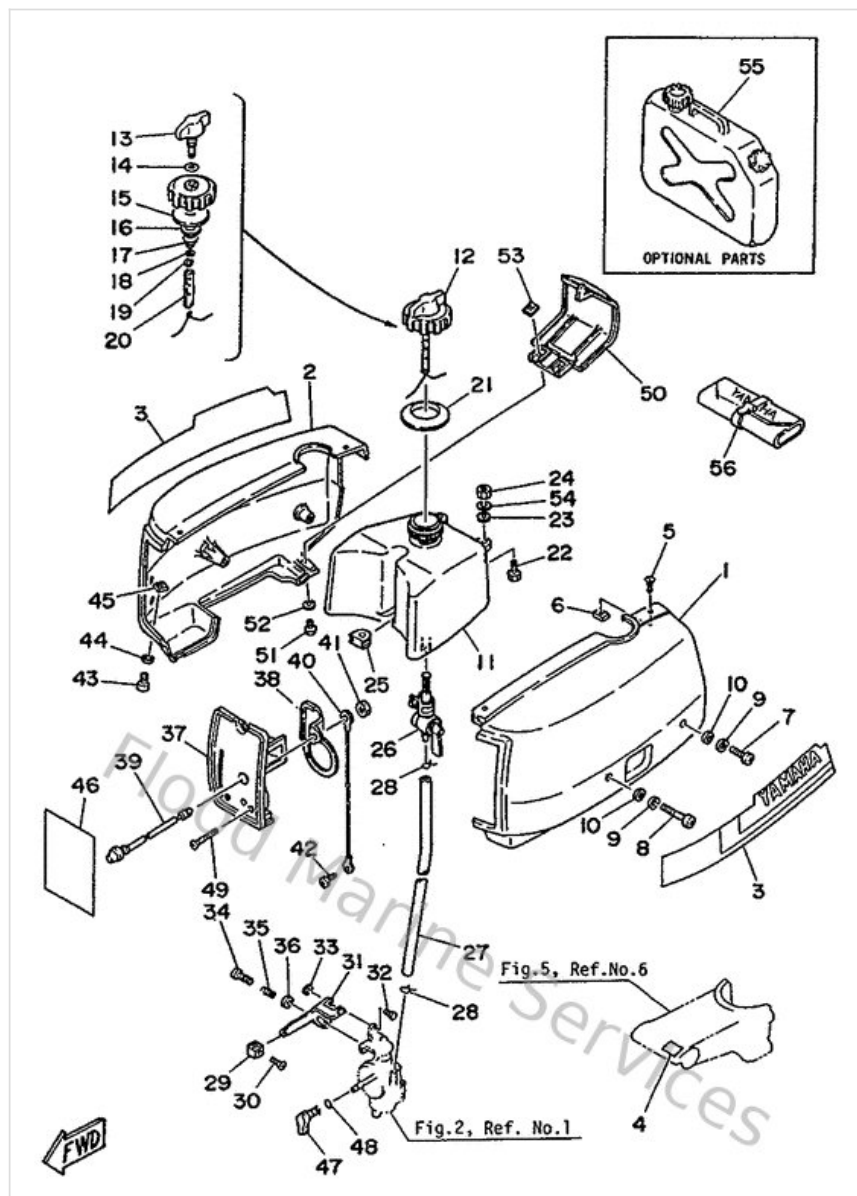
## Cowling & Fuel



Ref	Part	
2	<a href="#">6A1427712000</a> Apron	<a href="#">Buy now</a>
4	<a href="#">6A1427920100</a> Mark (100:1)	<a href="#">Buy now</a>
5	<a href="#">982800501200</a> Screw(617)	<a href="#">Buy now</a>
6	<a href="#">9018305M0000</a> Nut, spring (6a1)	<a href="#">Buy now</a>
7	<a href="#">978850602500</a> Screw, pan head(6b0)	<a href="#">Buy now</a>
8	<a href="#">978900604000</a> Screw pan head	<a href="#">Buy now</a>
9	<a href="#">929950610000</a> Washer(6a1)	<a href="#">Buy now</a>
10	<a href="#">929900660000</a> Washer, plain (646)	<a href="#">Buy now</a>
11	<a href="#">6A1241100100</a> Fuel tank assembly	<a href="#">Buy now</a>
12	<a href="#">6A1246100000</a> Cap assembly	<a href="#">Buy now</a>
13	<a href="#">6A1246310000</a> Screw, air	<a href="#">Buy now</a>
14	<a href="#">904300400500</a> Gasket 6112463200	<a href="#">Buy now</a>
15	<a href="#">904301411700</a> Gasket	<a href="#">Buy now</a>
16	<a href="#">646246150100</a> Gasket, Plate 1	<a href="#">Buy now</a>
17	<a href="#">905011037400</a> Spring, Compression	<a href="#">Buy now</a>



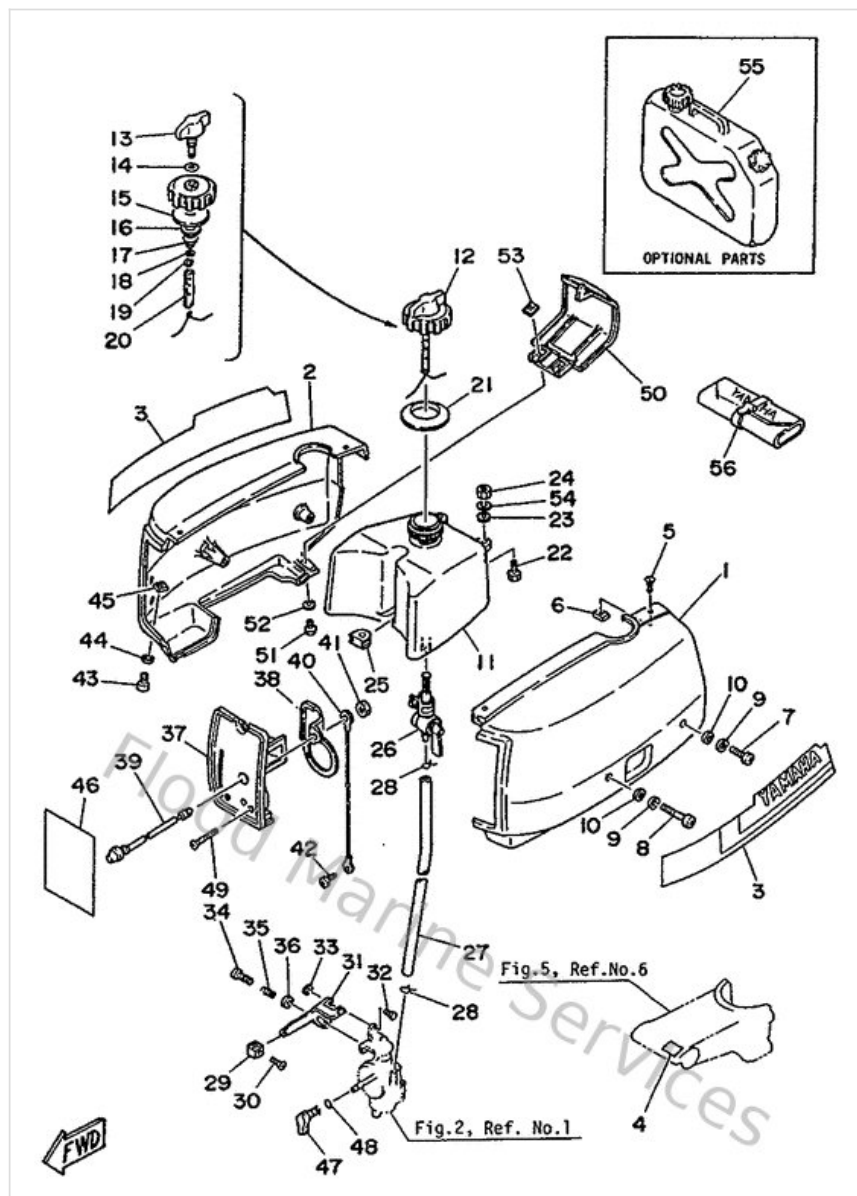
## Cowling & Fuel



Ref	Part	
18	<a href="#">929020420000</a> Ybs66-4 washer, plain	<a href="#">Buy now</a>
19	<a href="#">905011026000</a> Spring, safety 6152463500	<a href="#">Buy now</a>
20	<a href="#">646242410000</a> Indicator	<a href="#">Buy now</a>
21	<a href="#">6A1241980000</a> Seat, rubber	<a href="#">Buy now</a>
23	<a href="#">9020106M3000</a> Washer, plate (6a1)	<a href="#">Buy now</a>
24	<a href="#">953800660000</a> Nut(661)	<a href="#">Buy now</a>
25	<a href="#">6A1241810000</a> Damper, locating	<a href="#">Buy now</a>
26	<a href="#">6A1245000200</a> Fuel cock assembly 1	<a href="#">Buy now</a>
27	<a href="#">6A1243110000</a> Pipe 1	<a href="#">Buy now</a>
28	<a href="#">904670800400</a> Clip, pipe 6162435600	<a href="#">Buy now</a>
29	<a href="#">6A1416370000</a> Knob, magneto control	<a href="#">Buy now</a>
31	<a href="#">6A1412120000</a> Arm, Accel	<a href="#">Buy now</a>
32	<a href="#">6A1143650000</a> Pin, clevis	<a href="#">Buy now</a>
33	<a href="#">990800460000</a> Circlip (eu0)	<a href="#">Buy now</a>
34	<a href="#">978030502500</a> Screw, panhead (a93)	<a href="#">Buy now</a>

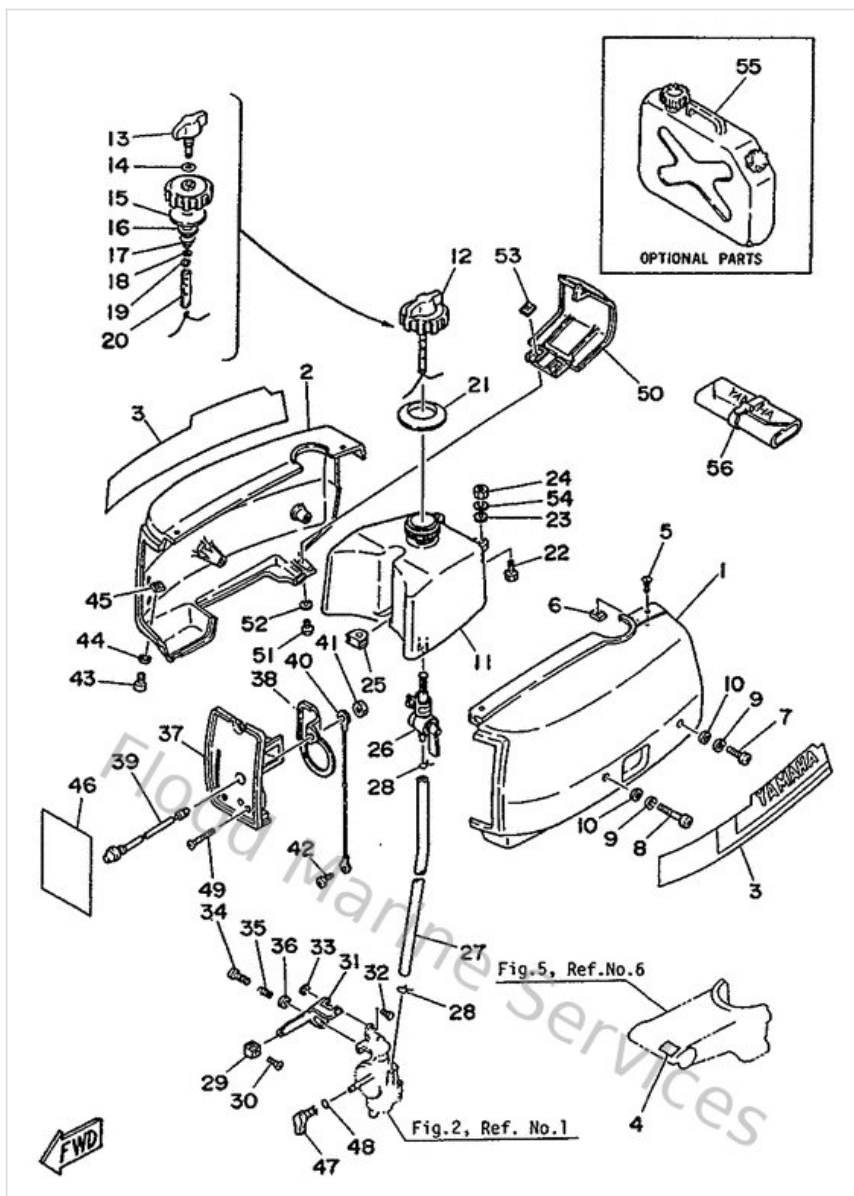


## Cowling & Fuel



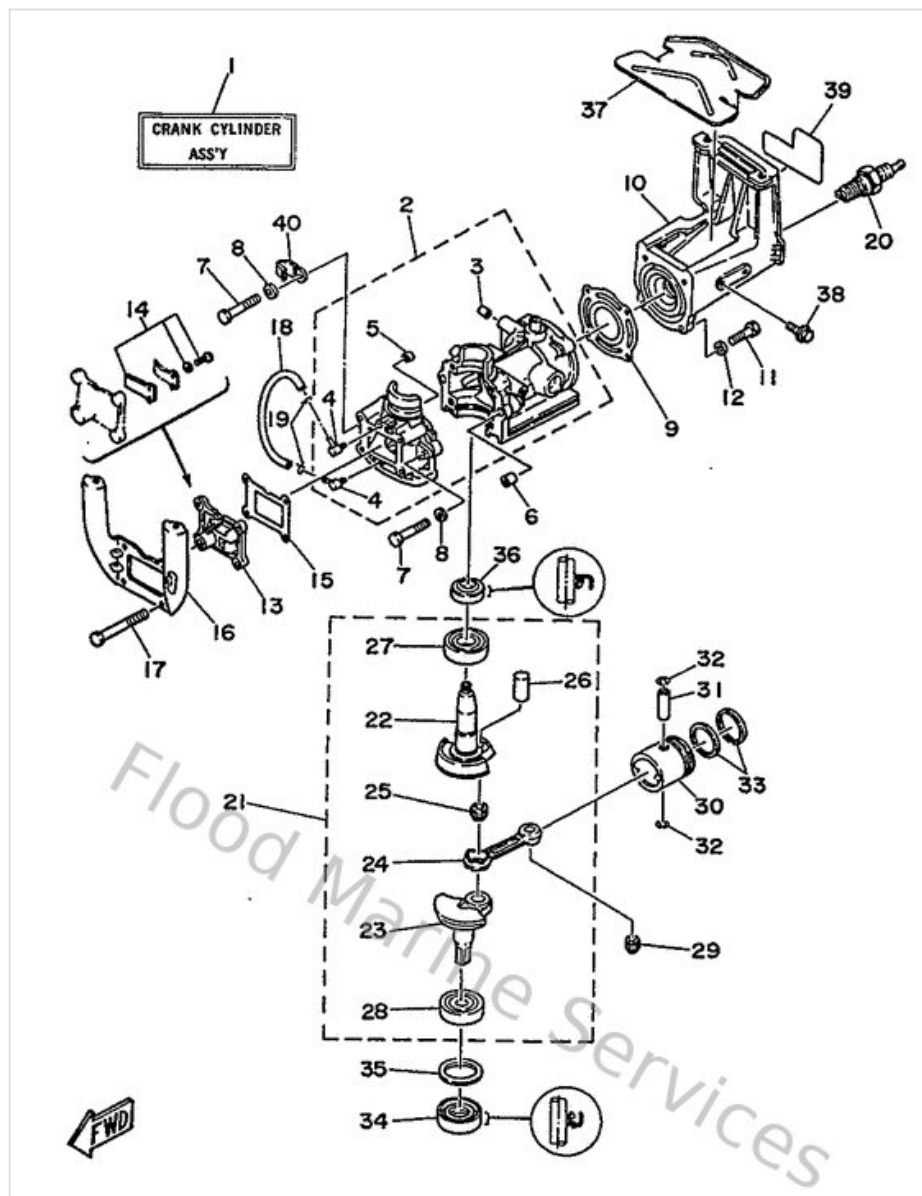
Ref	Part	
35	<a href="#">9050112M1600</a> Spring (6a1)	<a href="#">Buy now</a>
36	<a href="#">929900520000</a> Ybs66-5 washer, plain	<a href="#">Buy now</a>
37	<a href="#">6A1144410100</a> Silencer, intake 2	<a href="#">Buy now</a>
38	<a href="#">6A1144420000</a> Spacer 1	<a href="#">Buy now</a>
39	<a href="#">6A1825500200</a> Stop switch assembly	<a href="#">Buy now</a>
40	<a href="#">6A1825410000</a> Wire, Lead	<a href="#">Buy now</a>
41	<a href="#">953900870000</a> Nut(661)	<a href="#">Buy now</a>
42	<a href="#">985010500800</a> Screw, pan head (7g3)	<a href="#">Buy now</a>
43	<a href="#">978850501000</a> Screw, pan head(62x)	<a href="#">Buy now</a>
44	<a href="#">929900560000</a> Washer, plain (646)	<a href="#">Buy now</a>
45	<a href="#">9017305M0000</a> Nut, square (6a1)	<a href="#">Buy now</a>
46	<a href="#">6A1426770100</a> Graphic Front	<a href="#">Buy now</a>
47	<a href="#">6A1412710000</a> Knob, choke	<a href="#">Buy now</a>
48	<a href="#">9321008M2900</a> O-ring (6a1)	<a href="#">Buy now</a>
49	<a href="#">986800403500</a> Screw.oval Head	<a href="#">Buy now</a>

## Cowling & Fuel



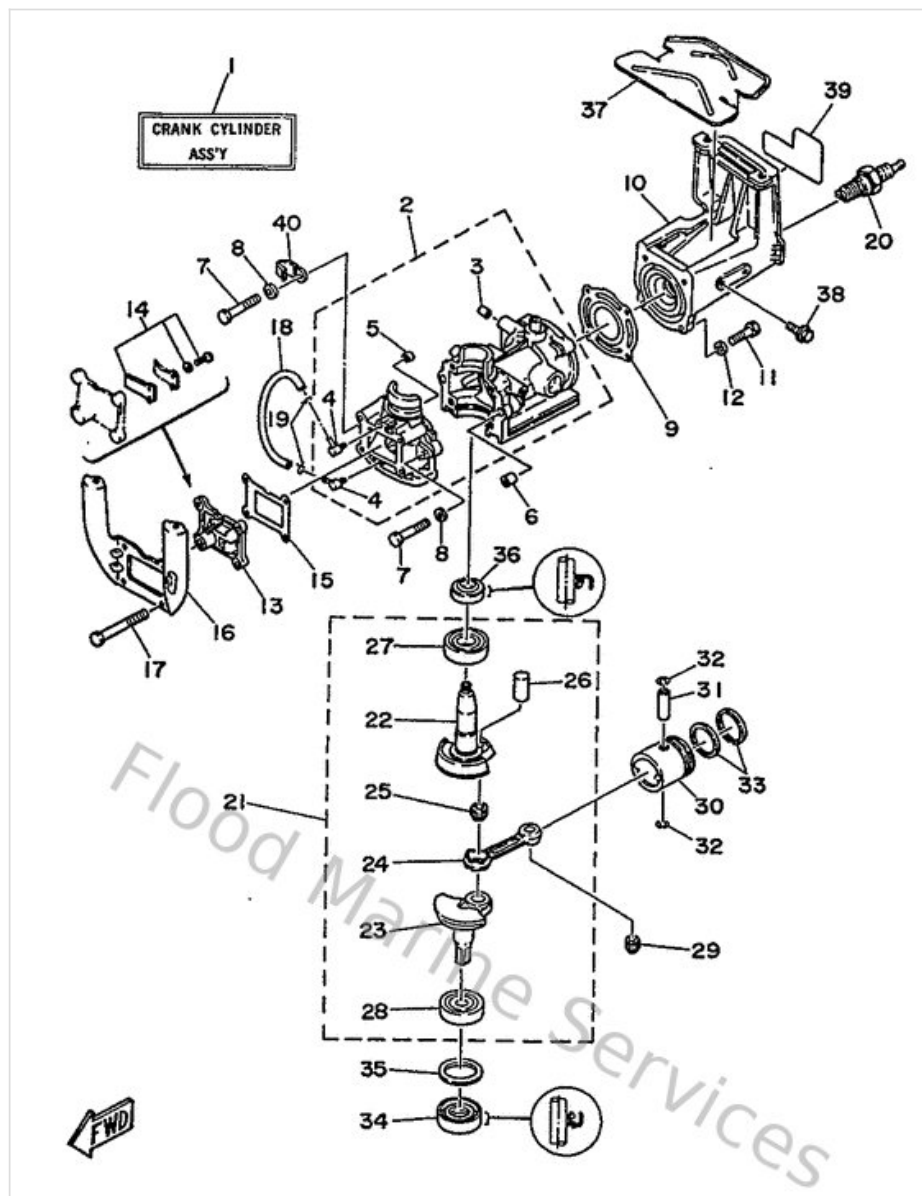
Ref	Part	
51	<a href="#">985800501200</a> Screw,pan head (646)	<a href="#">Buy now</a>
54	<a href="#">929030610000</a> Washer(6a1)	<a href="#">Buy now</a>
56	<a href="#">6A1281000100</a> Tool kit	<a href="#">Buy now</a>

## Crankcase, Cylinder & Piston



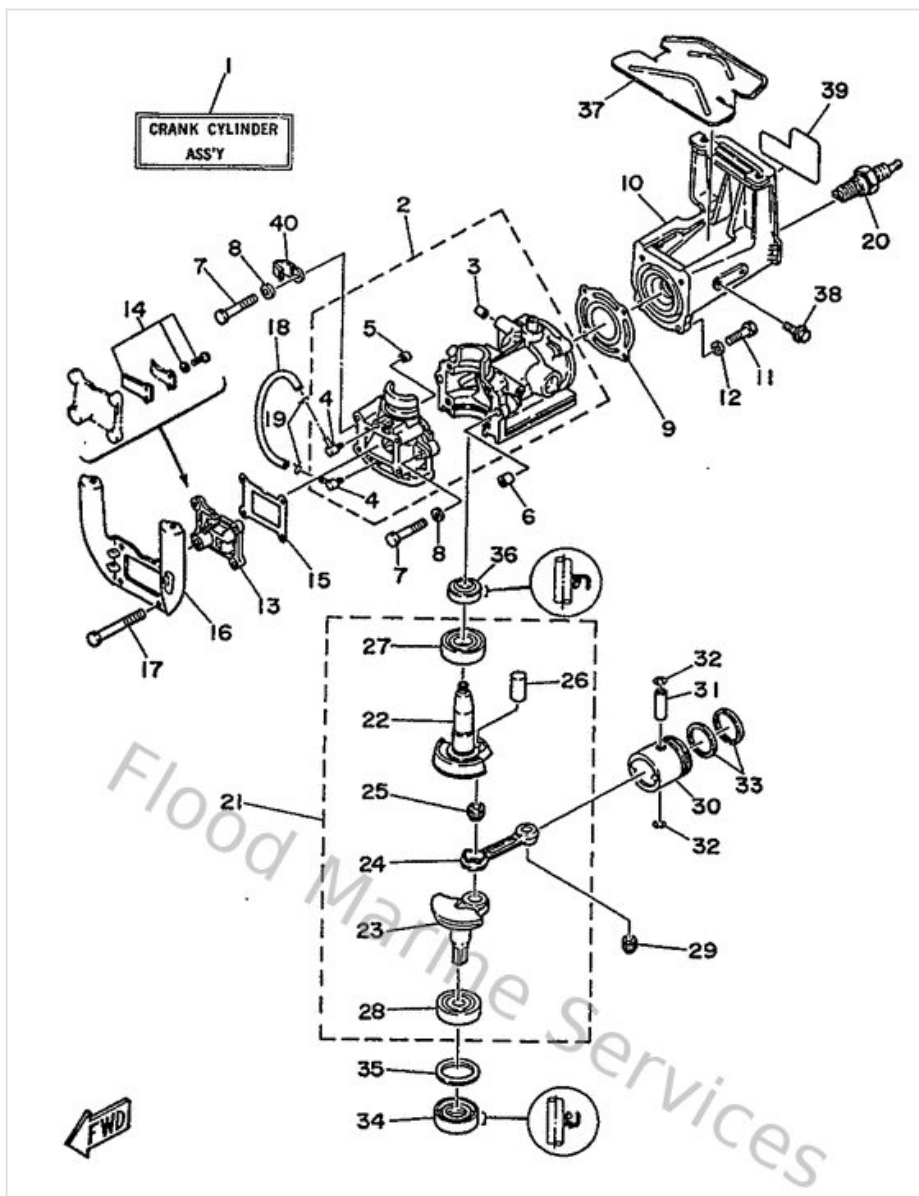
Ref	Part	
2	<a href="#">6A1151006094</a> Crank case assembly	<a href="#">Buy now</a>
3	<a href="#">903360600100</a> Plug, blind 6551131300	<a href="#">Buy now</a>
4	<a href="#">650144850200</a> Pipe, joint	<a href="#">Buy now</a>
5	<a href="#">624113790000</a> Valve, check	<a href="#">Buy now</a>
6	<a href="#">995101011400</a> Pin, dowel(3vd)	<a href="#">Buy now</a>
7	<a href="#">973130604000</a> Bolt (682)	<a href="#">Buy now</a>
8	<a href="#">929030660000</a> Washer, plain (646)	<a href="#">Buy now</a>
9	<a href="#">646111810100</a> Gasket, cylinder head 1	<a href="#">Buy now</a>
10	<a href="#">6A1111110215</a> Head, cylinder 1	<a href="#">Buy now</a>
11	<a href="#">973950602500</a> Bolt	<a href="#">Buy now</a>
12	<a href="#">929900660000</a> Washer, plain (646)	<a href="#">Buy now</a>
13	<a href="#">6A1136100000</a> Reed valve assembly	<a href="#">Buy now</a>
14	<a href="#">6A1W00040000</a> Reed set	<a href="#">Buy now</a>
15	<a href="#">6GDE36210000</a> Gasket, valve seat	<a href="#">Buy now</a>
16	<a href="#">6A1157710000</a> Stay 1	<a href="#">Buy now</a>

# Crankcase, Cylinder & Piston



Ref	Part	
17	<a href="#">973130606000</a> Bolt, hexagon	<a href="#">Buy now</a>
18	<a href="#">9044507MA300</a> Hose (I200)	<a href="#">Buy now</a>
19	<a href="#">904670601600</a> Clip (655)	<a href="#">Buy now</a>
21	<a href="#">6A1114000000</a> Crankshaft assembly	<a href="#">Buy now</a>
22	<a href="#">646114120100</a> Crank 1	<a href="#">Buy now</a>
23	<a href="#">6A1114220000</a> Crank 2	<a href="#">Buy now</a>
24	<a href="#">646116510200</a> Rod, connecting	<a href="#">Buy now</a>
25	<a href="#">933103143900</a> Brg,cyl-cal roller 5g tm	<a href="#">Buy now</a>
26	<a href="#">646116810000</a> Pin, crank 1	<a href="#">Buy now</a>
27	<a href="#">933060040900</a> Brg,r-b 6004 42mm 69g nk	<a href="#">Buy now</a>
28	<a href="#">933063020400</a> Brg,r-b 6302 42mm 82g nk	<a href="#">Buy now</a>
29	<a href="#">93310210M000</a> Bearing (27v)	<a href="#">Buy now</a>
30	<a href="#">646116360100</a> Piston (0.50Mm O/s)	<a href="#">Buy now</a>
31	<a href="#">646116330000</a> Pin,piston	<a href="#">Buy now</a>
32	<a href="#">934501102100</a> Circlip 101116340000	<a href="#">Buy now</a>

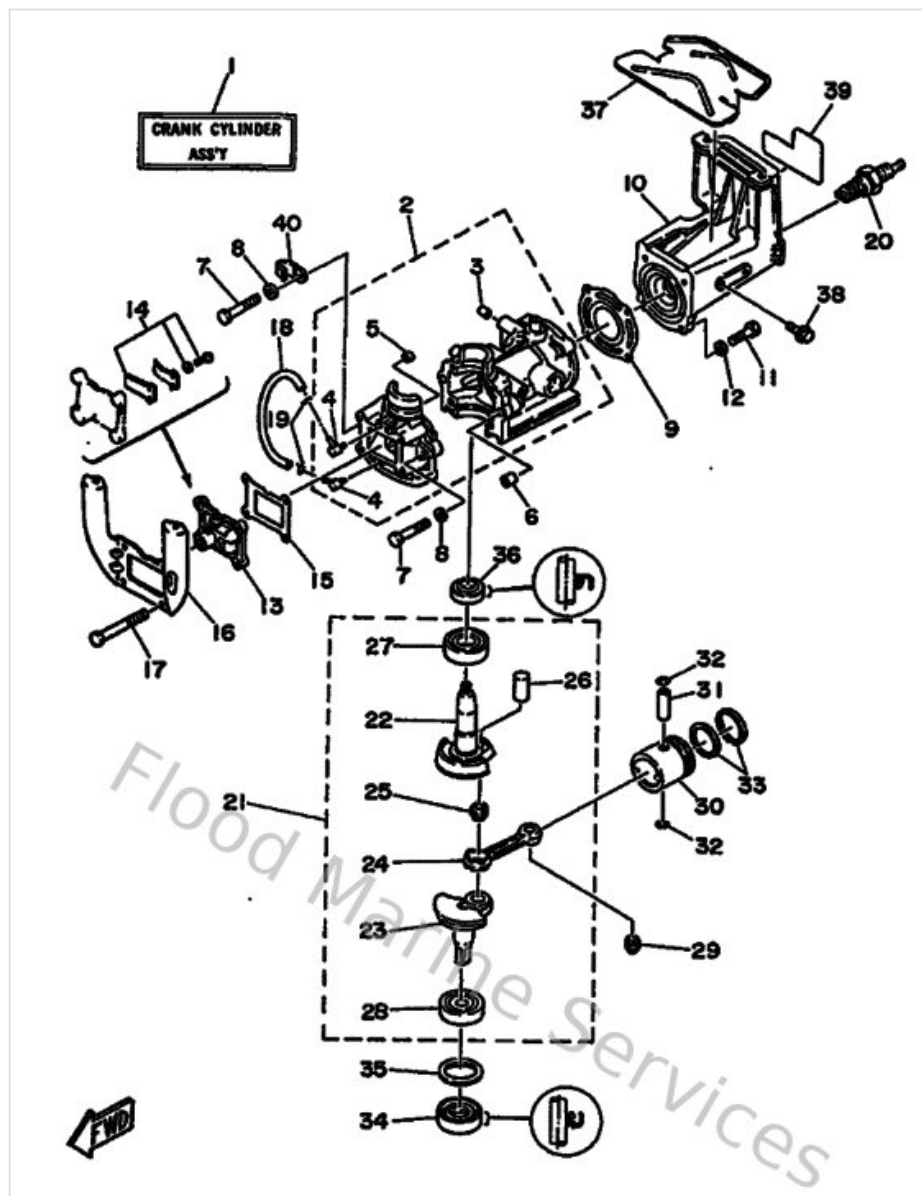
## Crankcase, Cylinder & Piston



Ref	Part	
33	<a href="#">646116010100</a> Piston Ring Set (Std)	<a href="#">Buy now</a>
34	<a href="#">931022010800</a> Oil seal	<a href="#">Buy now</a>
35	<a href="#">902013530000</a> Washer, Plate	<a href="#">Buy now</a>
36	<a href="#">931021508500</a> Oil seal(6a1)	<a href="#">Buy now</a>
37	<a href="#">6A1241410000</a> Protector, fuel tank	<a href="#">Buy now</a>
38	<a href="#">9010506M2300</a> Bolt (6g1)	<a href="#">Buy now</a>
40	<a href="#">904650802800</a> Clamp (1e6)	<a href="#">Buy now</a>

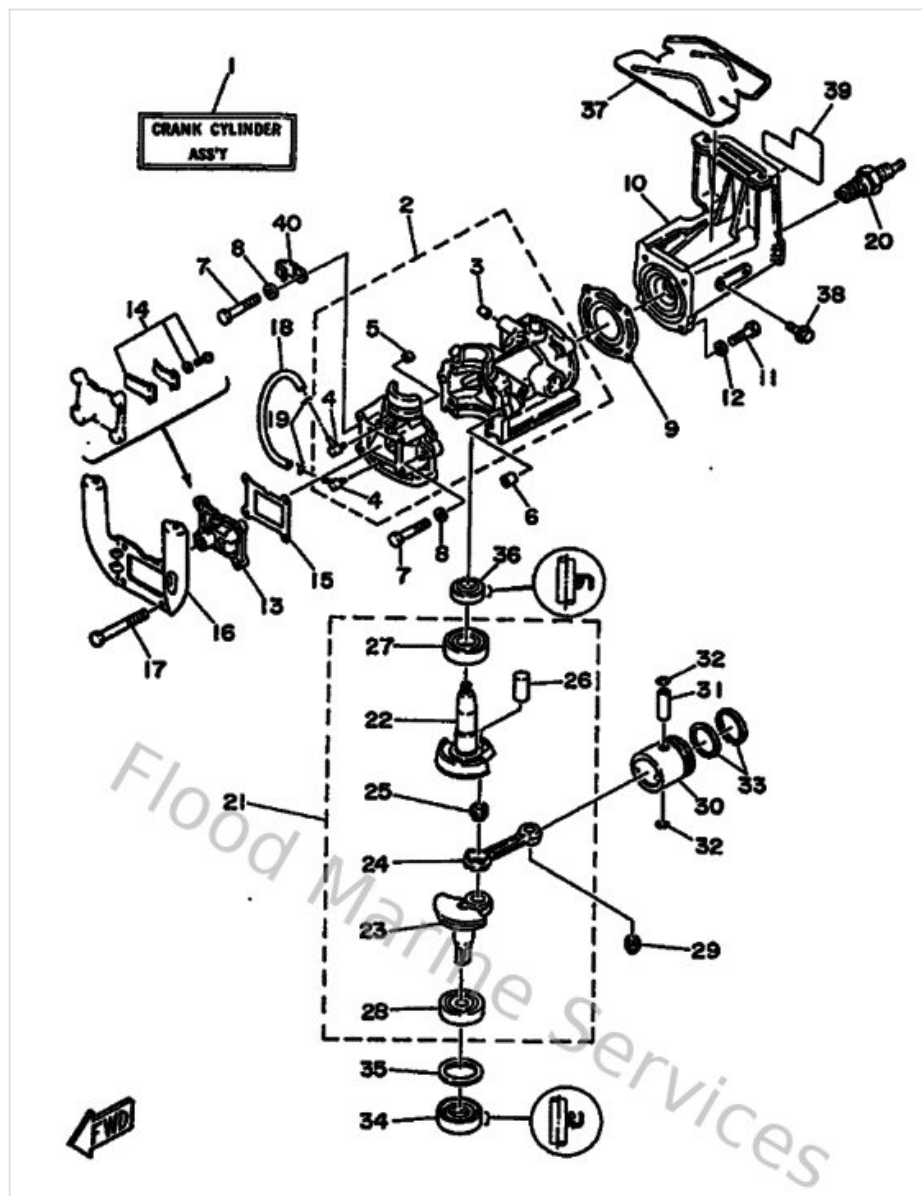


## Cylinder & Crankcase



Ref	Part	
2	<a href="#">6A1151006094</a> Crank case assembly	<a href="#">Buy now</a>
3	<a href="#">903360600100</a> Plug, blind 6551131300	<a href="#">Buy now</a>
4	<a href="#">650144850200</a> Pipe, joint	<a href="#">Buy now</a>
5	<a href="#">624113790000</a> Valve, check	<a href="#">Buy now</a>
6	<a href="#">995101011400</a> Pin, dowel(3vd)	<a href="#">Buy now</a>
7	<a href="#">973130604000</a> Bolt (682)	<a href="#">Buy now</a>
8	<a href="#">929030660000</a> Washer, plain (646)	<a href="#">Buy now</a>
9	<a href="#">646111810100</a> Gasket, cylinder head 1	<a href="#">Buy now</a>
10	<a href="#">6A1111110215</a> Head, cylinder 1	<a href="#">Buy now</a>
11	<a href="#">973950602500</a> Bolt	<a href="#">Buy now</a>
12	<a href="#">929900660000</a> Washer, plain (646)	<a href="#">Buy now</a>
13	<a href="#">6A1136100000</a> Reed valve assembly	<a href="#">Buy now</a>
14	<a href="#">6A1W00040000</a> Reed set	<a href="#">Buy now</a>
15	<a href="#">6GDE36210000</a> Gasket, valve seat	<a href="#">Buy now</a>
16	<a href="#">6A1157710000</a> Stay 1	<a href="#">Buy now</a>

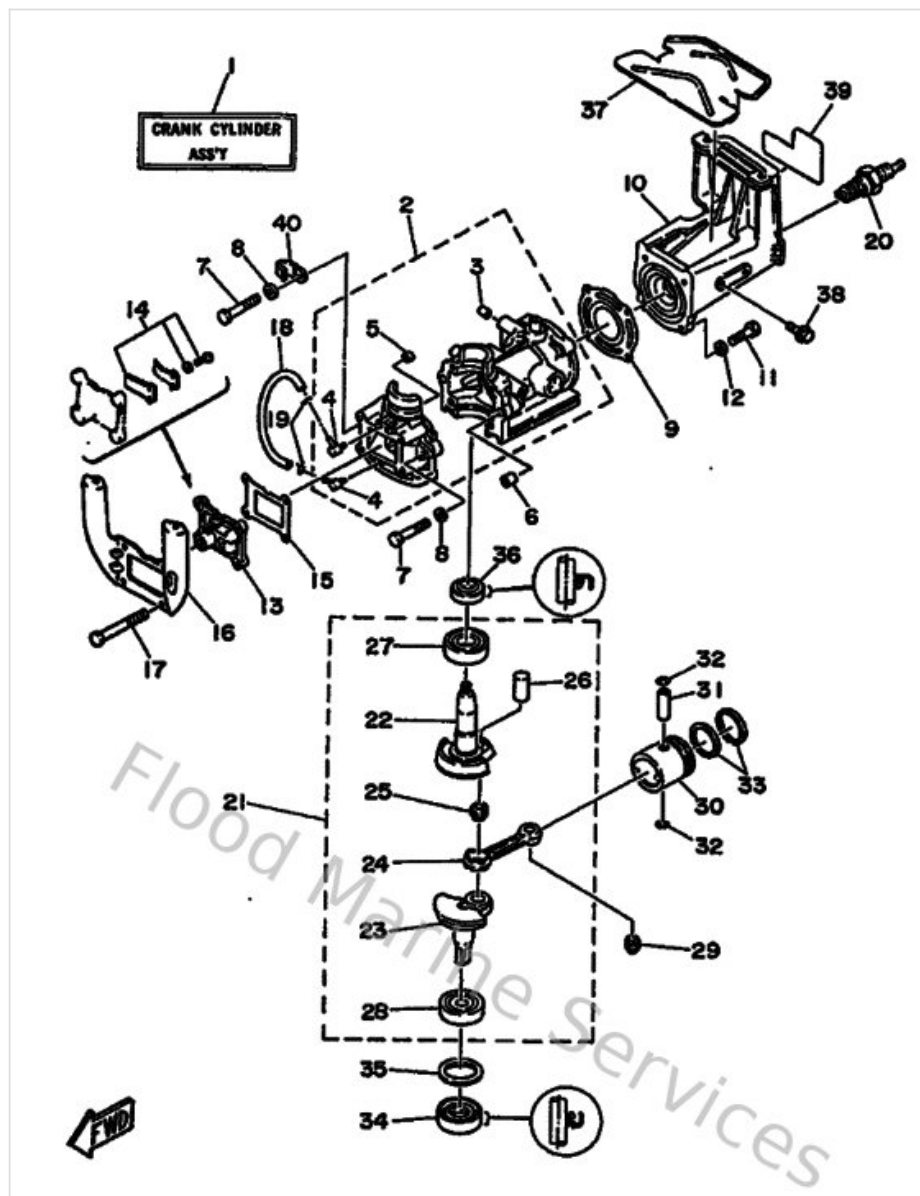
## Cylinder & Crankcase



Ref	Part	
17	<a href="#">973130606000</a> Bolt, hexagon	<a href="#">Buy now</a>
18	<a href="#">9044507MA300</a> Hose (I200)	<a href="#">Buy now</a>
19	<a href="#">904670601600</a> Clip (655)	<a href="#">Buy now</a>
21	<a href="#">6A1114000000</a> Crankshaft assembly	<a href="#">Buy now</a>
22	<a href="#">646114120100</a> Crank 1	<a href="#">Buy now</a>
23	<a href="#">6A1114220000</a> Crank 2	<a href="#">Buy now</a>
24	<a href="#">646116510200</a> Rod, connecting	<a href="#">Buy now</a>
25	<a href="#">933103143900</a> Brg,cyl-cal roller 5g tm	<a href="#">Buy now</a>
26	<a href="#">646116810000</a> Pin, crank 1	<a href="#">Buy now</a>
27	<a href="#">933060040900</a> Brg,r-b 6004 42mm 69g nk	<a href="#">Buy now</a>
28	<a href="#">933063020400</a> Brg,r-b 6302 42mm 82g nk	<a href="#">Buy now</a>
29	<a href="#">93310210M000</a> Bearing (27v)	<a href="#">Buy now</a>
30	<a href="#">646116360100</a> Piston (0.50Mm O/s)	<a href="#">Buy now</a>
31	<a href="#">646116330000</a> Pin,piston	<a href="#">Buy now</a>
32	<a href="#">934501102100</a> Circlip 101116340000	<a href="#">Buy now</a>

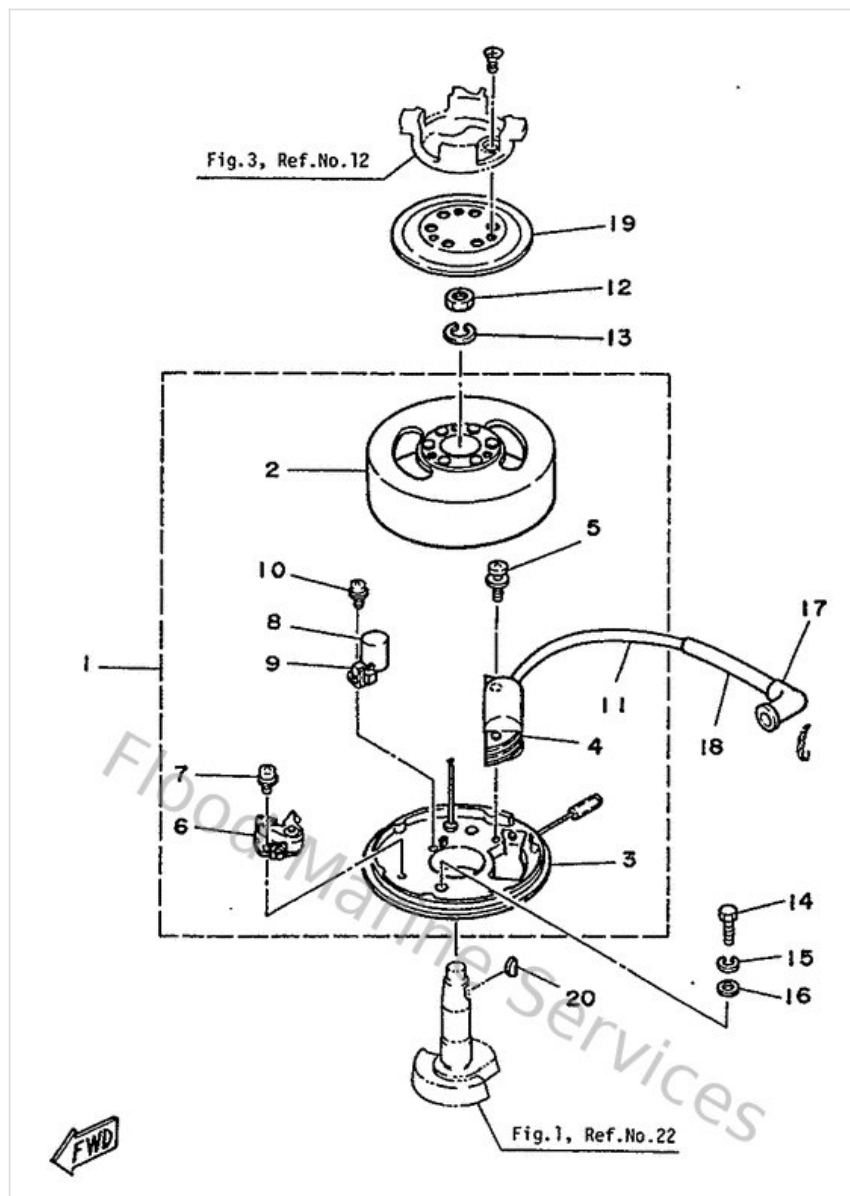


## Cylinder & Crankcase



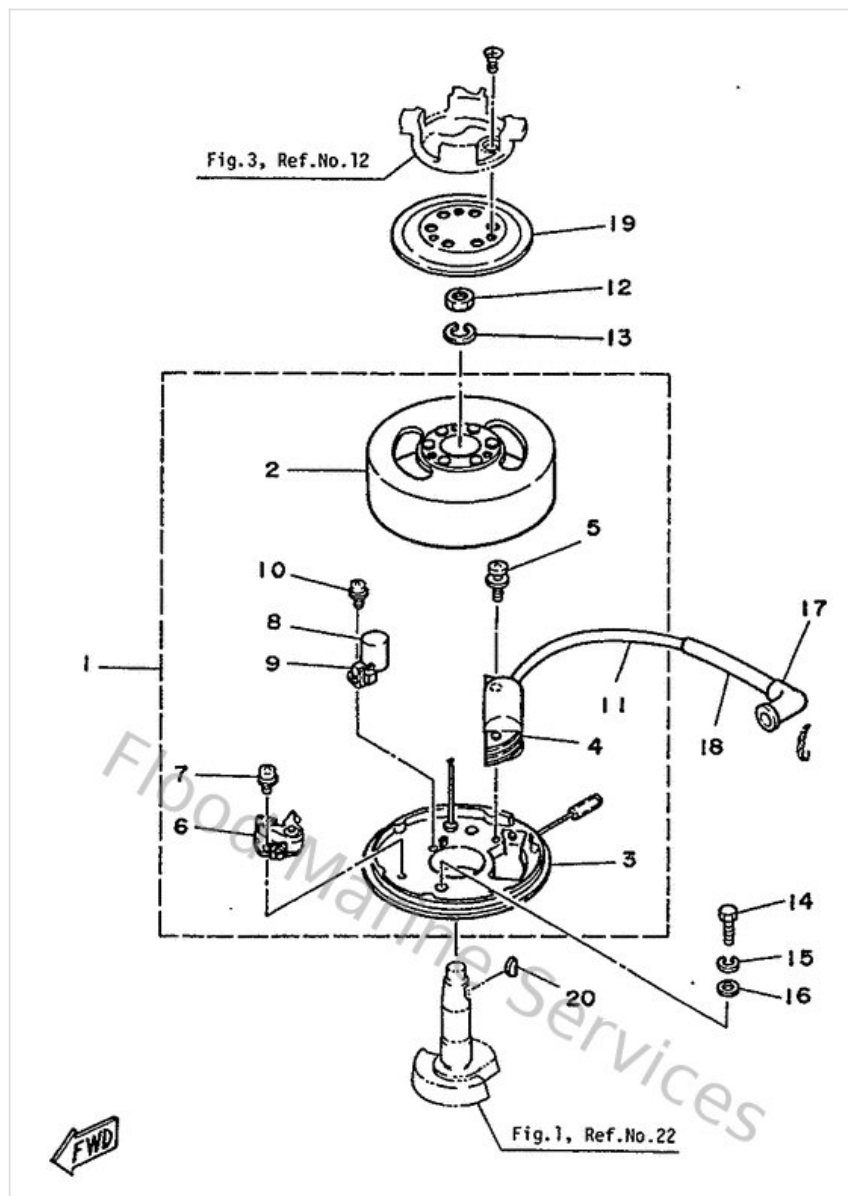
Ref	Part	
33	<a href="#">646116010100</a> Piston Ring Set (Std)	<a href="#">Buy now</a>
34	<a href="#">931022010800</a> Oil seal	<a href="#">Buy now</a>
35	<a href="#">902013530000</a> Washer, Plate	<a href="#">Buy now</a>
36	<a href="#">931021508500</a> Oil seal(6a1)	<a href="#">Buy now</a>
37	<a href="#">6A1241410000</a> Protector, fuel tank	<a href="#">Buy now</a>
38	<a href="#">9010506M2300</a> Bolt (6g1)	<a href="#">Buy now</a>
40	<a href="#">904650802800</a> Clamp (1e6)	<a href="#">Buy now</a>

## Flywheel & Magneto



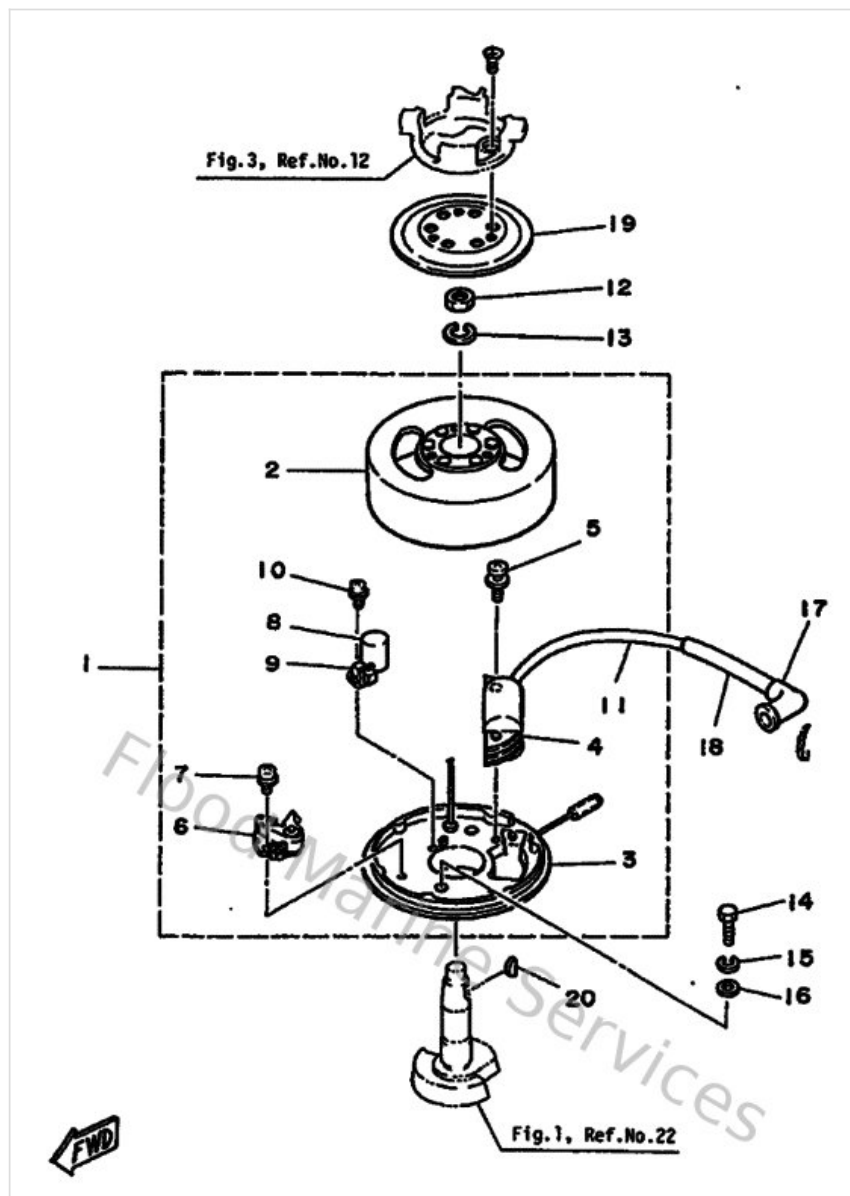
Ref	Part	
1	<a href="#">6A1813002000</a> Flywheel Magneto assembly	<a href="#">Buy now</a>
3	<a href="#">6A1813092000</a> Base, Magneto	<a href="#">Buy now</a>
4	<a href="#">6A1813112000</a> Coil, Ignition 1	<a href="#">Buy now</a>
5	<a href="#">901590504000</a> Screw, pan head(4my)	<a href="#">Buy now</a>
6	<a href="#">806813212000</a> Contact breaker assembly (l.h)	<a href="#">Buy now</a>
7	<a href="#">985070401000</a> Screw, pan head(6g8)	<a href="#">Buy now</a>
8	<a href="#">624813252000</a> Condenser	<a href="#">Buy now</a>
9	<a href="#">120813312000</a> Lubricator	<a href="#">Buy now</a>
10	<a href="#">110813462100</a> Screw, pan head	<a href="#">Buy now</a>
12	<a href="#">953031060000</a> Nut(3bm)	<a href="#">Buy now</a>
13	<a href="#">929901010000</a> Ybs67-10 washer, spring	<a href="#">Buy now</a>
14	<a href="#">973130603000</a> Bolt	<a href="#">Buy now</a>
15	<a href="#">929030610000</a> Washer(6a1)	<a href="#">Buy now</a>
16	<a href="#">929900660000</a> Washer, plain (646)	<a href="#">Buy now</a>
17	<a href="#">6G1823702000</a> Plug cap assembly	<a href="#">Buy now</a>

## Flywheel & Magneto



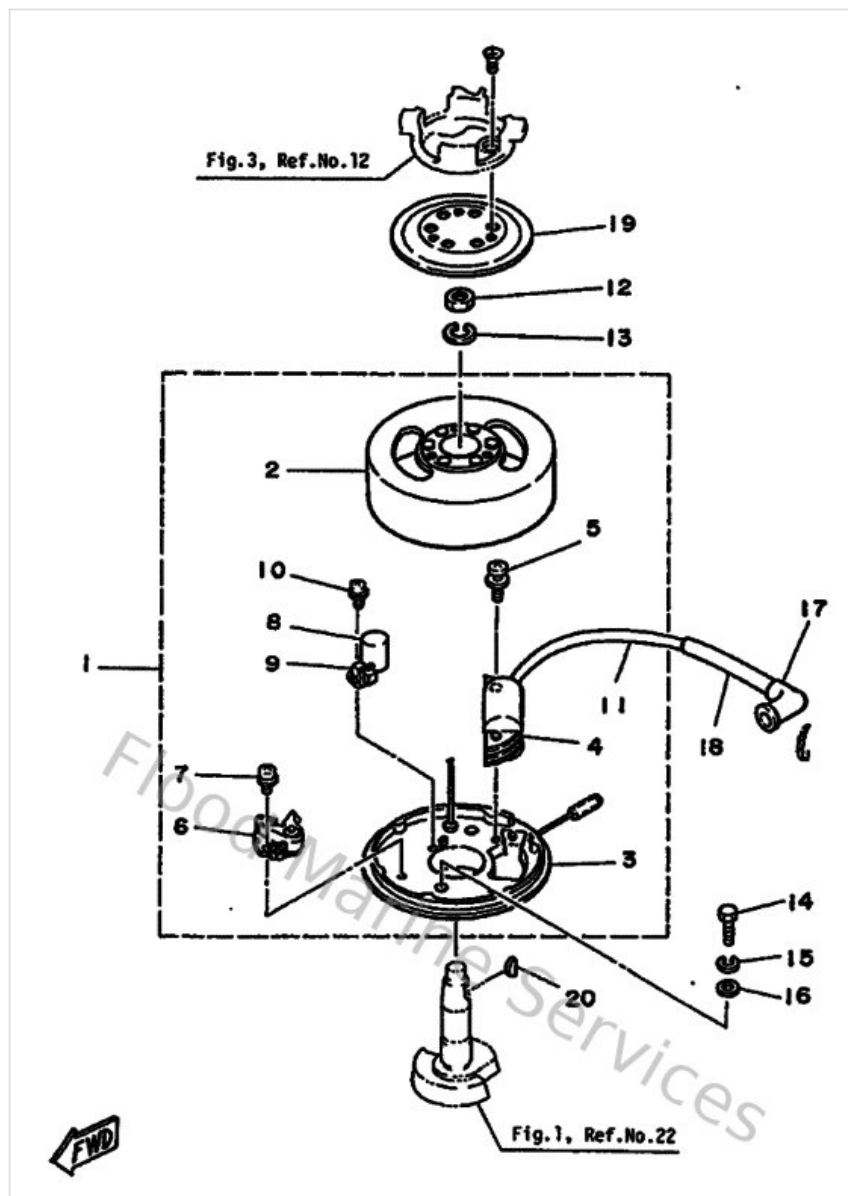
Ref	Part	
19	<a href="#">6A1813620000</a> Cover, hole 1	<a href="#">Buy now</a>
20	<a href="#">902800400600</a> Key, woodruff(6a1)	<a href="#">Buy now</a>

# Flywheel Housing



Ref	Part	
1	<a href="#">6A1813002000</a> Flywheel Magneto assembly	<a href="#">Buy now</a>
3	<a href="#">6A1813092000</a> Base, Magneto	<a href="#">Buy now</a>
4	<a href="#">6A1813112000</a> Coil, Ignition 1	<a href="#">Buy now</a>
5	<a href="#">901590504000</a> Screw, pan head(4my)	<a href="#">Buy now</a>
6	<a href="#">806813212000</a> Contact breaker assembly (l.h)	<a href="#">Buy now</a>
7	<a href="#">985070401000</a> Screw, pan head(6g8)	<a href="#">Buy now</a>
8	<a href="#">624813252000</a> Condenser	<a href="#">Buy now</a>
9	<a href="#">120813312000</a> Lubricator	<a href="#">Buy now</a>
10	<a href="#">110813462100</a> Screw, pan head	<a href="#">Buy now</a>
12	<a href="#">953031060000</a> Nut(3bm)	<a href="#">Buy now</a>
13	<a href="#">929901010000</a> Ybs67-10 washer, spring	<a href="#">Buy now</a>
14	<a href="#">973130603000</a> Bolt	<a href="#">Buy now</a>
15	<a href="#">929030610000</a> Washer(6a1)	<a href="#">Buy now</a>
16	<a href="#">929900660000</a> Washer, plain (646)	<a href="#">Buy now</a>
17	<a href="#">6G1823702000</a> Plug cap assembly	<a href="#">Buy now</a>

# Flywheel Housing



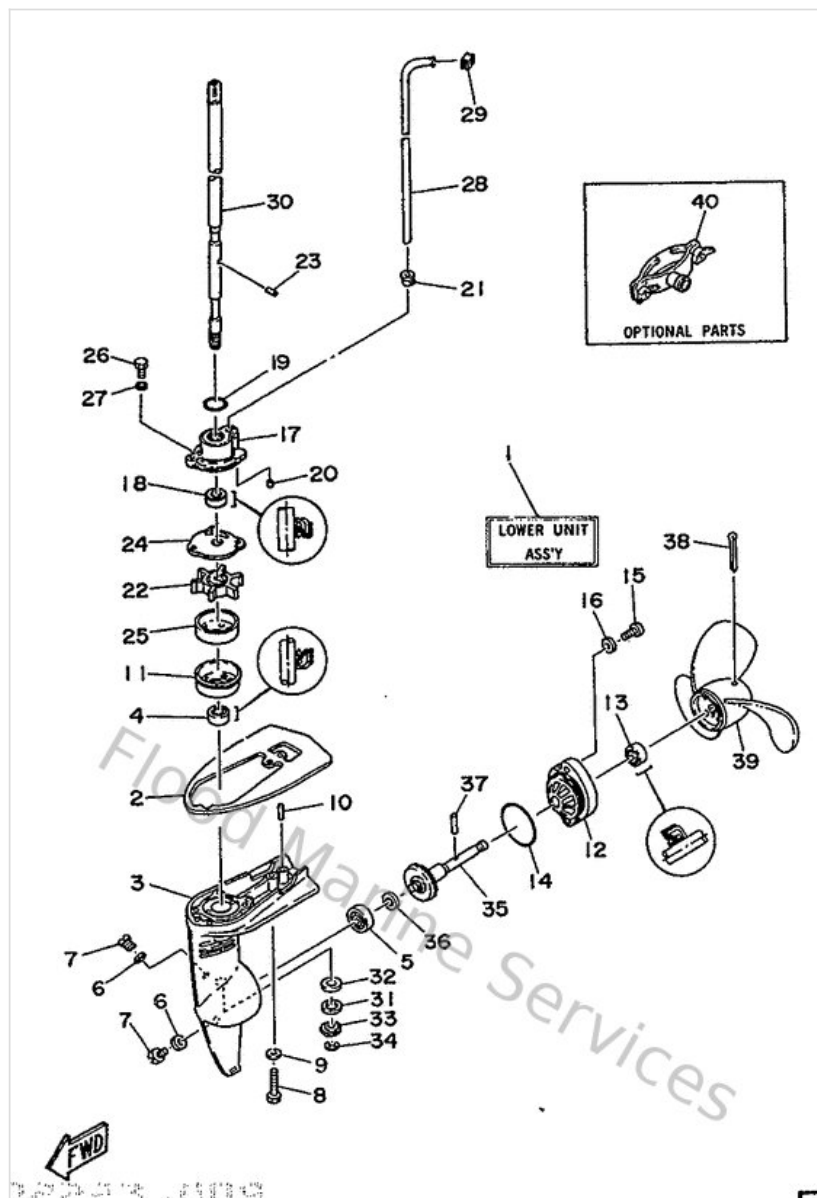
Ref	Part	
19	<a href="#">6A1813620000</a> Cover, hole 1	<a href="#">Buy now</a>
20	<a href="#">902800400600</a> Key, woodruff(6a1)	<a href="#">Buy now</a>

Lower & Drive



	Pin,dowel (040)	
--	-----------------	--

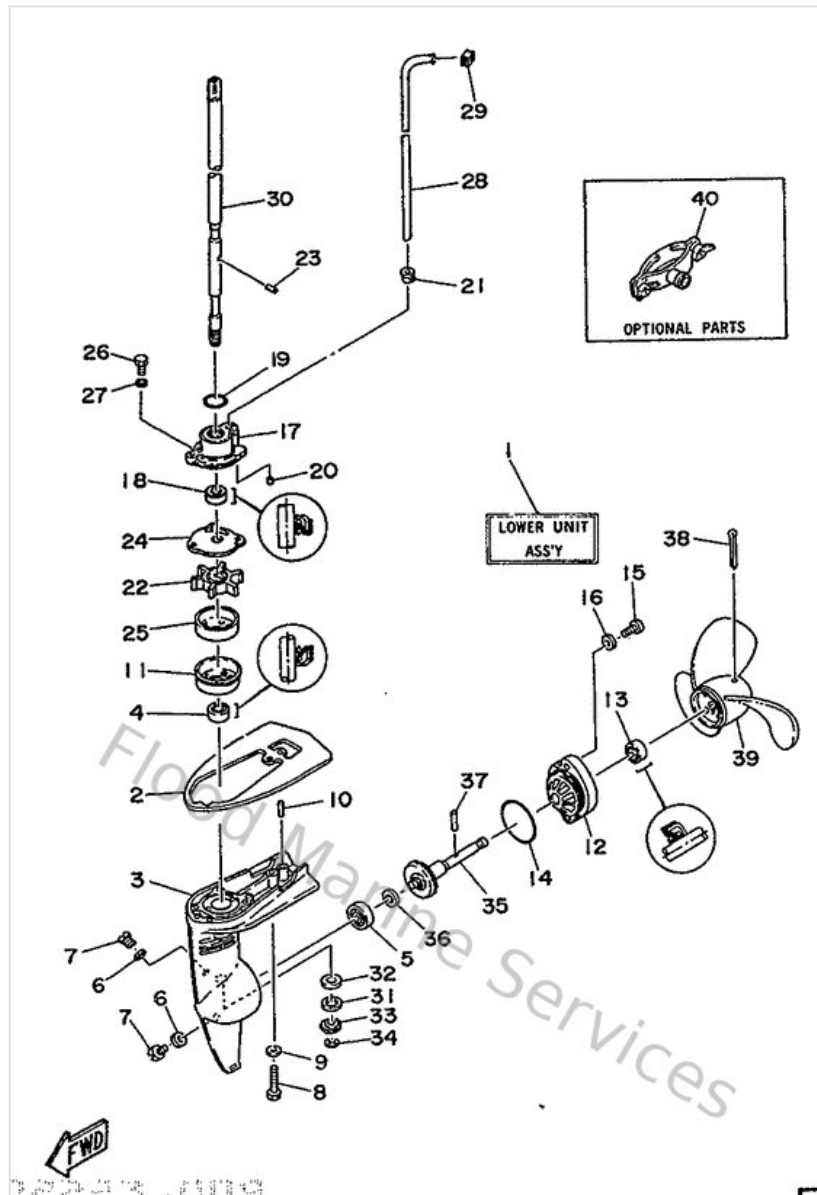
## Lower & Drive



Ref	Part	
21	<a href="#">646443660100</a> Damper, water seal 2	<a href="#">Buy now</a>
22	<a href="#">646443520100</a> Impeller	<a href="#">Buy now</a>
23	<a href="#">936040906600</a> Pin, dowel	<a href="#">Buy now</a>
24	<a href="#">646443230000</a> Outer plate, cartridge	<a href="#">Buy now</a>
25	<a href="#">6GDG43220000</a> Insert, cartridge	<a href="#">Buy now</a>
26	<a href="#">973900501600</a> Bolt, with washer	<a href="#">Buy now</a>
27	<a href="#">929900560000</a> Washer, plain (646)	<a href="#">Buy now</a>
28	<a href="#">6A1443610000</a> Tube, water	<a href="#">Buy now</a>
30	<a href="#">6A1455100000</a> Drive shaft assembly	<a href="#">Buy now</a>
31	<a href="#">9020111M4900</a> Washer, plate (6e0)	<a href="#">Buy now</a>
33	<a href="#">646455510000</a> Pinion	<a href="#">Buy now</a>
34	<a href="#">990010560000</a> Circlip(22k)	<a href="#">Buy now</a>
35	<a href="#">646455600000</a> Gear	<a href="#">Buy now</a>
36	<a href="#">646455672000</a> Shim (t:0.50mm)	<a href="#">Buy now</a>
37	<a href="#">902500300200</a> Pin, straight(6a1)	<a href="#">Buy now</a>

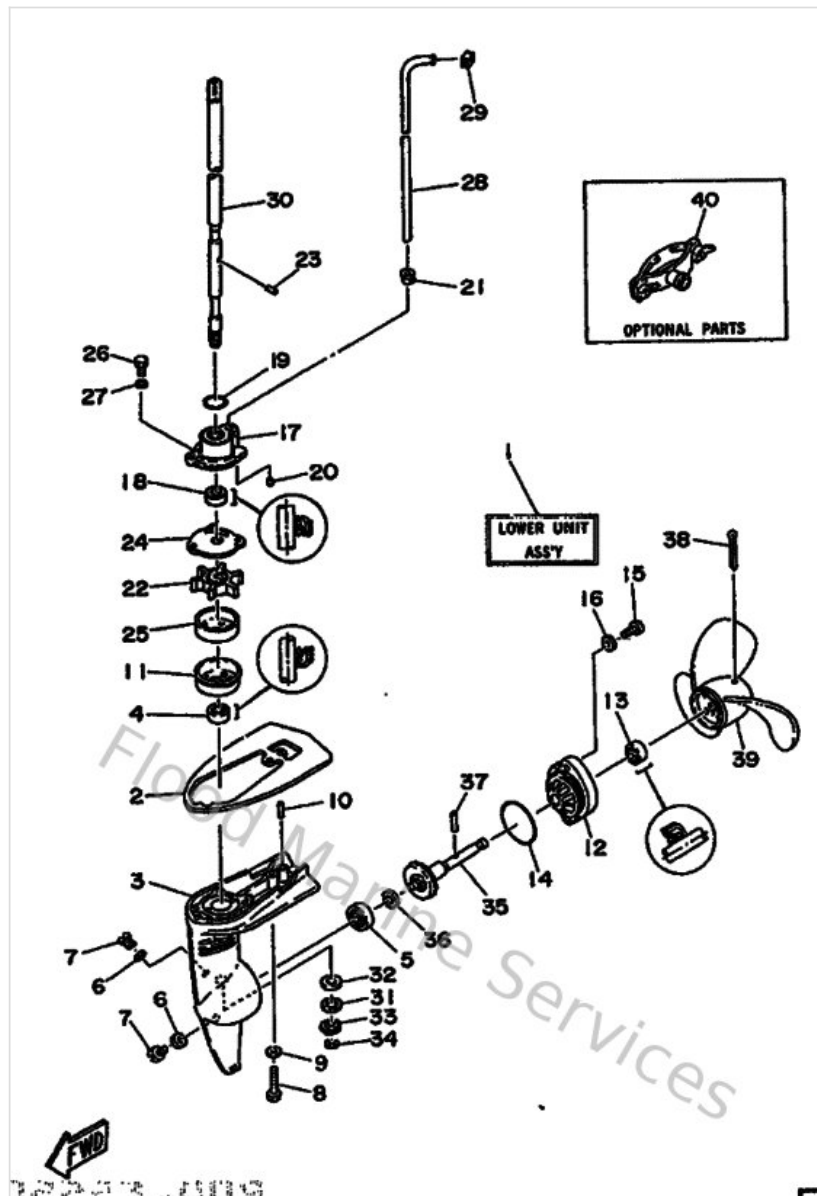


## Lower & Drive



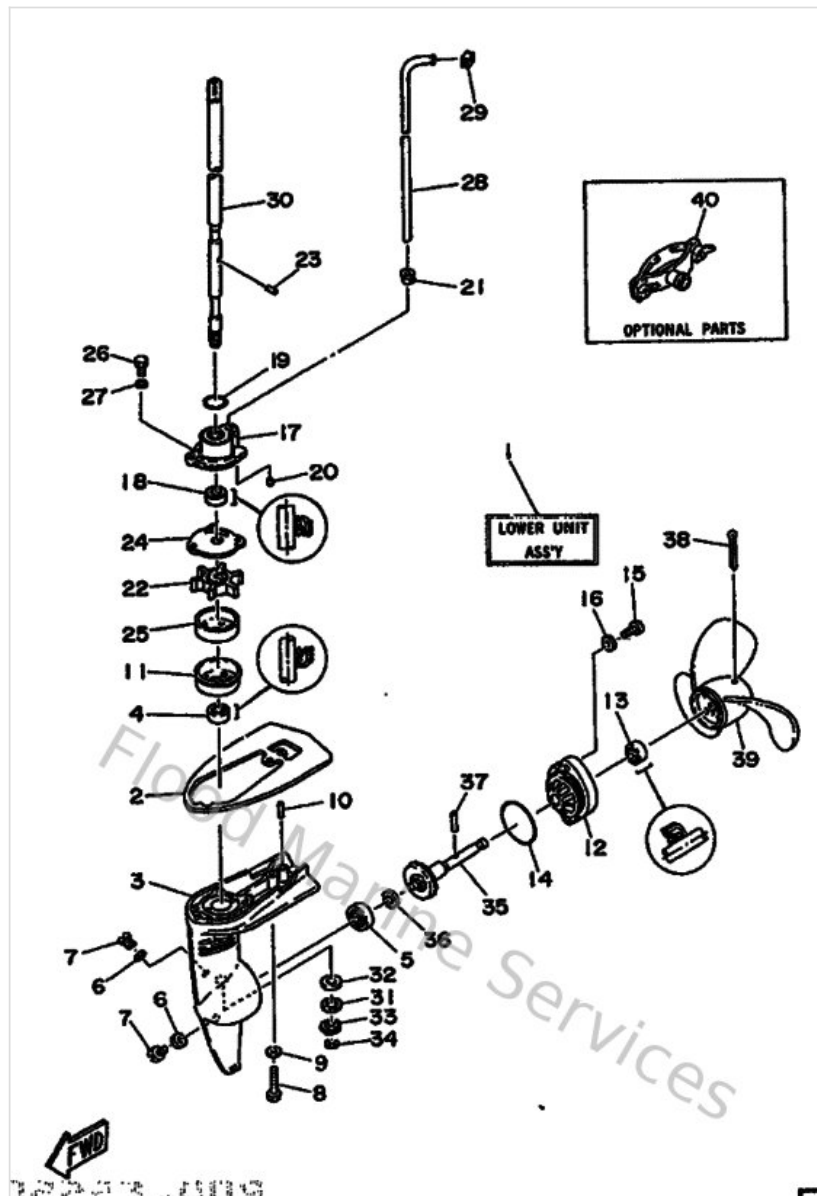
Ref	Part	
38	<a href="#">914903004500</a> Pin, cotter (am5)	<a href="#">Buy now</a>
39	<a href="#">6464594200EL</a> Propeller (3x7-1/4 x5-1/2 -a)	<a href="#">Buy now</a>

## Lower Casing & Drive



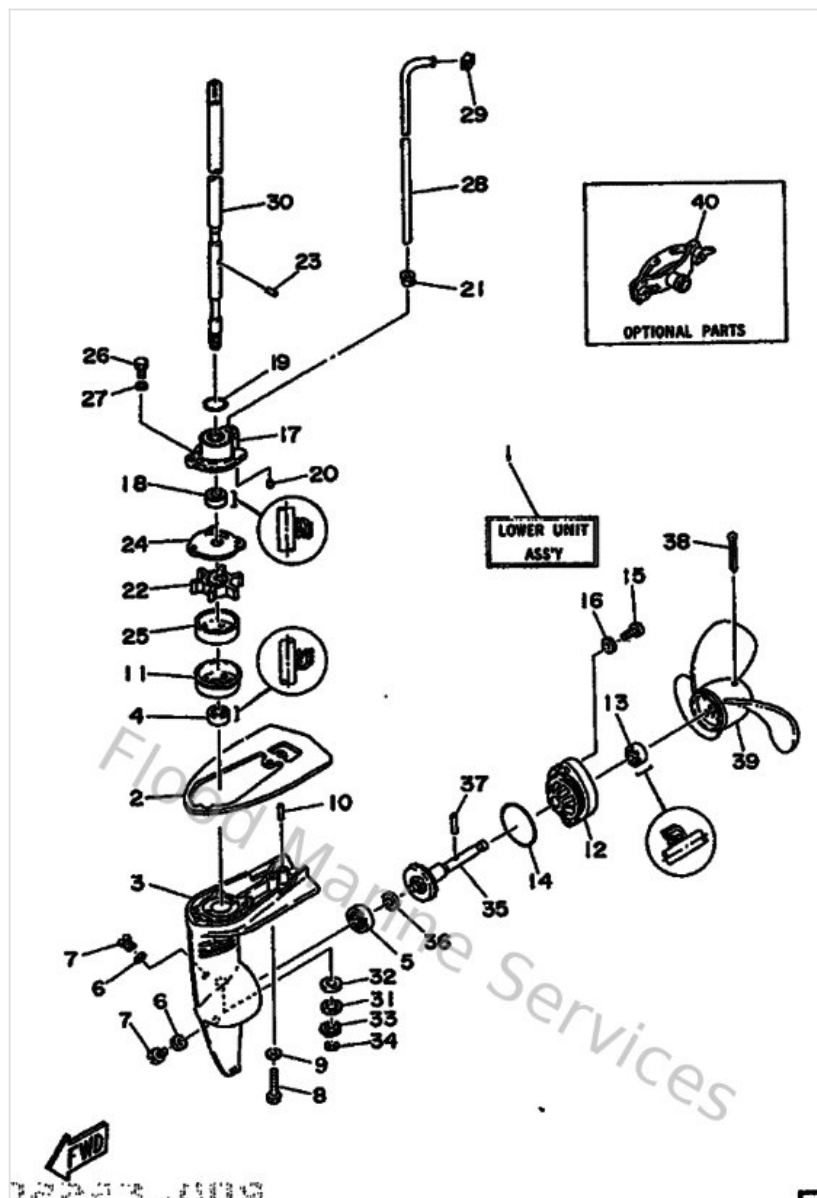
Ref	Part	
4	<a href="#">931031105100</a> Oil seal (11x21x8-646)	<a href="#">Buy now</a>
5	<a href="#">933060000100</a> Brg,r-b 6000 26mm 19g ky	<a href="#">Buy now</a>
6	<a href="#">904300802000</a> Gasket	<a href="#">Buy now</a>
7	<a href="#">903400801400</a> Plug, straight screw	<a href="#">Buy now</a>
8	<a href="#">970800603000</a> Bolt(jf7)	<a href="#">Buy now</a>
9	<a href="#">929900660000</a> Washer, plain (646)	<a href="#">Buy now</a>
10	<a href="#">936051506500</a> Pin, dowel	<a href="#">Buy now</a>
11	<a href="#">6A1443250000</a> Protector, oil seal	<a href="#">Buy now</a>
12	<a href="#">6A14536100EJ</a> Cap, lower casing	<a href="#">Buy now</a>
13	<a href="#">931031005200</a> Oil seal (10x21x10-646)	<a href="#">Buy now</a>
14	<a href="#">932104210100</a> O-ring (183)	<a href="#">Buy now</a>
15	<a href="#">973900601400</a> Bolt(gj3)	<a href="#">Buy now</a>
17	<a href="#">6A1443120094</a> Cover, water pump housing	<a href="#">Buy now</a>
19	<a href="#">932101912300</a> O-ring (646)	<a href="#">Buy now</a>
20	<a href="#">936040906800</a> Pin,dowel (646)	<a href="#">Buy now</a>

## Lower Casing & Drive



Ref	Part	
21	<a href="#">646443660100</a> Damper, water seal 2	<a href="#">Buy now</a>
22	<a href="#">646443520100</a> Impeller	<a href="#">Buy now</a>
23	<a href="#">936040906600</a> Pin, dowel	<a href="#">Buy now</a>
24	<a href="#">646443230000</a> Outer plate, cartridge	<a href="#">Buy now</a>
25	<a href="#">6GDG43220000</a> Insert, cartridge	<a href="#">Buy now</a>
26	<a href="#">973900501600</a> Bolt, with washer	<a href="#">Buy now</a>
27	<a href="#">929900560000</a> Washer, plain (646)	<a href="#">Buy now</a>
28	<a href="#">6A1443610000</a> Tube, water	<a href="#">Buy now</a>
30	<a href="#">6A1455100000</a> Drive shaft assembly	<a href="#">Buy now</a>
31	<a href="#">9020111M4900</a> Washer, plate (6e0)	<a href="#">Buy now</a>
33	<a href="#">646455510000</a> Pinion	<a href="#">Buy now</a>
34	<a href="#">990010560000</a> Circlip(22k)	<a href="#">Buy now</a>
35	<a href="#">646455600000</a> Gear	<a href="#">Buy now</a>
36	<a href="#">646455672000</a> Shim (t:0.50mm)	<a href="#">Buy now</a>
37	<a href="#">902500300200</a> Pin, straight(6a1)	<a href="#">Buy now</a>

## Lower Casing & Drive



Ref	Part	
38	<a href="#">914903004500</a> Pin, cotter (am5)	<a href="#">Buy now</a>
39	<a href="#">6A1459430000</a> Propeller assembly (3x7-1/4"x4"-a)	<a href="#">Buy now</a>

# Repair Kit

Fig. 9 REPAIR KIT

Ref.No.	Parts No.	Description	Q'ty	Ref.No.	Parts No.	Description	Q'ty
1	6A1-W0093-01	CARBURETOR REPAIR SET	1	20	646-14623-01	. GASKET, exhaust 2	1
2	646-14384-00	. GASKET, float chamber	1	21	6A1-14613-01	. GASKET, exhaust 1	1
3	6A1-14388-00	. GASKET	1	22	646-14384-00	. GASKET, float chamber	1
4	646-14385-00	. FLOAT	1	23	6A1-W0001-21	LOWER UNIT GASKET KIT	1
5	646-14386-00	. PIN, float	1	24	90430-08020	. GASKET	2
6	98503-04010	. SCREW, panhead	2	25	93103-11051	. OIL SEAL	2
7	6A1-14390-00	. VALVE SEAT ASS'Y	1	26	646-45363-00	. GASKET, lower casing cap	1
8	6A1-14390-10	. GASKET	1	27	93210-19123	. O-RING	2
9	646-14211-02	. SCREW, pilot adjusting	1	28	6A1-W0070-01	WATER PUMP REPAIR KIT	1
10	6A1-14116-00	. NEEDLE	1	29	93604-09060	. PIN, dowel B	2
11	646-14137-00	. CLIP	1	30	93210-19123	. O-RING	1
12	646-14168-00	. CAP	1	31	93103-11051	. OIL SEAL	1
13	646-14229-01	. O-RING	1	32	646-44323-00	. OUTER PLATE, cartridge	1
14	6A1-W0001-00	POWER HEAD GASKET KIT	1	33	646-44322-01	. IMPELLER	1
15	93210-09H29	. O-RING	1	34	646-44322-00	. INSERT, cartridge	1
16	646-11181-01	. GASKET, cylinder head	1	35	6A1-44325-00	. OIL SEAL, protector	1
17	6A1-13621-00	. PACKING, valve seat	1	36	93790-05016	. BOLT	2
18	93103-20070	. OIL SEAL	1	37	646-44366-01	. RUBBER, water seal 2	1
19	93102-11085	. OIL SEAL	1				

Ref	Part	
1	<a href="#">6A1W00930100</a> Carburetor Repair Kit	<a href="#">Buy now</a>
2	<a href="#">646143840000</a> Gasket, float chamber	<a href="#">Buy now</a>
3	<a href="#">6A1143980000</a> Gasket	<a href="#">Buy now</a>
5	<a href="#">646143860000</a> Pin, float	<a href="#">Buy now</a>
6	<a href="#">985800401000</a> Screw, pan head (e56)	<a href="#">Buy now</a>
7	<a href="#">6A1143900000</a> Needle Valve Assembly	<a href="#">Buy now</a>
9	<a href="#">646142110200</a> Screw, pilot adjusting	<a href="#">Buy now</a>
10	<a href="#">6A1141160000</a> Needle	<a href="#">Buy now</a>
11	<a href="#">646141370000</a> Clip	<a href="#">Buy now</a>
13	<a href="#">646142290100</a> O-ring	<a href="#">Buy now</a>
14	<a href="#">6A1W0001A000</a> Gasket kit, power unit	<a href="#">Buy now</a>
15	<a href="#">9321008M2900</a> O-ring (6a1)	<a href="#">Buy now</a>
16	<a href="#">646111810100</a> Gasket, cylinder head 1	<a href="#">Buy now</a>
17	<a href="#">6GDE36210000</a> Gasket, valve seat	<a href="#">Buy now</a>
18	<a href="#">931022007000</a> Oil seal	<a href="#">Buy now</a>

# Repair Kit

Fig. 9 REPAIR KIT

Ref.No.	Parts No.	Description	Q'ty	Ref.No.	Parts No.	Description	Q'ty
1	6A1-W0093-01	CARBURETOR REPAIR SET	1	20	646-14623-01	. GASKET, exhaust 2	1
2	646-14384-00	. GASKET, float chamber	1	21	6A1-14613-01	. GASKET, exhaust 1	1
3	6A1-14388-00	. GASKET	1	22	646-14384-00	. GASKET, float chamber	1
4	646-14385-00	. FLOAT	1	23	6A1-W0001-21	LOWER UNIT GASKET KIT	1
5	646-14386-00	. PIN, float	1	24	90430-08020	. GASKET	2
6	90503-04010	. SCREW, panhead	2	25	93103-11051	. OIL SEAL	2
7	6A1-14390-00	. VALVE SEAT ASS'Y	1	26	646-65363-00	. GASKET, lower casing cap	1
8	6A1-14390-10	. GASKET	1	27	93210-19123	. O-RING	2
9	646-14211-02	. SCREW, pilot adjusting	1	28	6A1-W0070-01	WATER PUMP REPAIR KIT	1
10	6A1-14116-00	. NEEDLE	1	29	93604-09060	. PIN, dowel B	2
11	646-14137-00	. CLIP	1	30	93210-19123	. O-RING	1
12	646-14168-00	. CAP	1	31	93103-11051	. OIL SEAL	1
13	646-14229-01	. O-RING	1	32	646-64323-00	. OUTER PLATE, cartridge	1
14	6A1-W0001-00	POWER HEAD GASKET KIT	1	33	646-64322-01	. IMPELLER	1
15	93210-09M29	. O-RING	1	34	646-64322-00	. INSERT, cartridge	1
16	646-11181-01	. GASKET, cylinder head	1	35	6A1-64325-00	. OIL SEAL, protector	1
17	6A1-13621-00	. PACKING, valve seat	1	36	93790-05016	. BOLT	2
18	93103-20070	. OIL SEAL	1	37	646-64366-01	. RUBBER, water seal 2	1
19	93102-11085	. OIL SEAL	1				

Ref	Part	
19	<a href="#">931021508500</a> Oil seal(6a1)	<a href="#">Buy now</a>
20	<a href="#">64614623A100</a> Gasket, exhaust	<a href="#">Buy now</a>
21	<a href="#">6A1146130100</a> Gasket,exhaust 1	<a href="#">Buy now</a>
23	<a href="#">6A1W0001C100</a> Gasket Kit, Lower Unit	<a href="#">Buy now</a>
24	<a href="#">904300802000</a> Gasket	<a href="#">Buy now</a>
25	<a href="#">931031105100</a> Oil seal (11x21x8-646)	<a href="#">Buy now</a>
26	<a href="#">646453630000</a> Gasket, lower casing cap	<a href="#">Buy now</a>
27	<a href="#">932101912300</a> O-ring (646)	<a href="#">Buy now</a>
28	<a href="#">6A1W00780100</a> Water pump repair kit	<a href="#">Buy now</a>
29	<a href="#">936040906800</a> Pin,dowel (646)	<a href="#">Buy now</a>
32	<a href="#">646443230000</a> Outer plate,cartridge	<a href="#">Buy now</a>
33	<a href="#">646443520100</a> Impeller	<a href="#">Buy now</a>
34	<a href="#">6GDG43220000</a> Insert, cartridge	<a href="#">Buy now</a>
35	<a href="#">6A1443250000</a> Protector, oil seal	<a href="#">Buy now</a>
36	<a href="#">973900501600</a> Bolt, with washer	<a href="#">Buy now</a>

# Repair Kit

Fig. 9 REPAIR KIT

Ref.No.	Parts No.	Description	Q'ty	Ref.No.	Parts No.	Description	Q'ty
1	6A1-W0093-01	CARBURETOR REPAIR SET	1	20	646-14623-01	. GASKET, exhaust 2	1
2	646-14384-00	. GASKET, float chamber	1	21	6A1-14613-01	. GASKET, exhaust 1	1
3	6A1-14385-00	. GASKET	1	22	646-14384-00	. GASKET, float chamber	1
4	646-14385-00	. FLOAT	1	23	6A1-W0001-21	LOWER UNIT GASKET KIT	1
5	646-14386-00	. PIR, float	1	24	90430-08020	. GASKET	2
6	90503-04010	. SCREW, panhead	2	25	93103-11051	. OIL SEAL	2
7	6A1-14390-00	. VALVE SEAT ASS'Y	1	26	646-45363-00	. GASKET, lower casing cap	1
8	6A1-14390-10	. GASKET	1	27	93210-19123	. O-RING	2
9	646-14211-02	. SCREW, pilot adjusting	1	28	6A1-W0070-01	WATER PUMP REPAIR KIT	1
10	6A1-14116-00	. NEEDLE	1	29	93604-09060	. PIR, dowel B	2
11	646-14137-00	. CLIP	1	30	93210-19123	. O-RING	1
12	646-14168-00	. CAP	1	31	93103-11051	. OIL SEAL	1
13	646-14229-01	. O-RING	1	32	646-44323-00	. OUTER PLATE, cartridge	1
14	6A1-W0001-00	POWER HEAD GASKET KIT	1	33	646-44322-01	. IMPELLER	1
15	93210-09M29	. O-RING	1	34	646-44322-00	. INSERT, cartridge	1
16	646-11181-01	. GASKET, cylinder head	1	35	6A1-44325-00	. OIL SEAL, protector	1
17	6A1-13621-00	. PACKING, valve seat	1	36	93790-05016	. BOLT	2
18	93105-20070	. OIL SEAL	1	37	646-44366-01	. RUBBER, water seal 2	1
19	93102-11085	. OIL SEAL	1				

Ref	Part	
37	<a href="#">646443660100</a> Damper, water seal 2	<a href="#">Buy now</a>



# Starter

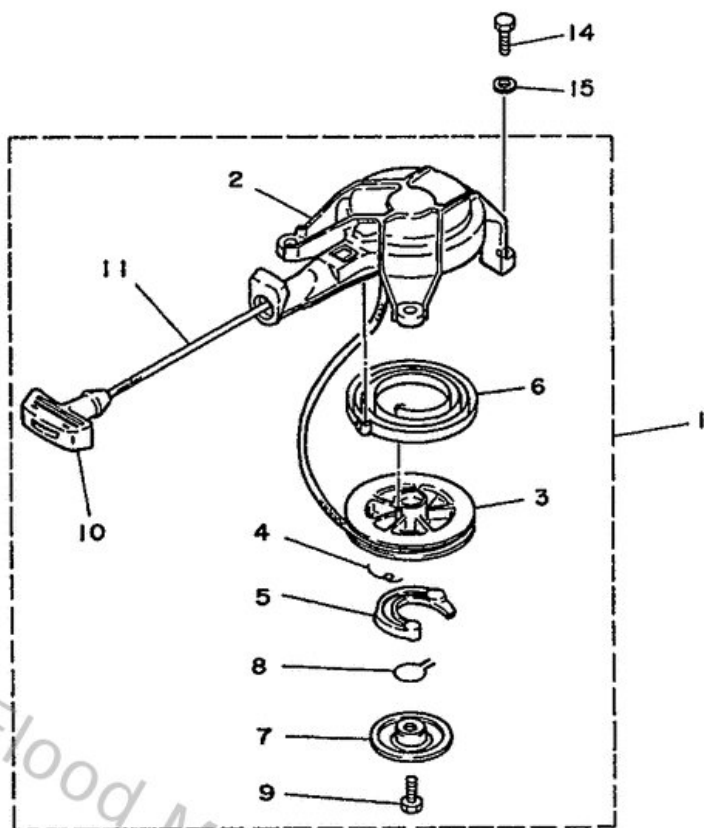
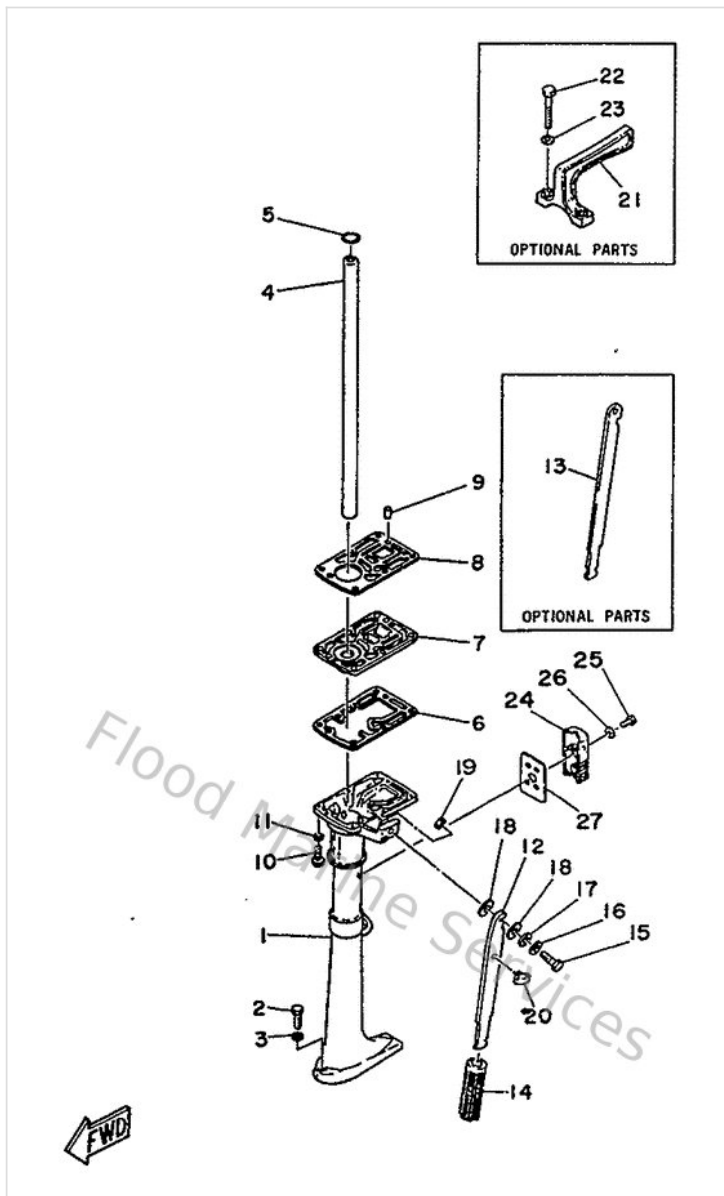


Fig.8, Ref.No.19



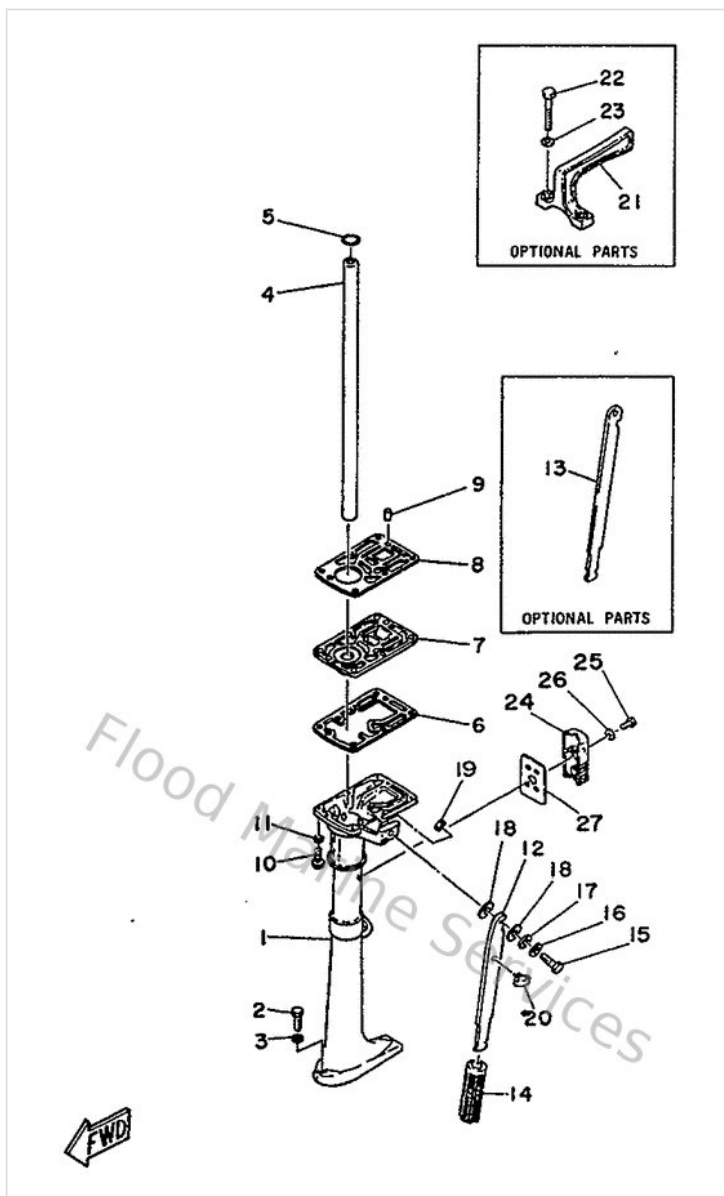
Ref	Part	
1	<a href="#">6A1157100000</a> Starter ass'y	<a href="#">Buy now</a>
2	<a href="#">6A1157110000</a> Case, starter	<a href="#">Buy now</a>
3	<a href="#">6A1157140000</a> Drum, sheave	<a href="#">Buy now</a>
4	<a href="#">6A1157670000</a> Spring, return	<a href="#">Buy now</a>
5	<a href="#">6A1157410000</a> Pawl, drive	<a href="#">Buy now</a>
6	<a href="#">6A1157130000</a> Spring, starter	<a href="#">Buy now</a>
7	<a href="#">6A1157170000</a> Plate, drive	<a href="#">Buy now</a>
8	<a href="#">6A1157050000</a> Spring, drive pawl	<a href="#">Buy now</a>
9	<a href="#">970130601200</a> Bolt(gh1)	<a href="#">Buy now</a>
10	<a href="#">6A1157550100</a> Handle, Starter	<a href="#">Buy now</a>
12	<a href="#">6A1157230094</a> Pulley, starter	<a href="#">Buy now</a>
13	<a href="#">927030601200</a> Screw flat head	<a href="#">Buy now</a>
14	<a href="#">973130601600</a> Bolt, hexagon deep recess	<a href="#">Buy now</a>
15	<a href="#">929030660000</a> Washer, plain (646)	<a href="#">Buy now</a>

# Upper Casing



Ref	Part	
2	<a href="#">973950603000</a> Bolt(jf7)	<a href="#">Buy now</a>
3	<a href="#">929900660000</a> Washer, plain (646)	<a href="#">Buy now</a>
5	<a href="#">932101912300</a> O-ring (646)	<a href="#">Buy now</a>
6	<a href="#">646146230100</a> Gasket, exhaust	<a href="#">Buy now</a>
7	<a href="#">6A141137009M</a> Guide,exhaust	<a href="#">Buy now</a>
8	<a href="#">6A114613A000</a> Gasket,exhaust 1	<a href="#">Buy now</a>
9	<a href="#">936051506500</a> Pin, dowel	<a href="#">Buy now</a>
10	<a href="#">973950602500</a> Bolt	<a href="#">Buy now</a>
13	<a href="#">6464211200EJ</a> Handle, steering	<a href="#">Buy now</a>
14	<a href="#">646421190200</a> Grip, steering handle	<a href="#">Buy now</a>
16	<a href="#">929900810000</a> Ybs67-8 washer, spring	<a href="#">Buy now</a>
17	<a href="#">929900820000</a> Ybs66-8 washer, plain	<a href="#">Buy now</a>
18	<a href="#">902010911700</a> Washer 1 6154367300	<a href="#">Buy now</a>
19	<a href="#">953800860000</a> Nut (661)	<a href="#">Buy now</a>
20	<a href="#">646425910000</a> Holder, shear pin	<a href="#">Buy now</a>

## Upper Casing



Ref	Part	
22	<a href="#">975950655500</a> Bolt, hexagon w/w deep recess	<a href="#">Buy now</a>
23	<a href="#">929900610000</a> Washer(6a1)	<a href="#">Buy now</a>
24	<a href="#">6A1451510000</a> Cover, upper casing	<a href="#">Buy now</a>
25	<a href="#">978900601600</a> Screw pan head	<a href="#">Buy now</a>
27	<a href="#">6A1451150000</a> Gasket, upper casing	<a href="#">Buy now</a>

# Disclaimer

This document is provided for convenience only. It is **not** an official Yamaha publication and is **not supplied, endorsed, or approved** by Yamaha Motor Co., Ltd.

Reasonable efforts are made to keep information accurate; however diagrams, part references, supersessions, descriptions, and applicability may contain errors or omissions. Specifications and part availability may change without notice.

You are responsible for confirming the correct parts for your engine (including model code, year, serial range, and any superseded part numbers) before ordering or fitting.