



# Yamaha 2CMH 2010

## Parts Manual

[www.floodmarine.co.uk](http://www.floodmarine.co.uk)

+44 2882 246 539

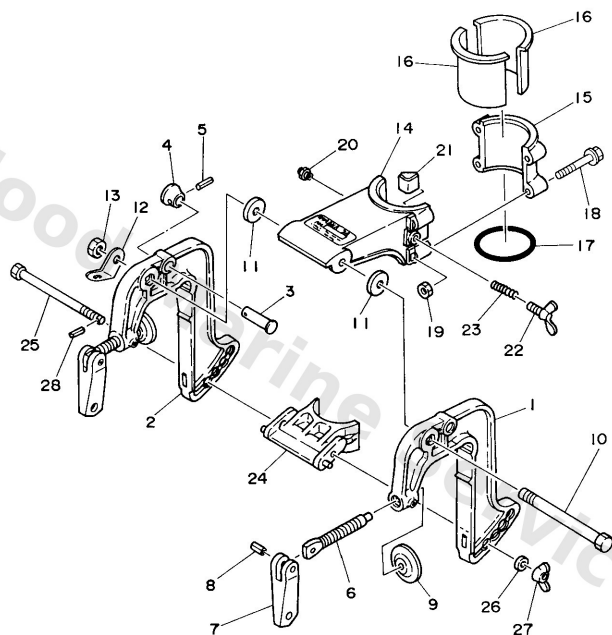
Authorised Yamaha Dealers



# Contents

<b>BRACKET .....</b>	<b>3</b>
<b>CARBURETOR .....</b>	<b>5</b>
<b>COWLING &amp; FUEL .....</b>	<b>8</b>
<b>CYLINDER &amp; CRANKCASE .....</b>	<b>12</b>
<b>GENERATOR .....</b>	<b>16</b>
<b>LOWER CASING &amp; DRIVE .....</b>	<b>18</b>
<b>REPAIR KIT .....</b>	<b>22</b>
<b>STARTER .....</b>	<b>25</b>
<b>UPPER CASING .....</b>	<b>26</b>

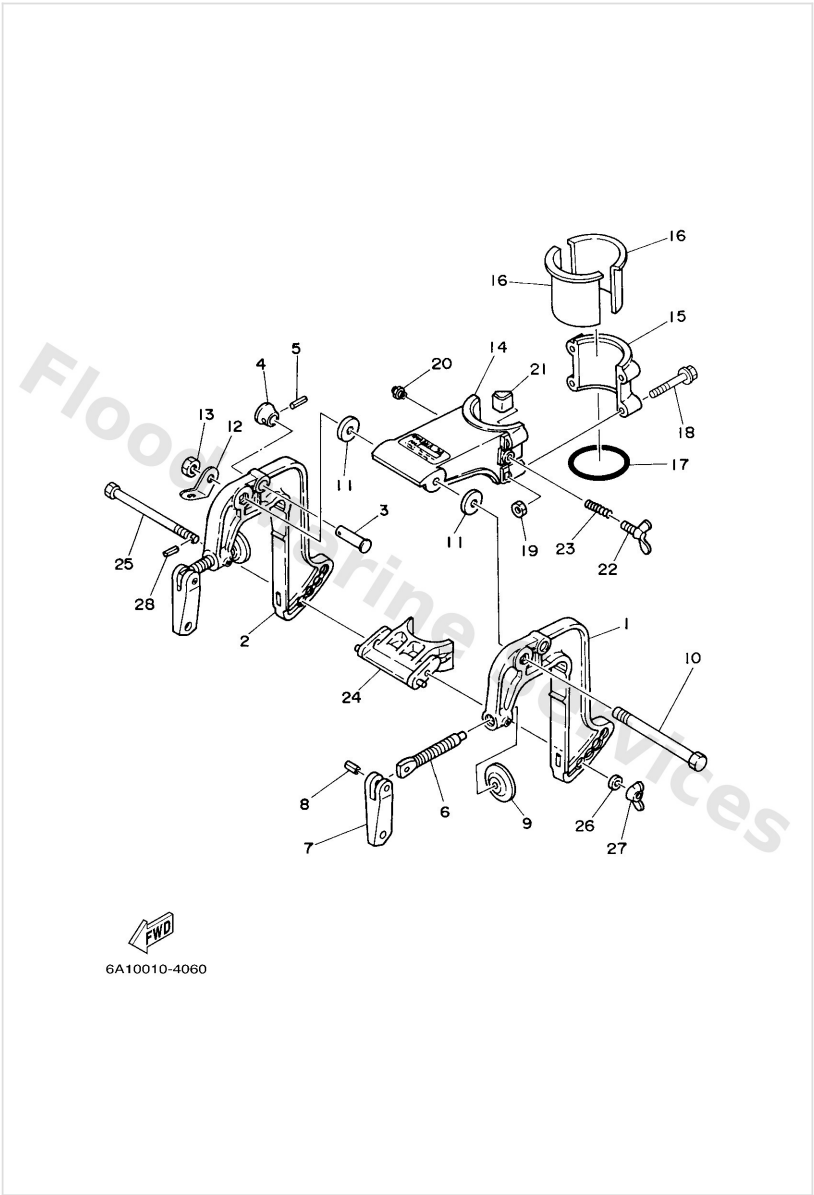
# Bracket



FWD  
6A10010-4060

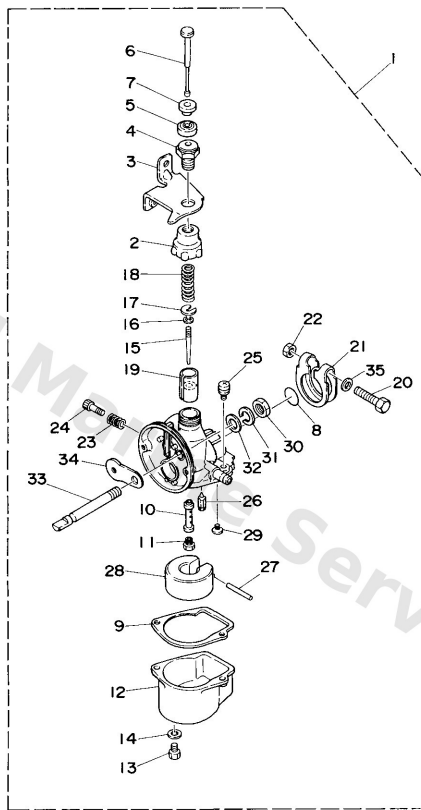
Ref	Part	
1	<a href="#">6A143111034D</a> Bracket, clamp	<a href="#">Buy now</a>
2	<a href="#">6A143112004D</a> Bracket, clamp	<a href="#">Buy now</a>
3	<a href="#">6A14319100</a> Shaft, stopper	<a href="#">Buy now</a>
4	<a href="#">6A14319200</a> Knob, stopper	<a href="#">Buy now</a>
5	<a href="#">9169030014</a> Pin, spring (647)	<a href="#">Buy now</a>
6	<a href="#">6E04311601</a> Screw, transom clamp	<a href="#">Buy now</a>
7	<a href="#">6E04311801</a> Handle, transom clamp	<a href="#">Buy now</a>
8	<a href="#">9024304M01</a> Pin(6a1)	<a href="#">Buy now</a>
9	<a href="#">6204311400</a> Pad, transom clamp	<a href="#">Buy now</a>
10	<a href="#">9010108217</a> Bolt 6464313100	<a href="#">Buy now</a>
11	<a href="#">9020208022</a> Washer 6464313202	<a href="#">Buy now</a>
12	<a href="#">6A14311301</a> Plate, clamp bracket	<a href="#">Buy now</a>
13	<a href="#">9538008600</a> Nut (661)	<a href="#">Buy now</a>
14	<a href="#">6A143311024D</a> Bracket, swivel 1	<a href="#">Buy now</a>
15	<a href="#">6A143312004D</a> Bracket, swivel 2	<a href="#">Buy now</a>

Bracket



Ref	Part	
16	<a href="#">6464253701</a> Bushing, pivot shaft	<a href="#">Buy now</a>
17	<a href="#">9321046044</a> O-ring	<a href="#">Buy now</a>
18	<a href="#">9011906M98</a> Bolt, with washer	<a href="#">Buy now</a>
19	<a href="#">9538006600</a> Nut(661)	<a href="#">Buy now</a>
20	<a href="#">9370006M03</a> Nipple, grease(6a1)	<a href="#">Buy now</a>
21	<a href="#">6464252800</a> Piece, friction	<a href="#">Buy now</a>
22	<a href="#">9012206004</a> Bolt, wing (646)	<a href="#">Buy now</a>
23	<a href="#">9050112272</a> Spring 6464252401	<a href="#">Buy now</a>
24	<a href="#">6A14335100</a> Receiver, thrust	<a href="#">Buy now</a>
25	<a href="#">6A14337100</a> Bolt, receiver	<a href="#">Buy now</a>
26	<a href="#">9020106040</a> Washer 6464337400	<a href="#">Buy now</a>
27	<a href="#">9017506008</a> Nut, Wing	<a href="#">Buy now</a>
28	<a href="#">9169020006</a> Pin, spring (647)	<a href="#">Buy now</a>

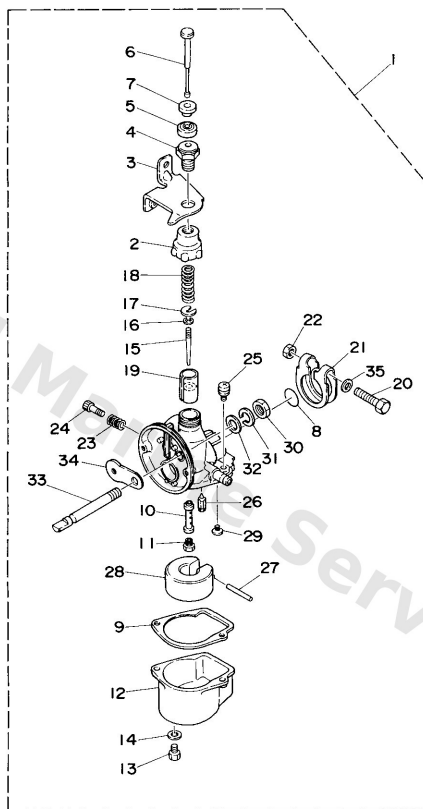
# Carburetor



6A10010-4030

Ref	Part	
1	<a href="#">6F81430103</a> Carburetor assembly 1	<a href="#">Buy now</a>
2	<a href="#">6461415800</a> Top, mixing chamber	<a href="#">Buy now</a>
3	<a href="#">6A11449700</a> Stay, throttle wire	<a href="#">Buy now</a>
4	<a href="#">6461432100</a> Screw, throttle	<a href="#">Buy now</a>
5	<a href="#">6461416900</a> -	<a href="#">Buy now</a>
6	<a href="#">6A11431400</a> Bar, throttle	<a href="#">Buy now</a>
7	<a href="#">6A11416300</a> Spacer	<a href="#">Buy now</a>
8	<a href="#">6461422901</a> O-ring	<a href="#">Buy now</a>
9	<a href="#">6A11438400</a> Gasket, float chamber	<a href="#">Buy now</a>
10	<a href="#">6A11434101</a> Nozzle, main	<a href="#">Buy now</a>
11	<a href="#">6A11434352</a> Jet, main (#104)	<a href="#">Buy now</a>
12	<a href="#">6A11438102</a> Body, float chamber	<a href="#">Buy now</a>
13	<a href="#">9789005006</a> Screw,panhead (eg9)	<a href="#">Buy now</a>
14	<a href="#">6461419801</a> Gasket	<a href="#">Buy now</a>
15	<a href="#">6F81411600</a> Needle	<a href="#">Buy now</a>

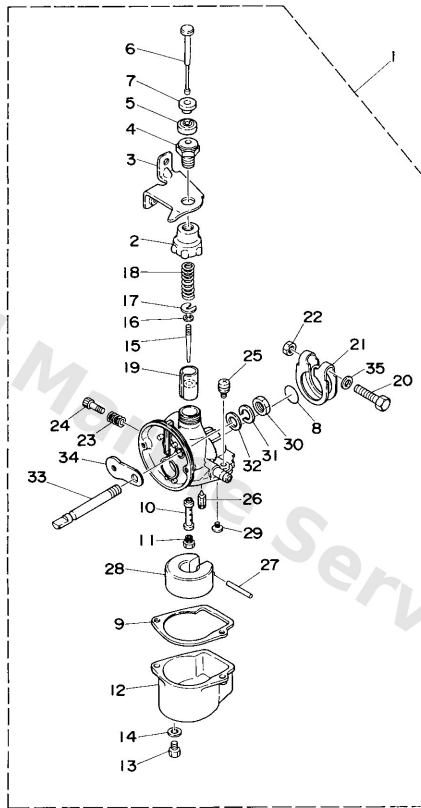
# Carburetor



6A10010-4030

Ref	Part	
16	<a href="#">6461413700</a> Clip	<a href="#">Buy now</a>
17	<a href="#">6461413600</a> Seat, spring	<a href="#">Buy now</a>
18	<a href="#">6461433101</a> Spring,throttle valve	<a href="#">Buy now</a>
19	<a href="#">6461431208</a> Valve, throttle	<a href="#">Buy now</a>
20	<a href="#">6A11412501</a> -	<a href="#">Buy now</a>
21	<a href="#">6A11412701</a> Clip	<a href="#">Buy now</a>
22	<a href="#">6A11435801</a> Nut	<a href="#">Buy now</a>
23	<a href="#">6A11421200</a> Spring, Pilot Adjusting	<a href="#">Buy now</a>
24	<a href="#">6461421102</a> Screw, pilot adjusting	<a href="#">Buy now</a>
25	<a href="#">9798004110</a> Screw, pan head (e56)	<a href="#">Buy now</a>
26	<a href="#">6A11439200</a> Valve, needle	<a href="#">Buy now</a>
27	<a href="#">6A11438600</a> Pin, float	<a href="#">Buy now</a>
28	<a href="#">6A11438500</a> Float	<a href="#">Buy now</a>
29	<a href="#">9858003005</a> Screw, pan head(78g)	<a href="#">Buy now</a>
30	<a href="#">6461435800</a> Nut	<a href="#">Buy now</a>

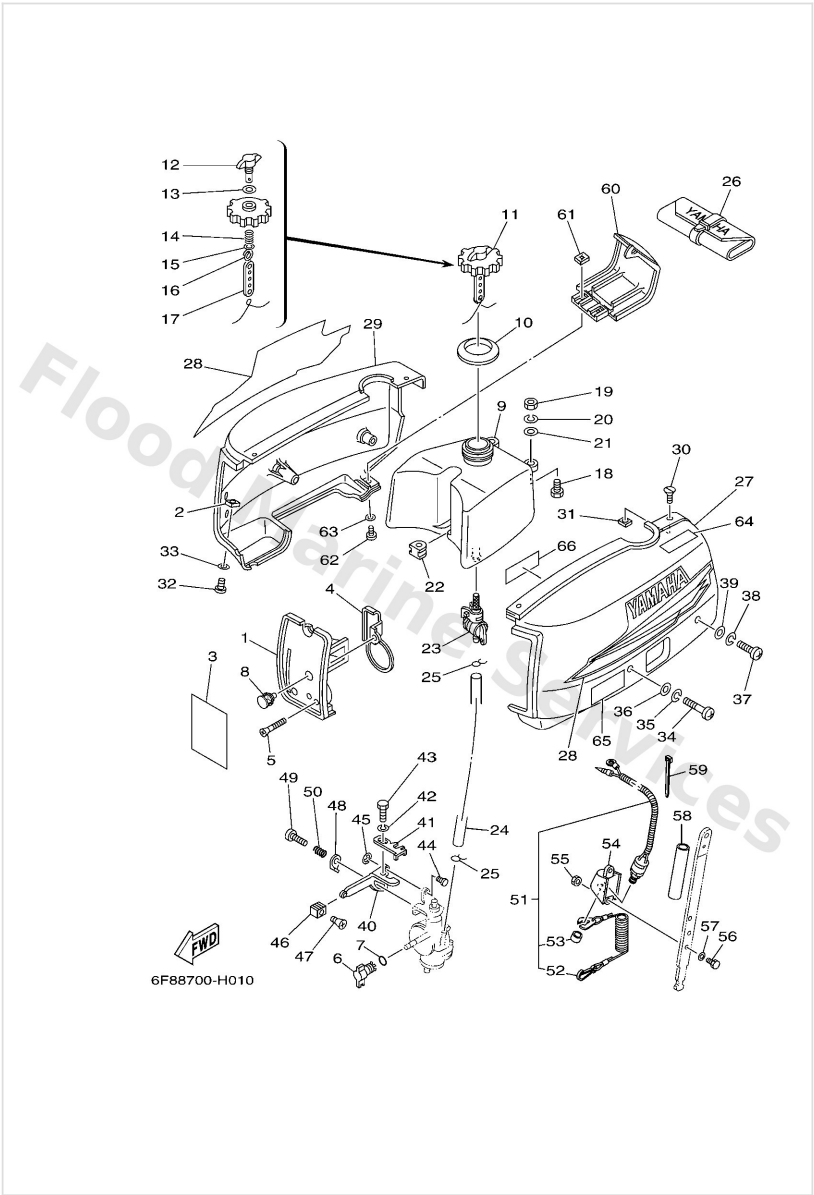
# Carburetor



FWD  
6A10010-4030

Ref	Part	
31	<a href="#">6A11435600</a> Washer	<a href="#">Buy now</a>
32	<a href="#">6461435700</a> Washer	<a href="#">Buy now</a>
33	<a href="#">6A11444800</a> Lever, choke valve	<a href="#">Buy now</a>
34	<a href="#">6F81421700</a> Valve, choke	<a href="#">Buy now</a>
35	<a href="#">9299005600</a> Washer, plain (646)	<a href="#">Buy now</a>

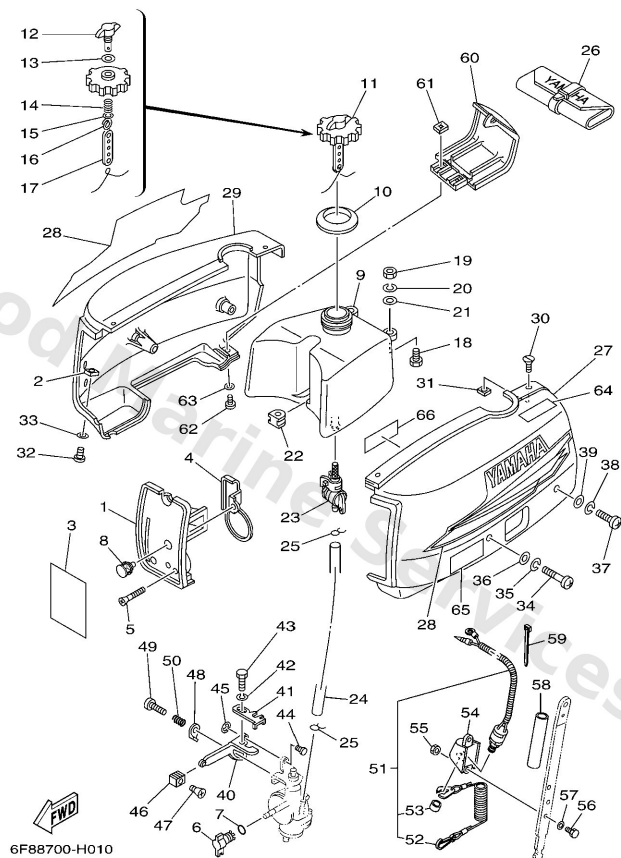
## Cowling &amp; Fuel



Ref	Part	
1	<a href="#">6A11444102</a> Silencer, intake 2	<a href="#">Buy now</a>
2	<a href="#">9017305M00</a> Nut, square (6a1)	<a href="#">Buy now</a>
3	<a href="#">6A14267720</a> Graphic, front	<a href="#">Buy now</a>
4	<a href="#">6A11444200</a> Spacer 1	<a href="#">Buy now</a>
5	<a href="#">9015104M04</a> Screw, countersunk	<a href="#">Buy now</a>
6	<a href="#">6A14127100</a> Knob, choke	<a href="#">Buy now</a>
7	<a href="#">9321008M29</a> O-ring (6a1)	<a href="#">Buy now</a>
8	<a href="#">9033808010</a> Plug	<a href="#">Buy now</a>
9	<a href="#">6A12411001</a> Fuel tank assembly	<a href="#">Buy now</a>
10	<a href="#">6A12419800</a> Seat, rubber	<a href="#">Buy now</a>
11	<a href="#">6A12461002</a> Cap assembly	<a href="#">Buy now</a>
12	<a href="#">6A12463100</a> Screw, air	<a href="#">Buy now</a>
13	<a href="#">9043004005</a> Gasket 6112463200	<a href="#">Buy now</a>
14	<a href="#">90501100A5</a> Spring, compression	<a href="#">Buy now</a>
15	<a href="#">9299004200</a> Ybs66-4 washer, plain	<a href="#">Buy now</a>

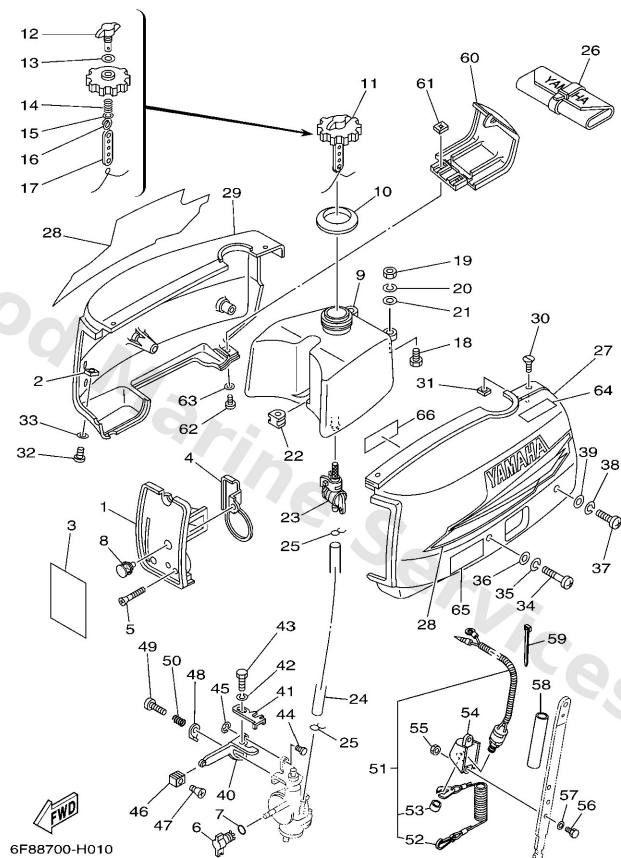


## Cowling & Fuel



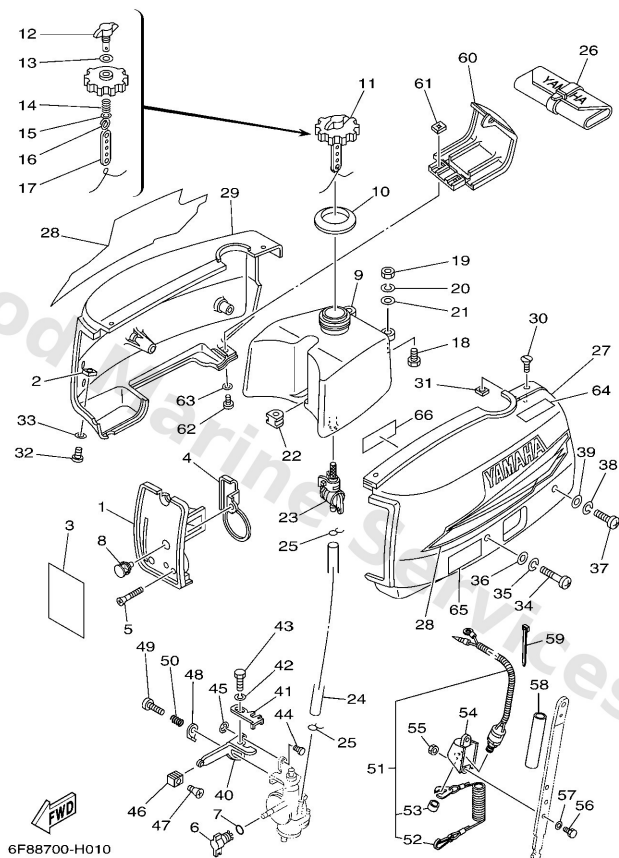
Ref	Part	
16	<a href="#">90468100A0</a> Clip	<a href="#">Buy now</a>
17	<a href="#">6462424100</a> Indicator	<a href="#">Buy now</a>
18	<a href="#">9709506018</a> Bolt (fj0)	<a href="#">Buy now</a>
19	<a href="#">9538006600</a> Nut(661)	<a href="#">Buy now</a>
20	<a href="#">9299506100</a> Washer(6a1)	<a href="#">Buy now</a>
21	<a href="#">9020106M30</a> Washer, plate (6a1)	<a href="#">Buy now</a>
22	<a href="#">6A12418100</a> Damper, locating	<a href="#">Buy now</a>
23	<a href="#">6A12450002</a> Fuel cock assembly 1	<a href="#">Buy now</a>
24	<a href="#">6A12431100</a> Pipe 1	<a href="#">Buy now</a>
25	<a href="#">9046708004</a> Clip, pipe 6162435600	<a href="#">Buy now</a>
26	<a href="#">656W281002</a> Tool kit	<a href="#">Buy now</a>
27	<a href="#">6F84274100</a> Apron	<a href="#">Buy now</a>
28	<a href="#">6A1W007014</a> Graphic set	<a href="#">Buy now</a>
29	<a href="#">6A14277112</a> Apron	<a href="#">Buy now</a>
30	<a href="#">9878005012</a> Screw(617)	<a href="#">Buy now</a>

## Cowling & Fuel



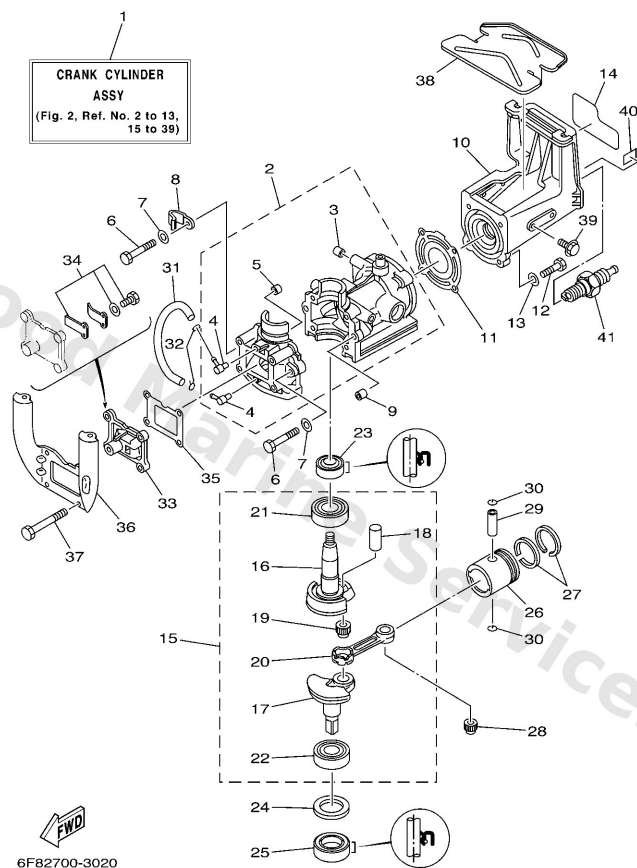
Ref	Part	
31	<a href="#">9018305M00</a> Nut, spring (6a1)	<a href="#">Buy now</a>
32	<a href="#">9788005012</a> Screw,pan head (646)	<a href="#">Buy now</a>
33	<a href="#">9299005600</a> Washer, plain (646)	<a href="#">Buy now</a>
34	<a href="#">9788006040</a> Screw pan head	<a href="#">Buy now</a>
35	<a href="#">9299006100</a> Washer(6a1)	<a href="#">Buy now</a>
36	<a href="#">9299006600</a> Washer, plain (646)	<a href="#">Buy now</a>
37	<a href="#">9788006025</a> Screw, pan head(6b0)	<a href="#">Buy now</a>
40	<a href="#">6A14121201</a> Arm, accel.	<a href="#">Buy now</a>
41	<a href="#">6A14121100</a> Link,accel	<a href="#">Buy now</a>
42	<a href="#">9299005100</a> Ybs67-5 washer, spring	<a href="#">Buy now</a>
43	<a href="#">9709505010</a> Bolt (682)	<a href="#">Buy now</a>
44	<a href="#">6A11436500</a> Pin, clevis	<a href="#">Buy now</a>
45	<a href="#">9900104600</a> Circlip (eu0)	<a href="#">Buy now</a>
46	<a href="#">6A14163700</a> Knob, magneto control	<a href="#">Buy now</a>
47	<a href="#">9878003010</a> Screw, flat head (e56)	<a href="#">Buy now</a>

## Cowling & Fuel



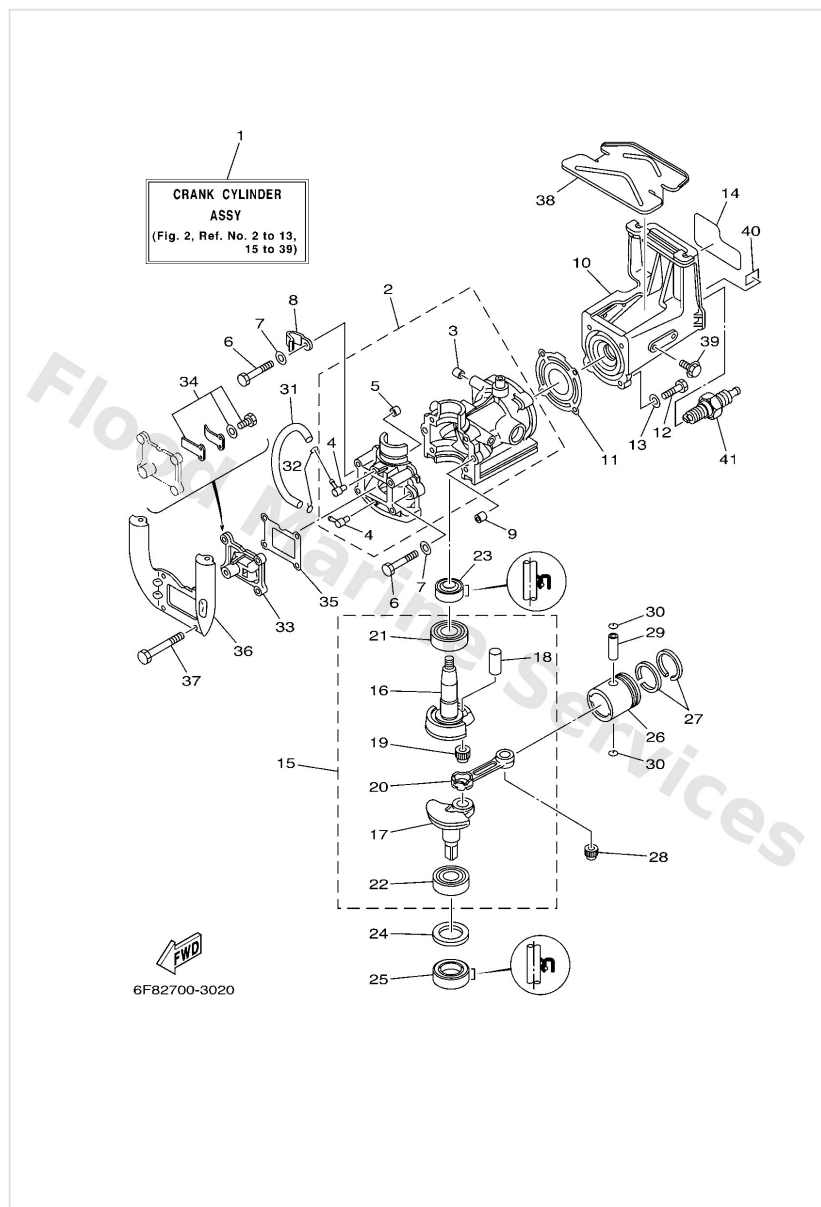
Ref	Part	
48	<a href="#">6A14122300</a> Washer, lock 1	<a href="#">Buy now</a>
49	<a href="#">9788505025</a> Screw, pan head(62j)	<a href="#">Buy now</a>
50	<a href="#">9050112M16</a> Spring (6a1)	<a href="#">Buy now</a>
51	<a href="#">6F88257500</a> Engine stop switch assembly	<a href="#">Buy now</a>
52	<a href="#">6828255600</a> Lanyard, stop switch	<a href="#">Buy now</a>
53	<a href="#">6898257Y00</a> Cap	<a href="#">Buy now</a>
54	<a href="#">6F84217600</a> Stay 2	<a href="#">Buy now</a>
56	<a href="#">9709506016</a> Bolt, hexagon deep recess	<a href="#">Buy now</a>
57	<a href="#">9299506600</a> Washer, plain (646)	<a href="#">Buy now</a>
58	<a href="#">6F88355700</a> Tube	<a href="#">Buy now</a>
59	<a href="#">9046513M11</a> Clamp (6e5)	<a href="#">Buy now</a>
60	<a href="#">6A18237512</a> Cover, plug cap	<a href="#">Buy now</a>
64	<a href="#">6S74269840</a> Label, warning (fu	<a href="#">Buy now</a>
65	<a href="#">6S74279440</a> Label, warning (ge	<a href="#">Buy now</a>
66	<a href="#">6AH8199440</a> Label, safety	<a href="#">Buy now</a>

# Cylinder & Crankcase



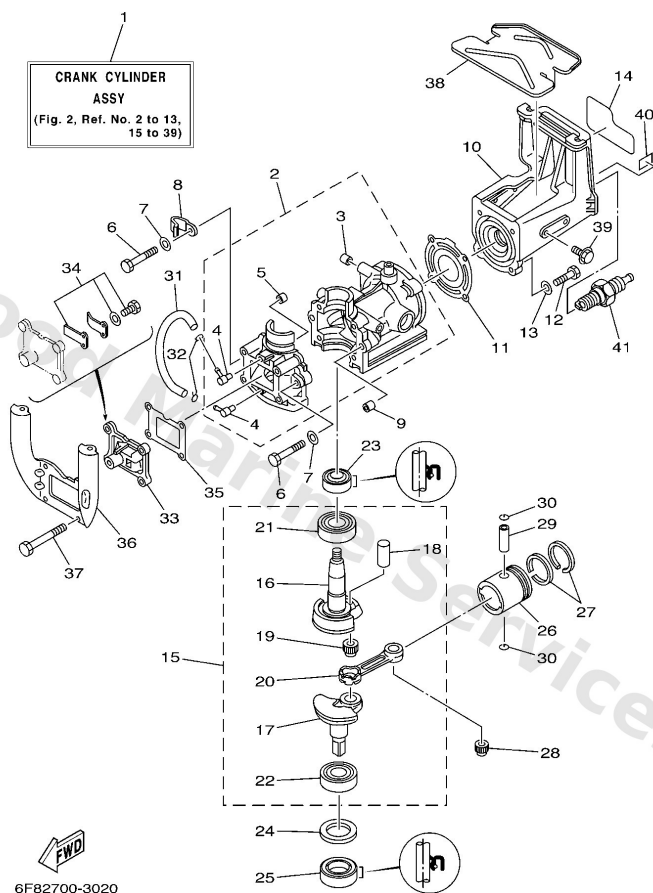
Ref	Part	
1	<a href="#">6F8W0090641S</a> Crank cylinder assembly	<a href="#">Buy now</a>
2	<a href="#">6F815100611S</a> Crankcase assembly	<a href="#">Buy now</a>
3	<a href="#">9033606001</a> Plug, blind 6551131300	<a href="#">Buy now</a>
4	<a href="#">6501448503</a> Pipe, joint	<a href="#">Buy now</a>
5	<a href="#">6241137900</a> Valve, check	<a href="#">Buy now</a>
6	<a href="#">9701306040</a> Bolt (682)	<a href="#">Buy now</a>
7	<a href="#">9290306600</a> Washer, plain (646)	<a href="#">Buy now</a>
8	<a href="#">9046506M86</a> Clamp	<a href="#">Buy now</a>
9	<a href="#">9953010014</a> Pin, dowel	<a href="#">Buy now</a>
10	<a href="#">6A111111021S</a> Head, cylinder 1	<a href="#">Buy now</a>
11	<a href="#">6F811181A1</a> Gasket, cylinder head 1	<a href="#">Buy now</a>
12	<a href="#">9709506025</a> Bolt	<a href="#">Buy now</a>
13	<a href="#">9299506600</a> Washer, plain (646)	<a href="#">Buy now</a>
14	<a href="#">6A14267812</a> Graphic, rear	<a href="#">Buy now</a>
15	<a href="#">6A11140000</a> Crankshaft assembly	<a href="#">Buy now</a>

# Cylinder & Crankcase



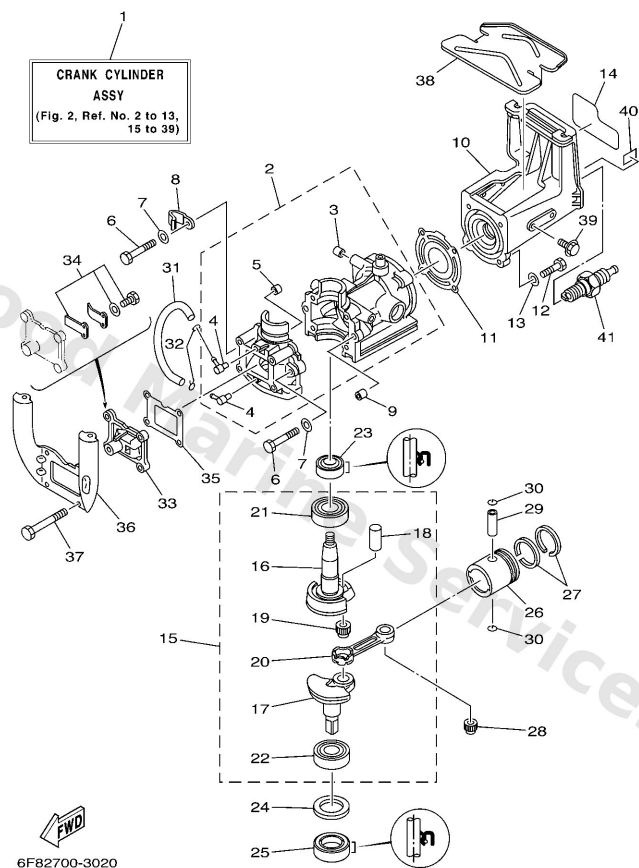
Ref	Part	
16	<a href="#">6461141201</a> Crank 1	<a href="#">Buy now</a>
17	<a href="#">6A11142200</a> Crank 2	<a href="#">Buy now</a>
18	<a href="#">6461168100</a> Pin, crank 1	<a href="#">Buy now</a>
19	<a href="#">9331031439</a> Brg,cyl-cal roller 5g tm	<a href="#">Buy now</a>
20	<a href="#">6461165102</a> Rod, connecting	<a href="#">Buy now</a>
21	<a href="#">9330600409</a> Brg,r-b 6004 42mm 69g nk	<a href="#">Buy now</a>
22	<a href="#">9330630204</a> Brg,r-b 6302 42mm 82g nk	<a href="#">Buy now</a>
23	<a href="#">9310220070</a> Oil seal	<a href="#">Buy now</a>
24	<a href="#">9020135300</a> Washer, Plate	<a href="#">Buy now</a>
25	<a href="#">9310215M32</a> Oil seal(6a1)	<a href="#">Buy now</a>
26	<a href="#">6F8116310098</a> Piston (std)	<a href="#">Buy now</a>
26	<a href="#">6F81163500</a> Piston (1st o.s) AP	<a href="#">Buy now</a>
26	<a href="#">6F81163600</a> Piston (2nd o.s) AP	<a href="#">Buy now</a>
27	<a href="#">6F81161000</a> Piston ring set (std)	<a href="#">Buy now</a>
27	<a href="#">6F81161010</a> Piston ring set (0.25mm o/s) AP	<a href="#">Buy now</a>

# Cylinder & Crankcase



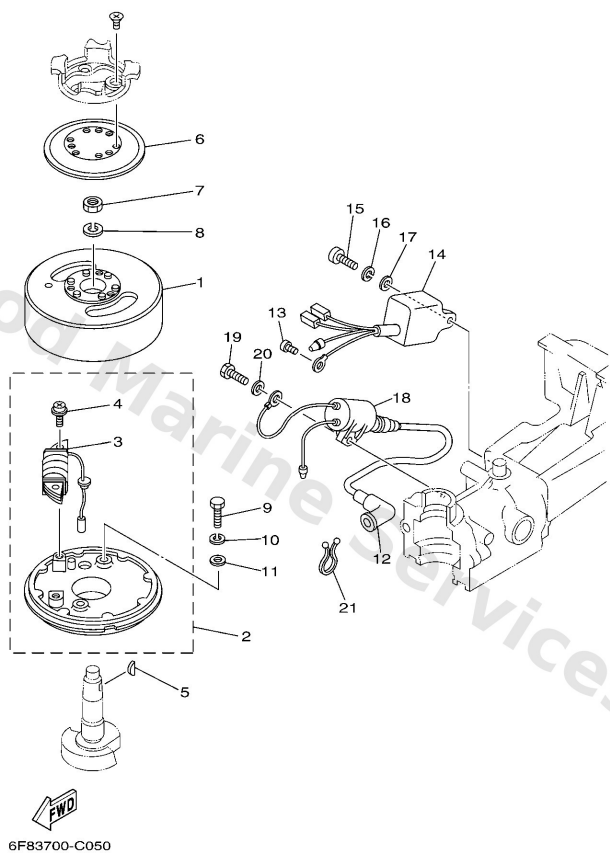
Ref	Part	
27	<a href="#">6F81161020</a> Piston ring set (0.50mm o/s) AP	<a href="#">Buy now</a>
28	<a href="#">93310210V1</a> Bearing (27v)	<a href="#">Buy now</a>
29	<a href="#">6461163300</a> Pin,piston	<a href="#">Buy now</a>
30	<a href="#">9345011021</a> Circlip 101116340000	<a href="#">Buy now</a>
31	<a href="#">9044507254</a> Hose (I200)	<a href="#">Buy now</a>
32	<a href="#">9046706016</a> Clip (655)	<a href="#">Buy now</a>
33	<a href="#">6A11361000</a> Reed valve assembly	<a href="#">Buy now</a>
34	<a href="#">6A1W000400</a> Reed set	<a href="#">Buy now</a>
35	<a href="#">6A113621A0</a> Gasket, valve seat	<a href="#">Buy now</a>
36	<a href="#">6A11577101</a> Stay 1	<a href="#">Buy now</a>
37	<a href="#">9701306060</a> Bolt, hexagon	<a href="#">Buy now</a>
38	<a href="#">6A12414100</a> Protector, fuel tank	<a href="#">Buy now</a>
39	<a href="#">9589506010</a> Bolt, flange(7ht)	<a href="#">Buy now</a>
40	<a href="#">6644279100</a> Mark 1	<a href="#">Buy now</a>
40	<a href="#">6644279110</a> Mark 1 FOR CHN,CAR	<a href="#">Buy now</a>

# Cylinder & Crankcase



Ref	Part	
41	<a href="#">9470200040</a> Plug, spark (b7hs)	<a href="#">Buy now</a>
41	<a href="#">9470200272</a> Plug, spark (br7hs) FOR CHN,CAR	<a href="#">Buy now</a>

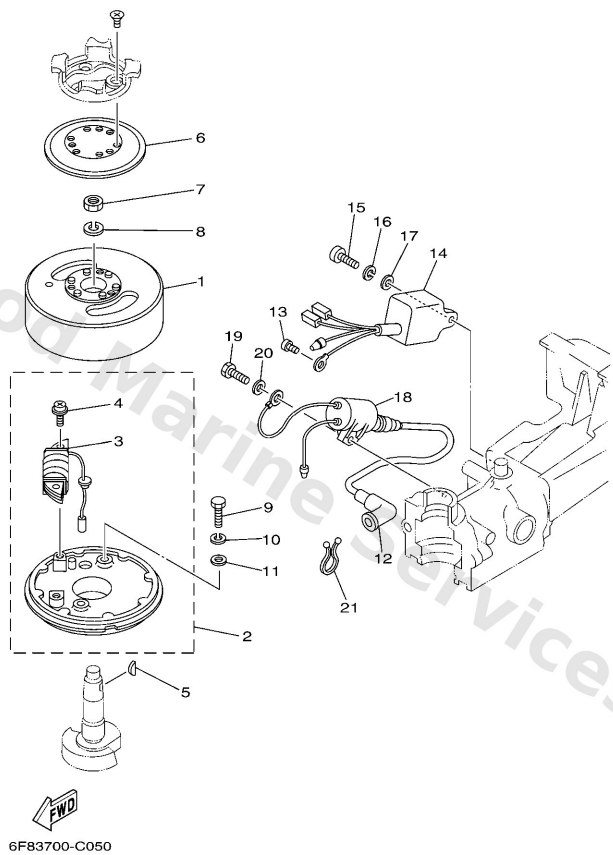
# Generator



Ref	Part	
1	<a href="#">6A18555000</a> Rotor assembly	<a href="#">Buy now</a>
2	<a href="#">6A18556000</a> Base assembly	<a href="#">Buy now</a>
3	<a href="#">6A18552001</a> Coil, charge	<a href="#">Buy now</a>
4	<a href="#">9788505020</a> Screw, pan head (e22)	<a href="#">Buy now</a>
5	<a href="#">9028004M06</a> Key, woodruff(6a1)	<a href="#">Buy now</a>
6	<a href="#">6A18136200</a> Cover, hole 1	<a href="#">Buy now</a>
7	<a href="#">9017010M33</a> Nut(6a1)	<a href="#">Buy now</a>
8	<a href="#">9290310100</a> Ybs67-10 washer, spring	<a href="#">Buy now</a>
9	<a href="#">9701306030</a> Bolt	<a href="#">Buy now</a>
10	<a href="#">9290306100</a> Washer(6a1)	<a href="#">Buy now</a>
11	<a href="#">9290306600</a> Washer, plain (646)	<a href="#">Buy now</a>
12	<a href="#">6638237001</a> Plug cap assembly	<a href="#">Buy now</a>
12	<a href="#">6G18237021</a> Plug cap assembly <b>FOR CAR</b>	<a href="#">Buy now</a>
13	<a href="#">9788005008</a> Screw, with washer	<a href="#">Buy now</a>
14	<a href="#">6A18554001</a> C.d.i. unit assembly	<a href="#">Buy now</a>

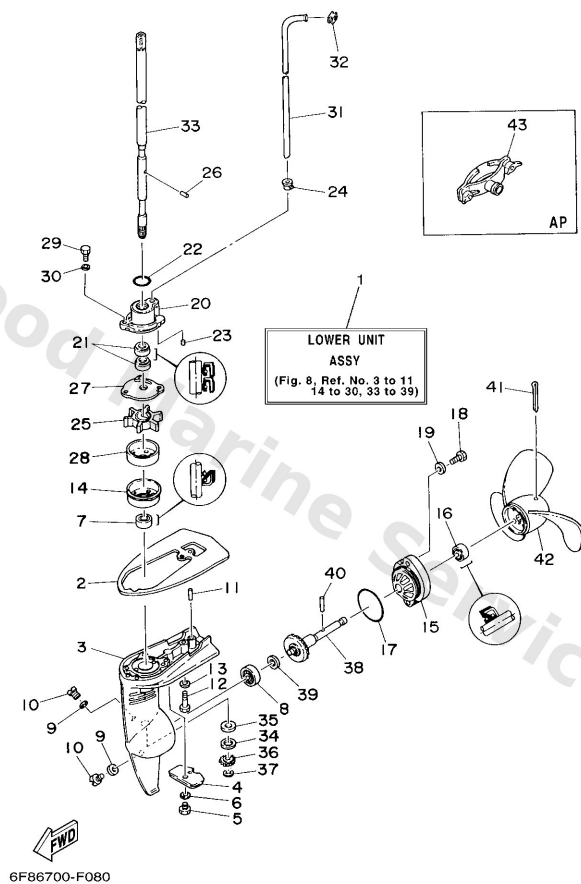


# Generator



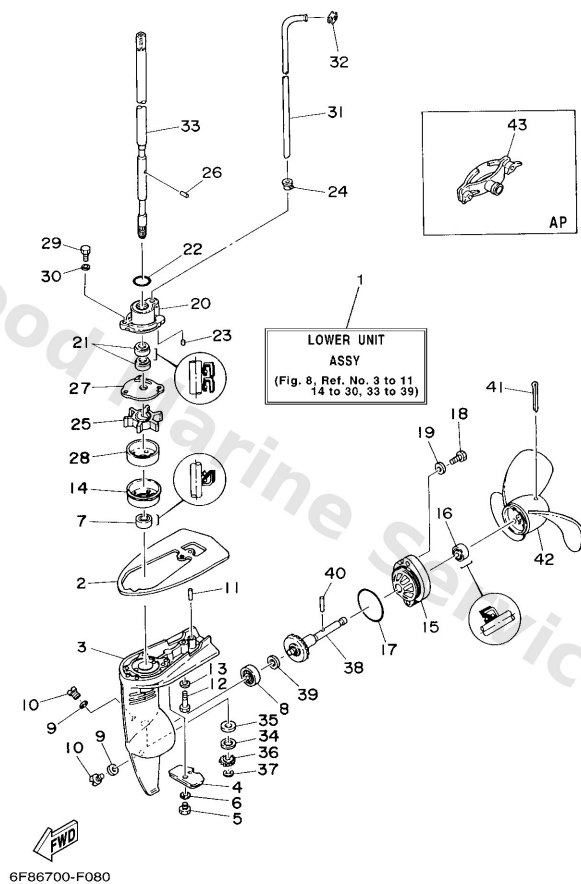
Ref	Part	
15	<a href="#">9788506016</a> Screw, pan head(6b0)	<a href="#">Buy now</a>
16	<a href="#">9299506100</a> Washer(6a1)	<a href="#">Buy now</a>
17	<a href="#">9299506600</a> Washer, plain (646)	<a href="#">Buy now</a>
18	<a href="#">6A18557000</a> Ignition coil assembly	<a href="#">Buy now</a>
19	<a href="#">9709506020</a> Bolt(7u8)	<a href="#">Buy now</a>
21	<a href="#">9046408M07</a> Clamp	<a href="#">Buy now</a>

## Lower Casing & Drive



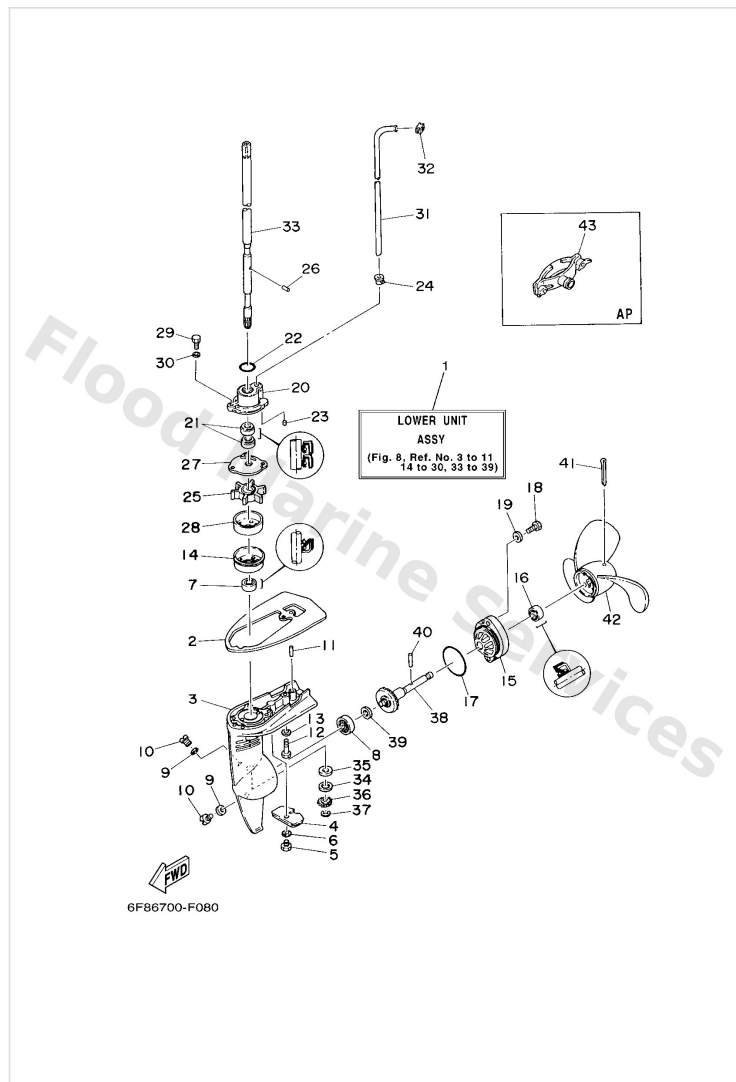
Ref	Part	
1	<a href="#">6A145300034D</a> Lower unit assembly	<a href="#">Buy now</a>
2	<a href="#">6A145181004D</a> Plate	<a href="#">Buy now</a>
3	<a href="#">6A145311024D</a> Casing Lower	<a href="#">Buy now</a>
4	<a href="#">6L54525103</a> Anode	<a href="#">Buy now</a>
5	<a href="#">9589506012</a> Bolt, flange deep recess	<a href="#">Buy now</a>
6	<a href="#">9299006300</a> Washer, tooth	<a href="#">Buy now</a>
7	<a href="#">9310311051</a> Oil seal (11x21x8-646)	<a href="#">Buy now</a>
8	<a href="#">9330600001</a> Brg,r-b 6000 26mm 19g ky	<a href="#">Buy now</a>
9	<a href="#">9043008020</a> Gasket	<a href="#">Buy now</a>
10	<a href="#">9034008002</a> Plug, straight screw	<a href="#">Buy now</a>
11	<a href="#">9360518M04</a> Pin, dowel b (6a1)	<a href="#">Buy now</a>
12	<a href="#">9709506030</a> Bolt(jf7)	<a href="#">Buy now</a>
13	<a href="#">9299506600</a> Washer, plain (646)	<a href="#">Buy now</a>
14	<a href="#">6A14432500</a> Protector, oil seal	<a href="#">Buy now</a>
15	<a href="#">6A145361014D</a> Cap, lower casing	<a href="#">Buy now</a>

## Lower Casing & Drive



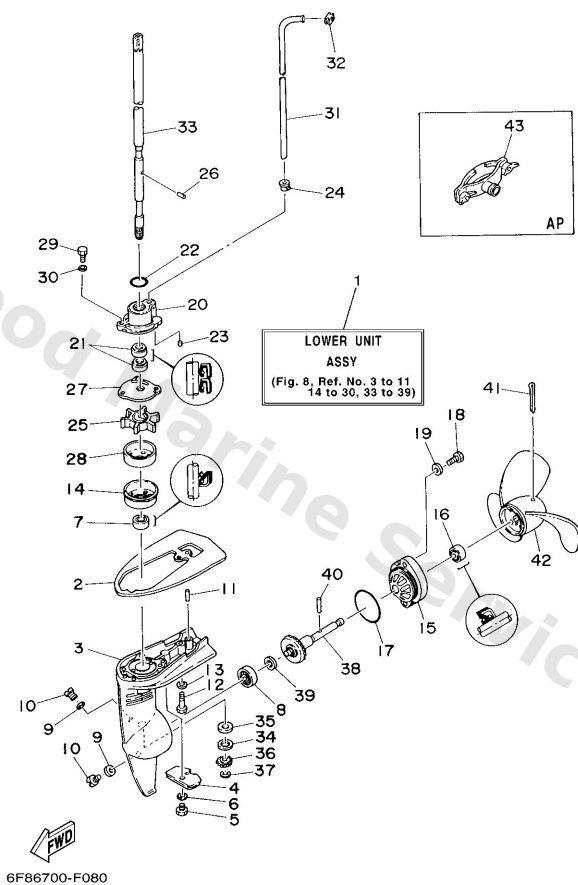
Ref	Part	
16	<a href="#">9310310052</a> Oil seal (10x21x10-646)	<a href="#">Buy now</a>
17	<a href="#">9321042101</a> O-ring (183)	<a href="#">Buy now</a>
18	<a href="#">9709006014</a> Bolt(gj3)	<a href="#">Buy now</a>
19	<a href="#">9299006600</a> Washer, plain (646)	<a href="#">Buy now</a>
20	<a href="#">6A1443120194</a> Cover, water pump housing	<a href="#">Buy now</a>
21	<a href="#">9310111M44</a> Oil seal(6a1)	<a href="#">Buy now</a>
22	<a href="#">9321019123</a> O-ring (646)	<a href="#">Buy now</a>
23	<a href="#">9360409068</a> Pin,dowel (646)	<a href="#">Buy now</a>
24	<a href="#">6464436601</a> Damper, water seal 2	<a href="#">Buy now</a>
25	<a href="#">6464435201</a> Impeller	<a href="#">Buy now</a>
26	<a href="#">9360409066</a> Pin, dowel	<a href="#">Buy now</a>
27	<a href="#">6464432300</a> Outer plate, cartridge	<a href="#">Buy now</a>
28	<a href="#">6464432200</a> Insert, cartridge	<a href="#">Buy now</a>
29	<a href="#">9709505016</a> Bolt(6a1)	<a href="#">Buy now</a>
30	<a href="#">9299505600</a> Washer, plain (646)	<a href="#">Buy now</a>

## Lower Casing & Drive



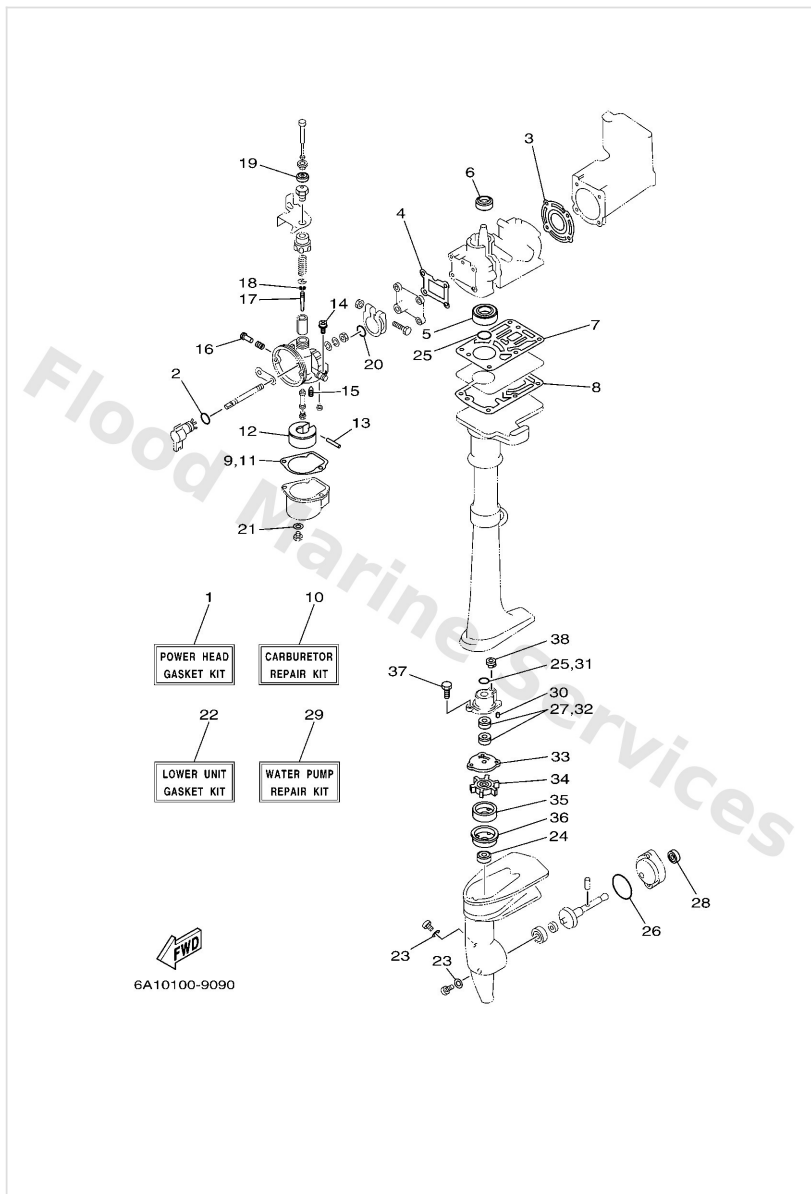
Ref	Part	
31	<a href="#">6A14436100</a> Tube, water	<a href="#">Buy now</a>
32	<a href="#">6464436500</a> Damper, water seal 1	<a href="#">Buy now</a>
33	<a href="#">6A14551001</a> Drive shaft assembly	<a href="#">Buy now</a>
34	<a href="#">902011M49</a> Washer, plate (6e0)	<a href="#">Buy now</a>
35	<a href="#">646455340003</a> Shim (T)0.30Mm UR	<a href="#">Buy now</a>
35	<a href="#">646455340004</a> Shim (T)0.40Mm UR	<a href="#">Buy now</a>
35	<a href="#">646455340005</a> Shim (T)0.50Mm UR	<a href="#">Buy now</a>
36	<a href="#">6464555100</a> Pinion	<a href="#">Buy now</a>
37	<a href="#">9900106600</a> Circlip(53l)	<a href="#">Buy now</a>
38	<a href="#">6464556000</a> Gear	<a href="#">Buy now</a>
39	<a href="#">6464556700</a> Shim (t:0.30mm) UR	<a href="#">Buy now</a>
39	<a href="#">6464556710</a> Shim (t:0.40mm) UR	<a href="#">Buy now</a>
39	<a href="#">6464556720</a> Shim (t:0.50mm) UR	<a href="#">Buy now</a>
40	<a href="#">9025003M10</a> Pin, straight(6a1)	<a href="#">Buy now</a>
41	<a href="#">9149030040</a> Pin, cotter (am5)	<a href="#">Buy now</a>

## Lower Casing & Drive



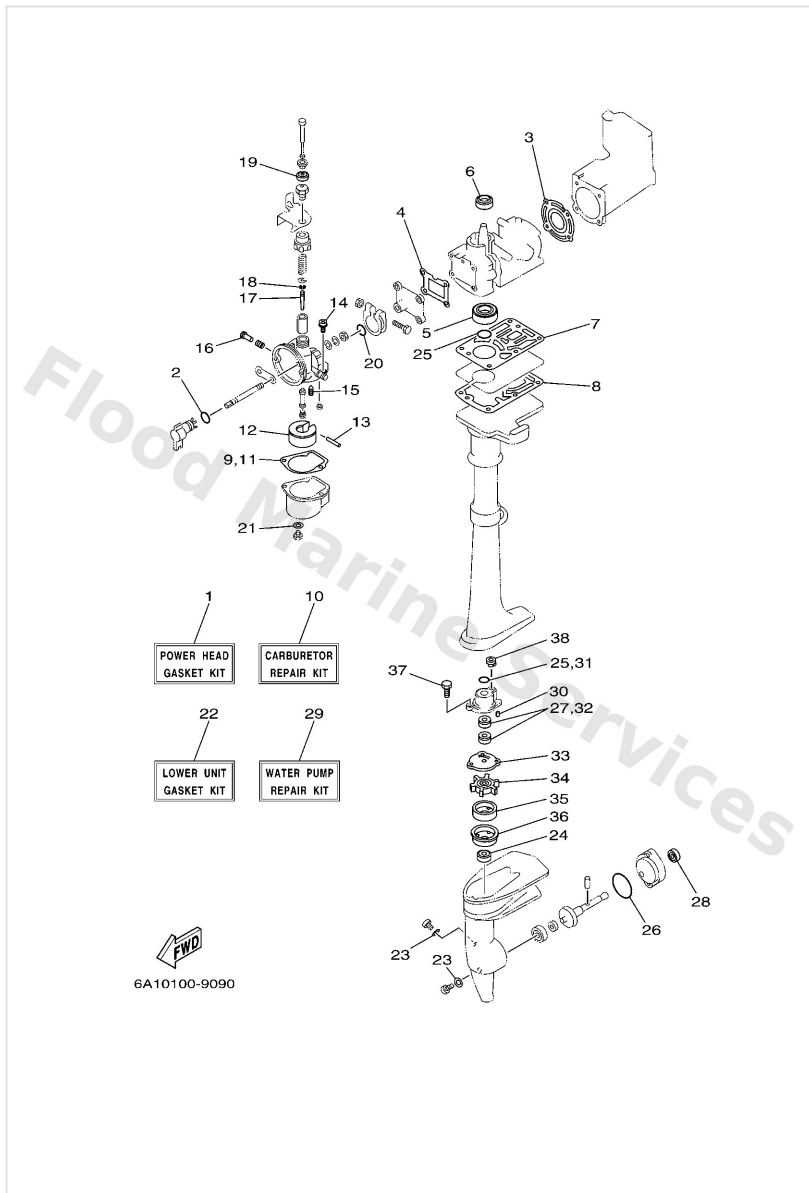
Ref	Part	
42	<a href="#">6464594201EL</a> Propeller (3x7-1/4 x5-1/2 -a) UR	<a href="#">Buy now</a>
42	<a href="#">6464594401EL</a> Propeller (3x7-1/4 x4-1/2 -a) UR	<a href="#">Buy now</a>
42	<a href="#">6A14594300</a> Propeller assembly (3x7-1/4"x4"-a) UR	<a href="#">Buy now</a>
42	<a href="#">6F84594201EL</a> Propeller (al 3x7-1/4"x5"-a) UR	<a href="#">Buy now</a>
43	<a href="#">6462819300</a> Plug, Water Check AP	<a href="#">Buy now</a>

# Repair Kit



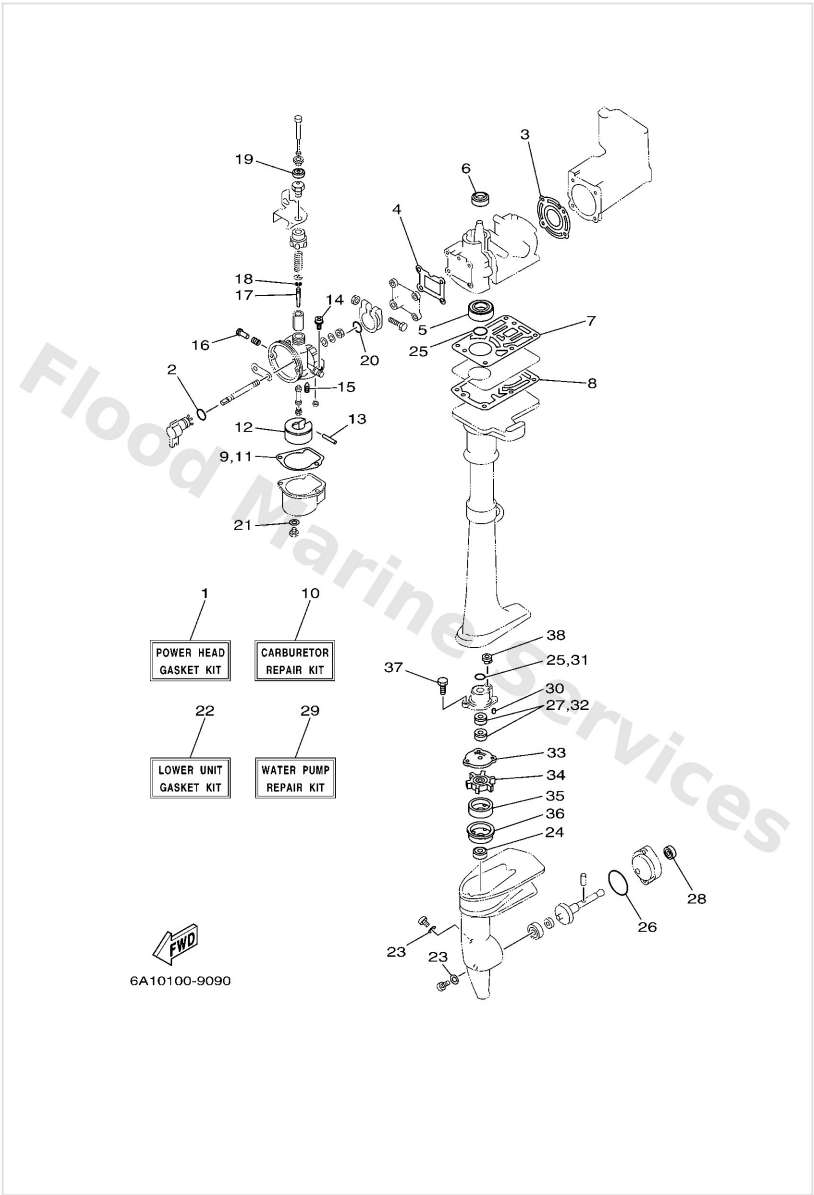
Ref	Part	
1	<a href="#">6F8W0001A1</a> Power head gasket kit	<a href="#">Buy now</a>
2	<a href="#">9321008M29</a> O-ring (6a1)	<a href="#">Buy now</a>
3	<a href="#">6F811181A1</a> Gasket, cylinder head 1	<a href="#">Buy now</a>
4	<a href="#">6A113621A0</a> Gasket, valve seat	<a href="#">Buy now</a>
5	<a href="#">9310215M32</a> Oil seal(6a1)	<a href="#">Buy now</a>
6	<a href="#">9310220070</a> Oil seal	<a href="#">Buy now</a>
7	<a href="#">6A114613A0</a> Gasket,exhaust 1	<a href="#">Buy now</a>
8	<a href="#">64614623A1</a> Gasket, exhaust	<a href="#">Buy now</a>
9	<a href="#">6A11438400</a> Gasket, float chamber	<a href="#">Buy now</a>
10	<a href="#">6F8W009302</a> Carburetor repair kit	<a href="#">Buy now</a>
12	<a href="#">6A11438500</a> Float	<a href="#">Buy now</a>
13	<a href="#">6A11438600</a> Pin, float	<a href="#">Buy now</a>
14	<a href="#">9798004110</a> Screw, pan head (e56)	<a href="#">Buy now</a>
15	<a href="#">6A11439200</a> Valve, needle	<a href="#">Buy now</a>
16	<a href="#">6461421102</a> Screw, pilot adjusting	<a href="#">Buy now</a>

# Repair Kit



Ref	Part	
17	<a href="#">6F81411600</a> Needle	<a href="#">Buy now</a>
18	<a href="#">6461413700</a> Clip	<a href="#">Buy now</a>
19	<a href="#">6461416900</a> -	<a href="#">Buy now</a>
20	<a href="#">6461422901</a> O-ring	<a href="#">Buy now</a>
21	<a href="#">6461419801</a> Gasket	<a href="#">Buy now</a>
22	<a href="#">6A1W000123</a> Lower unit gasket kit	<a href="#">Buy now</a>
23	<a href="#">9043008020</a> Gasket	<a href="#">Buy now</a>
24	<a href="#">9310311051</a> Oil seal (11x21x8-646)	<a href="#">Buy now</a>
25	<a href="#">9321019123</a> O-ring (646)	<a href="#">Buy now</a>
26	<a href="#">9321042101</a> O-ring (183)	<a href="#">Buy now</a>
27	<a href="#">9310111M44</a> Oil seal(6a1)	<a href="#">Buy now</a>
28	<a href="#">9310310052</a> Oil seal (10x21x10-646)	<a href="#">Buy now</a>
29	<a href="#">6A1W007802</a> Water pump repair kit	<a href="#">Buy now</a>
30	<a href="#">9360409068</a> Pin,dowel (646)	<a href="#">Buy now</a>
33	<a href="#">6464432300</a> Outer plate,cartridge	<a href="#">Buy now</a>

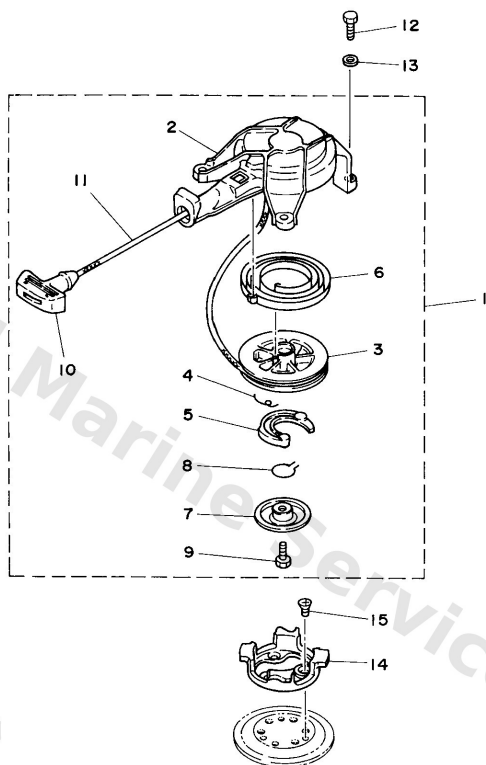
# Repair Kit



Ref	Part	
34	<a href="#">6464435201</a> Impeller	<a href="#">Buy now</a>
35	<a href="#">6464432200</a> Insert, cartridge	<a href="#">Buy now</a>
36	<a href="#">6A14432500</a> Protector, oil seal	<a href="#">Buy now</a>
37	<a href="#">9709505016</a> Bolt(6a1)	<a href="#">Buy now</a>
38	<a href="#">6464436601</a> Damper, water seal 2	<a href="#">Buy now</a>



# Starter



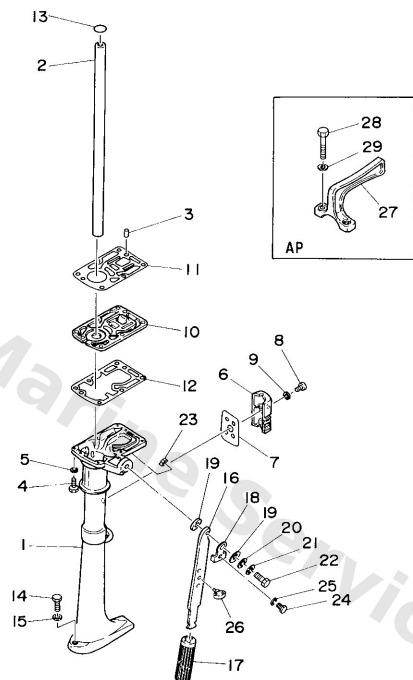
6F83200-C040

\*1: CUT FROM 50M ROLLS, PART NO. 90890-44372. CUTTING LENGTH 1.3M

\*1: CORTE DE UN RODILLO DE 50M, PARTS NUMERO 90890-44372, LARGO DEL CORTE 1.3M

Ref	Part	
1	<a href="#">6A11571000</a> Starter ass'y	<a href="#">Buy now</a>
2	<a href="#">6A11571100</a> Case, starter	<a href="#">Buy now</a>
3	<a href="#">6A11571400</a> Drum, sheave	<a href="#">Buy now</a>
4	<a href="#">6A11576700</a> Spring, return	<a href="#">Buy now</a>
5	<a href="#">6A11574100</a> Pawl, drive	<a href="#">Buy now</a>
6	<a href="#">6A11571300</a> Spring, starter	<a href="#">Buy now</a>
7	<a href="#">6A11571700</a> Plate, drive	<a href="#">Buy now</a>
8	<a href="#">6A11570500</a> Spring, drive pawl	<a href="#">Buy now</a>
9	<a href="#">9732206012</a> Bolt(gh1)	<a href="#">Buy now</a>
10	<a href="#">6A11575502</a> Handle, starter	<a href="#">Buy now</a>
11	<a href="#">*</a> item_description <a href="#">*1</a>	<a href="#">Buy now</a>
12	<a href="#">9709506016</a> Bolt, hexagon deep recess	<a href="#">Buy now</a>
13	<a href="#">9299506600</a> Washer, plain (646)	<a href="#">Buy now</a>
14	<a href="#">6A1157230094</a> Pulley, starter	<a href="#">Buy now</a>
15	<a href="#">9870306012</a> Screw, flat head(6a1)	<a href="#">Buy now</a>

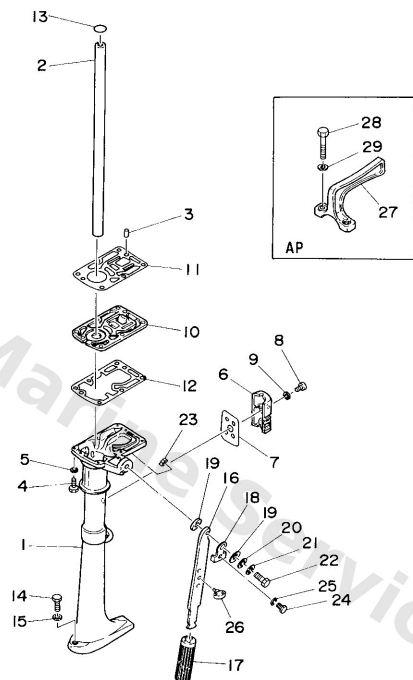
## Upper Casing



  
6F88700-H070

Ref	Part	
1	<a href="#">6A145111034D</a> Casing, upper	<a href="#">Buy now</a>
2	<a href="#">6A14511300</a> Pipe	<a href="#">Buy now</a>
3	<a href="#">9360515065</a> Pin, dowel	<a href="#">Buy now</a>
4	<a href="#">9709506025</a> Bolt	<a href="#">Buy now</a>
5	<a href="#">9299506600</a> Washer, plain (646)	<a href="#">Buy now</a>
6	<a href="#">6A14515100</a> Cover, upper casing	<a href="#">Buy now</a>
7	<a href="#">6A14511500</a> Gasket, upper casing	<a href="#">Buy now</a>
8	<a href="#">9788006016</a> Screw pan head	<a href="#">Buy now</a>
9	<a href="#">9299006600</a> Washer, plain (646)	<a href="#">Buy now</a>
10	<a href="#">6A141137005B</a> Guide,exhaust	<a href="#">Buy now</a>
11	<a href="#">6A114613A0</a> Gasket,exhaust 1	<a href="#">Buy now</a>
12	<a href="#">64614623A1</a> Gasket, exhaust	<a href="#">Buy now</a>
13	<a href="#">9321019123</a> O-ring (646)	<a href="#">Buy now</a>
14	<a href="#">9709506030</a> Bolt(jf7)	<a href="#">Buy now</a>
16	<a href="#">6A142111014D</a> Handle, steering	<a href="#">Buy now</a>

# Upper Casing



  
6F88700-H070

Ref	Part	
17	<a href="#">6464211902</a> Grip, steering handle	<a href="#">Buy now</a>
18	<a href="#">6A14218100</a> Washer	<a href="#">Buy now</a>
19	<a href="#">9020109117</a> Washer 1 6154367300	<a href="#">Buy now</a>
20	<a href="#">9299008200</a> Ybs66-8 washer, plain	<a href="#">Buy now</a>
21	<a href="#">9299008100</a> Ybs67-8 washer, spring	<a href="#">Buy now</a>
22	<a href="#">9010108M11</a> Bolt(6a1)	<a href="#">Buy now</a>
23	<a href="#">9538008600</a> Nut (661)	<a href="#">Buy now</a>
24	<a href="#">9709506010</a> Bolt	<a href="#">Buy now</a>
25	<a href="#">9299506100</a> Washer(6a1)	<a href="#">Buy now</a>
26	<a href="#">6464259100</a> Holder, shear pin	<a href="#">Buy now</a>
27	<a href="#">646421210094</a> Bracket Carrying AP	<a href="#">Buy now</a>
28	<a href="#">9709506055</a> Bolt, hexagon w/w deep recess AP	<a href="#">Buy now</a>
29	<a href="#">9299006100</a> Washer(6a1) AP	<a href="#">Buy now</a>

# Disclaimer

This document is provided for convenience only. It is **not** an official Yamaha publication and is **not supplied, endorsed, or approved** by Yamaha Motor Co., Ltd.

Reasonable efforts are made to keep information accurate; however diagrams, part references, supersessions, descriptions, and applicability may contain errors or omissions. Specifications and part availability may change without notice.

You are responsible for confirming the correct parts for your engine (including model code, year, serial range, and any superseded part numbers) before ordering or fitting.