



# Yamaha 30DMHO 2016

## Parts Manual

[www.floodmarine.co.uk](http://www.floodmarine.co.uk)

+44 2882 246 539

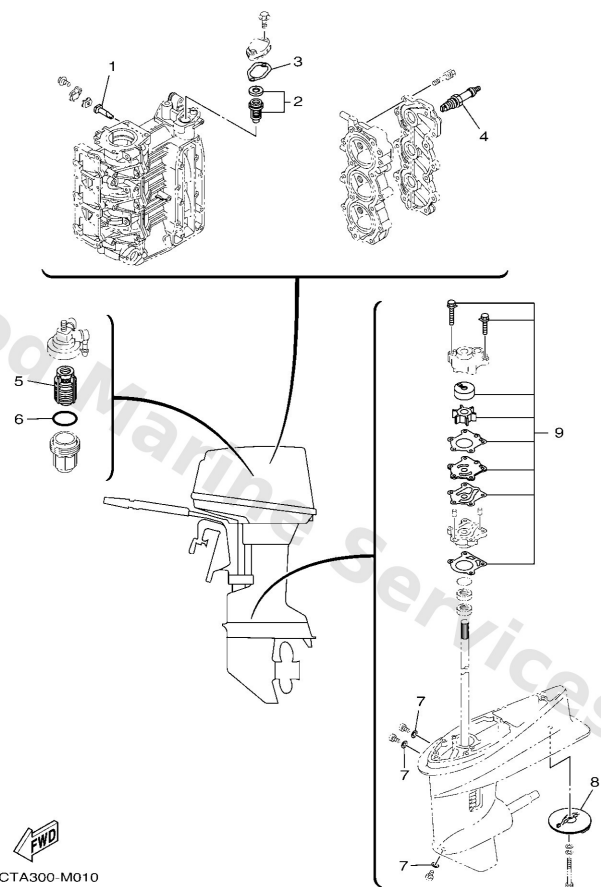
Authorised Yamaha Dealers



# Contents

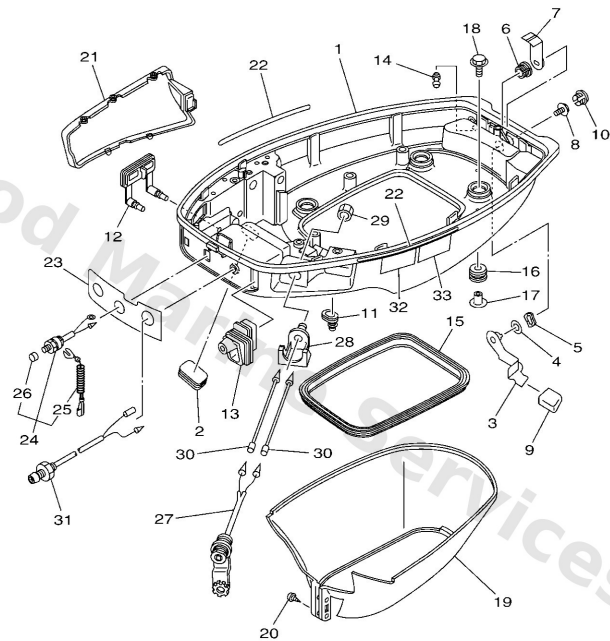
<b>SCHEDULED SERVICE PARTS</b>	3
<b>BOTTOM COWLING</b>	4
<b>BRACKET 1</b>	7
<b>BRACKET 2</b>	11
<b>CARBURETOR</b>	14
<b>CONTROL</b>	17
<b>CRANKSHAFT &amp; PISTON</b>	20
<b>CYLINDER &amp; CRANKCASE</b>	22
<b>ELECTRICAL</b>	25
<b>FUEL</b>	26
<b>FUEL TANK</b>	29
<b>GENERATOR</b>	30
<b>INTAKE</b>	32
<b>LOWER CASING &amp; DRIVE 1</b>	34
<b>LOWER CASING &amp; DRIVE 2</b>	39
<b>OIL PUMP</b>	42
<b>REMO CON ATTACHMENT</b>	46
<b>REPAIR KIT 1</b>	48
<b>REPAIR KIT 2</b>	50
<b>STARTER</b>	52
<b>STEERING</b>	55
<b>TOP COWLING</b>	58
<b>UPPER CASING</b>	59

## Scheduled Service Parts



Ref	Part	
1	<a href="#">6J81132500</a> Anode	<a href="#">Buy now</a>
2	<a href="#">6881241111</a> Thermostat	<a href="#">Buy now</a>
3	<a href="#">6J812414A0</a> Gasket, cover	<a href="#">Buy now</a>
4	<a href="#">9470200271</a> Plug, spark (br7hs-10)	<a href="#">Buy now</a>
5	<a href="#">61N2456300</a> Element, filter	<a href="#">Buy now</a>
6	<a href="#">9321032738</a> O-ring(1wg)	<a href="#">Buy now</a>
7	<a href="#">9043008003</a> Gasket	<a href="#">Buy now</a>
8	<a href="#">6644537101</a> Tab-trim	<a href="#">Buy now</a>
9	<a href="#">6J8W0078A2</a> Water pump repair kit	<a href="#">Buy now</a>

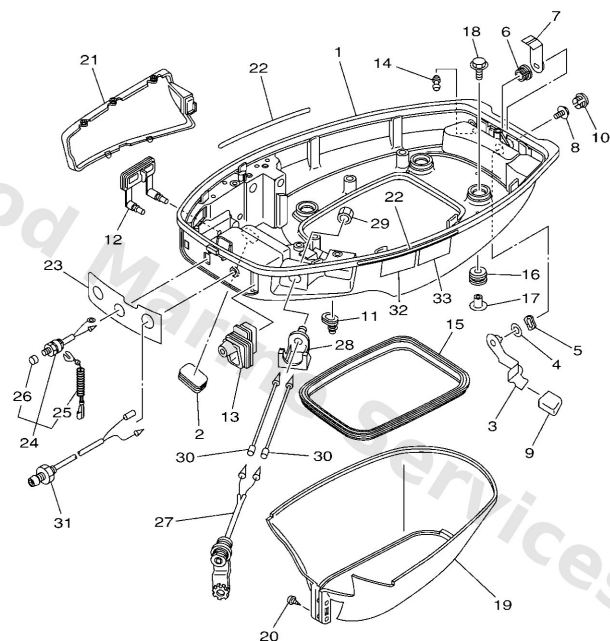
## Bottom Cowling



6CTG300-Q120

Ref	Part	
1	<a href="#">6J842711038D</a> Cowling, bottom 1	<a href="#">Buy now</a>
2	<a href="#">6H44272600</a> Grommet	<a href="#">Buy now</a>
3	<a href="#">6J842815004D</a> Lever, clamp	<a href="#">Buy now</a>
4	<a href="#">9020212M25</a> Washer, plate(6j8)	<a href="#">Buy now</a>
5	<a href="#">9020612052</a> Washer, wave (666)	<a href="#">Buy now</a>
6	<a href="#">9038612M61</a> Bush(6j8)	<a href="#">Buy now</a>
7	<a href="#">6J84281600</a> Lever, clamp	<a href="#">Buy now</a>
8	<a href="#">9589506012</a> Bolt, flange deep recess	<a href="#">Buy now</a>
9	<a href="#">6J84283100</a> Bushing	<a href="#">Buy now</a>
10	<a href="#">6J84272801</a> Cap	<a href="#">Buy now</a>
11	<a href="#">6G14272700</a> Grommet	<a href="#">Buy now</a>
12	<a href="#">6J84272400</a> Grommet	<a href="#">Buy now</a>
13	<a href="#">6J84272600</a> Grommet	<a href="#">Buy now</a>
14	<a href="#">6BL4439100</a> Nipple, hose	<a href="#">Buy now</a>
15	<a href="#">6J84271600</a> Rubber seal 1	<a href="#">Buy now</a>

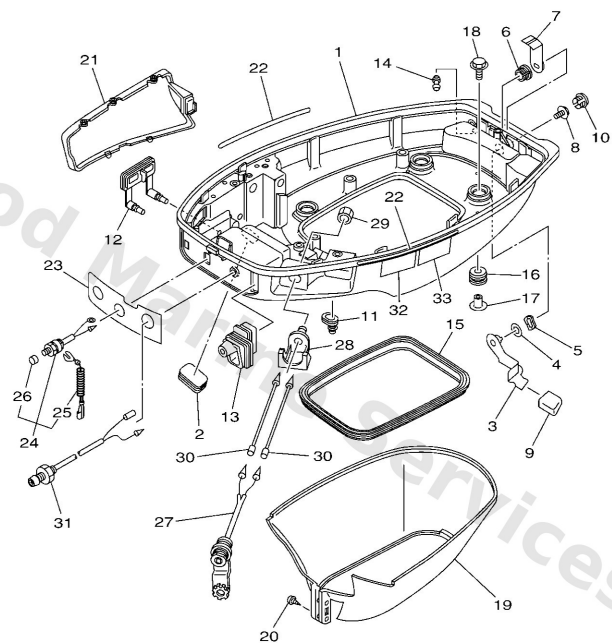
## Bottom Cowling



  
6CTG300-Q120

Ref	Part	
16	<a href="#">9048009M21</a> Grommet (6e9)	<a href="#">Buy now</a>
17	<a href="#">9038706M41</a> Collar (6e9)	<a href="#">Buy now</a>
18	<a href="#">9011906M61</a> Bolt, with washer	<a href="#">Buy now</a>
19	<a href="#">6J84274101</a> Apron	<a href="#">Buy now</a>
20	<a href="#">9016406M01</a> Screw (6f5)	<a href="#">Buy now</a>
21	<a href="#">6J84272301</a> Cover, bottom	<a href="#">Buy now</a>
22	<a href="#">6J84273500</a> Protector	<a href="#">Buy now</a>
23	<a href="#">6J84271920</a> Panel, front lower	<a href="#">Buy now</a>
24	<a href="#">6898257504</a> Engine stop switch assembly	<a href="#">Buy now</a>
25	<a href="#">6828255600</a> Lanyard, stop switch	<a href="#">Buy now</a>
26	<a href="#">6898257Y00</a> Cap	<a href="#">Buy now</a>
27	<a href="#">6828438100</a> 2p concent 1	<a href="#">Buy now</a>
28	<a href="#">6J88438700</a> Holder	<a href="#">Buy now</a>
29	<a href="#">6638255700</a> Nut	<a href="#">Buy now</a>
30	<a href="#">6J88255300</a> Extension, wire lead	<a href="#">Buy now</a>

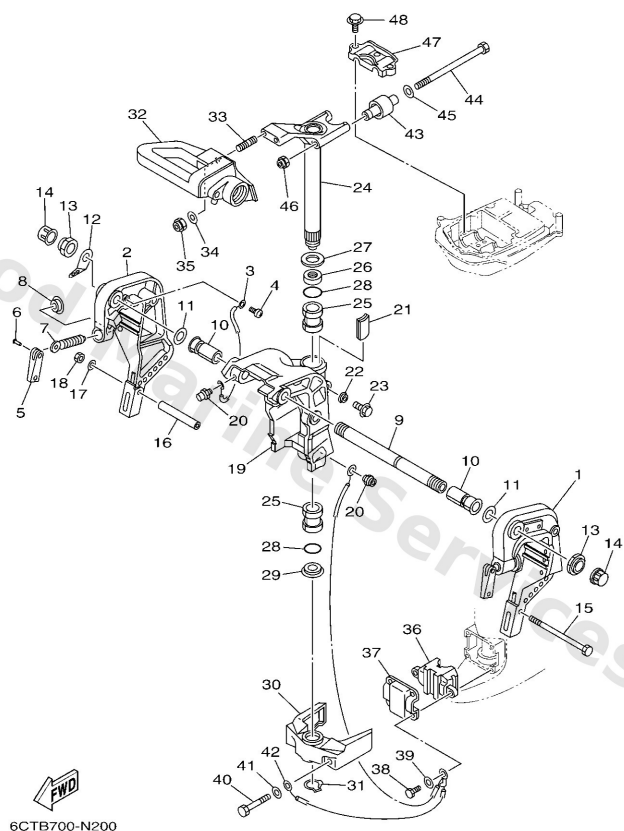
## Bottom Cowling



  
 6CTG300-Q120

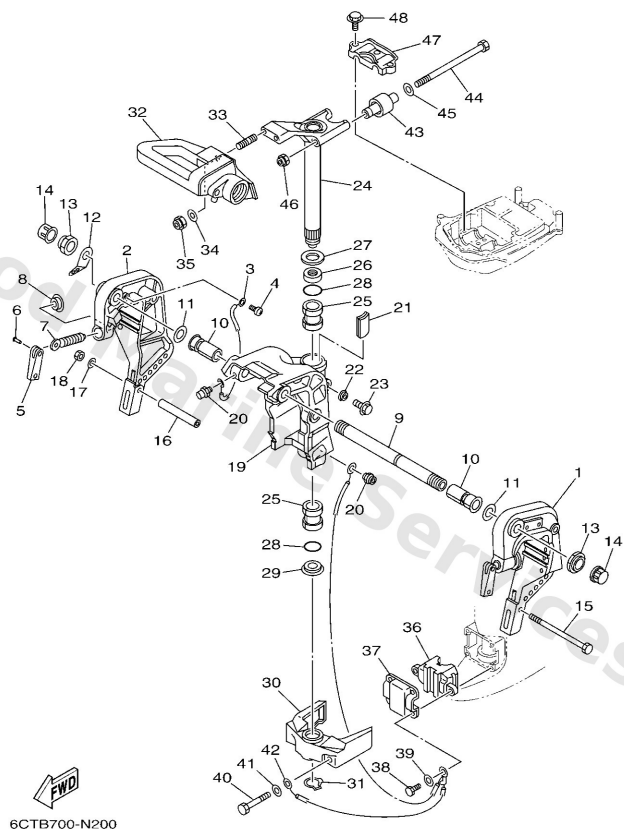
Ref	Part	
31	<a href="#">6J88541000</a> Emergency signal light assembly	<a href="#">Buy now</a>
32	<a href="#">6EE4279440</a> Label, warning (general)	<a href="#">Buy now</a>
33	<a href="#">6EE4279450</a> Label, warning (general)	<a href="#">Buy now</a>

# Bracket 1



Ref	Part	
1	<a href="#">6H443111058D</a> Bracket, clamp 1	<a href="#">Buy now</a>
2	<a href="#">6H443112048D</a> Bracket, clamp 2	<a href="#">Buy now</a>
3	<a href="#">6E58214800</a> Wire, lead 5	<a href="#">Buy now</a>
4	<a href="#">9788506008</a> Screw, pan head(6a3)	<a href="#">Buy now</a>
5	<a href="#">6E04311801</a> Handle, transom clamp	<a href="#">Buy now</a>
6	<a href="#">9024304M01</a> Pin(6a1)	<a href="#">Buy now</a>
7	<a href="#">9014914M12</a> Screw(6h4)	<a href="#">Buy now</a>
8	<a href="#">6484311401</a> Pad, transom clamp	<a href="#">Buy now</a>
9	<a href="#">6J84313101</a> Bolt, clamp bracket	<a href="#">Buy now</a>
10	<a href="#">9038622M69</a> Bush(6k9)	<a href="#">Buy now</a>
11	<a href="#">9020122M03</a> Washer, plate(64j)	<a href="#">Buy now</a>
12	<a href="#">6J84311301</a> Plate, clamp bracket	<a href="#">Buy now</a>
13	<a href="#">9018522043</a> Nut, self-locking	<a href="#">Buy now</a>
14	<a href="#">6G54314501</a> Cap, clamp bracket	<a href="#">Buy now</a>
15	<a href="#">9010108339</a> Bolt, hexagon (656)	<a href="#">Buy now</a>

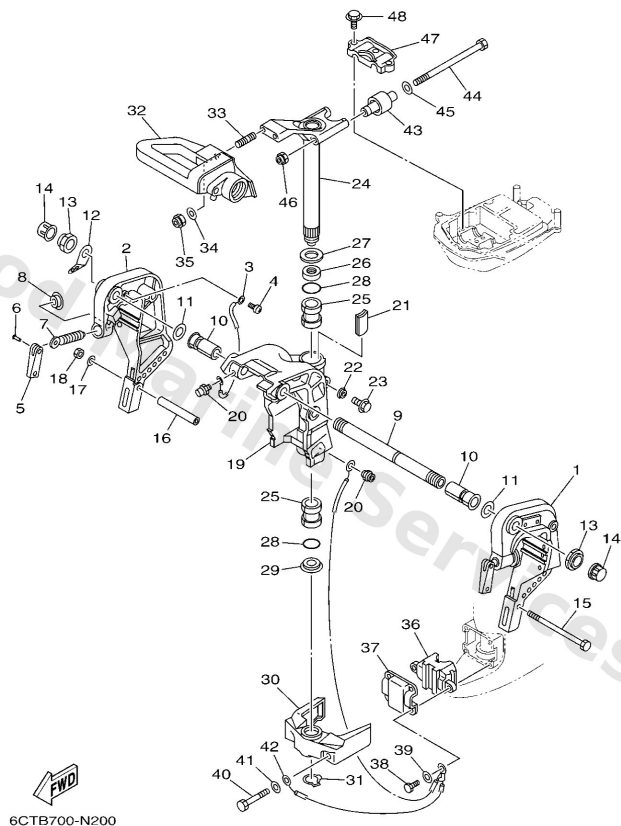
# Bracket 1



Ref	Part	
16	<a href="#">9038708M03</a> Collar	<a href="#">Buy now</a>
17	<a href="#">9299008600</a> Washer, plain (663)	<a href="#">Buy now</a>
18	<a href="#">9538008600</a> Nut (661)	<a href="#">Buy now</a>
19	<a href="#">6J843311048D</a> Bracket, swivel 1	<a href="#">Buy now</a>
20	<a href="#">9370006M03</a> Nipple, grease(6a1)	<a href="#">Buy now</a>
21	<a href="#">6J84252800</a> Plate, friction	<a href="#">Buy now</a>
22	<a href="#">6894337301</a> Seal, damper	<a href="#">Buy now</a>
23	<a href="#">9010506M18</a> Bolt (689)	<a href="#">Buy now</a>
24	<a href="#">6J842510038D</a> Steering bracket assembly	<a href="#">Buy now</a>
25	<a href="#">9038630M77</a> Bush(6h0)	<a href="#">Buy now</a>
26	<a href="#">9038630M78</a> Bush(6h0)	<a href="#">Buy now</a>
27	<a href="#">9020130M00</a> Washer, plate(6h1)	<a href="#">Buy now</a>
28	<a href="#">9321029M94</a> O-ring(6h1)	<a href="#">Buy now</a>
29	<a href="#">9038630M60</a> Bush(6j8)	<a href="#">Buy now</a>
30	<a href="#">6H444551028D</a> Housing, lower mount rubber 1	<a href="#">Buy now</a>

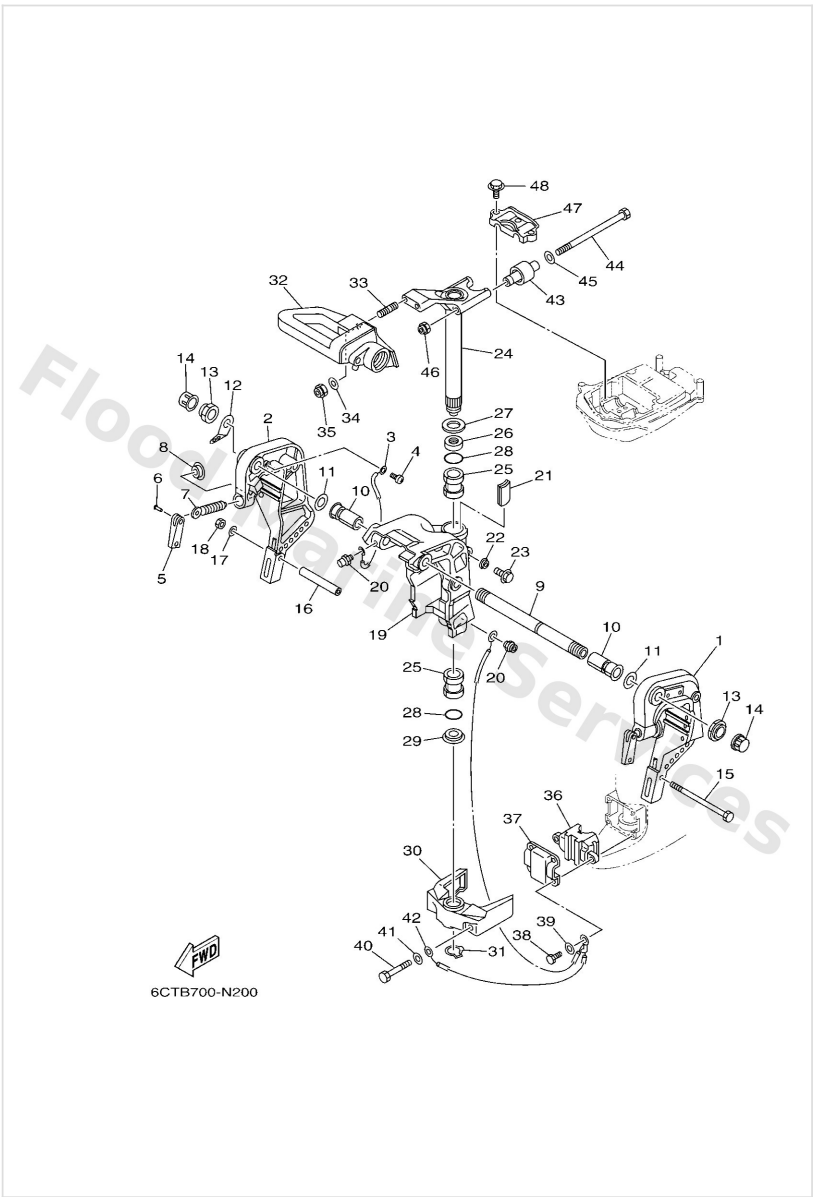


# Bracket 1



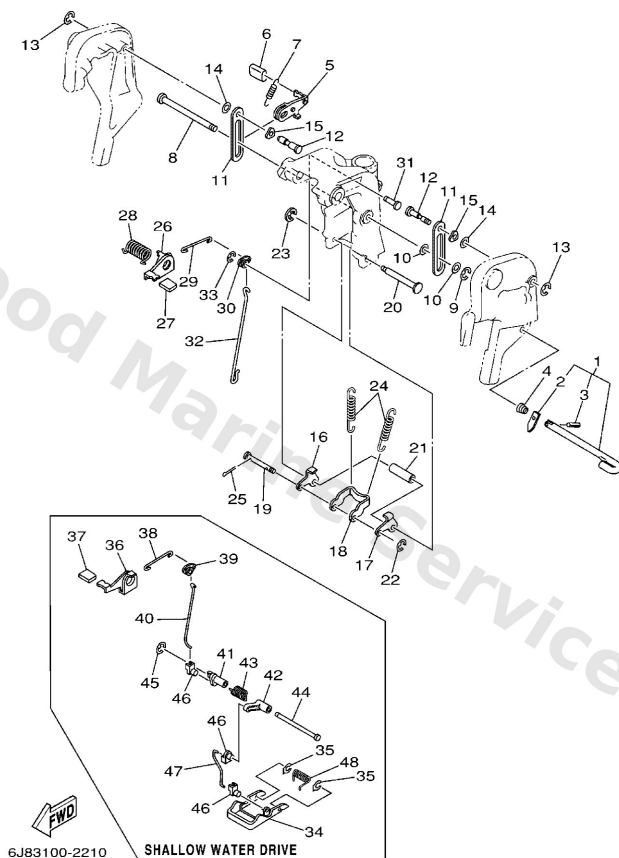
Ref	Part	
31	<a href="#">9341028M06</a> Circlip (688)	<a href="#">Buy now</a>
32	<a href="#">6J842121038D</a> Bracket	<a href="#">Buy now</a>
33	<a href="#">9011610063</a> Bolt, stud	<a href="#">Buy now</a>
34	<a href="#">9299510600</a> Washer, plate	<a href="#">Buy now</a>
35	<a href="#">9018510027</a> Nut, self-locking	<a href="#">Buy now</a>
36	<a href="#">6H44455710</a> Mount, lower front L(21.5")	<a href="#">Buy now</a>
37	<a href="#">6H44455301</a> Cover, lower mount	<a href="#">Buy now</a>
38	<a href="#">9709508025</a> Bolt (62g)	<a href="#">Buy now</a>
39	<a href="#">9299508600</a> Washer, plain (663)	<a href="#">Buy now</a>
40	<a href="#">9709510060</a> Bolt, hexagon	<a href="#">Buy now</a>
42	<a href="#">6H48212700</a> Wire, lead 2	<a href="#">Buy now</a>
43	<a href="#">6H44451400</a> Mount, upper side	<a href="#">Buy now</a>
44	<a href="#">9010908M26</a> Bolt(6j8)	<a href="#">Buy now</a>
45	<a href="#">9020109425</a> Washer, plate (663)	<a href="#">Buy now</a>
46	<a href="#">9018508018</a> Nut, self-locking	<a href="#">Buy now</a>

# Bracket 1



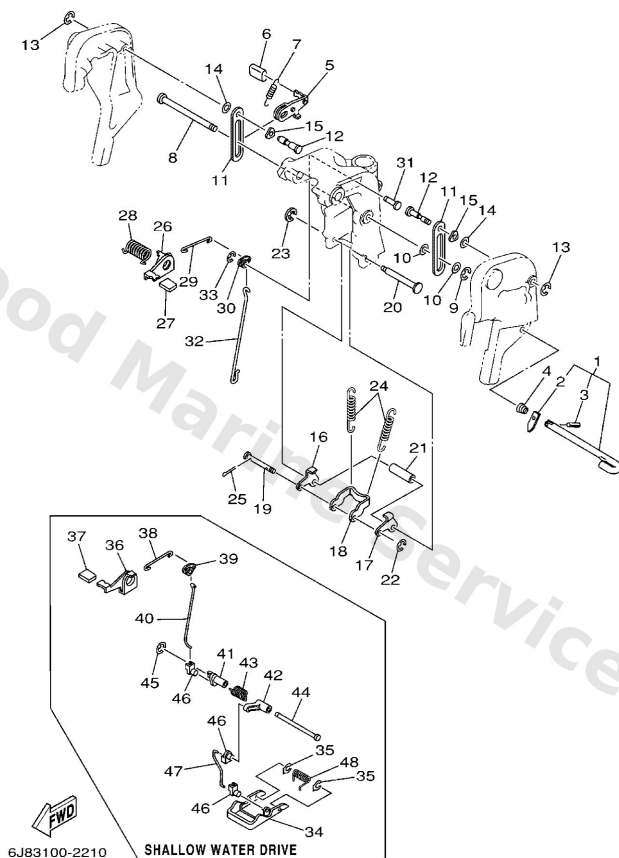
Ref	Part	
47	<a href="#">6J84451100</a> Cover, upper mount	<a href="#">Buy now</a>
48	<a href="#">9757508535</a> Bolt(70w)	<a href="#">Buy now</a>

## Bracket 2



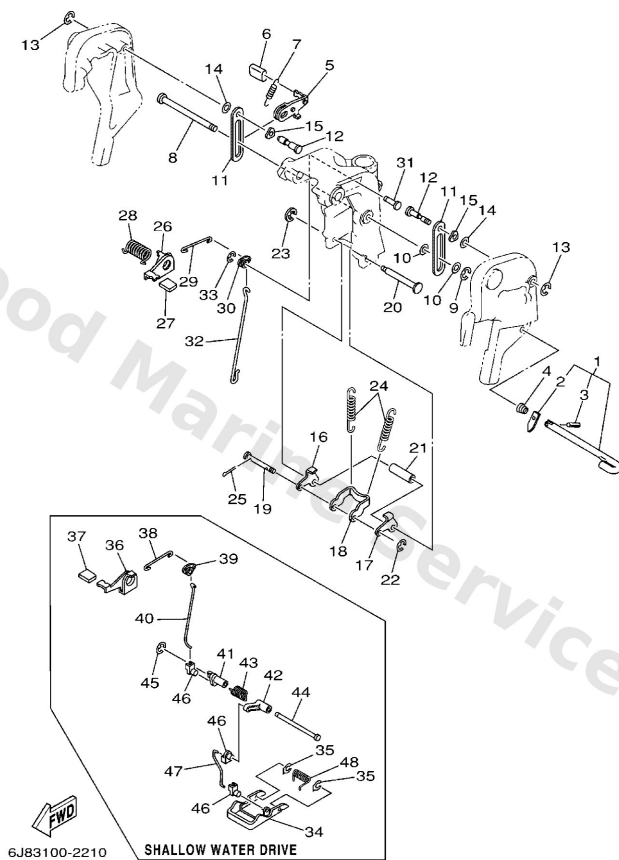
Ref	Part	
1	<a href="#">6H44316001</a> Tilt rod assembly	<a href="#">Buy now</a>
2	<a href="#">6764316500</a> Stopper plate, titl lock rod	<a href="#">Buy now</a>
3	<a href="#">9169030010</a> Pin, spring (663)	<a href="#">Buy now</a>
4	<a href="#">9050210M04</a> Spring, conical(6f5)	<a href="#">Buy now</a>
5	<a href="#">6J84318101</a> Lever, tilt stop 1	<a href="#">Buy now</a>
6	<a href="#">6824331801</a> Cover	<a href="#">Buy now</a>
7	<a href="#">9050612M25</a> Spring, tension(6h4)	<a href="#">Buy now</a>
8	<a href="#">9024912M28</a> Pin(6h4)	<a href="#">Buy now</a>
9	<a href="#">9908010600</a> Circlip	<a href="#">Buy now</a>
10	<a href="#">9020212031</a> Washer, plate 6484412600	<a href="#">Buy now</a>
11	<a href="#">6J84362700</a> Stopper	<a href="#">Buy now</a>
12	<a href="#">9024912M27</a> Pin(6f6)	<a href="#">Buy now</a>
15	<a href="#">9020612M16</a> Washer, wave(6j8)	<a href="#">Buy now</a>
16	<a href="#">6J84361400</a> Plate, tilt lock	<a href="#">Buy now</a>
17	<a href="#">6J84361500</a> Plate, tilt lock	<a href="#">Buy now</a>

## Bracket 2



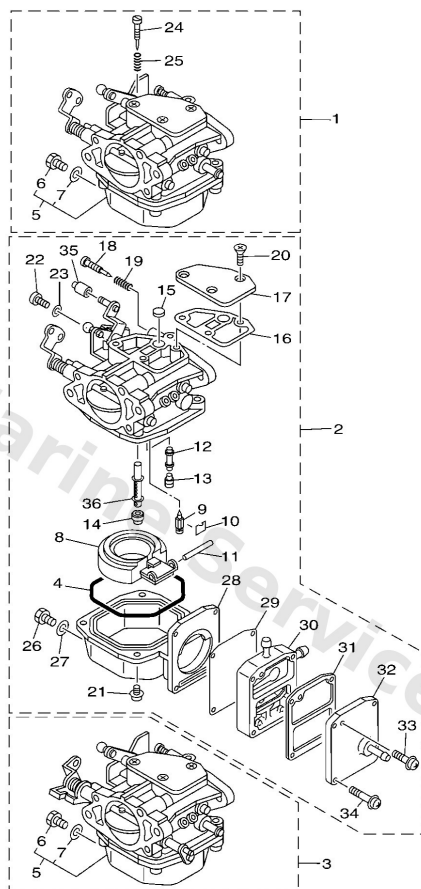
Ref	Part	
18	<a href="#">6J84361301</a> Arm, tilt lock	<a href="#">Buy now</a>
19	<a href="#">6H44365900</a> Shaft, reverse lock	<a href="#">Buy now</a>
20	<a href="#">6J84361101</a> Shaft, tilt lock	<a href="#">Buy now</a>
21	<a href="#">9038707M64</a> Collar (6h4)	<a href="#">Buy now</a>
22	<a href="#">9343006M02</a> Circlip (689)	<a href="#">Buy now</a>
23	<a href="#">9908005600</a> Circlip(22k)	<a href="#">Buy now</a>
24	<a href="#">9050632M22</a> Spring, tension(6j8)	<a href="#">Buy now</a>
25	<a href="#">9149020010</a> Pin, cotter	<a href="#">Buy now</a>
26	<a href="#">6J84363100</a> Lever, tilt	<a href="#">Buy now</a>
27	<a href="#">6J84363300</a> Cover, tilt lever	<a href="#">Buy now</a>
28	<a href="#">9050818M23</a> Spring, torsion(6h4)	<a href="#">Buy now</a>
29	<a href="#">6H44361600</a> Rod, tilt lock 1	<a href="#">Buy now</a>
30	<a href="#">6J84364100</a> Lever, tilt	<a href="#">Buy now</a>
31	<a href="#">9024906M24</a> Pin(6h4)	<a href="#">Buy now</a>
32	<a href="#">6J84361700</a> Rod, tilt lock	<a href="#">Buy now</a>

## Bracket 2



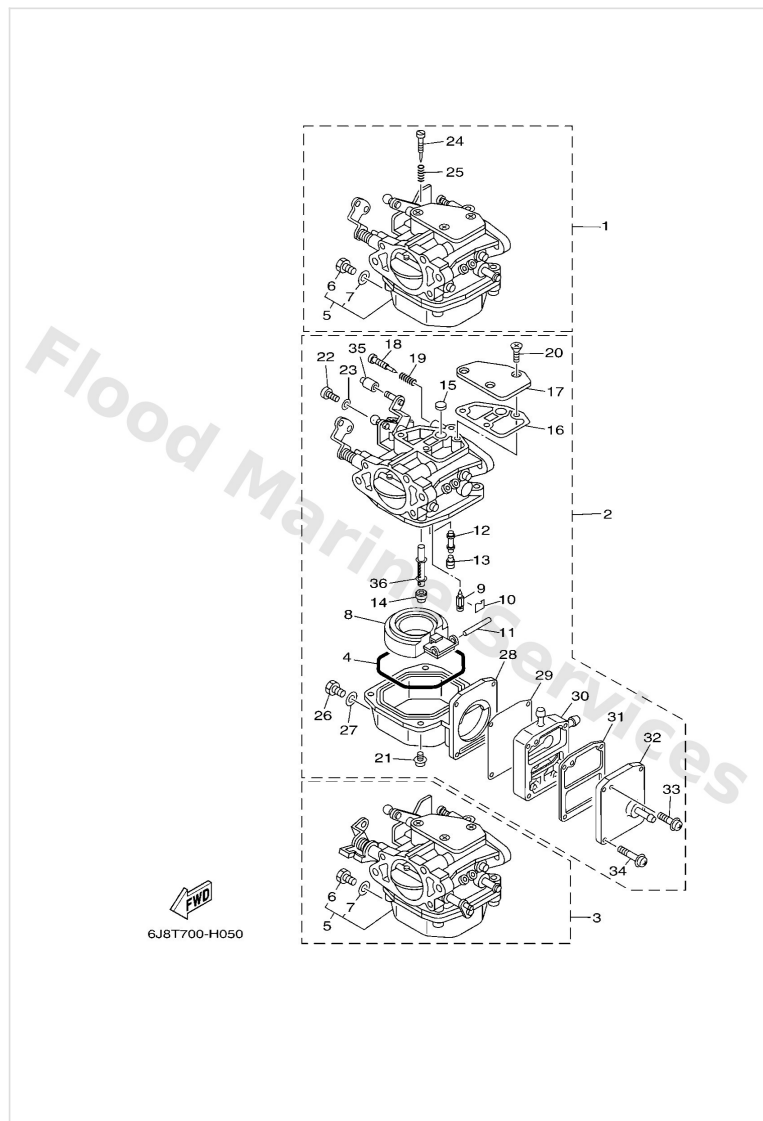
Ref	Part	
34	<a href="#">6J84368101</a> Lever, shallow water drive	<a href="#">Buy now</a>
35	<a href="#">6J84367300</a> Washer 1	<a href="#">Buy now</a>
36	<a href="#">6J84363110</a> Lever, tilt	<a href="#">Buy now</a>
40	<a href="#">6J84361710</a> Rod, tilt lock	<a href="#">Buy now</a>
41	<a href="#">6J84318600</a> Lever	<a href="#">Buy now</a>
42	<a href="#">6J84318700</a> Lever 2	<a href="#">Buy now</a>
43	<a href="#">9050825M21</a> Spring, torsion(6h4)	<a href="#">Buy now</a>
44	<a href="#">9024907M25</a> Pin(6h4)	<a href="#">Buy now</a>
46	<a href="#">6J84126200</a> Joint, choke lever	<a href="#">Buy now</a>
47	<a href="#">6J84361610</a> Rod, tilt lock	<a href="#">Buy now</a>
48	<a href="#">9050820M22</a> Spring, torsion(6h4)	<a href="#">Buy now</a>

# Carburetor



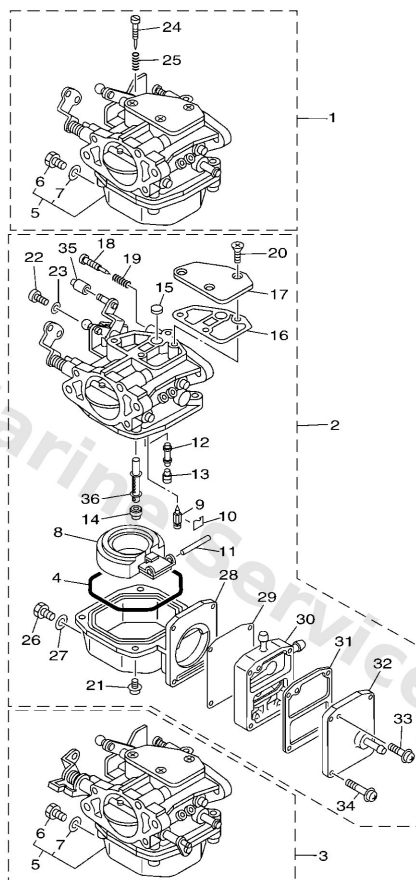
Ref	Part	
1	<a href="#">6J81430112</a> Carburetor assembly 1	<a href="#">Buy now</a>
2	<a href="#">6J81430202</a> Carburetor assembly 2	<a href="#">Buy now</a>
3	<a href="#">6J81430302</a> Carburetor assembly 3	<a href="#">Buy now</a>
4	<a href="#">6J81498410</a> Gasket, float chamber	<a href="#">Buy now</a>
5	<a href="#">6J81498010</a> Body, float chamber #1,3	<a href="#">Buy now</a>
26	<a href="#">6E51438301</a> Screw, drain #2	<a href="#">Buy now</a>
27	<a href="#">6J81499500</a> Gasket, drin screw #2	<a href="#">Buy now</a>
8	<a href="#">6J81498510</a> Float	<a href="#">Buy now</a>
9	<a href="#">6E51454600</a> Valve, needle	<a href="#">Buy now</a>
10	<a href="#">6J81415900</a> Clip	<a href="#">Buy now</a>
11	<a href="#">6E51438601</a> Pin, float	<a href="#">Buy now</a>
12	<a href="#">6J81492F24</a> Jet, air slow	<a href="#">Buy now</a>
13	<a href="#">6J81496600</a> Plug	<a href="#">Buy now</a>
14	<a href="#">6J81492E4K</a> Jet, main	<a href="#">Buy now</a>
15	<a href="#">6J81412600</a> Plug	<a href="#">Buy now</a>

# Carburetor



Ref	Part	
16	<a href="#">6J81495910</a> Gasket	<a href="#">Buy now</a>
17	<a href="#">6J81452710</a> Plate	<a href="#">Buy now</a>
18	<a href="#">6J81492300</a> Screw, pilot	<a href="#">Buy now</a>
19	<a href="#">6E51422300</a> Spring, air adjusting	<a href="#">Buy now</a>
20	<a href="#">9798004108</a> Screw, with washer(6m6)	<a href="#">Buy now</a>
21	<a href="#">9798004112</a> Screw, pan head (686)	<a href="#">Buy now</a>
22	<a href="#">6J81459201</a> Screw	<a href="#">Buy now</a>
23	<a href="#">9299005600</a> Washer, plain (646)	<a href="#">Buy now</a>
24	<a href="#">6J81452300</a> Screw, stop #1	<a href="#">Buy now</a>
25	<a href="#">6J81433400</a> Spring, throttle #1	<a href="#">Buy now</a>
28	<a href="#">6J81498110</a> Body, float chamber #2	<a href="#">Buy now</a>
29	<a href="#">6J82447100</a> Diaphragm #2	<a href="#">Buy now</a>
30	<a href="#">6J82441500</a> Body comp (with valve) #2	<a href="#">Buy now</a>
31	<a href="#">6J82443200</a> Gasket, fuel pump 2 #2	<a href="#">Buy now</a>
32	<a href="#">6J82445200</a> Cover #2	<a href="#">Buy now</a>

# Carburetor

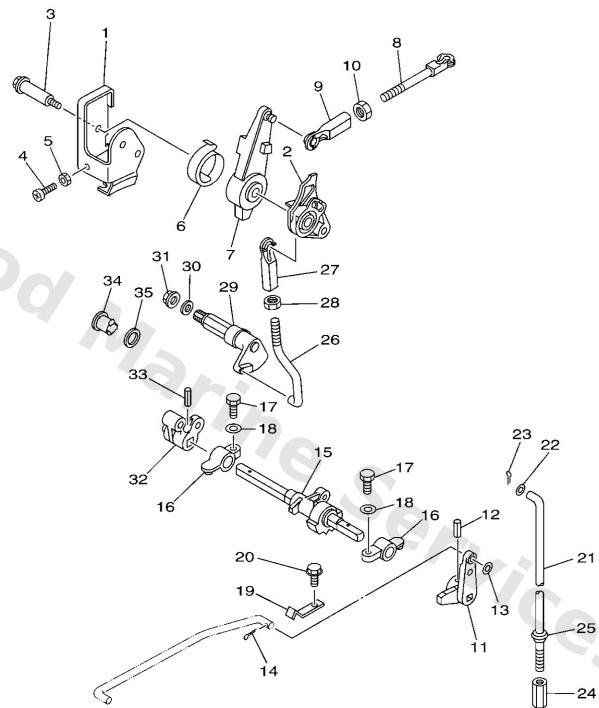


6J8T700-H050

Ref	Part	
33	<a href="#">9798003122</a> Screw, with washer(6j8) #2	<a href="#">Buy now</a>
34	<a href="#">9798004124</a> Screw, with washer(6j8) #2	<a href="#">Buy now</a>
35	<a href="#">6J81457800</a> Collar #2	<a href="#">Buy now</a>
36	<a href="#">6J81492A00</a> Nozzle, main	<a href="#">Buy now</a>



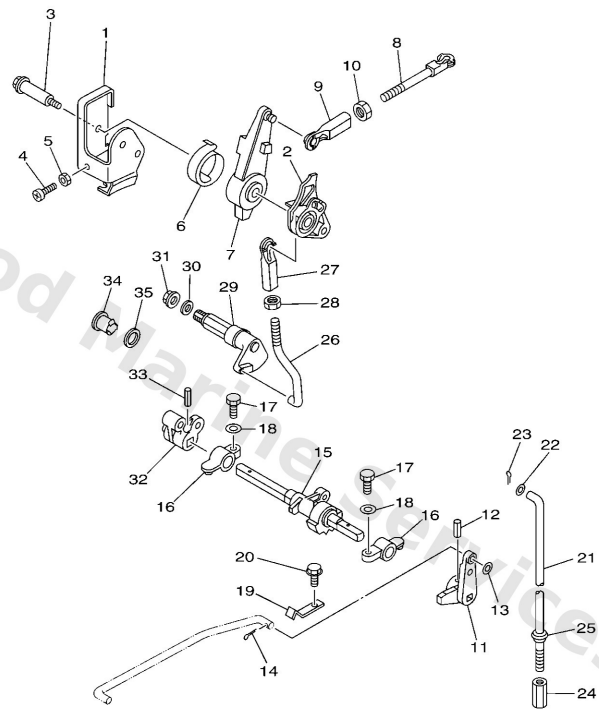
# Control



6J8L300-F160

Ref	Part	
1	<a href="#">6J81449700</a> Stay, throttle wire	<a href="#">Buy now</a>
2	<a href="#">6J84121300</a> Cam, accel.	<a href="#">Buy now</a>
3	<a href="#">9010906M28</a> Bolt(6j8)	<a href="#">Buy now</a>
4	<a href="#">9788006025</a> Screw, pan head(6b0)	<a href="#">Buy now</a>
5	<a href="#">9530306600</a> Nut(661)	<a href="#">Buy now</a>
6	<a href="#">6J84216700</a> Spring 1	<a href="#">Buy now</a>
7	<a href="#">6J84163102</a> Lever, magneto control	<a href="#">Buy now</a>
8	<a href="#">6894216901</a> Joint	<a href="#">Buy now</a>
9	<a href="#">6824123700</a> Joint, link 2	<a href="#">Buy now</a>
10	<a href="#">9538005600</a> Nut, hexagon (663)	<a href="#">Buy now</a>
11	<a href="#">6J84412300</a> Arm, shift rod	<a href="#">Buy now</a>
12	<a href="#">9025403M04</a> Pin, spring (6h3)	<a href="#">Buy now</a>
13	<a href="#">9299006200</a> Ybs66-6 washer, plain	<a href="#">Buy now</a>
14	<a href="#">9149020012</a> Pin, cotter (648)	<a href="#">Buy now</a>
15	<a href="#">6J84412101</a> Lever, shift rod	<a href="#">Buy now</a>

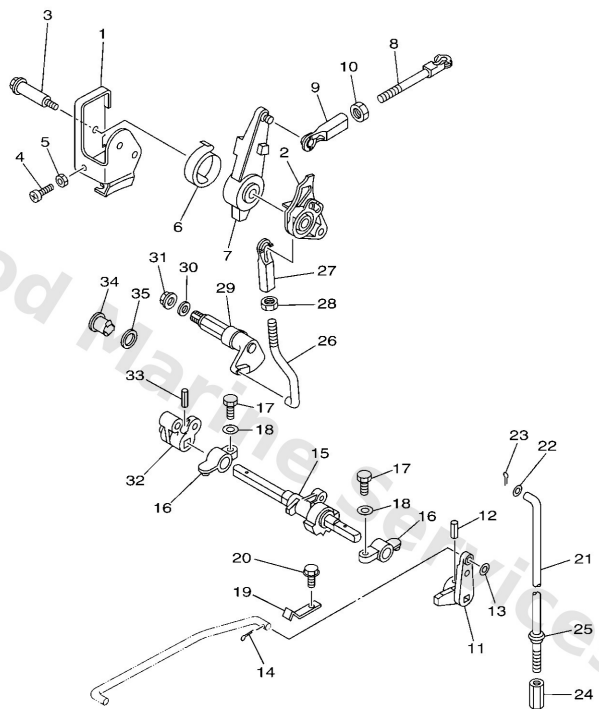
# Control



6J8L300-F160

Ref	Part	
16	<a href="#">6G1416620194</a> Bracket	<a href="#">Buy now</a>
17	<a href="#">9701306020</a> Bolt(62y)	<a href="#">Buy now</a>
18	<a href="#">9290306600</a> Washer, plain (646)	<a href="#">Buy now</a>
19	<a href="#">6J84411600</a> Spring	<a href="#">Buy now</a>
20	<a href="#">9589506012</a> Bolt, flange deep recess	<a href="#">Buy now</a>
21	<a href="#">6J84414300</a> Rod, shift	<a href="#">Buy now</a>
22	<a href="#">9299005600</a> Washer, plain (646)	<a href="#">Buy now</a>
23	<a href="#">9149016010</a> Pin, cotter	<a href="#">Buy now</a>
24	<a href="#">9017006015</a> Connector, shift rod	<a href="#">Buy now</a>
25	<a href="#">6894337301</a> Seal, damper	<a href="#">Buy now</a>
26	<a href="#">6J84219200</a> Rod 2	<a href="#">Buy now</a>
29	<a href="#">6J84215401</a> Lever, throttle control	<a href="#">Buy now</a>
30	<a href="#">9020210024</a> Washer plate 648441880000	<a href="#">Buy now</a>
31	<a href="#">9578008300</a> Nut, nylon (6j8)	<a href="#">Buy now</a>
32	<a href="#">6J84414200</a> Joint	<a href="#">Buy now</a>

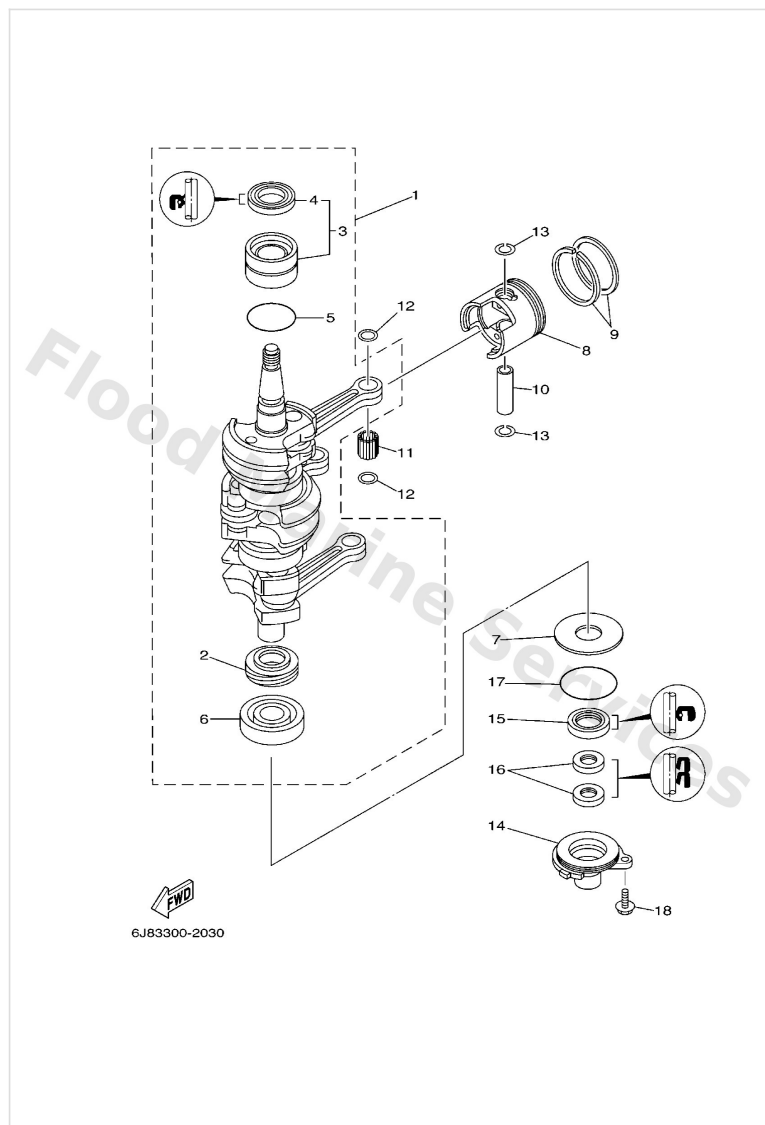
# Control



6J8L300-F160

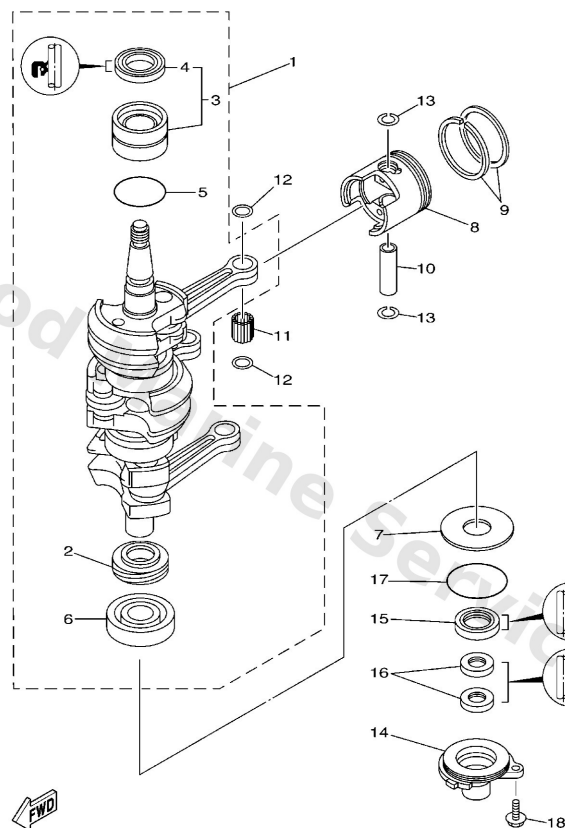
Ref	Part	
34	<a href="#">6824272600</a> Grommet 3	<a href="#">Buy now</a>
35	<a href="#">9020212M17</a> Washer, plate (6e0)	<a href="#">Buy now</a>

# Crankshaft & Piston



Ref	Part	
1	<a href="#">6J81140011</a> Crankshaft assembly	<a href="#">Buy now</a>
2	<a href="#">6J81153600</a> Gear, drive	<a href="#">Buy now</a>
3	<a href="#">93311632U7</a> Bearing, cylindrical(6j8)	<a href="#">Buy now</a>
4	<a href="#">9310226M27</a> Oil seal(6j8)	<a href="#">Buy now</a>
5	<a href="#">9321042159</a> O-ring (647)	<a href="#">Buy now</a>
6	<a href="#">93306305U3</a> Bearing(6j8)	<a href="#">Buy now</a>
7	<a href="#">9020150306</a> Washer plate 648115870000	<a href="#">Buy now</a>
8	<a href="#">6J8116310246</a> Piston (std)	<a href="#">Buy now</a>
8	<a href="#">6J81163502</a> Piston (0.25mm o/s) AP	<a href="#">Buy now</a>
8	<a href="#">6J81163602</a> Piston (0.50mm o/s) AP	<a href="#">Buy now</a>
9	<a href="#">6J81160101</a> Piston ring set (std)	<a href="#">Buy now</a>
9	<a href="#">6J81160111</a> Piston ring set (1st o/s) AP	<a href="#">Buy now</a>
9	<a href="#">6J81160121</a> Piston ring set (2nd o/s) AP	<a href="#">Buy now</a>
10	<a href="#">6J81163300</a> Pin, piston	<a href="#">Buy now</a>
11	<a href="#">9360216M10</a> Pin, dowel(6j8)	<a href="#">Buy now</a>

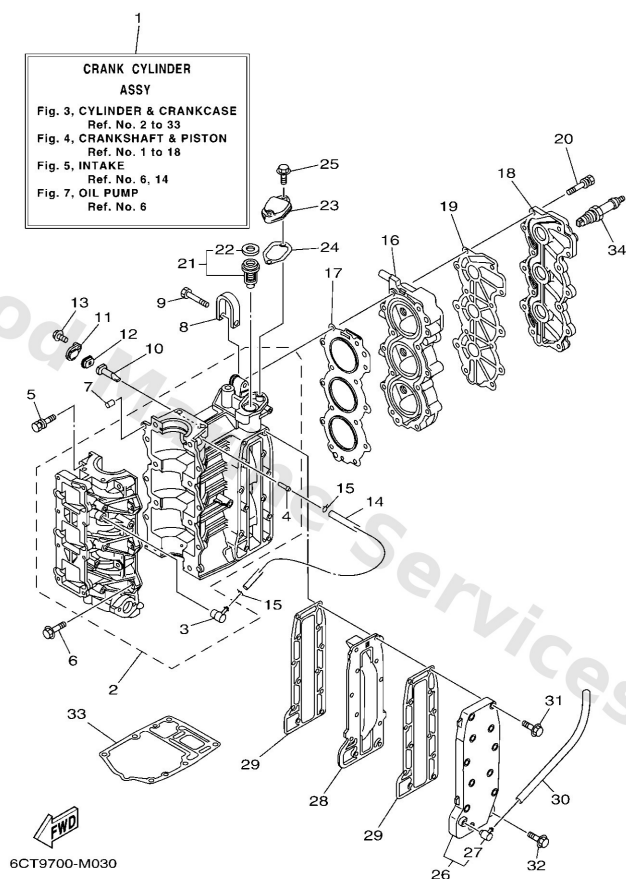
# Crankshaft & Piston



FWD  
6J83300-2030

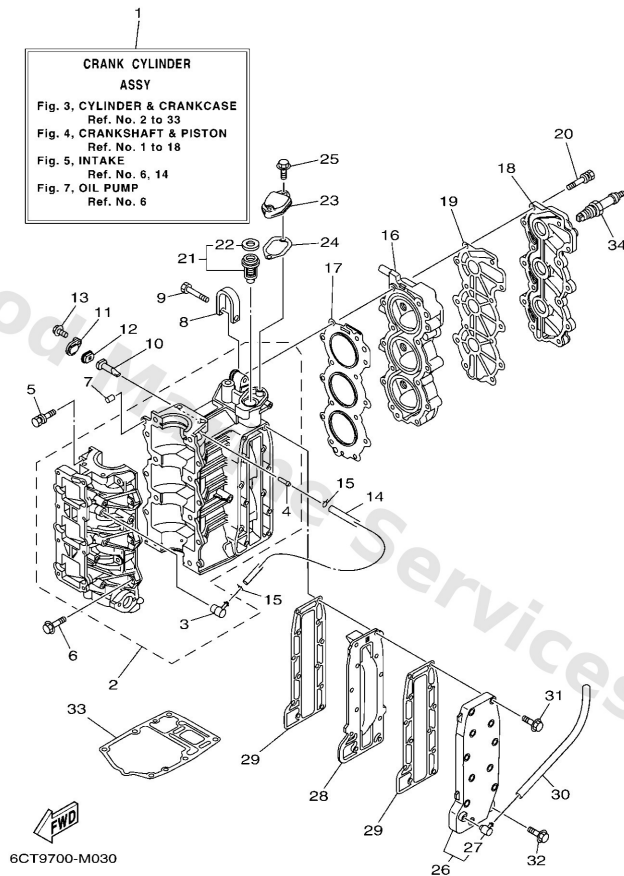
Ref	Part	
12	<a href="#">9020116379</a> Washer plate	<a href="#">Buy now</a>
13	<a href="#">9345017129</a> Circlip(1ar)	<a href="#">Buy now</a>
14	<a href="#">6J81539600CA</a> Housing, oil seal	<a href="#">Buy now</a>
15	<a href="#">9310125M28</a> Oil seal(6j8)	<a href="#">Buy now</a>
16	<a href="#">9310416M04</a> Oil seal(6a8)	<a href="#">Buy now</a>
17	<a href="#">9321056M80</a> O-ring(6j8)	<a href="#">Buy now</a>
18	<a href="#">9011906023</a> Bolt, with washer	<a href="#">Buy now</a>

# Cylinder & Crankcase



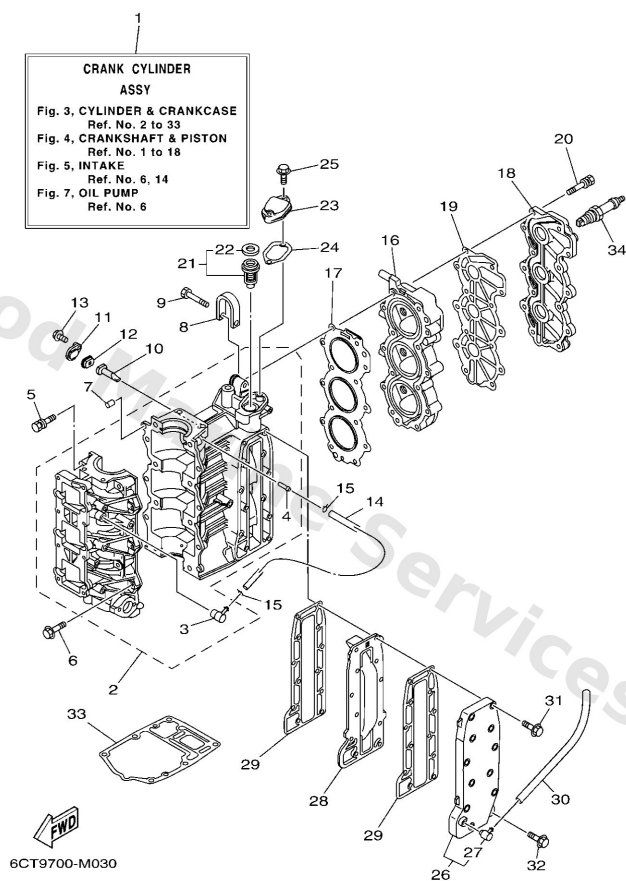
Ref	Part	
1	<a href="#">6J8W0090431S</a> Crank cylinder assembly	<a href="#">Buy now</a>
2	<a href="#">6J81510011</a> Crankcase assembly	<a href="#">Buy now</a>
3	<a href="#">6501137001</a> Check valve assembly	<a href="#">Buy now</a>
4	<a href="#">6241448500</a> Pipe, joint	<a href="#">Buy now</a>
5	<a href="#">9011908019</a> Bolt, with washer	<a href="#">Buy now</a>
6	<a href="#">9011906MA4</a> Bolt, with washer	<a href="#">Buy now</a>
7	<a href="#">9360612019</a> Pin, dowel (614)	<a href="#">Buy now</a>
8	<a href="#">6F51111900</a> Hanger, engine	<a href="#">Buy now</a>
9	<a href="#">9010108001</a> Bolt	<a href="#">Buy now</a>
10	<a href="#">6J81132500</a> Anode	<a href="#">Buy now</a>
11	<a href="#">6H3113270094</a> Cover, anode	<a href="#">Buy now</a>
12	<a href="#">6H31132800</a> Grommet, anode	<a href="#">Buy now</a>
13	<a href="#">9011906023</a> Bolt, with washer	<a href="#">Buy now</a>
14	<a href="#">9044507M29</a> Hose (1200)	<a href="#">Buy now</a>
15	<a href="#">9046706016</a> Clip (655)	<a href="#">Buy now</a>

# Cylinder & Crankcase



Ref	Part	
16	<a href="#">6J811111001S</a> Head, cylinder 1	<a href="#">Buy now</a>
17	<a href="#">6J811181A2</a> Gasket, cylinder head 1	<a href="#">Buy now</a>
18	<a href="#">6J811191001S</a> Cover, cylinder head 1	<a href="#">Buy now</a>
19	<a href="#">6J811193A1</a> Gasket, head cover 1	<a href="#">Buy now</a>
20	<a href="#">9011908MA8</a> Bolt, with washer	<a href="#">Buy now</a>
21	<a href="#">6881241111</a> Thermostat	<a href="#">Buy now</a>
22	<a href="#">6881241200</a> Seal, thermostat	<a href="#">Buy now</a>
23	<a href="#">6H412413001S</a> Cover, thermostat	<a href="#">Buy now</a>
24	<a href="#">6J812414A0</a> Gasket, cover	<a href="#">Buy now</a>
25	<a href="#">9011906MA3</a> Bolt, with washer	<a href="#">Buy now</a>
26	<a href="#">6J841113001S</a> Outer cover, exhaust	<a href="#">Buy now</a>
27	<a href="#">6761137200</a> Nipple, hose	<a href="#">Buy now</a>
28	<a href="#">6J841111001S</a> Inner cover, exhaust	<a href="#">Buy now</a>
29	<a href="#">6J841114A0</a> Gasket, exhaust outer cover	<a href="#">Buy now</a>
30	<a href="#">6J81111J00</a> Pipe 1	<a href="#">Buy now</a>

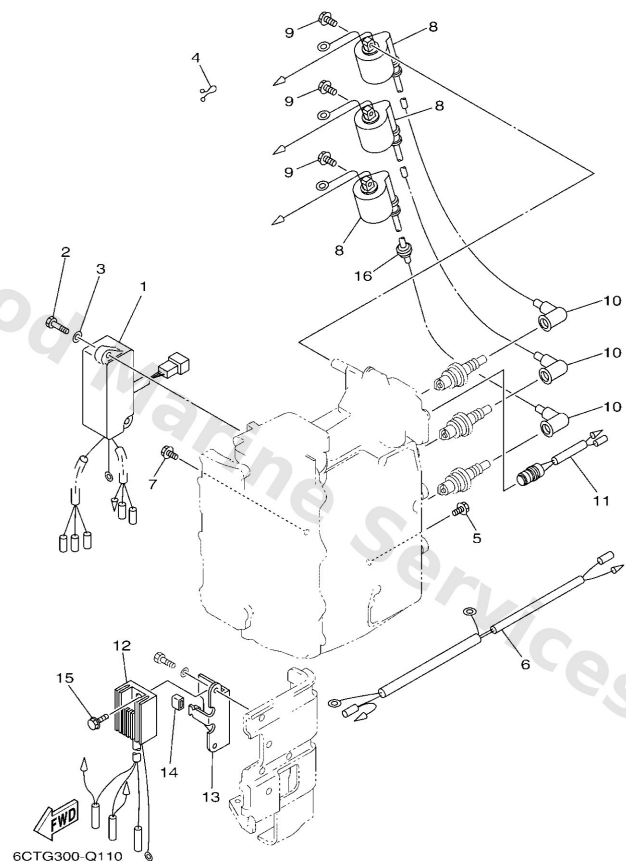
# Cylinder & Crankcase



Ref	Part	
31	<a href="#">9011906MA5</a> Bolt, with washer	<a href="#">Buy now</a>
33	<a href="#">6J845113A0</a> Gasket, upper casing	<a href="#">Buy now</a>
34	<a href="#">9470200271</a> Plug, spark (br7hs-10)	<a href="#">Buy now</a>

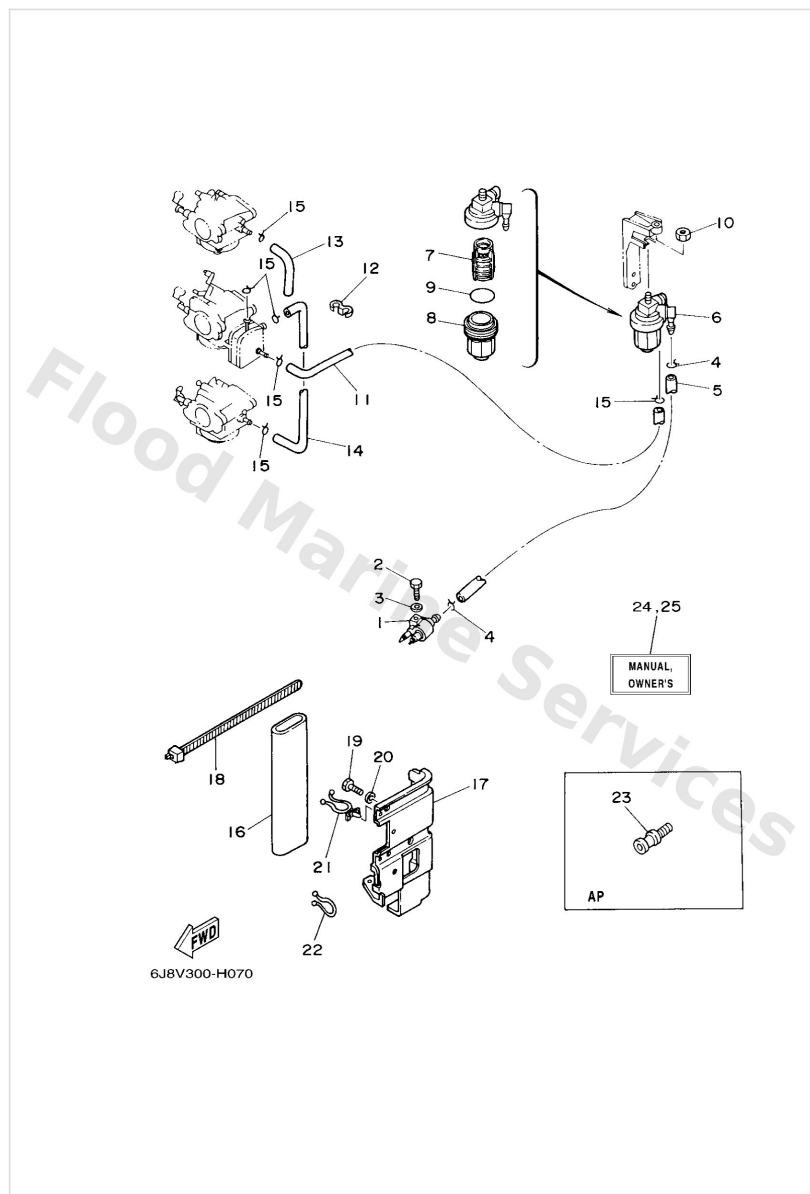


# Electrical



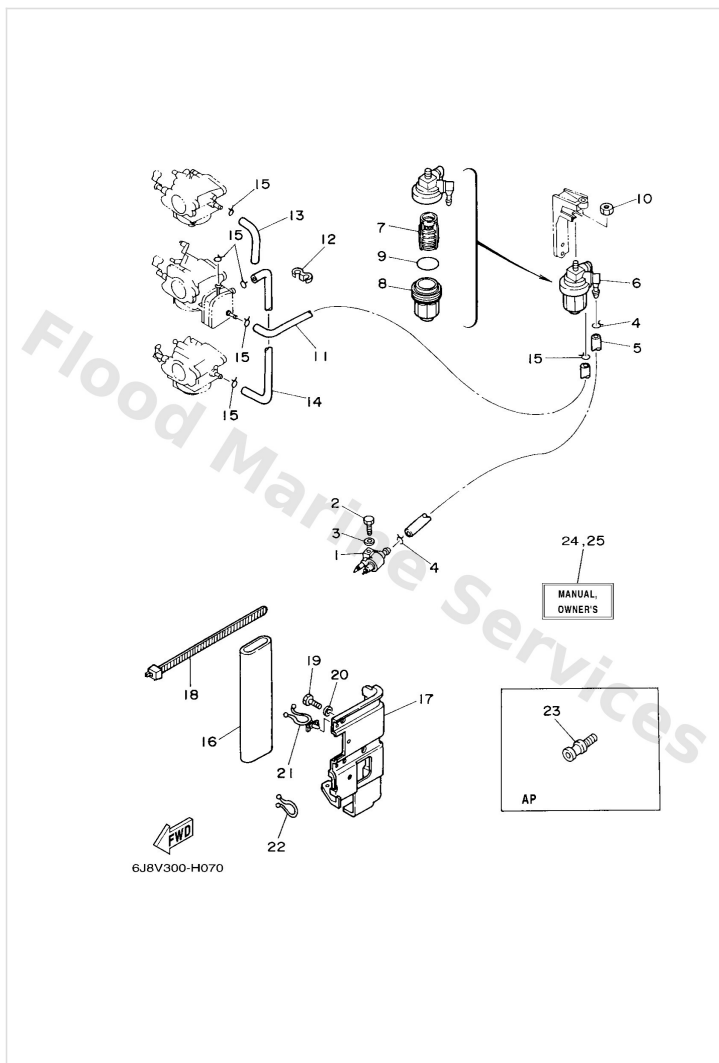
Ref	Part	
1	<a href="#">6J885540H2</a> C.d.i. unit assembly	<a href="#">Buy now</a>
2	<a href="#">9709506025</a> Bolt	<a href="#">Buy now</a>
3	<a href="#">9299506600</a> Washer, plain (646)	<a href="#">Buy now</a>
4	<a href="#">9046415M11</a> Clamp (3y2)	<a href="#">Buy now</a>
5	<a href="#">9759506512</a> Bolt, hexagon w/w deep recess	<a href="#">Buy now</a>
6	<a href="#">6J88253100</a> Wire, lead	<a href="#">Buy now</a>
8	<a href="#">6J88557021</a> Ignition coil assembly	<a href="#">Buy now</a>
9	<a href="#">9759506520</a> Bolt(7u8)	<a href="#">Buy now</a>
10	<a href="#">6G18237021</a> Plug cap assembly	<a href="#">Buy now</a>
11	<a href="#">6898256000</a> Thermo switch assembly	<a href="#">Buy now</a>
12	<a href="#">6J88196000</a> Rectifier & regulator assembly	<a href="#">Buy now</a>
13	<a href="#">6J88197500</a> Plate, rectifier fitting	<a href="#">Buy now</a>
14	<a href="#">6894419400</a> Cap	<a href="#">Buy now</a>
16	<a href="#">9048025161</a> Grommet(656)	<a href="#">Buy now</a>

# Fuel



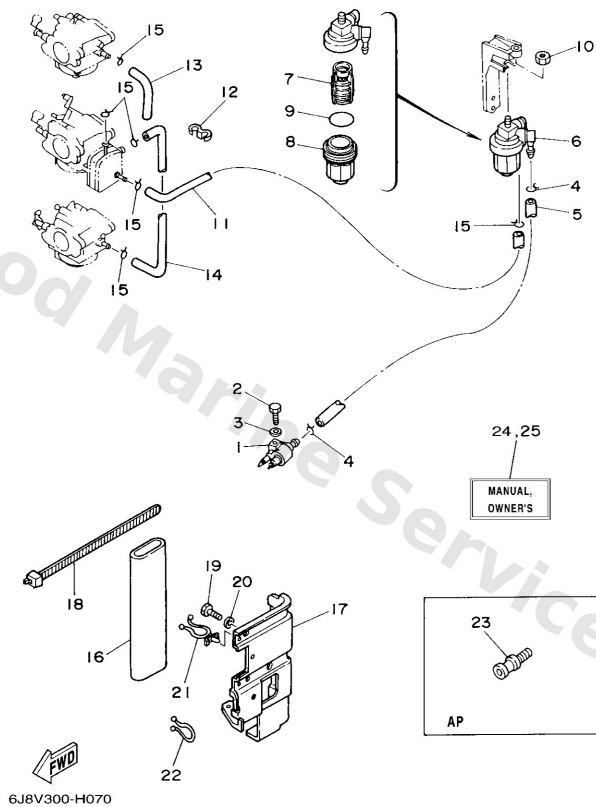
Ref	Part	
1	<a href="#">6G12430410</a> Fuel pipe joint comp. 1	<a href="#">Buy now</a>
2	<a href="#">9709506025</a> Bolt	<a href="#">Buy now</a>
3	<a href="#">9299506600</a> Washer, plain (646)	<a href="#">Buy now</a>
4	<a href="#">9046708004</a> Clip, pipe 6162435600	<a href="#">Buy now</a>
5	<a href="#">9044509M00</a> Hose (1180)	<a href="#">Buy now</a>
6	<a href="#">61N2456000</a> Filter assembly	<a href="#">Buy now</a>
7	<a href="#">61N2456300</a> Element, filter	<a href="#">Buy now</a>
8	<a href="#">61N2452100</a> Cup, filter	<a href="#">Buy now</a>
9	<a href="#">9321032738</a> O-ring(1wg)	<a href="#">Buy now</a>
10	<a href="#">9017908M15</a> Nut(6j8)	<a href="#">Buy now</a>
11	<a href="#">6E52431200</a> Pipe 2	<a href="#">Buy now</a>
12	<a href="#">9046409M21</a> Clamp(6j8)	<a href="#">Buy now</a>
13	<a href="#">6882431300</a> Pipe, fuel 2	<a href="#">Buy now</a>
14	<a href="#">6J82431100</a> Pipe, fuel 2	<a href="#">Buy now</a>
16	<a href="#">656W281002</a> Tool kit AP	<a href="#">Buy now</a>

# Fuel



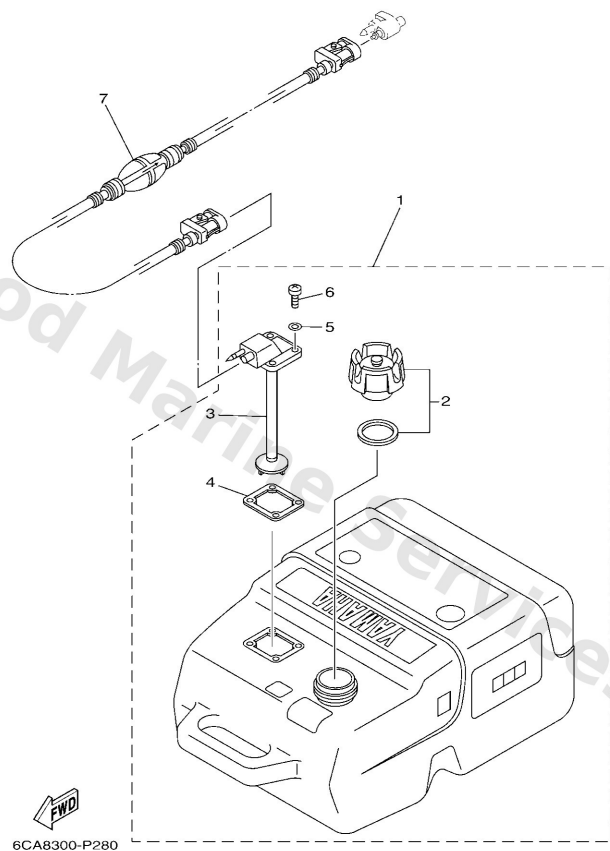
Ref	Part	
17	<a href="#">6J82817000</a> Tool, holder	<a href="#">Buy now</a>
18	<a href="#">6G12811G00</a> Band AP	<a href="#">Buy now</a>
19	<a href="#">9709508016</a> Bolt, hexagon deep recess	<a href="#">Buy now</a>
20	<a href="#">9299508600</a> Washer, plain (663)	<a href="#">Buy now</a>
21	<a href="#">9046412M17</a> Clamp(6j8)	<a href="#">Buy now</a>
22	<a href="#">9046518147</a> Clamp	<a href="#">Buy now</a>
23	<a href="#">6E02819300</a> Plug, water check AP D)12.5MM	<a href="#">Buy now</a>
24	<a href="#">6J82819978E0</a> Manual,Owner's UR (E)	<a href="#">Buy now</a>
24	<a href="#">6J82819978F0</a> Manual,Owner's UR (F)	<a href="#">Buy now</a>
24	<a href="#">6J82819978G0</a> Manual,Owner's UR (D)	<a href="#">Buy now</a>
24	<a href="#">6J82819978S0</a> Manual,Owner's UR (ES)	<a href="#">Buy now</a>
24	<a href="#">6J82819978D0</a> Manual,Owner's UR (NL)	<a href="#">Buy now</a>
24	<a href="#">6J82819978H0</a> Manual,Owner's UR (I)	<a href="#">Buy now</a>
25	<a href="#">6J8281998KK0</a> Manual,Owner's UR (DK)	<a href="#">Buy now</a>
25	<a href="#">6J8281998KL0</a> Manual,Owner's UR (SF)	<a href="#">Buy now</a>

# Fuel



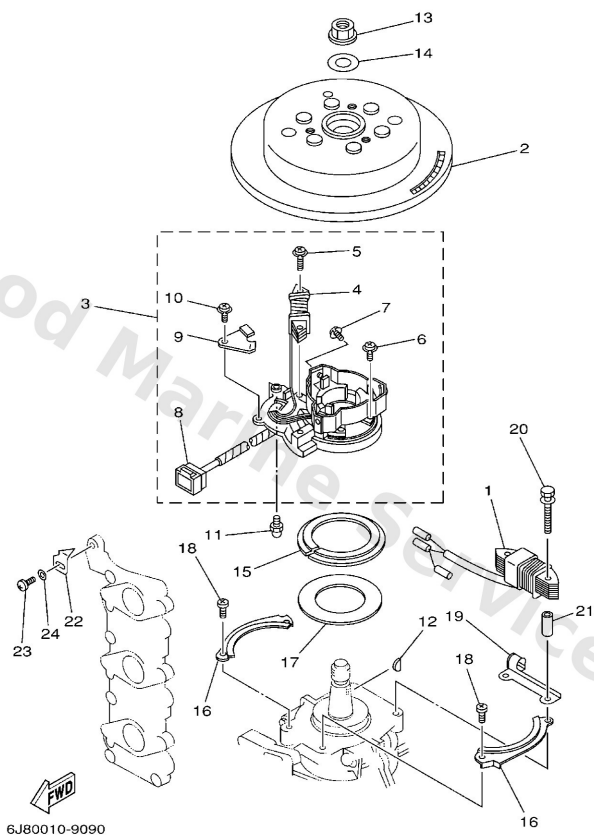
Ref	Part	
25	<a href="#">6J8281998KM0</a> Manual, Owner's UR (S)	<a href="#">Buy now</a>
25	<a href="#">6J8281998KN0</a> Manual, Owner's UR (N)	<a href="#">Buy now</a>
25	<a href="#">6J8281998KP0</a> Manual, Owner's UR (P)	<a href="#">Buy now</a>
25	<a href="#">6J8281998KR0</a> Manual, Owner's UR (GR)	<a href="#">Buy now</a>

# Fuel Tank



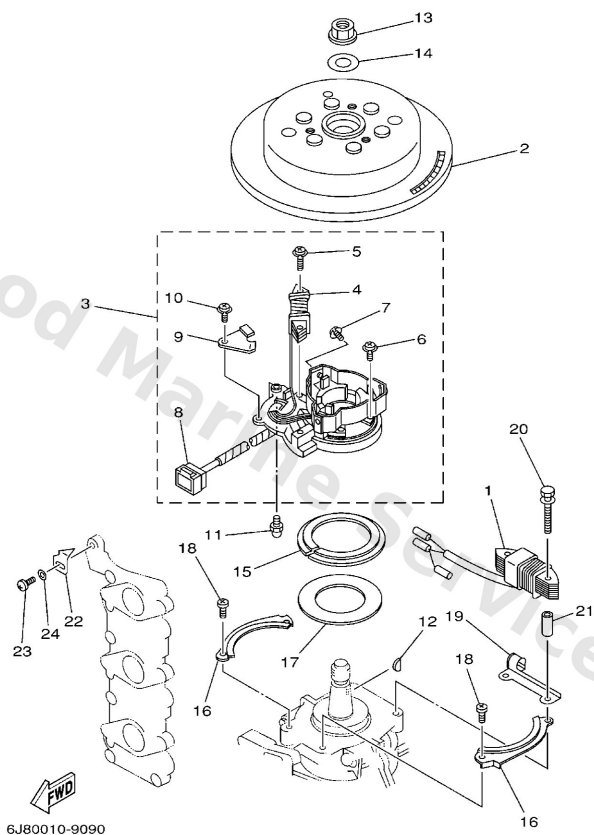
Ref	Part	
1	<a href="#">6YK2420104</a> Fuel tank comp. AP	<a href="#">Buy now</a>
2	<a href="#">6YK2461001</a> Cap assembly	<a href="#">Buy now</a>
3	<a href="#">6YK2426010</a> Fuel meter assembly	<a href="#">Buy now</a>
4	<a href="#">6YL2426801</a> Gasket, fuel meter	<a href="#">Buy now</a>
5	<a href="#">6YL2432900</a> Seal	<a href="#">Buy now</a>
6	<a href="#">9015705M16</a> Screw, pan head	<a href="#">Buy now</a>
7	<a href="#">6YL2430654</a> Fuel pipe comp. 1 AP	<a href="#">Buy now</a>

# Generator



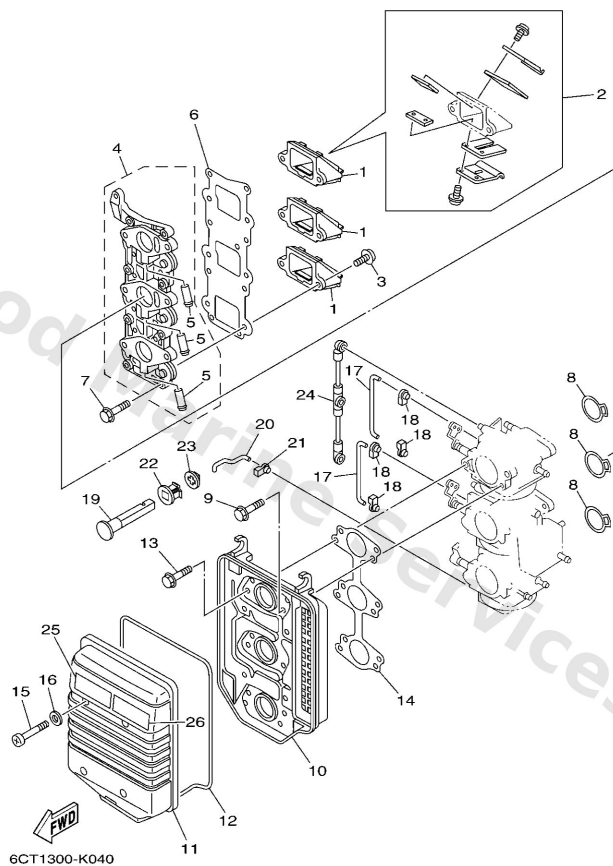
Ref	Part	
1	<a href="#">6H485533A1</a> Coil, lighting	<a href="#">Buy now</a>
2	<a href="#">6J885550F1</a> Rotor assembly	<a href="#">Buy now</a>
3	<a href="#">6H485510F1</a> Stator assembly	<a href="#">Buy now</a>
4	<a href="#">6H48552001</a> Coil, charge	<a href="#">Buy now</a>
5	<a href="#">9790206120</a> Screw, with washer	<a href="#">Buy now</a>
6	<a href="#">9790204112</a> Screw, with washer	<a href="#">Buy now</a>
7	<a href="#">9790204106</a> Screw, with washer	<a href="#">Buy now</a>
8	<a href="#">9E47109205</a> Housing, m-9-b 5pcs(61a)	<a href="#">Buy now</a>
9	<a href="#">6H48554800</a> Clamp, cord	<a href="#">Buy now</a>
10	<a href="#">9790205408</a> Screw, with washer	<a href="#">Buy now</a>
11	<a href="#">6638551800</a> Joint, ball	<a href="#">Buy now</a>
12	<a href="#">9028005013</a> Key, woodruff	<a href="#">Buy now</a>
13	<a href="#">9017916M05</a> Nut (689)	<a href="#">Buy now</a>
14	<a href="#">9020116M44</a> Washer (689)	<a href="#">Buy now</a>
15	<a href="#">6H44161110</a> Retainer, magneto base	<a href="#">Buy now</a>

# Generator



Ref	Part	
16	<a href="#">6J84161500</a> Stopper, magneto base	<a href="#">Buy now</a>
17	<a href="#">6J84161800</a> Washer, magneto	<a href="#">Buy now</a>
18	<a href="#">9788006012</a> Screw, pan head(62j)	<a href="#">Buy now</a>
19	<a href="#">6J88554800</a> Holder	<a href="#">Buy now</a>
20	<a href="#">9010106M00</a> Bolt(682)	<a href="#">Buy now</a>
21	<a href="#">9038706M81</a> Collar	<a href="#">Buy now</a>
22	<a href="#">6J88133200</a> Plate, timing	<a href="#">Buy now</a>
23	<a href="#">9788505010</a> Screw, pan head(62x)	<a href="#">Buy now</a>
24	<a href="#">9299505600</a> Washer, plain (646)	<a href="#">Buy now</a>

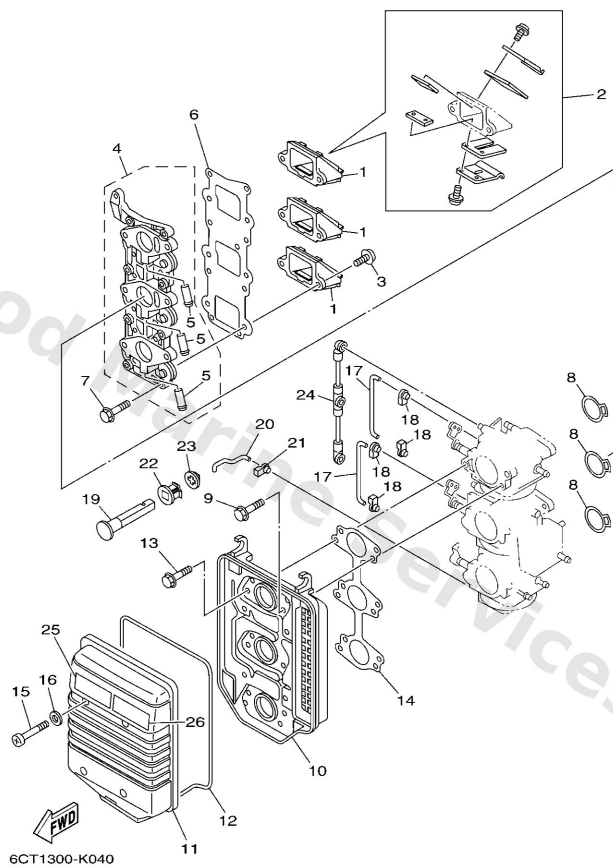
# Intake



Ref	Part	
1	<a href="#">6J81361000</a> Reed Valve assembly	<a href="#">Buy now</a>
2	<a href="#">6J8W000400</a> Reed set	<a href="#">Buy now</a>
3	<a href="#">9798005216</a> Screw, pan w/ plain	<a href="#">Buy now</a>
4	<a href="#">6J81364110</a> Manifold 1	<a href="#">Buy now</a>
5	<a href="#">6761448500</a> Pipe, joint	<a href="#">Buy now</a>
6	<a href="#">6J81362100</a> Gasket, valve seat	<a href="#">Buy now</a>
7	<a href="#">9011906MA3</a> Bolt, with washer	<a href="#">Buy now</a>
8	<a href="#">6J81419800</a> Gasket	<a href="#">Buy now</a>
9	<a href="#">9011906M32</a> Bolt, with washer(6j8)	<a href="#">Buy now</a>
10	<a href="#">6J81441700</a> Cover 1	<a href="#">Buy now</a>
11	<a href="#">6J81441800</a> Cover 2	<a href="#">Buy now</a>
12	<a href="#">6J81447600</a> Seal	<a href="#">Buy now</a>
13	<a href="#">9011905M31</a> Bolt, with washer(6j8)	<a href="#">Buy now</a>
14	<a href="#">6J814483A1</a> Gasket	<a href="#">Buy now</a>
15	<a href="#">9788005040</a> Screw,panhead (eg9)	<a href="#">Buy now</a>

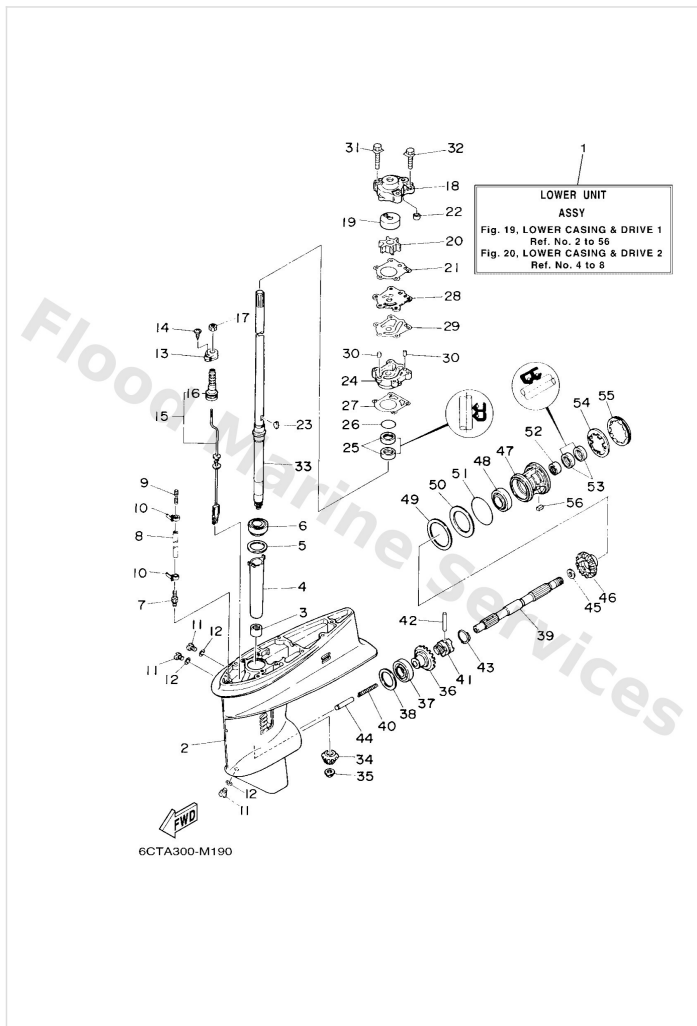


# Intake



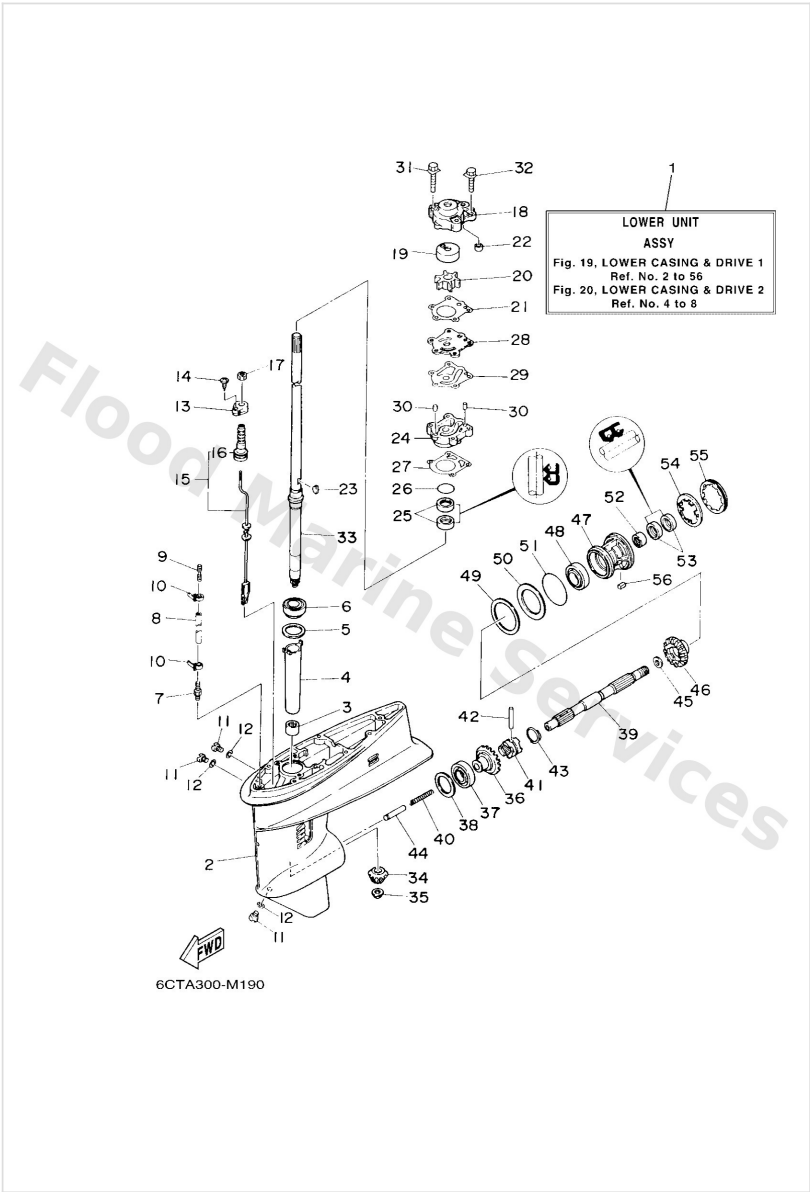
Ref	Part	
16	<a href="#">9299005600</a> Washer, plain (646)	<a href="#">Buy now</a>
17	<a href="#">6J84125900</a> Rod, choke 3	<a href="#">Buy now</a>
18	<a href="#">6614126202</a> Joint, choke lever	<a href="#">Buy now</a>
19	<a href="#">6J84127101</a> Knob, choke	<a href="#">Buy now</a>
20	<a href="#">6J84125700</a> Rod, choke 2	<a href="#">Buy now</a>
21	<a href="#">6J84126200</a> Joint, choke lever	<a href="#">Buy now</a>
22	<a href="#">6894127300</a> Grommet	<a href="#">Buy now</a>
23	<a href="#">6J84127400</a> Grommet 2	<a href="#">Buy now</a>
24	<a href="#">6J84121700</a> Rod, accel. lever	<a href="#">Buy now</a>
25	<a href="#">6EE8199440</a> Label, safety	<a href="#">Buy now</a>
26	<a href="#">6EE8199450</a> Label, safety	<a href="#">Buy now</a>

# Lower Casing & Drive 1



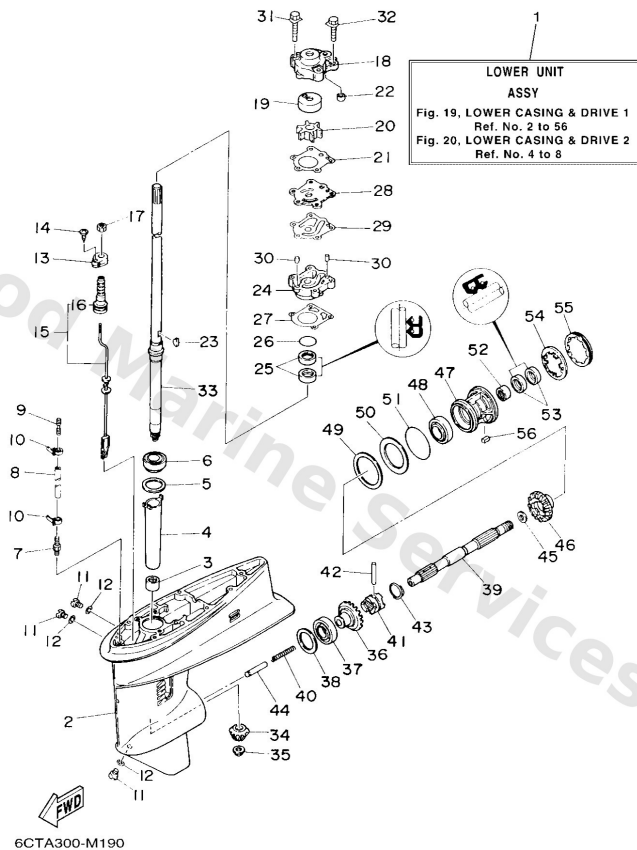
Ref	Part	
1	<a href="#">6J845300148D</a> Lower unit assembly L(21.5")	<a href="#">Buy now</a>
2	<a href="#">6J845301028D</a> Casing, lower	<a href="#">Buy now</a>
3	<a href="#">93315220V7</a> Bearing, cylindrical(6j8)	<a href="#">Buy now</a>
4	<a href="#">6J84553600</a> Sleeve, drive shaft	<a href="#">Buy now</a>
5	<a href="#">6634558701</a> Shim (t:0.10mm) UR	<a href="#">Buy now</a>
5	<a href="#">6634558710</a> Shim (t:0.12mm) UR	<a href="#">Buy now</a>
5	<a href="#">6634558720</a> Shim (t:0.15mm) UR	<a href="#">Buy now</a>
5	<a href="#">6634558730</a> Shim (t:0.18mm) UR	<a href="#">Buy now</a>
5	<a href="#">6634558740</a> Shim (t:0.30mm) UR	<a href="#">Buy now</a>
5	<a href="#">6634558750</a> Shim (t:0.40mm) UR	<a href="#">Buy now</a>
5	<a href="#">6634558760</a> Shim (t:0.50mm) UR	<a href="#">Buy now</a>
6	<a href="#">9333200001</a> Brg, tapered roller (409)	<a href="#">Buy now</a>
7	<a href="#">6E54537800</a> Nipple, hose	<a href="#">Buy now</a>
8	<a href="#">9044507M31</a> Hose (I200) L(21.5")	<a href="#">Buy now</a>
9	<a href="#">6E58355800</a> End, nipple	<a href="#">Buy now</a>

Lower Casing & Drive 1



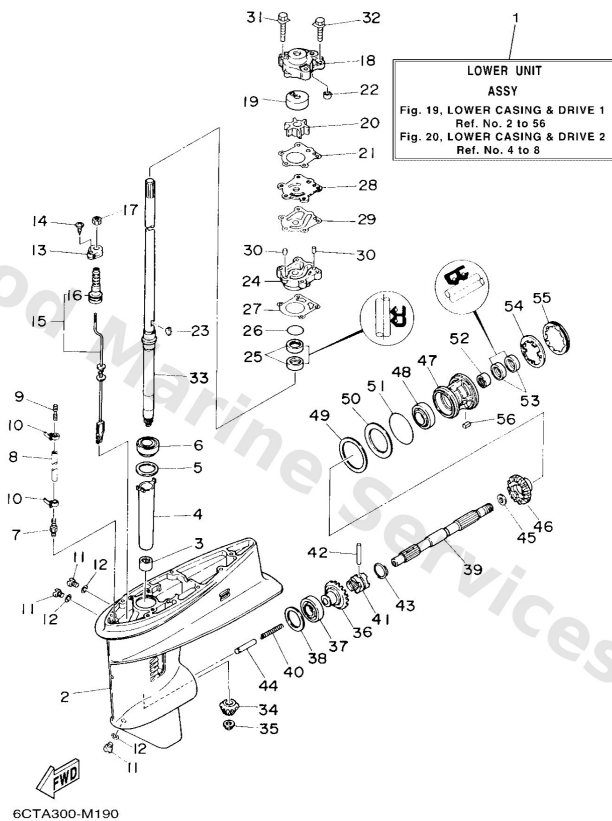
Ref	Part	
10	<a href="#">9046511M10</a> Clamp	<a href="#">Buy now</a>
11	<a href="#">9034008002</a> Plug, straight screw	<a href="#">Buy now</a>
12	<a href="#">9043008003</a> Gasket	<a href="#">Buy now</a>
13	<a href="#">6824417600</a> Bracket	<a href="#">Buy now</a>
14	<a href="#">9778050110</a> Screw, tapping(6u1)	<a href="#">Buy now</a>
15	<a href="#">6J84415010</a> Shift cam assembly L(21.5")	<a href="#">Buy now</a>
16	<a href="#">6824414700</a> Boot, shift rod	<a href="#">Buy now</a>
17	<a href="#">9538006700</a> Nut	<a href="#">Buy now</a>
18	<a href="#">6J84431100</a> Housing, water pump	<a href="#">Buy now</a>
19	<a href="#">6634432200</a> Insert, cartridge	<a href="#">Buy now</a>
20	<a href="#">6H44435202</a> Impeller	<a href="#">Buy now</a>
21	<a href="#">66344315A0</a> Gasket,water pump 1	<a href="#">Buy now</a>
22	<a href="#">6634436600</a> Damper, water seal 2	<a href="#">Buy now</a>
23	<a href="#">9028003024</a> Key, woodruff(662)	<a href="#">Buy now</a>
24	<a href="#">6634434100</a> Housing, water pump	<a href="#">Buy now</a>

# Lower Casing & Drive 1



Ref	Part	
25	<a href="#">9310123070</a> Oil seal (663)	<a href="#">Buy now</a>
26	<a href="#">9321041042</a> O-ring (132)	<a href="#">Buy now</a>
27	<a href="#">66344316A0</a> Gasket,water pump 2	<a href="#">Buy now</a>
28	<a href="#">6634432300</a> Outer plate, cartridge	<a href="#">Buy now</a>
29	<a href="#">66344324A0</a> Gasket,cartridge outer plate	<a href="#">Buy now</a>
30	<a href="#">9360408062</a> Pin,dowel (626)	<a href="#">Buy now</a>
31	<a href="#">9011908M13</a> Bolt, with washer(6h0)	<a href="#">Buy now</a>
32	<a href="#">9011908M34</a> Bolt, with washer(6j8)	<a href="#">Buy now</a>
33	<a href="#">6J84550110</a> Drive shaft comp. L(21.5")	<a href="#">Buy now</a>
34	<a href="#">6J84555100</a> Pinion	<a href="#">Buy now</a>
35	<a href="#">9017910M14</a> Nut(6j8)	<a href="#">Buy now</a>
36	<a href="#">6J84556000</a> Gear	<a href="#">Buy now</a>
37	<a href="#">93332000V6</a> Bearing(6j8)	<a href="#">Buy now</a>
38	<a href="#">6J84556701</a> Shim (t:0.10mm) UR	<a href="#">Buy now</a>
38	<a href="#">6J84556710</a> Shim (t:0.12mm) UR	<a href="#">Buy now</a>

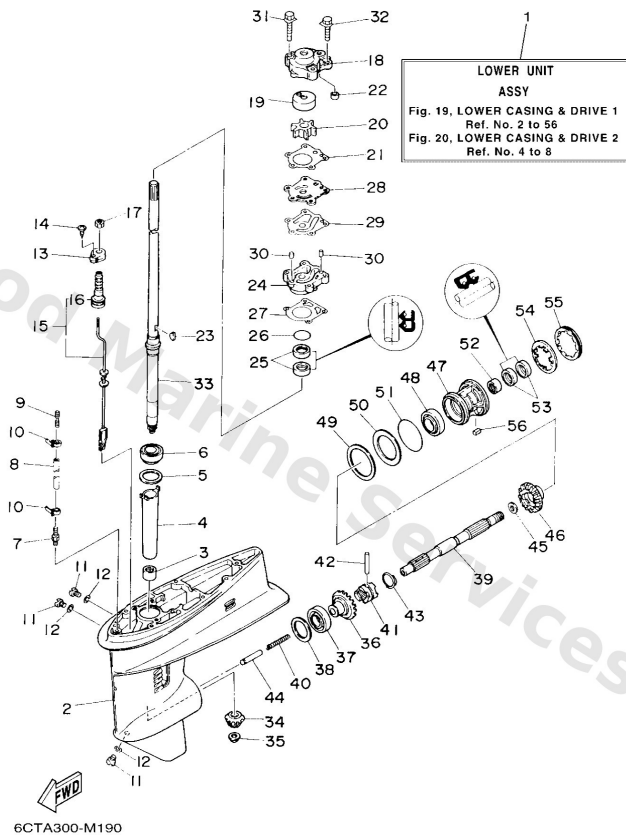
## Lower Casing & Drive 1



6CTA300-M190

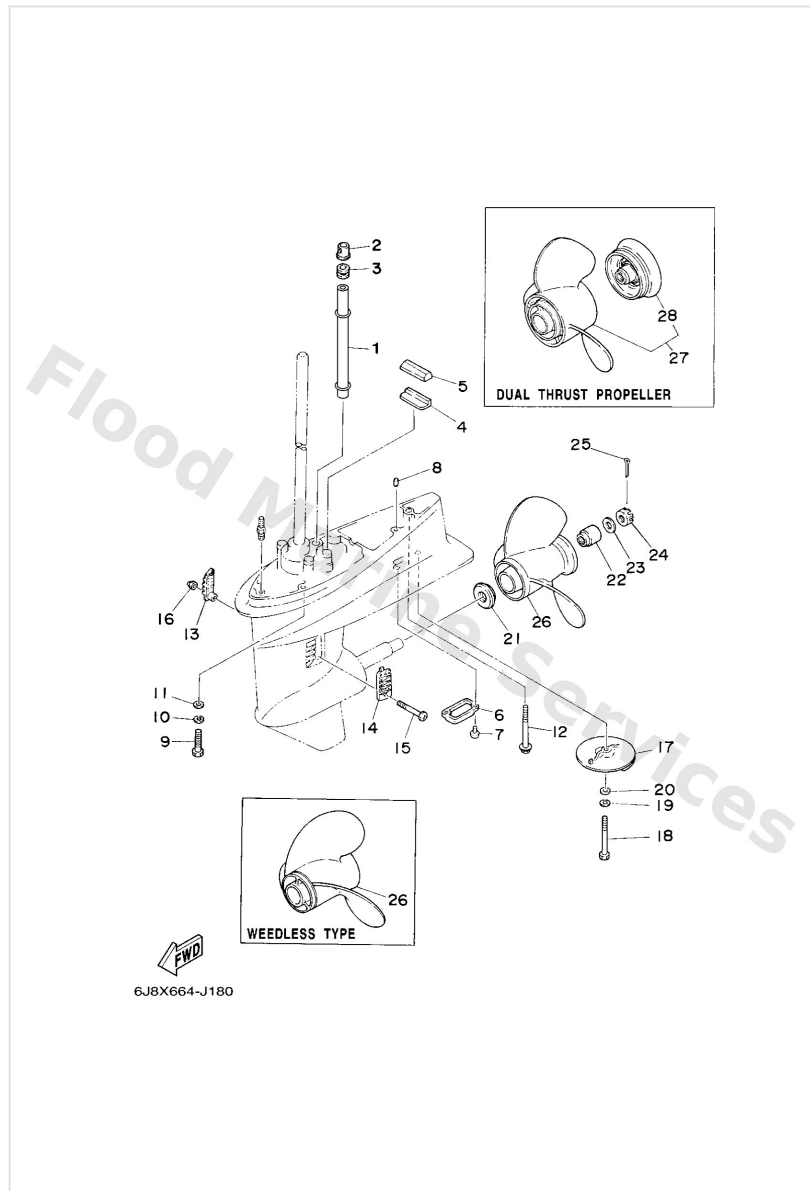
Ref	Part	
38	<a href="#">6J84556720</a> Shim, thrust (0.15t) UR	<a href="#">Buy now</a>
38	<a href="#">6J84556730</a> Shim (t:0.18mm) UR	<a href="#">Buy now</a>
38	<a href="#">6J84556740</a> Shim, thrust (0.3t) UR	<a href="#">Buy now</a>
38	<a href="#">6J84556750</a> Shim, thrust (0.4t) UR	<a href="#">Buy now</a>
38	<a href="#">6J84556760</a> Shim, thrust (0.5t) UR	<a href="#">Buy now</a>
39	<a href="#">6J84561100</a> Shaft, propeller	<a href="#">Buy now</a>
40	<a href="#">9050110065</a> Spring compression648456360000	<a href="#">Buy now</a>
41	<a href="#">6J84563101</a> Clutch, dog	<a href="#">Buy now</a>
42	<a href="#">9025005010</a> Pin straight 648456320000	<a href="#">Buy now</a>
43	<a href="#">6484563300</a> Ring, cross pin	<a href="#">Buy now</a>
44	<a href="#">6J84563500</a> Plunger, shift	<a href="#">Buy now</a>
45	<a href="#">9020120417</a> Washer, plate(663)	<a href="#">Buy now</a>
46	<a href="#">6J84557100</a> Gear	<a href="#">Buy now</a>
47	<a href="#">6894533101</a> Housing, bearing	<a href="#">Buy now</a>
48	<a href="#">9330600612</a> Bearing(2hr)	<a href="#">Buy now</a>

## Lower Casing & Drive 1



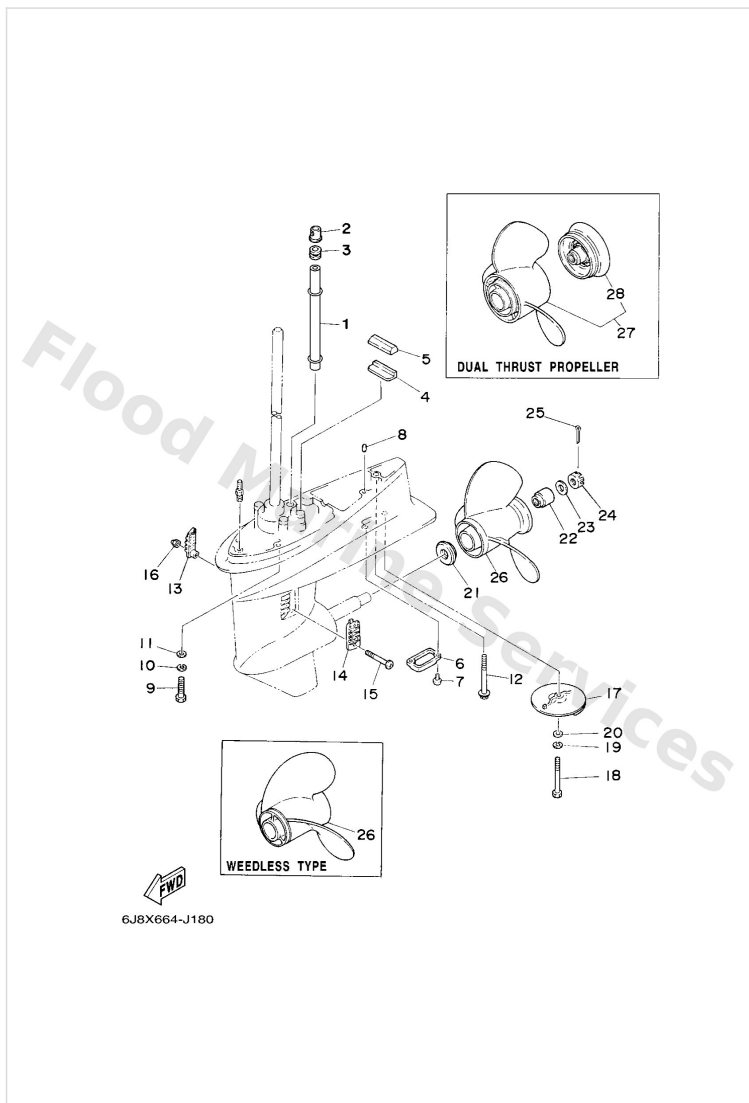
Ref	Part	
49	<a href="#">6644557701</a> Shim (t:0.10mm) UR	<a href="#">Buy now</a>
49	<a href="#">6644557710</a> Shim (t:0.12mm) UR	<a href="#">Buy now</a>
49	<a href="#">6644557720</a> Shim (t:0.15mm) UR	<a href="#">Buy now</a>
49	<a href="#">6644557730</a> Shim (t:0.18mm) UR	<a href="#">Buy now</a>
49	<a href="#">6644557740</a> Shim (t:0.30mm) UR	<a href="#">Buy now</a>
49	<a href="#">6644557750</a> Shim (t:0.40mm) UR	<a href="#">Buy now</a>
49	<a href="#">6644557760</a> Shim (t:0.50mm) UR	<a href="#">Buy now</a>
50	<a href="#">6644557600</a> Washer, thrust 2	<a href="#">Buy now</a>
51	<a href="#">9321060MA3</a> O-ring(6j8)	<a href="#">Buy now</a>
52	<a href="#">9331522004</a> Brg,cyl-cal roller 21g nt	<a href="#">Buy now</a>
53	<a href="#">9310120M07</a> Oil seal	<a href="#">Buy now</a>
54	<a href="#">9021445M02</a> Washer, claw(6a9)	<a href="#">Buy now</a>
55	<a href="#">6644538402</a> Nut	<a href="#">Buy now</a>
56	<a href="#">9028204010</a> Key, strait(663)	<a href="#">Buy now</a>

## Lower Casing & Drive 2



Ref	Part	
1	<a href="#">6J84436110</a> Tube, water L(21.5")	<a href="#">Buy now</a>
2	<a href="#">6J84436600</a> Damper, water seal	<a href="#">Buy now</a>
3	<a href="#">6634436700</a> Damper, water seal 3	<a href="#">Buy now</a>
4	<a href="#">6634537600</a> Guide, seal damper	<a href="#">Buy now</a>
5	<a href="#">6884537500</a> Damper, seal 2	<a href="#">Buy now</a>
6	<a href="#">6J84522410</a> Cover, water inlet 3	<a href="#">Buy now</a>
7	<a href="#">9788006012</a> Screw, pan head(62j)	<a href="#">Buy now</a>
8	<a href="#">9360612019</a> Pin, dowel (614)	<a href="#">Buy now</a>
9	<a href="#">9707510040</a> Bolt, hexagon deep recess	<a href="#">Buy now</a>
10	<a href="#">9299510100</a> Ybs67-10 washer, spring	<a href="#">Buy now</a>
11	<a href="#">9299510600</a> Washer, plate	<a href="#">Buy now</a>
12	<a href="#">9757508685</a> Bolt, with washer	<a href="#">Buy now</a>
13	<a href="#">6894521401</a> Cover, water inlet 1	<a href="#">Buy now</a>
14	<a href="#">6J84521500</a> Cover, water inlet	<a href="#">Buy now</a>
15	<a href="#">9015205011</a> Screw, countersunk	<a href="#">Buy now</a>

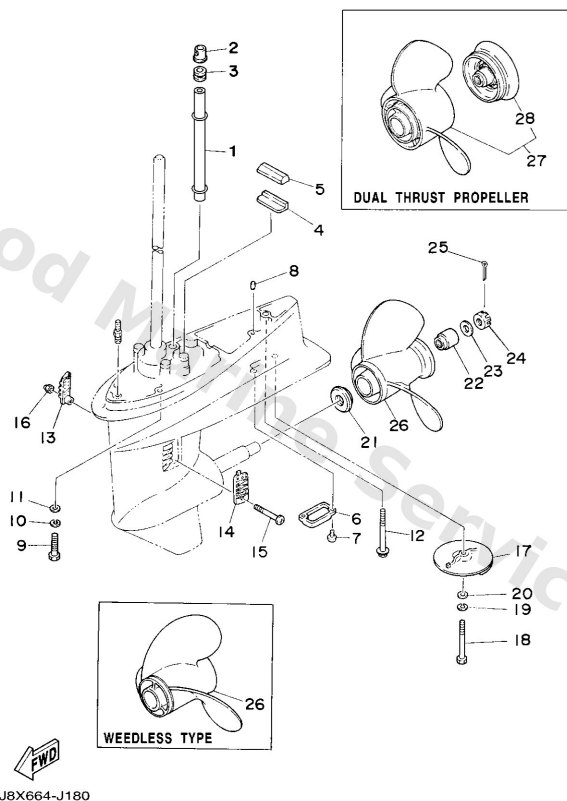
## Lower Casing & Drive 2



Ref	Part	
16	<a href="#">9018505002</a> Nut nylon (sus)(ex4)	<a href="#">Buy now</a>
17	<a href="#">6644537101</a> Tab-trim	<a href="#">Buy now</a>
18	<a href="#">9707508020</a> Bolt, hexagon	<a href="#">Buy now</a>
19	<a href="#">9299508100</a> Ybs67-8 washer, spring	<a href="#">Buy now</a>
20	<a href="#">9299508600</a> Washer, plain (663)	<a href="#">Buy now</a>
21	<a href="#">6L24598701</a> Spacer	<a href="#">Buy now</a>
22	<a href="#">6894599700</a> Spacer	<a href="#">Buy now</a>
23	<a href="#">9299014200</a> Washer, plain	<a href="#">Buy now</a>
24	<a href="#">9017114013</a> Nut(664)	<a href="#">Buy now</a>
25	<a href="#">9149030022</a> Pin, cotter	<a href="#">Buy now</a>
26	<a href="#">6644594101</a> Propeller (3x9-7/8"x9"-f) UR	<a href="#">Buy now</a>
26	<a href="#">6644594301</a> Propeller (3x9-7/8 x8 -f) UR	<a href="#">Buy now</a>
26	<a href="#">6644594500</a> Propeller (3x9-7/8 x10-1/2 -f) UR	<a href="#">Buy now</a>
26	<a href="#">6644594701</a> Propeller (3x9-7/8 x11-1/4 -f) UR	<a href="#">Buy now</a>
26	<a href="#">6644594902</a> Propeller (3x9-7/8 x13 -f) UR	<a href="#">Buy now</a>

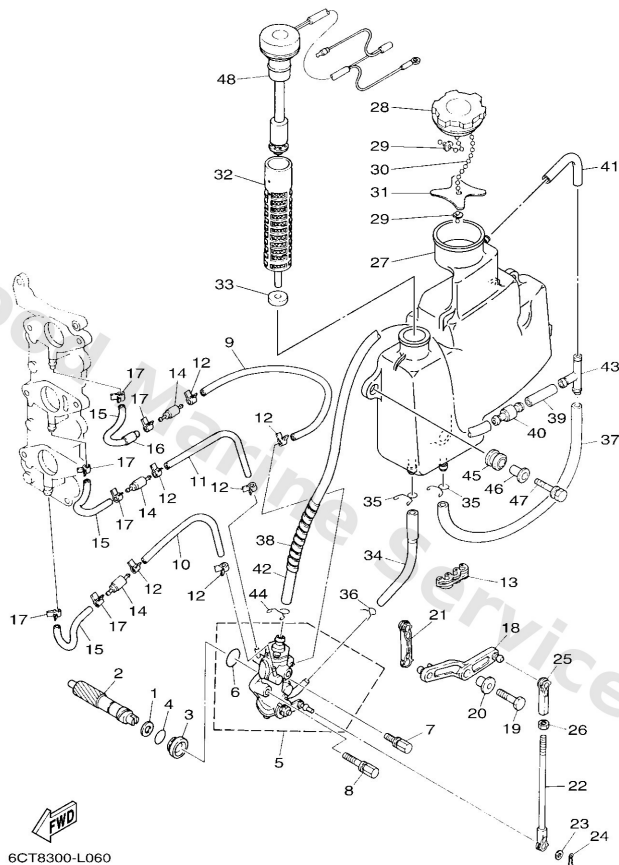


## Lower Casing & Drive 2



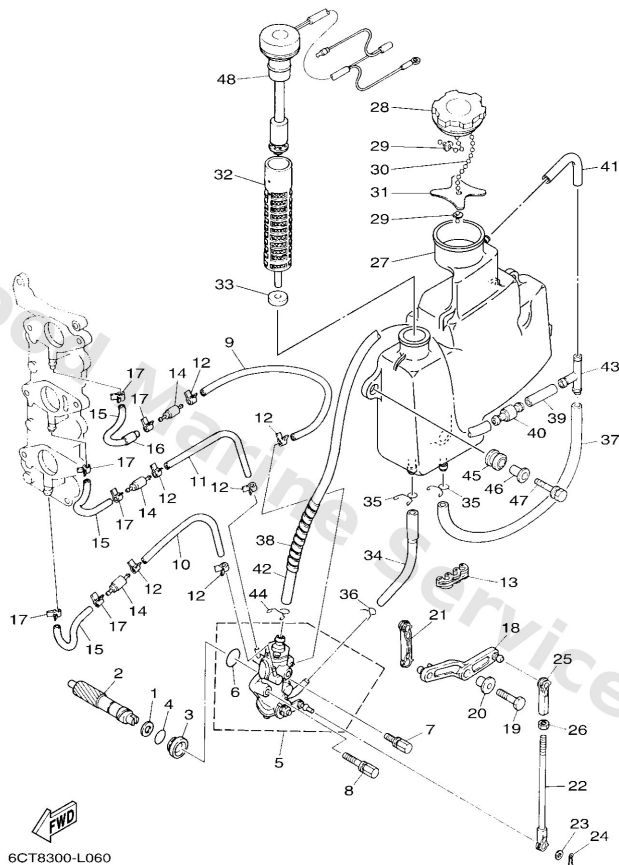
Ref	Part	
26	<a href="#">6644595200</a> Propeller (3x9-7/8 x14 -f) UR	<a href="#">Buy now</a>
26	<a href="#">6644595401</a> Propeller (3x9-7/8 x12 -f) UR	<a href="#">Buy now</a>
26	<a href="#">6644597000</a> Propeller (3x9-1/8 x13 -f) UR WEEDLESS	<a href="#">Buy now</a>
27	<a href="#">6J8W459100</a> Propeller (3x10-5/8"x8-1/4"-f)	<a href="#">Buy now</a>
28	<a href="#">6J84598610</a> Ring, deflector	<a href="#">Buy now</a>

# Oil Pump



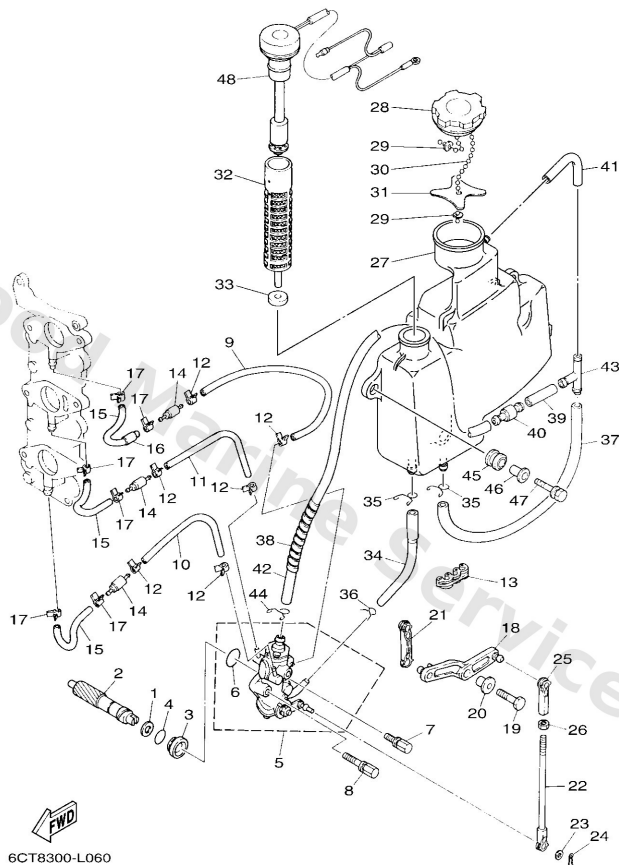
Ref	Part	
1	<a href="#">9020108M93</a> Washer, plate (6g5)	<a href="#">Buy now</a>
2	<a href="#">6J81153700</a> Gear, driven	<a href="#">Buy now</a>
3	<a href="#">6J81311700</a> Collar, distance	<a href="#">Buy now</a>
4	<a href="#">9321013M04</a> 93210-13m04	<a href="#">Buy now</a>
5	<a href="#">6J81320001</a> Oil injection pump assembly	<a href="#">Buy now</a>
6	<a href="#">9321019MA7</a> O-ring(6r0)	<a href="#">Buy now</a>
7	<a href="#">9010905M32</a> Bolt	<a href="#">Buy now</a>
8	<a href="#">9010905M33</a> Bolt	<a href="#">Buy now</a>
9	<a href="#">9044507M08</a> Hose (I390)	<a href="#">Buy now</a>
10	<a href="#">9044507M32</a> Hose (I200)	<a href="#">Buy now</a>
12	<a href="#">9046807M02</a> Clip (6e5)	<a href="#">Buy now</a>
13	<a href="#">9046407M05</a> Clamp (6g5)	<a href="#">Buy now</a>
14	<a href="#">6E91318370</a> Valve check	<a href="#">Buy now</a>
15	<a href="#">9044507M04</a> Hose(62t)	<a href="#">Buy now</a>
16	<a href="#">9044511M08</a> Hose (I70)	<a href="#">Buy now</a>

# Oil Pump



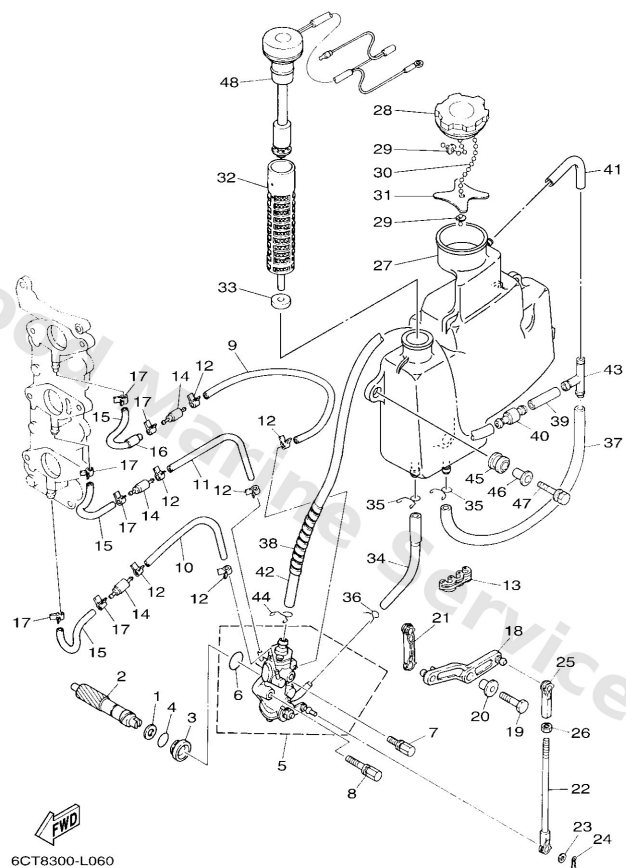
Ref	Part	
18	<a href="#">6J81315500</a> Lever, control	<a href="#">Buy now</a>
19	<a href="#">9709506025</a> Bolt	<a href="#">Buy now</a>
20	<a href="#">9038706289</a> Collar	<a href="#">Buy now</a>
21	<a href="#">6J84123800</a> Joint, link	<a href="#">Buy now</a>
22	<a href="#">6J84123700</a> Joint, link	<a href="#">Buy now</a>
23	<a href="#">9020205088</a> Washer, plate (666)	<a href="#">Buy now</a>
24	<a href="#">9046805M03</a> Clip(6j8)	<a href="#">Buy now</a>
25	<a href="#">6824123700</a> Joint, link 2	<a href="#">Buy now</a>
26	<a href="#">9538005700</a> Nut (656)	<a href="#">Buy now</a>
27	<a href="#">6J82170711</a> Oil tank comp.	<a href="#">Buy now</a>
28	<a href="#">6H42177000</a> Oil tank cap assembly	<a href="#">Buy now</a>
29	<a href="#">6H12175700</a> Washer, special 1	<a href="#">Buy now</a>
30	<a href="#">6H12463300</a> Chain, Ball	<a href="#">Buy now</a>
31	<a href="#">6J82175800</a> Washer, special 2	<a href="#">Buy now</a>
32	<a href="#">6J81341100</a> Strainer, oil	<a href="#">Buy now</a>

# Oil Pump



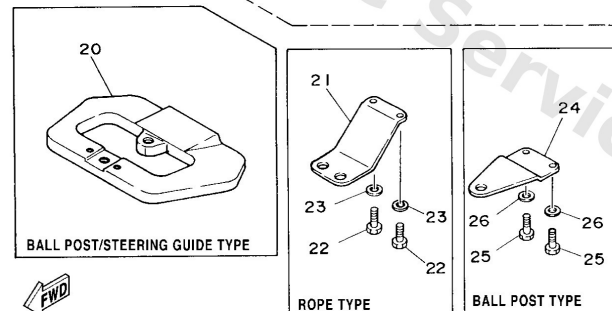
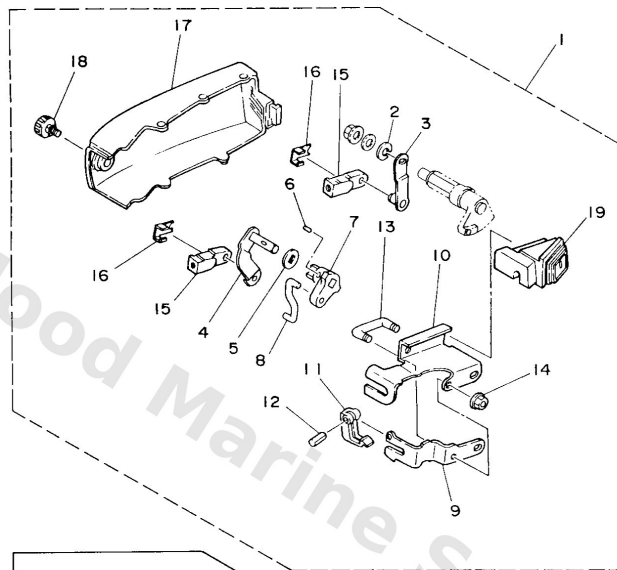
Ref	Part	
33	<a href="#">6J81341400</a> Gasket, strainer cover	<a href="#">Buy now</a>
34	<a href="#">6J81341600</a> Pipe, oil 1	<a href="#">Buy now</a>
35	<a href="#">9046711M08</a> Clip(72x)	<a href="#">Buy now</a>
36	<a href="#">9046708004</a> Clip, pipe 6162435600	<a href="#">Buy now</a>
37	<a href="#">9044511M03</a> Hose (l360)	<a href="#">Buy now</a>
38	<a href="#">9044610M01</a> Tube (6e5)	<a href="#">Buy now</a>
39	<a href="#">9044511M07</a> Hose (l70)	<a href="#">Buy now</a>
40	<a href="#">63D2174400</a> Breather	<a href="#">Buy now</a>
41	<a href="#">9044511M02</a> Hose (l100)	<a href="#">Buy now</a>
42	<a href="#">9044511M04</a> Hose (l600)	<a href="#">Buy now</a>
43	<a href="#">6E52437800</a> Pipe, joint 3	<a href="#">Buy now</a>
44	<a href="#">9046710M04</a> Clip, pipe 1 (6e9)	<a href="#">Buy now</a>
45	<a href="#">6A08231700</a> Damper, ignition coil	<a href="#">Buy now</a>
46	<a href="#">9038706119</a> Collar	<a href="#">Buy now</a>
47	<a href="#">9011906M65</a> Bolt, with washer	<a href="#">Buy now</a>

# Oil Pump



Ref	Part	
48	<a href="#">6J88572002</a> Oil level gauge assembly	<a href="#">Buy now</a>

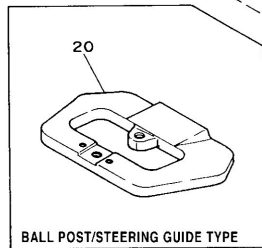
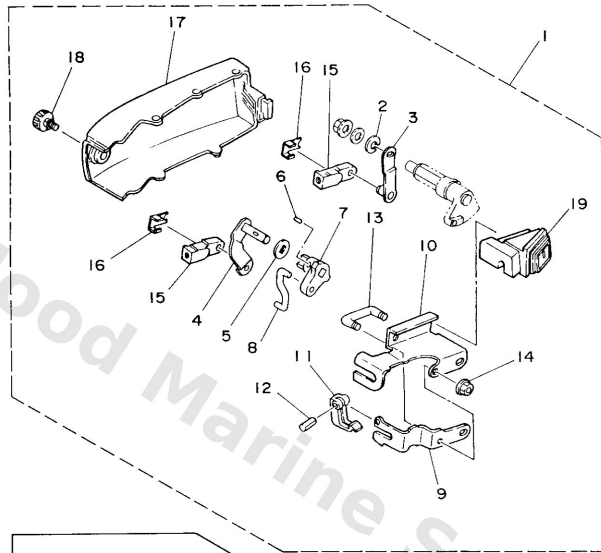
## Remo Con Attachment



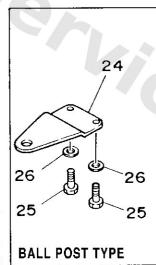
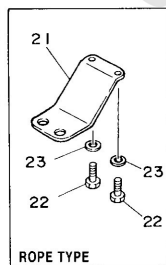
6J86100-9200

Ref	Part	
1	<a href="#">6J848501034D</a> Remocon attachment assembly AP	<a href="#">Buy now</a>
1	<a href="#">6J84850111</a> Attachment kit AP	<a href="#">Buy now</a>
2	<a href="#">9299008100</a> Ybs67-8 washer, spring	<a href="#">Buy now</a>
3	<a href="#">6J84853400</a> Throttle lever, control	<a href="#">Buy now</a>
4	<a href="#">6J84854402</a> Lever, shiftcontrol	<a href="#">Buy now</a>
5	<a href="#">6J84417700</a> Washer	<a href="#">Buy now</a>
6	<a href="#">9025403M03</a> Pin, spring	<a href="#">Buy now</a>
7	<a href="#">6J84417302</a> Lever, shift control	<a href="#">Buy now</a>
8	<a href="#">6J84216901</a> Joint	<a href="#">Buy now</a>
9	<a href="#">6J84853100</a> Bracket, remote control	<a href="#">Buy now</a>
10	<a href="#">6J84853200</a> Bracket, remote control 2	<a href="#">Buy now</a>
11	<a href="#">6824853850</a> Clamp, cable	<a href="#">Buy now</a>
12	<a href="#">9169030012</a> Pin, spring	<a href="#">Buy now</a>
13	<a href="#">9010906M29</a> Bolt(6j8)	<a href="#">Buy now</a>
14	<a href="#">9017906M24</a> Nut(6j8)	<a href="#">Buy now</a>

## Remo Con Attachment

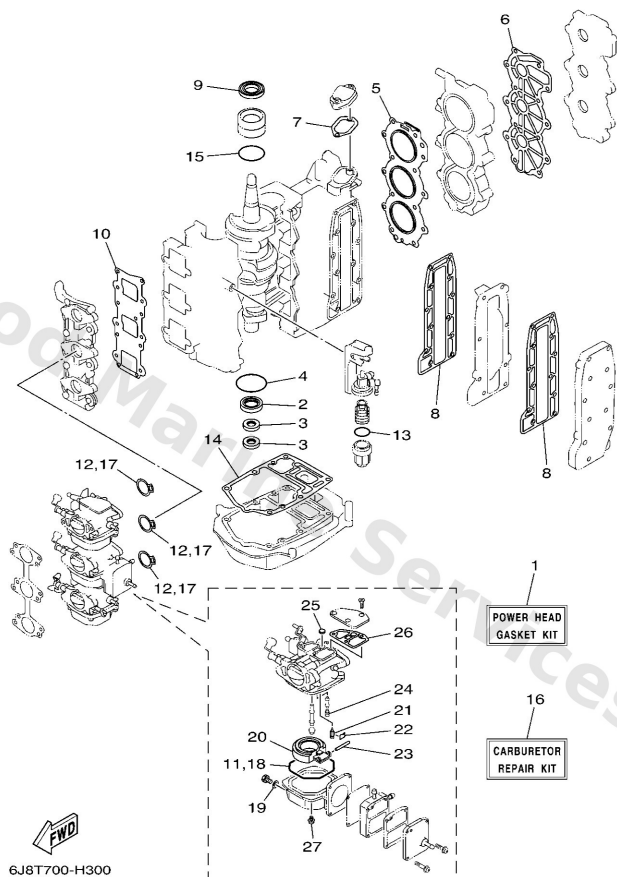


6J86100-9200



Ref	Part	
15	<a href="#">6G82636300</a> End, wire 1	<a href="#">Buy now</a>
16	<a href="#">6G82636400</a> End, wire 2	<a href="#">Buy now</a>
17	<a href="#">6J84272351</a> Cover, bottom (dbn:gray)	<a href="#">Buy now</a>
18	<a href="#">6J84284600</a> Screw	<a href="#">Buy now</a>
19	<a href="#">6J84272410</a> Grommet	<a href="#">Buy now</a>
20	<a href="#">6J848511018D</a> Hook, steering AP	<a href="#">Buy now</a>
21	<a href="#">6G84851100</a> Hook, steering AP ROPE TYPE	<a href="#">Buy now</a>
22	<a href="#">9709506016</a> Bolt, hexagon deep recess AP	<a href="#">Buy now</a>
23	<a href="#">9299506600</a> Washer, plain (646) AP	<a href="#">Buy now</a>
24	<a href="#">6G84851110</a> Hook, steering AP BALL POST TYPE	<a href="#">Buy now</a>

# Repair Kit 1

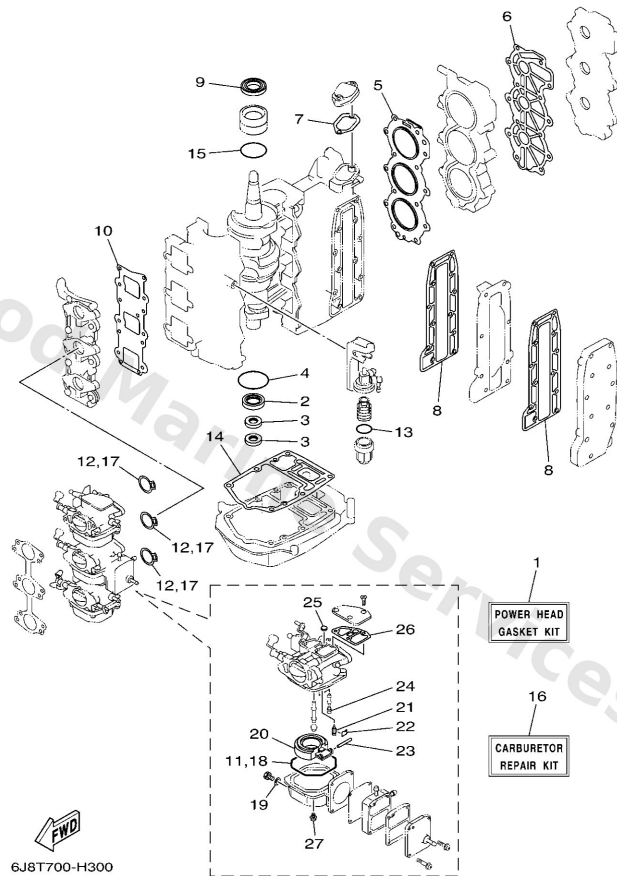


6J8T700-H300

Ref	Part	
1	<a href="#">6J8W000104</a> Power head gasket kit	<a href="#">Buy now</a>
2	<a href="#">9310125M28</a> Oil seal(6j8)	<a href="#">Buy now</a>
3	<a href="#">9310416M04</a> Oil seal(6a8)	<a href="#">Buy now</a>
4	<a href="#">9321056M80</a> O-ring(6j8)	<a href="#">Buy now</a>
5	<a href="#">6J811181A2</a> Gasket, cylinder head 1	<a href="#">Buy now</a>
6	<a href="#">6J811193A1</a> Gasket, head cover 1	<a href="#">Buy now</a>
7	<a href="#">6J812414A0</a> Gasket, cover	<a href="#">Buy now</a>
8	<a href="#">6J841114A0</a> Gasket, exhaust outer cover	<a href="#">Buy now</a>
9	<a href="#">9310226M27</a> Oil seal(6j8)	<a href="#">Buy now</a>
10	<a href="#">6J81362100</a> Gasket, valve seat	<a href="#">Buy now</a>
11	<a href="#">6J81498410</a> Gasket, float chamber	<a href="#">Buy now</a>
12	<a href="#">6J81419800</a> Gasket	<a href="#">Buy now</a>
13	<a href="#">9321032738</a> O-ring(1wg)	<a href="#">Buy now</a>
14	<a href="#">6J845113A0</a> Gasket, upper casing	<a href="#">Buy now</a>
15	<a href="#">9321042159</a> O-ring (647)	<a href="#">Buy now</a>

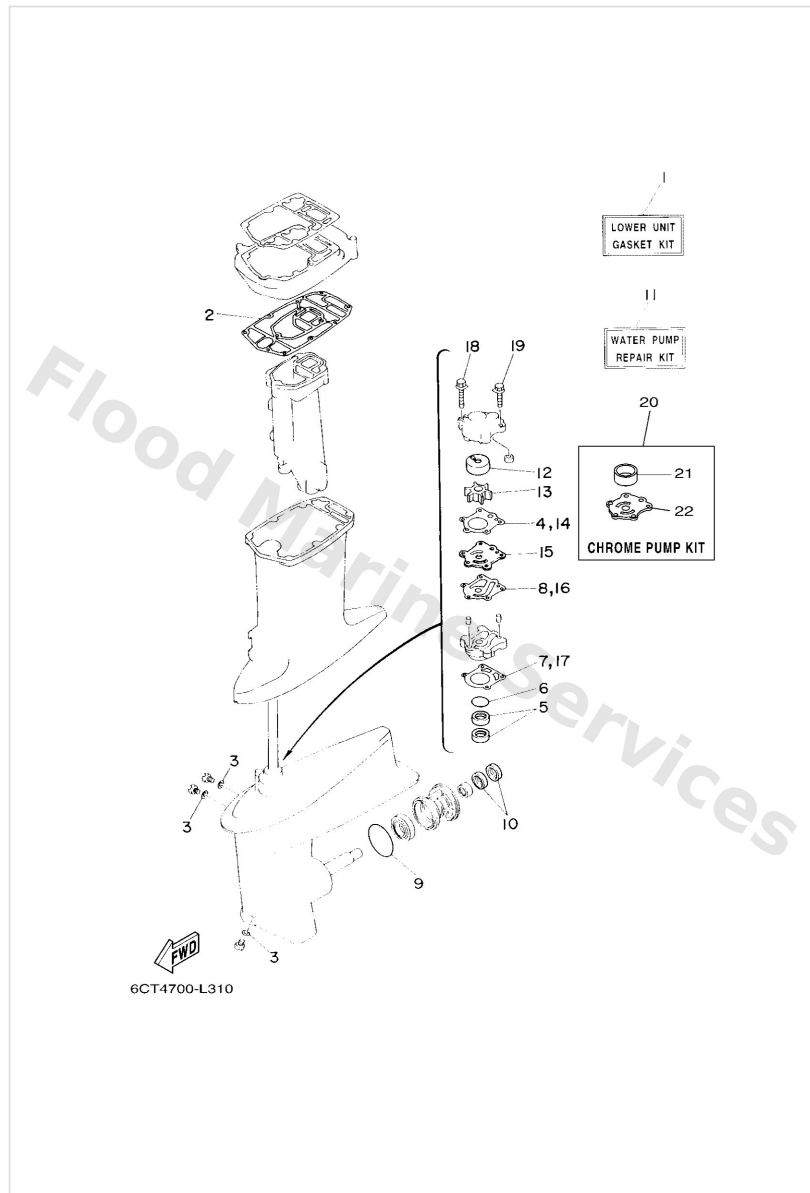


# Repair Kit 1



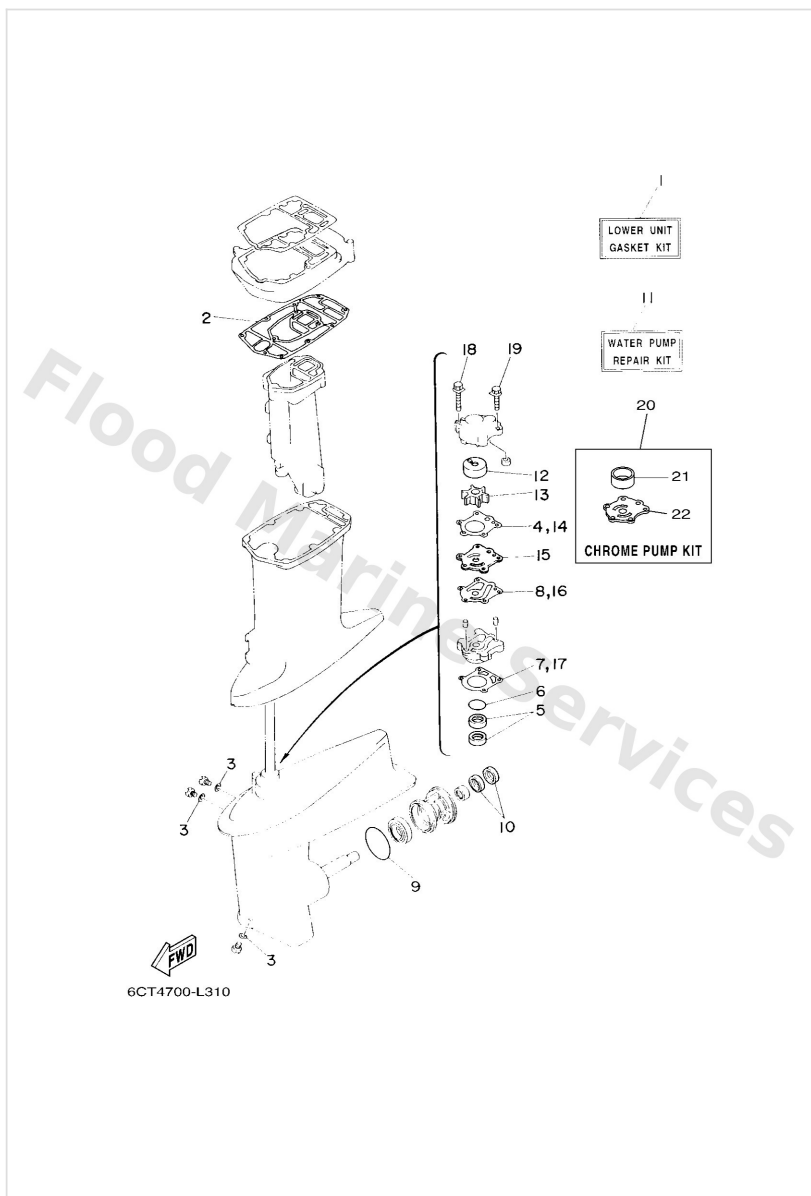
Ref	Part	
16	<a href="#">6J8W009302</a> Carburetor repair kit	<a href="#">Buy now</a>
19	<a href="#">6J81499500</a> Gasket, drin screw	<a href="#">Buy now</a>
20	<a href="#">6J81498510</a> Float	<a href="#">Buy now</a>
21	<a href="#">6E51454600</a> Valve, needle	<a href="#">Buy now</a>
22	<a href="#">6J81415900</a> Clip	<a href="#">Buy now</a>
23	<a href="#">6E51438601</a> Pin, float	<a href="#">Buy now</a>
24	<a href="#">6J81496600</a> Plug	<a href="#">Buy now</a>
25	<a href="#">6J81412600</a> Plug	<a href="#">Buy now</a>
26	<a href="#">6J81495910</a> Gasket	<a href="#">Buy now</a>
27	<a href="#">9798004112</a> Screw, pan head (686)	<a href="#">Buy now</a>

## Repair Kit 2



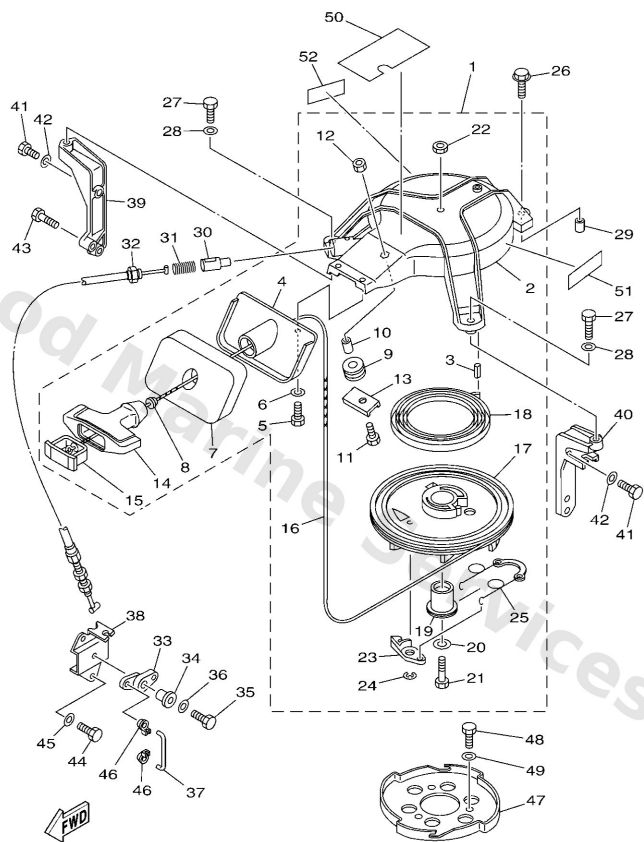
Ref	Part	
1	<a href="#">6J8W0001C2</a> Gasket kit	<a href="#">Buy now</a>
2	<a href="#">6J845114A1</a> Gasket, upper casing	<a href="#">Buy now</a>
3	<a href="#">9043008003</a> Gasket	<a href="#">Buy now</a>
4	<a href="#">66344315A0</a> Gasket,water pump 1	<a href="#">Buy now</a>
5	<a href="#">9310123070</a> Oil seal (663)	<a href="#">Buy now</a>
6	<a href="#">9321041042</a> O-ring (132)	<a href="#">Buy now</a>
7	<a href="#">66344316A0</a> Gasket,water pump 2	<a href="#">Buy now</a>
8	<a href="#">66344324A0</a> Gasket,cartridge outer plate	<a href="#">Buy now</a>
9	<a href="#">9321060MA3</a> O-ring(6j8)	<a href="#">Buy now</a>
10	<a href="#">9310120M07</a> Oil seal	<a href="#">Buy now</a>
11	<a href="#">6J8W0078A2</a> Water pump repair kit	<a href="#">Buy now</a>
12	<a href="#">6634432200</a> Insert, cartridge	<a href="#">Buy now</a>
13	<a href="#">6H44435202</a> Impeller	<a href="#">Buy now</a>
15	<a href="#">6634432300</a> Outer plate, cartridge	<a href="#">Buy now</a>
18	<a href="#">9011908M13</a> Bolt, with washer(6h0)	<a href="#">Buy now</a>

## Repair Kit 2



Ref	Part	
19	<a href="#">9011908M34</a> Bolt, with washer(6j8)	<a href="#">Buy now</a>
20	<a href="#">697W00780A</a> Chrome pump kit	<a href="#">Buy now</a>
21	<a href="#">6634432240</a> Insert, cartridge	<a href="#">Buy now</a>
22	<a href="#">6704432300</a> Outer plate, cartridge	<a href="#">Buy now</a>

# Starter



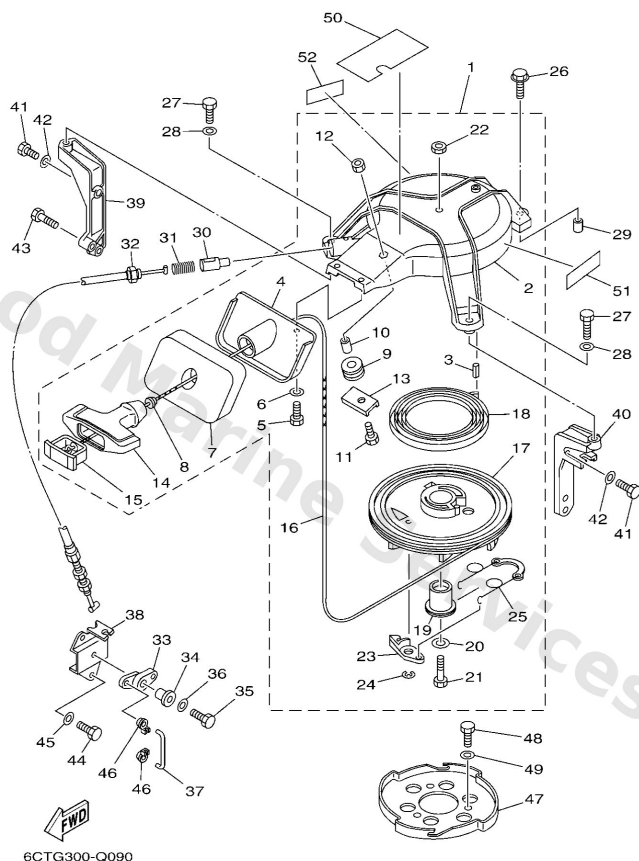
6CTG300-Q090

\*1: CUT FROM 50M ROLLS, PART NO. 90890-44373, CUTTING LENGTH 1.95M

\*1: A PRELEVER SUR BOBINE 50M, REFERENCE 90890-44373, LONGUEUR DE COUPE 1.95M

Ref	Part	
1	<a href="#">6J8Y130P00</a> Starter assembly	<a href="#">Buy now</a>
2	<a href="#">6J81571100</a> Case, starter	<a href="#">Buy now</a>
3	<a href="#">9169040014</a> Pin, spring (6f2)	<a href="#">Buy now</a>
4	<a href="#">6J815758018D</a> Guide Rope	<a href="#">Buy now</a>
5	<a href="#">9709506016</a> Bolt, hexagon deep recess	<a href="#">Buy now</a>
6	<a href="#">9299506600</a> Washer, plain (646)	<a href="#">Buy now</a>
7	<a href="#">6J81576200</a> Seal, rubber 2	<a href="#">Buy now</a>
8	<a href="#">6A01578900</a> Damper	<a href="#">Buy now</a>
9	<a href="#">6F51575200</a> Roller, wire	<a href="#">Buy now</a>
10	<a href="#">6F51575300</a> Bushing 1	<a href="#">Buy now</a>
11	<a href="#">9709506025</a> Bolt	<a href="#">Buy now</a>
12	<a href="#">9538006600</a> Nut(661)	<a href="#">Buy now</a>
13	<a href="#">6J81578700</a> Adaptor	<a href="#">Buy now</a>
14	<a href="#">6891575501</a> Handle, starter	<a href="#">Buy now</a>
15	<a href="#">6F51577902</a> Cover	<a href="#">Buy now</a>

# Starter



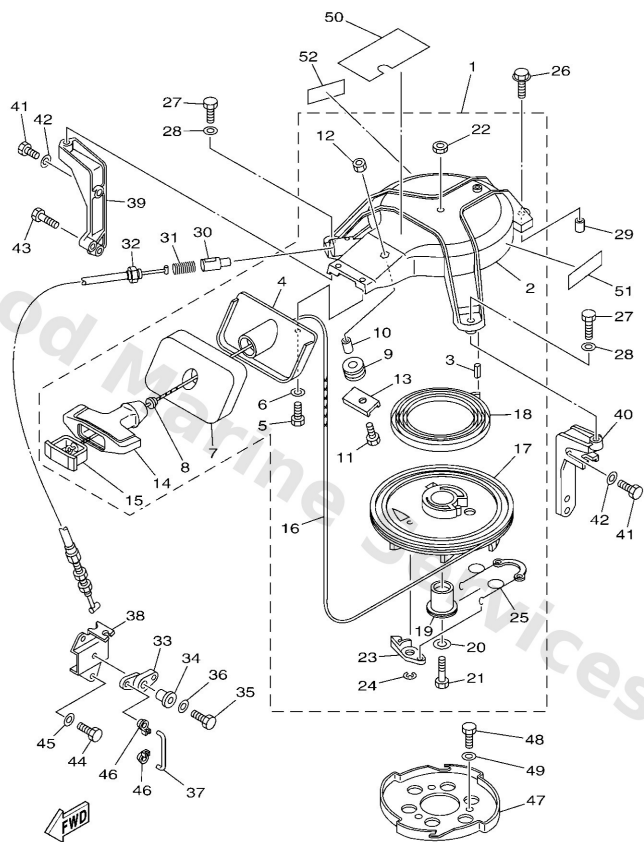
6CTG300-Q090

\*1: CUT FROM 50M ROLLS, PART NO. 90890-44373, CUTTING LENGTH 1.95M

\*1: A PRELEVER SUR BOBINE 50M, REFERENCE 90890-44373, LONGUEUR DE COUPE 1.95M

Ref	Part	
16	<a href="#">* item_description *1</a>	<a href="#">Buy now</a>
17	<a href="#">6J81571400</a> Drum, sheave	<a href="#">Buy now</a>
18	<a href="#">9051008M04</a> Spring, spiral (677)	<a href="#">Buy now</a>
19	<a href="#">6771571701</a> Shaft	<a href="#">Buy now</a>
20	<a href="#">9020106060</a> Washer, plate	<a href="#">Buy now</a>
22	<a href="#">9538006700</a> Nut	<a href="#">Buy now</a>
23	<a href="#">6761574103</a> Pawl, drive	<a href="#">Buy now</a>
24	<a href="#">9343006M02</a> Circlip (689)	<a href="#">Buy now</a>
25	<a href="#">6J81570500</a> Spring, drive pawl	<a href="#">Buy now</a>
26	<a href="#">9759506535</a> Bolt(j52)	<a href="#">Buy now</a>
29	<a href="#">9953010014</a> Pin, dowel	<a href="#">Buy now</a>
30	<a href="#">6561574800</a> Plunger, starter stop	<a href="#">Buy now</a>
31	<a href="#">9050110227</a> Spring, comprrshion(656)	<a href="#">Buy now</a>
32	<a href="#">6J81577000</a> Cable comp., starter stop	<a href="#">Buy now</a>
33	<a href="#">6J81574601</a> Arm	<a href="#">Buy now</a>

# Starter



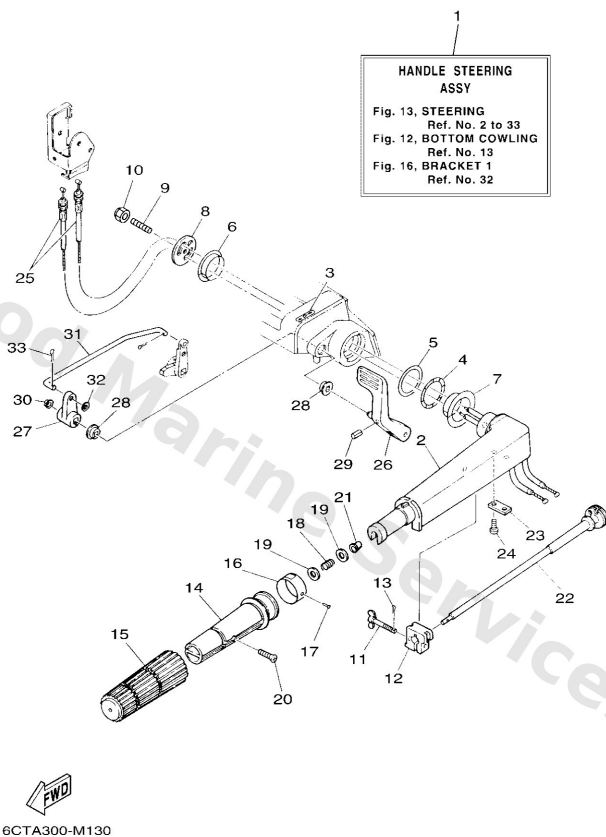
6CTG300-Q090

\*1: CUT FROM 50M ROLLS, PART NO. 90890-44373, CUTTING LENGTH 1.95M

\*1: A PRELEVER SUR BOBINE 50M, REFERENCE 90890-44373, LONGUEUR DE COUPE 1.95M

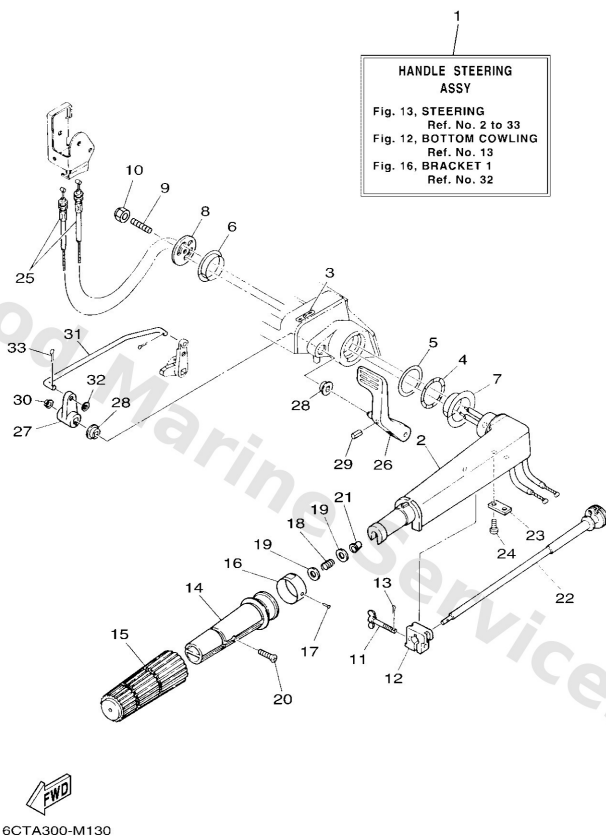
Ref	Part	
34	<a href="#">9038706M29</a> Coller (6a0)	<a href="#">Buy now</a>
37	<a href="#">6J81574700</a> Link	<a href="#">Buy now</a>
38	<a href="#">6J81577401</a> Stay 4	<a href="#">Buy now</a>
39	<a href="#">6J81577100</a> Stay 1	<a href="#">Buy now</a>
40	<a href="#">6J81577200</a> Stay 2	<a href="#">Buy now</a>
41	<a href="#">9701306020</a> Bolt(62y)	<a href="#">Buy now</a>
42	<a href="#">9290306600</a> Washer, plain (646)	<a href="#">Buy now</a>
43	<a href="#">9010106024</a> Bolt	<a href="#">Buy now</a>
46	<a href="#">6614126202</a> Joint, choke lever	<a href="#">Buy now</a>
47	<a href="#">6J81572301</a> Pulley, starter	<a href="#">Buy now</a>
48	<a href="#">9701308014</a> Bolt(692)	<a href="#">Buy now</a>
49	<a href="#">9290308600</a> Washer, plain (663)	<a href="#">Buy now</a>
50	<a href="#">6J81343791</a> Mark, caution	<a href="#">Buy now</a>
51	<a href="#">6EE8199540</a> Label, warning	<a href="#">Buy now</a>
52	<a href="#">6EE8199550</a> Label, warning	<a href="#">Buy now</a>

# Steering



Ref	Part	
1	<a href="#">6J8W0084114D</a> Handle steering assembly	<a href="#">Buy now</a>
2	<a href="#">6G142111128D</a> Handle, steering	<a href="#">Buy now</a>
3	<a href="#">6X34419100</a> Indicator, shift	<a href="#">Buy now</a>
4	<a href="#">9020636M21</a> Washer, wave(63v)	<a href="#">Buy now</a>
5	<a href="#">9020236M55</a> Washer, plate(63v)	<a href="#">Buy now</a>
6	<a href="#">9038633M96</a> Bush(63v)	<a href="#">Buy now</a>
7	<a href="#">9038634M97</a> Bush(63v)	<a href="#">Buy now</a>
8	<a href="#">6G14213102</a> Cover, handle steering	<a href="#">Buy now</a>
9	<a href="#">9011608016</a> Bolt, stud	<a href="#">Buy now</a>
10	<a href="#">9018508057</a> Nut, nylon (6j8)	<a href="#">Buy now</a>
11	<a href="#">6G14212501</a> Bolt, friction adjusting	<a href="#">Buy now</a>
12	<a href="#">6G14212600</a> Piece, friction	<a href="#">Buy now</a>
13	<a href="#">9149016010</a> Pin, cotter	<a href="#">Buy now</a>
14	<a href="#">6644211900</a> Grip, steering handle	<a href="#">Buy now</a>
15	<a href="#">6G14217700</a> Rubber, handle	<a href="#">Buy now</a>

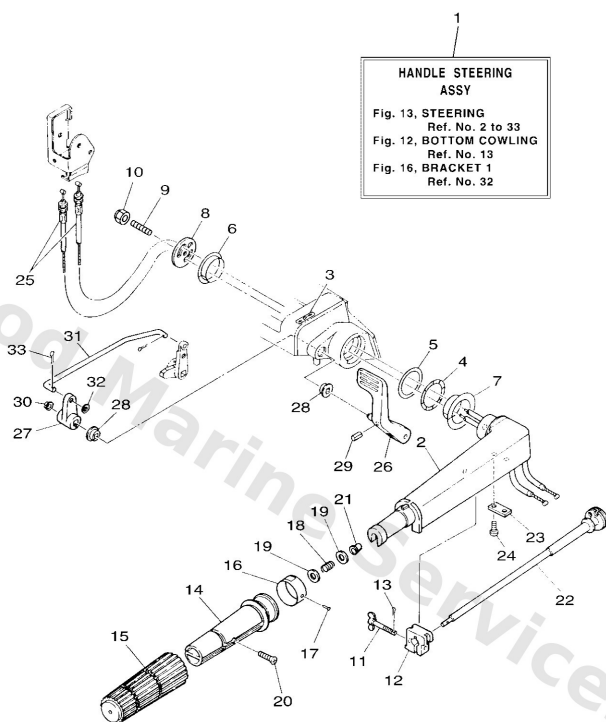
# Steering



Ref	Part	
16	<a href="#">6J84213700</a> Indicator, throttle	<a href="#">Buy now</a>
17	<a href="#">9026902M09</a> Rivet(6I5)	<a href="#">Buy now</a>
18	<a href="#">9050123215</a> Spring (655)	<a href="#">Buy now</a>
19	<a href="#">9020110M02</a> Washer, plate(6g9)	<a href="#">Buy now</a>
20	<a href="#">9015205011</a> Screw, countersunk	<a href="#">Buy now</a>
21	<a href="#">9038608032</a> Bushing (650)	<a href="#">Buy now</a>
22	<a href="#">6G14213801</a> Lever, throttle	<a href="#">Buy now</a>
23	<a href="#">6E04215902</a> Stay	<a href="#">Buy now</a>
24	<a href="#">9788505012</a> Screw,pan head (646)	<a href="#">Buy now</a>
25	<a href="#">6J82630100</a> Throttle cable assembly	<a href="#">Buy now</a>
26	<a href="#">6J844111018D</a> Handle, gear shift	<a href="#">Buy now</a>
27	<a href="#">6J84412500</a> Lever, shift rod	<a href="#">Buy now</a>
28	<a href="#">6824413200</a> Bushing	<a href="#">Buy now</a>
29	<a href="#">9025403M04</a> Pin, spring (6h3)	<a href="#">Buy now</a>
30	<a href="#">9038606M12</a> Bushing (688)	<a href="#">Buy now</a>

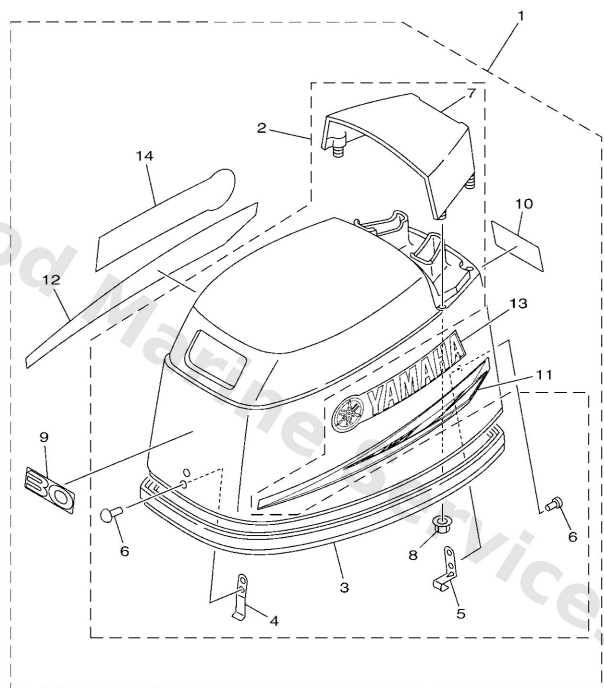


# Steering



Ref	Part	
31	<a href="#">6J84412400</a> Link, shift rod	<a href="#">Buy now</a>
32	<a href="#">9299006200</a> Ybs66-6 washer, plain	<a href="#">Buy now</a>
33	<a href="#">9149020012</a> Pin, cotter (648)	<a href="#">Buy now</a>

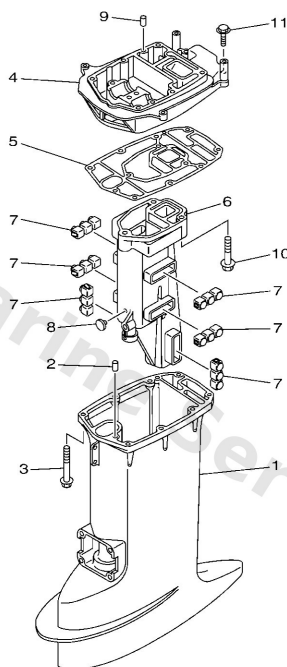
## Top Cowling



6CTB700-N020

Ref	Part	
1	<a href="#">6J84261050</a> Top cowling assembly	<a href="#">Buy now</a>
2	<a href="#">6J84261A00</a> Top cowling w/o graphics	<a href="#">Buy now</a>
3	<a href="#">6J84261500</a> Seal	<a href="#">Buy now</a>
4	<a href="#">6J84265103</a> Hook	<a href="#">Buy now</a>
5	<a href="#">6J84265200</a> Hook	<a href="#">Buy now</a>
6	<a href="#">9026604M00</a> Rivet 2 (662)	<a href="#">Buy now</a>
7	<a href="#">6J842613004D</a> Molding, air duct	<a href="#">Buy now</a>
8	<a href="#">9017906M24</a> Nut(6j8)	<a href="#">Buy now</a>
9	<a href="#">61T4267840</a> Graphic, rear	<a href="#">Buy now</a>
11	<a href="#">61R4267540</a> Graphic, side 1	<a href="#">Buy now</a>
12	<a href="#">61R4267640</a> Graphic, side 2	<a href="#">Buy now</a>
13	<a href="#">61R4268100</a> Mark, cowling	<a href="#">Buy now</a>

## Upper Casing



  
6CT8300-L170

Ref	Part	
1	<a href="#">6J845111118D</a> Casing, upper L(21.5")	<a href="#">Buy now</a>
2	<a href="#">9360612019</a> Pin, dowel (614)	<a href="#">Buy now</a>
3	<a href="#">9011908M31</a> Bolt, with washer(6j8)	<a href="#">Buy now</a>
4	<a href="#">6J84113701CA</a> Guide, exhaust	<a href="#">Buy now</a>
5	<a href="#">6J845114A1</a> Gasket, upper casing	<a href="#">Buy now</a>
6	<a href="#">6J84113100CA</a> Manifold, ext. 1	<a href="#">Buy now</a>
7	<a href="#">6J81473700</a> Damper, muffler	<a href="#">Buy now</a>
8	<a href="#">9033807M00</a> Plug(6j8)	<a href="#">Buy now</a>
10	<a href="#">9757508550</a> Bolt, with washer	<a href="#">Buy now</a>
11	<a href="#">9757508530</a> Bolt, hexagon w/w deep recess	<a href="#">Buy now</a>

# Disclaimer

This document is provided for convenience only. It is **not** an official Yamaha publication and is **not supplied, endorsed, or approved** by Yamaha Motor Co., Ltd.

Reasonable efforts are made to keep information accurate; however diagrams, part references, supersessions, descriptions, and applicability may contain errors or omissions. Specifications and part availability may change without notice.

You are responsible for confirming the correct parts for your engine (including model code, year, serial range, and any superseded part numbers) before ordering or fitting.