



# Yamaha 3AMH 2003

## Parts Manual

[www.floodmarine.co.uk](http://www.floodmarine.co.uk)

+44 2882 246 539

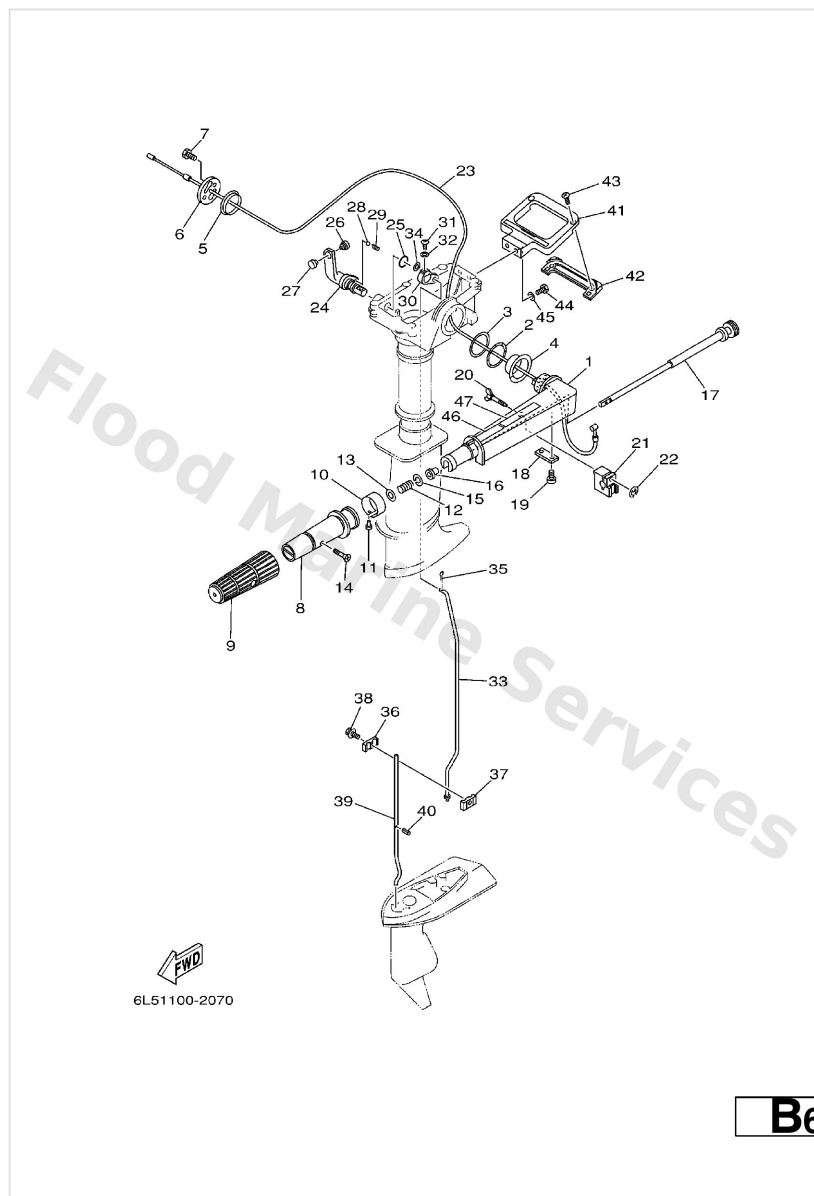
Authorised Yamaha Dealers



# Contents

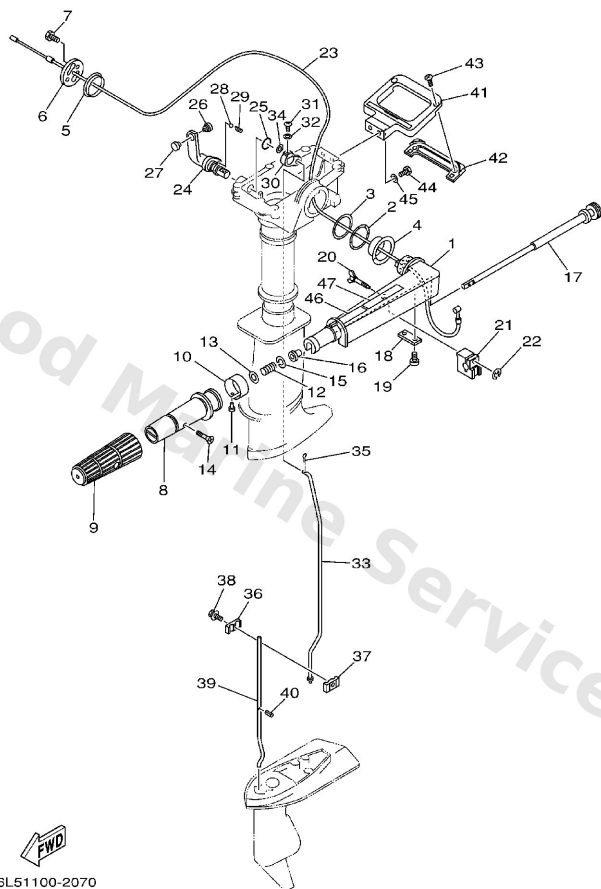
|                               |    |
|-------------------------------|----|
| <b>CONTROL</b>                | 3  |
| <b>COWLING . FUEL</b>         | 7  |
| <b>CYLINDER. CRANKCASE</b>    | 10 |
| <b>ELECTRICAL</b>             | 13 |
| <b>GENERATOR</b>              | 14 |
| <b>INTAKE</b>                 | 16 |
| <b>LOWER CASING. DRIVE</b>    | 20 |
| <b>REPAIR KIT</b>             | 25 |
| <b>STARTER</b>                | 28 |
| <b>UPPER CASING . BRACKET</b> | 30 |

# Control



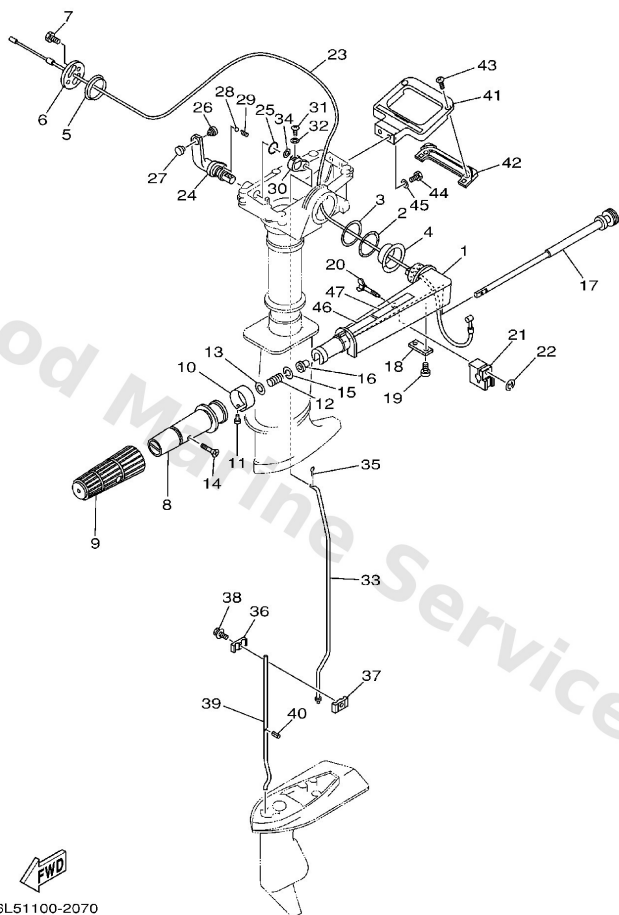
| Ref | Part   |                         |
|-----|--|-------------------------|
| 1   | <a href="#">6G1-42111-11-4D</a><br>Handle, steering    | <a href="#">Buy now</a> |
| 2   | <a href="#">90206-36M21</a><br>Washer, wave(63v)       | <a href="#">Buy now</a> |
| 3   | <a href="#">90202-36M55</a><br>Washer, plate(63v)      | <a href="#">Buy now</a> |
| 4   | <a href="#">90386-34M97</a><br>Bush(63v)               | <a href="#">Buy now</a> |
| 5   | <a href="#">90386-33M96</a><br>Bush(63v)               | <a href="#">Buy now</a> |
| 6   | <a href="#">6G1-42131-01</a><br>Cover, handle steering | <a href="#">Buy now</a> |
| 7   | <a href="#">97095-06020</a><br>Bolt(7u8)               | <a href="#">Buy now</a> |
| 8   | <a href="#">664-42119-00</a><br>Grip, steering handle  | <a href="#">Buy now</a> |
| 9   | <a href="#">6G1-42177-00</a><br>Rubber, handle         | <a href="#">Buy now</a> |
| 10  | <a href="#">6L5-42137-20</a><br>Indicator, throttle    | <a href="#">Buy now</a> |
| 11  | <a href="#">90269-02M09</a><br>Rivet(6I5)              | <a href="#">Buy now</a> |
| 12  | <a href="#">90501-23215</a><br>Spring (655)            | <a href="#">Buy now</a> |
| 13  | <a href="#">92903-10600</a><br>Washer, plate           | <a href="#">Buy now</a> |
| 14  | <a href="#">90149-05M13</a><br>Screw, countersunk      | <a href="#">Buy now</a> |
| 15  | <a href="#">90209-08M17</a><br>Washer(6I5)             | <a href="#">Buy now</a> |

# Control



| Ref | Part   |                         |
|-----|--|-------------------------|
| 16  | <a href="#">90386-08032</a><br>Bushing (650)             | <a href="#">Buy now</a> |
| 17  | <a href="#">6G1-42138-01</a><br>Lever, throttle          | <a href="#">Buy now</a> |
| 18  | <a href="#">6E0-42159-02</a><br>Stay                     | <a href="#">Buy now</a> |
| 19  | <a href="#">97885-05012</a><br>Screw,pan head (646)      | <a href="#">Buy now</a> |
| 20  | <a href="#">6L5-42125-00</a><br>Bolt, friction adjusting | <a href="#">Buy now</a> |
| 21  | <a href="#">6G1-42126-00</a><br>Piece, friction          | <a href="#">Buy now</a> |
| 22  | <a href="#">99080-03600</a><br>Circlip(615)              | <a href="#">Buy now</a> |
| 23  | <a href="#">6L5-26301-01</a><br>Throttle cable assembly  | <a href="#">Buy now</a> |
| 24  | <a href="#">6L5-44111-00</a><br>Handle, gear shift       | <a href="#">Buy now</a> |
| 25  | <a href="#">93210-12327</a><br>O-ring(3ld)               | <a href="#">Buy now</a> |
| 26  | <a href="#">6L5-44196-20</a><br>Indicator 3              | <a href="#">Buy now</a> |
| 27  | <a href="#">6L5-44197-20</a><br>Indicator 4              | <a href="#">Buy now</a> |
| 28  | <a href="#">93505-16024</a><br>Ball                      | <a href="#">Buy now</a> |
| 29  | <a href="#">90501-12274</a><br>Spring 6554411600         | <a href="#">Buy now</a> |
| 30  | <a href="#">6L5-44121-00</a><br>Lever, shift rod         | <a href="#">Buy now</a> |

# Control

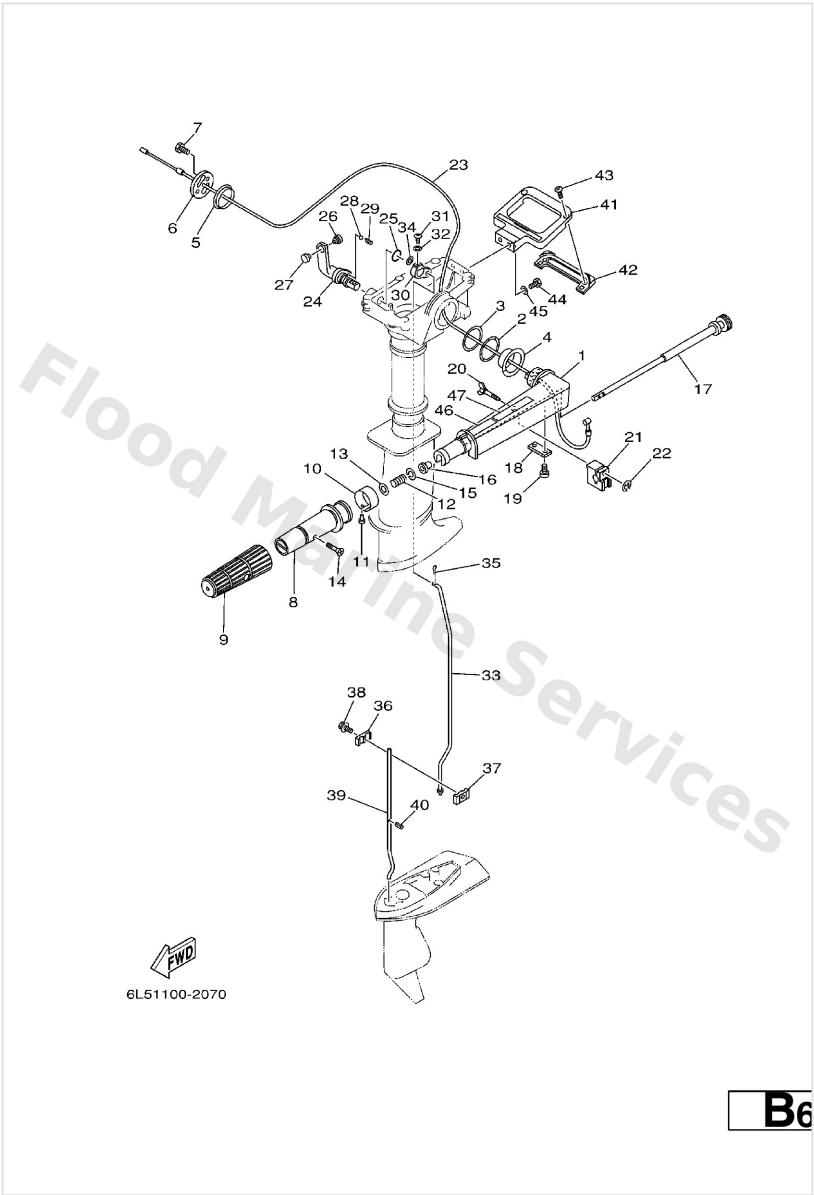


6L51100-2070

**B6**

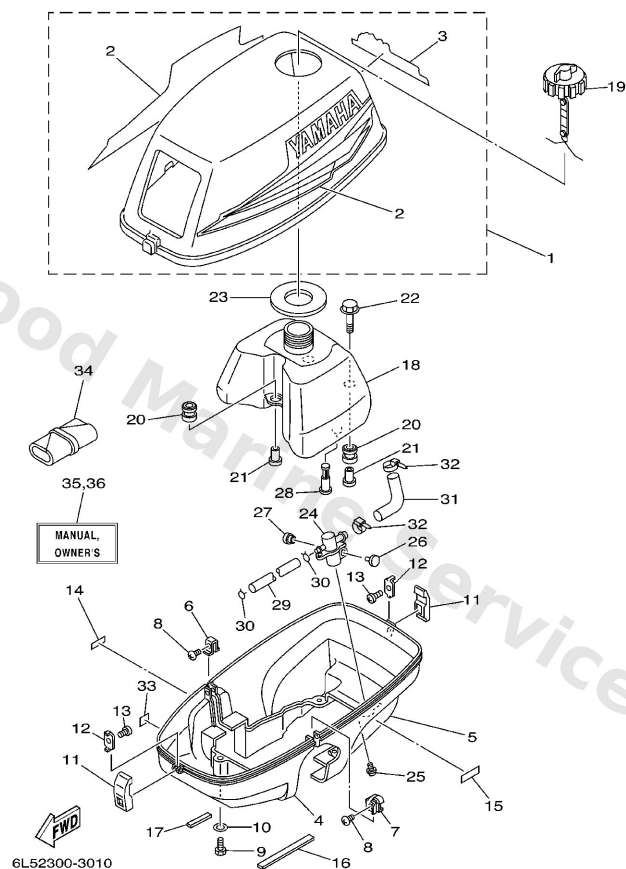
| Ref | Part  |                         |
|-----|---|-------------------------|
| 31  | <a href="#">97780-40520</a><br>Ybs83-420 screw,panh,tapping | <a href="#">Buy now</a> |
| 32  | <a href="#">92990-04600</a><br>Washer, plain (646)          | <a href="#">Buy now</a> |
| 33  | <a href="#">6L5-44143-00</a><br>Rod, shift                  | <a href="#">Buy now</a> |
| 34  | <a href="#">92990-05600</a><br>Washer, plain (646)          | <a href="#">Buy now</a> |
| 35  | <a href="#">91490-16010</a><br>Pin, cotter                  | <a href="#">Buy now</a> |
| 36  | <a href="#">6E0-44145-00</a><br>Connector, shift rod 1      | <a href="#">Buy now</a> |
| 37  | <a href="#">6E0-44146-00</a><br>Connector, shift rod 2      | <a href="#">Buy now</a> |
| 38  | <a href="#">95895-06020</a><br>Bolt, flange(jk3)            | <a href="#">Buy now</a> |
| 39  | <a href="#">6L5-44144-00</a><br>Rod, shift<br>S             | <a href="#">Buy now</a> |
| 39  | <a href="#">6L5-44144-10</a><br>Rod, shift<br>L             | <a href="#">Buy now</a> |
| 40  | <a href="#">91609-25014</a><br>Pin, Spring                  | <a href="#">Buy now</a> |
| 41  | <a href="#">6L5-42731-00-4D</a><br>Carrying handle          | <a href="#">Buy now</a> |
| 42  | <a href="#">6L5-42735-20</a><br>Protector                   | <a href="#">Buy now</a> |
| 43  | <a href="#">90161-04M02</a><br>Screw, tapping (676)         | <a href="#">Buy now</a> |
| 45  | <a href="#">92995-06600</a><br>Washer, plain (646)          | <a href="#">Buy now</a> |

Control



| Ref | Part   |                         |
|-----|--|-------------------------|
| 46  | <a href="#">6A1-2415A-41</a><br>Label, caution | <a href="#">Buy now</a> |
| 47  | <a href="#">6A1-2415A-51</a><br>Label Caution  | <a href="#">Buy now</a> |

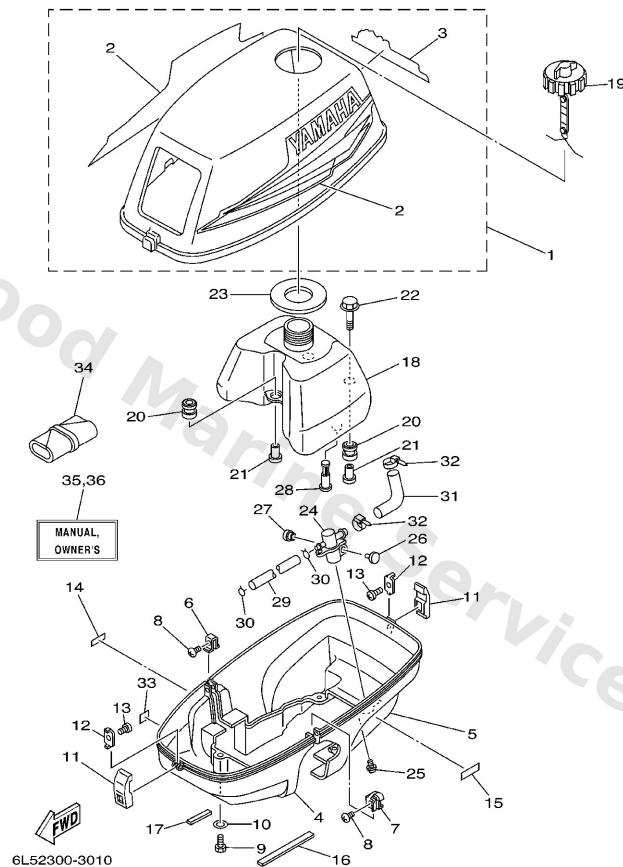
## Cowling . Fuel



**A4**

| Ref | Part   |                         |
|-----|--|-------------------------|
| 1   | <a href="#">6L5-42610-54-4D</a><br>Top Cowling assembly  | <a href="#">Buy now</a> |
| 2   | <a href="#">6L5-W0070-13</a><br>Graphic Set              | <a href="#">Buy now</a> |
| 3   | <a href="#">6L5-42678-51</a><br>Graphic, Rear            | <a href="#">Buy now</a> |
| 4   | <a href="#">6L5-42711-11</a><br>Cowling, bottom          | <a href="#">Buy now</a> |
| 5   | <a href="#">6L5-42712-12</a><br>Cowling, bottom          | <a href="#">Buy now</a> |
| 6   | <a href="#">6L5-42774-00</a><br>Stay, apron 1            | <a href="#">Buy now</a> |
| 7   | <a href="#">6L5-42775-00</a><br>Stay, apron 2            | <a href="#">Buy now</a> |
| 8   | <a href="#">97880-05010</a><br>Screw, pan head(62x)      | <a href="#">Buy now</a> |
| 9   | <a href="#">97095-06016</a><br>Bolt, hexagon deep recess | <a href="#">Buy now</a> |
| 10  | <a href="#">92995-06600</a><br>Washer, plain (646)       | <a href="#">Buy now</a> |
| 11  | <a href="#">6L5-42647-00</a><br>Holder, clamp band       | <a href="#">Buy now</a> |
| 12  | <a href="#">6L5-42823-00</a><br>Plate, stop              | <a href="#">Buy now</a> |
| 13  | <a href="#">90167-03M02</a><br>Screw, tapping(6l5)       | <a href="#">Buy now</a> |
| 14  | <a href="#">6L5-44191-00</a><br>Indicator, Shift         | <a href="#">Buy now</a> |
| 15  | <a href="#">6L5-24591-00</a><br>Emblem, Fuel Cock        | <a href="#">Buy now</a> |

## Cowling . Fuel

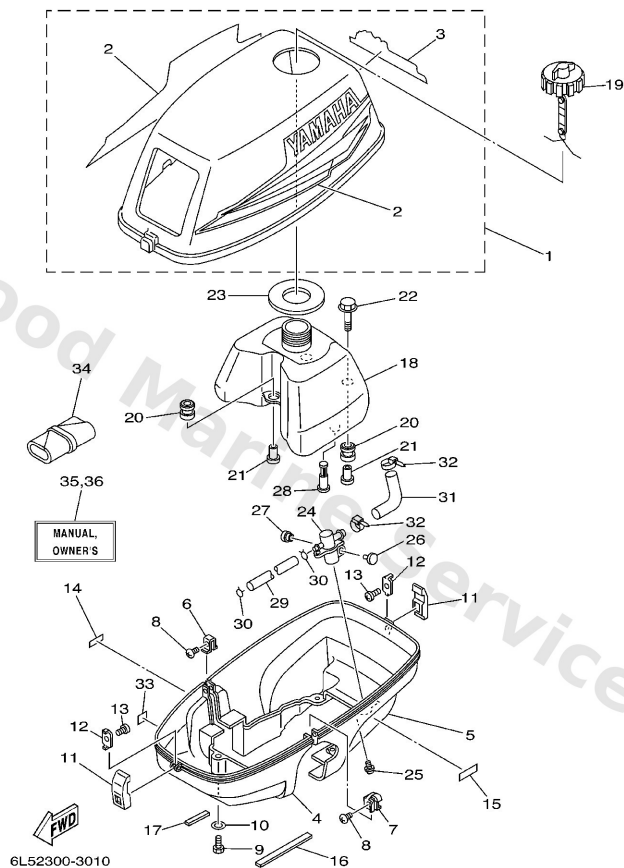


A4

| Ref | Part   |                         |
|-----|--|-------------------------|
| 16  | <a href="#">6L5-42662-00</a><br>Damper                 | <a href="#">Buy now</a> |
| 17  | <a href="#">6L5-42663-00</a><br>Damper                 | <a href="#">Buy now</a> |
| 18  | <a href="#">6L5-24111-02</a><br>Tank, fuel             | <a href="#">Buy now</a> |
| 19  | <a href="#">6L5-24610-20</a><br>Cap assembly           | <a href="#">Buy now</a> |
| 20  | <a href="#">6A0-82317-00</a><br>Damper, ignition coil  | <a href="#">Buy now</a> |
| 21  | <a href="#">624-42542-00</a><br>Collar                 | <a href="#">Buy now</a> |
| 22  | <a href="#">90119-06M65</a><br>Bolt, with washer       | <a href="#">Buy now</a> |
| 23  | <a href="#">6L5-24641-00</a><br>Gasket, cap 1          | <a href="#">Buy now</a> |
| 24  | <a href="#">6L5-24500-60</a><br>Fuel cock assembly 1   | <a href="#">Buy now</a> |
| 25  | <a href="#">90159-06M10</a><br>Screw, with washer(6L5) | <a href="#">Buy now</a> |
| 26  | <a href="#">6L5-44196-20</a><br>Indicator 3            | <a href="#">Buy now</a> |
| 27  | <a href="#">6L5-44197-20</a><br>Indicator 4            | <a href="#">Buy now</a> |
| 28  | <a href="#">6L5-24251-00</a><br>Strainer 1             | <a href="#">Buy now</a> |
| 29  | <a href="#">6L5-24311-00</a><br>Pipe, fuel 2           | <a href="#">Buy now</a> |
| 30  | <a href="#">90467-08004</a><br>Clip, pipe 6162435600   | <a href="#">Buy now</a> |



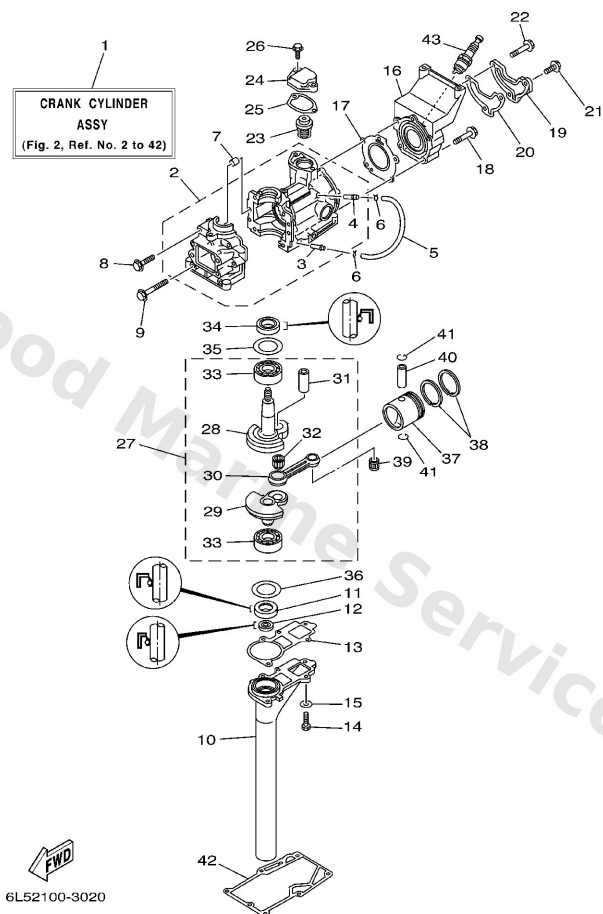
## Cowling . Fuel



A4

| Ref | Part  |                         |
|-----|---|-------------------------|
| 31  | <a href="#">6L5-24312-00</a><br>Pipe 2        | <a href="#">Buy now</a> |
| 32  | <a href="#">90465-13M11</a><br>Clamp (6e5)    | <a href="#">Buy now</a> |
| 33  | <a href="#">6A1-28176-00</a><br>Label Caution | <a href="#">Buy now</a> |
| 34  | <a href="#">656-W2810-02</a><br>Tool kit      | <a href="#">Buy now</a> |

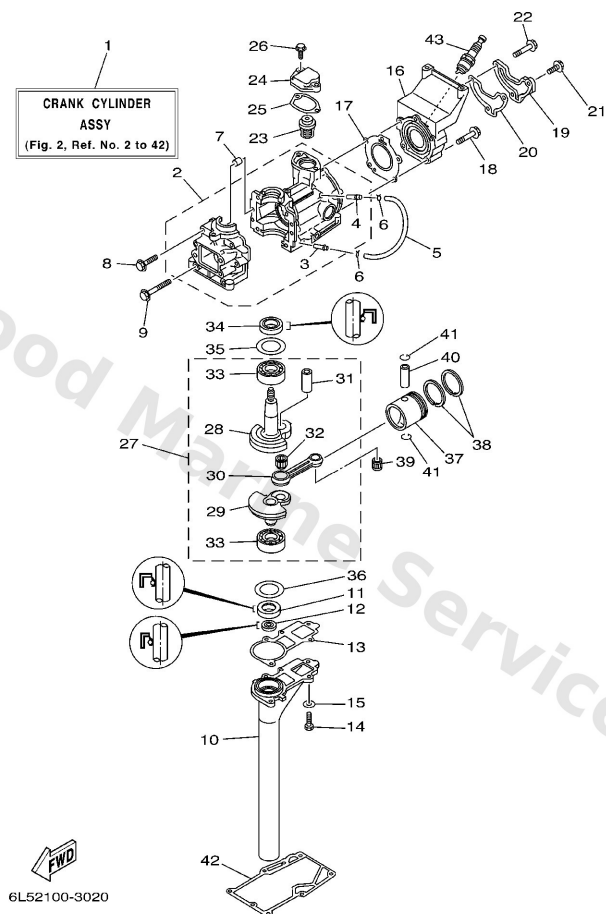
# Cylinder. Crankcase



**A6**

| Ref | Part   |                         |
|-----|--|-------------------------|
| 3   | <a href="#">624-14485-00</a><br>Pipe, joint              | <a href="#">Buy now</a> |
| 4   | <a href="#">6E5-11372-01</a><br>Nipple, hose             | <a href="#">Buy now</a> |
| 5   | <a href="#">90445-07M29</a><br>Hose (I200)               | <a href="#">Buy now</a> |
| 6   | <a href="#">90467-06016</a><br>Clip (655)                | <a href="#">Buy now</a> |
| 7   | <a href="#">93606-12019</a><br>Pin, dowel (614)          | <a href="#">Buy now</a> |
| 8   | <a href="#">90105-06M16</a><br>Bolt (6e0)                | <a href="#">Buy now</a> |
| 9   | <a href="#">90105-06M40</a><br>Bolt, washer based(6I5)   | <a href="#">Buy now</a> |
| 11  | <a href="#">93101-20M29</a><br>Oil seal(6j1)             | <a href="#">Buy now</a> |
| 12  | <a href="#">93101-09M42</a><br>Oil seal(6I5)             | <a href="#">Buy now</a> |
| 13  | <a href="#">6L5-15369-A0</a><br>Gasket, oil seal housing | <a href="#">Buy now</a> |
| 14  | <a href="#">97095-06020</a><br>Bolt(7u8)                 | <a href="#">Buy now</a> |
| 15  | <a href="#">92995-06600</a><br>Washer, plain (646)       | <a href="#">Buy now</a> |
| 17  | <a href="#">6L5-11181-A2</a><br>Gasket, cylinder head 1  | <a href="#">Buy now</a> |
| 18  | <a href="#">90119-06047</a><br>Bolt, with washer         | <a href="#">Buy now</a> |
| 20  | <a href="#">6L5-11193-A1</a><br>Gasket, head cover       | <a href="#">Buy now</a> |

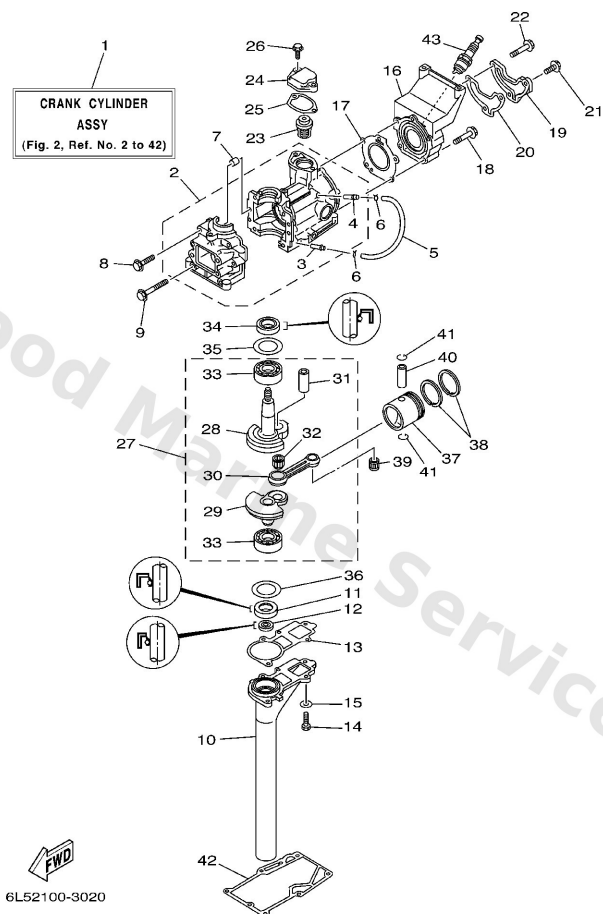
# Cylinder. Crankcase



A6

| Ref | Part  |                         |
|-----|---|-------------------------|
| 21  | <a href="#">90119-06MA2</a><br>Bolt, with washer    | <a href="#">Buy now</a> |
| 22  | <a href="#">90119-06027</a><br>Bolt, with washer    | <a href="#">Buy now</a> |
| 23  | <a href="#">6E5-12411-01</a><br>Thermostat          | <a href="#">Buy now</a> |
| 25  | <a href="#">6L5-12414-A1</a><br>Gasket, cover       | <a href="#">Buy now</a> |
| 27  | <a href="#">6L5-11400-00</a><br>Crankshaft assembly | <a href="#">Buy now</a> |
| 28  | <a href="#">6L5-11412-00</a><br>Crank 1             | <a href="#">Buy now</a> |
| 29  | <a href="#">6L5-11422-00</a><br>Crank 2             | <a href="#">Buy now</a> |
| 30  | <a href="#">6L5-11651-00</a><br>Rod, connecting     | <a href="#">Buy now</a> |
| 31  | <a href="#">6L5-11681-00</a><br>Pin, crank 1        | <a href="#">Buy now</a> |
| 32  | <a href="#">93310-416N7</a><br>Brg,needle           | <a href="#">Buy now</a> |
| 33  | <a href="#">93306-204U0</a><br>Bearing(6e0)         | <a href="#">Buy now</a> |
| 34  | <a href="#">93102-20M06</a><br>Oil seal(6j1)        | <a href="#">Buy now</a> |
| 35  | <a href="#">90201-32M00</a><br>Washer, plate(6l5)   | <a href="#">Buy now</a> |
| 36  | <a href="#">90201-32M01</a><br>Washer, plate(6l5)   | <a href="#">Buy now</a> |
| 37  | <a href="#">6L5-11631-00-96</a><br>Piston (std)     | <a href="#">Buy now</a> |

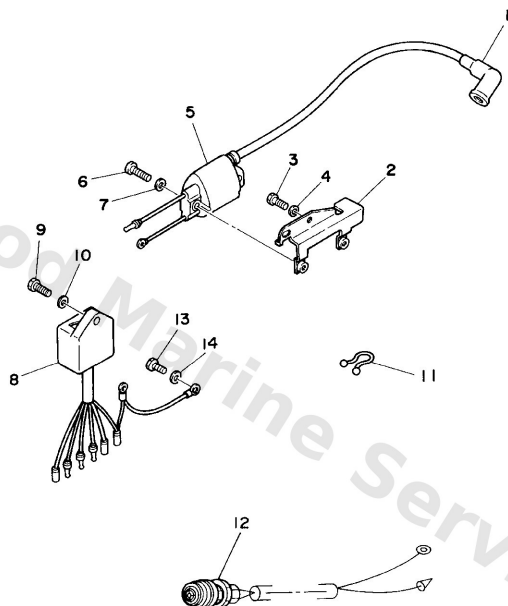
# Cylinder. Crankcase



A6

| Ref | Part   |                         |
|-----|--|-------------------------|
| 37  | <a href="#">6L5-11635-00</a><br>Piston (0.25mm o/s)<br>AP          | <a href="#">Buy now</a> |
| 37  | <a href="#">6L5-11636-00</a><br>Piston (0.50mm o/s)<br>AP          | <a href="#">Buy now</a> |
| 38  | <a href="#">6L5-11610-00</a><br>Piston ring set (std)              | <a href="#">Buy now</a> |
| 38  | <a href="#">6L5-11610-10</a><br>Piston ring set (0.25mm o/s)<br>AP | <a href="#">Buy now</a> |
| 38  | <a href="#">6L5-11610-20</a><br>Piston ring set (0.50mm o/s)<br>AP | <a href="#">Buy now</a> |
| 39  | <a href="#">93310-112U0</a><br>Bearing, cylindrical(6I5)           | <a href="#">Buy now</a> |
| 40  | <a href="#">6L5-11633-00</a><br>Pin, piston                        | <a href="#">Buy now</a> |
| 41  | <a href="#">93450-13022</a><br>Circlip 132116340000                | <a href="#">Buy now</a> |
| 42  | <a href="#">6L5-45113-A1</a><br>Gasket, upper casing               | <a href="#">Buy now</a> |
| 43  | <a href="#">94702-00274</a><br>Plug, spark (br6hs-10)              | <a href="#">Buy now</a> |

# Electrical

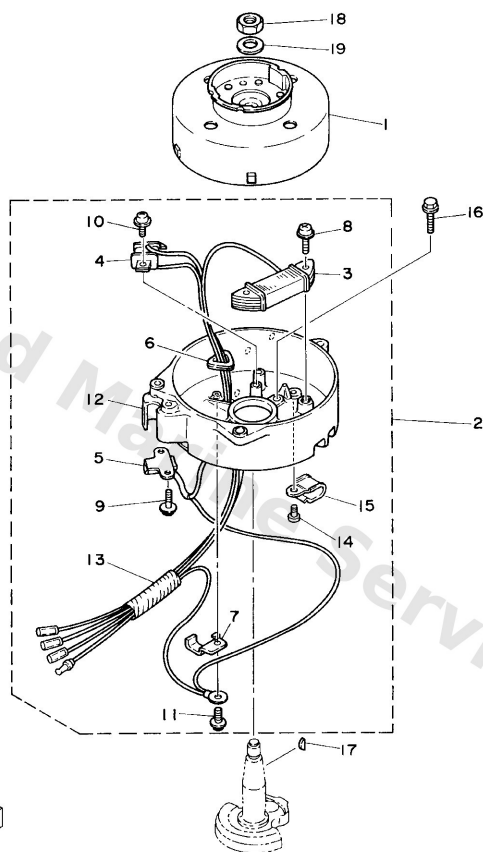


6L51100-4060

**B5**

| Ref | Part   |                         |
|-----|--|-------------------------|
| 1   | <a href="#">6G1-82370-21</a><br>Plug cap assembly        | <a href="#">Buy now</a> |
| 2   | <a href="#">6L5-82316-00</a><br>Bracket, ignition coil   | <a href="#">Buy now</a> |
| 3   | <a href="#">97095-06016</a><br>Bolt, hexagon deep recess | <a href="#">Buy now</a> |
| 4   | <a href="#">92995-06600</a><br>Washer, plain (646)       | <a href="#">Buy now</a> |
| 5   | <a href="#">6L5-85570-N0</a><br>Ignition coil assembly   | <a href="#">Buy now</a> |
| 6   | <a href="#">97880-06016</a><br>Screw pan head            | <a href="#">Buy now</a> |
| 7   | <a href="#">92990-06600</a><br>Washer, plain (646)       | <a href="#">Buy now</a> |
| 8   | <a href="#">6L5-85540-M0</a><br>C.d.i. unit assembly     | <a href="#">Buy now</a> |
| 11  | <a href="#">90465-18147</a><br>Clamp                     | <a href="#">Buy now</a> |
| 12  | <a href="#">6L5-82550-00</a><br>Stop switch assembly     | <a href="#">Buy now</a> |
| 13  | <a href="#">97090-06012</a><br>Bolt(gh1)                 | <a href="#">Buy now</a> |

# Generator

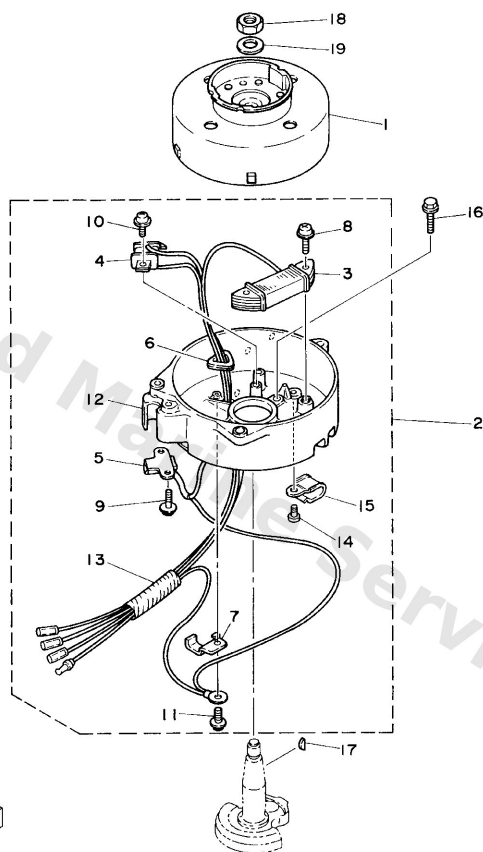


6L51100-4050

**B4**

| Ref | Part   |                         |
|-----|--|-------------------------|
| 1   | <a href="#">6L5-85550-M0</a><br>Rotor assembly       | <a href="#">Buy now</a> |
| 2   | <a href="#">6L5-85560-M1</a><br>Base assembly        | <a href="#">Buy now</a> |
| 3   | <a href="#">6E0-85520-70</a><br>Charge coil ass'y    | <a href="#">Buy now</a> |
| 4   | <a href="#">6L5-85595-M0</a><br>Coil, pulser         | <a href="#">Buy now</a> |
| 5   | <a href="#">6L5-85592-M0</a><br>Pulser coil assembly | <a href="#">Buy now</a> |
| 6   | <a href="#">6E0-81336-70</a><br>Grommet              | <a href="#">Buy now</a> |
| 7   | <a href="#">6E0-81328-70</a><br>Clamp                | <a href="#">Buy now</a> |
| 8   | <a href="#">90159-05038</a><br>Screw, With Washer    | <a href="#">Buy now</a> |
| 9   | <a href="#">90159-05037</a><br>Screw,w/washer        | <a href="#">Buy now</a> |
| 10  | <a href="#">90159-04036</a><br>Screw, pan head(6g8)  | <a href="#">Buy now</a> |
| 11  | <a href="#">90159-04035</a><br>Screw panhead (695)   | <a href="#">Buy now</a> |
| 12  | <a href="#">6L5-15771-01-94</a><br>Stay 1            | <a href="#">Buy now</a> |
| 13  | <a href="#">90446-10M01</a><br>Tube (6e5)            | <a href="#">Buy now</a> |
| 14  | <a href="#">97803-05008</a><br>Screw, pan head (7g3) | <a href="#">Buy now</a> |
| 15  | <a href="#">90465-10M34</a><br>Clamp(6I5)            | <a href="#">Buy now</a> |

# Generator

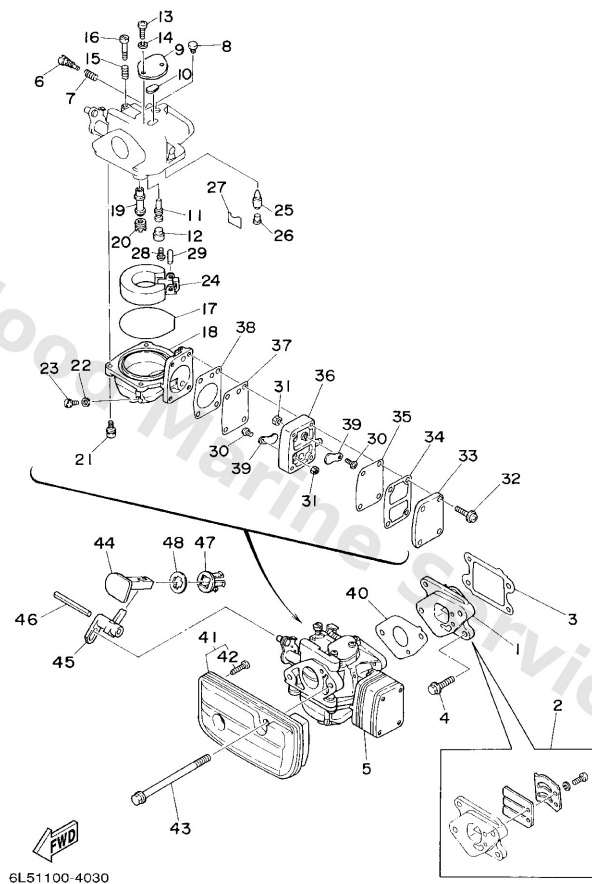


6L51100-4050

**B4**

| Ref | Part  |                         |
|-----|---|-------------------------|
| 16  | <a href="#">95895-06016</a><br>Bolt, flange deep recess | <a href="#">Buy now</a> |
| 17  | <a href="#">90280-04M06</a><br>Key, woodruff(6a1)       | <a href="#">Buy now</a> |
| 18  | <a href="#">90170-10113</a><br>Nut, crank shaft (650)   | <a href="#">Buy now</a> |
| 19  | <a href="#">90201-10126</a><br>Washer, plate (26h)      | <a href="#">Buy now</a> |

# Intake

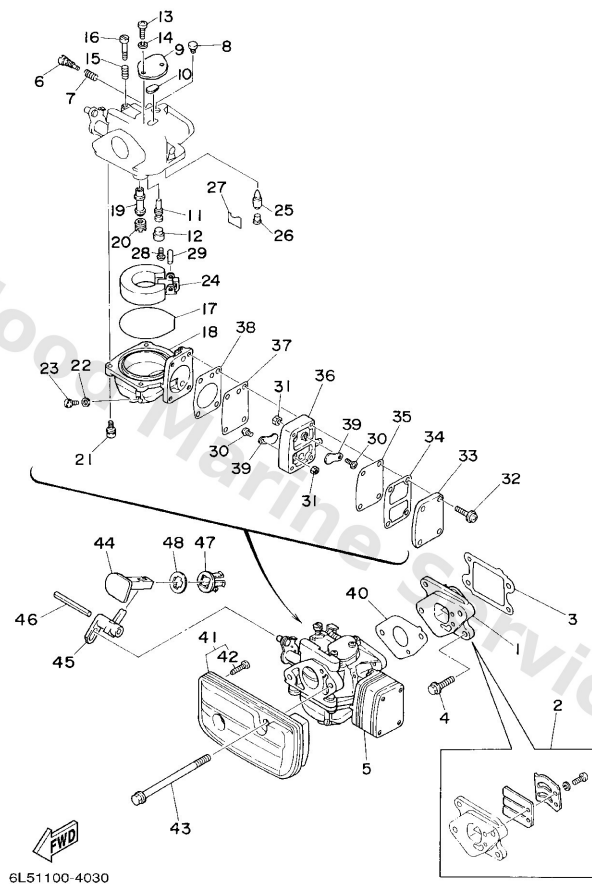


**B1**

| Ref | Part  |                         |
|-----|---|-------------------------|
| 1   | <a href="#">6L5-13610-02</a><br>Reed valve assembly     | <a href="#">Buy now</a> |
| 2   | <a href="#">6L5-W0004-02</a><br>Reed set                | <a href="#">Buy now</a> |
| 3   | <a href="#">6L5-13621-A2</a><br>Gasket, valve seat      | <a href="#">Buy now</a> |
| 4   | <a href="#">95895-06016</a><br>Bolt, flange deep recess | <a href="#">Buy now</a> |
| 5   | <a href="#">6L5-14301-03</a><br>Carburetor assembly 1   | <a href="#">Buy now</a> |
| 6   | <a href="#">679-14923-00</a><br>Screw, pilot            | <a href="#">Buy now</a> |
| 7   | <a href="#">679-14555-00</a><br>Spring                  | <a href="#">Buy now</a> |
| 8   | <a href="#">6G1-14966-00</a><br>Cap                     | <a href="#">Buy now</a> |
| 9   | <a href="#">6G1-14527-00</a><br>Plate                   | <a href="#">Buy now</a> |
| 10  | <a href="#">6G1-14126-00</a><br>Packing                 | <a href="#">Buy now</a> |
| 11  | <a href="#">6L5-14948-03</a><br>Jet (#40)               | <a href="#">Buy now</a> |
| 12  | <a href="#">676-14966-00</a><br>Rubber cap              | <a href="#">Buy now</a> |
| 13  | <a href="#">97880-04010</a><br>Screw, pan head (e56)    | <a href="#">Buy now</a> |
| 14  | <a href="#">92990-04100</a><br>Ybs67-4 washer, spring   | <a href="#">Buy now</a> |
| 15  | <a href="#">90501-10326</a><br>Spring coil(663)(carb)   | <a href="#">Buy now</a> |



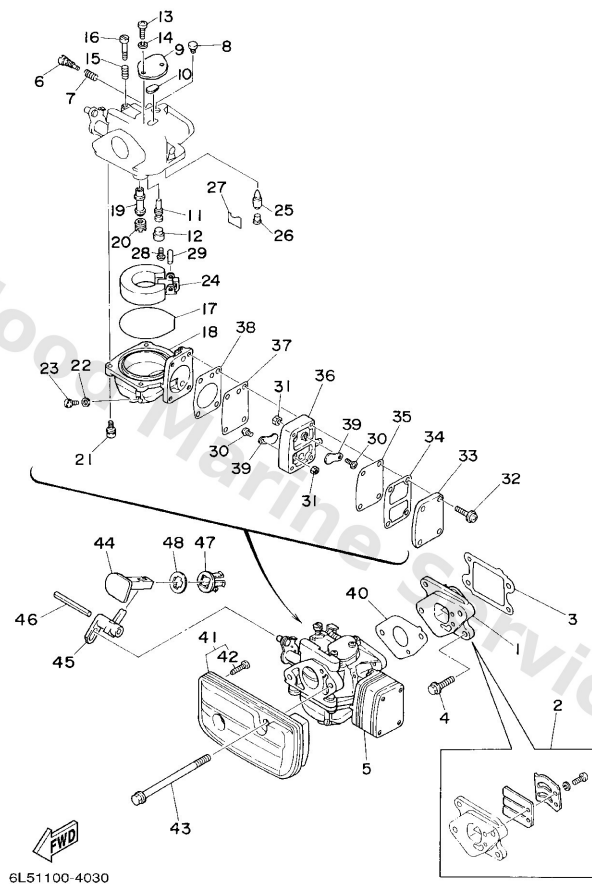
# Intake



**B1**

| Ref | Part  |                         |
|-----|---|-------------------------|
| 16  | <a href="#">63V-14523-00</a><br>Screw, stop           | <a href="#">Buy now</a> |
| 17  | <a href="#">6G1-14984-00</a><br>Gasket, float chamber | <a href="#">Buy now</a> |
| 18  | <a href="#">6G1-14980-01</a><br>Body, float chamber   | <a href="#">Buy now</a> |
| 19  | <a href="#">6L5-14947-01</a><br>Jet, needle           | <a href="#">Buy now</a> |
| 20  | <a href="#">676-14943-14</a><br>Jet, main (#68)       | <a href="#">Buy now</a> |
| 21  | <a href="#">97980-04114</a><br>Screw, pan head(ga5)   | <a href="#">Buy now</a> |
| 22  | <a href="#">6G1-14398-00</a><br>Washer                | <a href="#">Buy now</a> |
| 23  | <a href="#">6G1-14992-00</a><br>Screw, drain          | <a href="#">Buy now</a> |
| 24  | <a href="#">6G1-14985-00</a><br>Float comp.           | <a href="#">Buy now</a> |
| 25  | <a href="#">6G1-14546-00</a><br>Valve, needle         | <a href="#">Buy now</a> |
| 26  | <a href="#">676-14186-00</a><br>Pin, valve            | <a href="#">Buy now</a> |
| 27  | <a href="#">663-14159-00</a><br>Clip                  | <a href="#">Buy now</a> |
| 28  | <a href="#">98580-04008</a><br>Screw, pan head (713)  | <a href="#">Buy now</a> |
| 29  | <a href="#">688-14548-00</a><br>Pin, arm              | <a href="#">Buy now</a> |
| 30  | <a href="#">98580-03006</a><br>Screw, pan head(78g)   | <a href="#">Buy now</a> |

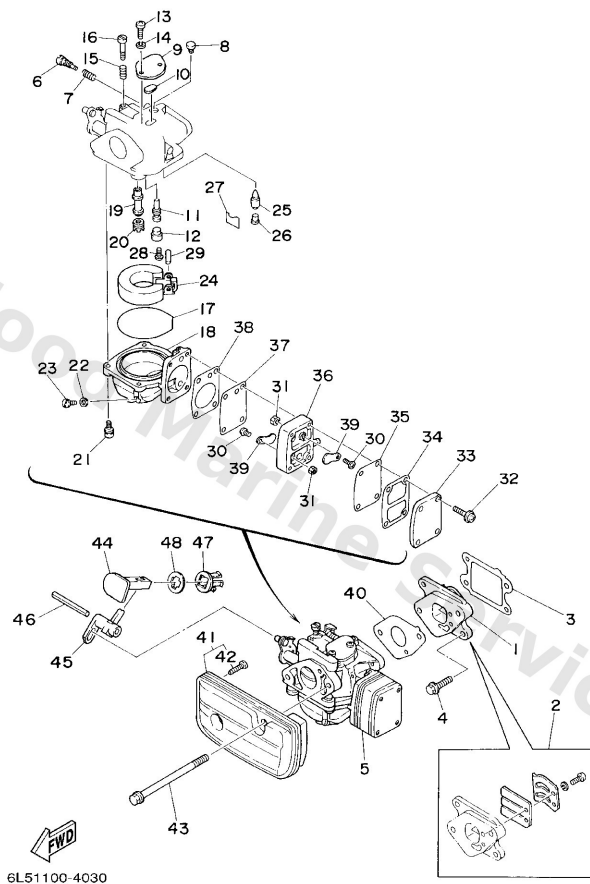
# Intake



**B1**

| Ref | Part  |                         |
|-----|---|-------------------------|
| 31  | <a href="#">95380-03600</a><br>Nut (6g8)                  | <a href="#">Buy now</a> |
| 32  | <a href="#">97980-04125</a><br>Screw, with washer         | <a href="#">Buy now</a> |
| 33  | <a href="#">6G1-24452-00</a><br>Cover, pump               | <a href="#">Buy now</a> |
| 34  | <a href="#">6G1-24432-00</a><br>Packing                   | <a href="#">Buy now</a> |
| 35  | <a href="#">6G1-24471-00</a><br>Diaphragm                 | <a href="#">Buy now</a> |
| 36  | <a href="#">6G1-24412-01</a><br>Body 1                    | <a href="#">Buy now</a> |
| 37  | <a href="#">6G1-24411-00</a><br>Diaphragm                 | <a href="#">Buy now</a> |
| 38  | <a href="#">6G1-24431-01</a><br>Gasket, fuel pump 1       | <a href="#">Buy now</a> |
| 39  | <a href="#">6L5-24421-00</a><br>Valve, check              | <a href="#">Buy now</a> |
| 40  | <a href="#">6L5-14198-A1</a><br>Gasket                    | <a href="#">Buy now</a> |
| 41  | <a href="#">6L5-14440-00</a><br>Silencer assembly, intake | <a href="#">Buy now</a> |
| 42  | <a href="#">97780-40716</a><br>Screw, tapping(6l5)        | <a href="#">Buy now</a> |
| 43  | <a href="#">95895-06095</a><br>Bolt, flange deep recess   | <a href="#">Buy now</a> |
| 44  | <a href="#">6L5-41271-20</a><br>Knob, choke               | <a href="#">Buy now</a> |
| 45  | <a href="#">6L5-41252-00</a><br>Lever, choke 1            | <a href="#">Buy now</a> |

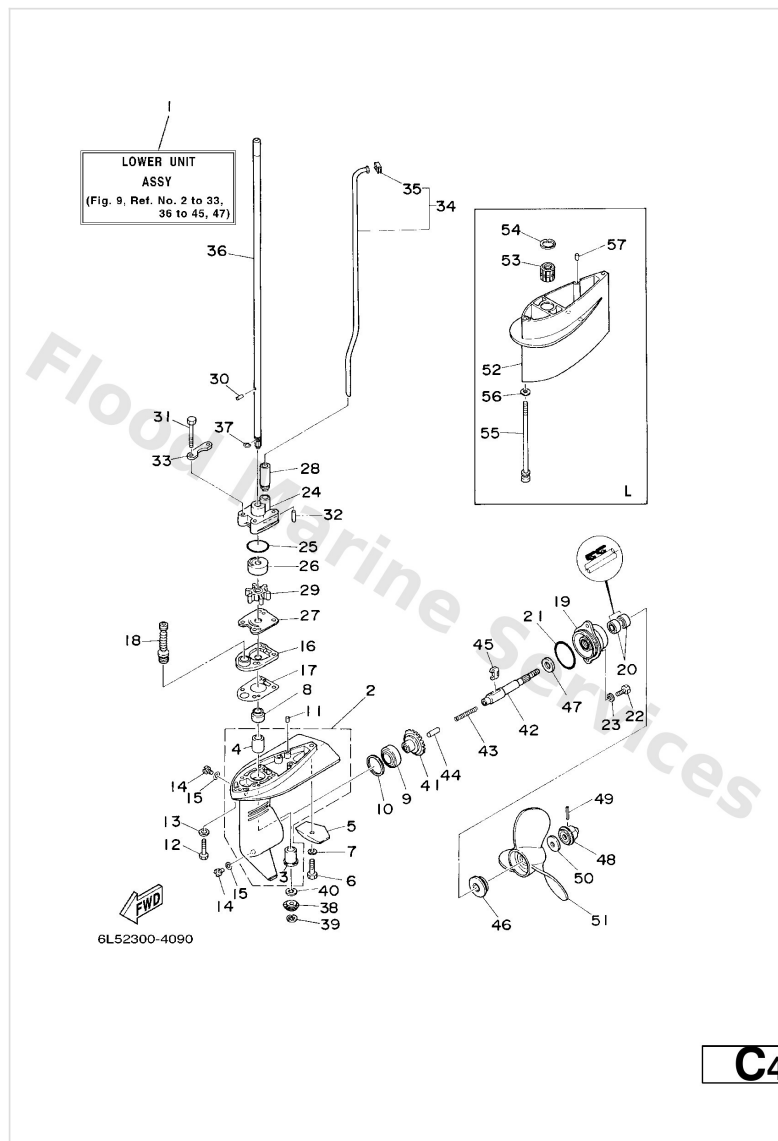
# Intake



**B1**

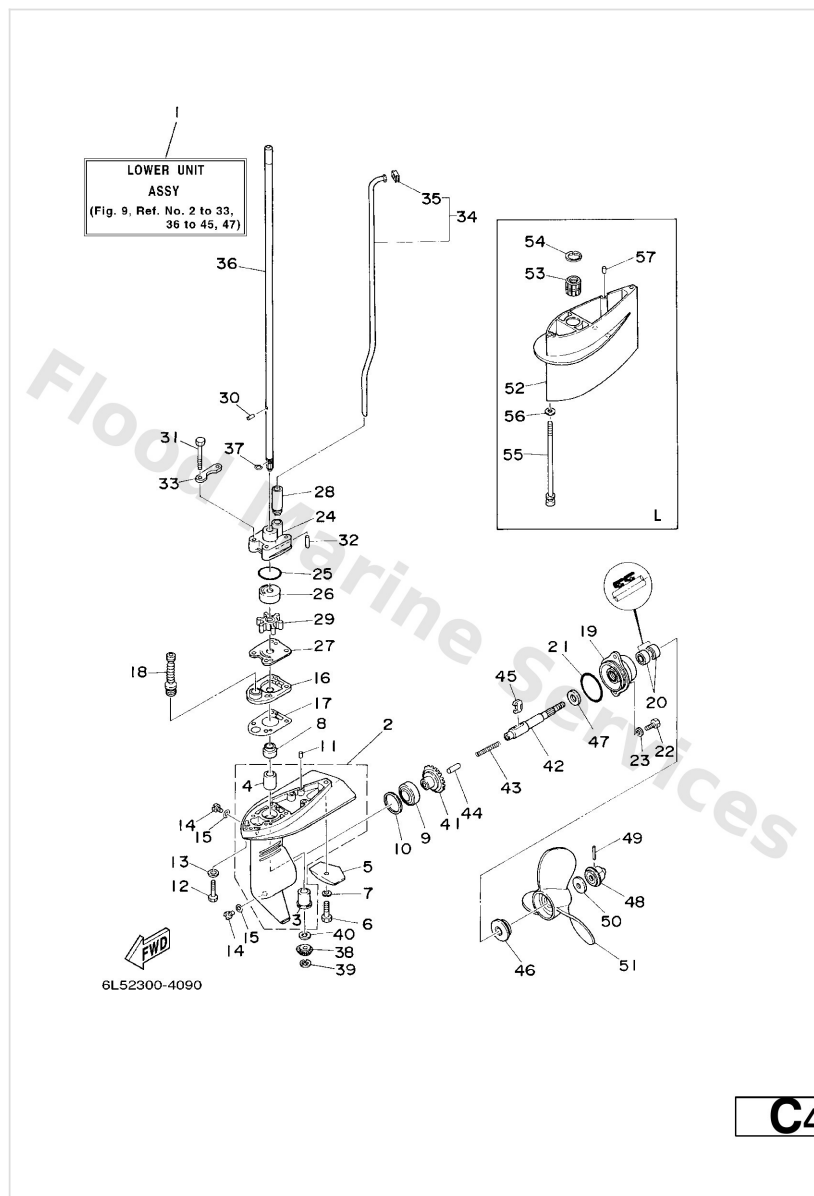
| Ref | Part   |                         |
|-----|--|-------------------------|
| 46  | <a href="#">91690-40048</a><br>Pin, spring (689) | <a href="#">Buy now</a> |
| 47  | <a href="#">689-41273-00</a><br>Grommet          | <a href="#">Buy now</a> |
| 48  | <a href="#">6J8-41274-00</a><br>Grommet 2        | <a href="#">Buy now</a> |

## Lower Casing. Drive



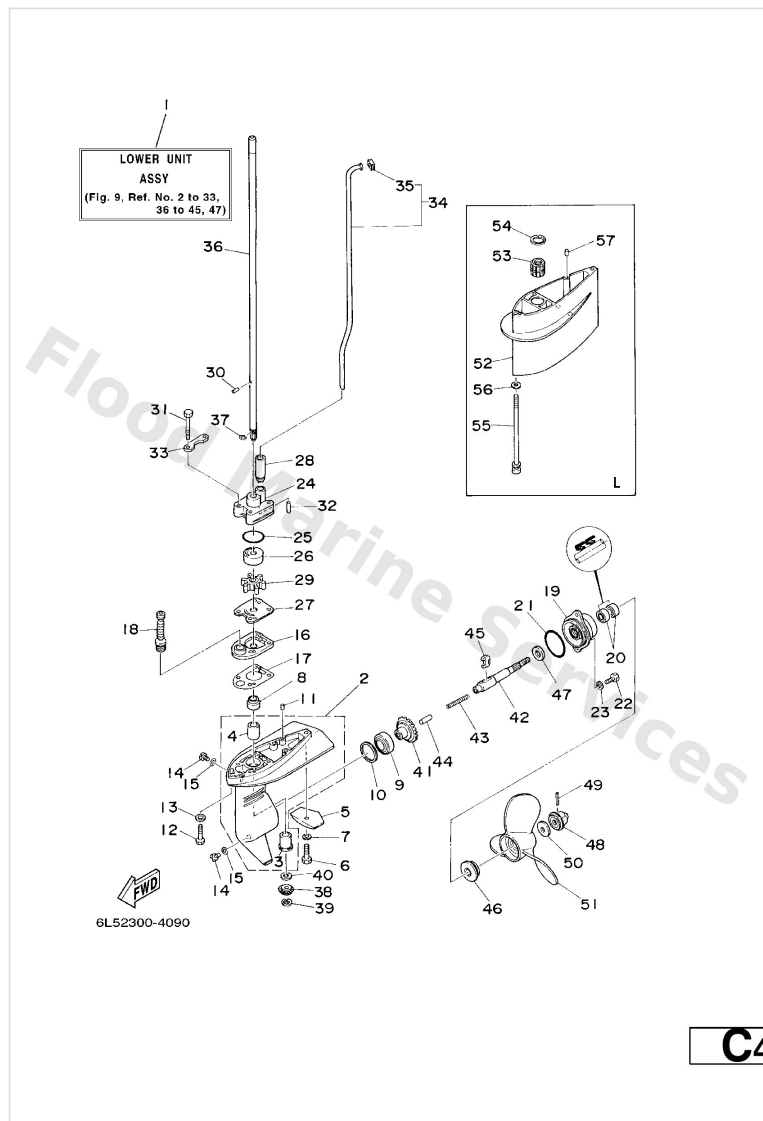
| Ref | Part   |                         |
|-----|--|-------------------------|
| 1   | <a href="#">6L5-45300-01-4D</a><br>Lower unit assembly<br>S    | <a href="#">Buy now</a> |
| 1   | <a href="#">6L5-45300-11-4D</a><br>Lower Unit assembly<br>L    | <a href="#">Buy now</a> |
| 2   | <a href="#">6L5-45311-00-4D</a><br>Casing, lower               | <a href="#">Buy now</a> |
| 3   | <a href="#">6L5-45317-09</a><br>Bushing, d/shaft 2 90381-09m08 | <a href="#">Buy now</a> |
| 4   | <a href="#">6L5-45316-09</a><br>Bushing, d/shaft 1 90380-09m23 | <a href="#">Buy now</a> |
| 5   | <a href="#">6L5-45251-03</a><br>Anode                          | <a href="#">Buy now</a> |
| 6   | <a href="#">90101-06M18</a><br>Bolt(6I5)<br>L                  | <a href="#">Buy now</a> |
| 6   | <a href="#">95895-06030</a><br>Bolt, flange deep recess<br>S   | <a href="#">Buy now</a> |
| 7   | <a href="#">92990-06300</a><br>Washer, tooth                   | <a href="#">Buy now</a> |
| 8   | <a href="#">93103-09M41</a><br>Oil seal                        | <a href="#">Buy now</a> |
| 9   | <a href="#">93316-003U0</a><br>Bearing, cylindrical(6I5)       | <a href="#">Buy now</a> |
| 10  | <a href="#">6L5-45567-00</a><br>Shim<br>UN                     | <a href="#">Buy now</a> |
| 57  | <a href="#">93604-12M07</a><br>Pin, dowel (688)<br>L           | <a href="#">Buy now</a> |
| 12  | <a href="#">97095-06030</a><br>Bolt(jf7)                       | <a href="#">Buy now</a> |
| 13  | <a href="#">92995-06600</a><br>Washer, plain (646)             | <a href="#">Buy now</a> |

## Lower Casing. Drive



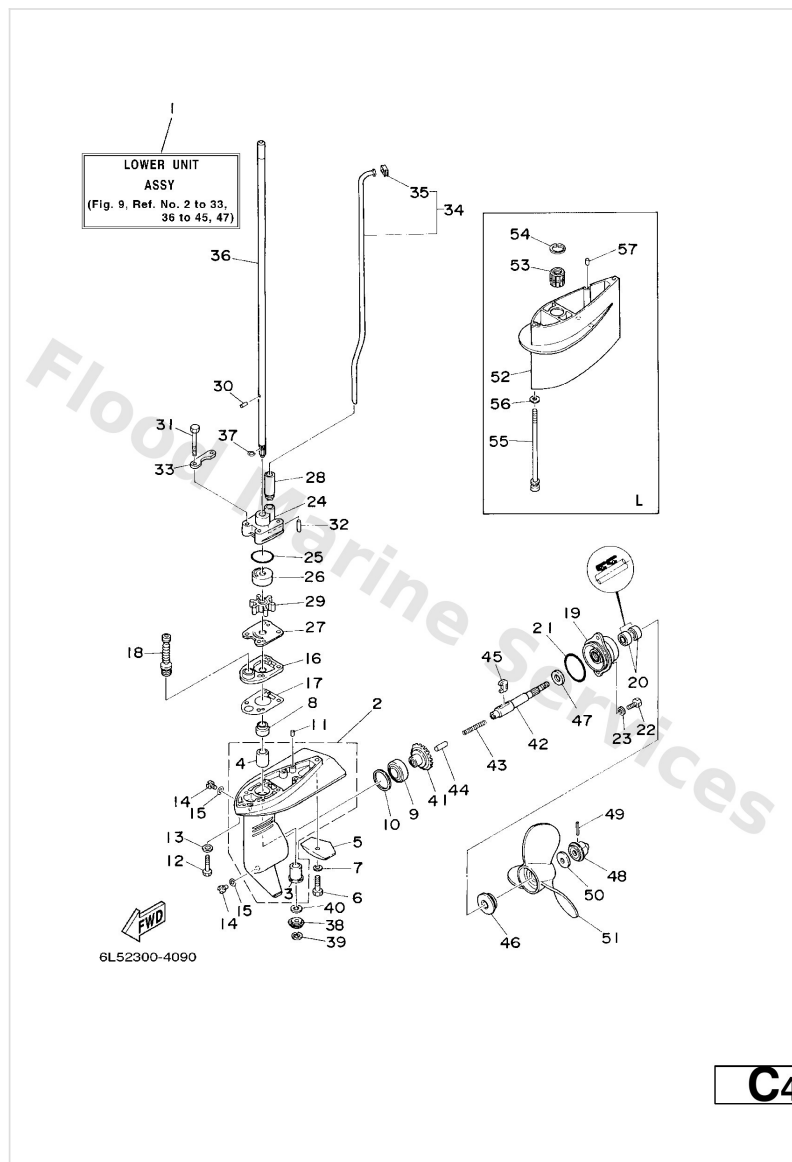
| Ref | Part   |                         |
|-----|--|-------------------------|
| 14  | <a href="#">90340-08002</a><br>Plug, straight screw      | <a href="#">Buy now</a> |
| 15  | <a href="#">90430-08020</a><br>Gasket                    | <a href="#">Buy now</a> |
| 16  | <a href="#">6L5-45321-00-5B</a><br>Plate                 | <a href="#">Buy now</a> |
| 17  | <a href="#">6L5-45315-A0</a><br>Packing, lower casing    | <a href="#">Buy now</a> |
| 18  | <a href="#">6L2-44147-00</a><br>Boot, shift rod          | <a href="#">Buy now</a> |
| 19  | <a href="#">6L5-45361-00-4D</a><br>Cap, lower casing     | <a href="#">Buy now</a> |
| 20  | <a href="#">93101-13M12</a><br>Oil seal                  | <a href="#">Buy now</a> |
| 21  | <a href="#">93210-48214</a><br>O-ring                    | <a href="#">Buy now</a> |
| 22  | <a href="#">97095-06016</a><br>Bolt, hexagon deep recess | <a href="#">Buy now</a> |
| 24  | <a href="#">6L5-44311-00</a><br>Housing, water pump      | <a href="#">Buy now</a> |
| 25  | <a href="#">93210-33M85</a><br>O-ring(615)               | <a href="#">Buy now</a> |
| 26  | <a href="#">6L5-44322-00</a><br>Insert, cartridge        | <a href="#">Buy now</a> |
| 27  | <a href="#">6L5-44323-00</a><br>Outer plate, cartridge   | <a href="#">Buy now</a> |
| 28  | <a href="#">6E0-44366-00</a><br>Damper, water seal 2     | <a href="#">Buy now</a> |
| 29  | <a href="#">6L5-44352-00</a><br>Impeller                 | <a href="#">Buy now</a> |

## Lower Casing. Drive



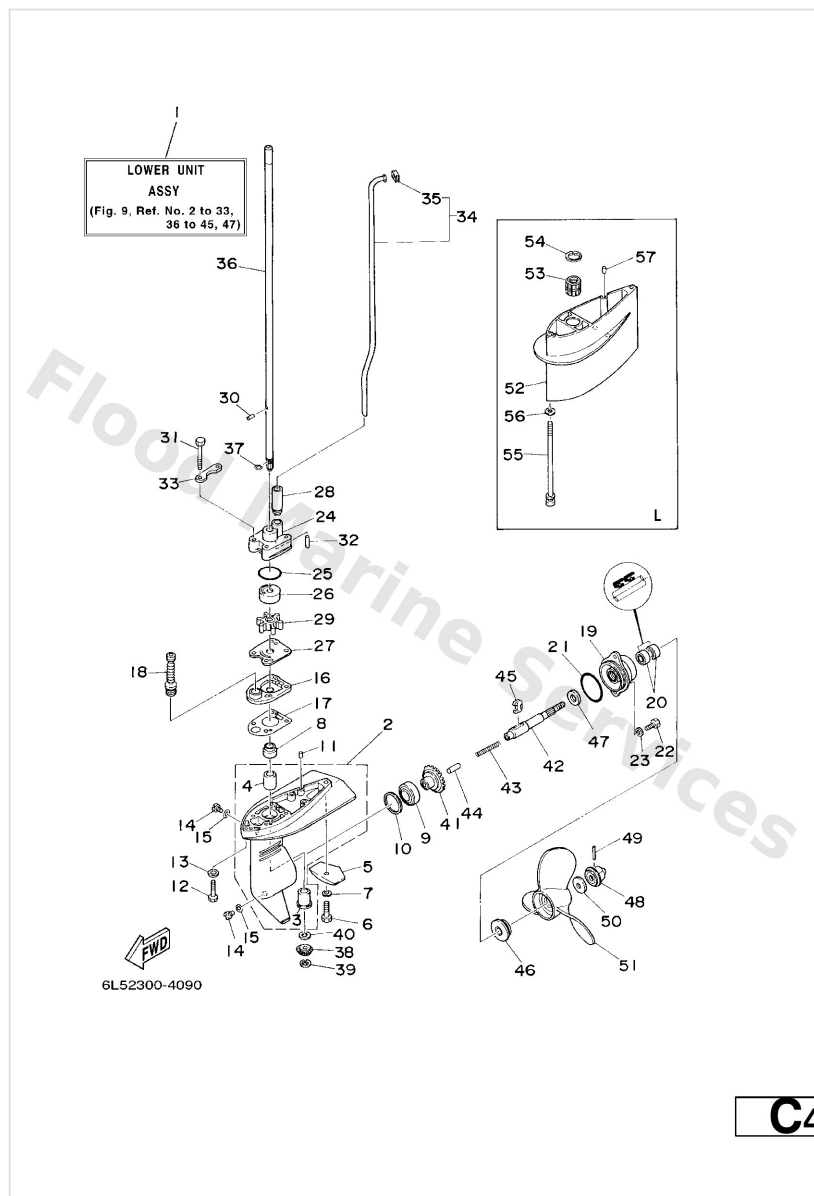
| Ref | Part   |                         |
|-----|--|-------------------------|
| 30  | <a href="#">93604-07M13</a><br>Pin, dowel(6I5)           | <a href="#">Buy now</a> |
| 31  | <a href="#">97095-06040</a><br>Bolt (682)                | <a href="#">Buy now</a> |
| 32  | <a href="#">93604-18080</a><br>Pin. dowel. (647)         | <a href="#">Buy now</a> |
| 33  | <a href="#">6L5-44328-00</a><br>Plate                    | <a href="#">Buy now</a> |
| 34  | <a href="#">6L5-44360-01</a><br>Water tube assembly<br>S | <a href="#">Buy now</a> |
| 34  | <a href="#">6L5-44360-11</a><br>Water Tube assembly<br>L | <a href="#">Buy now</a> |
| 35  | <a href="#">646-44365-00</a><br>Damper, water seal 1     | <a href="#">Buy now</a> |
| 36  | <a href="#">6L5-45511-00</a><br>Shaft, drive<br>S        | <a href="#">Buy now</a> |
| 36  | <a href="#">6L5-45511-10</a><br>Shaft, Drive<br>L        | <a href="#">Buy now</a> |
| 37  | <a href="#">90467-07M12</a><br>Clip(6I5)                 | <a href="#">Buy now</a> |
| 38  | <a href="#">6L5-45551-00</a><br>Pinion                   | <a href="#">Buy now</a> |
| 39  | <a href="#">99001-06600</a><br>Circlip(53I)              | <a href="#">Buy now</a> |
| 40  | <a href="#">6L5-45533-00</a><br>Shim<br>UR               | <a href="#">Buy now</a> |
| 40  | <a href="#">6L5-45533-10</a><br>Shim (t:2.1mm)<br>UR     | <a href="#">Buy now</a> |
| 40  | <a href="#">6L5-45533-20</a><br>Shim (t:2.2mm)<br>UR     | <a href="#">Buy now</a> |

## Lower Casing. Drive



| Ref | Part  |                         |
|-----|---|-------------------------|
| 40  | <a href="#">6L5-45533-30</a><br>Shim (t:2.3mm)<br>UR                    | <a href="#">Buy now</a> |
| 41  | <a href="#">6L5-45560-00</a><br>Gear                                    | <a href="#">Buy now</a> |
| 42  | <a href="#">6L5-45611-00</a><br>Shaft, propeller                        | <a href="#">Buy now</a> |
| 43  | <a href="#">90501-10064</a><br>Spring, compression 6164563600           | <a href="#">Buy now</a> |
| 44  | <a href="#">6L5-45635-00</a><br>Plunger, shift                          | <a href="#">Buy now</a> |
| 45  | <a href="#">6L5-45631-00</a><br>Clutch, dog                             | <a href="#">Buy now</a> |
| 46  | <a href="#">6L5-45987-01</a><br>Spacer 1                                | <a href="#">Buy now</a> |
| 47  | <a href="#">90201-13198</a><br>Washer 6474556600                        | <a href="#">Buy now</a> |
| 48  | <a href="#">6L5-45616-00</a><br>Nut, propeller                          | <a href="#">Buy now</a> |
| 49  | <a href="#">91490-25030</a><br>Pin, cotter(615)                         | <a href="#">Buy now</a> |
| 50  | <a href="#">90201-08M54</a><br>Washer, plate (6e5)                      | <a href="#">Buy now</a> |
| 51  | <a href="#">6L5-45943-00-EL</a><br>Propeller (3x7-1/4 x6 -bs)<br>UR     | <a href="#">Buy now</a> |
| 51  | <a href="#">6L5-45945-00-EL</a><br>Propeller (3x7-1/4"x7-1/4"-bs)<br>UR | <a href="#">Buy now</a> |
| 51  | <a href="#">6L5-45947-00-EL</a><br>Propeller (3x7-1/4"x8-1/4"-bs)<br>UR | <a href="#">Buy now</a> |
| 51  | <a href="#">6L5-45949-00-EL</a><br>Propeller (3x7-1/4 x5 -bs)<br>UR     | <a href="#">Buy now</a> |

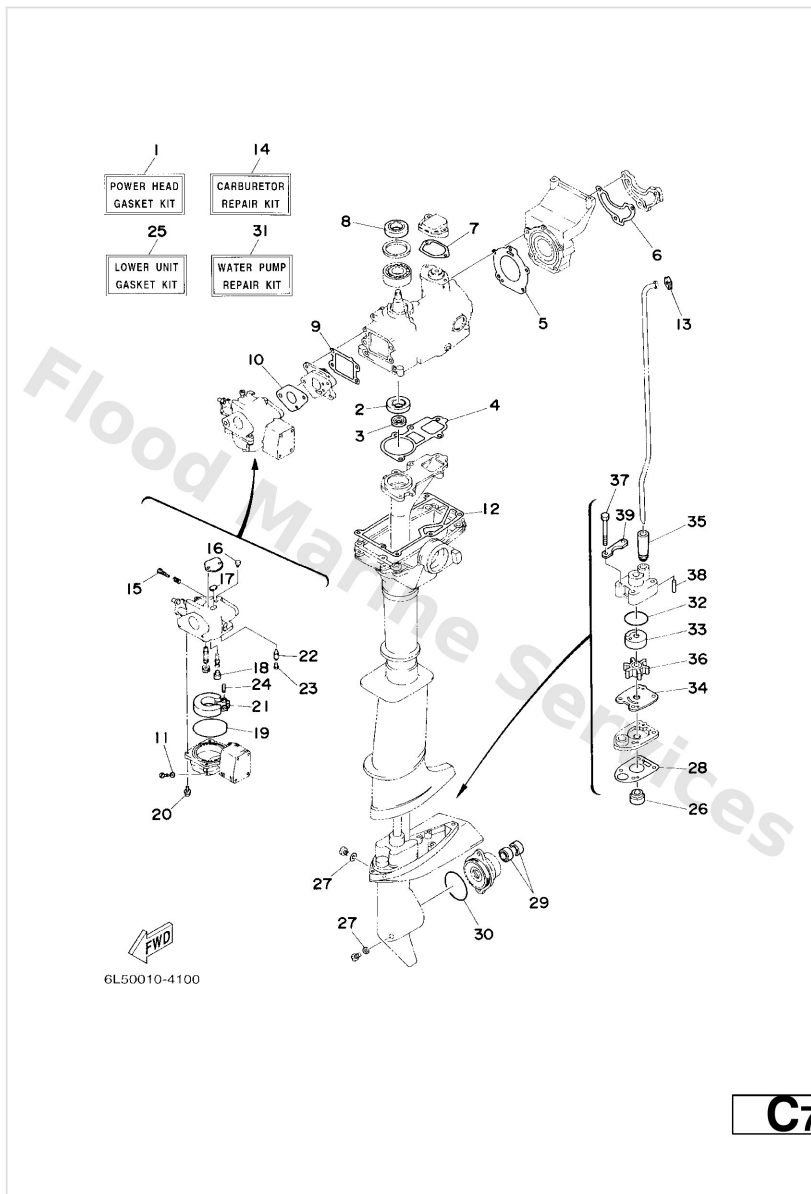
## Lower Casing. Drive



| Ref | Part  |                         |
|-----|---|-------------------------|
| 51  | <a href="#">6L5-45952-00-EL</a><br>Propeller (3x7-1/4"x5-1/2"-bs)<br>UR | <a href="#">Buy now</a> |
| 52  | <a href="#">6L5-45211-00-4D</a><br>Extension<br>L                       | <a href="#">Buy now</a> |
| 53  | <a href="#">6L5-45318-00</a><br>Bushing, drive shaft<br>L               | <a href="#">Buy now</a> |
| 54  | <a href="#">93420-22M03</a><br>Cir clip (6e0)<br>L                      | <a href="#">Buy now</a> |
| 56  | <a href="#">92990-06600</a><br>Washer, plain (646)<br>L                 | <a href="#">Buy now</a> |

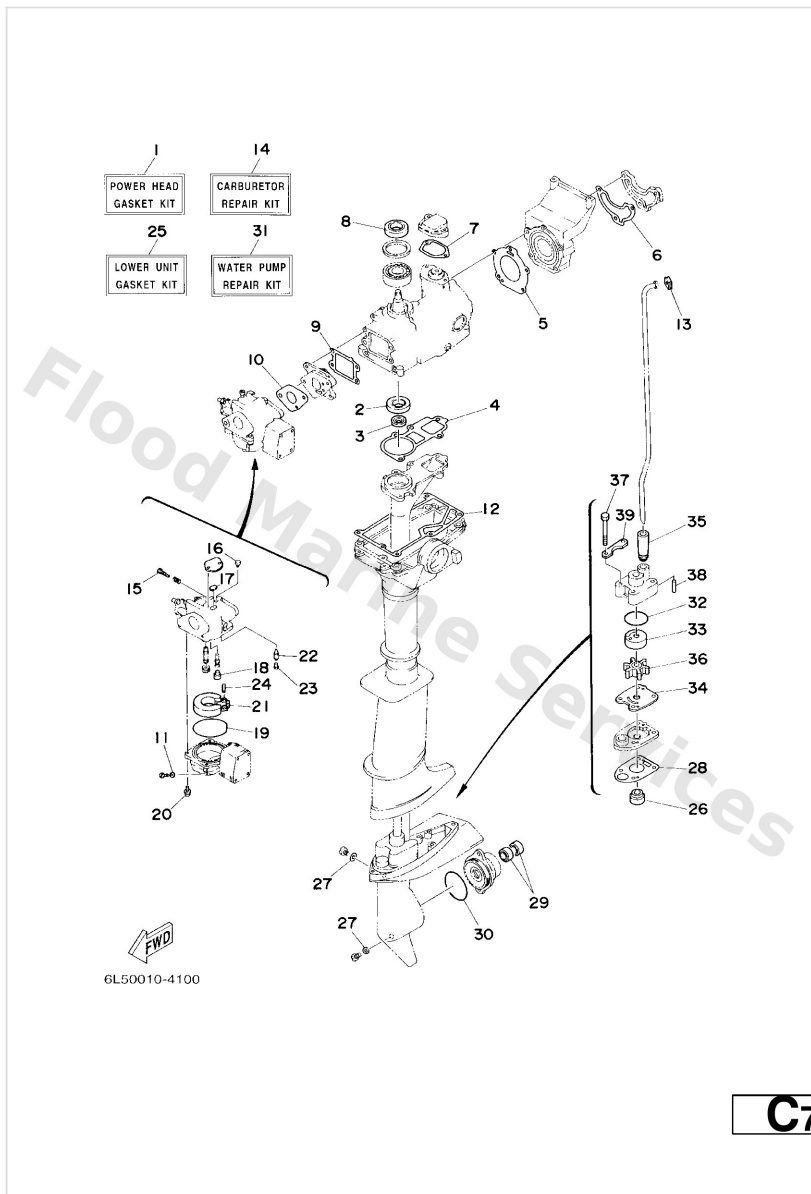


# Repair Kit



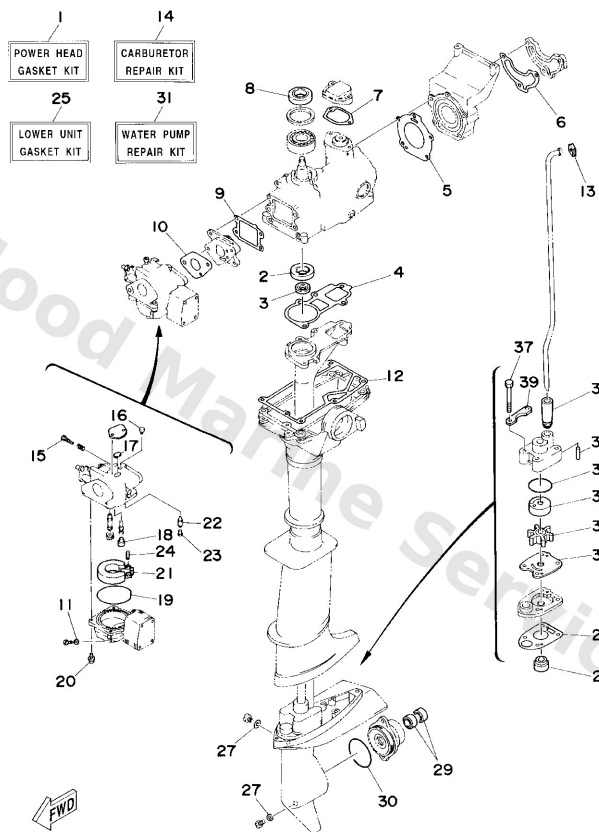
| Ref | Part   |                         |
|-----|--|-------------------------|
| 1   | <a href="#">6L5-W0001-A1</a><br>Power head gasket kit    | <a href="#">Buy now</a> |
| 2   | <a href="#">93101-20M29</a><br>Oil seal(6j1)             | <a href="#">Buy now</a> |
| 3   | <a href="#">93101-09M42</a><br>Oil seal(6l5)             | <a href="#">Buy now</a> |
| 4   | <a href="#">6L5-15369-A0</a><br>Gasket, oil seal housing | <a href="#">Buy now</a> |
| 5   | <a href="#">6L5-11181-A2</a><br>Gasket, cylinder head 1  | <a href="#">Buy now</a> |
| 6   | <a href="#">6L5-11193-A1</a><br>Gasket, head cover       | <a href="#">Buy now</a> |
| 7   | <a href="#">6L5-12414-A1</a><br>Gasket, cover            | <a href="#">Buy now</a> |
| 8   | <a href="#">93102-20M06</a><br>Oil seal(6j1)             | <a href="#">Buy now</a> |
| 9   | <a href="#">6L5-13621-A2</a><br>Gasket, valve seat       | <a href="#">Buy now</a> |
| 10  | <a href="#">6L5-14198-A1</a><br>Gasket                   | <a href="#">Buy now</a> |
| 11  | <a href="#">6G1-14398-00</a><br>Washer                   | <a href="#">Buy now</a> |
| 12  | <a href="#">6L5-45113-A1</a><br>Gasket, upper casing     | <a href="#">Buy now</a> |
| 13  | <a href="#">646-44365-00</a><br>Damper, water seal 1     | <a href="#">Buy now</a> |
| 14  | <a href="#">6G1-W0093-00</a><br>Carburetor repair kit    | <a href="#">Buy now</a> |
| 15  | <a href="#">679-14923-00</a><br>Screw, pilot             | <a href="#">Buy now</a> |

# Repair Kit



| Ref | Part  |                         |
|-----|---|-------------------------|
| 16  | <a href="#">6G1-14966-00</a><br>Cap                   | <a href="#">Buy now</a> |
| 17  | <a href="#">6G1-14126-00</a><br>Packing               | <a href="#">Buy now</a> |
| 18  | <a href="#">676-14966-00</a><br>Rubber cap            | <a href="#">Buy now</a> |
| 19  | <a href="#">6G1-14984-00</a><br>Gasket, float chamber | <a href="#">Buy now</a> |
| 20  | <a href="#">97980-04114</a><br>Screw, pan head(ga5)   | <a href="#">Buy now</a> |
| 21  | <a href="#">6G1-14985-00</a><br>Float comp.           | <a href="#">Buy now</a> |
| 22  | <a href="#">6G1-14546-00</a><br>Valve, needle         | <a href="#">Buy now</a> |
| 23  | <a href="#">676-14186-00</a><br>Pin, valve            | <a href="#">Buy now</a> |
| 24  | <a href="#">688-14548-00</a><br>Pin, arm              | <a href="#">Buy now</a> |
| 25  | <a href="#">6L5-W0001-21</a><br>10 -                  | <a href="#">Buy now</a> |
| 26  | <a href="#">93103-09M41</a><br>Oil seal               | <a href="#">Buy now</a> |
| 27  | <a href="#">90430-08020</a><br>Gasket                 | <a href="#">Buy now</a> |
| 28  | <a href="#">6L5-45315-A0</a><br>Packing, lower casing | <a href="#">Buy now</a> |
| 29  | <a href="#">93101-13M12</a><br>Oil seal               | <a href="#">Buy now</a> |
| 30  | <a href="#">93210-48214</a><br>O-ring                 | <a href="#">Buy now</a> |

# Repair Kit

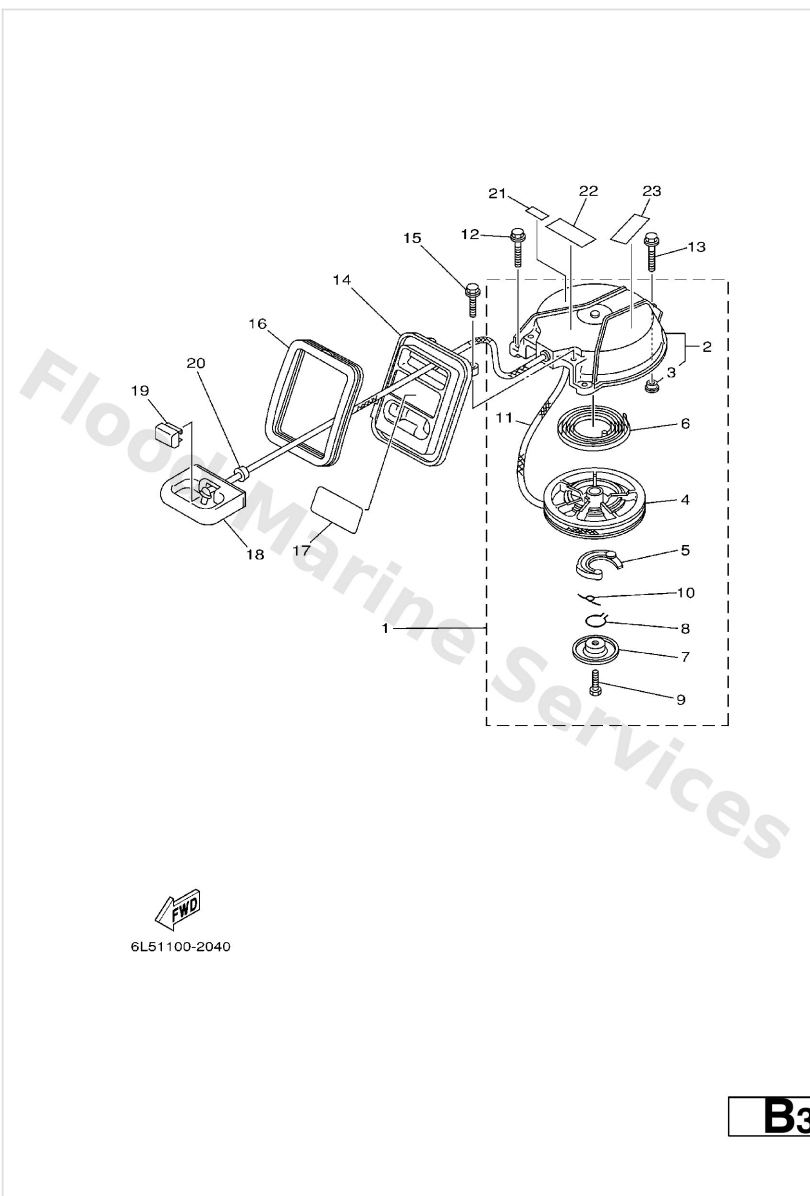


6L50010-4100

**C7**

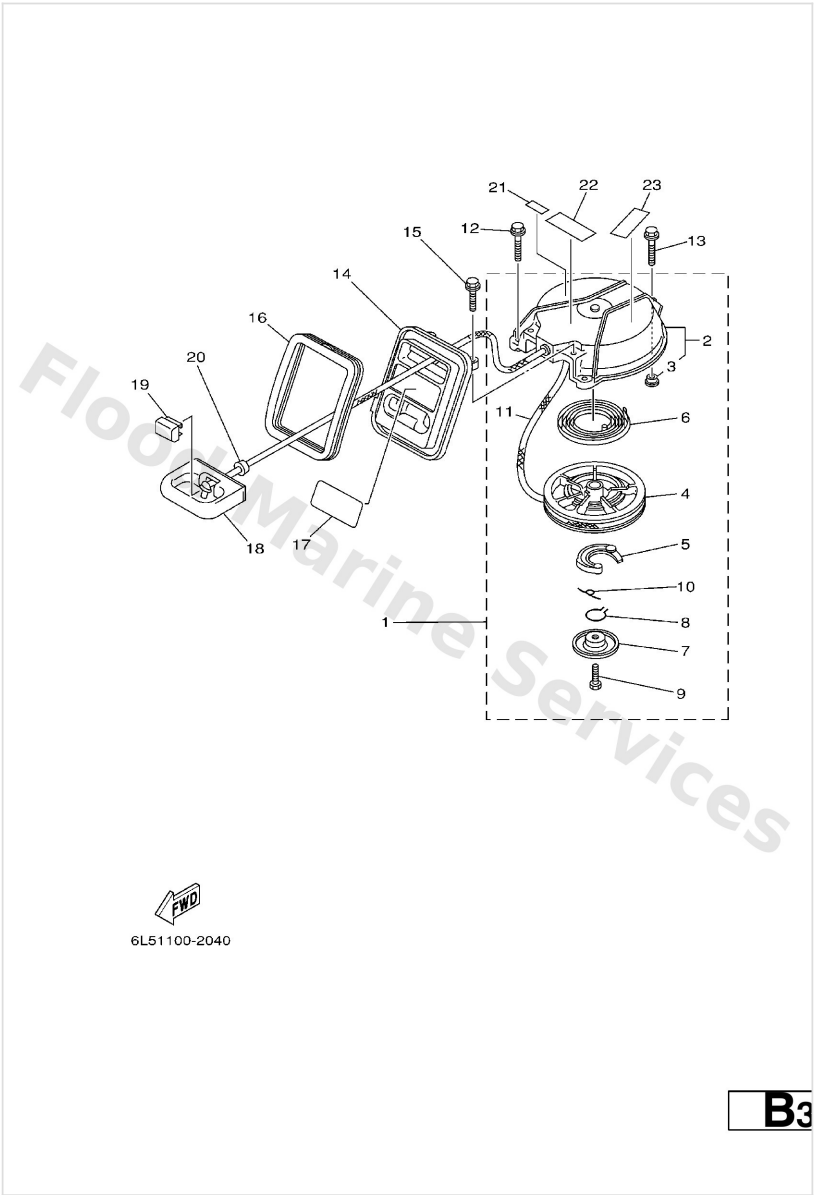
| Ref | Part   |                         |
|-----|--|-------------------------|
| 31  | <a href="#">6L5-W0078-00</a><br>Water pump repair kit  | <a href="#">Buy now</a> |
| 32  | <a href="#">93210-33M85</a><br>O-ring(615)             | <a href="#">Buy now</a> |
| 33  | <a href="#">6L5-44322-00</a><br>Insert, cartridge      | <a href="#">Buy now</a> |
| 34  | <a href="#">6L5-44323-00</a><br>Outer plate, cartridge | <a href="#">Buy now</a> |
| 35  | <a href="#">6E0-44366-00</a><br>Damper, water seal 2   | <a href="#">Buy now</a> |
| 36  | <a href="#">6L5-44352-00</a><br>Impeller               | <a href="#">Buy now</a> |
| 37  | <a href="#">97095-06040</a><br>Bolt (682)              | <a href="#">Buy now</a> |
| 38  | <a href="#">93604-18080</a><br>Pin. dowel. (647)       | <a href="#">Buy now</a> |
| 39  | <a href="#">6L5-44328-00</a><br>Plate                  | <a href="#">Buy now</a> |

# Starter



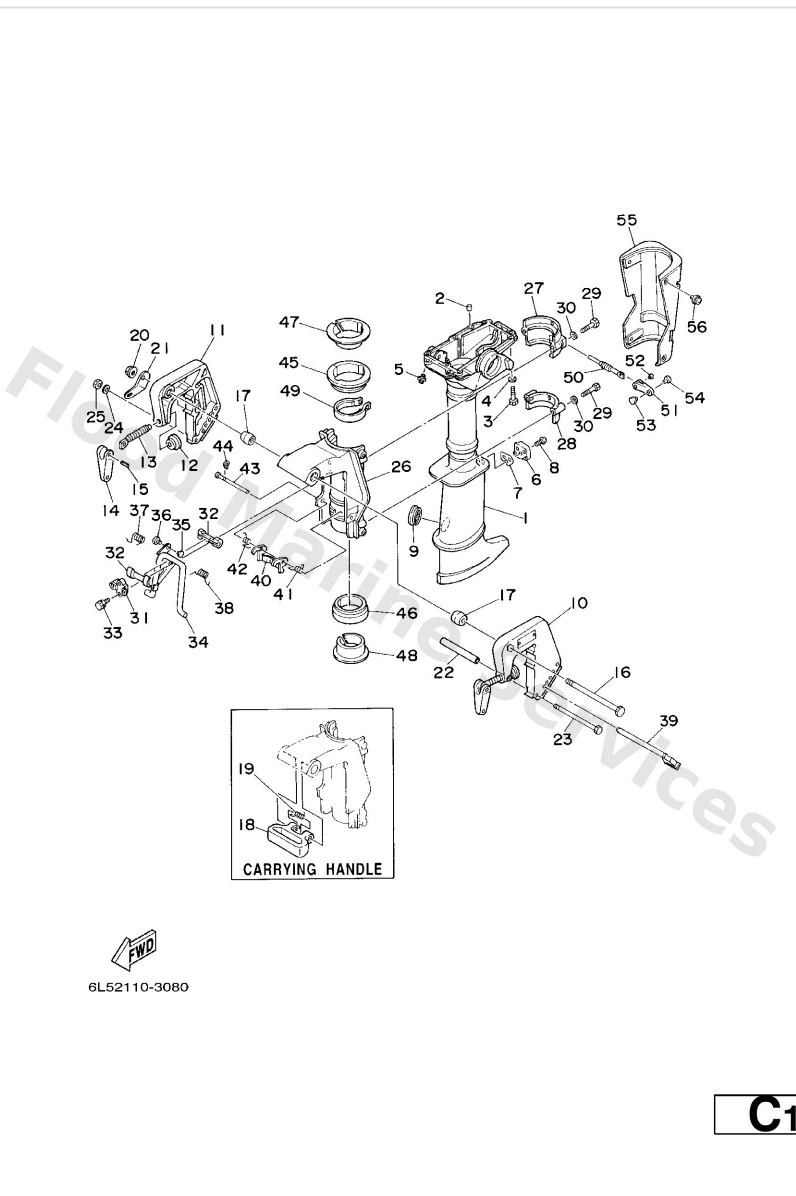
| Ref | Part  |                         |
|-----|---|-------------------------|
| 1   | <a href="#">6L5-15710-00</a><br>Starter assembly        | <a href="#">Buy now</a> |
| 2   | <a href="#">6L5-15711-00</a><br>Case, starter           | <a href="#">Buy now</a> |
| 3   | <a href="#">90387-06M70</a><br>Collar (6h5)             | <a href="#">Buy now</a> |
| 4   | <a href="#">6L5-15714-00</a><br>Drum, sheave            | <a href="#">Buy now</a> |
| 5   | <a href="#">6L5-15741-00</a><br>Pawl, drive             | <a href="#">Buy now</a> |
| 6   | <a href="#">6L5-15713-00</a><br>Spring, starter         | <a href="#">Buy now</a> |
| 7   | <a href="#">6L5-15716-00</a><br>Plate, drive            | <a href="#">Buy now</a> |
| 8   | <a href="#">6A1-15705-00</a><br>Spring, drive pawl      | <a href="#">Buy now</a> |
| 9   | <a href="#">97313-06012</a><br>Bolt(gh1)                | <a href="#">Buy now</a> |
| 10  | <a href="#">6A1-15767-00</a><br>Spring, return          | <a href="#">Buy now</a> |
| 11  | <a href="#">*</a><br>item_description                   | <a href="#">Buy now</a> |
| 12  | <a href="#">95895-06020</a><br>Bolt, flange(jk3)        | <a href="#">Buy now</a> |
| 13  | <a href="#">95895-06035</a><br>Bolt, flange(4nx)        | <a href="#">Buy now</a> |
| 14  | <a href="#">6L5-15758-00-98</a><br>Guide, rope          | <a href="#">Buy now</a> |
| 15  | <a href="#">95895-06016</a><br>Bolt, flange deep recess | <a href="#">Buy now</a> |

Starter



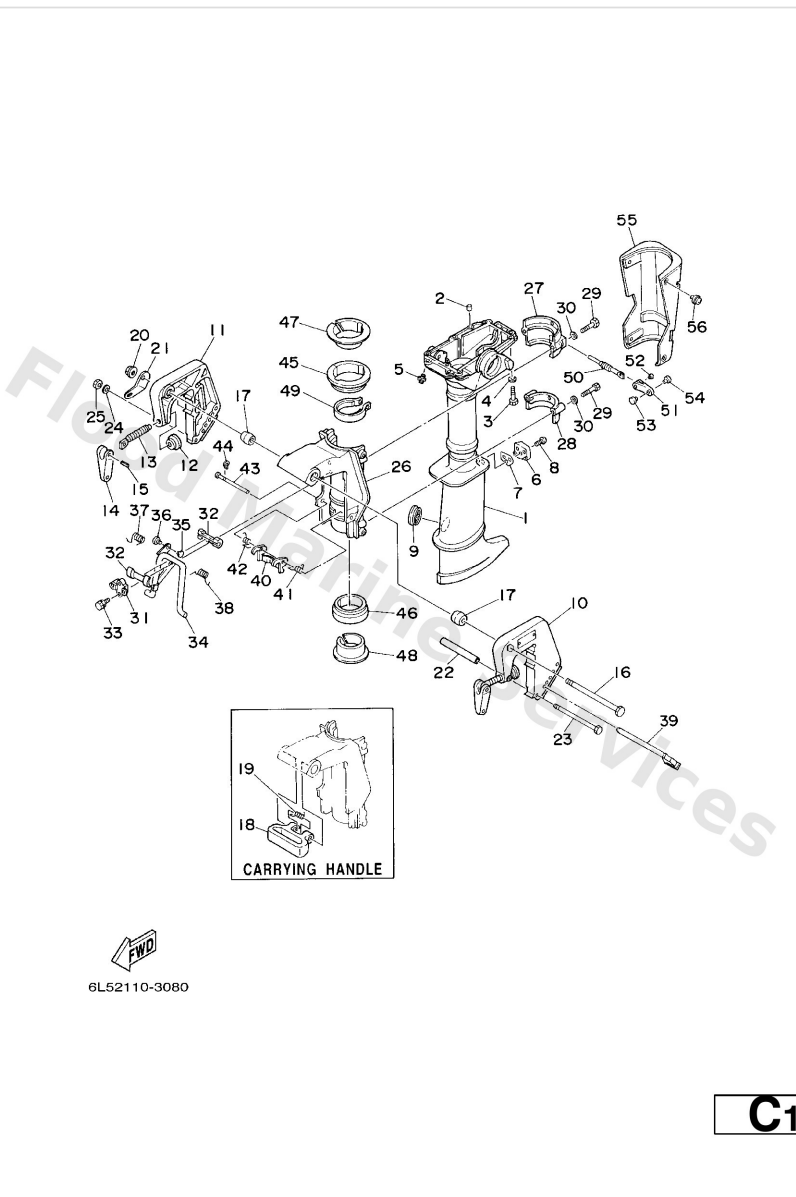
| Ref | Part  |                         |
|-----|---|-------------------------|
| 16  | <a href="#">6L5-15761-00</a><br>Seal, rubber 1  | <a href="#">Buy now</a> |
| 17  | <a href="#">6L5-42677-10</a><br>Graphic, front  | <a href="#">Buy now</a> |
| 18  | <a href="#">6L5-15755-00</a><br>Handle, starter | <a href="#">Buy now</a> |
| 19  | <a href="#">6L5-15779-20</a><br>Cover           | <a href="#">Buy now</a> |
| 20  | <a href="#">6L5-15789-00</a><br>Damper          | <a href="#">Buy now</a> |
| 21  | <a href="#">6H8-42791-10</a><br>Mark 1          | <a href="#">Buy now</a> |
| 22  | <a href="#">6A1-83625-41</a><br>Mark 5          | <a href="#">Buy now</a> |
| 23  | <a href="#">6A1-83625-51</a><br>Mark 5          | <a href="#">Buy now</a> |

## Upper Casing . Bracket



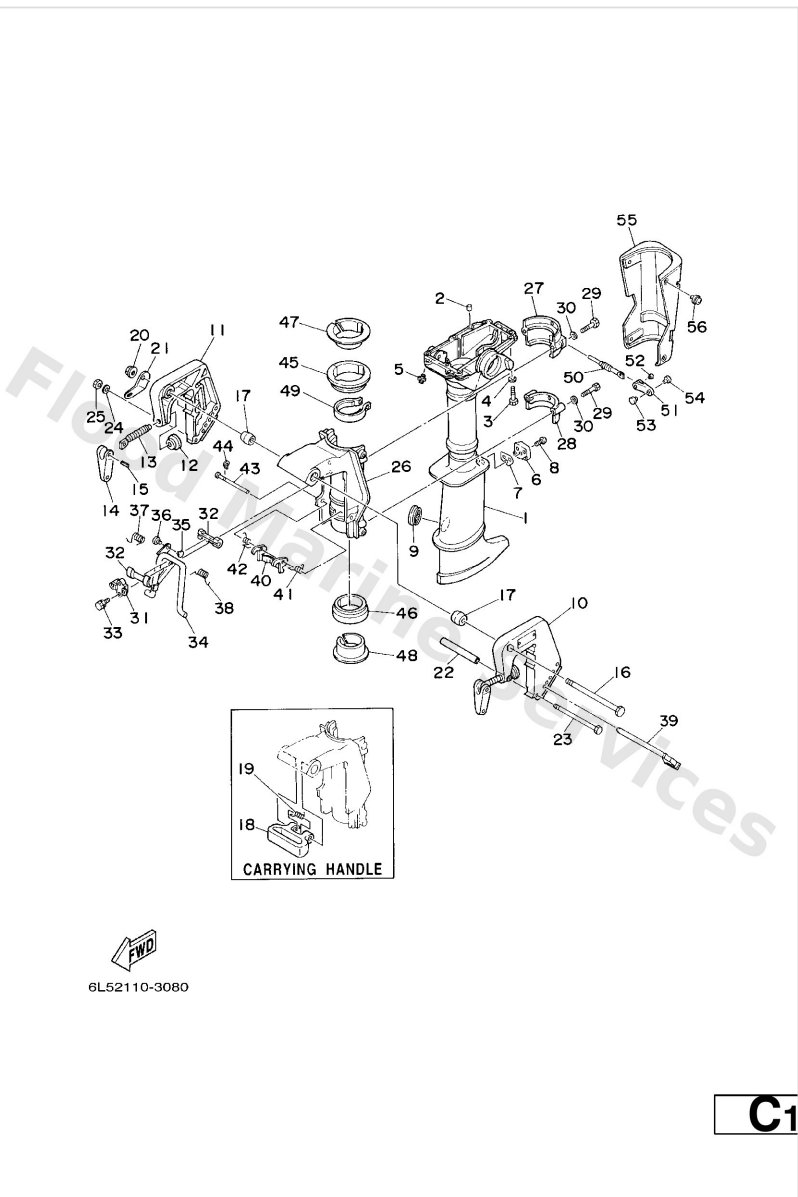
| Ref | Part   |                         |
|-----|--|-------------------------|
| 1   | <a href="#">6L5-45111-02-4D</a><br>Casing, upper         | <a href="#">Buy now</a> |
| 2   | <a href="#">93604-12M07</a><br>Pin, dowel (688)          | <a href="#">Buy now</a> |
| 3   | <a href="#">97095-06030</a><br>Bolt(jf7)                 | <a href="#">Buy now</a> |
| 4   | <a href="#">92995-06600</a><br>Washer, plain (646)       | <a href="#">Buy now</a> |
| 5   | <a href="#">93700-06M03</a><br>Nipple, grease(6a1)       | <a href="#">Buy now</a> |
| 6   | <a href="#">6L5-45152-00</a><br>Cover, upper casing 2    | <a href="#">Buy now</a> |
| 7   | <a href="#">6L5-45115-A0</a><br>Gasket,upper casing 3    | <a href="#">Buy now</a> |
| 8   | <a href="#">90149-05M08</a><br>Ybs53-525 screw,flat head | <a href="#">Buy now</a> |
| 9   | <a href="#">647-45151-01</a><br>Cover, upper casing      | <a href="#">Buy now</a> |
| 10  | <a href="#">6L5-43111-01-4D</a><br>Bracket Clamp 1       | <a href="#">Buy now</a> |
| 11  | <a href="#">6L5-43112-00-4D</a><br>Bracket Clamp 2       | <a href="#">Buy now</a> |
| 12  | <a href="#">620-43114-00</a><br>Pad, transom clamp       | <a href="#">Buy now</a> |
| 13  | <a href="#">6E0-43116-01</a><br>Screw, transom clamp     | <a href="#">Buy now</a> |
| 14  | <a href="#">6E0-43118-01</a><br>Handle, transom clamp    | <a href="#">Buy now</a> |
| 15  | <a href="#">90243-04M01</a><br>Pin(6a1)                  | <a href="#">Buy now</a> |

# Upper Casing . Bracket



| Ref | Part  |                         |
|-----|---|-------------------------|
| 16  | <a href="#">90101-08M10</a><br>Bolt(6I5)              | <a href="#">Buy now</a> |
| 17  | <a href="#">6G1-43136-00</a><br>Piece, friction       | <a href="#">Buy now</a> |
| 18  | <a href="#">6L5-42121-00</a><br>Bracket               | <a href="#">Buy now</a> |
| 19  | <a href="#">90508-16M30</a><br>Spring, torsion(6I5)   | <a href="#">Buy now</a> |
| 20  | <a href="#">90185-08057</a><br>Nut, nylon (6J8)       | <a href="#">Buy now</a> |
| 21  | <a href="#">6A1-43113-01</a><br>Plate, clamp bracket  | <a href="#">Buy now</a> |
| 22  | <a href="#">90387-06M11</a><br>Collar                 | <a href="#">Buy now</a> |
| 23  | <a href="#">90101-06335</a><br>Bolt, hexagon (624)    | <a href="#">Buy now</a> |
| 24  | <a href="#">92990-06600</a><br>Washer, plain (646)    | <a href="#">Buy now</a> |
| 25  | <a href="#">95380-06600</a><br>Nut(661)               | <a href="#">Buy now</a> |
| 26  | <a href="#">6L5-43311-01-4D</a><br>Bracket, swivel 1  | <a href="#">Buy now</a> |
| 27  | <a href="#">6L5-44511-00-4D</a><br>Cover, upper mount | <a href="#">Buy now</a> |
| 28  | <a href="#">6L5-44553-00-4D</a><br>Cover, lower mount | <a href="#">Buy now</a> |
| 29  | <a href="#">97095-06035</a><br>Bolt(j52)              | <a href="#">Buy now</a> |
| 31  | <a href="#">6E0-43313-00-94</a><br>Bracket, swivel 3  | <a href="#">Buy now</a> |

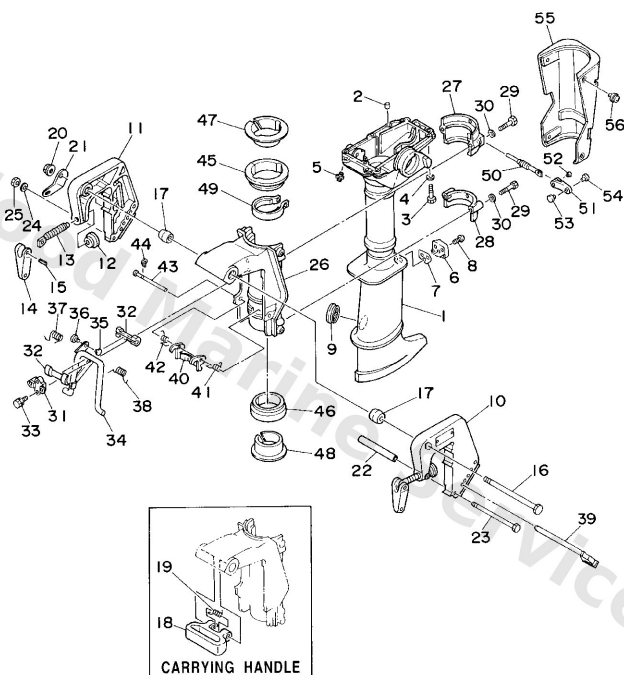
# Upper Casing . Bracket



| Ref | Part   |                         |
|-----|--|-------------------------|
| 32  | <a href="#">620-43189-00</a><br>Bushing              | <a href="#">Buy now</a> |
| 33  | <a href="#">95895-06020</a><br>Bolt, flange(jk3)     | <a href="#">Buy now</a> |
| 34  | <a href="#">6L5-43181-00</a><br>Lever, tilt stop 1   | <a href="#">Buy now</a> |
| 35  | <a href="#">6L5-44196-20</a><br>Indicator 3          | <a href="#">Buy now</a> |
| 36  | <a href="#">6L5-44197-20</a><br>Indicator 4          | <a href="#">Buy now</a> |
| 37  | <a href="#">90508-16020</a><br>Spring 6474319800     | <a href="#">Buy now</a> |
| 38  | <a href="#">90508-16021</a><br>Spring 6474318800     | <a href="#">Buy now</a> |
| 39  | <a href="#">6L5-43160-00</a><br>Tilt rod assembly    | <a href="#">Buy now</a> |
| 40  | <a href="#">6L5-43614-00</a><br>Plate, tilt lock     | <a href="#">Buy now</a> |
| 41  | <a href="#">90508-08M26</a><br>Spring, torsion(6l5)  | <a href="#">Buy now</a> |
| 42  | <a href="#">90508-08M27</a><br>Spring, torsion(6l5)  | <a href="#">Buy now</a> |
| 43  | <a href="#">6L5-43659-00</a><br>Shaft, reverse lock  | <a href="#">Buy now</a> |
| 44  | <a href="#">99080-05600</a><br>Circlip(22k)          | <a href="#">Buy now</a> |
| 45  | <a href="#">6L5-42537-00</a><br>Bushing, pivot shaft | <a href="#">Buy now</a> |
| 46  | <a href="#">6L5-42538-00</a><br>Bushing, pivot shaft | <a href="#">Buy now</a> |



## Upper Casing . Bracket



FWD  
6L52110-3080

**C1**

| Ref | Part   |                         |
|-----|--|-------------------------|
| 47  | <a href="#">6L5-42539-00</a><br>Bushing, pivot shaft   | <a href="#">Buy now</a> |
| 48  | <a href="#">6L5-42549-00</a><br>Bushing, pivot shaft   | <a href="#">Buy now</a> |
| 49  | <a href="#">6E0-42528-03</a><br>Plate, friction        | <a href="#">Buy now</a> |
| 50  | <a href="#">6L5-42529-01</a><br>Screw, friction piece  | <a href="#">Buy now</a> |
| 51  | <a href="#">6L5-42561-00</a><br>Knob, steering lock    | <a href="#">Buy now</a> |
| 52  | <a href="#">90266-04M05</a><br>Rivet(6l5)              | <a href="#">Buy now</a> |
| 55  | <a href="#">6L5-43318-11</a><br>Cover                  | <a href="#">Buy now</a> |
| 56  | <a href="#">90159-06M10</a><br>Screw, with washer(6l5) | <a href="#">Buy now</a> |

# Disclaimer

This document is provided for convenience only. It is **not** an official Yamaha publication and is **not supplied, endorsed, or approved** by Yamaha Motor Co., Ltd.

Reasonable efforts are made to keep information accurate; however diagrams, part references, supersessions, descriptions, and applicability may contain errors or omissions. Specifications and part availability may change without notice.

You are responsible for confirming the correct parts for your engine (including model code, year, serial range, and any superseded part numbers) before ordering or fitting.