



# Yamaha 4ACMH 2003

## Parts Manual

[www.floodmarine.co.uk](http://www.floodmarine.co.uk)

+44 2882 246 539

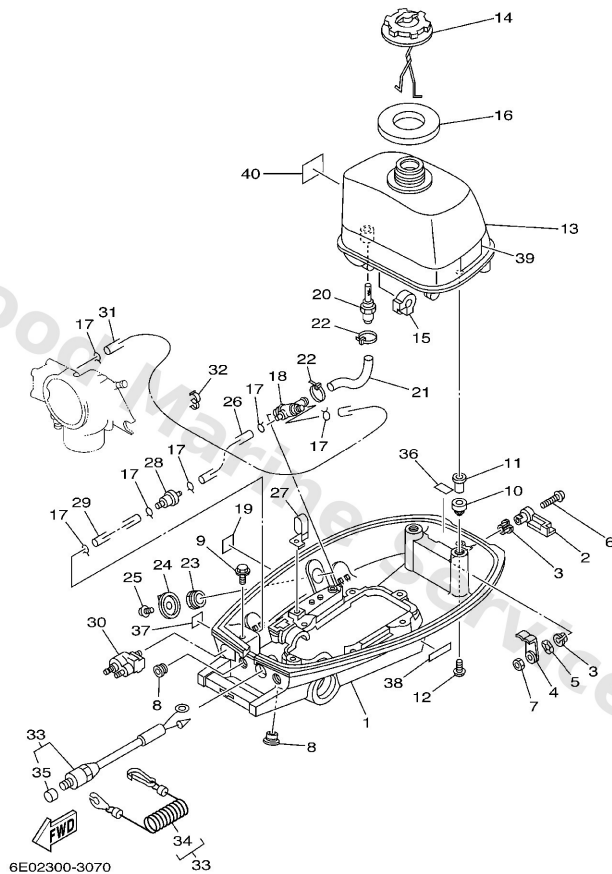
Authorised Yamaha Dealers



# Contents

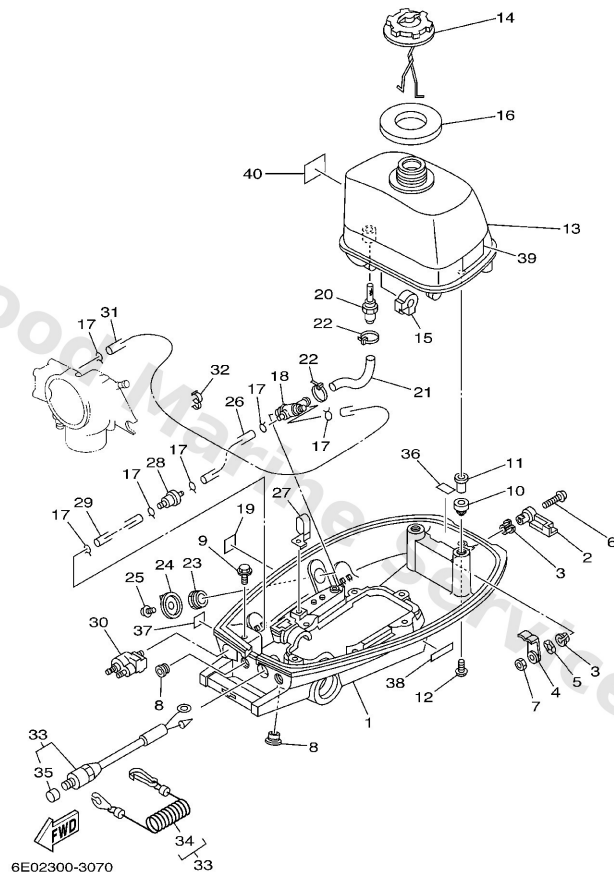
<b>BOTTOM COWLING</b>	3
<b>CONTROL</b>	6
<b>CYLINDER. CRANKCASE</b>	9
<b>ELECTRICAL</b>	13
<b>FUEL TANK</b>	14
<b>GENERATOR</b>	15
<b>INTAKE</b>	17
<b>LOWER CASING. DRIVE</b>	21
<b>REPAIR KIT</b>	26
<b>STARTER</b>	30
<b>TOP COWLING</b>	33
<b>UPPER CASING . BRACKET</b>	34

## Bottom Cowling



Ref	Part	
1	<a href="#">6E0-42711-10-4D</a> Cowling bottom	<a href="#">Buy now</a>
2	<a href="#">6E0-42815-00-4D</a> Lever, clamp	<a href="#">Buy now</a>
3	<a href="#">90386-12069</a> Bush(666)	<a href="#">Buy now</a>
4	<a href="#">6E0-42816-00</a> Lever, clamp	<a href="#">Buy now</a>
5	<a href="#">90206-12052</a> Washer, wave (666)	<a href="#">Buy now</a>
6	<a href="#">97885-06030</a> Screw, pan head(6e0)	<a href="#">Buy now</a>
7	<a href="#">95380-06700</a> Nut	<a href="#">Buy now</a>
8	<a href="#">90480-14M14</a> Grommet (6e0)	<a href="#">Buy now</a>
9	<a href="#">95895-06020</a> Bolt, flange(jk3)	<a href="#">Buy now</a>
10	<a href="#">6E0-24182-00</a> Damper, locating 2	<a href="#">Buy now</a>
10	<a href="#">6E3-24182-00</a> Damper, locating 2	<a href="#">Buy now</a>
11	<a href="#">6E0-42542-00</a> Pipe 1	<a href="#">Buy now</a>
12	<a href="#">95895-06025</a> Bolt, flange deep recess	<a href="#">Buy now</a>
13	<a href="#">6E0-24110-01-4D</a> Fuel Tank Comp	<a href="#">Buy now</a>
14	<a href="#">6E0-24610-02</a> Cap assembly	<a href="#">Buy now</a>

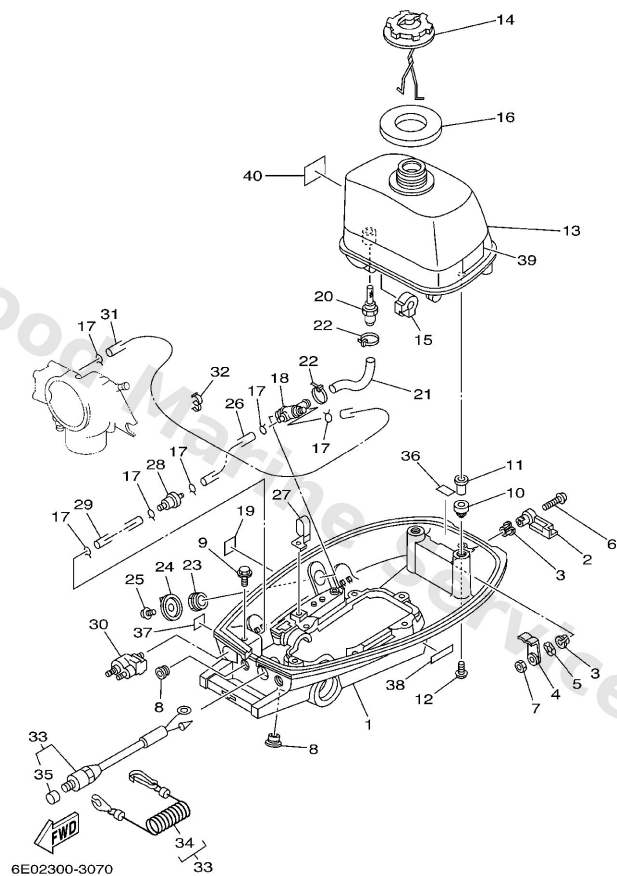
## Bottom Cowling



**B7**

Ref	Part	
15	<a href="#">6E0-24181-00</a> Damper, locating 1	<a href="#">Buy now</a>
16	<a href="#">6E0-24641-00</a> Gasket, cap	<a href="#">Buy now</a>
16	<a href="#">6E3-24641-00</a> Gasket, cap	<a href="#">Buy now</a>
17	<a href="#">90467-08004</a> Clip, pipe 6162435600	<a href="#">Buy now</a>
18	<a href="#">6E0-24500-10</a> Fuel cock assembly 1	<a href="#">Buy now</a>
19	<a href="#">6E0-24591-10</a> Emblem, fuel cock	<a href="#">Buy now</a>
20	<a href="#">6E0-24335-00</a> Pipe, suction 1	<a href="#">Buy now</a>
21	<a href="#">6E0-24311-00</a> Pipe, fuel 1	<a href="#">Buy now</a>
22	<a href="#">90465-13M11</a> Clamp (6e5)	<a href="#">Buy now</a>
23	<a href="#">90170-16M35</a> Nut(6e0)	<a href="#">Buy now</a>
24	<a href="#">6J1-24524-00</a> Lever, cock	<a href="#">Buy now</a>
25	<a href="#">90159-04M24</a> Screw, pan head (e56)	<a href="#">Buy now</a>
26	<a href="#">90445-09M27</a> Hose (l180)	<a href="#">Buy now</a>
27	<a href="#">90465-08M62</a> Clamp(6e0)	<a href="#">Buy now</a>
28	<a href="#">646-24251-02</a> Strainer 1	<a href="#">Buy now</a>

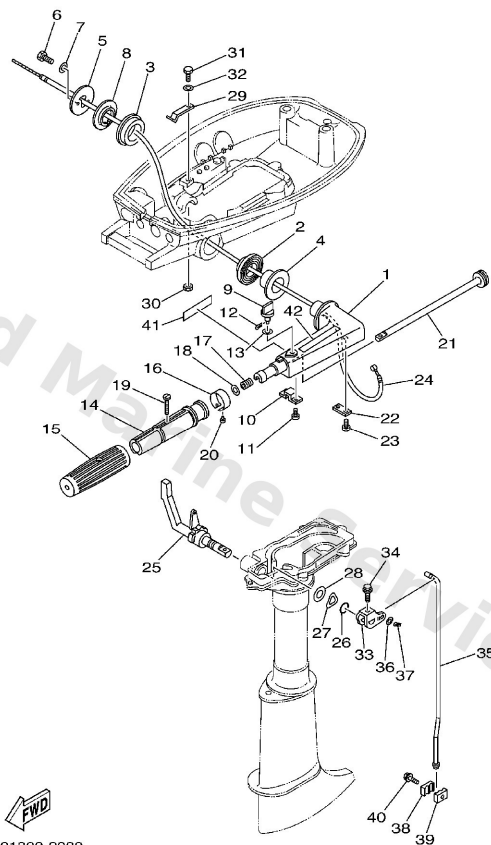
## Bottom Cowling



**B7**

Ref	Part	
29	<a href="#">90445-09057</a> Hose (I180)	<a href="#">Buy now</a>
30	<a href="#">6G1-24304-02</a> Fuel pipe joint comp. 1	<a href="#">Buy now</a>
31	<a href="#">6E0-24312-00</a> Pipe 2	<a href="#">Buy now</a>
32	<a href="#">90464-09M21</a> Clamp(6j8)	<a href="#">Buy now</a>
33	<a href="#">6E0-82575-00</a> Engine stop switch assembly	<a href="#">Buy now</a>
34	<a href="#">682-82556-00</a> Lanyard, stop switch	<a href="#">Buy now</a>
35	<a href="#">689-8257Y-00</a> Cap	<a href="#">Buy now</a>
36	<a href="#">664-42791-10</a> Mark 1	<a href="#">Buy now</a>
37	<a href="#">6A1-28176-00</a> Label Caution	<a href="#">Buy now</a>
38	<a href="#">6E3-8257H-00</a> Plate Mark	<a href="#">Buy now</a>
39	<a href="#">6A1-83625-41</a> Mark 5	<a href="#">Buy now</a>
40	<a href="#">6A1-83625-51</a> Mark 5	<a href="#">Buy now</a>

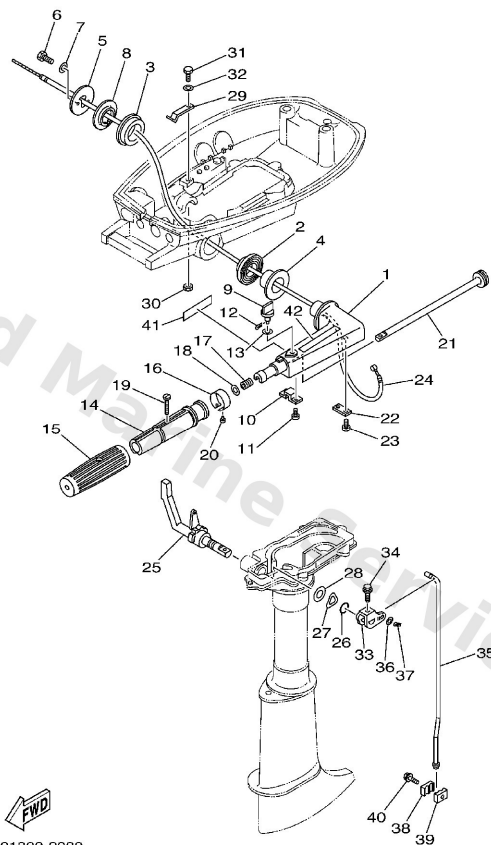
## Control



**C2**

Ref	Part	
1	<a href="#">6E0-42111-02-4D</a> Handle, steering	<a href="#">Buy now</a>
2	<a href="#">6E0-42129-02</a> Bushing, rubber	<a href="#">Buy now</a>
3	<a href="#">6E4-42129-00</a> Bushing, rubber	<a href="#">Buy now</a>
4	<a href="#">90386-26M30</a> Bushing (6e0)	<a href="#">Buy now</a>
5	<a href="#">6E0-42131-02-94</a> Cover, handle steering	<a href="#">Buy now</a>
6	<a href="#">97013-05020</a> Bolt, hexagon	<a href="#">Buy now</a>
7	<a href="#">92903-05600</a> Washer, plain (646)	<a href="#">Buy now</a>
8	<a href="#">90386-26M33</a> Bushing (6e0)	<a href="#">Buy now</a>
9	<a href="#">6E0-42125-00</a> Bolt, friction adjust	<a href="#">Buy now</a>
10	<a href="#">6E0-42134-02</a> Cover, throttle lever	<a href="#">Buy now</a>
11	<a href="#">97885-05012</a> Screw,pan head (646)	<a href="#">Buy now</a>
12	<a href="#">91490-12010</a> Pin, cotter (6g8)	<a href="#">Buy now</a>
13	<a href="#">90202-07M22</a> Washer (6e0)	<a href="#">Buy now</a>
14	<a href="#">6E0-42119-00</a> Grip, steering handle	<a href="#">Buy now</a>
15	<a href="#">6E0-42177-00</a> Rubber, handle	<a href="#">Buy now</a>

## Control

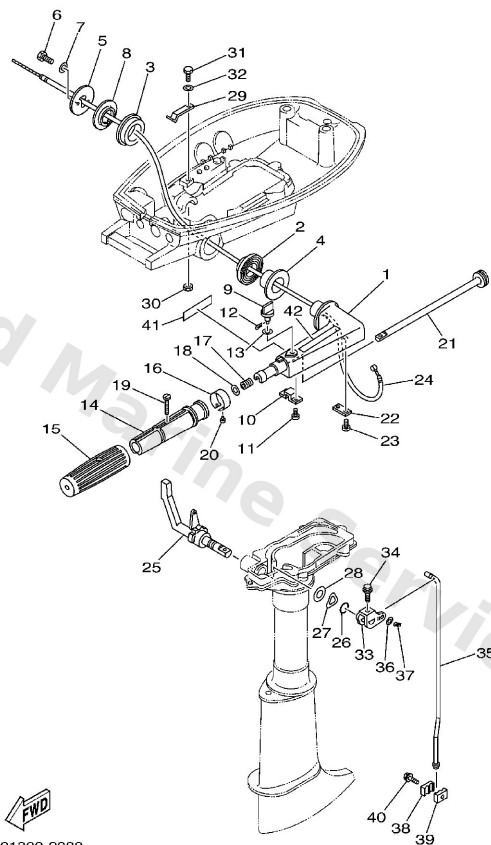


6E01300-2080

**C2**

Ref	Part	
16	<a href="#">6E0-42137-10</a> Indicator, throttle	<a href="#">Buy now</a>
17	<a href="#">90501-23215</a> Spring (655)	<a href="#">Buy now</a>
18	<a href="#">90201-10119</a> Washer, plain(735)	<a href="#">Buy now</a>
19	<a href="#">90149-05M13</a> Screw, countersunk	<a href="#">Buy now</a>
20	<a href="#">90269-02M09</a> Rivet(615)	<a href="#">Buy now</a>
21	<a href="#">6E0-42138-01</a> Lever, throttle	<a href="#">Buy now</a>
22	<a href="#">6E0-42159-02</a> Stay	<a href="#">Buy now</a>
24	<a href="#">6E0-26301-01</a> Throttle wire assembly	<a href="#">Buy now</a>
25	<a href="#">6E4-44111-72-4D</a> Handle, gear shift	<a href="#">Buy now</a>
26	<a href="#">93210-12327</a> O-ring(3ld)	<a href="#">Buy now</a>
27	<a href="#">90206-16M06</a> Washer, wave (6e0)	<a href="#">Buy now</a>
28	<a href="#">90202-16061</a> Washer, plate(663)	<a href="#">Buy now</a>
29	<a href="#">6E0-44116-00</a> Spring	<a href="#">Buy now</a>
30	<a href="#">95380-06700</a> Nut	<a href="#">Buy now</a>
31	<a href="#">97095-06012</a> Bolt(gh1)	<a href="#">Buy now</a>

# Control



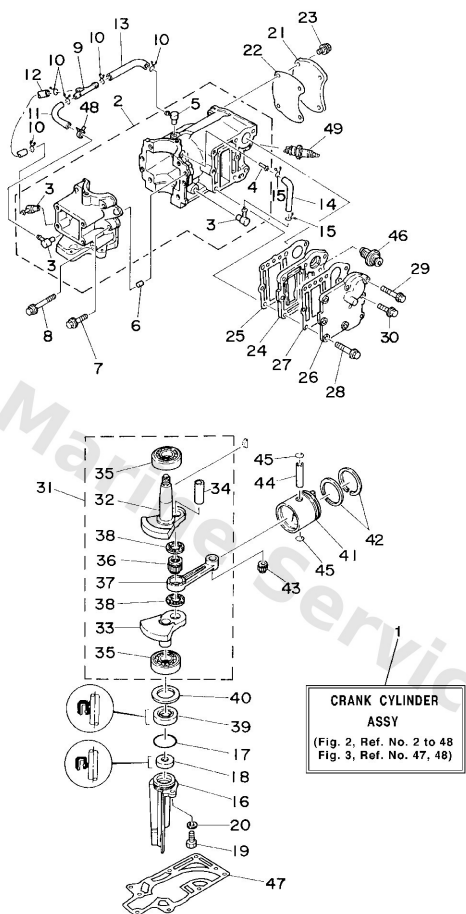
6E01300-2080

**C2**

Ref	Part	
32	<a href="#">92995-06600</a> Washer, plain (646)	<a href="#">Buy now</a>
33	<a href="#">6E0-44121-00</a> Lever, shift rod 1	<a href="#">Buy now</a>
34	<a href="#">95895-06025</a> Bolt, flange deep recess	<a href="#">Buy now</a>
35	<a href="#">6E0-44143-00</a> Rod, shift 1 S	<a href="#">Buy now</a>
35	<a href="#">6E0-44143-10</a> Rod, shift 1 L	<a href="#">Buy now</a>
36	<a href="#">92990-05600</a> Washer, plain (646)	<a href="#">Buy now</a>
37	<a href="#">91490-16010</a> Pin, cotter	<a href="#">Buy now</a>
38	<a href="#">6E0-44145-00</a> Connector, shift rod 1	<a href="#">Buy now</a>
39	<a href="#">6E0-44146-00</a> Connector, shift rod 2	<a href="#">Buy now</a>
40	<a href="#">95895-06020</a> Bolt, flange(jk3)	<a href="#">Buy now</a>
41	<a href="#">6A1-2415A-41</a> Label, caution	<a href="#">Buy now</a>
42	<a href="#">6A1-2415A-51</a> Label Caution	<a href="#">Buy now</a>



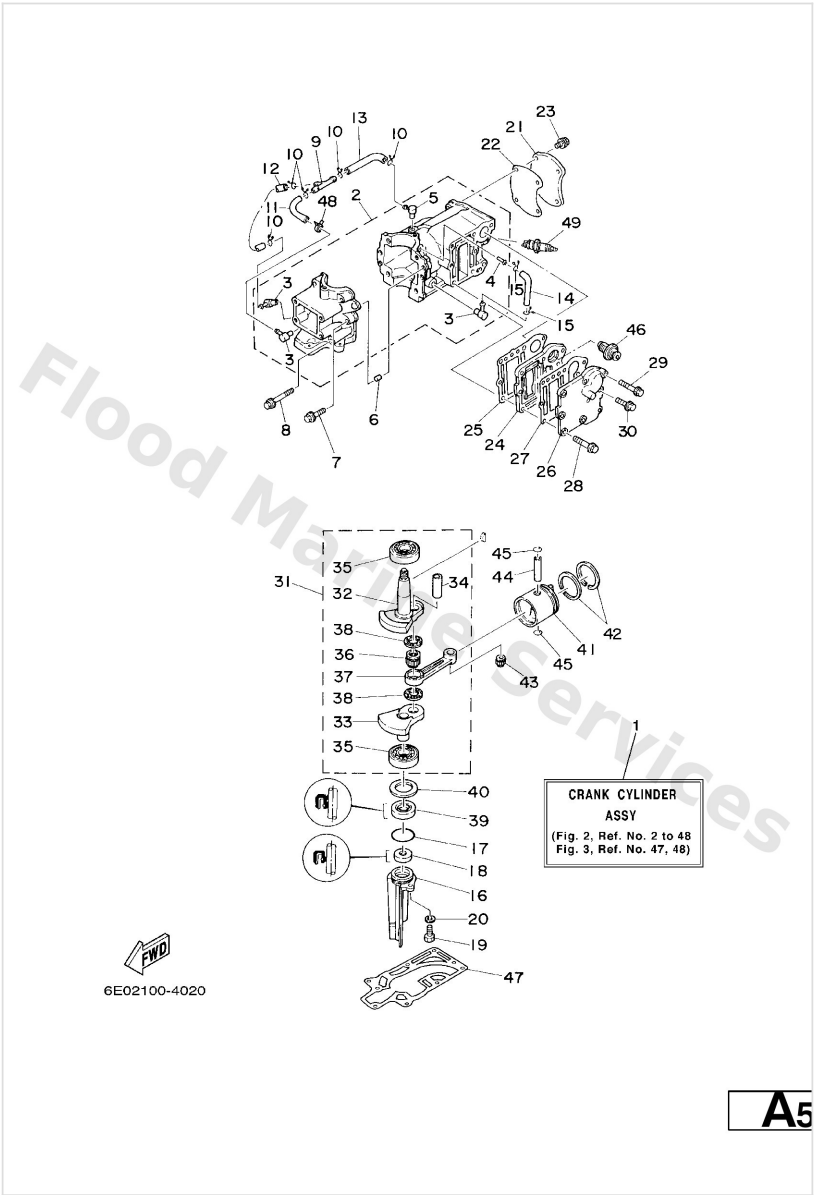
# Cylinder. Crankcase



A5

Ref	Part	
3	<a href="#">650-11370-01</a> Check valve assembly	<a href="#">Buy now</a>
4	<a href="#">624-14485-00</a> Pipe, joint	<a href="#">Buy now</a>
5	<a href="#">6E5-11372-01</a> Nipple, hose	<a href="#">Buy now</a>
6	<a href="#">93606-12019</a> Pin, dowel (614)	<a href="#">Buy now</a>
7	<a href="#">90105-06M16</a> Bolt (6e0)	<a href="#">Buy now</a>
8	<a href="#">90105-06M17</a> Bolt (6e0)	<a href="#">Buy now</a>
9	<a href="#">6E0-24378-00</a> Pipe, joint	<a href="#">Buy now</a>
10	<a href="#">90467-06016</a> Clip (655)	<a href="#">Buy now</a>
11	<a href="#">90445-07M00</a> Hose (I200)	<a href="#">Buy now</a>
12	<a href="#">90445-07M28</a> Hose (I200)	<a href="#">Buy now</a>
13	<a href="#">90445-07M32</a> Hose (I200)	<a href="#">Buy now</a>
17	<a href="#">93210-31MJ5</a> O-ring	<a href="#">Buy now</a>
18	<a href="#">93101-10M25</a> Oil seal(6e0)	<a href="#">Buy now</a>
19	<a href="#">97095-06016</a> Bolt, hexagon deep recess	<a href="#">Buy now</a>
20	<a href="#">92995-06600</a> Washer, plain (646)	<a href="#">Buy now</a>

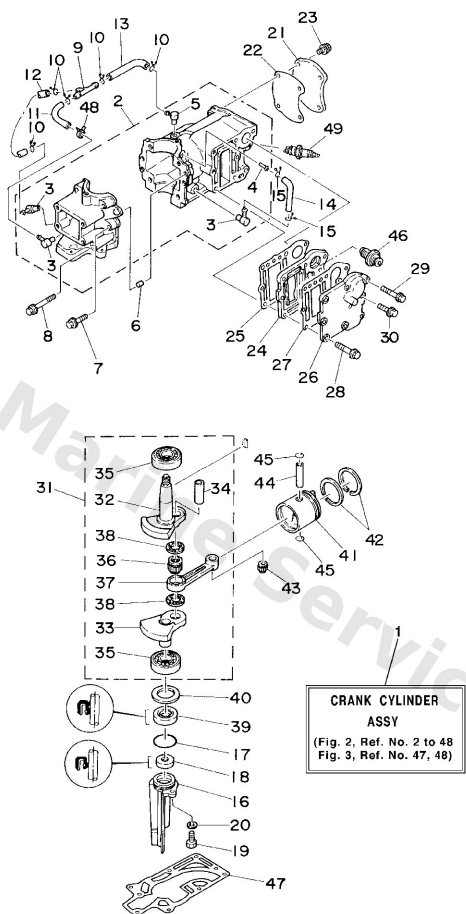
Cylinder. Crankcase



A5

Ref	Part	
22	<a href="#">6E0-11193-A1</a> Gasket,head cover	<a href="#">Buy now</a>
22	<a href="#">6E3-11193-A1</a> Gasket,head cover	<a href="#">Buy now</a>
23	<a href="#">90105-06039</a> Bolt, flange	<a href="#">Buy now</a>
24	<a href="#">6E0-41111-01-1S</a> Inner cover, exhaust	<a href="#">Buy now</a>
24	<a href="#">6E3-41111-01-1S</a> Inner cover, exhaust	<a href="#">Buy now</a>
25	<a href="#">6E0-41112-A1</a> Gasket,inner cover exhaust	<a href="#">Buy now</a>
25	<a href="#">6E3-41112-A1</a> Gasket,inner cover exhaust	<a href="#">Buy now</a>
26	<a href="#">6E0-41113-01-1S</a> Outer cover, exhaust	<a href="#">Buy now</a>
26	<a href="#">6E3-41113-01-1S</a> Outer cover, exhaust	<a href="#">Buy now</a>
27	<a href="#">6E0-41114-A1</a> Gasket,outer cover exhaust	<a href="#">Buy now</a>
27	<a href="#">6E3-41114-A1</a> Gasket,outer cover exhaust	<a href="#">Buy now</a>
28	<a href="#">90105-06037</a> Bolt, flange	<a href="#">Buy now</a>
29	<a href="#">90105-06035</a> Bolt, flange	<a href="#">Buy now</a>
31	<a href="#">6E0-11400-00</a> Crank assembly	<a href="#">Buy now</a>
31	<a href="#">6E3-11400-00</a> Crank ass'y	<a href="#">Buy now</a>

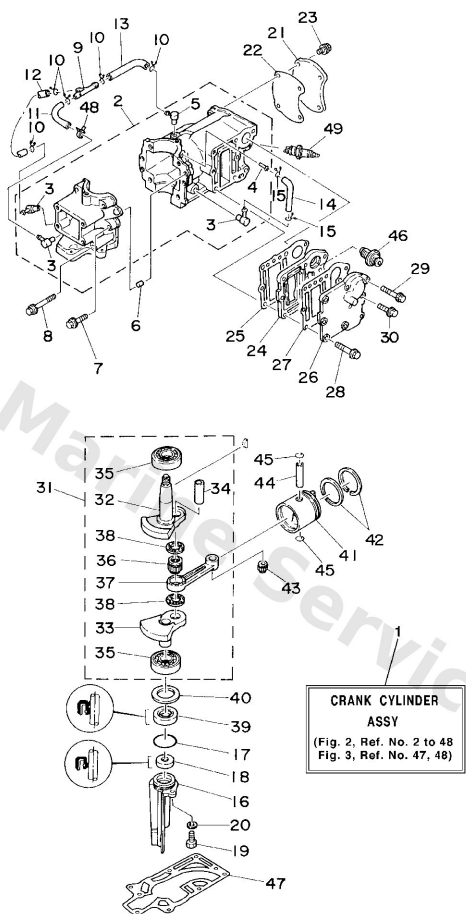
# Cylinder. Crankcase



A5

Ref	Part	
32	<a href="#">6E0-11412-00</a> Crank 1	<a href="#">Buy now</a>
32	<a href="#">6E3-11412-00</a> Crank 1	<a href="#">Buy now</a>
33	<a href="#">6E0-11422-00</a> Crank 2	<a href="#">Buy now</a>
33	<a href="#">6E3-11422-00</a> Crank 2	<a href="#">Buy now</a>
34	<a href="#">6G1-11681-00</a> Pin, crank	<a href="#">Buy now</a>
35	<a href="#">93306-204U0</a> Bearing(6e0)	<a href="#">Buy now</a>
36	<a href="#">93310-418V1</a> Bearing (6e0)	<a href="#">Buy now</a>
37	<a href="#">6E0-11651-01</a> Rod, connecting	<a href="#">Buy now</a>
38	<a href="#">90209-18112</a> Washer 132116850000	<a href="#">Buy now</a>
39	<a href="#">93101-20M29</a> Oil seal(6j1)	<a href="#">Buy now</a>
40	<a href="#">90201-32M48</a> Shim (t:0.90mm)	<a href="#">Buy now</a>
41	<a href="#">6E0-11631-00-98</a> Piston	<a href="#">Buy now</a>
41	<a href="#">6E3-11631-00-98</a> Piston	<a href="#">Buy now</a>
42	<a href="#">6G1-11610-00</a> Piston ring set (std)	<a href="#">Buy now</a>
42	<a href="#">6j1-11610-00</a> Piston ring set (std)	<a href="#">Buy now</a>

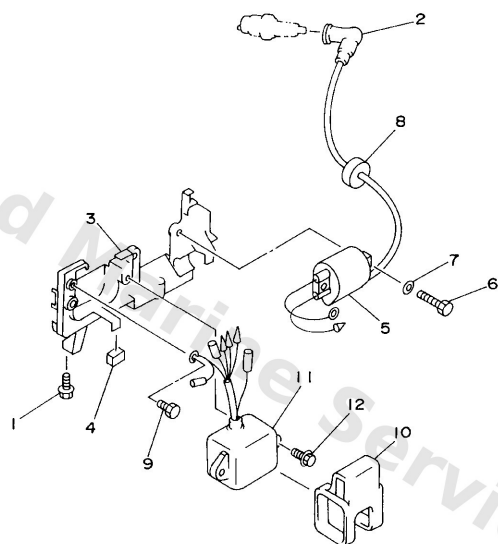
# Cylinder. Crankcase



A5

Ref	Part	
43	<a href="#">93310-112V0</a> Bearing (6e0)	<a href="#">Buy now</a>
44	<a href="#">6G1-11633-00</a> Pin, piston	<a href="#">Buy now</a>
45	<a href="#">93450-13022</a> Circlip 132116340000	<a href="#">Buy now</a>
46	<a href="#">6E5-12411-01</a> Thermostat	<a href="#">Buy now</a>
47	<a href="#">6E0-45113-A1</a> Gasket, upper casing	<a href="#">Buy now</a>
48	<a href="#">90468-07M02</a> Clip (6e5)	<a href="#">Buy now</a>
49	<a href="#">94702-00272</a> Plug, spark (br7hs)	<a href="#">Buy now</a>

# Electrical

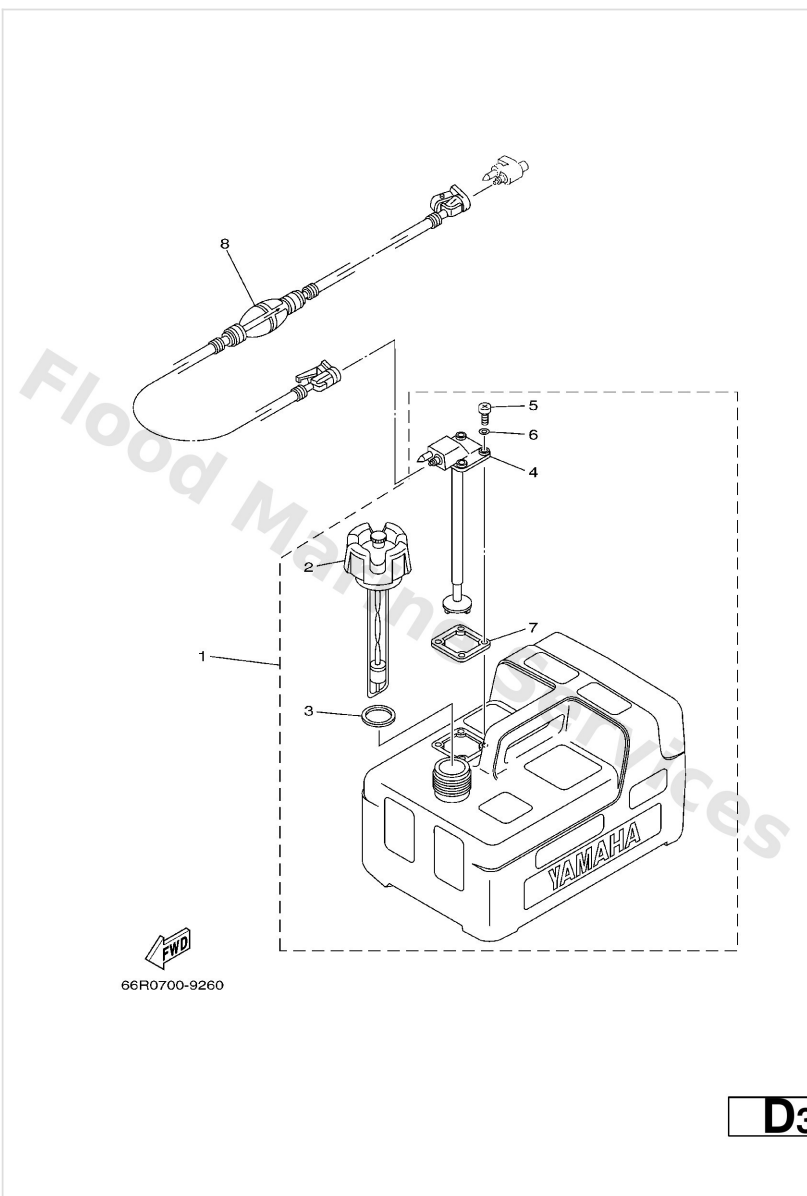


6E00010-6060

**B6**

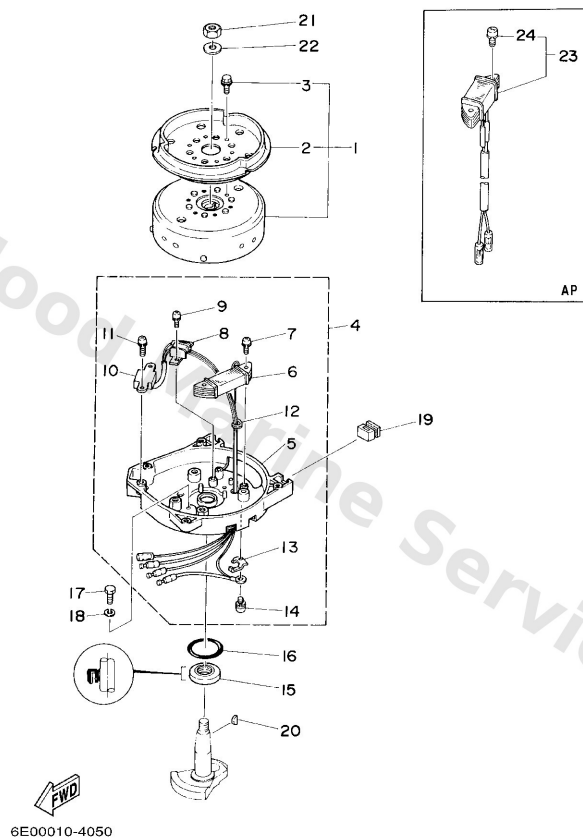
Ref	Part	
1	<a href="#">95895-06016</a> Bolt, flange deep recess	<a href="#">Buy now</a>
2	<a href="#">6E3-82370-21</a> Plug cap assembly	<a href="#">Buy now</a>
2	<a href="#">6G1-82370-21</a> Plug cap assembly	<a href="#">Buy now</a>
3	<a href="#">6E0-82316-01-94</a> Bracket, ignition coil	<a href="#">Buy now</a>
4	<a href="#">6E0-82317-00</a> Damper	<a href="#">Buy now</a>
5	<a href="#">6E0-85570-00</a> Ignition coil assembly	<a href="#">Buy now</a>
6	<a href="#">97095-06016</a> Bolt, hexagon deep recess	<a href="#">Buy now</a>
7	<a href="#">92995-06600</a> Washer, plain (646)	<a href="#">Buy now</a>
8	<a href="#">90480-25161</a> Grommet(656)	<a href="#">Buy now</a>
9	<a href="#">97080-06010</a> Bolt	<a href="#">Buy now</a>
10	<a href="#">6E0-85548-00</a> Holder, wire harness	<a href="#">Buy now</a>
11	<a href="#">6E0-85540-71</a> C.d.i. unit assembly	<a href="#">Buy now</a>
12	<a href="#">95895-06020</a> Bolt, flange(jk3)	<a href="#">Buy now</a>

# Fuel Tank



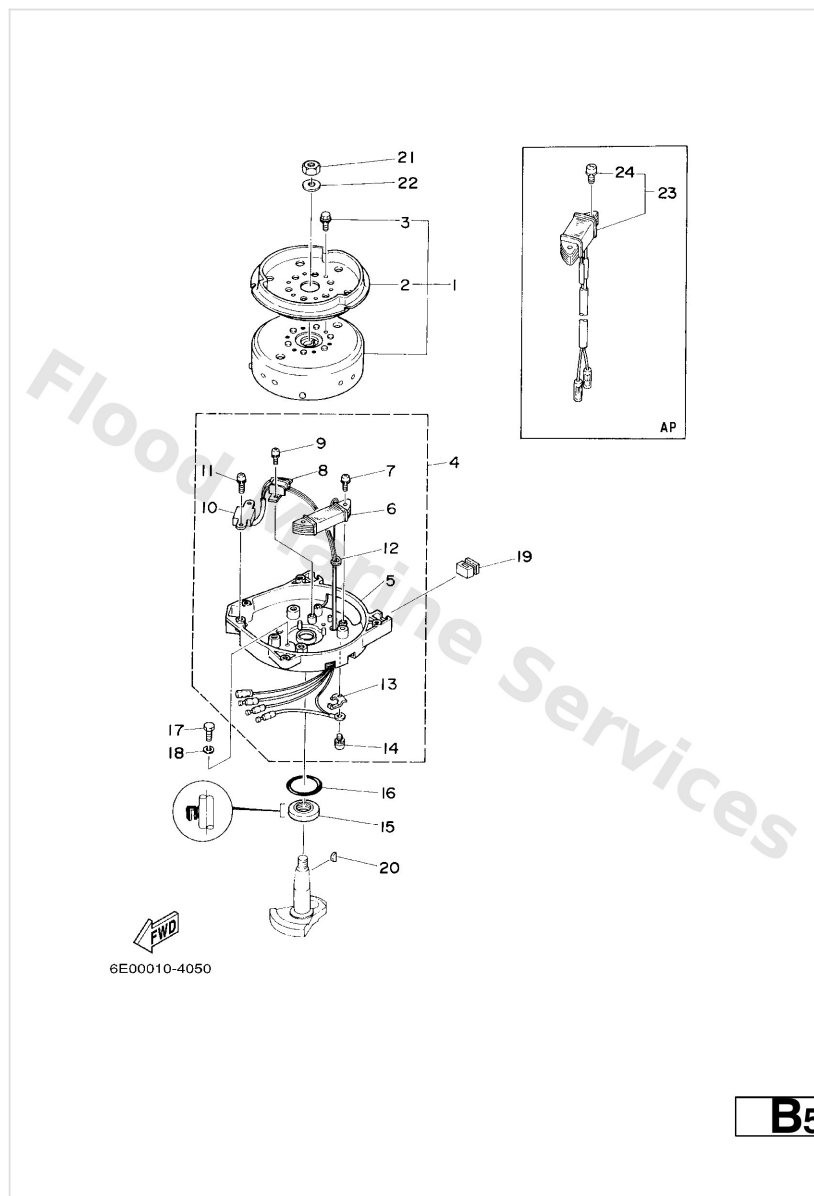
Ref	Part	
1	<a href="#">6YL-24201-02</a> Fuel Tank assembly AP	<a href="#">Buy now</a>
2	<a href="#">6YL-24610-00</a> Cap Assembly	<a href="#">Buy now</a>
3	<a href="#">6YL-24641-00</a> Gasket, cap 1	<a href="#">Buy now</a>
4	<a href="#">6YL-24260-01</a> Fuel meter assembly	<a href="#">Buy now</a>
5	<a href="#">90157-05M16</a> Screw, pan head	<a href="#">Buy now</a>
6	<a href="#">6YL-24329-00</a> Seal	<a href="#">Buy now</a>
7	<a href="#">6YL-24268-01</a> Gasket, fuel meter	<a href="#">Buy now</a>
8	<a href="#">6YL-24306-52</a> Fuel pipe comp. 1 AP	<a href="#">Buy now</a>

# Generator



Ref	Part	
1	<a href="#">6E0-85550-71</a> Rotor assembly	<a href="#">Buy now</a>
2	<a href="#">6E0-15723-00-94</a> Pulley, Starter	<a href="#">Buy now</a>
3	<a href="#">90105-06M14</a> Bolt (6e0)	<a href="#">Buy now</a>
4	<a href="#">6E0-85560-70</a> Base assembly	<a href="#">Buy now</a>
5	<a href="#">6E0-15359-00-94</a> Housing, oil seal	<a href="#">Buy now</a>
6	<a href="#">6E0-85520-70</a> Charge coil ass'y	<a href="#">Buy now</a>
7	<a href="#">90159-05038</a> Screw, With Washer	<a href="#">Buy now</a>
8	<a href="#">6E0-85595-70</a> Coil pulser assembly 1	<a href="#">Buy now</a>
9	<a href="#">90159-04036</a> Screw, pan head(6g8)	<a href="#">Buy now</a>
10	<a href="#">6E0-85592-70</a> Pulser coil assembly 2	<a href="#">Buy now</a>
11	<a href="#">90159-05037</a> Screw,w/washer	<a href="#">Buy now</a>
12	<a href="#">6E0-81336-70</a> Grommet	<a href="#">Buy now</a>
13	<a href="#">6E0-81328-70</a> Clamp	<a href="#">Buy now</a>
14	<a href="#">90159-04035</a> Screw panhead (695)	<a href="#">Buy now</a>
15	<a href="#">93102-20M25</a> Oil seal (6e0)	<a href="#">Buy now</a>

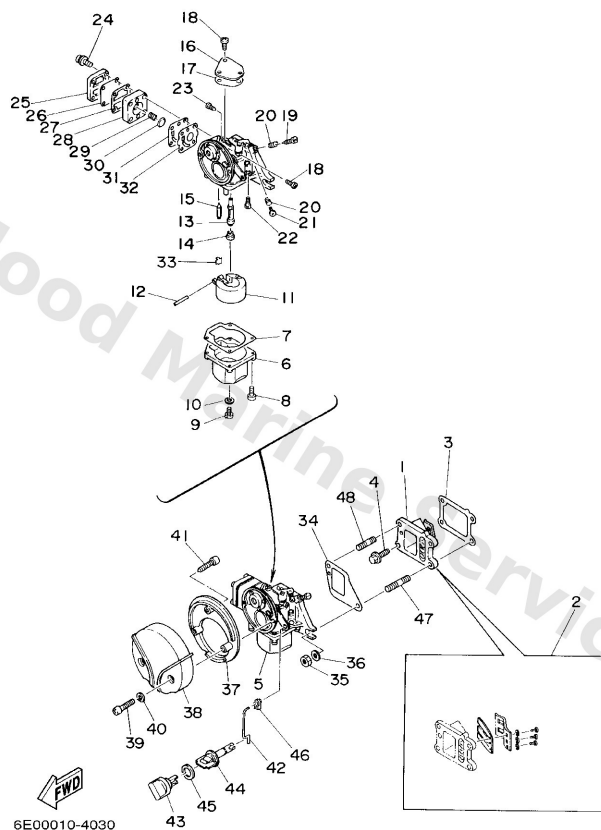
# Generator



Ref	Part	
16	<a href="#">93210-42159</a> O-ring (647)	<a href="#">Buy now</a>
17	<a href="#">97095-06016</a> Bolt, hexagon deep recess	<a href="#">Buy now</a>
18	<a href="#">92995-06100</a> Washer(6a1)	<a href="#">Buy now</a>
19	<a href="#">6E0-24183-00</a> Damper, locating 3	<a href="#">Buy now</a>
20	<a href="#">90280-04M06</a> Key, woodruff(6a1)	<a href="#">Buy now</a>
21	<a href="#">90170-10113</a> Nut, crank shaft (650)	<a href="#">Buy now</a>
22	<a href="#">90201-10126</a> Washer, plate (26h)	<a href="#">Buy now</a>
23	<a href="#">6E0-81303-40</a> Lighting coil assembly AP 40W	<a href="#">Buy now</a>
23	<a href="#">6E0-81303-80</a> Lighting coil assembly AP 60W	<a href="#">Buy now</a>
24	<a href="#">90159-05040</a> Screw, pan head(4my)	<a href="#">Buy now</a>

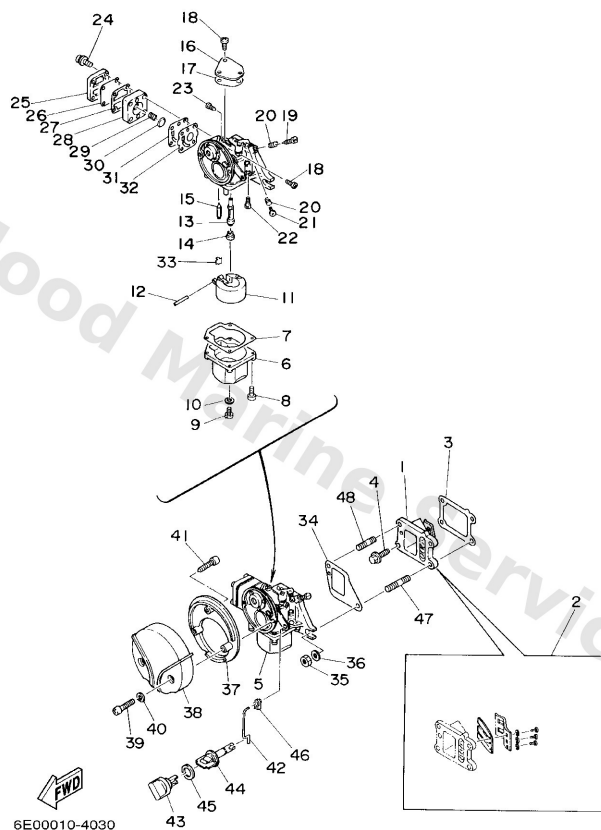


# Intake



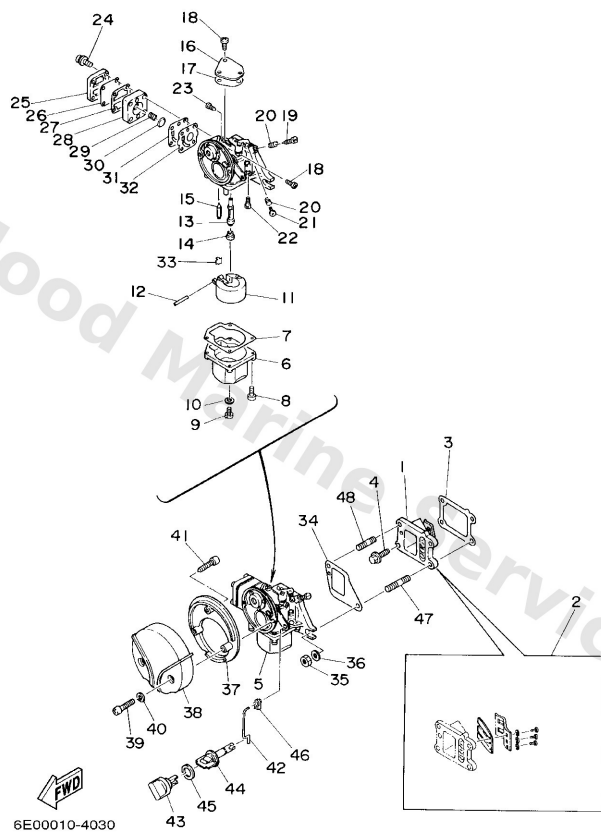
Ref	Part	
1	<a href="#">6E0-13610-00</a> Reed valve assembly	<a href="#">Buy now</a>
2	<a href="#">6E0-W0004-00</a> Reed set	<a href="#">Buy now</a>
3	<a href="#">6E0-13621-A2</a> Gasket, valve seat	<a href="#">Buy now</a>
4	<a href="#">95895-06016</a> Bolt, flange deep recess	<a href="#">Buy now</a>
5	<a href="#">6E0-14301-05</a> Carburetor assembly 1	<a href="#">Buy now</a>
5	<a href="#">6E3-14301-05</a> Carburetor assembly 1	<a href="#">Buy now</a>
6	<a href="#">6E0-14381-02</a> Body, float chamber	<a href="#">Buy now</a>
7	<a href="#">6E0-14384-00</a> Gasket, float chamber	<a href="#">Buy now</a>
8	<a href="#">97980-04116</a> Screw, with washer(61b)	<a href="#">Buy now</a>
9	<a href="#">97890-05006</a> Screw,panhead (eg9)	<a href="#">Buy now</a>
10	<a href="#">646-14198-01</a> Gasket	<a href="#">Buy now</a>
11	<a href="#">6E7-14385-01</a> Float	<a href="#">Buy now</a>
12	<a href="#">647-14386-00</a> Pin, float	<a href="#">Buy now</a>
13	<a href="#">6E0-14341-01</a> Nozzle, main	<a href="#">Buy now</a>
13	<a href="#">6E3-14341-02</a> Nozzle, main	<a href="#">Buy now</a>

# Intake



Ref	Part	
14	<a href="#">648-14343-40</a> Jet, main (#80)	<a href="#">Buy now</a>
15	<a href="#">6F5-14392-00</a> Valve, needle	<a href="#">Buy now</a>
16	<a href="#">6E0-14157-00</a> Cover, plate	<a href="#">Buy now</a>
17	<a href="#">6E0-14227-00</a> Gasket	<a href="#">Buy now</a>
18	<a href="#">97890-04007</a> Screw, pan head (7h3)	<a href="#">Buy now</a>
19	<a href="#">647-14323-00</a> Screw, air adjusting	<a href="#">Buy now</a>
20	<a href="#">646-14212-01</a> Spring, pilot adjusting	<a href="#">Buy now</a>
21	<a href="#">664-14321-01</a> Screw, throttle	<a href="#">Buy now</a>
22	<a href="#">648-14342-23</a> Jet, pilot (#46)	<a href="#">Buy now</a>
22	<a href="#">648-14342-26</a> Jet, pilot (#52)	<a href="#">Buy now</a>
23	<a href="#">647-14326-00</a> Screw, guide	<a href="#">Buy now</a>
24	<a href="#">97980-04120</a> Screw, pan head (7h3)	<a href="#">Buy now</a>
25	<a href="#">6E0-24413-00</a> Cover, pump	<a href="#">Buy now</a>
26	<a href="#">6E0-24471-00</a> Diaphragm	<a href="#">Buy now</a>
27	<a href="#">6E0-24435-00</a> Gasket, cover pump	<a href="#">Buy now</a>

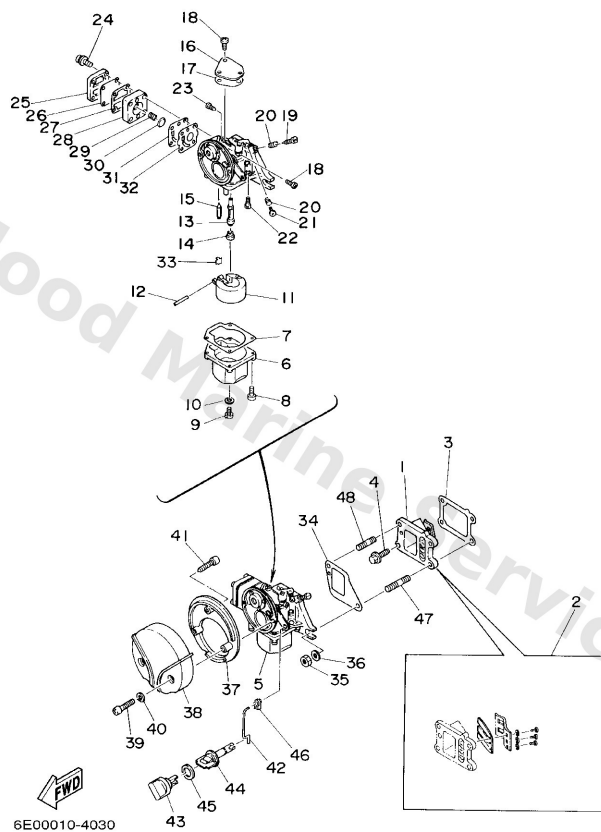
# Intake



**B1**

Ref	Part	
28	<a href="#">6E0-24412-00</a> Body, pump	<a href="#">Buy now</a>
29	<a href="#">6E0-24423-00</a> Spring	<a href="#">Buy now</a>
30	<a href="#">6E0-14346-00</a> Plate	<a href="#">Buy now</a>
31	<a href="#">6E0-24411-00</a> Diaphragm	<a href="#">Buy now</a>
32	<a href="#">6E0-24434-00</a> Gasket, body pump	<a href="#">Buy now</a>
33	<a href="#">6E0-14159-00</a> Clip	<a href="#">Buy now</a>
34	<a href="#">6E0-14198-A0</a> Gasket	<a href="#">Buy now</a>
35	<a href="#">95380-06700</a> Nut	<a href="#">Buy now</a>
36	<a href="#">92995-06600</a> Washer, plain (646)	<a href="#">Buy now</a>
37	<a href="#">6E0-14417-00</a> Cover 1	<a href="#">Buy now</a>
38	<a href="#">6E0-14418-00</a> Cover 2	<a href="#">Buy now</a>
39	<a href="#">97880-05025</a> Screw, panhead (a93)	<a href="#">Buy now</a>
40	<a href="#">92990-05600</a> Washer, plain (646)	<a href="#">Buy now</a>
41	<a href="#">97780-40720</a> Ybs81-420 screw,0.head tapping	<a href="#">Buy now</a>
42	<a href="#">6E0-41256-00</a> Rod, choke link	<a href="#">Buy now</a>

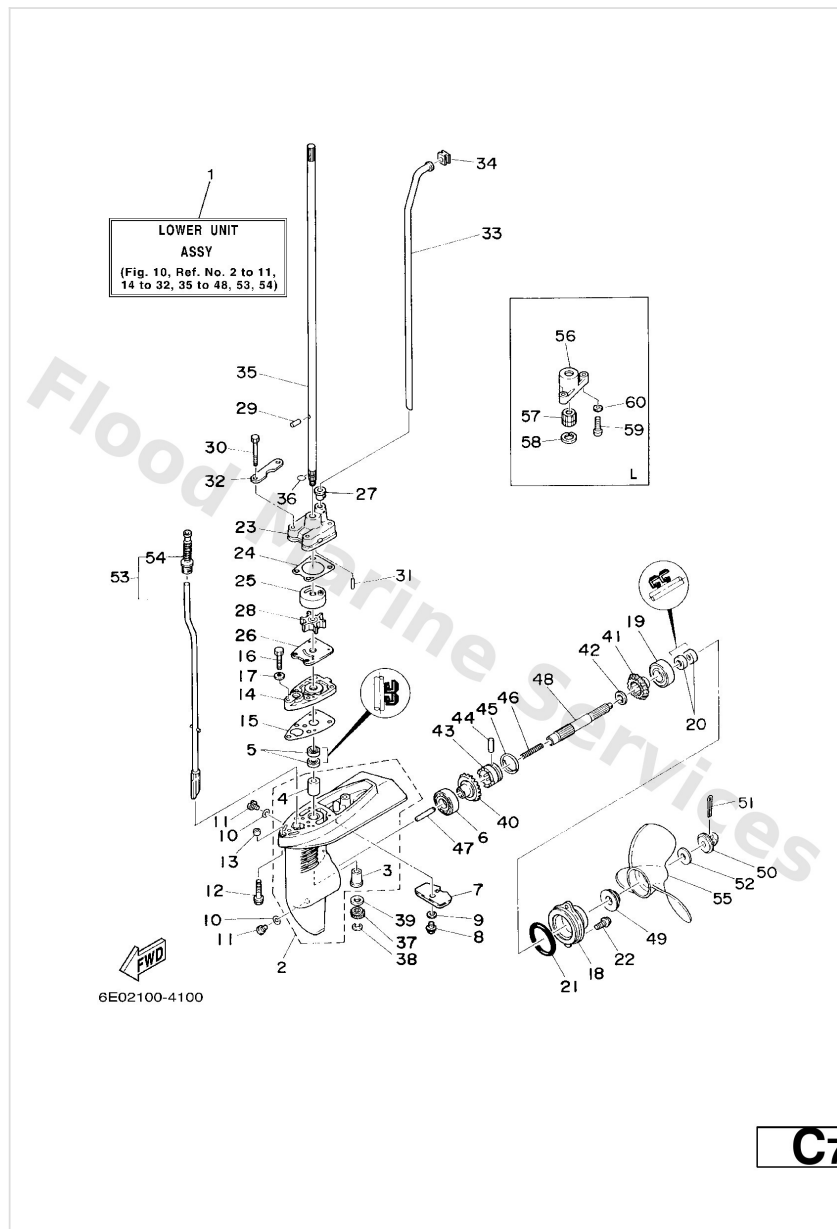
# Intake



**B1**

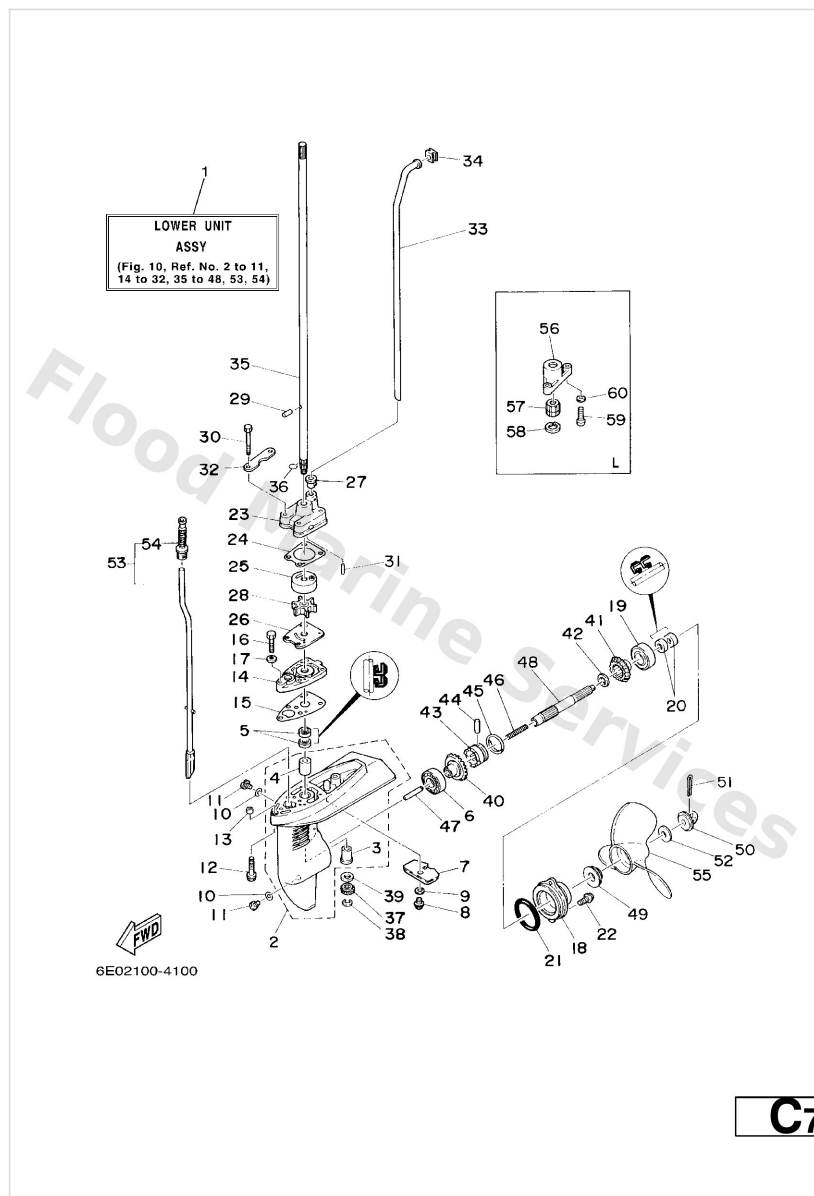
Ref	Part	
43	<a href="#">6E0-41271-00</a> Knob, choke	<a href="#">Buy now</a>
44	<a href="#">6E0-41272-00</a> Knob, choke 2	<a href="#">Buy now</a>
45	<a href="#">90202-12M16</a> Washer, plate (6e0)	<a href="#">Buy now</a>
46	<a href="#">661-41262-02</a> Joint, choke lever	<a href="#">Buy now</a>
47	<a href="#">95627-06325</a> Bolt, stud(6e0)	<a href="#">Buy now</a>
48	<a href="#">90116-06M08</a> Bolt, stud (689)	<a href="#">Buy now</a>

## Lower Casing. Drive



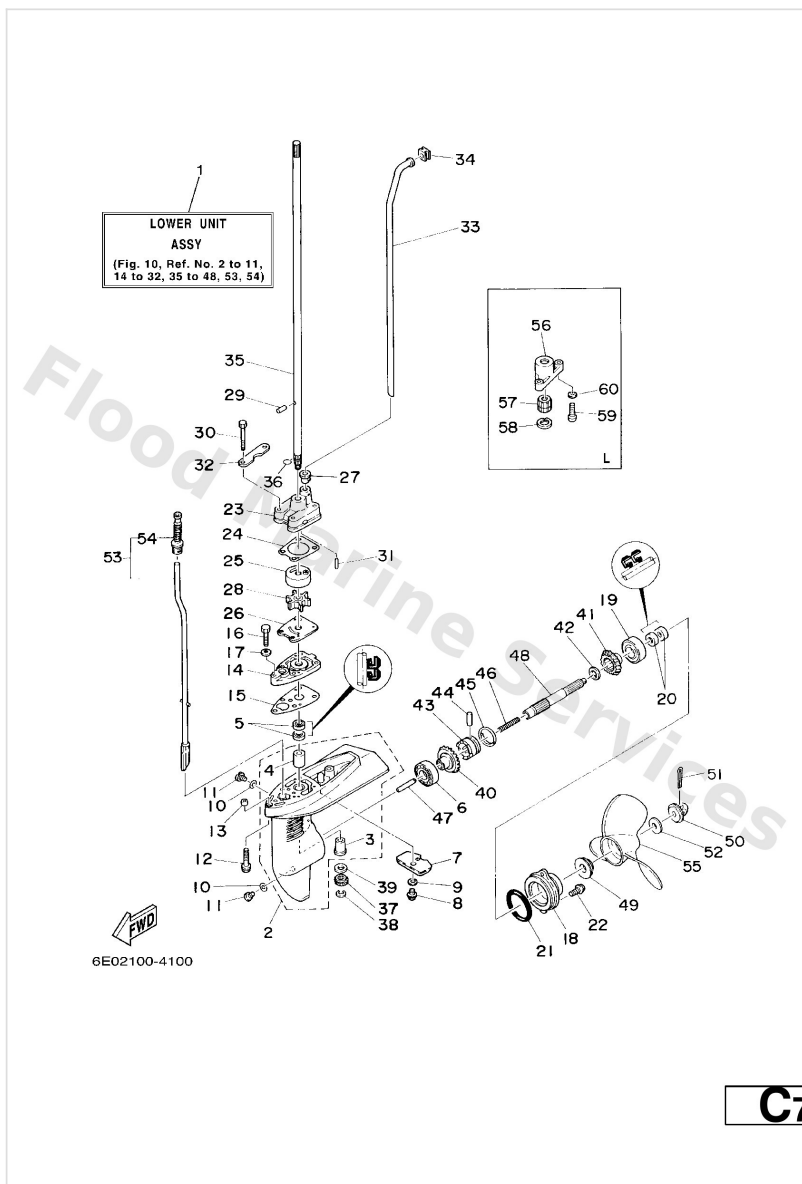
Ref	Part	
1	<a href="#">6E0-45300-03-4D</a> Lower unit assembly S	<a href="#">Buy now</a>
1	<a href="#">6E0-45300-13-4D</a> Lower unit assembly L	<a href="#">Buy now</a>
2	<a href="#">6E0-45311-02-4D</a> Casing, lower	<a href="#">Buy now</a>
3	<a href="#">6E0-45317-09</a> Bushing	<a href="#">Buy now</a>
4	<a href="#">6E0-45316-09</a> Bushing	<a href="#">Buy now</a>
5	<a href="#">93101-10M14</a> Oil seal	<a href="#">Buy now</a>
6	<a href="#">93306-004U0</a> Bearing (7k2)	<a href="#">Buy now</a>
7	<a href="#">6L5-45251-03</a> Anode	<a href="#">Buy now</a>
8	<a href="#">95895-06012</a> Bolt, flange deep recess	<a href="#">Buy now</a>
9	<a href="#">92990-06300</a> Washer, tooth	<a href="#">Buy now</a>
10	<a href="#">90430-08020</a> Gasket	<a href="#">Buy now</a>
11	<a href="#">90340-08002</a> Plug, straight screw	<a href="#">Buy now</a>
12	<a href="#">90119-06M40</a> Bolt, with washer	<a href="#">Buy now</a>
13	<a href="#">90387-06M14</a> Collar(6e0)	<a href="#">Buy now</a>
14	<a href="#">6E0-45321-01-5B</a> Plate	<a href="#">Buy now</a>

## Lower Casing. Drive



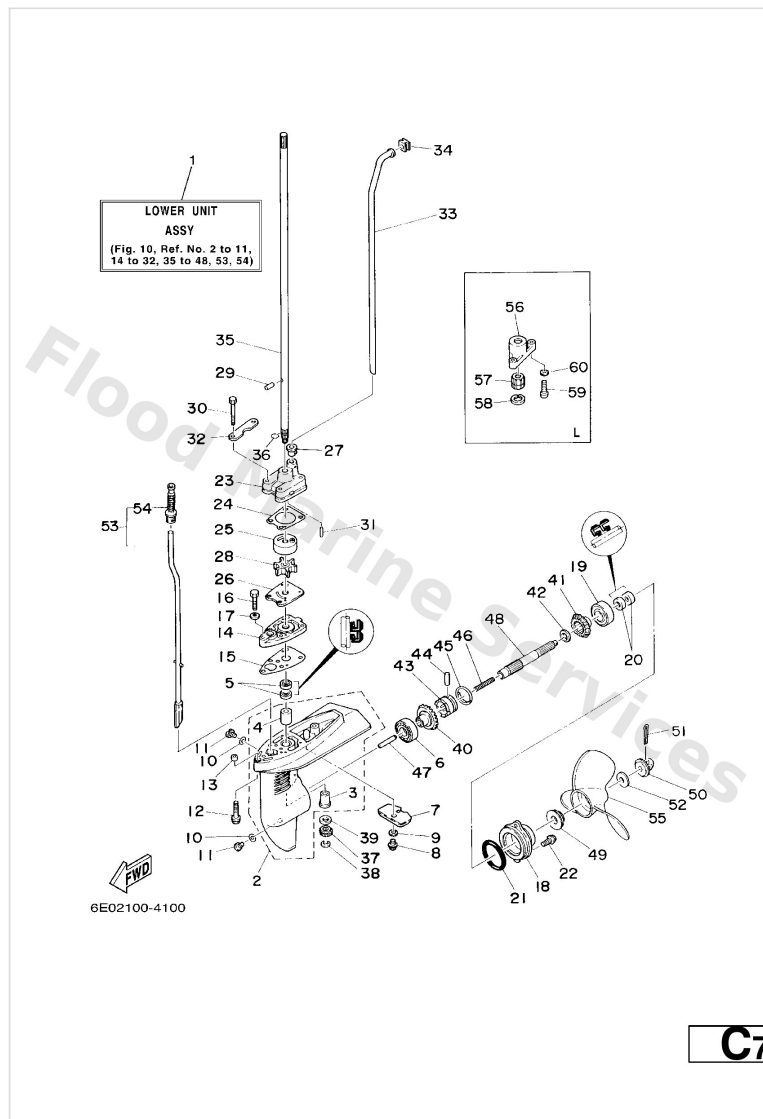
Ref	Part	
15	<a href="#">6E0-45315-A0</a> Packing, lower casing	<a href="#">Buy now</a>
16	<a href="#">97095-06025</a> Bolt	<a href="#">Buy now</a>
17	<a href="#">92995-06600</a> Washer, plain (646)	<a href="#">Buy now</a>
18	<a href="#">6E0-45361-01-4D</a> Cap, lower casing	<a href="#">Buy now</a>
20	<a href="#">93101-13M12</a> Oil seal	<a href="#">Buy now</a>
21	<a href="#">93210-48214</a> O-ring	<a href="#">Buy now</a>
22	<a href="#">95895-06016</a> Bolt, flange deep recess	<a href="#">Buy now</a>
23	<a href="#">6E0-44311-00</a> Housing, water pump	<a href="#">Buy now</a>
24	<a href="#">6E0-44315-A0</a> Gasket, water pump 1	<a href="#">Buy now</a>
25	<a href="#">6E0-44322-02</a> Insert, cartridge	<a href="#">Buy now</a>
26	<a href="#">6E0-44323-00</a> Outer plate, cartridge	<a href="#">Buy now</a>
27	<a href="#">6E0-44366-00</a> Damper, water seal 2	<a href="#">Buy now</a>
28	<a href="#">6E0-44352-00</a> Impeller	<a href="#">Buy now</a>
29	<a href="#">93604-09066</a> Pin, dowel	<a href="#">Buy now</a>
30	<a href="#">97095-06045</a> Bolt, hexagon	<a href="#">Buy now</a>

## Lower Casing. Drive



Ref	Part	
31	<a href="#">93604-18080</a> Pin. dowel. (647)	<a href="#">Buy now</a>
32	<a href="#">6E0-44328-00</a> Plate	<a href="#">Buy now</a>
33	<a href="#">6E0-44361-00</a> Tube, water S	<a href="#">Buy now</a>
33	<a href="#">6E0-44361-10</a> Tube, water L	<a href="#">Buy now</a>
34	<a href="#">646-44365-00</a> Damper, water seal 1	<a href="#">Buy now</a>
35	<a href="#">6E0-45511-01</a> Shaft, drive S	<a href="#">Buy now</a>
35	<a href="#">6E0-45511-11</a> Shaft, drive L	<a href="#">Buy now</a>
36	<a href="#">90467-08M01</a> Clip (6e0)	<a href="#">Buy now</a>
37	<a href="#">6E0-45551-00</a> Pinion (13t)	<a href="#">Buy now</a>
38	<a href="#">99001-06600</a> Circlip(53l)	<a href="#">Buy now</a>
39	<a href="#">90201-11M49</a> Washer, plate (6e0)	<a href="#">Buy now</a>
40	<a href="#">6E0-45560-00</a> Gear 1 assembly (27t)	<a href="#">Buy now</a>
41	<a href="#">6E0-45570-00</a> Gear 2 assembly (27t)	<a href="#">Buy now</a>
42	<a href="#">90201-13M50</a> Washer, plate (6e0)	<a href="#">Buy now</a>
43	<a href="#">6E0-45631-00</a> Clutch, dog	<a href="#">Buy now</a>

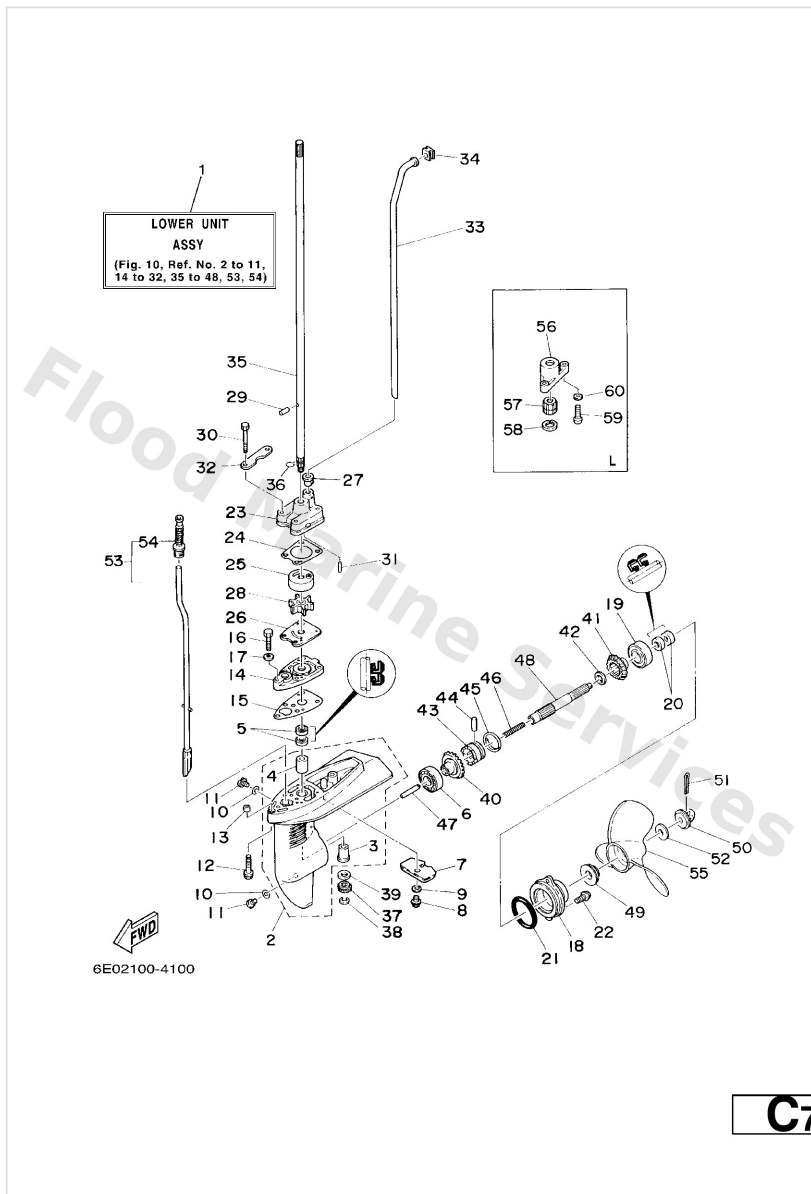
## Lower Casing. Drive



Ref	Part	
44	<a href="#">90250-05046</a> Pin, straight	<a href="#">Buy now</a>
45	<a href="#">654-45633-00</a> Ring, cross pin	<a href="#">Buy now</a>
46	<a href="#">90501-10064</a> Spring, compression 6164563600	<a href="#">Buy now</a>
47	<a href="#">654-45635-00</a> Plunger, shift	<a href="#">Buy now</a>
48	<a href="#">6E0-45611-01</a> Shaft, propeller	<a href="#">Buy now</a>
49	<a href="#">6L5-45987-01</a> Spacer 1	<a href="#">Buy now</a>
50	<a href="#">6L5-45616-00</a> Nut, propeller	<a href="#">Buy now</a>
51	<a href="#">91490-25030</a> Pin, cotter(6I5)	<a href="#">Buy now</a>
52	<a href="#">90201-08M54</a> Washer, plate (6e5)	<a href="#">Buy now</a>
53	<a href="#">6E0-44150-00</a> Shift cam assembly S	<a href="#">Buy now</a>
53	<a href="#">6E0-44150-10</a> Shift cam ass'y L	<a href="#">Buy now</a>
54	<a href="#">6G1-44147-00</a> Boot, shift rod	<a href="#">Buy now</a>
55	<a href="#">6E0-45941-01-EL</a> Propeller (3x7-1/2 x8 -ba) UR	<a href="#">Buy now</a>
55	<a href="#">6E0-45943-01-EL</a> Propeller (3x7-1/2"x7"-ba) UR	<a href="#">Buy now</a>
55	<a href="#">6E0-45949-00-EL</a> Propeller (3x7-1/4 x6-1/2 -ba) UR	<a href="#">Buy now</a>

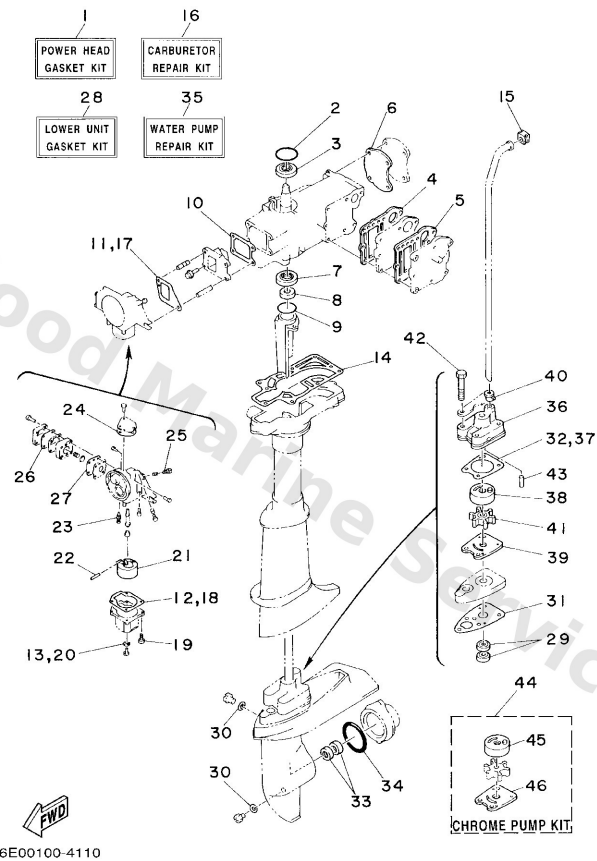


## Lower Casing. Drive



Ref	Part	
56	<a href="#">6E0-45331-00-5B</a> Housing, bearing L	<a href="#">Buy now</a>
57	<a href="#">6E0-45318-01</a> Bushing, drive shaft 3 L	<a href="#">Buy now</a>
58	<a href="#">93420-22M03</a> Cir clip (6e0) L	<a href="#">Buy now</a>
59	<a href="#">97880-05025</a> Screw, panhead (a93) L	<a href="#">Buy now</a>
60	<a href="#">92990-05600</a> Washer, plain (646) L	<a href="#">Buy now</a>

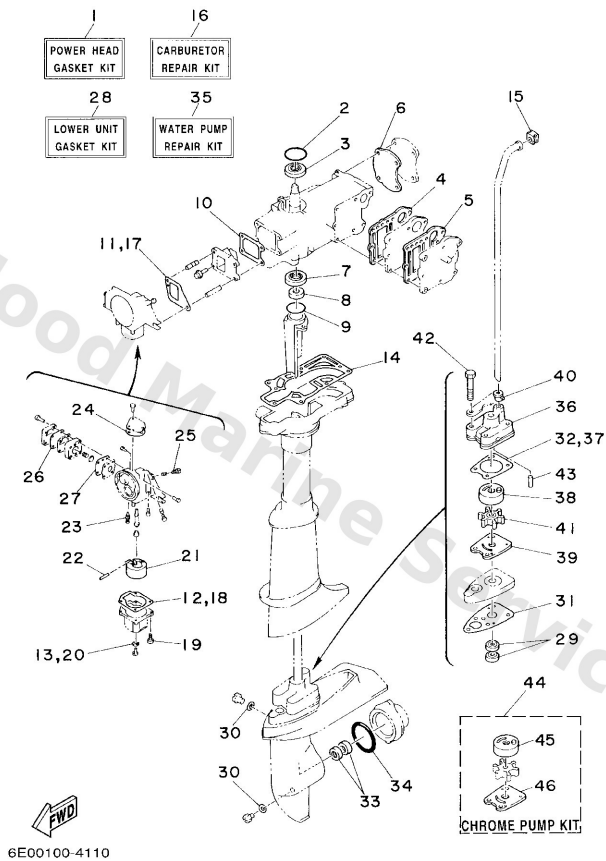
# Repair Kit



**D4**

Ref	Part	
1	<a href="#">6E0-W0001-A4</a> Gasket kit	<a href="#">Buy now</a>
1	<a href="#">6E3-W0001-A4</a> Power head gasket kit	<a href="#">Buy now</a>
2	<a href="#">93210-42159</a> O-ring (647)	<a href="#">Buy now</a>
3	<a href="#">93102-20M25</a> Oil seal (6e0)	<a href="#">Buy now</a>
4	<a href="#">6E0-41112-A1</a> Gasket,inner cover exhaust	<a href="#">Buy now</a>
4	<a href="#">6E3-41112-A1</a> Gasket,inner cover exhaust	<a href="#">Buy now</a>
5	<a href="#">6E0-41114-A1</a> Gasket,outer cover exhaust	<a href="#">Buy now</a>
5	<a href="#">6E3-41114-A1</a> Gasket,outer cover exhaust	<a href="#">Buy now</a>
6	<a href="#">6E0-11193-A1</a> Gasket,head cover	<a href="#">Buy now</a>
6	<a href="#">6E3-11193-A1</a> Gasket,head cover	<a href="#">Buy now</a>
7	<a href="#">93101-20M29</a> Oil seal(6j1)	<a href="#">Buy now</a>
8	<a href="#">93101-10M25</a> Oil seal(6e0)	<a href="#">Buy now</a>
9	<a href="#">93210-31MJ5</a> O-ring	<a href="#">Buy now</a>
10	<a href="#">6E0-13621-A2</a> Gasket, valve seat	<a href="#">Buy now</a>
11	<a href="#">6E0-14198-A0</a> Gasket	<a href="#">Buy now</a>

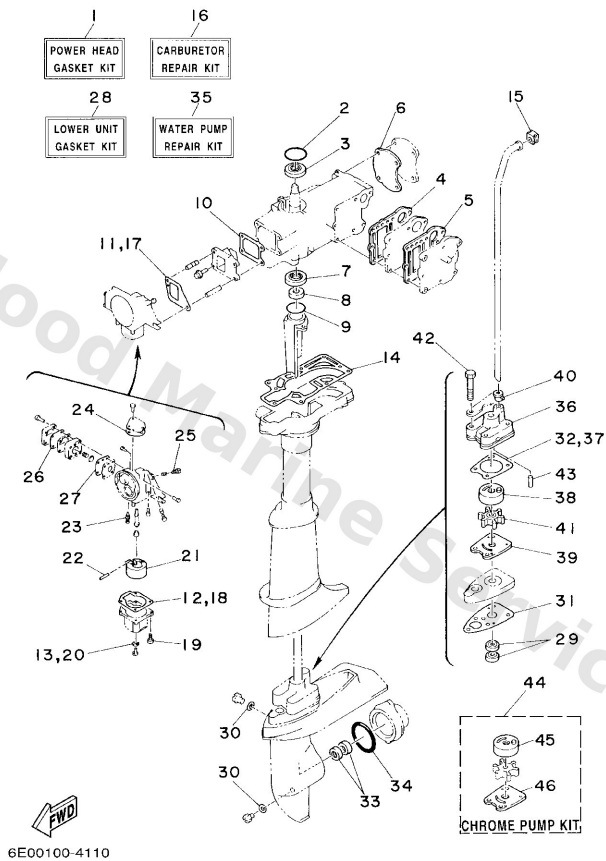
# Repair Kit



**D4**

Ref	Part	
12	<a href="#">6E0-14384-00</a> Gasket, float chamber	<a href="#">Buy now</a>
13	<a href="#">646-14198-01</a> Gasket	<a href="#">Buy now</a>
14	<a href="#">6E0-45113-A1</a> Gasket,upper casing	<a href="#">Buy now</a>
15	<a href="#">646-44365-00</a> Damper, water seal 1	<a href="#">Buy now</a>
16	<a href="#">6E0-W0093-04</a> Carburetor repair kit	<a href="#">Buy now</a>
19	<a href="#">97980-04116</a> Screw, with washer(61b)	<a href="#">Buy now</a>
21	<a href="#">6E7-14385-01</a> Float	<a href="#">Buy now</a>
22	<a href="#">647-14386-00</a> Pin, float	<a href="#">Buy now</a>
23	<a href="#">6F5-14392-00</a> Valve, needle	<a href="#">Buy now</a>
24	<a href="#">6E0-14227-00</a> Gasket	<a href="#">Buy now</a>
25	<a href="#">647-14323-00</a> Screw, air adjusting	<a href="#">Buy now</a>
26	<a href="#">6E0-24471-00</a> Diaphragm	<a href="#">Buy now</a>
27	<a href="#">6E0-24411-00</a> Diaphragm	<a href="#">Buy now</a>
28	<a href="#">6E0-W0001-C1</a> Lower unit gasket kit	<a href="#">Buy now</a>
29	<a href="#">93101-10M14</a> Oil seal	<a href="#">Buy now</a>

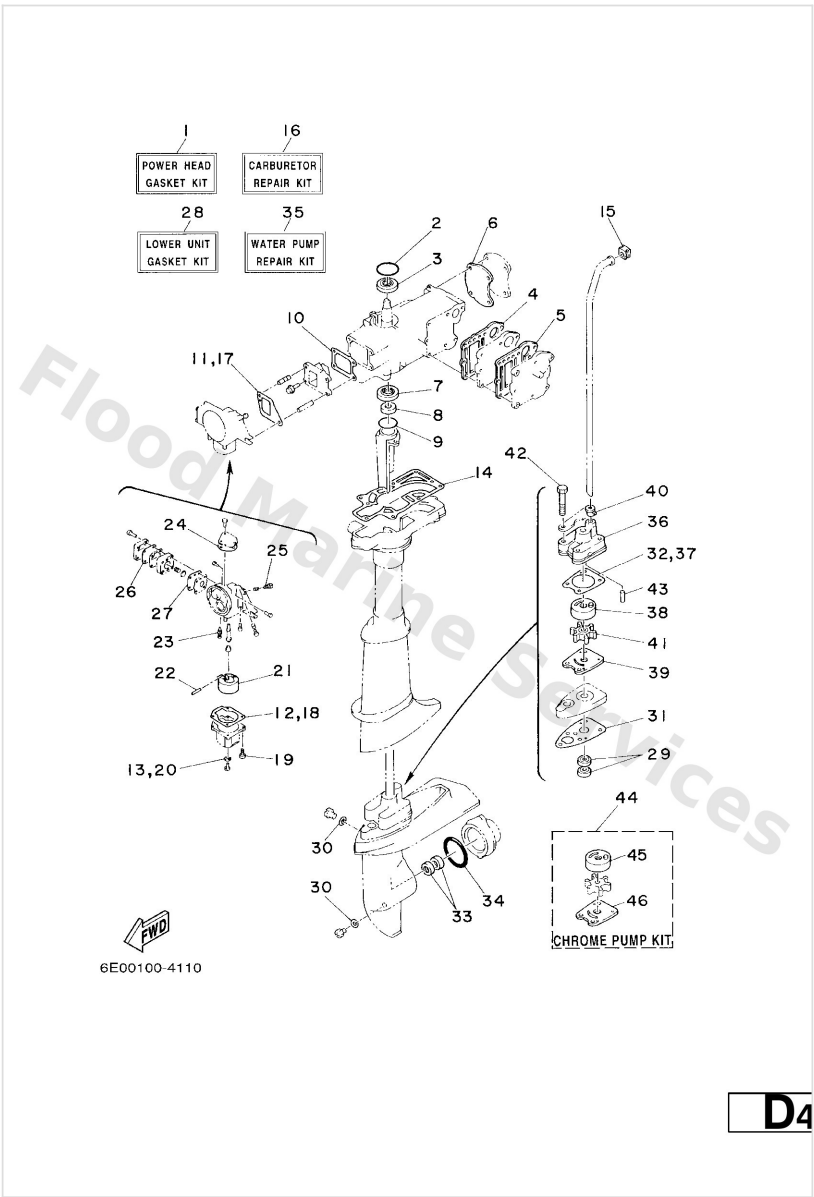
# Repair Kit



**D4**

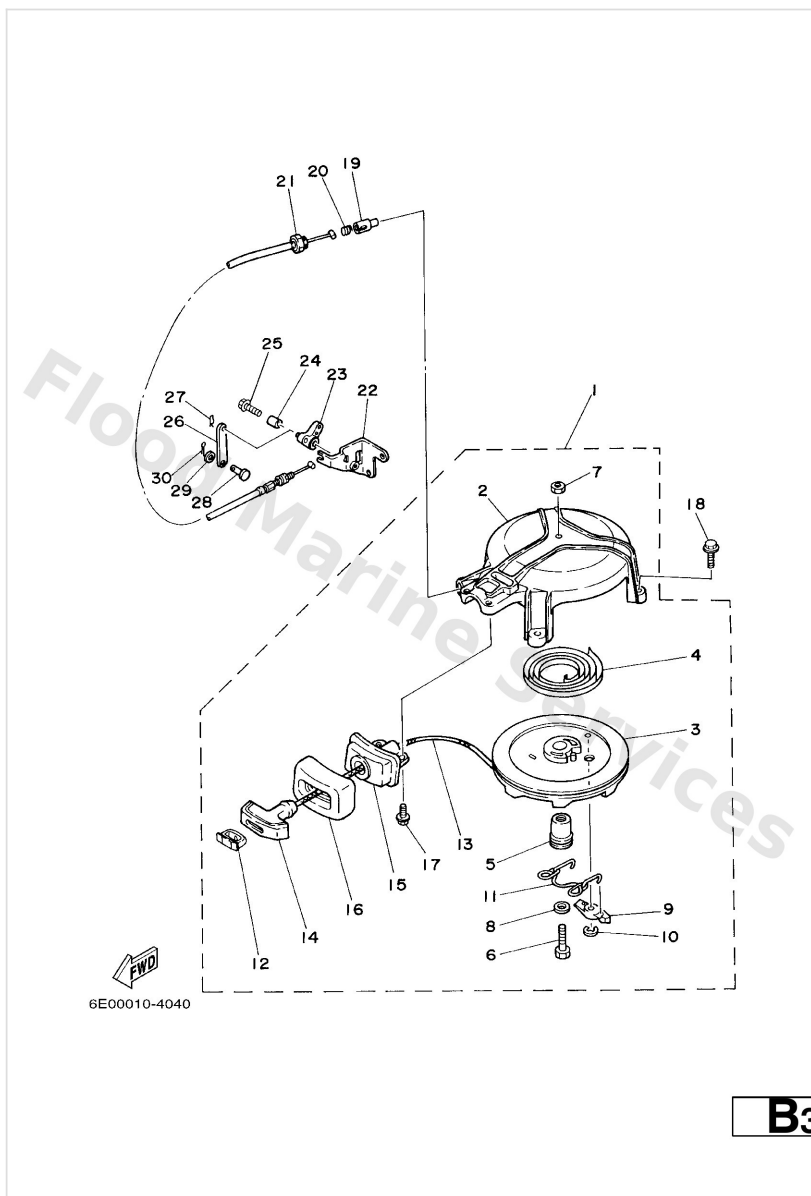
Ref	Part	
30	<a href="#">90430-08020</a> Gasket	<a href="#">Buy now</a>
31	<a href="#">6E0-45315-A0</a> Packing, lower casing	<a href="#">Buy now</a>
32	<a href="#">6E0-44315-A0</a> Gasket, water pump 1	<a href="#">Buy now</a>
33	<a href="#">93101-13M12</a> Oil seal	<a href="#">Buy now</a>
34	<a href="#">93210-48214</a> O-ring	<a href="#">Buy now</a>
35	<a href="#">6E0-W0078-A3</a> Water pump repair kit	<a href="#">Buy now</a>
36	<a href="#">6E0-44311-00</a> Housing, water pump	<a href="#">Buy now</a>
38	<a href="#">6E0-44322-02</a> Insert, cartridge	<a href="#">Buy now</a>
39	<a href="#">6E0-44323-00</a> Outer plate, cartridge	<a href="#">Buy now</a>
40	<a href="#">6E0-44366-00</a> Damper, water seal 2	<a href="#">Buy now</a>
41	<a href="#">6E0-44352-00</a> Impeller	<a href="#">Buy now</a>
42	<a href="#">97095-06045</a> Bolt, hexagon	<a href="#">Buy now</a>
43	<a href="#">93604-18080</a> Pin, dowel. (647)	<a href="#">Buy now</a>
44	<a href="#">6E0-W0078-0A</a> 11 -	<a href="#">Buy now</a>
45	<a href="#">6E0-44322-40</a> Insert, cartridge	<a href="#">Buy now</a>

# Repair Kit



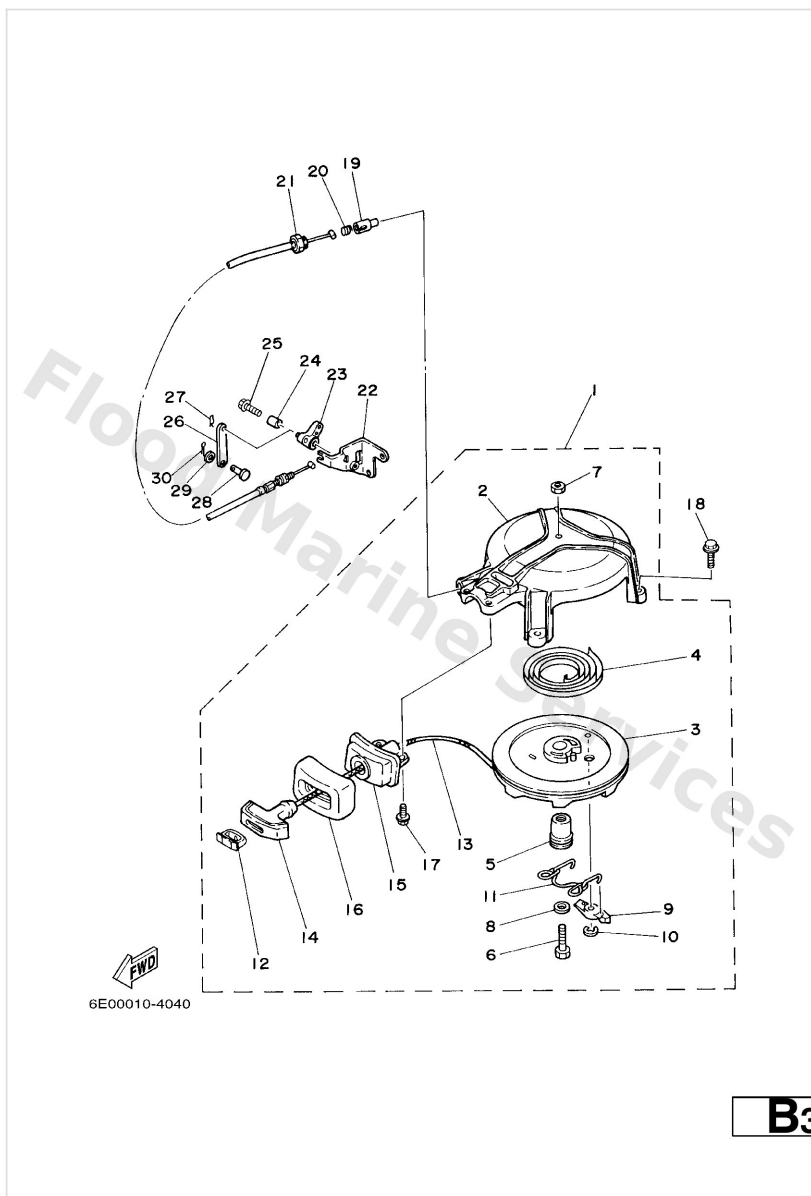
Ref	Part	
46	<a href="#">6E0-44323-40</a> Outer plate, cartridge	<a href="#">Buy now</a>

# Starter



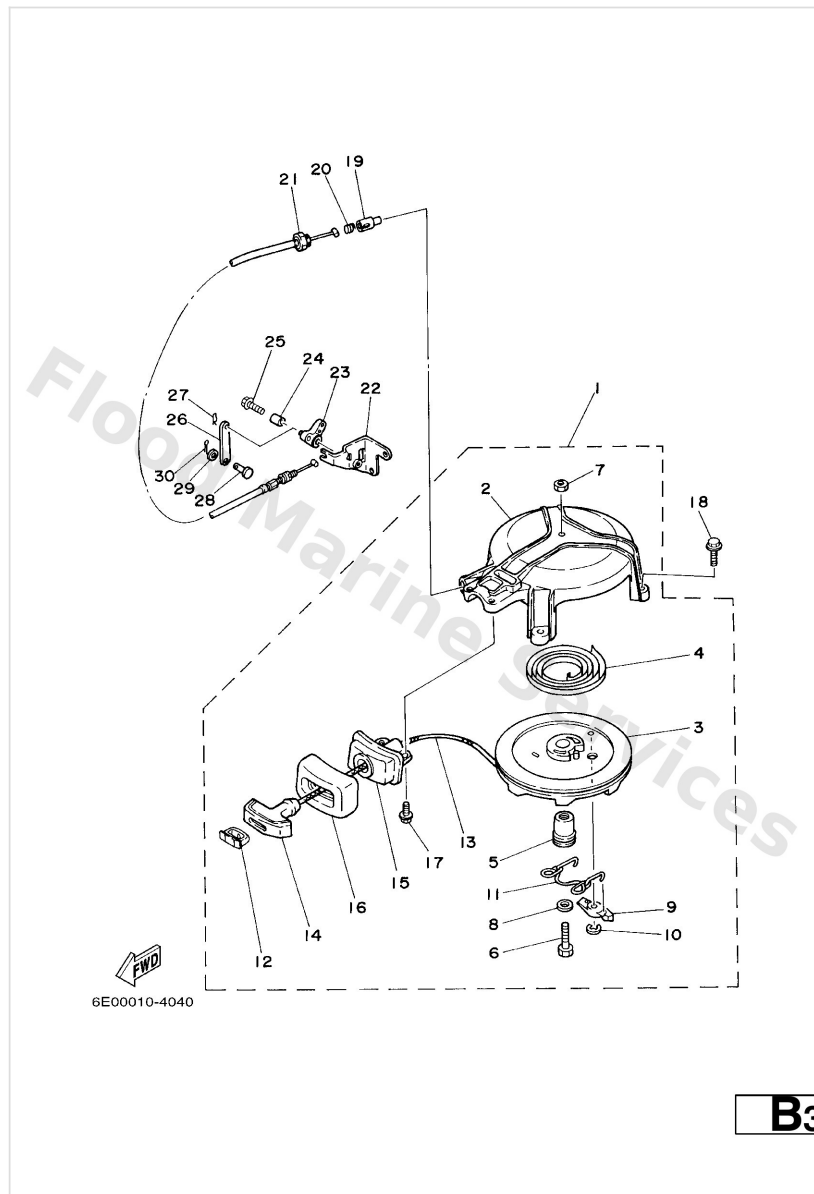
Ref	Part	
1	<a href="#">6E0-15710-72-94</a> Starter assembly	<a href="#">Buy now</a>
1	<a href="#">6E4-15710-73-94</a> Starter assembly	<a href="#">Buy now</a>
2	<a href="#">6E4-15711-71-94</a> Case, starter	<a href="#">Buy now</a>
3	<a href="#">6E0-15714-01</a> Drum, sheave	<a href="#">Buy now</a>
4	<a href="#">90510-08M03</a> Spring, spiral (6g1)	<a href="#">Buy now</a>
5	<a href="#">6E0-15717-00</a> Shaft, starter	<a href="#">Buy now</a>
6	<a href="#">97013-06035</a> Bolt(3rv)	<a href="#">Buy now</a>
7	<a href="#">95303-06600</a> Nut(661)	<a href="#">Buy now</a>
8	<a href="#">90201-06M30</a> Washer, plate (6a1)	<a href="#">Buy now</a>
9	<a href="#">677-15741-01</a> Pawl, drive	<a href="#">Buy now</a>
10	<a href="#">93430-06M02</a> Circlip (689)	<a href="#">Buy now</a>
11	<a href="#">6E0-15705-00</a> Spring drive pawl assembly	<a href="#">Buy now</a>
12	<a href="#">6G1-15779-00</a> Cover	<a href="#">Buy now</a>
13	<a href="#">*</a> item_description	<a href="#">Buy now</a>
14	<a href="#">6G1-15755-00</a> Handle, starter	<a href="#">Buy now</a>

# Starter



Ref	Part	
15	<a href="#">6E0-15758-01</a> Guide, wire	<a href="#">Buy now</a>
15	<a href="#">6E3-15758-01</a> Guide, wire	<a href="#">Buy now</a>
16	<a href="#">6E0-15761-00</a> Seal, rubber 1	<a href="#">Buy now</a>
17	<a href="#">90105-06M14</a> Bolt (6e0)	<a href="#">Buy now</a>
18	<a href="#">95895-06020</a> Bolt, flange(jk3)	<a href="#">Buy now</a>
19	<a href="#">656-15748-00</a> Plunger, starter stop	<a href="#">Buy now</a>
20	<a href="#">90501-10227</a> Spring, comprrshion(656)	<a href="#">Buy now</a>
21	<a href="#">6E4-15770-70</a> Wire comp. starter stop	<a href="#">Buy now</a>
22	<a href="#">6E0-15772-71</a> Stay 2	<a href="#">Buy now</a>
22	<a href="#">6E4-15772-71</a> Stay 2	<a href="#">Buy now</a>
23	<a href="#">6E4-15746-70</a> Arm	<a href="#">Buy now</a>
24	<a href="#">90387-06504</a> Collar(650)	<a href="#">Buy now</a>
25	<a href="#">90119-06M18</a> Bolt, with washer(61n)	<a href="#">Buy now</a>
26	<a href="#">6E4-15747-70</a> Link	<a href="#">Buy now</a>
27	<a href="#">90468-10005</a> Pin, hair 6264123500	<a href="#">Buy now</a>

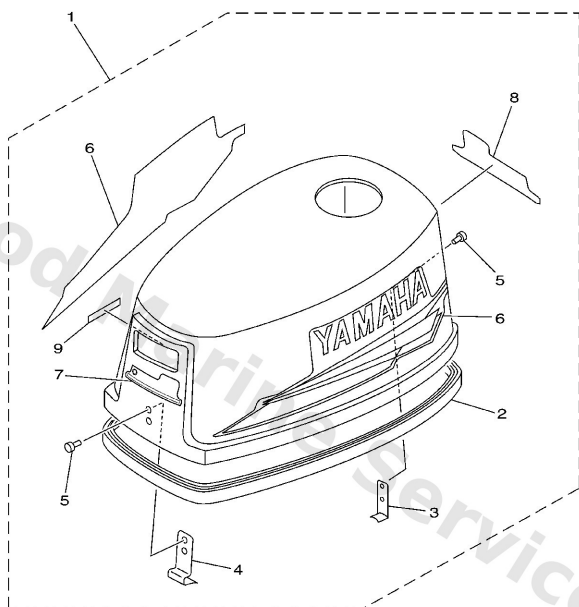
# Starter



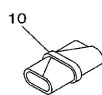
Ref	Part	
28	<a href="#">91790-05010</a> Pin (6e4)	<a href="#">Buy now</a>
29	<a href="#">90202-05088</a> Washer, plate (666)	<a href="#">Buy now</a>
30	<a href="#">91490-16010</a> Pin, cotter	<a href="#">Buy now</a>



# Top Cowling



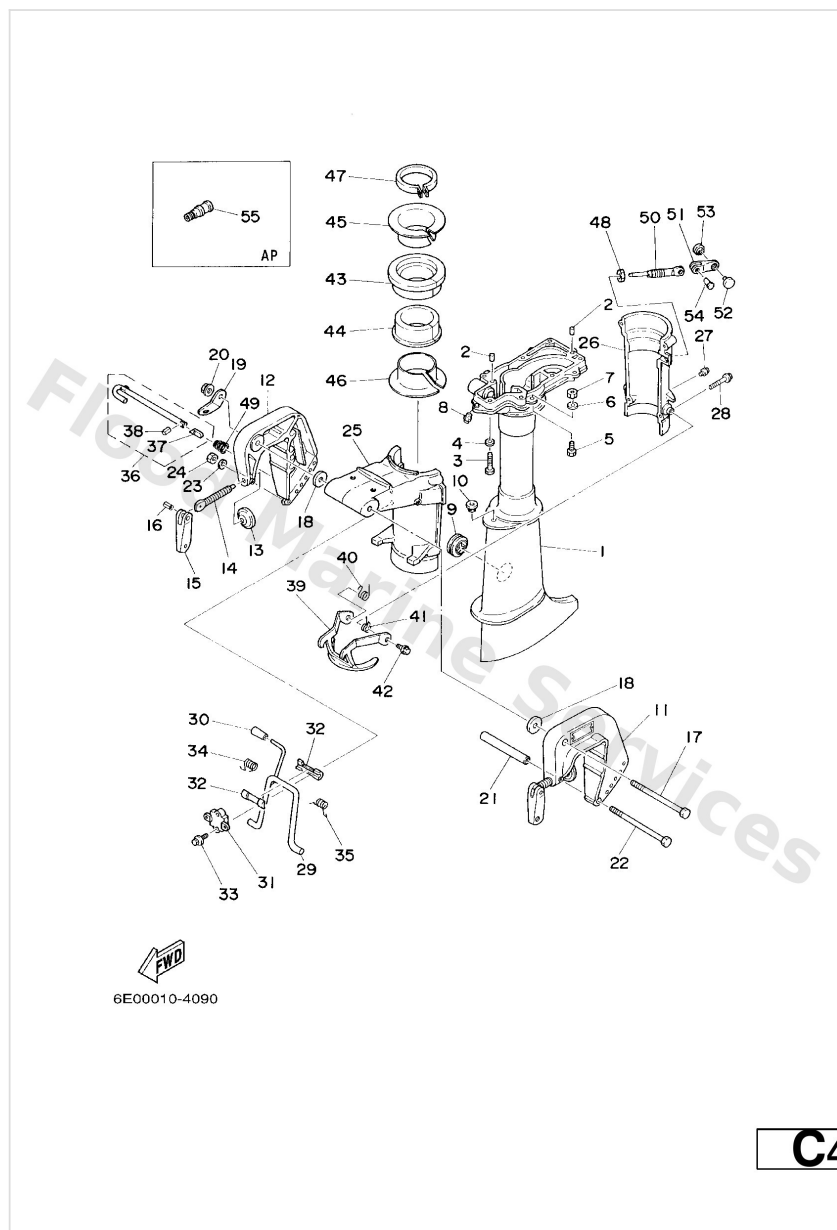
  
6E02300-3010



**A4**

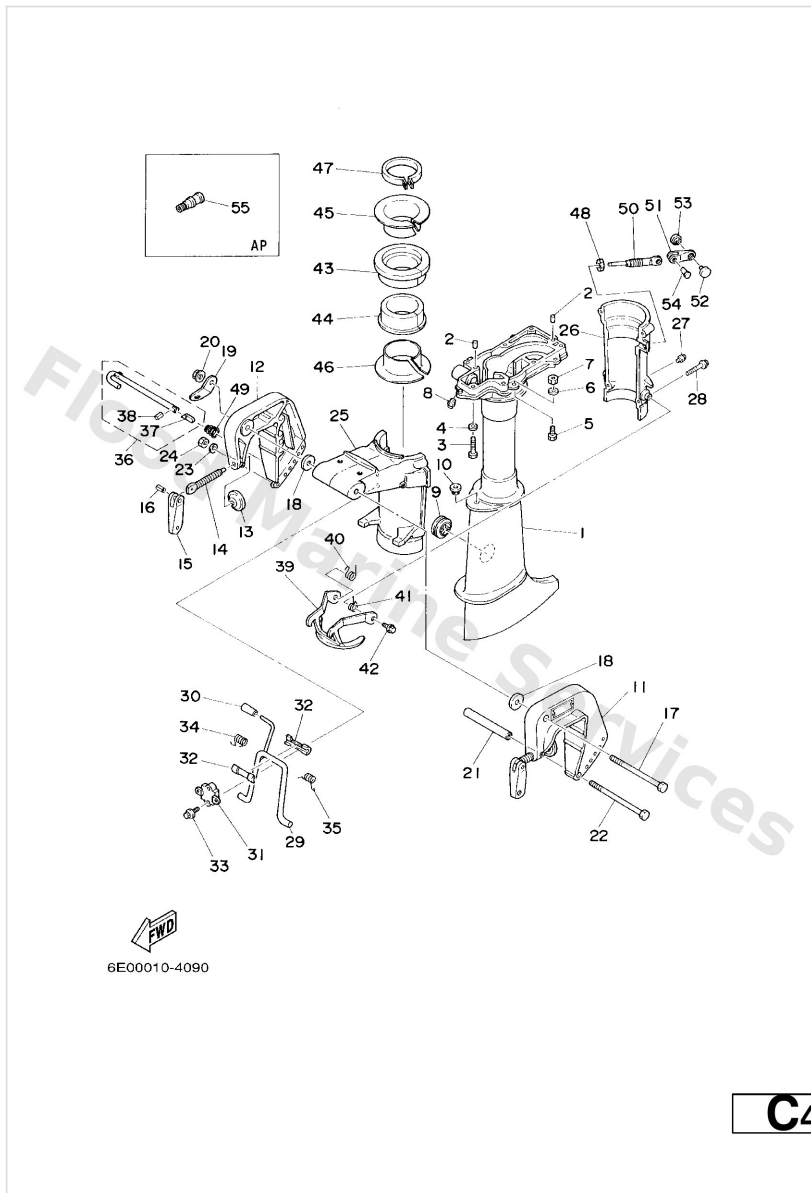
Ref	Part	
1	<a href="#">6E0-42610-40-4D</a> Top Cowling assembly	<a href="#">Buy now</a>
2	<a href="#">6E0-42615-00</a> Seal	<a href="#">Buy now</a>
3	<a href="#">6E0-42647-01</a> Holder, clamp band	<a href="#">Buy now</a>
4	<a href="#">6E0-42651-02</a> Hook	<a href="#">Buy now</a>
5	<a href="#">90266-04M00</a> Rivet 2 (662)	<a href="#">Buy now</a>
6	<a href="#">6E0-W0070-14</a> Graphic Set	<a href="#">Buy now</a>
7	<a href="#">6E0-42677-20</a> Graphic, rear	<a href="#">Buy now</a>
7	<a href="#">6E3-42677-20</a> Graphic, rear	<a href="#">Buy now</a>
8	<a href="#">6E0-42678-12</a> Graphic, rear	<a href="#">Buy now</a>
8	<a href="#">6E3-42678-12</a> Graphic, rear	<a href="#">Buy now</a>
9	<a href="#">6E0-44191-11</a> Indicator, shift	<a href="#">Buy now</a>
10	<a href="#">656-W2810-02</a> Tool kit	<a href="#">Buy now</a>

# Upper Casing . Bracket



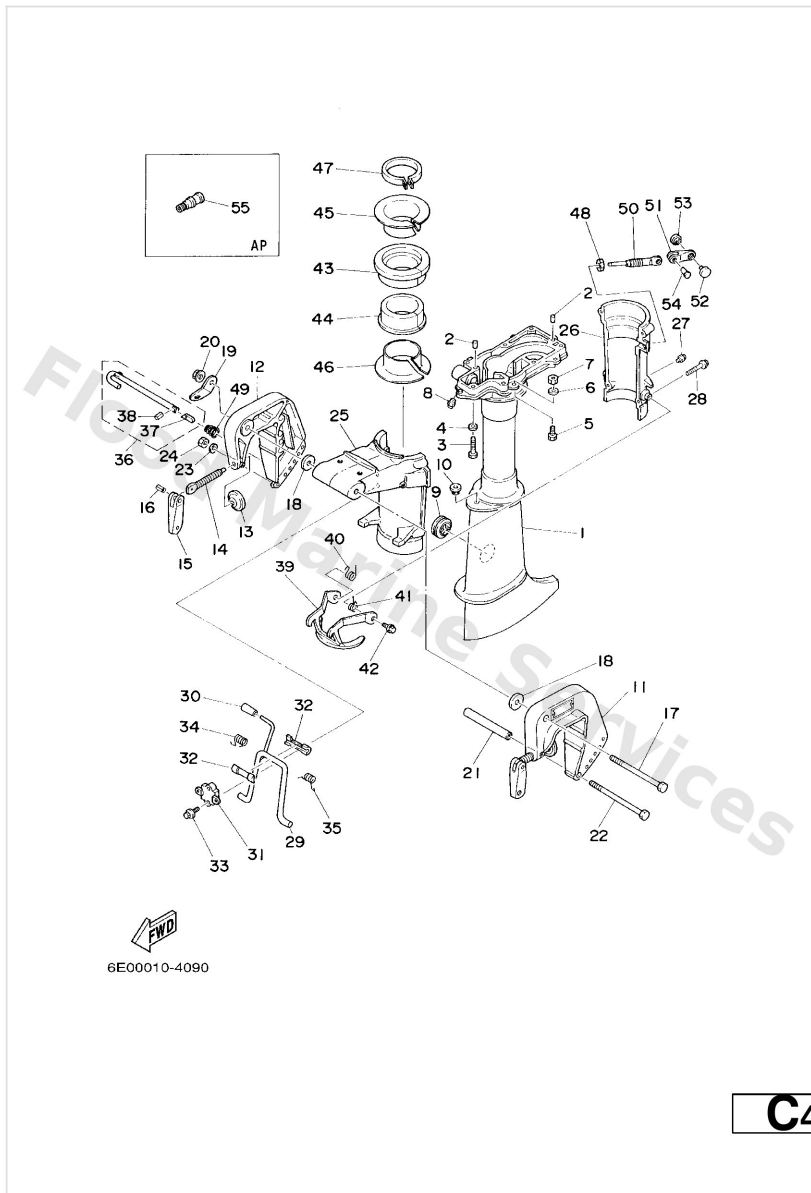
Ref	Part	
1	<a href="#">6E0-45111-02-4D</a> Casing, upper S	<a href="#">Buy now</a>
1	<a href="#">6E0-45111-12-4D</a> Casing, upper L	<a href="#">Buy now</a>
2	<a href="#">93606-12019</a> Pin, dowel (614)	<a href="#">Buy now</a>
3	<a href="#">97095-06030</a> Bolt(jf7)	<a href="#">Buy now</a>
4	<a href="#">92995-06600</a> Washer, plain (646)	<a href="#">Buy now</a>
5	<a href="#">97095-06016</a> Bolt, hexagon deep recess	<a href="#">Buy now</a>
7	<a href="#">95380-06700</a> Nut	<a href="#">Buy now</a>
8	<a href="#">93700-06M03</a> Nipple, grease(6a1)	<a href="#">Buy now</a>
9	<a href="#">647-45151-01</a> Cover, upper casing	<a href="#">Buy now</a>
10	<a href="#">90480-10M13</a> Grommet (6e0)	<a href="#">Buy now</a>
11	<a href="#">6E0-43111-02-4D</a> Bracket, clamp 1	<a href="#">Buy now</a>
12	<a href="#">6E0-43112-01-4D</a> Bracket, clamp 2	<a href="#">Buy now</a>
13	<a href="#">620-43114-00</a> Pad, transom clamp	<a href="#">Buy now</a>
14	<a href="#">6E0-43116-01</a> Screw, transom clamp	<a href="#">Buy now</a>
15	<a href="#">6E0-43118-01</a> Handle, transom clamp	<a href="#">Buy now</a>

## Upper Casing . Bracket



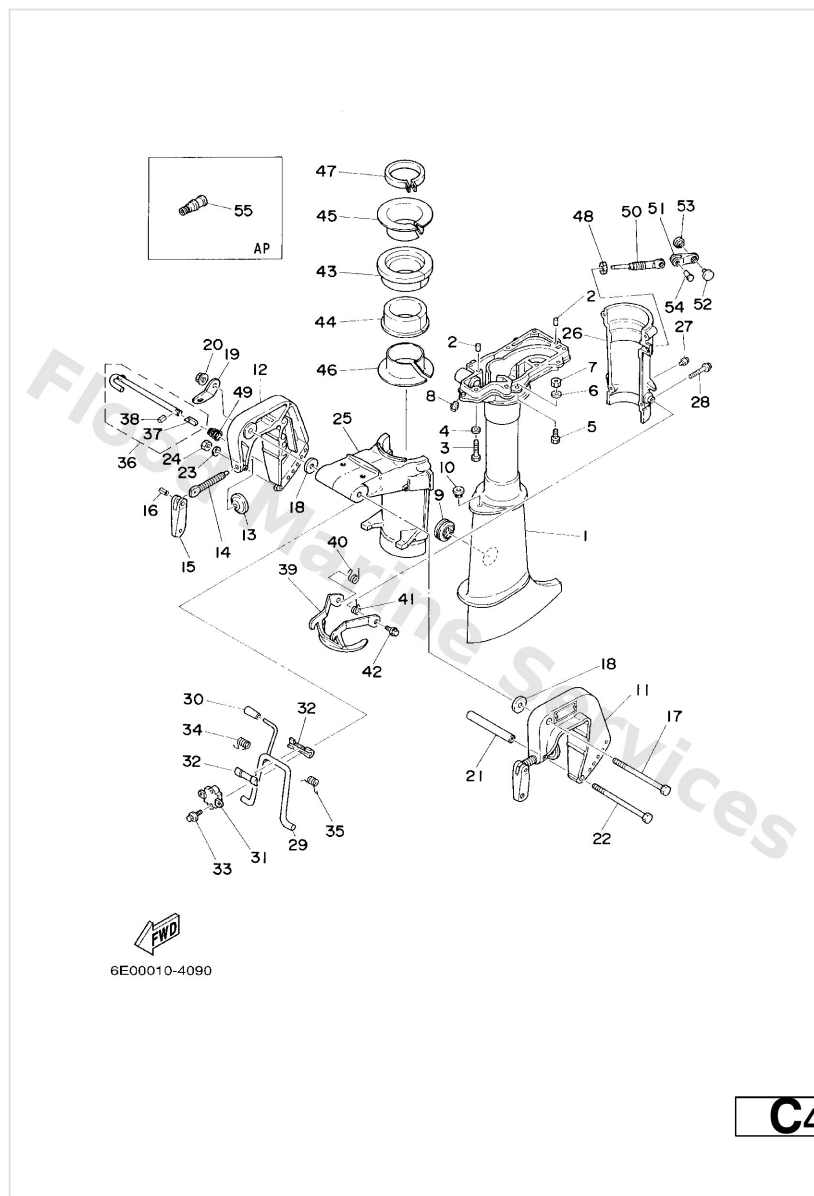
Ref	Part	
16	<a href="#">90243-04M01</a> Pin(6a1)	<a href="#">Buy now</a>
17	<a href="#">90101-08M07</a> Bolt(6e0)	<a href="#">Buy now</a>
18	<a href="#">90201-08M03</a> Washer, plate(6e0)	<a href="#">Buy now</a>
19	<a href="#">6A1-43113-01</a> Plate, clamp bracket	<a href="#">Buy now</a>
20	<a href="#">90185-08057</a> Nut, nylon (6j8)	<a href="#">Buy now</a>
21	<a href="#">90387-06M11</a> Collar	<a href="#">Buy now</a>
22	<a href="#">90101-06335</a> Bolt, hexagon (624)	<a href="#">Buy now</a>
23	<a href="#">92990-06600</a> Washer, plain (646)	<a href="#">Buy now</a>
24	<a href="#">95380-06600</a> Nut(661)	<a href="#">Buy now</a>
25	<a href="#">6E0-43311-04-4D</a> Bracket, swivel 1	<a href="#">Buy now</a>
26	<a href="#">6E0-43312-02-4D</a> Bracket, swivel 2	<a href="#">Buy now</a>
28	<a href="#">95895-06035</a> Bolt, flange(4nx)	<a href="#">Buy now</a>
29	<a href="#">6E0-43181-00</a> Lever, tilt stop 1	<a href="#">Buy now</a>
30	<a href="#">6E0-43632-00</a> Knob, tilt	<a href="#">Buy now</a>
31	<a href="#">6E0-43313-00-94</a> Bracket, swivel 3	<a href="#">Buy now</a>

# Upper Casing . Bracket



Ref	Part	
32	<a href="#">620-43189-00</a> Bushing	<a href="#">Buy now</a>
33	<a href="#">95895-06020</a> Bolt, flange(jk3)	<a href="#">Buy now</a>
34	<a href="#">90508-16020</a> Spring 6474319800	<a href="#">Buy now</a>
35	<a href="#">90508-16021</a> Spring 6474318800	<a href="#">Buy now</a>
36	<a href="#">6E0-43160-01</a> Tilt rod assembly	<a href="#">Buy now</a>
37	<a href="#">689-43165-00</a> Plate, tilt lock	<a href="#">Buy now</a>
38	<a href="#">91690-30008</a> Pin. spring(656)	<a href="#">Buy now</a>
39	<a href="#">6E0-43614-00-5B</a> Plate, tilt lock	<a href="#">Buy now</a>
40	<a href="#">90508-14M10</a> Spring, torsion (6e0)	<a href="#">Buy now</a>
41	<a href="#">90508-14M11</a> Spring, torsion (6e0)	<a href="#">Buy now</a>
42	<a href="#">95895-06010</a> Bolt, flange(7ht)	<a href="#">Buy now</a>
43	<a href="#">6E0-42537-02</a> Bushing, pivot shaft	<a href="#">Buy now</a>
44	<a href="#">6E0-42538-02</a> Bushing, pivot shaft	<a href="#">Buy now</a>
45	<a href="#">6E0-42539-00</a> Bushing, pivot shaft	<a href="#">Buy now</a>
46	<a href="#">6E0-42549-00</a> Bushing, pivot shaft	<a href="#">Buy now</a>

## Upper Casing . Bracket



Ref	Part	
47	<a href="#">6E0-42528-03</a> Plate, friction	<a href="#">Buy now</a>
48	<a href="#">95380-08600</a> Nut (661)	<a href="#">Buy now</a>
49	<a href="#">90502-08M05</a> Spring, conical(6e0)	<a href="#">Buy now</a>
50	<a href="#">6L5-42529-01</a> Screw, friction piece	<a href="#">Buy now</a>
51	<a href="#">6L5-42561-00</a> Knob, steering lock	<a href="#">Buy now</a>
52	<a href="#">6L5-44196-00</a> Indicator 3	<a href="#">Buy now</a>
53	<a href="#">6L5-44197-00</a> Indicator 4	<a href="#">Buy now</a>
54	<a href="#">90266-04M05</a> Rivet(6I5)	<a href="#">Buy now</a>
55	<a href="#">626-28193-01-94</a> Plug, water check AP D)15MM	<a href="#">Buy now</a>

# Disclaimer

This document is provided for convenience only. It is **not** an official Yamaha publication and is **not supplied, endorsed, or approved** by Yamaha Motor Co., Ltd.

Reasonable efforts are made to keep information accurate; however diagrams, part references, supersessions, descriptions, and applicability may contain errors or omissions. Specifications and part availability may change without notice.

You are responsible for confirming the correct parts for your engine (including model code, year, serial range, and any superseded part numbers) before ordering or fitting.