



# Yamaha Digital Network Control 2010

## Parts Manual

[www.floodmarine.co.uk](http://www.floodmarine.co.uk)

+44 2882 246 539

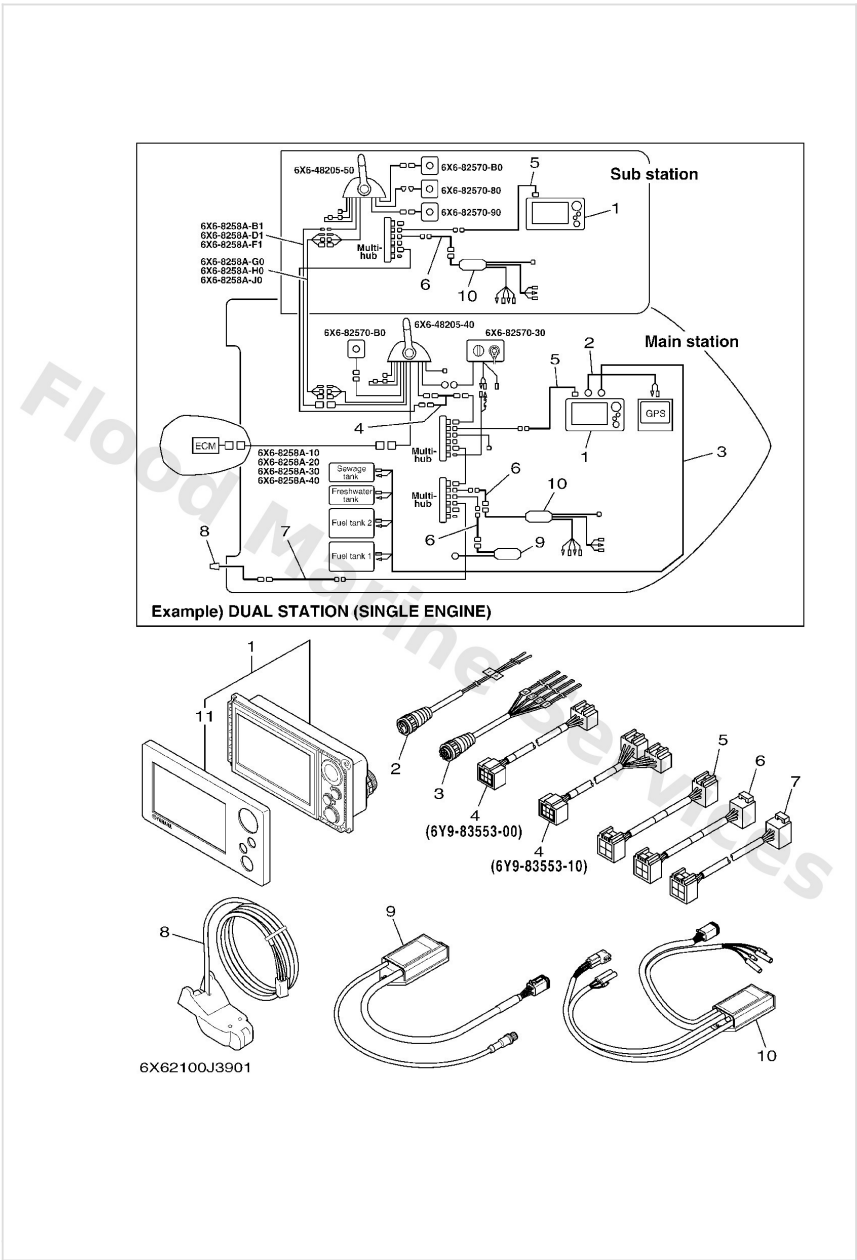
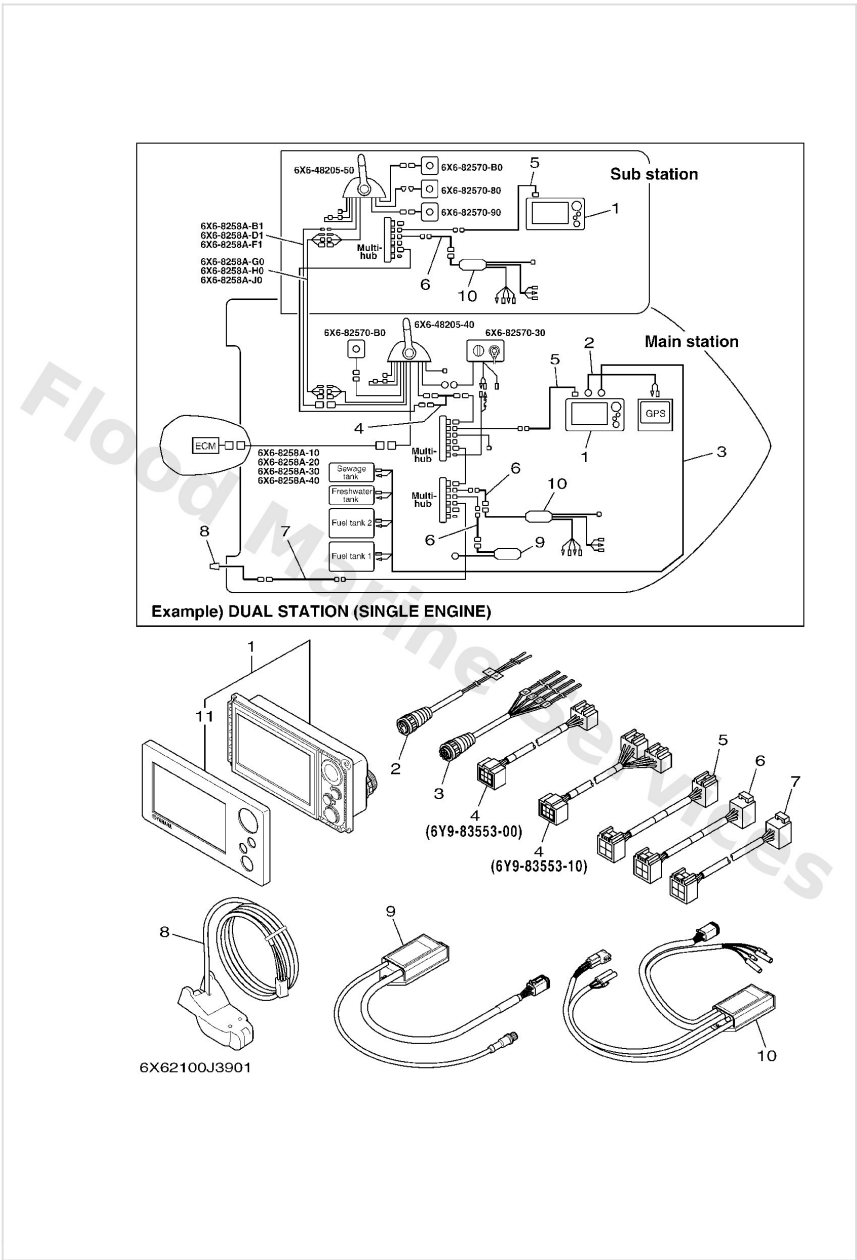
Authorised Yamaha Dealers

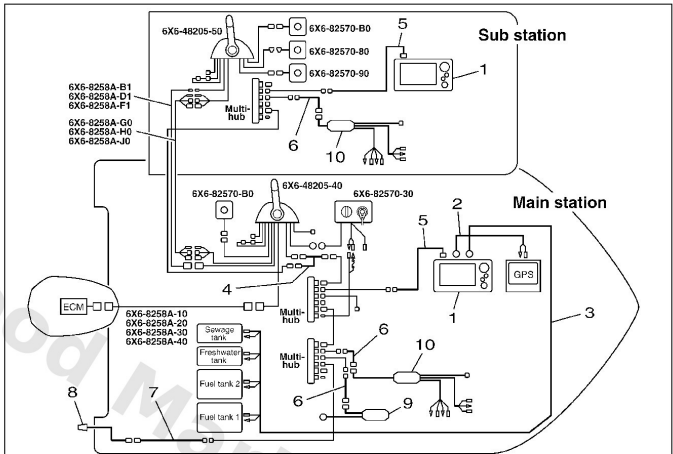


# Contents

<b>COMMAND LINK PLUS</b>	3
<b>DBW REMOTE CONTROL 1 (SINGLE)</b>	4
<b>DBW REMOTE CONTROL 2 (TWIN)</b>	9
<b>DBW REMOTE CONTROL 3 (TRIPLE)</b>	15
<b>DBW REMOTE CONTROL 4 (QUAD)</b>	22
<b>DBW REMOTE CONTROL 5 (QUAD)</b>	28
<b>DBW REMOTE CONTROL 6 (6X7)</b>	29
<b>DIGITAL NETWORK GAUGE 1</b>	34
<b>DIGITAL NETWORK GAUGE 2</b>	35
<b>DIGITAL NETWORK GAUGE 3</b>	38
<b>DIGITAL NETWORK GAUGE 4</b>	39
<b>DIGITAL NETWORK GAUGE 5</b>	40
<b>DIGITAL NETWORK GAUGE 6</b>	41
<b>DIGITAL NETWORK GAUGE 7</b>	42
<b>ELECTRICAL WIRE HARNESS</b>	43
<b>LAYOUT CHART 1 (SINGLE)</b>	44
<b>LAYOUT CHART 2 (SINGLE)</b>	45
<b>LAYOUT CHART 3 (TWIN)</b>	46
<b>LAYOUT CHART 4 (TWIN)</b>	47
<b>LAYOUT CHART 5 (TRIPLE)</b>	48
<b>LAYOUT CHART 6 (TRIPLE)</b>	49
<b>LAYOUT CHART 7 (QUAD)</b>	50
<b>LAYOUT CHART 8 (6X7)</b>	51
<b>OPTIONAL PARTS 1</b>	52
<b>OPTIONAL PARTS 2</b>	53
<b>SWITCH &amp; PANEL 1 (SINGLE)</b>	54
<b>SWITCH &amp; PANEL 10</b>	55
<b>SWITCH &amp; PANEL 11 (QUAD)</b>	56
<b>SWITCH &amp; PANEL 12 (QUAD)</b>	57
<b>SWITCH &amp; PANEL 13 (QUAD)</b>	59
<b>SWITCH &amp; PANEL 14 (6X7)</b>	60
<b>SWITCH &amp; PANEL 2 (SINGLE)</b>	61
<b>SWITCH &amp; PANEL 3 (SINGLE)</b>	62
<b>SWITCH &amp; PANEL 4 (TWIN)</b>	63
<b>SWITCH &amp; PANEL 5 (TWIN)</b>	64
<b>SWITCH &amp; PANEL 6 (TWIN)</b>	65
<b>SWITCH &amp; PANEL 7 (TRIPLE)</b>	66
<b>SWITCH &amp; PANEL 8 (TRIPLE)</b>	67
<b>SWITCH &amp; PANEL 9 (TRIPLE)</b>	68

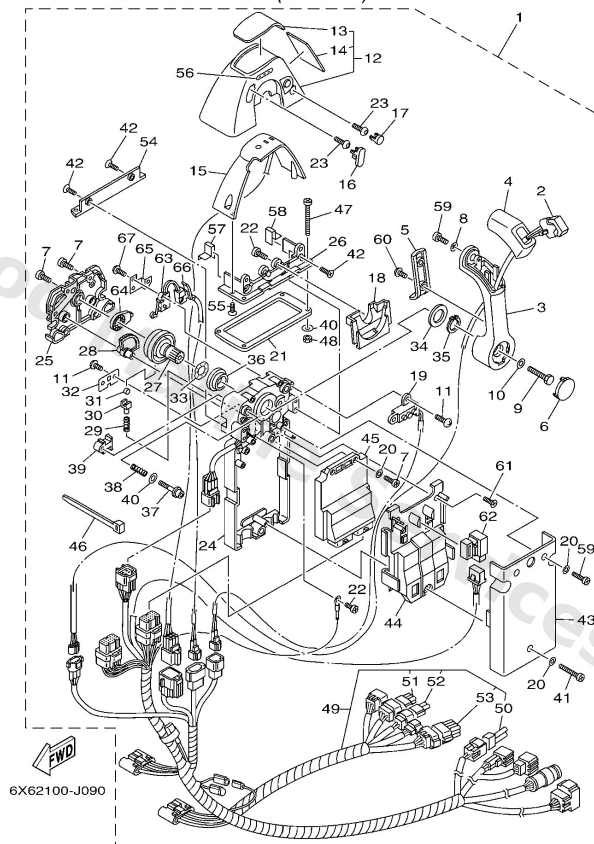
Command Link Plus



	Ref	Part	
 <p>Example) DUAL STATION (SINGLE ENGINE)</p>	1	<a href="#">6Y98371000</a> Multi display assembly UN	<a href="#">Buy now</a>
	2	<a href="#">6Y98356N00</a> Wire, lead FOR GPS	<a href="#">Buy now</a>
	3	<a href="#">6Y98356N10</a> Wire, lead FOR TANKS	<a href="#">Buy now</a>
	4	<a href="#">6Y98355300</a> Wire, lead UR 1 STATION	<a href="#">Buy now</a>
	4	<a href="#">6Y98355310</a> Main bus y-split harness UR 2 STATION	<a href="#">Buy now</a>
	5	<a href="#">6Y98355340</a> Wire, lead UN FOR MULTI DISPLAY	<a href="#">Buy now</a>
	6	<a href="#">6Y98355350</a> Wire, lead UN FOR INTERFACE UNIT	<a href="#">Buy now</a>
	7	<a href="#">6Y98355360</a> Wire, lead FOR SENSOR ASSY	<a href="#">Buy now</a>
	8	<a href="#">6Y98368800</a> Sensor assembly	<a href="#">Buy now</a>
	9	<a href="#">6Y98A2D000</a> Interface Unit GATEWAY	<a href="#">Buy now</a>
	10	<a href="#">6Y98A2D010</a> Analog gauge interface UN ANALOGUE GAUGE	<a href="#">Buy now</a>
Yamaha Digital Network Control 2010 Parts Manual	11	<a href="#">6Y98351200</a> Cover, front	<a href="#">Buy now</a>

## Dbw Remote Control 1 (Single)

6X6 REMOTE CONTROL (SINGLE)

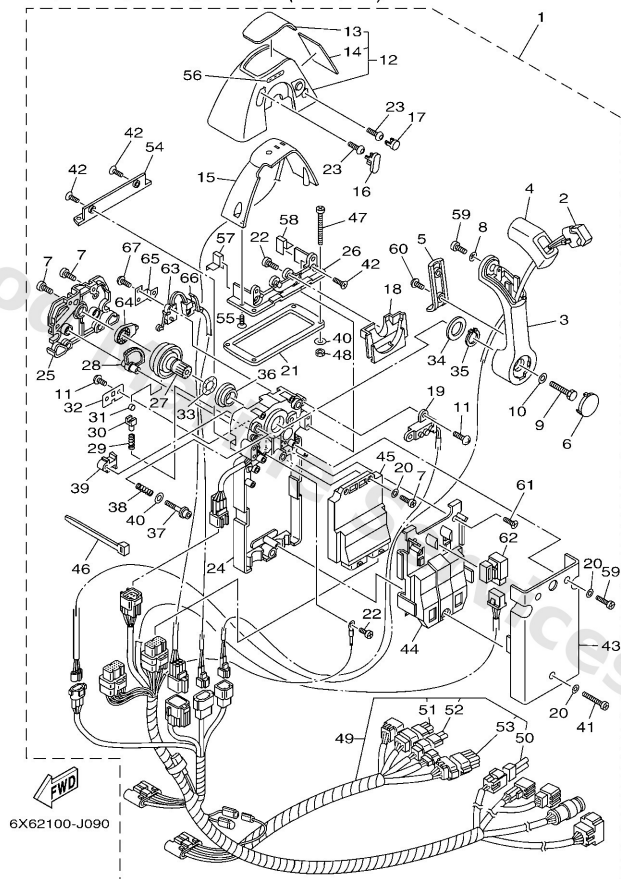


Ref	Part	
1	<a href="#">6X64820530</a> Ctrl Sgl Std NOT FOR SALE	<a href="#">Buy now</a>
1	<a href="#">6X64820540</a> Remote Control assembly (Single) NOT FOR SALE	<a href="#">Buy now</a>
1	<a href="#">6X64820550</a> Remote Control assembly (Single) NOT FOR SALE	<a href="#">Buy now</a>
2	<a href="#">6X68256300</a> Trim & tilt switch assembly	<a href="#">Buy now</a>
3	<a href="#">6X64822100</a> Lever, control	<a href="#">Buy now</a>
4	<a href="#">6X64822200</a> Grip, control lever	<a href="#">Buy now</a>
5	<a href="#">6X64822400</a> Cover, control lever	<a href="#">Buy now</a>
6	<a href="#">6X64822410</a> Cover, control lever	<a href="#">Buy now</a>
7	<a href="#">9858005014</a> Screw, pan head(3yl)	<a href="#">Buy now</a>
8	<a href="#">9299005300</a> Washer, tooth	<a href="#">Buy now</a>
9	<a href="#">6X64817100</a> Bolt	<a href="#">Buy now</a>
10	<a href="#">9299008600</a> Washer, plain (663)	<a href="#">Buy now</a>
11	<a href="#">EL84812700</a> Screw 1	<a href="#">Buy now</a>
12	<a href="#">6X64811904</a> Cover	<a href="#">Buy now</a>
13	<a href="#">6X64821530</a> Graphic	<a href="#">Buy now</a>



## Dbw Remote Control 1 (Single)

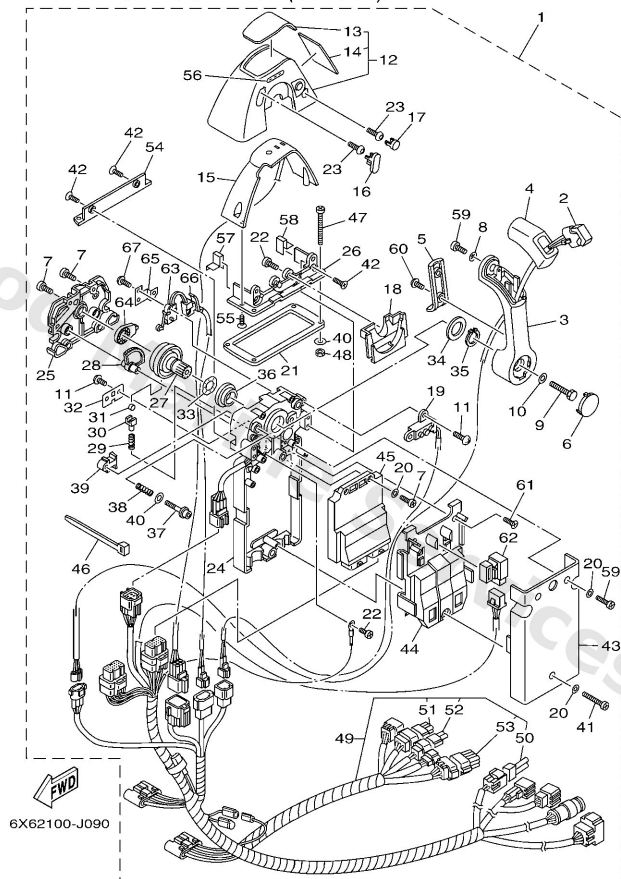
6X6 REMOTE CONTROL (SINGLE)



Ref	Part	
14	<a href="#">6X64821600</a> Graphic	<a href="#">Buy now</a>
15	<a href="#">6X68430100</a> Pilot light assembly 1	<a href="#">Buy now</a>
16	<a href="#">6X64816700</a> Plug	<a href="#">Buy now</a>
17	<a href="#">6X64816750</a> Plug	<a href="#">Buy now</a>
18	<a href="#">6X64821900</a> Cover, lead	<a href="#">Buy now</a>
19	<a href="#">6X68259E00</a> Switch assembly	<a href="#">Buy now</a>
20	<a href="#">9299005200</a> Ybs66-5 washer, plain	<a href="#">Buy now</a>
21	<a href="#">6X64817600</a> Grommet	<a href="#">Buy now</a>
22	<a href="#">9858004010</a> Screw, pan head (e56)	<a href="#">Buy now</a>
23	<a href="#">92D8005016</a> Bolt, socket head	<a href="#">Buy now</a>
24	<a href="#">6X6481A001</a> Remo-Con. Case assembly	<a href="#">Buy now</a>
25	<a href="#">6X64821200</a> Back plate 1	<a href="#">Buy now</a>
26	<a href="#">6X64814410</a> Plate, stopper 2	<a href="#">Buy now</a>
27	<a href="#">6X64824201</a> Shaft, drive	<a href="#">Buy now</a>
28	<a href="#">6X64823301</a> Gear 2	<a href="#">Buy now</a>

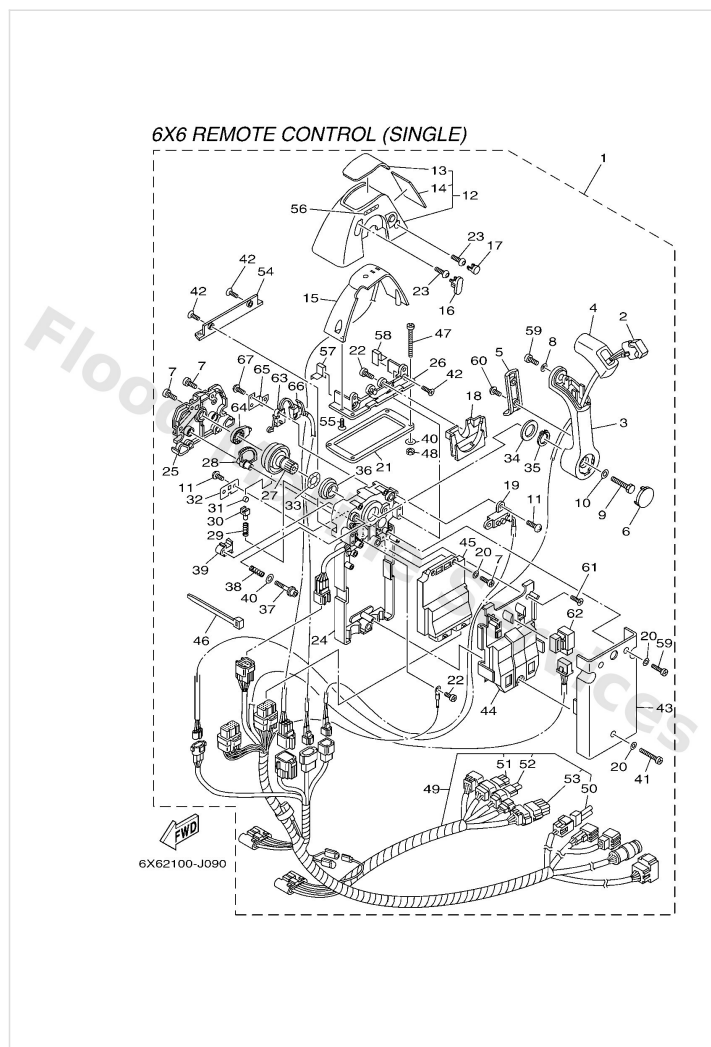
## Dbw Remote Control 1 (Single)

6X6 REMOTE CONTROL (SINGLE)



Ref	Part	
29	<a href="#">6X64823800</a> Spring, detent	<a href="#">Buy now</a>
30	<a href="#">6X64823700</a> Adaptor	<a href="#">Buy now</a>
31	<a href="#">6X64823600</a> Roller, detent	<a href="#">Buy now</a>
32	<a href="#">6X64818900</a> Retainer	<a href="#">Buy now</a>
33	<a href="#">7034819800</a> Washer, wave 3	<a href="#">Buy now</a>
34	<a href="#">6X64819300</a> Washer 3	<a href="#">Buy now</a>
35	<a href="#">6X64811800</a> Clip, shift lever	<a href="#">Buy now</a>
36	<a href="#">6X64823400</a> Bushing 1	<a href="#">Buy now</a>
37	<a href="#">6X64826700</a> Bolt set	<a href="#">Buy now</a>
38	<a href="#">6X64815800</a> Spring 1	<a href="#">Buy now</a>
39	<a href="#">6X64826400</a> Friction, throttle	<a href="#">Buy now</a>
40	<a href="#">7044828700</a> Washer 1	<a href="#">Buy now</a>
41	<a href="#">6X68114500</a> Screw 1	<a href="#">Buy now</a>
42	<a href="#">9878005014</a> Screw 3	<a href="#">Buy now</a>
43	<a href="#">6X64821300</a> Back plate 2	<a href="#">Buy now</a>

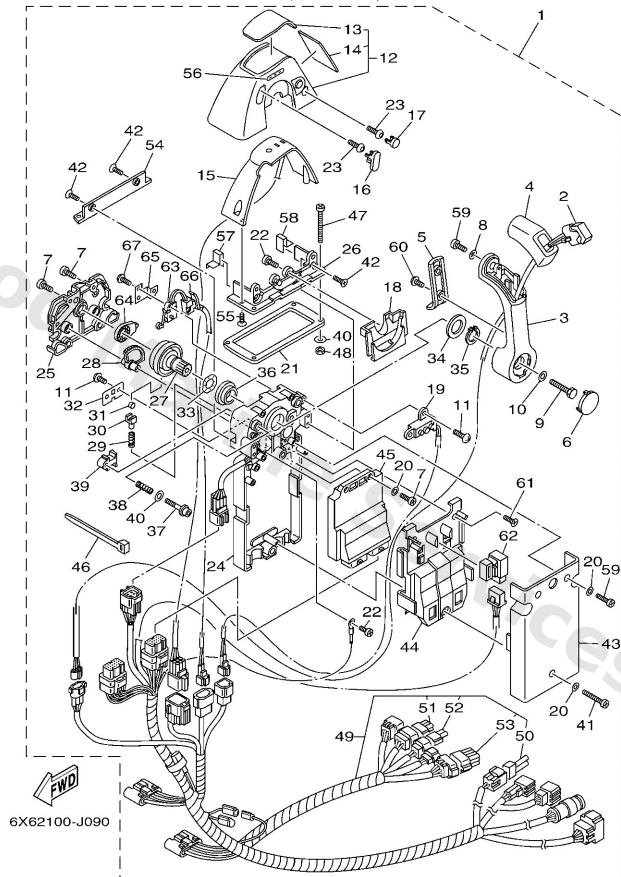
# Dbw Remote Control 1 (Single)



Ref	Part	
44	<a href="#">6X64822800</a> Holder, switch	<a href="#">Buy now</a>
45	<a href="#">6X68559020</a> Control unit assembly	<a href="#">Buy now</a>
46	<a href="#">7038259100</a> Band	<a href="#">Buy now</a>
47	<a href="#">9778050145</a> Screw, pan head tapping UR	<a href="#">Buy now</a>
47	<a href="#">9858005060</a> Screw, panhead UR	<a href="#">Buy now</a>
48	<a href="#">9538005600</a> Nut, hexagon (663)	<a href="#">Buy now</a>
49	<a href="#">6X682590A0</a> Wire harness assembly FOR 6X6-48205-40	<a href="#">Buy now</a>
49	<a href="#">6X682590D0</a> Wire Harness assembly FOR 6X6-48205-50	<a href="#">Buy now</a>
49	<a href="#">6X682590G0</a> Wire Harness assembly FOR 6X6-48205-30	<a href="#">Buy now</a>
50	<a href="#">6X68258520</a> Cap 2 (2p)	<a href="#">Buy now</a>
51	<a href="#">6X68258260</a> Cap 1 (6p) FOR 6X6-82590-A0	<a href="#">Buy now</a>
52	<a href="#">6X68258240</a> Cap 1 (4p) FOR 6X6-82590-A0	<a href="#">Buy now</a>
53	<a href="#">6X682582B0</a> Cap 1 (12P) FOR 6X6-82590-A0	<a href="#">Buy now</a>
54	<a href="#">6X64814400</a> Plate, stopper 2	<a href="#">Buy now</a>
55	<a href="#">6X64812900</a> Screw 3	<a href="#">Buy now</a>

## Dbw Remote Control 1 (Single)

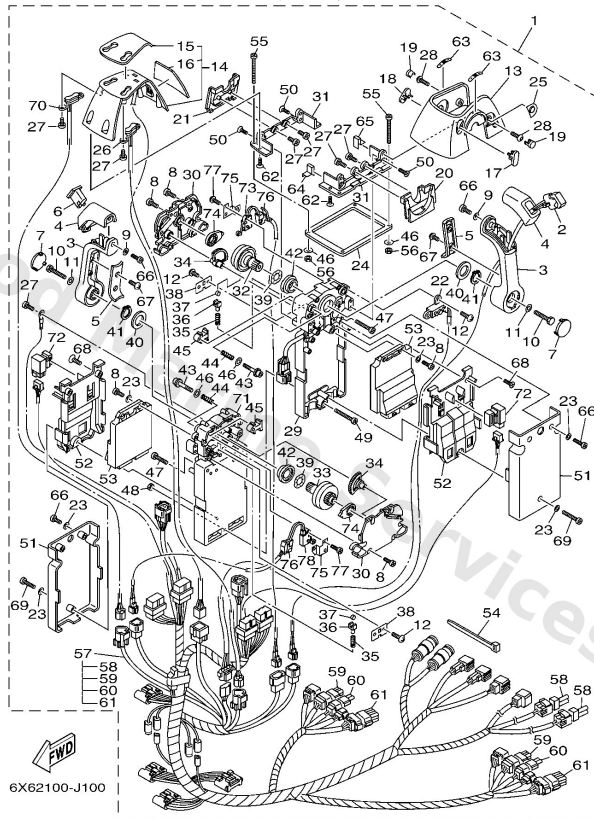
6X6 REMOTE CONTROL (SINGLE)



Ref	Part	
56	<a href="#">6X64419100</a> Indicator, shift	<a href="#">Buy now</a>
57	<a href="#">6X64817650</a> Grommet	<a href="#">Buy now</a>
58	<a href="#">6X64817660</a> Grommet	<a href="#">Buy now</a>
59	<a href="#">6X64812700</a> Screw 1	<a href="#">Buy now</a>
60	<a href="#">6X64812800</a> Screw 2	<a href="#">Buy now</a>
61	<a href="#">6X68114600</a> Screw 2	<a href="#">Buy now</a>
62	<a href="#">7048195010</a> Relay assembly	<a href="#">Buy now</a>
63	<a href="#">6X68254000</a> Neutral switch assembly	<a href="#">Buy now</a>
64	<a href="#">6X64824100</a> Arm, drive	<a href="#">Buy now</a>
65	<a href="#">6X64824501</a> Plate, lock	<a href="#">Buy now</a>
66	<a href="#">6X68254500</a> Grommet	<a href="#">Buy now</a>
67	<a href="#">6X68252V00</a> Screw, special	<a href="#">Buy now</a>

## Dbw Remote Control 2 (Twin)

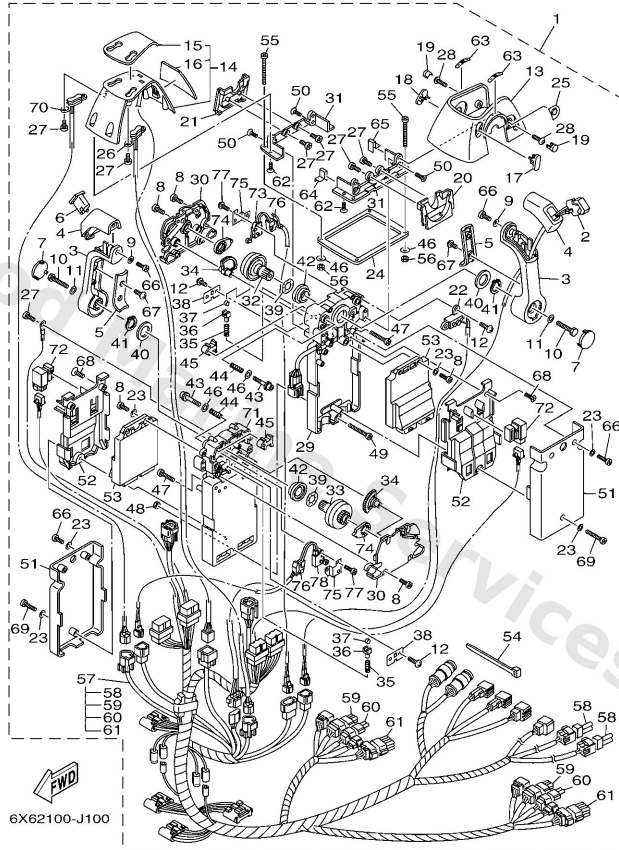
6X6 REMOTE CONTROL (TWIN)



Ref	Part	
1	<a href="#">6X64820730</a> 6X6 Rc Twn Top Mount Sgl Stn NOT FOR SALE	<a href="#">Buy now</a>
1	<a href="#">6X64820740</a> Remote Control assembly (Twin) NOT FOR SALE	<a href="#">Buy now</a>
1	<a href="#">6X64820750</a> Remote Control assembly (Twin) NOT FOR SALE	<a href="#">Buy now</a>
2	<a href="#">6X68256300</a> Trim & tilt switch assembly	<a href="#">Buy now</a>
3	<a href="#">6X64822100</a> Lever, control	<a href="#">Buy now</a>
4	<a href="#">6X64822200</a> Grip, control lever	<a href="#">Buy now</a>
5	<a href="#">6X64822400</a> Cover, control lever	<a href="#">Buy now</a>
6	<a href="#">6X64822210</a> Grip, control lever	<a href="#">Buy now</a>
7	<a href="#">6X64822410</a> Cover, control lever	<a href="#">Buy now</a>
8	<a href="#">9858005014</a> Screw, pan head(3yl)	<a href="#">Buy now</a>
9	<a href="#">9299005300</a> Washer, tooth	<a href="#">Buy now</a>
10	<a href="#">6X64817100</a> Bolt	<a href="#">Buy now</a>
11	<a href="#">9299008600</a> Washer, plain (663)	<a href="#">Buy now</a>
12	<a href="#">EL84812700</a> Screw 1	<a href="#">Buy now</a>
13	<a href="#">6X64811910</a> Cover	<a href="#">Buy now</a>

## Dbw Remote Control 2 (Twin)

6X6 REMOTE CONTROL (TWIN)

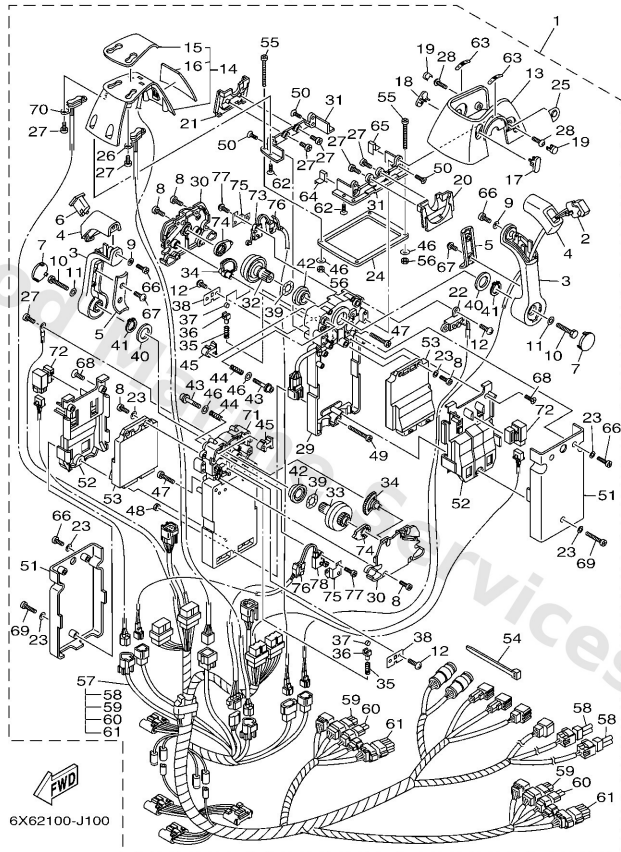


Ref	Part	
14	<a href="#">6X68430113</a> Pilot light assembly 1	<a href="#">Buy now</a>
15	<a href="#">6X64821540</a> Graphic	<a href="#">Buy now</a>
16	<a href="#">6X64821610</a> Graphic	<a href="#">Buy now</a>
17	<a href="#">6X64816710</a> Plug	<a href="#">Buy now</a>
18	<a href="#">6X64816720</a> Plug	<a href="#">Buy now</a>
19	<a href="#">6X64816760</a> Plug	<a href="#">Buy now</a>
20	<a href="#">6X64821910</a> Cover, lead	<a href="#">Buy now</a>
21	<a href="#">6X64821920</a> Cover, lead	<a href="#">Buy now</a>
22	<a href="#">6X68259E00</a> Switch assembly	<a href="#">Buy now</a>
23	<a href="#">9299005200</a> Ybs66-5 washer, plain	<a href="#">Buy now</a>
24	<a href="#">6X64817610</a> Grommet	<a href="#">Buy now</a>
25	<a href="#">6X64822500</a> Cover	<a href="#">Buy now</a>
26	<a href="#">6X68256340</a> Trim & tilt switch assembly	<a href="#">Buy now</a>
27	<a href="#">9858004010</a> Screw, pan head (e56)	<a href="#">Buy now</a>
28	<a href="#">92D8005016</a> Bolt, socket head	<a href="#">Buy now</a>



## Dbw Remote Control 2 (Twin)

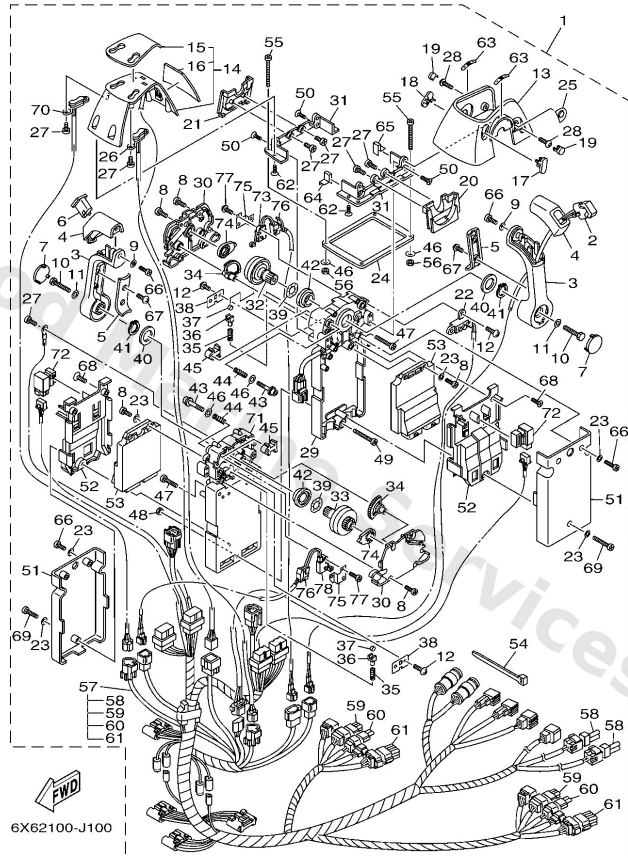
6X6 REMOTE CONTROL (TWIN)



Ref	Part	
29	<a href="#">6X6481A001</a> Remo-Con. Case assembly	<a href="#">Buy now</a>
30	<a href="#">6X64821200</a> Back plate 1	<a href="#">Buy now</a>
31	<a href="#">6X64814410</a> Plate, stopper 2	<a href="#">Buy now</a>
32	<a href="#">6X64824201</a> Shaft, drive	<a href="#">Buy now</a>
33	<a href="#">6X64824211</a> Shaft, drive	<a href="#">Buy now</a>
34	<a href="#">6X64823301</a> Gear 2	<a href="#">Buy now</a>
35	<a href="#">6X64823800</a> Spring, detent	<a href="#">Buy now</a>
36	<a href="#">6X64823700</a> Adaptor	<a href="#">Buy now</a>
37	<a href="#">6X64823600</a> Roller, detent	<a href="#">Buy now</a>
38	<a href="#">6X64818900</a> Retainer	<a href="#">Buy now</a>
39	<a href="#">7034819800</a> Washer, wave 3	<a href="#">Buy now</a>
40	<a href="#">6X64819300</a> Washer 3	<a href="#">Buy now</a>
41	<a href="#">6X64811800</a> Clip, shift lever	<a href="#">Buy now</a>
42	<a href="#">6X64823400</a> Bushing 1	<a href="#">Buy now</a>
43	<a href="#">6X64826700</a> Bolt set	<a href="#">Buy now</a>

## Dbw Remote Control 2 (Twin)

6X6 REMOTE CONTROL (TWIN)

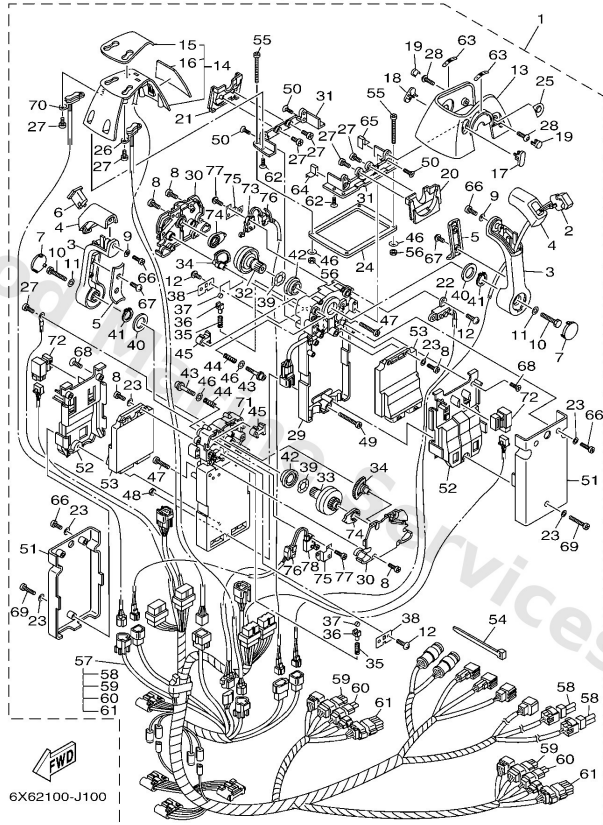


Ref	Part	
44	<a href="#">6X64815800</a> Spring 1	<a href="#">Buy now</a>
45	<a href="#">6X64826400</a> Friction, throttle	<a href="#">Buy now</a>
46	<a href="#">7044828700</a> Washer 1	<a href="#">Buy now</a>
47	<a href="#">9858005025</a> Screw, panhead (a93)	<a href="#">Buy now</a>
48	<a href="#">7044815600</a> Nut 1	<a href="#">Buy now</a>
49	<a href="#">7044828300</a> Screw, panhead (eg9)	<a href="#">Buy now</a>
50	<a href="#">9878005014</a> Screw 3	<a href="#">Buy now</a>
51	<a href="#">6X64821300</a> Back plate 2	<a href="#">Buy now</a>
52	<a href="#">6X64822800</a> Holder, switch	<a href="#">Buy now</a>
53	<a href="#">6X68559020</a> Control unit assembly	<a href="#">Buy now</a>
54	<a href="#">7038259100</a> Band	<a href="#">Buy now</a>
55	<a href="#">9778050145</a> Screw, pan head tapping UR	<a href="#">Buy now</a>
55	<a href="#">9858005060</a> Screw, panhead UR	<a href="#">Buy now</a>
56	<a href="#">9538005600</a> Nut, hexagon (663)	<a href="#">Buy now</a>
57	<a href="#">6X682590B0</a> Wire harness assembly FOR 6X6-48207-40	<a href="#">Buy now</a>



# Dbw Remote Control 2 (Twin)

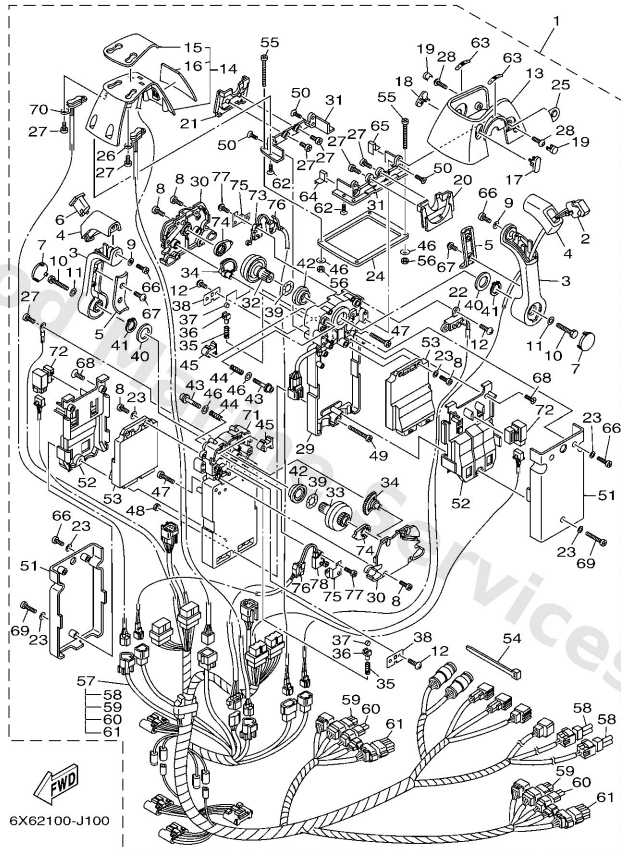
6X6 REMOTE CONTROL (TWIN)



Ref	Part	
57	<a href="#">6X682590E0</a> Wire Harness assembly FOR 6X6-48207-50	<a href="#">Buy now</a>
57	<a href="#">6X682590H0</a> Wire Harness assembly FOR 6X6-48207-30	<a href="#">Buy now</a>
58	<a href="#">6X68258520</a> Cap 2 (2p)	<a href="#">Buy now</a>
59	<a href="#">6X68258260</a> Cap 1 (6p) FOR 6X6-82590-B0	<a href="#">Buy now</a>
60	<a href="#">6X68258240</a> Cap 1 (4p) FOR 6X6-82590-B0	<a href="#">Buy now</a>
61	<a href="#">6X682582B0</a> Cap 1 (12P) FOR 6X6-82590-B0	<a href="#">Buy now</a>
62	<a href="#">6X64812900</a> Screw 3	<a href="#">Buy now</a>
63	<a href="#">6X64419100</a> Indicator, shift	<a href="#">Buy now</a>
64	<a href="#">6X64817650</a> Grommet	<a href="#">Buy now</a>
65	<a href="#">6X64817660</a> Grommet	<a href="#">Buy now</a>
66	<a href="#">6X64812700</a> Screw 1	<a href="#">Buy now</a>
67	<a href="#">6X64812800</a> Screw 2	<a href="#">Buy now</a>
68	<a href="#">6X68114600</a> Screw 2	<a href="#">Buy now</a>
69	<a href="#">6X68114500</a> Screw 1	<a href="#">Buy now</a>
70	<a href="#">6X68256350</a> Trim & tilt switch assembly	<a href="#">Buy now</a>

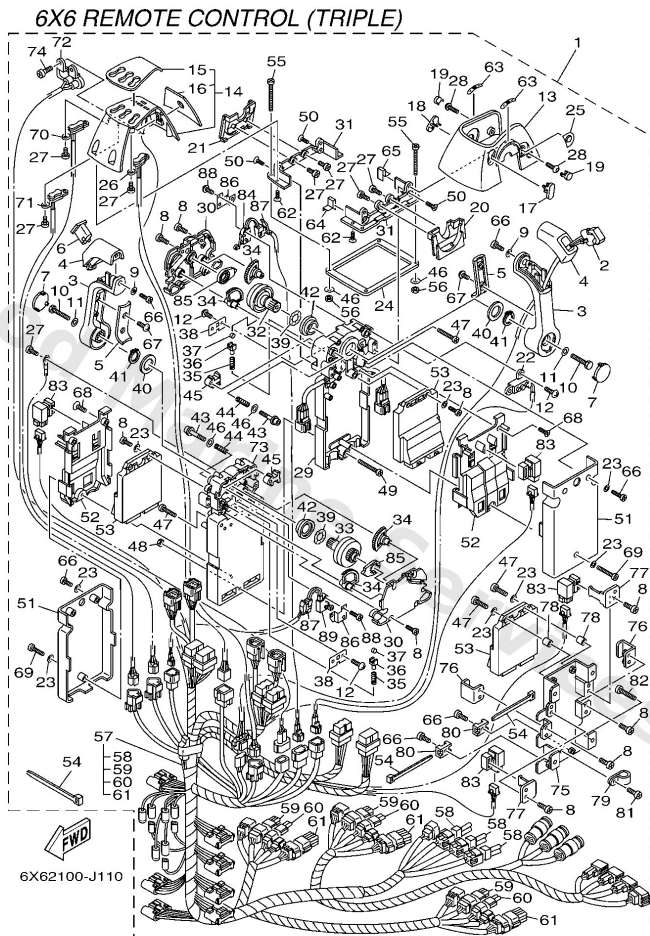
## Dbw Remote Control 2 (Twin)

6X6 REMOTE CONTROL (TWIN)



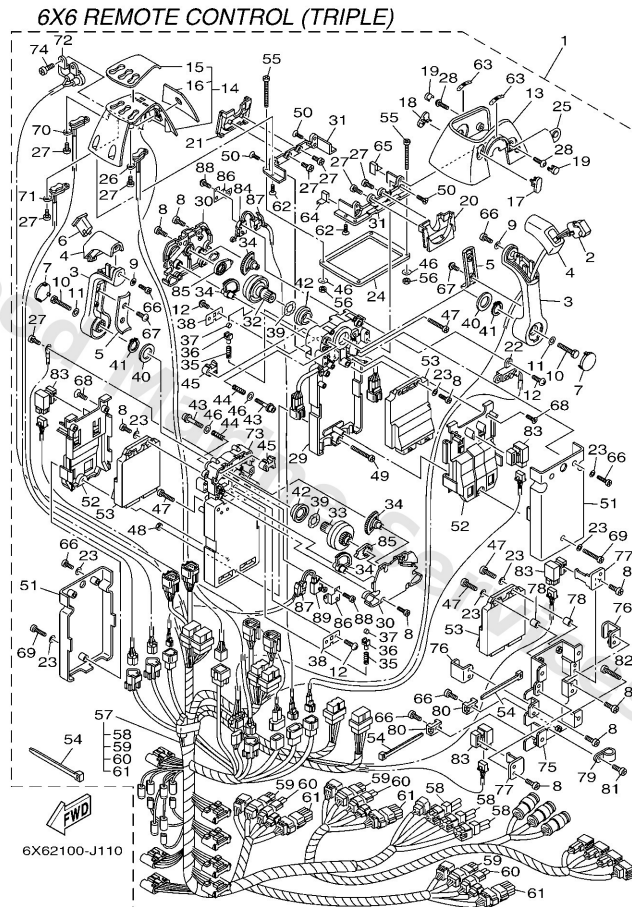
Ref	Part	
71	<a href="#">6X6481A021</a> Remo-Con. Case assembly	<a href="#">Buy now</a>
72	<a href="#">7048195010</a> Relay assembly	<a href="#">Buy now</a>
73	<a href="#">6X68254000</a> Neutral switch assembly	<a href="#">Buy now</a>
74	<a href="#">6X64824100</a> Arm, drive	<a href="#">Buy now</a>
75	<a href="#">6X64824501</a> Plate, lock	<a href="#">Buy now</a>
76	<a href="#">6X68254500</a> Grommet	<a href="#">Buy now</a>
77	<a href="#">6X68252V00</a> Screw, special	<a href="#">Buy now</a>
78	<a href="#">6X68254010</a> Neutral switch assembly	<a href="#">Buy now</a>

## Dbw Remote Control 3 (Triple)



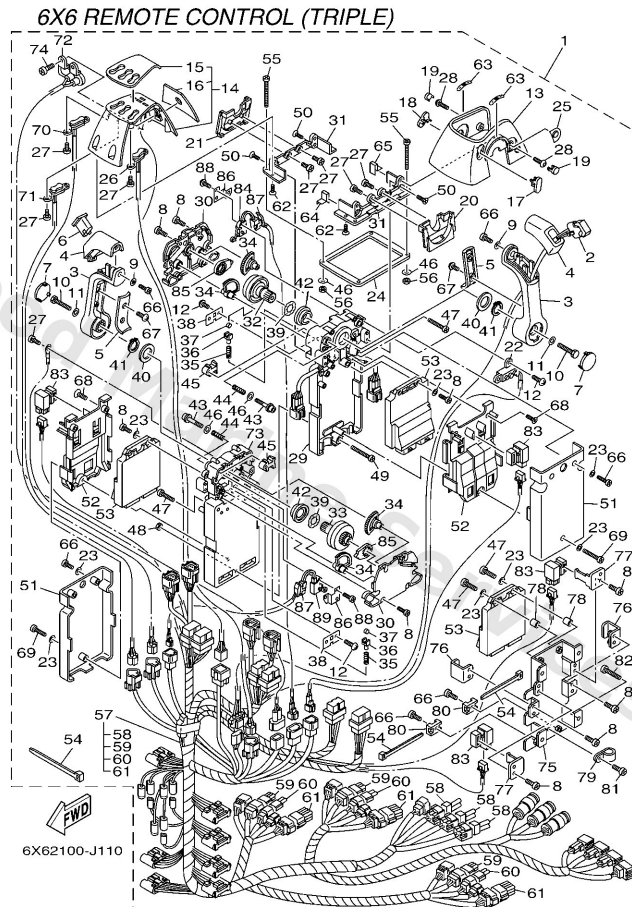
Ref	Part	
1	<a href="#">6X64820840</a> 6x6 rc trple top mount sgl stn NOT FOR SALE	<a href="#">Buy now</a>
1	<a href="#">6X64820850</a> Remote Control assembly (Triple) NOT FOR SALE	<a href="#">Buy now</a>
2	<a href="#">6X68256300</a> Trim & tilt switch assembly	<a href="#">Buy now</a>
3	<a href="#">6X64822100</a> Lever, control	<a href="#">Buy now</a>
4	<a href="#">6X64822200</a> Grip, control lever	<a href="#">Buy now</a>
5	<a href="#">6X64822400</a> Cover, control lever	<a href="#">Buy now</a>
6	<a href="#">6X64822210</a> Grip, control lever	<a href="#">Buy now</a>
7	<a href="#">6X64822410</a> Cover, control lever	<a href="#">Buy now</a>
8	<a href="#">9858005014</a> Screw, pan head(3yl)	<a href="#">Buy now</a>
9	<a href="#">9299005300</a> Washer, tooth	<a href="#">Buy now</a>
10	<a href="#">6X64817100</a> Bolt	<a href="#">Buy now</a>
11	<a href="#">9299008600</a> Washer, plain (663)	<a href="#">Buy now</a>
12	<a href="#">EL84812700</a> Screw 1	<a href="#">Buy now</a>
13	<a href="#">6X64811910</a> Cover	<a href="#">Buy now</a>
14	<a href="#">6X68430123</a> Pilot light assembly 1	<a href="#">Buy now</a>

## Dbw Remote Control 3 (Triple)



Ref	Part	
15	<a href="#">6X64821550</a> Graphic	<a href="#">Buy now</a>
16	<a href="#">6X64821620</a> Graphic	<a href="#">Buy now</a>
17	<a href="#">6X64816710</a> Plug	<a href="#">Buy now</a>
18	<a href="#">6X64816720</a> Plug	<a href="#">Buy now</a>
19	<a href="#">6X64816760</a> Plug	<a href="#">Buy now</a>
20	<a href="#">6X64821910</a> Cover, lead	<a href="#">Buy now</a>
21	<a href="#">6X64821920</a> Cover, lead	<a href="#">Buy now</a>
22	<a href="#">6X68259E00</a> Switch assembly	<a href="#">Buy now</a>
23	<a href="#">9299005200</a> Ybs66-5 washer, plain	<a href="#">Buy now</a>
24	<a href="#">6X64817610</a> Grommet	<a href="#">Buy now</a>
25	<a href="#">6X64822500</a> Cover	<a href="#">Buy now</a>
26	<a href="#">6X68256340</a> Trim & tilt switch assembly	<a href="#">Buy now</a>
27	<a href="#">9858004010</a> Screw, pan head (e56)	<a href="#">Buy now</a>
28	<a href="#">92D8005016</a> Bolt, socket head	<a href="#">Buy now</a>
29	<a href="#">6X6481A011</a> Remo-Con. Case assembly	<a href="#">Buy now</a>

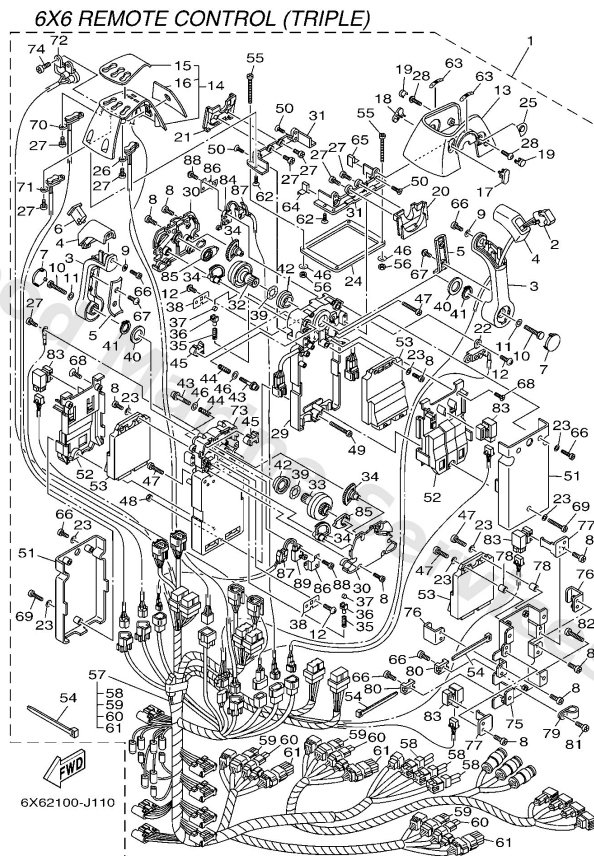
## Dbw Remote Control 3 (Triple)



Ref	Part	
30	<a href="#">6X64821200</a> Back plate 1	<a href="#">Buy now</a>
31	<a href="#">6X64814410</a> Plate, stopper 2	<a href="#">Buy now</a>
32	<a href="#">6X64824201</a> Shaft, drive	<a href="#">Buy now</a>
33	<a href="#">6X64824211</a> Shaft, drive	<a href="#">Buy now</a>
34	<a href="#">6X64823301</a> Gear 2	<a href="#">Buy now</a>
35	<a href="#">6X64823800</a> Spring, detent	<a href="#">Buy now</a>
36	<a href="#">6X64823700</a> Adaptor	<a href="#">Buy now</a>
37	<a href="#">6X64823600</a> Roller, detent	<a href="#">Buy now</a>
38	<a href="#">6X64818900</a> Retainer	<a href="#">Buy now</a>
39	<a href="#">7034819800</a> Washer, wave 3	<a href="#">Buy now</a>
40	<a href="#">6X64819300</a> Washer 3	<a href="#">Buy now</a>
41	<a href="#">6X64811800</a> Clip, shift lever	<a href="#">Buy now</a>
42	<a href="#">6X64823400</a> Bushing 1	<a href="#">Buy now</a>
43	<a href="#">6X64826700</a> Bolt set	<a href="#">Buy now</a>
44	<a href="#">6X64815800</a> Spring 1	<a href="#">Buy now</a>

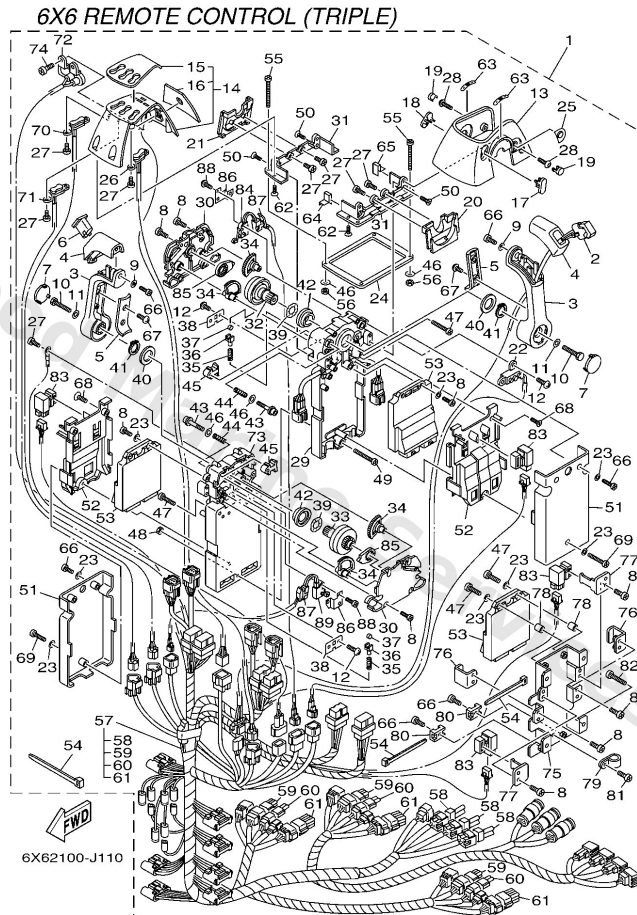


## Dbw Remote Control 3 (Triple)



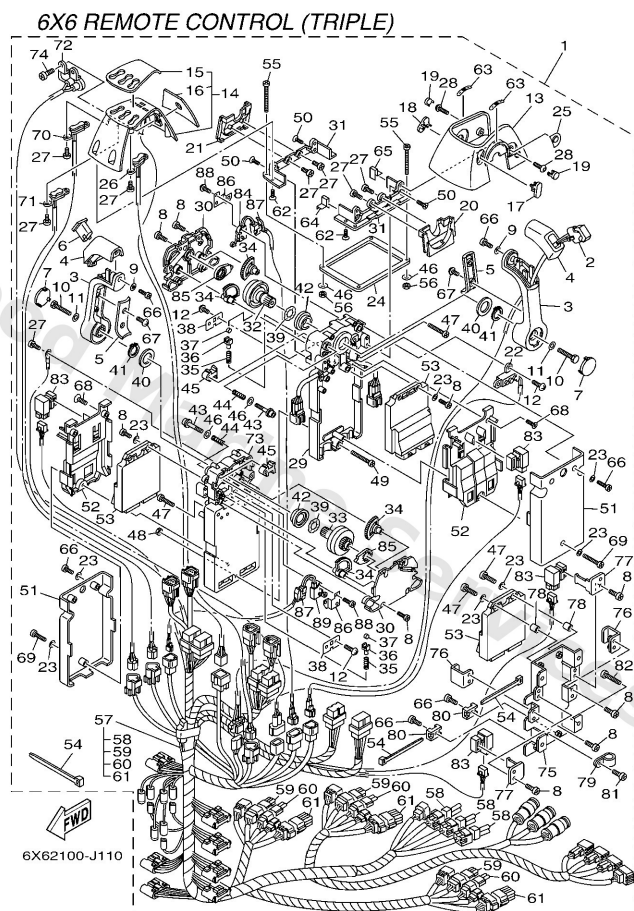
Ref	Part	
45	<a href="#">6X64826400</a> Friction, throttle	<a href="#">Buy now</a>
46	<a href="#">7044828700</a> Washer 1	<a href="#">Buy now</a>
47	<a href="#">9858005025</a> Screw, panhead (a93)	<a href="#">Buy now</a>
48	<a href="#">7044815600</a> Nut 1	<a href="#">Buy now</a>
49	<a href="#">7044828300</a> Screw, panhead (eg9)	<a href="#">Buy now</a>
50	<a href="#">9878005014</a> Screw 3	<a href="#">Buy now</a>
51	<a href="#">6X64821300</a> Back plate 2	<a href="#">Buy now</a>
52	<a href="#">6X64822800</a> Holder, switch	<a href="#">Buy now</a>
53	<a href="#">6X68559020</a> Control unit assembly	<a href="#">Buy now</a>
54	<a href="#">7038259100</a> Band	<a href="#">Buy now</a>
55	<a href="#">9778050145</a> Screw, pan head tapping UR	<a href="#">Buy now</a>
55	<a href="#">9858005060</a> Screw, panhead UR	<a href="#">Buy now</a>
56	<a href="#">9538005600</a> Nut, hexagon (663)	<a href="#">Buy now</a>
57	<a href="#">6X682590C0</a> Wire Harness assembly FOR 6X6-48208-40	<a href="#">Buy now</a>
57	<a href="#">6X682590F0</a> Wire Harness assembly FOR 6X6-48208-50	<a href="#">Buy now</a>

## Dbw Remote Control 3 (Triple)



Ref	Part	
58	<a href="#">6X68258520</a> Cap 2 (2p)	<a href="#">Buy now</a>
59	<a href="#">6X68258260</a> Cap 1 (6p) FOR 6X6-82590-C0	<a href="#">Buy now</a>
60	<a href="#">6X68258240</a> Cap 1 (4p) FOR 6X6-82590-C0	<a href="#">Buy now</a>
61	<a href="#">6X682582B0</a> Cap 1 (12P) FOR 6X6-82590-C0	<a href="#">Buy now</a>
62	<a href="#">6X64812900</a> Screw 3	<a href="#">Buy now</a>
63	<a href="#">6X64419100</a> Indicator, shift	<a href="#">Buy now</a>
64	<a href="#">6X64817650</a> Grommet	<a href="#">Buy now</a>
65	<a href="#">6X64817660</a> Grommet	<a href="#">Buy now</a>
66	<a href="#">6X64812700</a> Screw 1	<a href="#">Buy now</a>
67	<a href="#">6X64812800</a> Screw 2	<a href="#">Buy now</a>
68	<a href="#">6X68114600</a> Screw 2	<a href="#">Buy now</a>
69	<a href="#">6X68114500</a> Screw 1	<a href="#">Buy now</a>
70	<a href="#">6X68256350</a> Trim & tilt switch assembly	<a href="#">Buy now</a>
71	<a href="#">6X68256360</a> Trim & tilt switch assembly	<a href="#">Buy now</a>
72	<a href="#">6X68259F10</a> Switch assembly	<a href="#">Buy now</a>

## Dbw Remote Control 3 (Triple)

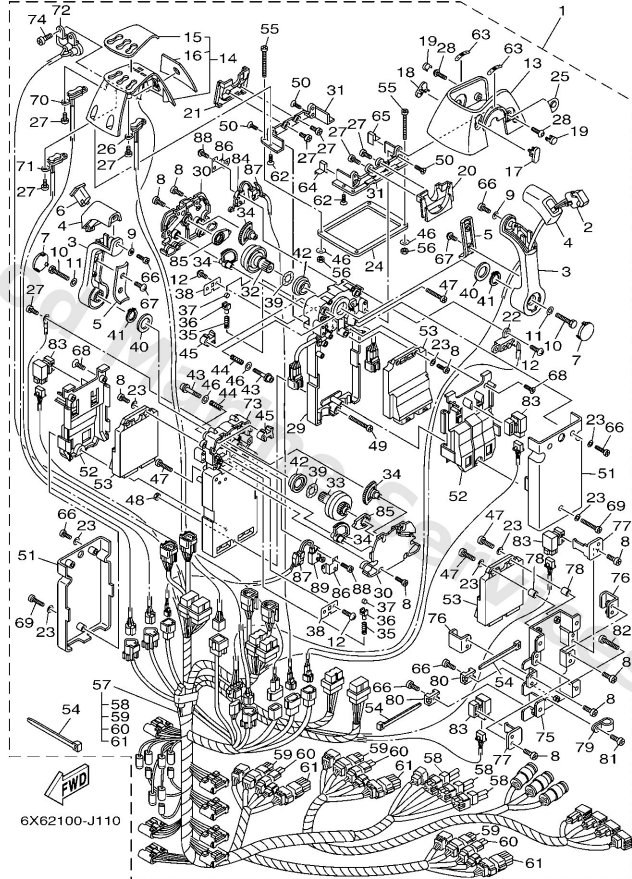


Ref	Part	
73	<a href="#">6X6481A031</a> Remo-Con. Case assembly	<a href="#">Buy now</a>
74	<a href="#">9878005010</a> Screw, flat head (716)	<a href="#">Buy now</a>
75	<a href="#">6X64821110</a> Housing,1	<a href="#">Buy now</a>
76	<a href="#">6X68555700</a> Holder	<a href="#">Buy now</a>
77	<a href="#">6X68259100</a> Band	<a href="#">Buy now</a>
78	<a href="#">6X68252500</a> Spacer, 1	<a href="#">Buy now</a>
79	<a href="#">6X68258400</a> Clamp	<a href="#">Buy now</a>
80	<a href="#">6X68258100</a> Stay, cord clamp	<a href="#">Buy now</a>
81	<a href="#">6X74812700</a> Screw 1	<a href="#">Buy now</a>
82	<a href="#">6X04812800</a> Screw 2	<a href="#">Buy now</a>
83	<a href="#">7048195010</a> Relay assembly	<a href="#">Buy now</a>
84	<a href="#">6X68254000</a> Neutral switch assembly	<a href="#">Buy now</a>
85	<a href="#">6X64824100</a> Arm, drive	<a href="#">Buy now</a>
86	<a href="#">6X64824501</a> Plate, lock	<a href="#">Buy now</a>
87	<a href="#">6X68254500</a> Grommet	<a href="#">Buy now</a>



# Dbw Remote Control 3 (Triple)

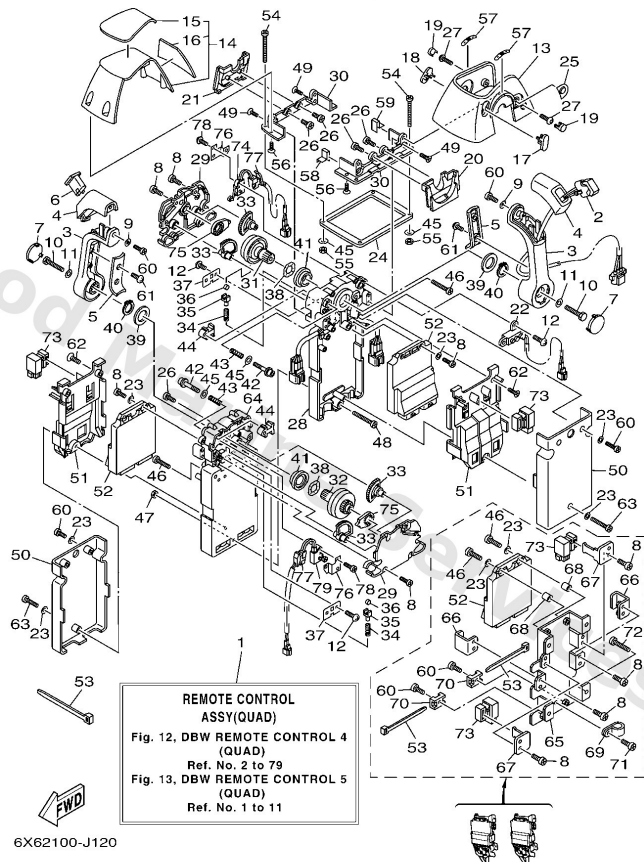
6X6 REMOTE CONTROL (TRIPLE)



Ref	Part	
88	<a href="#">6X68252V00</a> Screw, special	<a href="#">Buy now</a>
89	<a href="#">6X68254010</a> Neutral switch assembly	<a href="#">Buy now</a>

# Dbw Remote Control 4 (Quad)

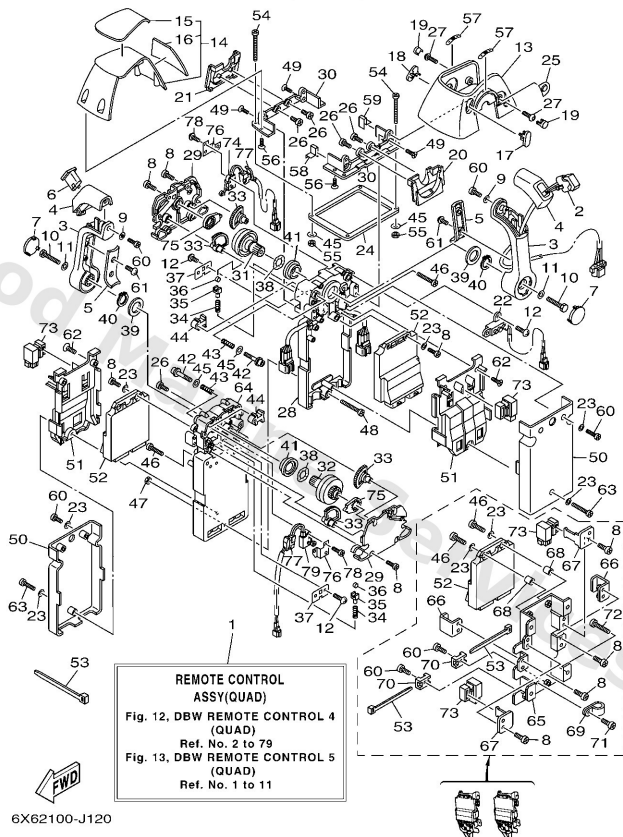
6X6 REMOTE CONTROL (QUAD)



Ref	Part	
1	<a href="#">6X64820900</a> Remote Control assembly (Quad) NOT FOR SALE	<a href="#">Buy now</a>
1	<a href="#">6X64820910</a> Remote Control assembly (Quad) NOT FOR SALE	<a href="#">Buy now</a>
2	<a href="#">6X68256300</a> Trim & tilt switch assembly	<a href="#">Buy now</a>
3	<a href="#">6X64822100</a> Lever, control	<a href="#">Buy now</a>
4	<a href="#">6X64822200</a> Grip, control lever	<a href="#">Buy now</a>
5	<a href="#">6X64822400</a> Cover, control lever	<a href="#">Buy now</a>
6	<a href="#">6X64822210</a> Grip, control lever	<a href="#">Buy now</a>
7	<a href="#">6X64822410</a> Cover, control lever	<a href="#">Buy now</a>
8	<a href="#">9858005014</a> Screw, pan head(3yl)	<a href="#">Buy now</a>
9	<a href="#">9299005300</a> Washer, tooth	<a href="#">Buy now</a>
10	<a href="#">6X64817100</a> Bolt	<a href="#">Buy now</a>
11	<a href="#">9299008600</a> Washer, plain (663)	<a href="#">Buy now</a>
12	<a href="#">EL84812700</a> Screw 1	<a href="#">Buy now</a>
13	<a href="#">6X64811910</a> Cover	<a href="#">Buy now</a>
14	<a href="#">6X68430130</a> Pilot light assembly 1	<a href="#">Buy now</a>

# Dbw Remote Control 4 (Quad)

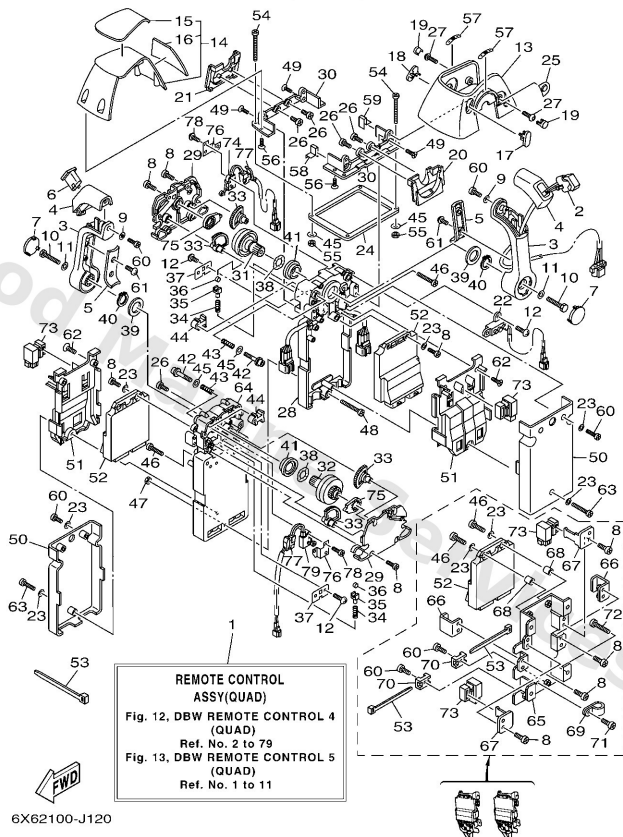
6X6 REMOTE CONTROL (QUAD)



Ref	Part	
15	<a href="#">6X64821570</a> Graphic	<a href="#">Buy now</a>
16	<a href="#">6X64821610</a> Graphic	<a href="#">Buy now</a>
17	<a href="#">6X64816710</a> Plug	<a href="#">Buy now</a>
18	<a href="#">6X64816720</a> Plug	<a href="#">Buy now</a>
19	<a href="#">6X64816760</a> Plug	<a href="#">Buy now</a>
20	<a href="#">6X64821910</a> Cover, lead	<a href="#">Buy now</a>
21	<a href="#">6X64821920</a> Cover, lead	<a href="#">Buy now</a>
22	<a href="#">6X68259E00</a> Switch assembly	<a href="#">Buy now</a>
23	<a href="#">9299005200</a> Ybs66-5 washer, plain	<a href="#">Buy now</a>
24	<a href="#">6X64817610</a> Grommet	<a href="#">Buy now</a>
25	<a href="#">6X64822500</a> Cover	<a href="#">Buy now</a>
26	<a href="#">9858004010</a> Screw, pan head (e56)	<a href="#">Buy now</a>
27	<a href="#">92D8005016</a> Bolt, socket head	<a href="#">Buy now</a>
28	<a href="#">6X6481A011</a> Remo-Con. Case assembly	<a href="#">Buy now</a>
29	<a href="#">6X64821200</a> Back plate 1	<a href="#">Buy now</a>

# Dbw Remote Control 4 (Quad)

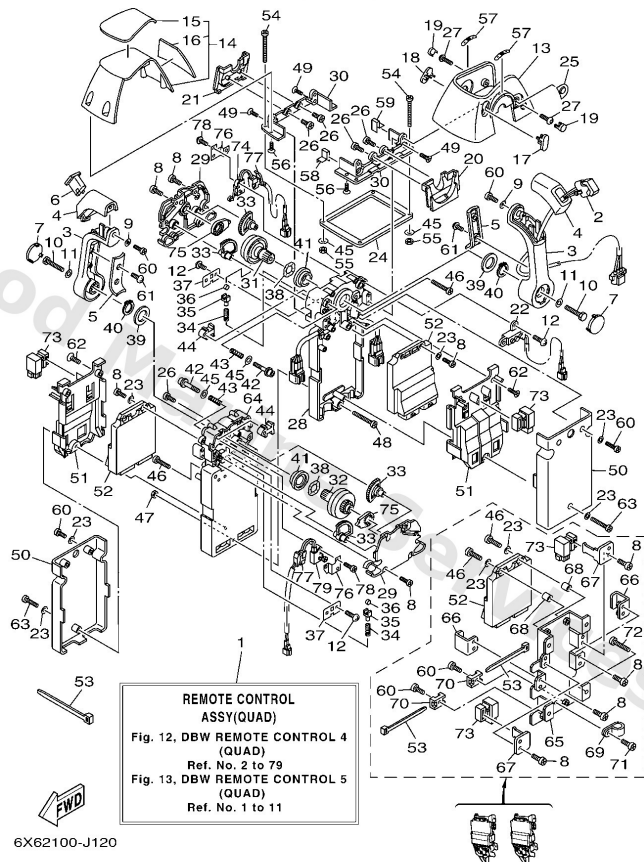
6X6 REMOTE CONTROL (QUAD)



Ref	Part	
30	<a href="#">6X64814410</a> Plate, stopper 2	<a href="#">Buy now</a>
31	<a href="#">6X64824201</a> Shaft, drive	<a href="#">Buy now</a>
32	<a href="#">6X64824211</a> Shaft, drive	<a href="#">Buy now</a>
33	<a href="#">6X64823301</a> Gear 2	<a href="#">Buy now</a>
34	<a href="#">6X64823800</a> Spring, detent	<a href="#">Buy now</a>
35	<a href="#">6X64823700</a> Adaptor	<a href="#">Buy now</a>
36	<a href="#">6X64823600</a> Roller, detent	<a href="#">Buy now</a>
37	<a href="#">6X64818900</a> Retainer	<a href="#">Buy now</a>
38	<a href="#">7034819800</a> Washer, wave 3	<a href="#">Buy now</a>
39	<a href="#">6X64819300</a> Washer 3	<a href="#">Buy now</a>
40	<a href="#">6X64811800</a> Clip, shift lever	<a href="#">Buy now</a>
41	<a href="#">6X64823400</a> Bushing 1	<a href="#">Buy now</a>
42	<a href="#">6X64826700</a> Bolt set	<a href="#">Buy now</a>
43	<a href="#">6X64815800</a> Spring 1	<a href="#">Buy now</a>
44	<a href="#">6X64826400</a> Friction, throttle	<a href="#">Buy now</a>

# Dbw Remote Control 4 (Quad)

6X6 REMOTE CONTROL (QUAD)

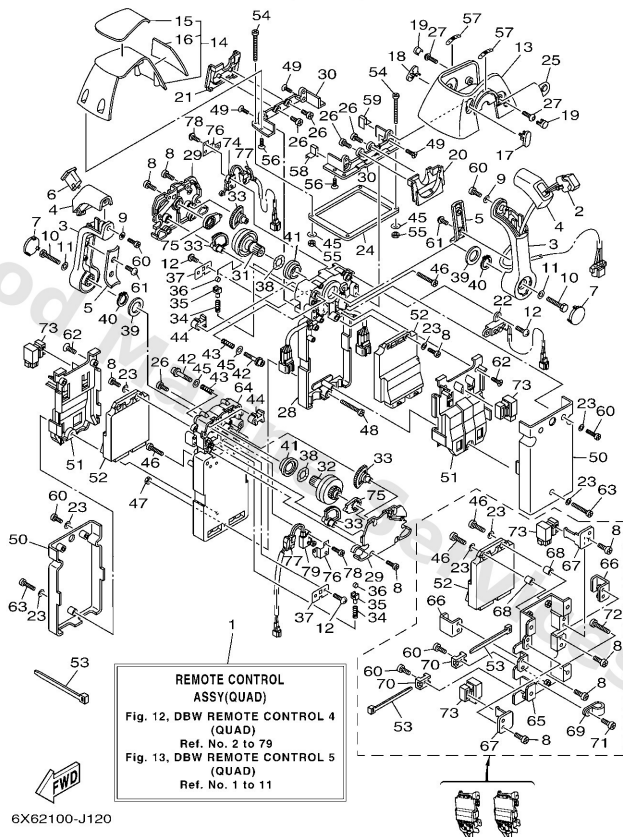


Ref	Part	
45	<a href="#">7044828700</a> Washer 1	<a href="#">Buy now</a>
46	<a href="#">9858005025</a> Screw, panhead (a93)	<a href="#">Buy now</a>
47	<a href="#">7044815600</a> Nut 1	<a href="#">Buy now</a>
48	<a href="#">7044828300</a> Screw,panhead (eg9)	<a href="#">Buy now</a>
49	<a href="#">9878005014</a> Screw 3	<a href="#">Buy now</a>
50	<a href="#">6X64821300</a> Back plate 2	<a href="#">Buy now</a>
51	<a href="#">6X64822800</a> Holder, switch	<a href="#">Buy now</a>
52	<a href="#">6X68559020</a> Control unit assembly	<a href="#">Buy now</a>
53	<a href="#">7038259100</a> Band	<a href="#">Buy now</a>
54	<a href="#">9778050145</a> Screw, pan head tapping UR	<a href="#">Buy now</a>
54	<a href="#">9858005060</a> Screw, panhead UR	<a href="#">Buy now</a>
55	<a href="#">9538005600</a> Nut, hexagon (663)	<a href="#">Buy now</a>
56	<a href="#">6X64812900</a> Screw 3	<a href="#">Buy now</a>
57	<a href="#">6X64419100</a> Indicator, shift	<a href="#">Buy now</a>
58	<a href="#">6X64817650</a> Grommet	<a href="#">Buy now</a>



# Dbw Remote Control 4 (Quad)

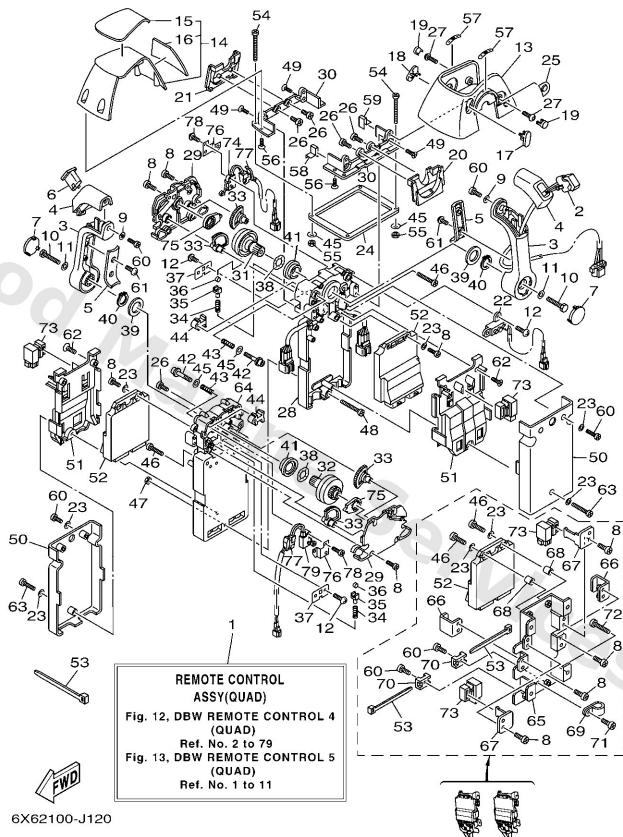
6X6 REMOTE CONTROL (QUAD)



Ref	Part	
59	<a href="#">6X64817660</a> Grommet	<a href="#">Buy now</a>
60	<a href="#">6X64812700</a> Screw 1	<a href="#">Buy now</a>
61	<a href="#">6X64812800</a> Screw 2	<a href="#">Buy now</a>
62	<a href="#">6X68114600</a> Screw 2	<a href="#">Buy now</a>
63	<a href="#">6X68114500</a> Screw 1	<a href="#">Buy now</a>
64	<a href="#">6X6481A031</a> Remo-Con. Case assembly	<a href="#">Buy now</a>
65	<a href="#">6X64821110</a> Housing,1	<a href="#">Buy now</a>
66	<a href="#">6X68555700</a> Holder	<a href="#">Buy now</a>
67	<a href="#">6X68259100</a> Band	<a href="#">Buy now</a>
68	<a href="#">6X68252S00</a> Spacer, 1	<a href="#">Buy now</a>
69	<a href="#">6X68258400</a> Clamp	<a href="#">Buy now</a>
70	<a href="#">6X68258100</a> Stay, cord clamp	<a href="#">Buy now</a>
71	<a href="#">6X74812700</a> Screw 1	<a href="#">Buy now</a>
72	<a href="#">6X04812800</a> Screw 2	<a href="#">Buy now</a>
73	<a href="#">7048195010</a> Relay assembly	<a href="#">Buy now</a>

# Dbw Remote Control 4 (Quad)

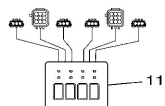
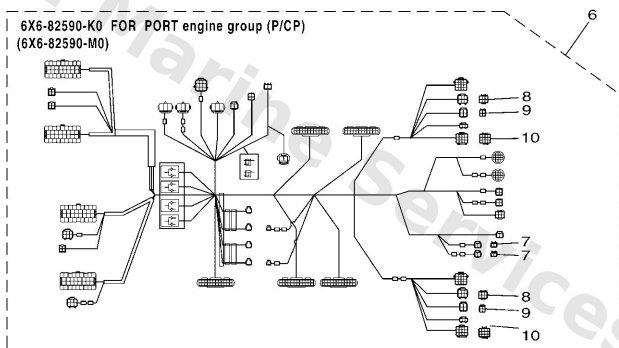
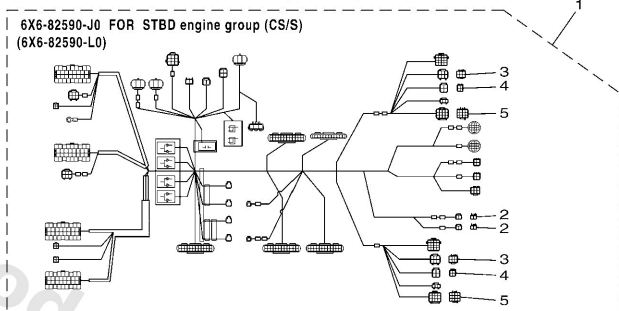
6X6 REMOTE CONTROL (QUAD)



Ref	Part	
74	<a href="#">6X68254000</a> Neutral switch assembly	<a href="#">Buy now</a>
75	<a href="#">6X64824100</a> Arm, drive	<a href="#">Buy now</a>
76	<a href="#">6X64824501</a> Plate, lock	<a href="#">Buy now</a>
77	<a href="#">6X68254500</a> Grommet	<a href="#">Buy now</a>
78	<a href="#">6X68252V00</a> Screw, special	<a href="#">Buy now</a>
79	<a href="#">6X68254010</a> Neutral switch assembly	<a href="#">Buy now</a>

# Dbw Remote Control 5 (Quad)

## 6X6 REMOTE CONTROL (QUAD)

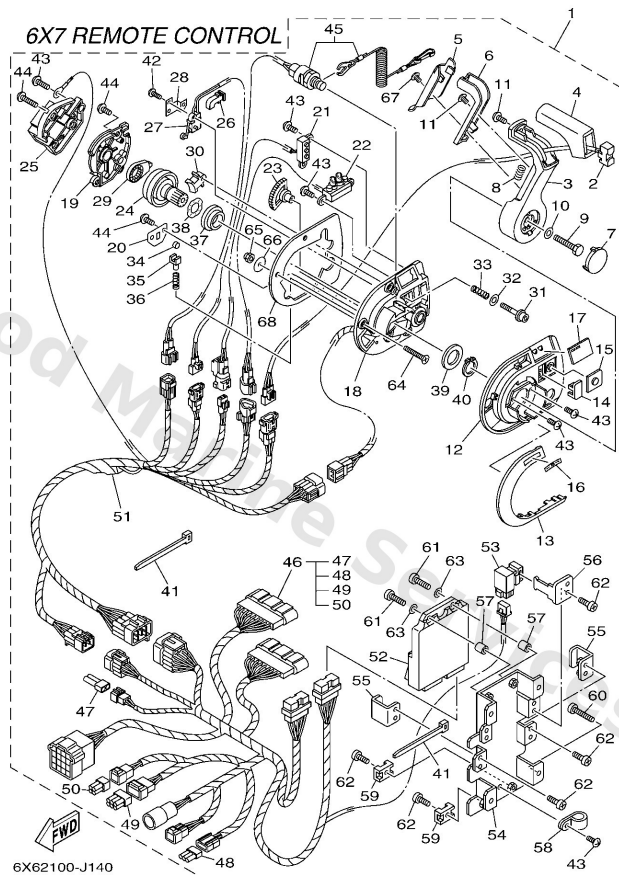


6X62100-J130

Ref	Part	
1	<a href="#">6X682590J0</a> Wire harness assembly FOR 6X6-48209-00	<a href="#">Buy now</a>
1	<a href="#">6X682590L0</a> Wire harness assembly FOR 6X6-48209-10	<a href="#">Buy now</a>
2	<a href="#">6X68258520</a> Cap 2 (2p)	<a href="#">Buy now</a>
3	<a href="#">6X68258260</a> Cap 1 (6p) FOR 6X6-82590-J0	<a href="#">Buy now</a>
4	<a href="#">6X68258240</a> Cap 1 (4p) FOR 6X6-82590-J0	<a href="#">Buy now</a>
5	<a href="#">6X682582B0</a> Cap 1 (12P) FOR 6X6-82590-J0	<a href="#">Buy now</a>
6	<a href="#">6X682590K0</a> Wire harness assembly FOR 6X6-48209-00	<a href="#">Buy now</a>
6	<a href="#">6X682590M0</a> Wire harness assembly FOR 6X6-48209-10	<a href="#">Buy now</a>
11	<a href="#">6X682570N0</a> Panel switch assembly	<a href="#">Buy now</a>

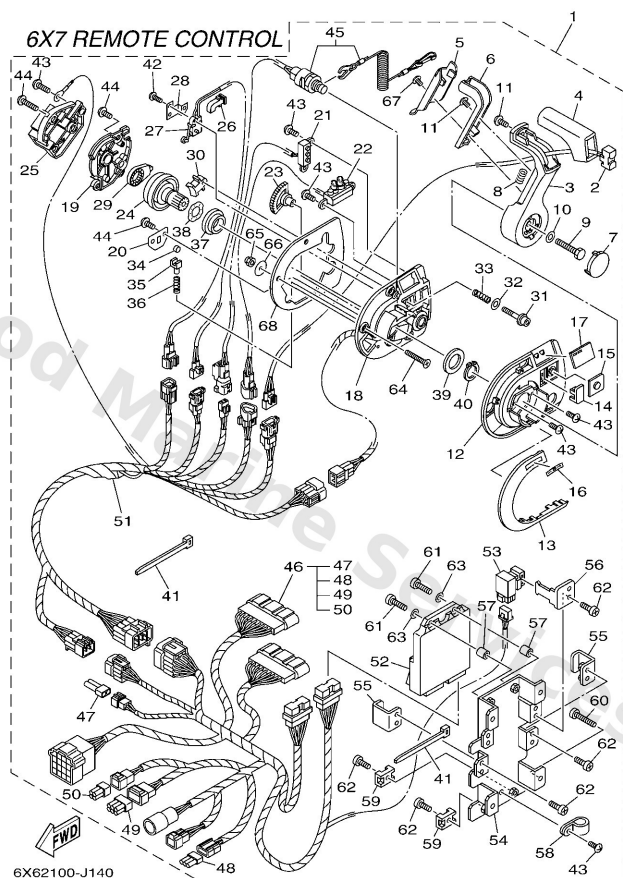


## Dbw Remote Control 6 (6X7)



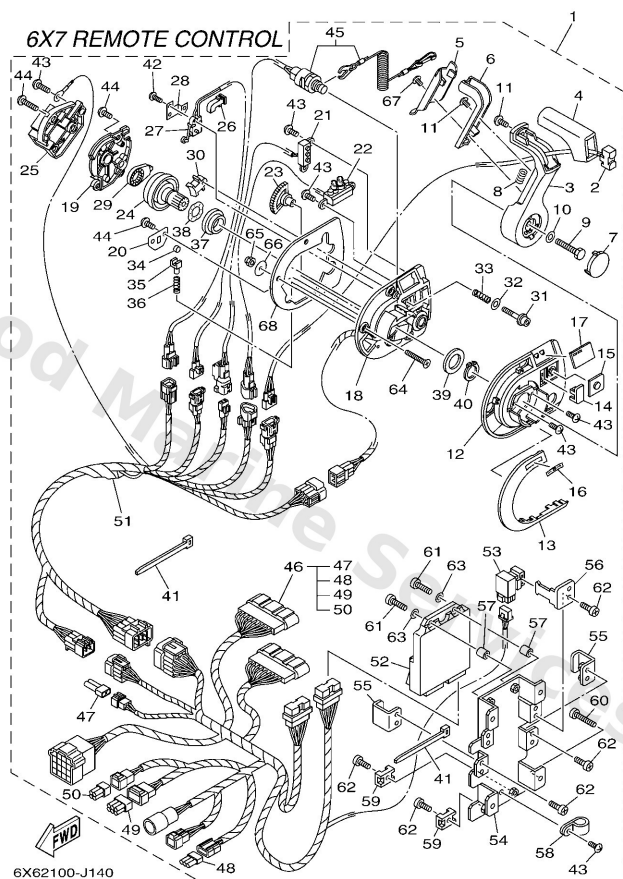
Ref	Part	
1	<a href="#">6X74820610</a> 6x7 dbw flush mount sgl stn <b>NOT FOR SALE</b>	<a href="#">Buy now</a>
2	<a href="#">6X78256300</a> Trim & tilt switch assembly	<a href="#">Buy now</a>
3	<a href="#">6X74822100</a> Lever, control	<a href="#">Buy now</a>
4	<a href="#">6X74822200</a> Grip, control lever	<a href="#">Buy now</a>
5	<a href="#">6X74822400</a> Cover, control lever	<a href="#">Buy now</a>
6	<a href="#">6X74822300</a> Lock, neutral	<a href="#">Buy now</a>
7	<a href="#">6X74822410</a> Cover, control lever	<a href="#">Buy now</a>
8	<a href="#">7034822700</a> Spring, neutral lock	<a href="#">Buy now</a>
9	<a href="#">6X64817100</a> Bolt	<a href="#">Buy now</a>
10	<a href="#">9299008600</a> Washer, plain (663)	<a href="#">Buy now</a>
11	<a href="#">6X64812800</a> Screw 2	<a href="#">Buy now</a>
12	<a href="#">6X74811900</a> Cover	<a href="#">Buy now</a>
13	<a href="#">6X74816710</a> Plug	<a href="#">Buy now</a>
14	<a href="#">6X74816700</a> Plug	<a href="#">Buy now</a>
15	<a href="#">6X74822500</a> Cover	<a href="#">Buy now</a>

## Dbw Remote Control 6 (6X7)



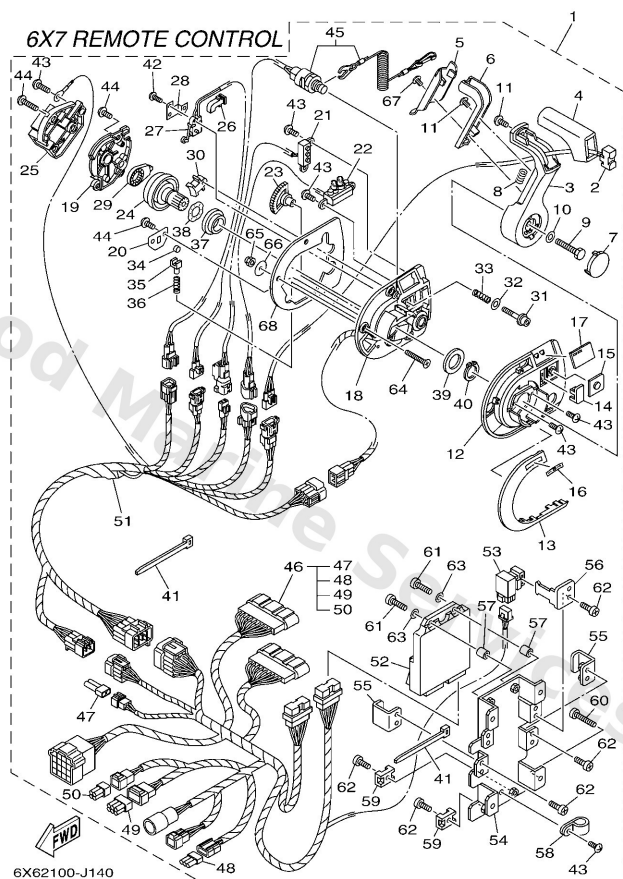
Ref	Part	
16	<a href="#">6X74419100</a> Indicator, shift	<a href="#">Buy now</a>
17	<a href="#">6X74821510</a> Graphic	<a href="#">Buy now</a>
18	<a href="#">6X7481A001</a> Remo-con. case assembly	<a href="#">Buy now</a>
19	<a href="#">6X74821200</a> Back plate 1	<a href="#">Buy now</a>
20	<a href="#">6X74818900</a> Retainer	<a href="#">Buy now</a>
21	<a href="#">6X78259E00</a> Switch assembly	<a href="#">Buy now</a>
22	<a href="#">6X78430100</a> Pilot light assembly 1	<a href="#">Buy now</a>
23	<a href="#">6X74823300</a> Gear 2	<a href="#">Buy now</a>
24	<a href="#">6X74824200</a> Shaft, drive	<a href="#">Buy now</a>
25	<a href="#">6X74822800</a> Holder, switch	<a href="#">Buy now</a>
26	<a href="#">6X78254500</a> Grommet	<a href="#">Buy now</a>
27	<a href="#">6X68254000</a> Neutral switch assembly	<a href="#">Buy now</a>
28	<a href="#">6X64824501</a> Plate, lock	<a href="#">Buy now</a>
29	<a href="#">6X64824100</a> Arm, drive	<a href="#">Buy now</a>
30	<a href="#">6X64826400</a> Friction, throttle	<a href="#">Buy now</a>

## Dbw Remote Control 6 (6X7)



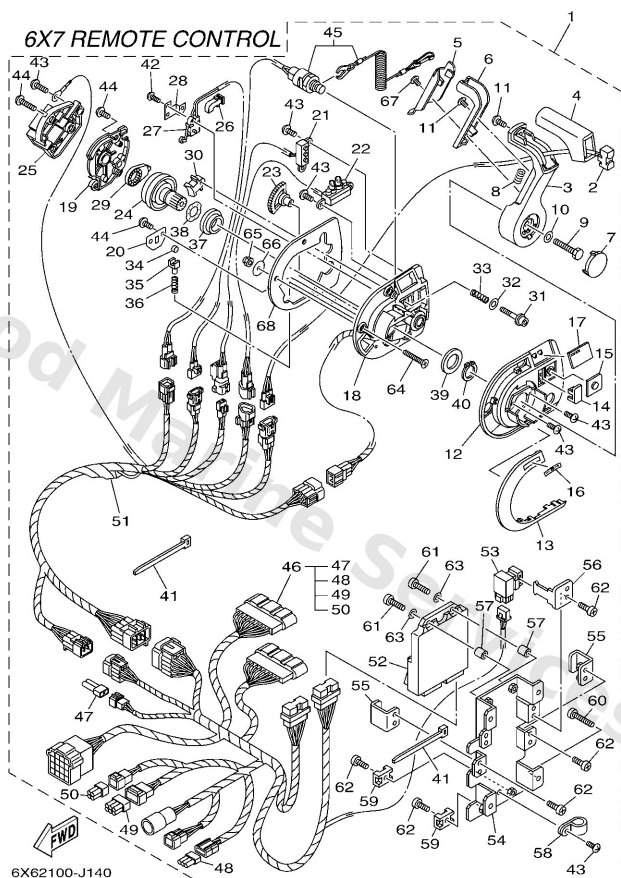
Ref	Part	
31	<a href="#">6X64826700</a> Bolt set	<a href="#">Buy now</a>
32	<a href="#">7044828700</a> Washer 1	<a href="#">Buy now</a>
33	<a href="#">6X64815800</a> Spring 1	<a href="#">Buy now</a>
34	<a href="#">6X64823600</a> Roller, detent	<a href="#">Buy now</a>
35	<a href="#">6X64823700</a> Adaptor	<a href="#">Buy now</a>
36	<a href="#">6X64823800</a> Spring, detent	<a href="#">Buy now</a>
37	<a href="#">6X64823400</a> Bushing 1	<a href="#">Buy now</a>
38	<a href="#">7034819800</a> Washer, wave 3	<a href="#">Buy now</a>
39	<a href="#">6X64819300</a> Washer 3	<a href="#">Buy now</a>
40	<a href="#">6X64811800</a> Clip, shift lever	<a href="#">Buy now</a>
41	<a href="#">7038259100</a> Band	<a href="#">Buy now</a>
42	<a href="#">6X68252V00</a> Screw, special	<a href="#">Buy now</a>
43	<a href="#">6X74812700</a> Screw 1	<a href="#">Buy now</a>
44	<a href="#">EL84812700</a> Screw 1	<a href="#">Buy now</a>
45	<a href="#">6X78257500</a> Engine stop switch assembly	<a href="#">Buy now</a>

## Dbw Remote Control 6 (6X7)



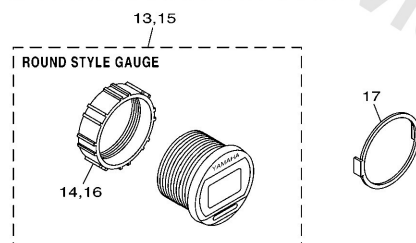
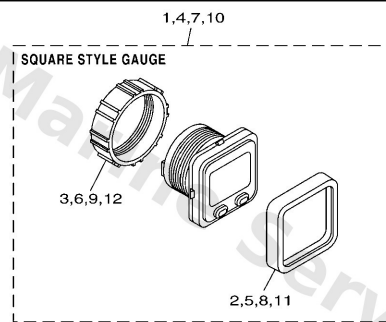
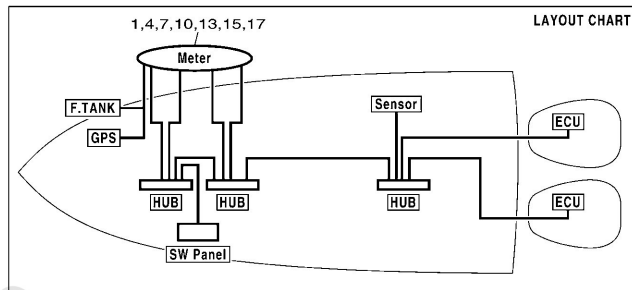
Ref	Part	
46	<a href="#">6X78259040</a> Wire harness assembly	<a href="#">Buy now</a>
47	<a href="#">6X68258520</a> Cap 2 (2p)	<a href="#">Buy now</a>
48	<a href="#">6X682582A0</a> Cap 1 (3p)	<a href="#">Buy now</a>
49	<a href="#">6X68258560</a> Cap 2 (6p)	<a href="#">Buy now</a>
50	<a href="#">6X68258540</a> Cap 2 (4p)	<a href="#">Buy now</a>
51	<a href="#">6X78259020</a> Wire harness assembly	<a href="#">Buy now</a>
52	<a href="#">6X68559020</a> Control unit assembly	<a href="#">Buy now</a>
53	<a href="#">7048195010</a> Relay assembly	<a href="#">Buy now</a>
54	<a href="#">6X64821110</a> Housing,1	<a href="#">Buy now</a>
55	<a href="#">6X68555700</a> Holder	<a href="#">Buy now</a>
56	<a href="#">6X68259100</a> Band	<a href="#">Buy now</a>
57	<a href="#">6X68252S00</a> Spacer, 1	<a href="#">Buy now</a>
58	<a href="#">6X68258400</a> Clamp	<a href="#">Buy now</a>
59	<a href="#">6X68258100</a> Stay, cord clamp	<a href="#">Buy now</a>
60	<a href="#">6X04812800</a> Screw 2	<a href="#">Buy now</a>

## Dbw Remote Control 6 (6X7)



Ref	Part	
61	<a href="#">9858005025</a> Screw, panhead (a93)	<a href="#">Buy now</a>
62	<a href="#">9858005014</a> Screw, pan head(3yl)	<a href="#">Buy now</a>
63	<a href="#">9299005200</a> Ybs66-5 washer, plain	<a href="#">Buy now</a>
64	<a href="#">9778006230</a> Screw, tapping UR	<a href="#">Buy now</a>
64	<a href="#">9878006035</a> Screw flat head UR	<a href="#">Buy now</a>
65	<a href="#">6X04815600</a> Nut 1	<a href="#">Buy now</a>
66	<a href="#">7014828700</a> Washer 1	<a href="#">Buy now</a>
67	<a href="#">6X74812800</a> Screw 2	<a href="#">Buy now</a>
68	<a href="#">6X74817610</a> Grommet	<a href="#">Buy now</a>

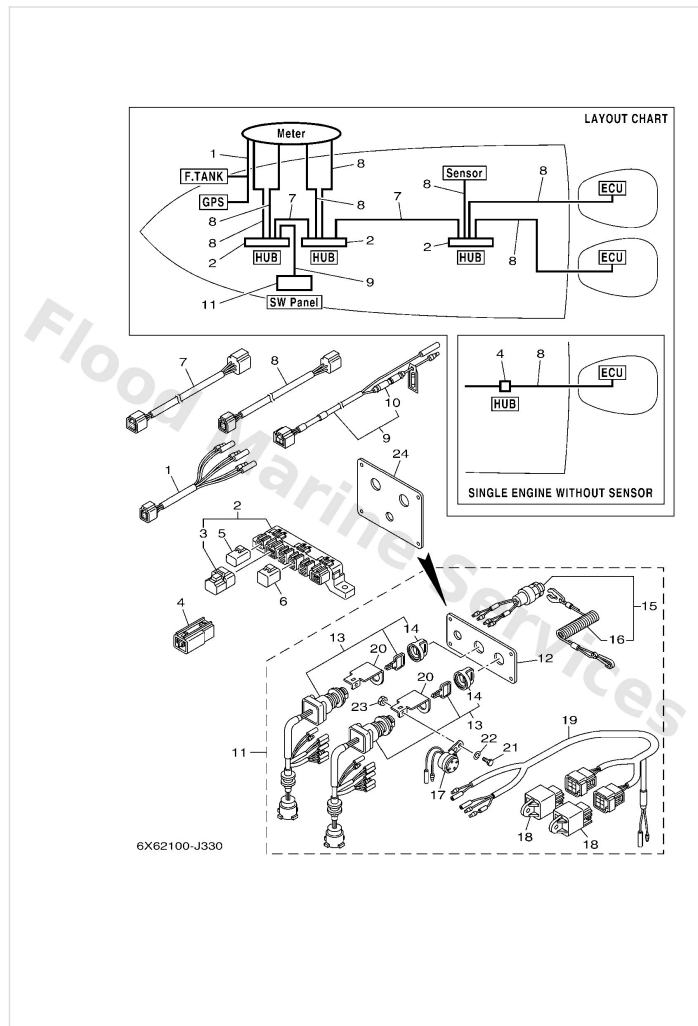
# Digital Network Gauge 1



6011100-G880

Ref	Part	
1	<a href="#">6Y88350T01</a> Tachometer, sq	<a href="#">Buy now</a>
2	<a href="#">6Y88336300</a> Bezel, square	<a href="#">Buy now</a>
3	<a href="#">6Y88438300</a> Nut, ring	<a href="#">Buy now</a>
4	<a href="#">6Y88350S01</a> Speedometer Sq	<a href="#">Buy now</a>
7	<a href="#">6Y88350F01</a> Fl mgt meter, sq FUEL MANAGEMENT	<a href="#">Buy now</a>
10	<a href="#">6Y88350001</a> S&fm meter, sq SPEED & FUEL	<a href="#">Buy now</a>
13	<a href="#">6Y88350T11</a> Tachometer, rd	<a href="#">Buy now</a>
15	<a href="#">6Y88350011</a> S & fm meter, rd SPEED & FUEL	<a href="#">Buy now</a>
17	<a href="#">6Y88351400</a> Plate, fitting UN	<a href="#">Buy now</a>

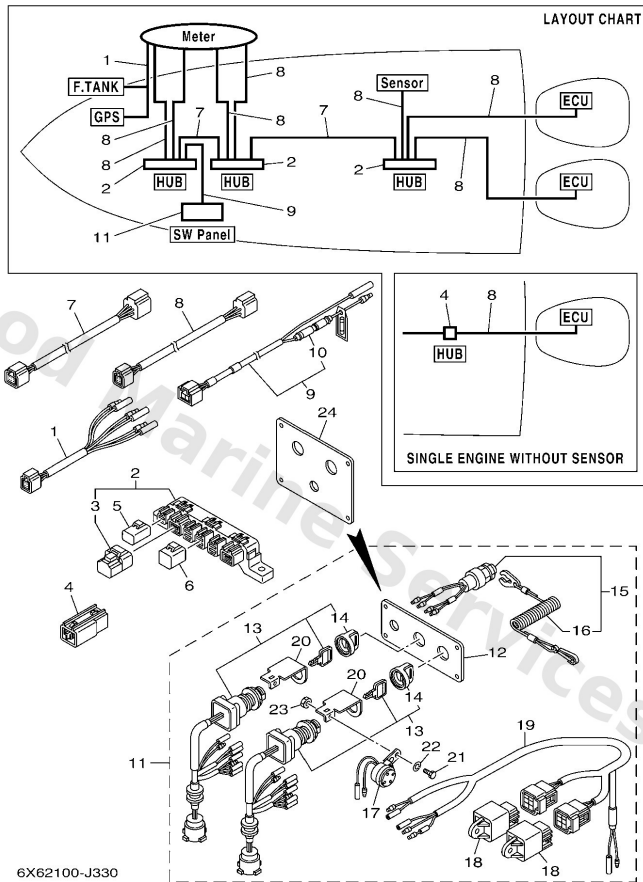
## Digital Network Gauge 2



Ref	Part	
1	<a href="#">6Y88356N01</a> Lead, fuel tank & gps sender	<a href="#">Buy now</a>
2	<a href="#">6Y88192001</a> Multi-hub UN	<a href="#">Buy now</a>
3	<a href="#">6Y88537101</a> End of line resistor	<a href="#">Buy now</a>
4	<a href="#">6Y88192011</a> Single-hub	<a href="#">Buy now</a>
5	<a href="#">6Y88258201</a> Red cap 1 (2pin) UN	<a href="#">Buy now</a>
6	<a href="#">6Y88258211</a> White cap 1 (4pin) UN	<a href="#">Buy now</a>
7	<a href="#">6Y88255301</a> Main bus wire 0.3m-1ft UR	<a href="#">Buy now</a>
7	<a href="#">6Y88255311</a> Main bus wire 4.6m (15ft) UR	<a href="#">Buy now</a>
7	<a href="#">6Y88255321</a> Main bus wire 6.1m (20ft) UR	<a href="#">Buy now</a>
7	<a href="#">6Y88255331</a> Main bus wire 7.6m (25ft) UR	<a href="#">Buy now</a>
7	<a href="#">6Y88255341</a> Main bus wire 9.1m (30ft) UR	<a href="#">Buy now</a>
7	<a href="#">6Y88255350</a> Main bus wire 3.0m-10ft UR	<a href="#">Buy now</a>
8	<a href="#">6Y88252101</a> 1ft pigtail bus UR	<a href="#">Buy now</a>
8	<a href="#">6Y88252111</a> Pigtail bus wire 0.6m-2ft UR	<a href="#">Buy now</a>
8	<a href="#">6Y88252121</a> Pigtail bus wire 0.9m-3ft UR	<a href="#">Buy now</a>



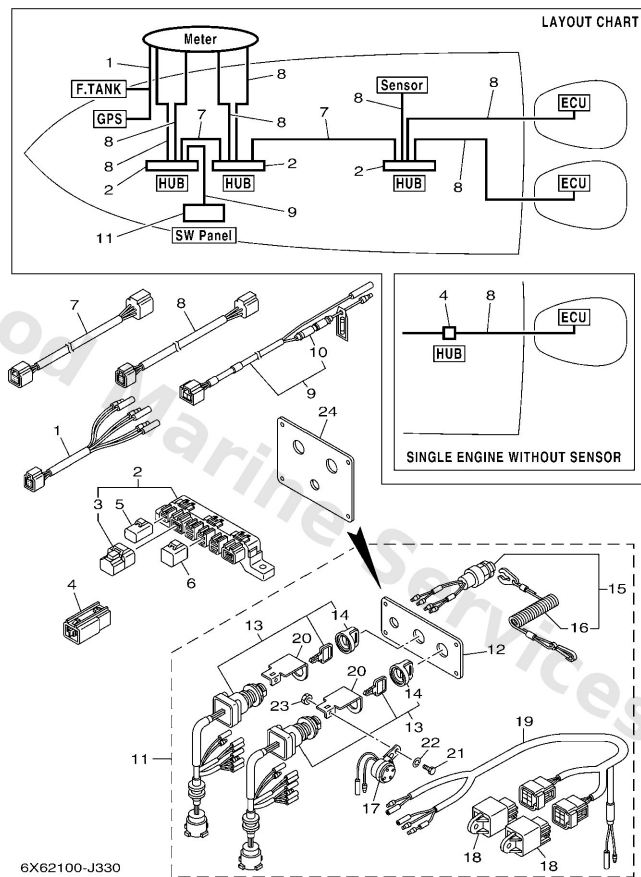
## Digital Network Gauge 2



Ref	Part	
8	<a href="#">6Y88252131</a> Pigtail bus wire 1.8m-6ft UR	<a href="#">Buy now</a>
8	<a href="#">6Y88252141</a> 9ft pigtail bus UR	<a href="#">Buy now</a>
8	<a href="#">6Y88252151</a> Pigtail bus wire 3.6m-12ft UR	<a href="#">Buy now</a>
9	<a href="#">6Y88355301</a> 8ft power wire	<a href="#">Buy now</a>
10	<a href="#">6G18215100</a> Fuse (10a)	<a href="#">Buy now</a>
11	<a href="#">6Y88257002</a> Panel switch assembly	<a href="#">Buy now</a>
12	<a href="#">6Y88257101</a> Plate, panel switch	<a href="#">Buy now</a>
13	<a href="#">6Y88251002</a> Main switch assembly	<a href="#">Buy now</a>
14	<a href="#">6768257700</a> Cap, key	<a href="#">Buy now</a>
15	<a href="#">6K18257500</a> Engine stop switch assembly	<a href="#">Buy now</a>
16	<a href="#">6828255600</a> Lanyard, stop switch	<a href="#">Buy now</a>
17	<a href="#">6R58338300</a> Buzzer	<a href="#">Buy now</a>
18	<a href="#">68V8195000</a> Relay assembly	<a href="#">Buy now</a>
19	<a href="#">6Y88250700</a> Lead, ignition switch relay	<a href="#">Buy now</a>
20	<a href="#">64D8258100</a> Stay, cord clamp	<a href="#">Buy now</a>

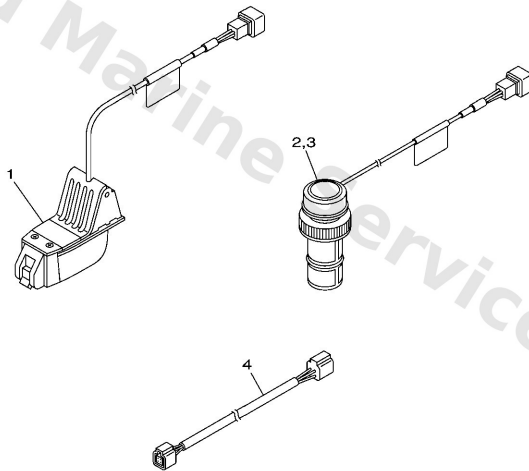
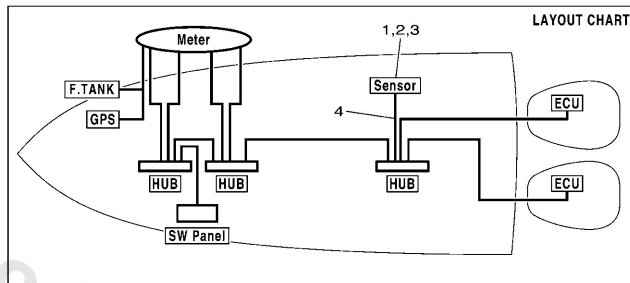


## Digital Network Gauge 2



Ref	Part	
21	<a href="#">9730305012</a> Bolt, hexagon	<a href="#">Buy now</a>
22	<a href="#">9290305100</a> Ybs67-5 washer, spring	<a href="#">Buy now</a>
23	<a href="#">9530305700</a> Nut (656)	<a href="#">Buy now</a>
24	<a href="#">6K18257102</a> Plate, panel switch	<a href="#">Buy now</a>

## Digital Network Gauge 3



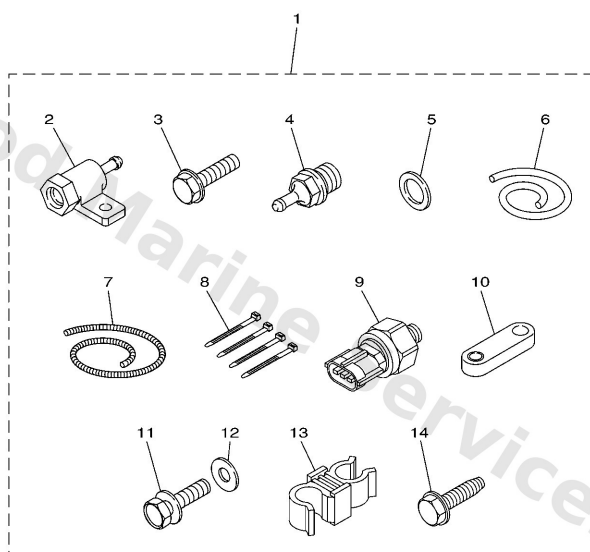
6Y82110-E030

Ref	Part	
1	<a href="#">6Y88368801</a> Transom Mount Triducer	<a href="#">Buy now</a>
2	<a href="#">6Y88368811</a> Plastic Thru-Hull Triducer PLASTIC BODY	<a href="#">Buy now</a>
3	<a href="#">6Y88368820</a> Bronze Thru-Hull Triducer BRONZE BODY	<a href="#">Buy now</a>
4	<a href="#">6Y88252101</a> 1ft pigtail bus UR	<a href="#">Buy now</a>
4	<a href="#">6Y88252111</a> Pigtail bus wire 0.6m-2ft UR	<a href="#">Buy now</a>
4	<a href="#">6Y88252121</a> Pigtail bus wire 0.9m-3ft UR	<a href="#">Buy now</a>
4	<a href="#">6Y88252131</a> Pigtail bus wire 1.8m-6ft UR	<a href="#">Buy now</a>
4	<a href="#">6Y88252141</a> 9ft pigtail bus UR	<a href="#">Buy now</a>
4	<a href="#">6Y88252151</a> Pigtail bus wire 3.6m-12ft UR	<a href="#">Buy now</a>

## Digital Network Gauge 4

### Cooling water pressure sensor

Part No.	Remarks
60V-8A4L0-12	Fuel injected F30-F115, HPDI



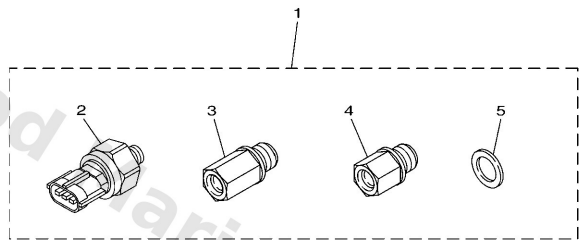
601M10M-J150

Ref	Part	
1	<a href="#">60V8A4L012</a> Sensor, module	<a href="#">Buy now</a>
2	<a href="#">60V8366D00</a> Adaptor, input	<a href="#">Buy now</a>
3	<a href="#">9589506025</a> Bolt, flange deep recess	<a href="#">Buy now</a>
4	<a href="#">60V8366700</a> Sender, water pressure	<a href="#">Buy now</a>
5	<a href="#">9043014115</a> Gasket (663)	<a href="#">Buy now</a>
6	<a href="#">9044507018</a> Hose (I1457)	<a href="#">Buy now</a>
7	<a href="#">9044707015</a> Hose, cover (l: 1300mm)	<a href="#">Buy now</a>
8	<a href="#">9046511M10</a> Clamp	<a href="#">Buy now</a>
9	<a href="#">6AW8366B00</a> Sensor, water pressure	<a href="#">Buy now</a>
10	<a href="#">60V8257V00</a> Plate, connector	<a href="#">Buy now</a>
11	<a href="#">9709506016</a> Bolt, hexagon deep recess	<a href="#">Buy now</a>
12	<a href="#">9299506600</a> Washer, plain (646)	<a href="#">Buy now</a>
13	<a href="#">9046409021</a> Clamp	<a href="#">Buy now</a>
14	<a href="#">9010906M81</a> Bolt	<a href="#">Buy now</a>

# Digital Network Gauge 5

Cooling water pressure sensor

Part No.	Remarks
69J-8A4L0-11	F150-F250



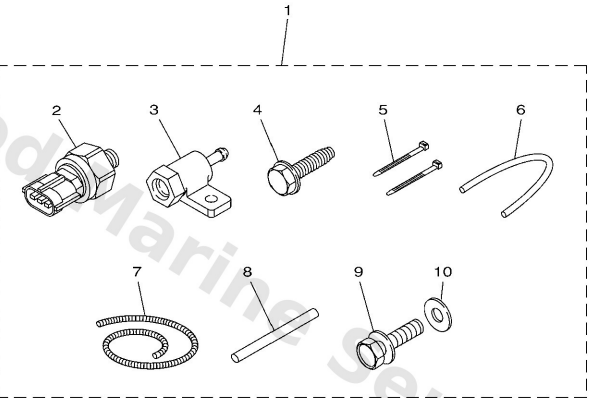
601M10M-H160

Ref	Part	
1	<a href="#">69J8A4L011</a> Water pressure sensor kit	<a href="#">Buy now</a>
2	<a href="#">6AW8366B00</a> Sensor, water pressure	<a href="#">Buy now</a>
3	<a href="#">69J8366C00</a> Adaptor, input	<a href="#">Buy now</a>
4	<a href="#">63P8366C00</a> Adaptor, input	<a href="#">Buy now</a>
5	<a href="#">9043014115</a> Gasket (663)	<a href="#">Buy now</a>

# Digital Network Gauge 6

Speed sensor

Part No.	Remarks
60V-8A4L1-11	Fuel injected F30-F250, HPDI



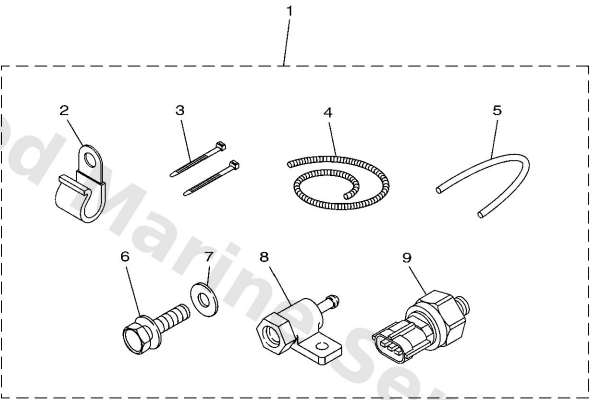
6X62100-J370

Ref	Part	
1	<a href="#">60V8A4L111</a> Sensor, module 1	<a href="#">Buy now</a>
2	<a href="#">6AW8366B00</a> Sensor, water pressure	<a href="#">Buy now</a>
3	<a href="#">60V8366D00</a> Adaptor, input	<a href="#">Buy now</a>
4	<a href="#">9010906M81</a> Bolt	<a href="#">Buy now</a>
5	<a href="#">9046511M10</a> Clamp	<a href="#">Buy now</a>
6	<a href="#">9044507017</a> Hose (I550)	<a href="#">Buy now</a>
7	<a href="#">9044707013</a> Hose, cover (I: 700mm)	<a href="#">Buy now</a>
8	<a href="#">60V4262900</a> Seal	<a href="#">Buy now</a>
9	<a href="#">9709506016</a> Bolt, hexagon deep recess	<a href="#">Buy now</a>
10	<a href="#">9299506600</a> Washer, plain (646)	<a href="#">Buy now</a>

# Digital Network Gauge 7

Speed sensor

Part No.	Remarks
6AW-8A4L1-01	F300/F350 * Additional transom pitot tube (688-83556-01) and pressure tube(688-83557-00) required.

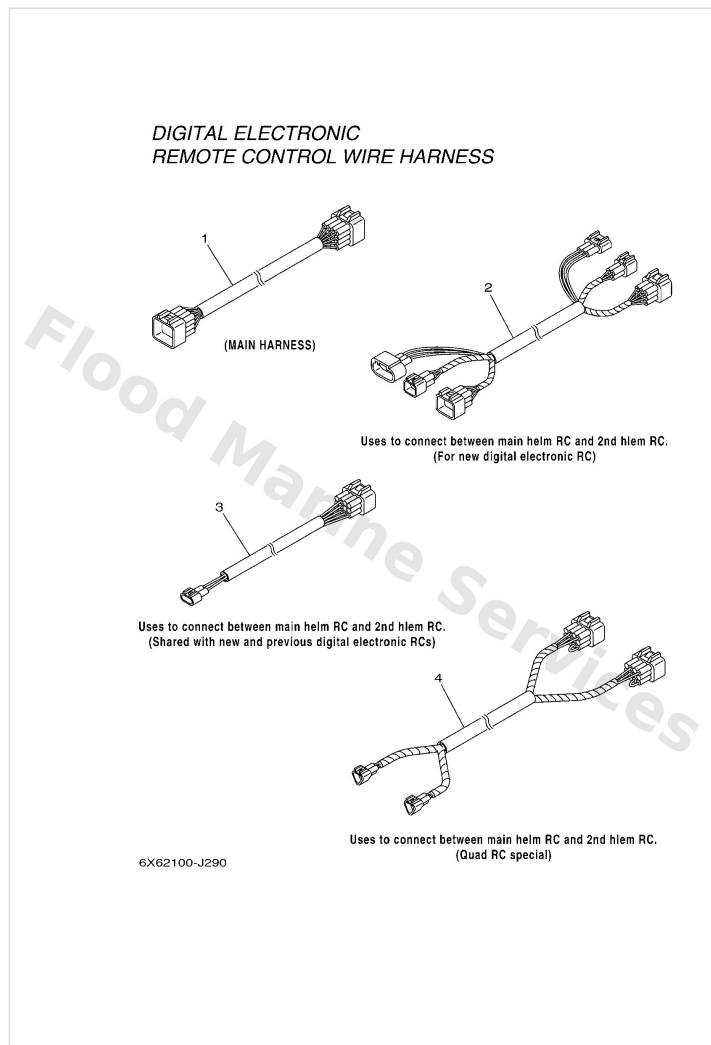


601M10M-H180

Ref	Part	
1	<a href="#">6AW8A4L101</a> Sensor, module 1	<a href="#">Buy now</a>
2	<a href="#">9046506M86</a> Clamp	<a href="#">Buy now</a>
3	<a href="#">9046514M66</a> Clamp	<a href="#">Buy now</a>
4	<a href="#">9044707015</a> Hose, cover (l: 1300mm)	<a href="#">Buy now</a>
5	<a href="#">9044507018</a> Hose (l:1457)	<a href="#">Buy now</a>
6	<a href="#">9709506016</a> Bolt, hexagon deep recess	<a href="#">Buy now</a>
7	<a href="#">9299506600</a> Washer, plain (646)	<a href="#">Buy now</a>
8	<a href="#">60V8366D00</a> Adaptor, input	<a href="#">Buy now</a>
9	<a href="#">6AW8366B00</a> Sensor, water pressure	<a href="#">Buy now</a>



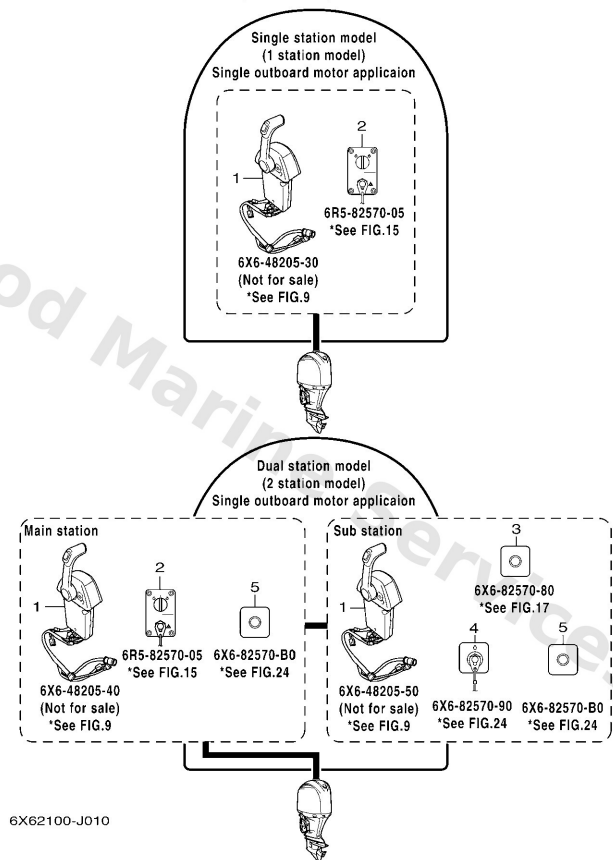
# Electrical Wire Harness



Ref	Part	
1	<a href="#">6X68258A00</a> Extension, wire harness(6.1m) UR FOR SINGLE	<a href="#">Buy now</a>
1	<a href="#">6X68258A10</a> 16p dbw main harness 7m-23ft UR FOR SINGLE	<a href="#">Buy now</a>
1	<a href="#">6X68258A20</a> 16p dbw main harness 8m-26ft UR FOR SINGLE	<a href="#">Buy now</a>
1	<a href="#">6X68258A30</a> 16p dbw main harness 10m-32ft UR FOR SINGLE	<a href="#">Buy now</a>
1	<a href="#">6X68258A40</a> 16p dbw main harness 12m-38ft UR FOR SINGLE	<a href="#">Buy now</a>
2	<a href="#">6X68258AG0</a> Extension, wire harness (5m) UR FOR SINGLE	<a href="#">Buy now</a>
2	<a href="#">6X68258AH0</a> Extension, wire harness (8m) UR FOR SINGLE	<a href="#">Buy now</a>
2	<a href="#">6X68258AJ0</a> Extension, wire harness (12.2m) UR FOR SINGLE	<a href="#">Buy now</a>
3	<a href="#">6X68258AB1</a> #xtension, wire harness UR FOR SINGLE	<a href="#">Buy now</a>
3	<a href="#">6X68258AD1</a> Extension, wire harness UR FOR SINGLE	<a href="#">Buy now</a>
3	<a href="#">6X68258AF1</a> Extension, wire harness UR FOR SINGLE	<a href="#">Buy now</a>
4	<a href="#">6X68258AR0</a> Extension, wire harness (5m) UR FOR QUAD	<a href="#">Buy now</a>
4	<a href="#">6X68258AS0</a> Extension, wire harness (8m) UR FOR QUAD	<a href="#">Buy now</a>
4	<a href="#">6X68258AT0</a> Extension, wire harness: 12.2m UR FOR QUAD	<a href="#">Buy now</a>

# Layout Chart 1 (Single)

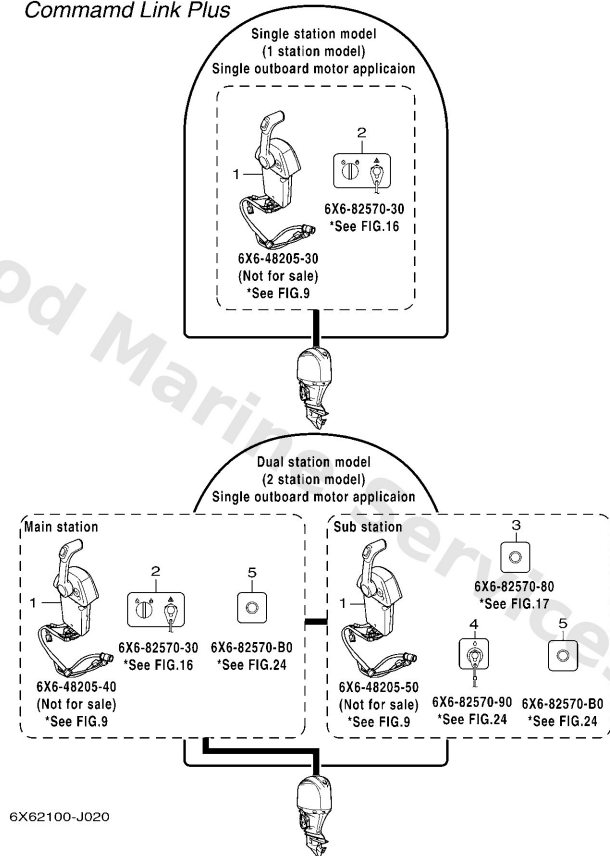
## OLD COMBINATION (SINGLE)



Ref	Part	
1	<a href="#">6X64820530</a> Ctrl Sgl Std NOT FOR SALE	<a href="#">Buy now</a>
1	<a href="#">6X64820540</a> Remote Control assembly (Single) NOT FOR SALE	<a href="#">Buy now</a>
1	<a href="#">6X64820550</a> Remote Control assembly (Single) NOT FOR SALE	<a href="#">Buy now</a>
2	<a href="#">6R58257005</a> Panel switch assembly & 2 STATION MAIN	<a href="#">Buy now</a>
3	<a href="#">6X68257080</a> Panel switch assembly - 2nd stn STATION SUB	<a href="#">Buy now</a>
4	<a href="#">6X68257090</a> Lanyard switch -2nd station STATION SUB	<a href="#">Buy now</a>
5	<a href="#">6X682570B0</a> Switch - station dual selector STATION MAIN & SUB	<a href="#">Buy now</a>

## Layout Chart 2 (Single)

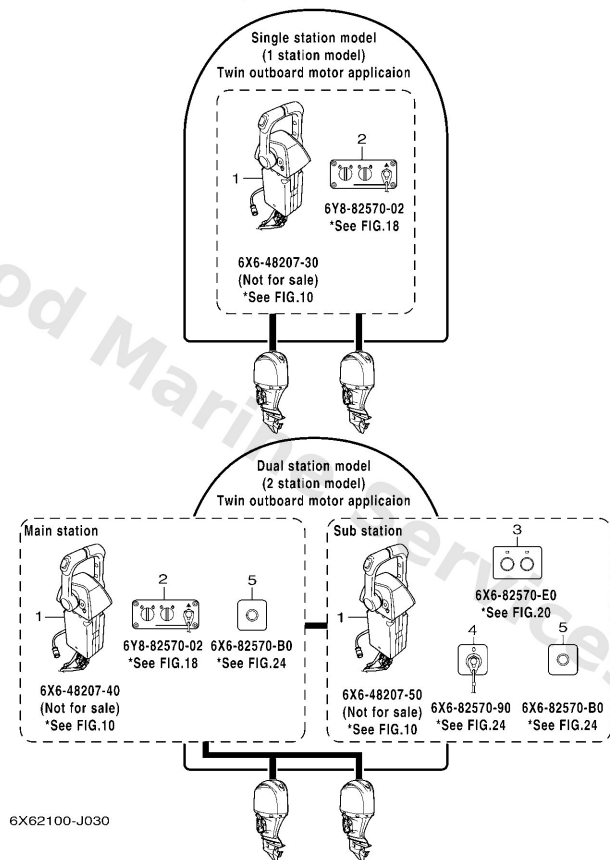
### NEW COMBINATION (SINGLE) Command Link Plus



Ref	Part	
1	<a href="#">6X64820530</a> Ctrl Sgl Std NOT FOR SALE	<a href="#">Buy now</a>
1	<a href="#">6X64820540</a> Remote Control assembly (Single) NOT FOR SALE	<a href="#">Buy now</a>
1	<a href="#">6X64820550</a> Remote Control assembly (Single) NOT FOR SALE	<a href="#">Buy now</a>
2	<a href="#">6X68257030</a> Switch panel dbw (single) & 2 STATION MAIN	<a href="#">Buy now</a>
3	<a href="#">6X68257080</a> Panel switch assembly - 2nd stn STATION SUB	<a href="#">Buy now</a>
4	<a href="#">6X68257090</a> Lanyard switch -2nd station STATION SUB	<a href="#">Buy now</a>
5	<a href="#">6X682570B0</a> Switch - station dual selector STATION MAIN & SUB	<a href="#">Buy now</a>

## Layout Chart 3 (Twin)

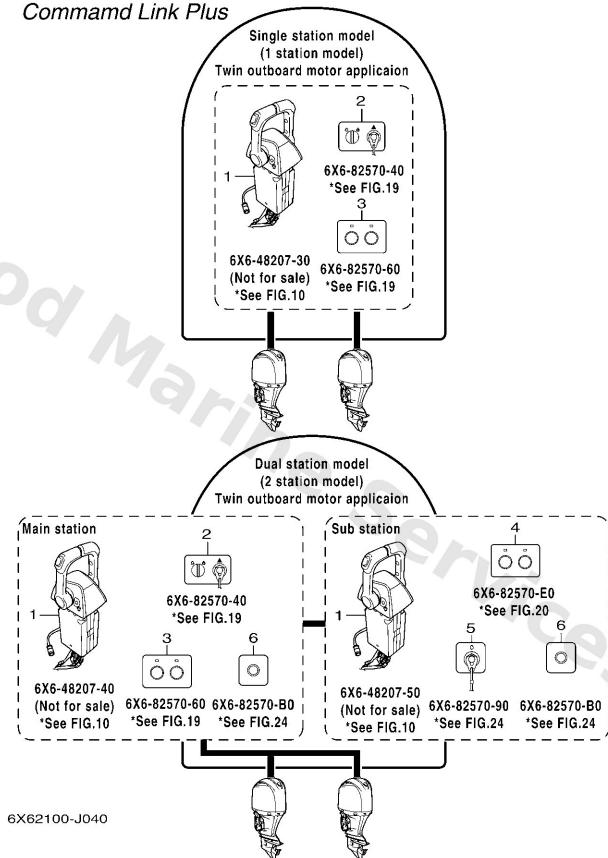
### OLD COMBINATION (TWIN)



Ref	Part	
1	<a href="#">6X64820730</a> 6X6 Rc Twn Top Mount Sgl Stn NOT FOR SALE	<a href="#">Buy now</a>
1	<a href="#">6X64820740</a> Remote Control assembly (Twin) NOT FOR SALE	<a href="#">Buy now</a>
1	<a href="#">6X64820750</a> Remote Control assembly (Twin) NOT FOR SALE	<a href="#">Buy now</a>
2	<a href="#">6Y88257002</a> Panel switch assembly & 2 STATION MAIN	<a href="#">Buy now</a>
3	<a href="#">6X682570E0</a> Panel switch assembly STATION SUB	<a href="#">Buy now</a>
4	<a href="#">6X68257090</a> Lanyard switch -2nd station STATION SUB	<a href="#">Buy now</a>
5	<a href="#">6X682570B0</a> Switch - station dual selector STATION MAIN & SUB	<a href="#">Buy now</a>

## Layout Chart 4 (Twin)

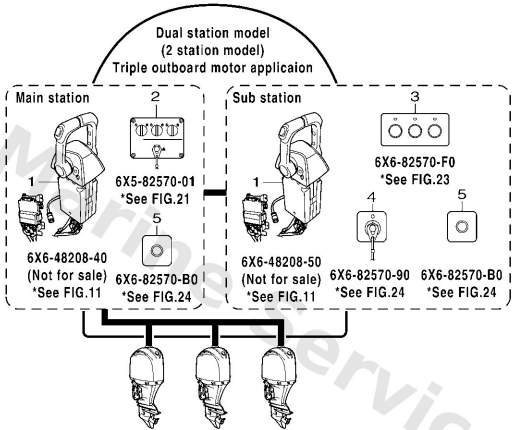
### NEW COMBINATION (TWIN) Command Link Plus



Ref	Part	
1	<a href="#">6X64820730</a> 6X6 Rc Twn Top Mount Sgl Stn NOT FOR SALE	<a href="#">Buy now</a>
1	<a href="#">6X64820740</a> Remote Control assembly (Twin) NOT FOR SALE	<a href="#">Buy now</a>
1	<a href="#">6X64820750</a> Remote Control assembly (Twin) NOT FOR SALE	<a href="#">Buy now</a>
2	<a href="#">6X68257040</a> Switch panel dbw (twin) & 2 STATION MAIN	<a href="#">Buy now</a>
3	<a href="#">6X68257060</a> - & 2 STATION MAIN	<a href="#">Buy now</a>
4	<a href="#">6X682570E0</a> Panel switch assembly STATION SUB	<a href="#">Buy now</a>
5	<a href="#">6X68257090</a> Lanyard switch -2nd station STATION SUB	<a href="#">Buy now</a>
6	<a href="#">6X682570B0</a> Switch - station dual selector STATION MAIN & SUB	<a href="#">Buy now</a>

# Layout Chart 5 (Triple)

OLD COMBINATION (TRIPLE)



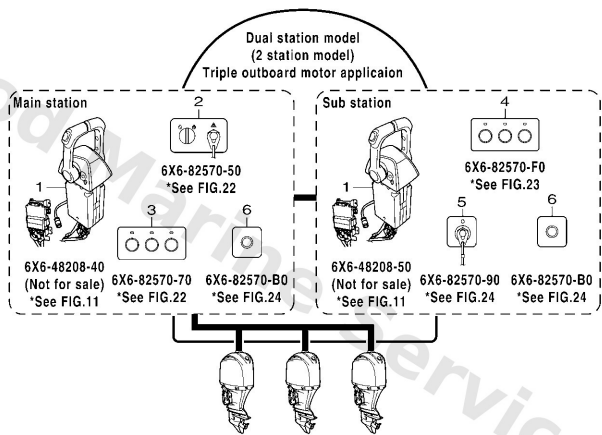
6X62100-J050

Ref	Part	
1	<a href="#">6X64820840</a> 6x6 rc trple top mount sgl stn NOT FOR SALE	<a href="#">Buy now</a>
1	<a href="#">6X64820850</a> Remote Control assembly (Triple) NOT FOR SALE	<a href="#">Buy now</a>
2	<a href="#">6X58257001</a> Panel switch assembly & 2 STATION MAIN	<a href="#">Buy now</a>
3	<a href="#">6X682570F0</a> Panel switch assembly STATION SUB	<a href="#">Buy now</a>
4	<a href="#">6X68257090</a> Lanyard switch -2nd station STATION SUB	<a href="#">Buy now</a>
5	<a href="#">6X682570B0</a> Switch - station dual selector STATION MAIN & SUB	<a href="#">Buy now</a>



# Layout Chart 6 (Triple)

NEW COMBINATION (TRIPLE)  
Command Link Plus

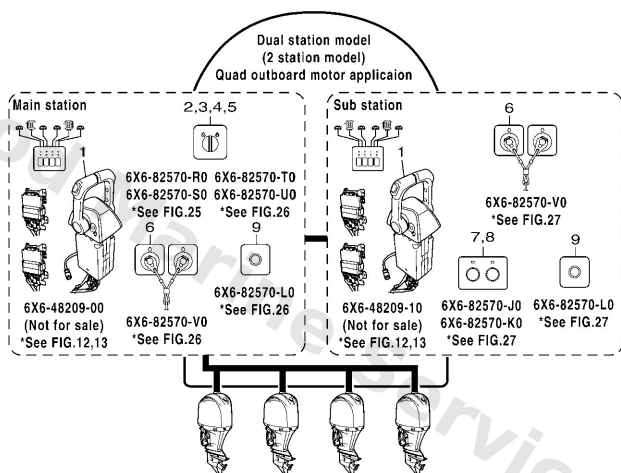


6X62100-J060

Ref	Part	
1	<a href="#">6X64820840</a> 6x6 rc trple top mount sgl stn NOT FOR SALE	<a href="#">Buy now</a>
1	<a href="#">6X64820850</a> Remote Control assembly (Triple) NOT FOR SALE	<a href="#">Buy now</a>
2	<a href="#">6X68257050</a> Panel Switch assembly & 2 STATION MAIN	<a href="#">Buy now</a>
3	<a href="#">6X68257070</a> - & 2 STATION MAIN	<a href="#">Buy now</a>
4	<a href="#">6X682570F0</a> Panel switch assembly STATION SUB	<a href="#">Buy now</a>
5	<a href="#">6X68257090</a> Lanyard switch -2nd station STATION SUB	<a href="#">Buy now</a>
6	<a href="#">6X682570B0</a> Switch - station dual selector STATION MAIN & SUB	<a href="#">Buy now</a>

## Layout Chart 7 (Quad)

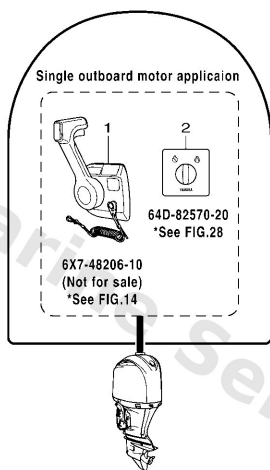
### NEW COMBINATION (QUAD) Command Link Plus



6X62100-J070

Ref	Part	
1	<a href="#">6X64820900</a> Remote Control assembly (Quad) <b>NOT FOR SALE</b>	<a href="#">Buy now</a>
1	<a href="#">6X64820910</a> Remote Control assembly (Quad) <b>NOT FOR SALE</b>	<a href="#">Buy now</a>
2	<a href="#">6X682570R0</a> Panel switch assembly & 2 STATION MAIN	<a href="#">Buy now</a>
3	<a href="#">6X682570S0</a> Panel switch assembly & 2 STATION MAIN	<a href="#">Buy now</a>
4	<a href="#">6X682570T0</a> Panel switch assembly & 2 STATION MAIN	<a href="#">Buy now</a>
5	<a href="#">6X682570U0</a> Panel switch assembly & 2 STATION MAIN	<a href="#">Buy now</a>
6	<a href="#">6X682570V0</a> Panel switch assembly STATION MAIN & SUB	<a href="#">Buy now</a>
7	<a href="#">6X682570J0</a> Panel switch assembly STATION SUB	<a href="#">Buy now</a>
8	<a href="#">6X682570K0</a> Panel switch assembly STATION SUB	<a href="#">Buy now</a>
9	<a href="#">6X682570L0</a> Panel switch assembly STATION MAIN & SUB	<a href="#">Buy now</a>

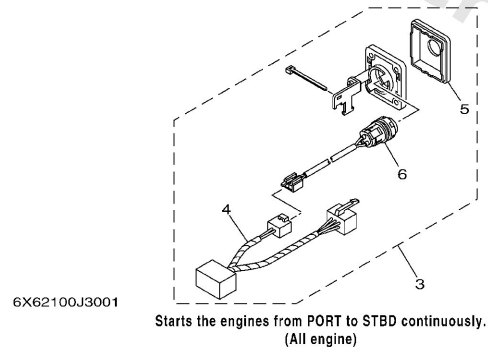
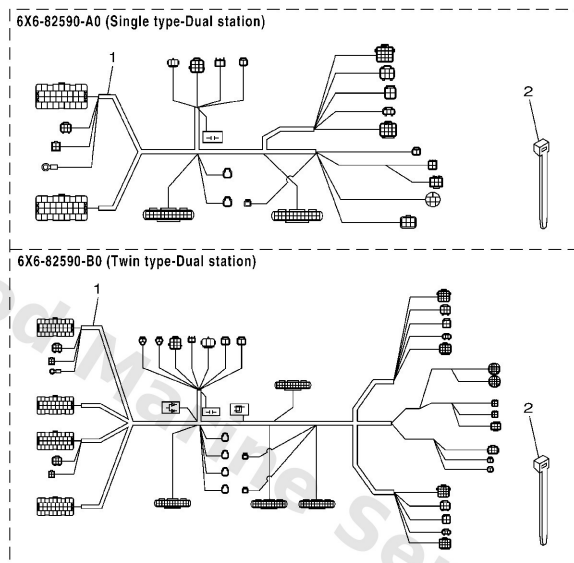
## Layout Chart 8 (6X7)



6X62100-J080

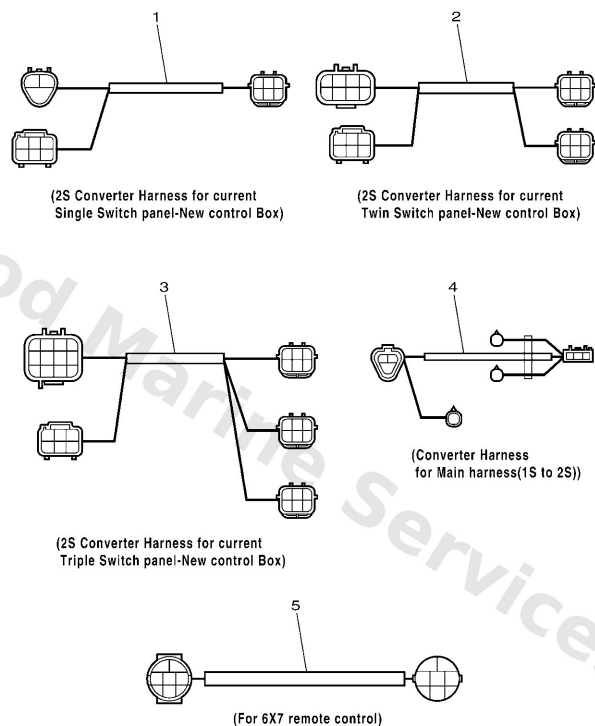
Ref	Part	
1	<a href="#">6X74820610</a> 6x7 dbw flush mount sgl stn <b>NOT FOR SALE</b>	<a href="#">Buy now</a>
2	<a href="#">64D8257020</a> 64d power switch main st	<a href="#">Buy now</a>

## Optional Parts 1



Ref	Part	
1	<a href="#">6X682590A0</a> Wire harness assembly FOR SINGLE	<a href="#">Buy now</a>
1	<a href="#">6X682590B0</a> Wire harness assembly FOR TWIN	<a href="#">Buy now</a>
2	<a href="#">7038259100</a> Band FOR SINGLE	<a href="#">Buy now</a>
3	<a href="#">6X682570C0</a> Panel switch assembly FOR TWIN,TRIPLE	<a href="#">Buy now</a>
4	<a href="#">6X68198020</a> Diode assembly	<a href="#">Buy now</a>
5	<a href="#">6X68257160</a> Panel, switch	<a href="#">Buy now</a>
6	<a href="#">6X68259E20</a> Switch assembly	<a href="#">Buy now</a>

## Optional Parts 2

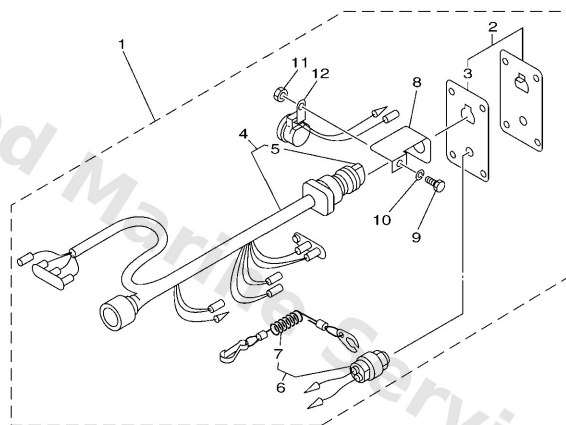


6X62100-J310

Ref	Part	
1	<a href="#">6X68258AM0</a> Extension, wire harness FOR SINGLE SUB	<a href="#">Buy now</a>
2	<a href="#">6X68258AN0</a> Extension, wire harness FOR TWIN SUB	<a href="#">Buy now</a>
3	<a href="#">6X68258AP0</a> Extension, wire harness FOR TRIPLE SUB	<a href="#">Buy now</a>
4	<a href="#">6X68258AK0</a> Extension, wire harness UR FOR SINGLE	<a href="#">Buy now</a>
5	<a href="#">6X78259030</a> Wire harness assembly FOR 6X7 RC	<a href="#">Buy now</a>

## Switch & Panel 1 (Single)

OLD SWITCH PANEL (SINGLE : 1 & 2 STATION-MAIN)

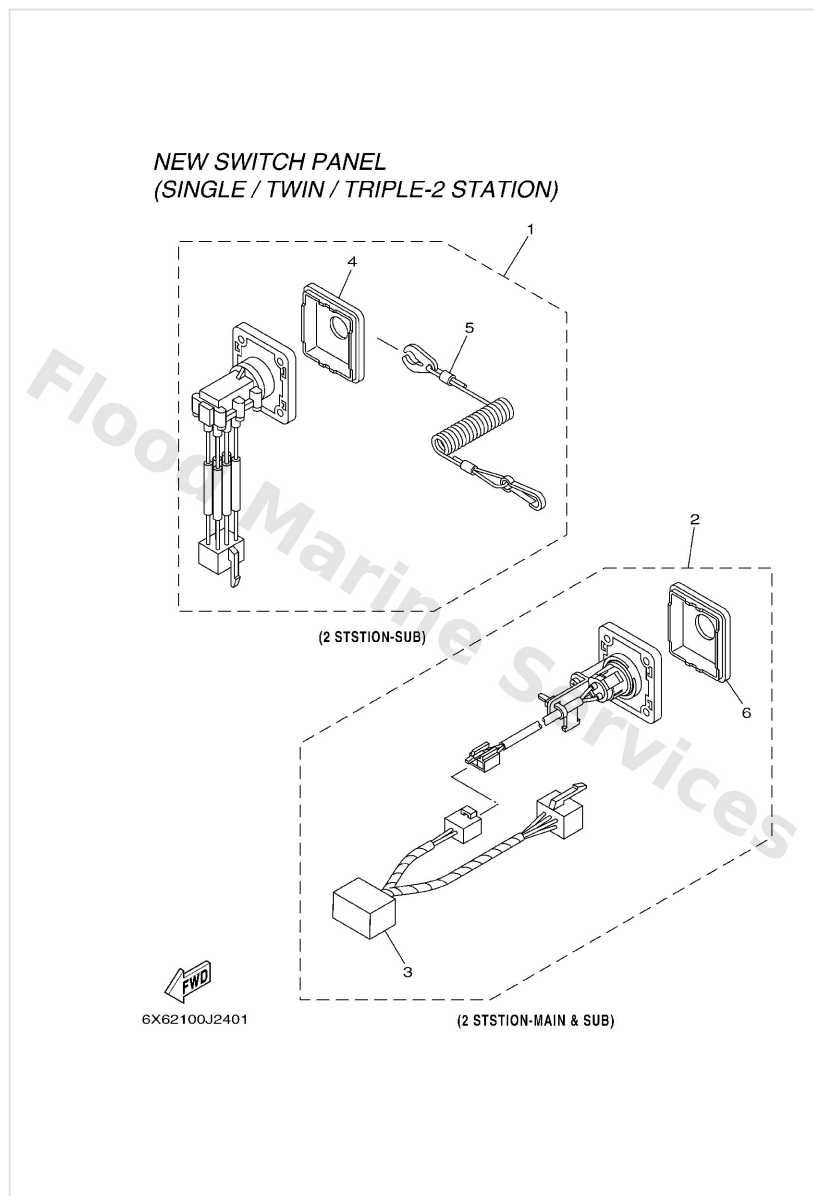


  
6X62100-J150

Ref	Part	
1	<a href="#">6R58257005</a> Panel switch assembly & 2 STATION MAIN	<a href="#">Buy now</a>
2	<a href="#">7048257102</a> Panel, switch	<a href="#">Buy now</a>
3	<a href="#">6R58258801</a> Plate	<a href="#">Buy now</a>
4	<a href="#">6R58251002</a> Main switch assembly	<a href="#">Buy now</a>
5	<a href="#">6768257700</a> Cap, key	<a href="#">Buy now</a>
6	<a href="#">6888257501</a> Engine stop switch assembly	<a href="#">Buy now</a>
7	<a href="#">6828255600</a> Lanyard, stop switch	<a href="#">Buy now</a>
8	<a href="#">64D8258100</a> Stay, cord clamp	<a href="#">Buy now</a>
9	<a href="#">9730305012</a> Bolt, hexagon	<a href="#">Buy now</a>
10	<a href="#">9290305100</a> Ybs67-5 washer, spring	<a href="#">Buy now</a>
11	<a href="#">9530305700</a> Nut (656)	<a href="#">Buy now</a>
12	<a href="#">6R58338300</a> Buzzer	<a href="#">Buy now</a>



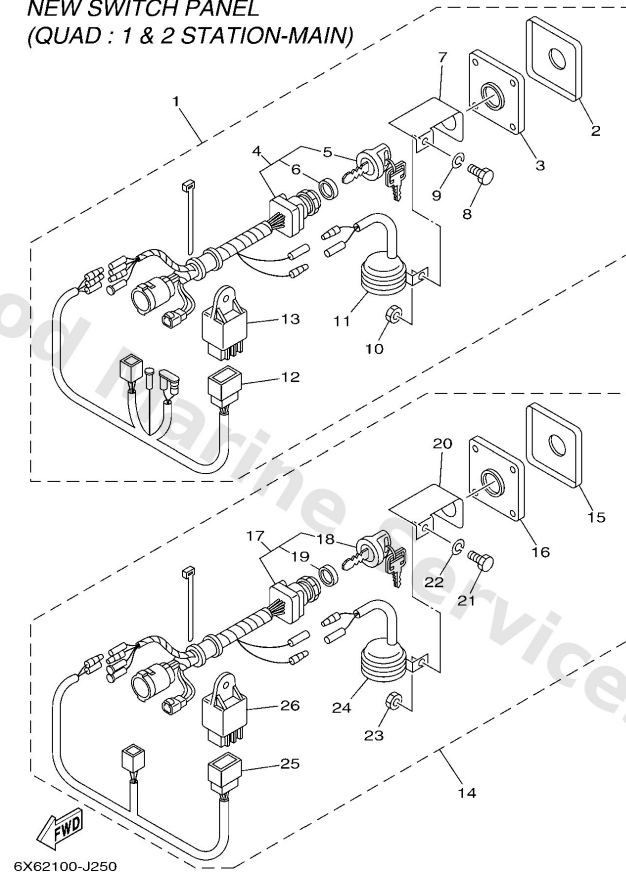
## Switch & Panel 10



Ref	Part	
1	<a href="#">6X68257090</a> Lanyard switch -2nd station STATION SUB	<a href="#">Buy now</a>
2	<a href="#">6X682570B0</a> Switch - station dual selector STATION MAIN & SUB	<a href="#">Buy now</a>
3	<a href="#">6X68198010</a> Diode assembly	<a href="#">Buy now</a>
4	<a href="#">6X68257150</a> Panel, switch	<a href="#">Buy now</a>
5	<a href="#">6828255600</a> Lanyard, stop switch	<a href="#">Buy now</a>
6	<a href="#">6X68257170</a> Panel, switch	<a href="#">Buy now</a>

## Switch & Panel 11 (Quad)

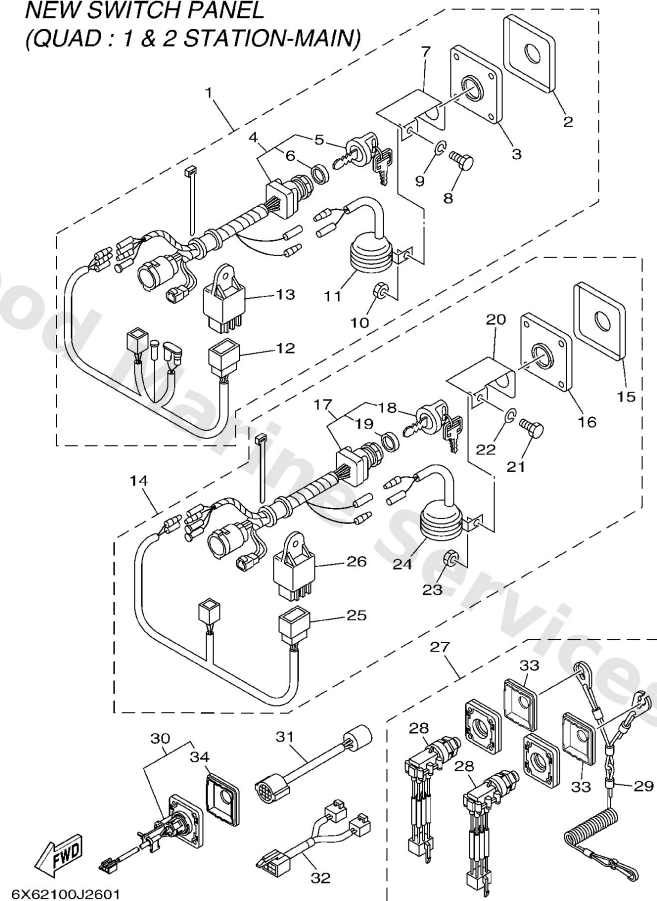
NEW SWITCH PANEL  
(QUAD : 1 & 2 STATION-MAIN)



Ref	Part	
1	<a href="#">6X682570R0</a> Panel switch assembly & 2 STATION MAIN	<a href="#">Buy now</a>
2	<a href="#">64D8257100</a> Panel, switch	<a href="#">Buy now</a>
3	<a href="#">64D8258800</a> Plate	<a href="#">Buy now</a>
4	<a href="#">64D8251020</a> Main switch assembly	<a href="#">Buy now</a>
5	<a href="#">7038257700</a> Cap, key	<a href="#">Buy now</a>
6	<a href="#">6K18253200</a> Cap	<a href="#">Buy now</a>
7	<a href="#">64D8258100</a> Stay, cord clamp	<a href="#">Buy now</a>
8	<a href="#">9709505012</a> Bolt, hexagon	<a href="#">Buy now</a>
9	<a href="#">9290305100</a> Ybs67-5 washer, spring	<a href="#">Buy now</a>
10	<a href="#">9530305700</a> Nut (656)	<a href="#">Buy now</a>
11	<a href="#">6888338311</a> Buzzer	<a href="#">Buy now</a>
12	<a href="#">6X68250700</a> Wire, lead	<a href="#">Buy now</a>
13	<a href="#">68V8195000</a> Relay assembly	<a href="#">Buy now</a>
14	<a href="#">6X682570S0</a> Panel switch assembly & 2 STATION MAIN	<a href="#">Buy now</a>
25	<a href="#">6X68250710</a> Wire, lead	<a href="#">Buy now</a>

## Switch & Panel 12 (Quad)

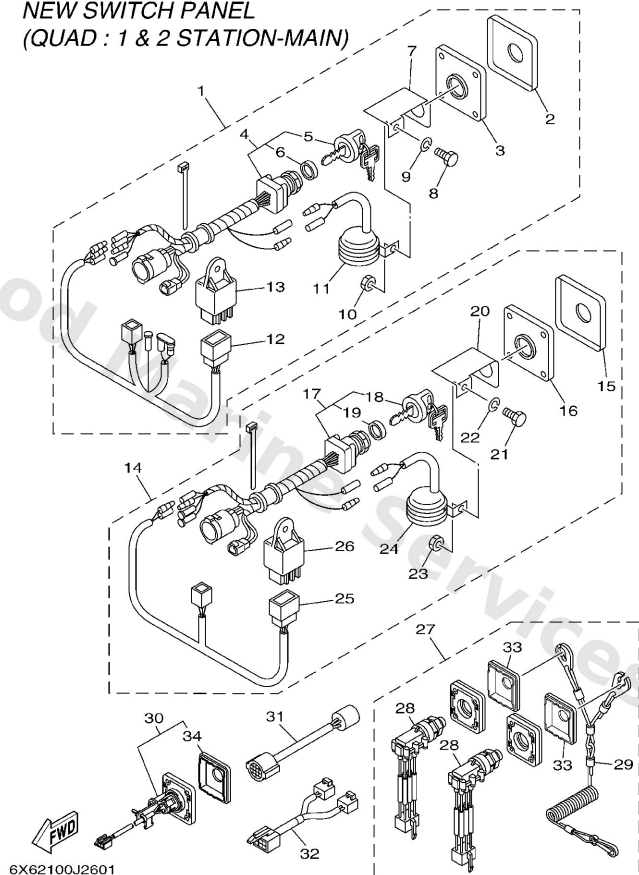
NEW SWITCH PANEL  
(QUAD : 1 & 2 STATION-MAIN)



Ref	Part	
1	<a href="#">6X682570T0</a> Panel switch assembly & 2 STATION MAIN	<a href="#">Buy now</a>
2	<a href="#">64D8257100</a> Panel, switch	<a href="#">Buy now</a>
3	<a href="#">64D8258800</a> Plate	<a href="#">Buy now</a>
4	<a href="#">64D8251020</a> Main switch assembly	<a href="#">Buy now</a>
5	<a href="#">7038257700</a> Cap, key	<a href="#">Buy now</a>
6	<a href="#">6K18253200</a> Cap	<a href="#">Buy now</a>
7	<a href="#">64D8258100</a> Stay, cord clamp	<a href="#">Buy now</a>
8	<a href="#">9709505012</a> Bolt, hexagon	<a href="#">Buy now</a>
9	<a href="#">9290305100</a> Ybs67-5 washer, spring	<a href="#">Buy now</a>
10	<a href="#">9530305700</a> Nut (656)	<a href="#">Buy now</a>
11	<a href="#">6888338311</a> Buzzer	<a href="#">Buy now</a>
12	<a href="#">6X68250720</a> Wire, lead	<a href="#">Buy now</a>
13	<a href="#">68V8195000</a> Relay assembly	<a href="#">Buy now</a>
14	<a href="#">6X682570U0</a> Panel switch assembly & 2 STATION MAIN	<a href="#">Buy now</a>
25	<a href="#">6X68250730</a> Wire, lead	<a href="#">Buy now</a>

## Switch & Panel 12 (Quad)

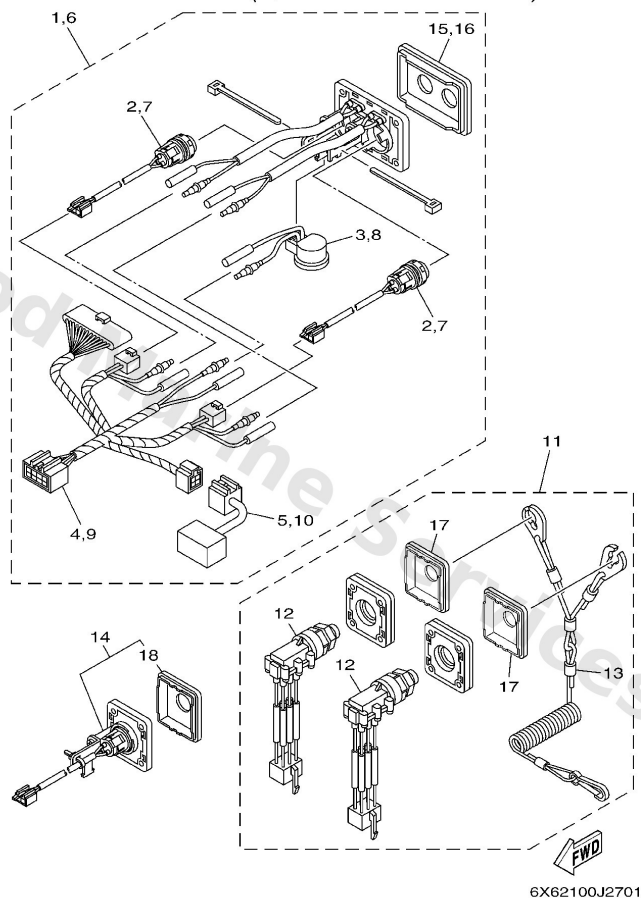
NEW SWITCH PANEL  
(QUAD : 1 & 2 STATION-MAIN)



Ref	Part	
27	<a href="#">6X682570V0</a> Panel switch assembly STATION MAIN & SUB	<a href="#">Buy now</a>
28	<a href="#">6X68257530</a> Engine stop switch assembly	<a href="#">Buy now</a>
29	<a href="#">6X68255600</a> Lanyard, stop switch	<a href="#">Buy now</a>
30	<a href="#">6X682570L0</a> Panel switch assembly STATION MAIN & SUB	<a href="#">Buy now</a>
31	<a href="#">6X68258AL0</a> Extension, wire harness	<a href="#">Buy now</a>
32	<a href="#">6X68258AU0</a> Extension, wire harness	<a href="#">Buy now</a>
33	<a href="#">6X68257150</a> Panel, switch	<a href="#">Buy now</a>
34	<a href="#">6X68257170</a> Panel, switch	<a href="#">Buy now</a>

## Switch & Panel 13 (Quad)

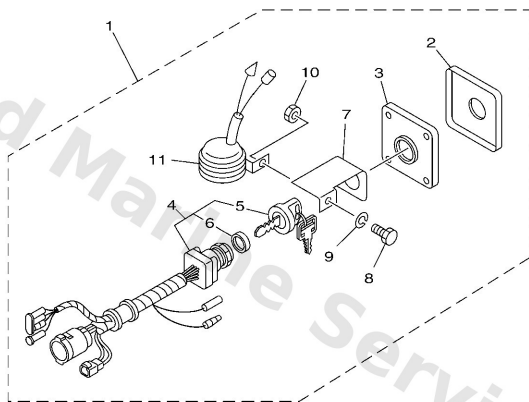
NEW SWITCH PANEL (QUAD : 2 STATION-SUB)



Ref	Part	
1	<a href="#">6X682570J0</a> Panel switch assembly STATION SUB	<a href="#">Buy now</a>
2	<a href="#">6X68259E20</a> Switch assembly	<a href="#">Buy now</a>
3	<a href="#">70383383A0</a> Buzzer	<a href="#">Buy now</a>
4	<a href="#">6X68271640</a> Cord switch	<a href="#">Buy now</a>
5	<a href="#">6X68198000</a> Diode assembly	<a href="#">Buy now</a>
6	<a href="#">6X682570K0</a> Panel switch assembly STATION SUB	<a href="#">Buy now</a>
11	<a href="#">6X682570V0</a> Panel switch assembly STATION MAIN & SUB	<a href="#">Buy now</a>
12	<a href="#">6X68257530</a> Engine stop switch assembly	<a href="#">Buy now</a>
13	<a href="#">6X68255600</a> Lanyard, stop switch	<a href="#">Buy now</a>
14	<a href="#">6X682570L0</a> Panel switch assembly STATION MAIN & SUB	<a href="#">Buy now</a>
15	<a href="#">6X68257180</a> Panel, switch	<a href="#">Buy now</a>
16	<a href="#">6X68257190</a> Panel, switch	<a href="#">Buy now</a>
17	<a href="#">6X68257150</a> Panel, switch	<a href="#">Buy now</a>
18	<a href="#">6X68257170</a> Panel, switch	<a href="#">Buy now</a>

## Switch & Panel 14 (6X7)

SWITCH PANEL (6X7)



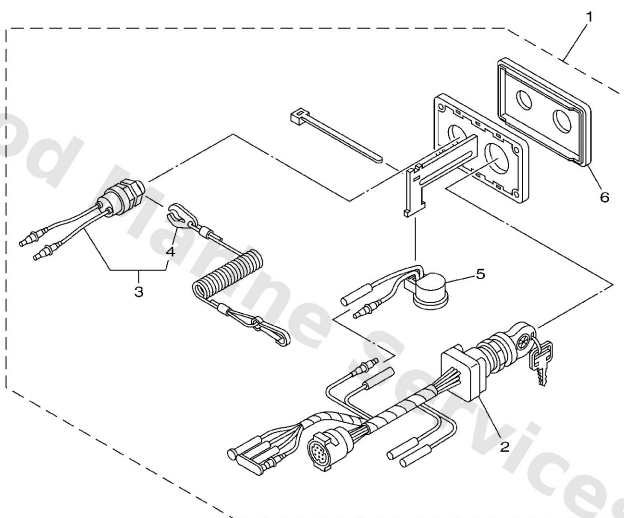
  
6X62100-J280

Ref	Part	
1	<a href="#">64D8257020</a> 64d power switch main st	<a href="#">Buy now</a>
2	<a href="#">64D8257100</a> Panel, switch	<a href="#">Buy now</a>
3	<a href="#">64D8258800</a> Plate	<a href="#">Buy now</a>
4	<a href="#">64D8251020</a> Main switch assembly	<a href="#">Buy now</a>
5	<a href="#">7038257700</a> Cap, key	<a href="#">Buy now</a>
6	<a href="#">6K18253200</a> Cap	<a href="#">Buy now</a>
7	<a href="#">64D8258100</a> Stay, cord clamp	<a href="#">Buy now</a>
8	<a href="#">9730305012</a> Bolt, hexagon	<a href="#">Buy now</a>
9	<a href="#">9290305100</a> Ybs67-5 washer, spring	<a href="#">Buy now</a>
10	<a href="#">9530305700</a> Nut (656)	<a href="#">Buy now</a>
11	<a href="#">6888338311</a> Buzzer	<a href="#">Buy now</a>



## Switch & Panel 2 (Single)

NEW SWITCH PANEL (SINGLE : 1 & 2 STATION-MAIN)

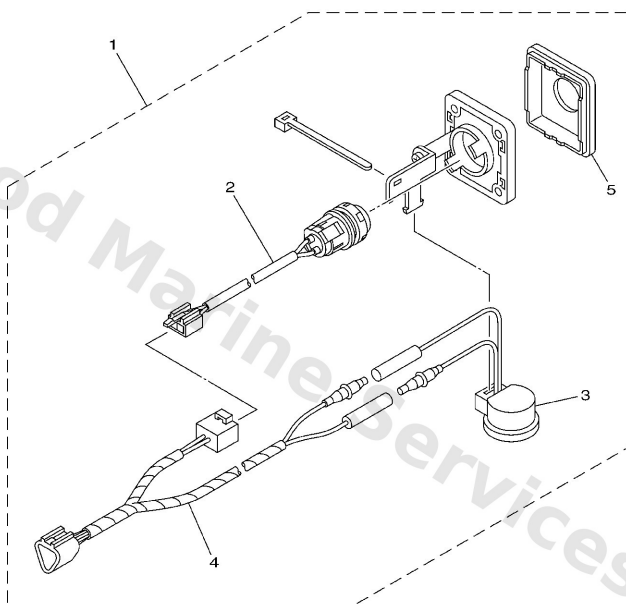


6X62100J1601

Ref	Part	
1	<a href="#">6X68257030</a> Switch panel dbw (single) & 2 STATION MAIN	<a href="#">Buy now</a>
2	<a href="#">6X68251000</a> Main switch assembly	<a href="#">Buy now</a>
3	<a href="#">6888257501</a> Engine stop switch assembly	<a href="#">Buy now</a>
4	<a href="#">6828255600</a> Lanyard, stop switch	<a href="#">Buy now</a>
5	<a href="#">70383383A0</a> Buzzer	<a href="#">Buy now</a>
6	<a href="#">6X68257100</a> Panel, switch	<a href="#">Buy now</a>

## Switch & Panel 3 (Single)

NEW SWITCH PANEL (SINGLE : 2 STATION-SUB)

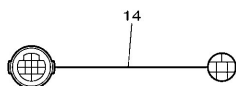
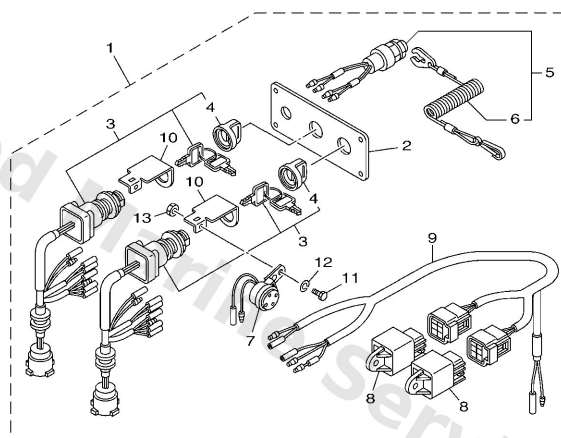


  
6X62100J1701

Ref	Part	
1	<a href="#">6X68257080</a> Panel switch assembly - 2nd stn STATION SUB	<a href="#">Buy now</a>
2	<a href="#">6X68259E20</a> Switch assembly	<a href="#">Buy now</a>
3	<a href="#">70383383A0</a> Buzzer	<a href="#">Buy now</a>
4	<a href="#">6X68271620</a> Cord switch	<a href="#">Buy now</a>
5	<a href="#">6X68257140</a> Panel, switch	<a href="#">Buy now</a>

## Switch & Panel 4 (Twin)

OLD SWITCH PANEL (TWIN : 1 & 2 STATION-MAIN)

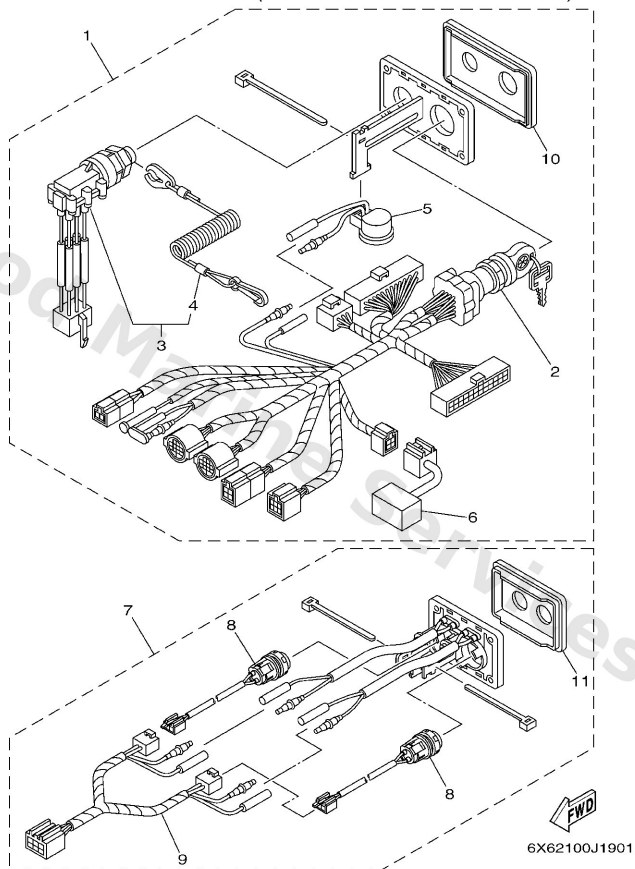


6X62100-J180

Ref	Part	
1	<a href="#">6Y88257002</a> Panel switch assembly & 2 STATION MAIN	<a href="#">Buy now</a>
2	<a href="#">6Y88257101</a> Plate, panel switch	<a href="#">Buy now</a>
3	<a href="#">6Y88251002</a> Main switch assembly	<a href="#">Buy now</a>
4	<a href="#">6768257700</a> Cap, key	<a href="#">Buy now</a>
5	<a href="#">6K18257500</a> Engine stop switch assembly	<a href="#">Buy now</a>
6	<a href="#">6828255600</a> Lanyard, stop switch	<a href="#">Buy now</a>
7	<a href="#">6R58338300</a> Buzzer	<a href="#">Buy now</a>
8	<a href="#">68V8195000</a> Relay assembly	<a href="#">Buy now</a>
9	<a href="#">6Y88250700</a> Lead, ignition switch relay	<a href="#">Buy now</a>
10	<a href="#">64D8258100</a> Stay, cord clamp	<a href="#">Buy now</a>
11	<a href="#">9730305012</a> Bolt, hexagon	<a href="#">Buy now</a>
12	<a href="#">9290305100</a> Ybs67-5 washer, spring	<a href="#">Buy now</a>
13	<a href="#">9530305700</a> Nut (656)	<a href="#">Buy now</a>
14	<a href="#">6X68258AL0</a> Extension, wire harness	<a href="#">Buy now</a>

## Switch & Panel 5 (Twin)

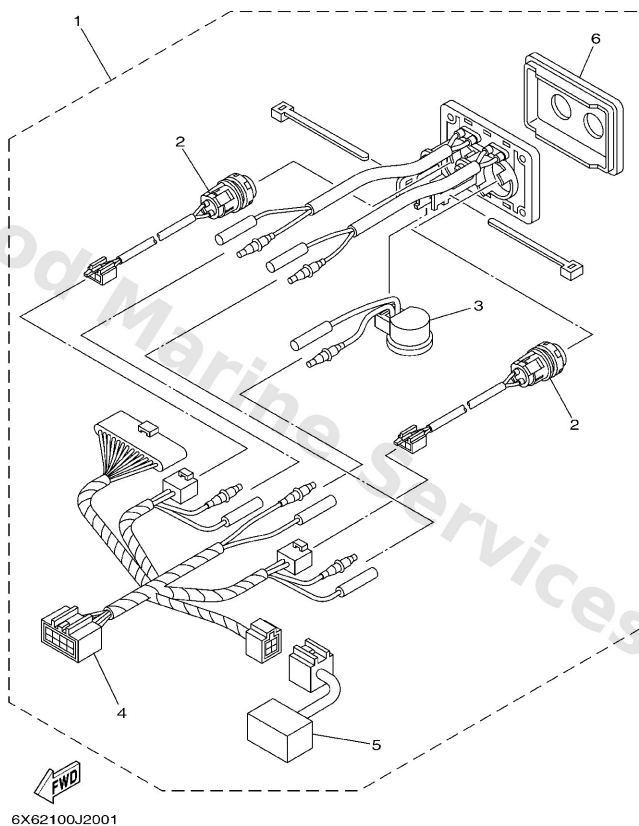
NEW SWITCH PANEL (TWIN : 1 & 2 STATION-MAIN)



Ref	Part	
1	<a href="#">6X68257040</a> Switch panel dbw (twin) & 2 STATION MAIN	<a href="#">Buy now</a>
2	<a href="#">6X68251010</a> Main switch assembly	<a href="#">Buy now</a>
3	<a href="#">6X68257510</a> Engine stop switch assembly	<a href="#">Buy now</a>
4	<a href="#">6828255600</a> Lanyard, stop switch	<a href="#">Buy now</a>
5	<a href="#">70383383A0</a> Buzzer	<a href="#">Buy now</a>
6	<a href="#">6X68198000</a> Diode assembly	<a href="#">Buy now</a>
7	<a href="#">6X68257060</a> - & 2 STATION MAIN	<a href="#">Buy now</a>
8	<a href="#">6X68259E20</a> Switch assembly	<a href="#">Buy now</a>
9	<a href="#">6X68271600</a> Cord switch	<a href="#">Buy now</a>
10	<a href="#">6X68257110</a> Panel, switch	<a href="#">Buy now</a>
11	<a href="#">6X68257120</a> Panel, switch	<a href="#">Buy now</a>

## Switch & Panel 6 (Twin)

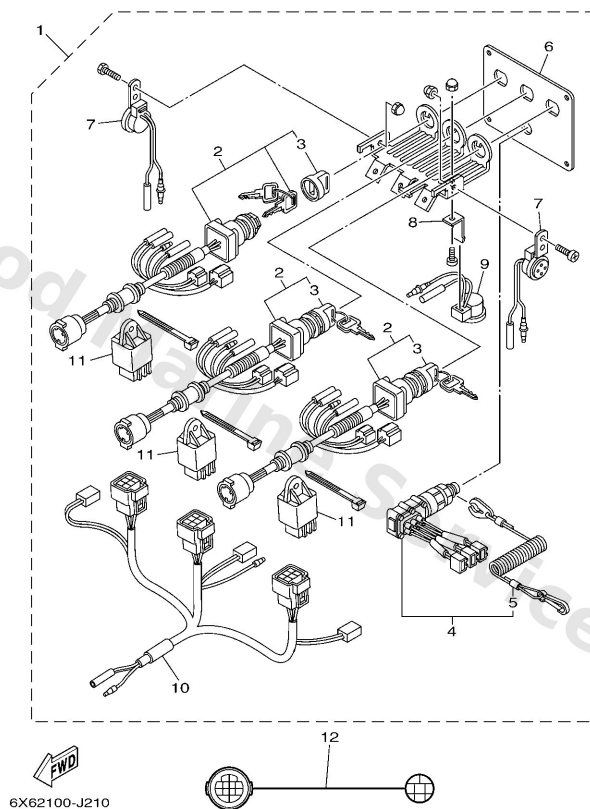
NEW SWITCH PANEL (TWIN : 2 STATION-SUB)



Ref	Part	
1	<a href="#">6X682570E0</a> Panel switch assembly <b>STATION SUB</b>	<a href="#">Buy now</a>
2	<a href="#">6X68259E20</a> Switch assembly	<a href="#">Buy now</a>
3	<a href="#">70383383A0</a> Buzzer	<a href="#">Buy now</a>
4	<a href="#">6X68271640</a> Cord switch	<a href="#">Buy now</a>
5	<a href="#">6X68198000</a> Diode assembly	<a href="#">Buy now</a>
6	<a href="#">6X68257120</a> Panel, switch	<a href="#">Buy now</a>

## Switch & Panel 7 (Triple)

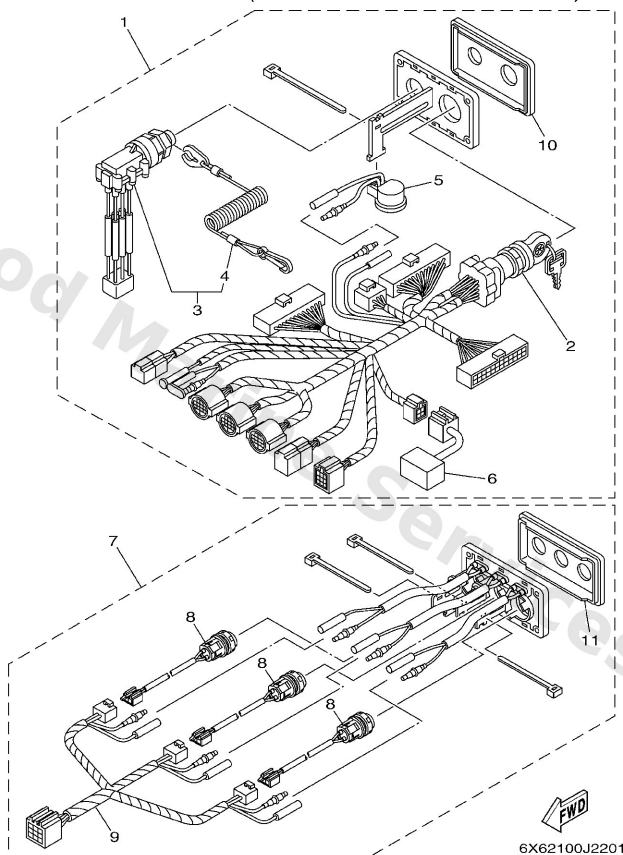
OLD SWITCH PANEL (TRIPLE : 1 & 2 STATION-MAIN)



Ref	Part	
1	<a href="#">6X58257001</a> Panel switch assembly & 2 STATION MAIN	<a href="#">Buy now</a>
2	<a href="#">6X58251001</a> Main switch assembly	<a href="#">Buy now</a>
3	<a href="#">6768257700</a> Cap, key	<a href="#">Buy now</a>
4	<a href="#">6X58257500</a> Engine stop switch assembly	<a href="#">Buy now</a>
5	<a href="#">6828255600</a> Lanyard, stop switch	<a href="#">Buy now</a>
6	<a href="#">6X58257100</a> Panel, switch	<a href="#">Buy now</a>
7	<a href="#">6X58338300</a> Buzzer	<a href="#">Buy now</a>
8	<a href="#">6X58258100</a> Stay, cord clamp	<a href="#">Buy now</a>
9	<a href="#">6X48338300</a> Buzzer	<a href="#">Buy now</a>
10	<a href="#">6X58250700</a> Wire, lead	<a href="#">Buy now</a>
11	<a href="#">68V8195000</a> Relay assembly	<a href="#">Buy now</a>
12	<a href="#">6X68258AL0</a> Extension, wire harness	<a href="#">Buy now</a>

## Switch & Panel 8 (Triple)

NEW SWITCH PANEL (TRIPLE :1 & 2 STATION-MAIN)

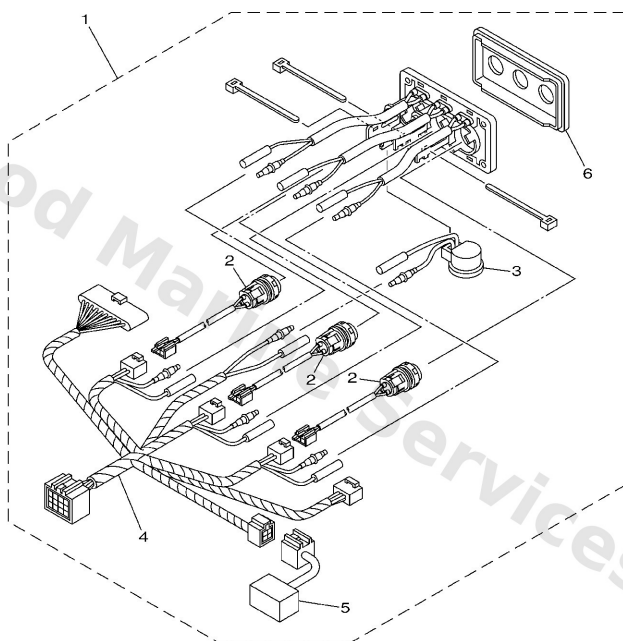


Ref	Part	
1	<a href="#">6X68257050</a> Panel Switch assembly & 2 STATION MAIN	<a href="#">Buy now</a>
2	<a href="#">6X68251020</a> Main switch assembly	<a href="#">Buy now</a>
3	<a href="#">6X68257510</a> Engine stop switch assembly	<a href="#">Buy now</a>
4	<a href="#">6828255600</a> Lanyard, stop switch	<a href="#">Buy now</a>
5	<a href="#">70383383A0</a> Buzzer	<a href="#">Buy now</a>
6	<a href="#">6X68198000</a> Diode assembly	<a href="#">Buy now</a>
7	<a href="#">6X68257070</a> - & 2 STATION MAIN	<a href="#">Buy now</a>
8	<a href="#">6X68259E20</a> Switch assembly	<a href="#">Buy now</a>
9	<a href="#">6X68271610</a> Cord switch	<a href="#">Buy now</a>
10	<a href="#">6X68257110</a> Panel, switch	<a href="#">Buy now</a>
11	<a href="#">6X68257130</a> Panel, switch	<a href="#">Buy now</a>



## Switch & Panel 9 (Triple)

NEW SWITCH PANEL (TRIPLE : 2 STATION-SUB)



6X62100J2301

Ref	Part	
1	<a href="#">6X682570F0</a> Panel switch assembly <b>STATION SUB</b>	<a href="#">Buy now</a>
2	<a href="#">6X68259E20</a> Switch assembly	<a href="#">Buy now</a>
3	<a href="#">70383383A0</a> Buzzer	<a href="#">Buy now</a>
4	<a href="#">6X68271650</a> Cord switch	<a href="#">Buy now</a>
5	<a href="#">6X68198000</a> Diode assembly	<a href="#">Buy now</a>
6	<a href="#">6X68257130</a> Panel, switch	<a href="#">Buy now</a>

# Disclaimer

This document is provided for convenience only. It is **not** an official Yamaha publication and is **not supplied, endorsed, or approved** by Yamaha Motor Co., Ltd.

Reasonable efforts are made to keep information accurate; however diagrams, part references, supersessions, descriptions, and applicability may contain errors or omissions. Specifications and part availability may change without notice.

You are responsible for confirming the correct parts for your engine (including model code, year, serial range, and any superseded part numbers) before ordering or fitting.