



# Yamaha E60HMHD 2003

## Parts Manual

[www.floodmarine.co.uk](http://www.floodmarine.co.uk)

+44 2882 246 539

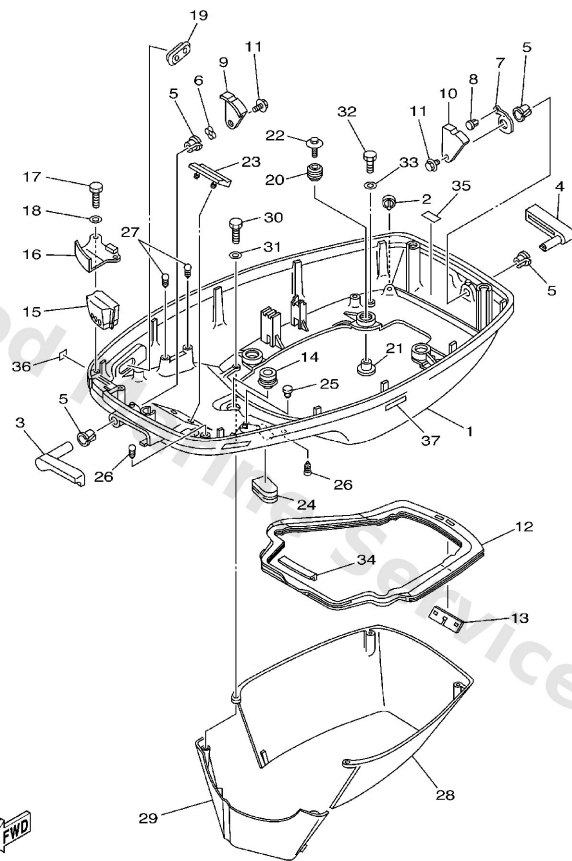
Authorised Yamaha Dealers



# Contents

<b>BOTTOM COWLING</b>	3
<b>BRACKET 1</b>	6
<b>BRACKET 2</b>	10
<b>CARBURETOR</b>	13
<b>CONTROL</b>	16
<b>CRANKSHAFT. PISTON</b>	19
<b>CYLINDER. CRANKCASE</b>	21
<b>ELECTRICAL</b>	24
<b>FUEL</b>	27
<b>FUEL TANK</b>	30
<b>GENERATOR</b>	31
<b>INTAKE</b>	33
<b>LOWER CASING. DRIVE 1</b>	35
<b>LOWER CASING. DRIVE 2</b>	41
<b>REPAIR KIT 1</b>	45
<b>REPAIR KIT 2</b>	48
<b>STARTER</b>	50
<b>STEERING</b>	54
<b>TOP COWLING</b>	58
<b>UPPER CASING</b>	60

## Bottom Cowling

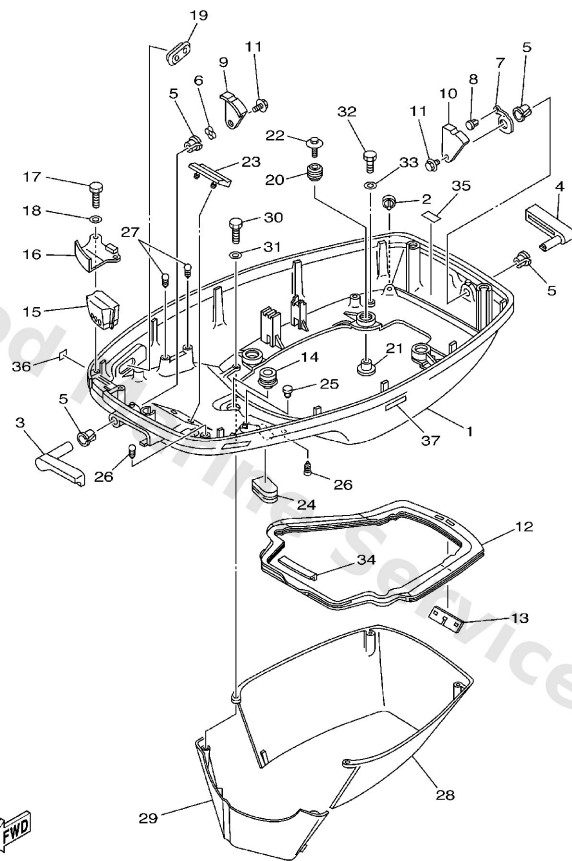


69D1300-2100

**C5**

Ref	Part	
1	<a href="#">6H3-42711-14-4D</a> Cowling, bottom 1	<a href="#">Buy now</a>
2	<a href="#">69D-44391-00</a> Nipple, hose	<a href="#">Buy now</a>
3	<a href="#">6H3-42815-01-4D</a> Lever, clamp	<a href="#">Buy now</a>
4	<a href="#">6H3-42817-01-4D</a> Lever, clamp	<a href="#">Buy now</a>
5	<a href="#">90386-13M38</a> Bushing (697)	<a href="#">Buy now</a>
6	<a href="#">90206-13M10</a> Washer, wave (6e5)	<a href="#">Buy now</a>
7	<a href="#">6H3-42813-00</a> Spring, clamp lever	<a href="#">Buy now</a>
8	<a href="#">90269-04M03</a> Rivet (6h3)	<a href="#">Buy now</a>
9	<a href="#">6H3-42816-00</a> Lever, clamp 2	<a href="#">Buy now</a>
10	<a href="#">6H3-42818-00</a> Lever, clamp 4	<a href="#">Buy now</a>
11	<a href="#">90119-06M09</a> Bolt, with washer	<a href="#">Buy now</a>
12	<a href="#">6H3-42716-02</a> Rubber, seal 1	<a href="#">Buy now</a>
13	<a href="#">6K5-42717-00</a> Rubber, seal 2	<a href="#">Buy now</a>
14	<a href="#">6E5-42724-00</a> Grommet	<a href="#">Buy now</a>
15	<a href="#">6K5-42725-00</a> Grommet	<a href="#">Buy now</a>

## Bottom Cowling

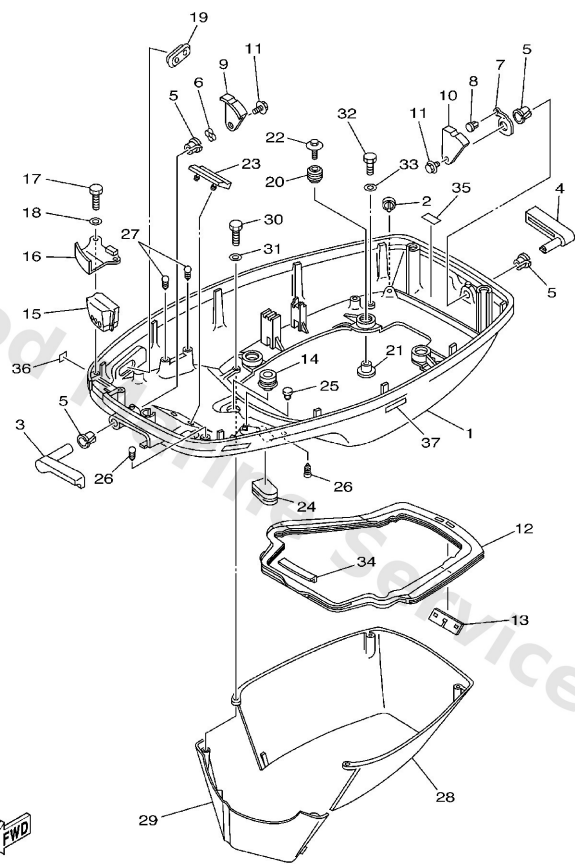


69D1300-2100

**C5**

Ref	Part	
16	<a href="#">6H3-42738-01-5B</a> Plate, fitting	<a href="#">Buy now</a>
17	<a href="#">97095-06016</a> Bolt, hexagon deep recess	<a href="#">Buy now</a>
18	<a href="#">92995-06600</a> Washer, plain (646)	<a href="#">Buy now</a>
19	<a href="#">6H3-42727-00</a> Grommet	<a href="#">Buy now</a>
20	<a href="#">90480-09M12</a> Grommet (6a0)	<a href="#">Buy now</a>
21	<a href="#">90387-06M69</a> Collar (688)	<a href="#">Buy now</a>
22	<a href="#">90119-06M61</a> Bolt, with washer	<a href="#">Buy now</a>
23	<a href="#">6H3-42768-00</a> Damper	<a href="#">Buy now</a>
24	<a href="#">6H4-42726-00</a> Grommet	<a href="#">Buy now</a>
25	<a href="#">703-82119-00</a> Cover, lead wire	<a href="#">Buy now</a>
26	<a href="#">90338-05M03</a> Plug (6h1)	<a href="#">Buy now</a>
28	<a href="#">6H3-42741-01-4D</a> Apron	<a href="#">Buy now</a>
29	<a href="#">6H3-42771-01-4D</a> Apron	<a href="#">Buy now</a>
30	<a href="#">97095-06025</a> Bolt	<a href="#">Buy now</a>
32	<a href="#">97095-06020</a> Bolt(7u8)	<a href="#">Buy now</a>

# Bottom Cowling

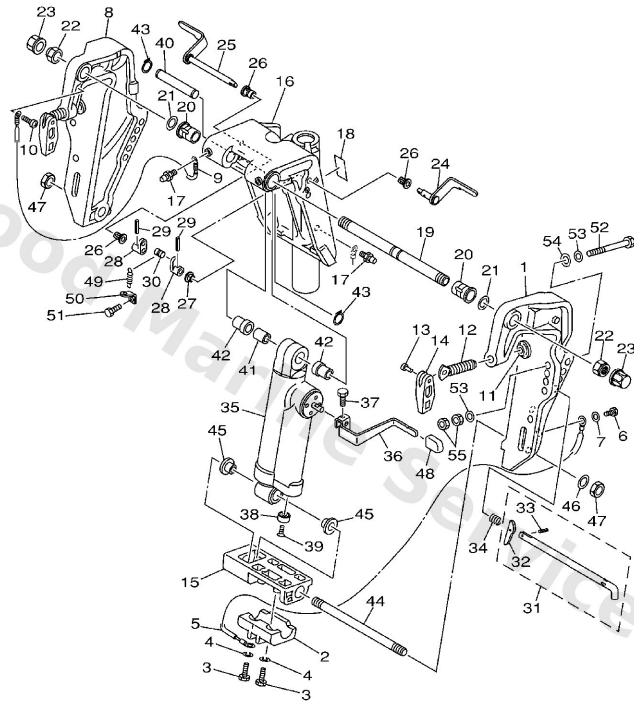


69D1300-2100

C5

Ref	Part	
34	<a href="#">6H3-42718-00</a> Rubber, seal 3	<a href="#">Buy now</a>
35	<a href="#">6G5-42791-10</a> Mark 1	<a href="#">Buy now</a>
36	<a href="#">6A1-28176-00</a> Label Caution	<a href="#">Buy now</a>
37	<a href="#">6E3-8257H-00</a> Plate Mark	<a href="#">Buy now</a>

# Bracket 1

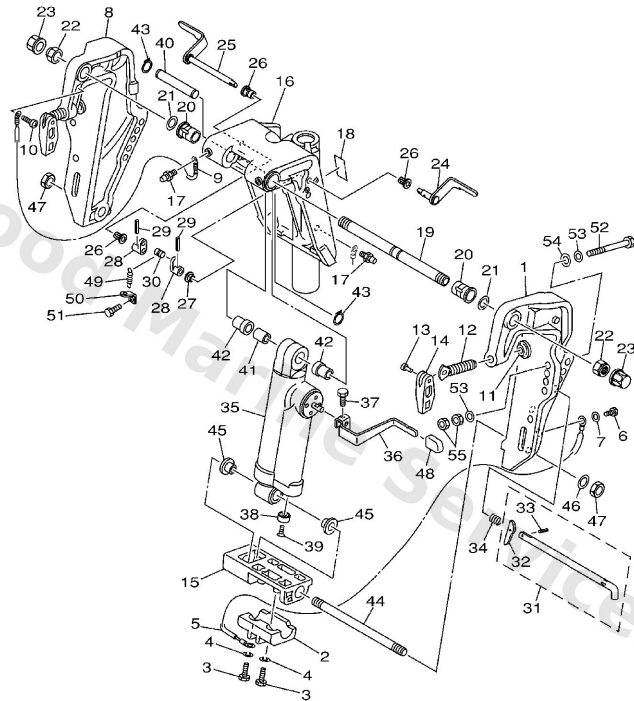


69D0100-1160

**D5**

Ref	Part	
1	<a href="#">63D-43111-01-4D</a> Bracket, clamp 1	<a href="#">Buy now</a>
2	<a href="#">63D-45251-00</a> Anode	<a href="#">Buy now</a>
3	<a href="#">97095-06025</a> Bolt	<a href="#">Buy now</a>
4	<a href="#">92995-06100</a> Washer(6a1)	<a href="#">Buy now</a>
5	<a href="#">6H1-82148-00</a> Wire, lead	<a href="#">Buy now</a>
6	<a href="#">97095-06010</a> Bolt	<a href="#">Buy now</a>
7	<a href="#">92995-06600</a> Washer, plain (646)	<a href="#">Buy now</a>
8	<a href="#">63D-43112-01-4D</a> Bracket, clamp 2	<a href="#">Buy now</a>
9	<a href="#">63D-82148-00</a> Wire, lead 5	<a href="#">Buy now</a>
10	<a href="#">97885-06008</a> Screw, pan head(6a3)	<a href="#">Buy now</a>
11	<a href="#">648-43114-01</a> Pad, transom clamp	<a href="#">Buy now</a>
12	<a href="#">663-43116-01</a> Screw, transom	<a href="#">Buy now</a>
13	<a href="#">90243-04007</a> Pin (663)	<a href="#">Buy now</a>
14	<a href="#">663-43118-01-4D</a> Handle, transom clamp	<a href="#">Buy now</a>
15	<a href="#">63D-43128-01-4D</a> Spacer, clamp bracket	<a href="#">Buy now</a>

# Bracket 1

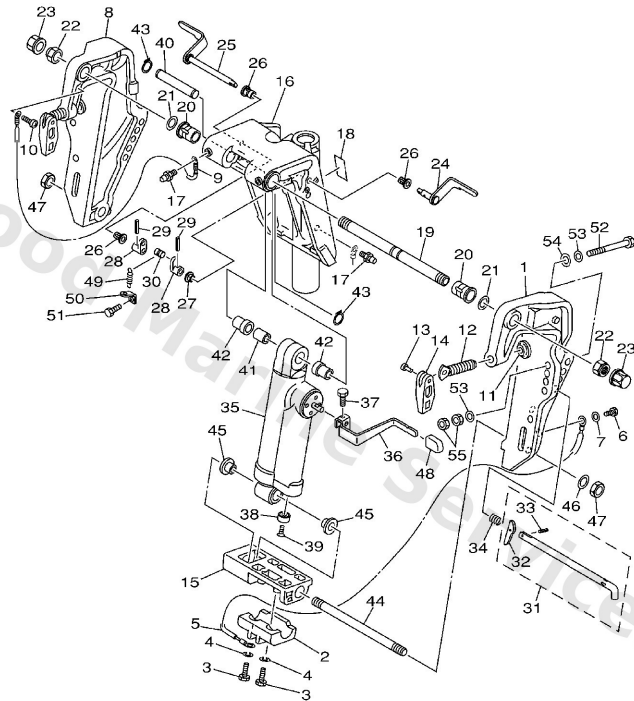


69D0100-1160

**D5**

Ref	Part	
16	<a href="#">69D-43311-11-4D</a> Bracket, swivel 1	<a href="#">Buy now</a>
17	<a href="#">93700-06M03</a> Nipple, grease(6a1)	<a href="#">Buy now</a>
18	<a href="#">63D-43691-00</a> Indicator, tilt	<a href="#">Buy now</a>
19	<a href="#">63D-43131-01</a> Bolt, clamp bracket	<a href="#">Buy now</a>
20	<a href="#">90386-22M15</a> Bushing (688)	<a href="#">Buy now</a>
21	<a href="#">90201-22M03</a> Washer, plate(64j)	<a href="#">Buy now</a>
22	<a href="#">90185-22M11</a> Nut, self-locking	<a href="#">Buy now</a>
23	<a href="#">6G5-43145-01</a> Cap, clamp bracket	<a href="#">Buy now</a>
24	<a href="#">6H5-43181-03</a> Lever, tilt stop 1	<a href="#">Buy now</a>
25	<a href="#">6H5-43185-03</a> Lever, tilt stop 2	<a href="#">Buy now</a>
26	<a href="#">90386-10M16</a> Bushing (688)	<a href="#">Buy now</a>
27	<a href="#">90386-10025</a> Bushing (658)	<a href="#">Buy now</a>
28	<a href="#">6G5-43148-00</a> Collar, distance	<a href="#">Buy now</a>
29	<a href="#">91690-30020</a> Pin, spring (6h4)	<a href="#">Buy now</a>
30	<a href="#">90249-06M19</a> Pin(6e5)	<a href="#">Buy now</a>

# Bracket 1

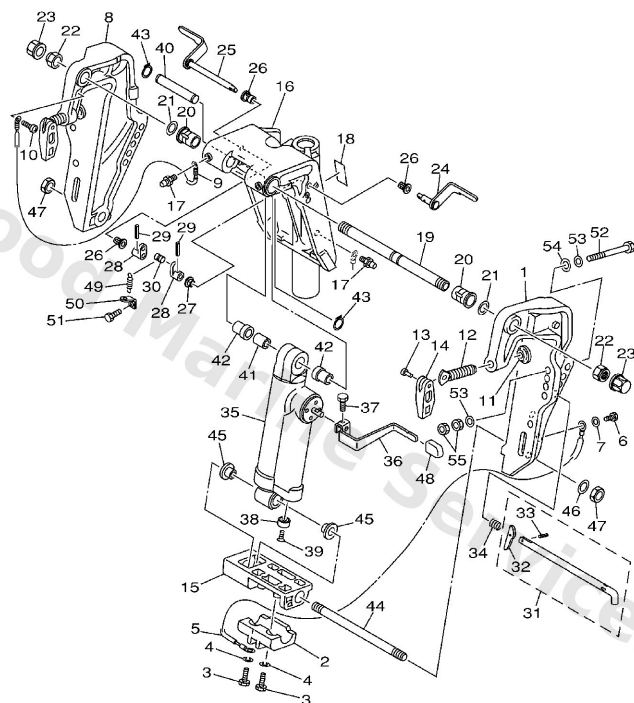


FWD  
69D0100-1160

**D5**

Ref	Part	
31	<a href="#">688-43160-01</a> Tilt rod ass'y	<a href="#">Buy now</a>
32	<a href="#">688-43165-00</a> Stopper, tilt rod	<a href="#">Buy now</a>
33	<a href="#">91690-30012</a> Pin, spring	<a href="#">Buy now</a>
34	<a href="#">90502-16M02</a> Spring, conical (688)	<a href="#">Buy now</a>
35	<a href="#">69D-43170-10-4D</a> Shock absorber sub-assembly	<a href="#">Buy now</a>
36	<a href="#">69D-43631-00</a> Lever, tilt	<a href="#">Buy now</a>
38	<a href="#">663-45251-00</a> Anode	<a href="#">Buy now</a>
39	<a href="#">98680-06525</a> Screw flat head	<a href="#">Buy now</a>
40	<a href="#">69D-43126-00</a> Pin, upper shock mount	<a href="#">Buy now</a>
41	<a href="#">90387-16003</a> Collar	<a href="#">Buy now</a>
42	<a href="#">90387-16004</a> Collar	<a href="#">Buy now</a>
43	<a href="#">93410-16006</a> Circlip	<a href="#">Buy now</a>
44	<a href="#">90116-18M52</a> Bolt, stud(62x)	<a href="#">Buy now</a>
45	<a href="#">90386-18M44</a> Bushing (6g5)	<a href="#">Buy now</a>
46	<a href="#">92995-18600</a> Washer(64j)	<a href="#">Buy now</a>

# Bracket 1

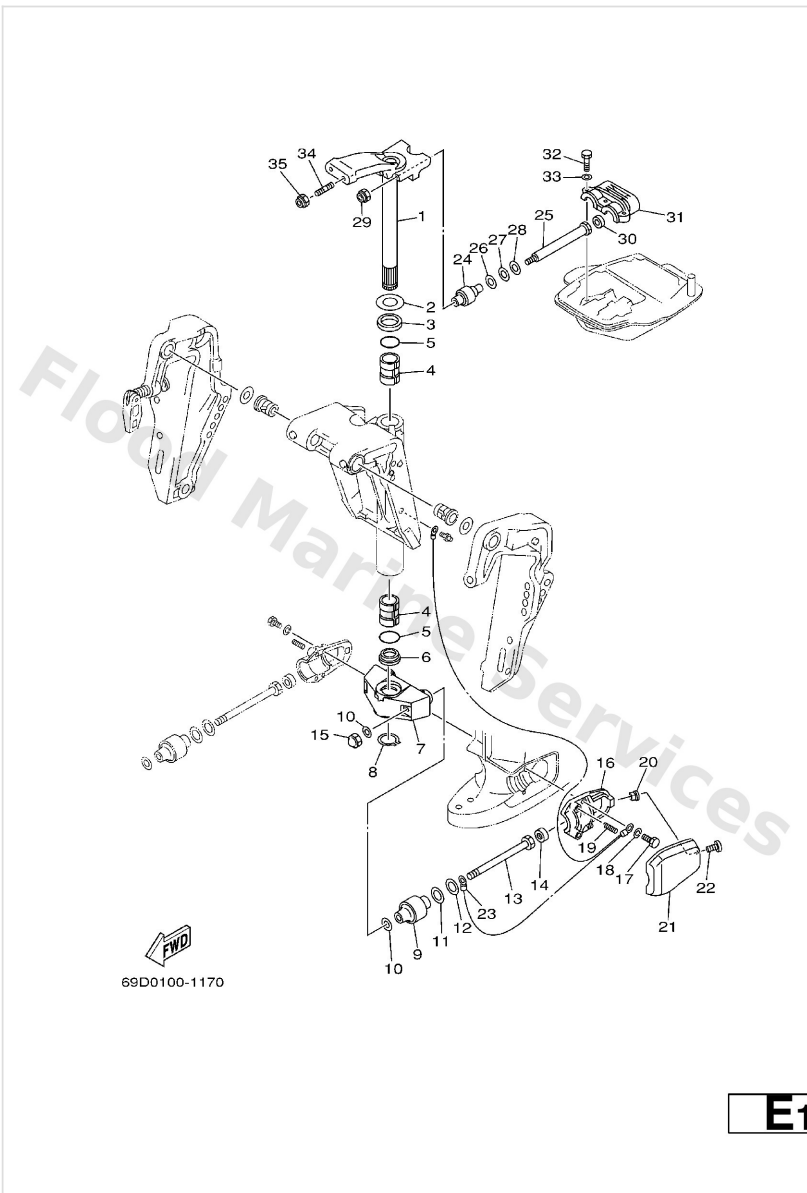


69D0100-1160

**D5**

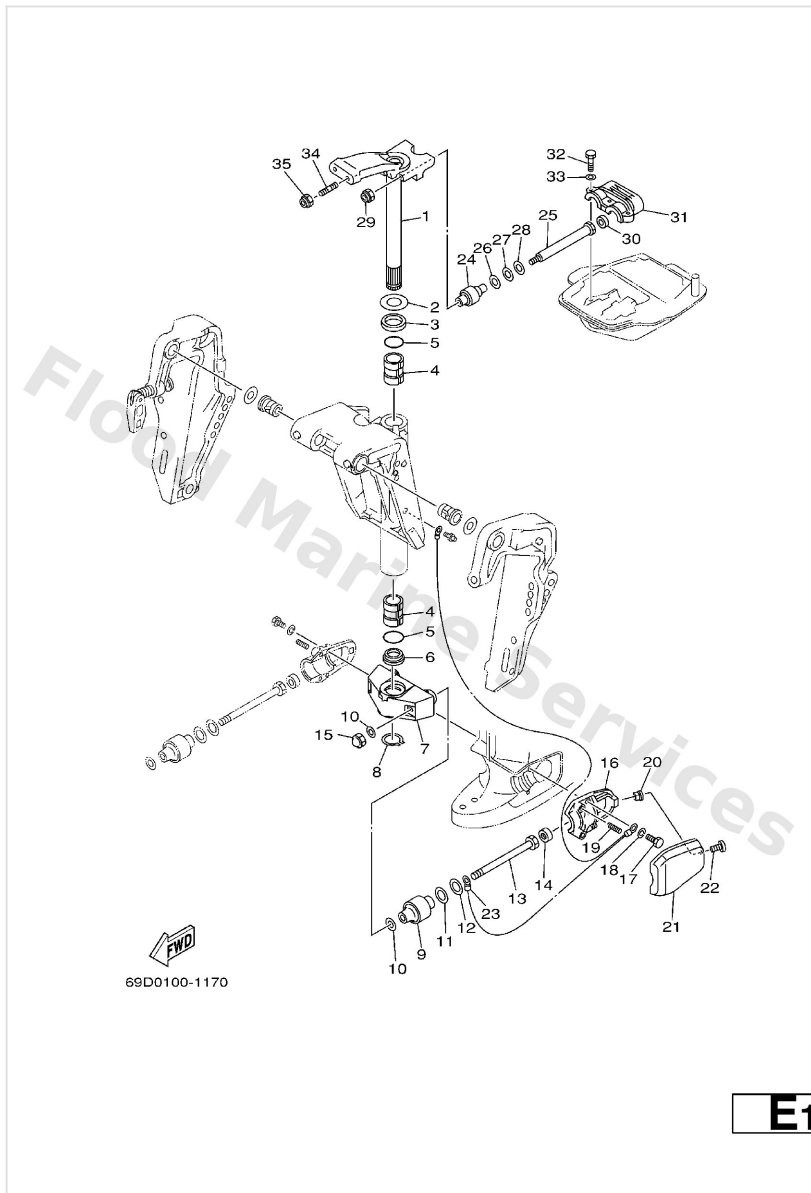
Ref	Part	
47	<a href="#">90170-18M10</a> Nut (6h5)	<a href="#">Buy now</a>
48	<a href="#">682-43318-01</a> Cover	<a href="#">Buy now</a>
49	<a href="#">90506-14M24</a> Spring, tension(6e5)	<a href="#">Buy now</a>
50	<a href="#">6G5-43144-00</a> Hook, spring	<a href="#">Buy now</a>
52	<a href="#">90101-12M65</a> Bolt	<a href="#">Buy now</a>
53	<a href="#">92995-12200</a> Ybs66-12 washer,plain	<a href="#">Buy now</a>
54	<a href="#">90201-12426</a> Washe, plate(663)	<a href="#">Buy now</a>
55	<a href="#">95380-12600</a> Nut (707)	<a href="#">Buy now</a>

## Bracket 2



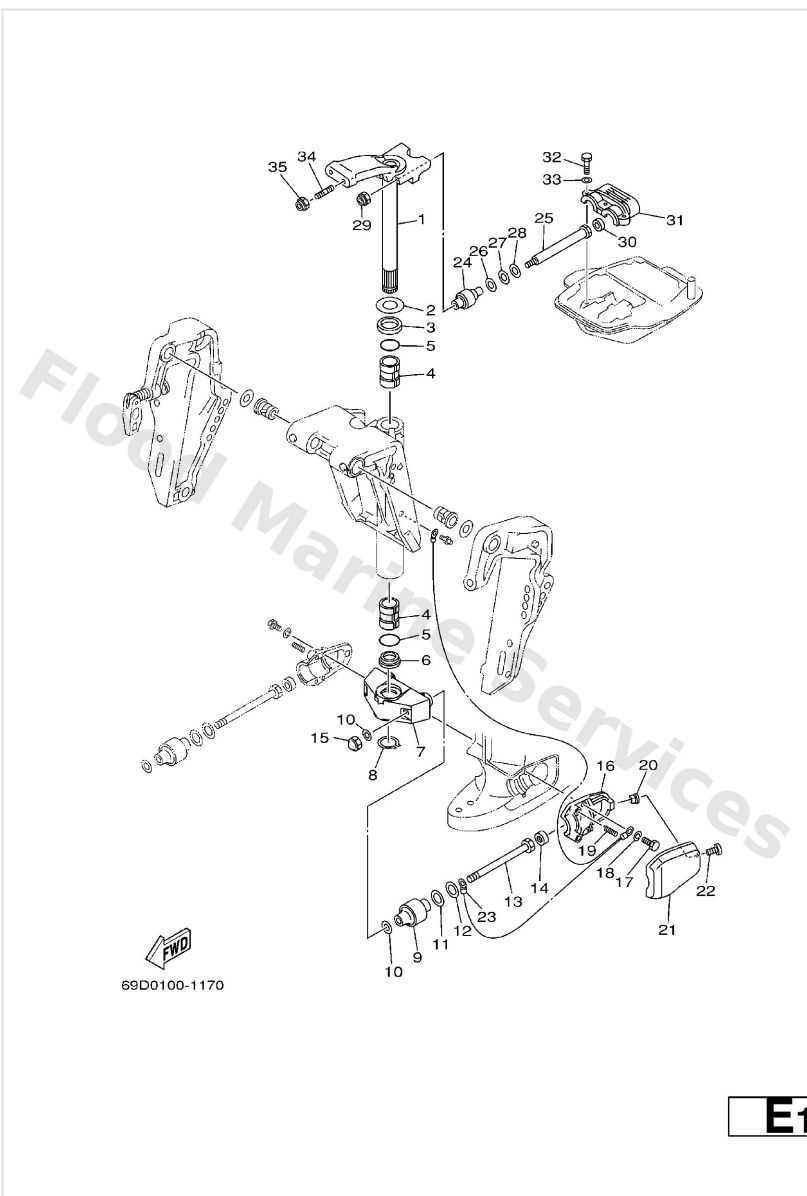
Ref	Part	
1	<a href="#">69D-42510-10-4D</a> Steering Bracket assembly	<a href="#">Buy now</a>
2	<a href="#">90201-30M00</a> Washer, plate(6h1)	<a href="#">Buy now</a>
3	<a href="#">90386-30M78</a> Bush(6h0)	<a href="#">Buy now</a>
4	<a href="#">90386-30M77</a> Bush(6h0)	<a href="#">Buy now</a>
5	<a href="#">93210-29M94</a> O-ring(6h1)	<a href="#">Buy now</a>
6	<a href="#">90386-30M60</a> Bush(6j8)	<a href="#">Buy now</a>
7	<a href="#">69D-44551-10-4D</a> Housing, lower mount rubber 1	<a href="#">Buy now</a>
8	<a href="#">93410-28M06</a> Circlip (688)	<a href="#">Buy now</a>
9	<a href="#">687-44555-00-94</a> Mount damper, lower side	<a href="#">Buy now</a>
10	<a href="#">90201-12M16</a> Washer, plate (679)	<a href="#">Buy now</a>
11	<a href="#">90202-25M04</a> Washer, plate (663)	<a href="#">Buy now</a>
12	<a href="#">90201-13M19</a> Washer, plate (663)	<a href="#">Buy now</a>
13	<a href="#">90109-12M21</a> Bolt (6h3)	<a href="#">Buy now</a>
14	<a href="#">663-44575-00</a> Damper, lower mount rubber	<a href="#">Buy now</a>
15	<a href="#">95380-12800</a> Nut crown(663)	<a href="#">Buy now</a>

## Bracket 2



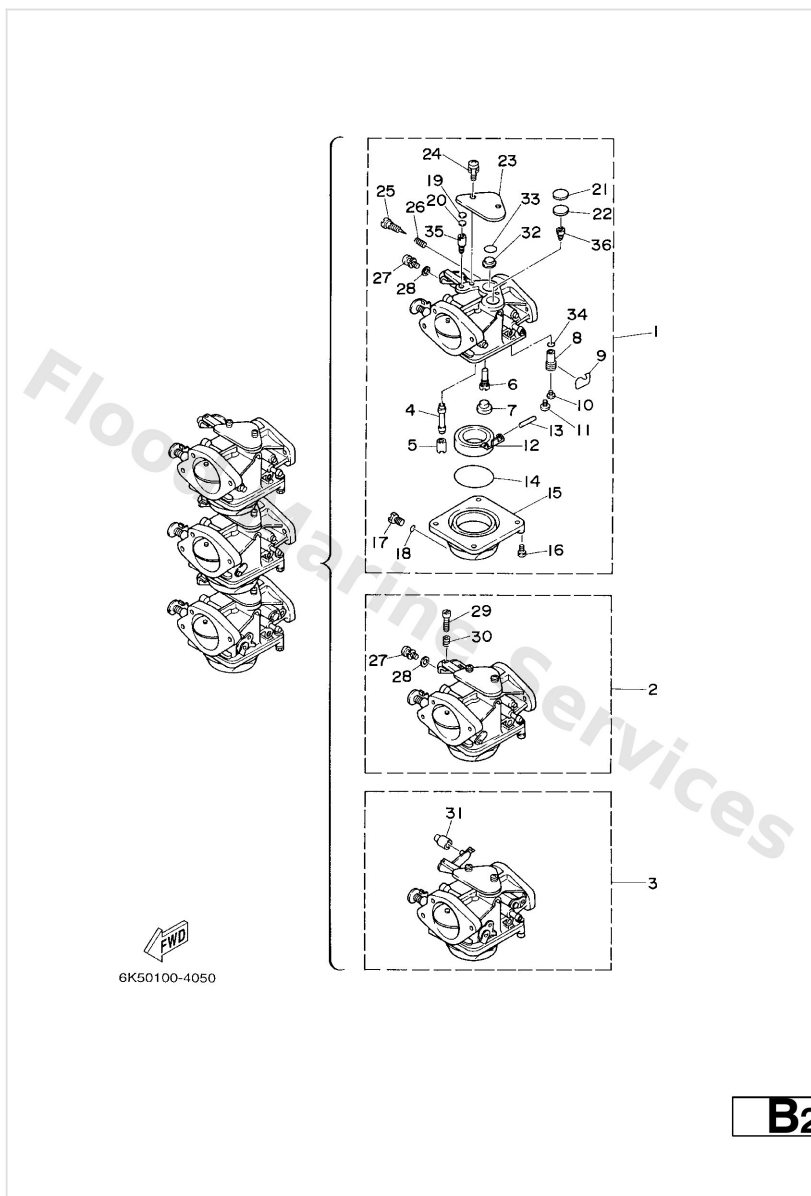
Ref	Part	
16	<a href="#">6H3-44552-03-94</a> Housing, lower mount rubber	<a href="#">Buy now</a>
17	<a href="#">97075-08025</a> Bolt, hexagon deep recess	<a href="#">Buy now</a>
18	<a href="#">92995-08100</a> Ybs67-8 washer, spring	<a href="#">Buy now</a>
19	<a href="#">90501-14M08</a> Spring, compression(64j)	<a href="#">Buy now</a>
20	<a href="#">90179-06066</a> Nut(663)	<a href="#">Buy now</a>
21	<a href="#">6H3-44553-01-4D</a> Cover, lower mount	<a href="#">Buy now</a>
22	<a href="#">97885-06016</a> Screw, pan head(6b0)	<a href="#">Buy now</a>
23	<a href="#">688-82127-02</a> Wire, lead 2	<a href="#">Buy now</a>
24	<a href="#">688-44514-00-94</a> Mount damper, upper side	<a href="#">Buy now</a>
25	<a href="#">90101-10M49</a> Bolt	<a href="#">Buy now</a>
26	<a href="#">90201-20M21</a> Washer, plate (688)	<a href="#">Buy now</a>
27	<a href="#">90202-20M06</a> Washer, plate (688)	<a href="#">Buy now</a>
28	<a href="#">90201-11M22</a> Washer, plate (688)	<a href="#">Buy now</a>
29	<a href="#">90185-10051</a> Nut, self-locking	<a href="#">Buy now</a>
31	<a href="#">688-44511-00-94</a> Cover, upper mount	<a href="#">Buy now</a>

## Bracket 2



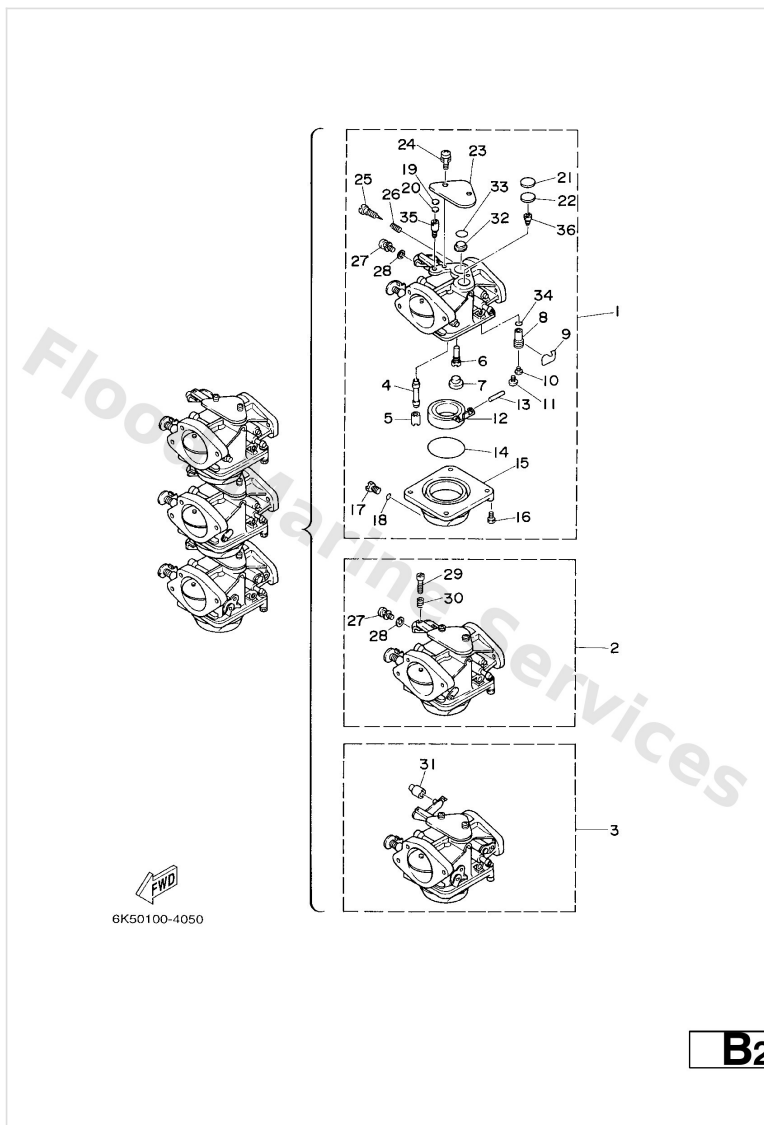
Ref	Part	
32	<a href="#">97075-08035</a> Bolt(70w)	<a href="#">Buy now</a>
34	<a href="#">90116-10M28</a> Bolt, stud	<a href="#">Buy now</a>

# Carburetor



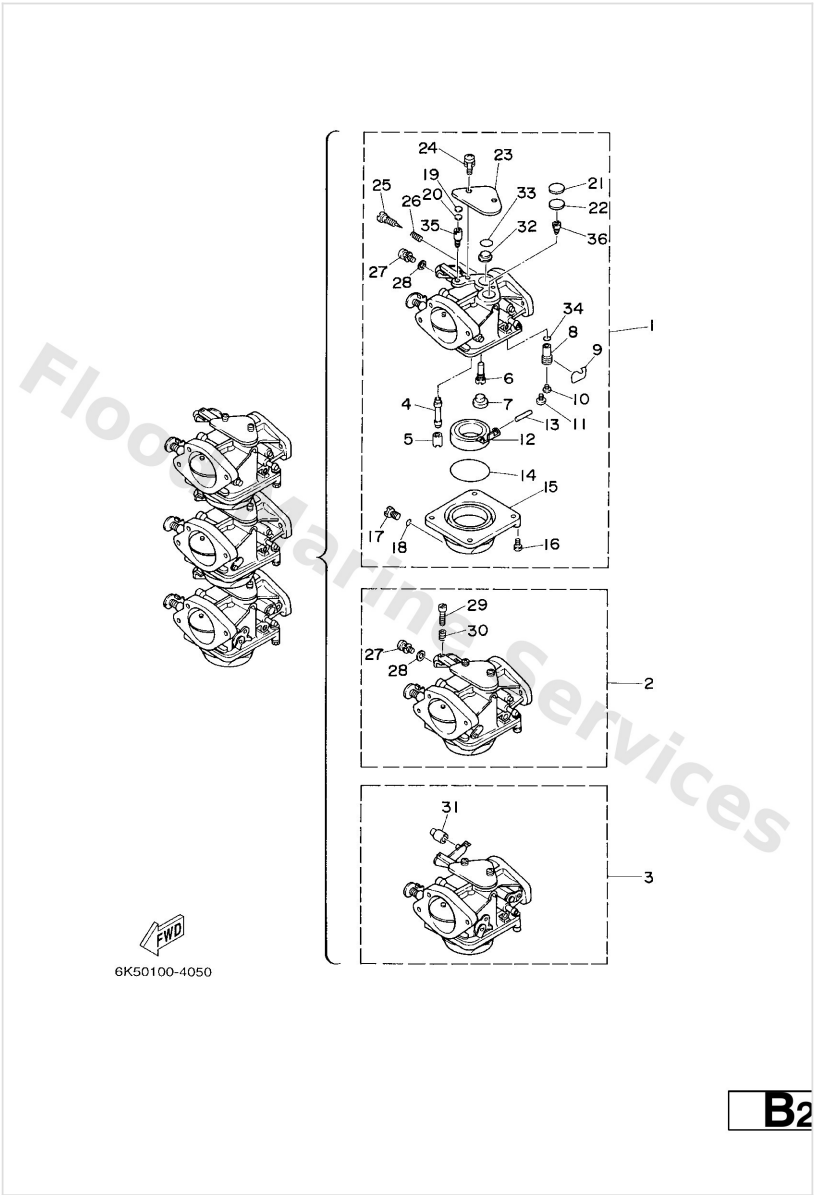
Ref	Part	
1	<a href="#">6K5-14301-03</a> Carburetor assembly 1	<a href="#">Buy now</a>
2	<a href="#">6K5-14302-03</a> Carburetor assembly 2	<a href="#">Buy now</a>
3	<a href="#">6K5-14303-03</a> Carburetor assembly 3	<a href="#">Buy now</a>
4	<a href="#">6H2-14947-02</a> Nozzle, main	<a href="#">Buy now</a>
5	<a href="#">676-14943-34</a> Jet, main (#135)	<a href="#">Buy now</a>
6	<a href="#">6H4-14948-15</a> Jet, sl0w (#70)	<a href="#">Buy now</a>
7	<a href="#">676-14966-00</a> Rubber cap	<a href="#">Buy now</a>
8	<a href="#">6H3-14590-01</a> Needle valve assembly	<a href="#">Buy now</a>
9	<a href="#">663-14159-00</a> Clip	<a href="#">Buy now</a>
10	<a href="#">676-14186-00</a> Pin, valve	<a href="#">Buy now</a>
11	<a href="#">98580-04008</a> Screw, pan head (713)	<a href="#">Buy now</a>
12	<a href="#">6G1-14985-00</a> Float comp.	<a href="#">Buy now</a>
13	<a href="#">688-14548-00</a> Pin, arm	<a href="#">Buy now</a>
14	<a href="#">6G1-14984-00</a> Gasket, float chamber	<a href="#">Buy now</a>
15	<a href="#">6H2-14980-00</a> Body, float chamber	<a href="#">Buy now</a>

# Carburetor



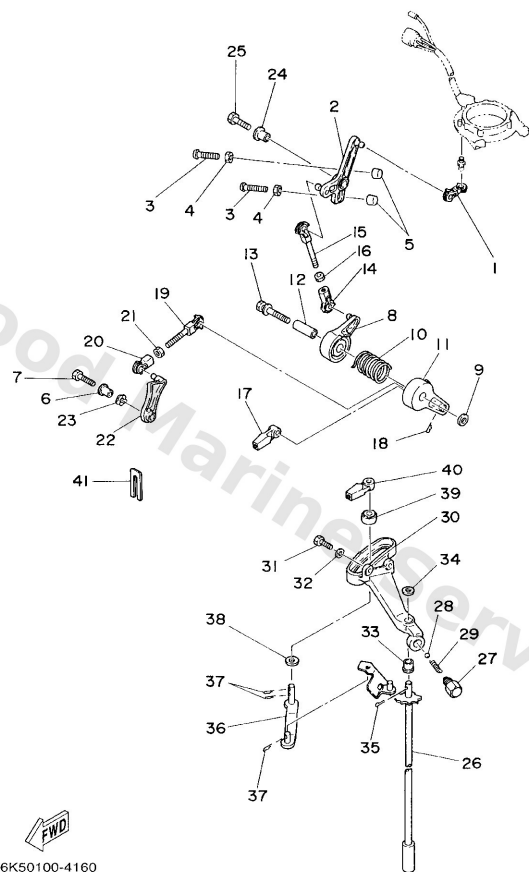
Ref	Part	
16	<a href="#">97980-04114</a> Screw, pan head(ga5)	<a href="#">Buy now</a>
17	<a href="#">6H3-14992-00</a> Screw, drain	<a href="#">Buy now</a>
18	<a href="#">93210-04230</a> O-ring (371)	<a href="#">Buy now</a>
19	<a href="#">663-14126-00</a> Packing	<a href="#">Buy now</a>
20	<a href="#">663-14527-00</a> Plate	<a href="#">Buy now</a>
21	<a href="#">688-14126-00</a> Packing	<a href="#">Buy now</a>
22	<a href="#">688-14527-00</a> Plate	<a href="#">Buy now</a>
23	<a href="#">6H2-14527-01</a> Plate	<a href="#">Buy now</a>
24	<a href="#">97980-05310</a> Screw, with washer(6k5)	<a href="#">Buy now</a>
25	<a href="#">692-14923-00</a> Screw, adjusting	<a href="#">Buy now</a>
26	<a href="#">679-14555-00</a> Spring	<a href="#">Buy now</a>
27	<a href="#">6K5-14592-00</a> Screw #1,2	<a href="#">Buy now</a>
28	<a href="#">90201-05652</a> Washer, plate(65j) #1,2	<a href="#">Buy now</a>
29	<a href="#">63V-14523-00</a> Screw, stop #2	<a href="#">Buy now</a>
30	<a href="#">90501-10326</a> Spring coil(663)(carb) #2	<a href="#">Buy now</a>

# Carburetor



Ref	Part	
31	<a href="#">6H2-14578-00</a> Collar #3	<a href="#">Buy now</a>
32	<a href="#">6H3-14578-00</a> Collar	<a href="#">Buy now</a>
33	<a href="#">93210-15M52</a> O-ring (6e9)	<a href="#">Buy now</a>
34	<a href="#">93210-04228</a> O-ring (371)	<a href="#">Buy now</a>
35	<a href="#">6K5-14945-36</a> Jet, air main (#145)	<a href="#">Buy now</a>
36	<a href="#">6K5-14950-21</a> Jet, air slow (#85)	<a href="#">Buy now</a>

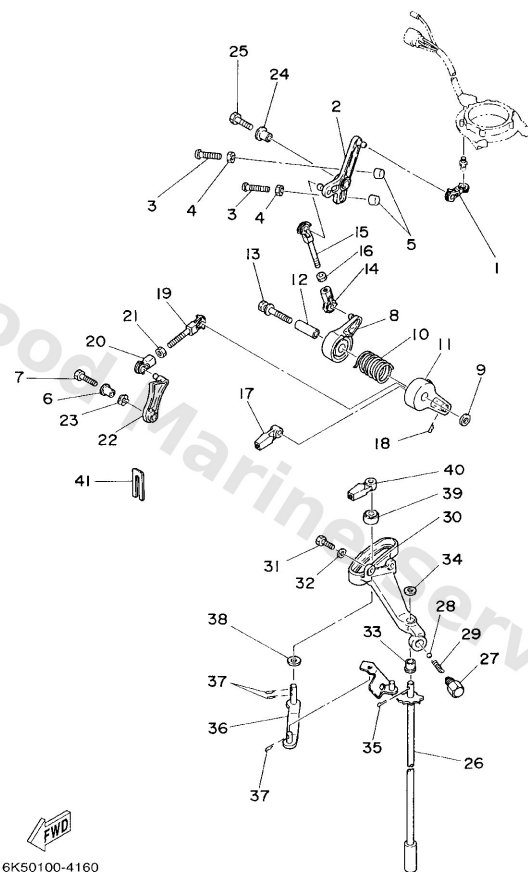
# Control



**D3**

Ref	Part	
1	<a href="#">6H3-41238-00</a> Joint, link 1	<a href="#">Buy now</a>
2	<a href="#">6H3-41631-00</a> Lever, magneto control 1	<a href="#">Buy now</a>
3	<a href="#">90157-06M13</a> Screw, pan head(6h4)	<a href="#">Buy now</a>
4	<a href="#">95380-06600</a> Nut(661)	<a href="#">Buy now</a>
5	<a href="#">688-44194-00</a> Cap	<a href="#">Buy now</a>
6	<a href="#">90387-06M60</a> Collar (6h3)	<a href="#">Buy now</a>
7	<a href="#">97095-06025</a> Bolt	<a href="#">Buy now</a>
8	<a href="#">6H3-41632-00</a> Lever, magneto control 2	<a href="#">Buy now</a>
9	<a href="#">90201-06M31</a> Washer (6a0)	<a href="#">Buy now</a>
10	<a href="#">90508-29M19</a> Spring, torsion	<a href="#">Buy now</a>
11	<a href="#">6H3-41633-00</a> Lever, magneto control 3	<a href="#">Buy now</a>
12	<a href="#">90387-06M59</a> Collar (6h3)	<a href="#">Buy now</a>
13	<a href="#">90119-06M91</a> Bolt, with washer	<a href="#">Buy now</a>
14	<a href="#">662-41237-01</a> Joint, link	<a href="#">Buy now</a>
15	<a href="#">679-41636-00</a> Rod, magneto control	<a href="#">Buy now</a>

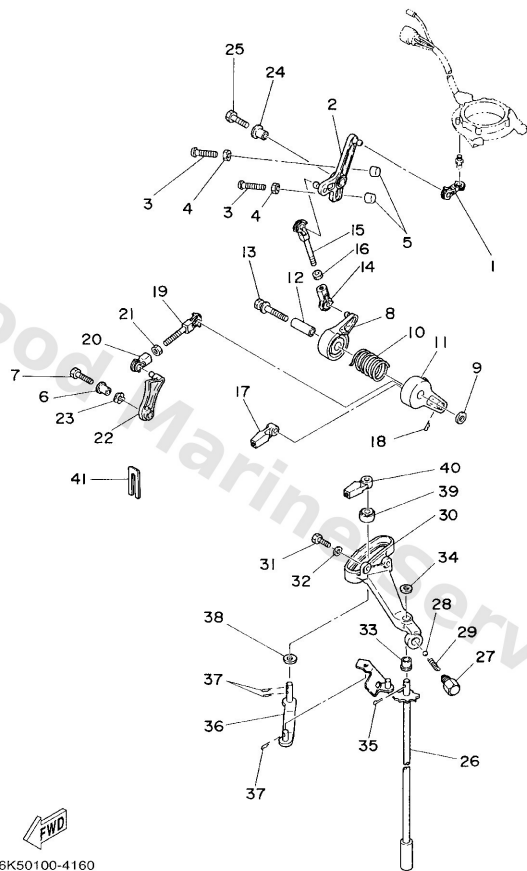
# Control



**D3**

Ref	Part	
16	<a href="#">95380-05600</a> Nut, hexagon (663)	<a href="#">Buy now</a>
17	<a href="#">663-48344-00</a> Cable end, remote control	<a href="#">Buy now</a>
18	<a href="#">90468-18008</a> Clip 620436610000	<a href="#">Buy now</a>
19	<a href="#">682-41237-50</a> Joint, link 2	<a href="#">Buy now</a>
22	<a href="#">6H3-41213-01</a> Cam, accele	<a href="#">Buy now</a>
23	<a href="#">90206-10M04</a> Washer, wave (676)	<a href="#">Buy now</a>
26	<a href="#">6K5-44120-11</a> Handle gear shift assembly	<a href="#">Buy now</a>
27	<a href="#">648-42715-00</a> Bushing 2	<a href="#">Buy now</a>
28	<a href="#">93501-04M02</a> Ball (697)	<a href="#">Buy now</a>
29	<a href="#">90501-12082</a> Spring 6484411600	<a href="#">Buy now</a>
30	<a href="#">6H3-44117-00-94</a> Bracket 1	<a href="#">Buy now</a>
31	<a href="#">97013-06020</a> Bolt(62y)	<a href="#">Buy now</a>
32	<a href="#">92903-06600</a> Washer, plain (646)	<a href="#">Buy now</a>
33	<a href="#">90386-07M58</a> Bush(6h1)	<a href="#">Buy now</a>
34	<a href="#">92990-08200</a> Ybs66-8 washer, plain	<a href="#">Buy now</a>

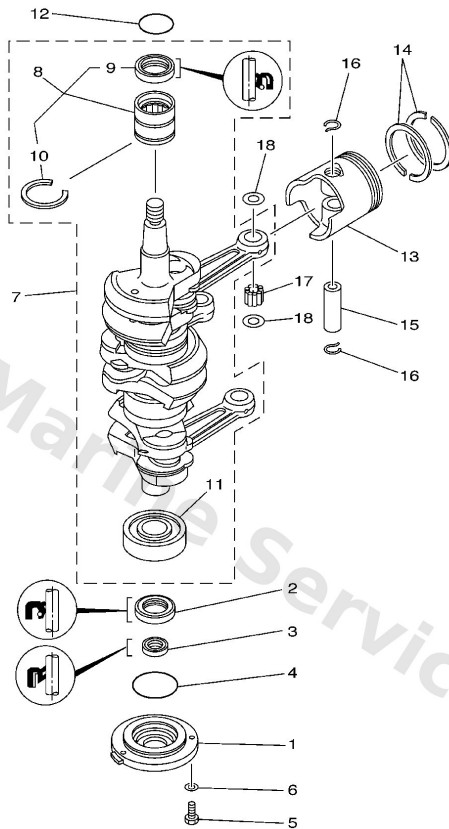
# Control



**D3**

Ref	Part	
35	<a href="#">91490-20012</a> Pin, cotter (648)	<a href="#">Buy now</a>
36	<a href="#">6H3-44121-01</a> Lever, shift rod	<a href="#">Buy now</a>
38	<a href="#">90202-07M07</a> Washer, plate (688)	<a href="#">Buy now</a>
39	<a href="#">688-44122-00</a> Bushing, shift rod lever	<a href="#">Buy now</a>
41	<a href="#">6H3-48538-00</a> Clamp, cable	<a href="#">Buy now</a>

# Crankshaft. Piston

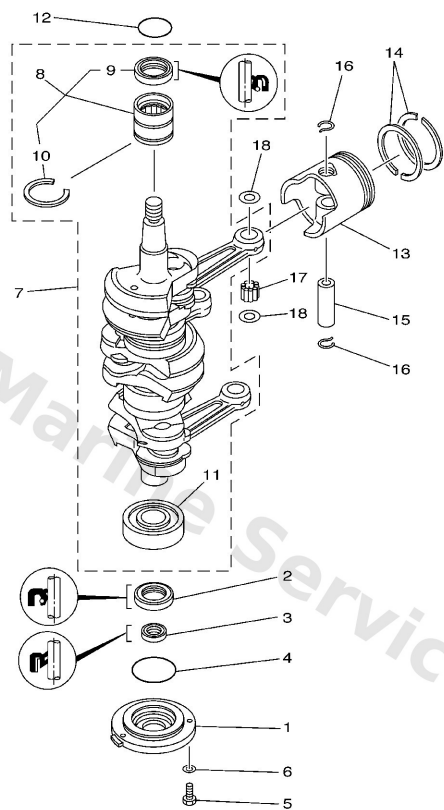


FWD  
6H20010-0030

A7

Ref	Part	
1	<a href="#">6H3-15359-00-94</a> Housing, oil seal	<a href="#">Buy now</a>
2	<a href="#">93102-30M23</a> Oil seal (6h3)	<a href="#">Buy now</a>
3	<a href="#">93106-18M01</a> Oil seal (6h3)	<a href="#">Buy now</a>
4	<a href="#">93210-65M50</a> O-ring	<a href="#">Buy now</a>
5	<a href="#">97095-06020</a> Bolt(7u8)	<a href="#">Buy now</a>
6	<a href="#">92995-06600</a> Washer, plain (646)	<a href="#">Buy now</a>
7	<a href="#">69D-11400-00</a> Crankshaft assembly	<a href="#">Buy now</a>
8	<a href="#">93311-636U6</a> Bearing, needle (6h3)	<a href="#">Buy now</a>
9	<a href="#">93102-36M24</a> Oil seal(52w)	<a href="#">Buy now</a>
10	<a href="#">93440-49M04</a> Circlip (6h3)	<a href="#">Buy now</a>
11	<a href="#">93306-306V1</a> Bearing(6h2)	<a href="#">Buy now</a>
12	<a href="#">93210-46M16</a> O-ring (688)	<a href="#">Buy now</a>
13	<a href="#">6K5-11631-03-95</a> Piston (std)	<a href="#">Buy now</a>
13	<a href="#">6K5-11635-03</a> Piston (0.25mm o/s) AP	<a href="#">Buy now</a>
13	<a href="#">6K5-11636-03</a> Piston (0.50mm o/s) AP	<a href="#">Buy now</a>

# Crankshaft. Piston

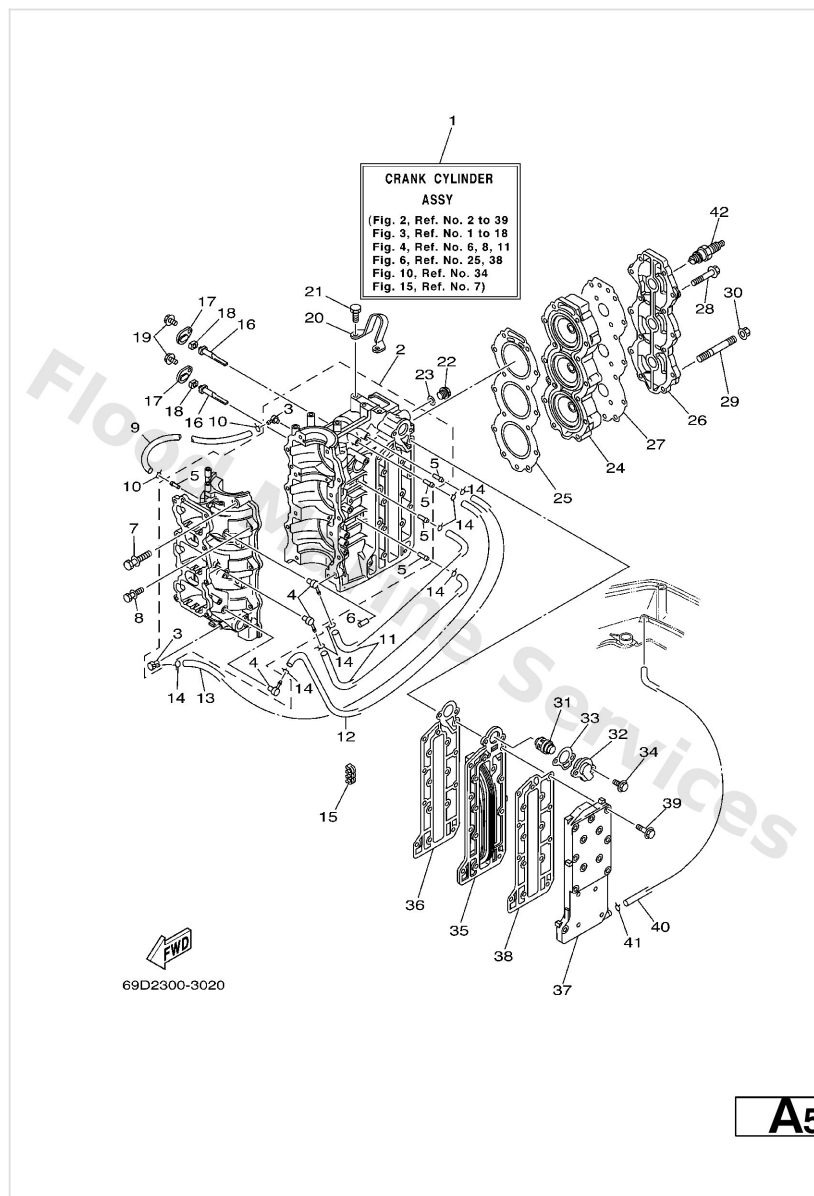


6H20010-0030

A7

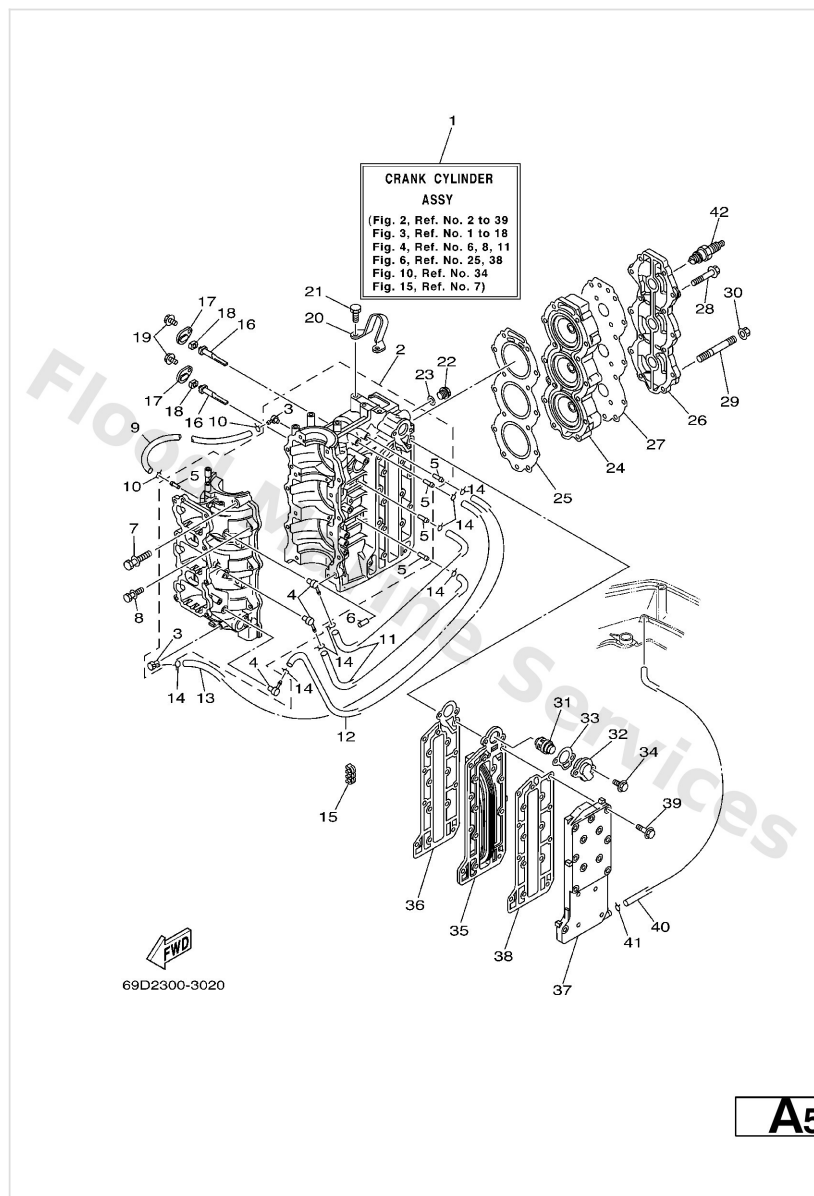
Ref	Part	
14	<a href="#">6K5-11601-02</a> Piston ring set (std)	<a href="#">Buy now</a>
14	<a href="#">6K5-11601-12</a> Piston ring set (1st o/s) AP	<a href="#">Buy now</a>
14	<a href="#">6K5-11601-22</a> Piston ring set (2nd o/s) AP	<a href="#">Buy now</a>
15	<a href="#">6H3-11633-00</a> Pin, piston	<a href="#">Buy now</a>
16	<a href="#">688-11634-10</a> Clip, piston pin	<a href="#">Buy now</a>
17	<a href="#">93603-18M09</a> Pin, dowel b (6h3)	<a href="#">Buy now</a>
18	<a href="#">90201-20417</a> Washer, plate(663)	<a href="#">Buy now</a>

# Cylinder. Crankcase



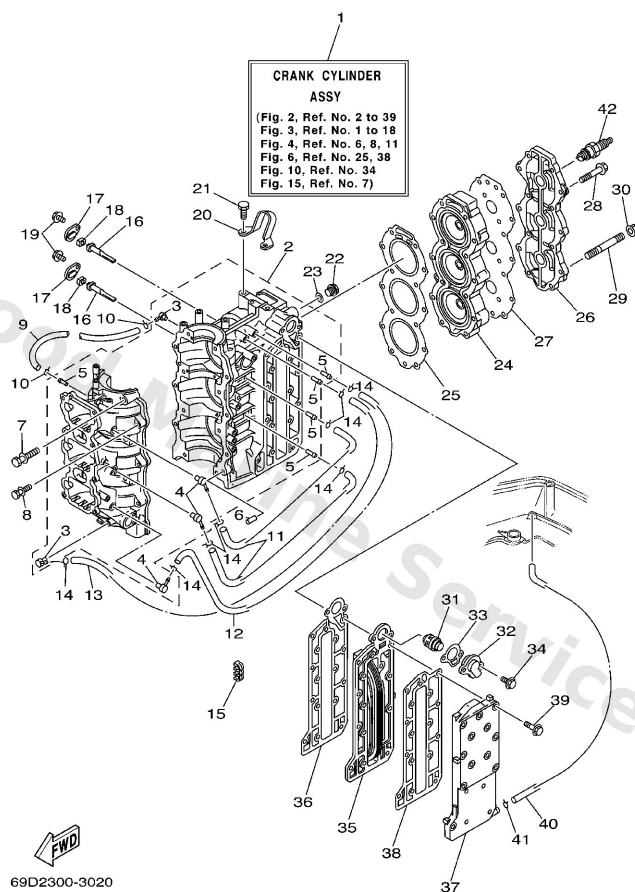
Ref	Part	
3	<a href="#">688-11370-01</a> Check valve assembly	<a href="#">Buy now</a>
4	<a href="#">650-11370-01</a> Check valve assembly	<a href="#">Buy now</a>
5	<a href="#">624-14485-00</a> Pipe, joint	<a href="#">Buy now</a>
6	<a href="#">93608-12063</a> Pin, dowel (626)	<a href="#">Buy now</a>
7	<a href="#">90119-10005</a> Bolt, with washer	<a href="#">Buy now</a>
8	<a href="#">90119-08M64</a> Bolt, with washer	<a href="#">Buy now</a>
9	<a href="#">90445-07M44</a> Hose (I390)	<a href="#">Buy now</a>
10	<a href="#">90467-06016</a> Clip (655)	<a href="#">Buy now</a>
11	<a href="#">90445-07M02</a> Hose (I200)	<a href="#">Buy now</a>
12	<a href="#">90445-07M45</a> Hose (I390)	<a href="#">Buy now</a>
13	<a href="#">90445-07M82</a> Hose (I770)	<a href="#">Buy now</a>
15	<a href="#">90464-07M05</a> Clamp (6g5)	<a href="#">Buy now</a>
16	<a href="#">6H3-11325-01</a> Anode	<a href="#">Buy now</a>
18	<a href="#">6H3-11328-00</a> Grommet, anode	<a href="#">Buy now</a>
19	<a href="#">90119-06023</a> Bolt, with washer	<a href="#">Buy now</a>

# Cylinder. Crankcase



Ref	Part	
20	<a href="#">6K5-11119-01</a> Hanger, engine	<a href="#">Buy now</a>
21	<a href="#">90101-08002</a> Bolt	<a href="#">Buy now</a>
22	<a href="#">90340-14M00</a> Plug, straight screw(62y)	<a href="#">Buy now</a>
23	<a href="#">90430-14115</a> Gasket (663)	<a href="#">Buy now</a>
25	<a href="#">6H3-11181-A1</a> Gasket, cylinder head 1	<a href="#">Buy now</a>
27	<a href="#">6H3-11193-A1</a> Gasket, head cover 1	<a href="#">Buy now</a>
28	<a href="#">90119-08MA5</a> Bolt, with washer	<a href="#">Buy now</a>
29	<a href="#">90116-08M69</a> Bolt, stud	<a href="#">Buy now</a>
30	<a href="#">90179-08M34</a> Nut	<a href="#">Buy now</a>
31	<a href="#">6H3-12411-10</a> Thermostat	<a href="#">Buy now</a>
32	<a href="#">6H3-12413-00-1S</a> Cover, thermostat	<a href="#">Buy now</a>
33	<a href="#">6H3-12414-A1</a> Gasket, cover	<a href="#">Buy now</a>
34	<a href="#">90119-06MA3</a> Bolt, with washer	<a href="#">Buy now</a>
35	<a href="#">6H3-41111-01-1S</a> Inner cover, exhaust	<a href="#">Buy now</a>
36	<a href="#">6H3-41112-A0</a> Gasket, exhaust inner cover	<a href="#">Buy now</a>

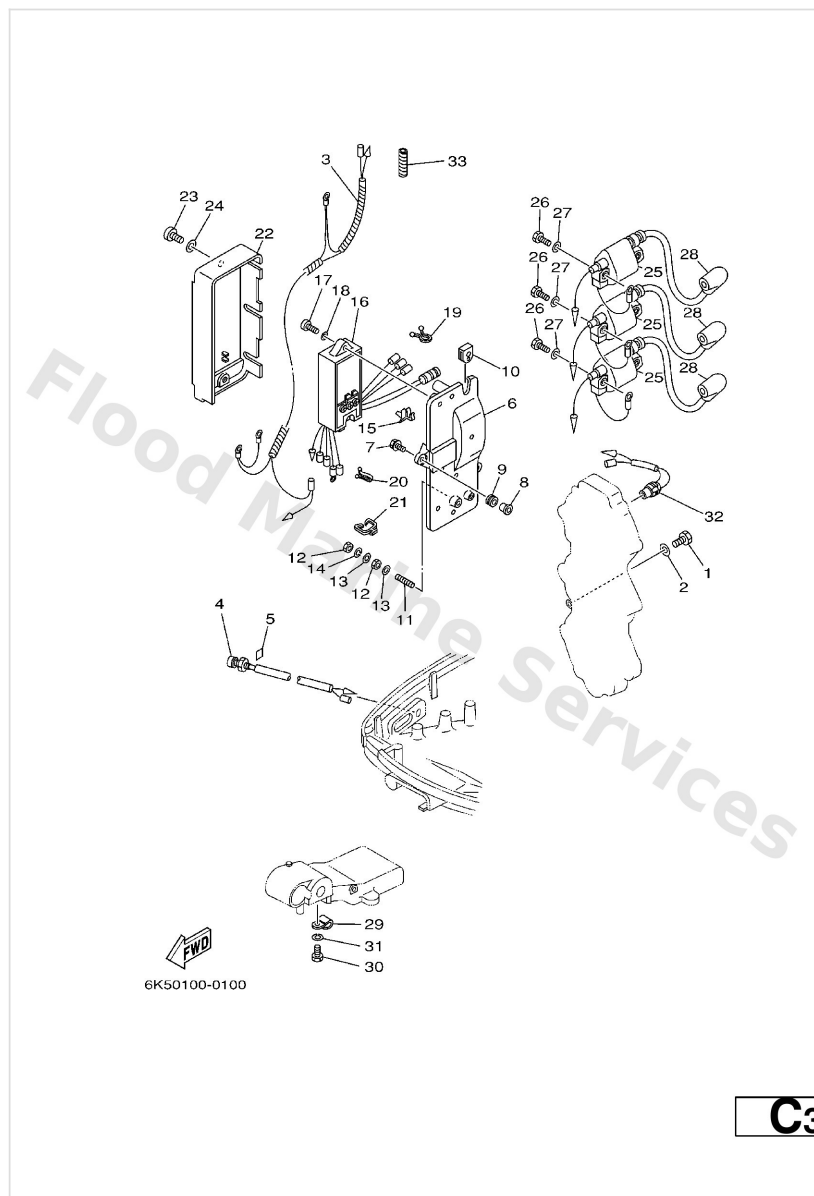
# Cylinder. Crankcase



**A5**

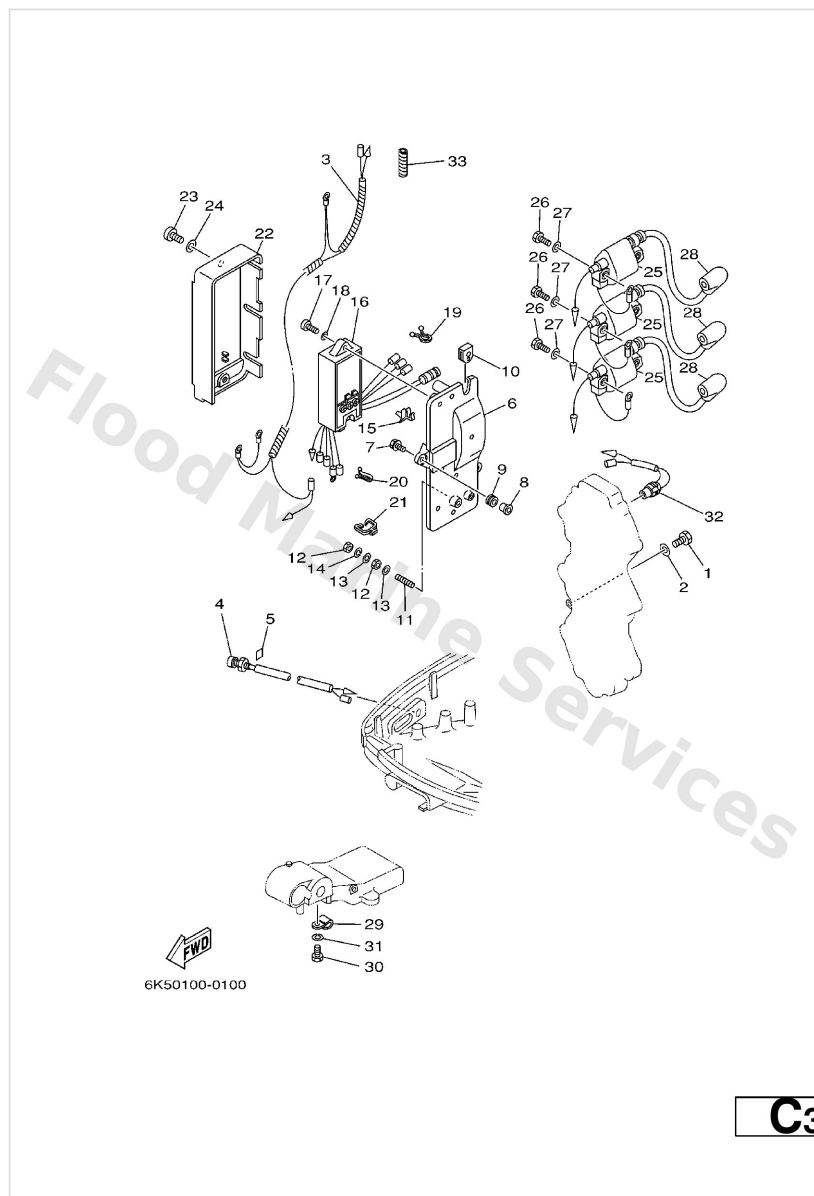
Ref	Part	
37	<a href="#">6H3-41113-02-1S</a> Outer cover, exhaust	<a href="#">Buy now</a>
38	<a href="#">6H3-41114-A0</a> Gasket, exhaust outer cover	<a href="#">Buy now</a>
39	<a href="#">90119-06MA5</a> Bolt, with washer	<a href="#">Buy now</a>
40	<a href="#">663-24312-01</a> Pipe 1	<a href="#">Buy now</a>
41	<a href="#">90467-08004</a> Clip, pipe 6162435600	<a href="#">Buy now</a>
42	<a href="#">94702-00247</a> Plug, spark (br8hs-10)	<a href="#">Buy now</a>

# Electrical

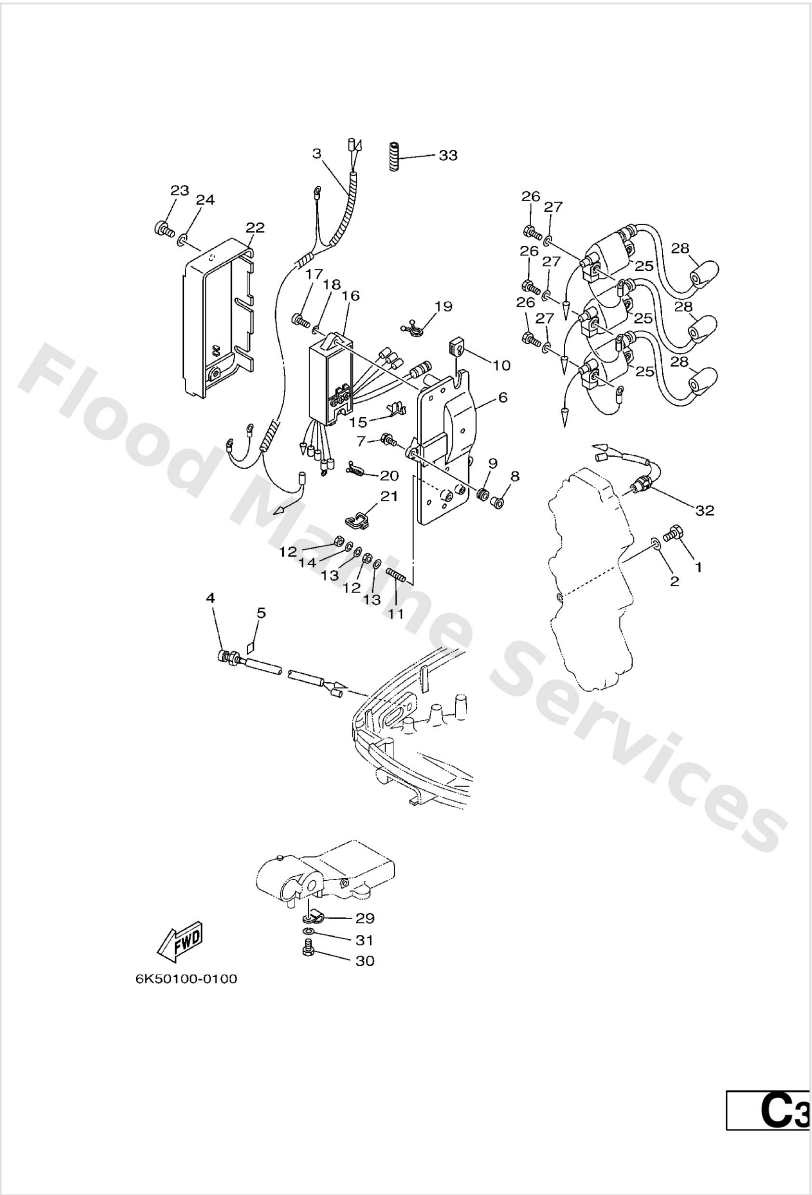


Ref	Part	
1	<a href="#">97013-06012</a> Bolt(gh1)	<a href="#">Buy now</a>
2	<a href="#">92903-06600</a> Washer, plain (646)	<a href="#">Buy now</a>
3	<a href="#">6K5-82531-00</a> Wire, lead	<a href="#">Buy now</a>
4	<a href="#">6H4-85411-00</a> Overheat warning lamp	<a href="#">Buy now</a>
5	<a href="#">6H4-85415-00</a> Mark, Signal Lamp	<a href="#">Buy now</a>
6	<a href="#">6H3-85542-00-94</a> Bracket	<a href="#">Buy now</a>
7	<a href="#">90105-06M14</a> Bolt (6e0)	<a href="#">Buy now</a>
8	<a href="#">90387-06M43</a> Coller (6e9)	<a href="#">Buy now</a>
9	<a href="#">90480-13M24</a> Grommet (6e9)	<a href="#">Buy now</a>
10	<a href="#">6H3-81922-00</a> Grommet	<a href="#">Buy now</a>
11	<a href="#">90116-06M07</a> Bolt, stud (688)	<a href="#">Buy now</a>
12	<a href="#">95380-06700</a> Nut	<a href="#">Buy now</a>
13	<a href="#">92990-06200</a> Ybs66-6 washer, plain	<a href="#">Buy now</a>
14	<a href="#">92990-06100</a> Washer(6a1)	<a href="#">Buy now</a>
15	<a href="#">90464-04M12</a> Clamp (6h3)	<a href="#">Buy now</a>

# Electrical

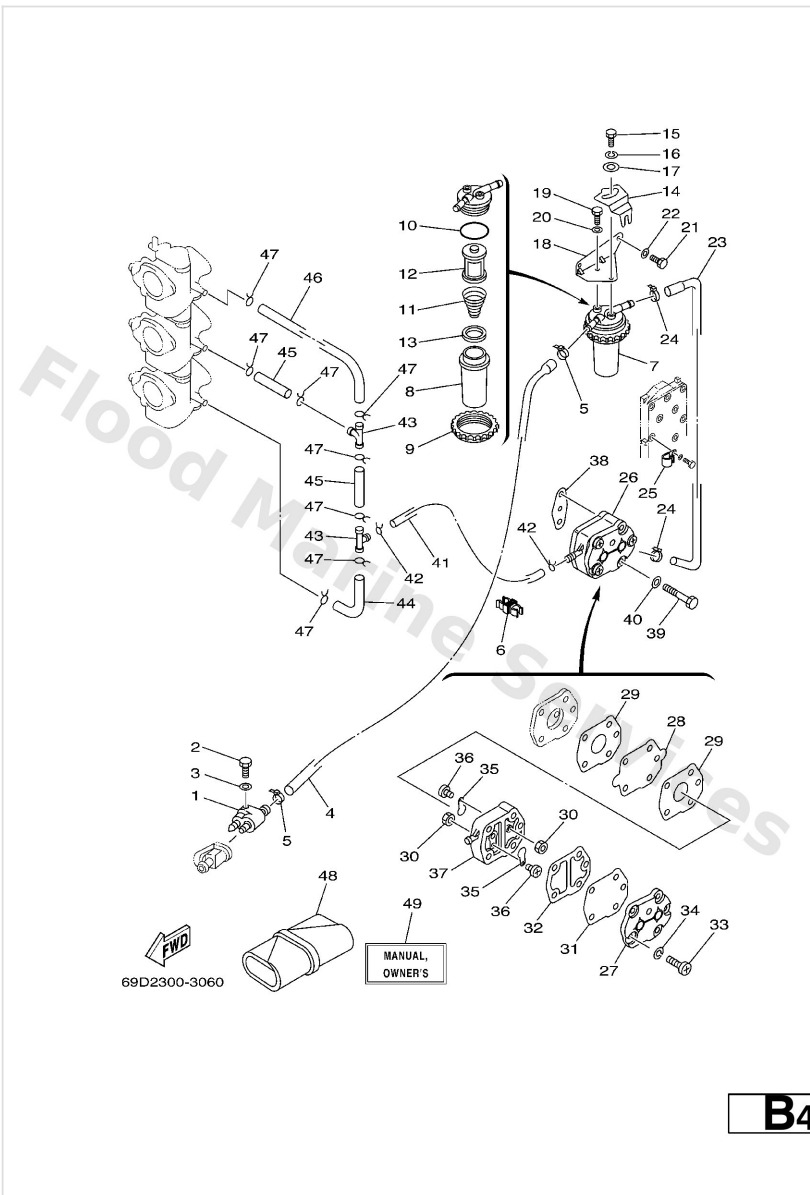


Ref	Part	
16	<a href="#">6H3-85540-11</a> C.d.i. unit assembly	<a href="#">Buy now</a>
17	<a href="#">97880-06025</a> Screw, pan head(6b0)	<a href="#">Buy now</a>
18	<a href="#">92990-06600</a> Washer, plain (646)	<a href="#">Buy now</a>
19	<a href="#">90464-08M07</a> Clamp	<a href="#">Buy now</a>
20	<a href="#">90464-12M17</a> Clamp(6j8)	<a href="#">Buy now</a>
21	<a href="#">90464-07M10</a> Clamp (6h3)	<a href="#">Buy now</a>
22	<a href="#">6H3-81916-00</a> Cover, terminal	<a href="#">Buy now</a>
23	<a href="#">97885-06012</a> Screw, pan head(62j)	<a href="#">Buy now</a>
24	<a href="#">92995-06600</a> Washer, plain (646)	<a href="#">Buy now</a>
25	<a href="#">6H3-85570-10</a> Ignition coil assembly	<a href="#">Buy now</a>
26	<a href="#">97013-06025</a> Bolt(62y)	<a href="#">Buy now</a>
28	<a href="#">6G1-82370-21</a> Plug cap assembly	<a href="#">Buy now</a>
29	<a href="#">90465-06M90</a> Clamp	<a href="#">Buy now</a>
31	<a href="#">92903-06100</a> Washer(6a1)	<a href="#">Buy now</a>
32	<a href="#">688-82560-10</a> Thermo switch assembly	<a href="#">Buy now</a>



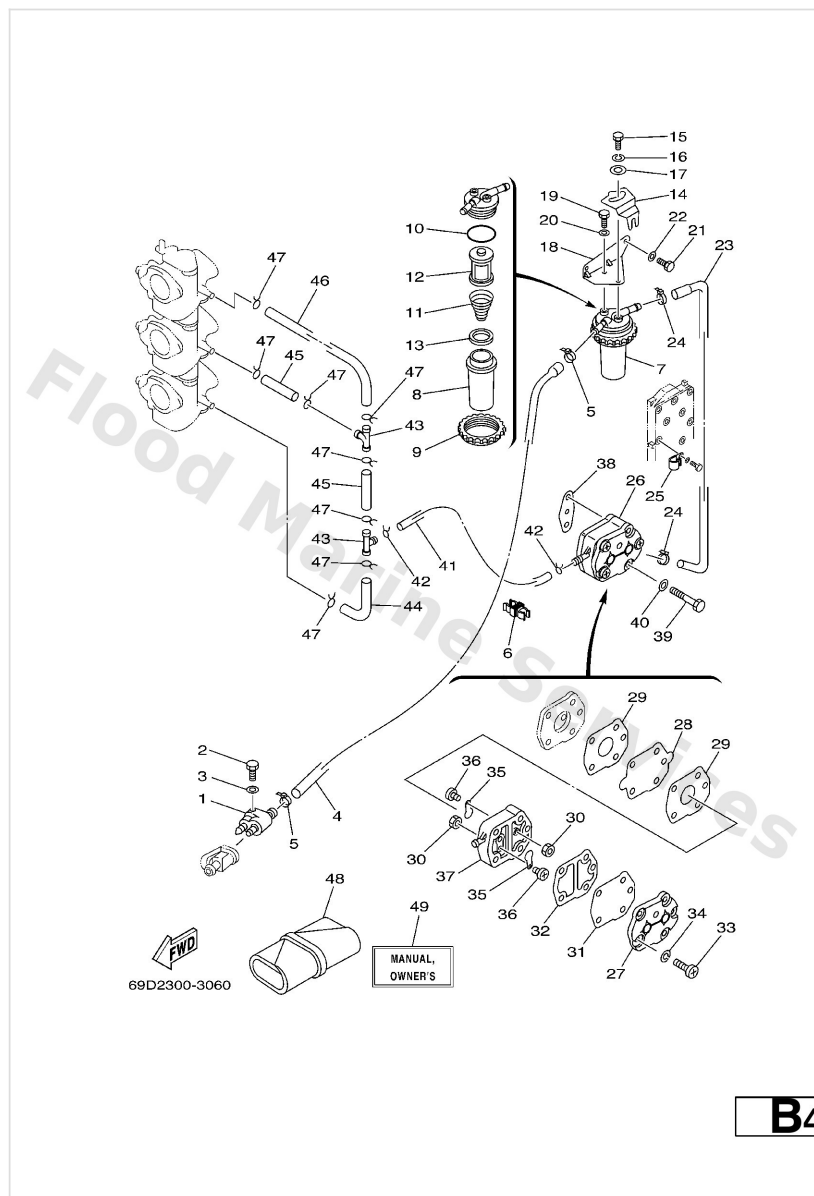
Ref	Part	
33	<a href="#">90446-10M02</a> Tube (6e5)	<a href="#">Buy now</a>

Fuel



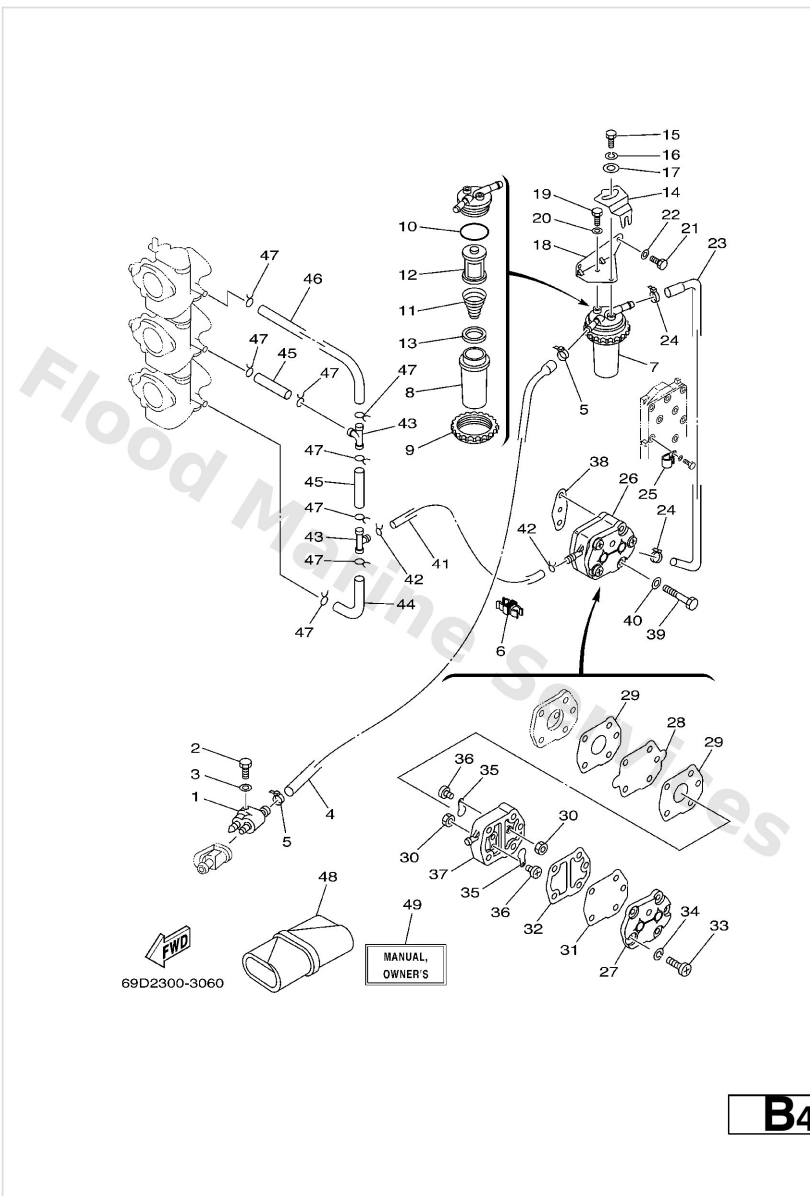
Ref	Part	
1	<a href="#">6G1-24304-02</a> Fuel pipe joint comp. 1	<a href="#">Buy now</a>
2	<a href="#">97095-06025</a> Bolt	<a href="#">Buy now</a>
3	<a href="#">92995-06600</a> Washer, plain (646)	<a href="#">Buy now</a>
4	<a href="#">69D-24311-00</a> Pipe, fuel 1	<a href="#">Buy now</a>
5	<a href="#">90465-11M10</a> Clamp	<a href="#">Buy now</a>
6	<a href="#">90464-10M59</a> Clamp	<a href="#">Buy now</a>
7	<a href="#">61A-24560-04</a> Filter assembly	<a href="#">Buy now</a>
8	<a href="#">61A-24521-00</a> Cup, filter	<a href="#">Buy now</a>
9	<a href="#">65L-24531-01</a> Nut	<a href="#">Buy now</a>
10	<a href="#">61A-24564-00</a> O-ring	<a href="#">Buy now</a>
11	<a href="#">61A-24577-01</a> Spring	<a href="#">Buy now</a>
12	<a href="#">61A-24563-00</a> Element, filter	<a href="#">Buy now</a>
13	<a href="#">61A-24469-00</a> Float, water level	<a href="#">Buy now</a>
14	<a href="#">65L-24558-00</a> Holder, filter	<a href="#">Buy now</a>
15	<a href="#">97095-06016</a> Bolt, hexagon deep recess	<a href="#">Buy now</a>

# Fuel



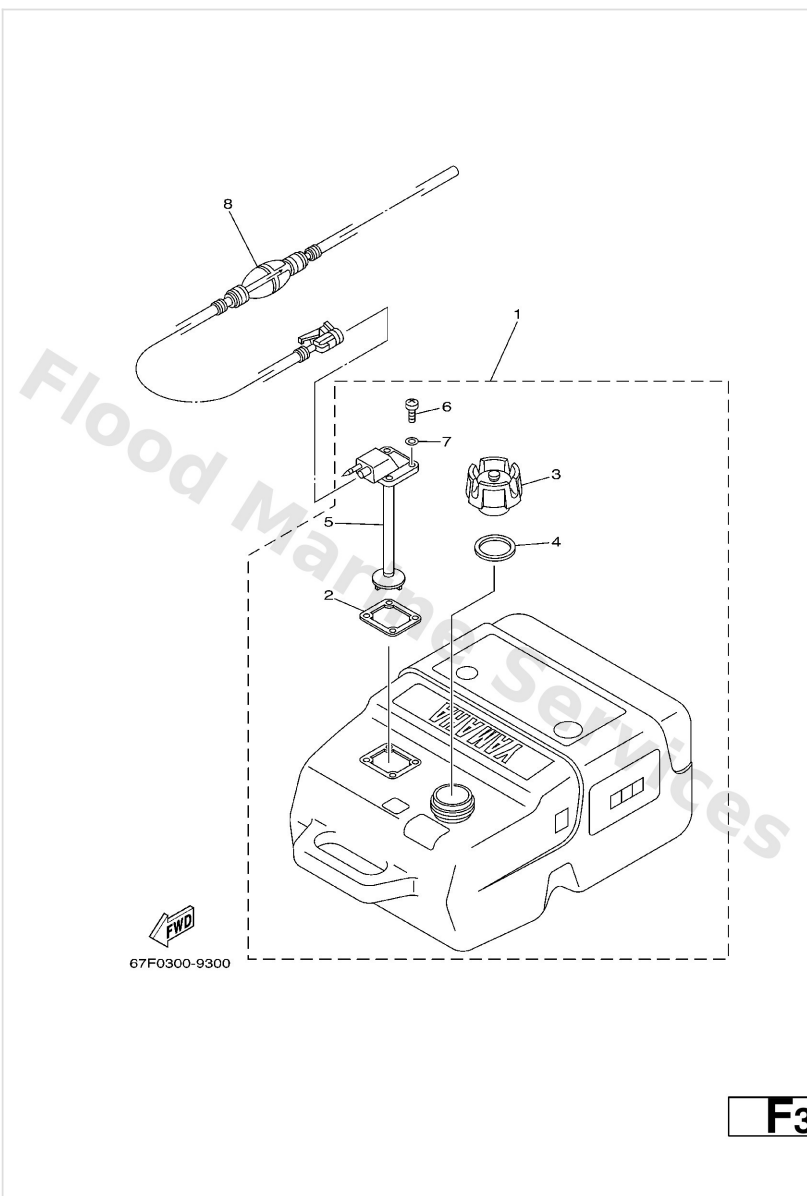
Ref	Part	
16	<a href="#">92995-06100</a> Washer(6a1)	<a href="#">Buy now</a>
17	<a href="#">90201-06068</a> Washer,plate (6k8)	<a href="#">Buy now</a>
18	<a href="#">69D-24566-01</a> Bracket, filter	<a href="#">Buy now</a>
19	<a href="#">97095-06014</a> Bolt(gj3)	<a href="#">Buy now</a>
23	<a href="#">69D-24312-00</a> Pipe 2	<a href="#">Buy now</a>
25	<a href="#">90465-08M83</a> Clamp	<a href="#">Buy now</a>
26	<a href="#">692-24410-00</a> Fuel pump assembly	<a href="#">Buy now</a>
27	<a href="#">6A0-24413-00</a> Cover, pump	<a href="#">Buy now</a>
28	<a href="#">692-24411-00</a> Diaphragm	<a href="#">Buy now</a>
29	<a href="#">648-24434-01</a> Gasket, body	<a href="#">Buy now</a>
30	<a href="#">95380-03600</a> Nut (6g8)	<a href="#">Buy now</a>
31	<a href="#">663-24411-00</a> Diaphragm	<a href="#">Buy now</a>
32	<a href="#">648-24435-02</a> Gasket, body 2	<a href="#">Buy now</a>
33	<a href="#">98503-05028</a> Ybs86-530 screw,panhead	<a href="#">Buy now</a>
34	<a href="#">92990-05100</a> Ybs67-5 washer, spring	<a href="#">Buy now</a>

# Fuel



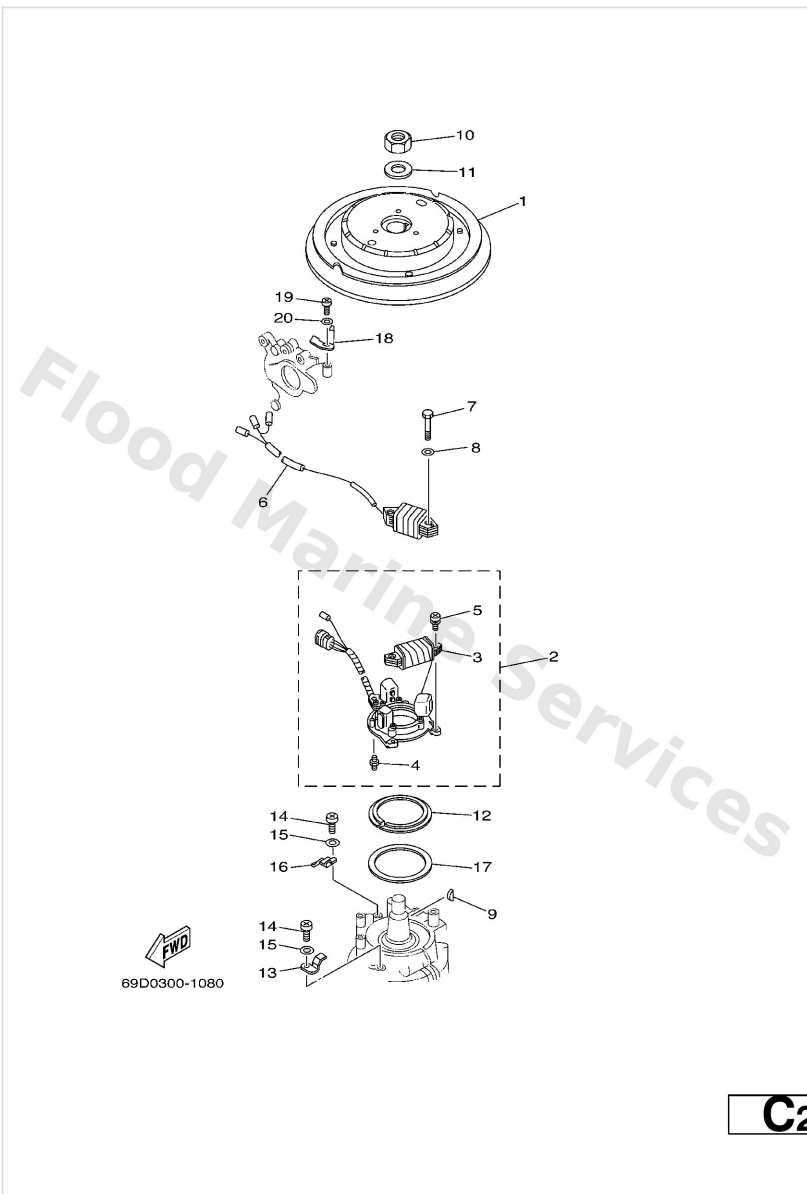
Ref	Part	
35	<a href="#">6A0-24421-01</a> Valve, check	<a href="#">Buy now</a>
36	<a href="#">6A0-14325-00</a> Screw, pan head	<a href="#">Buy now</a>
37	<a href="#">6A0-24412-02</a> Body 1	<a href="#">Buy now</a>
38	<a href="#">650-24431-A0</a> Gasket,fuel pump	<a href="#">Buy now</a>
39	<a href="#">97095-06040</a> Bolt (682)	<a href="#">Buy now</a>
41	<a href="#">90445-09072</a> Hose (I1500)	<a href="#">Buy now</a>
42	<a href="#">90467-08004</a> Clip, pipe 6162435600	<a href="#">Buy now</a>
43	<a href="#">688-24378-00</a> Pipe, joint	<a href="#">Buy now</a>
44	<a href="#">6H3-24313-00</a> Pipe, fuel 2	<a href="#">Buy now</a>
45	<a href="#">90445-09220</a> Hose (I1500)	<a href="#">Buy now</a>
46	<a href="#">6H3-24314-00</a> Pipe 4	<a href="#">Buy now</a>
48	<a href="#">656-W2810-02</a> Tool kit	<a href="#">Buy now</a>
49	<a href="#">69D-28199-60-A0</a> Manual,Owner's (F,S,P)	<a href="#">Buy now</a>

# Fuel Tank



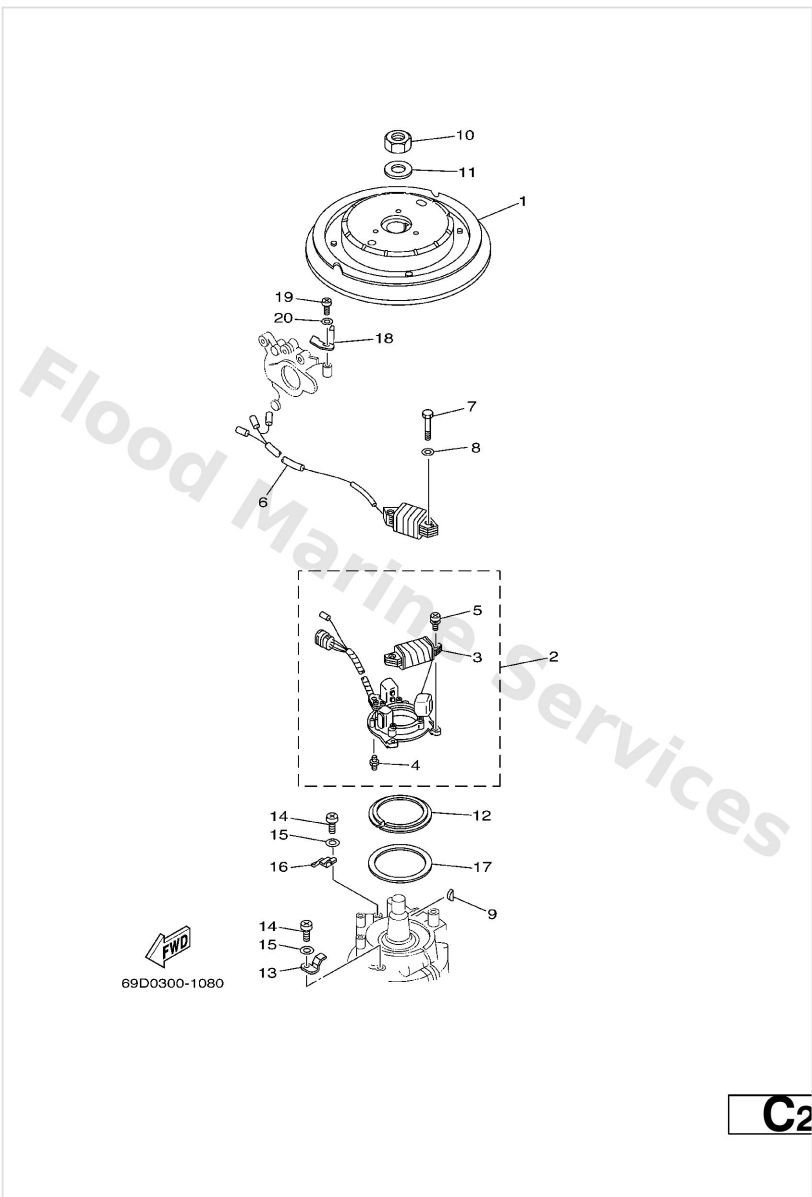
Ref	Part	
1	<a href="#">6YK-24201-01</a> Fuel Tank assembly (25L) AP PLASTIC, 25L	<a href="#">Buy now</a>
2	<a href="#">6YL-24268-01</a> Gasket, fuel meter	<a href="#">Buy now</a>
3	<a href="#">6YK-24610-00</a> Cap assembly WITH INDICATOR	<a href="#">Buy now</a>
4	<a href="#">6YL-24641-00</a> Gasket, cap 1	<a href="#">Buy now</a>
5	<a href="#">6YK-24260-01</a> Fuel meter assembly	<a href="#">Buy now</a>
6	<a href="#">90157-05M16</a> Screw, pan head	<a href="#">Buy now</a>
7	<a href="#">6YL-24329-00</a> Seal	<a href="#">Buy now</a>
8	<a href="#">6YL-24306-52</a> Fuel pipe comp. 1 AP	<a href="#">Buy now</a>

# Generator



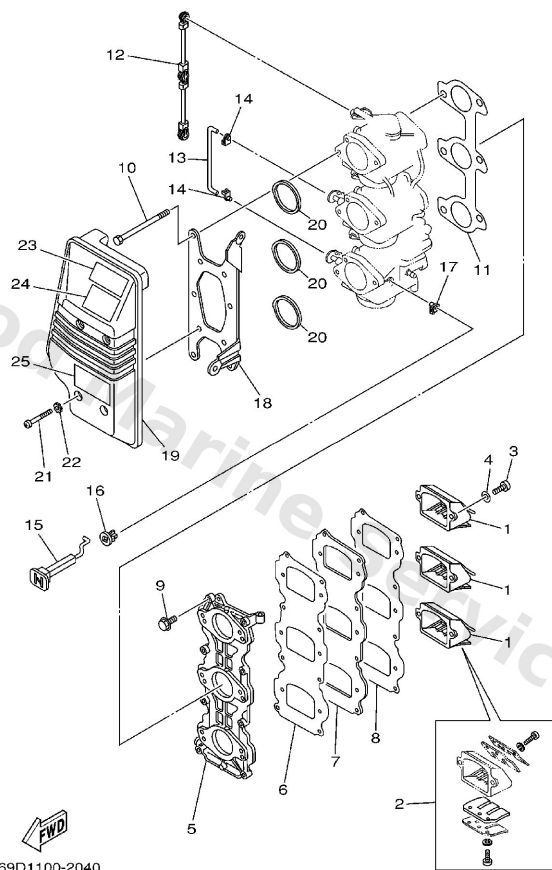
Ref	Part	
1	<a href="#">6K5-85550-10</a> Rotor assembly	<a href="#">Buy now</a>
2	<a href="#">6H3-85510-A1</a> Stator assembly	<a href="#">Buy now</a>
3	<a href="#">6H3-85520-00</a> Charge coil assembly	<a href="#">Buy now</a>
4	<a href="#">663-85518-00</a> Joint, ball	<a href="#">Buy now</a>
5	<a href="#">97902-05125</a> Screw, with washer(6m6)	<a href="#">Buy now</a>
6	<a href="#">6H3-85533-A0</a> Lighting coil assembly	<a href="#">Buy now</a>
7	<a href="#">97013-06030</a> Bolt	<a href="#">Buy now</a>
8	<a href="#">92903-06600</a> Washer, plain (646)	<a href="#">Buy now</a>
9	<a href="#">90280-05015</a> Key, woodruff	<a href="#">Buy now</a>
10	<a href="#">90170-20137</a> Nut, hexagon(663)	<a href="#">Buy now</a>
11	<a href="#">90201-21M18</a> Washer, plate (663)	<a href="#">Buy now</a>
12	<a href="#">6H4-41611-00</a> Retainer, magneto base	<a href="#">Buy now</a>
13	<a href="#">6H3-41612-00</a> Retainer, magneto base 2	<a href="#">Buy now</a>
14	<a href="#">97885-06012</a> Screw, pan head(62j)	<a href="#">Buy now</a>
15	<a href="#">92995-06600</a> Washer, plain (646)	<a href="#">Buy now</a>

# Generator



Ref	Part	
16	<a href="#">6H3-41612-10</a> Retainer, magneto base 2	<a href="#">Buy now</a>
17	<a href="#">6K5-41618-00</a> Washer, magneto	<a href="#">Buy now</a>
18	<a href="#">6K5-81332-60</a> Plate, timing	<a href="#">Buy now</a>
19	<a href="#">97885-06010</a> Screw pan head	<a href="#">Buy now</a>

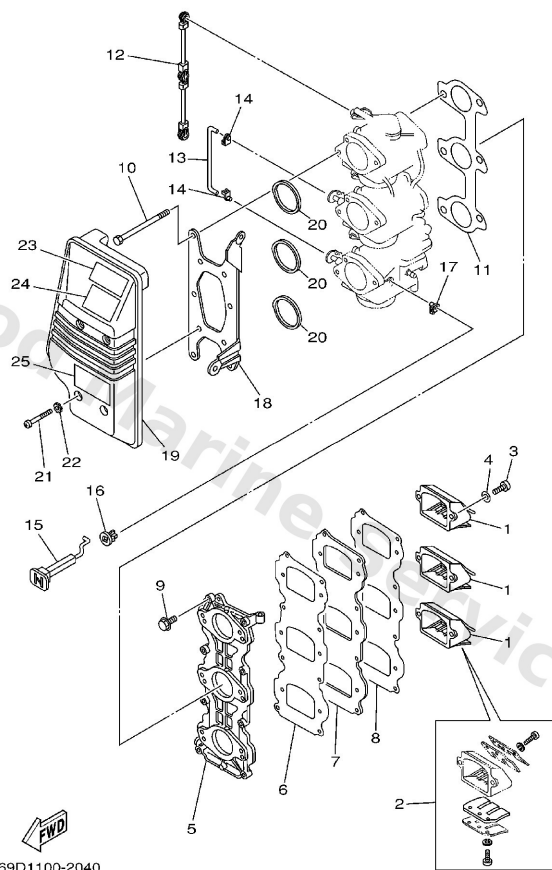
# Intake



**B1**

Ref	Part	
1	<a href="#">6H2-13610-00</a> Reed valve assembly	<a href="#">Buy now</a>
2	<a href="#">688-W0004-00</a> Reed set	<a href="#">Buy now</a>
3	<a href="#">97880-05016</a> Screw, pan head(6b0)	<a href="#">Buy now</a>
4	<a href="#">92990-05600</a> Washer, plain (646)	<a href="#">Buy now</a>
5	<a href="#">6H3-13641-03-94</a> Manifold, intake 1	<a href="#">Buy now</a>
6	<a href="#">6H3-13621-A1</a> Gasket, valve seat	<a href="#">Buy now</a>
7	<a href="#">6H3-13624-00-94</a> Plate, reed valve	<a href="#">Buy now</a>
8	<a href="#">6H3-13622-A1</a> Gasket, valve seat	<a href="#">Buy now</a>
9	<a href="#">90119-06MA3</a> Bolt, with washer	<a href="#">Buy now</a>
10	<a href="#">97095-06095</a> Bolt, hexagon deep recess	<a href="#">Buy now</a>
11	<a href="#">6H3-14198-A1</a> Gasket	<a href="#">Buy now</a>
12	<a href="#">6H3-41217-00</a> Rod, accel lever	<a href="#">Buy now</a>
13	<a href="#">6H3-41257-00</a> Rod, choke link 2	<a href="#">Buy now</a>
14	<a href="#">661-41262-02</a> Joint, choke lever	<a href="#">Buy now</a>
15	<a href="#">6H3-41271-00</a> Knob, choke	<a href="#">Buy now</a>

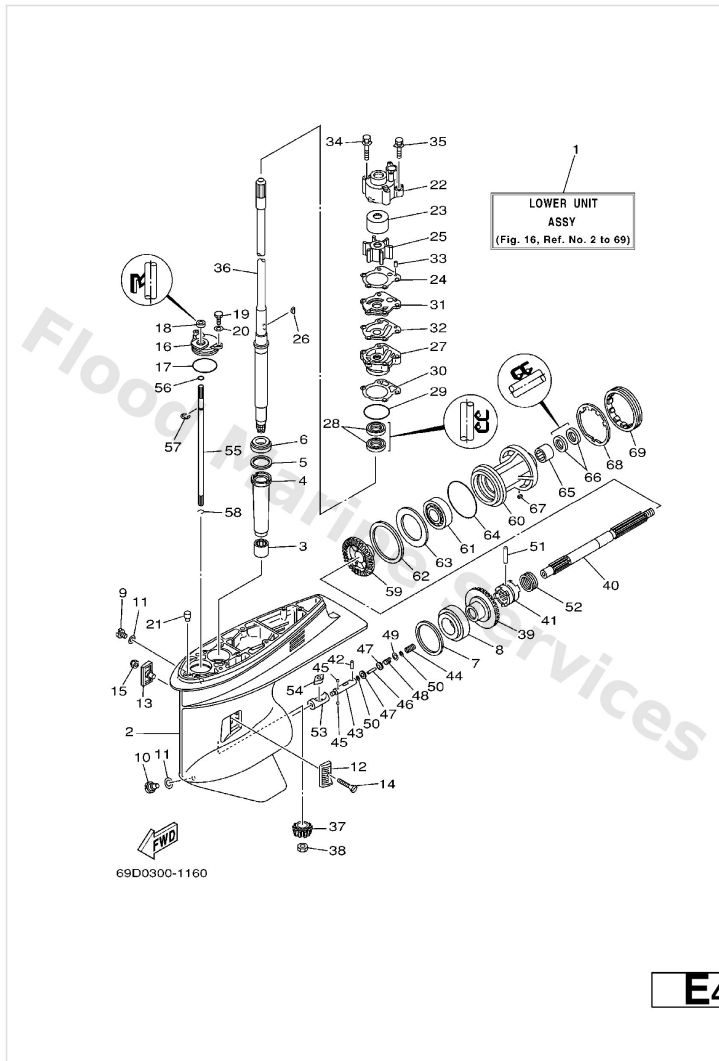
# Intake



**B1**

Ref	Part	
16	<a href="#">689-41273-00</a> Grommet	<a href="#">Buy now</a>
18	<a href="#">6H3-14413-10</a> Stay	<a href="#">Buy now</a>
19	<a href="#">6H3-14440-02</a> Silencer assembly, intake	<a href="#">Buy now</a>
20	<a href="#">6H3-14457-01</a> Seal	<a href="#">Buy now</a>
21	<a href="#">97885-06045</a> Screw, pan head(6b0)	<a href="#">Buy now</a>
22	<a href="#">90209-06M05</a> Washer (688)	<a href="#">Buy now</a>
23	<a href="#">6A1-83625-41</a> Mark 5	<a href="#">Buy now</a>
24	<a href="#">6A1-83625-51</a> Mark 5	<a href="#">Buy now</a>
25	<a href="#">6K5-14488-00</a> Label, caution	<a href="#">Buy now</a>

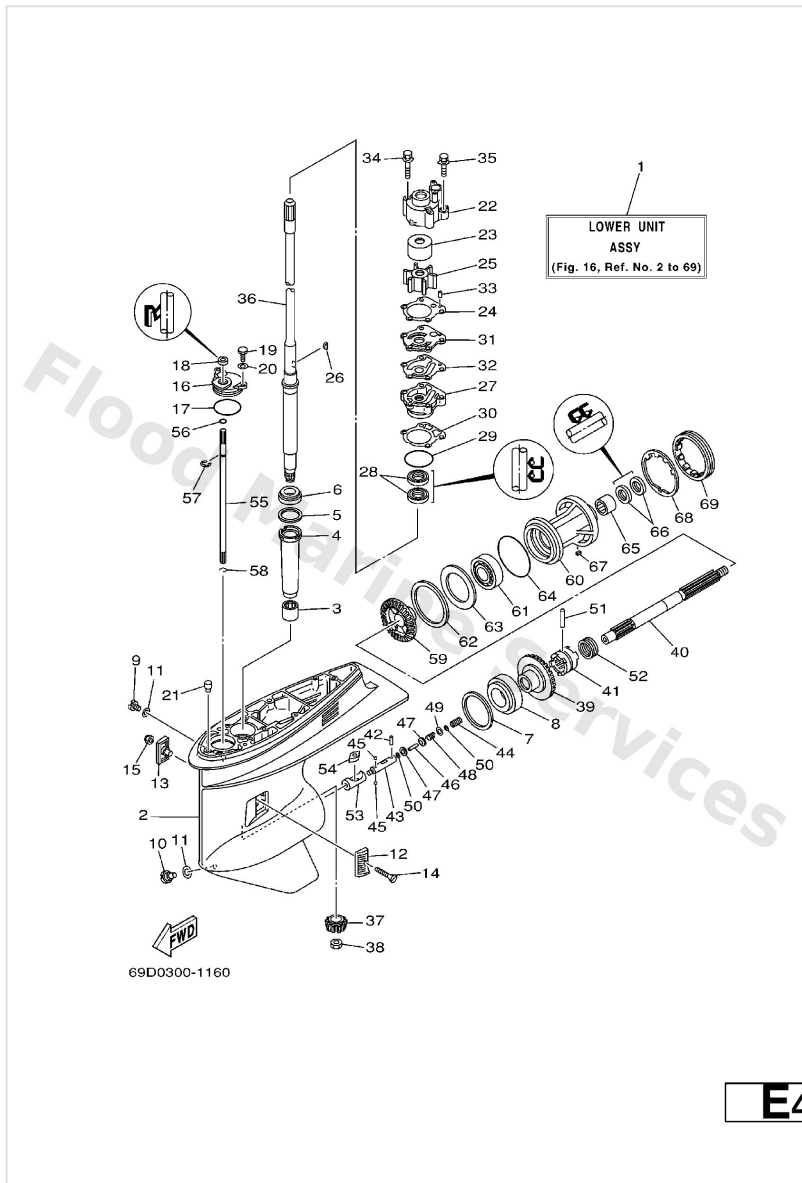
# Lower Casing. Drive 1



E4

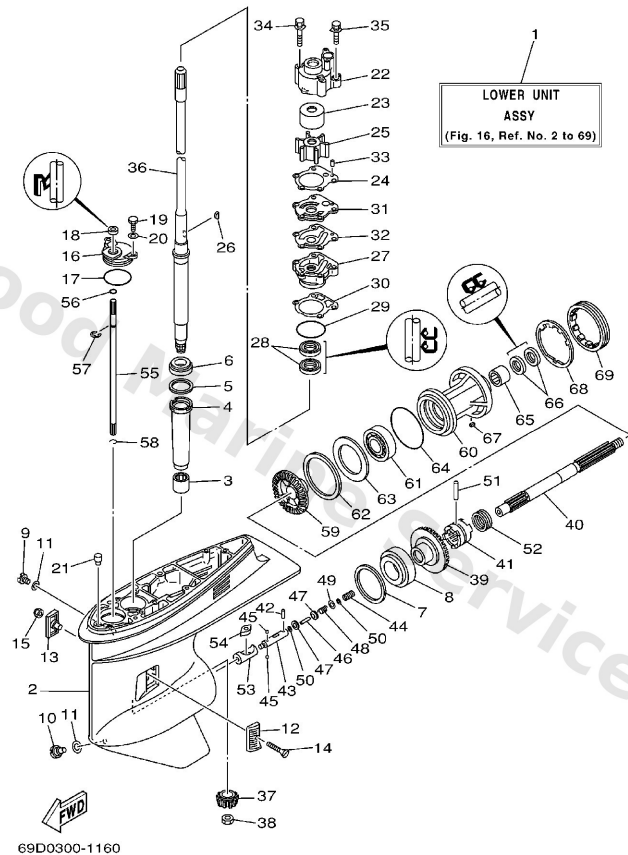
Ref	Part	
1	<a href="#">69D-45300-10-4D</a> Lower unit assembly	<a href="#">Buy now</a>
2	<a href="#">6H1-45301-03-4D</a> Lower casing set	<a href="#">Buy now</a>
3	<a href="#">93315-325V1</a> Bearing, needle (688)	<a href="#">Buy now</a>
4	<a href="#">688-45536-01</a> Sleeve, drive shaft	<a href="#">Buy now</a>
5	<a href="#">688-45587-01-10</a> Shim (t:0.10mm) UR	<a href="#">Buy now</a>
5	<a href="#">688-45587-01-12</a> Shim (t:0.12mm) UR	<a href="#">Buy now</a>
5	<a href="#">688-45587-01-15</a> Shim (t:0.15mm) UR	<a href="#">Buy now</a>
5	<a href="#">688-45587-01-18</a> Shim (t:0.18mm) UR	<a href="#">Buy now</a>
5	<a href="#">688-45587-01-30</a> Shim (t:0.30mm) UR	<a href="#">Buy now</a>
5	<a href="#">688-45587-01-40</a> Shim (t:0.40mm) UR	<a href="#">Buy now</a>
5	<a href="#">688-45587-01-50</a> Shim (t:0.50mm) UR	<a href="#">Buy now</a>
6	<a href="#">93332-000U3</a> Brg,tapered roller 50mm (688)	<a href="#">Buy now</a>
7	<a href="#">688-45567-01-10</a> Shim (t:0.10mm) UR	<a href="#">Buy now</a>
7	<a href="#">688-45567-01-12</a> Shim (t:0.12mm) UR	<a href="#">Buy now</a>
7	<a href="#">688-45567-01-15</a> Shim (t:0.15mm) UR	<a href="#">Buy now</a>

## Lower Casing. Drive 1



Ref	Part	
7	<a href="#">688-45567-01-18</a> Shim (t:0.18mm) UR	<a href="#">Buy now</a>
7	<a href="#">688-45567-01-30</a> Shim (t:0.30mm) UR	<a href="#">Buy now</a>
7	<a href="#">688-45567-01-40</a> Shim (t:0.40mm) UR	<a href="#">Buy now</a>
7	<a href="#">688-45567-01-50</a> Shim (t:0.50mm) UR	<a href="#">Buy now</a>
8	<a href="#">93332-000W7</a> Bearing(6b0)	<a href="#">Buy now</a>
9	<a href="#">90340-08002</a> Plug, straight screw	<a href="#">Buy now</a>
10	<a href="#">688-45341-10</a> Plug, drain	<a href="#">Buy now</a>
11	<a href="#">90430-08020</a> Gasket	<a href="#">Buy now</a>
12	<a href="#">6H1-45214-00</a> Cover, water inlet	<a href="#">Buy now</a>
13	<a href="#">6H1-45215-00</a> Cover, water inlet	<a href="#">Buy now</a>
14	<a href="#">90151-05M00</a> Screw, countersunk(692)	<a href="#">Buy now</a>
15	<a href="#">90185-05002</a> Nut nylon (sus)(ex4)	<a href="#">Buy now</a>
16	<a href="#">688-45321-00</a> Plate	<a href="#">Buy now</a>
17	<a href="#">93210-49046</a> O-ring (620)	<a href="#">Buy now</a>
18	<a href="#">93106-09014</a> Oil seal	<a href="#">Buy now</a>

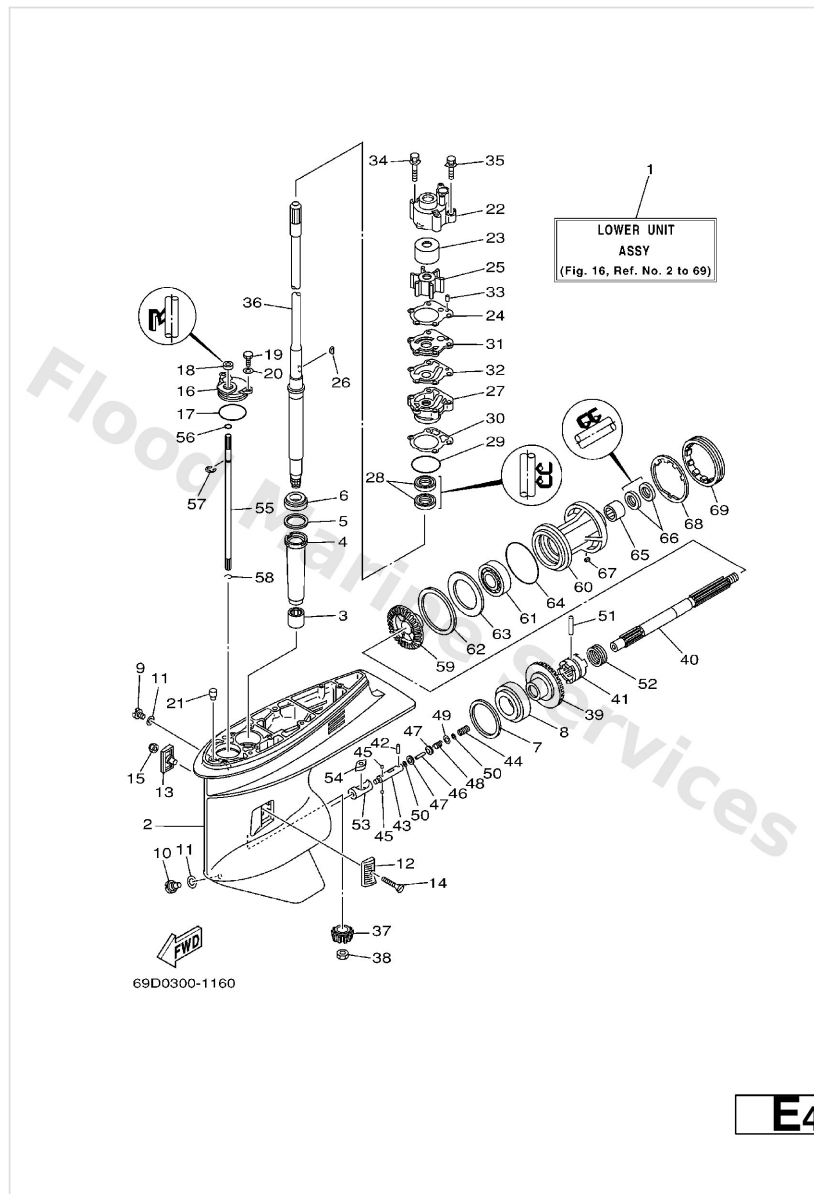
## Lower Casing. Drive 1



**E4**

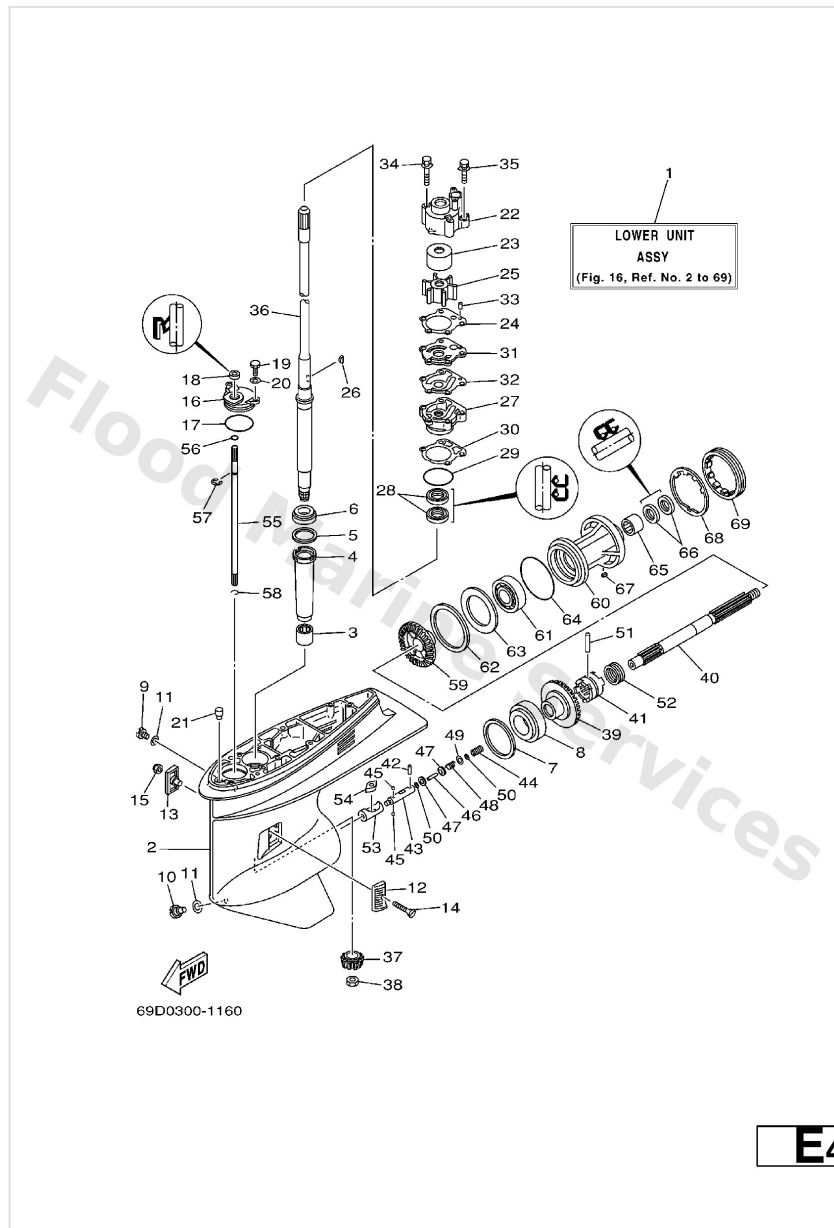
Ref	Part	
19	<a href="#">97095-06016</a> Bolt, hexagon deep recess	<a href="#">Buy now</a>
20	<a href="#">92995-06600</a> Washer, plain (646)	<a href="#">Buy now</a>
21	<a href="#">6J8-45378-00</a> Nipple, hose (plug)	<a href="#">Buy now</a>
22	<a href="#">688-44311-01</a> Housing, water pump 1	<a href="#">Buy now</a>
23	<a href="#">69D-44322-00</a> Insert, cartridge	<a href="#">Buy now</a>
24	<a href="#">688-44315-A0</a> Gasket, water pump 1	<a href="#">Buy now</a>
25	<a href="#">688-44352-03</a> Impeller	<a href="#">Buy now</a>
26	<a href="#">90280-04M04</a> Key, woodruff (688)	<a href="#">Buy now</a>
27	<a href="#">688-44341-01-94</a> Housing, water pump set	<a href="#">Buy now</a>
28	<a href="#">93101-25M03</a> Oil seal	<a href="#">Buy now</a>
29	<a href="#">93210-46044</a> O-ring	<a href="#">Buy now</a>
30	<a href="#">688-44316-A0</a> Gasket, water pump 2	<a href="#">Buy now</a>
31	<a href="#">688-44323-40</a> Outer plate, cartridge	<a href="#">Buy now</a>
32	<a href="#">688-44324-A0</a> Gasket, cartridge Outer plate	<a href="#">Buy now</a>
33	<a href="#">93604-10M03</a> Pin, dowel (688)	<a href="#">Buy now</a>

## Lower Casing. Drive 1



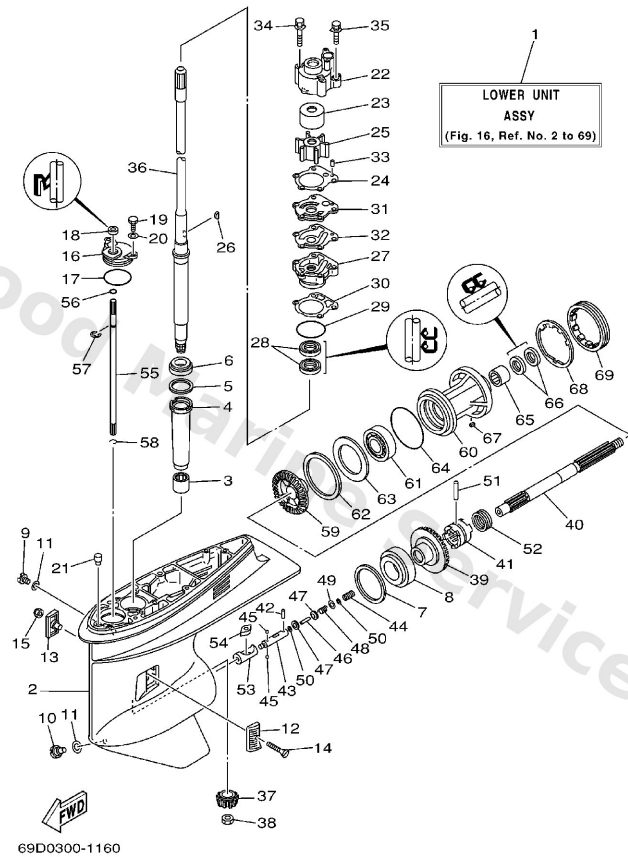
Ref	Part	
34	<a href="#">90119-08M16</a> Bolt, with washer(6h0)	<a href="#">Buy now</a>
35	<a href="#">90119-08M13</a> Bolt, with washer(6h0)	<a href="#">Buy now</a>
36	<a href="#">69D-45501-10</a> Drive shaft comp.	<a href="#">Buy now</a>
37	<a href="#">6K5-45551-00</a> Pinion	<a href="#">Buy now</a>
38	<a href="#">90170-16M01</a> Nut, hexagon (688)	<a href="#">Buy now</a>
39	<a href="#">6K5-45560-00</a> Gear	<a href="#">Buy now</a>
40	<a href="#">6H1-45611-01</a> Shaft, propeller	<a href="#">Buy now</a>
41	<a href="#">6H1-45631-01</a> Clutch, dog	<a href="#">Buy now</a>
42	<a href="#">93603-12M11</a> Pin, dowel(6h1)	<a href="#">Buy now</a>
43	<a href="#">6H1-45634-02</a> Slide, shift	<a href="#">Buy now</a>
44	<a href="#">90501-16M65</a> Spring, compression(6h1)	<a href="#">Buy now</a>
45	<a href="#">93503-16003</a> Ball	<a href="#">Buy now</a>
46	<a href="#">6H1-45668-00</a> Shaft, free 1	<a href="#">Buy now</a>
47	<a href="#">6H1-45635-00</a> Plunger, shift	<a href="#">Buy now</a>
48	<a href="#">90501-12M48</a> Spring (6h1)	<a href="#">Buy now</a>

## Lower Casing. Drive 1



Ref	Part	
49	<a href="#">90201-03313</a> Washer, plate 8077743700	<a href="#">Buy now</a>
50	<a href="#">90183-02M03</a> Nut, spring (6h1)	<a href="#">Buy now</a>
51	<a href="#">90250-07M02</a> Pin, straight (688)	<a href="#">Buy now</a>
52	<a href="#">688-45633-00</a> Ping, cross pin	<a href="#">Buy now</a>
53	<a href="#">6H1-45641-01</a> Shifter	<a href="#">Buy now</a>
54	<a href="#">6H1-44151-00</a> Cam, shift	<a href="#">Buy now</a>
55	<a href="#">6H1-44144-00</a> Rod, shift 2	<a href="#">Buy now</a>
56	<a href="#">93210-07003</a> O-ring (11m)	<a href="#">Buy now</a>
57	<a href="#">99001-08600</a> Circlip(2r6)	<a href="#">Buy now</a>
58	<a href="#">93450-07M00</a> Circlip (6e5)	<a href="#">Buy now</a>
59	<a href="#">6H3-45571-00</a> Gear 2	<a href="#">Buy now</a>
60	<a href="#">688-45331-00-94</a> Housing, bearing	<a href="#">Buy now</a>
61	<a href="#">93306-207U0</a> Brg,r-b 6207 72mm 280g (688)	<a href="#">Buy now</a>
62	<a href="#">688-45577-01-10</a> Shim (t:0.10mm) UR	<a href="#">Buy now</a>
62	<a href="#">688-45577-01-12</a> Shim (t:0.12mm) UR	<a href="#">Buy now</a>

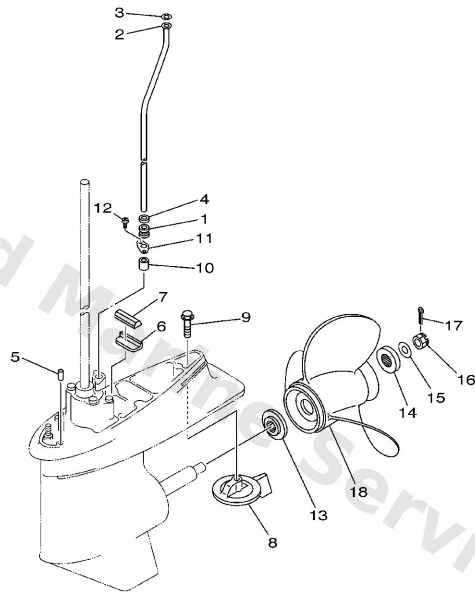
## Lower Casing. Drive 1



**E4**

Ref	Part	
62	<a href="#">688-45577-01-15</a> Shim (t:0.15mm) UR	<a href="#">Buy now</a>
62	<a href="#">688-45577-01-18</a> Shim (t:0.18mm) UR	<a href="#">Buy now</a>
62	<a href="#">688-45577-01-30</a> Shim (t:0.30mm) UR	<a href="#">Buy now</a>
62	<a href="#">688-45577-01-40</a> Shim (t:0.40mm) UR	<a href="#">Buy now</a>
62	<a href="#">688-45577-01-50</a> Shim (t:0.50mm) UR	<a href="#">Buy now</a>
63	<a href="#">688-45576-00</a> Washer, thrust 2	<a href="#">Buy now</a>
64	<a href="#">93210-85M97</a> O-ring(6h1)	<a href="#">Buy now</a>
65	<a href="#">93317-325U0</a> Brg,needle	<a href="#">Buy now</a>
67	<a href="#">90282-04010</a> Key, strait(663)	<a href="#">Buy now</a>
68	<a href="#">688-45383-02</a> Washer, claw	<a href="#">Buy now</a>
69	<a href="#">688-45384-00</a> Nut	<a href="#">Buy now</a>

## Lower Casing. Drive 2

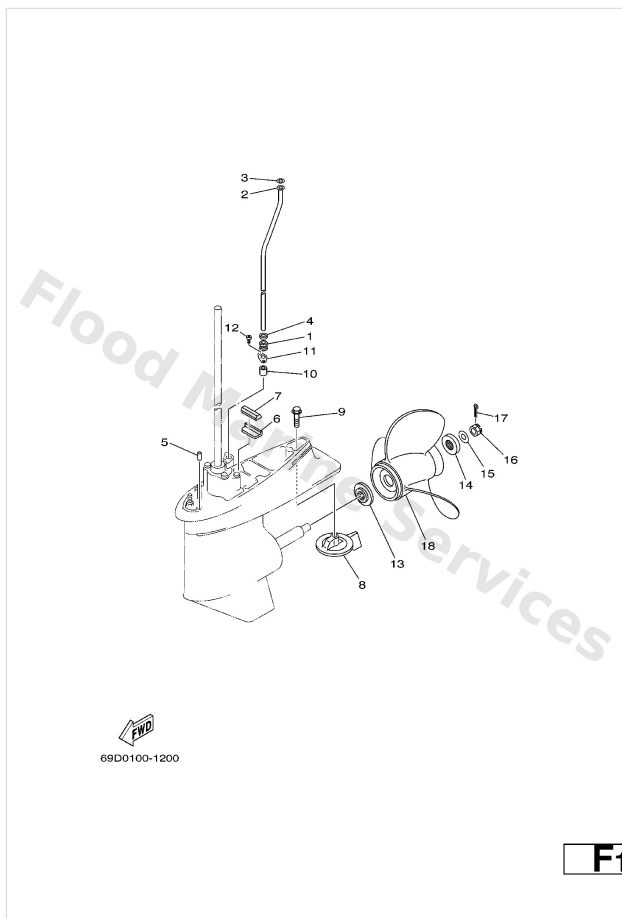


69D0100-1200

**F1**

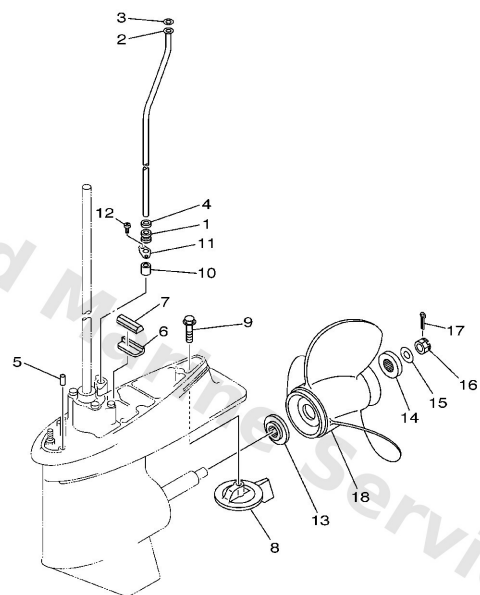
Ref	Part	
1	<a href="#">663-44367-00</a> Damper, water seal 3	<a href="#">Buy now</a>
2	<a href="#">69D-44361-10</a> Tube, water 1	<a href="#">Buy now</a>
3	<a href="#">90202-12060</a> Washer, plate(663)	<a href="#">Buy now</a>
4	<a href="#">90430-12072</a> Gasket	<a href="#">Buy now</a>
5	<a href="#">93606-12019</a> Pin, dowel (614)	<a href="#">Buy now</a>
6	<a href="#">663-45376-00-94</a> Guide, seal damper	<a href="#">Buy now</a>
7	<a href="#">688-45375-00</a> Damper, seal 2	<a href="#">Buy now</a>
8	<a href="#">688-45371-02</a> Tab-trim	<a href="#">Buy now</a>
9	<a href="#">90105-10M67</a> Bolt, hexagon (663)	<a href="#">Buy now</a>
10	<a href="#">663-44366-00</a> Damper, water seal 2	<a href="#">Buy now</a>
11	<a href="#">90480-19M06</a> Grommet (688)	<a href="#">Buy now</a>
12	<a href="#">97780-40512</a> Screw, pan head tapping	<a href="#">Buy now</a>
13	<a href="#">688-45987-01</a> Spacer	<a href="#">Buy now</a>
14	<a href="#">688-45997-01</a> Spacer 2	<a href="#">Buy now</a>
15	<a href="#">90201-17M00</a> Washer, plate(6h1)	<a href="#">Buy now</a>

## Lower Casing. Drive 2



Ref	Part	
16	<a href="#">90171-16011</a> Nut, castle (663)	<a href="#">Buy now</a>
17	<a href="#">91490-40025</a> Pin, cotter (663)	<a href="#">Buy now</a>
18	<a href="#">688-45970-03-98</a> Propeller (3x13"x19"-k) UR	<a href="#">Buy now</a>
18	<a href="#">6E5-45941-00-EL</a> Propeller (3x13x19-k) UR	<a href="#">Buy now</a>
18	<a href="#">6E5-45943-00-EL</a> Propeller (3x12-5/8"x21"-k) UR	<a href="#">Buy now</a>
18	<a href="#">6E5-45945-01-EL</a> Propeller (3x13-1/4x17-k) UR	<a href="#">Buy now</a>
18	<a href="#">6E5-45947-00-EL</a> Propeller (3x13-1/2x15-k) UR	<a href="#">Buy now</a>
18	<a href="#">6E5-45949-00-EL</a> Propeller (3x13-5/8"x13"-k) UR	<a href="#">Buy now</a>
18	<a href="#">6E5-45952-00-EL</a> Propeller (3x13"x23"-k) UR	<a href="#">Buy now</a>
18	<a href="#">6E5-45954-00-EL</a> Propeller (3x14"x11"-k) UR	<a href="#">Buy now</a>
18	<a href="#">6E5-45956-00-EL</a> Propeller (3x13"x25"-k) UR	<a href="#">Buy now</a>
18	<a href="#">688-45930-02-98</a> Propeller (3x13x17) UR	<a href="#">Buy now</a>
18	<a href="#">688-45932-60-98</a> Propeller (3x13-1/2"x14"-k) UR	<a href="#">Buy now</a>
18	<a href="#">688-45972-02-98</a> Propeller (3x13"x21"-k) UR	<a href="#">Buy now</a>
18	<a href="#">688-45974-02-98</a> Propeller (3x13"x23"-k) UR	<a href="#">Buy now</a>

Lower Casing. Drive 2

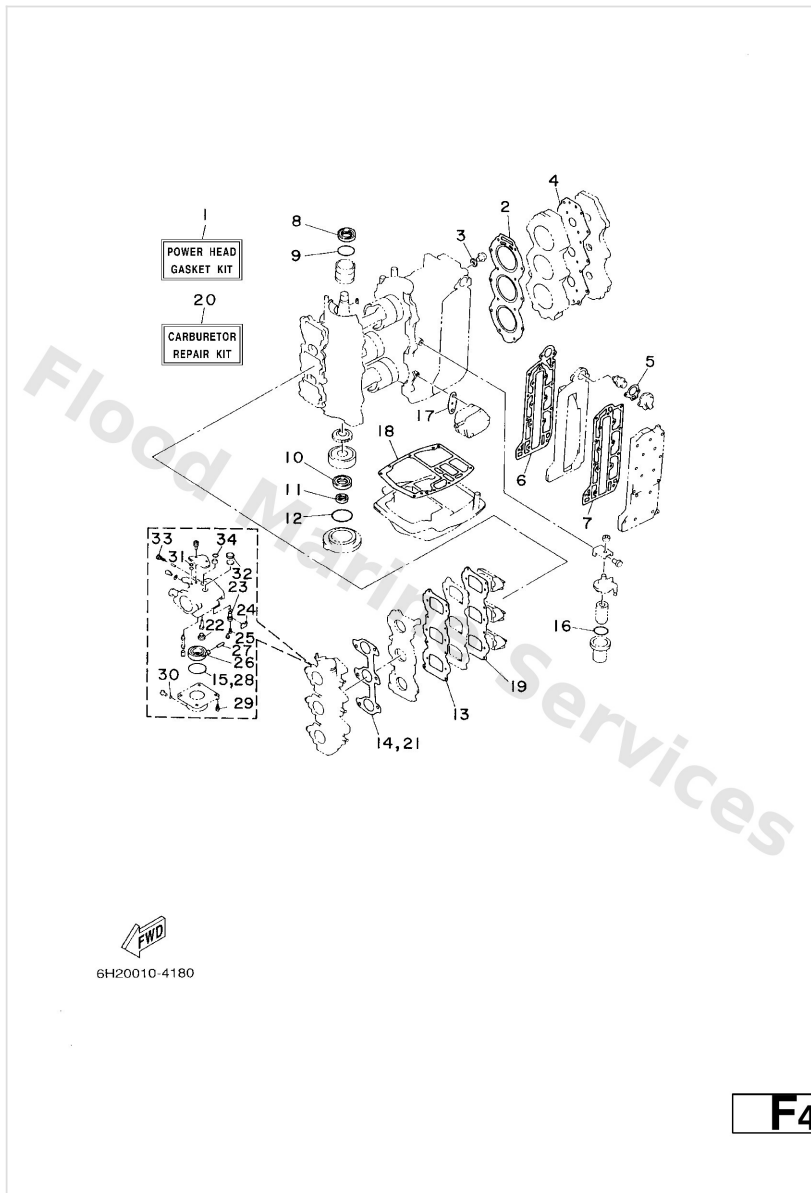


  
69D0100-1200

**F1**

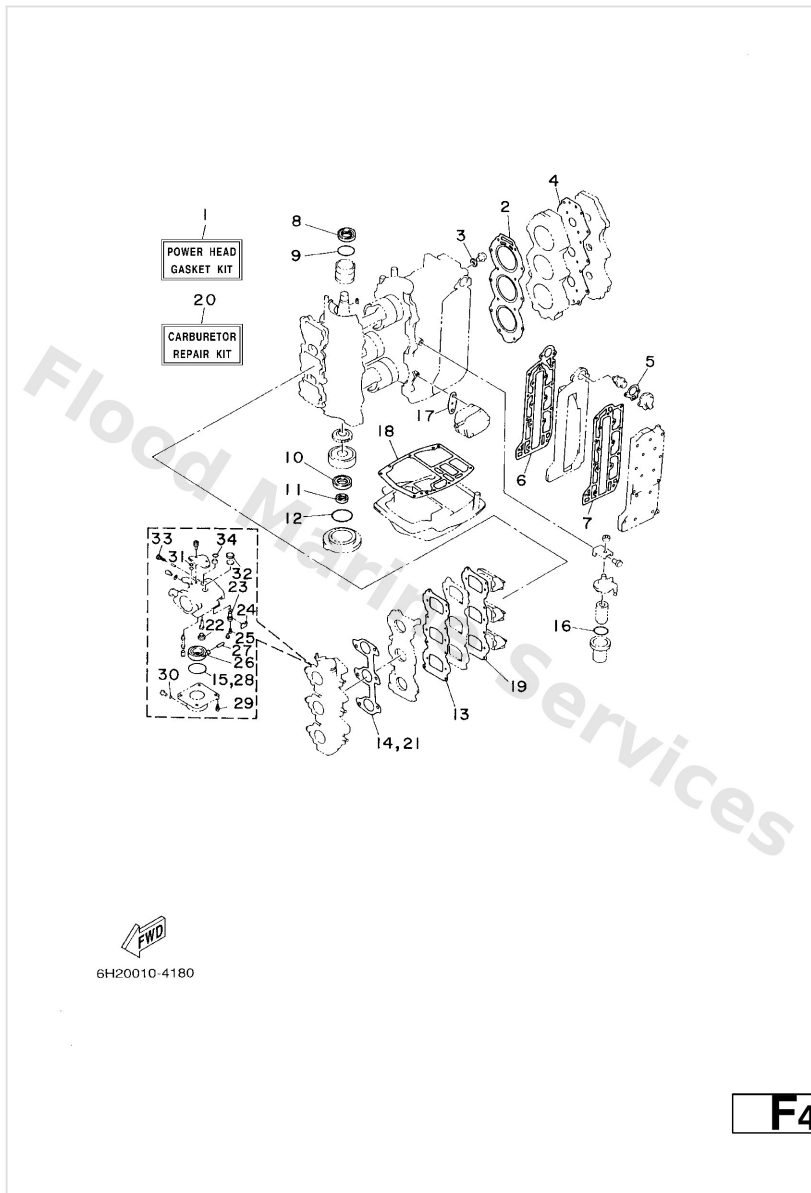
Ref	Part	
18	<a href="#">688-45976-01-98</a> Propeller (ss 3x13"x25"-k) UR	<a href="#">Buy now</a>
18	<a href="#">688-45978-60-98</a> Propeller (3x13-1/2"x16"-k) UR	<a href="#">Buy now</a>

# Repair Kit 1



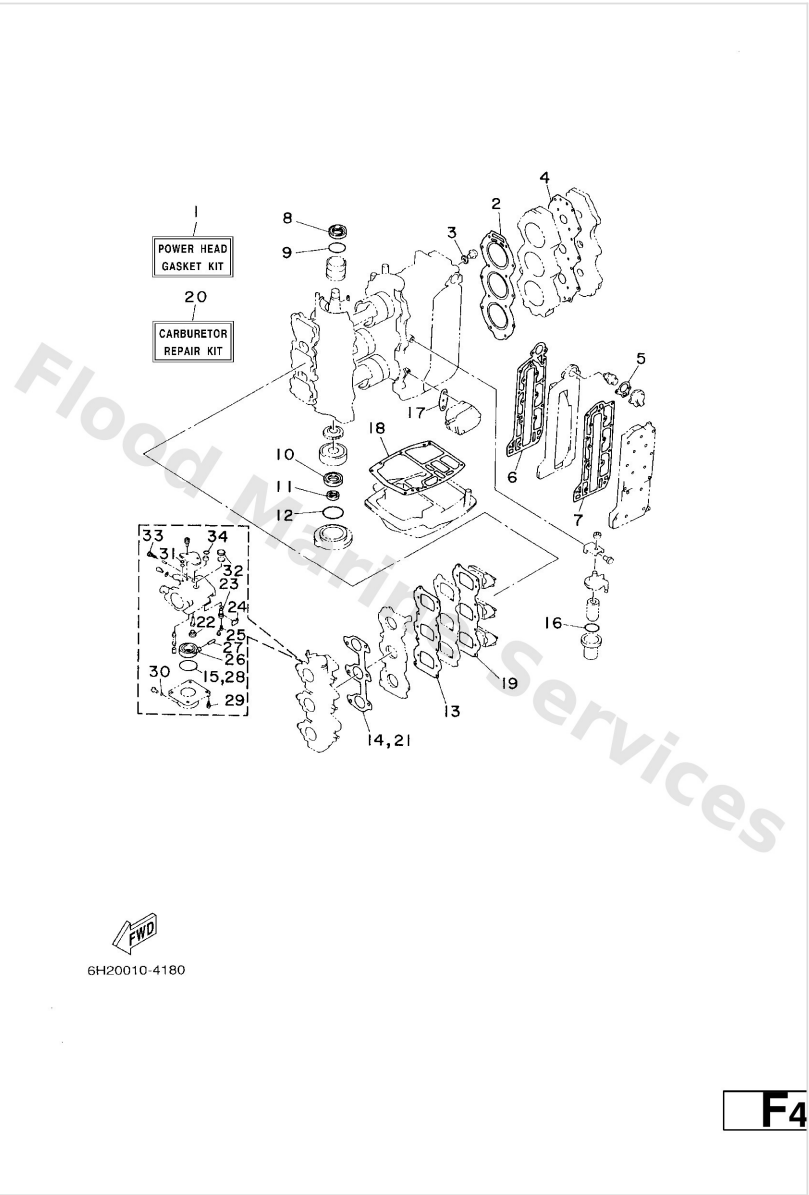
Ref	Part	
1	<a href="#">69D-W0001-00</a> Power head gasket kit	<a href="#">Buy now</a>
2	<a href="#">6H3-11181-A1</a> Gasket, cylinder head 1	<a href="#">Buy now</a>
3	<a href="#">90430-14115</a> Gasket (663)	<a href="#">Buy now</a>
4	<a href="#">6H3-11193-A1</a> Gasket, head cover 1	<a href="#">Buy now</a>
5	<a href="#">6H3-12414-A1</a> Gasket, cover	<a href="#">Buy now</a>
6	<a href="#">6H3-41112-A0</a> Gasket, exhaust inner cover	<a href="#">Buy now</a>
7	<a href="#">6H3-41114-A0</a> Gasket, exhaust outer cover	<a href="#">Buy now</a>
8	<a href="#">93102-36M24</a> Oil seal(52w)	<a href="#">Buy now</a>
9	<a href="#">93210-46M16</a> O-ring (688)	<a href="#">Buy now</a>
10	<a href="#">93102-30M23</a> Oil seal (6h3)	<a href="#">Buy now</a>
11	<a href="#">93106-18M01</a> Oil seal (6h3)	<a href="#">Buy now</a>
12	<a href="#">93210-65M50</a> O-ring	<a href="#">Buy now</a>
13	<a href="#">6H3-13621-A1</a> Gasket, valve seat	<a href="#">Buy now</a>
14	<a href="#">6H3-14198-A1</a> Gasket	<a href="#">Buy now</a>
15	<a href="#">6G1-14984-00</a> Gasket, float chamber	<a href="#">Buy now</a>

# Repair Kit 1



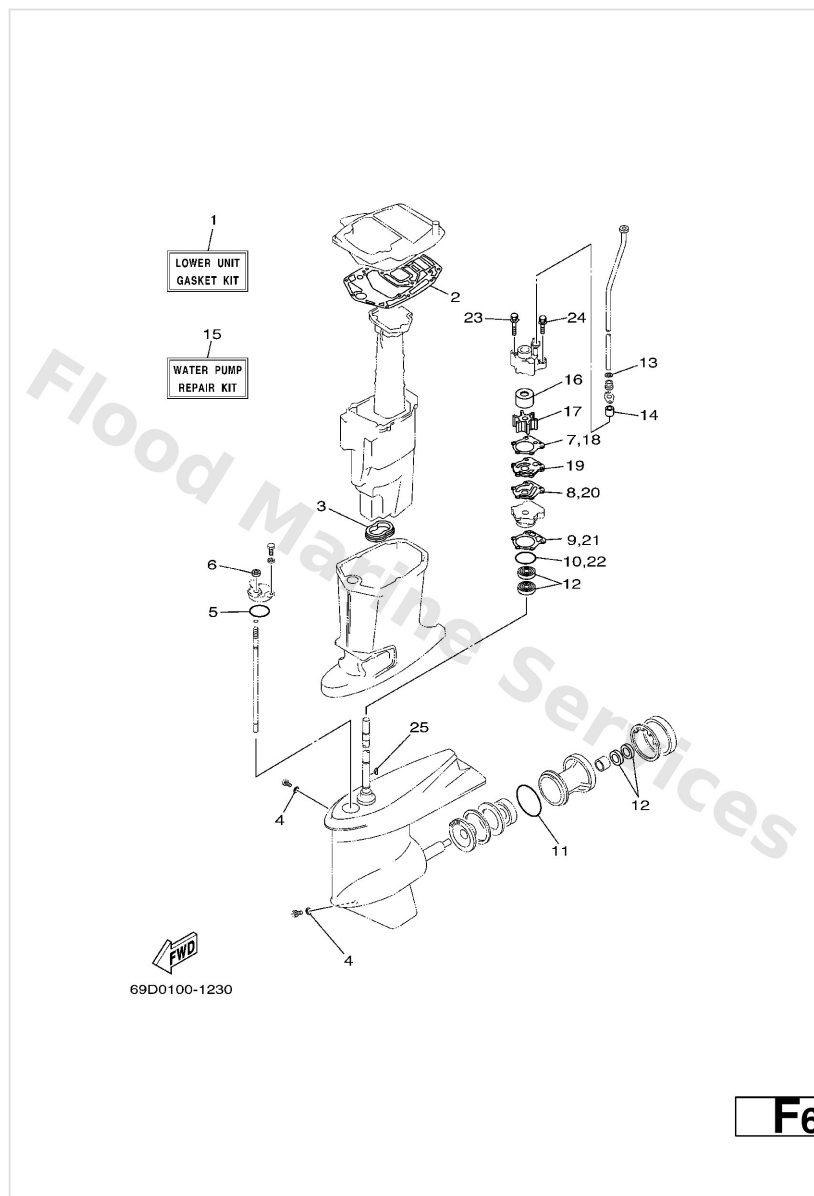
Ref	Part	
16	<a href="#">61A-24564-00</a> O-ring	<a href="#">Buy now</a>
17	<a href="#">650-24431-A0</a> Gasket, fuel pump	<a href="#">Buy now</a>
18	<a href="#">6H3-45113-A0</a> Gasket, upper casing	<a href="#">Buy now</a>
19	<a href="#">6H3-13622-A1</a> Gasket, valve seat	<a href="#">Buy now</a>
20	<a href="#">6H3-W0093-02</a> Carburetor repair kit	<a href="#">Buy now</a>
22	<a href="#">676-14966-00</a> Rubber cap	<a href="#">Buy now</a>
23	<a href="#">6H3-14590-01</a> Needle valve assembly	<a href="#">Buy now</a>
24	<a href="#">663-14159-00</a> Clip	<a href="#">Buy now</a>
25	<a href="#">676-14186-00</a> Pin, valve	<a href="#">Buy now</a>
26	<a href="#">6G1-14985-00</a> Float comp.	<a href="#">Buy now</a>
27	<a href="#">688-14548-00</a> Pin, arm	<a href="#">Buy now</a>
29	<a href="#">97980-04114</a> Screw, pan head(ga5)	<a href="#">Buy now</a>
30	<a href="#">93210-04230</a> O-ring (371)	<a href="#">Buy now</a>
31	<a href="#">663-14126-00</a> Packing	<a href="#">Buy now</a>
32	<a href="#">688-14126-00</a> Packing	<a href="#">Buy now</a>

# Repair Kit 1



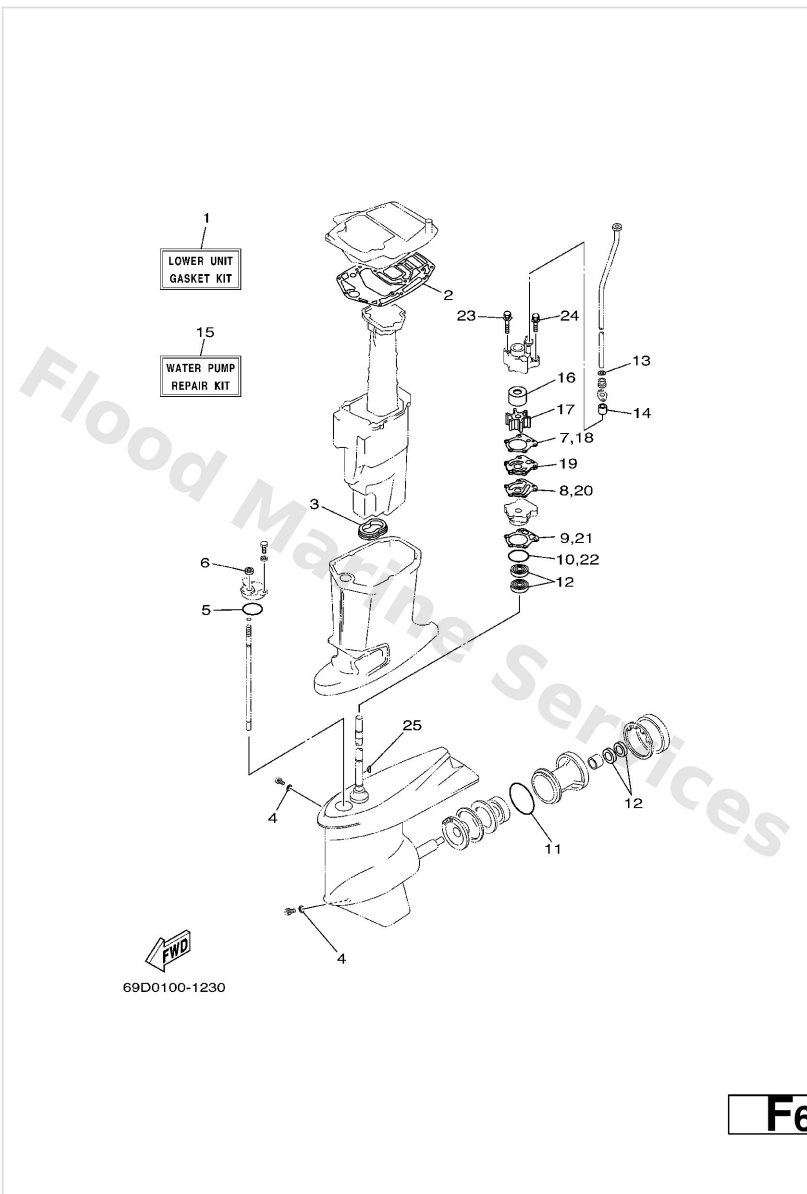
Ref	Part	
33	<a href="#">692-14923-00</a> Screw, adjusting	<a href="#">Buy now</a>
34	<a href="#">93210-15M52</a> O-ring (6e9)	<a href="#">Buy now</a>

## Repair Kit 2



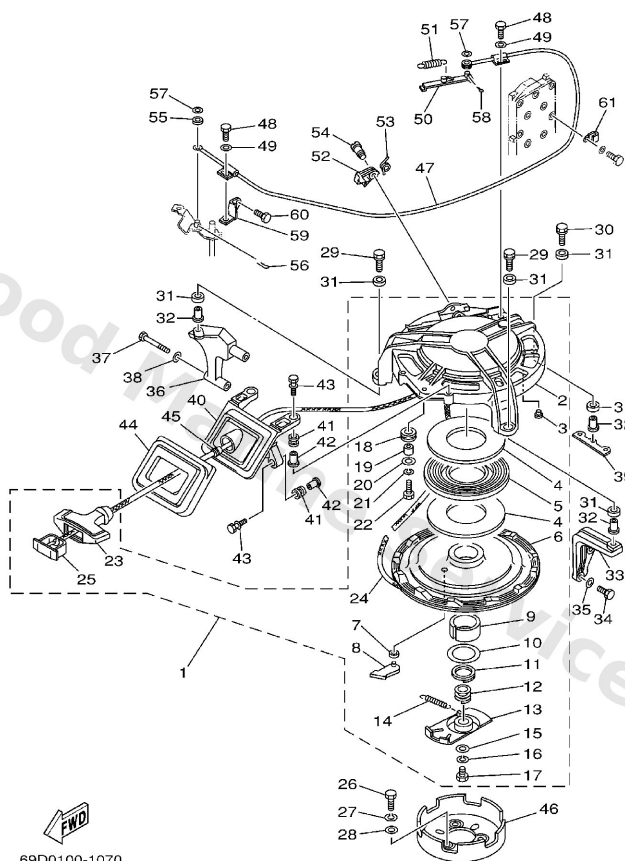
Ref	Part	
1	<a href="#">69D-W0001-20</a> Lower unit gasket kit	<a href="#">Buy now</a>
2	<a href="#">6H3-45114-A1</a> Gasket, upper casing	<a href="#">Buy now</a>
3	<a href="#">6H3-45123-00</a> Gasket, muffer	<a href="#">Buy now</a>
4	<a href="#">90430-08020</a> Gasket	<a href="#">Buy now</a>
5	<a href="#">93210-49046</a> O-ring (620)	<a href="#">Buy now</a>
6	<a href="#">93106-09014</a> Oil seal	<a href="#">Buy now</a>
7	<a href="#">688-44315-A0</a> Gasket, water pump 1	<a href="#">Buy now</a>
8	<a href="#">688-44324-A0</a> Gasket, cartridge Outer plate	<a href="#">Buy now</a>
9	<a href="#">688-44316-A0</a> Gasket, water pump 2	<a href="#">Buy now</a>
10	<a href="#">93210-46044</a> O-ring	<a href="#">Buy now</a>
11	<a href="#">93210-85M97</a> O-ring(6h1)	<a href="#">Buy now</a>
12	<a href="#">93101-25M03</a> Oil seal	<a href="#">Buy now</a>
13	<a href="#">90430-12072</a> Gasket	<a href="#">Buy now</a>
14	<a href="#">663-44366-00</a> Damper, water seal 2	<a href="#">Buy now</a>
15	<a href="#">69D-W0078-00</a> Water pump repair kit	<a href="#">Buy now</a>

## Repair Kit 2



Ref	Part	
16	<a href="#">69D-44322-00</a> Insert, cartridge	<a href="#">Buy now</a>
17	<a href="#">688-44352-03</a> Impeller	<a href="#">Buy now</a>
19	<a href="#">688-44323-40</a> Outer plate, cartridge	<a href="#">Buy now</a>
23	<a href="#">90119-08M16</a> Bolt, with washer(6h0)	<a href="#">Buy now</a>
24	<a href="#">90119-08M13</a> Bolt, with washer(6h0)	<a href="#">Buy now</a>
25	<a href="#">90280-04M04</a> Key, woodruff (688)	<a href="#">Buy now</a>

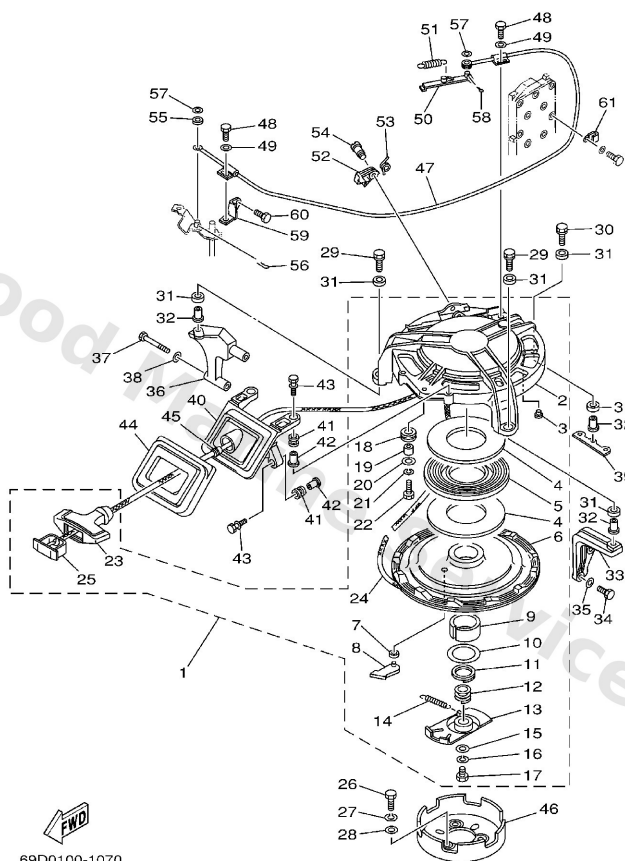
# Starter



**B6**

Ref	Part	
1	<a href="#">692-W1571-02</a> Starter assembly	<a href="#">Buy now</a>
2	<a href="#">692-15711-00</a> Case, starter	<a href="#">Buy now</a>
3	<a href="#">648-15773-00</a> Stay 3	<a href="#">Buy now</a>
4	<a href="#">663-15739-00</a> Washer, thrust 2	<a href="#">Buy now</a>
5	<a href="#">663-15713-00</a> Spring, starter	<a href="#">Buy now</a>
6	<a href="#">663-15714-01</a> Drum, sheave	<a href="#">Buy now</a>
7	<a href="#">663-15764-00</a> Collar	<a href="#">Buy now</a>
8	<a href="#">663-15741-02</a> Pawl, drive	<a href="#">Buy now</a>
9	<a href="#">663-15754-00</a> Bushing	<a href="#">Buy now</a>
10	<a href="#">663-15726-01</a> Washer, flat 1	<a href="#">Buy now</a>
11	<a href="#">663-15744-00</a> Circlip	<a href="#">Buy now</a>
12	<a href="#">663-15715-00</a> Spring, drive plate	<a href="#">Buy now</a>
13	<a href="#">663-15716-01</a> Drive, plate	<a href="#">Buy now</a>
14	<a href="#">663-15734-01</a> Spring, return	<a href="#">Buy now</a>
15	<a href="#">663-15719-00</a> Washer, thrust	<a href="#">Buy now</a>

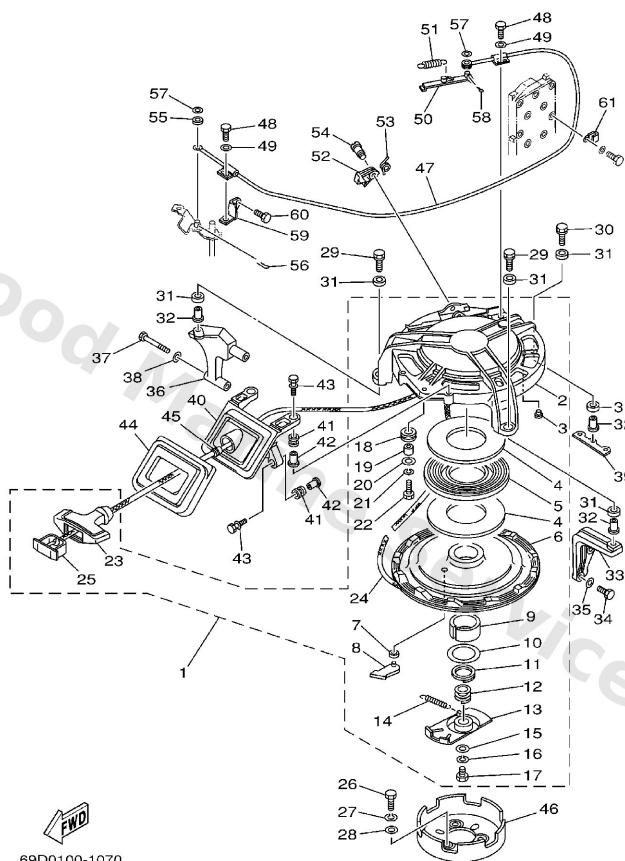
# Starter



**B6**

Ref	Part	
16	<a href="#">92903-06100</a> Washer(6a1)	<a href="#">Buy now</a>
17	<a href="#">97303-06016</a> Bolt, hexagon deep recess	<a href="#">Buy now</a>
18	<a href="#">663-15752-00</a> Roller, wire	<a href="#">Buy now</a>
19	<a href="#">663-15753-00</a> Bushing 1	<a href="#">Buy now</a>
20	<a href="#">663-15791-00</a> Washer, lock	<a href="#">Buy now</a>
22	<a href="#">97303-06025</a> Bolt, hexagon	<a href="#">Buy now</a>
23	<a href="#">689-15755-01</a> Handle, starter	<a href="#">Buy now</a>
24	* item_description	<a href="#">Buy now</a>
25	<a href="#">6F5-15779-02</a> Cover	<a href="#">Buy now</a>
26	<a href="#">97013-08012</a> Bolt(62e)	<a href="#">Buy now</a>
27	<a href="#">92903-08100</a> Ybs67-8 washer, spring	<a href="#">Buy now</a>
28	<a href="#">92903-08600</a> Washer, plain (663)	<a href="#">Buy now</a>
29	<a href="#">90119-08M28</a> Bolt, with washer	<a href="#">Buy now</a>
30	<a href="#">90119-08M32</a> Bolt, with washer	<a href="#">Buy now</a>
31	<a href="#">90385-12M04</a> Bushing (6f5)	<a href="#">Buy now</a>

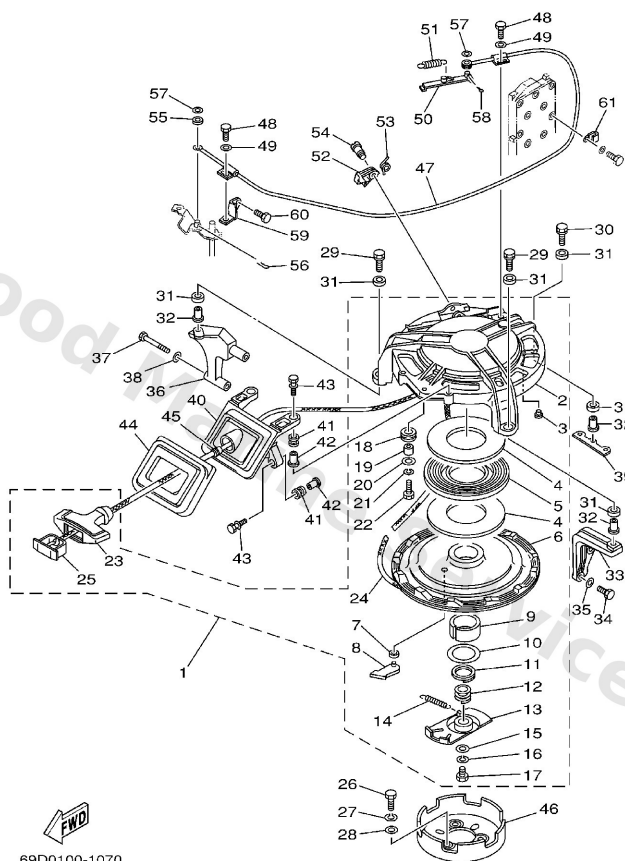
# Starter



**B6**

Ref	Part	
32	<a href="#">90387-08M05</a> Collar (663)	<a href="#">Buy now</a>
33	<a href="#">6K5-15771-00-94</a> Stay 1	<a href="#">Buy now</a>
34	<a href="#">97013-06025</a> Bolt(62y)	<a href="#">Buy now</a>
35	<a href="#">92903-06600</a> Washer, plain (646)	<a href="#">Buy now</a>
36	<a href="#">6K5-15772-00-94</a> Stay 2	<a href="#">Buy now</a>
37	<a href="#">97013-06055</a> Bolt(64d)	<a href="#">Buy now</a>
39	<a href="#">6K5-15773-01</a> Stay 3	<a href="#">Buy now</a>
40	<a href="#">6K5-15758-01-94</a> Guide wire	<a href="#">Buy now</a>
41	<a href="#">6A0-82317-00</a> Damper, ignition coil	<a href="#">Buy now</a>
42	<a href="#">624-42542-00</a> Collar	<a href="#">Buy now</a>
43	<a href="#">90119-06M65</a> Bolt, with washer	<a href="#">Buy now</a>
44	<a href="#">6K5-15762-00</a> Seal, rubber 2	<a href="#">Buy now</a>
45	<a href="#">697-15789-00</a> Damper	<a href="#">Buy now</a>
46	<a href="#">6K5-15723-00</a> Pulley, starter	<a href="#">Buy now</a>
47	<a href="#">6K5-15770-01</a> Cable comp., starter stop	<a href="#">Buy now</a>

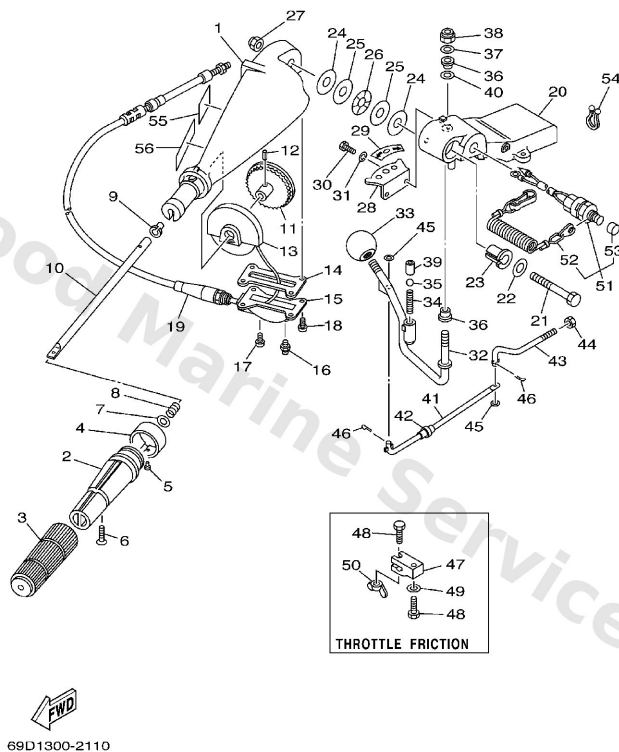
# Starter



**B6**

Ref	Part	
48	<a href="#">97095-06012</a> Bolt(gh1)	<a href="#">Buy now</a>
49	<a href="#">92995-06600</a> Washer, plain (646)	<a href="#">Buy now</a>
50	<a href="#">663-15735-01</a> Guide, cam	<a href="#">Buy now</a>
51	<a href="#">90506-08M23</a> Spring, tension(6k5)	<a href="#">Buy now</a>
52	<a href="#">663-15794-00</a> Stopper	<a href="#">Buy now</a>
53	<a href="#">90508-12015</a> Spring torsion 616436420000	<a href="#">Buy now</a>
54	<a href="#">90149-05095</a> Screw(663)	<a href="#">Buy now</a>
55	<a href="#">663-15736-00</a> Ring, retaining 1	<a href="#">Buy now</a>
56	<a href="#">90468-18008</a> Clip 620436610000	<a href="#">Buy now</a>
57	<a href="#">92903-06200</a> Ybs66-6 washer, plain	<a href="#">Buy now</a>
58	<a href="#">91490-16012</a> Pin, cotter (e57)	<a href="#">Buy now</a>
59	<a href="#">6K5-15774-00</a> Stay 4	<a href="#">Buy now</a>
60	<a href="#">97013-06012</a> Bolt(gh1)	<a href="#">Buy now</a>
61	<a href="#">90465-06M90</a> Clamp	<a href="#">Buy now</a>

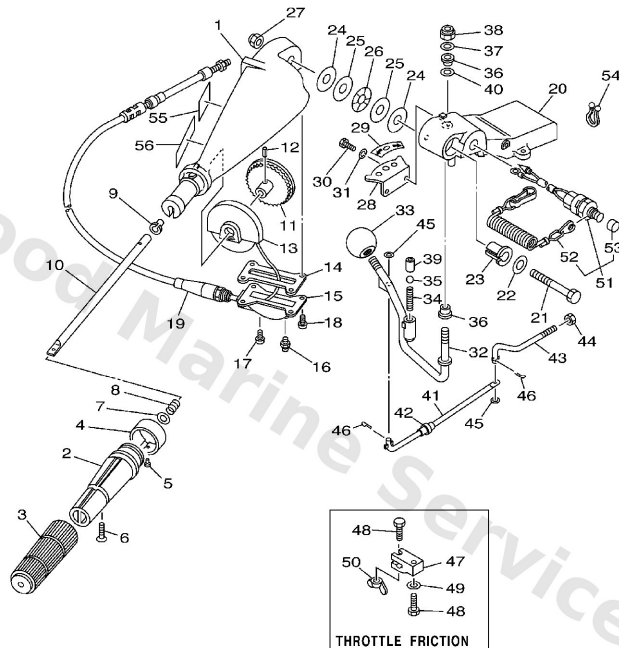
# Steering



**C7**

Ref	Part	
1	<a href="#">663-42111-02-4D</a> Handle, steering	<a href="#">Buy now</a>
2	<a href="#">664-42119-00</a> Grip, steering handle	<a href="#">Buy now</a>
3	<a href="#">6F6-42177-A0</a> Rubber, handle	<a href="#">Buy now</a>
4	<a href="#">6K5-42137-00</a> Indicator, throttle	<a href="#">Buy now</a>
5	<a href="#">90269-02M09</a> Rivet(615)	<a href="#">Buy now</a>
6	<a href="#">90149-05M13</a> Screw, countersunk	<a href="#">Buy now</a>
7	<a href="#">92903-10600</a> Washer, plate	<a href="#">Buy now</a>
8	<a href="#">90501-23215</a> Spring (655)	<a href="#">Buy now</a>
9	<a href="#">90386-08032</a> Bushing (650)	<a href="#">Buy now</a>
10	<a href="#">663-42115-00</a> Shaft, steering handle	<a href="#">Buy now</a>
11	<a href="#">663-42138-00</a> Lever, throttle	<a href="#">Buy now</a>
12	<a href="#">90254-03003</a> Pin, spring	<a href="#">Buy now</a>
13	<a href="#">663-42135-01</a> Housing, throttle lever	<a href="#">Buy now</a>
14	<a href="#">663-42133-01</a> Gasket	<a href="#">Buy now</a>
15	<a href="#">663-42134-03-94</a> Cover, throttle lever	<a href="#">Buy now</a>

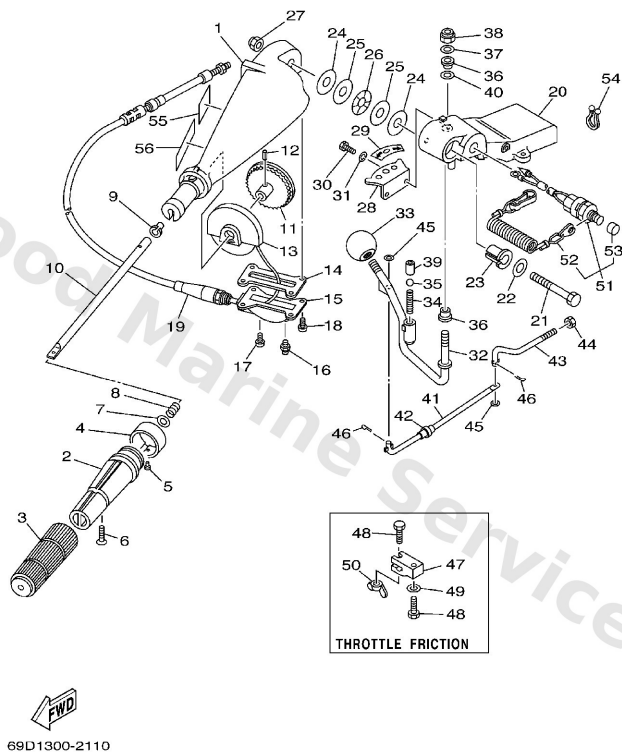
# Steering



**C7**

Ref	Part	
16	<a href="#">93700-06M03</a> Nipple, grease(6a1)	<a href="#">Buy now</a>
17	<a href="#">97885-06008</a> Screw, pan head(6a3)	<a href="#">Buy now</a>
18	<a href="#">97885-05012</a> Screw,pan head (646)	<a href="#">Buy now</a>
19	<a href="#">692-26301-03</a> Throttle cable assembly	<a href="#">Buy now</a>
20	<a href="#">692-42121-02-4D</a> Bracket	<a href="#">Buy now</a>
21	<a href="#">90101-12M06</a> Bolt	<a href="#">Buy now</a>
22	<a href="#">92990-12200</a> Ybs66-12 washer,plain	<a href="#">Buy now</a>
23	<a href="#">90386-12089</a> Bushing(663)	<a href="#">Buy now</a>
24	<a href="#">90202-12092</a> Washer, plate(663)	<a href="#">Buy now</a>
25	<a href="#">90201-12537</a> Washer, plate(663)	<a href="#">Buy now</a>
26	<a href="#">90206-12054</a> Washer, wave(663)	<a href="#">Buy now</a>
27	<a href="#">90185-12058</a> Nut, nylon(663)	<a href="#">Buy now</a>
28	<a href="#">697-44113-00</a> Cam plate, handle	<a href="#">Buy now</a>
29	<a href="#">6K5-44191-00</a> Indicator,shift	<a href="#">Buy now</a>
30	<a href="#">97013-06016</a> Bolt, hexagon deep recess	<a href="#">Buy now</a>

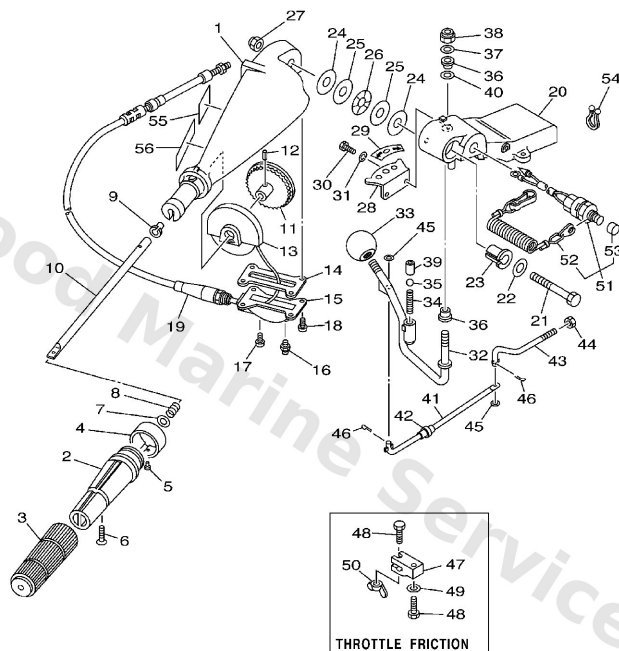
# Steering



**C7**

Ref	Part	
31	<a href="#">92903-06100</a> Washer(6a1)	<a href="#">Buy now</a>
32	<a href="#">692-44159-01</a> Handle, gear shift 2	<a href="#">Buy now</a>
33	<a href="#">663-44173-00</a> Lever, shift control	<a href="#">Buy now</a>
34	<a href="#">90501-16M17</a> Spring (697)	<a href="#">Buy now</a>
35	<a href="#">93515-32M01</a> Ball (697)	<a href="#">Buy now</a>
36	<a href="#">90386-10009</a> Bushing 6484418600	<a href="#">Buy now</a>
37	<a href="#">90201-10120</a> Washer, plate	<a href="#">Buy now</a>
38	<a href="#">90185-10051</a> Nut, self-locking	<a href="#">Buy now</a>
39	<a href="#">90387-12M30</a> Collar (697)	<a href="#">Buy now</a>
40	<a href="#">90201-12M34</a> Washer (692)	<a href="#">Buy now</a>
41	<a href="#">6H3-42191-01</a> Rod 1	<a href="#">Buy now</a>
42	<a href="#">90386-06088</a> Bushing(663)	<a href="#">Buy now</a>
43	<a href="#">6H3-42192-00</a> Rod 2	<a href="#">Buy now</a>
44	<a href="#">700-48339-00</a> Nut,cable end	<a href="#">Buy now</a>
45	<a href="#">92990-06600</a> Washer, plain (646)	<a href="#">Buy now</a>

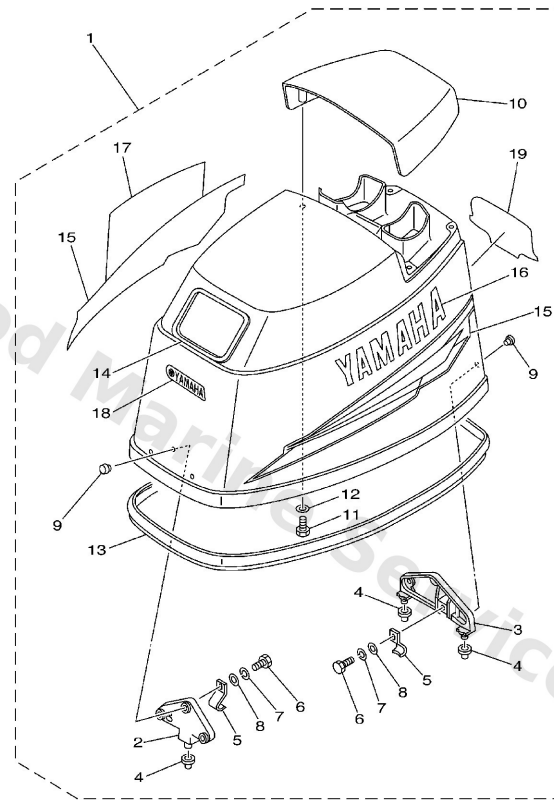
# Steering



**C7**

Ref	Part	
46	<a href="#">91490-25012</a> Pin, cotter	<a href="#">Buy now</a>
47	<a href="#">663-42126-01</a> Friction, steering handle	<a href="#">Buy now</a>
48	<a href="#">90101-06M27</a> Bolt	<a href="#">Buy now</a>
50	<a href="#">90175-06003</a> Nut, wing (f87)	<a href="#">Buy now</a>
51	<a href="#">6K5-82575-03</a> Engine stop switch assembly	<a href="#">Buy now</a>
52	<a href="#">682-82556-00</a> Lanyard, stop switch	<a href="#">Buy now</a>
53	<a href="#">689-8257Y-00</a> Cap	<a href="#">Buy now</a>
54	<a href="#">90464-08M07</a> Clamp	<a href="#">Buy now</a>
55	<a href="#">6E0-83627-51</a> Label, Caution 7	<a href="#">Buy now</a>
56	<a href="#">6E0-83627-41</a> Label, caution 7	<a href="#">Buy now</a>

## Top Cowling

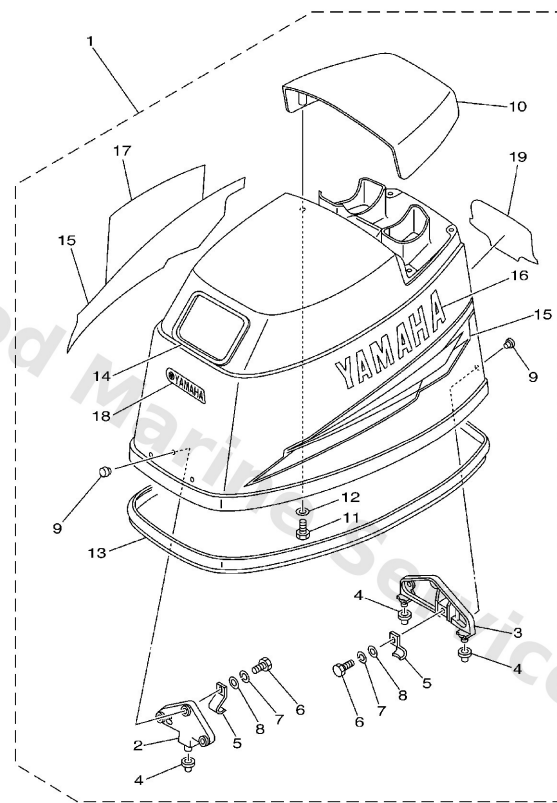


69D1300-2010

**A4**

Ref	Part	
1	<a href="#">6K5-42610-C0-4D</a> Top Cowling assembly	<a href="#">Buy now</a>
2	<a href="#">6H3-42647-00-94</a> Holder, clamp band	<a href="#">Buy now</a>
3	<a href="#">6H3-42649-00-94</a> Holder, clamp band	<a href="#">Buy now</a>
4	<a href="#">663-42662-00</a> Damper	<a href="#">Buy now</a>
5	<a href="#">6H3-42652-00</a> Hook 2	<a href="#">Buy now</a>
6	<a href="#">97095-06016</a> Bolt, hexagon deep recess	<a href="#">Buy now</a>
7	<a href="#">92995-06100</a> Washer(6a1)	<a href="#">Buy now</a>
8	<a href="#">92995-06600</a> Washer, plain (646)	<a href="#">Buy now</a>
9	<a href="#">90266-06009</a> Rivet (697)	<a href="#">Buy now</a>
10	<a href="#">6H3-42613-01-4D</a> Molding air duct	<a href="#">Buy now</a>
13	<a href="#">6H3-42615-00</a> Seal	<a href="#">Buy now</a>
14	<a href="#">6K5-15761-00</a> Seal, rubber 1	<a href="#">Buy now</a>
15	<a href="#">6H3-W0070-30</a> Graphic set	<a href="#">Buy now</a>
16	<a href="#">6H3-42681-30</a> Mark, cowling	<a href="#">Buy now</a>
17	<a href="#">6H3-42682-30</a> Mark, cowling	<a href="#">Buy now</a>

## Top Cowling

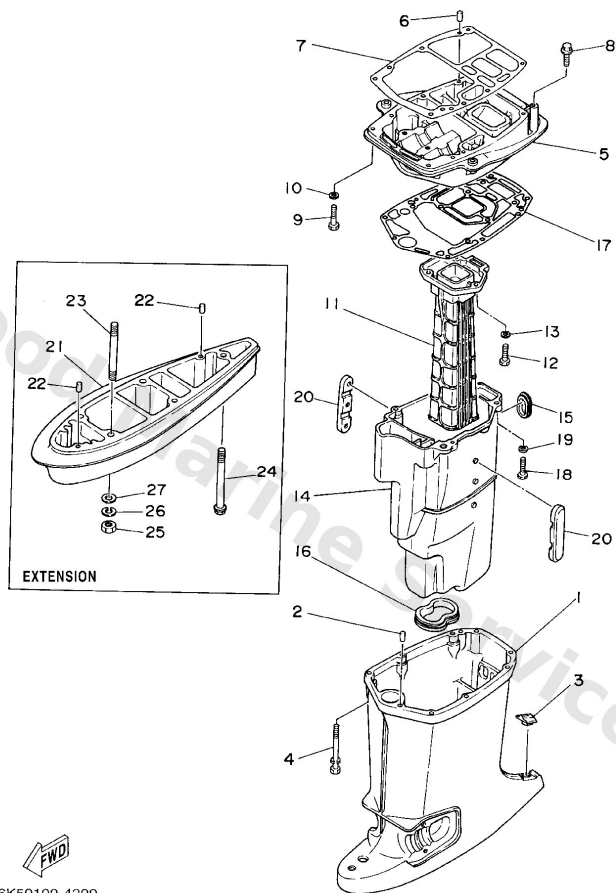


69D1300-2010

**A4**

Ref	Part	
18	<a href="#">688-42677-D0</a> Graphic, front YAMAHA	<a href="#">Buy now</a>
19	<a href="#">6H2-42678-30</a> Graphic, front	<a href="#">Buy now</a>

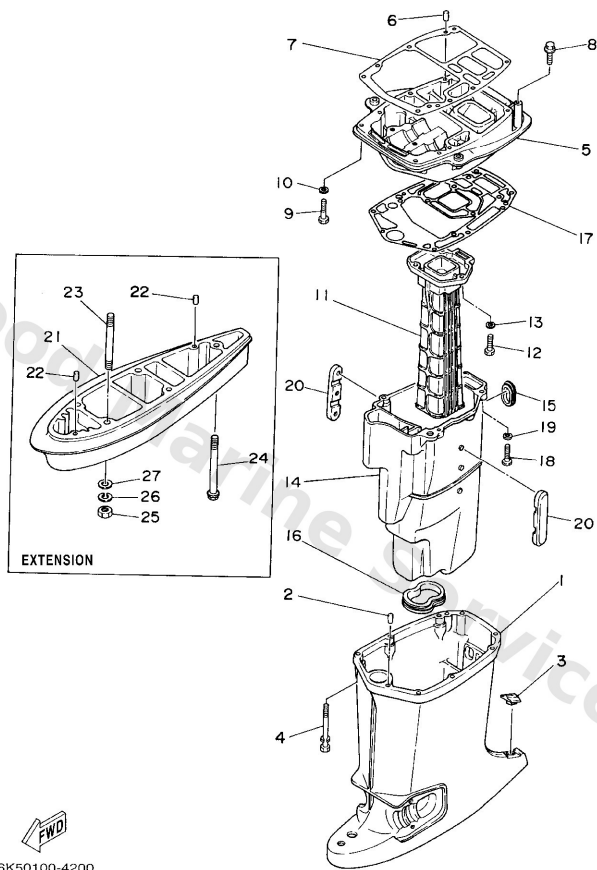
# Upper Casing



**E3**

Ref	Part	
1	<a href="#">6H3-45111-11-4D</a> Casing, upper L	<a href="#">Buy now</a>
2	<a href="#">93606-12019</a> Pin, dowel (614)	<a href="#">Buy now</a>
3	<a href="#">6H3-45155-00</a> Cap	<a href="#">Buy now</a>
4	<a href="#">90119-08M81</a> Bolt, with washer	<a href="#">Buy now</a>
5	<a href="#">6H3-41137-01-94</a> Guide, exhaust	<a href="#">Buy now</a>
7	<a href="#">6H3-45113-A0</a> Gasket, upper casing	<a href="#">Buy now</a>
8	<a href="#">90119-08M79</a> Bolt, hexagon (fj1)	<a href="#">Buy now</a>
9	<a href="#">97075-08035</a> Bolt(70w)	<a href="#">Buy now</a>
10	<a href="#">92995-08100</a> Ybs67-8 washer, spring	<a href="#">Buy now</a>
11	<a href="#">6H2-41131-00-5B</a> Manifold, ext. 1	<a href="#">Buy now</a>
12	<a href="#">97075-08030</a> Bolt, hexagon (fj1)	<a href="#">Buy now</a>
14	<a href="#">6H3-14711-10-5B</a> Muffler 1 L	<a href="#">Buy now</a>
15	<a href="#">6H3-45127-00</a> Seal 1	<a href="#">Buy now</a>
16	<a href="#">6H3-45123-00</a> Gasket, muffler	<a href="#">Buy now</a>
17	<a href="#">6H3-45114-A1</a> Gasket, upper casing	<a href="#">Buy now</a>

# Upper Casing



E3

Ref	Part	
20	<a href="#">6H3-14737-10</a> Damper, muffler L	<a href="#">Buy now</a>
21	<a href="#">696-45211-01-4D</a> Extension	<a href="#">Buy now</a>
23	<a href="#">90116-10M31</a> Bolt, stud(6a3)	<a href="#">Buy now</a>
24	<a href="#">90119-08M85</a> Bolt, with washer	<a href="#">Buy now</a>
25	<a href="#">95380-10600</a> Nut(624)	<a href="#">Buy now</a>
26	<a href="#">92990-10100</a> Ybs67-10 washer, spring	<a href="#">Buy now</a>
27	<a href="#">92990-10600</a> Washer, plate	<a href="#">Buy now</a>

# Disclaimer

This document is provided for convenience only. It is **not** an official Yamaha publication and is **not supplied, endorsed, or approved** by Yamaha Motor Co., Ltd.

Reasonable efforts are made to keep information accurate; however diagrams, part references, supersessions, descriptions, and applicability may contain errors or omissions. Specifications and part availability may change without notice.

You are responsible for confirming the correct parts for your engine (including model code, year, serial range, and any superseded part numbers) before ordering or fitting.