



Yamaha F4AMH 2000

Parts Manual

www.floodmarine.co.uk

+44 2882 246 539

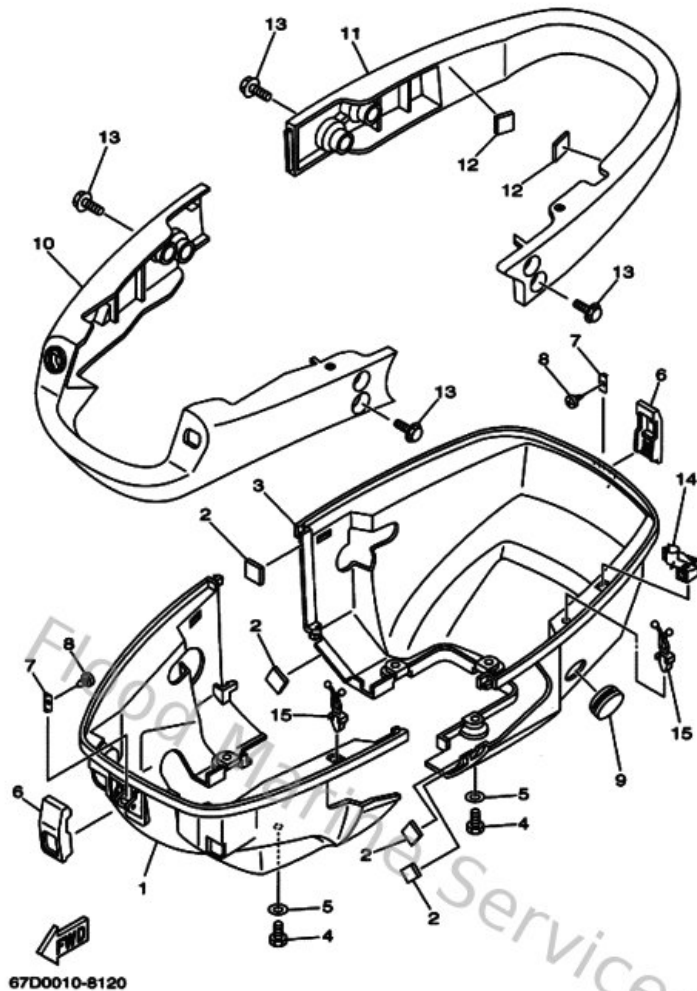
Authorised Yamaha Dealers



Contents

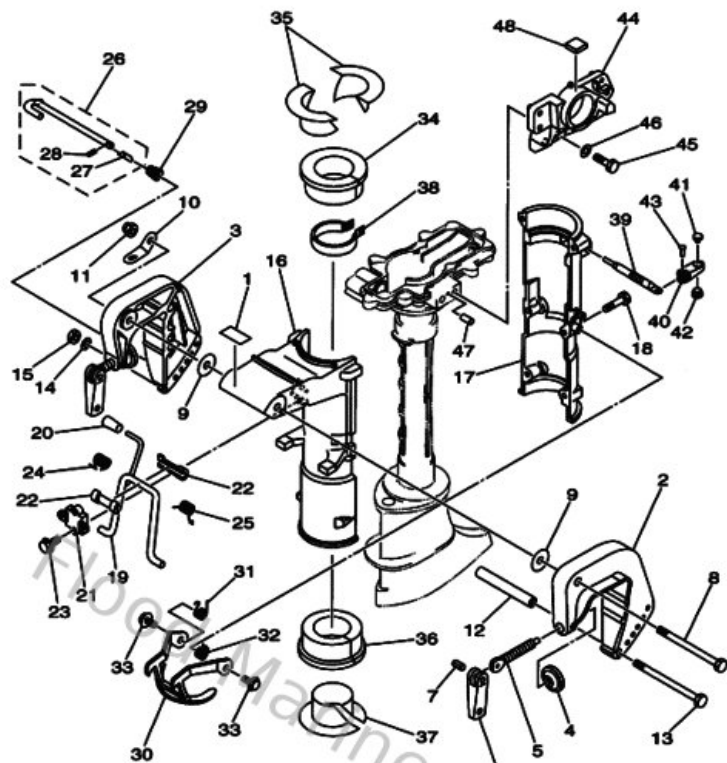
| | |
|-----------------------------------|----|
| Bottom Cowling | 3 |
| Bracket 1 | 4 |
| Carburetor | 8 |
| Control | 10 |
| Crankshaft & Piston | 11 |
| Cylinder & Crankcase | 12 |
| Cylinder & Crankcase 2 | 14 |
| Fuel | 16 |
| Fuel 2 | 17 |
| Generator | 20 |
| Intake | 21 |
| Lower Casing & Drive 1 | 22 |
| Lower Casing & Drive 2 | 25 |
| Repair Kit 1 | 26 |
| Repair Kit 2 | 28 |
| Starter | 29 |
| Steering | 31 |
| Top Cowling | 33 |
| Upper Casing | 34 |
| Valve | 35 |

Bottom Cowling



| Ref | Part | |
|-----|---|-------------------------|
| 1 | 67D427110000 Cowling, Bottom 1 | Buy now |
| 2 | 67D426620000 Damper | Buy now |
| 4 | 970950601600 Bolt, hexagon deep recess | Buy now |
| 5 | 929950660000 Washer, plain (646) | Buy now |
| 6 | 6L5426470000 Holder, clamp band | Buy now |
| 7 | 6L5428230000 Plate, stop | Buy now |
| 8 | 9016703M0200 Screw, tapping(6I5) | Buy now |
| 9 | 9048022M7200 Grommet | Buy now |
| 10 | 67D427310000 Carring, handle | Buy now |
| 11 | 67D427350000 Protector | Buy now |
| 13 | 9011906M7900 Bolt, with washer | Buy now |
| 14 | 9046407M5000 Clamp | Buy now |
| 15 | 904640707800 Clamp(81k) | Buy now |

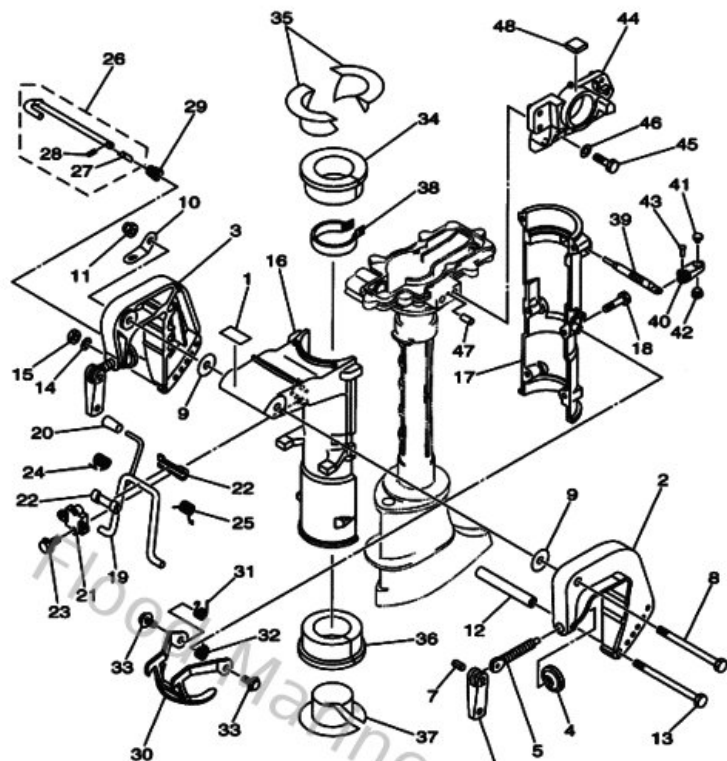
Bracket 1



67D0010-8150

| Ref | Part | |
|-----|--|-------------------------|
| 1 | 67D245910100 Emblem, Fuel Cock | Buy now |
| 2 | 6E043111024D Bracket, clamp 1 | Buy now |
| 3 | 6E043112014D Bracket, clamp 2 | Buy now |
| 4 | 620431140000 Pad, transom clamp | Buy now |
| 5 | 6E0431160100 Screw, transom clamp | Buy now |
| 6 | 6EEG31180000 Handle, transom cl | Buy now |
| 7 | 9024304M0100 Pin(6a1) | Buy now |
| 8 | 9010108M0700 Bolt(6e0) | Buy now |
| 9 | 9020208M5800 Washer, plate | Buy now |
| 10 | 6A1431130100 Plate, clamp bracket | Buy now |
| 11 | 901850805700 Nut, nylon (6j8) | Buy now |
| 12 | 6EEG31220000 Collar | Buy now |
| 13 | 901010633500 Bolt, hexagon (624) | Buy now |
| 14 | 929900660000 Washer, plain (646) | Buy now |
| 15 | 953800660000 Nut(661) | Buy now |

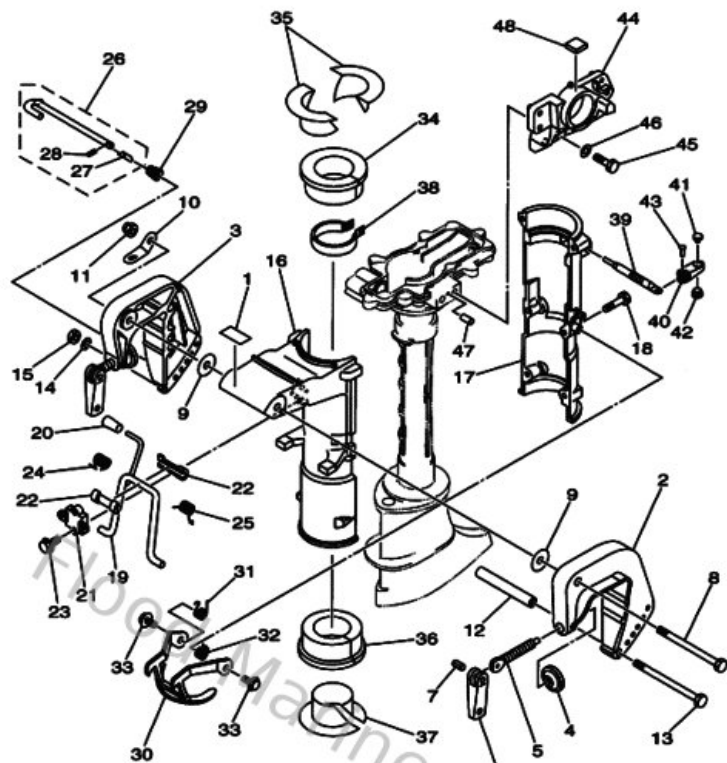
Bracket 1



67D0010-8150

| Ref | Part | |
|-----|--|-------------------------|
| 16 | 67D43311004D Bracket, swivel 1 | Buy now |
| 17 | 6EEG3312008D Bracket, swivel 2 | Buy now |
| 18 | 958950603500 Bolt, flange(4nx) | Buy now |
| 19 | 6E0431810000 Lever, tilt stop 1 | Buy now |
| 20 | 6E0436320000 Knob, tilt | Buy now |
| 21 | 6E0433130094 Bracket, swivel 3 | Buy now |
| 22 | 620431890000 Bushing | Buy now |
| 23 | 958800602000 Bolt, flange(jk3) | Buy now |
| 24 | 905081602000 Spring 6474319800 | Buy now |
| 25 | 905081602100 Spring 6474318800 | Buy now |
| 26 | 6E0431600100 Tilt rod assembly | Buy now |
| 27 | 689431650000 Plate, tilt lock | Buy now |
| 28 | 916903000800 Pin. spring(656) | Buy now |
| 29 | 9050208M0500 Spring, conical(6e0) | Buy now |
| 30 | 6E04361400CA Plate, tilt lock | Buy now |

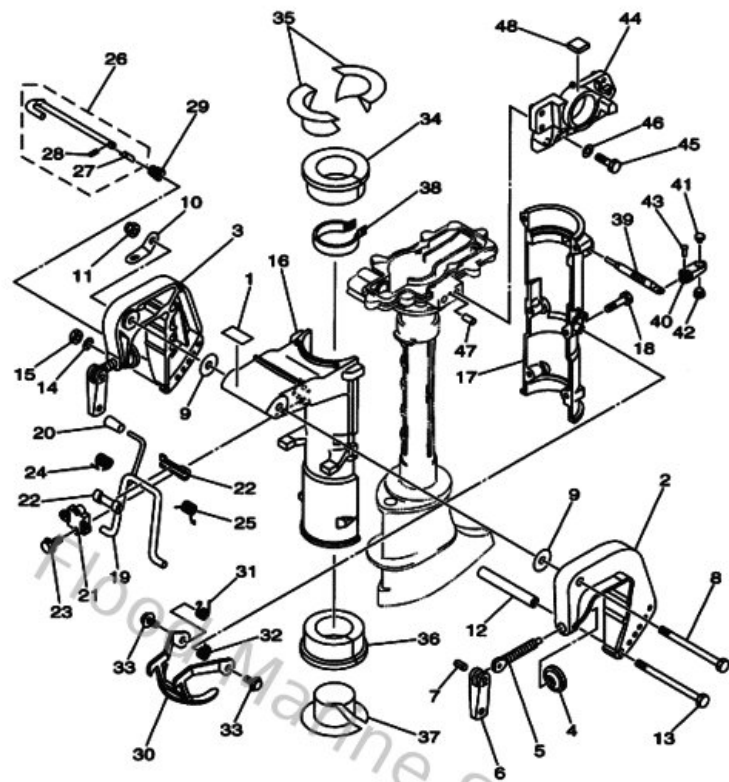
Bracket 1



67D0010-8150

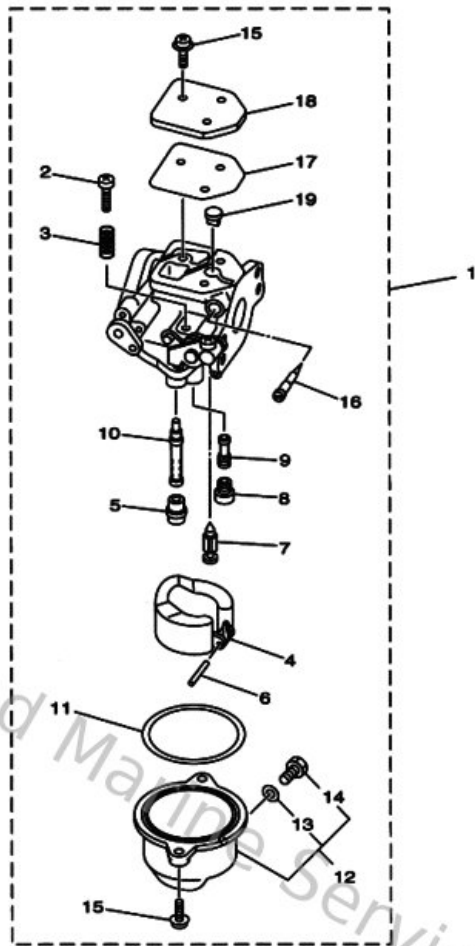
| Ref | Part | |
|-----|---|-------------------------|
| 31 | 9050814M1000 Spring, torsion (6e0) | Buy now |
| 32 | 9050814M1100 Spring, torsion (6e0) | Buy now |
| 33 | 958950601000 Bolt, flange(7ht) | Buy now |
| 34 | 6EEG25370000 Bushing, pivot sha | Buy now |
| 35 | 67D425390000 Bushing, pivot sha | Buy now |
| 36 | 68DG25380000 Bush Pivot Shaft 2 | Buy now |
| 37 | 68DG25490000 Bush, pivot shaft 4 | Buy now |
| 38 | 6E0425280300 Plate, friction | Buy now |
| 39 | 6L5425290100 Screw, friction piece | Buy now |
| 40 | 6L5425610000 Knob, steering lock | Buy now |
| 41 | 6L5441960000 Indicator 3 | Buy now |
| 42 | 6L5441970000 Indicator 4 | Buy now |
| 43 | 9026604M0500 Rivet(6I5) | Buy now |
| 44 | 68DG2511004D Bracket, Steering | Buy now |
| 45 | 970750803000 Bolt, hexagon (fj1) | Buy now |

Bracket 1



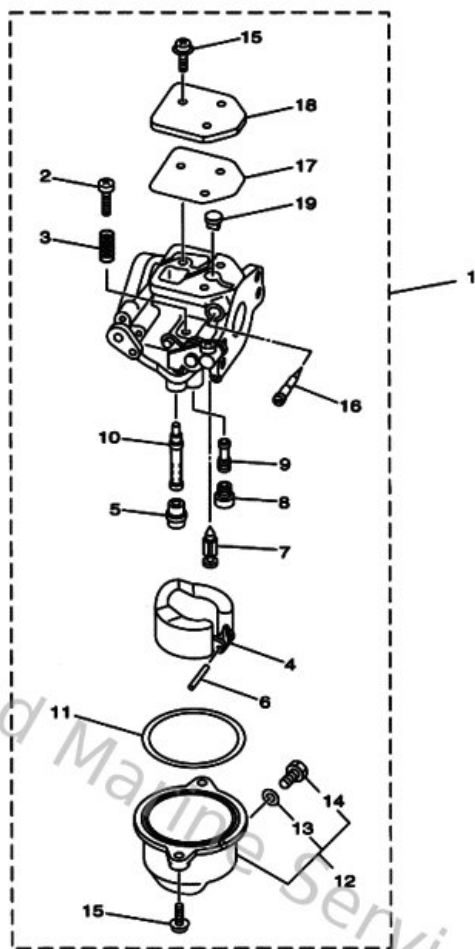
| Ref | Part | |
|-----|---|-------------------------|
| 46 | 929950860000 Washer, plain (663) | Buy now |
| 47 | 9360412M0700 Pin, dowel (688) | Buy now |
| 48 | 67D426620000 Damper | Buy now |

Carburetor



| Ref | Part | |
|-----|---|-------------------------|
| 1 | 67D143010100 Carburetor assembly 1 | Buy now |
| 2 | 6E5143210000 Screw, throttle | Buy now |
| 3 | 6J8143340000 Spring, throttle | Buy now |
| 4 | 68T143850000 Float | Buy now |
| 5 | 67D149660000 Rubber cap | Buy now |
| 6 | 67D143860000 Pin, float | Buy now |
| 7 | 67D145460000 Valve, needle | Buy now |
| 8 | 67D1492E3400 Jet, main (#68) | Buy now |
| 9 | 67D1492F1800 Jet, air slow (#36) | Buy now |
| 10 | 67D1492A0000 Nozzle, main | Buy now |
| 11 | 67D149840000 Gasket, float chamber | Buy now |
| 12 | 67D149810000 Body, float chamber | Buy now |
| 13 | 6J8149590000 Gasket, drain screw | Buy now |
| 14 | 66T149910000 Plug, drain | Buy now |
| 15 | 985800401200 Screw, pan head (686) | Buy now |

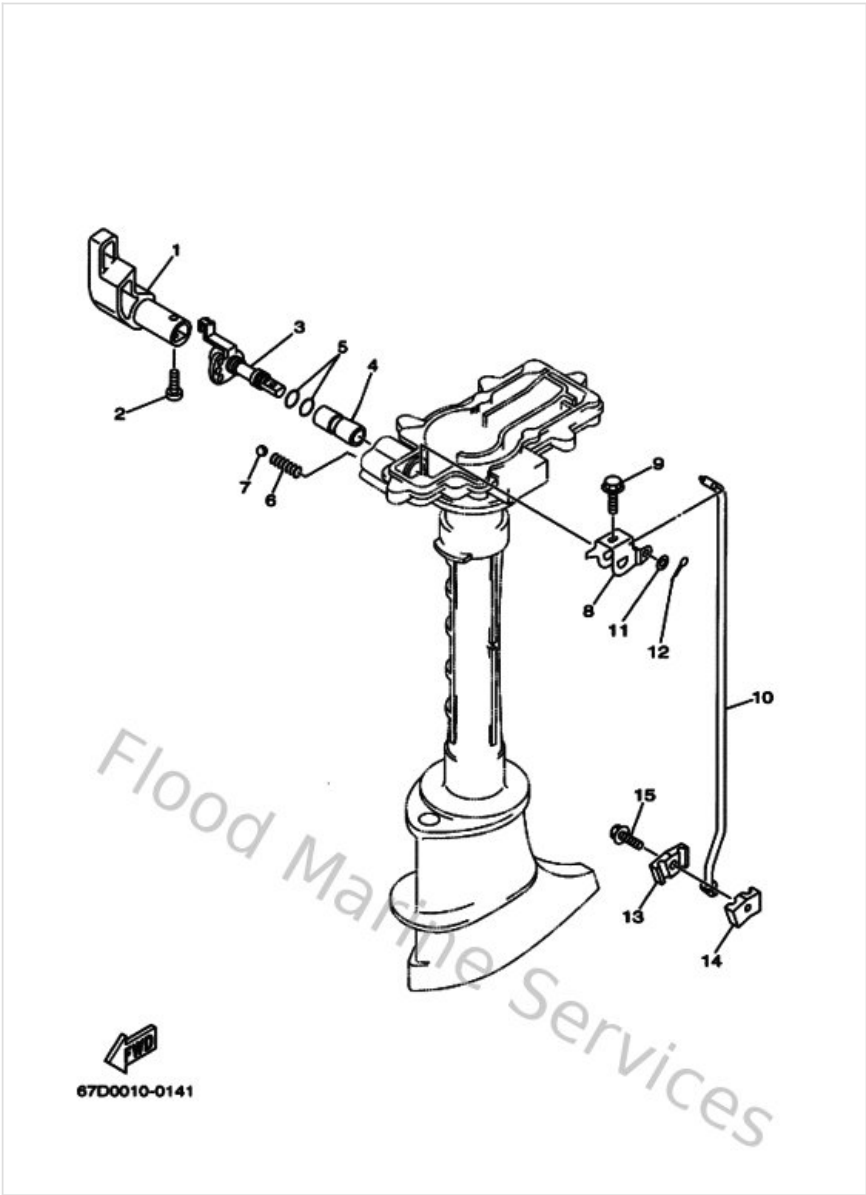
Carburetor



67D0010-8070

| Ref | Part | |
|-----|--|-------------------------|
| 16 | 67D143230000 Screw, air adjusting | Buy now |
| 17 | 67D145360000 Gasket | Buy now |
| 18 | 67D145270000 Plate | Buy now |
| 19 | 67D141260000 Plug | Buy now |

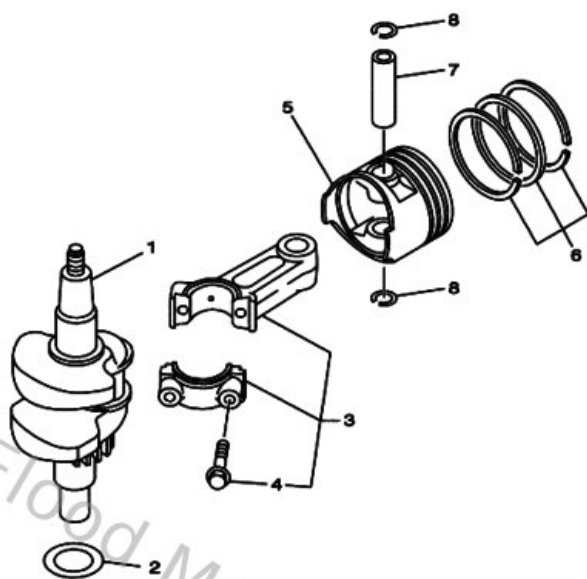
Control



67D0010-0141

| Ref | Part | |
|-----|---|-------------------------|
| 1 | 67D441110000 Handle, gear shift | Buy now |
| 2 | 986800552000 Ybs53-520 screw,flat head | Buy now |
| 3 | 67D44119019M Shaft Change | Buy now |
| 4 | 68DG41220100 Bushing, shift rod lever | Buy now |
| 5 | 932100935000 O-ring | Buy now |
| 6 | 905011227400 Spring 6554411600 | Buy now |
| 7 | 935051602400 Ball | Buy now |
| 8 | 68DG41210000 Lever Shift Rod 1 | Buy now |
| 9 | 9011905M0400 Bolt, with washer | Buy now |
| 10 | 67D441430000 Rod Shift | Buy now |
| 11 | 929900560000 Washer, plain (646) | Buy now |
| 12 | 914901601000 Pin, cotter | Buy now |
| 13 | 68DG41450000 Connector, shift rod 1 | Buy now |
| 14 | 67D441460000 Connector, shift rod 2 | Buy now |
| 15 | 958950602000 Bolt, flange(jk3) | Buy now |

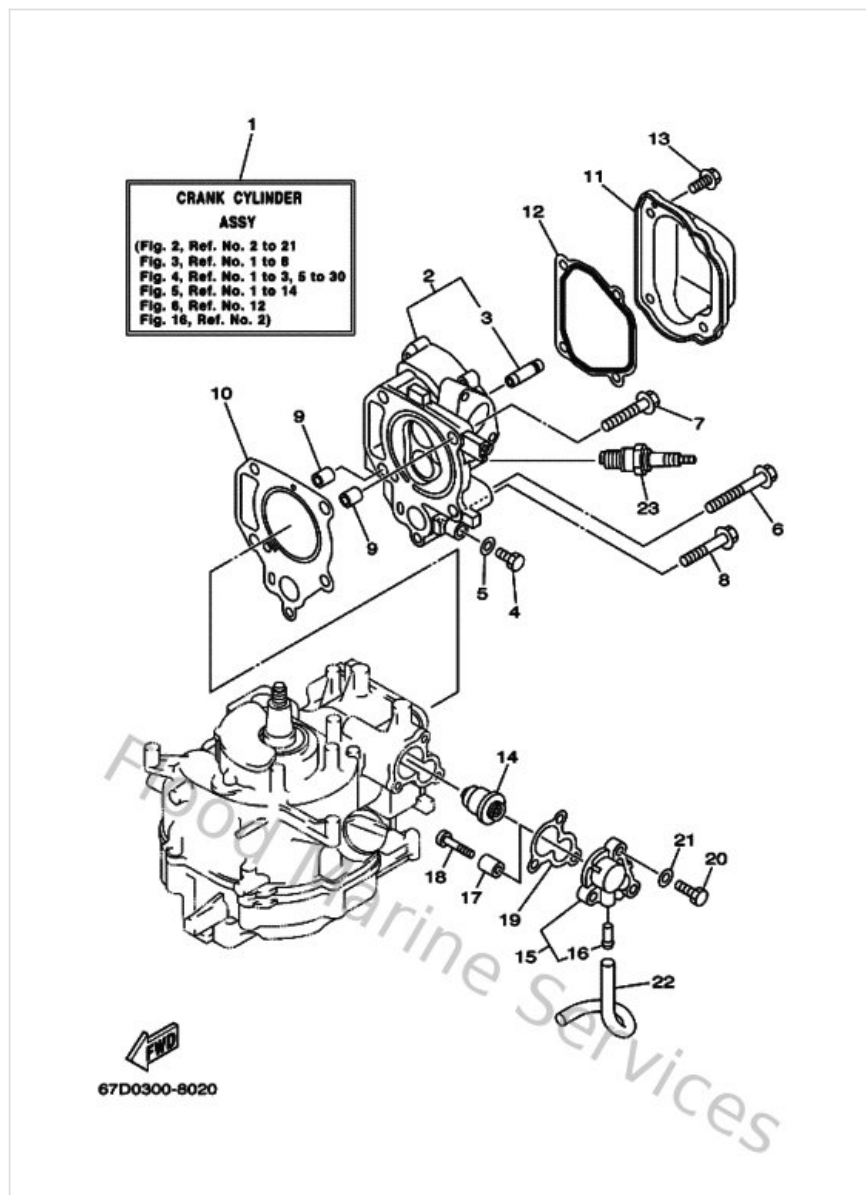
Crankshaft & Piston



67D0010-8030

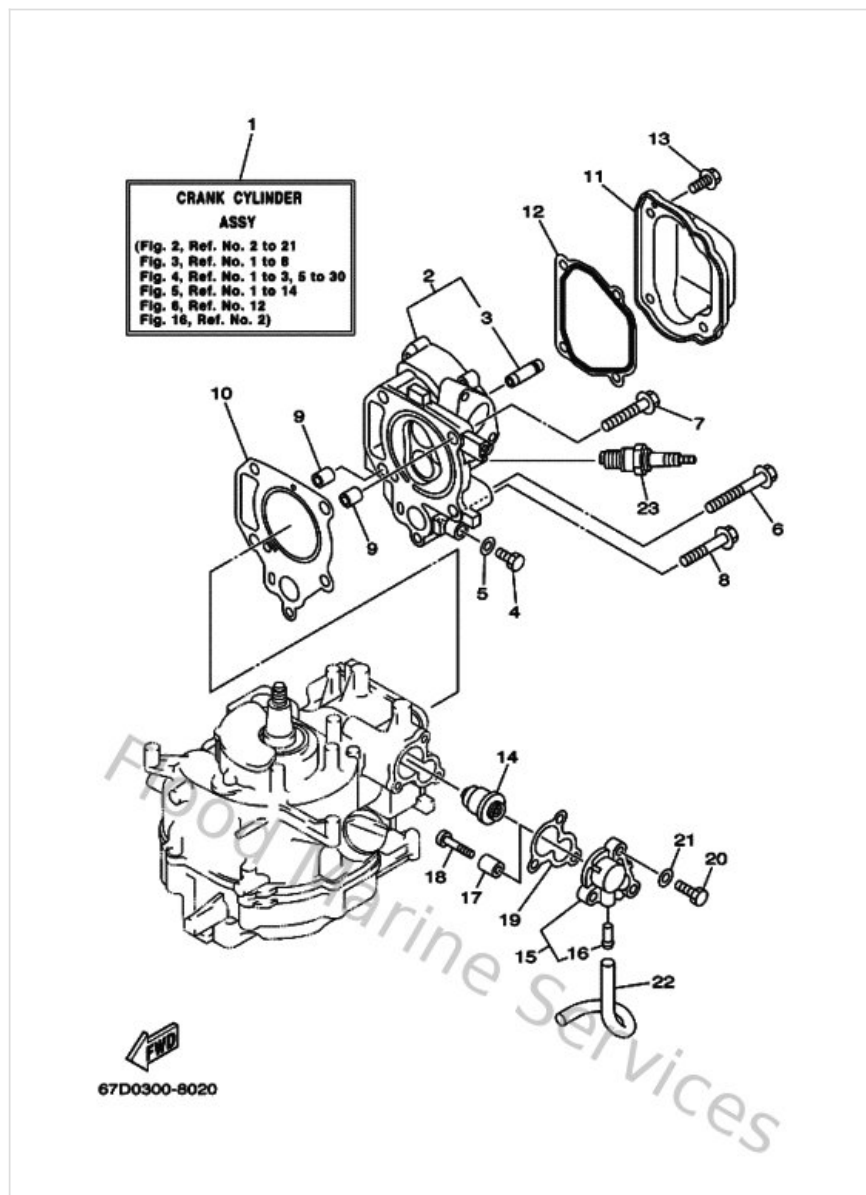
| Ref | Part | |
|-----|--|-------------------------|
| 1 | 67D114000000 Crankshaft assembly | Buy now |
| 2 | 90201266P200 Washer, plate(ja8) | Buy now |
| 3 | 67D116500000 Connecting rod kit | Buy now |
| 4 | 67D116540000 Bolt, connecting rod | Buy now |
| 5 | 67D116360000 Piston (0.50Mm O/s) | Buy now |
| 6 | 67D116030000 Piston ring (set) | Buy now |
| 7 | 67D116330000 Pin, Piston | Buy now |
| 8 | 934501408800 Circlip (22f) | Buy now |

Cylinder & Crankcase



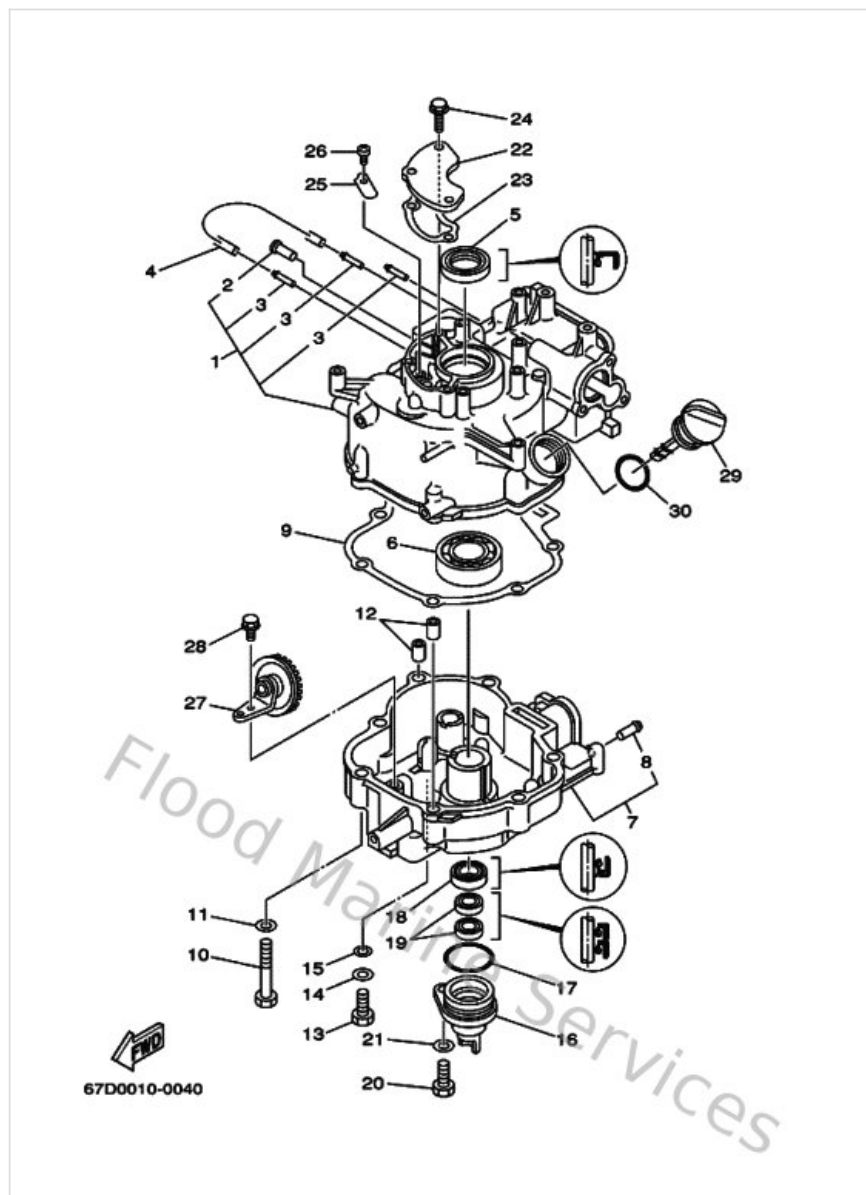
| Ref | Part | |
|-----|---|-------------------------|
| 1 | 67DW0090011S Crank Cylinder assembly | Buy now |
| 2 | 67D111110094 Head Cylinder (F4) | Buy now |
| 3 | 6EEE11331000 Guide, valve 1 | Buy now |
| 4 | 970950801400 Bolt, hexagon deep recess | Buy now |
| 5 | 904300814300 Gasket (256-11198-00) | Buy now |
| 6 | 9010508M8100 Bolt, Flange | Buy now |
| 7 | 9010508M8000 Bolt, Flange | Buy now |
| 8 | 9010506M2500 Bolt (6g1) | Buy now |
| 9 | 995101011400 Pin, dowel(3vd) | Buy now |
| 10 | 67D11181A000 Gasket, cylinder head 1 | Buy now |
| 11 | 67D111910000 Cover, cylinder head 1 | Buy now |
| 12 | 67D11193A000 Gasket head cover | Buy now |
| 13 | 9010506M1400 Bolt (6e0) | Buy now |
| 14 | 66M124110100 Thermostat | Buy now |
| 15 | 67D12413001S Cover, thermostat | Buy now |

Cylinder & Crankcase



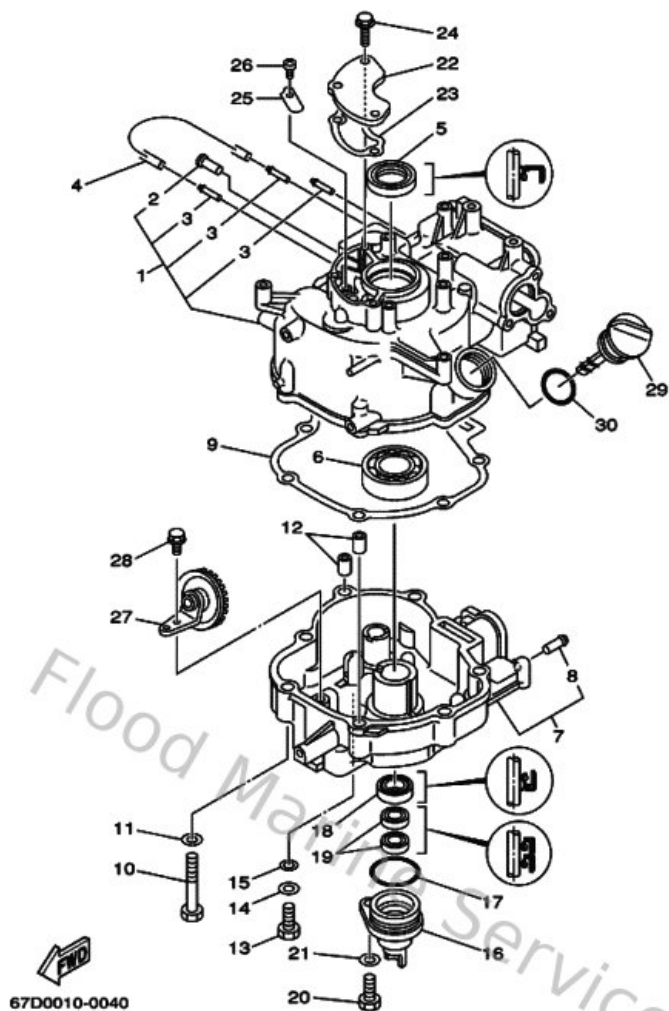
| Ref | Part | |
|-----|--|-------------------------|
| 16 | 650243780000 Pipe, joint 2 | Buy now |
| 17 | 6G8113250000 Anode | Buy now |
| 18 | 978800502500 Screw, panhead (a93) | Buy now |
| 19 | 67D12414A000 Gasket, cover | Buy now |
| 20 | 970950602000 Bolt(7u8) | Buy now |
| 21 | 929950660000 Washer, plain (646) | Buy now |
| 22 | 9044509M0000 Hose (I180) | Buy now |
| 23 | 947020024800 Plug, spark (br6hs) | Buy now |

Cylinder & Crankcase 2



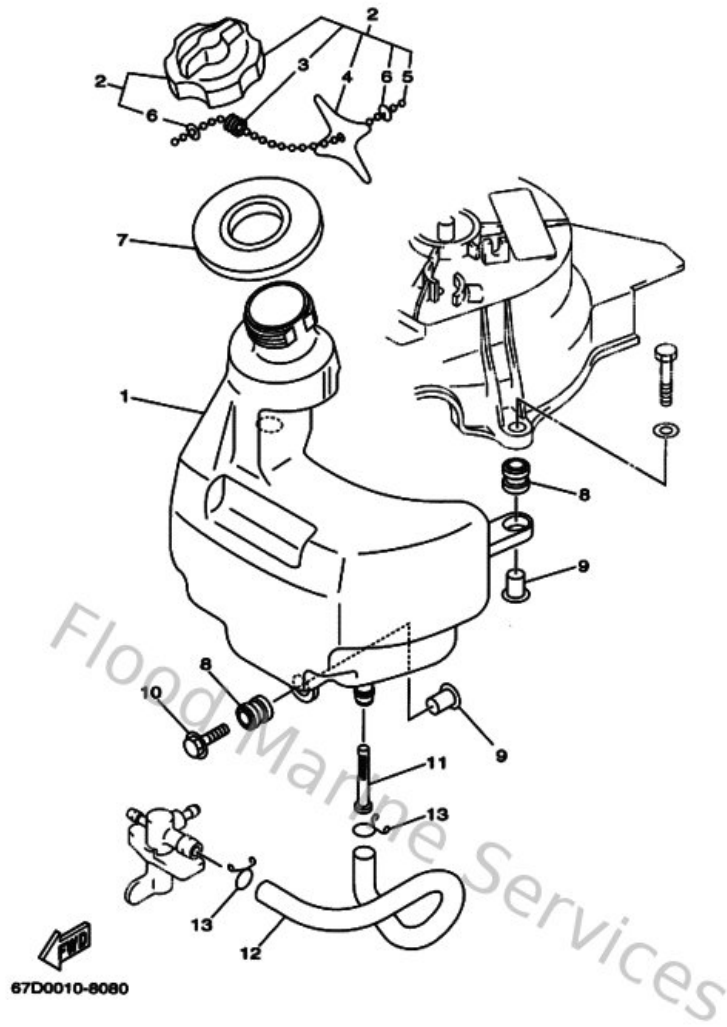
| Ref | Part | |
|-----|--|-------------------------|
| 1 | 67D113110194 Cylinder 1 | Buy now |
| 2 | 650243780000 Pipe, joint 2 | Buy now |
| 3 | 6H1144850000 Pipe, joint | Buy now |
| 4 | 9044507MA300 Hose (I200) | Buy now |
| 5 | 931022509000 Oil seal (25x40x5-256) | Buy now |
| 6 | 93306205U800 Bearing (6k8) | Buy now |
| 7 | 67D151110194 Crankcase 1 | Buy now |
| 8 | 6EEF43770000 Pipe, joint 2 | Buy now |
| 9 | 67D11351A000 Gasket, cylinder | Buy now |
| 11 | 929950860000 Washer, plain (663) | Buy now |
| 12 | 995301011400 Pin, dowel(3vd) | Buy now |
| 13 | 970950802000 Bolt, hexagon | Buy now |
| 15 | 904300820900 Gasket(3gh) | Buy now |
| 16 | 6EEE539600CA Housing, oil seal | Buy now |
| 17 | 932103553700 O-ring | Buy now |

Cylinder & Crankcase 2



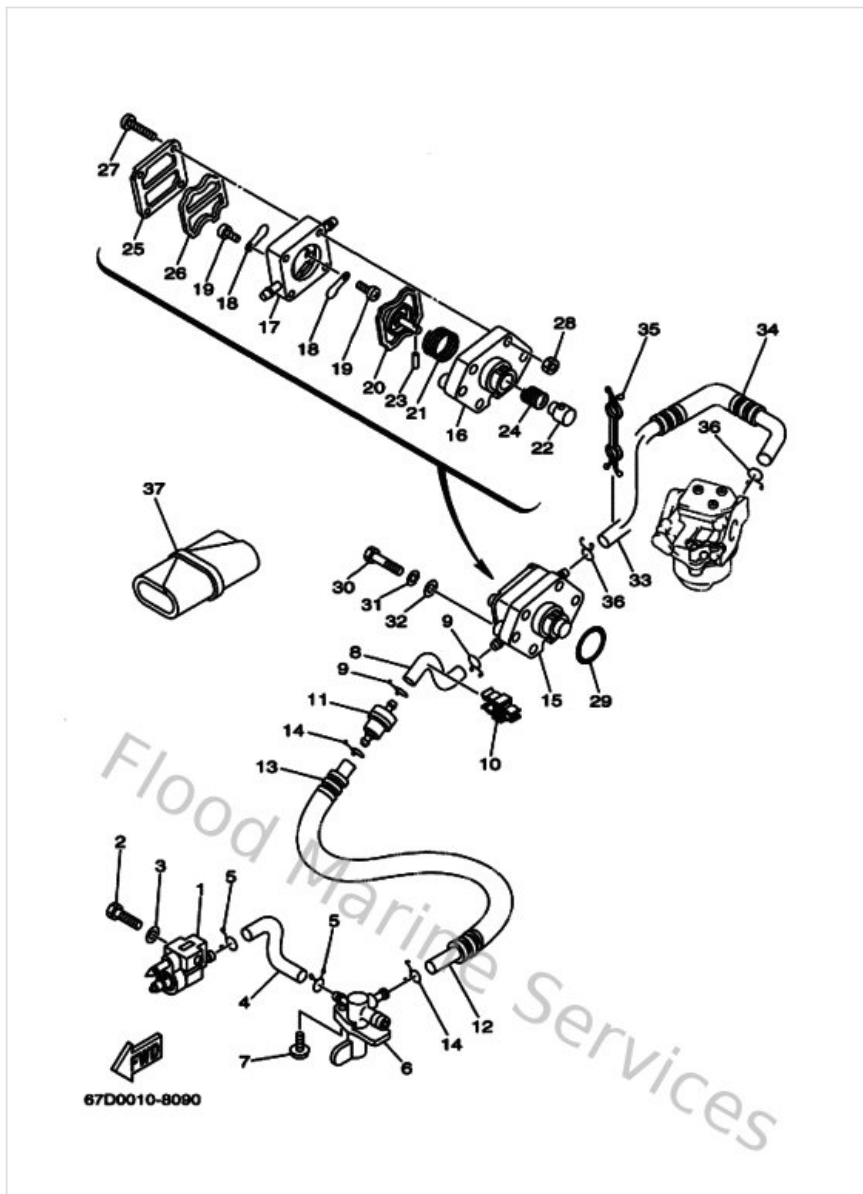
| Ref | Part | |
|-----|--|-------------------------|
| 18 | 931022010800 Oil seal | Buy now |
| 19 | 9310110M2500 Oil seal(6e0) | Buy now |
| 22 | 68DE11680000 Cover, Breather | Buy now |
| 23 | 67D11169A000 Gasket, Breather Cover | Buy now |
| 24 | 975950651400 Bolt(gj3) | Buy now |
| 25 | 6G8153460000 Breather 1 | Buy now |
| 26 | 985030400600 Screw, pan head (7h3) | Buy now |
| 27 | 67D131020100 Gear unit assembly | Buy now |
| 28 | 958170601200 Bolt, flange | Buy now |
| 29 | 67D153620000 Plug, oil level | Buy now |
| 30 | 9321024M7900 O-ring | Buy now |

Fuel



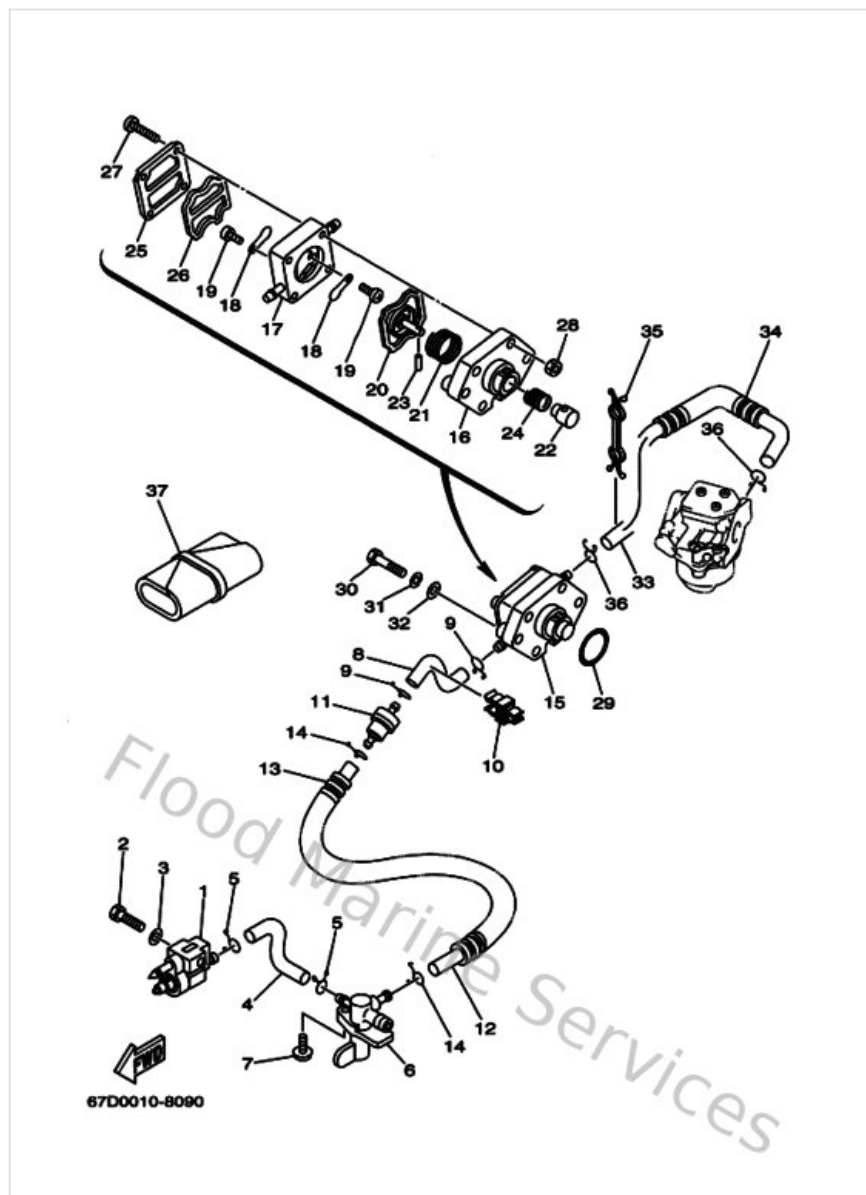
| Ref | Part | |
|-----|---|-------------------------|
| 1 | 67D241110000 Tank, Fuel | Buy now |
| 2 | 67D246100000 Cap assembly | Buy now |
| 3 | 905011026000 Spring, safety 6152463500 | Buy now |
| 4 | 6J8217580000 Washer, special 2 | Buy now |
| 6 | 6H1217570000 Washer, special 1 | Buy now |
| 7 | 6L5246410000 Gasket, cap 1 | Buy now |
| 8 | 6A0823170000 Damper, ignition coil | Buy now |
| 9 | 624425420000 Collar | Buy now |
| 10 | 9011906M8800 Bolt, with washer | Buy now |
| 11 | 6L5242510000 Strainer 1 | Buy now |
| 12 | 67D243110000 Pipe, Fuel 1 | Buy now |
| 13 | 9046713M1300 Clip(6m6) | Buy now |

Fuel 2



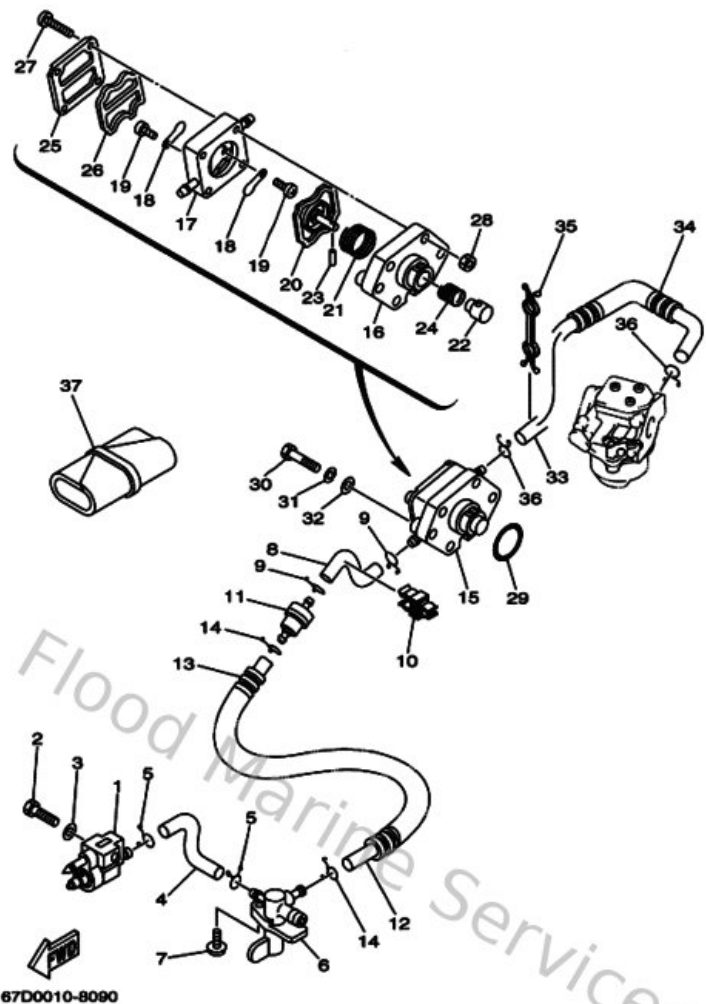
| Ref | Part | |
|-----|---|-------------------------|
| 1 | 6G1243040200 Fuel pipe joint comp. 1 | Buy now |
| 2 | 970950602500 Bolt | Buy now |
| 3 | 929950660000 Washer, plain (646) | Buy now |
| 4 | 67D243120000 Pipe 2 | Buy now |
| 5 | 9046709M0900 Clip(6k8) | Buy now |
| 6 | 67D245000000 Fuel cock assembly 1 | Buy now |
| 7 | 9015906M1000 Screw, with washer(6l5) | Buy now |
| 8 | 67D243130000 Pipe 3 | Buy now |
| 10 | 9046410M5200 Clamp | Buy now |
| 11 | 646242510200 Strainer 1 | Buy now |
| 12 | 9044510M6700 Hose (l400) | Buy now |
| 13 | 9044614M1200 Hose(6tc) | Buy now |
| 15 | 67D244100300 Fuel pump assembly | Buy now |
| 16 | 67D244120000 Body 1 | Buy now |
| 17 | 67D244130200 Body 2 | Buy now |

Fuel 2



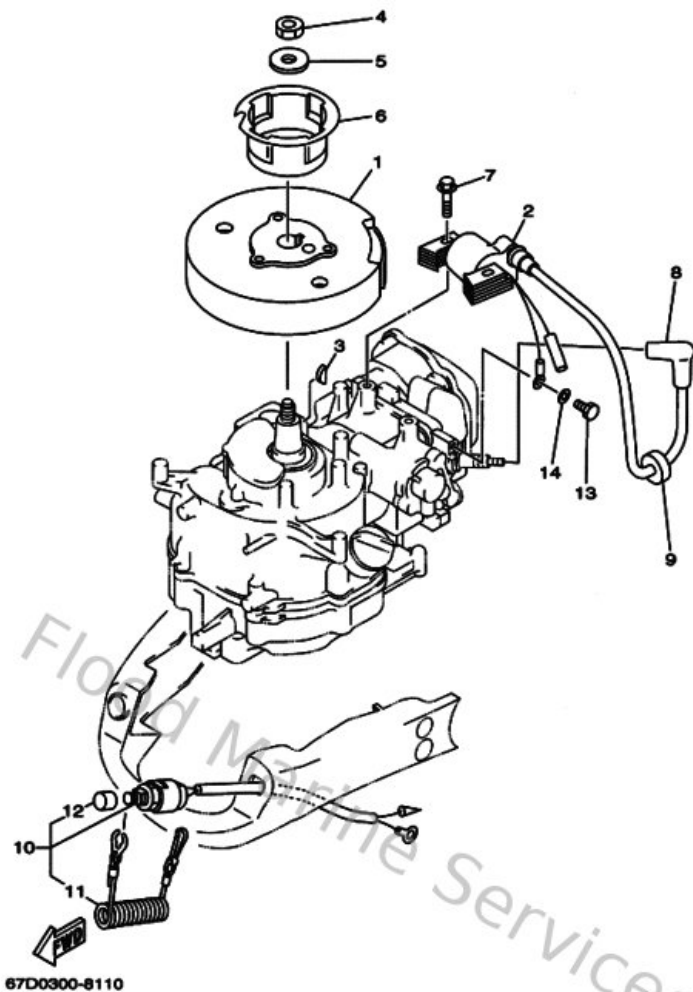
| Ref | Part | |
|-----|---|-------------------------|
| 18 | 6A0244210100 Valve, check | Buy now |
| 19 | 6E7143250000 Screw, pan head | Buy now |
| 20 | 67D244110000 Diaphragm | Buy now |
| 21 | 67D244230000 Spring, diaphragm | Buy now |
| 22 | 67D131310000 Plunger | Buy now |
| 23 | 66M243740000 Pin | Buy now |
| 24 | 67D244540000 Spring | Buy now |
| 25 | 67D244140100 Body 3 | Buy now |
| 26 | 66M244710000 Diaphragm | Buy now |
| 27 | 67D244440000 Screw | Buy now |
| 28 | 953800460000 Nut, hex | Buy now |
| 29 | 932102780600 O-ring | Buy now |
| 30 | 970950603000 Bolt(jf7) | Buy now |
| 31 | 929950610000 Washer(6a1) | Buy now |
| 33 | 9044510M4300 Hose (I400) | Buy now |

Fuel 2



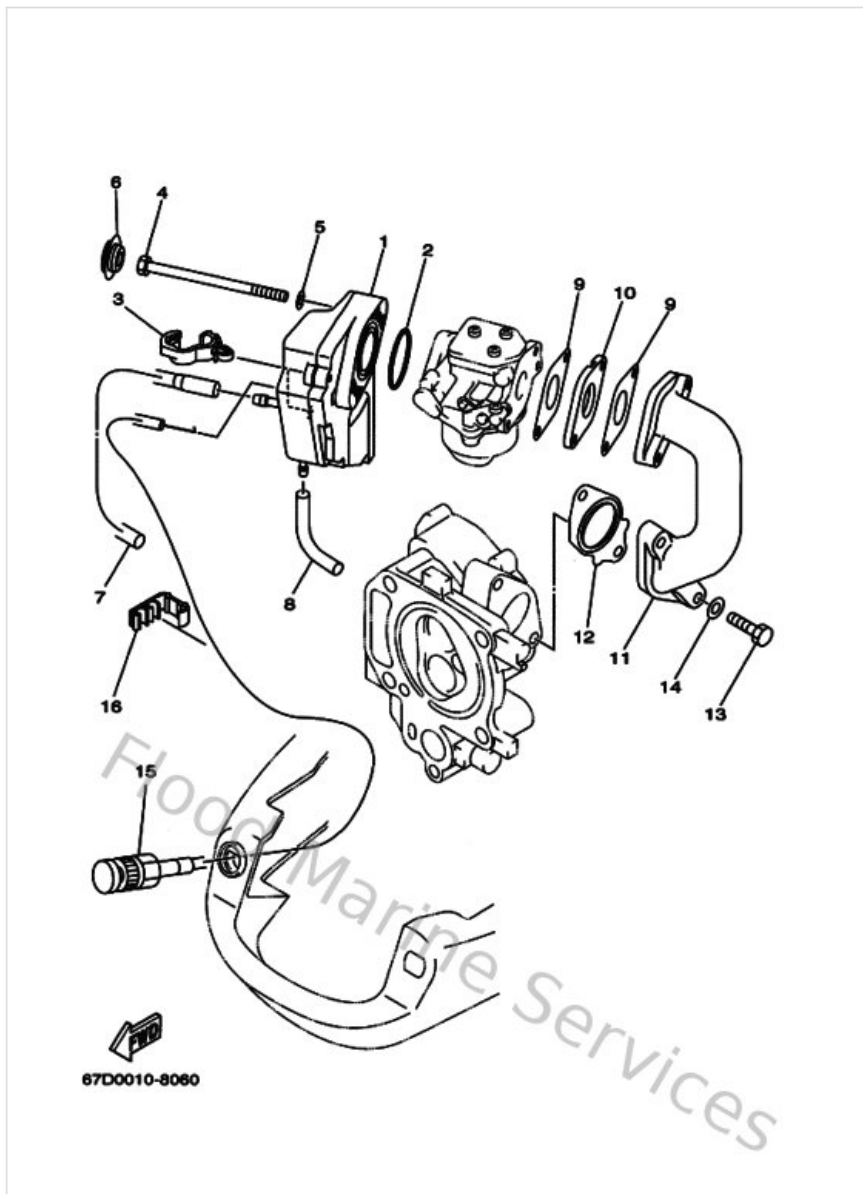
| Ref | Part | |
|-----|---------------------------------------|-------------------------|
| 35 | 9046410M5300 Clamp | Buy now |

Generator



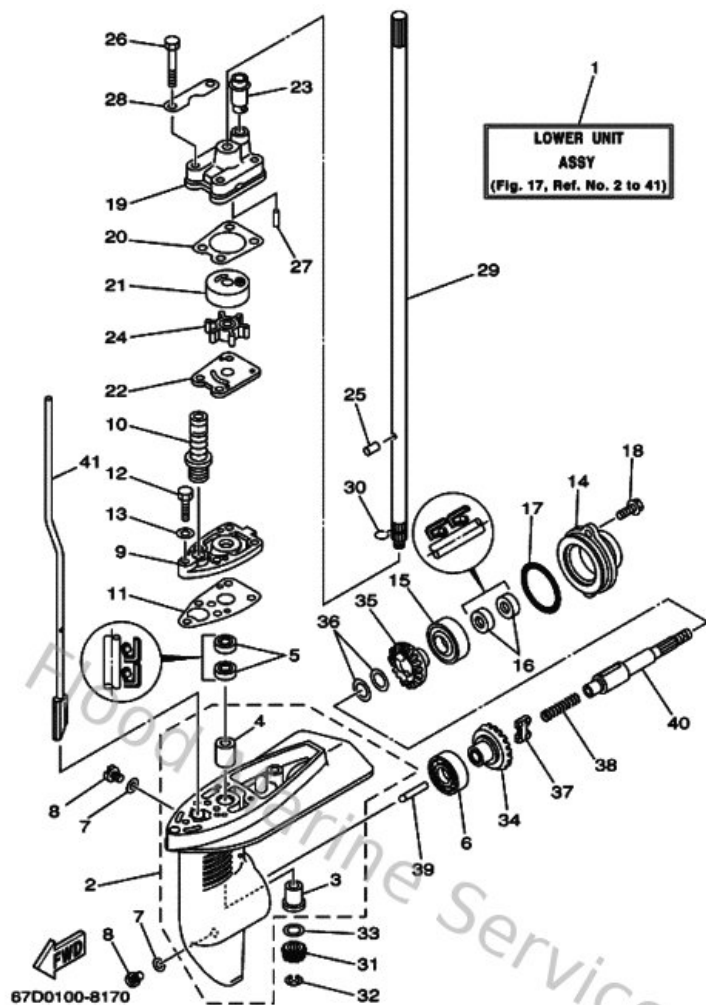
| Ref | Part | |
|-----|---|-------------------------|
| 1 | 67D856500000 Rotor assembly | Buy now |
| 2 | 67D856400000 T.c.i. unit assembly | Buy now |
| 3 | 9028004M0600 Key, woodruff(6a1) | Buy now |
| 4 | 9017010M3300 Nut(6a1) | Buy now |
| 5 | 90201105A200 Washer, plate (4x7) | Buy now |
| 6 | 67D157230000 Pulley Starter | Buy now |
| 7 | 9010506M2400 Bolt (6g1) | Buy now |
| 8 | 6E3823702100 Plug cap assembly | Buy now |
| 9 | 904802516100 Grommet(656) | Buy now |
| 10 | 67D825750000 Engine stop switch assembly | Buy now |
| 11 | 682825560000 Lanyard, stop switch | Buy now |
| 12 | 6898257Y0000 Cap | Buy now |
| 13 | 970950601200 Bolt(gh1) | Buy now |
| 14 | 929950660000 Washer, plain (646) | Buy now |

Intake



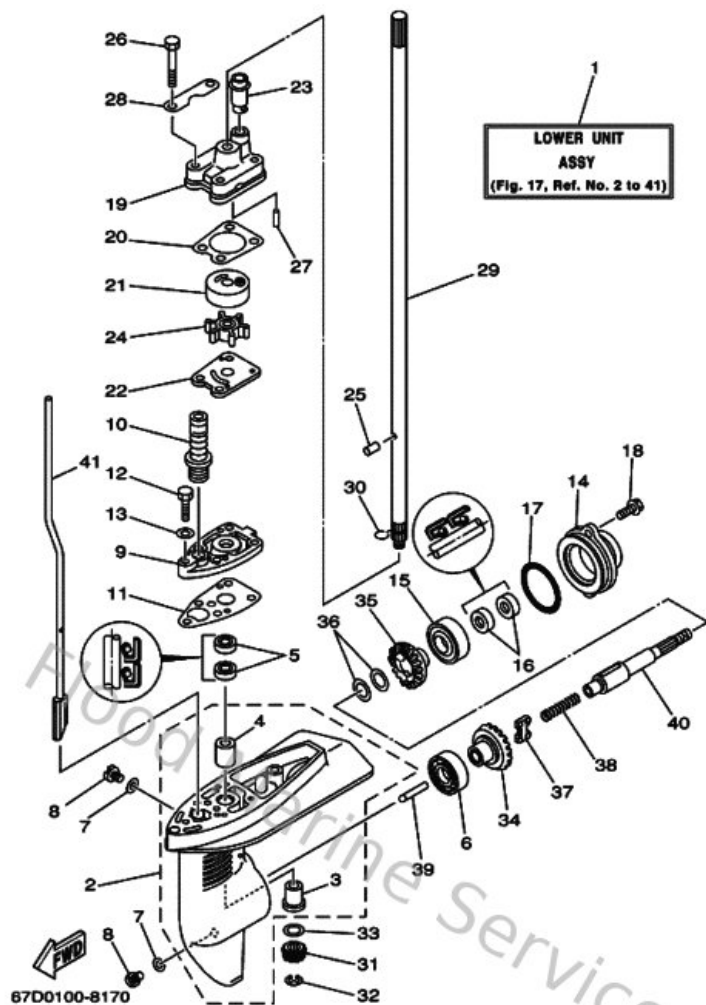
| Ref | Part | |
|-----|---|-------------------------|
| 1 | 67D144400000 Silencer assembly, Intake | Buy now |
| 2 | 9321031MJ500 O-ring | Buy now |
| 3 | 904641324900 Clamp | Buy now |
| 4 | 970950609000 Bolt(62y) | Buy now |
| 5 | 929900660000 Washer, plain (646) | Buy now |
| 6 | 9048018M7400 Grommet | Buy now |
| 7 | 9044509M4100 Hose (L175) | Buy now |
| 8 | 9044507M2800 Hose (I200) | Buy now |
| 9 | 67D13646A000 Gasket Int. Manifold | Buy now |
| 10 | 67D136470000 Gasket, Manifold 3 | Buy now |
| 11 | 68DE36410094 Manifold, Intake 1 | Buy now |
| 12 | 67D13645A000 Gasket, Manifold 1 | Buy now |
| 13 | 9010106M2700 Bolt | Buy now |
| 14 | 929950660000 Washer, plain (646) | Buy now |
| 15 | 67D263300000 Wire starter | Buy now |

Lower Casing & Drive 1



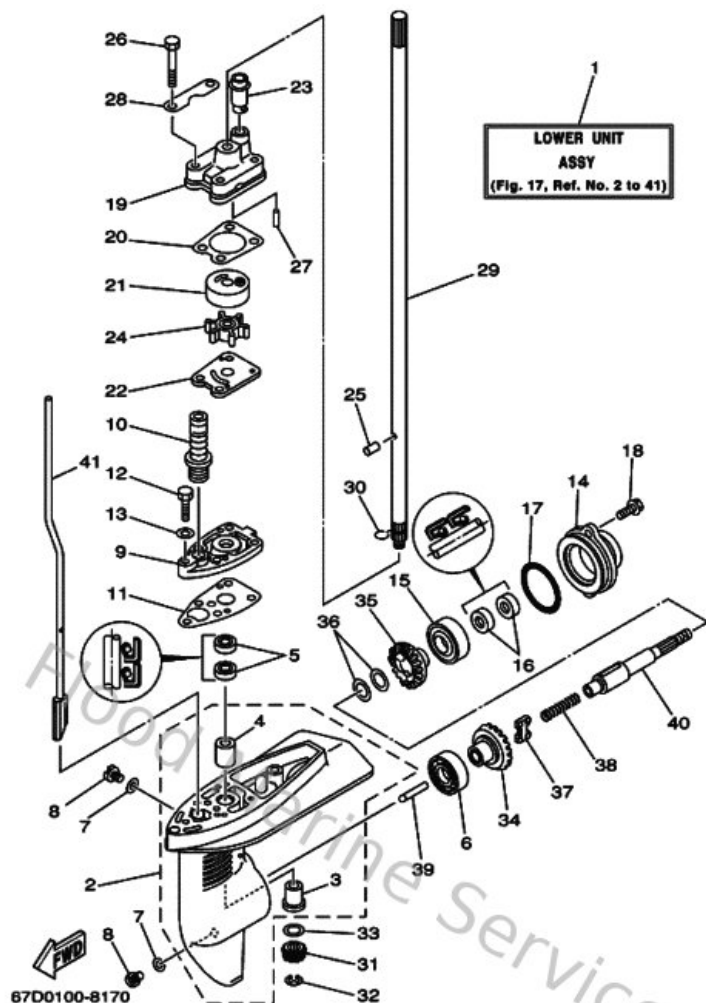
| Ref | Part | |
|-----|---|-------------------------|
| 1 | 67D45300004D Lower Unit assembly | Buy now |
| 2 | 6E045311024D Casing, lower | Buy now |
| 3 | 6E0453170900 Bushing | Buy now |
| 4 | 6E0453160900 Bushing | Buy now |
| 5 | 931011081100 Oil seal | Buy now |
| 6 | 93306004U000 Bearing (7k2) | Buy now |
| 7 | 904300802000 Gasket | Buy now |
| 8 | 9034008M0400 Plug, straight screw | Buy now |
| 9 | 6E04532101CA Plate | Buy now |
| 10 | 6L2441470000 Boot, shift rod | Buy now |
| 11 | 6E045315A000 Packing, lower casing | Buy now |
| 12 | 970950602500 Bolt | Buy now |
| 13 | 929950660000 Washer, plain (646) | Buy now |
| 14 | 6E045361018D Cap, lower casing | Buy now |
| 16 | 9310113M1200 Oil seal | Buy now |

Lower Casing & Drive 1



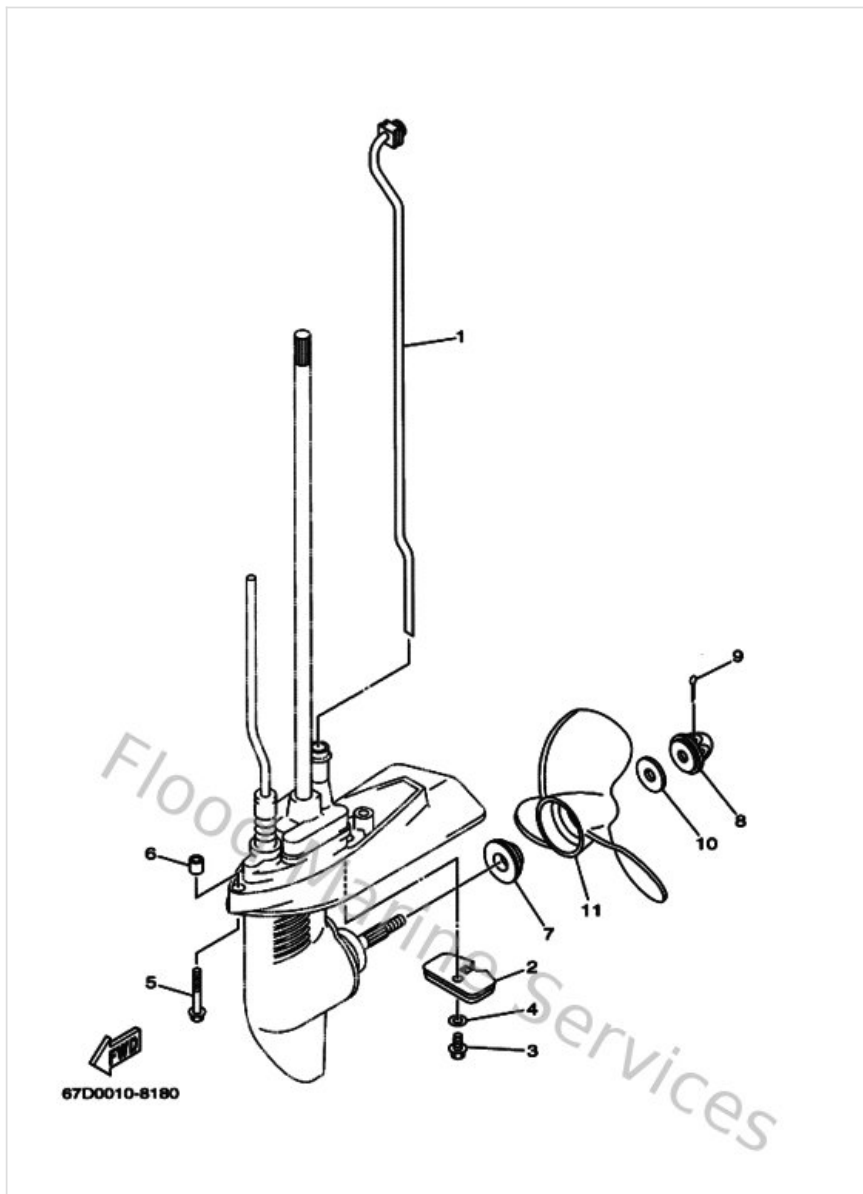
| Ref | Part | |
|-----|--|-------------------------|
| 17 | 932104821400 O-ring | Buy now |
| 18 | 958950601600 Bolt, flange deep recess | Buy now |
| 19 | 6E0443110000 Housing, water pump | Buy now |
| 20 | 6E044315A000 Gasket, water pump 1 | Buy now |
| 21 | 6E0443220200 Insert, cartridge | Buy now |
| 22 | 6E0443230000 Outer plate, cartridge | Buy now |
| 23 | 67D443660000 Damper, water seal 2 | Buy now |
| 24 | 6E0443520000 Impeller | Buy now |
| 25 | 936040906600 Pin, dowel | Buy now |
| 26 | 970800604500 Bolt, hexagon | Buy now |
| 27 | 936041808000 Pin, dowel. (647) | Buy now |
| 28 | 6E0443280000 Plate | Buy now |
| 29 | 6E0455110100 Shaft, drive | Buy now |
| 30 | 9046708M0100 Clip (6e0) | Buy now |
| 31 | 6E0455510000 Pinion (13t) | Buy now |

Lower Casing & Drive 1



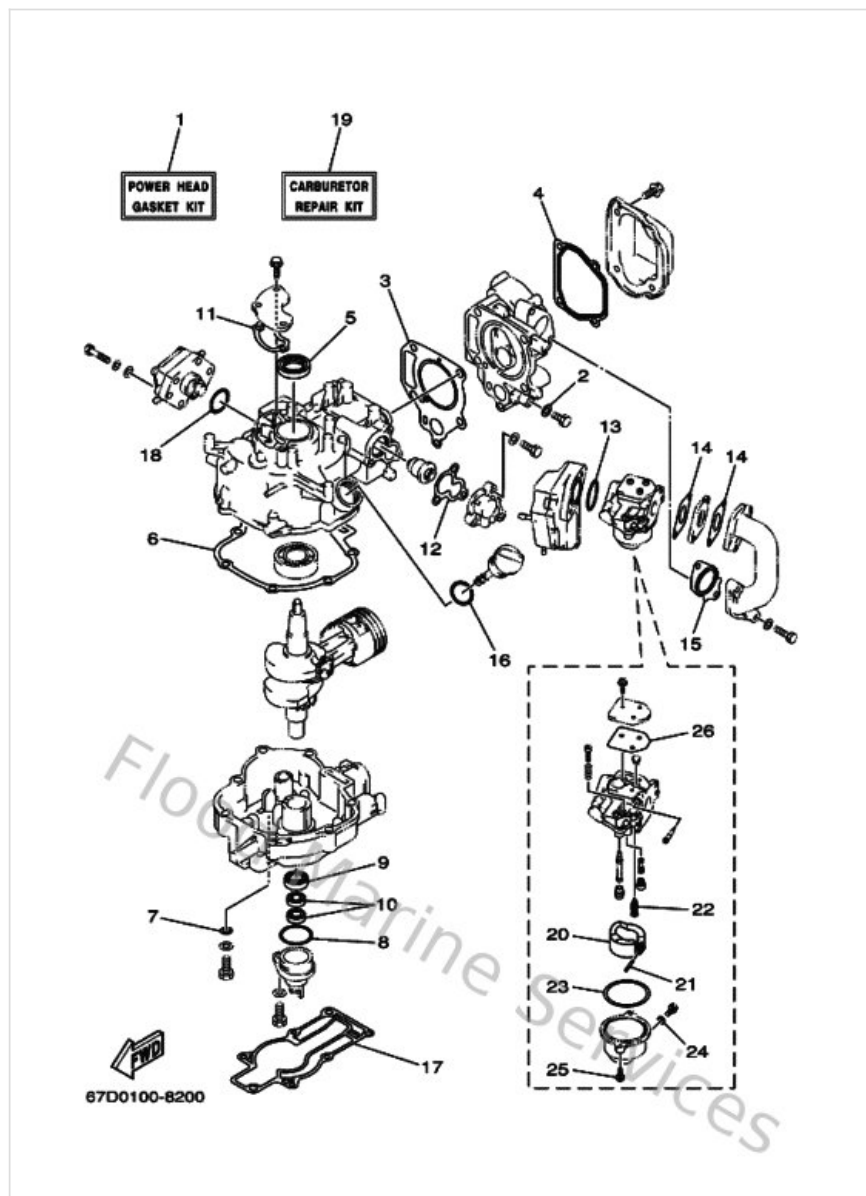
| Ref | Part | |
|-----|--|-------------------------|
| 32 | 990010660000 Circlip(53l) | Buy now |
| 33 | 9020111M4900 Washer, plate (6e0) | Buy now |
| 34 | 67D455600000 Gear | Buy now |
| 35 | 67D455700000 Gear | Buy now |
| 36 | 67D455760000 Washer, thrust 2 | Buy now |
| 37 | 67D456310100 Clutch, dog | Buy now |
| 38 | 905011006400 Spring, compression 6164563600 | Buy now |
| 39 | 6EEG56350000 Plunger, shift | Buy now |
| 40 | 67D456110000 Shaft, propeller | Buy now |
| 41 | 67D441500000 Shift cam assembly | Buy now |

Lower Casing & Drive 2



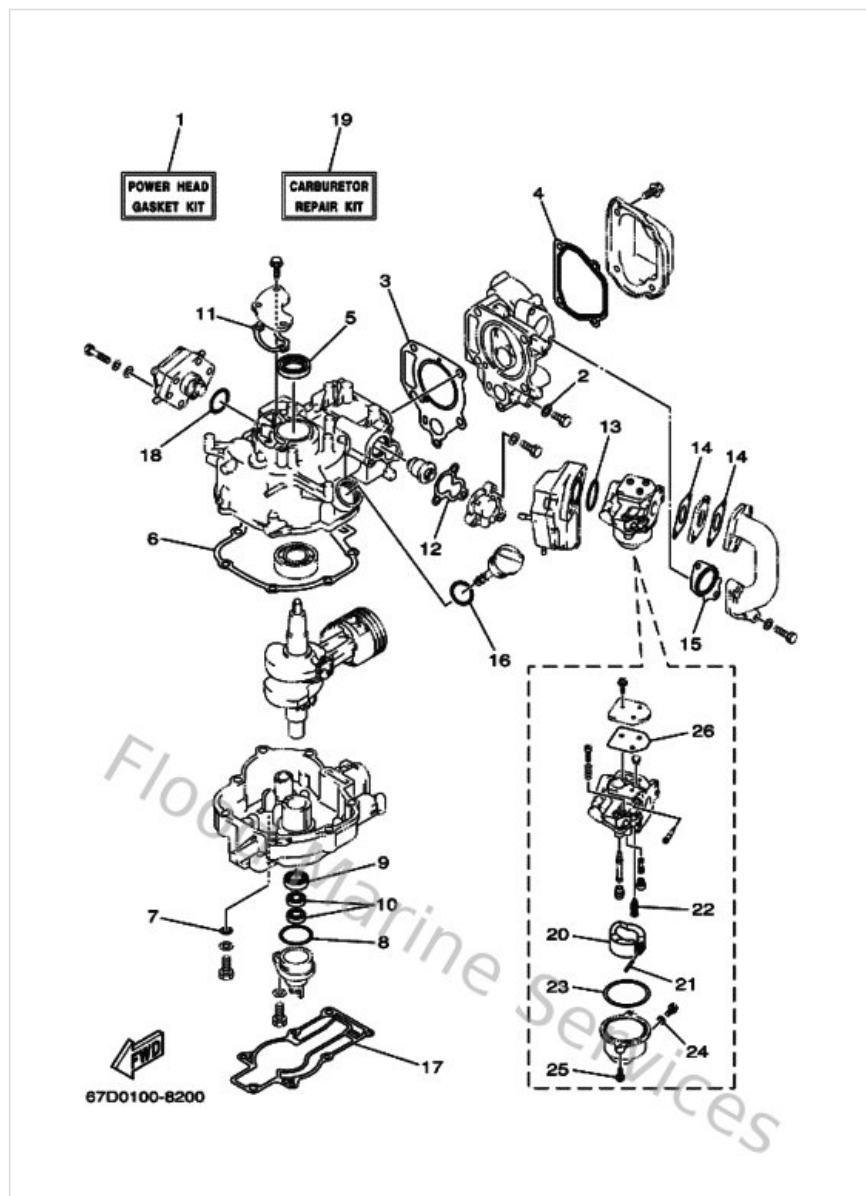
| Ref | Part | |
|-----|--|-------------------------|
| 1 | 67D443600000 Water Tube assembly | Buy now |
| 2 | 6L5452510300 Anode | Buy now |
| 3 | 958950601200 Bolt, flange deep recess | Buy now |
| 4 | 929900630000 Washer, tooth | Buy now |
| 5 | 9011906M4000 Bolt, with washer | Buy now |
| 6 | 9038706M1400 Collar(6e0) | Buy now |
| 7 | 6L5459870100 Spacer 1 | Buy now |
| 8 | 6L5456160000 Nut, propeller | Buy now |
| 9 | 914902503000 Pin, cotter(6I5) | Buy now |
| 10 | 9020108M5400 Washer, plate (6e5) | Buy now |
| 11 | 6E04594900EL Propeller (3x7-1/4 x6-1/2 -ba) | Buy now |

Repair Kit 1



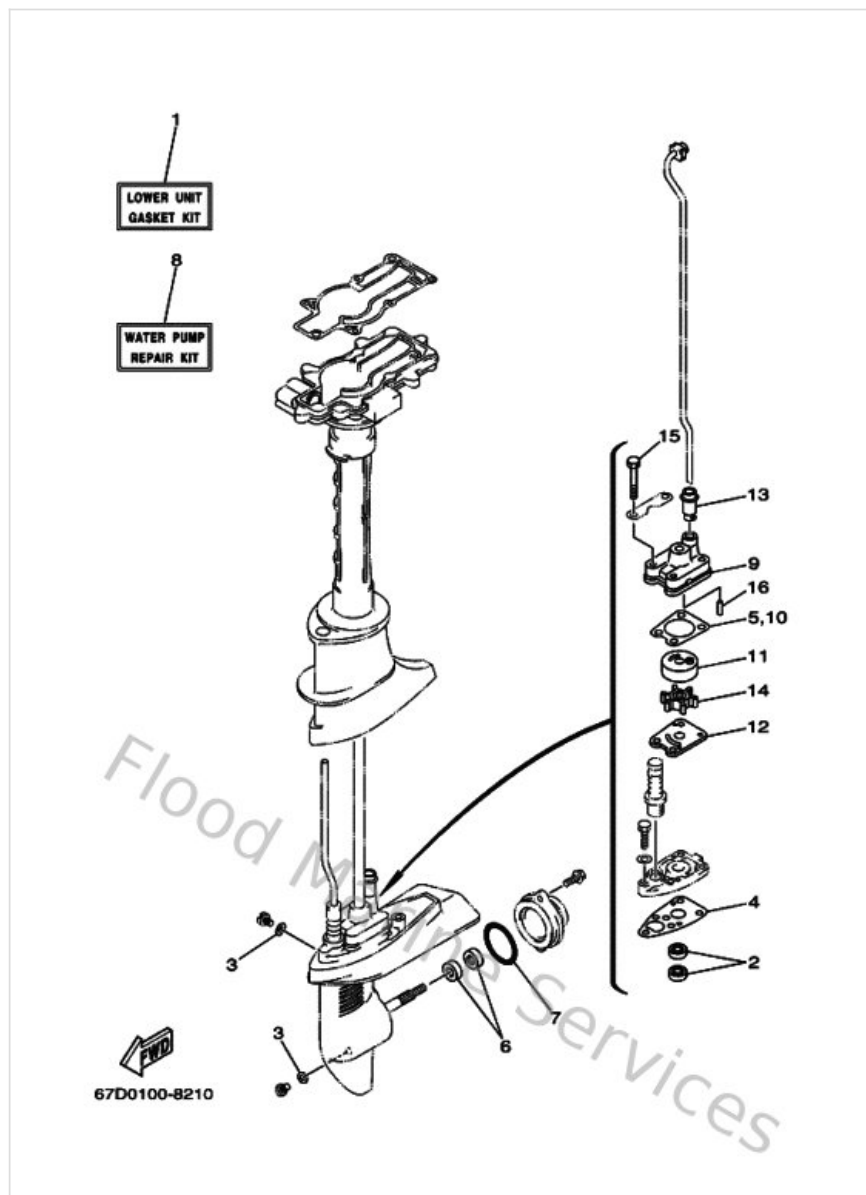
| Ref | Part | |
|-----|---|-------------------------|
| 1 | 67DW00010000 Power head gasket kit | Buy now |
| 2 | 904300814300 Gasket (256-11198-00) | Buy now |
| 3 | 67D11181A000 Gasket, cylinder head 1 | Buy now |
| 4 | 67D11193A000 Gasket head cover | Buy now |
| 5 | 931022509000 Oil seal (25x40x5-256) | Buy now |
| 6 | 67D11351A000 Gasket, cylinder | Buy now |
| 7 | 904300820900 Gasket(3gh) | Buy now |
| 8 | 932103553700 O-ring | Buy now |
| 9 | 931022010800 Oil seal | Buy now |
| 10 | 9310110M2500 Oil seal(6e0) | Buy now |
| 11 | 67D11169A000 Gasket, Breather Cover | Buy now |
| 12 | 67D12414A000 Gasket, cover | Buy now |
| 13 | 9321031MJ500 O-ring | Buy now |
| 14 | 67D13646A000 Gasket Int. Manifold | Buy now |
| 15 | 67D13645A000 Gasket, Manifold 1 | Buy now |

Repair Kit 1



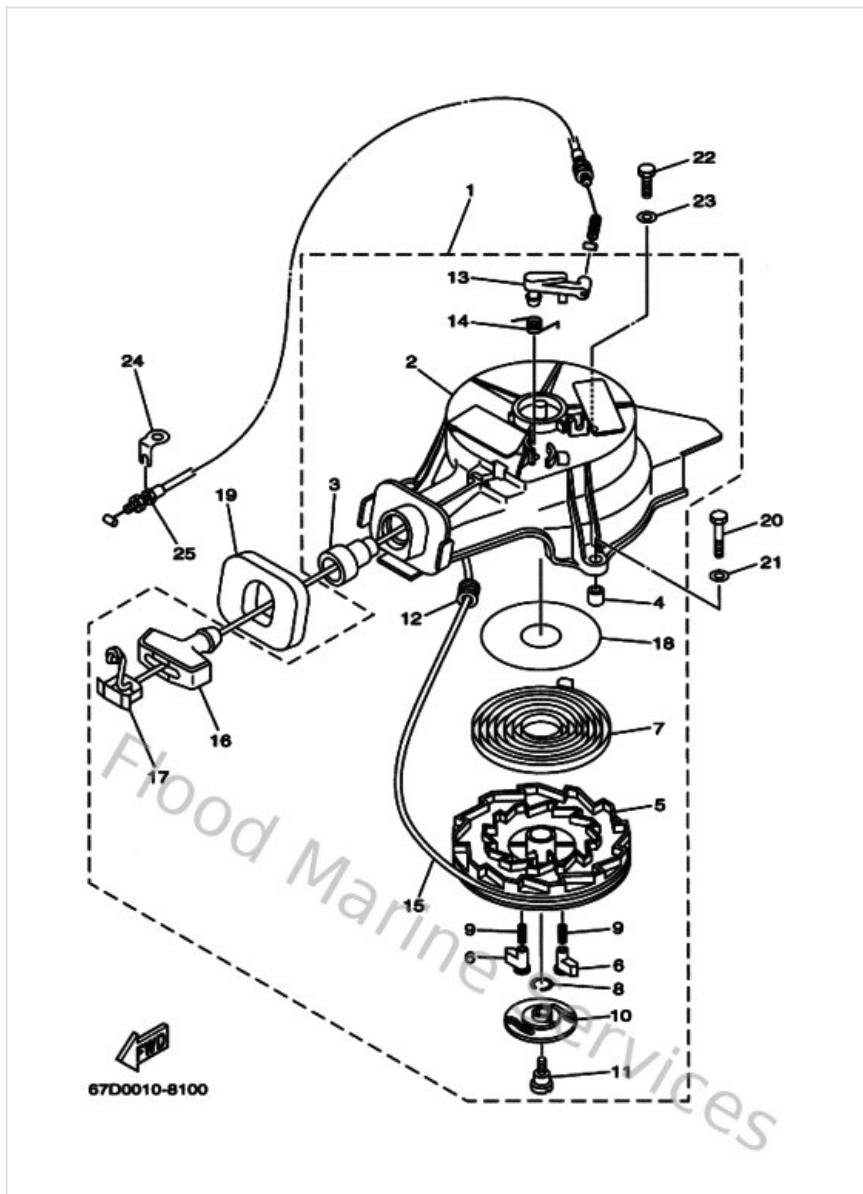
| Ref | Part | |
|-----|---|-------------------------|
| 16 | 9321024M7900 O-ring | Buy now |
| 17 | 67D45113A000 Gasket, upper casing | Buy now |
| 18 | 9321027ME300 O-ring | Buy now |
| 19 | 67DW00930000 Carburetor repair kit | Buy now |
| 20 | 67D143850000 Float | Buy now |
| 21 | 67D143860000 Pin, float | Buy now |
| 22 | 67D145460000 Valve, needle | Buy now |
| 23 | 67D149840000 Gasket, float chamber | Buy now |
| 24 | 6J8149590000 Gasket, drain screw | Buy now |
| 25 | 979800411200 Screw, pan head (686) | Buy now |
| 26 | 67D145360000 Gasket | Buy now |

Repair Kit 2



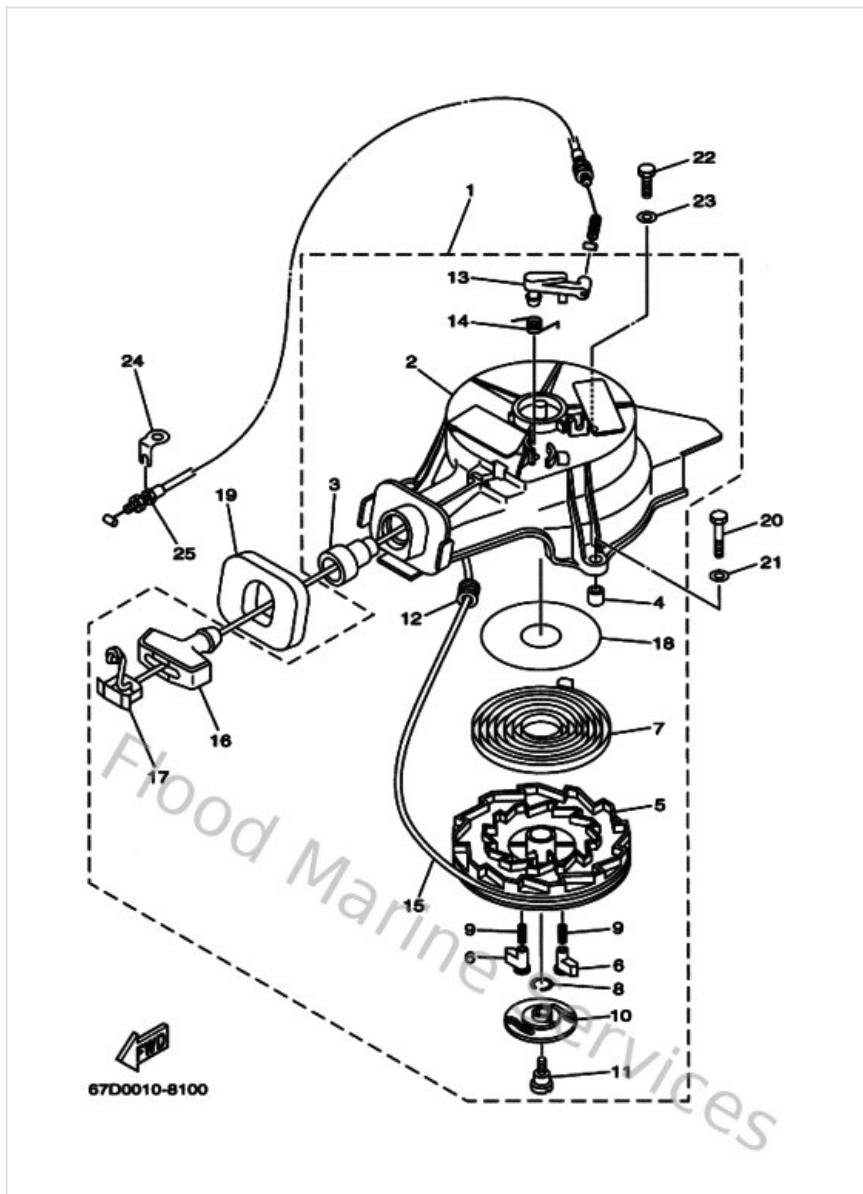
| Ref | Part | |
|-----|--|-------------------------|
| 1 | 6E0W0001C100 Lower unit gasket kit | Buy now |
| 2 | 9310110M1400 Oil seal | Buy now |
| 3 | 904300802000 Gasket | Buy now |
| 4 | 6E045315A000 Packing, lower casing | Buy now |
| 5 | 6E044315A000 Gasket, water pump 1 | Buy now |
| 6 | 9310113M1200 Oil seal | Buy now |
| 7 | 932104821400 O-ring | Buy now |
| 8 | 68DWG0780000 Water Pump Repair Kit | Buy now |
| 9 | 6E0443110000 Housing, water pump | Buy now |
| 11 | 6E0443220200 Insert, cartridge | Buy now |
| 12 | 6E0443230000 Outer plate, cartridge | Buy now |
| 13 | 6EEG43660000 Damper, water seal 2 | Buy now |
| 14 | 6E0443520000 Impeller | Buy now |
| 15 | 970950604500 Bolt, hexagon | Buy now |
| 16 | 936041808000 Pin. dowel. (647) | Buy now |

Starter



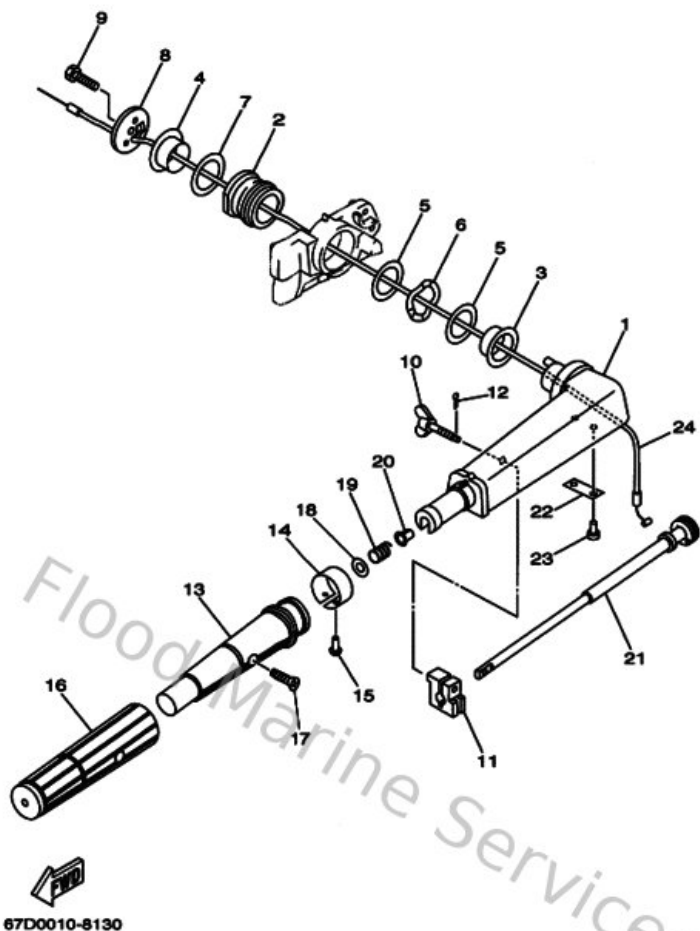
| Ref | Part | |
|-----|--|-------------------------|
| 1 | 67D157100000 Starter assembly | Buy now |
| 2 | 67D157110000 Case, Starter | Buy now |
| 3 | 63V157950100 Guide, rope | Buy now |
| 4 | 67D157640000 Collar 1 | Buy now |
| 5 | 67D157140000 Drum, sheave | Buy now |
| 6 | 67D157410000 Pawl, drive | Buy now |
| 7 | 67D157130000 Spring, starter | Buy now |
| 8 | 67D157050000 Spring, drive pawl | Buy now |
| 9 | 67D157670000 Spring | Buy now |
| 10 | 67D157350000 Guide, cam | Buy now |
| 11 | 67D157930000 Screw | Buy now |
| 12 | 63V157640000 Collar 1 | Buy now |
| 13 | 67D157940000 Stopper | Buy now |
| 14 | 67D157340000 Spring, return | Buy now |
| 15 | 67D157510000 Wire, starter (l:1800mm) | Buy now |

Starter



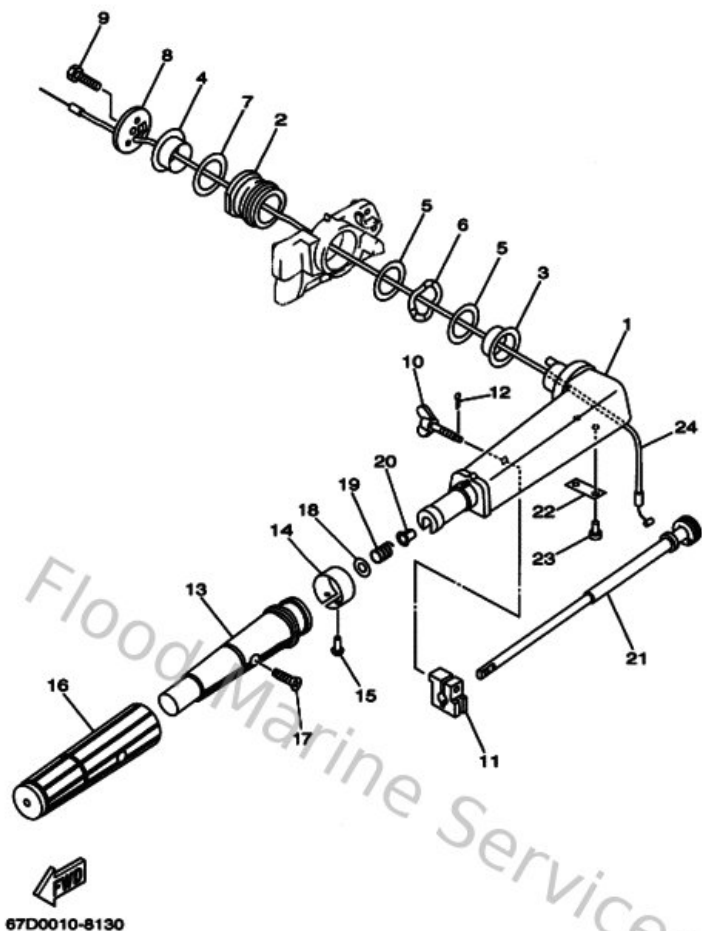
| Ref | Part | |
|-----|---|-------------------------|
| 16 | 6G1157550000 Handle, starter | Buy now |
| 17 | 6G1157790000 Cover | Buy now |
| 18 | 67D157390000 Washer, thrust | Buy now |
| 19 | 67D157620000 Seal Rubber 2 | Buy now |
| 20 | 970950603500 Bolt(j52) | Buy now |
| 21 | 929900660000 Washer, plain (646) | Buy now |
| 22 | 970950602000 Bolt(7u8) | Buy now |
| 23 | 929950660000 Washer, plain (646) | Buy now |
| 24 | 67D157720000 Stay 2 | Buy now |
| 25 | 67D157700000 Cable comp., starter stop | Buy now |

Steering



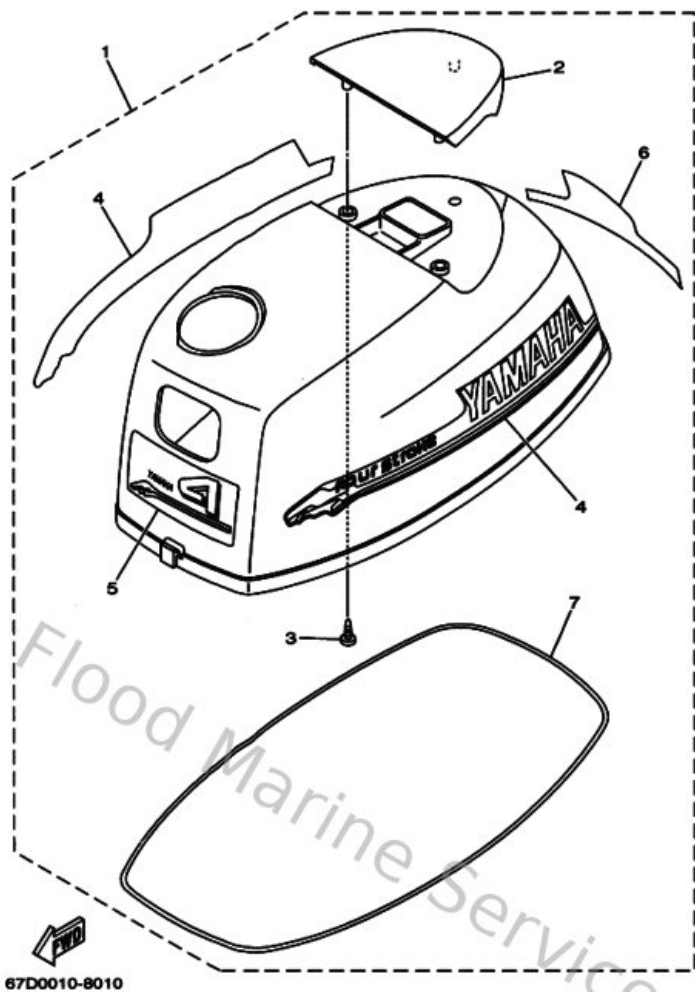
| Ref | Part | |
|-----|---|-------------------------|
| 1 | 67D42111004D Handle, Steering | Buy now |
| 2 | 67D421290000 Bushing, rubber | Buy now |
| 3 | 67D421710000 Bushing, 1 | Buy now |
| 4 | 67D421720000 Bushing, 2 | Buy now |
| 5 | 68DG21810000 Washer, 1 | Buy now |
| 6 | 69MG21880000 Washer,wave | Buy now |
| 7 | 67D421820000 Washer, 2 | Buy now |
| 8 | 68DG21310000 Cover, Handle Steering | Buy now |
| 9 | 970750802500 Bolt, hexagon deep recess | Buy now |
| 10 | 6G1421250100 Bolt, friction adjusting | Buy now |
| 11 | 6G1421260000 Piece, friction | Buy now |
| 12 | 914901601000 Pin, cotter | Buy now |
| 13 | 67D421190000 Grip, steering handle | Buy now |
| 15 | 9026902M0900 Rivet(615) | Buy now |
| 16 | 67D421770000 Rubber, handle | Buy now |

Steering



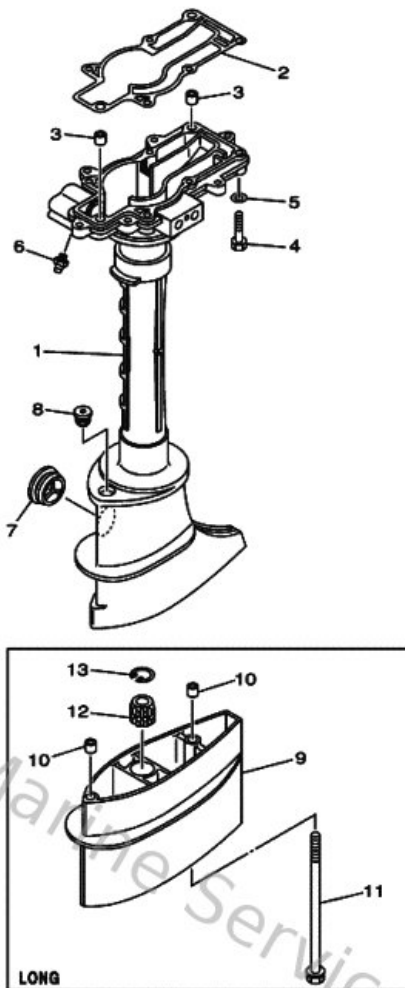
| Ref | Part | |
|-----|---|-------------------------|
| 17 | 9014905M1300 Screw, countersunk | Buy now |
| 18 | 929031060000 Washer, plate | Buy now |
| 19 | 905012321500 Spring (655) | Buy now |
| 20 | 903860803200 Bushing (650) | Buy now |
| 21 | 6G1421380100 Lever, throttle | Buy now |
| 22 | 6E0421590200 Stay | Buy now |
| 23 | 978850501200 Screw, pan head (646) | Buy now |
| 24 | 67D263010000 Throttle cable | Buy now |

Top Cowling



| Ref | Part | |
|-----|--|-------------------------|
| 1 | 68DG2610104D Top Cowling assembly | Buy now |
| 2 | 67D426130000 Molding,air duct | Buy now |
| 3 | 977804001200 Screw, trushead tapping (ge31) | Buy now |
| 4 | 67DW00701000 Graphic Set | Buy now |
| 5 | 67D426771100 Graphic, rear | Buy now |
| 6 | 67D426781000 Graphic, rear | Buy now |
| 7 | 67D426150000 Seal | Buy now |

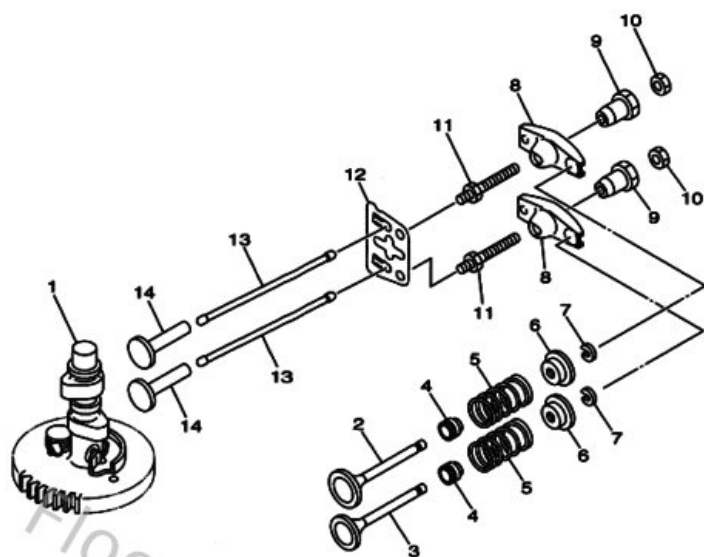
Upper Casing



67D0100-8160

| Ref | Part | |
|-----|--|-------------------------|
| 1 | 67D45111004D Casing, Upper | Buy now |
| 2 | 67D45113A000 Gasket, upper casing | Buy now |
| 3 | 9038706M1400 Collar(6e0) | Buy now |
| 4 | 970950603500 Bolt(j52) | Buy now |
| 5 | 929950660000 Washer, plain (646) | Buy now |
| 6 | 9370006M0300 Nipple, grease(6a1) | Buy now |
| 7 | 647451510100 Cover, upper casing | Buy now |
| 8 | 9048010M1300 Grommet (6e0) | Buy now |
| 9 | 67D45211004D Extension | Buy now |
| 11 | 9011906M7700 Bolt, with washer | Buy now |
| 12 | 6E0453180100 Bushing, drive shaft 3 | Buy now |
| 13 | 9342022M0300 Cir clip (6e0) | Buy now |

Valve




67D0010-8050

| Ref | Part | |
|-----|--|-------------------------|
| 1 | 67D121700000 Cam shaft assembly | Buy now |
| 2 | 67D121110000 Valve, intake | Buy now |
| 3 | 67D121210000 Valve, exhaust | Buy now |
| 4 | 6EEE21190000 Seal, valve stem | Buy now |
| 5 | 6EGE21130000 Spring, valve inne | Buy now |
| 6 | 7NJ121170000 Retainer, valve spring | Buy now |
| 7 | 7NJ121180000 Cotter, valve | Buy now |
| 8 | 6EEE21510000 Arm, valve rocker | Buy now |
| 9 | 7FK121650000 Pivot, rocker arm | Buy now |
| 10 | 6EEE21580000 Nut, lock | Buy now |
| 11 | 67D121570000 Bolt | Buy now |
| 12 | 67D121550100 Guide, Push Rod | Buy now |
| 13 | 67D121540000 Rod, valve push | Buy now |
| 14 | JA9121530000 Lifter, valve | Buy now |

Disclaimer

This document is provided for convenience only. It is **not** an official Yamaha publication and is **not supplied, endorsed, or approved** by Yamaha Motor Co., Ltd.

Reasonable efforts are made to keep information accurate; however diagrams, part references, supersessions, descriptions, and applicability may contain errors or omissions. Specifications and part availability may change without notice.

You are responsible for confirming the correct parts for your engine (including model code, year, serial range, and any superseded part numbers) before ordering or fitting.