



# Yamaha F4MHB 2003

## Parts Manual

[www.floodmarine.co.uk](http://www.floodmarine.co.uk)

+44 2882 246 539

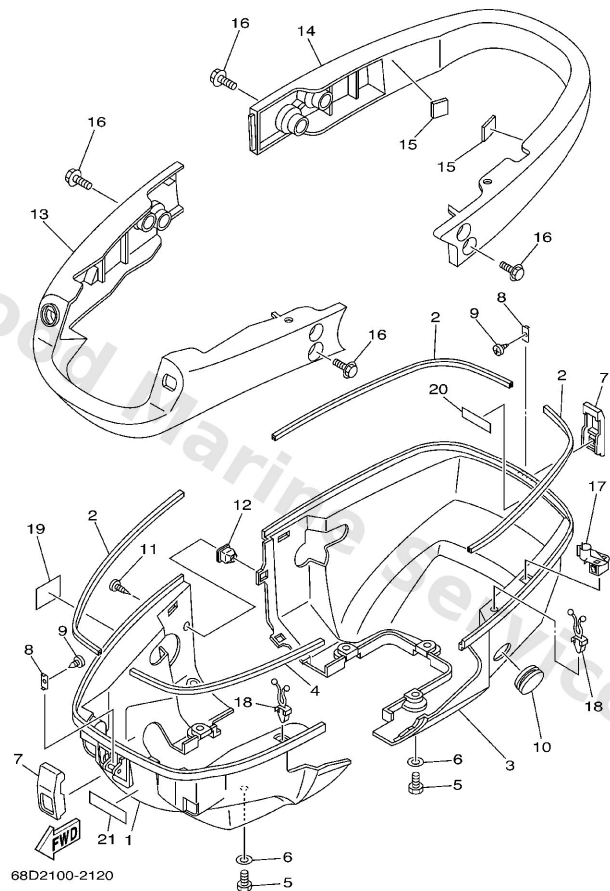
Authorised Yamaha Dealers



# Contents

<b>BOTTOM COWLING</b>	3
<b>BRACKET</b>	5
<b>CARBURETOR</b>	8
<b>CONTROL</b>	10
<b>CRANKSHAFT. PISTON</b>	11
<b>CYLINDER. CRANKCASE 1</b>	12
<b>CYLINDER. CRANKCASE 2</b>	14
<b>FUEL 1</b>	16
<b>FUEL 2</b>	17
<b>FUEL TANK</b>	20
<b>GENERATOR</b>	21
<b>INTAKE</b>	22
<b>LOWER CASING. DRIVE 1</b>	23
<b>LOWER CASING. DRIVE 2</b>	26
<b>REPAIR KIT 1</b>	27
<b>REPAIR KIT 2</b>	29
<b>STARTER</b>	30
<b>STEERING</b>	33
<b>TOP COWLING</b>	36
<b>UPPER CASING</b>	37
<b>VALVE</b>	38

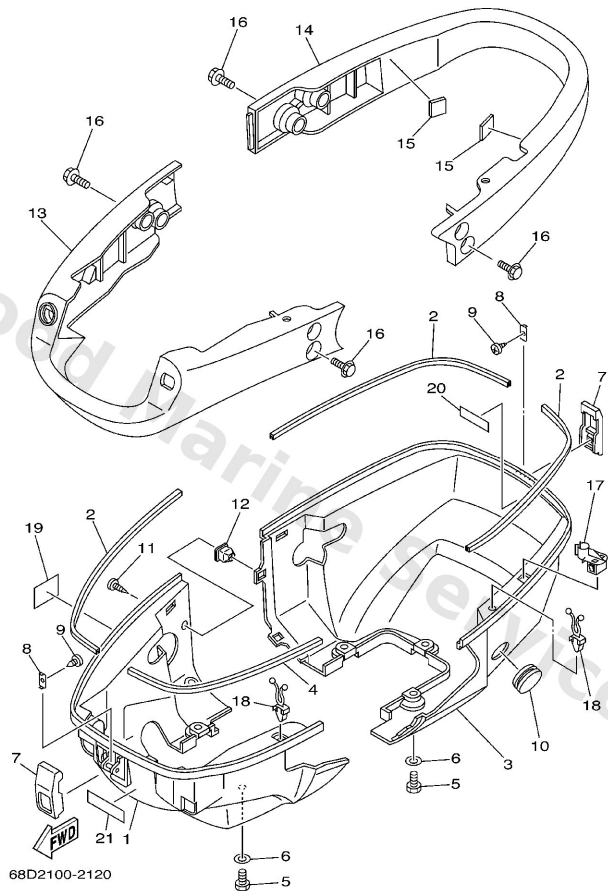
## Bottom Cowling



**C4**

Ref	Part	
1	<a href="#">68D-G2711-01</a> Cowling bottom 1	<a href="#">Buy now</a>
2	<a href="#">68D-G2628-00</a> Seal rubber 1	<a href="#">Buy now</a>
3	<a href="#">68D-G2712-01</a> Cowling bottom 2	<a href="#">Buy now</a>
4	<a href="#">68D-G2629-00</a> Seal	<a href="#">Buy now</a>
5	<a href="#">97095-06016</a> Bolt, hexagon deep recess	<a href="#">Buy now</a>
6	<a href="#">92995-06600</a> Washer, plain (646)	<a href="#">Buy now</a>
7	<a href="#">6L5-42647-00</a> Holder, clamp band	<a href="#">Buy now</a>
8	<a href="#">6L5-42823-00</a> Plate, stop	<a href="#">Buy now</a>
9	<a href="#">90167-03M02</a> Screw, tapping(615)	<a href="#">Buy now</a>
10	<a href="#">90480-22M72</a> Grommet	<a href="#">Buy now</a>
11	<a href="#">90161-05001</a> Screw, Tapping	<a href="#">Buy now</a>
12	<a href="#">90480-10004</a> Grommet	<a href="#">Buy now</a>
13	<a href="#">68D-G2731-00</a> Carring, handle	<a href="#">Buy now</a>
14	<a href="#">68D-G2735-00</a> Protector	<a href="#">Buy now</a>
15	<a href="#">67D-42662-00</a> Damper	<a href="#">Buy now</a>

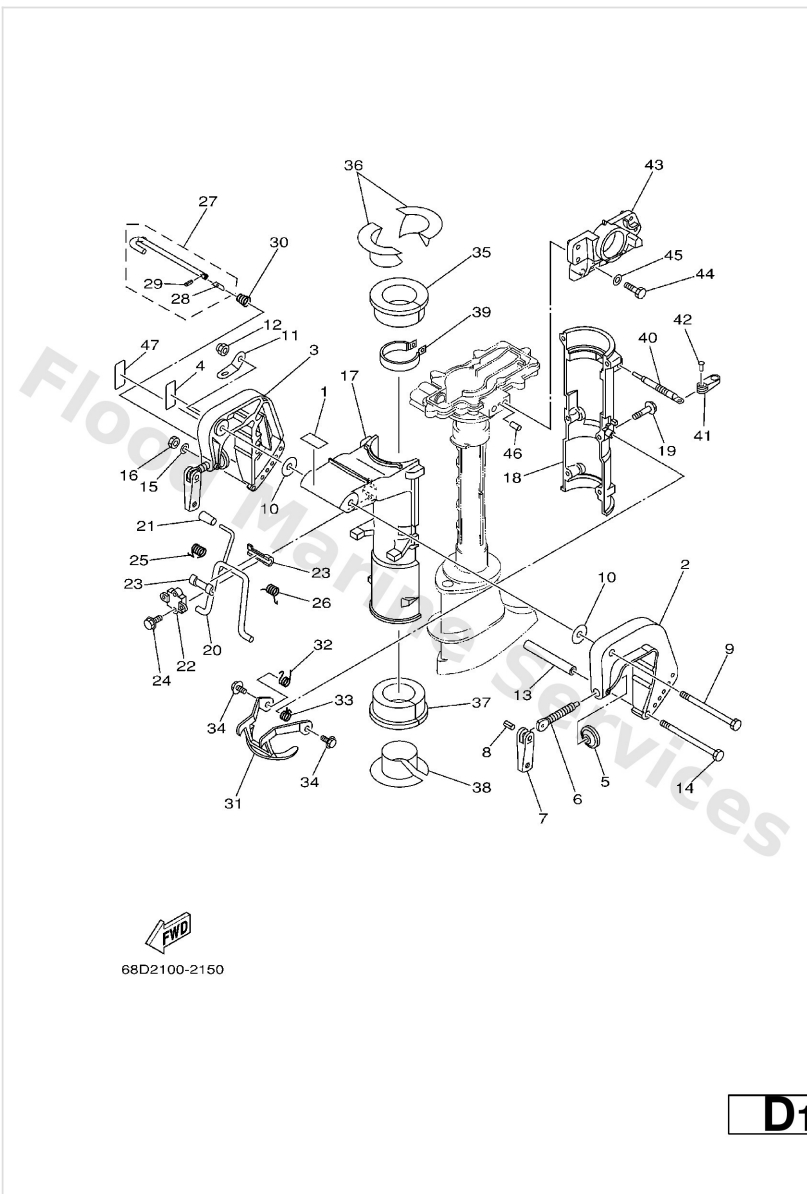
## Bottom Cowling



**C4**

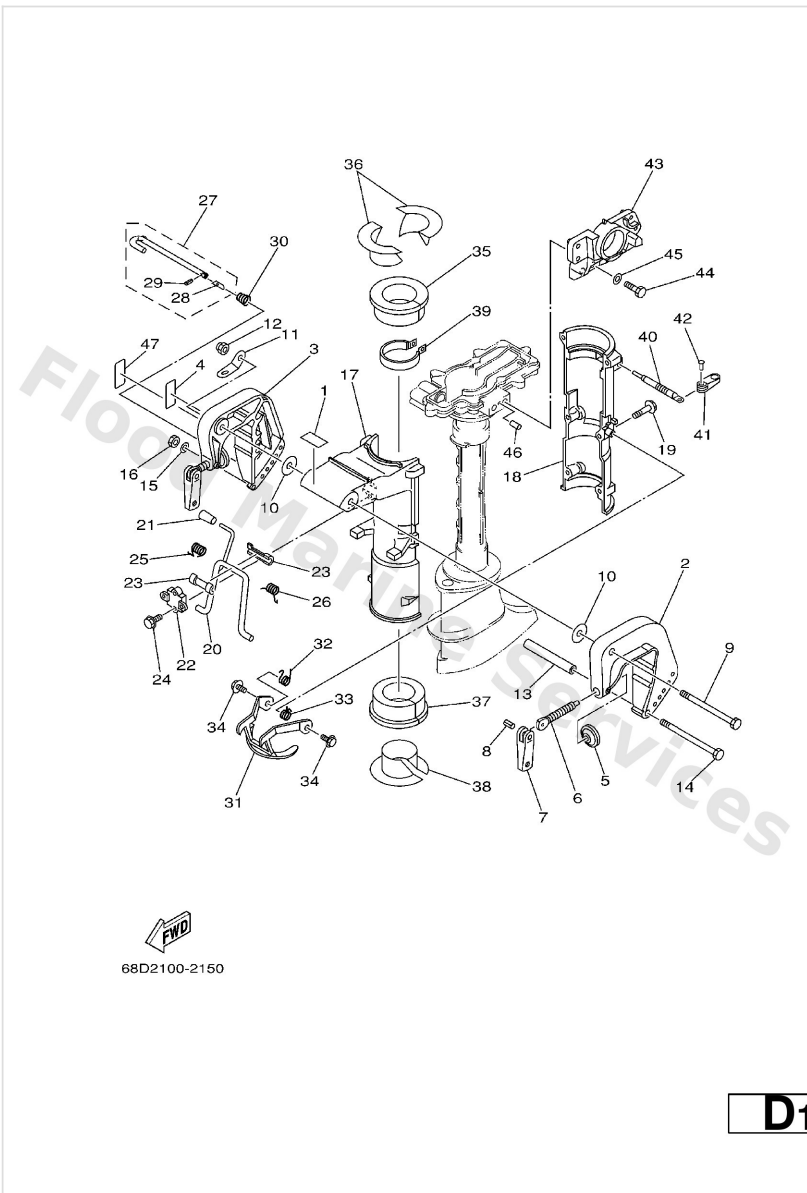
Ref	Part	
16	<a href="#">90119-06M79</a> Bolt, with washer	<a href="#">Buy now</a>
17	<a href="#">90464-07M50</a> Clamp	<a href="#">Buy now</a>
18	<a href="#">90464-07078</a> Clamp(81k)	<a href="#">Buy now</a>
19	<a href="#">67D-13444-40</a> Mark FOR USA,OCEANIA	<a href="#">Buy now</a>
19	<a href="#">67D-13444-50</a> Mark FOR CANADA,CARIB	<a href="#">Buy now</a>
20	<a href="#">68D-E2138-40</a> 12 – FOR USA,OCEANIA	<a href="#">Buy now</a>
20	<a href="#">68D-E2138-50</a> 12 – FOR CANADA	<a href="#">Buy now</a>
20	<a href="#">68D-E2138-60</a> 12 – FOR CARIB	<a href="#">Buy now</a>
21	<a href="#">68D-H257H-00</a> Plate, Mark FOR CARIB	<a href="#">Buy now</a>

# Bracket



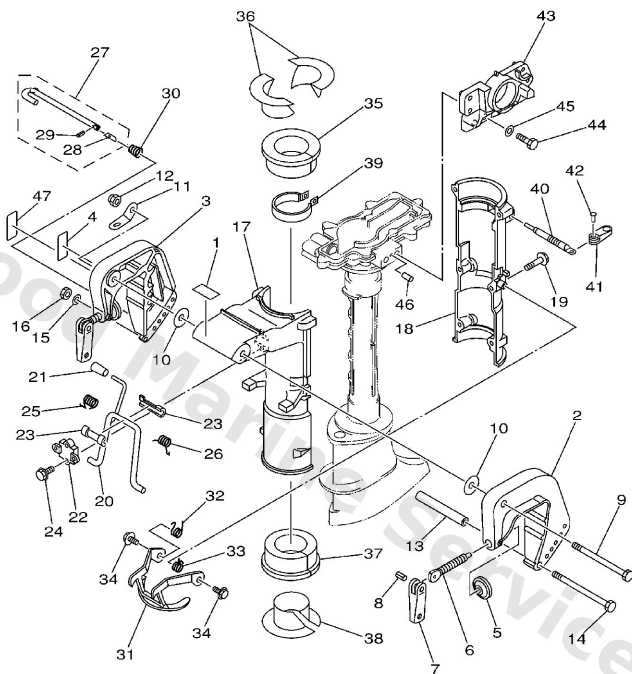
Ref	Part	
1	<a href="#">68D-F4591-00</a> Emblem, Fuel Cock	<a href="#">Buy now</a>
2	<a href="#">6L8-G3111-01-4D</a> Bracket, clamp 1	<a href="#">Buy now</a>
3	<a href="#">6L8-G3112-00-4D</a> Bracket, clamp 2	<a href="#">Buy now</a>
4	<a href="#">6M0-G3318-00</a> Cover	<a href="#">Buy now</a>
5	<a href="#">620-43114-00</a> Pad, transom clamp	<a href="#">Buy now</a>
6	<a href="#">6E0-43116-01</a> Screw, transom clamp	<a href="#">Buy now</a>
7	<a href="#">6L8-G3118-01</a> Handle, transom cl	<a href="#">Buy now</a>
8	<a href="#">90243-04M01</a> Pin(6a1)	<a href="#">Buy now</a>
9	<a href="#">90101-08M07</a> Bolt(6e0)	<a href="#">Buy now</a>
10	<a href="#">90202-08M58</a> Washer, plate	<a href="#">Buy now</a>
11	<a href="#">68D-G3113-00</a> Plate, clamp bracket	<a href="#">Buy now</a>
12	<a href="#">90185-08057</a> Nut, nylon (6j8)	<a href="#">Buy now</a>
13	<a href="#">90387-06M11</a> Collar	<a href="#">Buy now</a>
14	<a href="#">90101-06335</a> Bolt, hexagon (624)	<a href="#">Buy now</a>
15	<a href="#">92990-06600</a> Washer, plain (646)	<a href="#">Buy now</a>

# Bracket



Ref	Part	
16	<a href="#">95380-06600</a> Nut(661)	<a href="#">Buy now</a>
19	<a href="#">95895-06035</a> Bolt, flange(4nx)	<a href="#">Buy now</a>
20	<a href="#">6E0-43181-00</a> Lever, tilt stop 1	<a href="#">Buy now</a>
21	<a href="#">6E0-43632-00</a> Knob, tilt	<a href="#">Buy now</a>
22	<a href="#">6E0-43313-00-4D</a> Bracket, swivel 3	<a href="#">Buy now</a>
23	<a href="#">620-43189-00</a> Bushing	<a href="#">Buy now</a>
24	<a href="#">95895-06020</a> Bolt, flange(jk3)	<a href="#">Buy now</a>
25	<a href="#">90508-16020</a> Spring 6474319800	<a href="#">Buy now</a>
26	<a href="#">90508-16021</a> Spring 6474318800	<a href="#">Buy now</a>
27	<a href="#">68D-G3160-00</a> Tilt rod assembly	<a href="#">Buy now</a>
28	<a href="#">6N0-G3165-00</a> Plate, tilt lock	<a href="#">Buy now</a>
29	<a href="#">91690-30008</a> Pin. spring(656)	<a href="#">Buy now</a>
30	<a href="#">90502-08M05</a> Spring, conical(6e0)	<a href="#">Buy now</a>
31	<a href="#">6E0-43614-00-5B</a> Plate, tilt lock	<a href="#">Buy now</a>
32	<a href="#">90508-14M10</a> Spring, torsion (6e0)	<a href="#">Buy now</a>

# Bracket

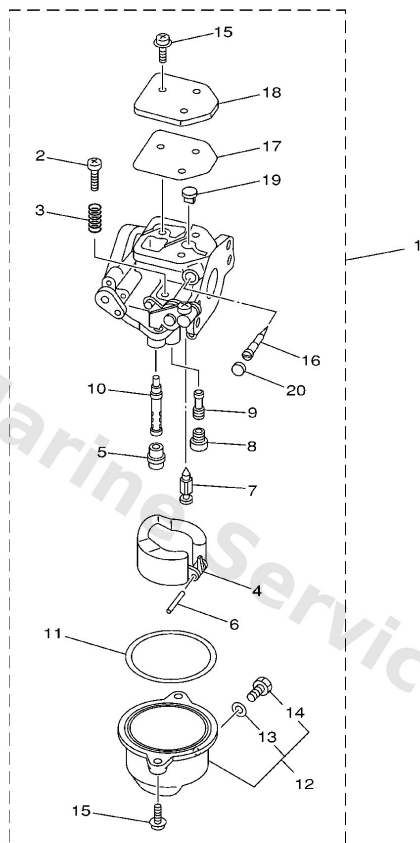


FWD  
68D2100-2150

**D1**

Ref	Part	
33	<a href="#">90508-14M11</a> Spring, torsion (6e0)	<a href="#">Buy now</a>
34	<a href="#">95895-06010</a> Bolt, flange(7ht)	<a href="#">Buy now</a>
35	<a href="#">68D-G2537-00</a> Bushing, pivot sha	<a href="#">Buy now</a>
36	<a href="#">68D-G2539-00</a> Bushing, pivot sha	<a href="#">Buy now</a>
37	<a href="#">68D-G2538-00</a> Bush Pivot Shaft 2	<a href="#">Buy now</a>
38	<a href="#">68D-G2549-00</a> Bush, pivot shaft 4	<a href="#">Buy now</a>
39	<a href="#">6E0-42528-03</a> Plate, friction	<a href="#">Buy now</a>
40	<a href="#">6L5-42529-01</a> Screw, friction piece	<a href="#">Buy now</a>
41	<a href="#">68D-G2561-01</a> Knob, steering loc	<a href="#">Buy now</a>
42	<a href="#">90266-04M05</a> Rivet(6l5)	<a href="#">Buy now</a>
44	<a href="#">97075-08030</a> Bolt, hexagon (fj1)	<a href="#">Buy now</a>
45	<a href="#">92995-08600</a> Washer, plain (663)	<a href="#">Buy now</a>
46	<a href="#">93604-12M07</a> Pin, dowel (688)	<a href="#">Buy now</a>
47	<a href="#">63V-82377-50</a> Label (Spark, Ignition) FOR CANADA	<a href="#">Buy now</a>

# Carburetor



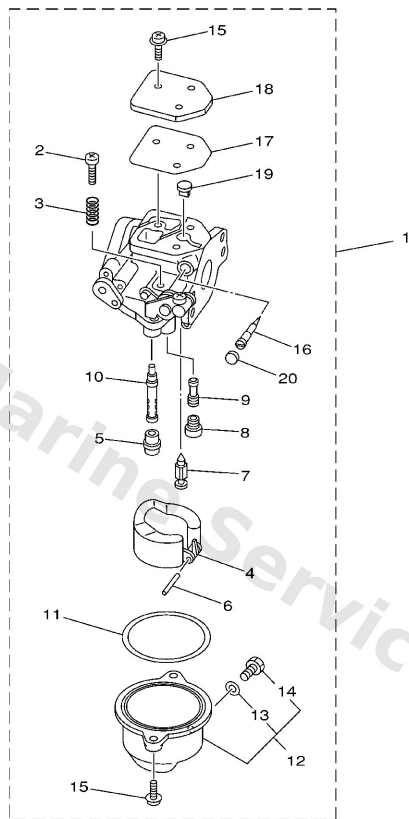
67D0100-8070

**B4**

Ref	Part	
1	<a href="#">67D-14301-01</a> Carburetor assembly 1 FOR OCEANIA	<a href="#">Buy now</a>
1	<a href="#">67D-14301-11</a> Carburetor assembly 1 EXCEPT	<a href="#">Buy now</a>
2	<a href="#">6E5-14321-00</a> Screw, throttle	<a href="#">Buy now</a>
3	<a href="#">6J8-14334-00</a> Spring, throttle	<a href="#">Buy now</a>
4	<a href="#">68T-14385-00</a> Float	<a href="#">Buy now</a>
5	<a href="#">67D-14966-00</a> Rubber cap	<a href="#">Buy now</a>
6	<a href="#">67D-14386-00</a> Pin, float	<a href="#">Buy now</a>
7	<a href="#">67D-14546-00</a> Valve, needle	<a href="#">Buy now</a>
8	<a href="#">67D-1492E-34</a> Jet, main (#68)	<a href="#">Buy now</a>
9	<a href="#">67D-1492F-18</a> Jet, air slow (#36)	<a href="#">Buy now</a>
10	<a href="#">67D-1492A-00</a> Nozzle, main	<a href="#">Buy now</a>
11	<a href="#">67D-14984-00</a> Gasket, float chamber	<a href="#">Buy now</a>
12	<a href="#">67D-14981-00</a> Body, float chamber	<a href="#">Buy now</a>
13	<a href="#">6J8-14959-00</a> Gasket, drain screw	<a href="#">Buy now</a>
14	<a href="#">66T-14991-00</a> Plug, drain	<a href="#">Buy now</a>



# Carburetor

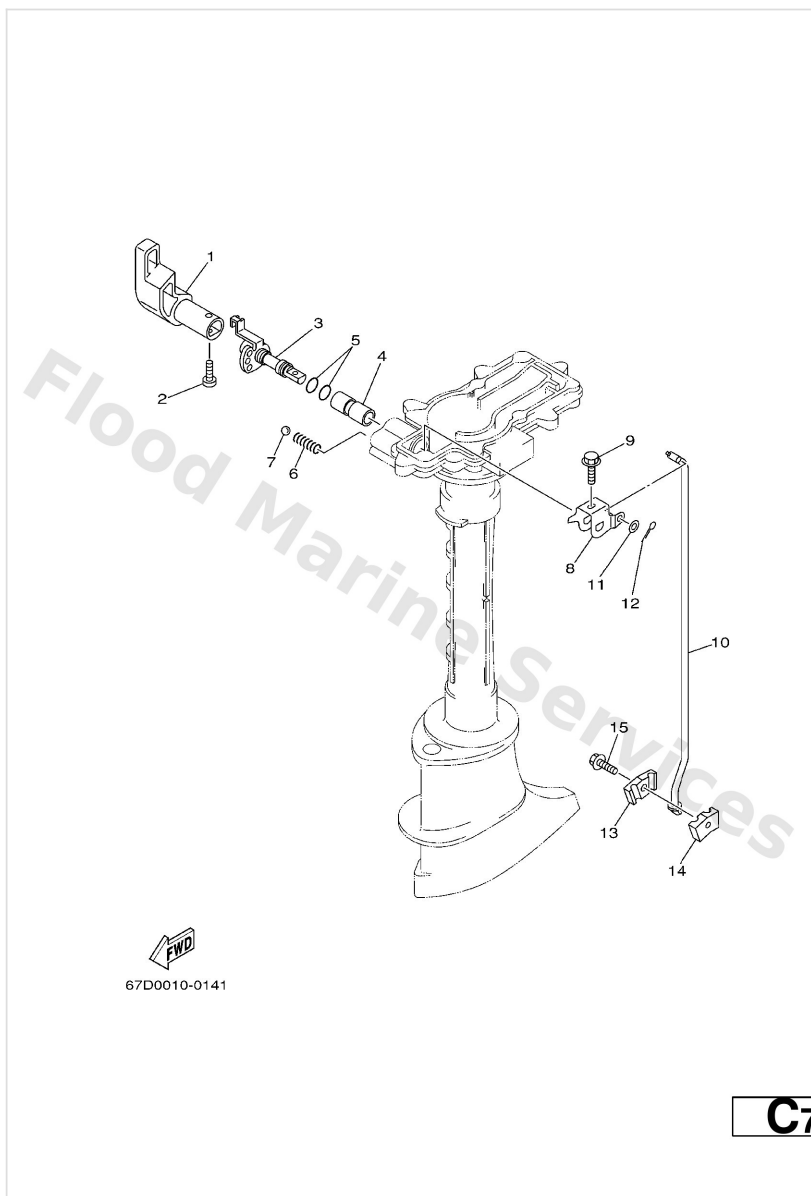


  
67D0100-8070

**B4**

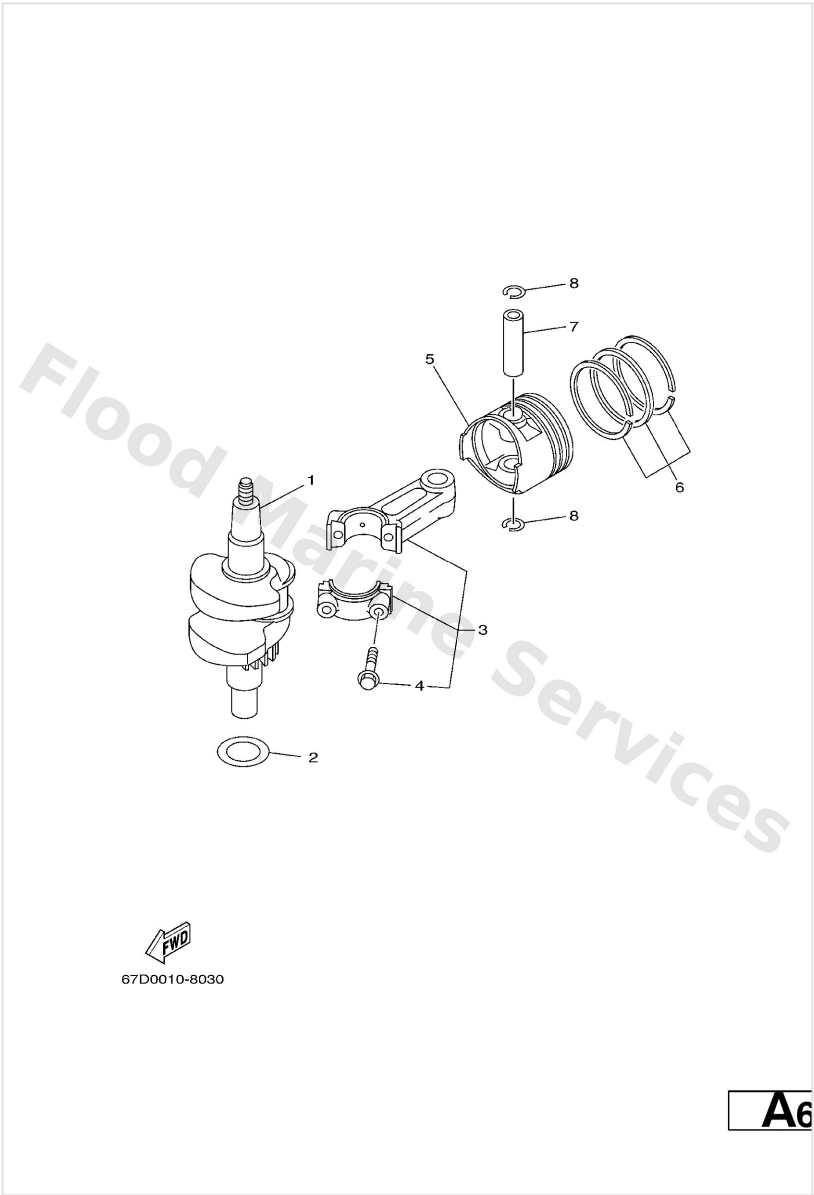
Ref	Part	
15	<a href="#">97980-04112</a> Screw, pan head (686)	<a href="#">Buy now</a>
16	<a href="#">67D-14323-00</a> Screw, air adjusting	<a href="#">Buy now</a>
17	<a href="#">67D-14536-00</a> Gasket	<a href="#">Buy now</a>
18	<a href="#">67D-14527-00</a> Plate	<a href="#">Buy now</a>
19	<a href="#">67D-14126-00</a> Plug	<a href="#">Buy now</a>
20	<a href="#">67D-1432A-00</a> Plug FOR 67D-14301-11	<a href="#">Buy now</a>

## Control



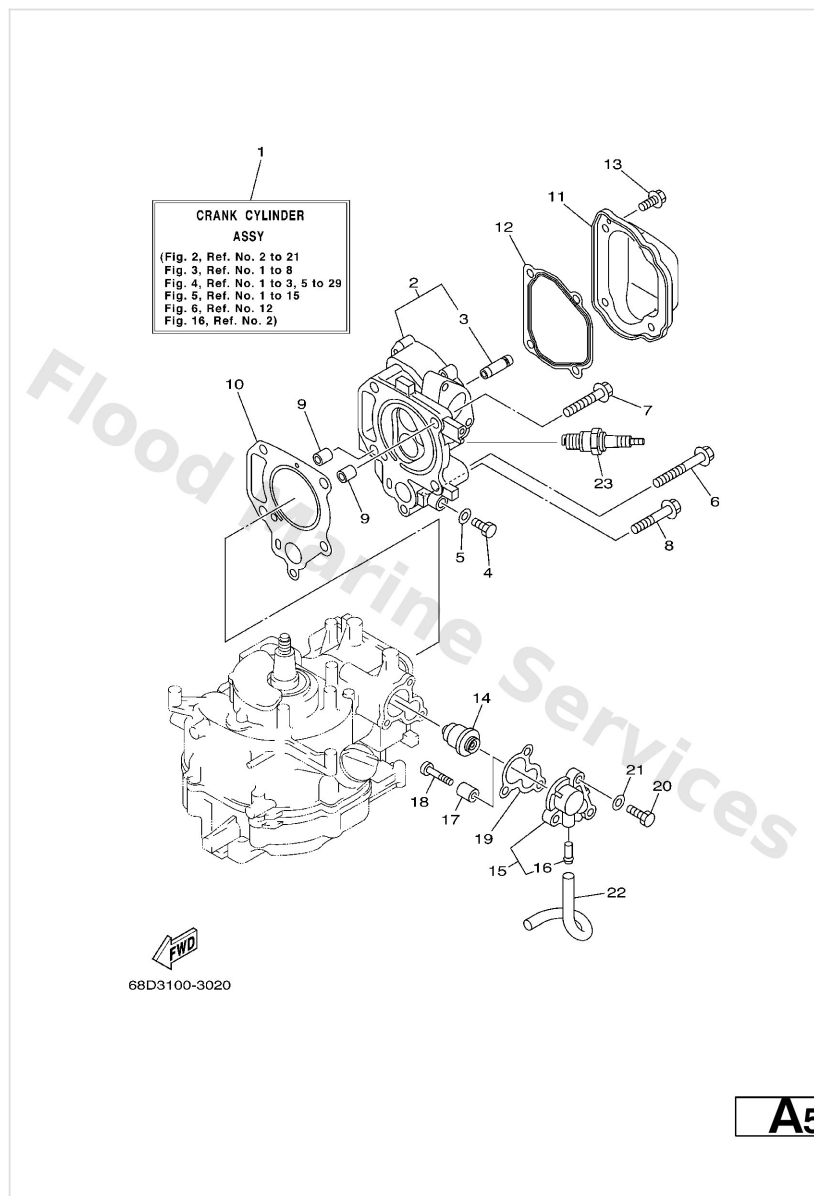
Ref	Part	
1	<a href="#">68D-G4111-00</a> Handle, gear shift	<a href="#">Buy now</a>
2	<a href="#">98680-05520</a> Ybs53-520 screw,flat head	<a href="#">Buy now</a>
3	<a href="#">68D-G4119-00</a> Shaft Change	<a href="#">Buy now</a>
4	<a href="#">68D-G4122-01</a> Bushing, shift rod lever	<a href="#">Buy now</a>
5	<a href="#">93210-09350</a> O-ring	<a href="#">Buy now</a>
6	<a href="#">90501-12274</a> Spring 6554411600	<a href="#">Buy now</a>
7	<a href="#">93505-16024</a> Ball	<a href="#">Buy now</a>
8	<a href="#">68D-G4121-00</a> Lever Shift Rod 1	<a href="#">Buy now</a>
9	<a href="#">90119-05M04</a> Bolt, with washer	<a href="#">Buy now</a>
10	<a href="#">67D-44143-01</a> Rod Shift	<a href="#">Buy now</a>
11	<a href="#">92990-05600</a> Washer, plain (646)	<a href="#">Buy now</a>
12	<a href="#">91490-16010</a> Pin, cotter	<a href="#">Buy now</a>
13	<a href="#">68D-G4145-00</a> Connector, shift rod 1	<a href="#">Buy now</a>
14	<a href="#">68D-G4146-00</a> Connector, shift rod 2	<a href="#">Buy now</a>
15	<a href="#">90119-06ME0</a> Bolt, with washer	<a href="#">Buy now</a>

# Crankshaft. Piston



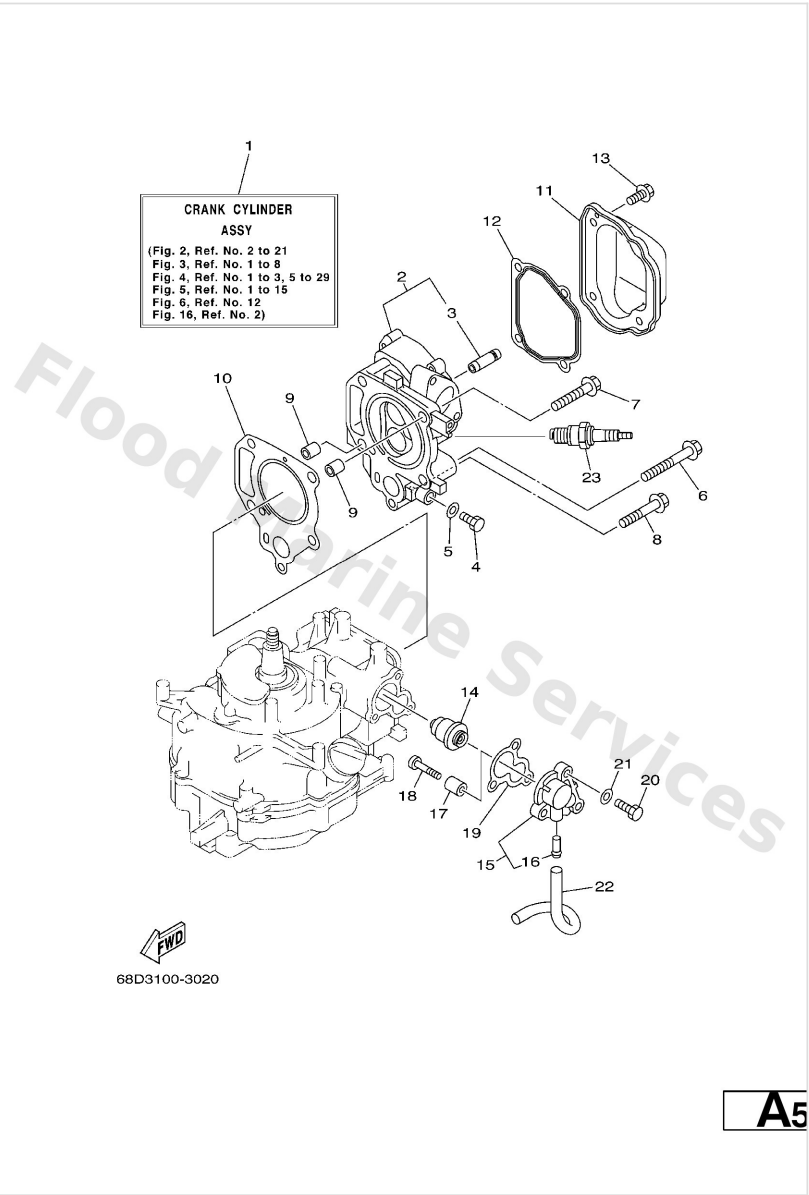
Ref	Part	
1	<a href="#">67D-11400-00</a> Crankshaft assembly	<a href="#">Buy now</a>
2	<a href="#">90201-266P2</a> Washer, plate(ja8)	<a href="#">Buy now</a>
3	<a href="#">67D-11650-00</a> Connecting rod kit	<a href="#">Buy now</a>
4	<a href="#">67D-11654-00</a> Bolt, connecting rod	<a href="#">Buy now</a>
5	<a href="#">68D-E1631-00-96</a> Piston (std)	<a href="#">Buy now</a>
5	<a href="#">68D-E1635-00</a> 3- AP	<a href="#">Buy now</a>
5	<a href="#">68D-E1636-00</a> 3- AP	<a href="#">Buy now</a>
6	<a href="#">68D-E1603-00</a> Piston ring (set)	<a href="#">Buy now</a>
6	<a href="#">68D-E1604-00</a> 3- AP	<a href="#">Buy now</a>
6	<a href="#">68D-E1605-00</a> 3- AP	<a href="#">Buy now</a>
7	<a href="#">68D-E1633-00</a> 3-	<a href="#">Buy now</a>
8	<a href="#">93450-14088</a> Circlip (22f)	<a href="#">Buy now</a>

# Cylinder. Crankcase 1



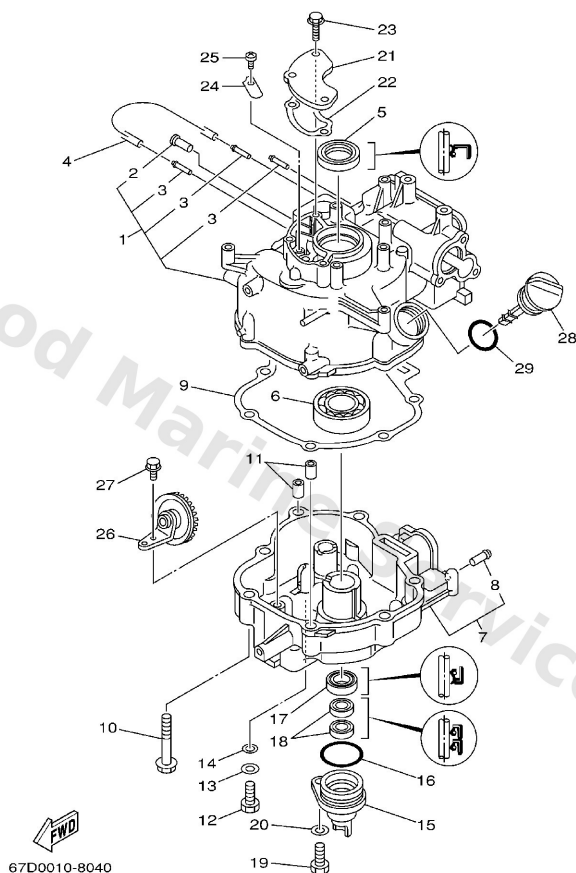
Ref	Part	
2	<a href="#">68D-E1111-10-94</a> Head Cylinder (F4)	<a href="#">Buy now</a>
3	<a href="#">67D-11133-10</a> Guide, valve 1	<a href="#">Buy now</a>
4	<a href="#">97095-08014</a> Bolt, hexagon deep recess	<a href="#">Buy now</a>
5	<a href="#">90430-08800</a> Gasket (256-11198-00)	<a href="#">Buy now</a>
6	<a href="#">90105-08M36</a> Bolt (6g8)	<a href="#">Buy now</a>
7	<a href="#">90105-08046</a> Bolt, flange	<a href="#">Buy now</a>
8	<a href="#">90105-06M25</a> Bolt (6g1)	<a href="#">Buy now</a>
9	<a href="#">99510-10114</a> Pin, dowel(3vd)	<a href="#">Buy now</a>
10	<a href="#">67D-11181-A0</a> Gasket, cylinder head 1	<a href="#">Buy now</a>
11	<a href="#">67D-11191-00</a> Cover, cylinder head 1	<a href="#">Buy now</a>
12	<a href="#">68D-E1193-A0</a> Gasket head cover	<a href="#">Buy now</a>
13	<a href="#">90105-06M14</a> Bolt (6e0)	<a href="#">Buy now</a>
14	<a href="#">66M-12411-00</a> Thermostat	<a href="#">Buy now</a>
16	<a href="#">650-24378-00</a> Pipe, joint 2	<a href="#">Buy now</a>
17	<a href="#">68D-E1325-00</a> Anode	<a href="#">Buy now</a>

# Cylinder. Crankcase 1



Ref	Part	
18	<a href="#">97880-05025</a> Screw, panhead (a93)	<a href="#">Buy now</a>
19	<a href="#">68D-E2414-A0</a> Gasket, cover	<a href="#">Buy now</a>
20	<a href="#">97095-06020</a> Bolt(7u8)	<a href="#">Buy now</a>
21	<a href="#">92995-06600</a> Washer, plain (646)	<a href="#">Buy now</a>
22	<a href="#">90445-09807</a> Hose (l180)	<a href="#">Buy now</a>
23	<a href="#">94702-00248</a> Plug, spark (br6hs)	<a href="#">Buy now</a>

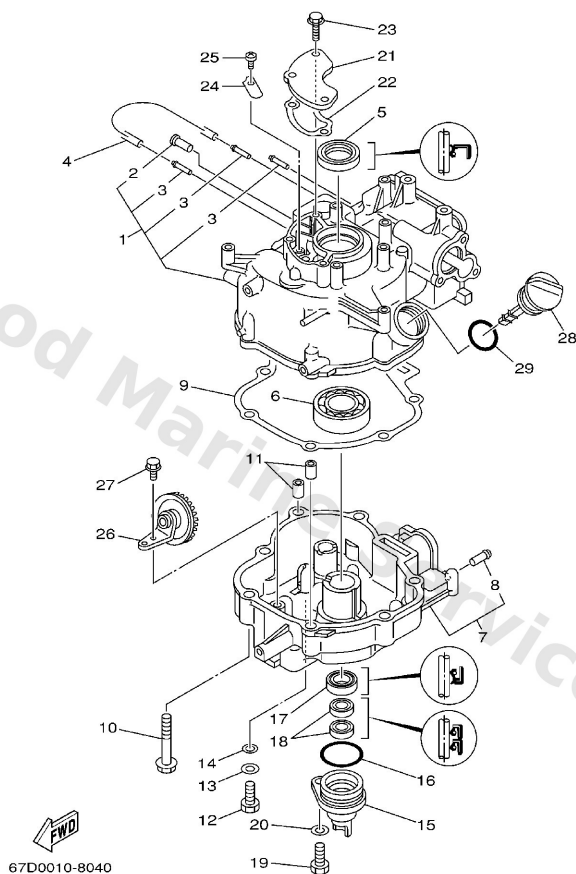
## Cylinder. Crankcase 2



**A7**

Ref	Part	
1	<a href="#">68D-E1311-01-94</a> Cylinder 1	<a href="#">Buy now</a>
2	<a href="#">650-24378-00</a> Pipe, joint 2	<a href="#">Buy now</a>
3	<a href="#">6H1-14485-00</a> Pipe, joint	<a href="#">Buy now</a>
4	<a href="#">90445-07806</a> Hose (I200)	<a href="#">Buy now</a>
5	<a href="#">93102-25090</a> Oil seal (25x40x5-256)	<a href="#">Buy now</a>
6	<a href="#">93306-205YD</a> Bearing (6k8)	<a href="#">Buy now</a>
7	<a href="#">68D-E5111-00-94</a> Crankcase 1	<a href="#">Buy now</a>
9	<a href="#">68D-11351-A0</a> Gasket, cylinder	<a href="#">Buy now</a>
10	<a href="#">97575-08550</a> Bolt, with washer	<a href="#">Buy now</a>
11	<a href="#">99510-10114</a> Pin, dowel(3vd)	<a href="#">Buy now</a>
12	<a href="#">97095-08020</a> Bolt, hexagon	<a href="#">Buy now</a>
13	<a href="#">92995-08600</a> Washer, plain (663)	<a href="#">Buy now</a>
14	<a href="#">90201-08818</a> Washer	<a href="#">Buy now</a>
15	<a href="#">68D-E5396-00-5B</a> Housing, oil seal	<a href="#">Buy now</a>
16	<a href="#">93210-35537</a> O-ring	<a href="#">Buy now</a>

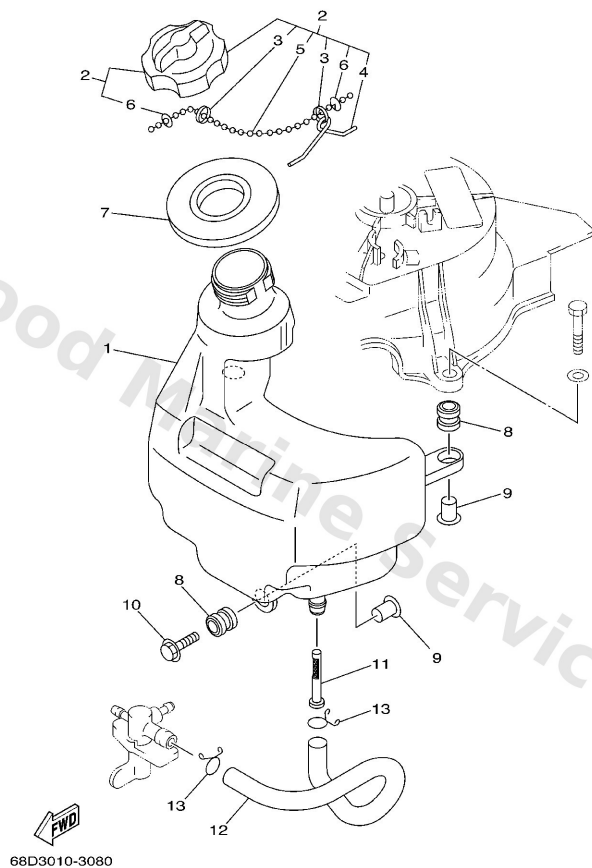
## Cylinder. Crankcase 2



**A7**

Ref	Part	
17	<a href="#">93102-20108</a> Oil seal	<a href="#">Buy now</a>
18	<a href="#">93102-10004</a> Oil seal	<a href="#">Buy now</a>
21	<a href="#">68D-E1168-00</a> Cover, Breather	<a href="#">Buy now</a>
22	<a href="#">68D-E1169-A0</a> 4-	<a href="#">Buy now</a>
23	<a href="#">90119-06M80</a> Bolt(gj3)	<a href="#">Buy now</a>
24	<a href="#">68D-E5346-00</a> Breather 1	<a href="#">Buy now</a>
25	<a href="#">98503-04006</a> Screw, pan head (7h3)	<a href="#">Buy now</a>
26	<a href="#">68D-E3102-00</a> Gear unit assembly	<a href="#">Buy now</a>
27	<a href="#">95817-06012</a> Bolt, flange	<a href="#">Buy now</a>
28	<a href="#">68D-E5362-00</a> Plug, oil level	<a href="#">Buy now</a>
29	<a href="#">93210-24M79</a> O-ring	<a href="#">Buy now</a>

# Fuel 1

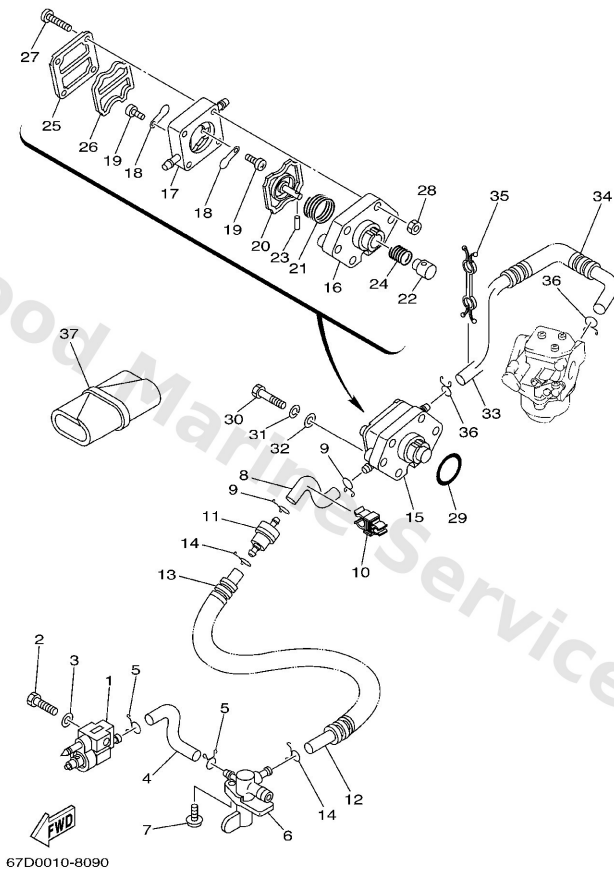


**B5**

Ref	Part	
1	<a href="#">68D-F4111-00</a> Tank, Fuel	<a href="#">Buy now</a>
2	<a href="#">67D-24610-02</a> Cap assembly	<a href="#">Buy now</a>
3	<a href="#">90501-10260</a> Spring, safety 6152463500	<a href="#">Buy now</a>
4	<a href="#">624-24634-00</a> Hook, chain ball	<a href="#">Buy now</a>
5	<a href="#">69M-24633-00</a> Chain, ball	<a href="#">Buy now</a>
6	<a href="#">6H1-21757-00</a> Washer, special 1	<a href="#">Buy now</a>
7	<a href="#">6L5-24641-00</a> Gasket, cap 1	<a href="#">Buy now</a>
8	<a href="#">6A0-82317-00</a> Damper, ignition coil	<a href="#">Buy now</a>
9	<a href="#">624-42542-00</a> Collar	<a href="#">Buy now</a>
10	<a href="#">90119-06M88</a> Bolt, with washer	<a href="#">Buy now</a>
11	<a href="#">6L5-24251-00</a> Strainer 1	<a href="#">Buy now</a>
12	<a href="#">68D-F4311-00</a> Pipe, Fuel 1	<a href="#">Buy now</a>
13	<a href="#">90467-13M13</a> Clip(6m6)	<a href="#">Buy now</a>



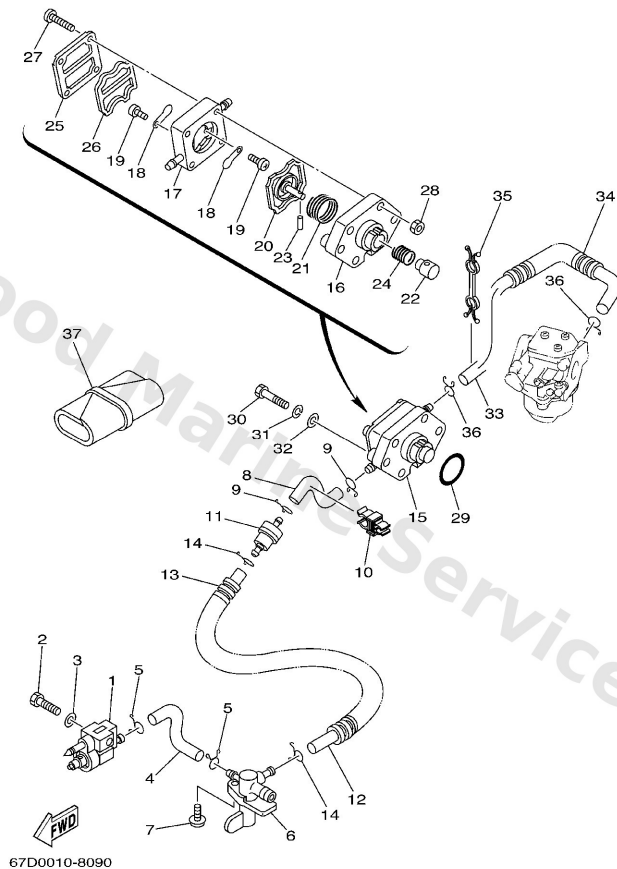
## Fuel 2



**B6**

Ref	Part	
1	<a href="#">6G1-24304-02</a> Fuel pipe joint comp. 1	<a href="#">Buy now</a>
2	<a href="#">97095-06025</a> Bolt	<a href="#">Buy now</a>
3	<a href="#">92995-06600</a> Washer, plain (646)	<a href="#">Buy now</a>
4	<a href="#">68D-F4312-00</a> 9-	<a href="#">Buy now</a>
5	<a href="#">90467-09M09</a> Clip(6k8)	<a href="#">Buy now</a>
6	<a href="#">68D-F4500-00</a> Fuel cock assembly 1	<a href="#">Buy now</a>
7	<a href="#">90159-06M10</a> Screw, with washer(6I5)	<a href="#">Buy now</a>
8	<a href="#">68D-F4313-00</a> Pipe 3	<a href="#">Buy now</a>
10	<a href="#">90464-10M52</a> Clamp	<a href="#">Buy now</a>
11	<a href="#">646-24251-02</a> Strainer 1	<a href="#">Buy now</a>
12	<a href="#">90445-10804</a> Hose (I400)	<a href="#">Buy now</a>
13	<a href="#">90446-14M12</a> Hose(6tc)	<a href="#">Buy now</a>
15	<a href="#">67D-24410-02</a> Fuel pump assembly	<a href="#">Buy now</a>
16	<a href="#">67D-24412-00</a> Body 1	<a href="#">Buy now</a>
17	<a href="#">67D-24413-02</a> Body 2	<a href="#">Buy now</a>

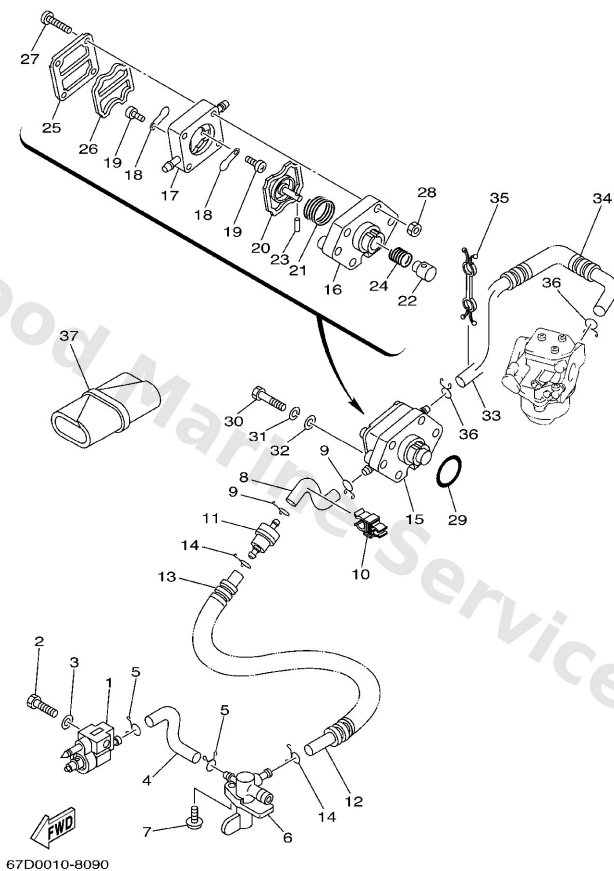
## Fuel 2



**B6**

Ref	Part	
18	<a href="#">6A0-24421-01</a> Valve, check	<a href="#">Buy now</a>
19	<a href="#">6E7-14325-00</a> Screw, pan head	<a href="#">Buy now</a>
20	<a href="#">67D-24411-00</a> Diaphragm	<a href="#">Buy now</a>
21	<a href="#">67D-24423-00</a> Spring, diaphragm	<a href="#">Buy now</a>
22	<a href="#">67D-13131-00</a> Plunger	<a href="#">Buy now</a>
23	<a href="#">66M-24374-00</a> Pin	<a href="#">Buy now</a>
24	<a href="#">67D-24454-00</a> Spring	<a href="#">Buy now</a>
25	<a href="#">67D-24414-01</a> Body 3	<a href="#">Buy now</a>
26	<a href="#">66M-24471-00</a> Diaphragm	<a href="#">Buy now</a>
27	<a href="#">67D-24444-00</a> Screw	<a href="#">Buy now</a>
28	<a href="#">9538004600</a> Nut,hex	<a href="#">Buy now</a>
29	<a href="#">93210-27ME3</a> O-ring	<a href="#">Buy now</a>
30	<a href="#">97095-06030</a> Bolt(jf7)	<a href="#">Buy now</a>
31	<a href="#">92995-06100</a> Washer(6a1)	<a href="#">Buy now</a>
33	<a href="#">90445-10805</a> Hose (l400)	<a href="#">Buy now</a>

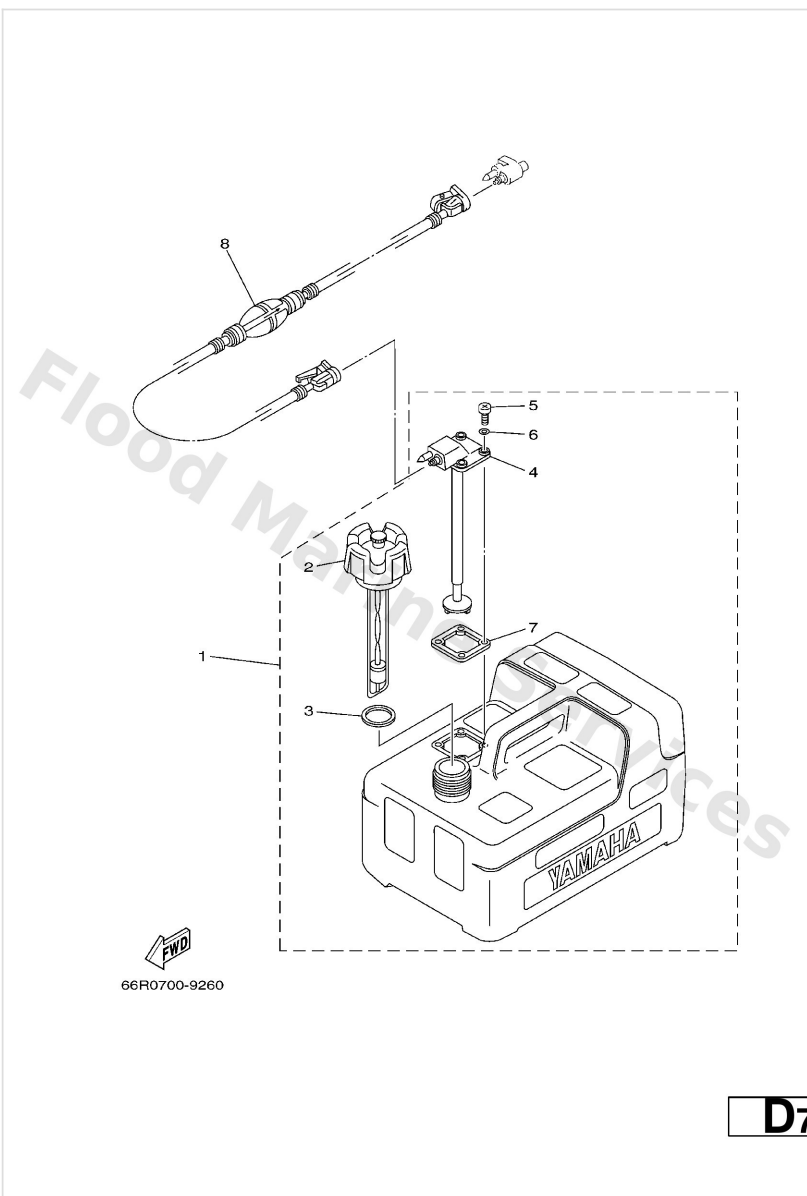
## Fuel 2



**B6**

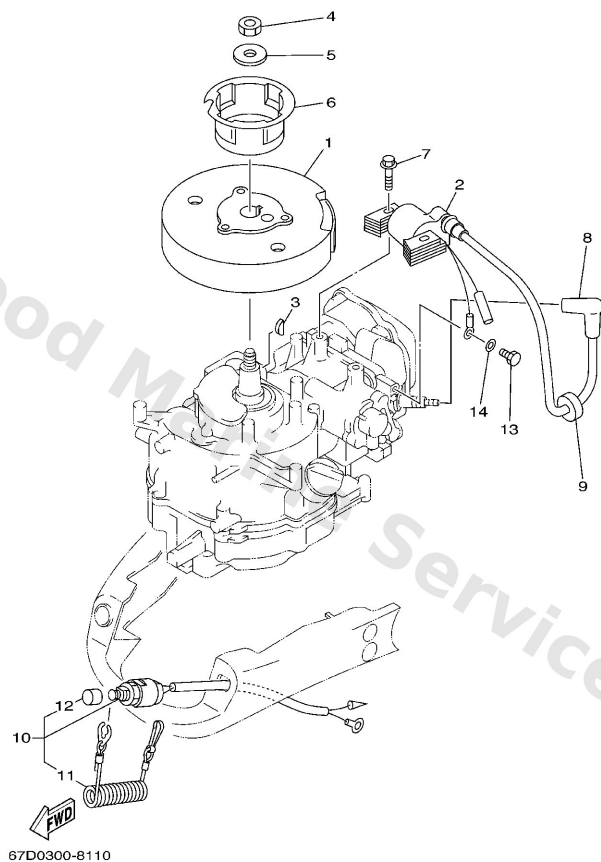
Ref	Part	
35	<a href="#">90464-10M53</a> Clamp	<a href="#">Buy now</a>
37	<a href="#">68D-F8100-00</a> Tool Kit FOR CARIB	<a href="#">Buy now</a>

# Fuel Tank



Ref	Part	
1	<a href="#">6YL-F4201-02</a> 19 – AP FOR CANADA	<a href="#">Buy now</a>
2	<a href="#">6YL-F4610-00</a> Cap assembly	<a href="#">Buy now</a>
3	<a href="#">6YL-F4641-00</a> Gasket, cap 1	<a href="#">Buy now</a>
4	<a href="#">6YL-F4260-01</a> Fuel meter assembly	<a href="#">Buy now</a>
5	<a href="#">90157-05811</a> Screw, pan head	<a href="#">Buy now</a>
6	<a href="#">6YL-F4329-00</a> Seal	<a href="#">Buy now</a>
7	<a href="#">6YL-F4268-01</a> Gasket, fuel meter	<a href="#">Buy now</a>
8	<a href="#">6YL-24306-52</a> Fuel pipe comp. 1 AP FOR CANADA	<a href="#">Buy now</a>

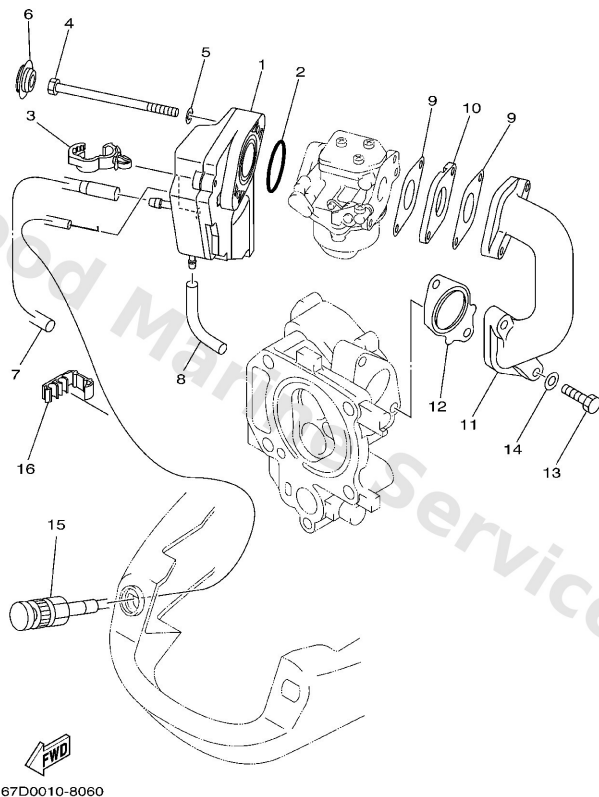
# Generator



**C3**

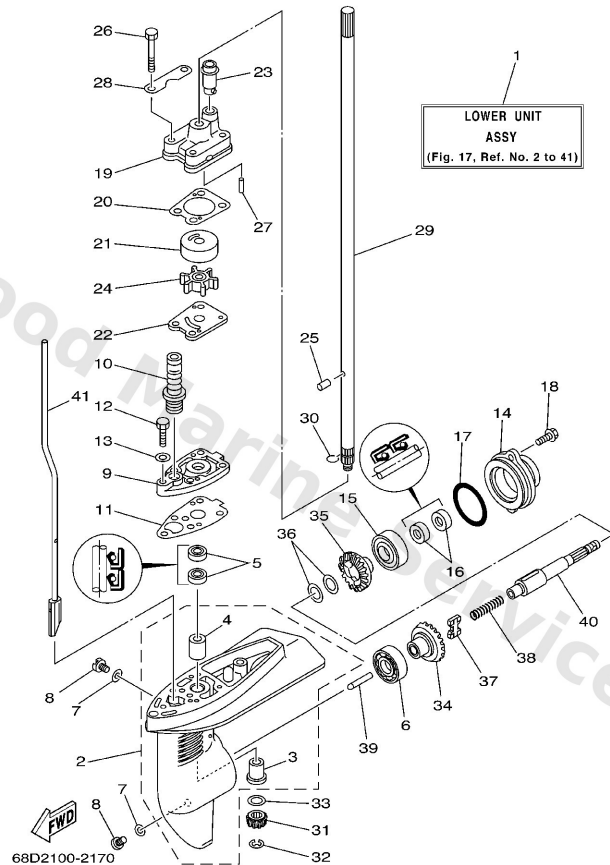
Ref	Part	
1	<a href="#">67D-85650-00</a> Rotor assembly	<a href="#">Buy now</a>
2	<a href="#">67D-85640-00</a> T.c.i. unit assembly	<a href="#">Buy now</a>
3	<a href="#">90280-04M06</a> Key, woodruff(6a1)	<a href="#">Buy now</a>
4	<a href="#">90170-10M33</a> Nut(6a1)	<a href="#">Buy now</a>
5	<a href="#">90201-105A2</a> Washer, plate (4x7)	<a href="#">Buy now</a>
6	<a href="#">67D-15723-00</a> Pulley Starter	<a href="#">Buy now</a>
7	<a href="#">90105-06M24</a> Bolt (6g1)	<a href="#">Buy now</a>
8	<a href="#">6E3-82370-21</a> Plug cap assembly	<a href="#">Buy now</a>
9	<a href="#">90480-25161</a> Grommet(656)	<a href="#">Buy now</a>
10	<a href="#">67D-82575-00</a> Engine stop switch assembly	<a href="#">Buy now</a>
11	<a href="#">682-82556-00</a> Lanyard, stop switch	<a href="#">Buy now</a>
12	<a href="#">689-8257Y-00</a> Cap	<a href="#">Buy now</a>
13	<a href="#">97095-06012</a> Bolt(gh1)	<a href="#">Buy now</a>
14	<a href="#">92995-06600</a> Washer, plain (646)	<a href="#">Buy now</a>

# Intake



Ref	Part	
1	<a href="#">68D-E4440-00</a> Silencer assembly, Intake	<a href="#">Buy now</a>
2	<a href="#">93210-31MJ5</a> O-ring	<a href="#">Buy now</a>
3	<a href="#">90464-13249</a> Clamp	<a href="#">Buy now</a>
4	<a href="#">97095-06090</a> Bolt(62y)	<a href="#">Buy now</a>
5	<a href="#">92995-06600</a> Washer, plain (646)	<a href="#">Buy now</a>
6	<a href="#">90480-18M74</a> Grommet	<a href="#">Buy now</a>
7	<a href="#">68D-F4314-00</a> Pipe 4	<a href="#">Buy now</a>
8	<a href="#">90445-07805</a> Hose (I200)	<a href="#">Buy now</a>
9	<a href="#">68D-E3646-A0</a> Gasket Int. Manifold	<a href="#">Buy now</a>
10	<a href="#">68D-E3647-00</a> Gasket, Manifold 3	<a href="#">Buy now</a>
11	<a href="#">68D-E3641-00-94</a> Manifold, Intake 1	<a href="#">Buy now</a>
12	<a href="#">68D-E3645-A0</a> Gasket int. manifold	<a href="#">Buy now</a>
13	<a href="#">97095-06025</a> Bolt	<a href="#">Buy now</a>
15	<a href="#">68D-F6330-00</a> Wire starter	<a href="#">Buy now</a>
16	<a href="#">90464-05122</a> Clamp	<a href="#">Buy now</a>

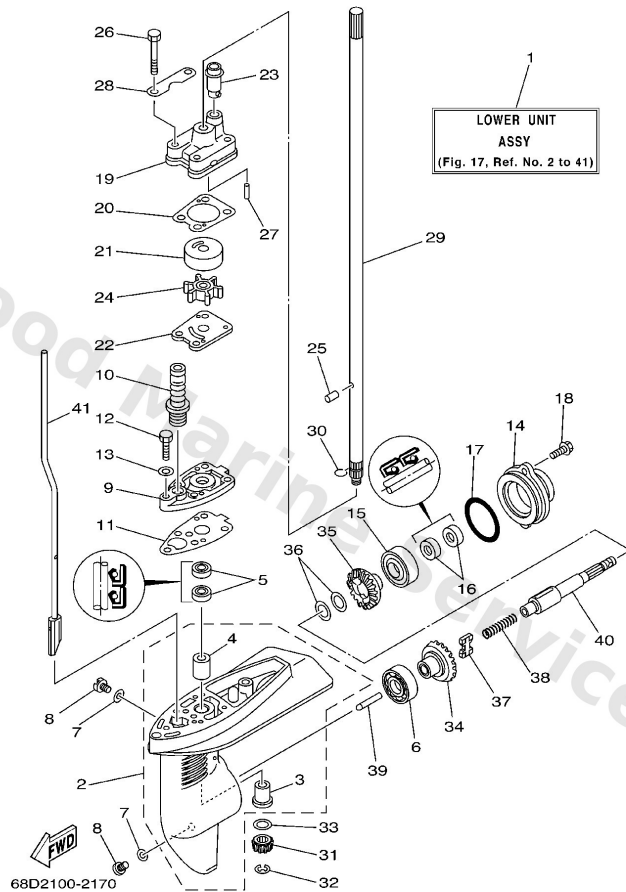
## Lower Casing. Drive 1



**D4**

Ref	Part	
3	<a href="#">6E0-45317-09</a> Bushing	<a href="#">Buy now</a>
4	<a href="#">6E0-45316-09</a> Bushing	<a href="#">Buy now</a>
5	<a href="#">93101-10M14</a> Oil seal	<a href="#">Buy now</a>
6	<a href="#">93306-004YH</a> Bearing (7k2)	<a href="#">Buy now</a>
7	<a href="#">90430-08801</a> Gasket	<a href="#">Buy now</a>
8	<a href="#">90340-08002</a> Plug, straight screw	<a href="#">Buy now</a>
9	<a href="#">68D-G5321-00</a> Plate	<a href="#">Buy now</a>
10	<a href="#">6L2-44147-00</a> Boot, shift rod	<a href="#">Buy now</a>
11	<a href="#">68D-G5315-A0</a> Packing, lower cas	<a href="#">Buy now</a>
12	<a href="#">97095-06025</a> Bolt	<a href="#">Buy now</a>
13	<a href="#">92995-06600</a> Washer, plain (646)	<a href="#">Buy now</a>
16	<a href="#">93101-13M12</a> Oil seal	<a href="#">Buy now</a>
17	<a href="#">93210-48214</a> O-ring	<a href="#">Buy now</a>
18	<a href="#">95895-06016</a> Bolt, flange deep recess	<a href="#">Buy now</a>
19	<a href="#">68D-G4311-01</a> Housing water pump	<a href="#">Buy now</a>

## Lower Casing. Drive 1

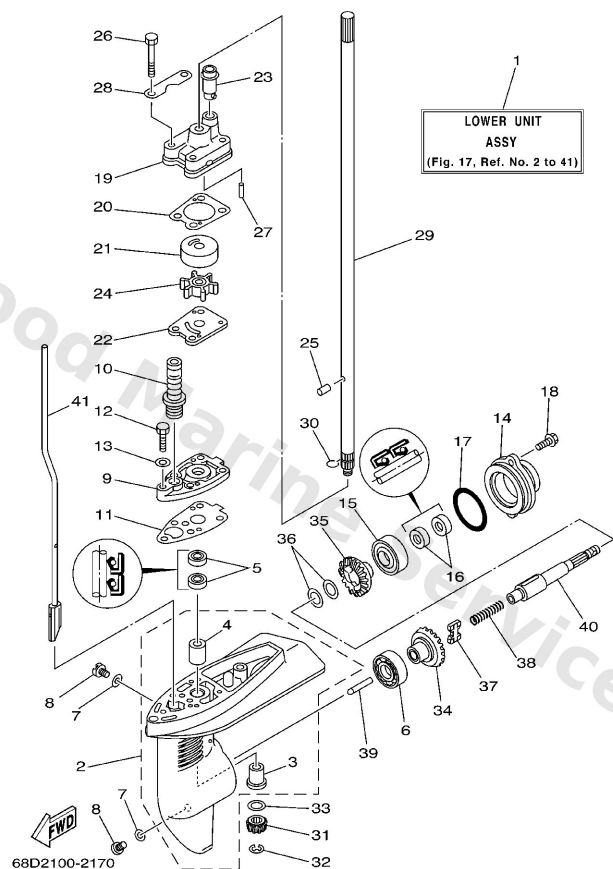


**D4**

Ref	Part	
20	<a href="#">68D-G4315-A0</a> Gasket, water pump	<a href="#">Buy now</a>
21	<a href="#">68D-G4322-00</a> Insert, cartridge	<a href="#">Buy now</a>
22	<a href="#">6E0-44323-00</a> Outer plate, cartridge	<a href="#">Buy now</a>
23	<a href="#">67D-44366-00</a> Damper, water seal 2	<a href="#">Buy now</a>
24	<a href="#">6E0-44352-00</a> Impeller	<a href="#">Buy now</a>
25	<a href="#">93604-09066</a> Pin, dowel	<a href="#">Buy now</a>
26	<a href="#">97095-06045</a> Bolt, hexagon	<a href="#">Buy now</a>
27	<a href="#">93604-18080</a> Pin, dowel. (647)	<a href="#">Buy now</a>
28	<a href="#">68D-G4328-00</a> Plate	<a href="#">Buy now</a>
29	<a href="#">68D-G5511-00</a> Shaft, drive S	<a href="#">Buy now</a>
29	<a href="#">68D-G5511-10</a> Shaft, drive L	<a href="#">Buy now</a>
30	<a href="#">90467-08M01</a> Clip (6e0)	<a href="#">Buy now</a>
31	<a href="#">6E0-45551-00</a> Pinion (13t)	<a href="#">Buy now</a>
32	<a href="#">99001-06600</a> Circlip(53l)	<a href="#">Buy now</a>
33	<a href="#">90201-11M49</a> Washer, plate (6e0)	<a href="#">Buy now</a>



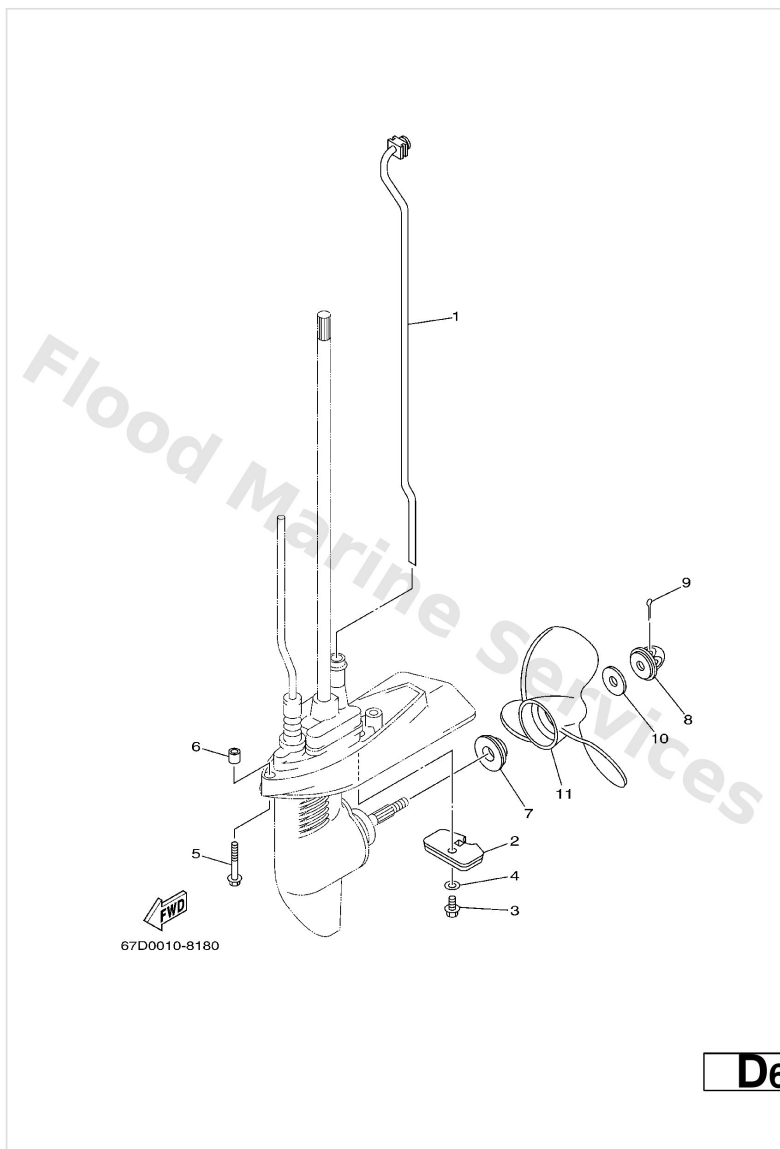
## Lower Casing. Drive 1



**D4**

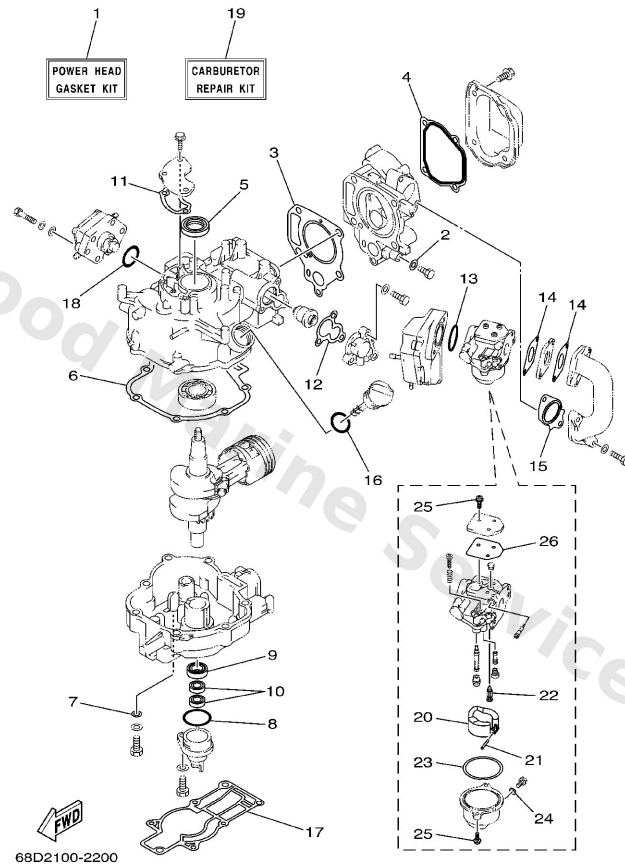
Ref	Part	
34	<a href="#">67D-45560-00</a> Gear	<a href="#">Buy now</a>
35	<a href="#">67D-45570-00</a> Gear	<a href="#">Buy now</a>
36	<a href="#">67D-45576-00</a> Washer, thrust 2	<a href="#">Buy now</a>
37	<a href="#">67D-45631-01</a> Clutch, dog	<a href="#">Buy now</a>
38	<a href="#">90501-10064</a> Spring, compression 6164563600	<a href="#">Buy now</a>
39	<a href="#">67D-45635-00</a> Plunger, shift	<a href="#">Buy now</a>
40	<a href="#">68D-G5611-10</a> Shaft, propeller	<a href="#">Buy now</a>
41	<a href="#">68D-G4150-00</a> Shift cam assembly S	<a href="#">Buy now</a>
41	<a href="#">68D-G4150-10</a> Shift cam assembly L	<a href="#">Buy now</a>

## Lower Casing. Drive 2



Ref	Part	
1	<a href="#">68D-G4360-00</a> Water Tube assembly S	<a href="#">Buy now</a>
1	<a href="#">68D-G4360-10</a> Water tube assembly L	<a href="#">Buy now</a>
2	<a href="#">68D-G5251-00</a> Anode	<a href="#">Buy now</a>
3	<a href="#">95895-06012</a> Bolt, flange deep recess	<a href="#">Buy now</a>
4	<a href="#">92990-06300</a> Washer, tooth	<a href="#">Buy now</a>
5	<a href="#">90119-06M40</a> Bolt, with washer S	<a href="#">Buy now</a>
6	<a href="#">90387-06806</a> Collar(6e0)	<a href="#">Buy now</a>
7	<a href="#">68D-G5987-00</a> Spacer 1	<a href="#">Buy now</a>
8	<a href="#">6L5-45616-00</a> Nut, propeller	<a href="#">Buy now</a>
9	<a href="#">91490-25030</a> Pin, cotter(6I5)	<a href="#">Buy now</a>
10	<a href="#">90201-08M54</a> Washer, plate (6e5)	<a href="#">Buy now</a>
11	<a href="#">6E0-45941-01-EL</a> Propeller (3x7-1/2 x8 -ba) UR	<a href="#">Buy now</a>
11	<a href="#">6E0-45943-01-EL</a> Propeller (3x7-1/2"x7"-ba) UR	<a href="#">Buy now</a>
11	<a href="#">6E0-45949-00-EL</a> Propeller (3x7-1/4 x6-1/2 -ba) UR	<a href="#">Buy now</a>

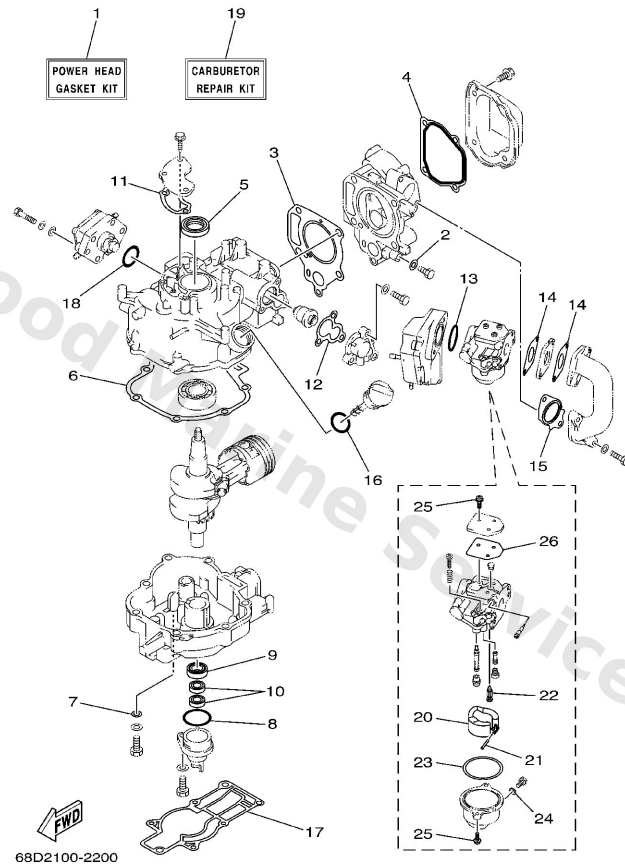
# Repair Kit 1



**E1**

Ref	Part	
1	<a href="#">68D-WE001-00</a> Power head gasket kit	<a href="#">Buy now</a>
2	<a href="#">90430-08800</a> Gasket (256-11198-00)	<a href="#">Buy now</a>
3	<a href="#">67D-11181-A0</a> Gasket, cylinder head 1	<a href="#">Buy now</a>
4	<a href="#">68D-E1193-A0</a> Gasket head cover	<a href="#">Buy now</a>
5	<a href="#">93102-25090</a> Oil seal (25x40x5-256)	<a href="#">Buy now</a>
6	<a href="#">68D-11351-A0</a> Gasket, cylinder	<a href="#">Buy now</a>
7	<a href="#">90201-08818</a> Washer	<a href="#">Buy now</a>
8	<a href="#">93210-35537</a> O-ring	<a href="#">Buy now</a>
9	<a href="#">93102-20108</a> Oil seal	<a href="#">Buy now</a>
10	<a href="#">93102-10004</a> Oil seal	<a href="#">Buy now</a>
11	<a href="#">68D-E1169-A0</a> 4-	<a href="#">Buy now</a>
12	<a href="#">68D-E2414-A0</a> Gasket, cover	<a href="#">Buy now</a>
13	<a href="#">93210-31MJ5</a> O-ring	<a href="#">Buy now</a>
14	<a href="#">68D-E3646-A0</a> Gasket Int. Manifold	<a href="#">Buy now</a>
15	<a href="#">68D-E3645-A0</a> Gasket int. manifold	<a href="#">Buy now</a>

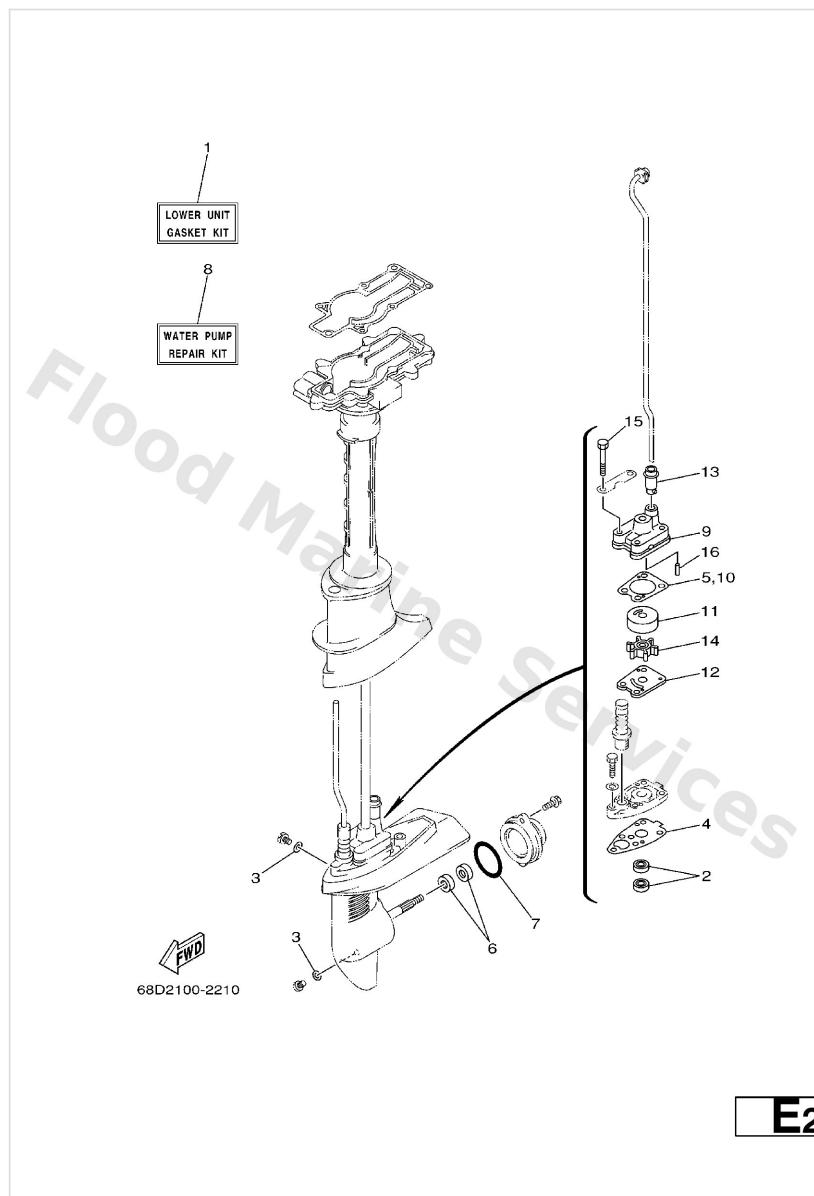
# Repair Kit 1



**E1**

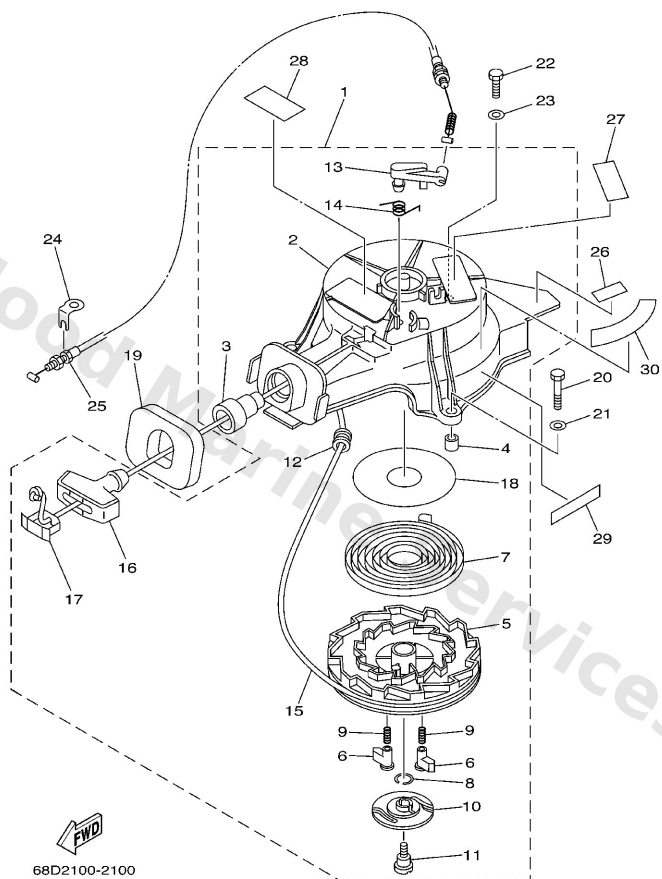
Ref	Part	
16	<a href="#">93210-24M79</a> O-ring	<a href="#">Buy now</a>
17	<a href="#">68D-G5113-A0</a> Gasket, upper casing	<a href="#">Buy now</a>
18	<a href="#">93210-27ME3</a> O-ring	<a href="#">Buy now</a>
19	<a href="#">67D-W0093-01</a> Carburetor repair kit	<a href="#">Buy now</a>
20	<a href="#">68T-14385-00</a> Float	<a href="#">Buy now</a>
21	<a href="#">67D-14386-00</a> Pin, float	<a href="#">Buy now</a>
22	<a href="#">67D-14546-00</a> Valve, needle	<a href="#">Buy now</a>
23	<a href="#">67D-14984-00</a> Gasket, float chamber	<a href="#">Buy now</a>
24	<a href="#">6J8-14959-00</a> Gasket, drain screw	<a href="#">Buy now</a>
25	<a href="#">97980-04112</a> Screw, pan head (686)	<a href="#">Buy now</a>
26	<a href="#">67D-14536-00</a> Gasket	<a href="#">Buy now</a>

## Repair Kit 2



Ref	Part	
1	<a href="#">6E0-W0001-C1</a> Lower unit gasket kit	<a href="#">Buy now</a>
2	<a href="#">93101-10M14</a> Oil seal	<a href="#">Buy now</a>
3	<a href="#">90430-08801</a> Gasket	<a href="#">Buy now</a>
4	<a href="#">68D-G5315-A0</a> Packing, lower cas	<a href="#">Buy now</a>
5	<a href="#">68D-G4315-A0</a> Gasket, water pump	<a href="#">Buy now</a>
6	<a href="#">93101-13M12</a> Oil seal	<a href="#">Buy now</a>
7	<a href="#">93210-48214</a> O-ring	<a href="#">Buy now</a>
8	<a href="#">68D-WG078-00</a> Water Pump Repair Kit	<a href="#">Buy now</a>
9	<a href="#">68D-G4311-01</a> Housing water pump	<a href="#">Buy now</a>
11	<a href="#">68D-G4322-00</a> Insert, cartridge	<a href="#">Buy now</a>
12	<a href="#">6E0-44323-00</a> Outer plate, cartridge	<a href="#">Buy now</a>
13	<a href="#">67D-44366-00</a> Damper, water seal 2	<a href="#">Buy now</a>
14	<a href="#">6E0-44352-00</a> Impeller	<a href="#">Buy now</a>
15	<a href="#">97095-06045</a> Bolt, hexagon	<a href="#">Buy now</a>
16	<a href="#">93604-18080</a> Pin. dowel. (647)	<a href="#">Buy now</a>

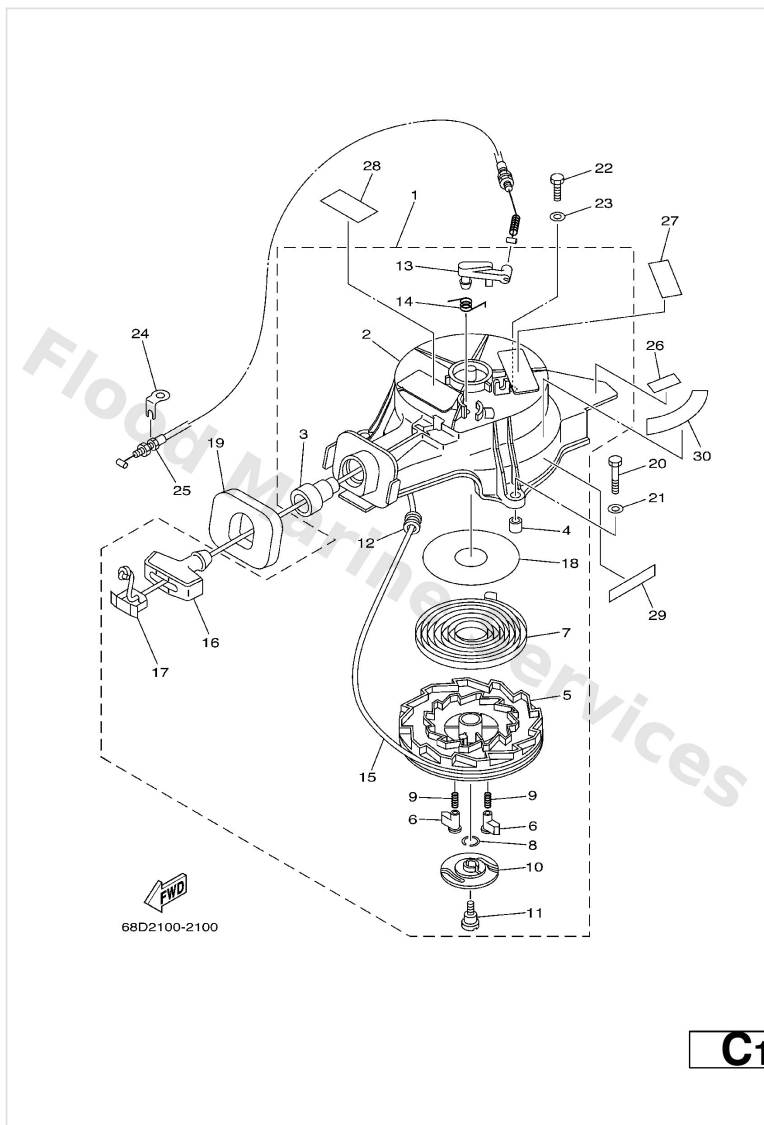
# Starter



**C1**

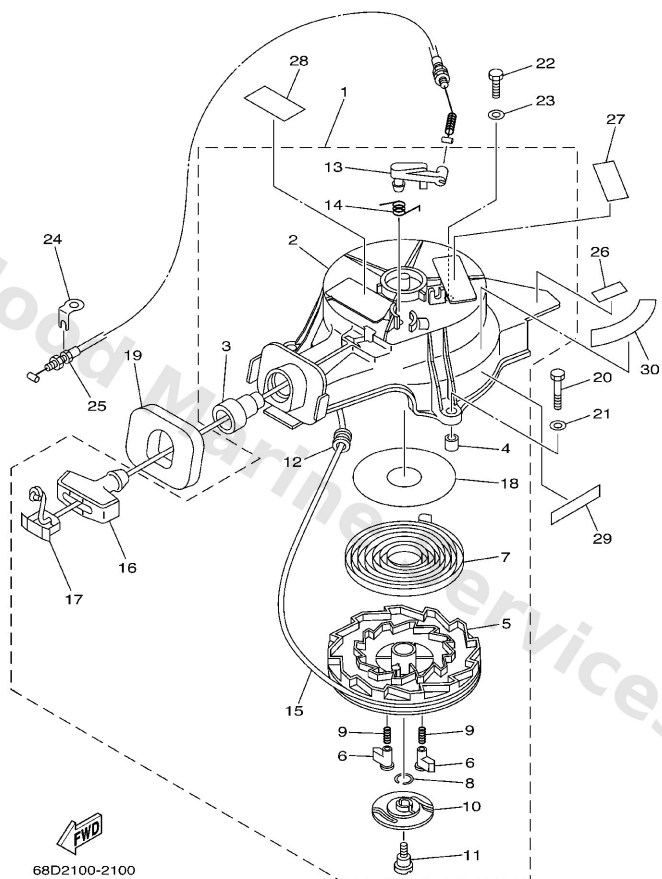
Ref	Part	
1	<a href="#">67D-15710-00</a> Starter assembly	<a href="#">Buy now</a>
2	<a href="#">67D-15711-00</a> Case, Starter	<a href="#">Buy now</a>
3	<a href="#">63V-15795-01</a> Guide, rope	<a href="#">Buy now</a>
4	<a href="#">67D-15764-00</a> Collar 1	<a href="#">Buy now</a>
5	<a href="#">67D-15714-00</a> Drum, sheave	<a href="#">Buy now</a>
6	<a href="#">67D-15741-00</a> Pawl, drive	<a href="#">Buy now</a>
7	<a href="#">67D-15713-00</a> Spring, starter	<a href="#">Buy now</a>
8	<a href="#">67D-15705-00</a> Spring, drive pawl	<a href="#">Buy now</a>
9	<a href="#">67D-15767-00</a> Spring	<a href="#">Buy now</a>
10	<a href="#">67D-15735-00</a> Guide, cam	<a href="#">Buy now</a>
11	<a href="#">67D-15793-00</a> Screw	<a href="#">Buy now</a>
12	<a href="#">63V-15764-00</a> Collar 1	<a href="#">Buy now</a>
13	<a href="#">67D-15794-00</a> Stopper	<a href="#">Buy now</a>
14	<a href="#">67D-15734-00</a> Spring, return	<a href="#">Buy now</a>
15	<a href="#">*</a> item_description	<a href="#">Buy now</a>

# Starter



Ref	Part	
16	<a href="#">6G1-15755-00</a> Handle, starter	<a href="#">Buy now</a>
17	<a href="#">6G1-15779-00</a> Cover	<a href="#">Buy now</a>
18	<a href="#">67D-15739-00</a> Washer, thrust	<a href="#">Buy now</a>
19	<a href="#">67D-15762-00</a> Seal Rubber 2	<a href="#">Buy now</a>
20	<a href="#">97095-06035</a> Bolt(j52)	<a href="#">Buy now</a>
21	<a href="#">92995-06600</a> Washer, plain (646)	<a href="#">Buy now</a>
22	<a href="#">97095-06020</a> Bolt(7u8)	<a href="#">Buy now</a>
24	<a href="#">67D-15772-00</a> Stay 2	<a href="#">Buy now</a>
25	<a href="#">67D-15770-00</a> Cable comp., starter stop	<a href="#">Buy now</a>
26	<a href="#">67D-42791-10</a> Mark 1	<a href="#">Buy now</a>
27	<a href="#">6A1-83625-41</a> Mark 5	<a href="#">Buy now</a>
28	<a href="#">6A1-83625-51</a> Mark 5 FOR CANADA,CARIB	<a href="#">Buy now</a>
29	<a href="#">68D-13437-40</a> Mark, Caution FOR USA,OCEANIA	<a href="#">Buy now</a>
29	<a href="#">68D-13437-50</a> Mark, caution FOR CANADA	<a href="#">Buy now</a>
29	<a href="#">68D-13437-60</a> Mark, Caution FOR CARIB	<a href="#">Buy now</a>

# Starter

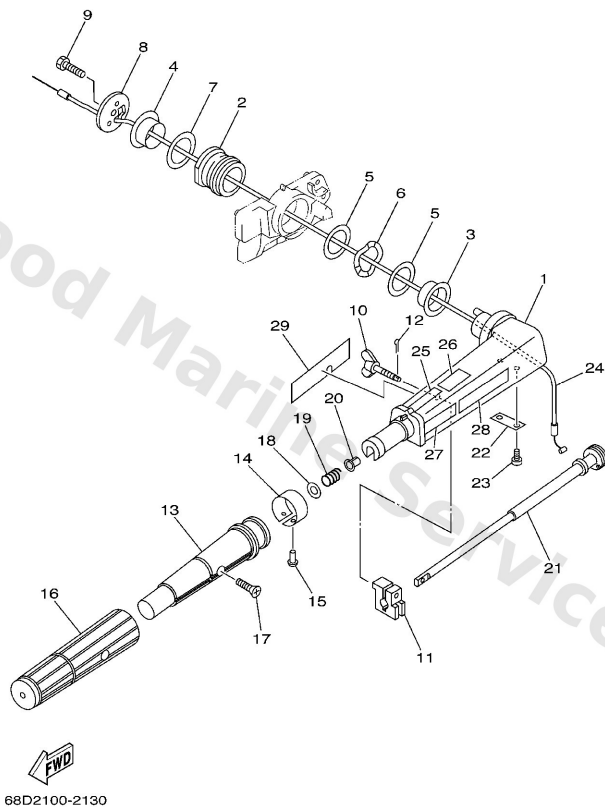


**C1**

Ref	Part	
30	<a href="#">67D-14427-40</a> Label, Instruction FOR USA,OCEANIA	<a href="#">Buy now</a>
30	<a href="#">67D-14427-50</a> Label, Instruction FOR CANADA	<a href="#">Buy now</a>
30	<a href="#">67D-14427-60</a> Label, Instruction FOR CARIB	<a href="#">Buy now</a>



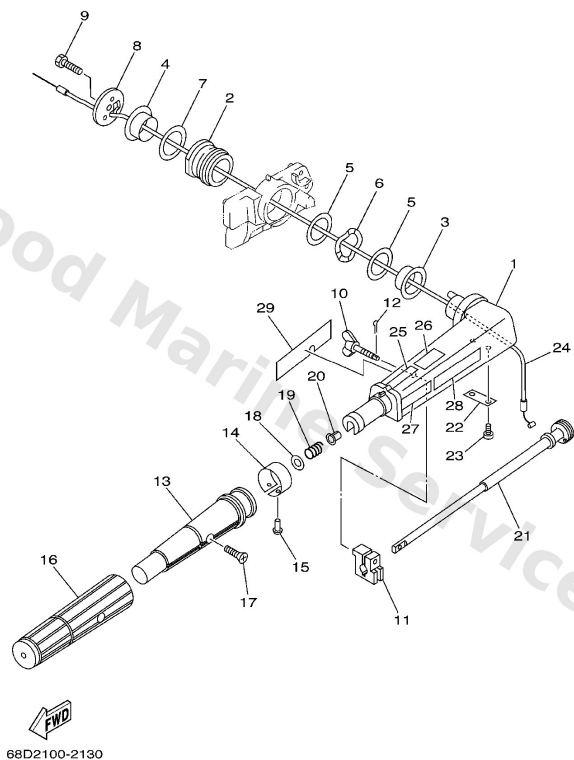
# Steering



**C5**

Ref	Part	
1	<a href="#">68D-G2111-00-4D</a> Handle, Steering	<a href="#">Buy now</a>
2	<a href="#">67D-42129-00</a> Bushing, rubber	<a href="#">Buy now</a>
3	<a href="#">68D-G2171-00</a> Bushing, 1	<a href="#">Buy now</a>
4	<a href="#">68D-G2172-00</a> Bushing, 2	<a href="#">Buy now</a>
5	<a href="#">68D-G2181-00</a> Washer, 1	<a href="#">Buy now</a>
6	<a href="#">69M-G2188-00</a> Washer,wave	<a href="#">Buy now</a>
7	<a href="#">68D-G2182-00</a> Washer, 2	<a href="#">Buy now</a>
8	<a href="#">68D-G2131-01</a> Cover, Handle Steering	<a href="#">Buy now</a>
9	<a href="#">97075-08025</a> Bolt, hexagon deep recess	<a href="#">Buy now</a>
10	<a href="#">6G1-42125-01</a> Bolt, friction adjusting	<a href="#">Buy now</a>
11	<a href="#">6N0-G2126-00</a> Piece, friction	<a href="#">Buy now</a>
12	<a href="#">91490-16010</a> Pin, cotter	<a href="#">Buy now</a>
13	<a href="#">68D-G2119-00</a> Grip, steering han	<a href="#">Buy now</a>
14	<a href="#">68D-G2137-00</a> Indicator Throttle	<a href="#">Buy now</a>
15	<a href="#">90269-02M09</a> Rivet(6I5)	<a href="#">Buy now</a>

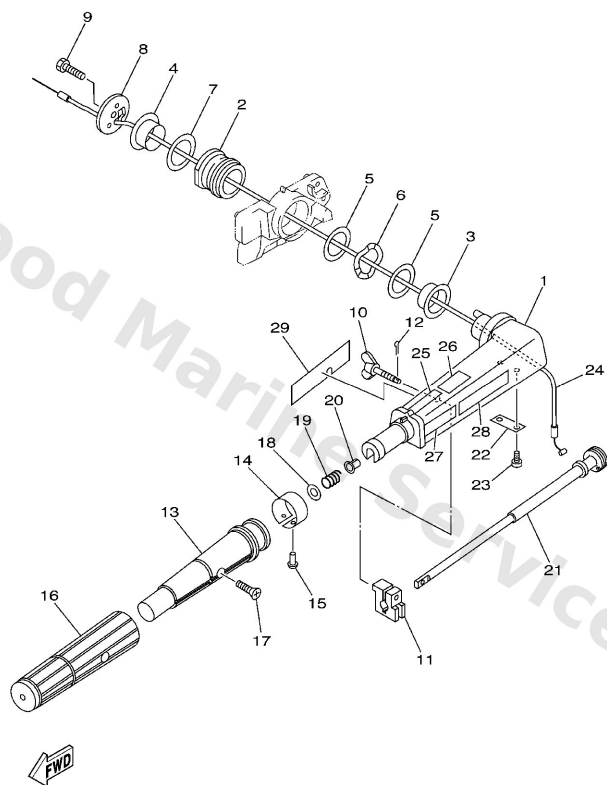
# Steering



**C5**

Ref	Part	
16	<a href="#">67D-42177-00</a> Rubber, handle	<a href="#">Buy now</a>
17	<a href="#">90149-05M13</a> Screw, countersunk	<a href="#">Buy now</a>
18	<a href="#">92903-10600</a> Washer, plate	<a href="#">Buy now</a>
19	<a href="#">90501-23215</a> Spring (655)	<a href="#">Buy now</a>
20	<a href="#">90386-08032</a> Bushing (650)	<a href="#">Buy now</a>
21	<a href="#">69M-G2138-00</a> Lever, throttle	<a href="#">Buy now</a>
22	<a href="#">68D-G2159-00</a> Stay	<a href="#">Buy now</a>
23	<a href="#">97885-05012</a> Screw,pan head (646)	<a href="#">Buy now</a>
24	<a href="#">68D-F6301-00</a> Trottle cable	<a href="#">Buy now</a>
25	<a href="#">6E0-83627-41</a> Label, caution 7	<a href="#">Buy now</a>
26	<a href="#">6E0-83627-51</a> Label, Caution 7 FOR CANADA,CARIB	<a href="#">Buy now</a>
27	<a href="#">6A1-2415A-41</a> Label, caution	<a href="#">Buy now</a>
28	<a href="#">6A1-2415A-51</a> Label Caution FOR CANADA,CARIB	<a href="#">Buy now</a>
29	<a href="#">68D-E571Y-40</a> 13 – FOR USA,OCEANIA	<a href="#">Buy now</a>
29	<a href="#">68D-E571Y-50</a> Mark Caution FOR CANADA	<a href="#">Buy now</a>

# Steering

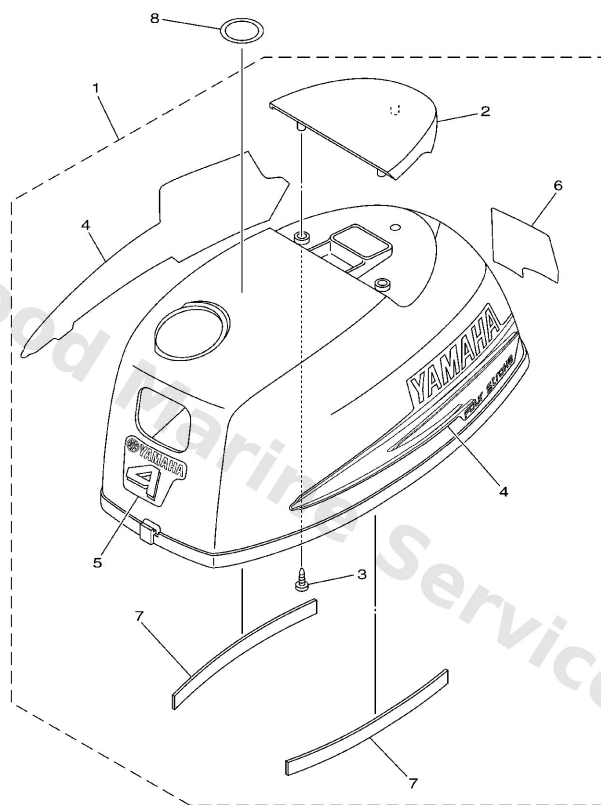


68D2100-2130

**C5**

Ref	Part	
29	<a href="#">68D-E571Y-60</a> 13 – FOR CARIB	<a href="#">Buy now</a>

## Top Cowling

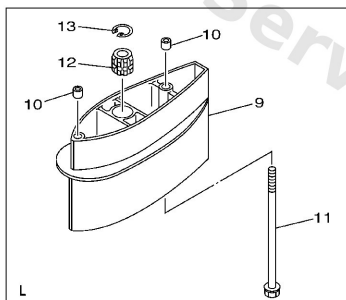
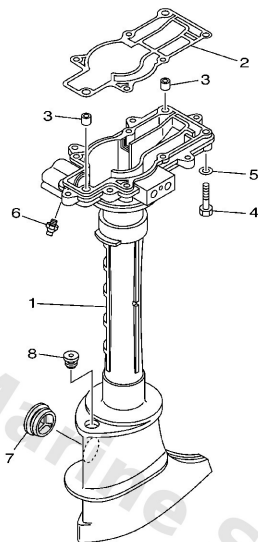


68D2010-2010

A4

Ref	Part	
2	<a href="#">68D-G2613-01</a> Molding,air duct	<a href="#">Buy now</a>
3	<a href="#">97780-40012</a> Screw, trushead tapping (ge31)	<a href="#">Buy now</a>
4	<a href="#">68D-WG070-00</a> Graphic set	<a href="#">Buy now</a>
5	<a href="#">68D-G2677-00</a> Graphic, Front	<a href="#">Buy now</a>
6	<a href="#">68D-G2678-00</a> Graphic Rear	<a href="#">Buy now</a>
7	<a href="#">68D-42662-00</a> Damper	<a href="#">Buy now</a>
8	<a href="#">67F-13434-02</a> Label, Caution	<a href="#">Buy now</a>

## Upper Casing

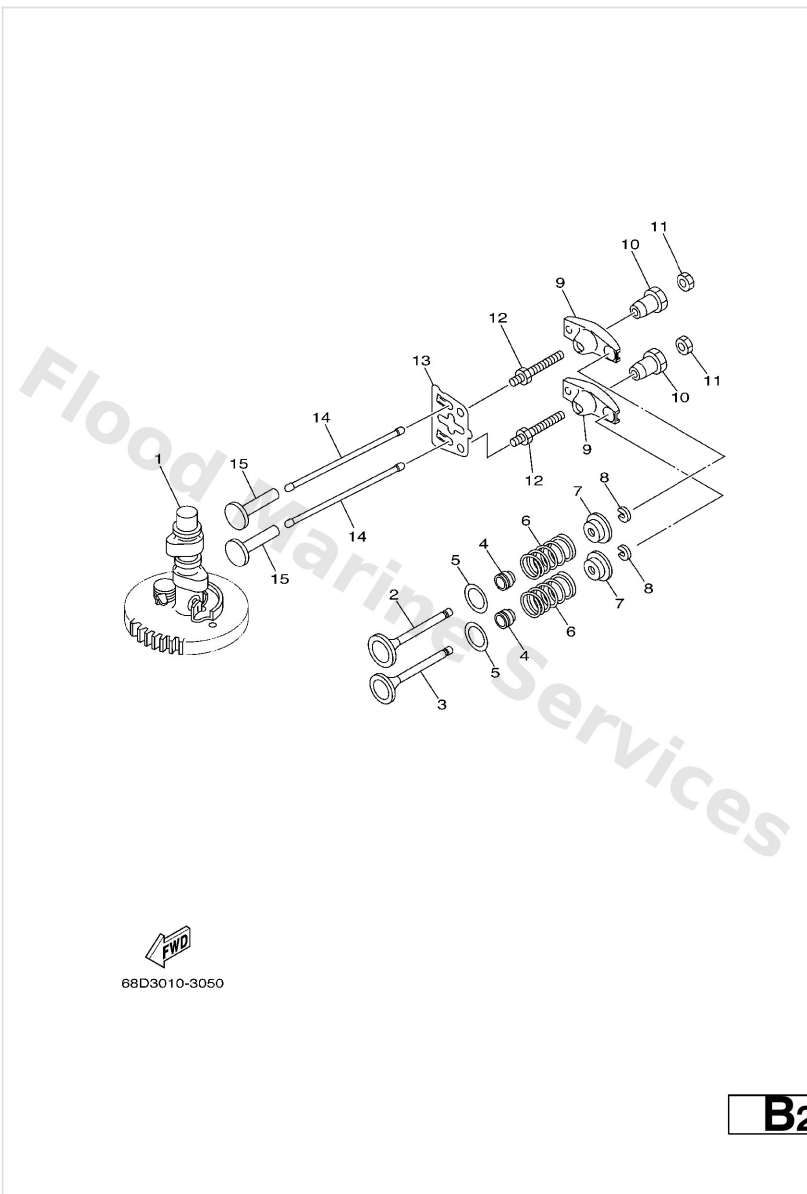


  
68D2010-2160

**D3**

Ref	Part	
1	<a href="#">68D-G5111-01-4D</a> Casing, Upper	<a href="#">Buy now</a>
2	<a href="#">68D-G5113-A0</a> Gasket, upper casing	<a href="#">Buy now</a>
10	<a href="#">90387-06806</a> Collar(6e0) L	<a href="#">Buy now</a>
4	<a href="#">97095-06035</a> Bolt(j52)	<a href="#">Buy now</a>
5	<a href="#">92995-06600</a> Washer, plain (646)	<a href="#">Buy now</a>
6	<a href="#">93700-06M03</a> Nipple, grease(6a1)	<a href="#">Buy now</a>
7	<a href="#">647-45151-01</a> Cover, upper casing	<a href="#">Buy now</a>
8	<a href="#">90480-10M13</a> Grommet (6e0)	<a href="#">Buy now</a>
11	<a href="#">90119-06M77</a> Bolt, with washer L	<a href="#">Buy now</a>
12	<a href="#">6E0-45318-01</a> Bushing, drive shaft 3 L	<a href="#">Buy now</a>
13	<a href="#">93420-22M03</a> Cir clip (6e0) L	<a href="#">Buy now</a>

# Valve



Ref	Part	
1	<a href="#">68D-E2170-00</a> Cam shaft assembly	<a href="#">Buy now</a>
2	<a href="#">67D-12111-00</a> Valve, intake	<a href="#">Buy now</a>
3	<a href="#">67D-12121-00</a> Valve, exhaust	<a href="#">Buy now</a>
4	<a href="#">51Y-12119-00</a> Seal, valve stem	<a href="#">Buy now</a>
5	<a href="#">68T-12116-00</a> Seat, valve spring	<a href="#">Buy now</a>
6	<a href="#">68D-E2113-00</a> Spring, valve inne	<a href="#">Buy now</a>
7	<a href="#">7NJ-12117-00</a> Retainer, valve spring	<a href="#">Buy now</a>
8	<a href="#">7NJ-12118-00</a> Cotter, valve	<a href="#">Buy now</a>
9	<a href="#">67D-12151-00</a> Arm, valve rocker	<a href="#">Buy now</a>
10	<a href="#">7FK-12165-00</a> Pivot, rocker arm	<a href="#">Buy now</a>
11	<a href="#">7FK-12158-00</a> Nut, lock	<a href="#">Buy now</a>
12	<a href="#">67D-12157-00</a> Bolt	<a href="#">Buy now</a>
13	<a href="#">68D-E2155-00</a> Guide, Push Rod	<a href="#">Buy now</a>
14	<a href="#">67D-12154-00</a> Rod, valve push	<a href="#">Buy now</a>
15	<a href="#">JA9-12153-00</a> Lifter, valve	<a href="#">Buy now</a>

# Disclaimer

This document is provided for convenience only. It is **not** an official Yamaha publication and is **not supplied, endorsed, or approved** by Yamaha Motor Co., Ltd.

Reasonable efforts are made to keep information accurate; however diagrams, part references, supersessions, descriptions, and applicability may contain errors or omissions. Specifications and part availability may change without notice.

You are responsible for confirming the correct parts for your engine (including model code, year, serial range, and any superseded part numbers) before ordering or fitting.