



# Yamaha F9.9HMH 2009

## Parts Manual

[www.floodmarine.co.uk](http://www.floodmarine.co.uk)

+44 2882 246 539

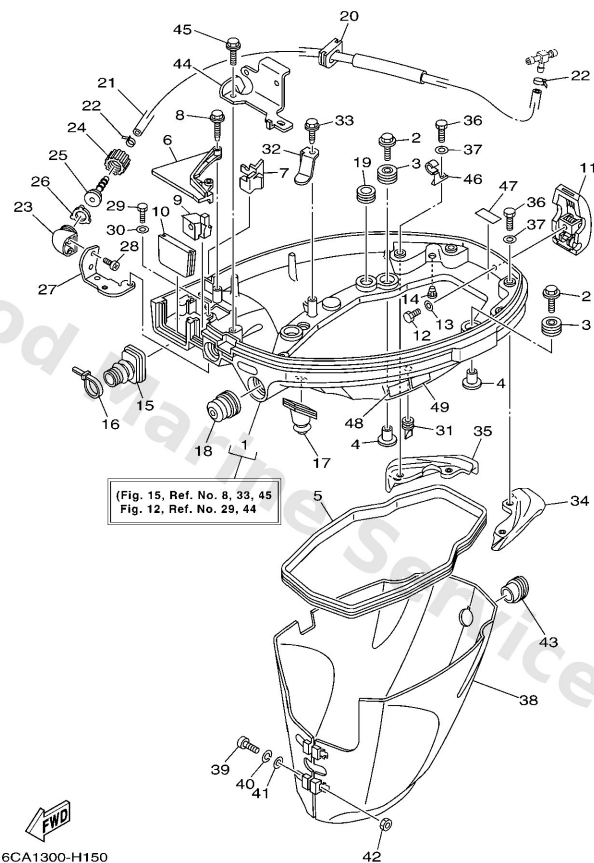
Authorised Yamaha Dealers



# Contents

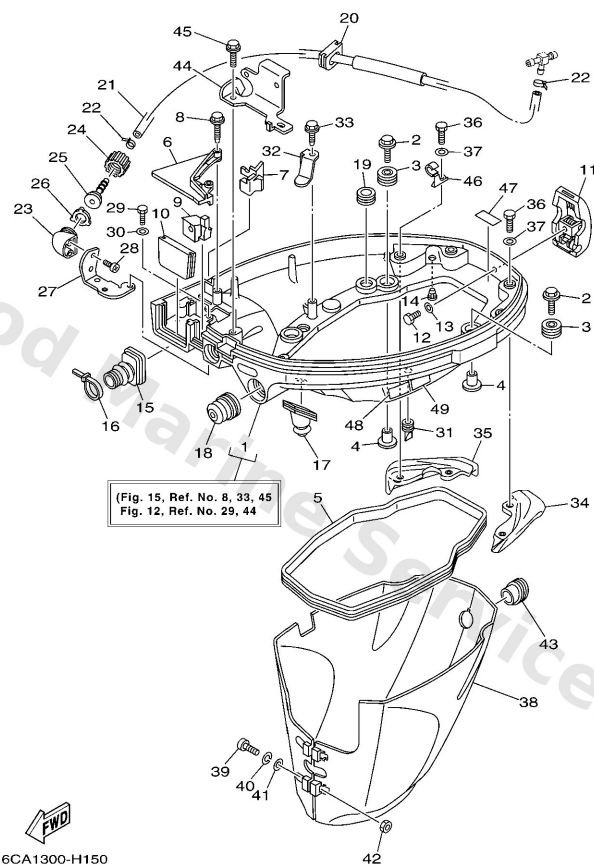
|                                   |    |
|-----------------------------------|----|
| <b>BOTTOM COWLING</b>             | 3  |
| <b>BRACKET 1</b>                  | 6  |
| <b>BRACKET 2</b>                  | 9  |
| <b>CARBURETOR</b>                 | 11 |
| <b>CONTROL</b>                    | 14 |
| <b>CRANKSHAFT &amp; PISTON</b>    | 17 |
| <b>CYLINDER &amp; CRANKCASE 1</b> | 19 |
| <b>CYLINDER &amp; CRANKCASE 2</b> | 21 |
| <b>ELECTRICAL 1</b>               | 23 |
| <b>ELECTRICAL 2</b>               | 26 |
| <b>ELECTRICAL 3</b>               | 28 |
| <b>FUEL</b>                       | 29 |
| <b>FUEL TANK</b>                  | 33 |
| <b>GENERATOR</b>                  | 34 |
| <b>INTAKE</b>                     | 35 |
| <b>LOWER CASING &amp; DRIVE 1</b> | 37 |
| <b>LOWER CASING &amp; DRIVE 2</b> | 42 |
| <b>OIL PAN</b>                    | 44 |
| <b>OIL PUMP</b>                   | 46 |
| <b>REPAIR KIT 1</b>               | 48 |
| <b>REPAIR KIT 2</b>               | 50 |
| <b>REPAIR KIT 3</b>               | 51 |
| <b>STARTER</b>                    | 53 |
| <b>STEERING</b>                   | 56 |
| <b>STEERING FRICTION</b>          | 59 |
| <b>TOP COWLING</b>                | 61 |
| <b>UPPER CASING</b>               | 63 |
| <b>VALVE</b>                      | 65 |

## Bottom Cowling



| Ref | Part  |                         |
|-----|---|-------------------------|
| 1   | <a href="#">6AH42710004D</a><br>Bottom cowling assembly | <a href="#">Buy now</a> |
| 2   | <a href="#">68F8511900</a><br>Bolt                      | <a href="#">Buy now</a> |
| 3   | <a href="#">9048021M82</a><br>Grommet                   | <a href="#">Buy now</a> |
| 4   | <a href="#">9038706176</a><br>Collar                    | <a href="#">Buy now</a> |
| 5   | <a href="#">6AH4271600</a><br>Rubber, seal 1            | <a href="#">Buy now</a> |
| 6   | <a href="#">6AH42738004D</a><br>Plate, fitting          | <a href="#">Buy now</a> |
| 7   | <a href="#">6AH4271800</a><br>Rubber, seal 3            | <a href="#">Buy now</a> |
| 8   | <a href="#">9010906M82</a><br>Bolt                      | <a href="#">Buy now</a> |
| 9   | <a href="#">6AH4272500</a><br>Grommet                   | <a href="#">Buy now</a> |
| 10  | <a href="#">6AH4272400</a><br>Grommet                   | <a href="#">Buy now</a> |
| 11  | <a href="#">6AH4280100</a><br>Cowling clamp comp.       | <a href="#">Buy now</a> |
| 12  | <a href="#">9709506012</a><br>Bolt(gh1)                 | <a href="#">Buy now</a> |
| 13  | <a href="#">9299506600</a><br>Washer, plain (646)       | <a href="#">Buy now</a> |
| 14  | <a href="#">6H34439101</a><br>Nipple, hose              | <a href="#">Buy now</a> |
| 15  | <a href="#">6AH2632600</a><br>Grommet                   | <a href="#">Buy now</a> |

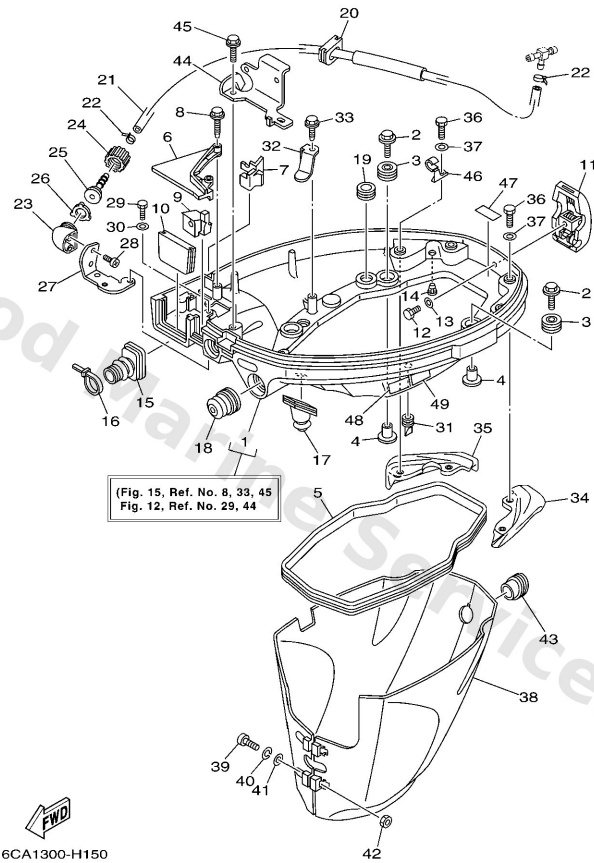
## Bottom Cowling



| Ref | Part   |                         |
|-----|--|-------------------------|
| 16  | <a href="#">9046511M10</a><br>Clamp              | <a href="#">Buy now</a> |
| 17  | <a href="#">6AH4272700</a><br>Grommet            | <a href="#">Buy now</a> |
| 18  | <a href="#">65W4272600</a><br>Grommet            | <a href="#">Buy now</a> |
| 19  | <a href="#">9048016007</a><br>Grommet            | <a href="#">Buy now</a> |
| 20  | <a href="#">6AH4272600</a><br>Grommet            | <a href="#">Buy now</a> |
| 21  | <a href="#">6AH2431401</a><br>Pipe 4             | <a href="#">Buy now</a> |
| 23  | <a href="#">68T1257200</a><br>Adapter            | <a href="#">Buy now</a> |
| 24  | <a href="#">6R31258100</a><br>Joint, hose 1      | <a href="#">Buy now</a> |
| 25  | <a href="#">6R31258200</a><br>Joint, hose 2      | <a href="#">Buy now</a> |
| 26  | <a href="#">6R31258300</a><br>Gasket, hose joint | <a href="#">Buy now</a> |
| 27  | <a href="#">6AH1253500</a><br>Plate              | <a href="#">Buy now</a> |
| 28  | <a href="#">9016706002</a><br>Screw, tapping     | <a href="#">Buy now</a> |
| 29  | <a href="#">9709506010</a><br>Bolt               | <a href="#">Buy now</a> |
| 31  | <a href="#">65W4271700</a><br>Rubber, seal 2     | <a href="#">Buy now</a> |
| 32  | <a href="#">6AH4274300</a><br>Bracket            | <a href="#">Buy now</a> |

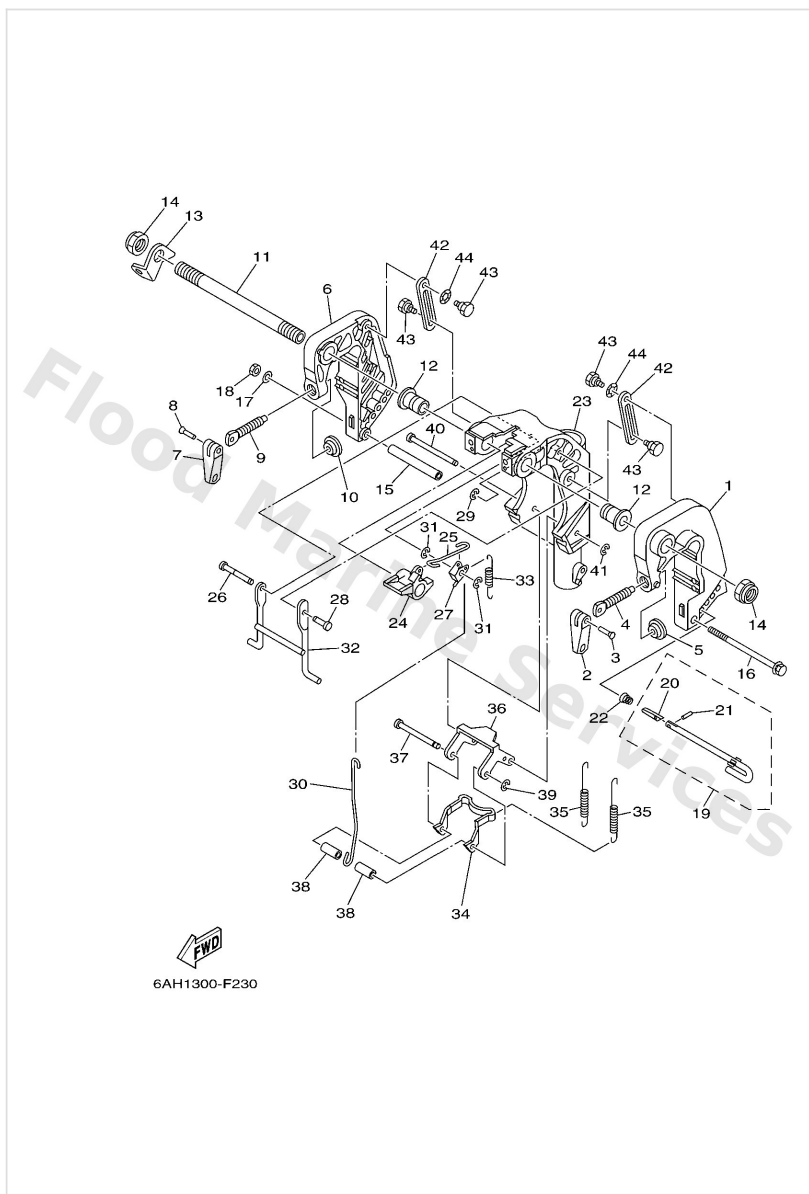


## Bottom Cowling



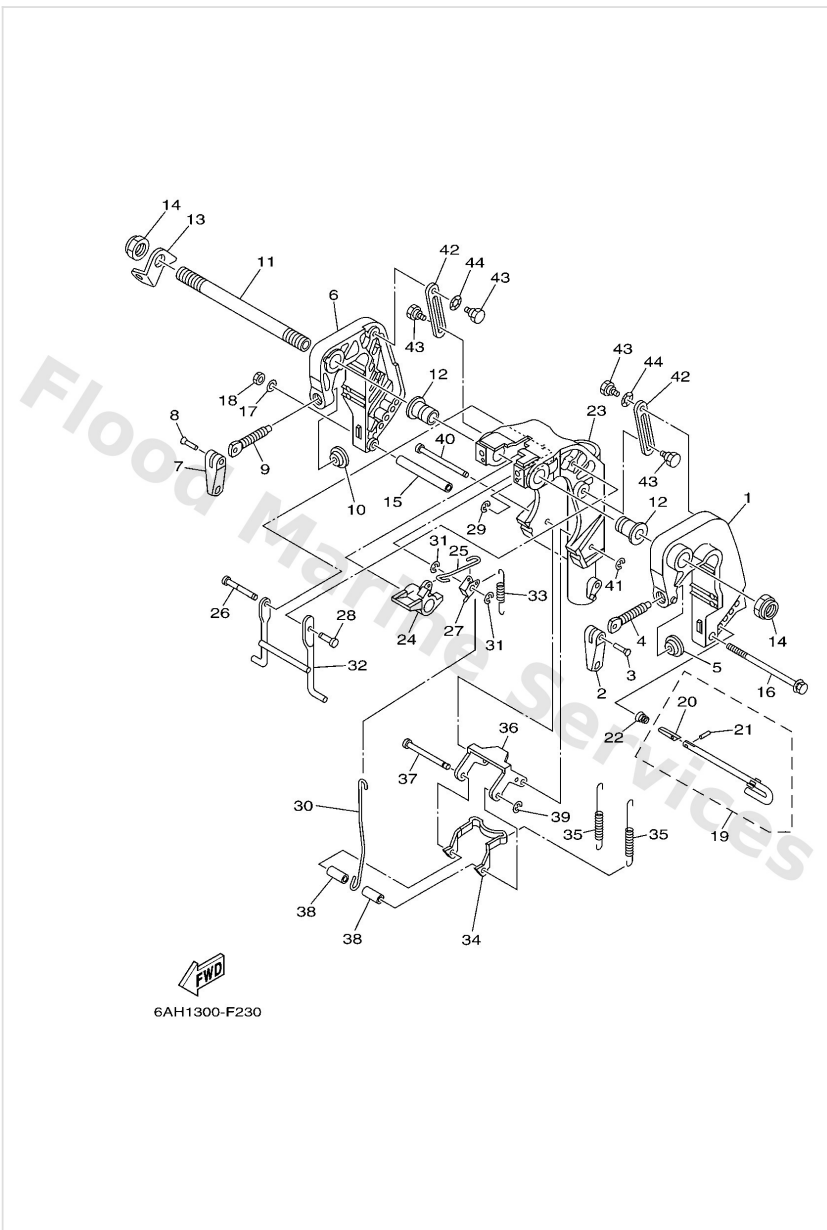
| Ref | Part   |                         |
|-----|--|-------------------------|
| 33  | <a href="#">9010906M86</a><br>Bolt                 | <a href="#">Buy now</a> |
| 34  | <a href="#">6AH4276100</a><br>Stopper              | <a href="#">Buy now</a> |
| 35  | <a href="#">6AH4276200</a><br>Stopper              | <a href="#">Buy now</a> |
| 36  | <a href="#">9707506012</a><br>Bolt(gh1)            | <a href="#">Buy now</a> |
| 38  | <a href="#">6AH4274100</a><br>Apron                | <a href="#">Buy now</a> |
| 39  | <a href="#">9788506030</a><br>Screw, pan head(6e0) | <a href="#">Buy now</a> |
| 40  | <a href="#">9299506100</a><br>Washer(6a1)          | <a href="#">Buy now</a> |
| 42  | <a href="#">9538006600</a><br>Nut(661)             | <a href="#">Buy now</a> |
| 43  | <a href="#">6AH4271700</a><br>Rubber, seal 2       | <a href="#">Buy now</a> |
| 44  | <a href="#">6AH1577400</a><br>Stay 4               | <a href="#">Buy now</a> |
| 46  | <a href="#">9046508M82</a><br>Clamp                | <a href="#">Buy now</a> |
| 47  | <a href="#">6C58237700</a><br>□□□                  | <a href="#">Buy now</a> |
| 48  | <a href="#">6AH4279440</a><br>Label, warning (ge   | <a href="#">Buy now</a> |
| 49  | <a href="#">6AH4279450</a><br>Label, warning (ge   | <a href="#">Buy now</a> |

# Bracket 1



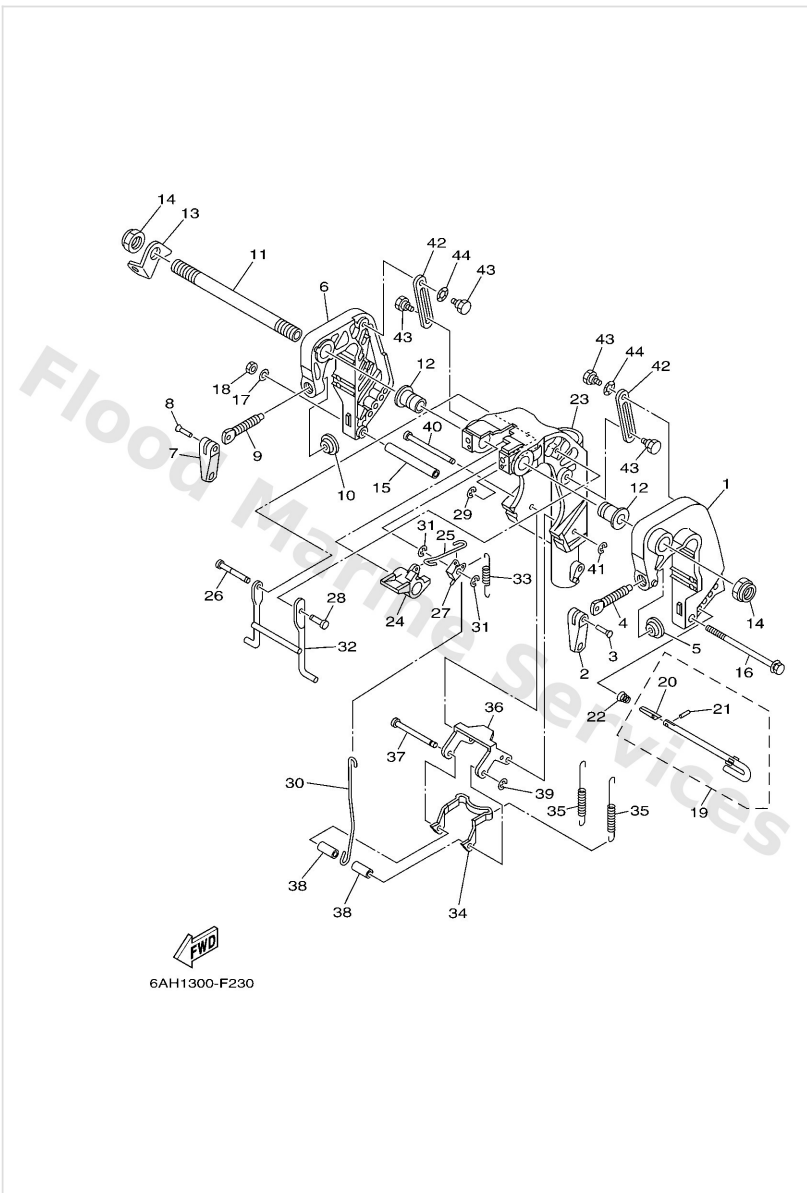
| Ref | Part   |                         |
|-----|--|-------------------------|
| 1   | <a href="#">6AH43111004D</a><br>Bracket, clamp 1                           | <a href="#">Buy now</a> |
| 2   | <a href="#">6E04311801</a><br>Handle, transom clamp                        | <a href="#">Buy now</a> |
| 3   | <a href="#">9024304M01</a><br>Pin(6a1)                                     | <a href="#">Buy now</a> |
| 4   | <a href="#">6E74311600</a><br>Screw, transom clamp                         | <a href="#">Buy now</a> |
| 5   | <a href="#">6484311401</a><br>Pad, transom clamp                           | <a href="#">Buy now</a> |
| 6   | <a href="#">6AH43112004D</a><br>Bracket, clamp 2                           | <a href="#">Buy now</a> |
| 11  | <a href="#">69A4313100</a><br>Bolt, clamp bracket<br><b>FOR RIDE GUIDE</b> | <a href="#">Buy now</a> |
| 12  | <a href="#">9038622MA4</a><br>Bush   | <a href="#">Buy now</a> |
| 13  | <a href="#">66R4311300</a><br>Plate, clamp bracket                         | <a href="#">Buy now</a> |
| 14  | <a href="#">9018522043</a><br>Nut, self-locking                            | <a href="#">Buy now</a> |
| 15  | <a href="#">9038706M13</a><br>Collar(6h6)                                  | <a href="#">Buy now</a> |
| 16  | <a href="#">9010106M18</a><br>Bolt(6I5)                                    | <a href="#">Buy now</a> |
| 17  | <a href="#">9299006600</a><br>Washer, plain (646)                          | <a href="#">Buy now</a> |
| 18  | <a href="#">9538006700</a><br>Nut  | <a href="#">Buy now</a> |
| 19  | <a href="#">6L24316001</a><br>Tilt rod assembly                            | <a href="#">Buy now</a> |

# Bracket 1



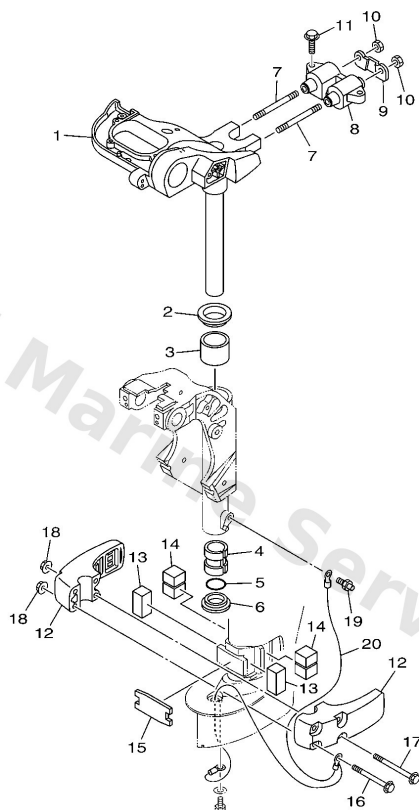
| Ref | Part  |                         |
|-----|---|-------------------------|
| 20  | <a href="#">6894316500</a><br>Plate, tilt lock                | <a href="#">Buy now</a> |
| 21  | <a href="#">9169030008</a><br>Pin. spring(656)                | <a href="#">Buy now</a> |
| 22  | <a href="#">9050210M07</a><br>Spring, conical(6k3)            | <a href="#">Buy now</a> |
| 23  | <a href="#">6AH43311004D</a><br>Bracket, swivel 1<br>S(17.1") | <a href="#">Buy now</a> |
| 23  | <a href="#">6AH43311104D</a><br>Bracket, swivel 1<br>L(22.1") | <a href="#">Buy now</a> |
| 24  | <a href="#">6AH4363100</a><br>Lever, tilt                     | <a href="#">Buy now</a> |
| 25  | <a href="#">6AH4361600</a><br>Rod, tilt lock                  | <a href="#">Buy now</a> |
| 26  | <a href="#">6AH4364600</a><br>Shaft, lever                    | <a href="#">Buy now</a> |
| 27  | <a href="#">6AH4364100</a><br>Lever, tilt                     | <a href="#">Buy now</a> |
| 28  | <a href="#">6AH4319100</a><br>Shaft, stopper                  | <a href="#">Buy now</a> |
| 29  | <a href="#">9908005600</a><br>Circlip(22k)                    | <a href="#">Buy now</a> |
| 30  | <a href="#">6AH4361700</a><br>Rod, tilt lock                  | <a href="#">Buy now</a> |
| 32  | <a href="#">6AH4335000</a><br>Receiver assembly               | <a href="#">Buy now</a> |
| 33  | <a href="#">9050618014</a><br>Spring, tension                 | <a href="#">Buy now</a> |
| 34  | <a href="#">6AH4361400</a><br>Plate, tilt lock                | <a href="#">Buy now</a> |

# Bracket 1



| Ref | Part  |                         |
|-----|---|-------------------------|
| 35  | <a href="#">9050620020</a><br>Spring, tension     | <a href="#">Buy now</a> |
| 36  | <a href="#">6AH4361500</a><br>Plate, tilt lock    | <a href="#">Buy now</a> |
| 37  | <a href="#">68T4361100</a><br>Shaft, tilt lock    | <a href="#">Buy now</a> |
| 38  | <a href="#">9038706138</a><br>Collar              | <a href="#">Buy now</a> |
| 39  | <a href="#">9343004M03</a><br>Circlip (eu0)       | <a href="#">Buy now</a> |
| 40  | <a href="#">68T4365900</a><br>Shaft, reverse lock | <a href="#">Buy now</a> |
| 42  | <a href="#">6AH4362700</a><br>Stopper             | <a href="#">Buy now</a> |
| 43  | <a href="#">9010906M84</a><br>Bolt                | <a href="#">Buy now</a> |
| 44  | <a href="#">9020610M24</a><br>Washer, wave        | <a href="#">Buy now</a> |

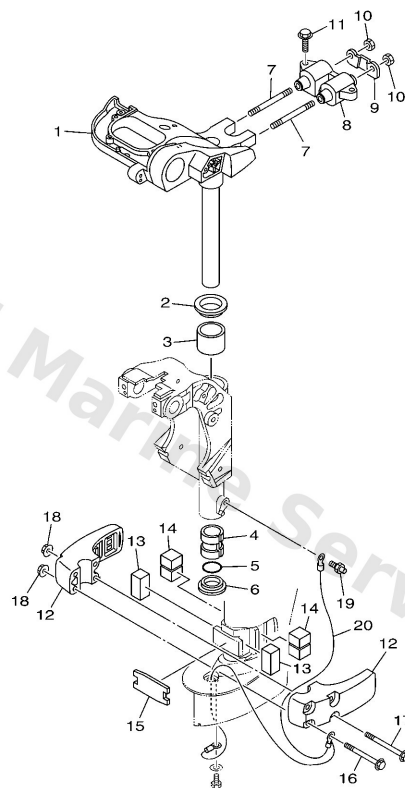
## Bracket 2



6CA1300-H200

| Ref | Part  |                         |
|-----|---|-------------------------|
| 1   | <a href="#">6AH42510004D</a><br>Steering bracket assembly<br>S(17.1") | <a href="#">Buy now</a> |
| 1   | <a href="#">6AH42510104D</a><br>Steering bracket assembly<br>L(22.1") | <a href="#">Buy now</a> |
| 2   | <a href="#">9020940008</a><br>Washer                                  | <a href="#">Buy now</a> |
| 3   | <a href="#">9038640001</a><br>Bush                                    | <a href="#">Buy now</a> |
| 4   | <a href="#">9038630048</a><br>Bush                                    | <a href="#">Buy now</a> |
| 5   | <a href="#">9321029M94</a><br>O-ring(6h1)                             | <a href="#">Buy now</a> |
| 6   | <a href="#">9038630M60</a><br>Bush(6j8)                               | <a href="#">Buy now</a> |
| 7   | <a href="#">9011610033</a><br>Bolt, stud                              | <a href="#">Buy now</a> |
| 8   | <a href="#">6AH445140094</a><br>Mount damper, upper side              | <a href="#">Buy now</a> |
| 9   | <a href="#">6AH4452600</a><br>Plate                                   | <a href="#">Buy now</a> |
| 10  | <a href="#">9538010600</a><br>Nut(624)                                | <a href="#">Buy now</a> |
| 11  | <a href="#">9011908094</a><br>Bolt, with washer                       | <a href="#">Buy now</a> |
| 12  | <a href="#">6AH44551004D</a><br>Housing, lower mount rubber 1         | <a href="#">Buy now</a> |
| 13  | <a href="#">6AH4455700</a><br>Mount damper, lower front               | <a href="#">Buy now</a> |
| 14  | <a href="#">6AH4455500</a><br>Mount damper, lower side                | <a href="#">Buy now</a> |

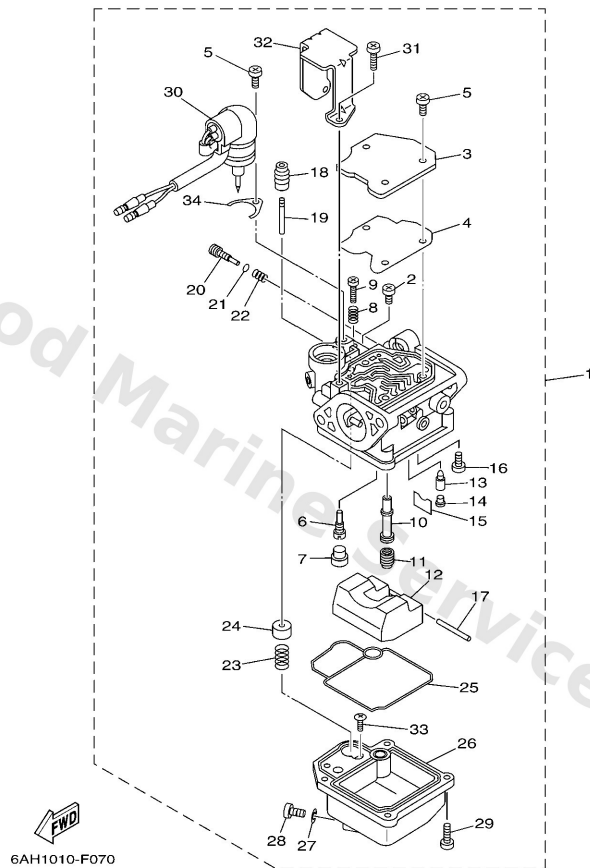
## Bracket 2



6CA1300-H200

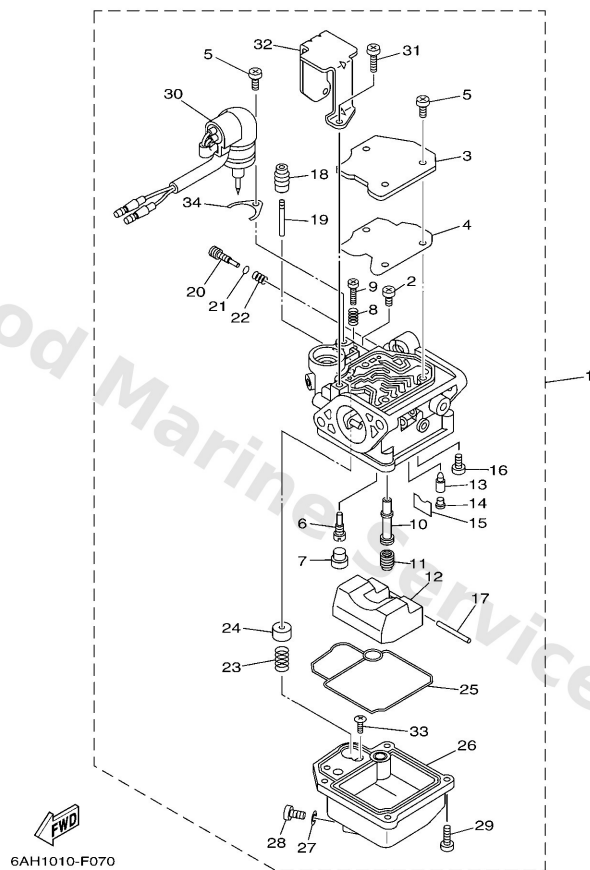
| Ref | Part  |                         |
|-----|---|-------------------------|
| 15  | <a href="#">6AH4457400</a><br>Stopper, lower mount rubber | <a href="#">Buy now</a> |
| 16  | <a href="#">9011908M45</a><br>Bolt, with washer           | <a href="#">Buy now</a> |
| 17  | <a href="#">9011908M46</a><br>Bolt, with washer           | <a href="#">Buy now</a> |
| 18  | <a href="#">9017908M34</a><br>Nut                         | <a href="#">Buy now</a> |
| 19  | <a href="#">9370006M03</a><br>Nipple, grease(6a1)         | <a href="#">Buy now</a> |
| 20  | <a href="#">6AH8212700</a><br>Wire, lead 2                | <a href="#">Buy now</a> |

# Carburetor



| Ref | Part   |                         |
|-----|--|-------------------------|
| 1   | <a href="#">6AG1430110</a><br>Carburetor assembly 1  | <a href="#">Buy now</a> |
| 2   | <a href="#">9858004006</a><br>Screw, pan head (7h3)  | <a href="#">Buy now</a> |
| 3   | <a href="#">65W1457200</a><br>Plate                  | <a href="#">Buy now</a> |
| 4   | <a href="#">65W1412610</a><br>Gasket                 | <a href="#">Buy now</a> |
| 5   | <a href="#">9798004110</a><br>Screw, pan head (e56)  | <a href="#">Buy now</a> |
| 6   | <a href="#">6AG1494802</a><br>Jet (#38)              | <a href="#">Buy now</a> |
| 7   | <a href="#">6791496600</a><br>Rubber cap             | <a href="#">Buy now</a> |
| 8   | <a href="#">9050110326</a><br>Spring coil(663)(carb) | <a href="#">Buy now</a> |
| 9   | <a href="#">63V1452300</a><br>Screw, stop            | <a href="#">Buy now</a> |
| 10  | <a href="#">6AH1494710</a><br>Jet, needle            | <a href="#">Buy now</a> |
| 11  | <a href="#">6761494319</a><br>Jet, main (#80)        | <a href="#">Buy now</a> |
| 12  | <a href="#">6AH1498500</a><br>Float                  | <a href="#">Buy now</a> |
| 13  | <a href="#">6G11454601</a><br>Valve, needle          | <a href="#">Buy now</a> |
| 14  | <a href="#">6761418600</a><br>Pin, valve             | <a href="#">Buy now</a> |
| 15  | <a href="#">6631415900</a><br>Clip                   | <a href="#">Buy now</a> |

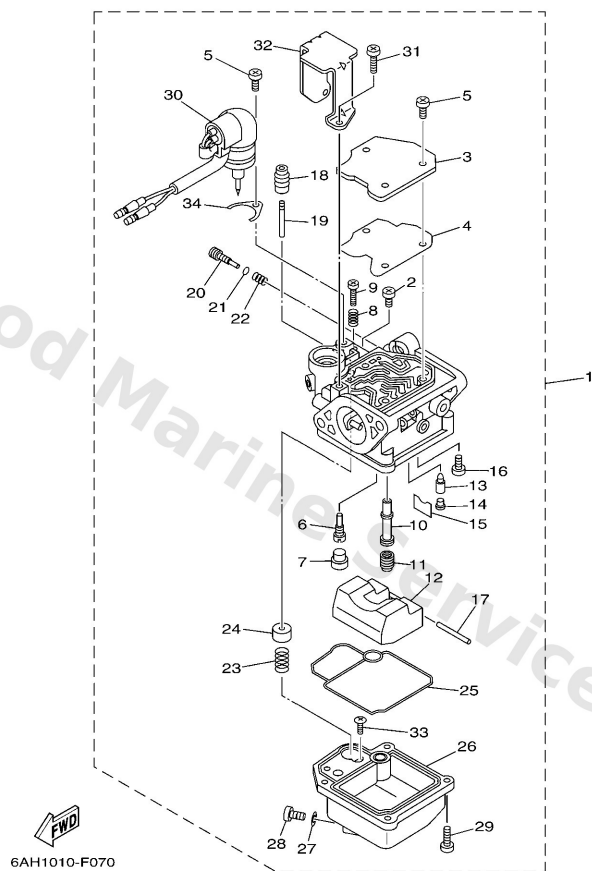
# Carburetor



| Ref | Part   |                         |
|-----|--|-------------------------|
| 16  | <a href="#">9858004008</a><br>Screw, pan head (713)  | <a href="#">Buy now</a> |
| 17  | <a href="#">6H41454800</a><br>Pin, float arm         | <a href="#">Buy now</a> |
| 18  | <a href="#">65W1437301</a><br>Cover, plunger cap     | <a href="#">Buy now</a> |
| 19  | <a href="#">6AH1437900</a><br>Rod, starter           | <a href="#">Buy now</a> |
| 20  | <a href="#">67C1492320</a><br>Screw, pilot           | <a href="#">Buy now</a> |
| 21  | <a href="#">67C1439700</a><br>O-ring                 | <a href="#">Buy now</a> |
| 22  | <a href="#">67C1455500</a><br>Spring                 | <a href="#">Buy now</a> |
| 23  | <a href="#">65W1433500</a><br>Spring, plunger        | <a href="#">Buy now</a> |
| 24  | <a href="#">6AH1437100</a><br>Plunger, starter       | <a href="#">Buy now</a> |
| 25  | <a href="#">6AH1438400</a><br>Gasket, float chamber  | <a href="#">Buy now</a> |
| 26  | <a href="#">6AH1498000</a><br>Body, float chamber    | <a href="#">Buy now</a> |
| 27  | <a href="#">65W1439800</a><br>Washer                 | <a href="#">Buy now</a> |
| 28  | <a href="#">65W1499200</a><br>Screw, drain           | <a href="#">Buy now</a> |
| 29  | <a href="#">9798004114</a><br>Screw, pan head(ga5)   | <a href="#">Buy now</a> |
| 30  | <a href="#">6AH1438000</a><br>Prime starter assembly | <a href="#">Buy now</a> |

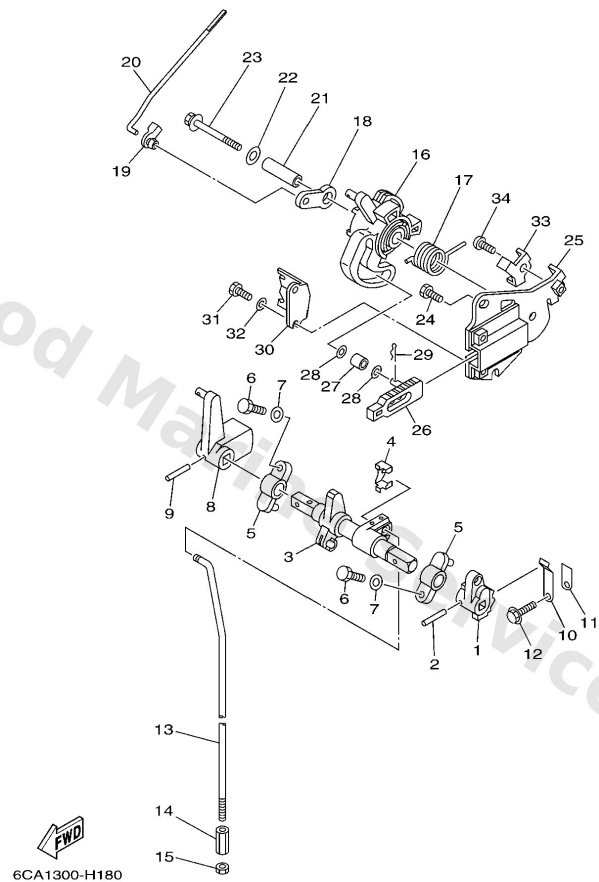


# Carburetor



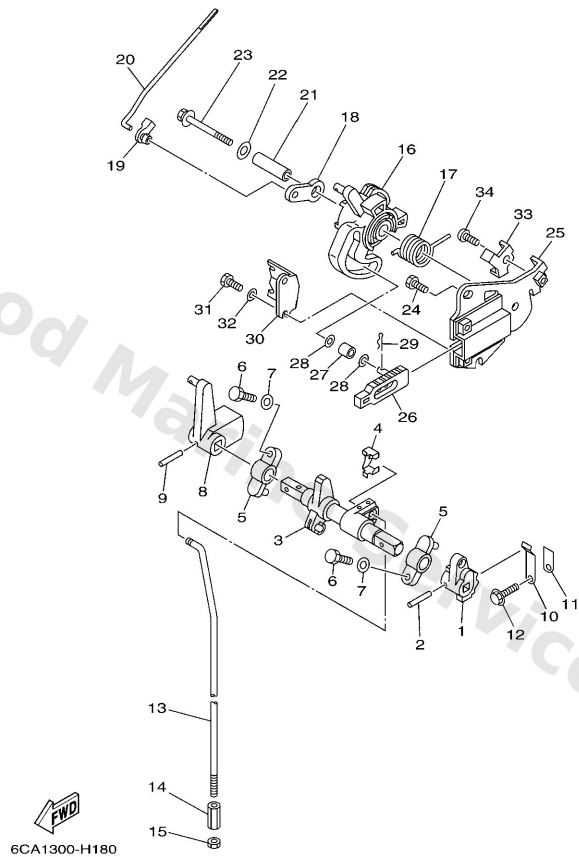
| Ref | Part  |                         |
|-----|---|-------------------------|
| 31  | <a href="#">9798004108</a><br>Screw, with washer(6m6) | <a href="#">Buy now</a> |
| 32  | <a href="#">6AH1434600</a><br>Plate                   | <a href="#">Buy now</a> |
| 33  | <a href="#">67C1456700</a><br>Screw                   | <a href="#">Buy now</a> |
| 34  | <a href="#">65W1434600</a><br>Plate                   | <a href="#">Buy now</a> |

# Control



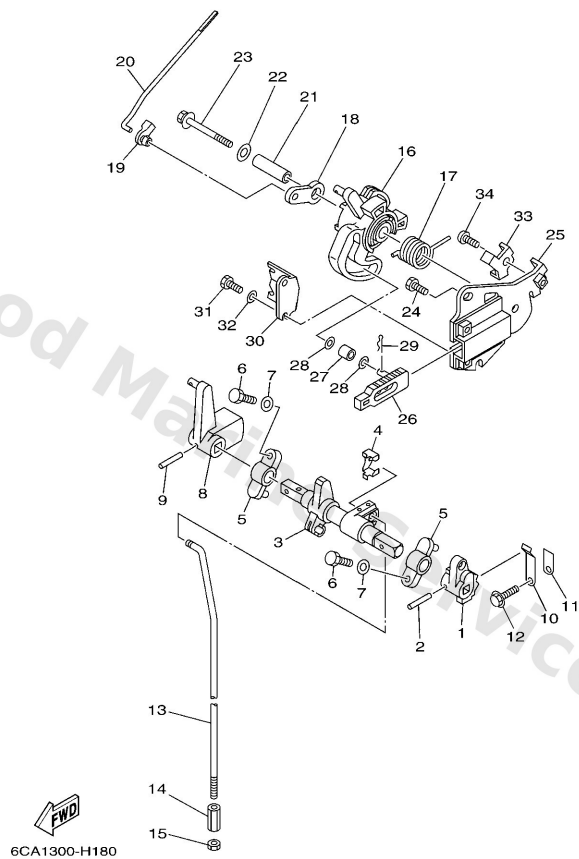
| Ref | Part   |                         |
|-----|--|-------------------------|
| 1   | <a href="#">6AH4412300</a><br>Arm, shift rod           | <a href="#">Buy now</a> |
| 2   | <a href="#">9025403M05</a><br>Pin, spring              | <a href="#">Buy now</a> |
| 3   | <a href="#">6AH4412100</a><br>Lever, shift rod         | <a href="#">Buy now</a> |
| 4   | <a href="#">6AH2636400</a><br>End, cable 2             | <a href="#">Buy now</a> |
| 5   | <a href="#">6G1416620194</a><br>Bracket                | <a href="#">Buy now</a> |
| 6   | <a href="#">9709506020</a><br>Bolt(7u8)                | <a href="#">Buy now</a> |
| 7   | <a href="#">9299506600</a><br>Washer, plain (646)      | <a href="#">Buy now</a> |
| 8   | <a href="#">6AH4412500</a><br>Lever, shift rod         | <a href="#">Buy now</a> |
| 10  | <a href="#">65W4411600</a><br>Spring                   | <a href="#">Buy now</a> |
| 11  | <a href="#">66R4411400</a><br>Stopper                  | <a href="#">Buy now</a> |
| 12  | <a href="#">9589506014</a><br>Bolt, flange deep recess | <a href="#">Buy now</a> |
| 13  | <a href="#">6AH4414300</a><br>Rod, shift<br>S(17.1")   | <a href="#">Buy now</a> |
| 13  | <a href="#">6AH4414310</a><br>Rod, shift<br>L(22.1")   | <a href="#">Buy now</a> |
| 14  | <a href="#">9017006015</a><br>Connector, shift rod     | <a href="#">Buy now</a> |
| 15  | <a href="#">9538006700</a><br>Nut                      | <a href="#">Buy now</a> |

## Control



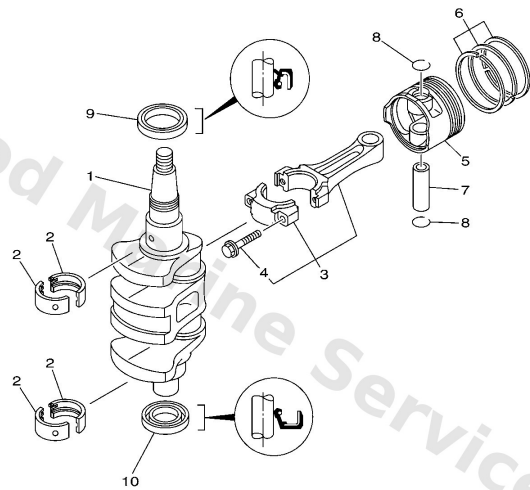
| Ref | Part  |                         |
|-----|---|-------------------------|
| 16  | <a href="#">6AH4163800</a><br>Pulley                        | <a href="#">Buy now</a> |
| 17  | <a href="#">9050820M44</a><br>Spring, torsion               | <a href="#">Buy now</a> |
| 18  | <a href="#">65W4128300</a><br>Lever, free accel.            | <a href="#">Buy now</a> |
| 19  | <a href="#">6J84126200</a><br>Joint, choke lever            | <a href="#">Buy now</a> |
| 20  | <a href="#">6AH4121100</a><br>Link, accel.                  | <a href="#">Buy now</a> |
| 21  | <a href="#">9038706139</a><br>Collar                        | <a href="#">Buy now</a> |
| 22  | <a href="#">9020106M31</a><br>Washer (6a0)                  | <a href="#">Buy now</a> |
| 23  | <a href="#">9759506555</a><br>Bolt, hexagon w/w deep recess | <a href="#">Buy now</a> |
| 24  | <a href="#">9709506014</a><br>Bolt(gj3)                     | <a href="#">Buy now</a> |
| 25  | <a href="#">6AH1457110</a><br>Bracket, throttle             | <a href="#">Buy now</a> |
| 26  | <a href="#">6AH4416700</a><br>Plunger, shift cam            | <a href="#">Buy now</a> |
| 27  | <a href="#">62Y4217100</a><br>Bushing                       | <a href="#">Buy now</a> |
| 28  | <a href="#">9020105M04</a><br>Washer, plate                 | <a href="#">Buy now</a> |
| 29  | <a href="#">9046810005</a><br>Pin, hair 6264123500          | <a href="#">Buy now</a> |
| 30  | <a href="#">6AH1449700</a><br>Stay, throttle wire           | <a href="#">Buy now</a> |

# Control



| Ref | Part  |                         |
|-----|---|-------------------------|
| 33  | <a href="#">6AH4128200</a><br>Stopper, free accel. link | <a href="#">Buy now</a> |
| 34  | <a href="#">9014906069</a><br>Screw                     | <a href="#">Buy now</a> |

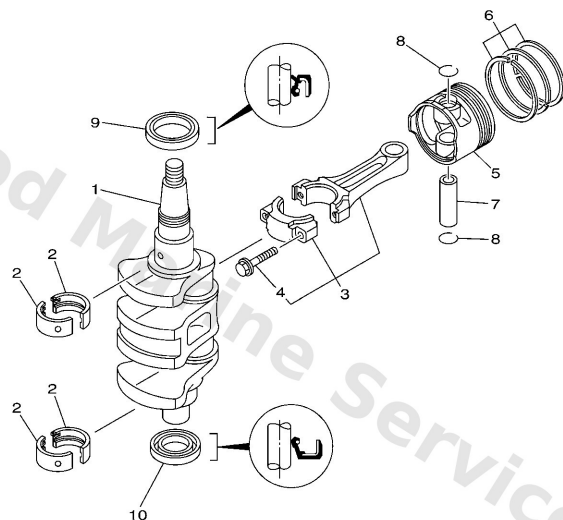
# Crankshaft & Piston



6AH1100-F030

| Ref | Part  |                         |
|-----|---|-------------------------|
| 1   | <a href="#">6AH1141100</a><br>Crankshaft                              | <a href="#">Buy now</a> |
| 2   | <a href="#">6AH1141600</a><br>Plane bearing, crankshaft 1<br>UR BROWN | <a href="#">Buy now</a> |
| 2   | <a href="#">6AH1141610</a><br>Plane bearing, crankshaft 1<br>UR BLACK | <a href="#">Buy now</a> |
| 2   | <a href="#">6AH1141620</a><br>Plane bearing, crankshaft 1<br>UR BLUE  | <a href="#">Buy now</a> |
| 3   | <a href="#">6AH1165000</a><br>Connecting rod assembly                 | <a href="#">Buy now</a> |
| 4   | <a href="#">6AH1165400</a><br>Bolt, connecting rod                    | <a href="#">Buy now</a> |
| 5   | <a href="#">6AH1163100</a><br>Piston (std)                            | <a href="#">Buy now</a> |
| 5   | <a href="#">6AH1163500</a><br>Piston (0.25mm o/s)<br>AP               | <a href="#">Buy now</a> |
| 5   | <a href="#">6AH1163600</a><br>Piston (0.50mm o/s)<br>AP               | <a href="#">Buy now</a> |
| 6   | <a href="#">6AH1160300</a><br>Piston ring set (std)                   | <a href="#">Buy now</a> |
| 6   | <a href="#">6AH1160400</a><br>Piston ring set (0.25mm o/s)<br>AP      | <a href="#">Buy now</a> |
| 6   | <a href="#">6AH1160500</a><br>Piston ring set (0.50mm o/s)<br>AP      | <a href="#">Buy now</a> |
| 7   | <a href="#">1371163310</a><br>Pin, piston                             | <a href="#">Buy now</a> |
| 8   | <a href="#">9345017129</a><br>Circlip(1ar)                            | <a href="#">Buy now</a> |
| 9   | <a href="#">9310237004</a><br>Oil seal                                | <a href="#">Buy now</a> |

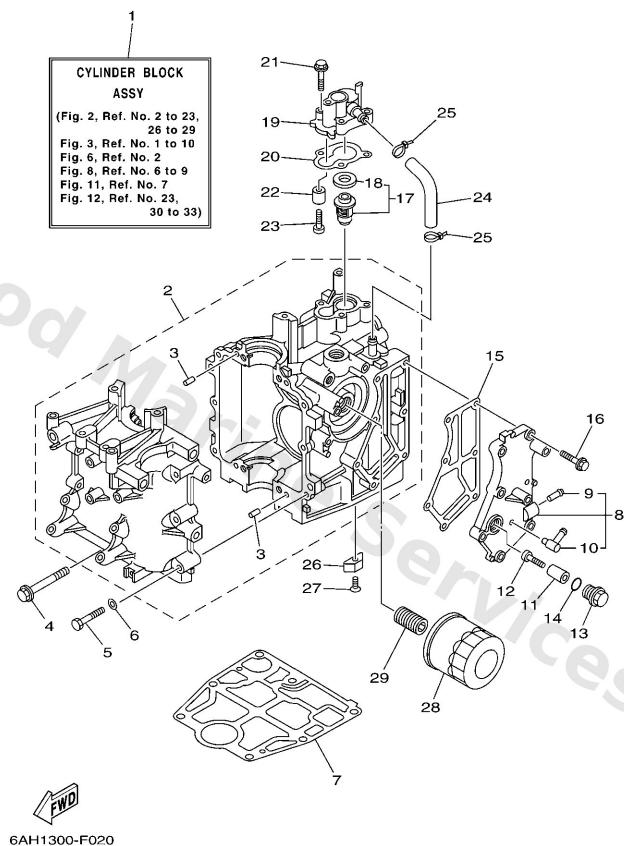
## Crankshaft & Piston



  
6AH1100-F030

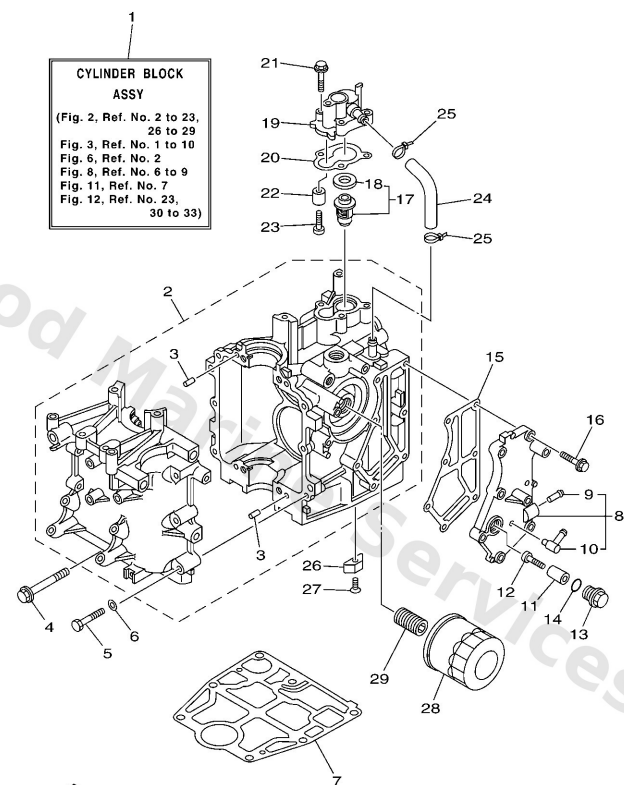
| Ref | Part                                   |                         |
|-----|--|-------------------------|
| 10  | <a href="#">9310225014</a><br>Oil seal | <a href="#">Buy now</a> |

# Cylinder & Crankcase 1



| Ref | Part  |                         |
|-----|---|-------------------------|
| 1   | <a href="#">6AHW009B001S</a><br>Cylinder block assembly     | <a href="#">Buy now</a> |
| 2   | <a href="#">6AH15100001S</a><br>Crankcase assembly          | <a href="#">Buy now</a> |
| 3   | <a href="#">9360612019</a><br>Pin, dowel (614)              | <a href="#">Buy now</a> |
| 4   | <a href="#">9011908093</a><br>Bolt, with washer             | <a href="#">Buy now</a> |
| 5   | <a href="#">9701306040</a><br>Bolt (682)                    | <a href="#">Buy now</a> |
| 6   | <a href="#">9290306600</a><br>Washer, plain (646)           | <a href="#">Buy now</a> |
| 7   | <a href="#">6AH1135100</a><br>Gasket, cylinder              | <a href="#">Buy now</a> |
| 8   | <a href="#">6AH41113001S</a><br>Outer cover, exhaust & pipe | <a href="#">Buy now</a> |
| 9   | <a href="#">6502437800</a><br>Pipe, joint 2                 | <a href="#">Buy now</a> |
| 10  | <a href="#">6761137200</a><br>Nipple, hose                  | <a href="#">Buy now</a> |
| 11  | <a href="#">6G81132500</a><br>Anode                         | <a href="#">Buy now</a> |
| 12  | <a href="#">9788005025</a><br>Screw, panhead (a93)          | <a href="#">Buy now</a> |
| 13  | <a href="#">6G81119701</a><br>Plug, blind                   | <a href="#">Buy now</a> |
| 14  | <a href="#">9321013M63</a><br>O-ring (6g8)                  | <a href="#">Buy now</a> |
| 15  | <a href="#">6AH4111400</a><br>Gasket, exhaust outer cover   | <a href="#">Buy now</a> |

# Cylinder & Crankcase 1

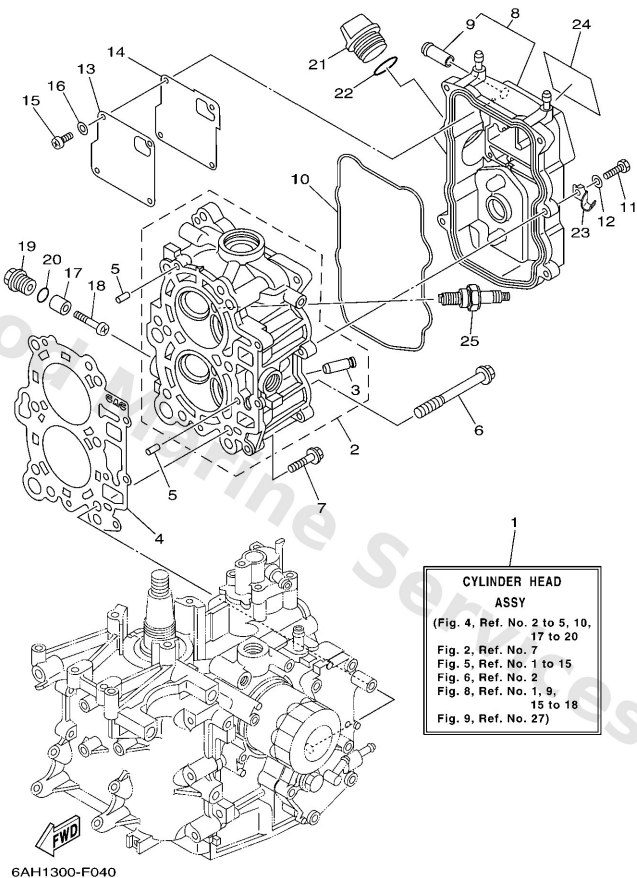


6AH1300-F020

| Ref | Part  |                         |
|-----|---|-------------------------|
| 16  | <a href="#">9011906MA3</a><br>Bolt, with washer             | <a href="#">Buy now</a> |
| 17  | <a href="#">6AH1241100</a><br>Thermostat                    | <a href="#">Buy now</a> |
| 18  | <a href="#">6881241200</a><br>Seal, thermostat              | <a href="#">Buy now</a> |
| 19  | <a href="#">6AH12413001S</a><br>Cover, thermostat           | <a href="#">Buy now</a> |
| 20  | <a href="#">6AH1241400</a><br>Gasket, cover                 | <a href="#">Buy now</a> |
| 24  | <a href="#">6AH1248100</a><br>Pipe 1                        | <a href="#">Buy now</a> |
| 25  | <a href="#">9046511M10</a><br>Clamp                         | <a href="#">Buy now</a> |
| 26  | <a href="#">6E51132500</a><br>Anode                         | <a href="#">Buy now</a> |
| 27  | <a href="#">9878004016</a><br>Screw, flat head(ga5)         | <a href="#">Buy now</a> |
| 28  | <a href="#">5GH1344020</a><br>Element assembly, oil cleaner | <a href="#">Buy now</a> |
| 29  | <a href="#">6C51285800</a><br>Bolt, union                   | <a href="#">Buy now</a> |

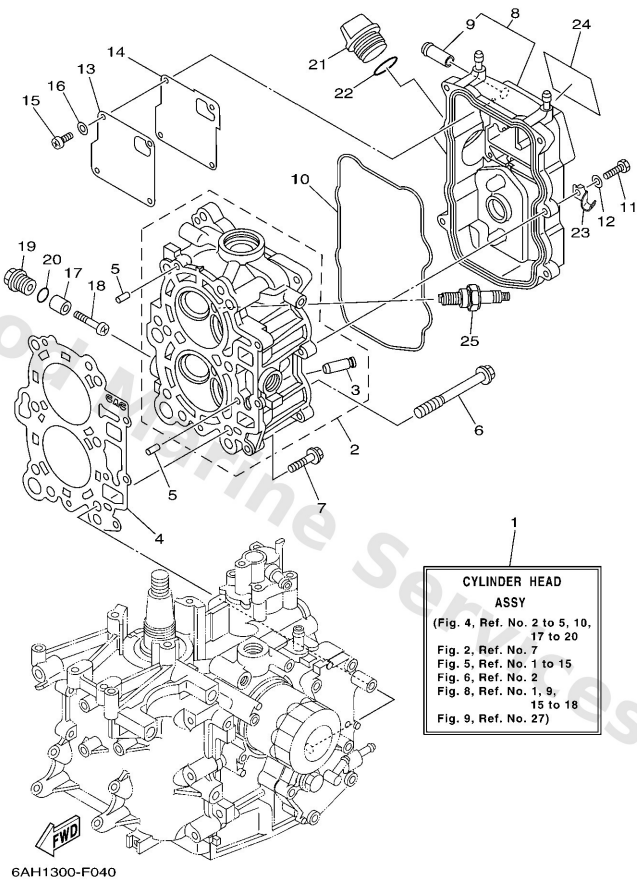


## Cylinder & Crankcase 2



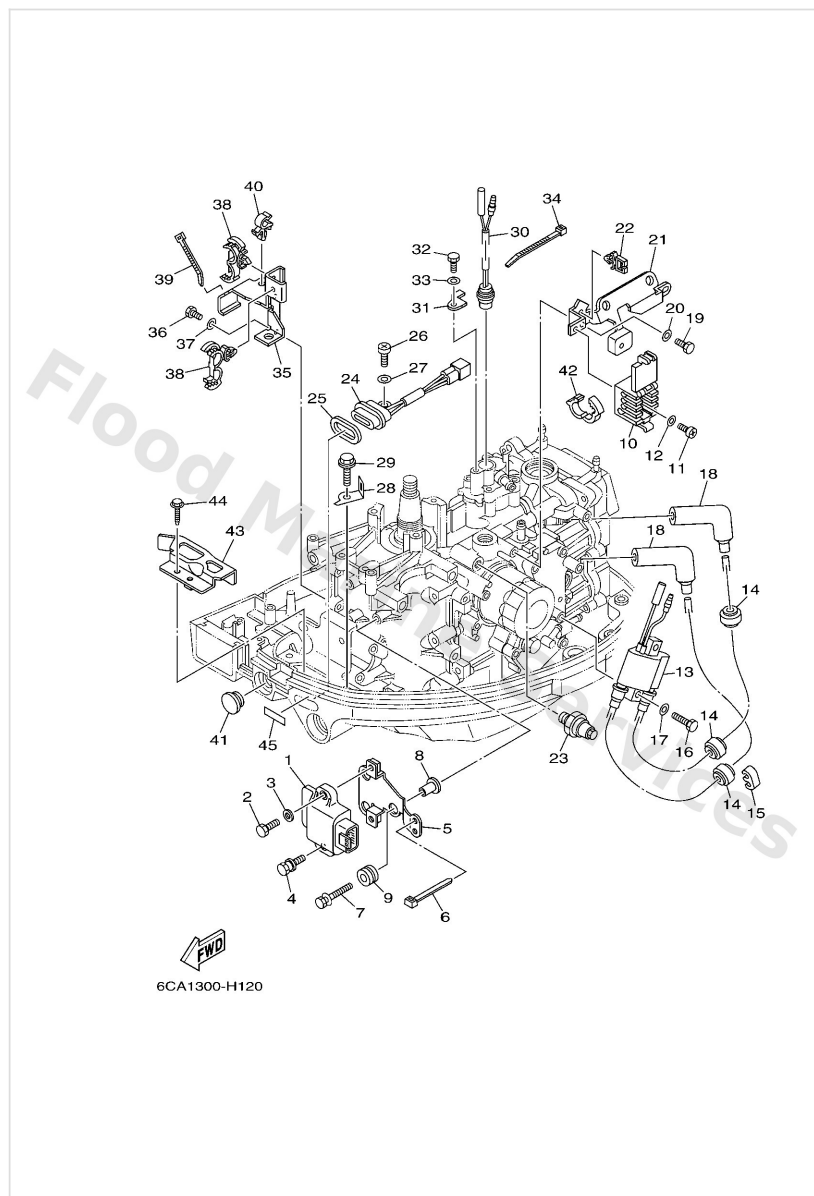
| Ref | Part  |                         |
|-----|---|-------------------------|
| 1   | <a href="#">6AGW009A001S</a><br>Cylinder head complete      | <a href="#">Buy now</a> |
| 2   | <a href="#">6AH11110094</a><br>Head, cylinder with ex valve | <a href="#">Buy now</a> |
| 3   | <a href="#">6AH1113310</a><br>Guide, valve 1                | <a href="#">Buy now</a> |
| 4   | <a href="#">6AG1118100</a><br>Gasket, cylinder head 1       | <a href="#">Buy now</a> |
| 5   | <a href="#">9360612019</a><br>Pin, dowel (614)              | <a href="#">Buy now</a> |
| 6   | <a href="#">9010509006</a><br>Bolt, flange                  | <a href="#">Buy now</a> |
| 7   | <a href="#">9011906MA3</a><br>Bolt, with washer             | <a href="#">Buy now</a> |
| 8   | <a href="#">6AH11191001S</a><br>Cover, cylinder head 1      | <a href="#">Buy now</a> |
| 9   | <a href="#">6AH1137200</a><br>Nipple, hose                  | <a href="#">Buy now</a> |
| 10  | <a href="#">6AH1135600</a><br>Seal, cylinder 2              | <a href="#">Buy now</a> |
| 11  | <a href="#">9709506020</a><br>Bolt(7u8)                     | <a href="#">Buy now</a> |
| 12  | <a href="#">9299506600</a><br>Washer, plain (646)           | <a href="#">Buy now</a> |
| 13  | <a href="#">6AH1116800</a><br>Cover, breather               | <a href="#">Buy now</a> |
| 14  | <a href="#">6AH1116900</a><br>Gasket, breather cover        | <a href="#">Buy now</a> |
| 15  | <a href="#">9850704010</a><br>Screw, pan head(6g8)          | <a href="#">Buy now</a> |

## Cylinder & Crankcase 2



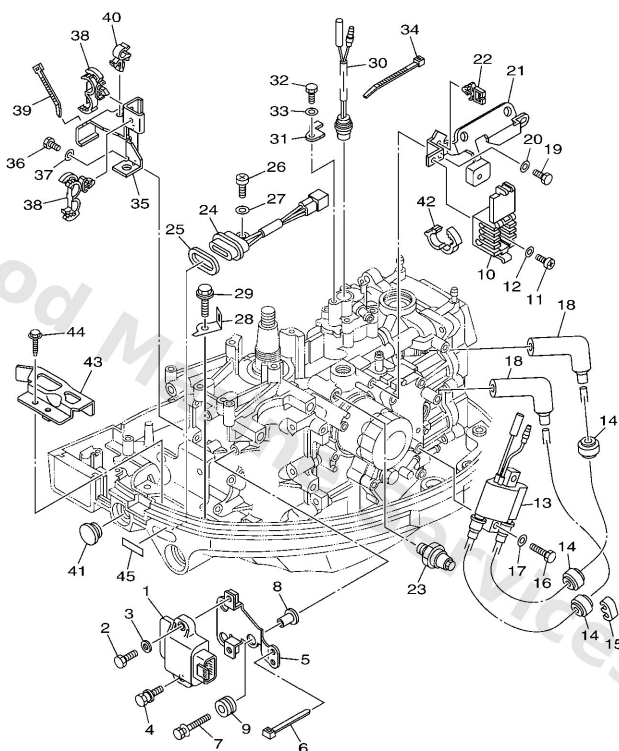
| Ref | Part   |                         |
|-----|--|-------------------------|
| 16  | <a href="#">9290704600</a><br>Washer(jf2)            | <a href="#">Buy now</a> |
| 17  | <a href="#">6G81132500</a><br>Anode                  | <a href="#">Buy now</a> |
| 18  | <a href="#">9788005025</a><br>Screw, panhead (a93)   | <a href="#">Buy now</a> |
| 19  | <a href="#">6G81119701</a><br>Plug, blind            | <a href="#">Buy now</a> |
| 20  | <a href="#">9321013M63</a><br>O-ring (6g8)           | <a href="#">Buy now</a> |
| 21  | <a href="#">6G81536300</a><br>Plug, oil              | <a href="#">Buy now</a> |
| 22  | <a href="#">9321024M79</a><br>O-ring                 | <a href="#">Buy now</a> |
| 23  | <a href="#">9046508059</a><br>Clamp                  | <a href="#">Buy now</a> |
| 24  | <a href="#">62Y1213860</a><br>Mark Caution           | <a href="#">Buy now</a> |
| 25  | <a href="#">9470200418</a><br>Plug, spark (dpr6eb-9) | <a href="#">Buy now</a> |

# Electrical 1



| Ref | Part   |                         |
|-----|--|-------------------------|
| 1   | <a href="#">6AH8554000</a><br>C.d.i. unit assembly   | <a href="#">Buy now</a> |
| 2   | <a href="#">9709506020</a><br>Bolt(7u8)              | <a href="#">Buy now</a> |
| 3   | <a href="#">9299506600</a><br>Washer, plain (646)    | <a href="#">Buy now</a> |
| 4   | <a href="#">9010906221</a><br>Bolt                   | <a href="#">Buy now</a> |
| 5   | <a href="#">6AH8194800</a><br>Bracket                | <a href="#">Buy now</a> |
| 6   | <a href="#">9046513M18</a><br>Clamp                  | <a href="#">Buy now</a> |
| 7   | <a href="#">9011906M35</a><br>Bolt, with washer      | <a href="#">Buy now</a> |
| 8   | <a href="#">9038706M60</a><br>Collar (6h3)           | <a href="#">Buy now</a> |
| 9   | <a href="#">9048010M23</a><br>Grommet(6k7)           | <a href="#">Buy now</a> |
| 10  | <a href="#">6AH8252200</a><br>Clamp, coupler         | <a href="#">Buy now</a> |
| 11  | <a href="#">9788006010</a><br>Screw pan head         | <a href="#">Buy now</a> |
| 12  | <a href="#">9020106M05</a><br>Washer, plate(6e3)     | <a href="#">Buy now</a> |
| 13  | <a href="#">6F58557012</a><br>Ignition coil assembly | <a href="#">Buy now</a> |
| 14  | <a href="#">9048025003</a><br>Grommet                | <a href="#">Buy now</a> |
| 15  | <a href="#">67F8236100</a><br>Clamp, cord            | <a href="#">Buy now</a> |

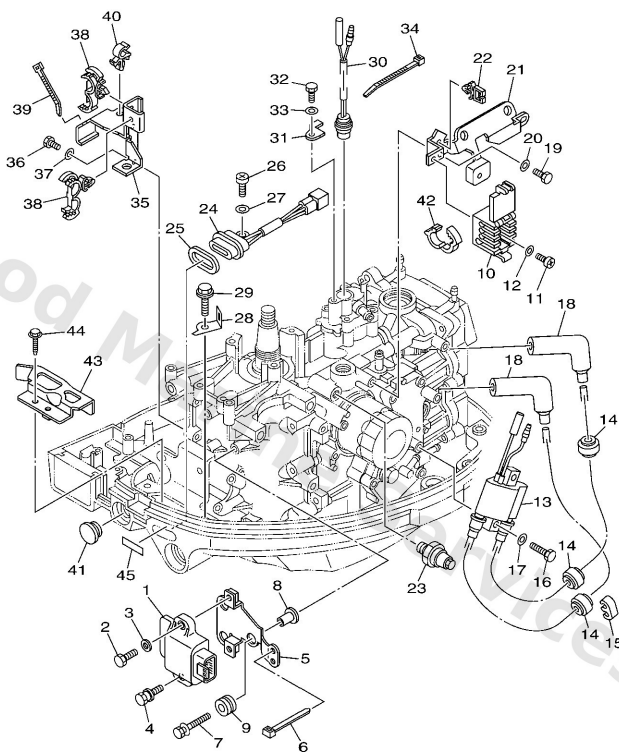
# Electrical 1



6CA1300-H120

| Ref | Part   |                         |
|-----|--|-------------------------|
| 16  | <a href="#">9709506025</a><br>Bolt                         | <a href="#">Buy now</a> |
| 18  | <a href="#">6AH8237000</a><br>Plug cap assembly            | <a href="#">Buy now</a> |
| 19  | <a href="#">9709506014</a><br>Bolt(gj3)                    | <a href="#">Buy now</a> |
| 21  | <a href="#">6AH8554200</a><br>Bracket                      | <a href="#">Buy now</a> |
| 22  | <a href="#">9046407M56</a><br>Clamp                        | <a href="#">Buy now</a> |
| 23  | <a href="#">64J8250400</a><br>Oil pressure switch assembly | <a href="#">Buy now</a> |
| 24  | <a href="#">62Y8430100</a><br>Pilot light assembly 1       | <a href="#">Buy now</a> |
| 25  | <a href="#">6H48358900</a><br>Gasket                       | <a href="#">Buy now</a> |
| 26  | <a href="#">9788506012</a><br>Screw, pan head(62j)         | <a href="#">Buy now</a> |
| 28  | <a href="#">6AH8238800</a><br>Plate                        | <a href="#">Buy now</a> |
| 29  | <a href="#">9010906M86</a><br>Bolt                         | <a href="#">Buy now</a> |
| 30  | <a href="#">6AH8256000</a><br>Thermo switch assembly       | <a href="#">Buy now</a> |
| 31  | <a href="#">6AH8258800</a><br>Plate                        | <a href="#">Buy now</a> |
| 34  | <a href="#">9046511M10</a><br>Clamp                        | <a href="#">Buy now</a> |
| 35  | <a href="#">6AH8255400</a><br>Stay, neutral switch         | <a href="#">Buy now</a> |

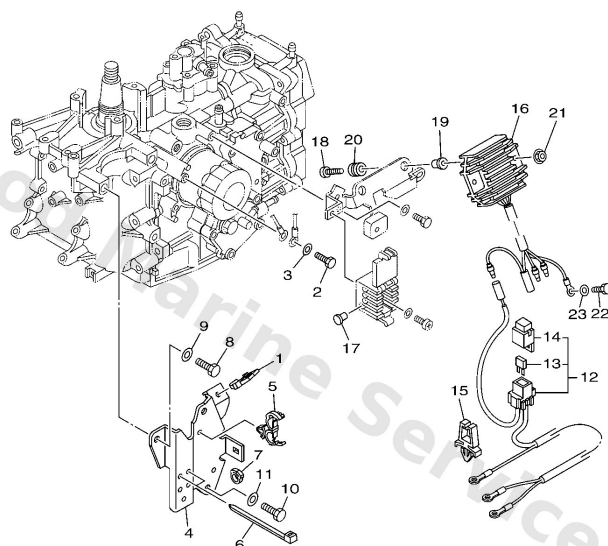
# Electrical 1



6CA1300-H120

| Ref | Part  |                         |
|-----|---|-------------------------|
| 36  | <a href="#">9709506016</a><br>Bolt, hexagon deep recess | <a href="#">Buy now</a> |
| 38  | <a href="#">9046418246</a><br>Clamp(4tr)                | <a href="#">Buy now</a> |
| 40  | <a href="#">9046410M32</a><br>Clamp(6m7)                | <a href="#">Buy now</a> |
| 41  | <a href="#">6G14272500</a><br>Grommet                   | <a href="#">Buy now</a> |
| 42  | <a href="#">9046416003</a><br>Clamp                     | <a href="#">Buy now</a> |
| 43  | <a href="#">6AH8238900</a><br>Plate 2                   | <a href="#">Buy now</a> |
| 45  | <a href="#">67C8541500</a><br>Mark, signal lamp         | <a href="#">Buy now</a> |

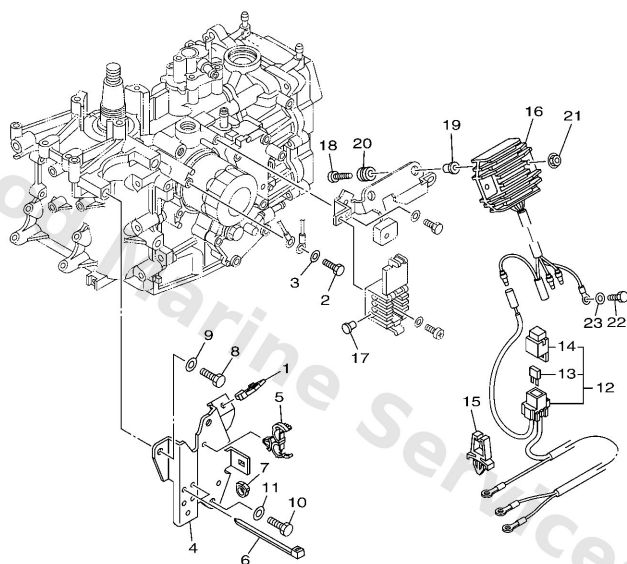
## Electrical 2



  
6CA1300-H130

| Ref | Part   |                         |
|-----|--|-------------------------|
| 1   | <a href="#">9046408004</a><br>Clamp                                | <a href="#">Buy now</a> |
| 22  | <a href="#">9709506014</a><br>Bolt(gj3)<br>AP                      | <a href="#">Buy now</a> |
| 23  | <a href="#">9299506600</a><br>Washer, plain (646)<br>AP            | <a href="#">Buy now</a> |
| 4   | <a href="#">6AH8239800</a><br>Plate 3                              | <a href="#">Buy now</a> |
| 5   | <a href="#">9046418246</a><br>Clamp(4tr)                           | <a href="#">Buy now</a> |
| 6   | <a href="#">9046513M18</a><br>Clamp                                | <a href="#">Buy now</a> |
| 7   | <a href="#">9046409010</a><br>Clamp                                | <a href="#">Buy now</a> |
| 8   | <a href="#">9709508025</a><br>Bolt (62g)                           | <a href="#">Buy now</a> |
| 9   | <a href="#">9299508600</a><br>Washer, plain (663)                  | <a href="#">Buy now</a> |
| 10  | <a href="#">9709508016</a><br>Bolt, hexagon deep recess            | <a href="#">Buy now</a> |
| 12  | <a href="#">6AH8194900</a><br>Wire, lead<br>AP                     | <a href="#">Buy now</a> |
| 13  | <a href="#">67F8215100</a><br>Fuse                                 | <a href="#">Buy now</a> |
| 14  | <a href="#">67F8215B00</a><br>Cap (black)                          | <a href="#">Buy now</a> |
| 15  | <a href="#">9046406001</a><br>Clamp<br>AP                          | <a href="#">Buy now</a> |
| 16  | <a href="#">6AH8196000</a><br>Rectifier & regulator assembly<br>AP | <a href="#">Buy now</a> |

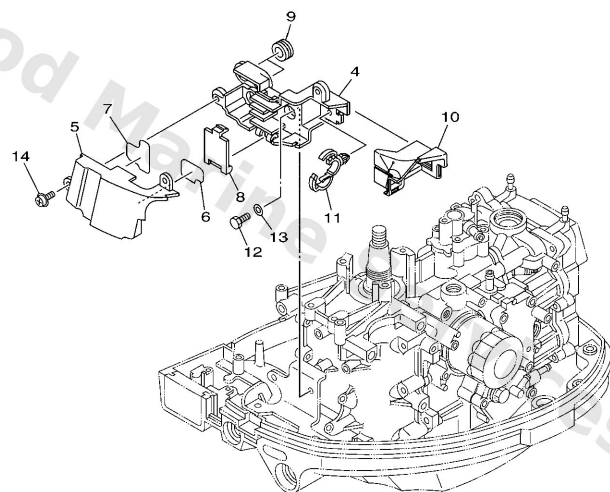
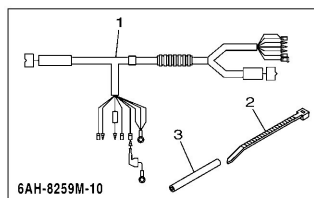
## Electrical 2



  
6CA1300-H130

| Ref | Part   |                         |
|-----|--|-------------------------|
| 17  | <a href="#">7038211900</a><br>Cover, lead wire<br>AP | <a href="#">Buy now</a> |
| 18  | <a href="#">9898006030</a><br>Screw, bind(j39)<br>AP | <a href="#">Buy now</a> |
| 19  | <a href="#">9038706M70</a><br>Collar (6h5)<br>AP     | <a href="#">Buy now</a> |
| 20  | <a href="#">9048013M24</a><br>Grommet (6e9)<br>AP    | <a href="#">Buy now</a> |
| 21  | <a href="#">9578006500</a><br>Nut, flange(7nb)<br>AP | <a href="#">Buy now</a> |

## Electrical 3

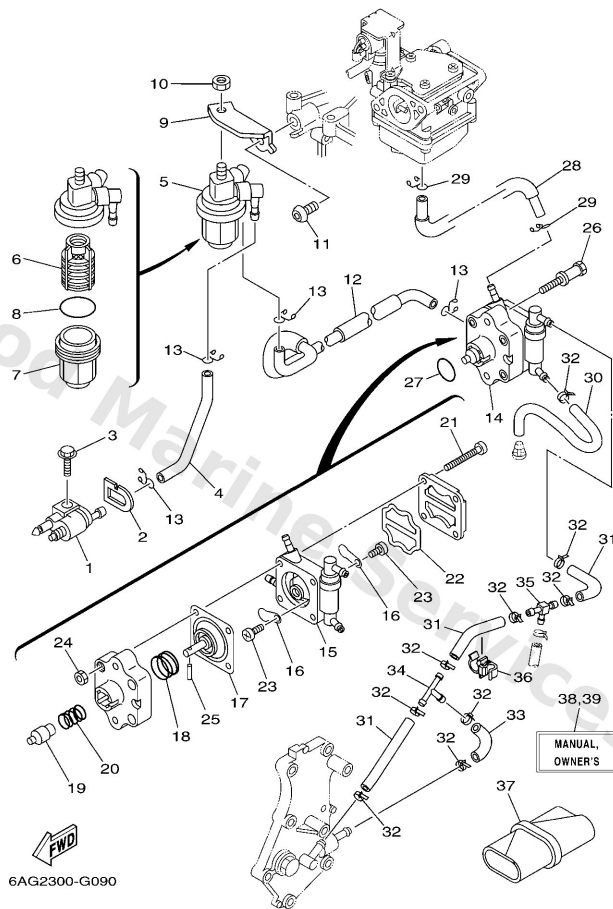


  
6CA1300-H140

| Ref | Part  |                         |
|-----|---|-------------------------|
| 1   | <a href="#">6AH8259M10</a><br>Wire harness & extension wire | <a href="#">Buy now</a> |
| 2   | <a href="#">9046513M18</a><br>Clamp                         | <a href="#">Buy now</a> |
| 3   | <a href="#">9044508029</a><br>Hose                          | <a href="#">Buy now</a> |
| 4   | <a href="#">6AH8552A00</a><br>Housing                       | <a href="#">Buy now</a> |
| 5   | <a href="#">6AH8552E00</a><br>Cover, case                   | <a href="#">Buy now</a> |
| 6   | <a href="#">6AH4273530</a><br>Protector                     | <a href="#">Buy now</a> |
| 7   | <a href="#">6AH4273540</a><br>Protector                     | <a href="#">Buy now</a> |
| 8   | <a href="#">6AH8553700</a><br>Cover                         | <a href="#">Buy now</a> |
| 9   | <a href="#">9048019368</a><br>Grommet(75v)                  | <a href="#">Buy now</a> |
| 10  | <a href="#">6AH8554700</a><br>Damper                        | <a href="#">Buy now</a> |
| 11  | <a href="#">9046420181</a><br>Clamp(4ap)                    | <a href="#">Buy now</a> |
| 12  | <a href="#">9709506014</a><br>Bolt(gj3)                     | <a href="#">Buy now</a> |
| 13  | <a href="#">9299506600</a><br>Washer, plain (646)           | <a href="#">Buy now</a> |
| 14  | <a href="#">9798506214</a><br>Screw, with washer            | <a href="#">Buy now</a> |

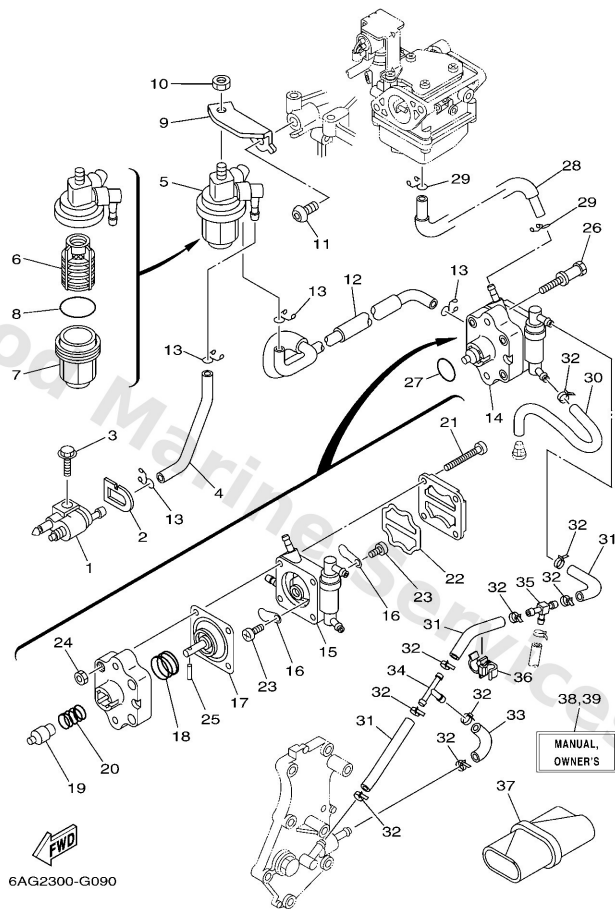


# Fuel



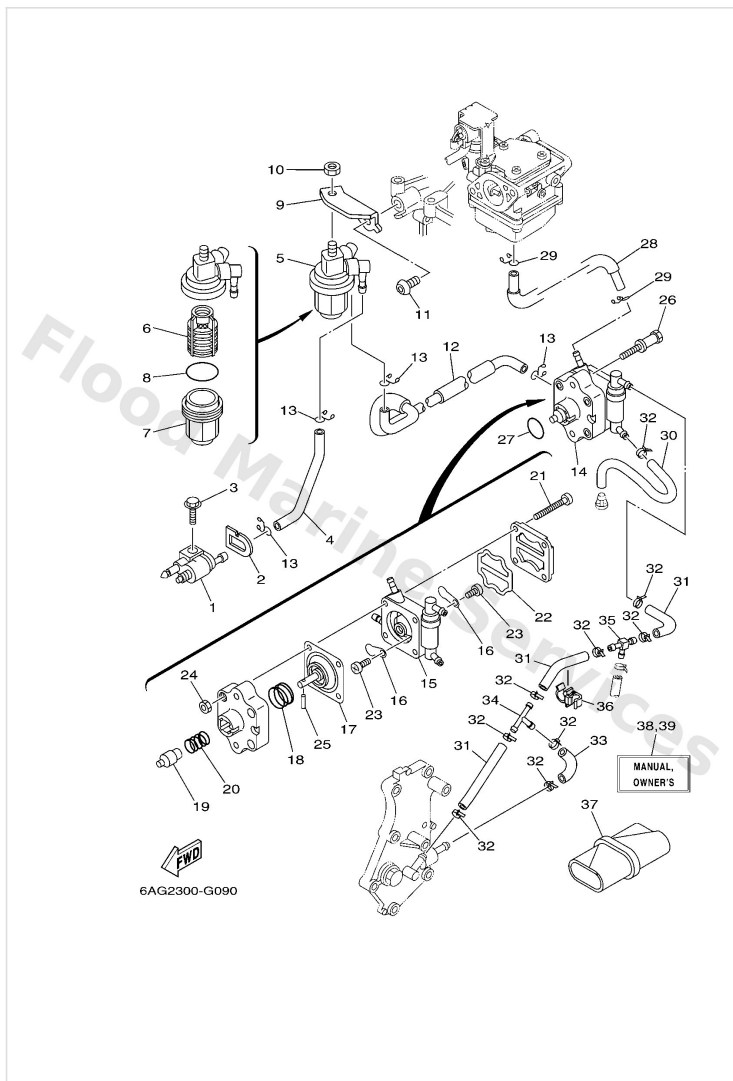
| Ref | Part  |                         |
|-----|---|-------------------------|
| 1   | <a href="#">6G12430402</a><br>Fuel pipe joint comp. 1 | <a href="#">Buy now</a> |
| 2   | <a href="#">61N2432900</a><br>Seal                    | <a href="#">Buy now</a> |
| 3   | <a href="#">9589506020</a><br>Bolt, flange(jk3)       | <a href="#">Buy now</a> |
| 4   | <a href="#">6AH2431100</a><br>Pipe, fuel 1            | <a href="#">Buy now</a> |
| 5   | <a href="#">61N2456000</a><br>Filter assembly         | <a href="#">Buy now</a> |
| 6   | <a href="#">61N2456300</a><br>Element, filter         | <a href="#">Buy now</a> |
| 7   | <a href="#">61N2452100</a><br>Cup, filter             | <a href="#">Buy now</a> |
| 8   | <a href="#">9321032738</a><br>O-ring(1wg)             | <a href="#">Buy now</a> |
| 9   | <a href="#">6AH2456600</a><br>Bracket, filter         | <a href="#">Buy now</a> |
| 10  | <a href="#">9538008600</a><br>Nut (661)               | <a href="#">Buy now</a> |
| 11  | <a href="#">9011108055</a><br>Bolt,hex. socket button | <a href="#">Buy now</a> |
| 12  | <a href="#">6AH2431200</a><br>Pipe 2                  | <a href="#">Buy now</a> |
| 13  | <a href="#">9046709M17</a><br>Clip(6k8)               | <a href="#">Buy now</a> |
| 14  | <a href="#">6AH2441000</a><br>Fuel pump assembly      | <a href="#">Buy now</a> |
| 15  | <a href="#">6AH2441300</a><br>Body 2                  | <a href="#">Buy now</a> |

# Fuel



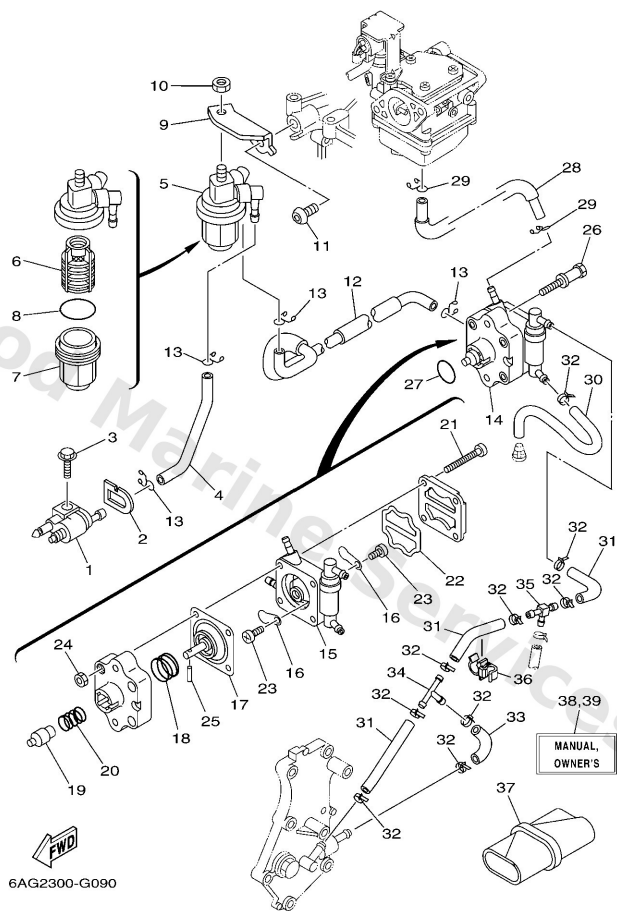
| Ref | Part  |                         |
|-----|---|-------------------------|
| 16  | <a href="#">6A02442101</a><br>Valve, check      | <a href="#">Buy now</a> |
| 17  | <a href="#">66M2441111</a><br>Diaphragm         | <a href="#">Buy now</a> |
| 18  | <a href="#">66M2442300</a><br>Spring, diaphragm | <a href="#">Buy now</a> |
| 19  | <a href="#">66M1313110</a><br>Plunger           | <a href="#">Buy now</a> |
| 20  | <a href="#">66M2445400</a><br>Spring            | <a href="#">Buy now</a> |
| 21  | <a href="#">66M2444400</a><br>Screw             | <a href="#">Buy now</a> |
| 22  | <a href="#">66M2447101</a><br>Diaphragm         | <a href="#">Buy now</a> |
| 23  | <a href="#">6E71432500</a><br>Screw, pan head   | <a href="#">Buy now</a> |
| 24  | <a href="#">9538004600</a><br>Nut,hex           | <a href="#">Buy now</a> |
| 25  | <a href="#">66M2437400</a><br>Pin               | <a href="#">Buy now</a> |
| 26  | <a href="#">9010906215</a><br>Bolt              | <a href="#">Buy now</a> |
| 27  | <a href="#">9321020M65</a><br>O-ring            | <a href="#">Buy now</a> |
| 28  | <a href="#">6AH2431300</a><br>Pipe 3            | <a href="#">Buy now</a> |
| 30  | <a href="#">6AH2431500</a><br>Pipe 5            | <a href="#">Buy now</a> |
| 31  | <a href="#">9044509026</a><br>Hose (I420)       | <a href="#">Buy now</a> |

# Fuel



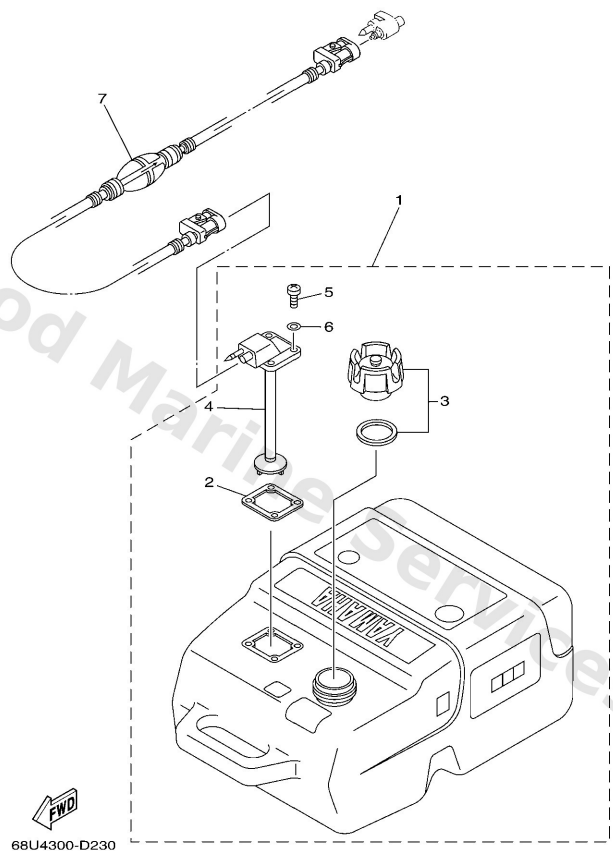
| Ref | Part   |                         |
|-----|--|-------------------------|
| 32  | <a href="#">9046511M10</a><br>Clamp                                      | <a href="#">Buy now</a> |
| 33  | <a href="#">6AH2431700</a><br>Pipe 7                                     | <a href="#">Buy now</a> |
| 34  | <a href="#">6882437800</a><br>Pipe, joint                                | <a href="#">Buy now</a> |
| 35  | <a href="#">6C52437800</a><br>Pipe, joint 4                              | <a href="#">Buy now</a> |
| 36  | <a href="#">9046409018</a><br>Clamp                                      | <a href="#">Buy now</a> |
| 37  | <a href="#">62Y2810000</a><br>Tool kit                                   | <a href="#">Buy now</a> |
| 38  | <a href="#">6AG2819973D0</a><br>Om f13.5b/f15c/f20b/f9.9h '09<br>UR (NL) | <a href="#">Buy now</a> |
| 38  | <a href="#">6AG2819973E0</a><br>Om f13.5b/f15c/f20b/f9.9h '09<br>UR (E)  | <a href="#">Buy now</a> |
| 38  | <a href="#">6AG2819973F0</a><br>Om f13.5b/f15c/f20b/f9.9h '09<br>UR (F)  | <a href="#">Buy now</a> |
| 38  | <a href="#">6AG2819973G0</a><br>Om f13.5b/f15c/f20b/f9.9h '09<br>UR (D)  | <a href="#">Buy now</a> |
| 38  | <a href="#">6AG2819973H0</a><br>Om f13.5b/f15c/f20b/f9.9h '09<br>UR (I)  | <a href="#">Buy now</a> |
| 38  | <a href="#">6AG2819973S0</a><br>Om f13.5b/f15c/f20b/f9.9h '09<br>UR (ES) | <a href="#">Buy now</a> |
| 39  | <a href="#">6AG2819983K0</a><br>Om f13.5b/f15c/f20b/f9.9h '09<br>UR (DK) | <a href="#">Buy now</a> |
| 39  | <a href="#">6AG2819983L0</a><br>Om f13.5b/f15c/f20b/f9.9h '09<br>UR (SF) | <a href="#">Buy now</a> |
| 39  | <a href="#">6AG2819983M0</a><br>Om f13.5b/f15c/f20b/f9.9h '09<br>UR (S)  | <a href="#">Buy now</a> |

# Fuel



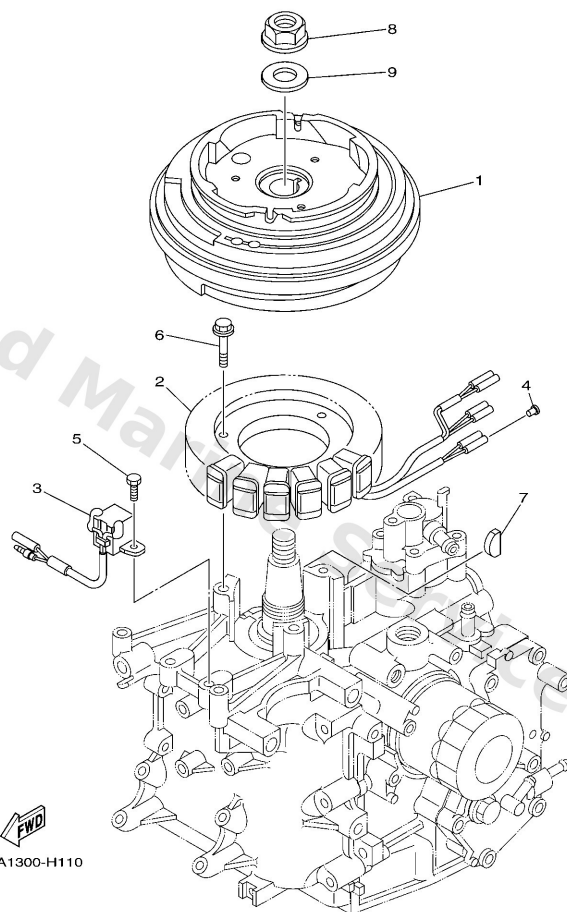
| Ref | Part   |                         |
|-----|--|-------------------------|
| 39  | <a href="#">6AG2819983N0</a><br>Om f13.5b/f15c/f20b/f9.9h '09<br>UR (N)  | <a href="#">Buy now</a> |
| 39  | <a href="#">6AG2819983P0</a><br>Om f13.5b/f15c/f20b/f9.9h '09<br>UR (P)  | <a href="#">Buy now</a> |
| 39  | <a href="#">6AG2819983R0</a><br>Om f13.5b/f15c/f20b/f9.9h '09<br>UR (GR) | <a href="#">Buy now</a> |

# Fuel Tank



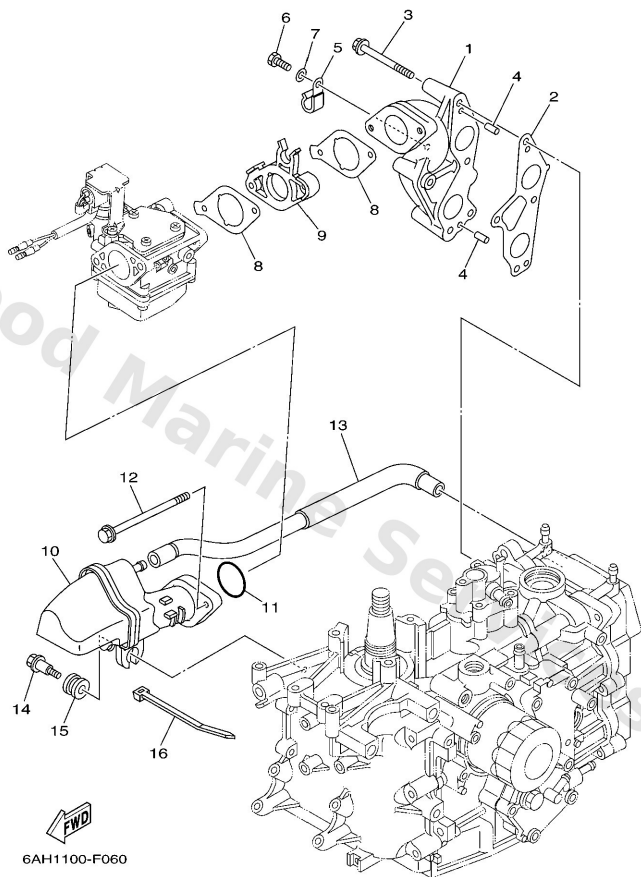
| Ref | Part   |                         |
|-----|--|-------------------------|
| 1   | <a href="#">6YK2420103</a><br>Fuel Tank assembly (25L)<br>AP | <a href="#">Buy now</a> |
| 2   | <a href="#">6YL2426801</a><br>Gasket, fuel meter             | <a href="#">Buy now</a> |
| 3   | <a href="#">6YK2461001</a><br>Cap assembly                   | <a href="#">Buy now</a> |
| 4   | <a href="#">6YK2426001</a><br>Fuel meter assembly            | <a href="#">Buy now</a> |
| 5   | <a href="#">9015705M16</a><br>Screw, pan head                | <a href="#">Buy now</a> |
| 6   | <a href="#">6YL2432900</a><br>Seal                           | <a href="#">Buy now</a> |
| 7   | <a href="#">6YL2430654</a><br>Fuel pipe comp. 1<br>AP        | <a href="#">Buy now</a> |

# Generator



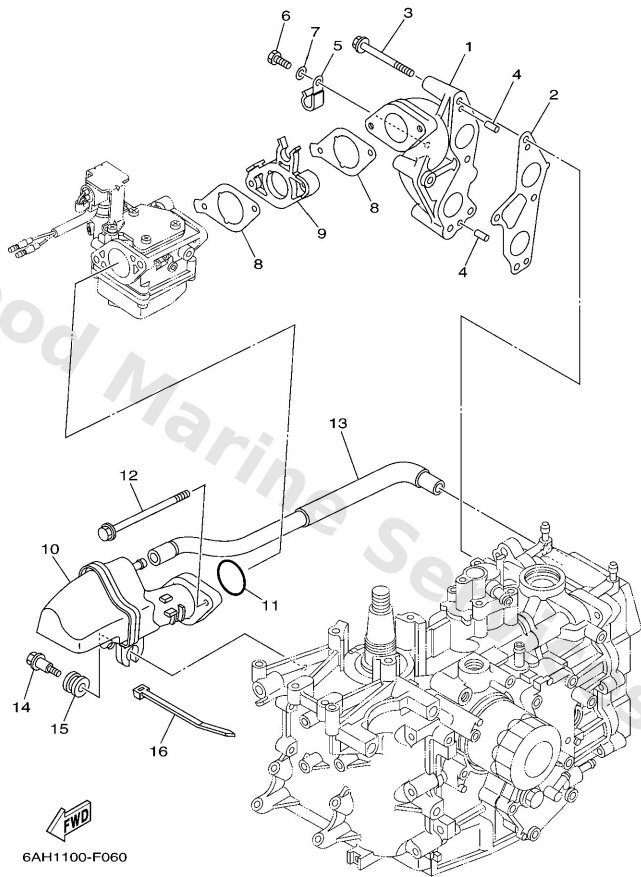
| Ref | Part   |                         |
|-----|--|-------------------------|
| 1   | <a href="#">6AH8555000</a><br>Rotor assembly           | <a href="#">Buy now</a> |
| 2   | <a href="#">6AH8551000</a><br>Stator assembly          | <a href="#">Buy now</a> |
| 3   | <a href="#">6AH8558000</a><br>Coil, pulser             | <a href="#">Buy now</a> |
| 4   | <a href="#">7038211900</a><br>Cover, lead wire         | <a href="#">Buy now</a> |
| 5   | <a href="#">9709505012</a><br>Bolt, hexagon            | <a href="#">Buy now</a> |
| 6   | <a href="#">9589506030</a><br>Bolt, flange deep recess | <a href="#">Buy now</a> |
| 7   | <a href="#">9028005013</a><br>Key, woodruff            | <a href="#">Buy now</a> |
| 8   | <a href="#">9017916M05</a><br>Nut (689)                | <a href="#">Buy now</a> |
| 9   | <a href="#">9020116M44</a><br>Washer (689)             | <a href="#">Buy now</a> |

# Intake



| Ref | Part  |                         |
|-----|---|-------------------------|
| 1   | <a href="#">6AH136410094</a><br>Manifold 1                  | <a href="#">Buy now</a> |
| 2   | <a href="#">6AH1364500</a><br>Gasket, manifold 1            | <a href="#">Buy now</a> |
| 3   | <a href="#">9759506555</a><br>Bolt, hexagon w/w deep recess | <a href="#">Buy now</a> |
| 4   | <a href="#">9169050014</a><br>Pin, spring (647)             | <a href="#">Buy now</a> |
| 5   | <a href="#">9046508M83</a><br>Clamp                         | <a href="#">Buy now</a> |
| 6   | <a href="#">9709506012</a><br>Bolt(gh1)                     | <a href="#">Buy now</a> |
| 7   | <a href="#">9299506600</a><br>Washer, plain (646)           | <a href="#">Buy now</a> |
| 8   | <a href="#">6AH1364600</a><br>Gasket, manifold 2            | <a href="#">Buy now</a> |
| 9   | <a href="#">6AH1427100</a><br>Insulator                     | <a href="#">Buy now</a> |
| 10  | <a href="#">6AH1444000</a><br>Silencer assembly, intake     | <a href="#">Buy now</a> |
| 11  | <a href="#">9321035M86</a><br>O-ring(6l2)                   | <a href="#">Buy now</a> |
| 12  | <a href="#">9589506100</a><br>Bolt, flange deep recess      | <a href="#">Buy now</a> |
| 13  | <a href="#">6AH1537300</a><br>Pipe, breather                | <a href="#">Buy now</a> |
| 14  | <a href="#">9010906MA1</a><br>Bolt                          | <a href="#">Buy now</a> |
| 15  | <a href="#">9048016616</a><br>Grommet                       | <a href="#">Buy now</a> |

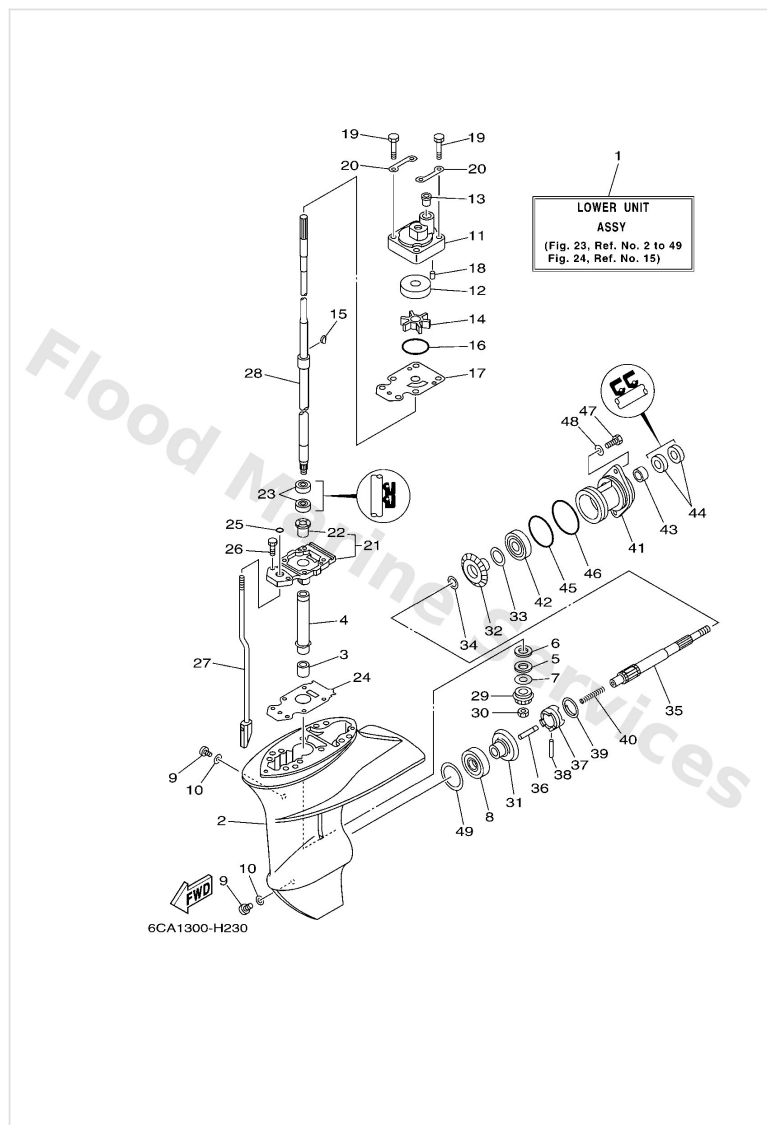
# Intake



| Ref | Part                                |                         |
|-----|-------------------------------------|-------------------------|
| 16  | <a href="#">9046513M18</a><br>Clamp | <a href="#">Buy now</a> |

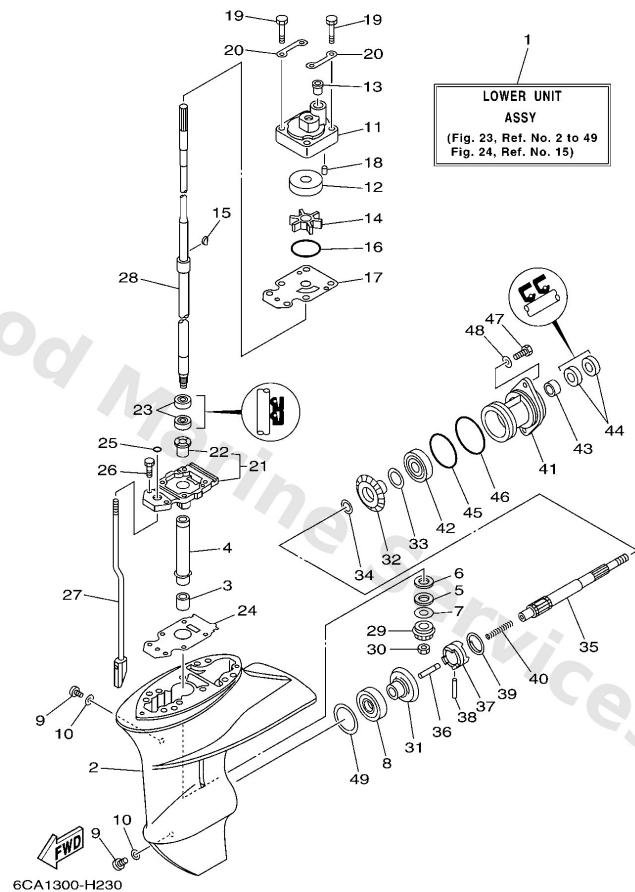


## Lower Casing & Drive 1



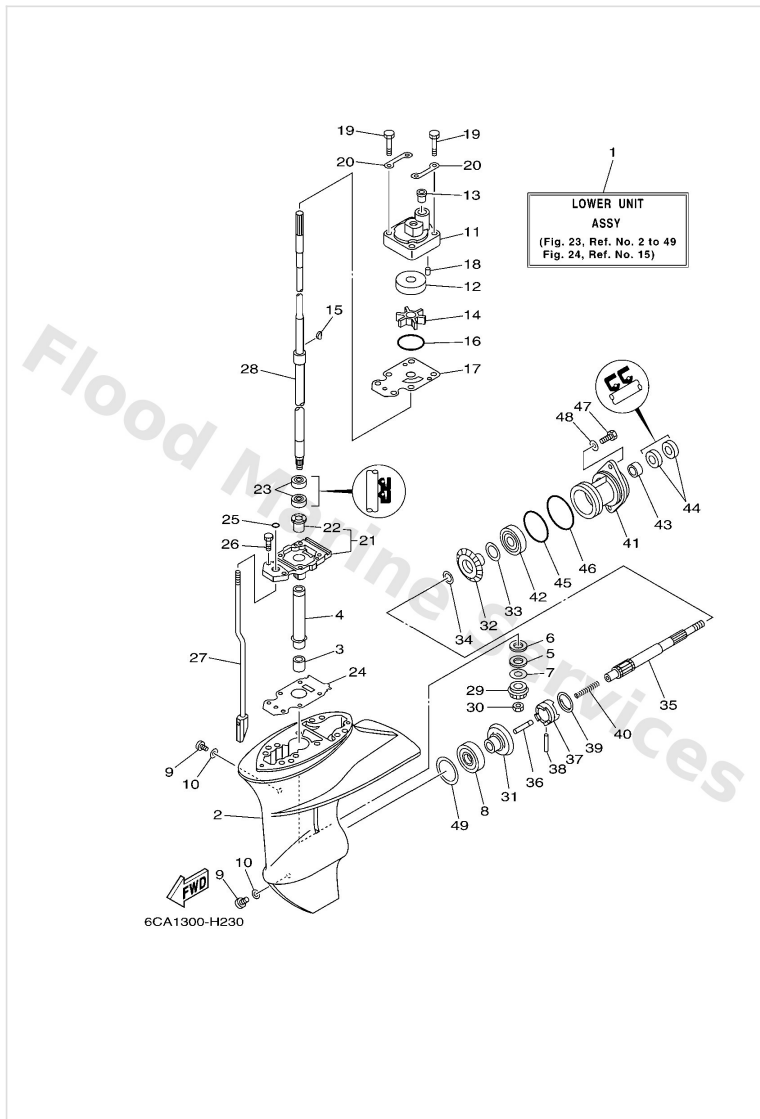
| Ref | Part  |                         |
|-----|---|-------------------------|
| 1   | <a href="#">6AH45300004D</a><br>Lower unit assembly<br>S(17.1") | <a href="#">Buy now</a> |
| 1   | <a href="#">6AH45300104D</a><br>Lower unit assembly<br>L(22.1") | <a href="#">Buy now</a> |
| 2   | <a href="#">6AH45311004D</a><br>Casing, lower                   | <a href="#">Buy now</a> |
| 3   | <a href="#">93315314V8</a><br>Bearing, needle (6e7)             | <a href="#">Buy now</a> |
| 4   | <a href="#">63V4553600</a><br>Sleeve, drive shaft               | <a href="#">Buy now</a> |
| 5   | <a href="#">9020914011</a><br>Washer                            | <a href="#">Buy now</a> |
| 6   | <a href="#">9020115017</a><br>Washer, plate                     | <a href="#">Buy now</a> |
| 7   | <a href="#">6E84558710</a><br>Shim (t:1.13mm)<br>UR             | <a href="#">Buy now</a> |
| 7   | <a href="#">6E84558730</a><br>Shim (t:1.20mm)<br>UR             | <a href="#">Buy now</a> |
| 8   | <a href="#">9333200005</a><br>Brg,cyl-cal roller 0.19g nt       | <a href="#">Buy now</a> |
| 9   | <a href="#">9034008002</a><br>Plug, straight screw              | <a href="#">Buy now</a> |
| 10  | <a href="#">9043008020</a><br>Gasket                            | <a href="#">Buy now</a> |
| 11  | <a href="#">6AH4431100</a><br>Housing, water pump               | <a href="#">Buy now</a> |
| 12  | <a href="#">63V4432200</a><br>Insert, cartridge                 | <a href="#">Buy now</a> |
| 13  | <a href="#">6L24436700</a><br>Damper, water seal 3              | <a href="#">Buy now</a> |

# Lower Casing & Drive 1



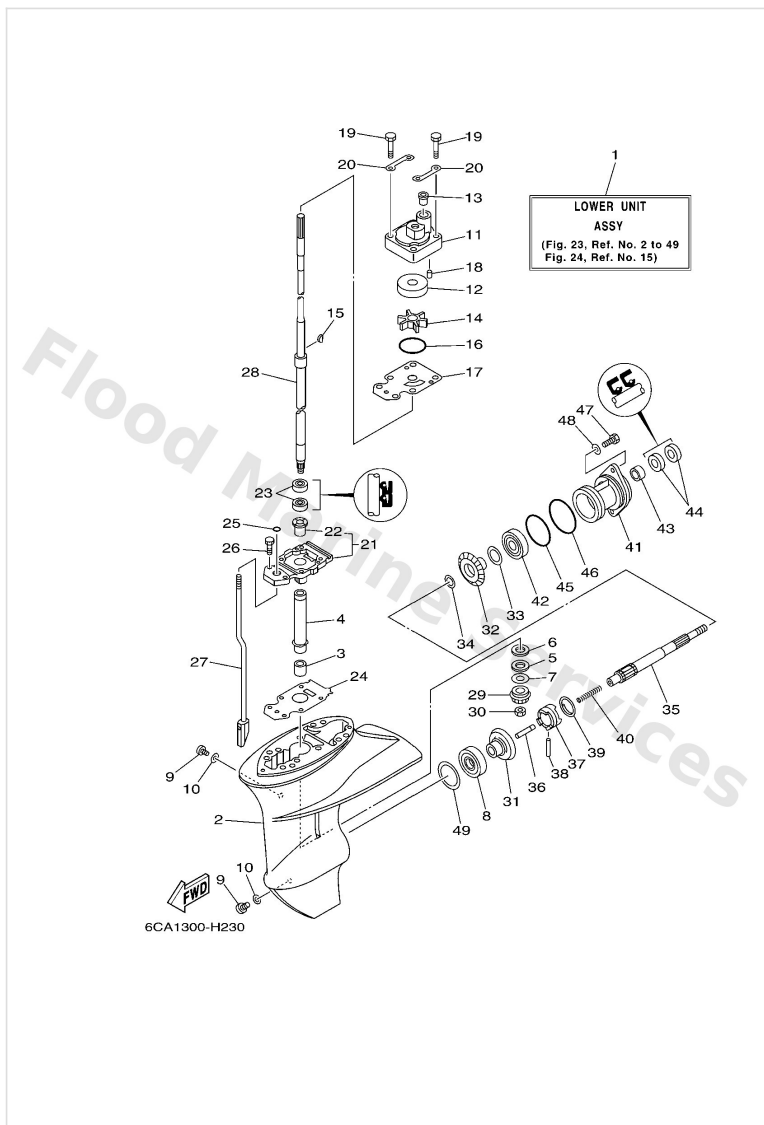
| Ref | Part   |                         |
|-----|--|-------------------------|
| 14  | <a href="#">63V4435201</a><br>Impeller                       | <a href="#">Buy now</a> |
| 15  | <a href="#">6644433800</a><br>Key, woodruff                  | <a href="#">Buy now</a> |
| 16  | <a href="#">9321049046</a><br>O-ring (620)                   | <a href="#">Buy now</a> |
| 17  | <a href="#">68T4432300</a><br>Outer plate, cartridge         | <a href="#">Buy now</a> |
| 18  | <a href="#">9360412M07</a><br>Pin, dowel (688)               | <a href="#">Buy now</a> |
| 19  | <a href="#">9708008045</a><br>Bolt, hexagon                  | <a href="#">Buy now</a> |
| 20  | <a href="#">63V4432800</a><br>Plate                          | <a href="#">Buy now</a> |
| 21  | <a href="#">69G45331015B</a><br>Housing, bearing             | <a href="#">Buy now</a> |
| 22  | <a href="#">6264531609</a><br>Bushing, drive shaft 1         | <a href="#">Buy now</a> |
| 23  | <a href="#">9310120001</a><br>Oil seal                       | <a href="#">Buy now</a> |
| 24  | <a href="#">69G45315A0</a><br>Packing, lower casing          | <a href="#">Buy now</a> |
| 25  | <a href="#">9321006ME6</a><br>O-ring                         | <a href="#">Buy now</a> |
| 26  | <a href="#">9708008025</a><br>Screw, bind(j36)               | <a href="#">Buy now</a> |
| 27  | <a href="#">6AH4415000</a><br>Shift cam assembly<br>S(17.1") | <a href="#">Buy now</a> |
| 27  | <a href="#">6AH4415010</a><br>Shift cam assembly<br>L(22.1") | <a href="#">Buy now</a> |

# Lower Casing & Drive 1



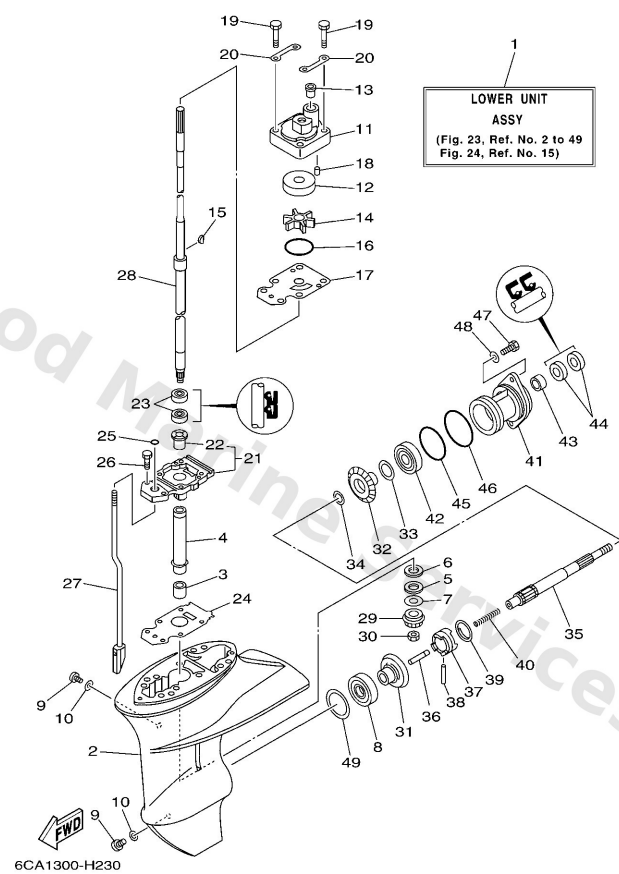
| Ref | Part   |                         |
|-----|--|-------------------------|
| 28  | <a href="#">6AH4551000</a><br>Drive shaft assembly<br>S(17.1") | <a href="#">Buy now</a> |
| 28  | <a href="#">6AH4551010</a><br>Drive shaft assembly<br>L(22.1") | <a href="#">Buy now</a> |
| 29  | <a href="#">63V4555100</a><br>Pinion                           | <a href="#">Buy now</a> |
| 30  | <a href="#">9017908M06</a><br>Nut (6e7)                        | <a href="#">Buy now</a> |
| 31  | <a href="#">6E74556001</a><br>Gear                             | <a href="#">Buy now</a> |
| 32  | <a href="#">6E74557100</a><br>Gear 2                           | <a href="#">Buy now</a> |
| 33  | <a href="#">6264557700</a><br>Shim (t:0.10mm)<br>UR            | <a href="#">Buy now</a> |
| 33  | <a href="#">6264557710</a><br>Shim (t:0.20mm)<br>UR            | <a href="#">Buy now</a> |
| 33  | <a href="#">6264557720</a><br>Shim (t:0.30mm)<br>UR            | <a href="#">Buy now</a> |
| 33  | <a href="#">6264557730</a><br>Shim (t:0.40mm)<br>UR            | <a href="#">Buy now</a> |
| 33  | <a href="#">6264557740</a><br>Shim (t:0.50mm)<br>UR            | <a href="#">Buy now</a> |
| 34  | <a href="#">9020117682</a><br>Washer, plate (2k7)              | <a href="#">Buy now</a> |
| 35  | <a href="#">6834561100</a><br>Shaft propeller                  | <a href="#">Buy now</a> |
| 36  | <a href="#">6504563500</a><br>Plunger, shift                   | <a href="#">Buy now</a> |
| 37  | <a href="#">6824563100</a><br>Clutch, dog                      | <a href="#">Buy now</a> |

## Lower Casing & Drive 1



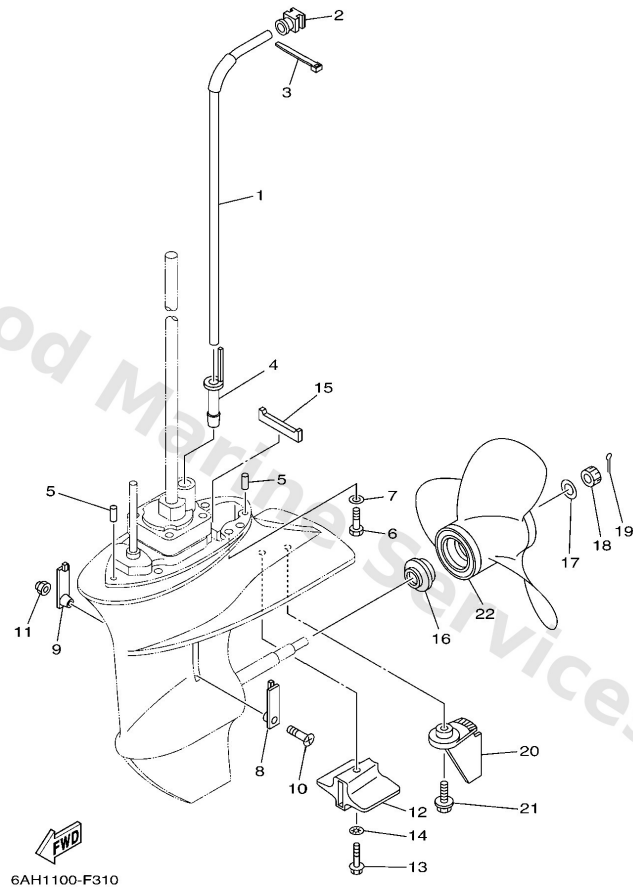
| Ref | Part   |                         |
|-----|--|-------------------------|
| 38  | <a href="#">9025005010</a><br>Pin straight 648456320000    | <a href="#">Buy now</a> |
| 39  | <a href="#">6484563300</a><br>Ring, cross pin              | <a href="#">Buy now</a> |
| 40  | <a href="#">90501150A0</a><br>Spring, compression          | <a href="#">Buy now</a> |
| 41  | <a href="#">68345361024D</a><br>Cap, lower casing          | <a href="#">Buy now</a> |
| 42  | <a href="#">9330600501</a><br>Bearing(1ff)                 | <a href="#">Buy now</a> |
| 43  | <a href="#">93315317U2</a><br>Brg,cyl-cal roller 14g (683) | <a href="#">Buy now</a> |
| 44  | <a href="#">9310117054</a><br>Oil seal (17x30x6-650)       | <a href="#">Buy now</a> |
| 45  | <a href="#">9321057M09</a><br>O-ring (683)                 | <a href="#">Buy now</a> |
| 46  | <a href="#">9321056M80</a><br>O-ring(6j8)                  | <a href="#">Buy now</a> |
| 47  | <a href="#">9707506020</a><br>Bolt(7u8)                    | <a href="#">Buy now</a> |
| 48  | <a href="#">9299506600</a><br>Washer, plain (646)          | <a href="#">Buy now</a> |
| 49  | <a href="#">6644556701</a><br>Shim (t:0.10mm)<br>UR        | <a href="#">Buy now</a> |
| 49  | <a href="#">6644556710</a><br>Shim (t:0.12mm)<br>UR        | <a href="#">Buy now</a> |
| 49  | <a href="#">6644556720</a><br>Shim (t:0.15mm)<br>UR        | <a href="#">Buy now</a> |
| 49  | <a href="#">6644556730</a><br>Shim (t:0.18mm)<br>UR        | <a href="#">Buy now</a> |

# Lower Casing & Drive 1



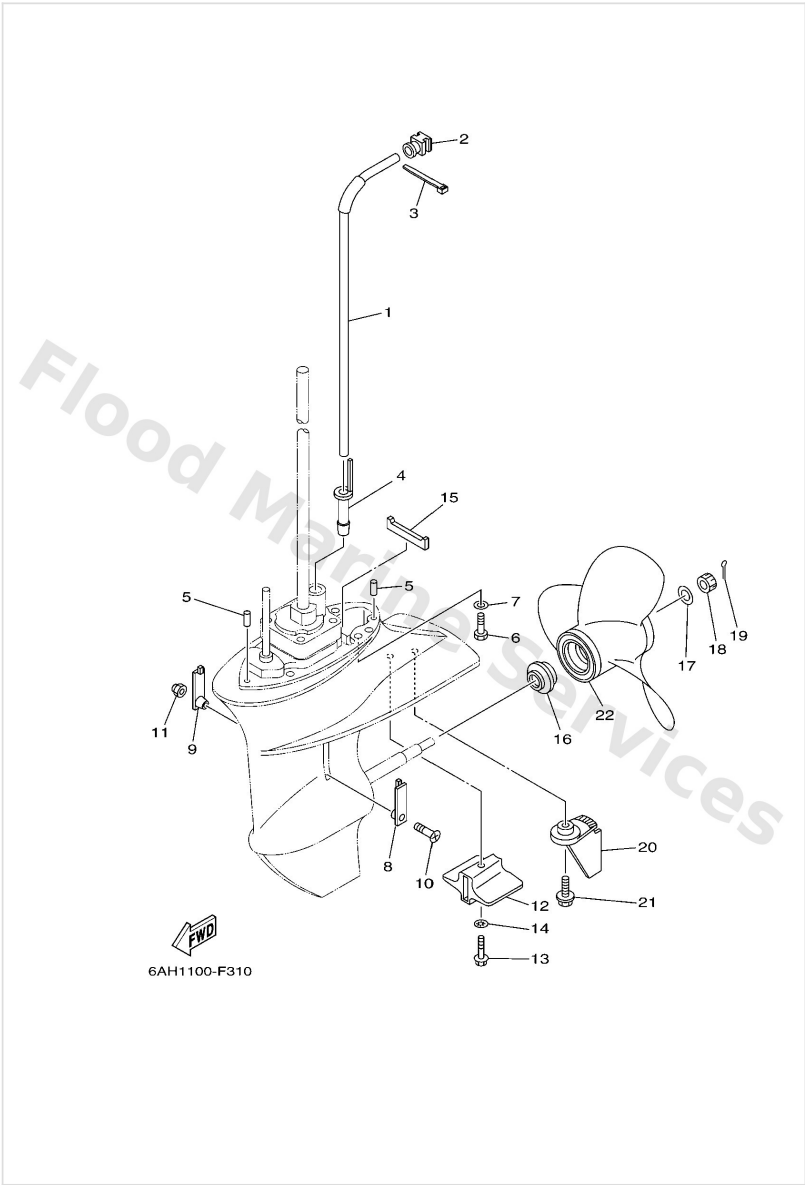
| Ref | Part  |                         |
|-----|---|-------------------------|
| 49  | <a href="#">6644556740</a><br>Shim (t:0.30mm)<br>UR | <a href="#">Buy now</a> |
| 49  | <a href="#">6644556750</a><br>Shim (t:0.40mm)<br>UR | <a href="#">Buy now</a> |
| 49  | <a href="#">6644556760</a><br>Shim (t:0.50mm)<br>UR | <a href="#">Buy now</a> |

## Lower Casing & Drive 2



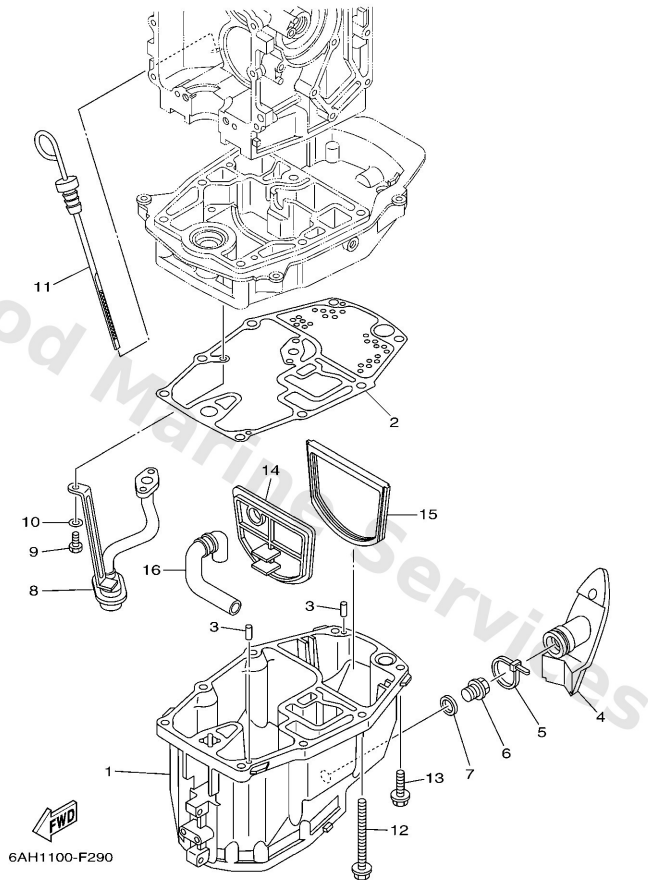
| Ref | Part  |                         |
|-----|---|-------------------------|
| 1   | <a href="#">6AH4436100</a><br>Tube, water 1<br>S(17.1") | <a href="#">Buy now</a> |
| 1   | <a href="#">6AH4436110</a><br>Tube, water 1<br>L(22.1") | <a href="#">Buy now</a> |
| 2   | <a href="#">6AH4436500</a><br>Damper, water seal 1      | <a href="#">Buy now</a> |
| 3   | <a href="#">9046511M10</a><br>Clamp                     | <a href="#">Buy now</a> |
| 4   | <a href="#">6AH4436800</a><br>Rubber, water seal 4      | <a href="#">Buy now</a> |
| 5   | <a href="#">9360412M07</a><br>Pin, dowel (688)          | <a href="#">Buy now</a> |
| 6   | <a href="#">9707508030</a><br>Bolt, hexagon (fj1)       | <a href="#">Buy now</a> |
| 7   | <a href="#">9299508600</a><br>Washer, plain (663)       | <a href="#">Buy now</a> |
| 8   | <a href="#">6G14521400</a><br>Cover, water inlet        | <a href="#">Buy now</a> |
| 9   | <a href="#">63V4521500</a><br>Cover, water inlet        | <a href="#">Buy now</a> |
| 10  | <a href="#">9015205M04</a><br>Screw, countersunk        | <a href="#">Buy now</a> |
| 11  | <a href="#">9018505002</a><br>Nut nylon (sus)(ex4)      | <a href="#">Buy now</a> |
| 12  | <a href="#">6AH4525100</a><br>Anode                     | <a href="#">Buy now</a> |
| 13  | <a href="#">9589506035</a><br>Bolt, flange(4nx)         | <a href="#">Buy now</a> |
| 14  | <a href="#">9299006300</a><br>Washer, tooth             | <a href="#">Buy now</a> |

## Lower Casing & Drive 2



| Ref | Part   |                         |
|-----|--|-------------------------|
| 15  | <a href="#">63V4537500</a><br>Damper, seal                           | <a href="#">Buy now</a> |
| 16  | <a href="#">6E74598701</a><br>Spacer                                 | <a href="#">Buy now</a> |
| 17  | <a href="#">9020110M01</a><br>Washer, plate(6m7)                     | <a href="#">Buy now</a> |
| 18  | <a href="#">9017110M01</a><br>Nut castle (683)                       | <a href="#">Buy now</a> |
| 19  | <a href="#">9149030020</a><br>Pin cotter                             | <a href="#">Buy now</a> |
| 20  | <a href="#">6AH45371004D</a><br>Tab-trim                             | <a href="#">Buy now</a> |
| 21  | <a href="#">9011906M88</a><br>Bolt, with washer                      | <a href="#">Buy now</a> |
| 22  | <a href="#">63V4594110EL</a><br>Propeller (3x9-1/4 x12 -j1)<br>UR    | <a href="#">Buy now</a> |
| 22  | <a href="#">63V4594310EL</a><br>Propeller (3x9-1/4 x11 -j1)<br>UR    | <a href="#">Buy now</a> |
| 22  | <a href="#">63V4594510EL</a><br>Propeller (3x9-1/4 x9 -j1)<br>UR     | <a href="#">Buy now</a> |
| 22  | <a href="#">63V4595210EL</a><br>Propeller (3x9-1/4 x10 -j1)<br>UR    | <a href="#">Buy now</a> |
| 22  | <a href="#">6834594100EL</a><br>Propeller (3x9-1/4"x12"-j)<br>UR     | <a href="#">Buy now</a> |
| 22  | <a href="#">6834594300EL</a><br>Propeller (3x9-1/4"x10-1/2"-j)<br>UR | <a href="#">Buy now</a> |
| 22  | <a href="#">6834595200EL</a><br>Propeller (3X9-1/4"x9-3/4"-j)<br>UR  | <a href="#">Buy now</a> |

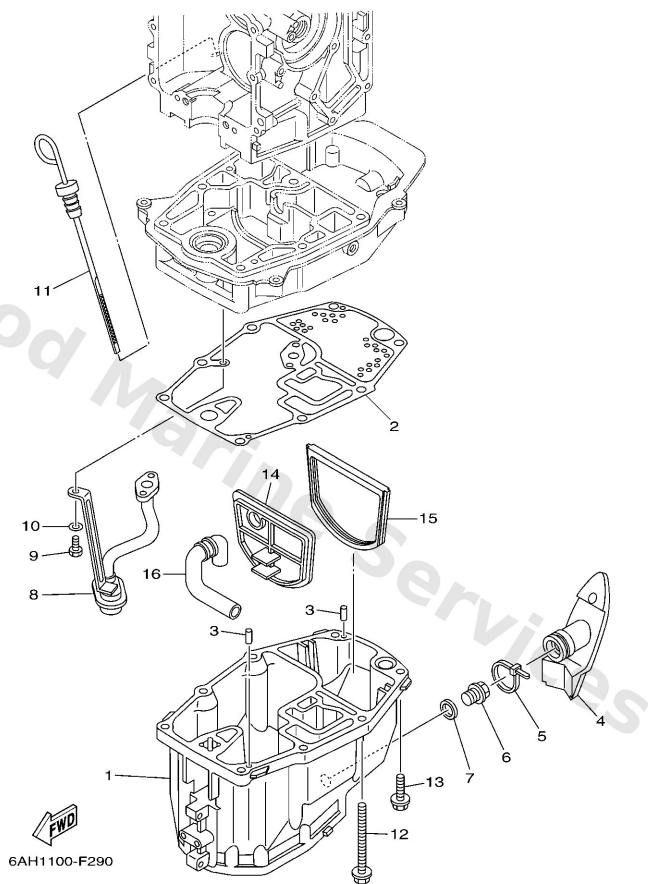
# Oil Pan



| Ref | Part  |                         |
|-----|---|-------------------------|
| 1   | <a href="#">6AH15311005B</a><br>Oil pan                 | <a href="#">Buy now</a> |
| 2   | <a href="#">6AH1531200</a><br>Gasket, oil pan           | <a href="#">Buy now</a> |
| 3   | <a href="#">9360412M07</a><br>Pin, dowel (688)          | <a href="#">Buy now</a> |
| 4   | <a href="#">6AH1531600</a><br>Damper, engine mount 1    | <a href="#">Buy now</a> |
| 5   | <a href="#">9046511M59</a><br>Clamp(63m)                | <a href="#">Buy now</a> |
| 6   | <a href="#">9034014M06</a><br>Plug, straight screw(62y) | <a href="#">Buy now</a> |
| 7   | <a href="#">9043014M09</a><br>Gasket                    | <a href="#">Buy now</a> |
| 8   | <a href="#">6AH1341100</a><br>Strainer, oil             | <a href="#">Buy now</a> |
| 9   | <a href="#">9701306016</a><br>Bolt, hexagon deep recess | <a href="#">Buy now</a> |
| 10  | <a href="#">9290306600</a><br>Washer, plain (646)       | <a href="#">Buy now</a> |
| 11  | <a href="#">6AH1536200</a><br>Plug, oil level           | <a href="#">Buy now</a> |
| 12  | <a href="#">9011908103</a><br>Bolt, with washer         | <a href="#">Buy now</a> |
| 13  | <a href="#">9011908102</a><br>Bolt, with washer         | <a href="#">Buy now</a> |
| 14  | <a href="#">6AH4512600</a><br>Plate, seal damper        | <a href="#">Buy now</a> |
| 15  | <a href="#">6AH4511500</a><br>Gasket, upper casing      | <a href="#">Buy now</a> |

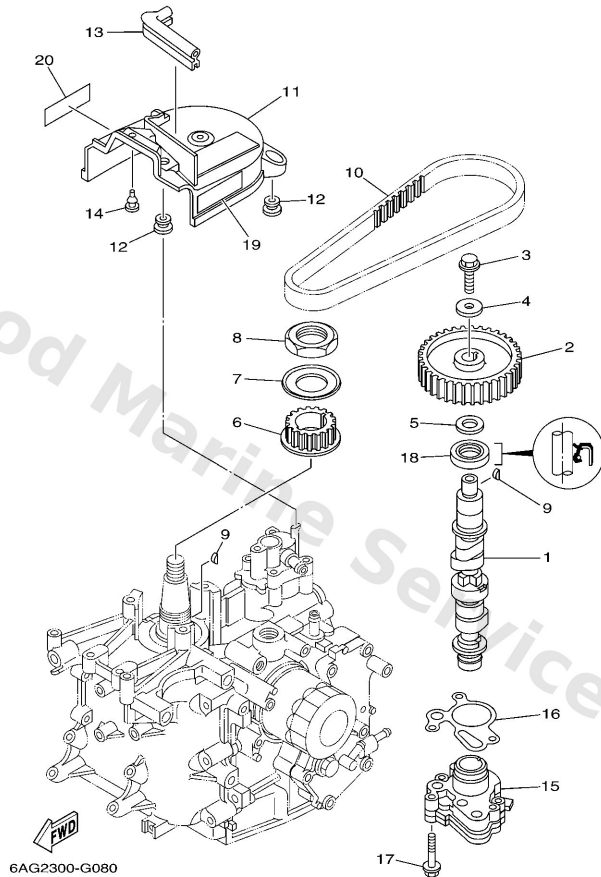


## Oil Pan



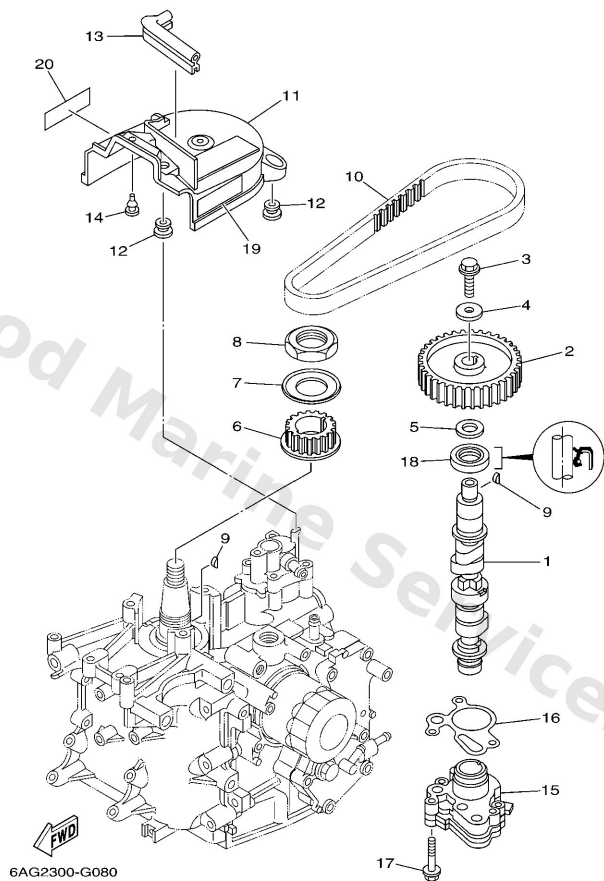
| Ref | Part                               |                         |
|-----|------------------------------------|-------------------------|
| 16  | <a href="#">6AH4513500</a><br>Pipe | <a href="#">Buy now</a> |

# Oil Pump



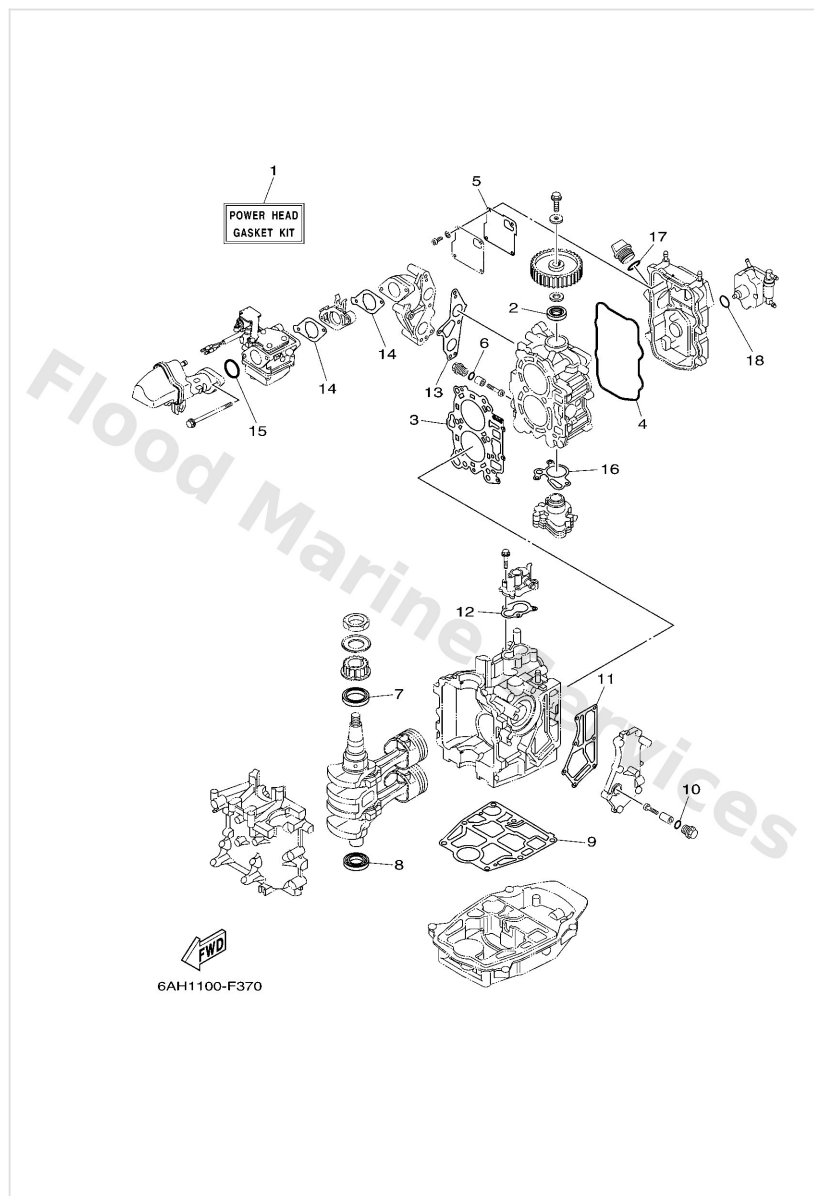
| Ref | Part  |                         |
|-----|---|-------------------------|
| 1   | <a href="#">6AG1217000</a><br>Camshaft assembly 1       | <a href="#">Buy now</a> |
| 2   | <a href="#">6AH115370094</a><br>Gear, driven            | <a href="#">Buy now</a> |
| 3   | <a href="#">90105081A7</a><br>Bolt, washer based(jn9)   | <a href="#">Buy now</a> |
| 4   | <a href="#">9020108784</a><br>Washer, plate (3I7)       | <a href="#">Buy now</a> |
| 5   | <a href="#">9020115423</a><br>Washer, plate(663)        | <a href="#">Buy now</a> |
| 6   | <a href="#">6AH1153600</a><br>Gear, drive               | <a href="#">Buy now</a> |
| 7   | <a href="#">6AH1155700</a><br>Washer 1                  | <a href="#">Buy now</a> |
| 8   | <a href="#">9017030003</a><br>Nut                       | <a href="#">Buy now</a> |
| 9   | <a href="#">9028003M01</a><br>Key woodruff 146115450000 | <a href="#">Buy now</a> |
| 10  | <a href="#">6AH4624100</a><br>Belt                      | <a href="#">Buy now</a> |
| 11  | <a href="#">6AH4629700</a><br>Cover, dust               | <a href="#">Buy now</a> |
| 12  | <a href="#">9048010627</a><br>Grommet                   | <a href="#">Buy now</a> |
| 13  | <a href="#">6AH4261700</a><br>Damper, form              | <a href="#">Buy now</a> |
| 14  | <a href="#">9048006M19</a><br>Grommet (6e3)             | <a href="#">Buy now</a> |
| 15  | <a href="#">6AH1330000</a><br>Oil pump assembly         | <a href="#">Buy now</a> |

# Oil Pump



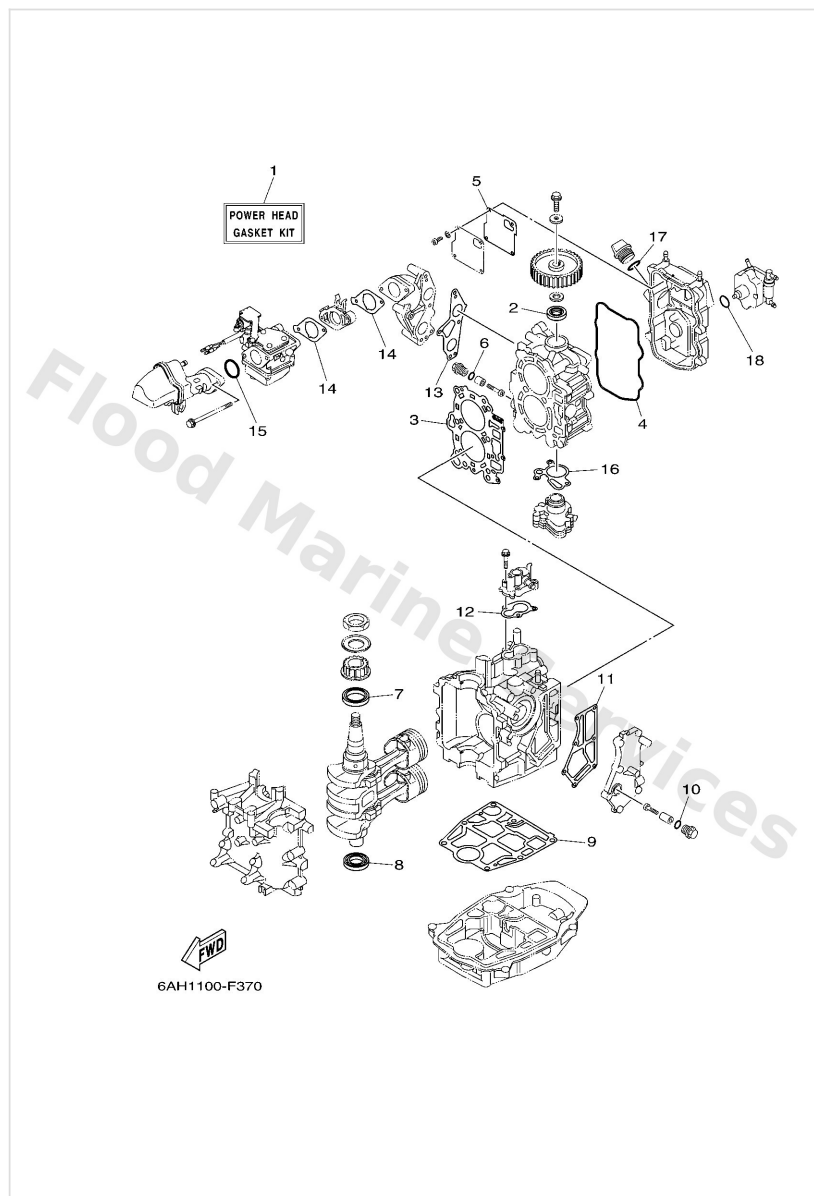
| Ref | Part   |                         |
|-----|--|-------------------------|
| 16  | <a href="#">6AH1332900</a><br>Gasket, pump cover | <a href="#">Buy now</a> |
| 17  | <a href="#">9010506035</a><br>Bolt, flange       | <a href="#">Buy now</a> |
| 18  | <a href="#">9310222009</a><br>Oil seal           | <a href="#">Buy now</a> |
| 19  | <a href="#">6AH8199440</a><br>Label, safety      | <a href="#">Buy now</a> |
| 20  | <a href="#">6AH8199450</a><br>Label, safety      | <a href="#">Buy now</a> |

# Repair Kit 1



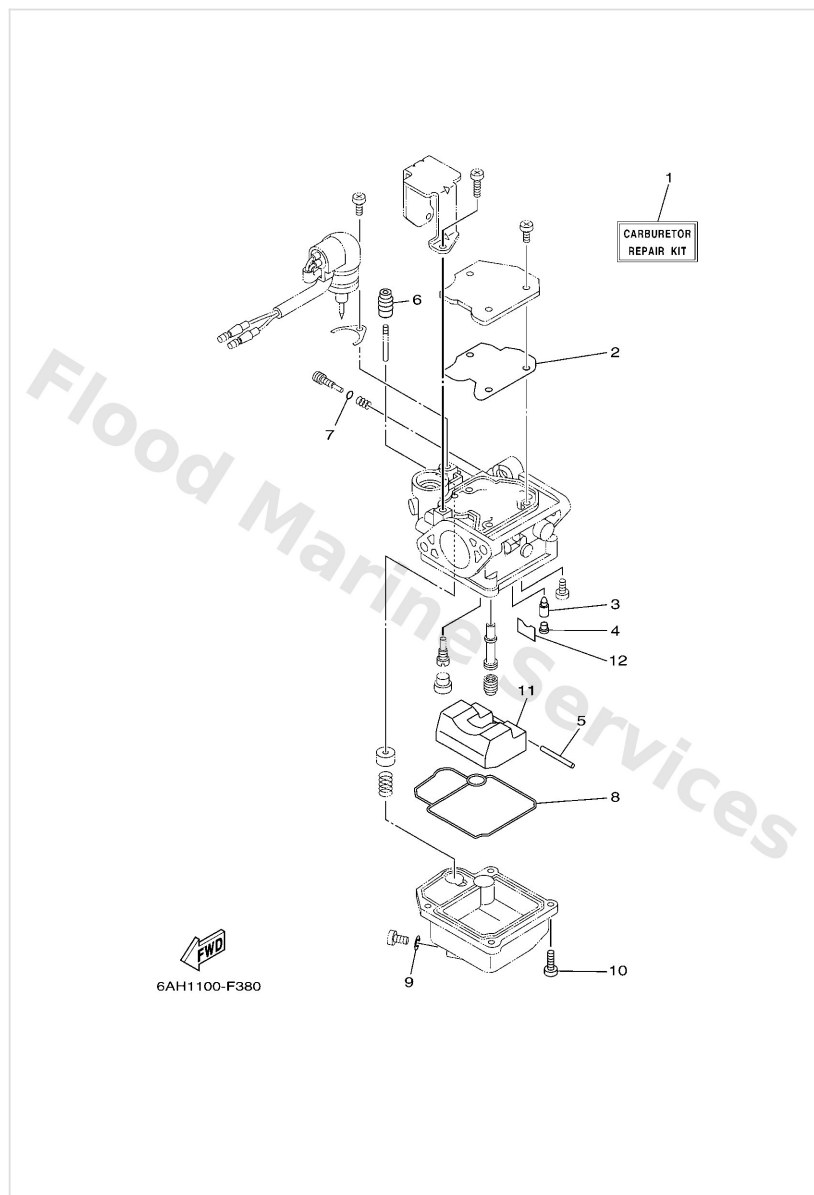
| Ref | Part  |                         |
|-----|---|-------------------------|
| 1   | <a href="#">6AGW000100</a><br>Power head gasket kit       | <a href="#">Buy now</a> |
| 2   | <a href="#">9310222009</a><br>Oil seal                    | <a href="#">Buy now</a> |
| 3   | <a href="#">6AG1118100</a><br>Gasket, cylinder head 1     | <a href="#">Buy now</a> |
| 4   | <a href="#">6AH1135600</a><br>Seal, cylinder 2            | <a href="#">Buy now</a> |
| 5   | <a href="#">6AH1116900</a><br>Gasket, breather cover      | <a href="#">Buy now</a> |
| 6   | <a href="#">9321013M63</a><br>O-ring (6g8)                | <a href="#">Buy now</a> |
| 7   | <a href="#">9310237004</a><br>Oil seal                    | <a href="#">Buy now</a> |
| 8   | <a href="#">9310225014</a><br>Oil seal                    | <a href="#">Buy now</a> |
| 9   | <a href="#">6AH1135100</a><br>Gasket, cylinder            | <a href="#">Buy now</a> |
| 11  | <a href="#">6AH4111400</a><br>Gasket, exhaust outer cover | <a href="#">Buy now</a> |
| 12  | <a href="#">6AH1241400</a><br>Gasket, cover               | <a href="#">Buy now</a> |
| 13  | <a href="#">6AH1364500</a><br>Gasket, manifold 1          | <a href="#">Buy now</a> |
| 14  | <a href="#">6AH1364600</a><br>Gasket, manifold 2          | <a href="#">Buy now</a> |
| 15  | <a href="#">9321035M86</a><br>O-ring(6l2)                 | <a href="#">Buy now</a> |
| 16  | <a href="#">6AH1332900</a><br>Gasket, pump cover          | <a href="#">Buy now</a> |

# Repair Kit 1



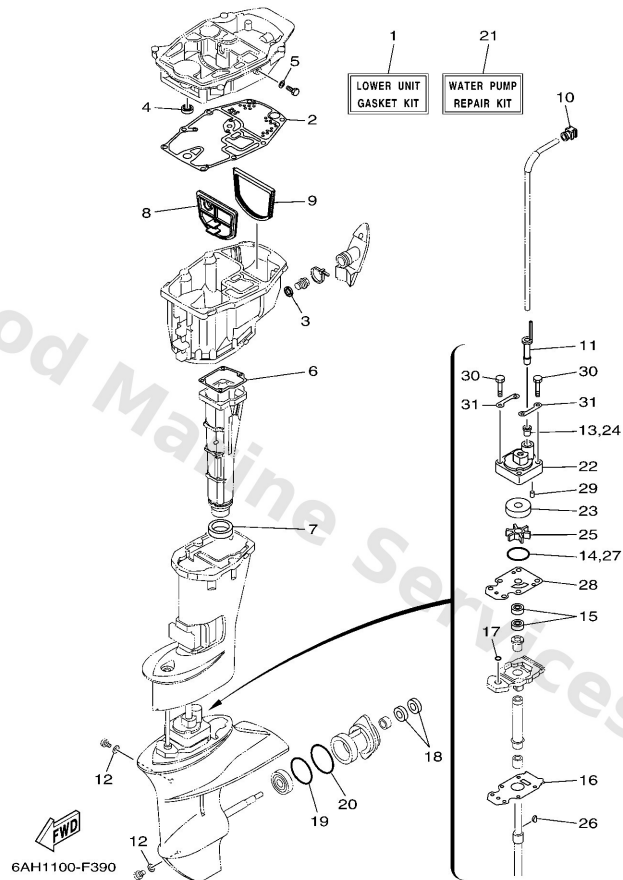
| Ref | Part                                 |                         |
|-----|--------------------------------------|-------------------------|
| 17  | <a href="#">9321024M79</a><br>O-ring | <a href="#">Buy now</a> |
| 18  | <a href="#">9321020M65</a><br>O-ring | <a href="#">Buy now</a> |

## Repair Kit 2



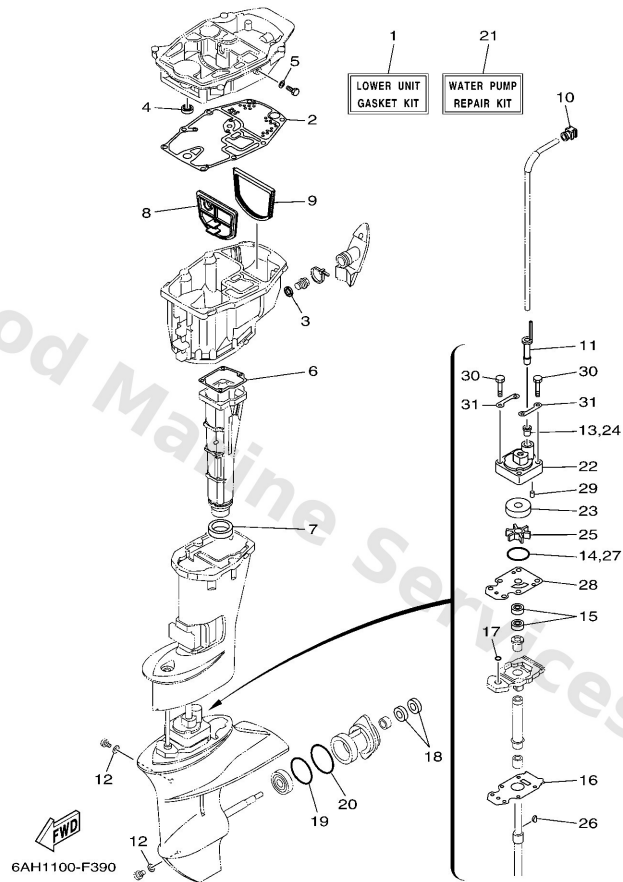
| Ref | Part  |                         |
|-----|---|-------------------------|
| 1   | <a href="#">6AHW009300</a><br>Carburetor repair kit | <a href="#">Buy now</a> |
| 2   | <a href="#">65W1412610</a><br>Gasket                | <a href="#">Buy now</a> |
| 3   | <a href="#">6G11454601</a><br>Valve, needle         | <a href="#">Buy now</a> |
| 4   | <a href="#">6761418600</a><br>Pin, valve            | <a href="#">Buy now</a> |
| 5   | <a href="#">6H41454800</a><br>Pin, float arm        | <a href="#">Buy now</a> |
| 6   | <a href="#">65W1437301</a><br>Cover, plunger cap    | <a href="#">Buy now</a> |
| 7   | <a href="#">67C1439700</a><br>O-ring                | <a href="#">Buy now</a> |
| 8   | <a href="#">6AH1438400</a><br>Gasket, float chamber | <a href="#">Buy now</a> |
| 9   | <a href="#">65W1439800</a><br>Washer                | <a href="#">Buy now</a> |
| 10  | <a href="#">9798004114</a><br>Screw, pan head(ga5)  | <a href="#">Buy now</a> |
| 11  | <a href="#">6AH1498500</a><br>Float                 | <a href="#">Buy now</a> |
| 12  | <a href="#">6631415900</a><br>Clip                  | <a href="#">Buy now</a> |

## Repair Kit 3



| Ref | Part   |                         |
|-----|--|-------------------------|
| 1   | <a href="#">6AHW000120</a><br>Lower unit gasket kit    | <a href="#">Buy now</a> |
| 2   | <a href="#">6AH1531200</a><br>Gasket, oil pan          | <a href="#">Buy now</a> |
| 3   | <a href="#">9043014M09</a><br>Gasket                   | <a href="#">Buy now</a> |
| 4   | <a href="#">9310112M63</a><br>Oil seal                 | <a href="#">Buy now</a> |
| 5   | <a href="#">9043008143</a><br>Gasket (256-11198-00)    | <a href="#">Buy now</a> |
| 6   | <a href="#">6AH4113400</a><br>Gasket, exhaust manifold | <a href="#">Buy now</a> |
| 7   | <a href="#">6AH4113800</a><br>Seal, ext. 1             | <a href="#">Buy now</a> |
| 8   | <a href="#">6AH4512600</a><br>Plate, seal damper       | <a href="#">Buy now</a> |
| 9   | <a href="#">6AH4511500</a><br>Gasket, upper casing     | <a href="#">Buy now</a> |
| 10  | <a href="#">6AH4436500</a><br>Damper, water seal 1     | <a href="#">Buy now</a> |
| 11  | <a href="#">6AH4436800</a><br>Rubber, water seal 4     | <a href="#">Buy now</a> |
| 12  | <a href="#">9043008020</a><br>Gasket                   | <a href="#">Buy now</a> |
| 13  | <a href="#">6L24436700</a><br>Damper, water seal 3     | <a href="#">Buy now</a> |
| 14  | <a href="#">9321049046</a><br>O-ring (620)             | <a href="#">Buy now</a> |
| 15  | <a href="#">9310120001</a><br>Oil seal                 | <a href="#">Buy now</a> |

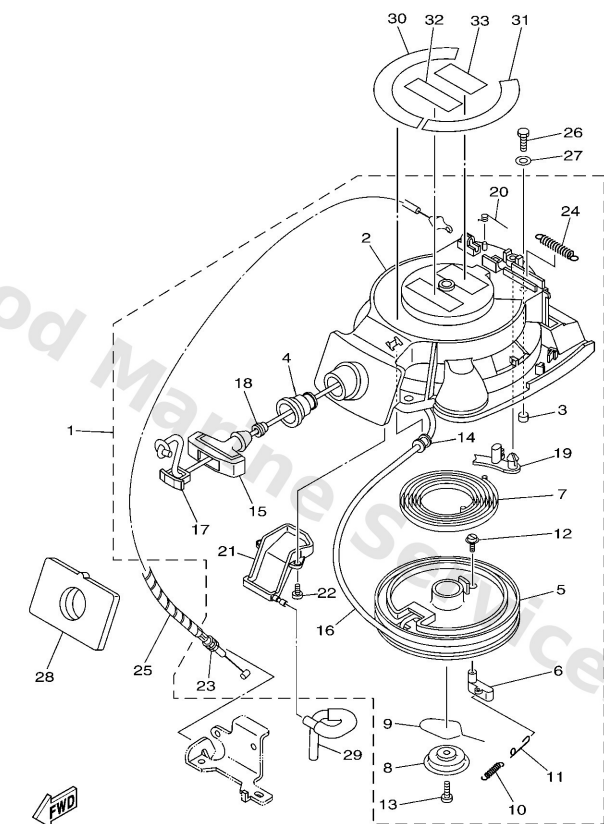
## Repair Kit 3



| Ref | Part   |                         |
|-----|--|-------------------------|
| 16  | <a href="#">69G45315A0</a><br>Packing, lower casing  | <a href="#">Buy now</a> |
| 17  | <a href="#">9321006ME6</a><br>O-ring                 | <a href="#">Buy now</a> |
| 18  | <a href="#">9310117054</a><br>Oil seal (17x30x6-650) | <a href="#">Buy now</a> |
| 19  | <a href="#">9321057M09</a><br>O-ring (683)           | <a href="#">Buy now</a> |
| 20  | <a href="#">9321056M80</a><br>O-ring(6j8)            | <a href="#">Buy now</a> |
| 21  | <a href="#">6AHW007800</a><br>Water pump repair kit  | <a href="#">Buy now</a> |
| 22  | <a href="#">6AH4431100</a><br>Housing, water pump    | <a href="#">Buy now</a> |
| 23  | <a href="#">63V4432200</a><br>Insert, cartridge      | <a href="#">Buy now</a> |
| 25  | <a href="#">63V4435201</a><br>Impeller               | <a href="#">Buy now</a> |
| 26  | <a href="#">6644433800</a><br>Key, woodruff          | <a href="#">Buy now</a> |
| 28  | <a href="#">68T4432300</a><br>Outer plate, cartridge | <a href="#">Buy now</a> |
| 29  | <a href="#">9360412M07</a><br>Pin, dowel (688)       | <a href="#">Buy now</a> |
| 30  | <a href="#">9708008045</a><br>Bolt, hexagon          | <a href="#">Buy now</a> |
| 31  | <a href="#">63V4432800</a><br>Plate                  | <a href="#">Buy now</a> |



# Starter



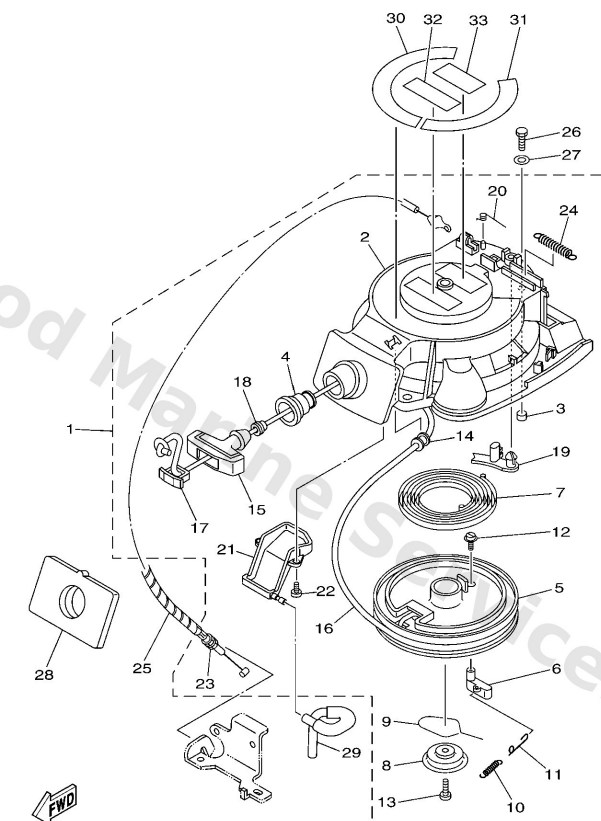
6CA1300-H100

\*1: CUT FROM 50M ROLLS, PART NO. 90890-44373, CUTTING LENGTH 1.8M

\*1: A PRELEVER SUR BOBINE 50M, REFERENCE 90890-44373, LONGUEUR DE COUPE 1.8M

| Ref | Part   |                         |
|-----|--|-------------------------|
| 1   | <a href="#">6AH1571001</a><br>Starter assembly   | <a href="#">Buy now</a> |
| 2   | <a href="#">6AH1571100</a><br>Case, starter      | <a href="#">Buy now</a> |
| 3   | <a href="#">67D1576400</a><br>Collar 1           | <a href="#">Buy now</a> |
| 4   | <a href="#">6AH1579500</a><br>Guide, rope        | <a href="#">Buy now</a> |
| 5   | <a href="#">63V1571400</a><br>Drum, sheave       | <a href="#">Buy now</a> |
| 6   | <a href="#">63V1574110</a><br>Pawl, drive        | <a href="#">Buy now</a> |
| 7   | <a href="#">63V1571300</a><br>Spring, starter    | <a href="#">Buy now</a> |
| 8   | <a href="#">68T1571600</a><br>Plate, drive       | <a href="#">Buy now</a> |
| 9   | <a href="#">63V1570501</a><br>Spring, drive pawl | <a href="#">Buy now</a> |
| 10  | <a href="#">63V1576701</a><br>Spring             | <a href="#">Buy now</a> |
| 11  | <a href="#">68T1578400</a><br>Spring, return     | <a href="#">Buy now</a> |
| 12  | <a href="#">6AJ1579300</a><br>Screw              | <a href="#">Buy now</a> |
| 13  | <a href="#">68T1579300</a><br>Screw              | <a href="#">Buy now</a> |
| 14  | <a href="#">68T1576400</a><br>Collar 1           | <a href="#">Buy now</a> |
| 15  | <a href="#">6891575501</a><br>Handle, starter    | <a href="#">Buy now</a> |

# Starter



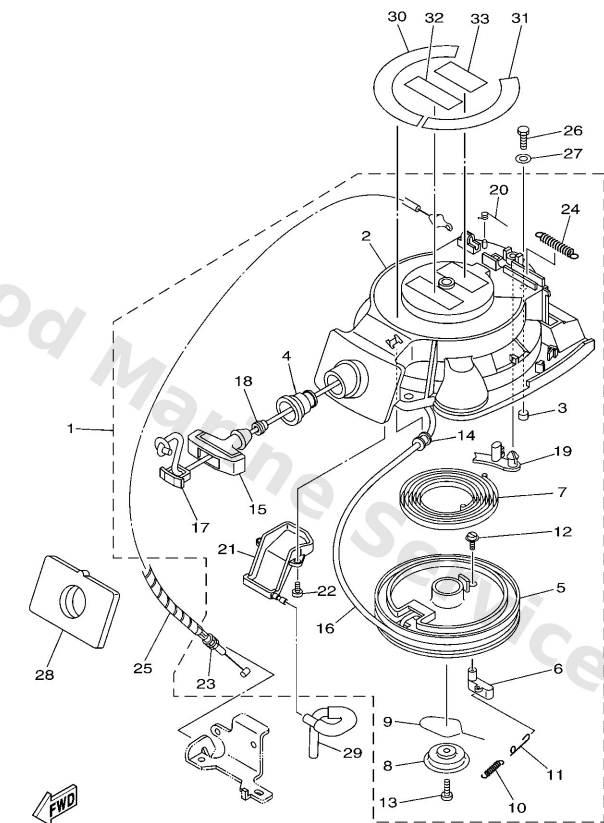
6CA1300-H100

\*1: CUT FROM 50M ROLLS, PART NO. 90890-44373, CUTTING LENGTH 1.8M

\*1: A PRELEVER SUR BOBINE 50M, REFERENCE 90890-44373, LONGUEUR DE COUPE 1.8M

| Ref | Part  |                         |
|-----|---|-------------------------|
| 16  | <a href="#">*<br/>item_description<br/>*1</a>           | <a href="#">Buy now</a> |
| 17  | <a href="#">6F51577902</a><br>Cover                     | <a href="#">Buy now</a> |
| 18  | <a href="#">6A01578900</a><br>Damper                    | <a href="#">Buy now</a> |
| 19  | <a href="#">66T1579400</a><br>Stopper                   | <a href="#">Buy now</a> |
| 20  | <a href="#">66T1573400</a><br>Spring, return            | <a href="#">Buy now</a> |
| 21  | <a href="#">6AH1578200</a><br>Cover, sheave             | <a href="#">Buy now</a> |
| 22  | <a href="#">6AH1579300</a><br>Screw                     | <a href="#">Buy now</a> |
| 23  | <a href="#">6AH1577000</a><br>Cable comp., starter stop | <a href="#">Buy now</a> |
| 24  | <a href="#">66T1573100</a><br>Retainer, spring          | <a href="#">Buy now</a> |
| 25  | <a href="#">9044606M90</a><br>Hose                      | <a href="#">Buy now</a> |
| 26  | <a href="#">9709506020</a><br>Bolt(7u8)                 | <a href="#">Buy now</a> |
| 27  | <a href="#">9299506600</a><br>Washer, plain (646)       | <a href="#">Buy now</a> |
| 28  | <a href="#">6AH1576200</a><br>Seal, rubber 2            | <a href="#">Buy now</a> |
| 29  | <a href="#">6AH2431600</a><br>Pipe 6                    | <a href="#">Buy now</a> |
| 30  | <a href="#">6AH1442760</a><br>Label, instruction        | <a href="#">Buy now</a> |

# Starter



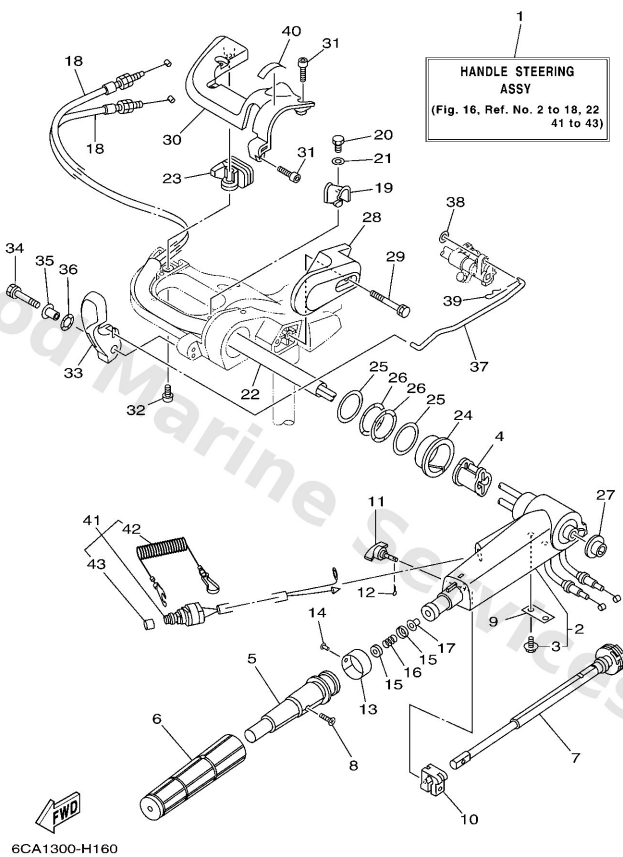
6CA1300-H100

\*1: CUT FROM 50M ROLLS, PART NO. 90890-44373, CUTTING LENGTH 1.8M

\*1: A PRELEVER SUR BOBINE 50M, REFERENCE 90890-44373, LONGUEUR DE COUPE 1.8M

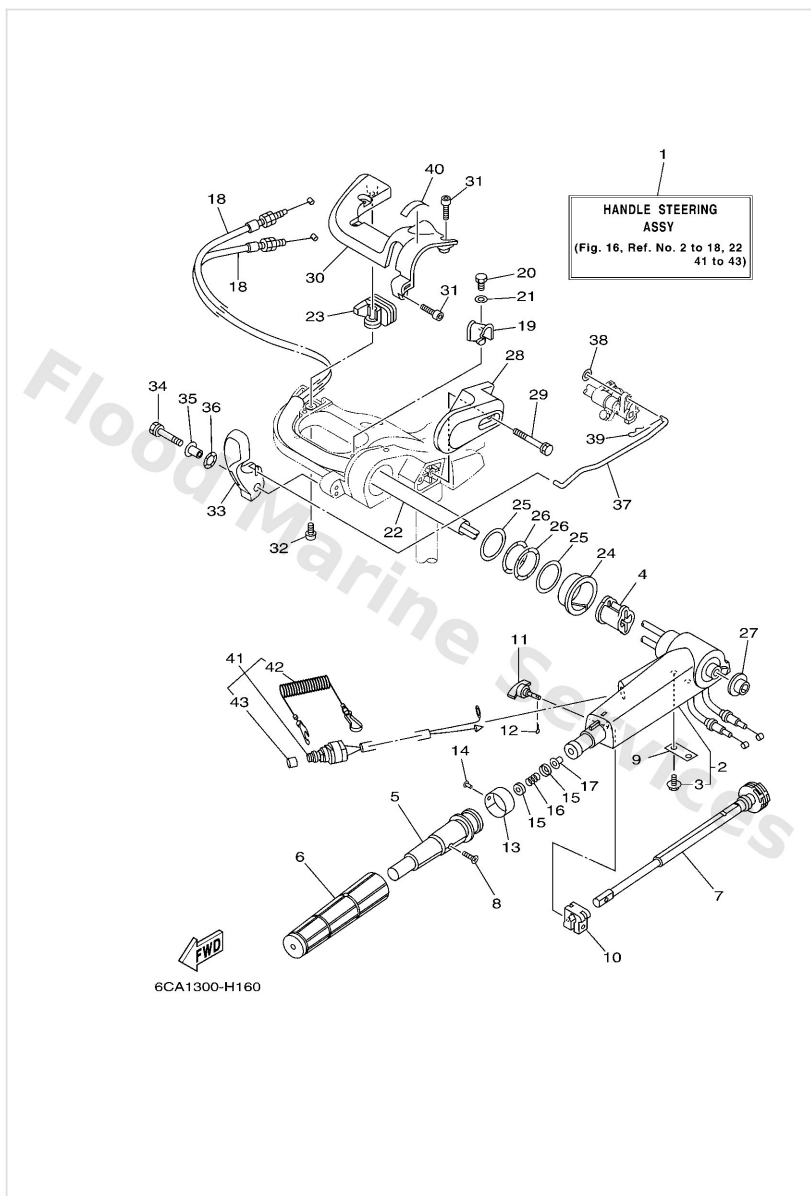
| Ref | Part   |                         |
|-----|--|-------------------------|
| 31  | <a href="#">6AH1343760</a><br>Mark, caution  | <a href="#">Buy now</a> |
| 32  | <a href="#">6AH8199540</a><br>Label, warning | <a href="#">Buy now</a> |
| 33  | <a href="#">6AH8199550</a><br>Label, warning | <a href="#">Buy now</a> |

# Steering



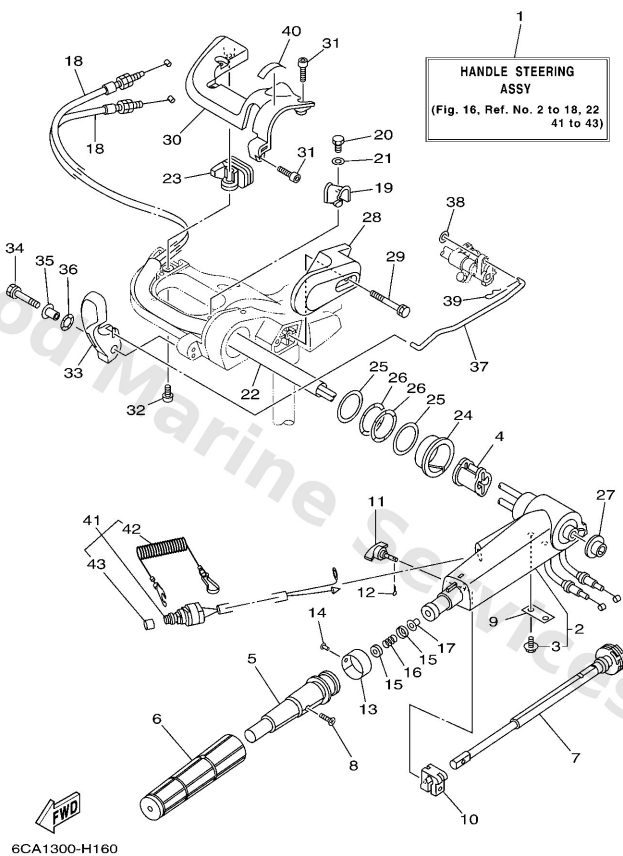
| Ref | Part   |                         |
|-----|--|-------------------------|
| 1   | <a href="#">6AHW0084014D</a><br>Handle steering assembly | <a href="#">Buy now</a> |
| 2   | <a href="#">6AH42101014D</a><br>Handle, steering         | <a href="#">Buy now</a> |
| 3   | <a href="#">9010906M86</a><br>Bolt                       | <a href="#">Buy now</a> |
| 4   | <a href="#">6AH2628800</a><br>Grommet, cable             | <a href="#">Buy now</a> |
| 5   | <a href="#">66M4211900</a><br>Grip, steering handle      | <a href="#">Buy now</a> |
| 6   | <a href="#">67D4217700</a><br>Rubber, handle             | <a href="#">Buy now</a> |
| 7   | <a href="#">65W4213800</a><br>Lever, throttle            | <a href="#">Buy now</a> |
| 8   | <a href="#">9014905M13</a><br>Screw, countersunk         | <a href="#">Buy now</a> |
| 9   | <a href="#">65W4215900</a><br>Stay                       | <a href="#">Buy now</a> |
| 10  | <a href="#">6G14212600</a><br>Piece, friction            | <a href="#">Buy now</a> |
| 11  | <a href="#">65W4212500</a><br>Bolt, friction adjusting   | <a href="#">Buy now</a> |
| 12  | <a href="#">9149016010</a><br>Pin, cotter                | <a href="#">Buy now</a> |
| 13  | <a href="#">6J04213700</a><br>Indicator, throttle        | <a href="#">Buy now</a> |
| 14  | <a href="#">9026902M09</a><br>Rivet(6I5)                 | <a href="#">Buy now</a> |
| 15  | <a href="#">6X44418800</a><br>Washer                     | <a href="#">Buy now</a> |

# Steering



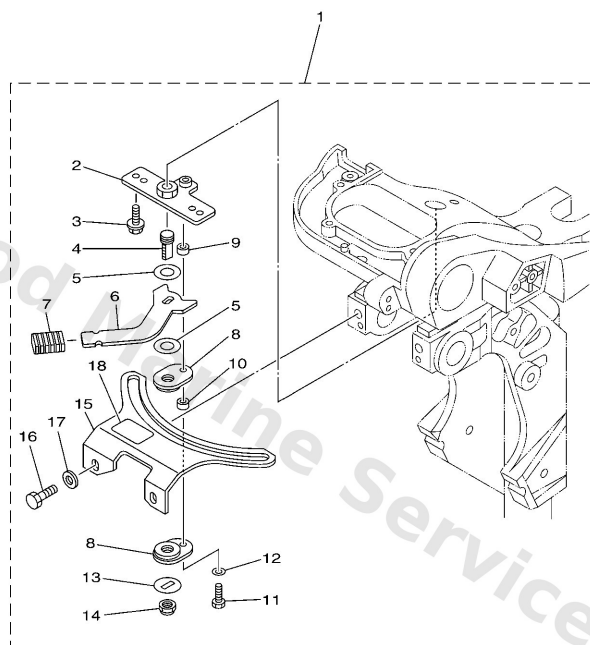
| Ref | Part  |                         |
|-----|---|-------------------------|
| 16  | <a href="#">9050123215</a><br>Spring (655)                  | <a href="#">Buy now</a> |
| 17  | <a href="#">9038608004</a><br>Bush                          | <a href="#">Buy now</a> |
| 18  | <a href="#">6AH2631100</a><br>Cable, throttle 1             | <a href="#">Buy now</a> |
| 19  | <a href="#">6AH4455400</a><br>Plate                         | <a href="#">Buy now</a> |
| 20  | <a href="#">9709506014</a><br>Bolt(gj3)                     | <a href="#">Buy now</a> |
| 21  | <a href="#">9299506600</a><br>Washer, plain (646)           | <a href="#">Buy now</a> |
| 22  | <a href="#">6AH2634E00</a><br>Protector 1                   | <a href="#">Buy now</a> |
| 23  | <a href="#">6AH4255100</a><br>Grommet                       | <a href="#">Buy now</a> |
| 24  | <a href="#">9038645001</a><br>Bush                          | <a href="#">Buy now</a> |
| 25  | <a href="#">9020139008</a><br>Washer, plate                 | <a href="#">Buy now</a> |
| 26  | <a href="#">9020639001</a><br>Washer, wave                  | <a href="#">Buy now</a> |
| 27  | <a href="#">9038120001</a><br>Bush, solid                   | <a href="#">Buy now</a> |
| 28  | <a href="#">6AH42131004D</a><br>Cover, handle steering      | <a href="#">Buy now</a> |
| 29  | <a href="#">9759506555</a><br>Bolt, hexagon w/w deep recess | <a href="#">Buy now</a> |
| 30  | <a href="#">6AH4253200</a><br>Cover                         | <a href="#">Buy now</a> |

# Steering



| Ref | Part  |                         |
|-----|---|-------------------------|
| 31  | <a href="#">9011106072</a><br>Bolt,hex. socket button     | <a href="#">Buy now</a> |
| 32  | <a href="#">9778060520</a><br>Screw, tapping(6k8)         | <a href="#">Buy now</a> |
| 33  | <a href="#">6AH4411100</a><br>Handle, gear shift          | <a href="#">Buy now</a> |
| 34  | <a href="#">9011906M05</a><br>Bolt, with washer(6l2)      | <a href="#">Buy now</a> |
| 35  | <a href="#">9038706M86</a><br>Collar                      | <a href="#">Buy now</a> |
| 36  | <a href="#">9020615M18</a><br>Washer, wave(6l2)           | <a href="#">Buy now</a> |
| 37  | <a href="#">6AH4412400</a><br>Link, shift rod             | <a href="#">Buy now</a> |
| 38  | <a href="#">9299006200</a><br>Ybs66-6 washer, plain       | <a href="#">Buy now</a> |
| 39  | <a href="#">9046818008</a><br>Clip 620436610000           | <a href="#">Buy now</a> |
| 40  | <a href="#">6G84419100</a><br>Indicator, shift            | <a href="#">Buy now</a> |
| 41  | <a href="#">6AH8257500</a><br>Engine stop switch assembly | <a href="#">Buy now</a> |
| 42  | <a href="#">6828255600</a><br>Lanyard, stop switch        | <a href="#">Buy now</a> |
| 43  | <a href="#">6898257Y00</a><br>Cap                         | <a href="#">Buy now</a> |

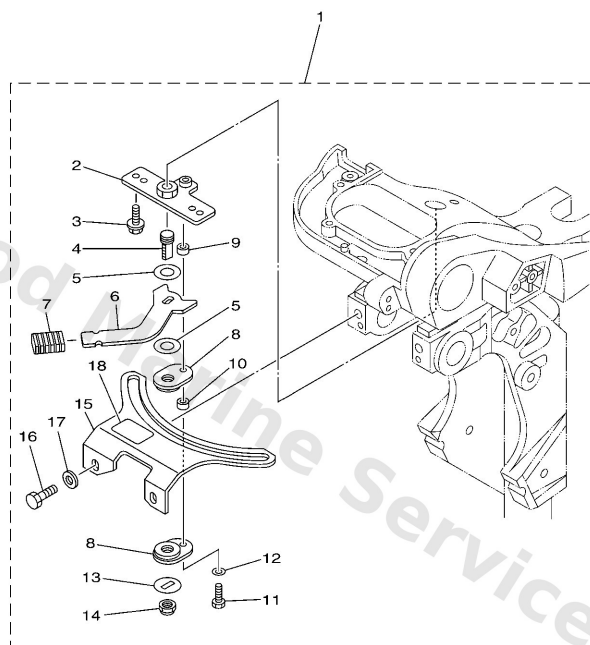
# Steering Friction



  
6AH1100-F210

| Ref | Part   |                         |
|-----|--|-------------------------|
| 1   | <a href="#">6AH4250800</a><br>Steering friction assembly | <a href="#">Buy now</a> |
| 2   | <a href="#">68T4252501</a><br>Plate, friction            | <a href="#">Buy now</a> |
| 3   | <a href="#">9011905018</a><br>Bolt, with washer          | <a href="#">Buy now</a> |
| 4   | <a href="#">67C4256200</a><br>Shaft, steering lock       | <a href="#">Buy now</a> |
| 5   | <a href="#">9020210M56</a><br>Washer, plate              | <a href="#">Buy now</a> |
| 6   | <a href="#">68T4256100</a><br>Knob, steering lock        | <a href="#">Buy now</a> |
| 7   | <a href="#">6894363300</a><br>Cover, tilt lever          | <a href="#">Buy now</a> |
| 8   | <a href="#">65W4252800</a><br>Plate, friction            | <a href="#">Buy now</a> |
| 9   | <a href="#">9038705M05</a><br>Collar                     | <a href="#">Buy now</a> |
| 10  | <a href="#">9038705M11</a><br>Collar                     | <a href="#">Buy now</a> |
| 11  | <a href="#">9709505020</a><br>Bolt, hexagon              | <a href="#">Buy now</a> |
| 12  | <a href="#">9299505600</a><br>Washer, plain (646)        | <a href="#">Buy now</a> |
| 13  | <a href="#">9020910M26</a><br>Washer                     | <a href="#">Buy now</a> |
| 14  | <a href="#">9018510M14</a><br>Nut, self-locking          | <a href="#">Buy now</a> |
| 15  | <a href="#">6AH4252700</a><br>Plate, friction            | <a href="#">Buy now</a> |

# Steering Friction

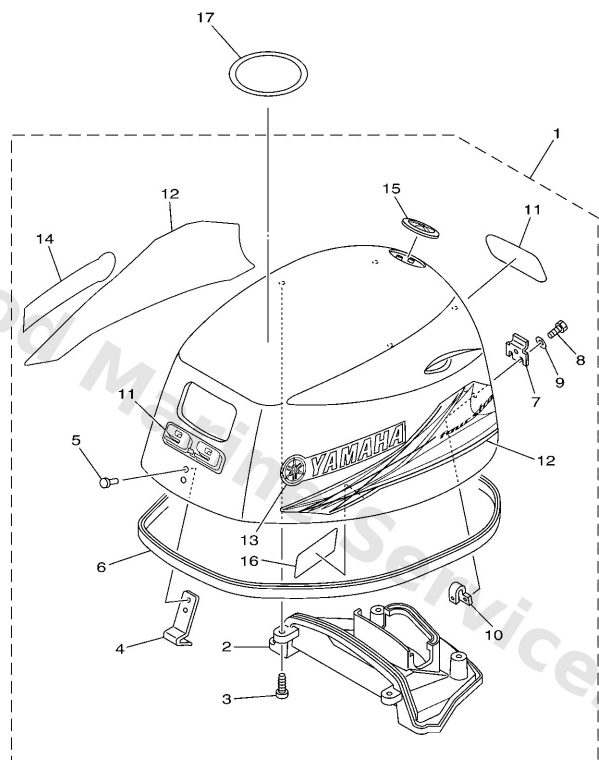


  
6AH1100-F210

| Ref | Part  |                         |
|-----|---|-------------------------|
| 16  | <a href="#">9010108022</a><br>Bolt, hexagon deep recess | <a href="#">Buy now</a> |
| 17  | <a href="#">9020108065</a><br>Washer, plate             | <a href="#">Buy now</a> |
| 18  | <a href="#">68T4315500</a><br>Mark 1                    | <a href="#">Buy now</a> |



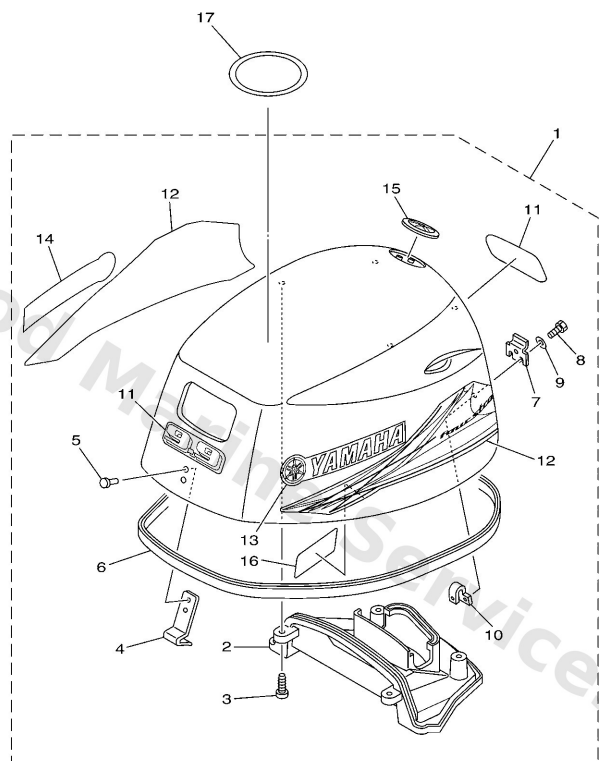
## Top Cowling



  
6CA1300-H010

| Ref | Part  |                         |
|-----|---|-------------------------|
| 1   | <a href="#">6CA42610004D</a><br>Top Cowling assembly        | <a href="#">Buy now</a> |
| 2   | <a href="#">6AH4261300</a><br>Molding, air duct             | <a href="#">Buy now</a> |
| 3   | <a href="#">9778050616</a><br>Screw, pan head tapping (ak5) | <a href="#">Buy now</a> |
| 4   | <a href="#">6AH4265100</a><br>Hook                          | <a href="#">Buy now</a> |
| 5   | <a href="#">9026606M02</a><br>Rivet (697)                   | <a href="#">Buy now</a> |
| 6   | <a href="#">6AH4261500</a><br>Seal                          | <a href="#">Buy now</a> |
| 7   | <a href="#">60R4265200</a><br>Hook                          | <a href="#">Buy now</a> |
| 8   | <a href="#">9709505014</a><br>Bolt, w/ plain                | <a href="#">Buy now</a> |
| 9   | <a href="#">9299505600</a><br>Washer, plain (646)           | <a href="#">Buy now</a> |
| 10  | <a href="#">6AH4264900</a><br>Holder, clamp band            | <a href="#">Buy now</a> |
| 11  | <a href="#">6CA4267700</a><br>Graphic, front                | <a href="#">Buy now</a> |
| 12  | <a href="#">6CAW007000</a><br>Graphic Set                   | <a href="#">Buy now</a> |
| 13  | <a href="#">6CA4268100</a><br>Mark, cowling                 | <a href="#">Buy now</a> |
| 14  | <a href="#">6CA4268200</a><br>Mark, cowling                 | <a href="#">Buy now</a> |
| 15  | <a href="#">6AH4269701</a><br>Tuning fork mark              | <a href="#">Buy now</a> |

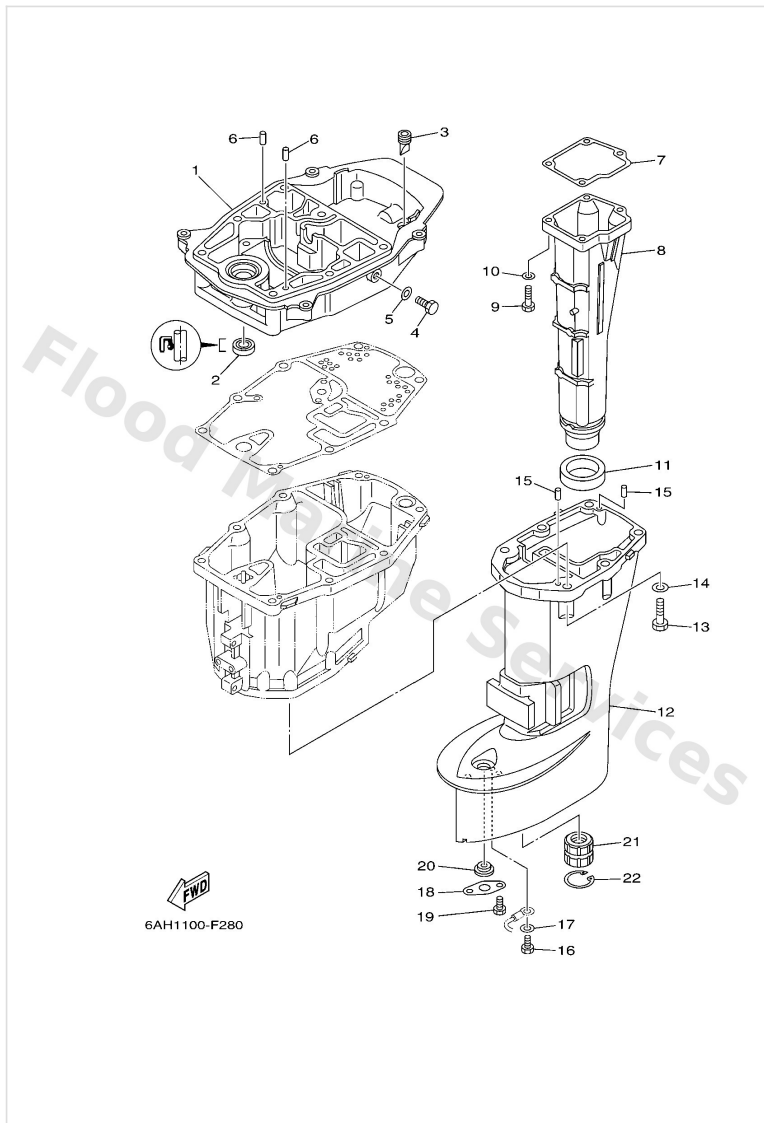
## Top Cowling



  
6CA1300-H010

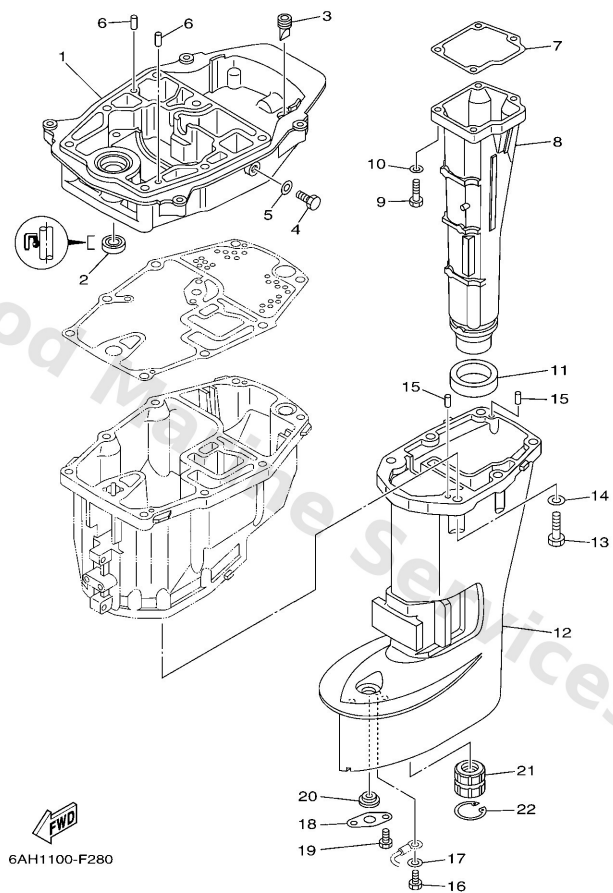
| Ref | Part                                     |                         |
|-----|--|-------------------------|
| 16  | <a href="#">6AH4273500</a><br>Protector  | <a href="#">Buy now</a> |
| 17  | <a href="#">67F1343410</a><br>○○○ , ○○○○ | <a href="#">Buy now</a> |

# Upper Casing



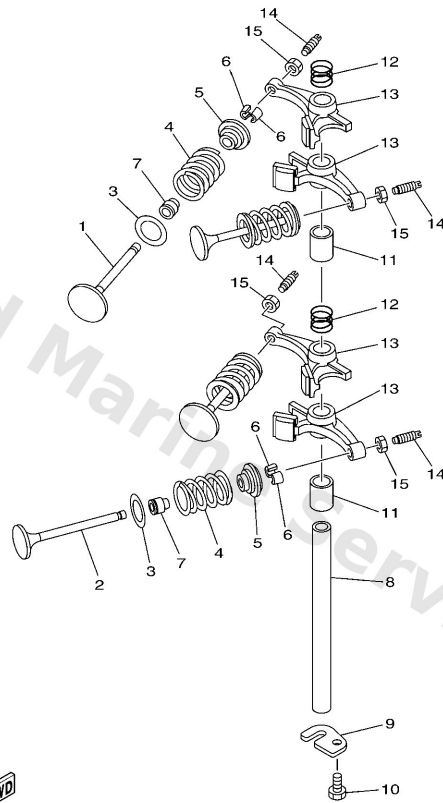
| Ref | Part  |                         |
|-----|---|-------------------------|
| 1   | <a href="#">6AH41137005B</a><br>Guide, exhaust            | <a href="#">Buy now</a> |
| 2   | <a href="#">9310112M63</a><br>Oil seal                    | <a href="#">Buy now</a> |
| 3   | <a href="#">65W4271700</a><br>Rubber, seal 2              | <a href="#">Buy now</a> |
| 4   | <a href="#">9709508014</a><br>Bolt, hexagon deep recess   | <a href="#">Buy now</a> |
| 5   | <a href="#">9043008143</a><br>Gasket (256-11198-00)       | <a href="#">Buy now</a> |
| 6   | <a href="#">9360619M23</a><br>Pin, dowel                  | <a href="#">Buy now</a> |
| 7   | <a href="#">6AH4113400</a><br>Gasket, exhaust manifold    | <a href="#">Buy now</a> |
| 8   | <a href="#">6AH14711005B</a><br>Muffler 1<br>S(17.1")     | <a href="#">Buy now</a> |
| 8   | <a href="#">6AH14711105B</a><br>Muffler 1<br>L(22.1")     | <a href="#">Buy now</a> |
| 9   | <a href="#">9707506025</a><br>Bolt                        | <a href="#">Buy now</a> |
| 10  | <a href="#">9299506600</a><br>Washer, plain (646)         | <a href="#">Buy now</a> |
| 11  | <a href="#">6AH4113800</a><br>Seal, ext. 1                | <a href="#">Buy now</a> |
| 12  | <a href="#">6AH45111004D</a><br>Casing, upper<br>S(17.1") | <a href="#">Buy now</a> |
| 12  | <a href="#">6AH45111104D</a><br>Casing, upper<br>L(22.1") | <a href="#">Buy now</a> |
| 13  | <a href="#">9707508030</a><br>Bolt, hexagon (fj1)         | <a href="#">Buy now</a> |

## Upper Casing



| Ref | Part   |                         |
|-----|--|-------------------------|
| 14  | <a href="#">9299508600</a><br>Washer, plain (663)              | <a href="#">Buy now</a> |
| 15  | <a href="#">9360412M07</a><br>Pin, dowel (688)                 | <a href="#">Buy now</a> |
| 16  | <a href="#">9709505010</a><br>Bolt (682)                       | <a href="#">Buy now</a> |
| 17  | <a href="#">9299505600</a><br>Washer, plain (646)              | <a href="#">Buy now</a> |
| 18  | <a href="#">68T4532100</a><br>Plate                            | <a href="#">Buy now</a> |
| 19  | <a href="#">9709506008</a><br>Bolt (fj1)                       | <a href="#">Buy now</a> |
| 20  | <a href="#">9048014M54</a><br>Grommet                          | <a href="#">Buy now</a> |
| 21  | <a href="#">6824531800</a><br>Bushing, drive shaft<br>L(22.1") | <a href="#">Buy now</a> |
| 22  | <a href="#">9342030042</a><br>Circlip (650)<br>L(22.1")        | <a href="#">Buy now</a> |

# Valve



  
6AH1100-F050

| Ref | Part   |                         |
|-----|--|-------------------------|
| 1   | <a href="#">6AH1211100</a><br>Valve, intake          | <a href="#">Buy now</a> |
| 2   | <a href="#">6AH1212100</a><br>Valve, exhaust         | <a href="#">Buy now</a> |
| 3   | <a href="#">62Y1211600</a><br>Seat, valve spring     | <a href="#">Buy now</a> |
| 4   | <a href="#">3YF1211300</a><br>Spring, valve inner    | <a href="#">Buy now</a> |
| 5   | <a href="#">30X1211700</a><br>Retainer, valve spring | <a href="#">Buy now</a> |
| 6   | <a href="#">30X1211800</a><br>Cotter, valve          | <a href="#">Buy now</a> |
| 7   | <a href="#">51Y1211900</a><br>Seal, valve stem       | <a href="#">Buy now</a> |
| 8   | <a href="#">66M1214600</a><br>Shaft, rocker          | <a href="#">Buy now</a> |
| 9   | <a href="#">6AH1227900</a><br>Plate                  | <a href="#">Buy now</a> |
| 10  | <a href="#">9701306012</a><br>Bolt(gh1)              | <a href="#">Buy now</a> |
| 11  | <a href="#">9038713006</a><br>Collar                 | <a href="#">Buy now</a> |
| 12  | <a href="#">90501120A5</a><br>Spring, compression    | <a href="#">Buy now</a> |
| 13  | <a href="#">6AH1215100</a><br>Arm, valve rocker      | <a href="#">Buy now</a> |
| 14  | <a href="#">64J1215900</a><br>Screw, valve adjusting | <a href="#">Buy now</a> |
| 15  | <a href="#">62Y1215800</a><br>Nut, lock              | <a href="#">Buy now</a> |

# Disclaimer

This document is provided for convenience only. It is **not** an official Yamaha publication and is **not supplied, endorsed, or approved** by Yamaha Motor Co., Ltd.

Reasonable efforts are made to keep information accurate; however diagrams, part references, supersessions, descriptions, and applicability may contain errors or omissions. Specifications and part availability may change without notice.

You are responsible for confirming the correct parts for your engine (including model code, year, serial range, and any superseded part numbers) before ordering or fitting.