



Yamaha HARMO 2021

Parts Manual

www.floodmarine.co.uk

+44 2882 246 539

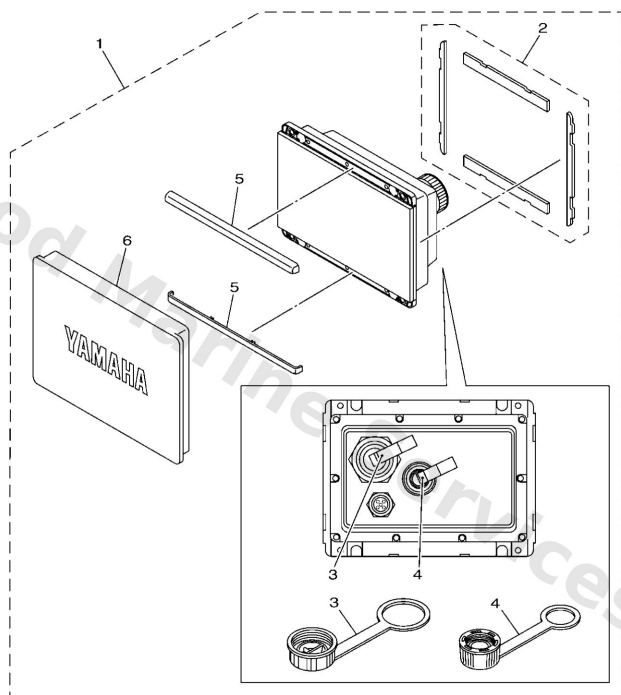
Authorised Yamaha Dealers



Contents

| | |
|-------------------------|----|
| CL5 DISPLAY | 3 |
| DRIVE UNIT | 4 |
| ELECTRICAL 1 | 6 |
| ELECTRICAL 2 | 9 |
| OPTIONAL PARTS 1 | 12 |
| OPTIONAL PARTS 2 | 13 |
| TOP COWLING | 14 |

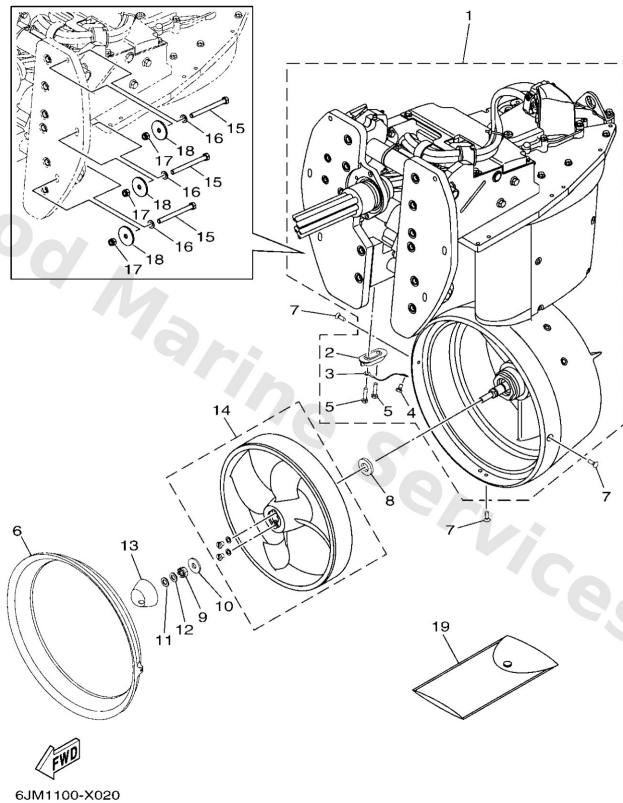
CI5 Display



6ALH300-V410

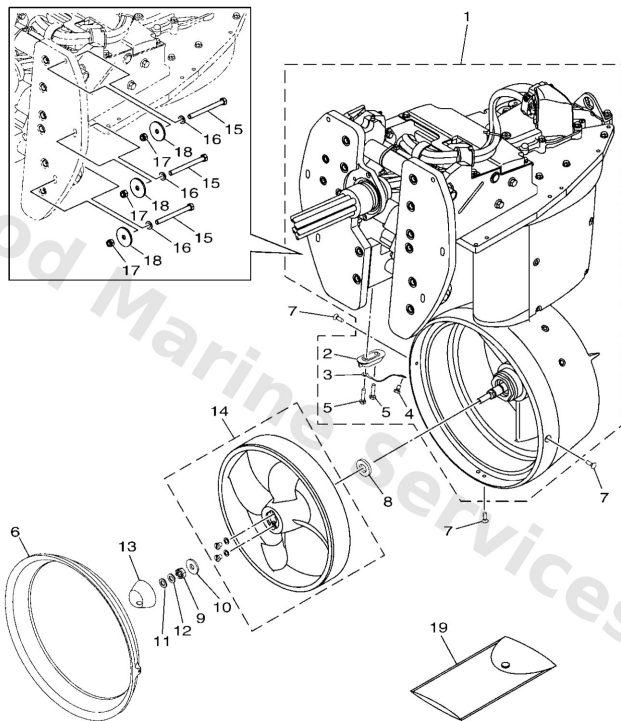
| Ref | Part | |
|-----|---|-------------------------|
| 1 | 6YM8371013 CI5 display(with wi-fi) WITHOUT Wi-Fi | Buy now |
| 2 | 6YM2248000 Seal assembly | Buy now |
| 3 | 6YM8395600 Cap 1 | Buy now |
| 4 | 6YD8395700 Cap 2 | Buy now |
| 5 | 6YM8351200 Ring, speed meter | Buy now |
| 6 | 6YM8727800 Cover, meter | Buy now |

Drive Unit



| Ref | Part | |
|-----|---|-------------------------|
| 1 | 6JMW450A00P0 Drive unit | Buy now |
| 2 | 65W4525100 Anode | Buy now |
| 3 | 6E58214800 Wire, lead 5 | Buy now |
| 4 | 97E9506510 Bolt, hexagon w/w deep recess | Buy now |
| 5 | 9010106020 Bolt | Buy now |
| 6 | 6JM1269200P0 Duct, 2 | Buy now |
| 7 | 9015205M02 Screw, countersunk | Buy now |
| 8 | 9020117M00 Washer, plate(6h1) | Buy now |
| 9 | 9017110M01 Nut castle (683) | Buy now |
| 10 | 9020110M01 Washer, plate(6m7) | Buy now |
| 11 | 9299510600 Washer, plate | Buy now |
| 12 | 9299010100 Ybs67-10 washer, spring | Buy now |
| 13 | 6JM4598500P0 Cap, propeller | Buy now |
| 14 | 6JMW511A00P0 Impeller 1 | Buy now |
| 15 | 9010108M88 Bolt (6g8) | Buy now |

Drive Unit

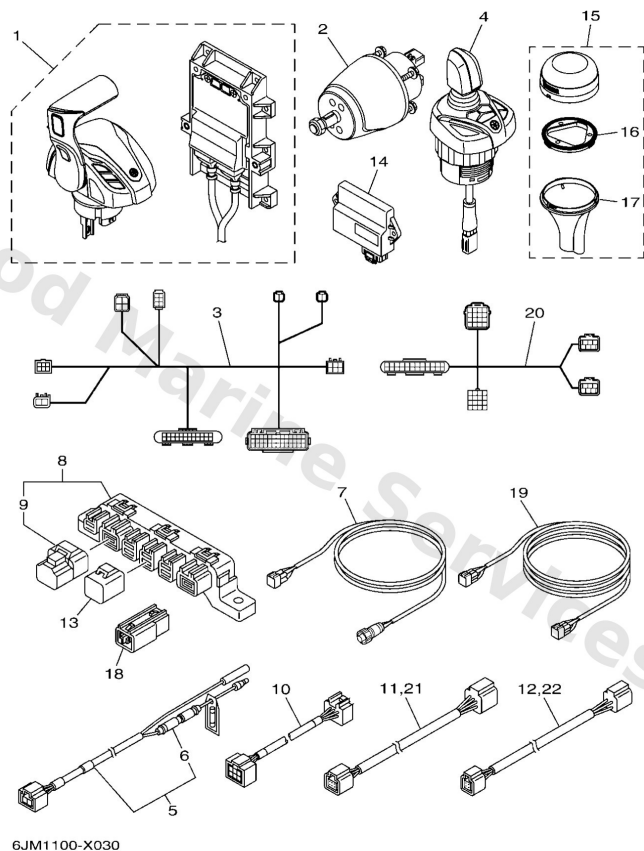


FWD
6JM1100-X020

| Ref | Part | |
|-----|---|-------------------------|
| 16 | 9299008600 Washer, plain (663) | Buy now |
| 17 | 9018508057 Nut, nylon (6j8) | Buy now |
| 18 | 9020108MA4 Washer, plate (6g8) | Buy now |
| 19 | 6JMW281000 Tool kit | Buy now |

Electrical 1

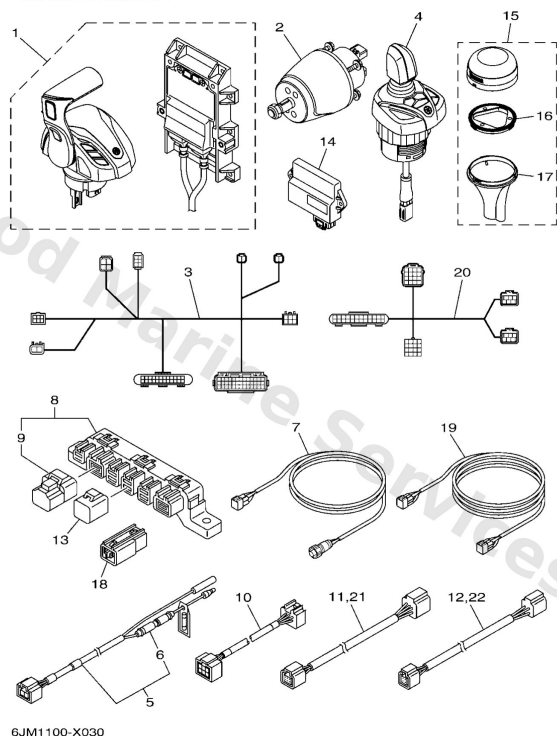
SINGLE MOTER



| Ref | Part | |
|-----|--|-------------------------|
| 1 | 6JM4820501 Remote control assembly | Buy now |
| 2 | 6JM615A000 Helm assembly. | Buy now |
| 3 | 6JM8238600 Extension, wire harness | Buy now |
| 4 | 6JM482A001 Joystick assembly | Buy now |
| 5 | 6Y88355302 8ft power wire | Buy now |
| 6 | 6G18215101 Fuse (10a) | Buy now |
| 7 | 6YM8355300 Conversion harness c15-pigtail | Buy now |
| 8 | 6Y88192001 Multi-hub | Buy now |
| 9 | 6Y88537101 End of line resistor | Buy now |
| 10 | 6Y98355300 Wire, lead | Buy now |
| 21 | 6Y88255301 Main bus wire 0.3m-1ft UR | Buy now |
| 12 | 6Y88252131 Pigtail bus wire 1.8m-6ft | Buy now |
| 13 | 6Y88258211 White cap 1 (4pin) | Buy now |
| 14 | 6X98591T12 Bcu (ap/joystick single) ASK TO MARINE DIV | Buy now |
| 15 | 6X98810700 Gps unit | Buy now |

Electrical 1

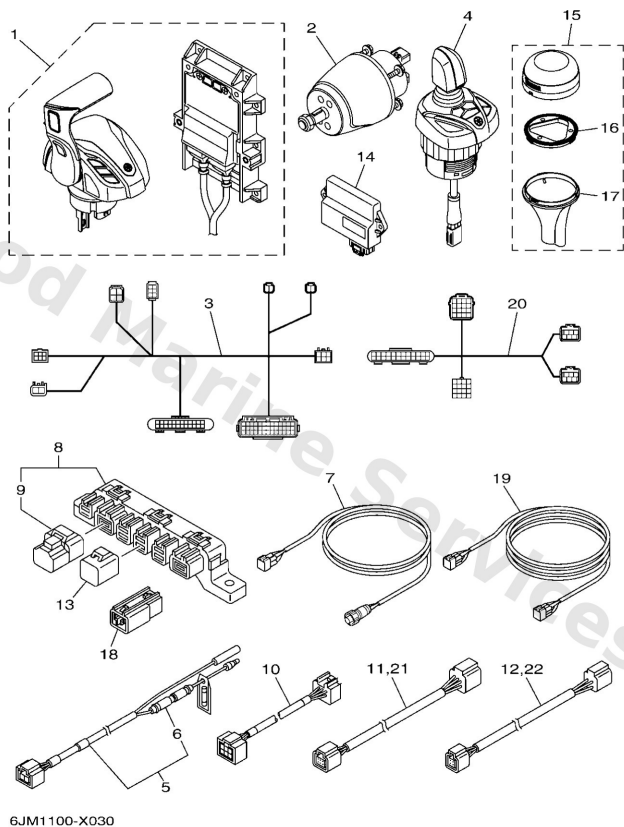
SINGLE MOTER



| Ref | Part | |
|-----|---|-------------------------|
| 16 | 6X98252H00 Plate, holder | Buy now |
| 17 | 6X98255H00 Holder, socket | Buy now |
| 18 | 6Y88192011 Single-hub | Buy now |
| 19 | 6X68258A01 Extension, wire harness(6.1m) UR 6M-19FT MAIN-HARNESS (16P) | Buy now |
| 19 | 6X68258A11 16p dbw main harness 7m-23ft UR 7M-23FT MAIN-HARNESS (16P) | Buy now |
| 19 | 6X68258A21 16p dbw main harness 8m-26ft UR 8M-26FT MAIN-HARNESS (16P) | Buy now |
| 19 | 6X68258A31 16p dbw main harness 10m-32ft UR 10M-32FT MAIN-HARNESS (16P) | Buy now |
| 19 | 6X68258A41 16p dbw main harness 12m-38ft UR 12M-39FT MAIN-HARNESS (16P) | Buy now |
| 19 | 6X68258A51 Extension, wire harness (3.7m) | Buy now |
| 19 | 6X68258A61 Extension, wire harness (5.2m) | Buy now |
| 19 | 6X68258A71 16p dbw main harness 15m-49ft UR 15M-49FT MAIN-HARNESS (16P) | Buy now |
| 19 | 6X68258A91 16P Dbw Harness 1.5M-5Ft UR 1.5M-5FT MAIN-HARNESS (16P) | Buy now |
| 19 | 6X68258A81 16p dbw main harness 24m-79ft UR 24M-79FT MAIN-HARNESS (16P) | Buy now |
| 20 | 6GR8258A00 Helm harness (main/single 0.9m) UR SINGLE ENGINE (MAIN ST) | Buy now |
| 20 | 6GR8258A40 Helm harness (main/single)1.8m UR SINGLE ENGINE (MAIN ST) | Buy now |

Electrical 1

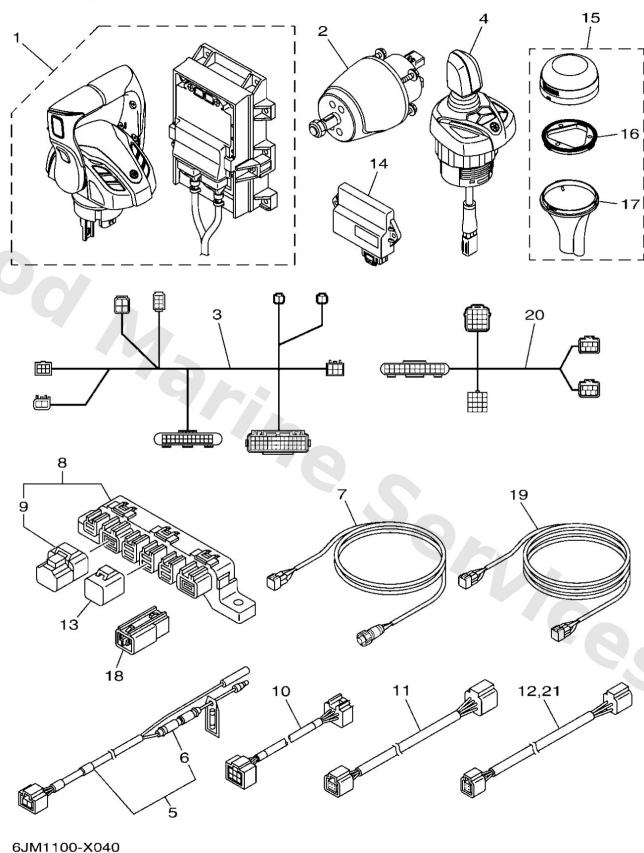
SINGLE MOTER



| Ref | Part | |
|-----|---|-------------------------|
| 21 | 6Y88255311 Main bus wire 4.6m (15ft) UR | Buy now |
| 21 | 6Y88255321 Main bus wire 6.1m (20ft) UR | Buy now |
| 21 | 6Y88255331 Main bus wire 7.6m (25ft) UR | Buy now |
| 21 | 6Y88255341 Main bus wire 9.1m (30ft) UR | Buy now |
| 21 | 6Y88255350 Main bus wire 3.0m-10ft UR | Buy now |
| 22 | 6Y88252101 1ft pigtail bus UR | Buy now |
| 22 | 6Y88252111 Pigtail bus wire 0.6m-2ft UR | Buy now |

Electrical 2

TWIN MOTER

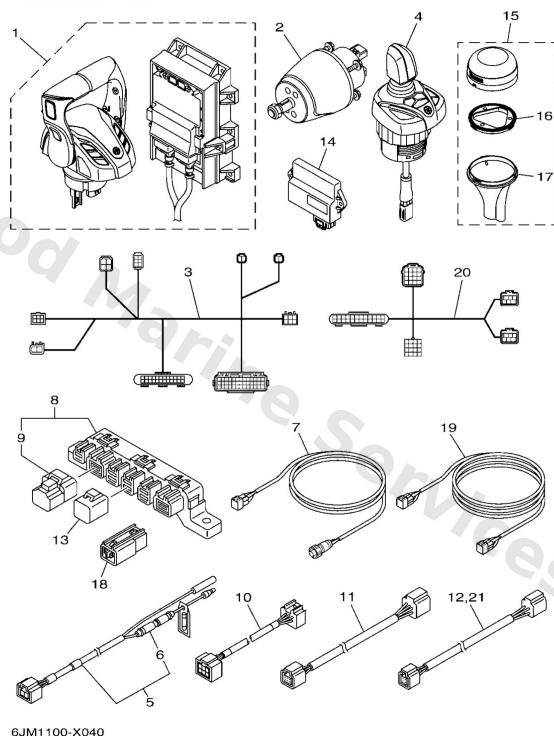


6JM1100-X040

| Ref | Part | |
|-----|---|-------------------------|
| 1 | 6JM4820701 Remote control assembly | Buy now |
| 2 | 6JM615A000 Helm assembly. | Buy now |
| 3 | 6JM8238600 Extension, wire harness | Buy now |
| 4 | 6JM482A001 Joystick assembly | Buy now |
| 5 | 6Y88355302 8ft power wire | Buy now |
| 6 | 6G18215101 Fuse (10a) | Buy now |
| 7 | 6YM8355300 Conversion harness c15-pigtail | Buy now |
| 8 | 6Y88192001 Multi-hub | Buy now |
| 9 | 6Y88537101 End of line resistor | Buy now |
| 10 | 6Y98355300 Wire, lead | Buy now |
| 11 | 6Y88255301 Main bus wire 0.3m-1ft | Buy now |
| 21 | 6Y88252131 Pigtail bus wire 1.8m-6ft UR | Buy now |
| 13 | 6Y88258211 White cap 1 (4pin) | Buy now |
| 14 | 6X98591T22 Bcu (ap/joystick twin) ASK TO MARINE DIV | Buy now |
| 15 | 6X98810700 Gps unit | Buy now |

Electrical 2

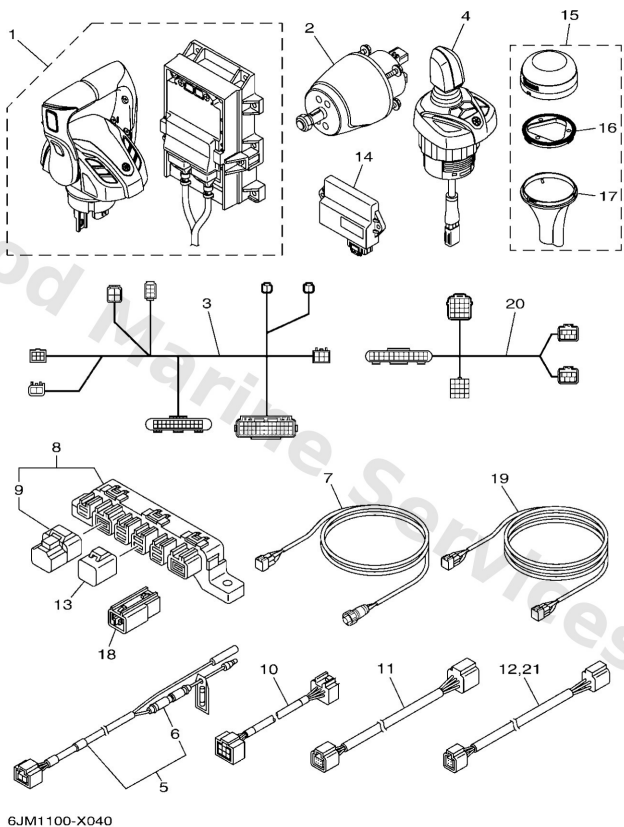
TWIN MOTER



| Ref | Part | |
|-----|---|-------------------------|
| 16 | 6X98252H00 Plate, holder | Buy now |
| 17 | 6X98255H00 Holder, socket | Buy now |
| 18 | 6Y88192011 Single-hub | Buy now |
| 19 | 6X68258A01 Extension, wire harness(6.1m) UR 6M-19FT MAIN-HARNESS (16P) | Buy now |
| 19 | 6X68258A11 16p dbw main harness 7m-23ft UR 7M-23FT MAIN-HARNESS (16P) | Buy now |
| 19 | 6X68258A21 16p dbw main harness 8m-26ft UR 8M-26FT MAIN-HARNESS (16P) | Buy now |
| 19 | 6X68258A31 16p dbw main harness 10m-32ft UR 10M-32FT MAIN-HARNESS (16P) | Buy now |
| 19 | 6X68258A41 16p dbw main harness 12m-38ft UR 12M-39FT MAIN-HARNESS (16P) | Buy now |
| 19 | 6X68258A51 Extension, wire harness (3.7m) | Buy now |
| 19 | 6X68258A61 Extension, wire harness (5.2m) | Buy now |
| 19 | 6X68258A71 16p dbw main harness 15m-49ft UR 15M-49FT MAIN-HARNESS (16P) | Buy now |
| 19 | 6X68258A91 16P Dbw Harness 1.5M-5Ft UR 1.5M-5FT MAIN-HARNESS (16P) | Buy now |
| 19 | 6X68258A81 16p dbw main harness 24m-79ft UR 24M-79FT MAIN-HARNESS (16P) | Buy now |
| 20 | 6GR8258A10 Helm harness multi engines 0.9 UR MULTIPLE ENGINES (MAIN ST) | Buy now |
| 20 | 6GR8258A50 Helm harness multi engines 1.8 UR MULTIPLE ENGINES (MAIN ST) | Buy now |

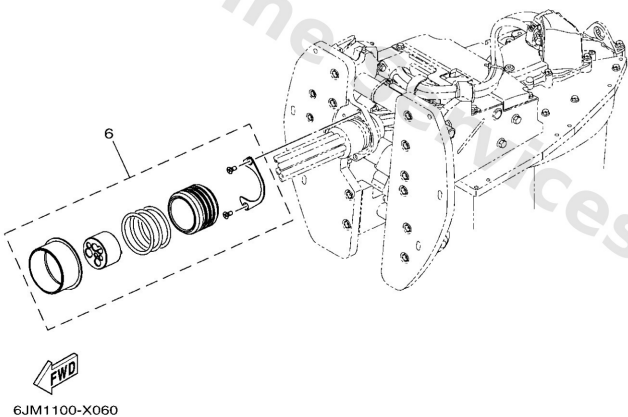
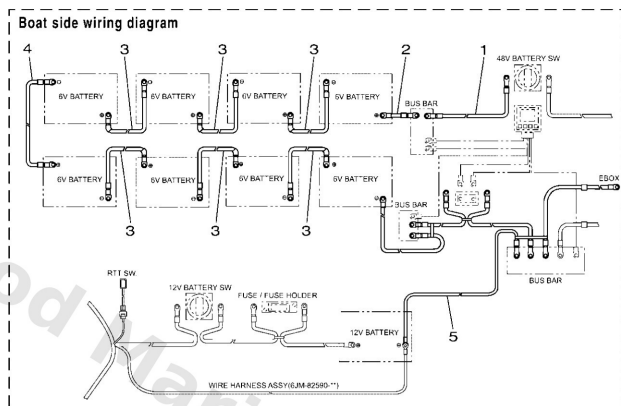
Electrical 2

TWIN MOTER



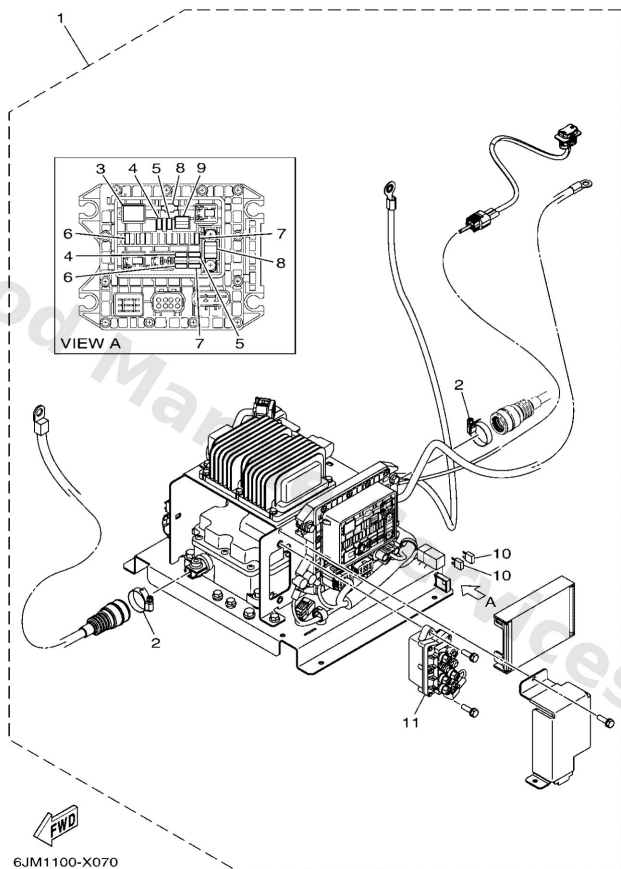
| Ref | Part | |
|-----|---|-------------------------|
| 20 | 6GR8258A60 Helm harness multi engines 2.7 UR MULTIPLE ENGINES (MAIN ST) | Buy now |
| 21 | 6Y88252101 1ft pigtail bus UR | Buy now |
| 21 | 6Y88252111 Pigtail bus wire 0.6m-2ft UR | Buy now |
| 21 | 6Y88252121 Pigtail bus wire 0.9m-3ft UR | Buy now |
| 21 | 6Y88252141 9ft pigtail bus UR | Buy now |
| 21 | 6Y88252151 Pigtail bus wire 3.6m-12ft UR | Buy now |

Optional Parts 1



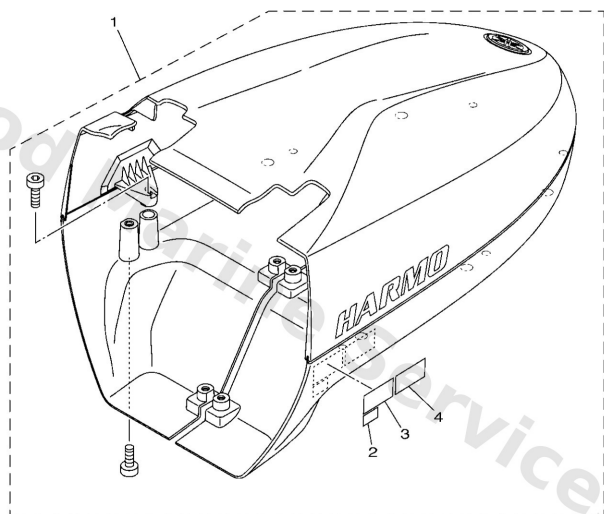
| Ref | Part | |
|-----|--|-------------------------|
| 1 | 6JM8222310 Wire, high voltage plus lead 2 | Buy now |
| 2 | 6JM8222320 Wire, high voltage plus lead 2 | Buy now |
| 3 | 6JM8221200 Wire, high voltage lead 2 | Buy now |
| 4 | 6JM8221210 Wire, high voltage lead 2 | Buy now |
| 5 | 6JM8222450 Wire, high voltage minus lead2 | Buy now |
| 6 | 6JMW427200 Grommet set | Buy now |

Optional Parts 2



| Ref | Part | |
|-----|--|-------------------------|
| 1 | 6JMW82A000 Electric unit | Buy now |
| 2 | 6JM8236100 Clamp, cord | Buy now |
| 3 | 6EX8195A00 Relay assembly | Buy now |
| 4 | 67F8215130 Fuse (3a) | Buy now |
| 5 | 67F8215120 Fuse (5a) | Buy now |
| 6 | 67F8215140 Fuse (10a) | Buy now |
| 7 | 67F8215110 Fuse | Buy now |
| 8 | 6JM8215100 Fuse | Buy now |
| 9 | 6EX2812A00 Puller, fuse | Buy now |
| 11 | 63P8195000 Relay assembly | Buy now |

Top Cowling




6JM1100-X010

| Ref | Part | |
|-----|--|-------------------------|
| 1 | 6JMW426000P0 Top cowling assembly | Buy now |
| 2 | 6AH8199600 Mark | Buy now |
| 3 | 6JM4279400 Label, warning (general) | Buy now |
| 4 | 6JM4279410 Label, warning (general) | Buy now |

Disclaimer

This document is provided for convenience only. It is **not** an official Yamaha publication and is **not supplied, endorsed, or approved** by Yamaha Motor Co., Ltd.

Reasonable efforts are made to keep information accurate; however diagrams, part references, supersessions, descriptions, and applicability may contain errors or omissions. Specifications and part availability may change without notice.

You are responsible for confirming the correct parts for your engine (including model code, year, serial range, and any superseded part numbers) before ordering or fitting.