



# Yamaha Helm Master Joystick Controller System 2013

Parts Manual

[www.floodmarine.co.uk](http://www.floodmarine.co.uk)

+44 2882 246 539

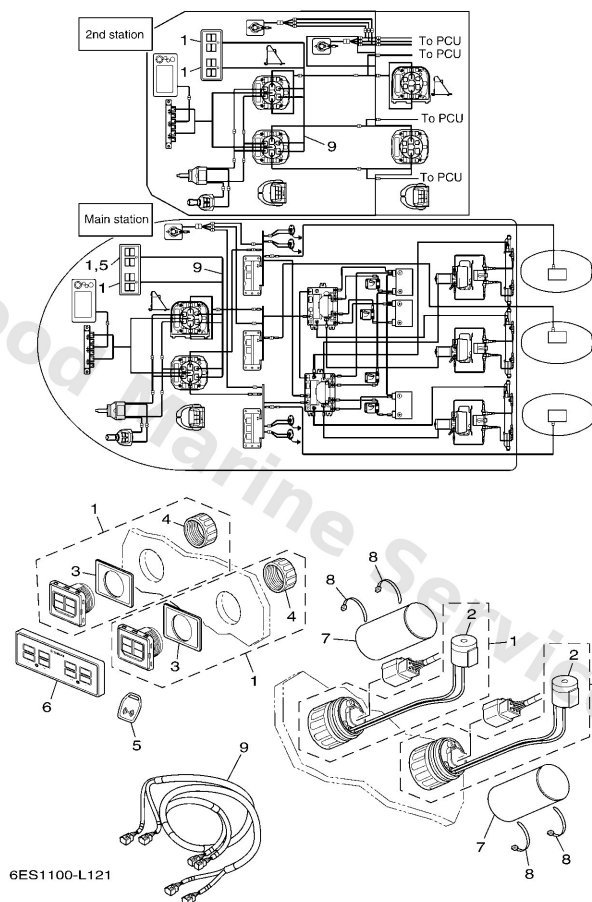
Authorised Yamaha Dealers



# Contents

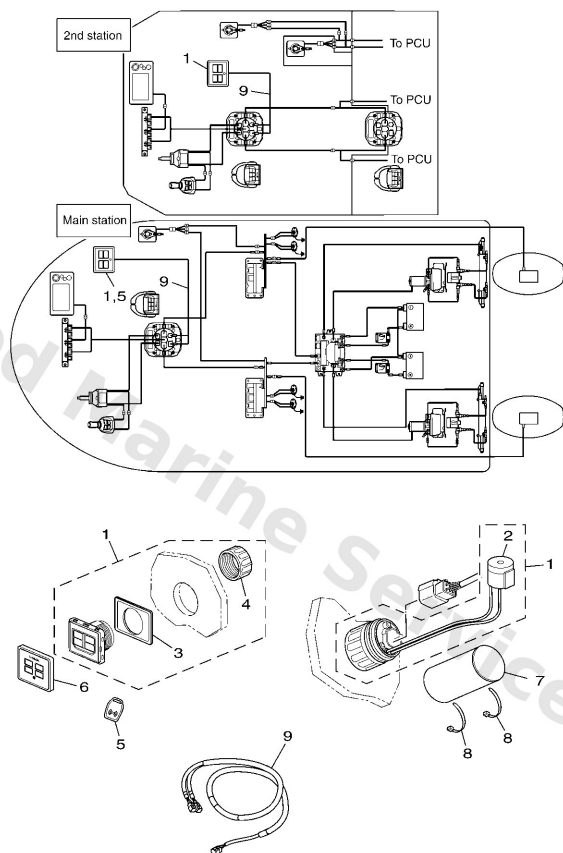
|   |    |
|---|----|
| <b>EKS ASSY (TRIPLE)</b>                | 3  |
| <b>EKS ASSY (TWIN)</b>                  | 4  |
| <b>HARNESS (TRIPLE)</b>                 | 5  |
| <b>HARNESS (TWIN)</b>                   | 6  |
| <b>MULTI DISPLAY (TRIPLE)</b>           | 7  |
| <b>MULTI DISPLAY (TWIN)</b>             | 8  |
| <b>OPTIONAL PARTS</b>                   | 9  |
| <b>PANEL SWITCH (TRIPLE)</b>            | 10 |
| <b>PANEL SWITCH (TWIN)</b>              | 11 |
| <b>REMOCON. &amp; JOYSTICK (TRIPLE)</b> | 12 |
| <b>REMOCON. &amp; JOYSTICK (TWIN)</b>   | 13 |
| <b>STEERING KIT (TRIPLE)</b>            | 14 |
| <b>STEERING KIT (TWIN)</b>              | 15 |

## Eks Assy (Triple)



| Ref | Part   |                         |
|-----|--|-------------------------|
| 1   | <a href="#">6ES8251010</a><br>Eks assembly Without Ek Fob<br>ASK TO MARINE DIV | <a href="#">Buy now</a> |
| 2   | <a href="#">6ES8338300</a><br>Buzzer   | <a href="#">Buy now</a> |
| 3   | <a href="#">6ES8254300</a><br>Gasket   | <a href="#">Buy now</a> |
| 4   | <a href="#">6ES4815600</a><br>Nut 1  | <a href="#">Buy now</a> |
| 5   | <a href="#">6ES8251100</a><br>Key, main switch                                 | <a href="#">Buy now</a> |
| 6   | <a href="#">6ES8256810</a><br>Eks Cover (Triple)                               | <a href="#">Buy now</a> |
| 7   | <a href="#">6ES8259900</a><br>Cover, connector                                 | <a href="#">Buy now</a> |
| 8   | <a href="#">9046514M66</a><br>Clamp  | <a href="#">Buy now</a> |
| 9   | <a href="#">6ES8258A50</a><br>Eks Harness (Triple)                             | <a href="#">Buy now</a> |

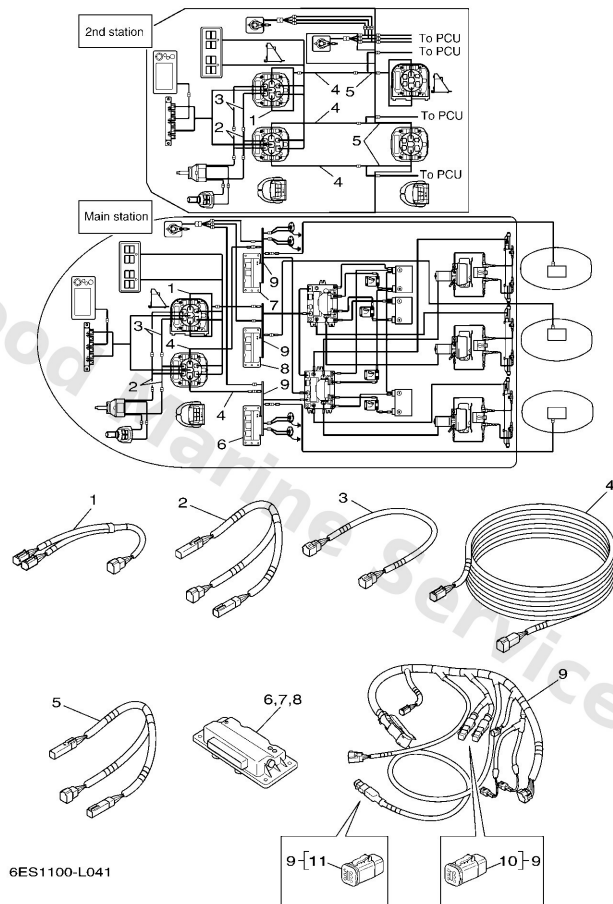
## Eks Assy (Twin)



6ES1100-L111

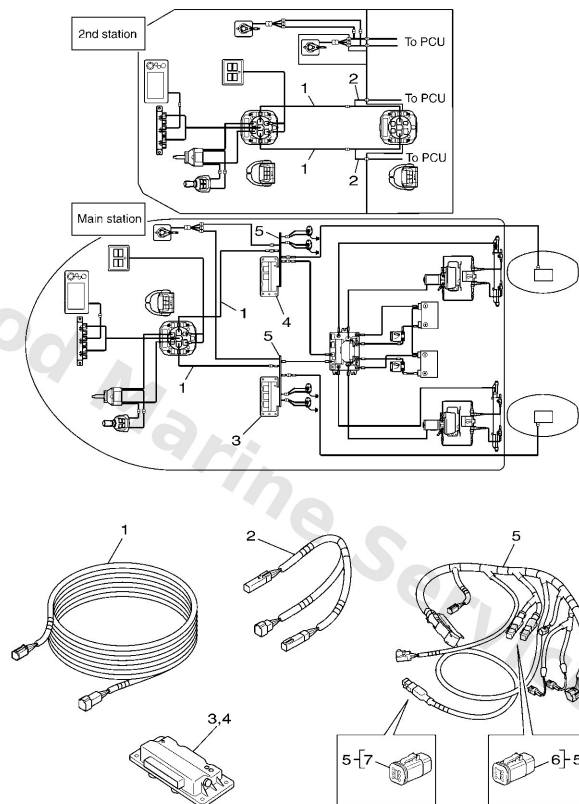
| Ref | Part  |                         |
|-----|---|-------------------------|
| 1   | <a href="#">6ES8251010</a><br>Eks assembly Without Ek Fob<br><b>ASK TO MARINE DIV</b> | <a href="#">Buy now</a> |
| 2   | <a href="#">6ES8338300</a><br>Buzzer  | <a href="#">Buy now</a> |
| 3   | <a href="#">6ES8254300</a><br>Gasket  | <a href="#">Buy now</a> |
| 4   | <a href="#">6ES4815600</a><br>Nut 1   | <a href="#">Buy now</a> |
| 5   | <a href="#">6ES8251100</a><br>Key, main switch  | <a href="#">Buy now</a> |
| 6   | <a href="#">6ES8256800</a><br>Eks cover (twin)  | <a href="#">Buy now</a> |
| 7   | <a href="#">6ES8259900</a><br>Cover, connector  | <a href="#">Buy now</a> |
| 8   | <a href="#">9046514M66</a><br>Clamp   | <a href="#">Buy now</a> |
| 9   | <a href="#">6ES8258A40</a><br>Eks harness (twin)                                      | <a href="#">Buy now</a> |

## Harness (Triple)



| Ref | Part   |                         |
|-----|--|-------------------------|
| 1   | <a href="#">6ES8259020</a><br>Center Hcu Harness                             | <a href="#">Buy now</a> |
| 2   | <a href="#">6ES8259000</a><br>Helm "T" Harness For Triple                    | <a href="#">Buy now</a> |
| 3   | <a href="#">6ES82590A0</a><br>Helm Adapter Harness (Triple)                  | <a href="#">Buy now</a> |
| 4   | <a href="#">6ES8259010</a><br>Hcu-Pcu Harness (34Ft/11M)                     | <a href="#">Buy now</a> |
| 5   | <a href="#">6ES8258A80</a><br>T harness, 2nd station                         | <a href="#">Buy now</a> |
| 6   | <a href="#">6ES8559030</a><br>Pcu for triple, port side<br>ASK TO MARINE DIV | <a href="#">Buy now</a> |
| 7   | <a href="#">6ES8559040</a><br>Pcu for triple, stbd side<br>ASK TO MARINE DIV | <a href="#">Buy now</a> |
| 8   | <a href="#">6ES8559050</a><br>Pcu For Triple Center<br>ASK TO MARINE DIV     | <a href="#">Buy now</a> |
| 9   | <a href="#">6ES8258A00</a><br>Pcu Harness                                    | <a href="#">Buy now</a> |
| 10  | <a href="#">6ES8258200</a><br>Cap 1  | <a href="#">Buy now</a> |
| 11  | <a href="#">6ES8258500</a><br>Cap 2  | <a href="#">Buy now</a> |

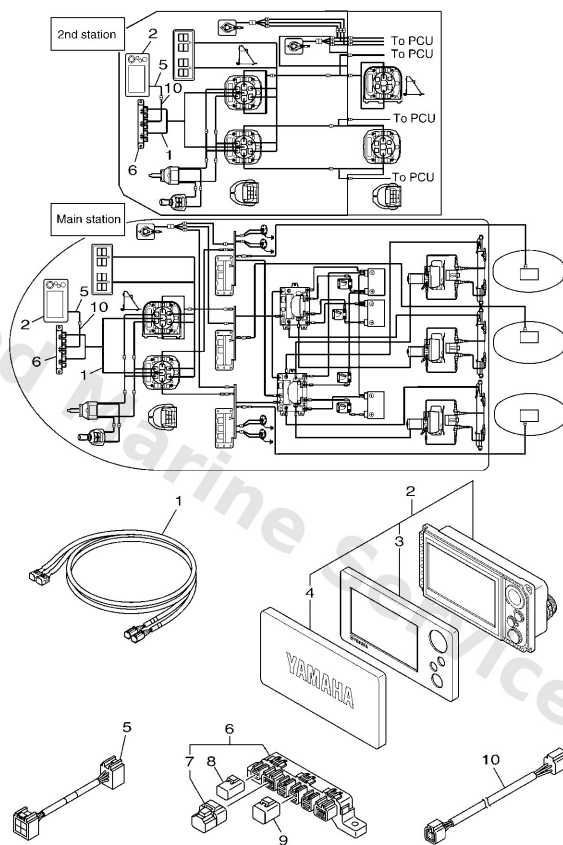
## Harness (Twin)



6ES1100-L031

| Ref | Part   |                         |
|-----|--|-------------------------|
| 1   | <a href="#">6ES8259010</a><br>Hcu-Pcu Harness (34Ft/11M)                   | <a href="#">Buy now</a> |
| 2   | <a href="#">6ES8258A80</a><br>T harness, 2nd station                       | <a href="#">Buy now</a> |
| 3   | <a href="#">6ES8559010</a><br>Pcu for twin, port side<br>ASK TO MARINE DIV | <a href="#">Buy now</a> |
| 4   | <a href="#">6ES8559020</a><br>Pcu For Twin Stbd Side<br>ASK TO MARINE DIV  | <a href="#">Buy now</a> |
| 5   | <a href="#">6ES8258A00</a><br>Pcu Harness                                  | <a href="#">Buy now</a> |
| 6   | <a href="#">6ES8258200</a><br>Cap 1  | <a href="#">Buy now</a> |
| 7   | <a href="#">6ES8258500</a><br>Cap 2  | <a href="#">Buy now</a> |

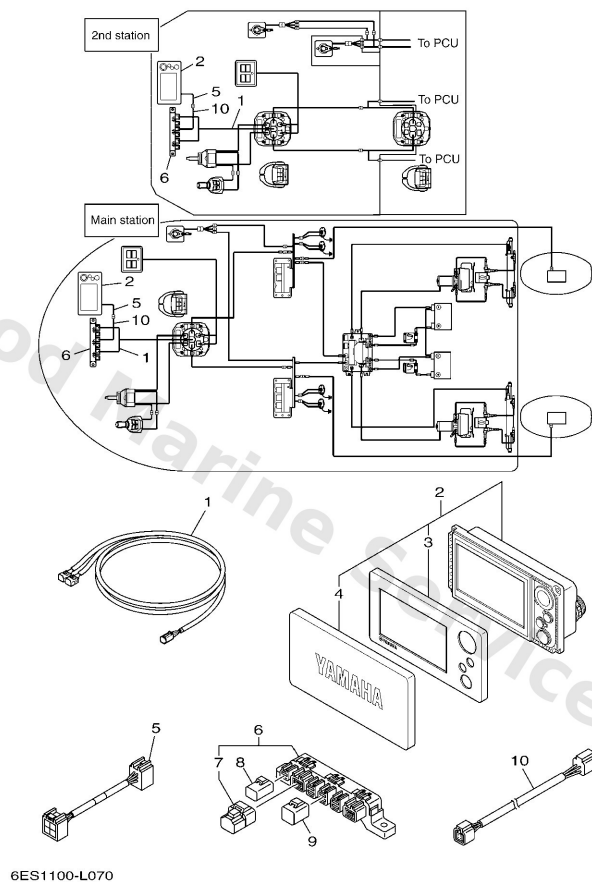
## Multi Display (Triple)



6ES1100-L080

| Ref | Part  |                         |
|-----|---|-------------------------|
| 1   | <a href="#">6ES8355370</a><br>Remote ctr-hub harness, 3&4 | <a href="#">Buy now</a> |
| 2   | <a href="#">6Y98371010</a><br>Multi display assembly      | <a href="#">Buy now</a> |
| 3   | <a href="#">6Y98351200</a><br>Cover, front                | <a href="#">Buy now</a> |
| 4   | <a href="#">6Y98727800</a><br>Cover, meter                | <a href="#">Buy now</a> |
| 5   | <a href="#">6Y98355340</a><br>Wire, lead                  | <a href="#">Buy now</a> |
| 6   | <a href="#">6Y88192001</a><br>Multi-hub                   | <a href="#">Buy now</a> |
| 7   | <a href="#">6Y88537101</a><br>End of line resister        | <a href="#">Buy now</a> |
| 8   | <a href="#">6Y88258201</a><br>Red cap 1 (2pin)            | <a href="#">Buy now</a> |
| 9   | <a href="#">6Y88258211</a><br>White cap 1 (4pin)          | <a href="#">Buy now</a> |
| 10  | <a href="#">6Y88252111</a><br>Pigtail bus wire 0.6m-2ft   | <a href="#">Buy now</a> |

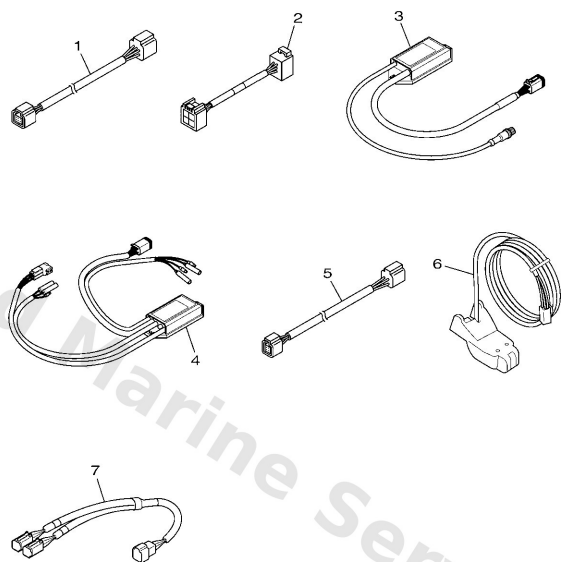
## Multi Display (Twin)



| Ref | Part  |                         |
|-----|---|-------------------------|
| 1   | <a href="#">6ES8355360</a><br>Remote Ctr-Hub Har        | <a href="#">Buy now</a> |
| 2   | <a href="#">6Y98371010</a><br>Multi display assembly    | <a href="#">Buy now</a> |
| 3   | <a href="#">6Y98351200</a><br>Cover, front              | <a href="#">Buy now</a> |
| 4   | <a href="#">6Y98727800</a><br>Cover, meter              | <a href="#">Buy now</a> |
| 5   | <a href="#">6Y98355340</a><br>Wire, lead                | <a href="#">Buy now</a> |
| 6   | <a href="#">6Y88192001</a><br>Multi-hub                 | <a href="#">Buy now</a> |
| 7   | <a href="#">6Y88537101</a><br>End of line resistor      | <a href="#">Buy now</a> |
| 8   | <a href="#">6Y88258201</a><br>Red cap 1 (2pin)          | <a href="#">Buy now</a> |
| 9   | <a href="#">6Y88258211</a><br>White cap 1 (4pin)        | <a href="#">Buy now</a> |
| 10  | <a href="#">6Y88252111</a><br>Pigtail bus wire 0.6m-2ft | <a href="#">Buy now</a> |



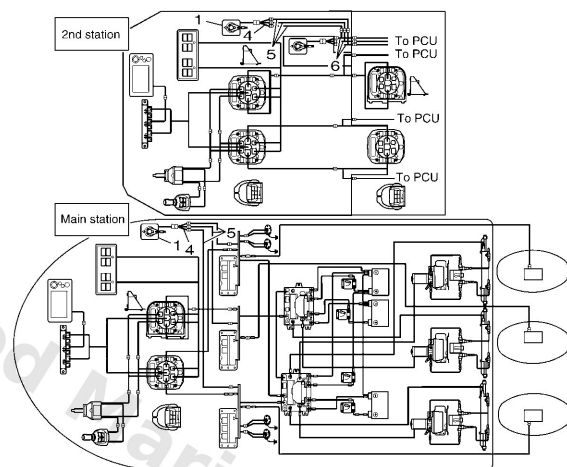
## Optional Parts



6ES1100-L130

| Ref | Part   |                         |
|-----|--|-------------------------|
| 1   | <a href="#">6Y88255301</a><br>Main bus wire 0.3m-1ft                   | <a href="#">Buy now</a> |
| 2   | <a href="#">6Y98355350</a><br>Wire, lead<br>FOR INTERFACE UNIT         | <a href="#">Buy now</a> |
| 3   | <a href="#">6Y98A2D000</a><br>Interface Unit<br>GATEWAY                | <a href="#">Buy now</a> |
| 4   | <a href="#">6Y98A2D010</a><br>Analog gauge interface<br>ANALOGUE GAUGE | <a href="#">Buy now</a> |
| 5   | <a href="#">6Y88252101</a><br>1ft pigtail bus<br>UR                    | <a href="#">Buy now</a> |
| 5   | <a href="#">6Y88252121</a><br>Pigtail bus wire 0.9m-3ft<br>UR          | <a href="#">Buy now</a> |
| 5   | <a href="#">6Y88252131</a><br>Pigtail bus wire 1.8m-6ft<br>UR          | <a href="#">Buy now</a> |
| 5   | <a href="#">6Y88252141</a><br>9ft pigtail bus<br>UR                    | <a href="#">Buy now</a> |
| 5   | <a href="#">6Y88252151</a><br>Pigtail bus wire 3.6m-12ft<br>UR         | <a href="#">Buy now</a> |
| 6   | <a href="#">6Y98368800</a><br>Sensor assembly                          | <a href="#">Buy now</a> |
| 7   | <a href="#">6ES82590B0</a><br>Wire Harness assembly                    | <a href="#">Buy now</a> |

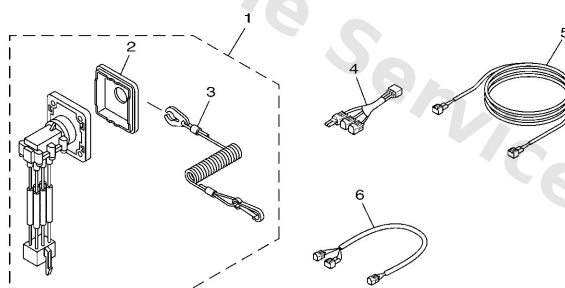
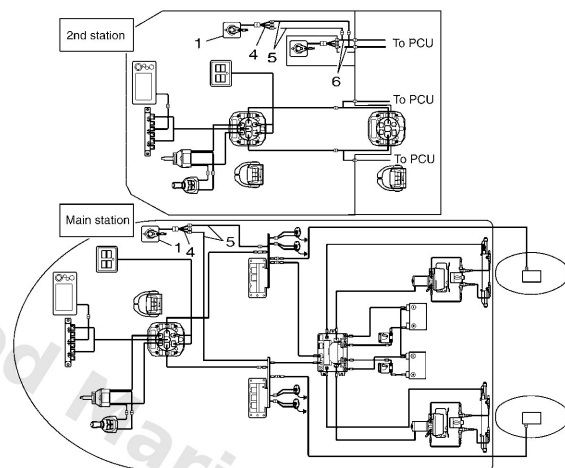
## Panel Switch (Triple)



6ES1100-L100

| Ref | Part  |                         |
|-----|---|-------------------------|
| 1   | <a href="#">6X68257090</a><br>Lanyard switch -2nd station | <a href="#">Buy now</a> |
| 2   | <a href="#">6X68257150</a><br>Panel, switch               | <a href="#">Buy now</a> |
| 3   | <a href="#">6828255600</a><br>Lanyard, stop switch        | <a href="#">Buy now</a> |
| 4   | <a href="#">6ES8258A30</a><br>Lanyard Harness 6P          | <a href="#">Buy now</a> |
| 5   | <a href="#">6ES8258A20</a><br>Lanyard Harness 2P          | <a href="#">Buy now</a> |
| 6   | <a href="#">6ES8258A70</a><br>Lanyard Harness 2           | <a href="#">Buy now</a> |

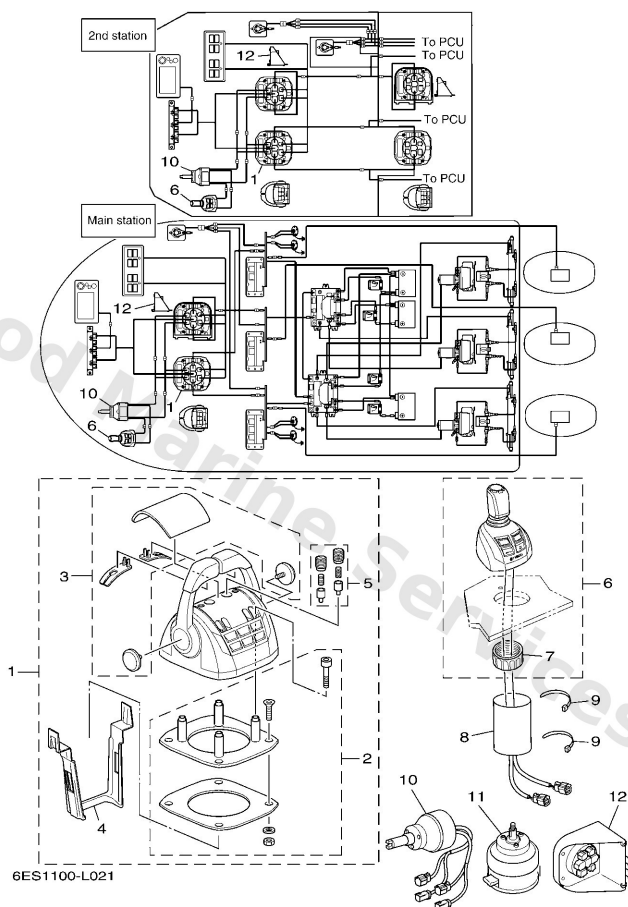
## Panel Switch (Twin)



6ES1100-L090

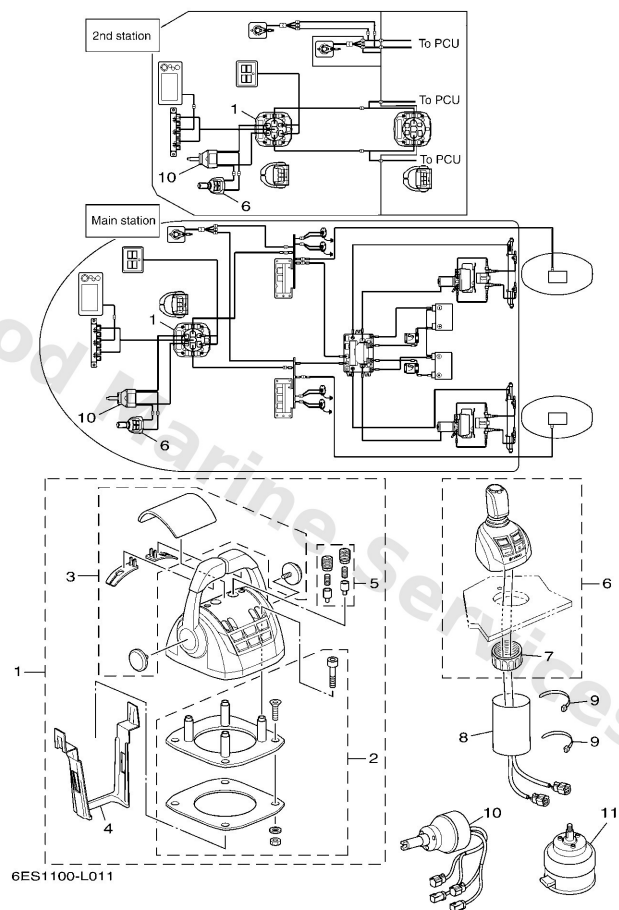
| Ref | Part  |                         |
|-----|---|-------------------------|
| 1   | <a href="#">6X68257090</a><br>Lanyard switch -2nd station | <a href="#">Buy now</a> |
| 2   | <a href="#">6X68257150</a><br>Panel, switch               | <a href="#">Buy now</a> |
| 3   | <a href="#">6828255600</a><br>Lanyard, stop switch        | <a href="#">Buy now</a> |
| 4   | <a href="#">6ES8258A30</a><br>Lanyard Harness 6P          | <a href="#">Buy now</a> |
| 5   | <a href="#">6ES8258A20</a><br>Lanyard Harness 2P          | <a href="#">Buy now</a> |
| 6   | <a href="#">6ES8258A70</a><br>Lanyard Harness 2           | <a href="#">Buy now</a> |

## Remocon. & Joystick (Triple)



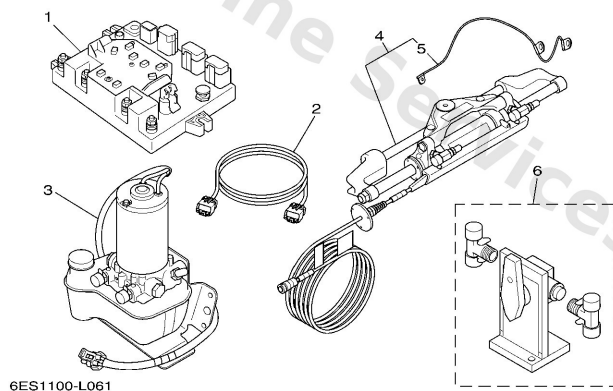
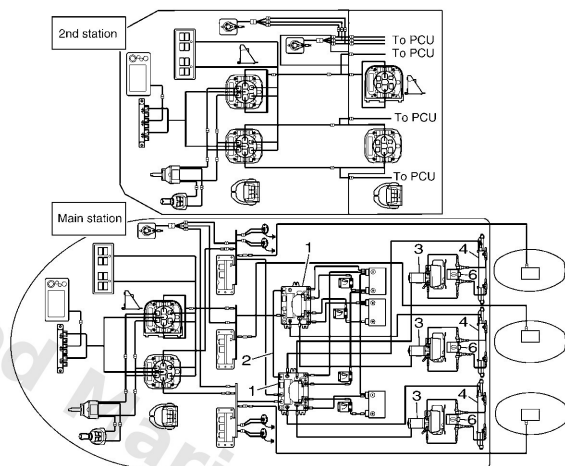
| Ref | Part   |                         |
|-----|--|-------------------------|
| 1   | <a href="#">6ES4820701</a><br>Remote Control assembly<br>ASK TO MARINE DIV | <a href="#">Buy now</a> |
| 2   | <a href="#">6ES4829100</a><br>Attachment                                   | <a href="#">Buy now</a> |
| 3   | <a href="#">6ES4811900</a><br>Cover set                                    | <a href="#">Buy now</a> |
| 4   | <a href="#">6ES4835400</a><br>Set-plate, cable                             | <a href="#">Buy now</a> |
| 5   | <a href="#">6ES4823700</a><br>Adaptor set                                  | <a href="#">Buy now</a> |
| 6   | <a href="#">6ES482A000</a><br>Joystick assembly<br>ASK TO MARINE DIV       | <a href="#">Buy now</a> |
| 7   | <a href="#">6ES4815600</a><br>Nut 1  | <a href="#">Buy now</a> |
| 8   | <a href="#">6ES8259900</a><br>Cover, connector                             | <a href="#">Buy now</a> |
| 9   | <a href="#">9046514M66</a><br>Clamp  | <a href="#">Buy now</a> |
| 10  | <a href="#">6ES615A000</a><br>Helm Unit assembly<br>ASK TO MARINE DIV      | <a href="#">Buy now</a> |
| 11  | <a href="#">6ES6154A00</a><br>Tilt Helm Unit                               | <a href="#">Buy now</a> |
| 12  | <a href="#">6ES8559000</a><br>Center hcu (helm c<br>ASK TO MARINE DIV      | <a href="#">Buy now</a> |

## Remocon. & Joystick (Twin)



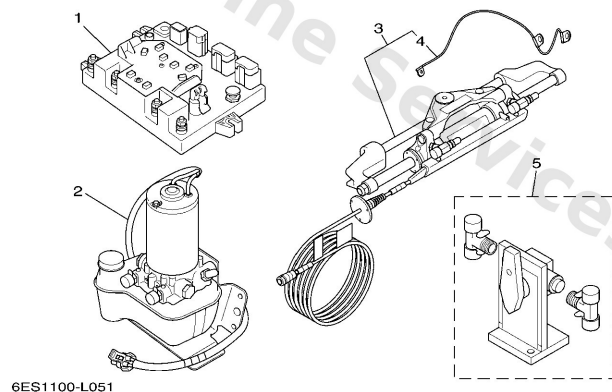
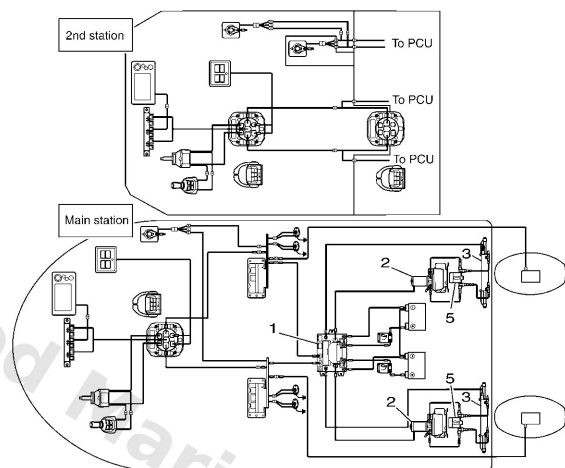
| Ref | Part   |                         |
|-----|--|-------------------------|
| 1   | <a href="#">6ES4820701</a><br>Remote Control assembly<br>ASK TO MARINE DIV | <a href="#">Buy now</a> |
| 2   | <a href="#">6ES4829100</a><br>Attachment                                   | <a href="#">Buy now</a> |
| 3   | <a href="#">6ES4811900</a><br>Cover set                                    | <a href="#">Buy now</a> |
| 4   | <a href="#">6ES4835400</a><br>Set-plate, cable                             | <a href="#">Buy now</a> |
| 5   | <a href="#">6ES4823700</a><br>Adaptor set                                  | <a href="#">Buy now</a> |
| 6   | <a href="#">6ES482A000</a><br>Joystick assembly<br>ASK TO MARINE DIV       | <a href="#">Buy now</a> |
| 7   | <a href="#">6ES4815600</a><br>Nut 1  | <a href="#">Buy now</a> |
| 8   | <a href="#">6ES8259900</a><br>Cover, connector                             | <a href="#">Buy now</a> |
| 9   | <a href="#">9046514M66</a><br>Clamp  | <a href="#">Buy now</a> |
| 10  | <a href="#">6ES615A000</a><br>Helm Unit assembly<br>ASK TO MARINE DIV      | <a href="#">Buy now</a> |
| 11  | <a href="#">6ES6154A00</a><br>Tilt Helm Unit                               | <a href="#">Buy now</a> |

## Steering Kit (Triple)



| Ref | Part  |                         |
|-----|---|-------------------------|
| 1   | <a href="#">6ES859A000</a><br>Scu<br>ASK TO MARINE DIV                    | <a href="#">Buy now</a> |
| 2   | <a href="#">6ES8111510</a><br>Scu Link Cable                              | <a href="#">Buy now</a> |
| 3   | <a href="#">6ES7611A00</a><br>Steering Pump assembly<br>ASK TO MARINE DIV | <a href="#">Buy now</a> |
| 4   | <a href="#">6ES4240100</a><br>Power Steering Cyl<br>ASK TO MARINE DIV     | <a href="#">Buy now</a> |
| 5   | <a href="#">6ES8131Y00</a><br>Wire, earth lead                            | <a href="#">Buy now</a> |
| 6   | <a href="#">6ES1334000</a><br>Steering Bypass Valve assembly              | <a href="#">Buy now</a> |

## Steering Kit (Twin)



6ES1100-L051

| Ref | Part  |                         |
|-----|---|-------------------------|
| 1   | <a href="#">6ES859A000</a><br>Scu<br>ASK TO MARINE DIV                    | <a href="#">Buy now</a> |
| 2   | <a href="#">6ES7611A00</a><br>Steering Pump assembly<br>ASK TO MARINE DIV | <a href="#">Buy now</a> |
| 3   | <a href="#">6ES4240100</a><br>Power Steering Cyl<br>ASK TO MARINE DIV     | <a href="#">Buy now</a> |
| 4   | <a href="#">6ES8131Y00</a><br>Wire, earth lead                            | <a href="#">Buy now</a> |
| 5   | <a href="#">6ES1334000</a><br>Steering Bypass Valve assembly              | <a href="#">Buy now</a> |

# Disclaimer

This document is provided for convenience only. It is **not** an official Yamaha publication and is **not supplied, endorsed, or approved** by Yamaha Motor Co., Ltd.

Reasonable efforts are made to keep information accurate; however diagrams, part references, supersessions, descriptions, and applicability may contain errors or omissions. Specifications and part availability may change without notice.

You are responsible for confirming the correct parts for your engine (including model code, year, serial range, and any superseded part numbers) before ordering or fitting.