



Yamaha Helm Master Joystick Controller System 2017

Parts Manual

www.floodmarine.co.uk

+44 2882 246 539

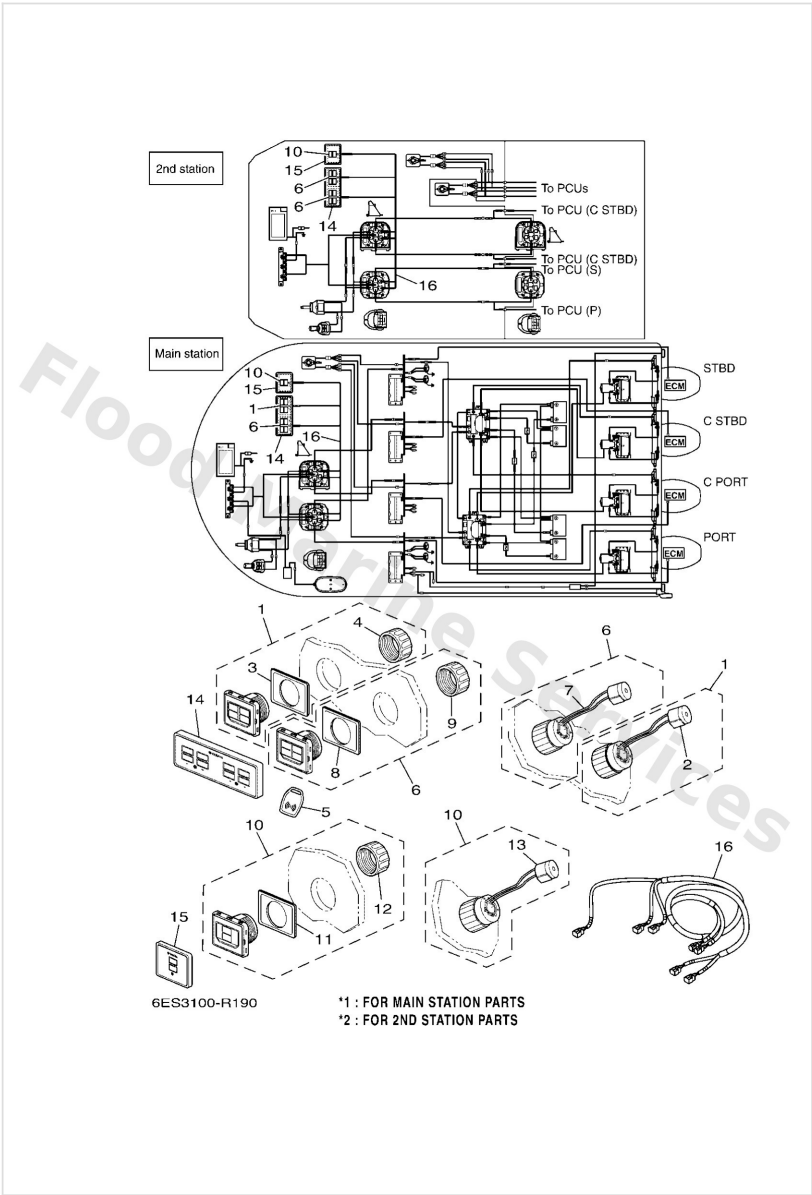
Authorised Yamaha Dealers



Contents

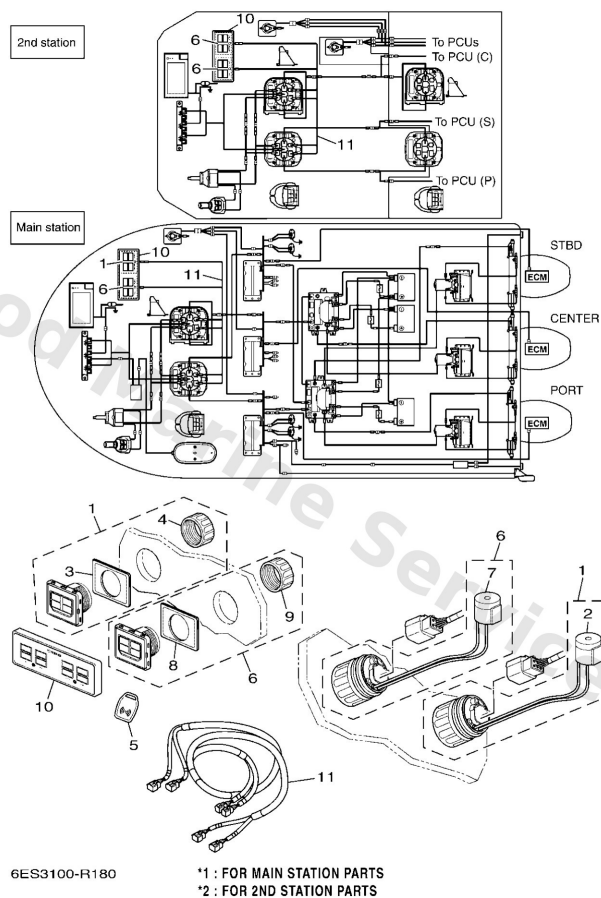
| | |
|---|----|
| EKS ASSY (QUAD) | 3 |
| EKS ASSY (TRIPLE) | 4 |
| EKS ASSY (TWIN) | 5 |
| HARNESS (QUAD) | 6 |
| HARNESS (TRIPLE) | 8 |
| HARNESS (TWIN) | 10 |
| MULTI DISPLAY | 11 |
| MULTI DISPLAY (QUAD) | 12 |
| MULTI DISPLAY (TRIPLE) | 13 |
| MULTI DISPLAY (TWIN) | 14 |
| OPTIONAL PARTS | 15 |
| PANEL SWITCH (QUAD) | 17 |
| PANEL SWITCH (TRIPLE) | 18 |
| PANEL SWITCH (TWIN) | 19 |
| REMOCON. & JOYSTICK (QUAD) | 20 |
| REMOCON. & JOYSTICK (TRIPLE) | 21 |
| REMOCON. & JOYSTICK (TWIN) | 22 |
| STEERING KIT (QUAD) | 23 |
| STEERING KIT (TRIPLE) | 24 |
| STEERING KIT (TWIN) | 25 |

Eks Assy (Quad)



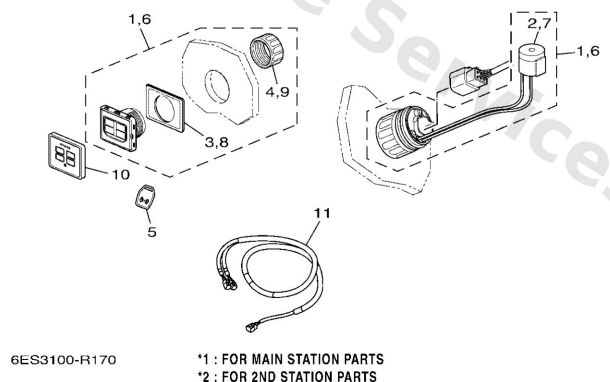
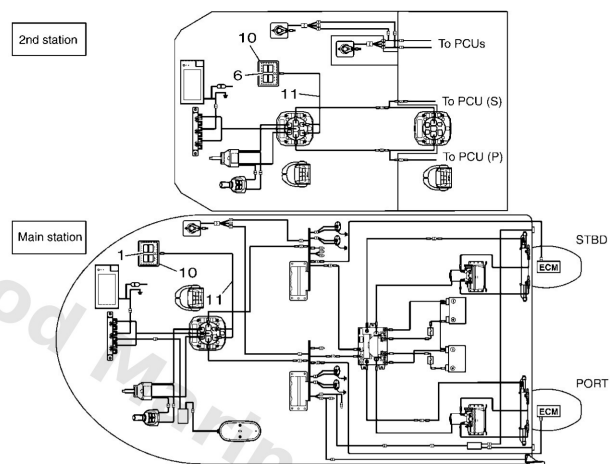
| Ref | Part | |
|-----|--|-------------------------|
| 1 | 6ES8251012 Eks assembly Without Ek Fob *1 ASK TO MARINE DIV | Buy now |
| 2 | 6ES8338300 Buzzer | Buy now |
| 3 | 6ES8254300 Gasket | Buy now |
| 4 | 6ES4815600 Nut 1 | Buy now |
| 5 | 6ES8251100 Key, main switch *1 ASK TO MARINE DIV | Buy now |
| 10 | 6ES8251022 Main switch assembly ASK TO MARINE DIV | Buy now |
| 14 | 6ES8256820 Eks cover (quad) | Buy now |
| 15 | 6ES8256830 Eks cover (quad all) | Buy now |
| 16 | 6ES8258A60 Eks Harness (Quad) | Buy now |

Eks Assy (Triple)



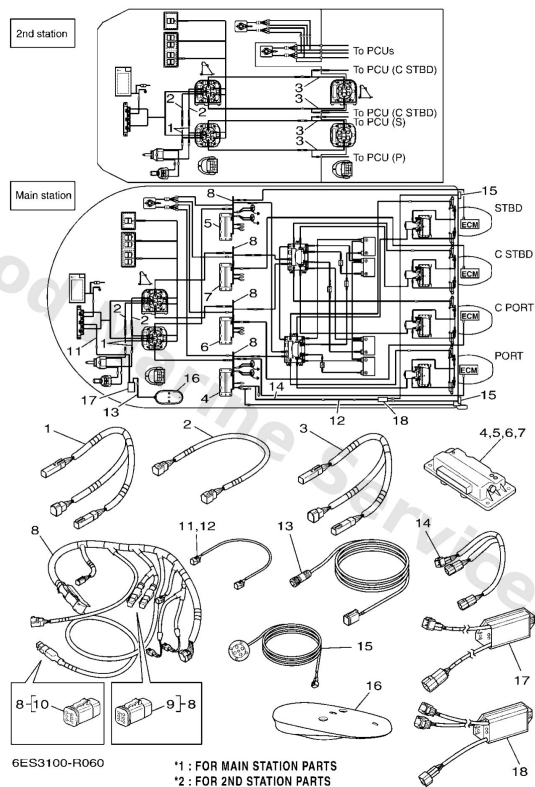
| Ref | Part | |
|-----|--|-------------------------|
| 1 | 6ES8251012 Eks assembly Without Ek Fob *1 ASK TO MARINE DIV | Buy now |
| 2 | 6ES8338300 Buzzer | Buy now |
| 3 | 6ES8254300 Gasket | Buy now |
| 4 | 6ES4815600 Nut 1 | Buy now |
| 5 | 6ES8251100 Key, main switch *1 ASK TO MARINE DIV | Buy now |
| 10 | 6ES8256810 Eks Cover (Triple) | Buy now |
| 11 | 6ES8258A51 Eks harness (triple) | Buy now |

Eks Assy (Twin)



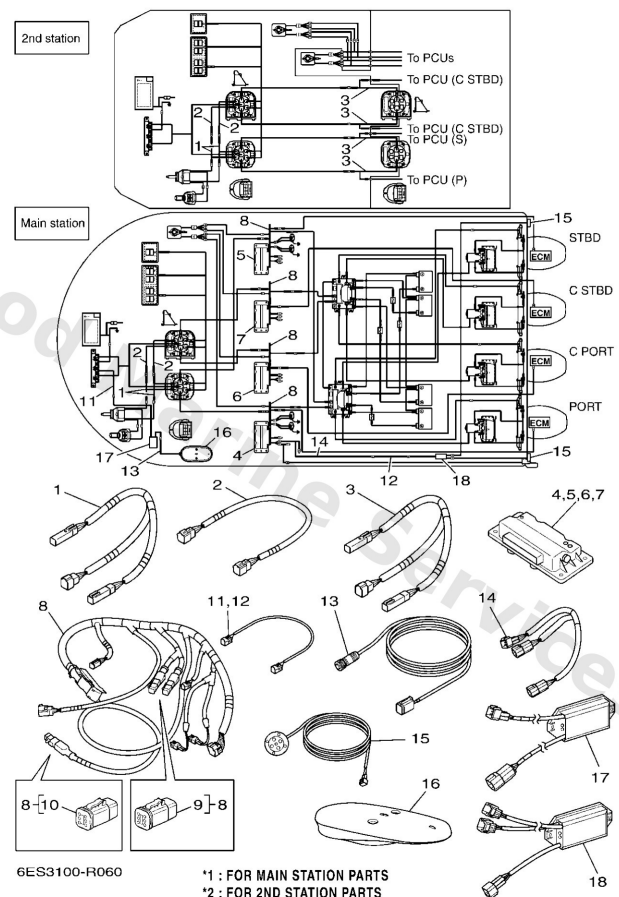
| Ref | Part | |
|-----|--|-------------------------|
| 1 | 6ES8251012 Eks assembly Without Ek Fob *1 ASK TO MARINE DIV | Buy now |
| 2 | 6ES8338300 Buzzer | Buy now |
| 3 | 6ES8254300 Gasket | Buy now |
| 4 | 6ES4815600 Nut 1 | Buy now |
| 5 | 6ES8251100 Key, main switch *1 ASK TO MARINE DIV | Buy now |
| 10 | 6ES8256800 Eks cover (twin) | Buy now |
| 11 | 6ES8258A40 Eks harness (twin) | Buy now |

Harness (Quad)



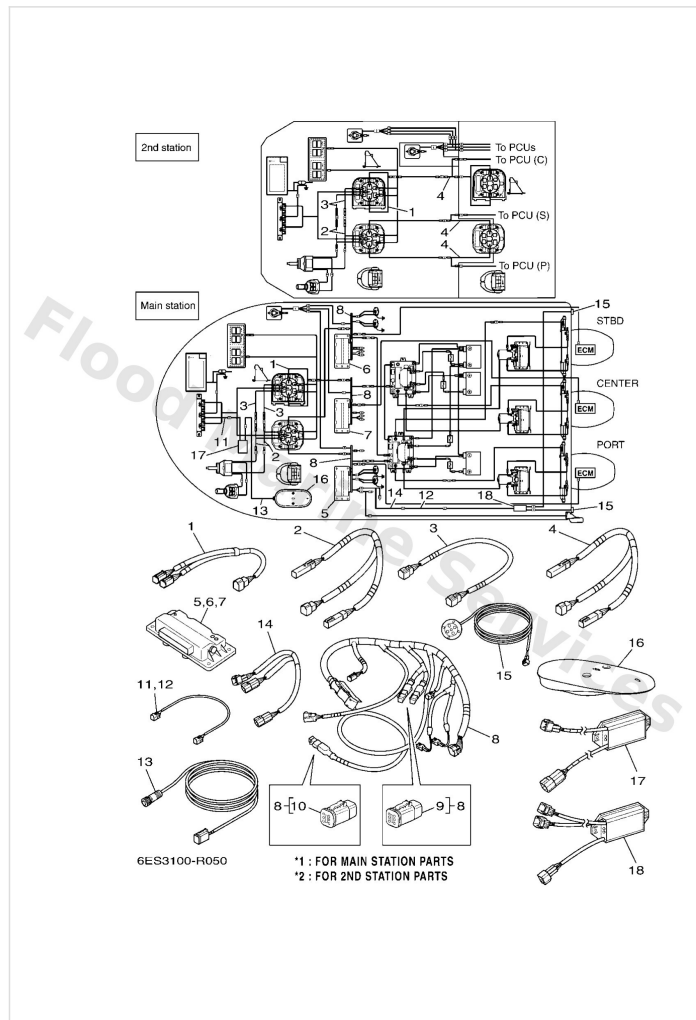
| Ref | Part | |
|-----|---|-------------------------|
| 1 | 6ES8259000 Helm "T" Harness For Triple | Buy now |
| 2 | 6ES82590A0 Helm Adapter Harness (Triple) | Buy now |
| 3 | 6ES8258A80 T harness, 2nd station *2 | Buy now |
| 4 | 6ES8559060 Pcu (quad/port) *1 ASK TO MARINE DIV | Buy now |
| 5 | 6ES8559070 Pcu (quad/stbd) *1 ASK TO MARINE DIV | Buy now |
| 6 | 6ES8559080 Pcu (quad/ptc) *1 ASK TO MARINE DIV | Buy now |
| 7 | 6ES8559090 Pcu (quad/sbc) *1 ASK TO MARINE DIV | Buy now |
| 8 | 6ES8258A00 Pcu Harness *1 ASK TO MARINE DIV | Buy now |
| 9 | 6ES8258200 Cap 1 | Buy now |
| 10 | 6ES8258500 Cap 2 | Buy now |
| 11 | 6Y88252111 Pigtail bus wire 0.6m-2ft *1 | Buy now |
| 13 | 6ES8271800 Resistor harness *1 | Buy now |
| 14 | 6ES82590C0 Prop. light interface harness *1 | Buy now |
| 15 | 6ES8372000 L.e.d ass'y *1 | Buy now |
| 16 | 6ES8810700 Gps Antenna *1 ASK TO MARINE DIV | Buy now |

Harness (Quad)



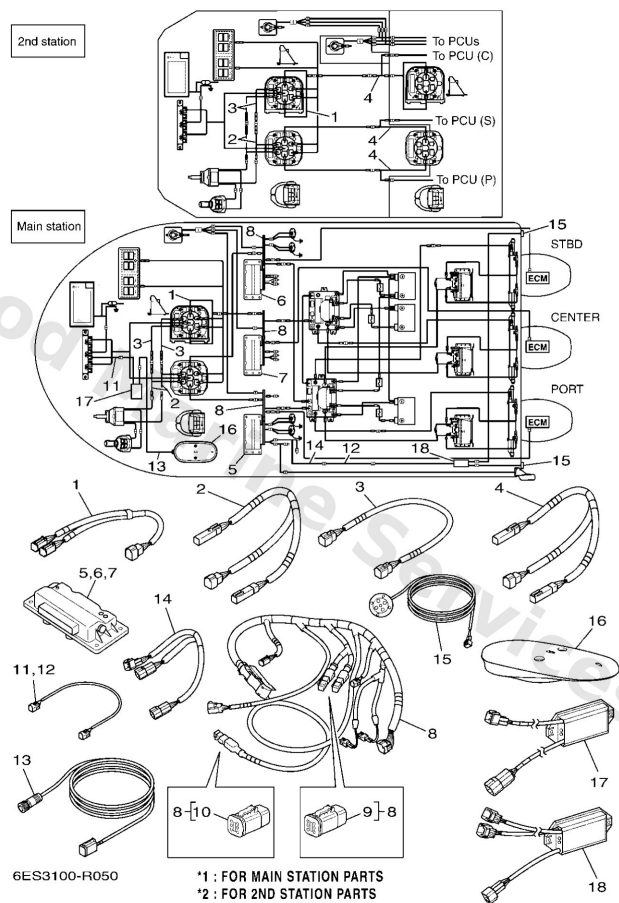
| Ref | Part | |
|-----|---|-------------------------|
| 17 | 6ES8A2D010 Gps gateway *1 | Buy now |
| 18 | 6ES8A2D000 Prop. light interface *1 | Buy now |

Harness (Triple)



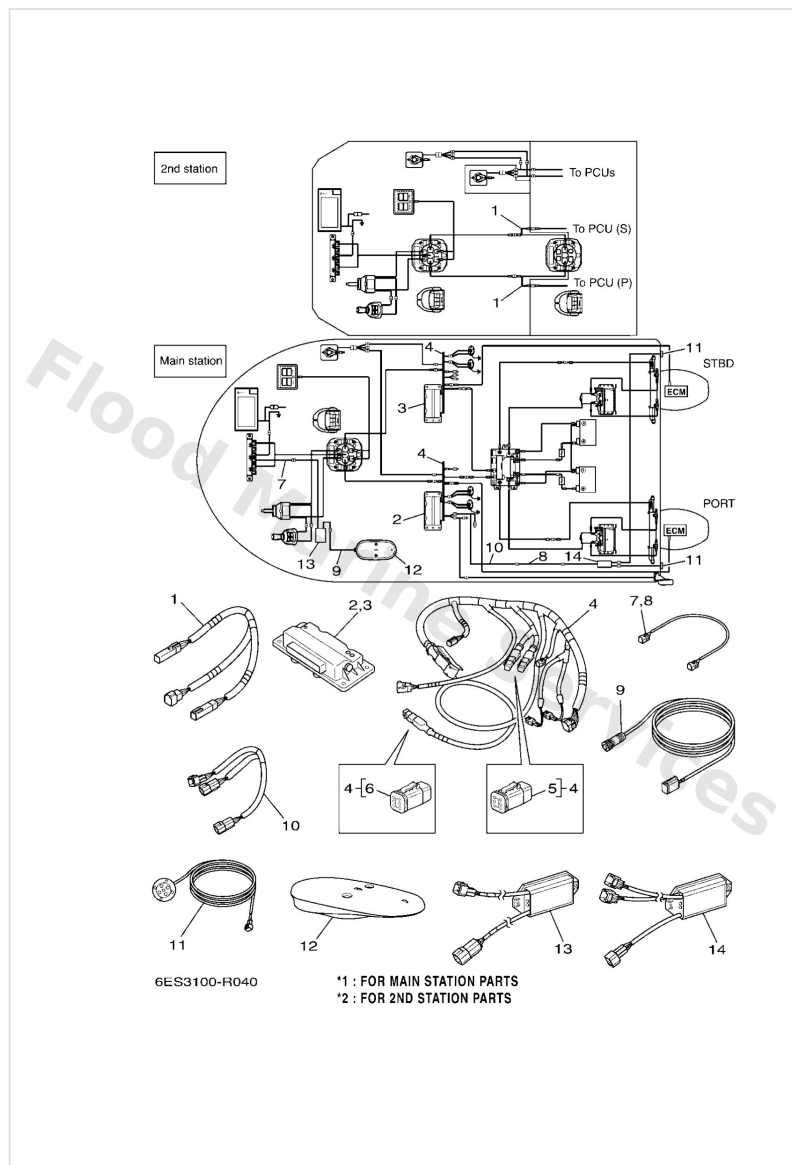
| Ref | Part | |
|-----|---|-------------------------|
| 1 | 6ES8259020 Center Hcu Harness | Buy now |
| 2 | 6ES8259000 Helm "T" Harness For Triple | Buy now |
| 3 | 6ES82590A0 Helm Adapter Harness (Triple) | Buy now |
| 4 | 6ES8258A80 T harness, 2nd station *2 | Buy now |
| 5 | 6ES8559030 Pcu for triple, port side *1 ASK TO MARINE DIV | Buy now |
| 6 | 6ES8559040 Pcu for triple, stbd side *1 ASK TO MARINE DIV | Buy now |
| 7 | 6ES8559050 Pcu For Triple Center *1 ASK TO MARINE DIV | Buy now |
| 8 | 6ES8258A00 Pcu Harness *1 ASK TO MARINE DIV | Buy now |
| 9 | 6ES8258200 Cap 1 | Buy now |
| 10 | 6ES8258500 Cap 2 | Buy now |
| 11 | 6Y88252111 Pigtail bus wire 0.6m-2ft *1 | Buy now |
| 13 | 6ES8271800 Resistor harness *1 | Buy now |
| 14 | 6ES82590C0 Prop. light interface harness *1 | Buy now |
| 15 | 6ES8372000 L.e.d ass'y *1 | Buy now |
| 16 | 6ES8810700 Gps Antenna *1 ASK TO MARINE DIV | Buy now |

Harness (Triple)



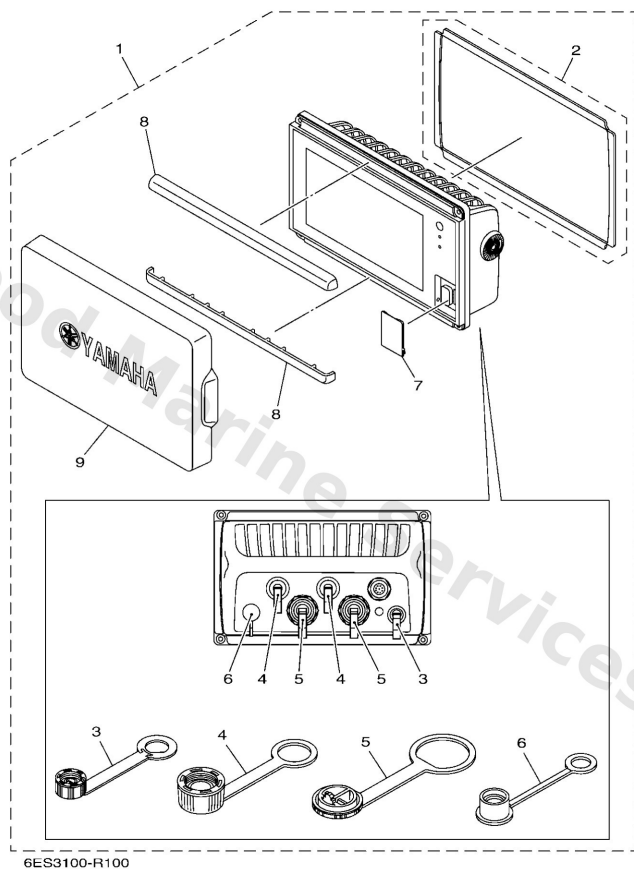
| Ref | Part | |
|-----|---|-------------------------|
| 17 | 6ES8A2D010 Gps gateway *1 | Buy now |
| 18 | 6ES8A2D000 Prop. light interface *1 | Buy now |

Harness (Twin)



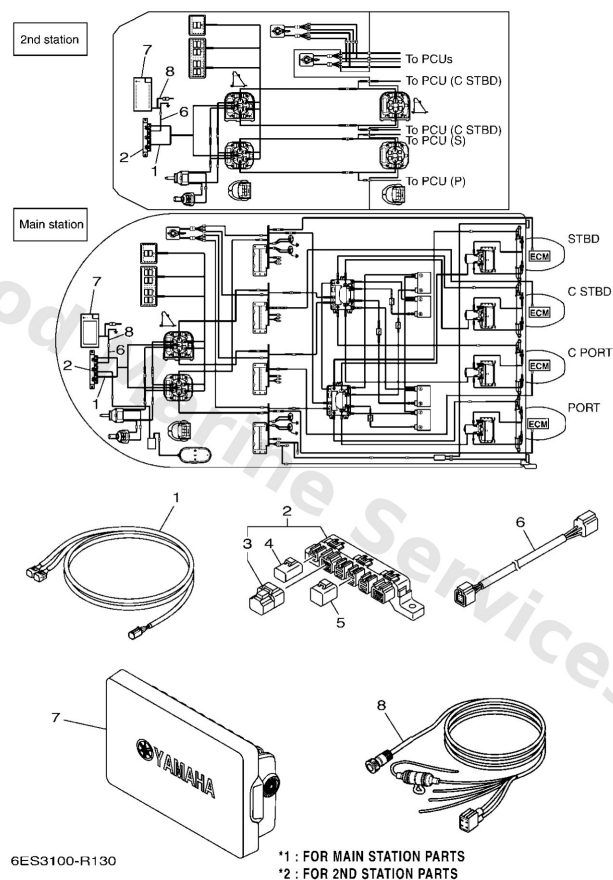
| Ref | Part | |
|-----|---|-------------------------|
| 1 | 6ES8258A80 T harness, 2nd station *2 | Buy now |
| 2 | 6ES8559010 Pcu for twin, port side *1 ASK TO MARINE DIV | Buy now |
| 3 | 6ES8559020 Pcu For Twin Stbd Side *1 ASK TO MARINE DIV | Buy now |
| 4 | 6ES8258A00 Pcu Harness *1 ASK TO MARINE DIV | Buy now |
| 5 | 6ES8258200 Cap 1 | Buy now |
| 6 | 6ES8258500 Cap 2 | Buy now |
| 7 | 6Y88252111 Pigtail bus wire 0.6m-2ft *1 | Buy now |
| 9 | 6ES8271800 Resistor harness *1 | Buy now |
| 10 | 6ES82590C0 Prop. light interface harness *1 | Buy now |
| 11 | 6ES8372000 L.e.d ass'y *1 | Buy now |
| 12 | 6ES8810700 Gps Antenna *1 ASK TO MARINE DIV | Buy now |
| 13 | 6ES8A2D010 Gps gateway *1 | Buy now |
| 14 | 6ES8A2D000 Prop. light interface *1 | Buy now |

Multi Display



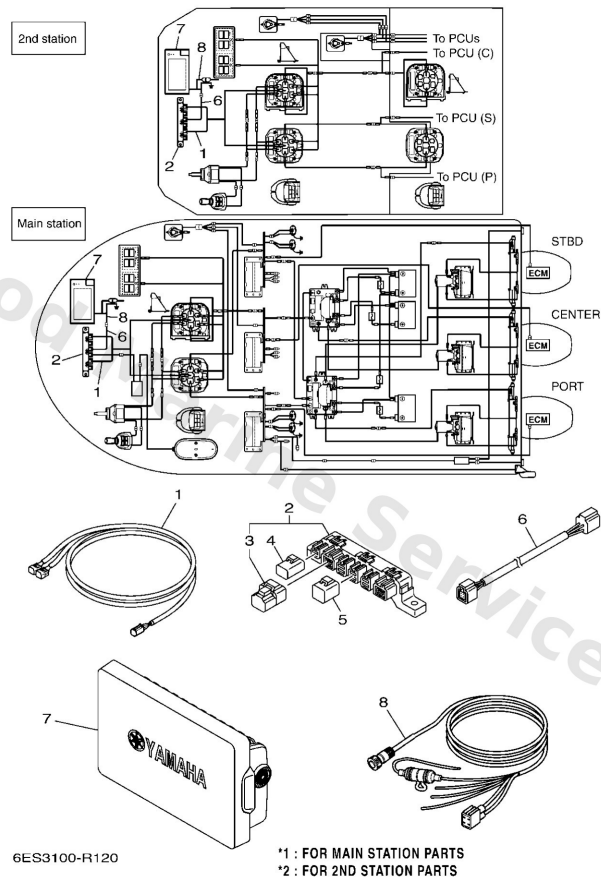
| Ref | Part | |
|-----|---|-------------------------|
| 1 | 6YD8371000 6Yd Touch Panel Gauge | Buy now |
| 2 | 6YD2248000 Seal assembly | Buy now |
| 3 | 6YD8395600 Cap 1 | Buy now |
| 4 | 6YD8395700 Cap 2 | Buy now |
| 5 | 6YD8395800 Cap 3 | Buy now |
| 6 | 6YD8253200 Cap | Buy now |
| 7 | 6YD6572200 Door | Buy now |
| 8 | 6YD8351200 Ring, speed meter | Buy now |
| 9 | 6YD8727800 Cover, meter | Buy now |

Multi Display (Quad)



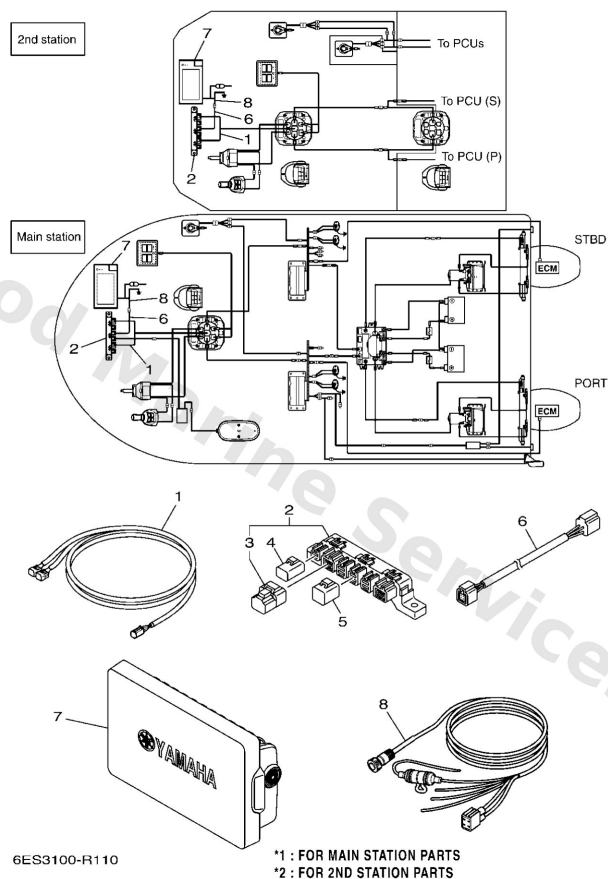
| Ref | Part | |
|-----|--|-------------------------|
| 1 | 6ES8355371 Remote ctr-hub harness, 3&4 | Buy now |
| 2 | 6Y88192001 Multi-hub | Buy now |
| 3 | 6Y88537101 End of line resister | Buy now |
| 4 | 6Y88258201 Red cap 1 (2pin) | Buy now |
| 5 | 6Y88258211 White cap 1 (4pin) *1 | Buy now |
| 6 | 6Y88252111 Pigtail bus wire 0.6m-2ft | Buy now |
| 7 | 6YD8371000 6Yd Touch Panel Gauge REFER TO FIG.10 | Buy now |
| 8 | 6YD8355300 Wire, lead | Buy now |

Multi Display (Triple)



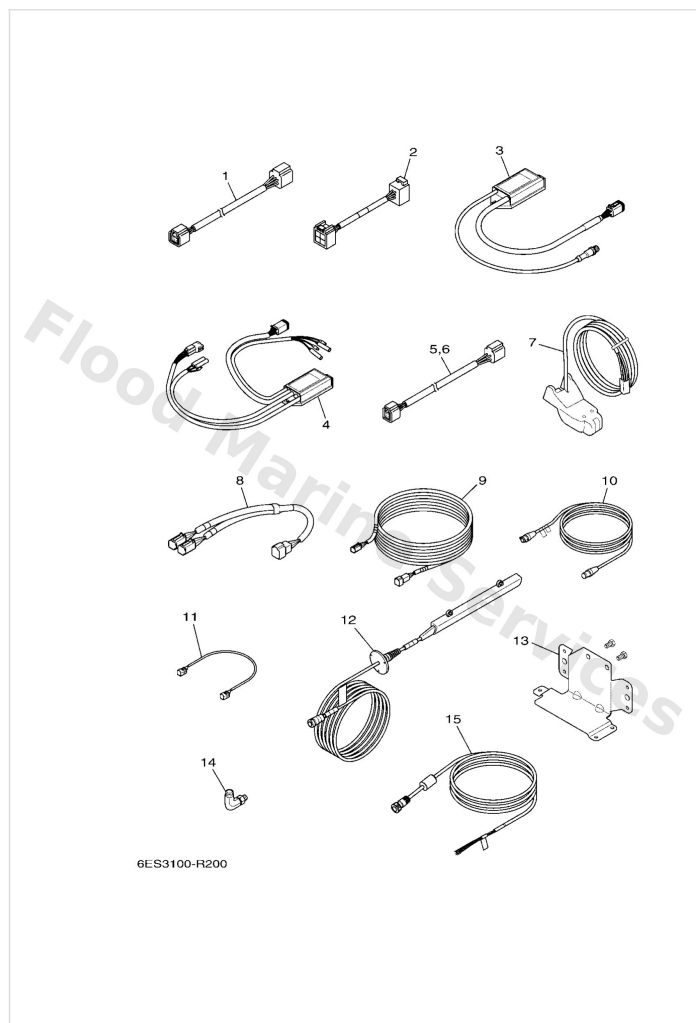
| Ref | Part | |
|-----|--|-------------------------|
| 1 | 6ES8355371 Remote ctr-hub harness, 3&4 | Buy now |
| 2 | 6Y88192001 Multi-hub | Buy now |
| 3 | 6Y88537101 End of line resister | Buy now |
| 4 | 6Y88258201 Red cap 1 (2pin) | Buy now |
| 5 | 6Y88258211 White cap 1 (4pin) *1 | Buy now |
| 6 | 6Y88252111 Pigtail bus wire 0.6m-2ft | Buy now |
| 7 | 6YD8371000 6Yd Touch Panel Gauge REFER TO FIG.10 | Buy now |
| 8 | 6YD8355300 Wire, lead | Buy now |

Multi Display (Twin)



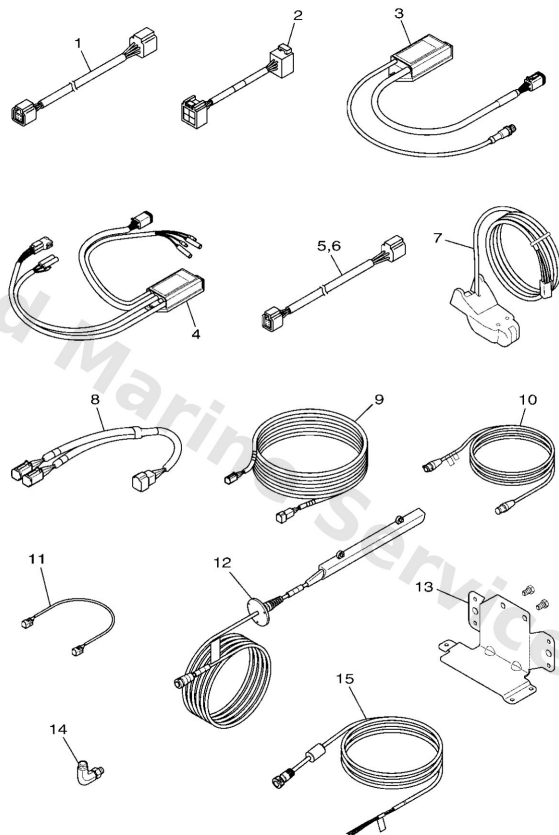
| Ref | Part | |
|-----|--|-------------------------|
| 1 | 6ES8355360 Remote Ctr-Hub Har ASK TO MARINE DIV | Buy now |
| 2 | 6Y88192001 Multi-hub | Buy now |
| 3 | 6Y88537101 End of line resister | Buy now |
| 4 | 6Y88258201 Red cap 1 (2pin) | Buy now |
| 5 | 6Y88258211 White cap 1 (4pin) *1 | Buy now |
| 6 | 6Y88252111 Pigtail bus wire 0.6m-2ft | Buy now |
| 7 | 6YD8371000 6Yd Touch Panel Gauge REFER TO FIG.10 | Buy now |
| 8 | 6YD8355300 Wire, lead | Buy now |

Optional Parts



| Ref | Part | |
|-----|--|-------------------------|
| 1 | 6Y88255301 Main bus wire 0.3m-1ft | Buy now |
| 2 | 6Y98355350 Wire, lead FOR INTERFACE UNIT | Buy now |
| 3 | 6Y98A2D040 Interface Unit | Buy now |
| 4 | 6Y98A2D030 Analog gauge interface ANALOGUE GAUGE | Buy now |
| 5 | 6Y88252101 1ft pigtail bus | Buy now |
| 6 | 6Y88252121 Pigtail bus wire 0.9m-3ft UR | Buy now |
| 6 | 6Y88252131 Pigtail bus wire 1.8m-6ft UR | Buy now |
| 6 | 6Y88252141 9ft pigtail bus UR | Buy now |
| 6 | 6Y88252151 Pigtail bus wire 3.6m-12ft UR | Buy now |
| 7 | 6Y98368800 Sensor assembly | Buy now |
| 8 | 6ES82590B0 Wire Harness assembly | Buy now |
| 9 | 6ES8259010 Hcu-Pcu Harness (34Ft/11M) UR | Buy now |
| 9 | 6ES8259030 Hcu-Pcu Harness (10Ft/3M) UR | Buy now |
| 9 | 6ES8259050 Hcu-Pcu Harness (23Ft/7M) UR | Buy now |
| 9 | 6ES8259070 Hcu-Pcu Harness (5Ft/1.5M) UR | Buy now |

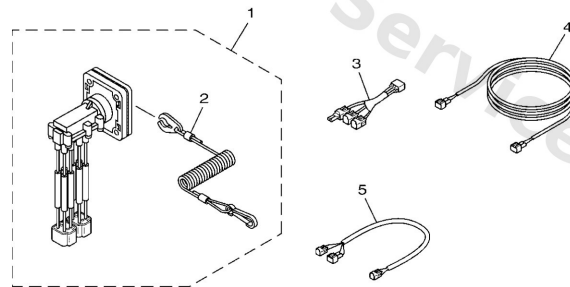
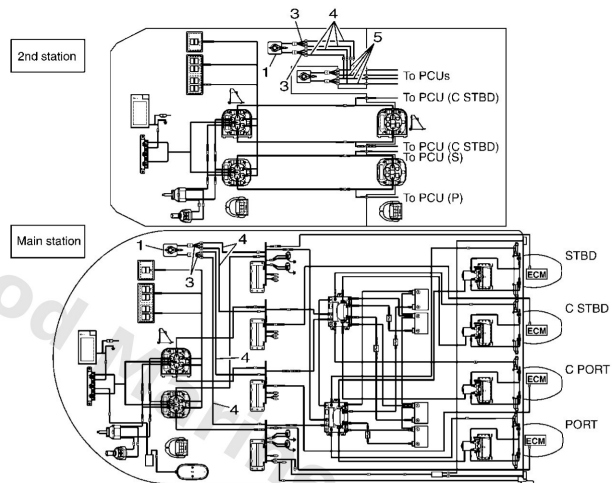
Optional Parts



6ES3100-R200

| Ref | Part | |
|-----|---|-------------------------|
| 10 | 6ES8258A90 Extension Wire Ha UR | Buy now |
| 10 | 6ES8258AA0 Extension Wire Ha UR | Buy now |
| 10 | 6ES8258AB0 Extension Wire Ha UR | Buy now |
| 11 | 6ES8258AC0 Extension , pcu harness 3.5ft | Buy now |
| 12 | 6ES8368800 Derc multisensor (triducer) | Buy now |
| 13 | 6ES1330200 Pump Plate Complet | Buy now |
| 14 | 6ES8213300 Screw Fitting | Buy now |
| 15 | 6YD8356N00 Wire, lead | Buy now |

Panel Switch (Quad)

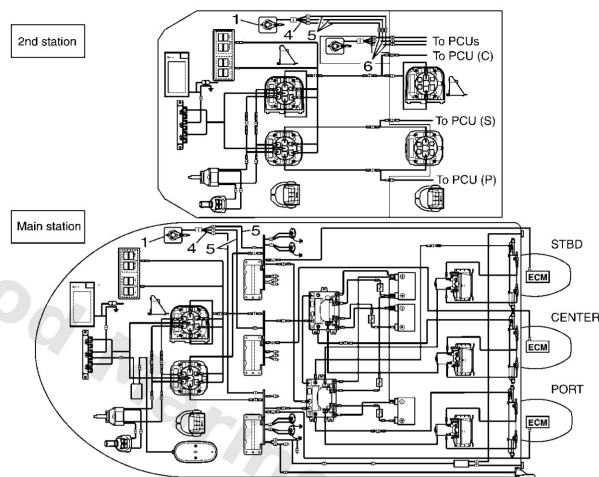


6ES3100-R160

*1 : FOR 2ND STATION PARTS

| Ref | Part | |
|-----|---|-------------------------|
| 1 | 6ES8257000 Engine stop switch assembly (quad) | Buy now |
| 2 | 6828255600 Lanyard, stop switch | Buy now |
| 3 | 6ES8258A31 Lanyard Harness 6P ASK TO MARINE DIV | Buy now |
| 4 | 6ES8258A20 Lanyard Harness 2P ASK TO MARINE DIV | Buy now |
| 5 | 6ES8258A70 Lanyard Harness 2 *1 | Buy now |

Panel Switch (Triple)

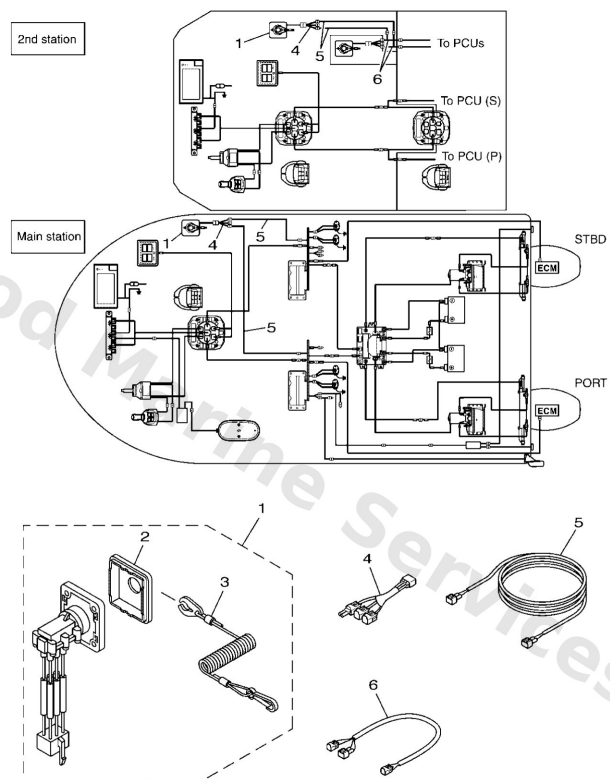


6ES3100-R150

*1 : FOR 2ND STATION PARTS

| Ref | Part | |
|-----|---|-------------------------|
| 1 | 6X68257090 Lanyard switch -2nd station | Buy now |
| 2 | 6X68257150 Panel, switch | Buy now |
| 3 | 6828255600 Lanyard, stop switch | Buy now |
| 4 | 6ES8258A31 Lanyard Harness 6P ASK TO MARINE DIV | Buy now |
| 5 | 6ES8258A20 Lanyard Harness 2P ASK TO MARINE DIV | Buy now |
| 6 | 6ES8258A70 Lanyard Harness 2 *1 | Buy now |

Panel Switch (Twin)

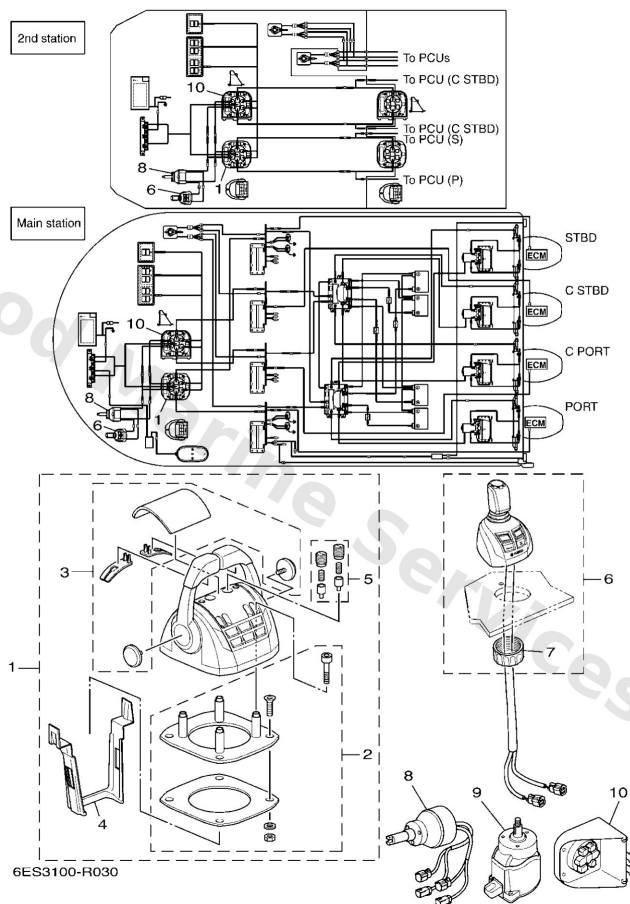


6ES3100-R140

*1 : FOR 2ND STATION PARTS

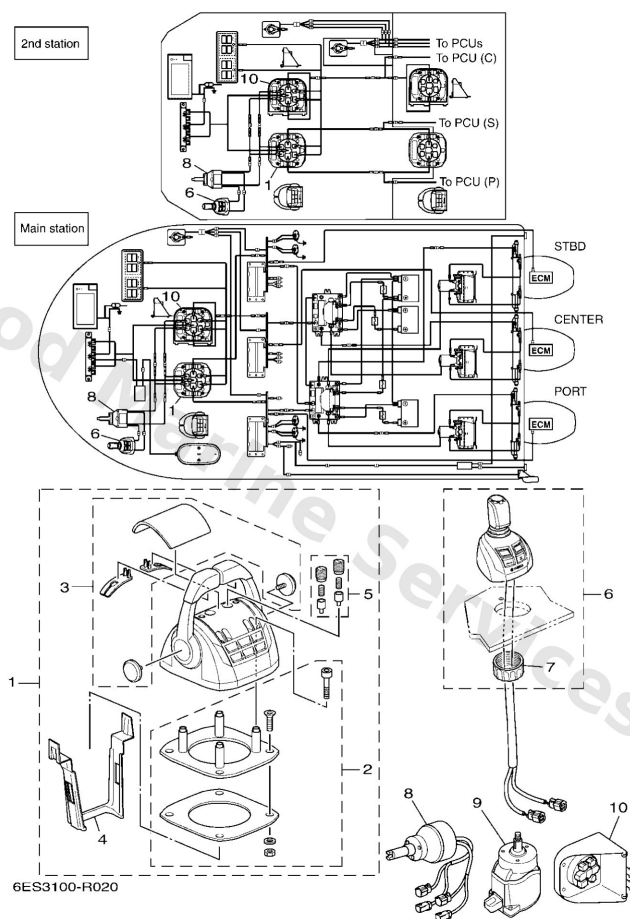
| Ref | Part | |
|-----|---|-------------------------|
| 1 | 6X68257090 Lanyard switch -2nd station | Buy now |
| 2 | 6X68257150 Panel, switch | Buy now |
| 3 | 6828255600 Lanyard, stop switch | Buy now |
| 4 | 6ES8258A31 Lanyard Harness 6P ASK TO MARINE DIV | Buy now |
| 5 | 6ES8258A20 Lanyard Harness 2P ASK TO MARINE DIV | Buy now |
| 6 | 6ES8258A70 Lanyard Harness 2 *1 | Buy now |

Remocon. & Joystick (Quad)



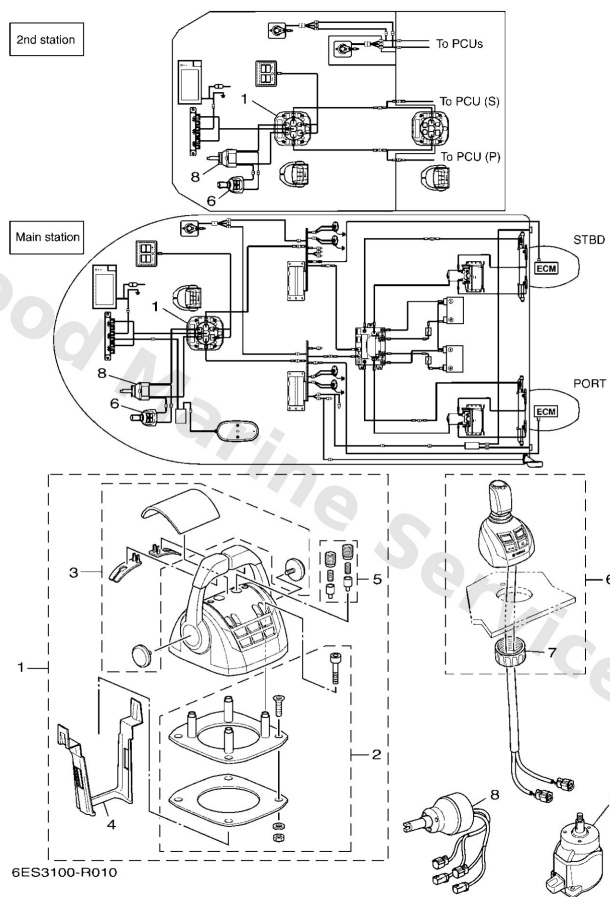
| Ref | Part | |
|-----|--|-------------------------|
| 1 | 6ES4820702 Remote Control assembly ASK TO MARINE DIV | Buy now |
| 2 | 6ES4829100 Attachment | Buy now |
| 3 | 6ES4811900 Cover set | Buy now |
| 4 | 6ES4835400 Set-plate, cable | Buy now |
| 5 | 6ES4823700 Adaptor set | Buy now |
| 6 | 6ES482A010 Joystick assembly (Set Point) ASK TO MARINE DIV | Buy now |
| 7 | 6ES4815600 Nut 1 | Buy now |
| 8 | 6ES615A000 Helm Unit assembly ASK TO MARINE DIV | Buy now |
| 9 | 6ES6154A10 Tilt Helm Unit | Buy now |
| 10 | 6ES8559002 Center hcu (helm c ASK TO MARINE DIV | Buy now |

Remocon. & Joystick (Triple)



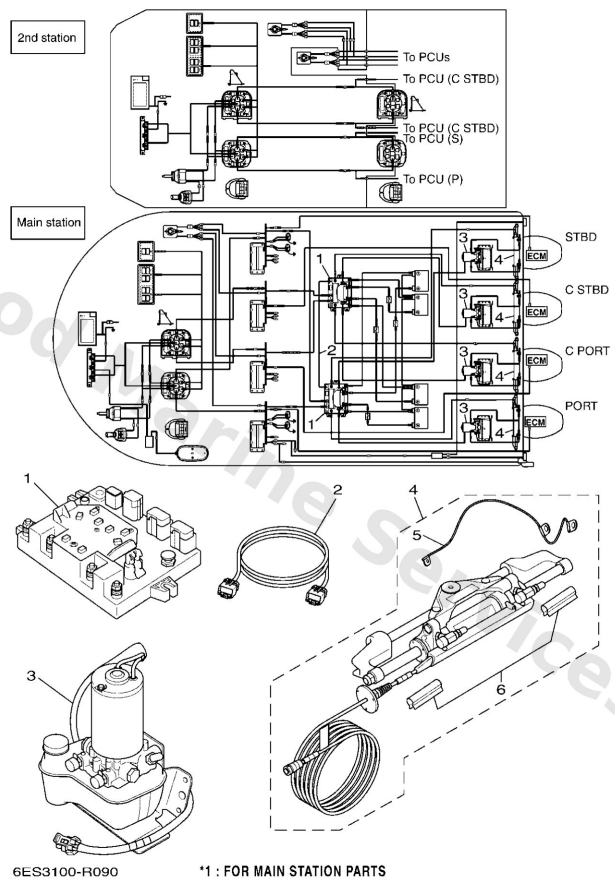
| Ref | Part | |
|-----|--|-------------------------|
| 1 | 6ES4820702 Remote Control assembly ASK TO MARINE DIV | Buy now |
| 2 | 6ES4829100 Attachment | Buy now |
| 3 | 6ES4811900 Cover set | Buy now |
| 4 | 6ES4835400 Set-plate, cable | Buy now |
| 5 | 6ES4823700 Adaptor set | Buy now |
| 6 | 6ES482A010 Joystick assembly (Set Point) ASK TO MARINE DIV | Buy now |
| 7 | 6ES4815600 Nut 1 | Buy now |
| 8 | 6ES615A000 Helm Unit assembly ASK TO MARINE DIV | Buy now |
| 9 | 6ES6154A10 Tilt Helm Unit | Buy now |
| 10 | 6ES8559002 Center hcu (helm c) ASK TO MARINE DIV | Buy now |

Remocon. & Joystick (Twin)



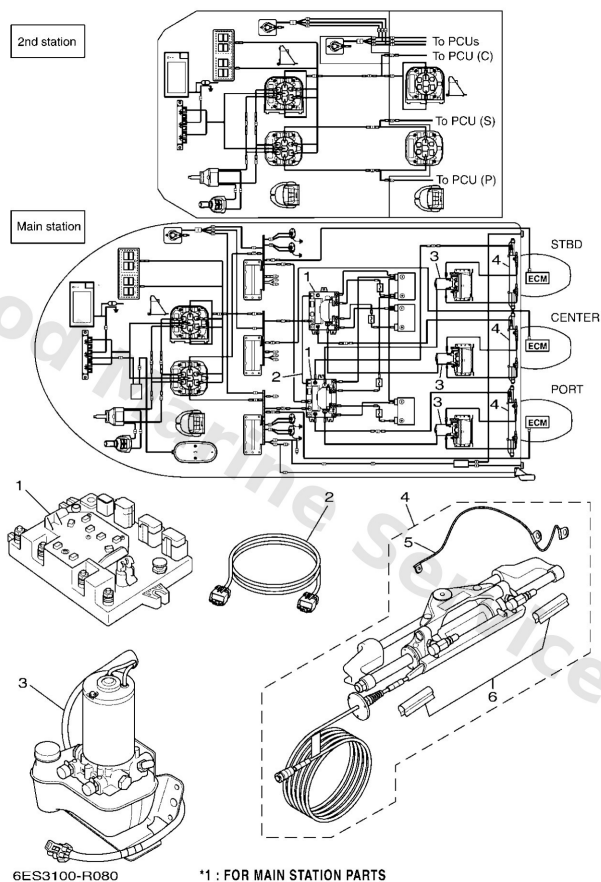
| Ref | Part | |
|-----|--|-------------------------|
| 1 | 6ES4820702 Remote Control assembly ASK TO MARINE DIV | Buy now |
| 2 | 6ES4829100 Attachment | Buy now |
| 3 | 6ES4811900 Cover set | Buy now |
| 4 | 6ES4835400 Set-plate, cable | Buy now |
| 5 | 6ES4823700 Adaptor set | Buy now |
| 6 | 6ES482A010 Joystick assembly (Set Point) ASK TO MARINE DIV | Buy now |
| 7 | 6ES4815600 Nut 1 | Buy now |
| 8 | 6ES615A000 Helm Unit assembly ASK TO MARINE DIV | Buy now |
| 9 | 6ES6154A10 Tilt Helm Unit | Buy now |

Steering Kit (Quad)



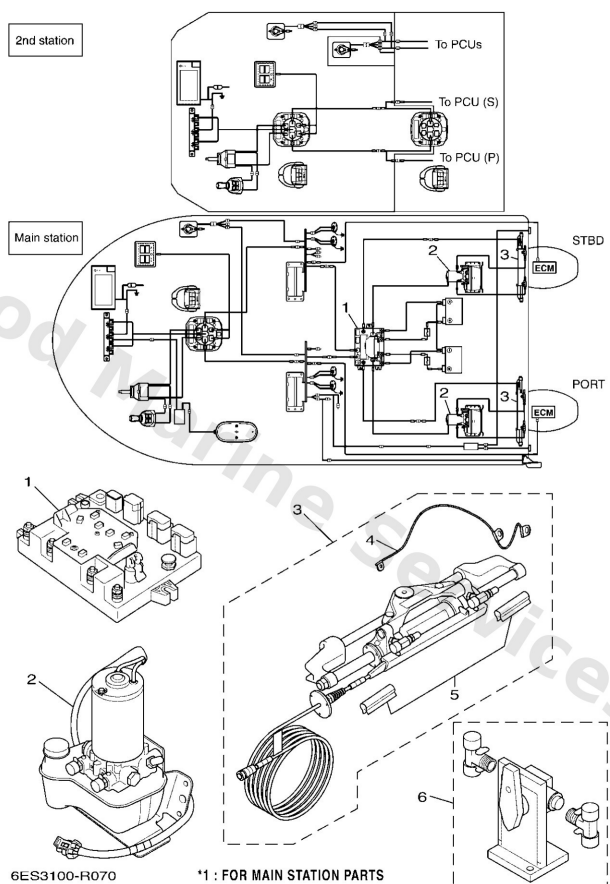
| Ref | Part | |
|-----|--|-------------------------|
| 1 | 6ES859A001 Scu *1 ASK TO MARINE DIV | Buy now |
| 2 | 6ES8111510 Scu Link Cable *1 | Buy now |
| 3 | 6ES7611A02 Steering Pump assembly *1 ASK TO MARINE DIV | Buy now |
| 4 | 6ES4240103 Power Steering Cyl *1 ASK TO MARINE DIV | Buy now |
| 5 | 6ES8131Y10 Wire, earth lead | Buy now |
| 6 | 6ES2332600 Steering Lock Clip ASK TO MARINE DIV | Buy now |

Steering Kit (Triple)



| Ref | Part | |
|-----|--|-------------------------|
| 1 | 6ES859A001 Scu *1 ASK TO MARINE DIV | Buy now |
| 2 | 6ES8111510 Scu Link Cable *1 | Buy now |
| 3 | 6ES7611A02 Steering Pump assembly *1 ASK TO MARINE DIV | Buy now |
| 4 | 6ES4240103 Power Steering Cyl *1 ASK TO MARINE DIV | Buy now |
| 5 | 6ES8131Y10 Wire, earth lead | Buy now |
| 6 | 6ES2332600 Steering Lock Clip ASK TO MARINE DIV | Buy now |

Steering Kit (Twin)



| Ref | Part | |
|-----|--|-------------------------|
| 1 | 6ES859A001 Scu *1 ASK TO MARINE DIV | Buy now |
| 2 | 6ES7611A02 Steering Pump assembly *1 ASK TO MARINE DIV | Buy now |
| 3 | 6ES4240103 Power Steering Cyl *1 ASK TO MARINE DIV | Buy now |
| 4 | 6ES8131Y10 Wire, earth lead | Buy now |
| 5 | 6ES2332600 Steering Lock Clip ASK TO MARINE DIV | Buy now |
| 6 | 6ES1334000 Steering Bypass Valve assembly AP ASK TO MARINE DIV | Buy now |

Disclaimer

This document is provided for convenience only. It is **not** an official Yamaha publication and is **not supplied, endorsed, or approved** by Yamaha Motor Co., Ltd.

Reasonable efforts are made to keep information accurate; however diagrams, part references, supersessions, descriptions, and applicability may contain errors or omissions. Specifications and part availability may change without notice.

You are responsible for confirming the correct parts for your engine (including model code, year, serial range, and any superseded part numbers) before ordering or fitting.