



Yamaha L130BETOL 1996

Parts Manual

www.floodmarine.co.uk

+44 2882 246 539

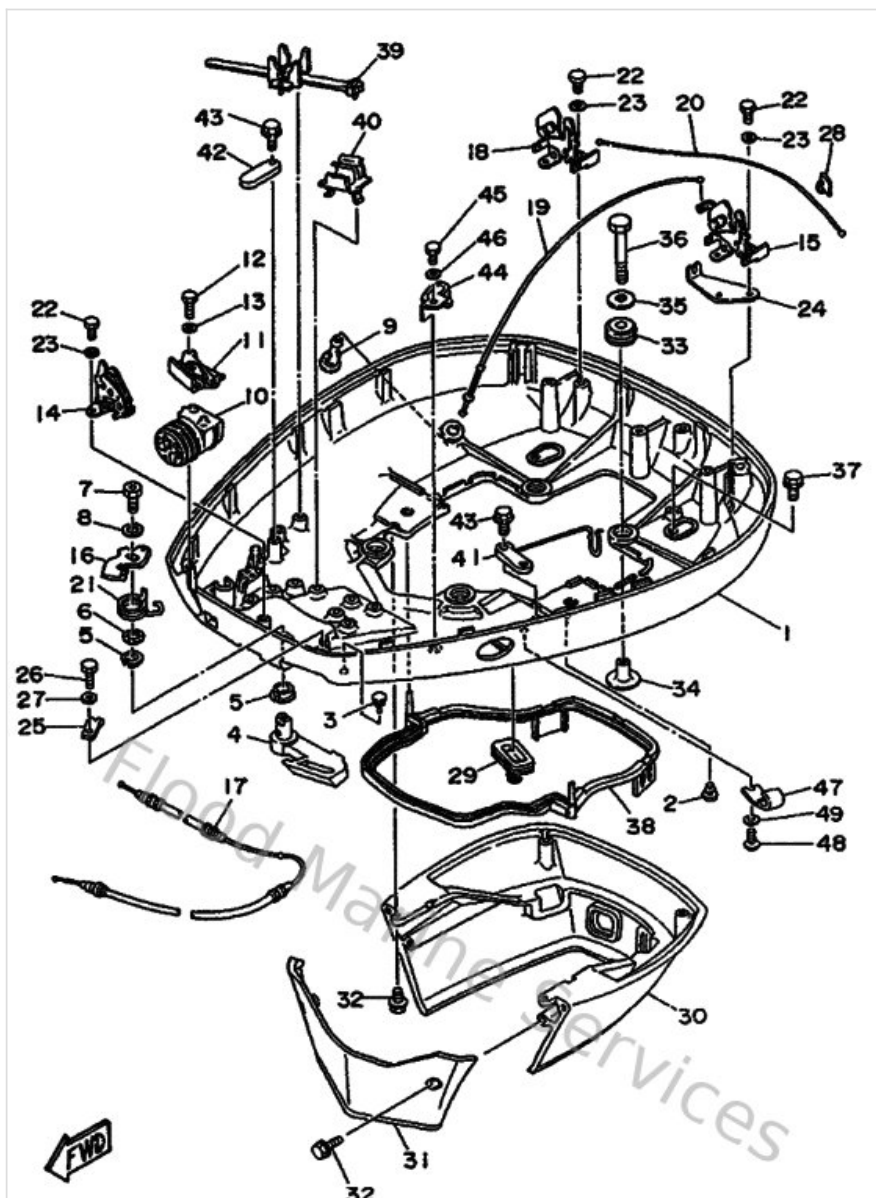
Authorised Yamaha Dealers



Contents

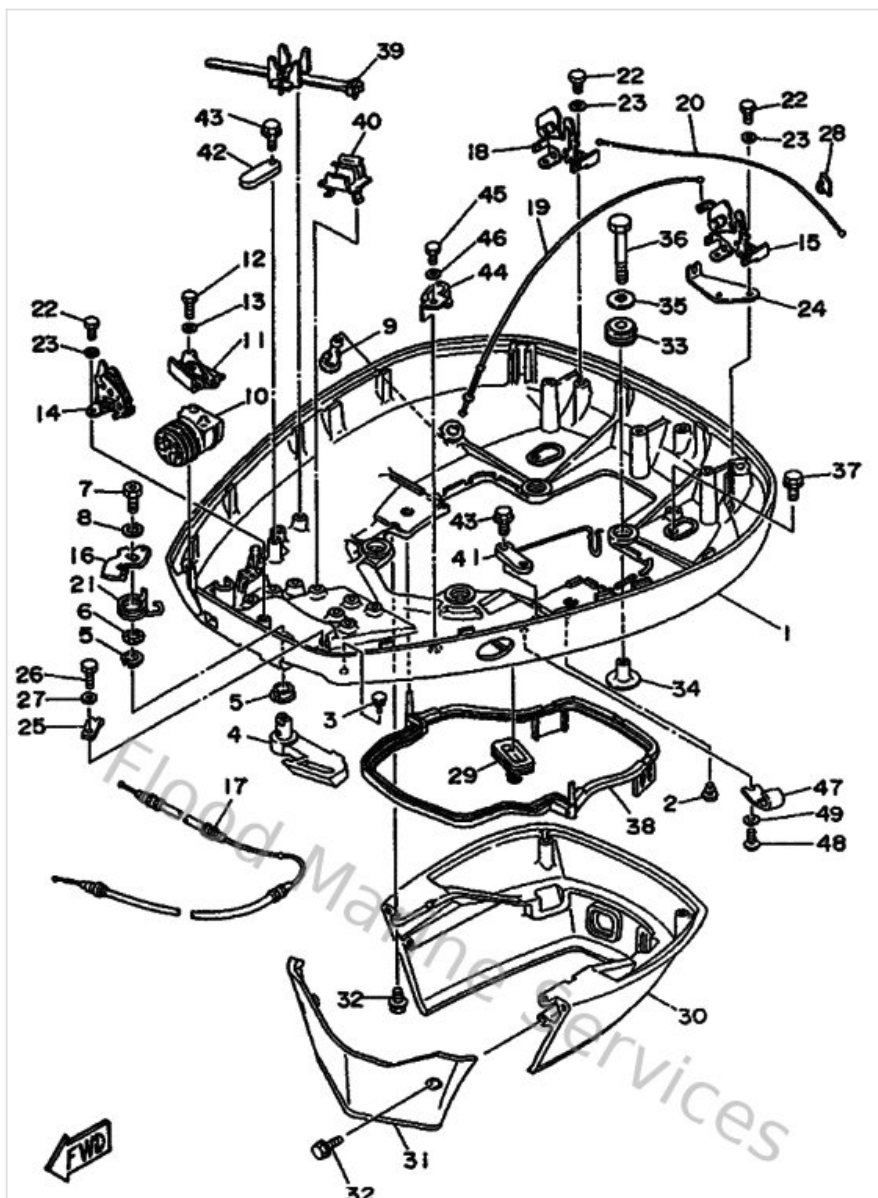
| | |
|-----------------------------------|----|
| Bottom Cowling | 3 |
| Bracket 1 | 5 |
| Bracket 2 | 6 |
| Carburetor | 7 |
| Control | 9 |
| Crankshaft & Piston | 11 |
| Cylinder & Crankcase 1 | 12 |
| Cylinder & Crankcase 2 | 13 |
| Demarreur Electrique | 15 |
| Fuel 1 | 17 |
| Fuel Tank | 19 |
| Generatrice | 21 |
| Intake | 22 |
| Kits De Reparation 1 | 24 |
| Kits De Reparation 2 | 26 |
| Lower Casing & Drive | 28 |
| Oil Pump | 32 |
| Optionnelles 1 | 33 |
| Optionnelles 2 | 36 |
| Partie Electrique 1 | 37 |
| Partie Electrique 2 | 38 |
| Power Trim & Tilt Assy | 40 |
| Top Cowling | 44 |
| Upper Casing | 45 |

Bottom Cowling



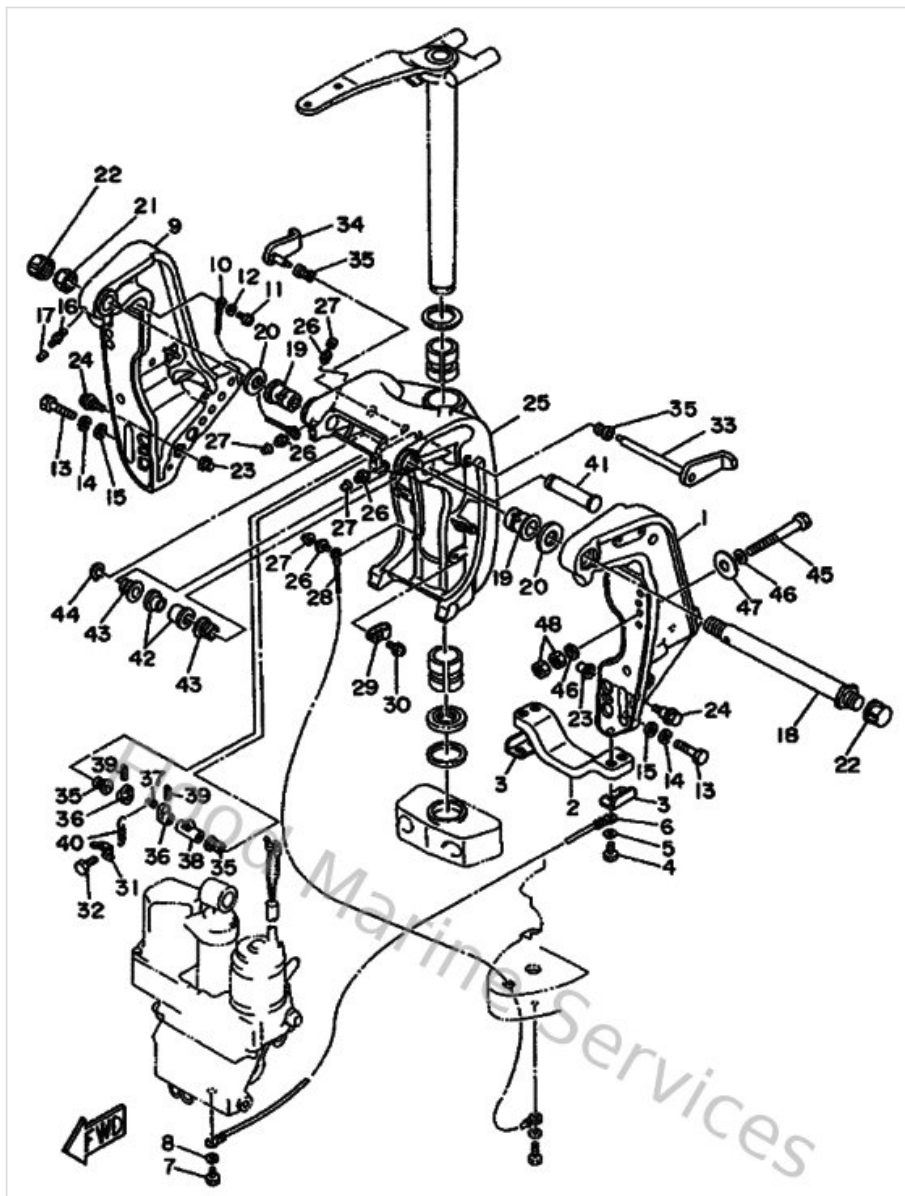
| Ref | Part | |
|-----|---|-------------------------|
| 1 | 6N742711438D Cowling, bottom | Buy now |
| 3 | 6H4427480000 Grommet | Buy now |
| 4 | 6N742815018D Lever, clamp | Buy now |
| 9 | 6E5443910000 Nipple, hose | Buy now |
| 10 | 6N7427252000 Grommet | Buy now |
| 11 | 6N742738028D Plate, fitting | Buy now |
| 14 | 6R3428240000 Base, clamp lever | Buy now |
| 15 | 6R3428110100 Stay | Buy now |
| 16 | 6R3428160000 Lever, clamp | Buy now |
| 17 | 6N7428500000 Wire, complete | Buy now |
| 18 | 6R3428111000 Stay | Buy now |
| 19 | 6N7428501000 Wire, complete | Buy now |
| 20 | 6N7428502000 Wire, complete | Buy now |
| 21 | 6R3428130000 Spring, clamp lever | Buy now |
| 24 | 6N7428280000 Plate, clamp | Buy now |

Bottom Cowling



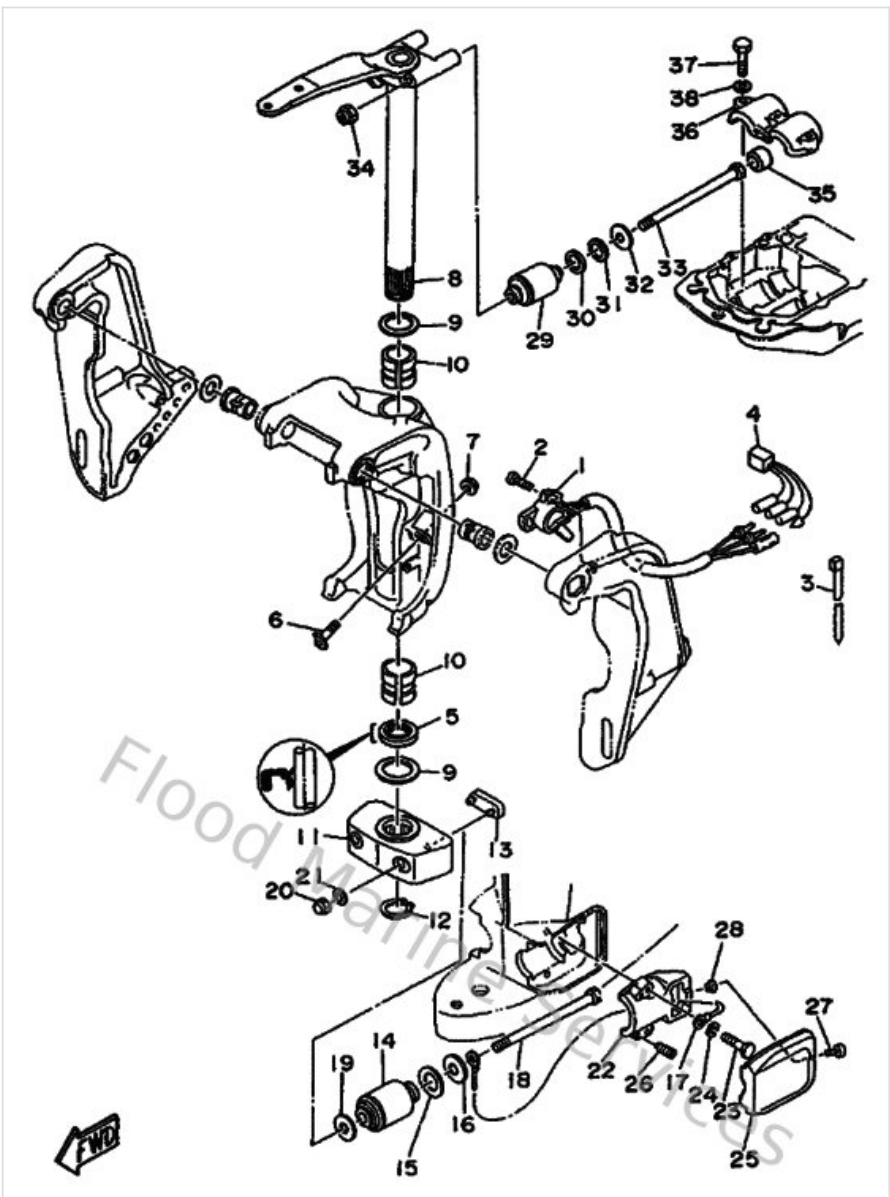
| Ref | Part | |
|-----|--|-------------------------|
| 25 | 6R3428280000 Plate, clamp | Buy now |
| 29 | 688427261000 Grommet | Buy now |
| 30 | 6N742741018D Apron | Buy now |
| 31 | 6R342771018D Apron | Buy now |
| 38 | 6E5427160000 Seal | Buy now |
| 39 | 688825940000 Clamp | Buy now |
| 40 | 6E5825940000 Clamp | Buy now |
| 41 | 6K7825880000 Plate | Buy now |
| 42 | 6E5825880000 Plate | Buy now |
| 47 | 6E5243671000 Clamp, fuel pipe 2 | Buy now |

Bracket 1



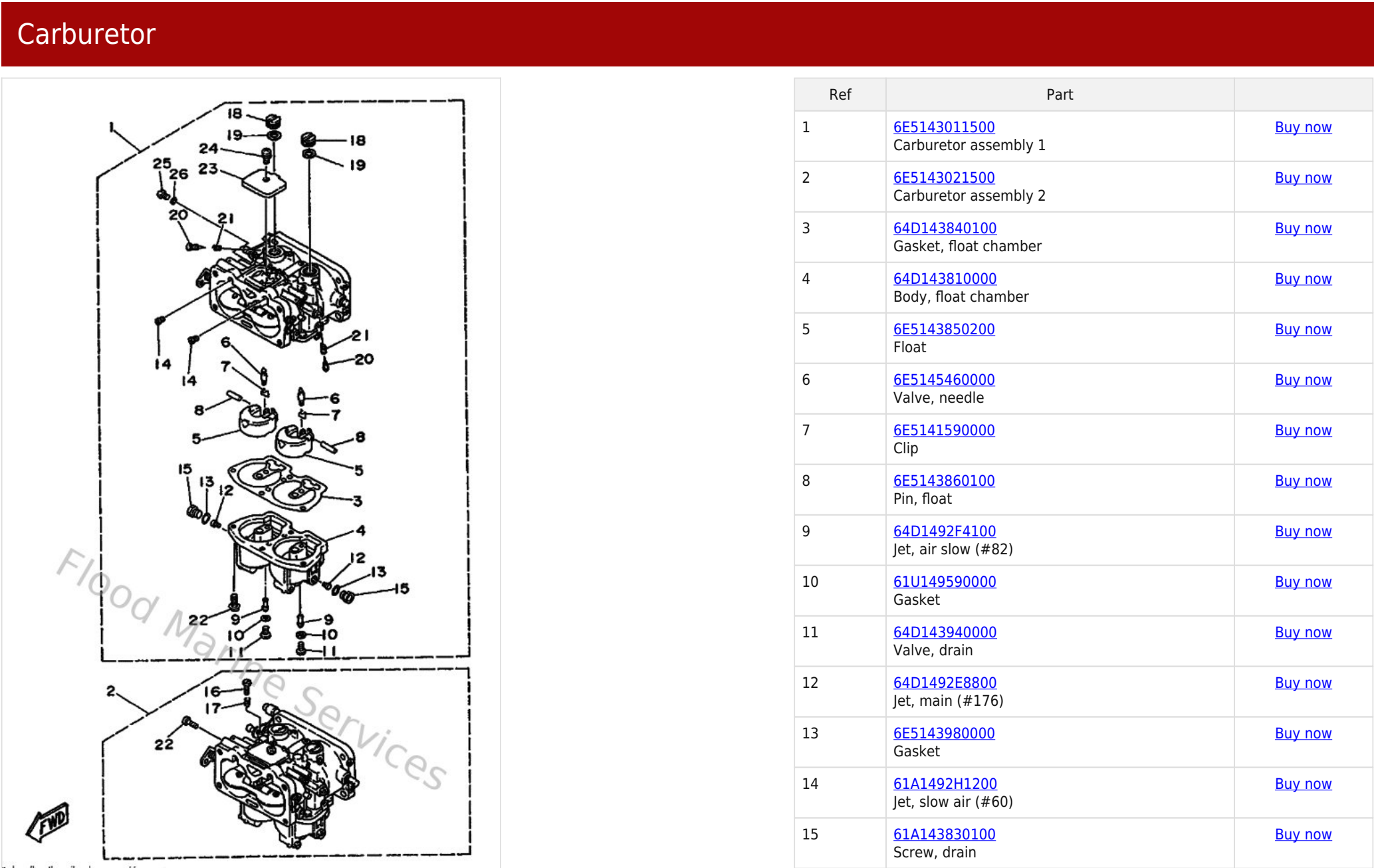
| Ref | Part | |
|-----|--|-------------------------|
| 2 | 6G5452510100 Anode | Buy now |
| 3 | 6G5445260000 Plate | Buy now |
| 6 | 6E5821480000 Wire, lead 5 | Buy now |
| 17 | 663451190000 Cap, grease nipple | Buy now |
| 18 | 6R3431310000 Bolt, clamp bracket | Buy now |
| 22 | 6G5431450000 Cap, clamp bracket | Buy now |
| 23 | 6G5431640000 Rod, Tilt Lock | Buy now |
| 28 | 6E5821470000 Wire, lead 5 | Buy now |
| 31 | 6G5431440000 Hook, spring | Buy now |
| 33 | 6G5431810200 Lever, tilt stop 1 | Buy now |
| 34 | 6G5431850200 Lever, tilt stop 2 | Buy now |
| 36 | 6G5431480000 Collar, distance | Buy now |
| 41 | 6E5431260200 Pin, upper shock mount | Buy now |

Bracket 2



| Ref | Part | |
|-----|---|-------------------------|
| 1 | 6R3836720100 Trim sender | Buy now |
| 4 | 6N7825410000 Wire, Lead | Buy now |
| 6 | 6G5433760000 Bolt, Thrust Receiver | Buy now |
| 8 | 6E542510D08D element | Buy now |
| 11 | 6G544551018D Housing, lower mount rubber | Buy now |
| 13 | 6E5445750000 Damper, lower mount rubber | Buy now |
| 14 | 6E5445550000 Mount damper, lower side | Buy now |
| 17 | 6E5821490000 Wire, lead 3 | Buy now |
| 22 | 6E5445520194 Housing, lower mount rubber | Buy now |
| 25 | 6E544553018D Cover, lower mount | Buy now |
| 29 | 6E5445140000 Mount damper, upper side | Buy now |
| 35 | 663445750000 Damper, lower mount rubber | Buy now |
| 36 | 6E544511005B Cover, upper mount | Buy now |

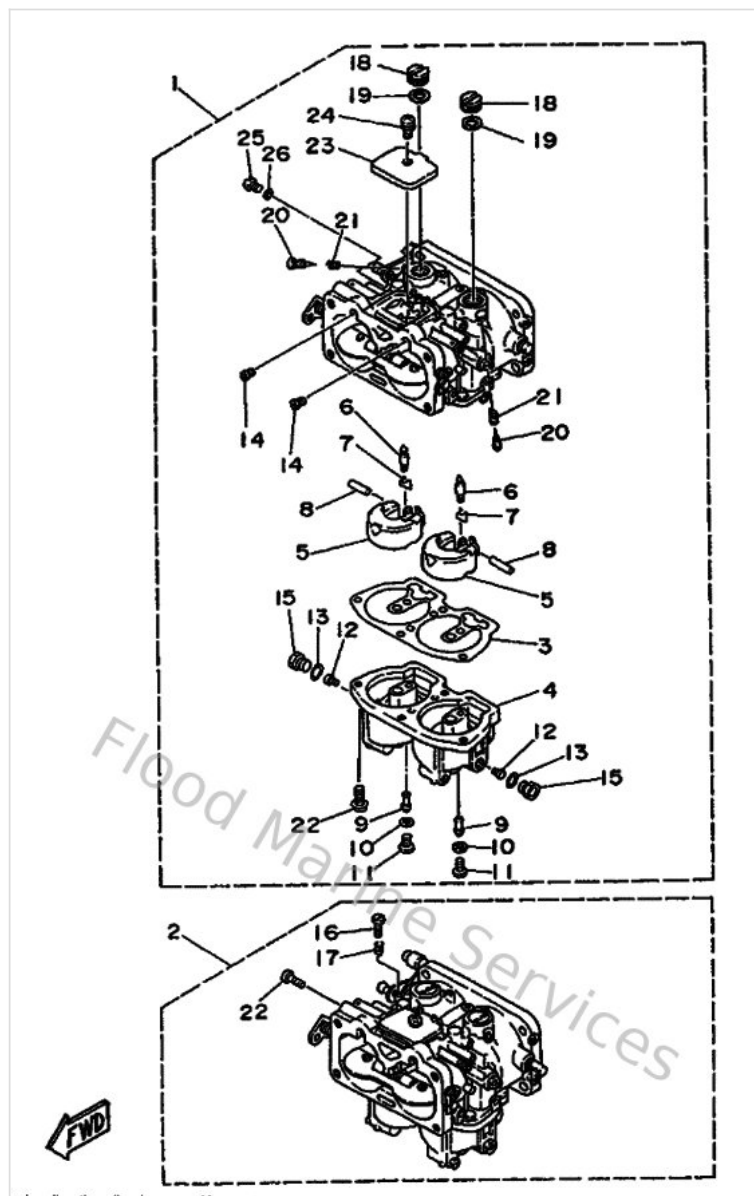
Carburetor



Carburetor

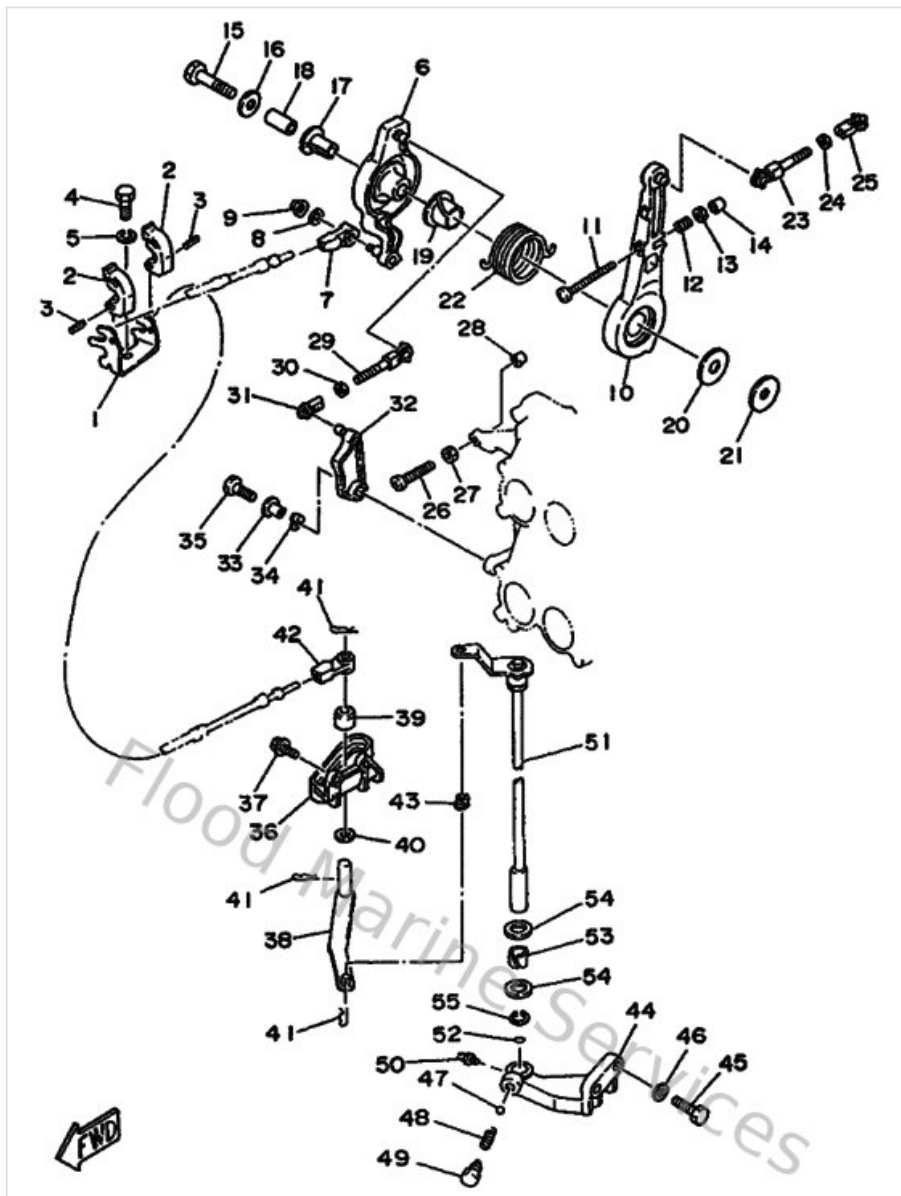
| Ref | Part | |
|-----|---|-------------------------|
| 1 | 6E5143011500 Carburetor assembly 1 | Buy now |
| 2 | 6E5143021500 Carburetor assembly 2 | Buy now |
| 3 | 64D143840100 Gasket, float chamber | Buy now |
| 4 | 64D143810000 Body, float chamber | Buy now |
| 5 | 6E5143850200 Float | Buy now |
| 6 | 6E5145460000 Valve, needle | Buy now |
| 7 | 6E5141590000 Clip | Buy now |
| 8 | 6E5143860100 Pin, float | Buy now |
| 9 | 64D1492F4100 Jet, air slow (#82) | Buy now |
| 10 | 61U149590000 Gasket | Buy now |
| 11 | 64D143940000 Valve, drain | Buy now |
| 12 | 64D1492E8800 Jet, main (#176) | Buy now |
| 13 | 6E5143980000 Gasket | Buy now |
| 14 | 61A1492H1200 Jet, slow air (#60) | Buy now |
| 15 | 61A143830100 Screw, drain | Buy now |

Carburetor



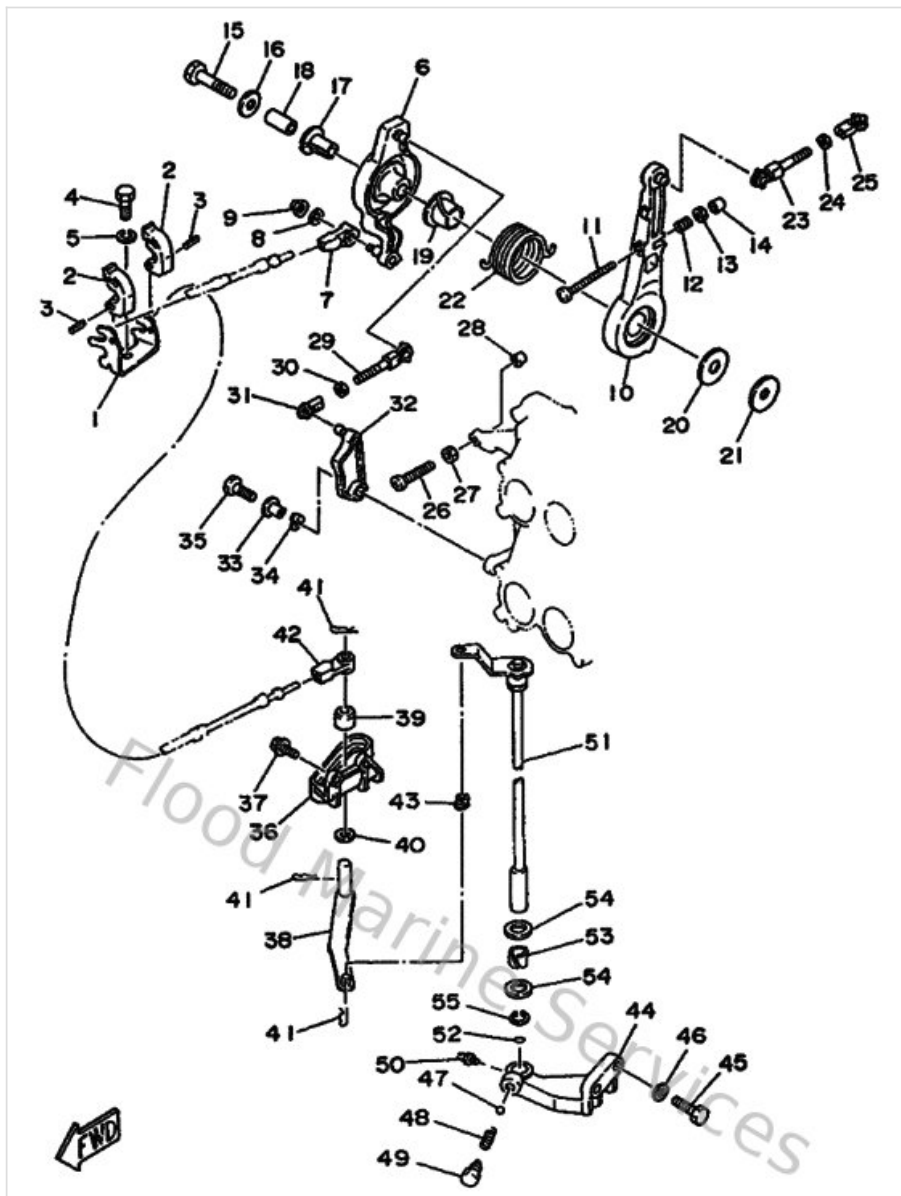
| Ref | Part | |
|-----|---|-------------------------|
| 16 | 6E5143210000 Screw, throttle | Buy now |
| 17 | 6J8143340000 Spring, throttle | Buy now |
| 18 | 6E5143280100 Plug | Buy now |
| 20 | 6E5143230300 Screw, air adjusting | Buy now |
| 21 | 6E5142230000 Spring, air adjusting | Buy now |
| 23 | 6E5145270100 Plate | Buy now |
| 25 | 6E5143240000 Screw, flat head | Buy now |
| 26 | 6J8149950000 Gasket, drin screw | Buy now |

Control



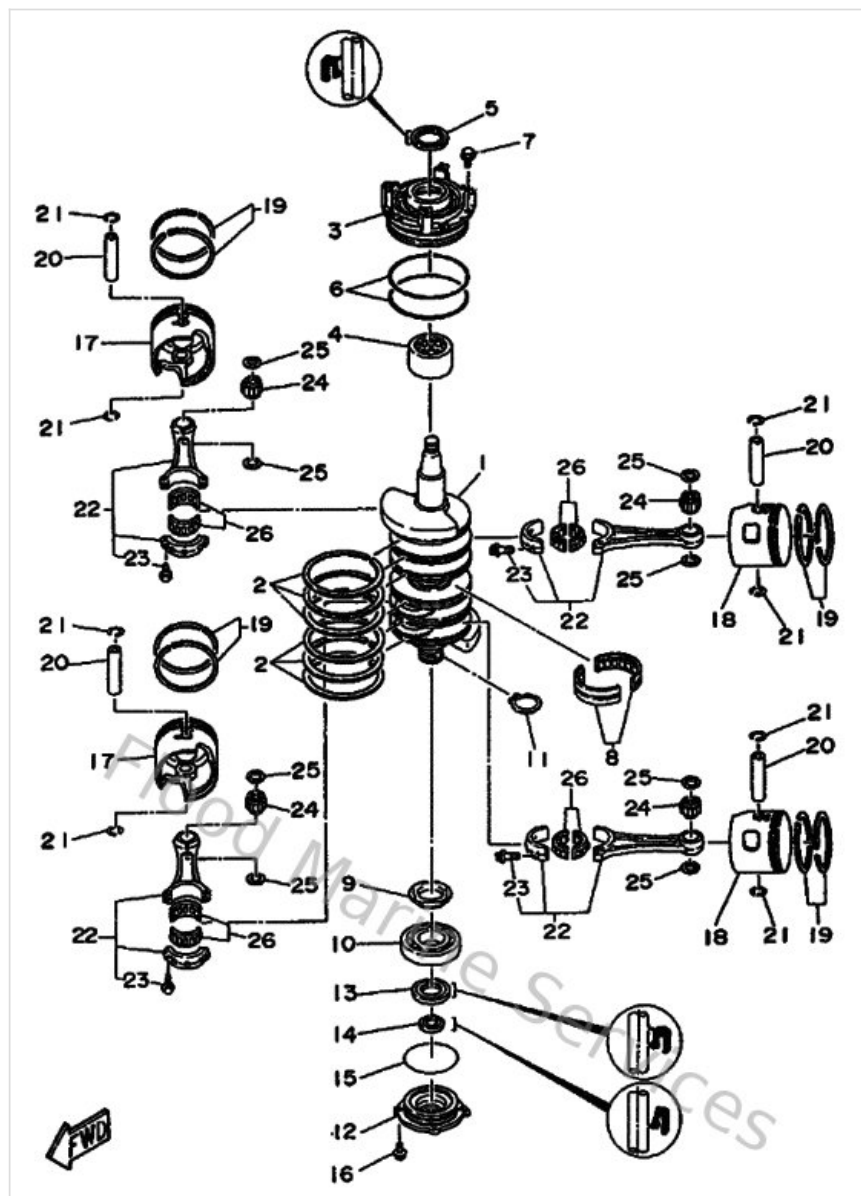
| Ref | Part | |
|-----|---|-------------------------|
| 1 | 6E5485310000 Bracket, remote control | Buy now |
| 2 | 6E5485380000 Clamp, cable | Buy now |
| 6 | 6E5416320294 Lever, magneto control | Buy now |
| 7 | 6E5483440000 Cable end, remote control | Buy now |
| 10 | 6E5416310194 Lever, magneto control | Buy now |
| 14 | 688441940000 Cap | Buy now |
| 23 | 6E5416360100 Rod, magneto control | Buy now |
| 25 | 6H1412370000 Joint, link | Buy now |
| 29 | 688416360000 Rod 1 | Buy now |
| 32 | 6E5412130100 Cam, accel. | Buy now |
| 36 | 6E5441170094 Bracket | Buy now |
| 38 | 6E5441210100 Lever, shift rod | Buy now |
| 39 | 6E5441220000 Bushing, shift rod lever | Buy now |
| 44 | 6E5441180194 Bracket 2 | Buy now |
| 49 | 648427150000 Bushing 2 | Buy now |

Control



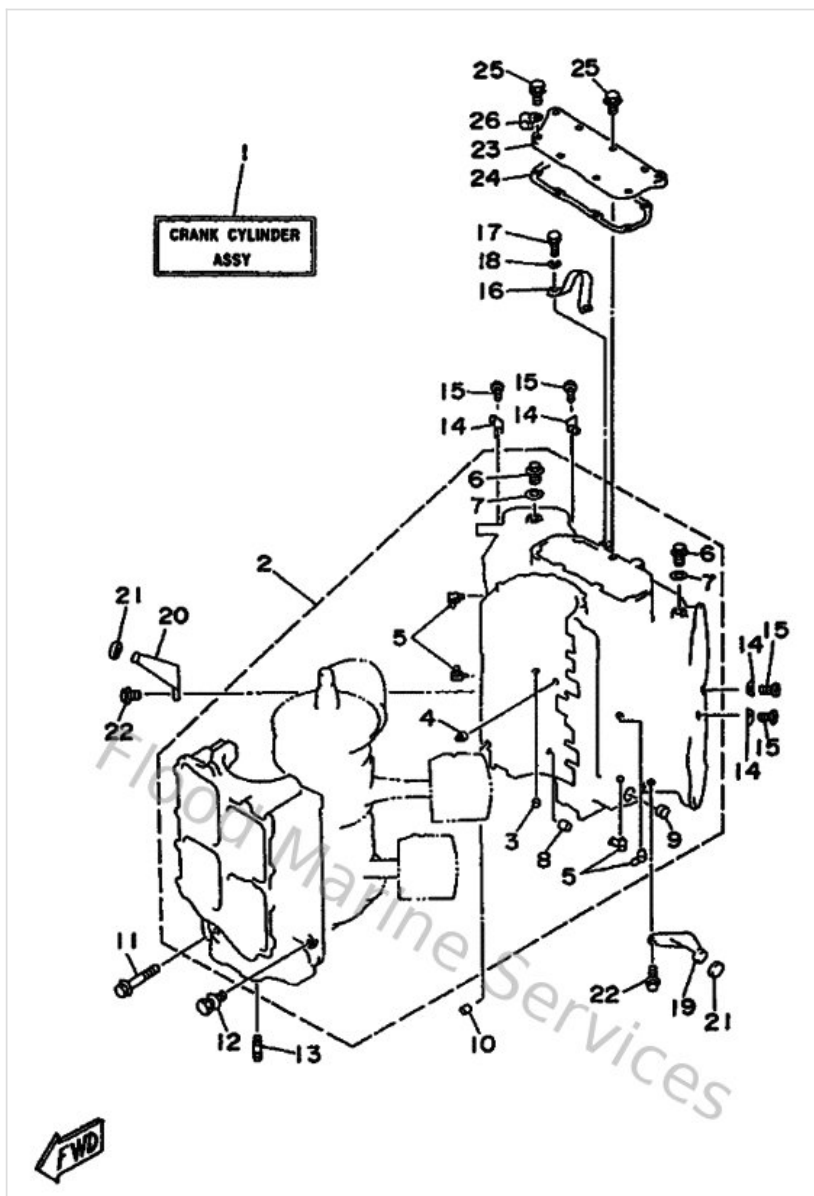
| Ref | Part | |
|-----|--|-------------------------|
| 51 | 6E5441200300 Handle gear shift assembly | Buy now |

Crankshaft & Piston



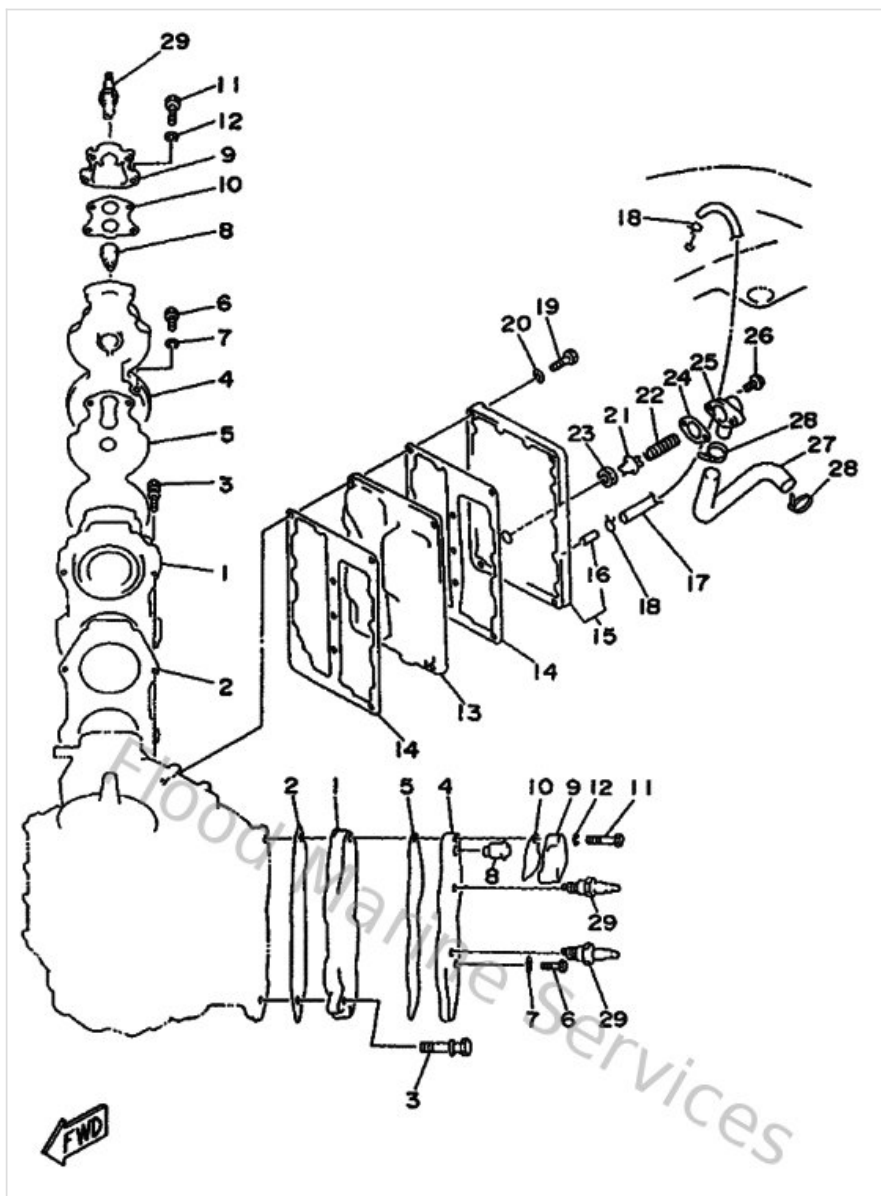
| Ref | Part | |
|-----|--|-------------------------|
| 1 | 6N7114110000 Crankshaft | Buy now |
| 2 | 6E5114470000 Seal, ring | Buy now |
| 3 | 6R3151630094 Housing, bearing 1 | Buy now |
| 9 | 6R3115360000 Gear, drive | Buy now |
| 12 | 6G5153590094 Housing, oil seal | Buy now |
| 17 | 6R5116311193 Piston (std) | Buy now |
| 18 | 6R5116461100 Piston 2 (0.50mm o/s) | Buy now |
| 19 | 64D116050200 Piston ring set (0.50mm o/s) | Buy now |
| 20 | 6R5116331000 Pin, piston | Buy now |
| 21 | 6R5116341000 Clip, piston pin | Buy now |
| 22 | 6R5116501000 Connecting kit | Buy now |

Cylinder & Crankcase 1



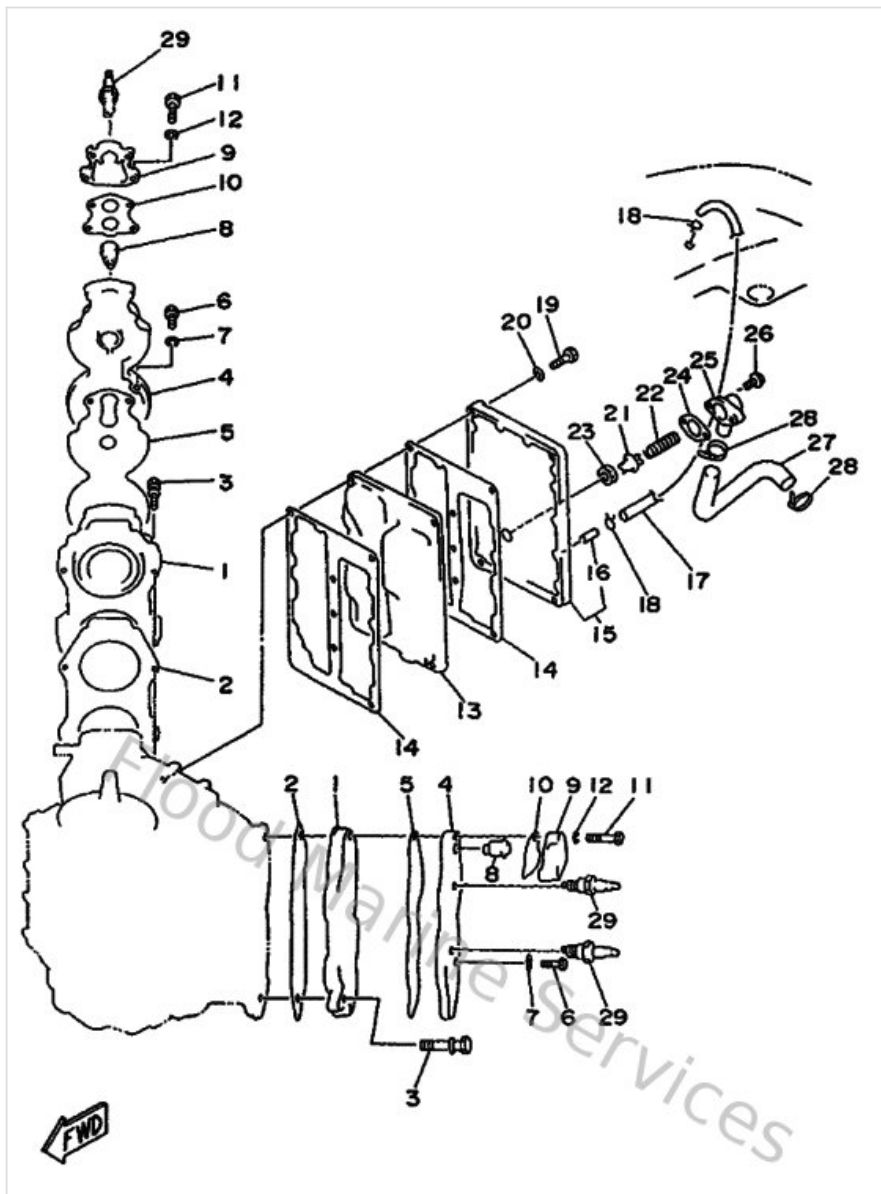
| Ref | Part | |
|-----|--|-------------------------|
| 1 | 6N6W0090144D Crank Cylinder Assembly (Ref. #2~26 & ; Cylinder - Crank) | Buy now |
| 2 | 6N6151001000 Crankcase assembly | Buy now |
| 3 | 624113790000 Valve, check | Buy now |
| 4 | 663115180100 Lock, bearing | Buy now |
| 5 | 6E5113720000 Nipple, hose | Buy now |
| 14 | 6E5113250000 Anode | Buy now |
| 16 | 6E5111900000 Hanger, Engine | Buy now |
| 19 | 6E5427610094 Stopper | Buy now |
| 20 | 6E542762001S Stopper | Buy now |
| 21 | 663445330000 Damper, upper mount | Buy now |
| 23 | 6K711371019M Cover | Buy now |
| 24 | 6E511381A200 Gasket 1 | Buy now |

Cylinder & Crankcase 2



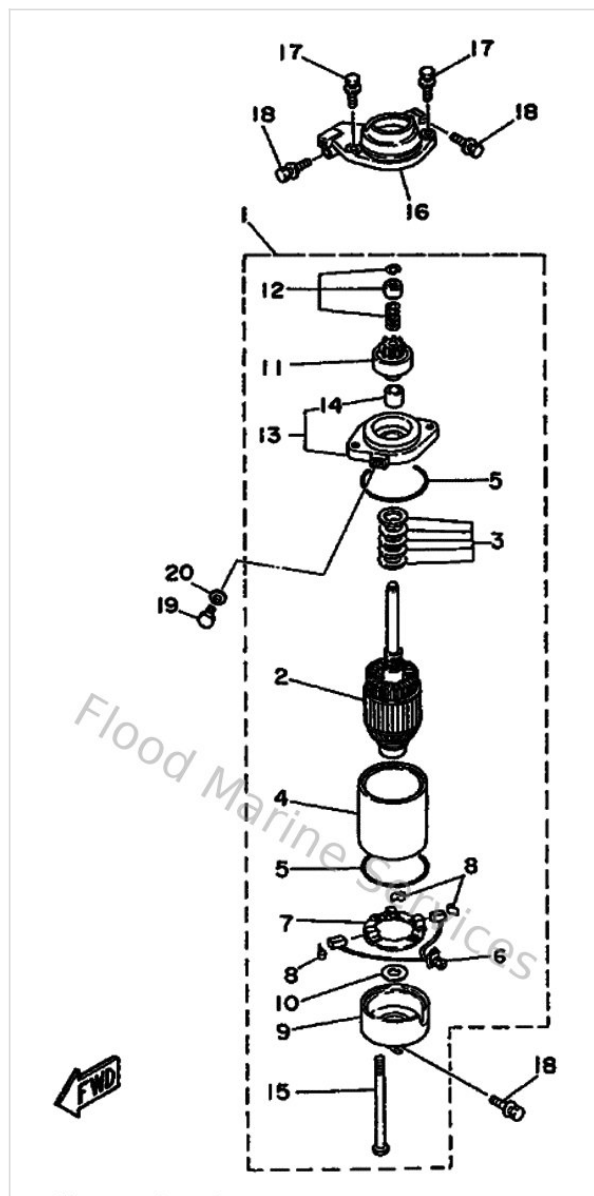
| Ref | Part | |
|-----|---|-------------------------|
| 1 | 6E511111094 Head, cylinder 1 | Buy now |
| 2 | 6E511181A100 Gasket, cylinder head 1 | Buy now |
| 4 | 6E511191019M Cover, cylinder head 1 | Buy now |
| 5 | 6E511193A000 Gasket, head cover 1 | Buy now |
| 8 | 6E5124112000 Thermostat | Buy now |
| 9 | 6G512413009M Cover, thermostat | Buy now |
| 10 | 68812414A100 Gasket, cover | Buy now |
| 13 | 6L141111001S Inner cover, exhaust | Buy now |
| 14 | 6E541112A100 Gasket, exhaust inner cover | Buy now |
| 15 | 6N741113009M Outer cover, exhaust | Buy now |
| 16 | 652244610000 Pipe, joint | Buy now |
| 17 | 6E5243120000 Pipe 2 | Buy now |
| 21 | 6G5124160000 Valve, pressure control | Buy now |
| 24 | 6G511382A100 Gasket 2 | Buy now |
| 25 | 6G511372005B Cover, bypass 2 | Buy now |

Cylinder & Crankcase 2



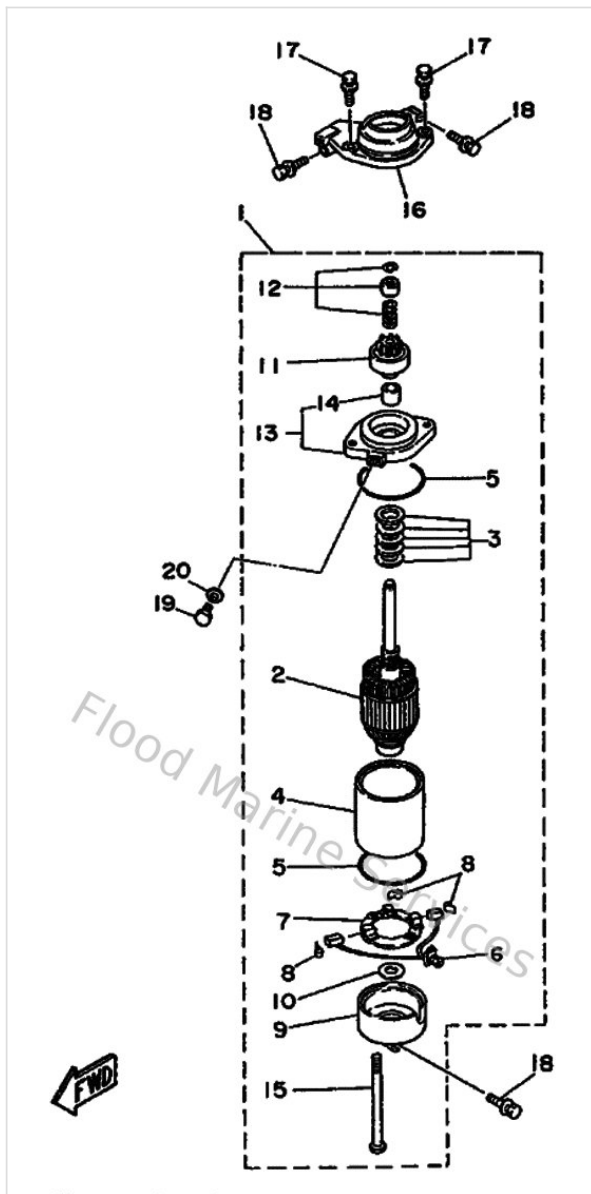
| Ref | Part | |
|-----|--|-------------------------|
| 27 | 6E5125760000 Hose 1 | Buy now |

Demarreur Electrique



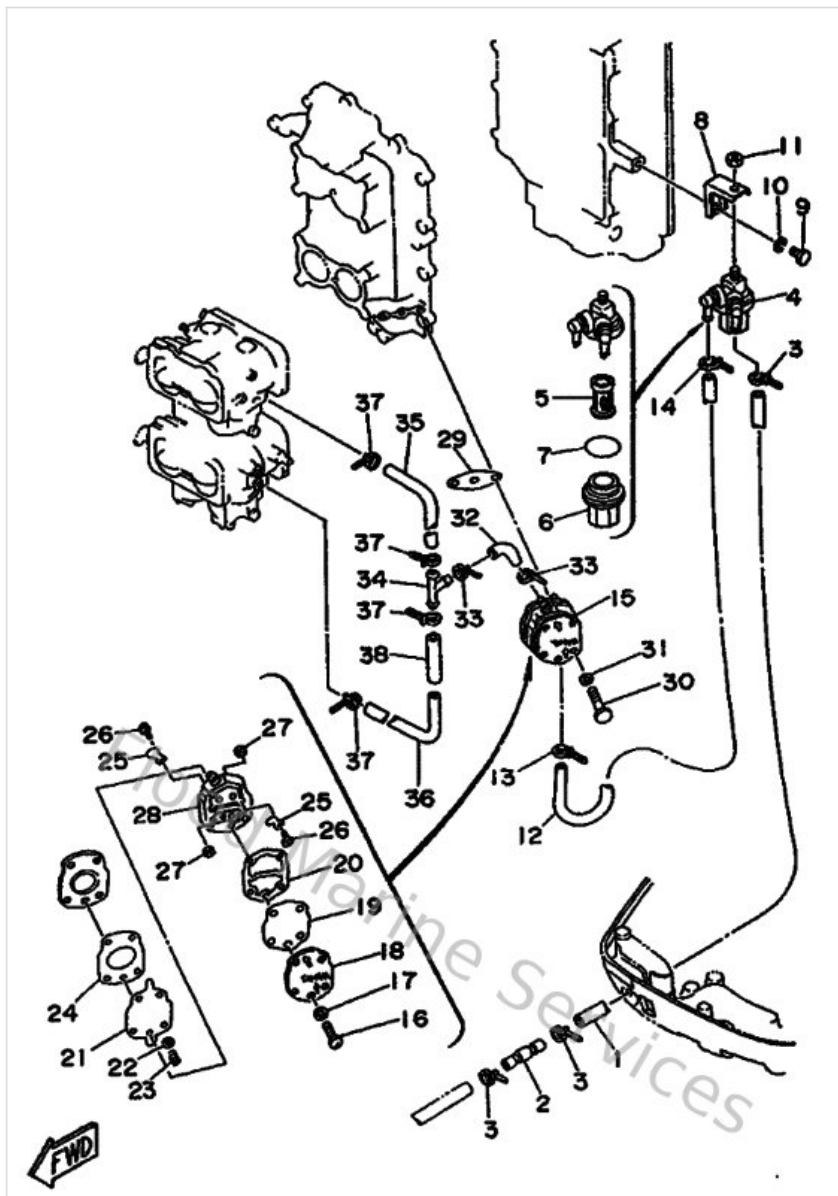
| Ref | Part | |
|-----|---|-------------------------|
| 1 | 6E5818001200 Starting motor assembly | Buy now |
| 2 | 6E5818501100 Armature assembly | Buy now |
| 3 | 6E5818091000 Washer Kit | Buy now |
| 4 | 6E5818101000 Stator assembly | Buy now |
| 5 | 6E5818471000 O-ring | Buy now |
| 6 | 6E5818011000 Brush ass'y | Buy now |
| 7 | 6E5818401000 Brush holder ass'y | Buy now |
| 8 | 6E5818131000 Spring Brush | Buy now |
| 9 | 6E5818201100 Rear Bracket assembly | Buy now |
| 10 | 6E5818240000 Washer 2 | Buy now |
| 11 | 6E5818071100 Pinion assembly | Buy now |
| 12 | 61H818570000 Retainer | Buy now |
| 13 | 6E5818301000 Front Bracket assembly | Buy now |
| 14 | 688818310000 Metal, front | Buy now |
| 15 | 6E5818261000 Bolt | Buy now |

Demarreur Electrique



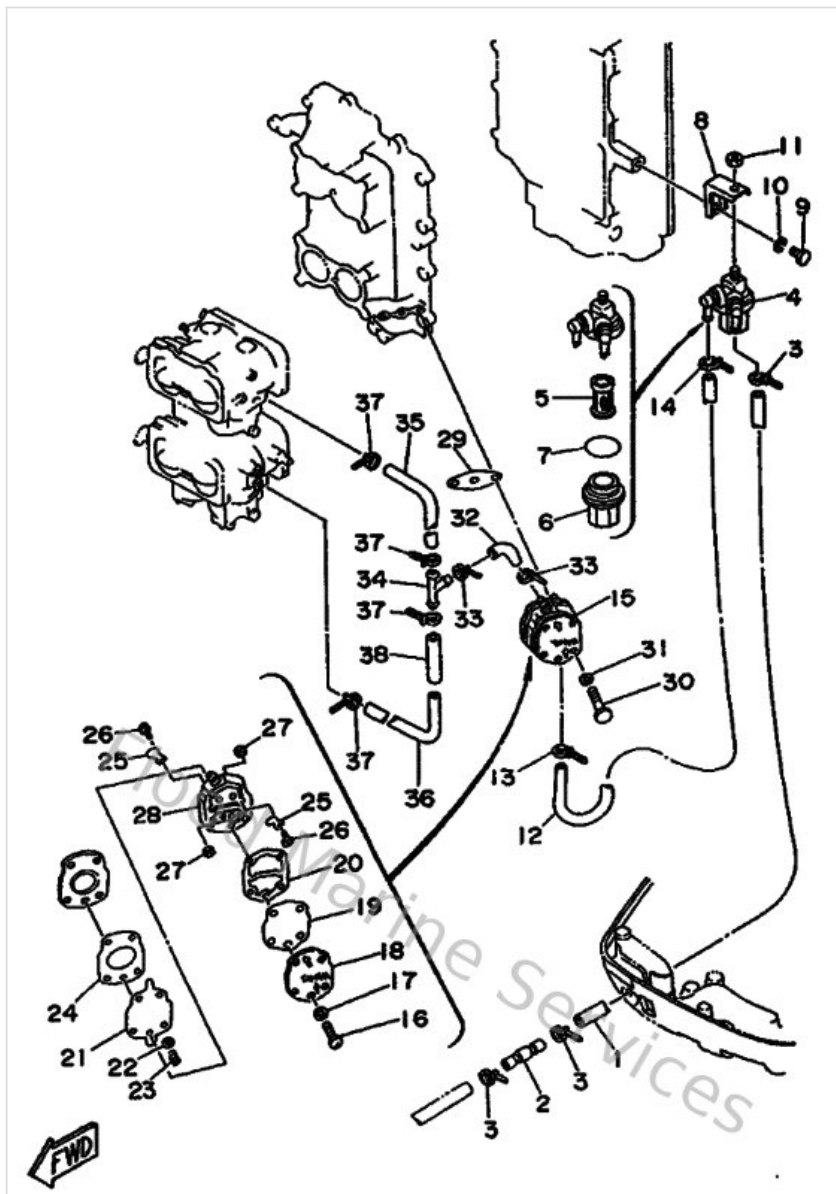
| Ref | Part | |
|-----|---|-------------------------|
| 16 | 6R3818220094 Bracket, starting motor | Buy now |

Fuel 1



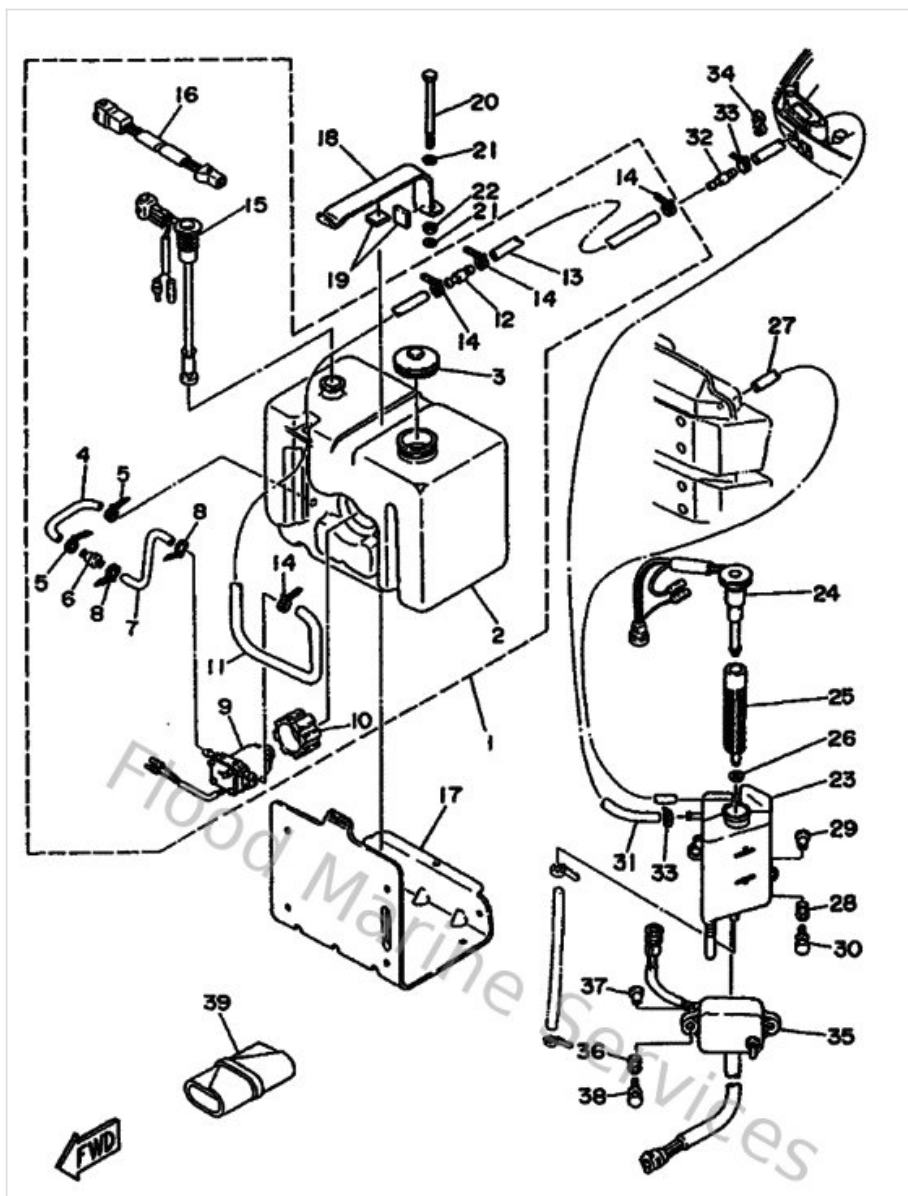
| Ref | Part | |
|-----|--|-------------------------|
| 1 | 6N7243130000 Pipe 3 | Buy now |
| 4 | 6R3245600000 Filter assembly | Buy now |
| 5 | 61N245630000 Element, filter | Buy now |
| 6 | 61N245210000 Cup, filter | Buy now |
| 8 | 6E5245660000 Bracket, filter | Buy now |
| 12 | 6E5243140000 Pipe 4 | Buy now |
| 15 | 6E5244100300 Fuel pump assembly | Buy now |
| 18 | 6E5244130000 Body 2 | Buy now |
| 19 | 6E5244710000 Diaphragm | Buy now |
| 20 | 6E5244350000 Gasket, body 2 | Buy now |
| 21 | 6E5244110000 Diaphragm | Buy now |
| 22 | 648244240000 Seat, spring | Buy now |
| 23 | 6E5244230000 Spring, diaphragm | Buy now |
| 24 | 6E5244340200 Gasket, body | Buy now |
| 25 | 6A0244210100 Valve, check | Buy now |

Fuel 1



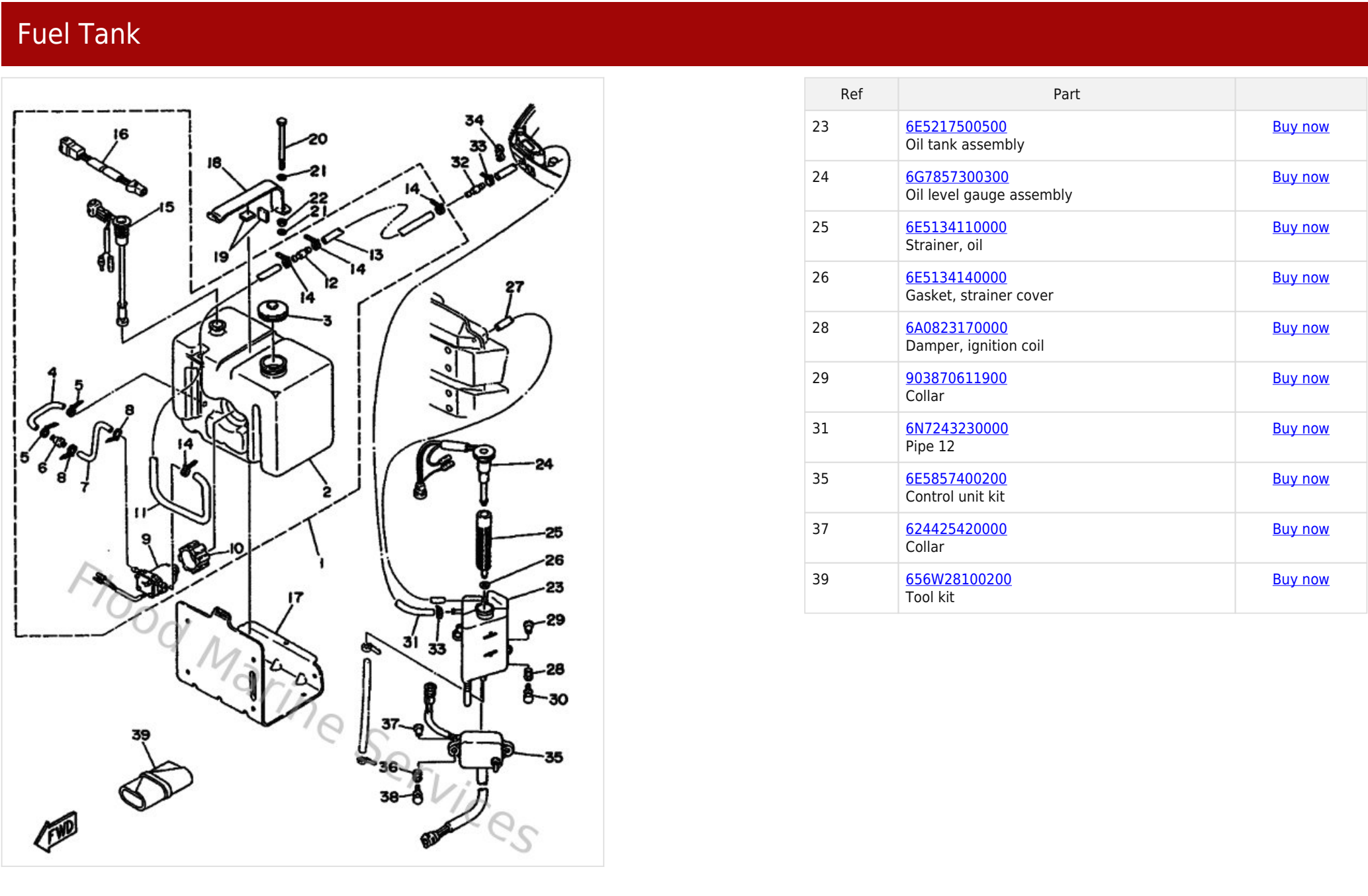
| Ref | Part | |
|-----|--|-------------------------|
| 26 | 6A0143250000 Screw, pan head | Buy now |
| 28 | 6E5244120200 Body 1 | Buy now |
| 29 | 65024431A000 Gasket,fuel pump | Buy now |
| 32 | 6G5243161000 Pipe 6 | Buy now |
| 34 | 6E5243761000 Pipe, joint 1 | Buy now |
| 35 | 6G5243181000 Hose (I90) | Buy now |
| 36 | 6G5243191000 Pipe 9 | Buy now |

Fuel Tank



| Ref | Part | |
|-----|--|-------------------------|
| 1 | 6E5217080800 Sub oil tank assembly | Buy now |
| 2 | 6E5217330200 Sub tank, oil (10.5l) | Buy now |
| 3 | 6E5217700300 Oil tank cap assembly | Buy now |
| 4 | 6E5243220000 Pipe 11 | Buy now |
| 6 | 646242510200 Strainer 1 | Buy now |
| 7 | 6E5243190100 Pipe, oil | Buy now |
| 9 | 6E5819000100 Oil feed pump assembly | Buy now |
| 10 | 6E5819220000 Grommet | Buy now |
| 11 | 6E5243210100 Pipe 10 | Buy now |
| 12 | 6E5243790000 Pipe, joint 4 | Buy now |
| 15 | 6E5857200400 Oil level gauge assembly | Buy now |
| 16 | 6R3857213000 Wire, lead | Buy now |
| 17 | 6E5217340133 Holder, oil sub tank | Buy now |
| 18 | 6E5217980133 Bracket, damper | Buy now |
| 19 | 6E5217460000 Damper | Buy now |

Fuel Tank

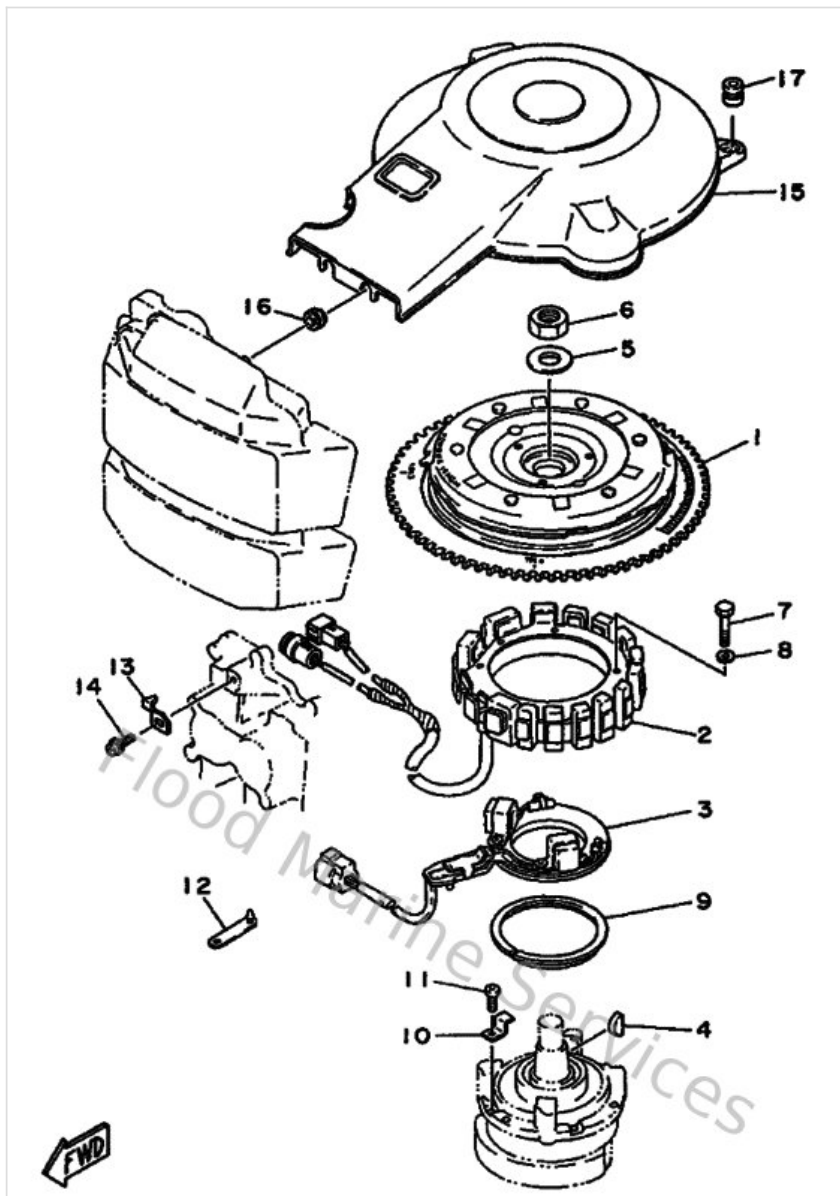


Fuel Tank

The diagram is an exploded view of a fuel tank assembly. It shows the main fuel tank (2) with various components like the oil tank assembly (23), oil level gauge assembly (24), strainer (25), gasket (26), damper (28), collar (29), pipe (31), control unit kit (35), collar (37), and tool kit (39). The diagram is numbered 1 through 41, indicating the sequence of assembly. A 'FWD' arrow is shown at the bottom left.

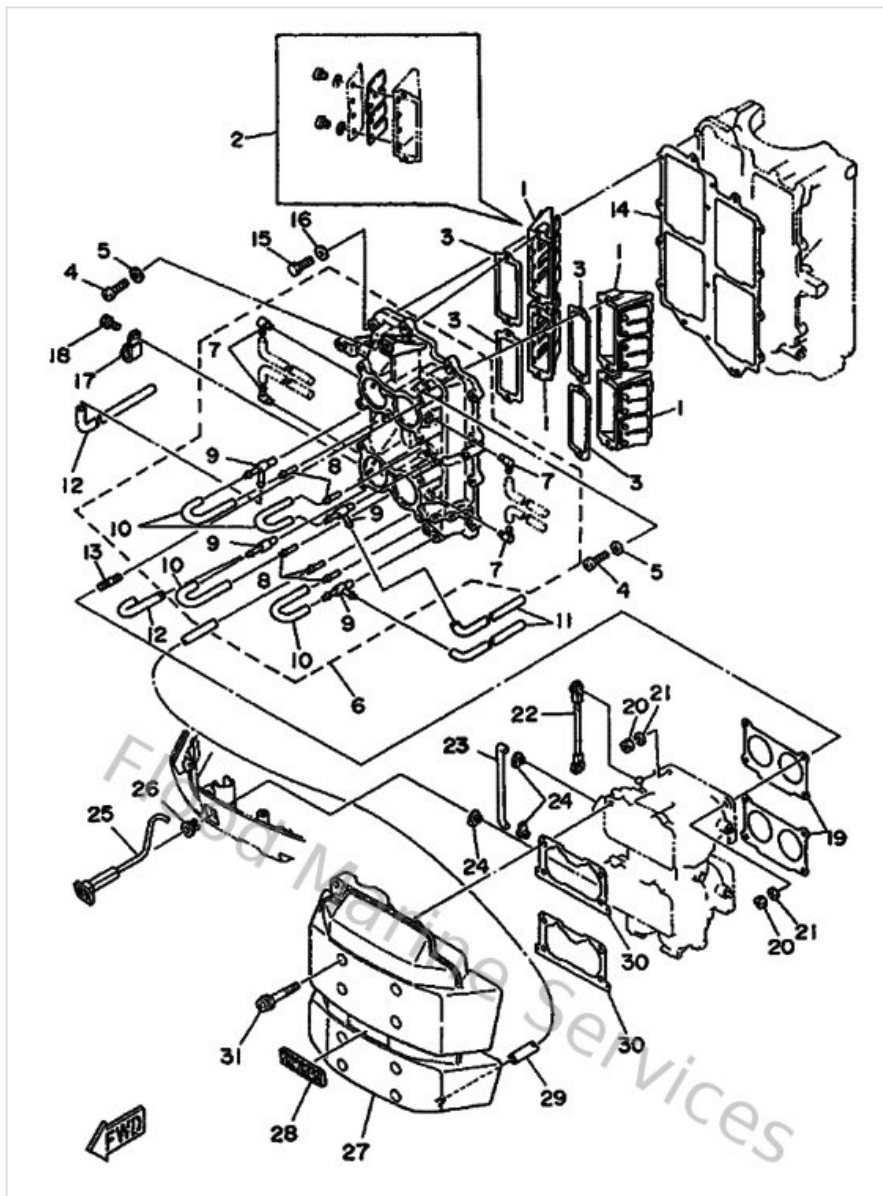
| Ref | Part | |
|-----|--|-------------------------|
| 23 | 6E5217500500 Oil tank assembly | Buy now |
| 24 | 6G7857300300 Oil level gauge assembly | Buy now |
| 25 | 6E5134110000 Strainer, oil | Buy now |
| 26 | 6E5134140000 Gasket, strainer cover | Buy now |
| 28 | 6A0823170000 Damper, ignition coil | Buy now |
| 29 | 903870611900 Collar | Buy now |
| 31 | 6N7243230000 Pipe 12 | Buy now |
| 35 | 6E5857400200 Control unit kit | Buy now |
| 37 | 624425420000 Collar | Buy now |
| 39 | 656W28100200 Tool kit | Buy now |

Generatrice



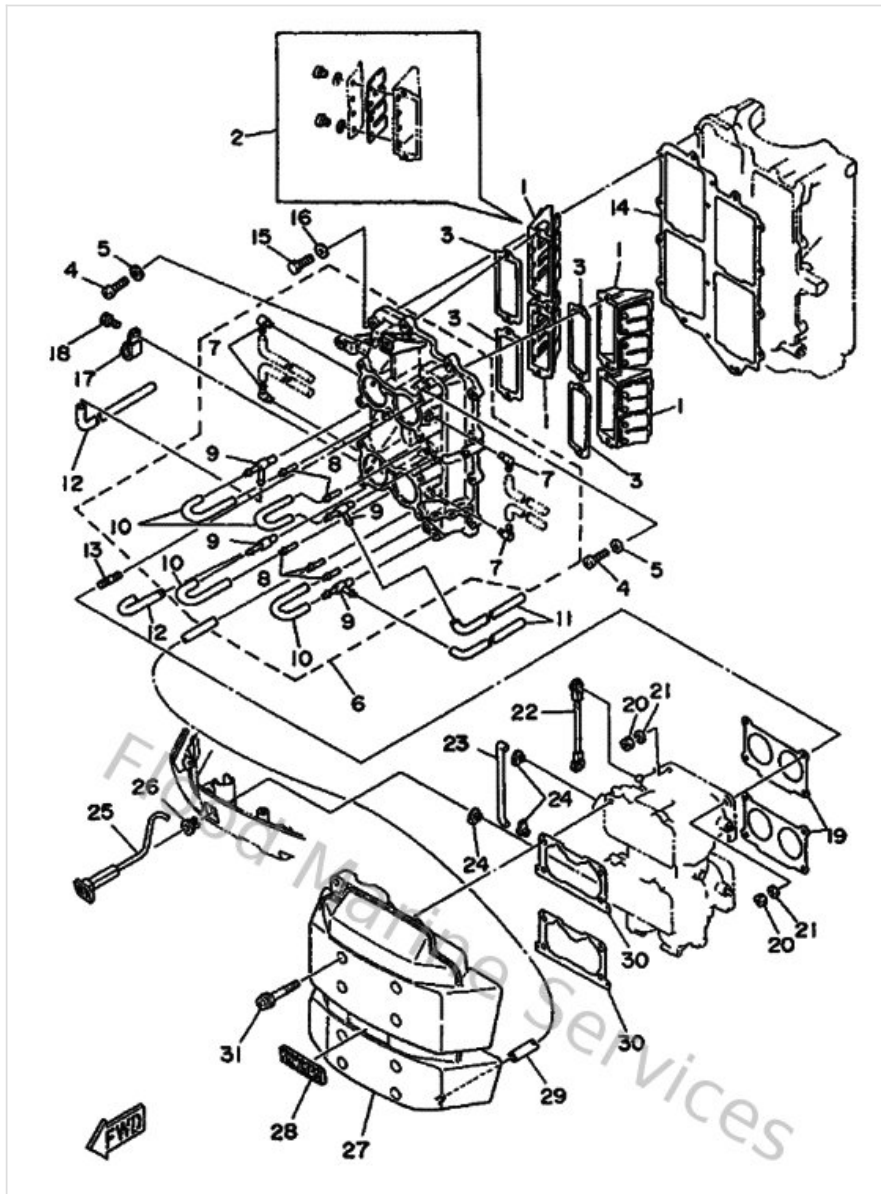
| Ref | Part | |
|-----|--|-------------------------|
| 1 | 6N7855500000 Rotor assembly | Buy now |
| 2 | 6N7855100000 Stator assembly | Buy now |
| 3 | 6N7855800000 Coil, pulser | Buy now |
| 9 | 688416110000 Retainer, magneto base 1 | Buy now |
| 10 | 688416120000 Retainer, magneto base 2 | Buy now |
| 13 | 6E5813320000 Plate, timing | Buy now |
| 15 | 6N7813370000 Cover, flywheel | Buy now |
| 17 | 663823170100 Damper, ignition coil | Buy now |

Intake



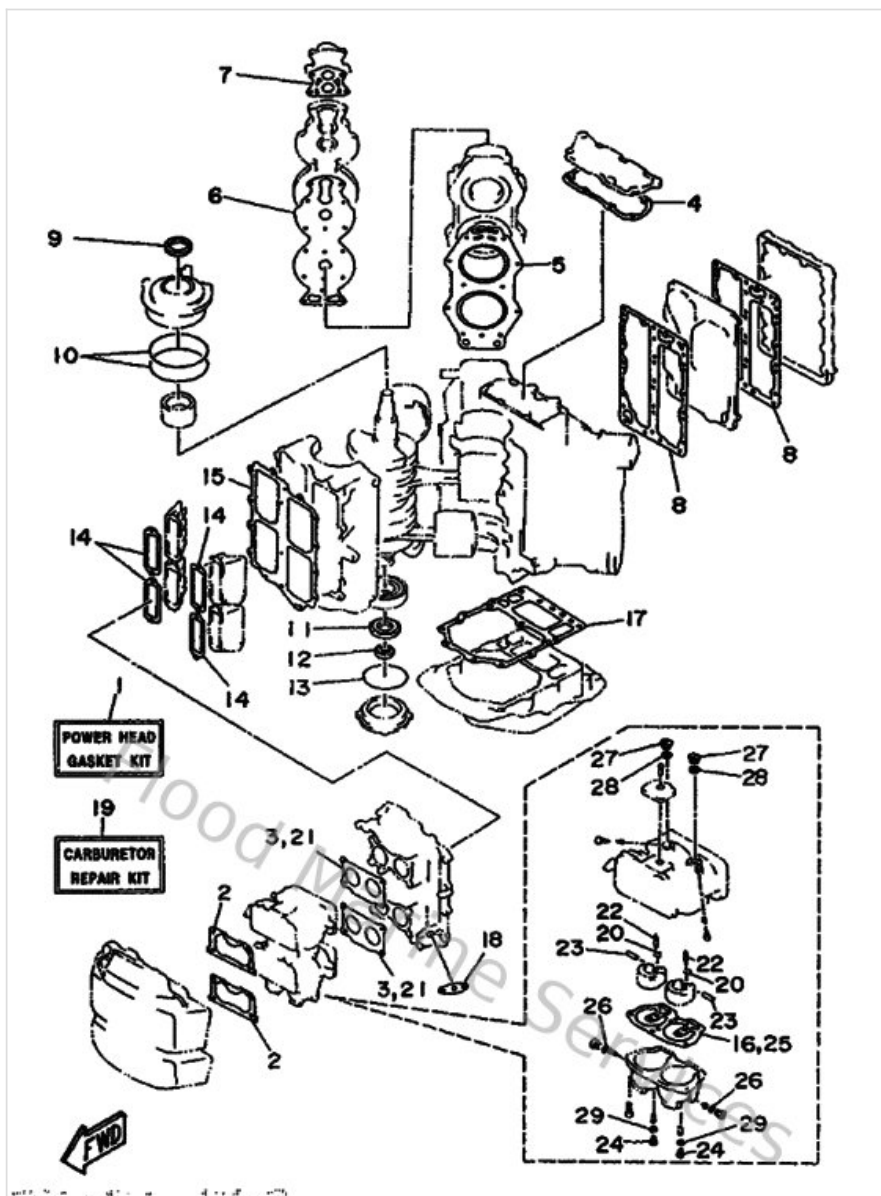
| Ref | Part | |
|-----|---|-------------------------|
| 1 | 6E5136100000 Reed valve assembly | Buy now |
| 2 | 6E5W00040000 Reed set | Buy now |
| 3 | 6E513621A100 Gasket, valve seat | Buy now |
| 6 | 6E5136411194 Manifold 1 | Buy now |
| 7 | 6E5135520000 Nozzle | Buy now |
| 8 | 624144850000 Pipe, joint | Buy now |
| 9 | 6E5113700100 Check valve assembly | Buy now |
| 14 | 6E513645A100 Gasket, manifold 1 | Buy now |
| 19 | 6E514198A200 Gasket | Buy now |
| 22 | 6E5412170100 Rod, accel. lever | Buy now |
| 23 | 6E5412560100 Rod, choke 1 | Buy now |
| 24 | 661412620200 Joint, choke lever | Buy now |
| 26 | 689412730000 Grommet | Buy now |
| 27 | 6N7144400100 Silencer assembly, intake | Buy now |
| 28 | 6E51441K0000 Emblem 1 | Buy now |

Intake



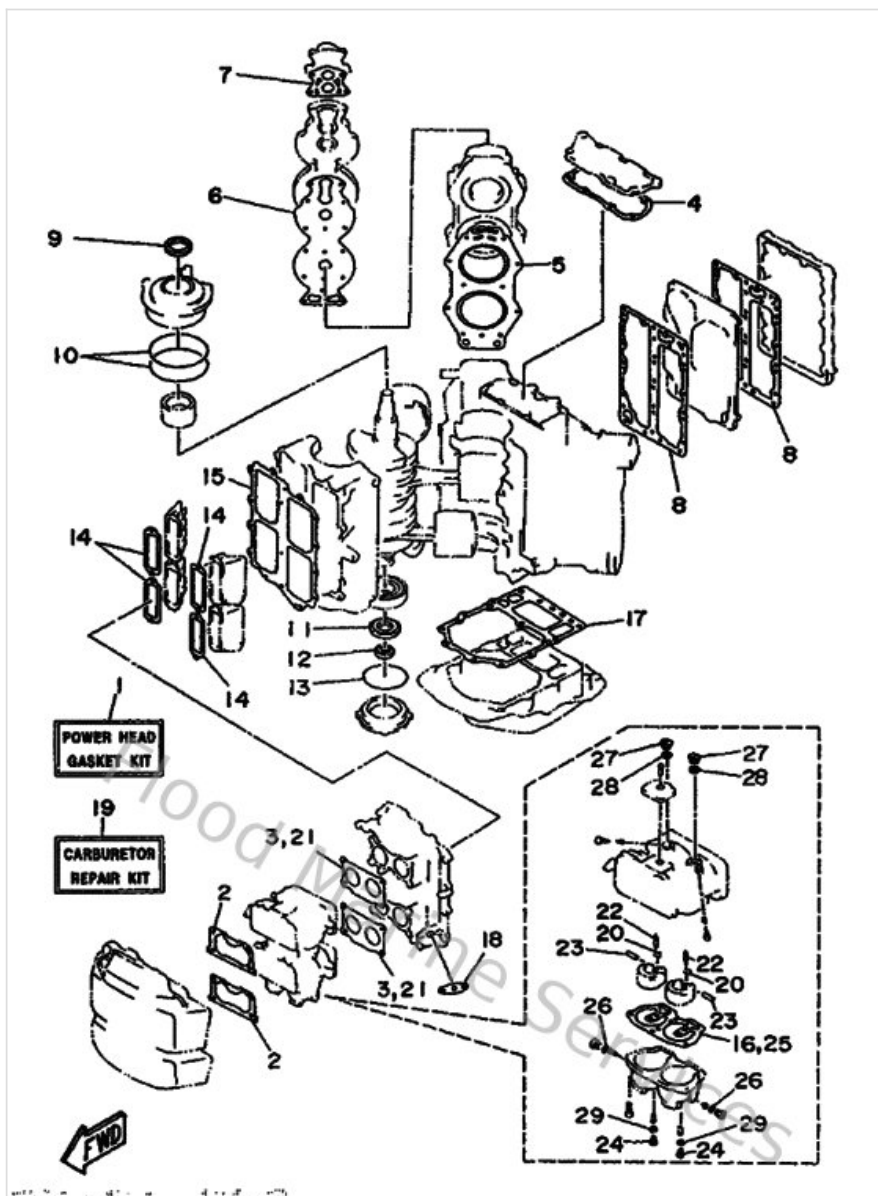
| Ref | Part | |
|-----|--|-------------------------|
| 30 | 6K7144830000 Gasket | Buy now |

Kits De Reparation 1



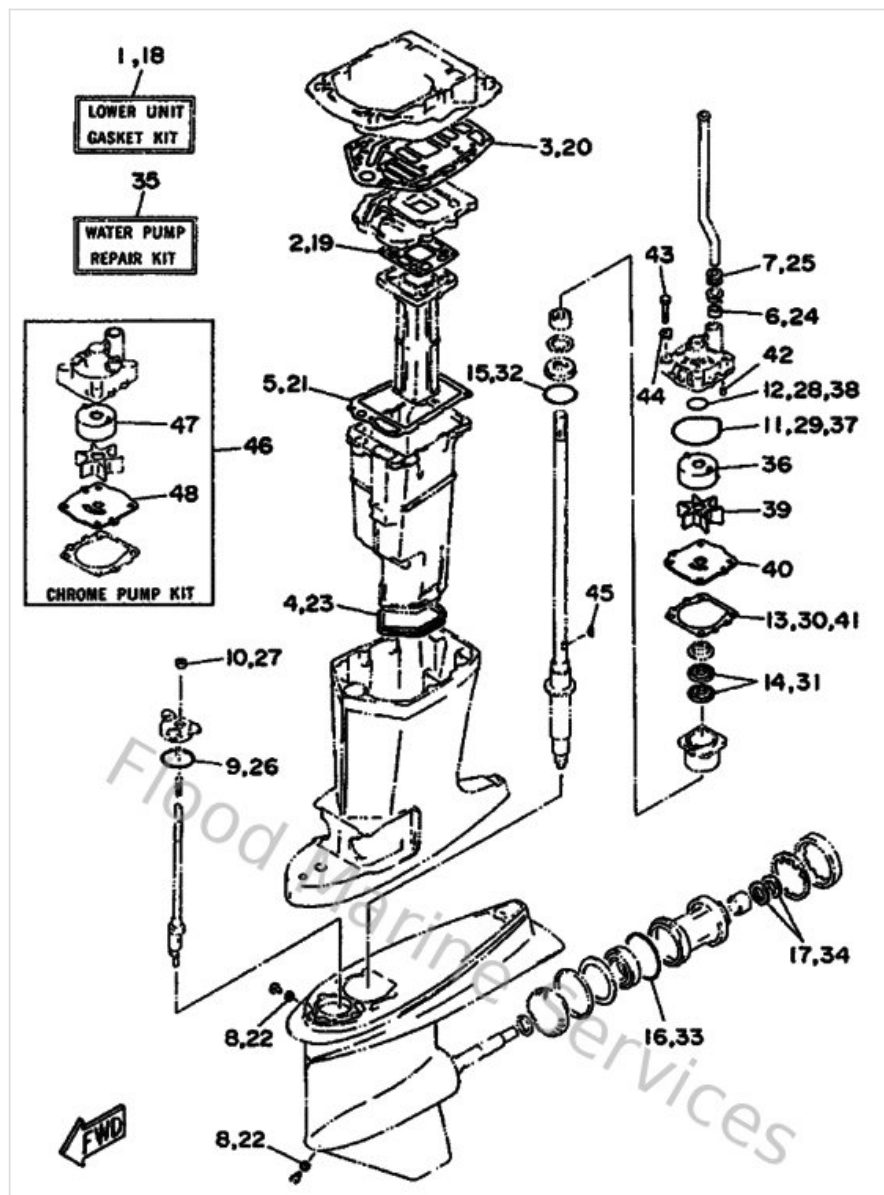
| Ref | Part | |
|-----|---|-------------------------|
| 1 | 6N6W0001A300 Gasket kit, power unit | Buy now |
| 2 | 6K7144830000 Gasket | Buy now |
| 3 | 6E514198A200 Gasket | Buy now |
| 4 | 6E511381A200 Gasket 1 | Buy now |
| 5 | 6E511181A100 Gasket, cylinder head 1 | Buy now |
| 6 | 6E511193A000 Gasket, head cover 1 | Buy now |
| 7 | 68812414A100 Gasket, cover | Buy now |
| 8 | 6E541112A100 Gasket, exhaust inner cover | Buy now |
| 14 | 6E513621A100 Gasket, valve seat | Buy now |
| 15 | 6E513645A100 Gasket, manifold 1 | Buy now |
| 16 | 6E5143840300 Gasket, float chamber | Buy now |
| 17 | 6G545113A200 Gasket, upper casing | Buy now |
| 18 | 65024431A000 Gasket, fuel pump | Buy now |
| 20 | 6E5141590000 Clip | Buy now |
| 22 | 6E5145460000 Valve, needle | Buy now |

Kits De Reparation 1



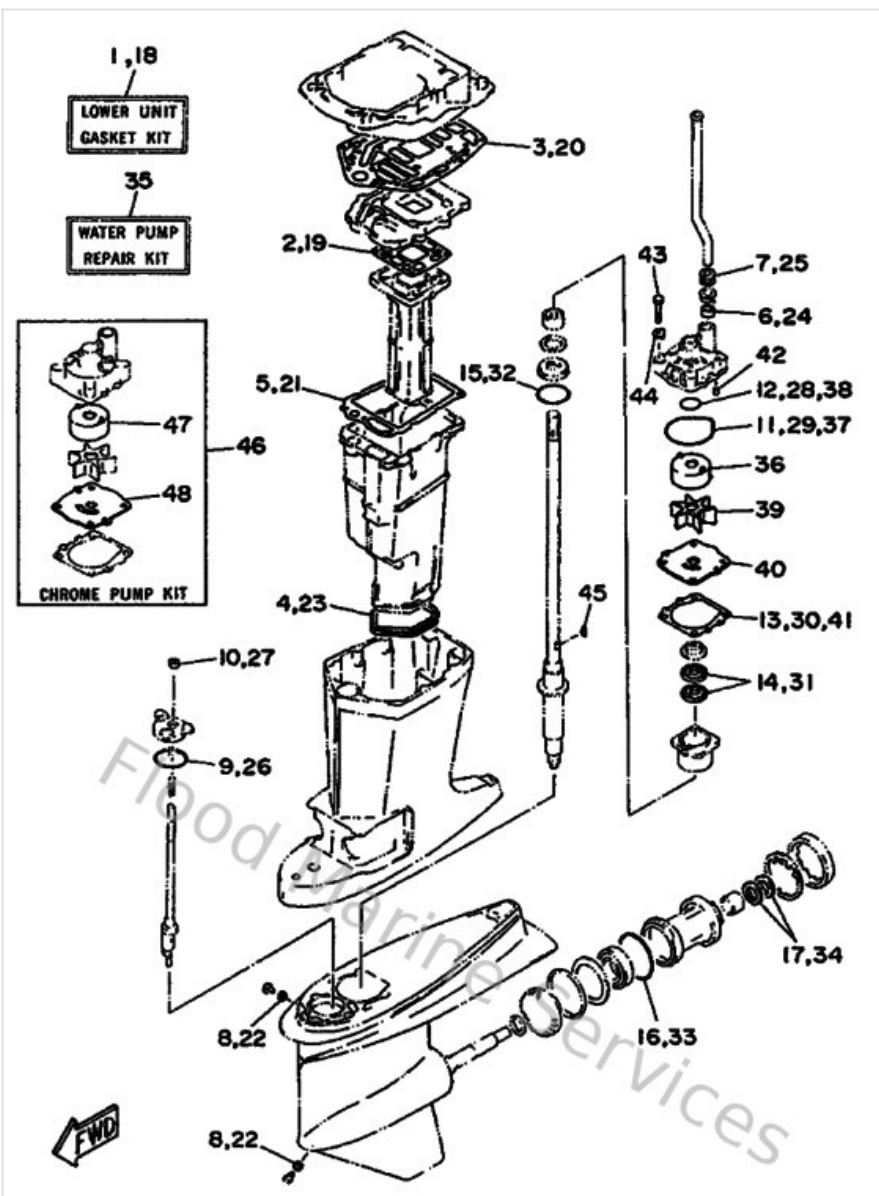
| Ref | Part | |
|-----|---|-------------------------|
| 23 | 6E5143860100 Pin, float | Buy now |
| 24 | 64D143940000 Valve, drain | Buy now |
| 25 | 64D143840000 Gasket, float chamber | Buy now |
| 26 | 6E5143980000 Gasket | Buy now |
| 27 | 6E5143280100 Plug | Buy now |
| 28 | 6E5149790000 Gasket | Buy now |
| 29 | 61U149590000 Gasket | Buy now |

Kits De Reparation 2



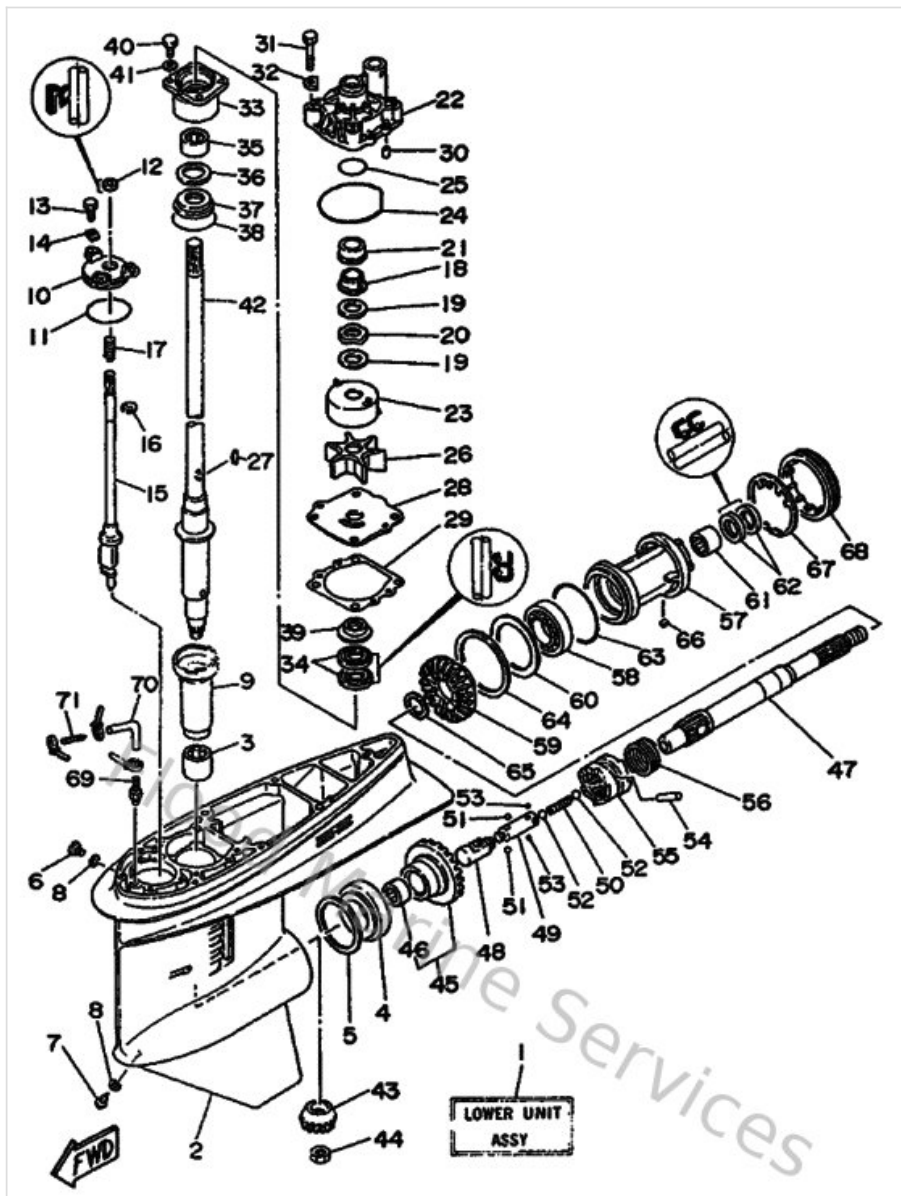
| Ref | Part | |
|-----|--|-------------------------|
| 1 | 6E5W0001F100 Gasket kit, lower unit | Buy now |
| 2 | 6E541134A000 Gasket, exhaust manifold | Buy now |
| 3 | 6G545114A000 Gasket, upper casing | Buy now |
| 4 | 6E5451230000 Gasket, muffler | Buy now |
| 5 | 6E541135A000 Gasket, exhaust manifold | Buy now |
| 7 | 6E5443660000 Damper, water seal 2 | Buy now |
| 13 | 6E544315A000 Gasket, water pump | Buy now |
| 18 | 6F3W00012100 Gasket kit, lower unit | Buy now |
| 19 | 6G541134A000 Gasket, exhaust manifold | Buy now |
| 24 | 6E5443650000 Damper, water seal 1 | Buy now |
| 35 | 6N6W00780000 Water pump repair kit | Buy now |
| 36 | 61A443220000 Insert, cartridge | Buy now |
| 39 | 6E5443520100 Impeller | Buy now |
| 40 | 6E5443230000 Outer plate, cartridge | Buy now |
| 46 | 6E5W0078A100 Water pump repair kit | Buy now |

Kits De Reparation 2



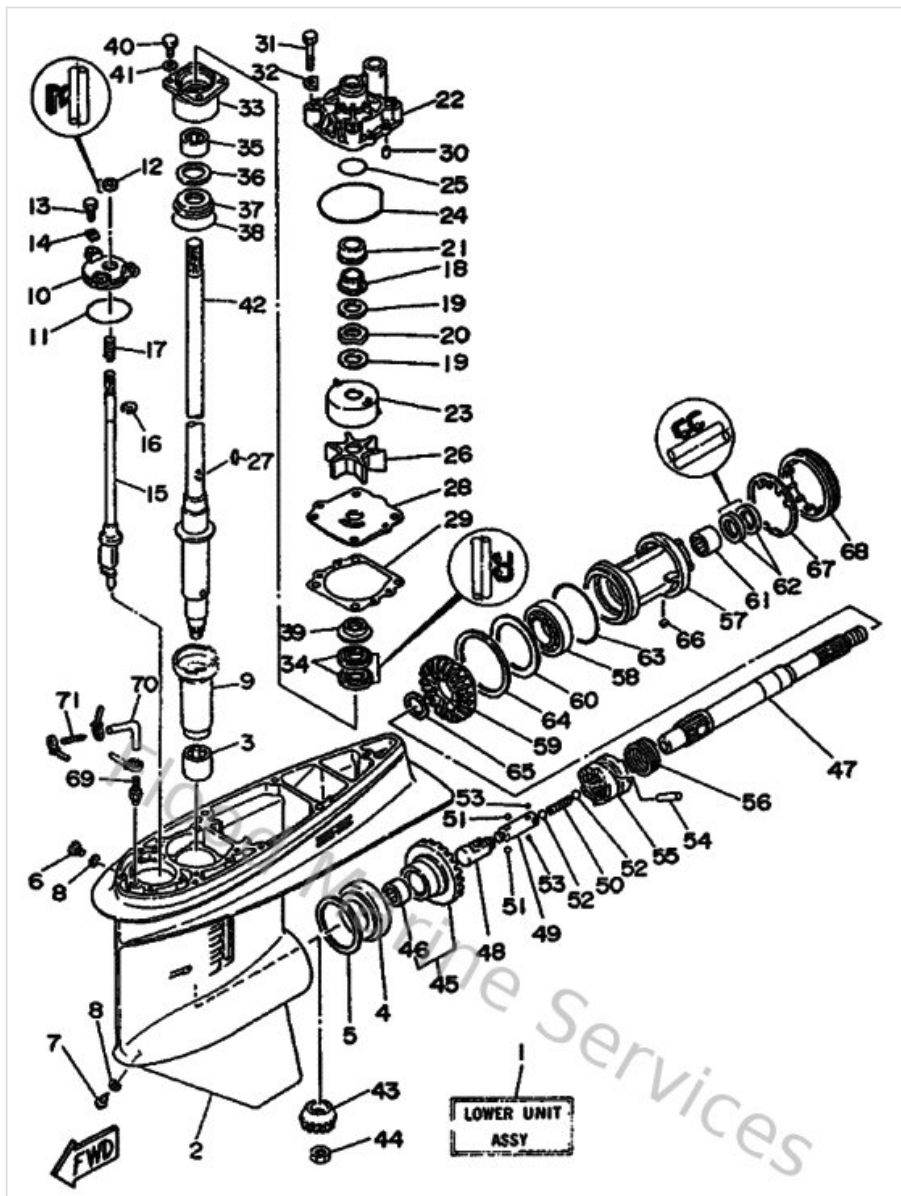
| Ref | Part | |
|-----|--|-------------------------|
| 47 | 6R3443224000 Insert, cartridge | Buy now |
| 48 | 6E5443234000 Outer plate, cartridge | Buy now |

Lower Casing & Drive



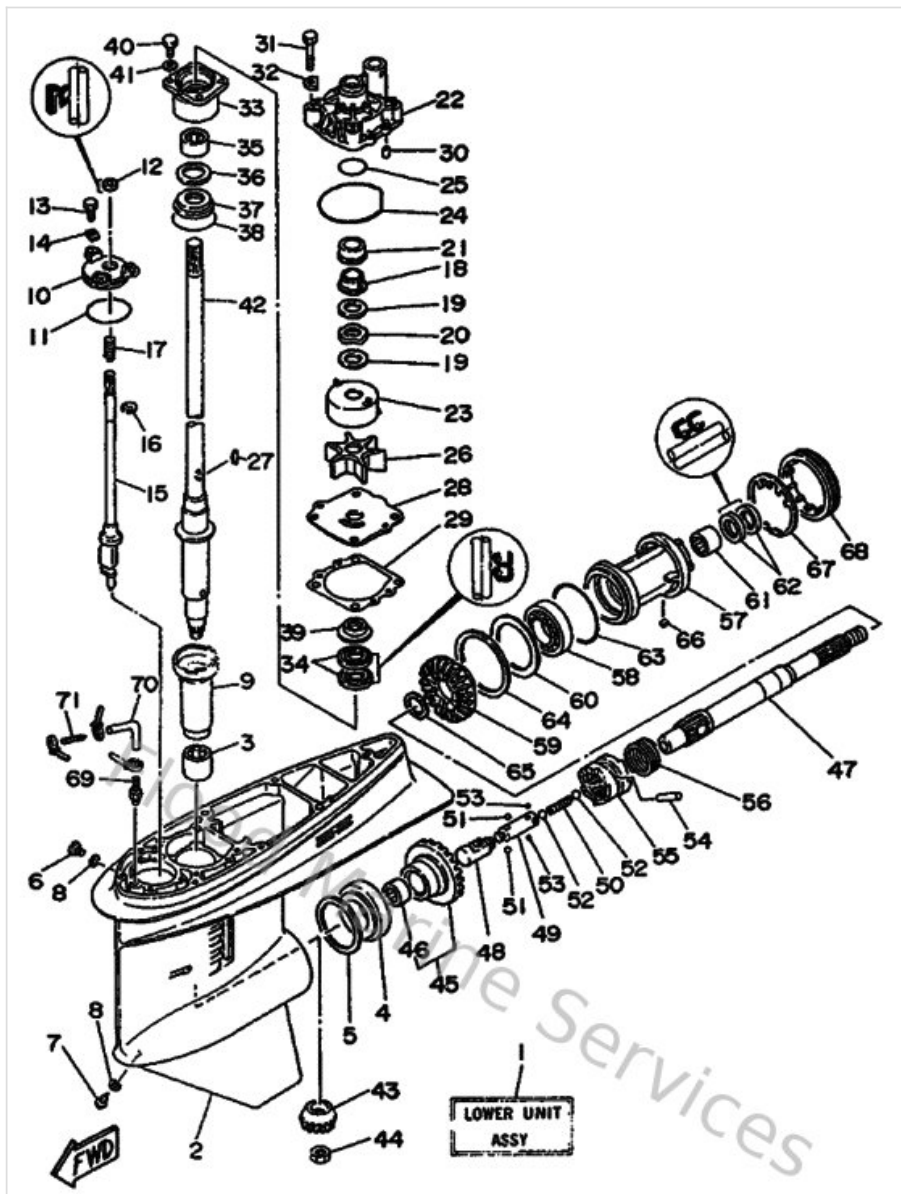
| Ref | Part | |
|-----|--|-------------------------|
| 1 | 6E545300248D Lower unit assembly | Buy now |
| 2 | 6E545301038D Casing, lower | Buy now |
| 5 | 6E5455670130 Shim (t:0.30mm) | Buy now |
| 7 | 688453410000 Plug, drain | Buy now |
| 9 | 6E5455360000 Sleeve, drive shaft | Buy now |
| 10 | 6E5453210000 Plate | Buy now |
| 15 | 6E5441500100 Shift cam assembly | Buy now |
| 18 | 61A455380000 Spacer, 1 | Buy now |
| 21 | 61A455270000 Collar, drive shaft | Buy now |
| 22 | 61A443110100 Housing, water pump | Buy now |
| 23 | 61A443220000 Insert, cartridge | Buy now |
| 26 | 6E5443520000 Impeller | Buy now |
| 28 | 6E5443230000 Outer plate, cartridge | Buy now |
| 29 | 6E544315A000 Gasket, water pump | Buy now |
| 33 | 6E5453310094 Housing, bearing | Buy now |

Lower Casing & Drive



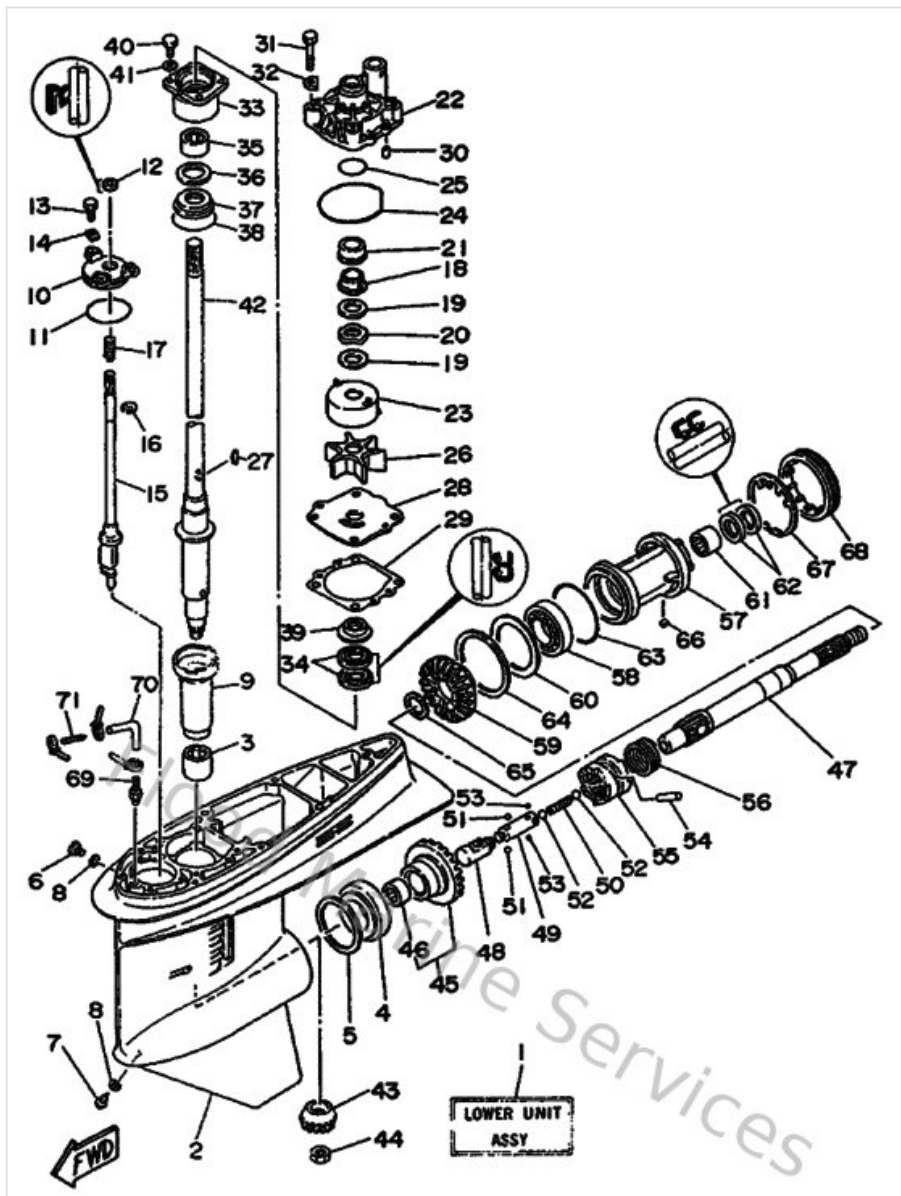
| Ref | Part | |
|-----|---|-------------------------|
| 36 | 6E5455870130 Shim (t:0.30mm) | Buy now |
| 39 | 6E5453440000 Cover, oil seal | Buy now |
| 42 | 6E5455010100 Drive shaft comp. | Buy now |
| 43 | 6E5455510200 Pinion | Buy now |
| 45 | 6E5455600100 Gear 1 assembly | Buy now |
| 47 | 6E5456110100 Shaft, propeller | Buy now |
| 48 | 6E5456410100 Shifter | Buy now |
| 49 | 6E5456340100 Slide, shift | Buy now |
| 55 | 6E5456310100 Clutch, dog | Buy now |
| 56 | 6E5456330100 Ring, cross pin | Buy now |
| 57 | 6E5453320094 Housing, bearing | Buy now |
| 59 | 6E5455710100 Gear 2 | Buy now |
| 60 | 6E5455671000 Shim (t:0.12mm) | Buy now |
| 64 | 6L6455776000 Shim (t:0.50mm) | Buy now |
| 67 | 688453830200 Washer, claw | Buy now |

Lower Casing & Drive



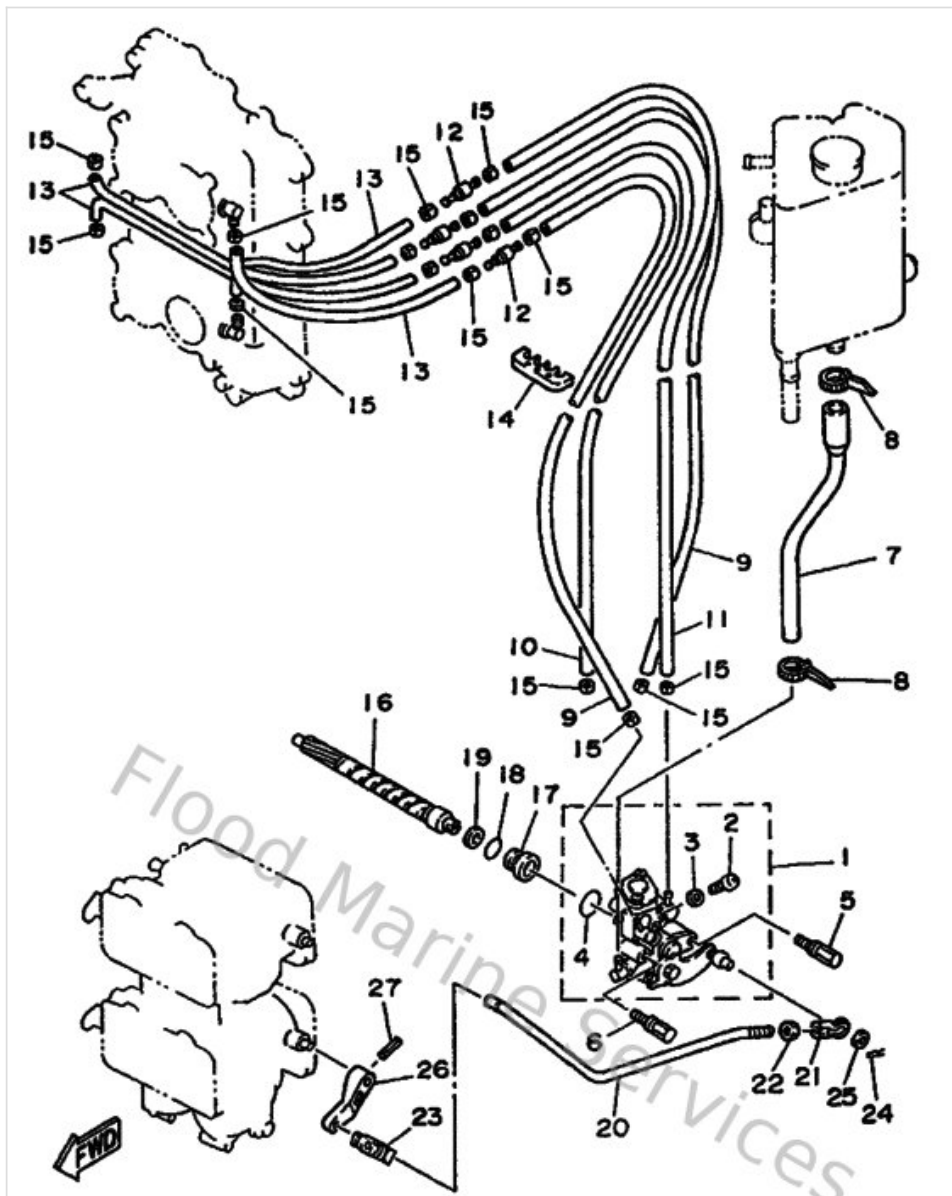
| Ref | Part | |
|-----|---|-------------------------|
| 68 | 688453840000 Nut | Buy now |
| 69 | 6E5453780000 Nipple, hose | Buy now |
| 71 | 6E5835581000 End, nipple | Buy now |
| 1 | 6E5443660000 Damper, water seal 2 | Buy now |
| 2 | 6E5443610000 Tube, water | Buy now |
| 3 | 6E5443650000 Damper, water seal 1 | Buy now |
| 8 | 663453760094 Guide, seal damper | Buy now |
| 9 | 688453750000 Damper, seal 2 | Buy now |
| 10 | 688452140200 Cover, water inlet | Buy now |
| 11 | 688452150200 Cover, water inlet | Buy now |
| 14 | 6E5453710100 Trim tab | Buy now |
| 17 | 6E5835580000 End, nipple | Buy now |
| 20 | 6E5443120000 Cover, water pump housing | Buy now |
| 21 | 6E5459870100 Spacer 1 | Buy now |
| 22 | 688459970100 Spacer 2 | Buy now |

Lower Casing & Drive



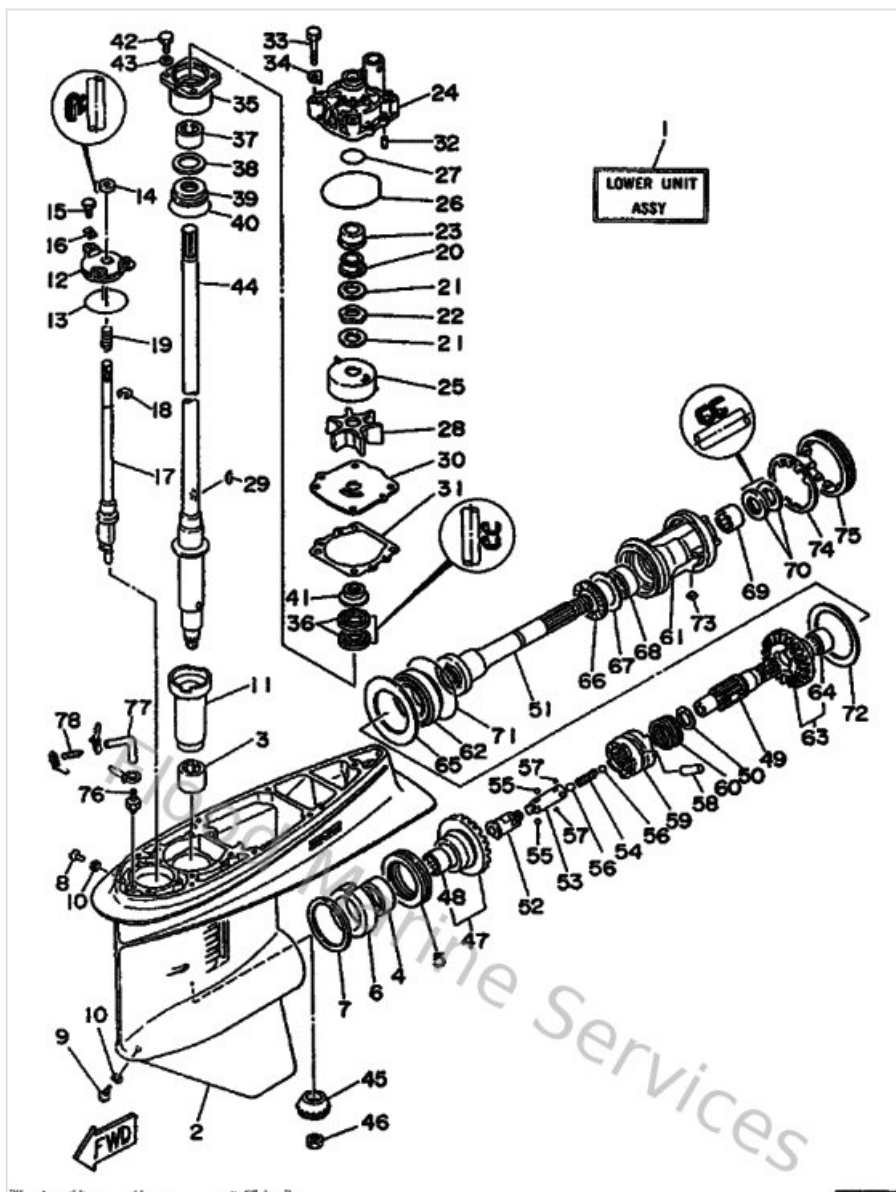
| Ref | Part | |
|-----|--|-------------------------|
| 26 | 688459700300 Propeller (3x13"x19"-k) | Buy now |
| 27 | 6E5459781000 Propeller assembly (3x14"x26"-p) | Buy now |
| 28 | 6E5453711000 Tab-trim | Buy now |
| 29 | 6E5459941000 Plate, tooth | Buy now |

Oil Pump



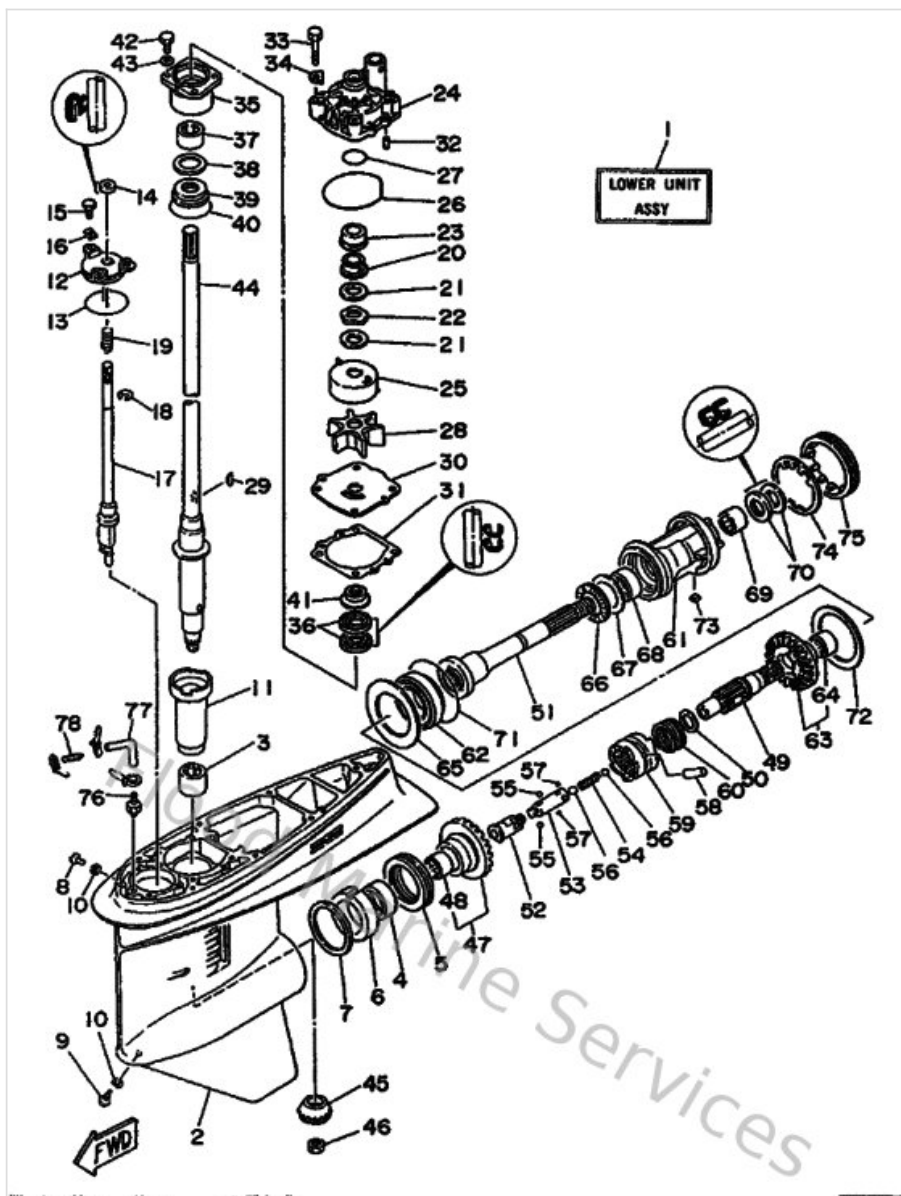
| Ref | Part | |
|-----|---|-------------------------|
| 1 | 6N6132000000 Oil injection pump assembly | Buy now |
| 2 | 716244440000 Screw | Buy now |
| 3 | 1YU131870000 Gasket, breather bolt | Buy now |
| 7 | 6N7134160000 Pipe, oil 1 | Buy now |
| 12 | 6R3131831000 Valve, check | Buy now |
| 16 | 6R3115370000 Gear, driven | Buy now |
| 17 | 6R3131170000 Collar, distance | Buy now |
| 20 | 6R3412410000 Rod, link | Buy now |
| 21 | 6H1412370000 Joint, link | Buy now |
| 23 | 6R5412370000 Joint, link | Buy now |
| 26 | 6E5142760100 Lever | Buy now |

Optionnelles 1



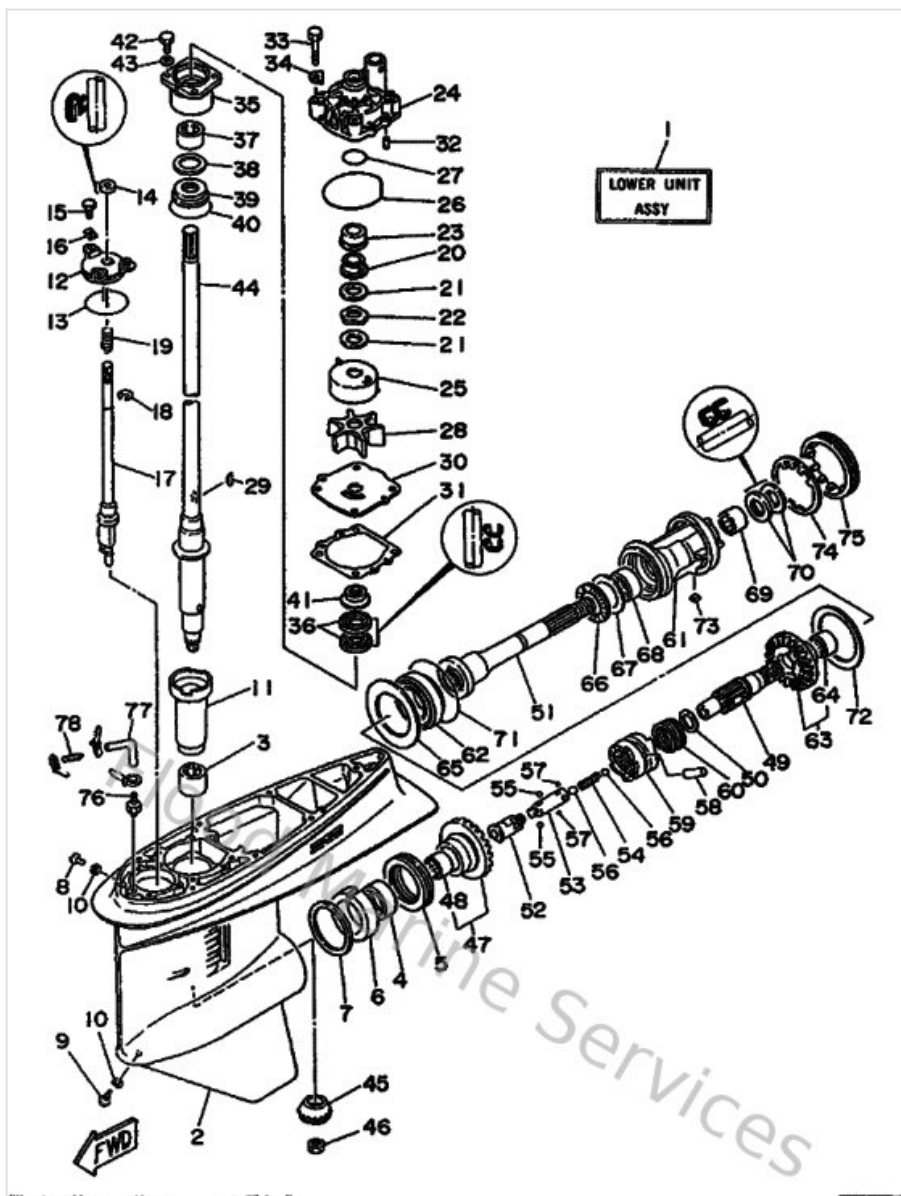
| Ref | Part | |
|-----|---|-------------------------|
| 1 | 6L645300228D Lower Unit Assembly (Ref. #2 ~78 & Alternate 2, Ref. #) | Buy now |
| 2 | 6E545301038D Casing, lower | Buy now |
| 6 | 6L6455380000 Spacer, 1 | Buy now |
| 7 | 6E5455674000 Shim (t:0.30mm) | Buy now |
| 9 | 688453411000 Plug, drain | Buy now |
| 11 | 6E5455360000 Sleeve, drive shaft | Buy now |
| 12 | 6E5453210000 Plate | Buy now |
| 17 | 6L6441500000 Shift cam assembly | Buy now |
| 20 | 61A455380000 Spacer, 1 | Buy now |
| 23 | 61A455270000 Collar, drive shaft | Buy now |
| 24 | 61A443110100 Housing, water pump | Buy now |
| 25 | 61A443220000 Insert, cartridge | Buy now |
| 28 | 6E5443520000 Impeller | Buy now |
| 30 | 6E5443230000 Outer plate, cartridge | Buy now |
| 31 | 6E544315A000 Gasket, water pump | Buy now |

Optionnelles 1



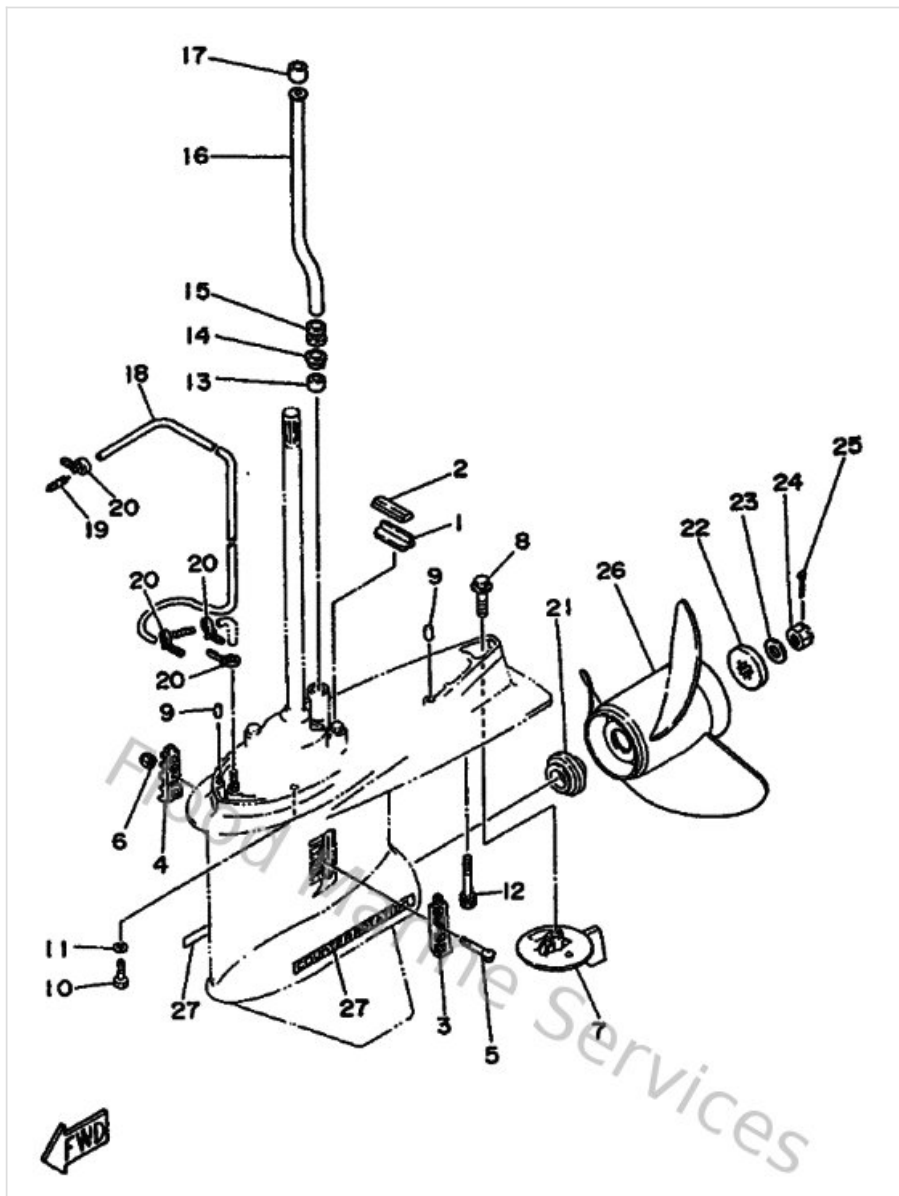
| Ref | Part | |
|-----|---|-------------------------|
| 35 | 6E545331009S Housing, bearing | Buy now |
| 38 | 6E5455876000 Shim (t:0.50mm) | Buy now |
| 41 | 6E5453440000 Cover, oil seal | Buy now |
| 44 | 6E5455012100 Drive shaft comp. | Buy now |
| 45 | 6E5455510200 Pinion | Buy now |
| 47 | 6L6455600000 Gear | Buy now |
| 49 | 6K1456110000 Shaft, Propeller | Buy now |
| 51 | 6L6456112000 Shaft, Propeller | Buy now |
| 52 | 6K1456410100 Shifter | Buy now |
| 53 | 6E5456340100 Slide, shift | Buy now |
| 59 | 6E5456310100 Clutch, dog | Buy now |
| 60 | 6E5456330100 Ring, cross pin | Buy now |
| 61 | 6L64533200CA Housing, bearing | Buy now |
| 63 | 6L6455700000 Gear 2 (26T) | Buy now |
| 65 | 6L6455760000 Washer, thrust | Buy now |

Optionnelles 1



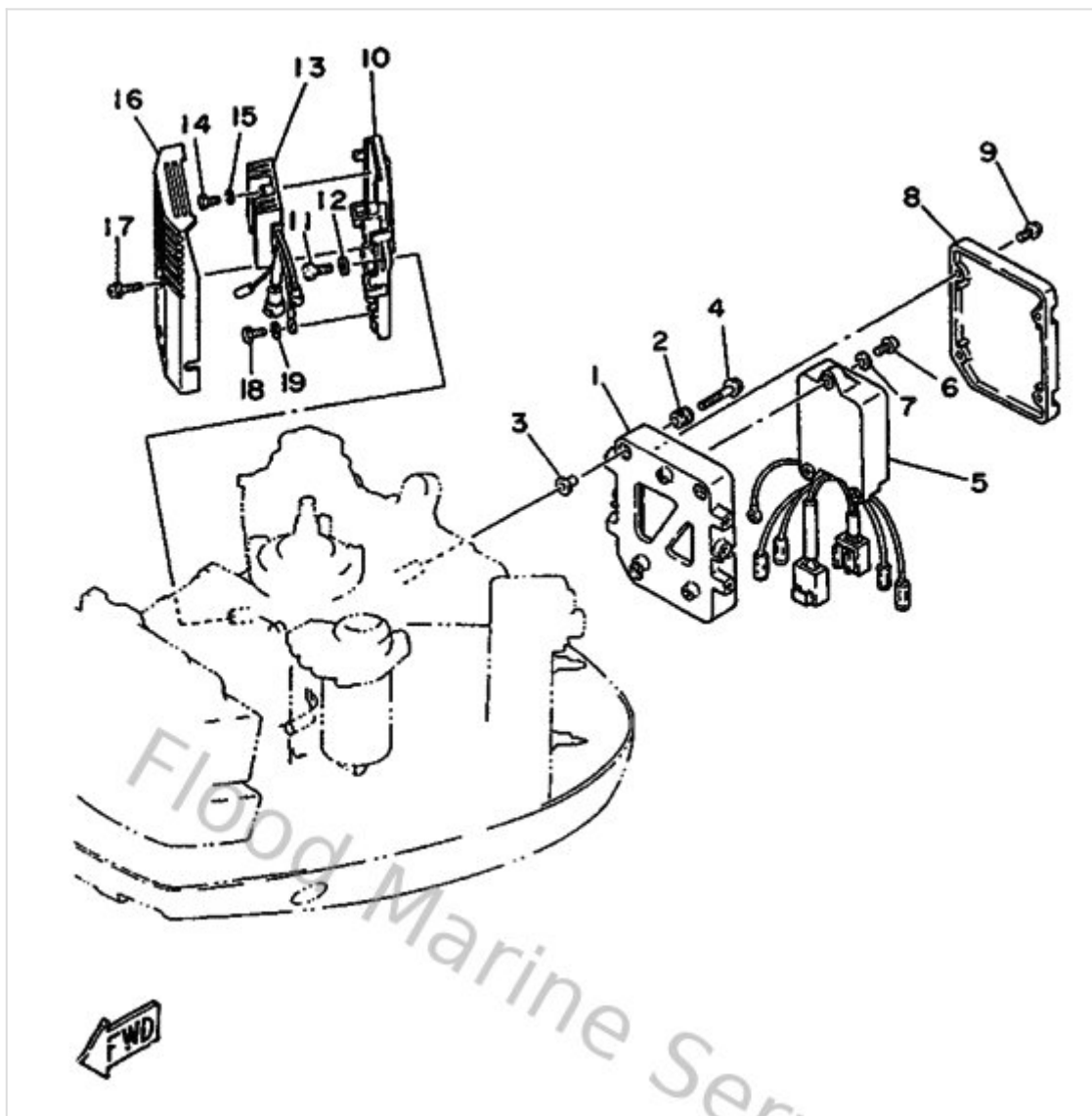
| Ref | Part | |
|-----|---|-------------------------|
| 67 | 6K1455780130 Shim (t:0.30mm) | Buy now |
| 72 | 6L6455770030 Shim (t:0.30mm) | Buy now |
| 74 | 688453830200 Washer, claw | Buy now |
| 75 | 688453840000 Nut | Buy now |
| 76 | 6E5453780000 Nipple, hose | Buy now |
| 78 | 6E5835581000 End, nipple | Buy now |
| 97 | 6E5455670110 Shim (t:0.10mm) | Buy now |

Optionnelles 2



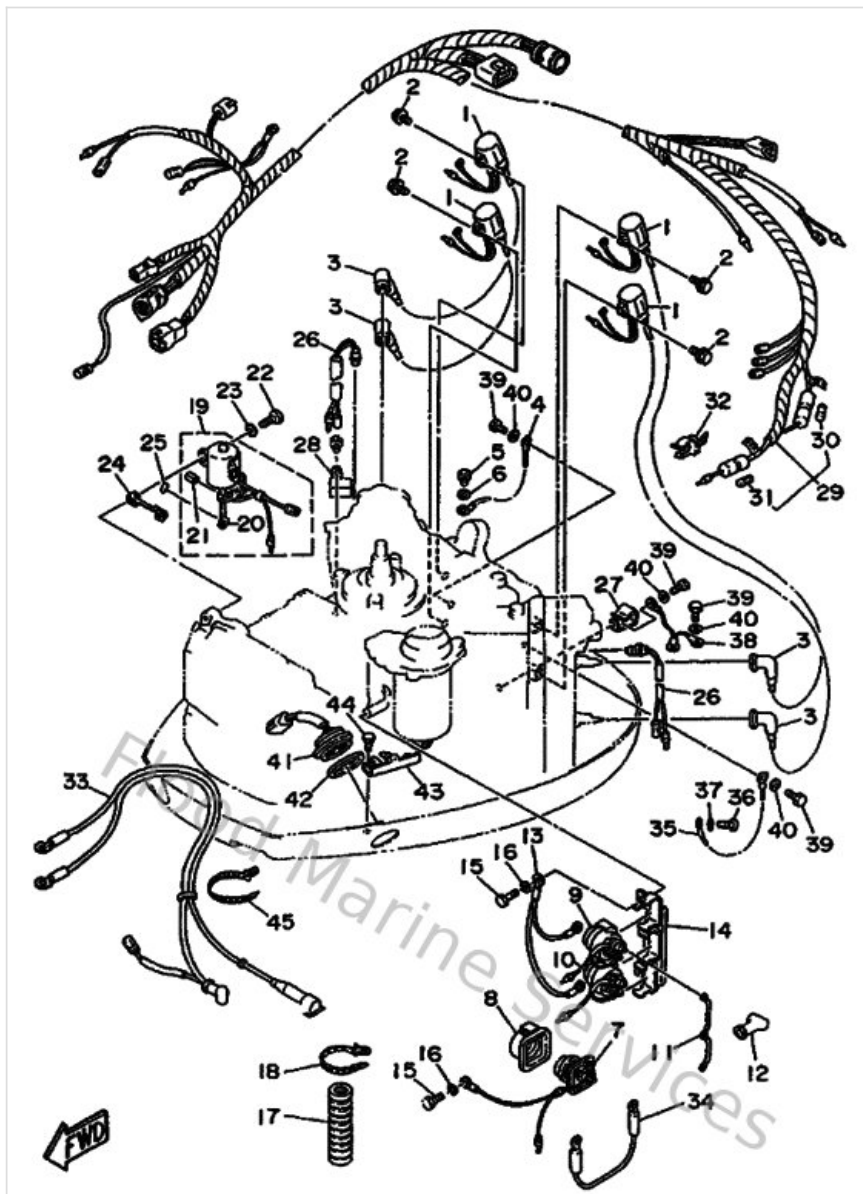
| Ref | Part | |
|-----|---|-------------------------|
| 1 | 663453760094 Guide, seal damper | Buy now |
| 2 | 688453750000 Damper, seal 2 | Buy now |
| 3 | 688452140200 Cover, water inlet | Buy now |
| 4 | 688452150200 Cover, water inlet | Buy now |
| 7 | 6L6453710000 Tab-trim | Buy now |
| 13 | 6E5443650000 Damper, water seal 1 | Buy now |
| 14 | 6E5443120000 Cover, water pump housing | Buy now |
| 15 | 6E5443660000 Damper, water seal 2 | Buy now |
| 16 | 6E5443612000 Tube, water | Buy now |
| 19 | 6E5835580000 End, nipple | Buy now |
| 21 | 6E5459870100 Spacer 1 | Buy now |
| 22 | 688459970100 Spacer 2 | Buy now |
| 26 | 6L6459720098 Propeller (ss 3x13"x21"-kl) | Buy now |

Partie Electrique 1



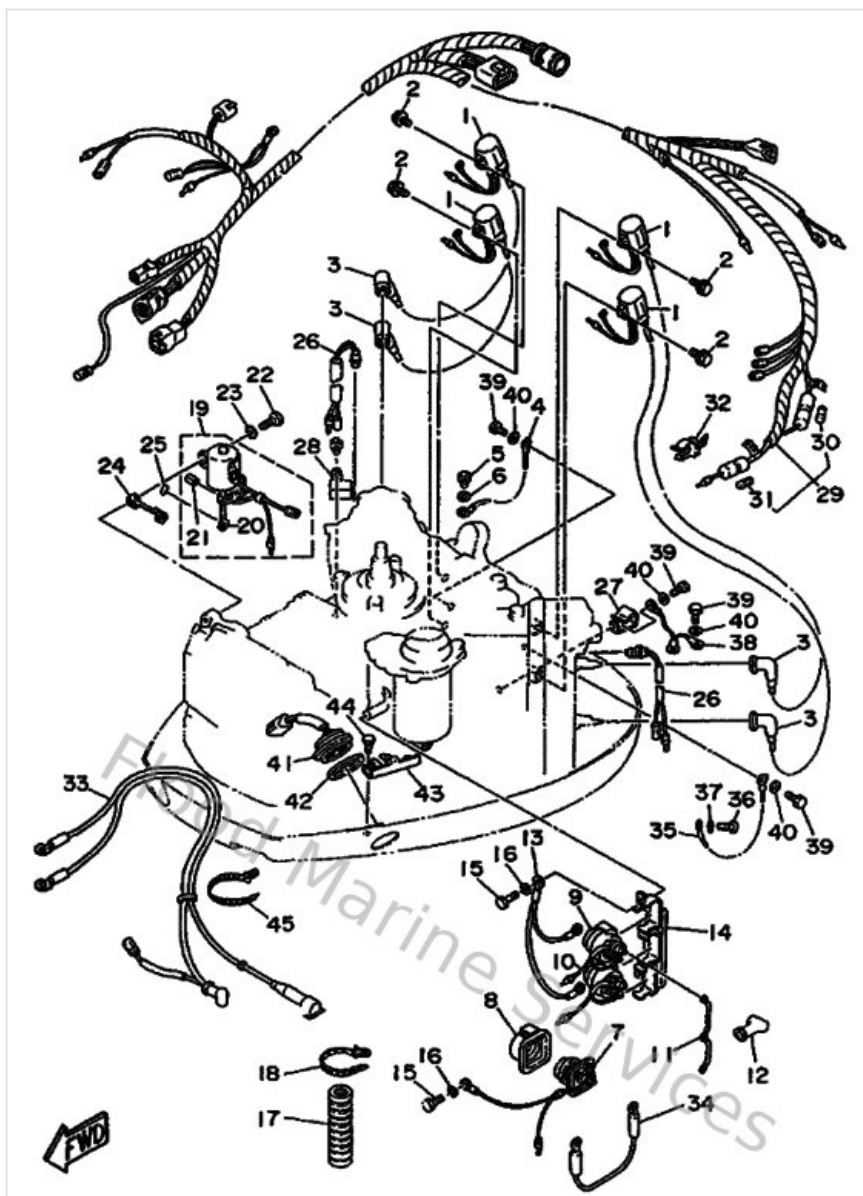
| Ref | Part | |
|-----|--|-------------------------|
| 1 | 6N785542008D Bracket | Buy now |
| 2 | 6A0823170000 Damper, ignition coil | Buy now |
| 3 | 624425420000 Collar | Buy now |
| 5 | 6N7855400100 C.d.i. unit assembly | Buy now |
| 8 | 6N7855370000 Cover | Buy now |
| 10 | 6N7819480094 Bracket | Buy now |
| 13 | 6R3819601000 Rectifier & regulator assembly | Buy now |
| 16 | 6R3819420000 Cover | Buy now |

Partie Electrique 2



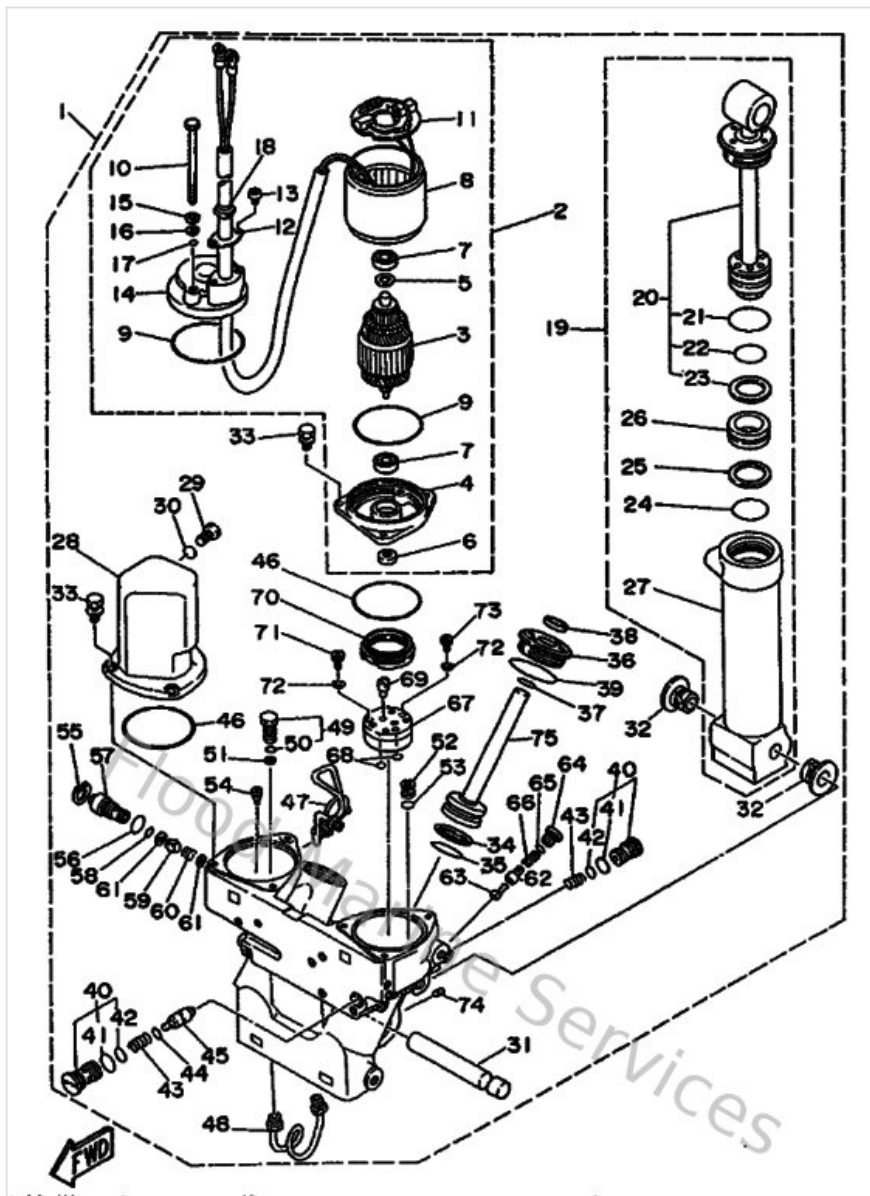
| Ref | Part | |
|-----|--|-------------------------|
| 1 | 6R3855700100 Ignition coil assembly | Buy now |
| 3 | 6G1823702000 Plug cap assembly | Buy now |
| 4 | 662825190000 Wire, earth lead | Buy now |
| 7 | 61A819410000 Starter relay assembly | Buy now |
| 8 | 689819521000 Holder, starter relay | Buy now |
| 9 | 6E5819500000 Relay assembly | Buy now |
| 10 | 6E58195A0100 Relay assembly | Buy now |
| 11 | 6G5871491000 Connector | Buy now |
| 12 | 6G5821190000 Cover, lead wire | Buy now |
| 13 | 6E5821160000 Wire, minus lead | Buy now |
| 14 | 6E5819482200 Bracket | Buy now |
| 17 | 6N7835570000 Tube | Buy now |
| 19 | 6N7861100000 Solenoid | Buy now |
| 20 | 6N7861160000 Wire, pull | Buy now |
| 24 | 6N7861120000 Stay, solenoid | Buy now |

Partie Electrique 2



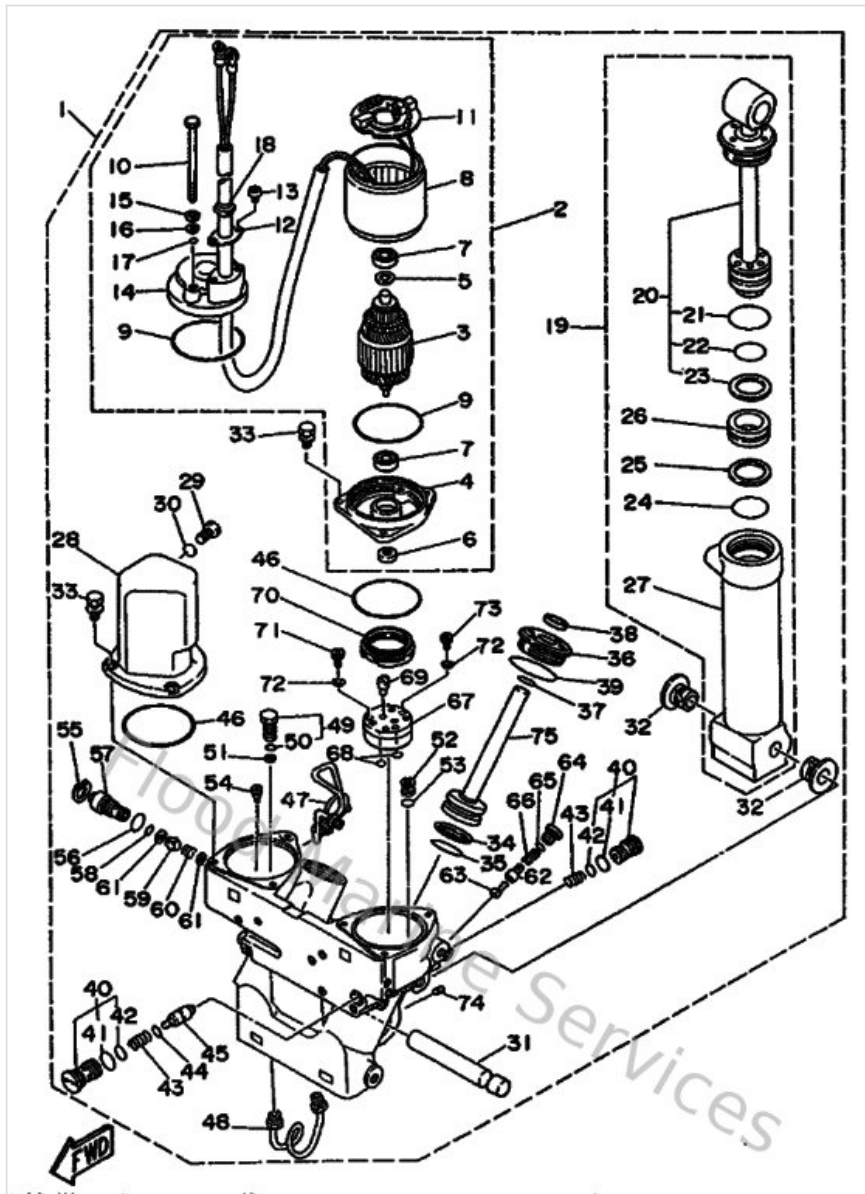
| Ref | Part | |
|-----|---|-------------------------|
| 26 | 688825601000 Thermo switch assembly | Buy now |
| 29 | 6N7825901400 Wire Harness assembly | Buy now |
| 30 | 682821510000 Fuse | Buy now |
| 31 | 705821510000 Fuse (30a) | Buy now |
| 32 | 6G5821520000 Holder, fuse | Buy now |
| 33 | 6N7821050200 Battery cable | Buy now |
| 34 | 6E5821170100 Wire, lead | Buy now |
| 35 | 6R3825190000 Wire, earth lead | Buy now |
| 38 | 6E5825310000 Wire, lead | Buy now |
| 41 | 6R3825630000 Trim & tilt switch assembly | Buy now |
| 42 | 6E5825870000 Gasket | Buy now |
| 43 | 6R3836140000 Bracket | Buy now |

Power Trim & Tilt Assy



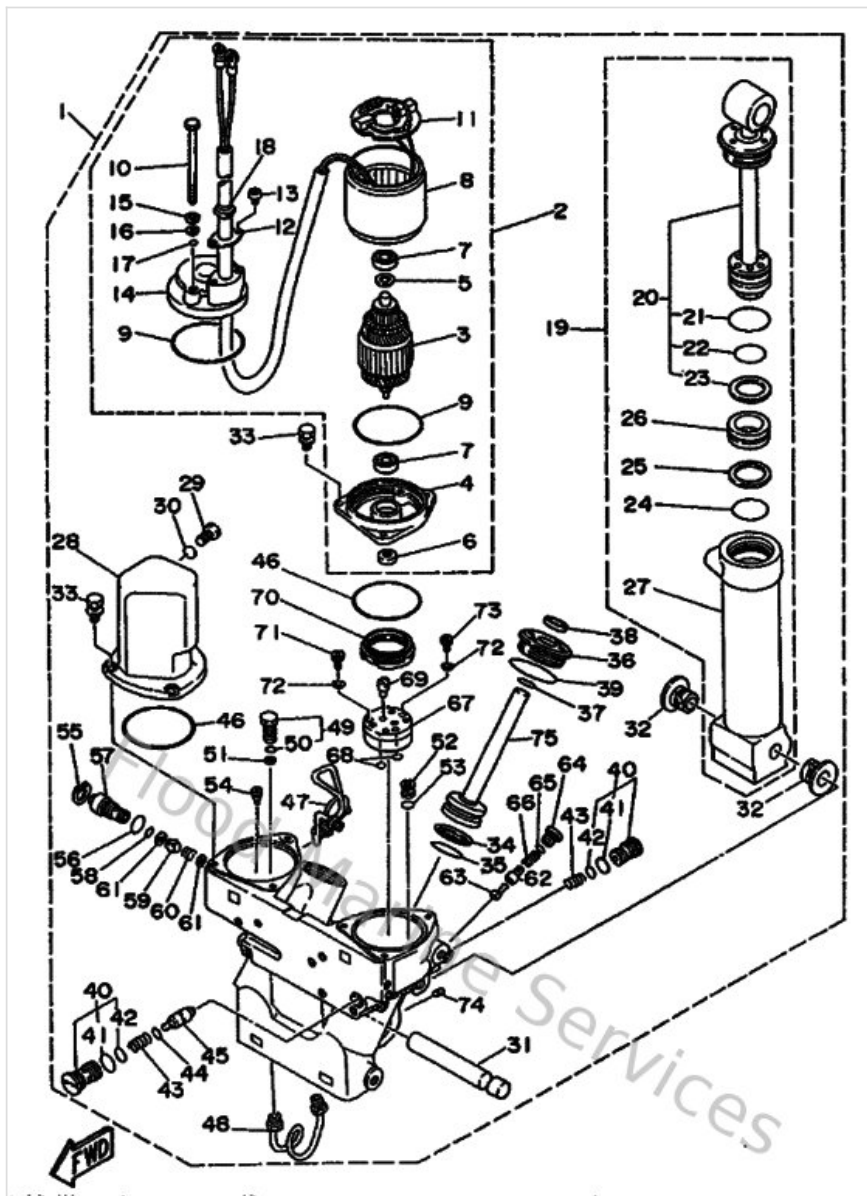
| Ref | Part | |
|-----|--|-------------------------|
| 1 | 6G543800064D Power tilt & trimkit | Buy now |
| 2 | 6G5438800200 Motor assembly | Buy now |
| 4 | 6G5438811000 Frame, End | Buy now |
| 8 | 6G5438040000 Stator assembly | Buy now |
| 9 | 6G5438650000 O-ring | Buy now |
| 10 | 6G5438870000 Bolt | Buy now |
| 11 | 6G5438060000 Brush, Holder assembly | Buy now |
| 12 | 6G5438990000 Plate Stopper | Buy now |
| 13 | 6G5438860000 Bolt | Buy now |
| 14 | 6G5438840000 Frame, Commutator End | Buy now |
| 15 | 6G5438930000 Washer | Buy now |
| 17 | 6G5438670000 O-Ring | Buy now |
| 18 | 6G5438850000 Grommet | Buy now |
| 19 | 6G54380E0100 Tilt Cylinder Assembly | Buy now |
| 20 | 6G5438100000 Piston sub-assembly | Buy now |

Power Trim & Tilt Assy



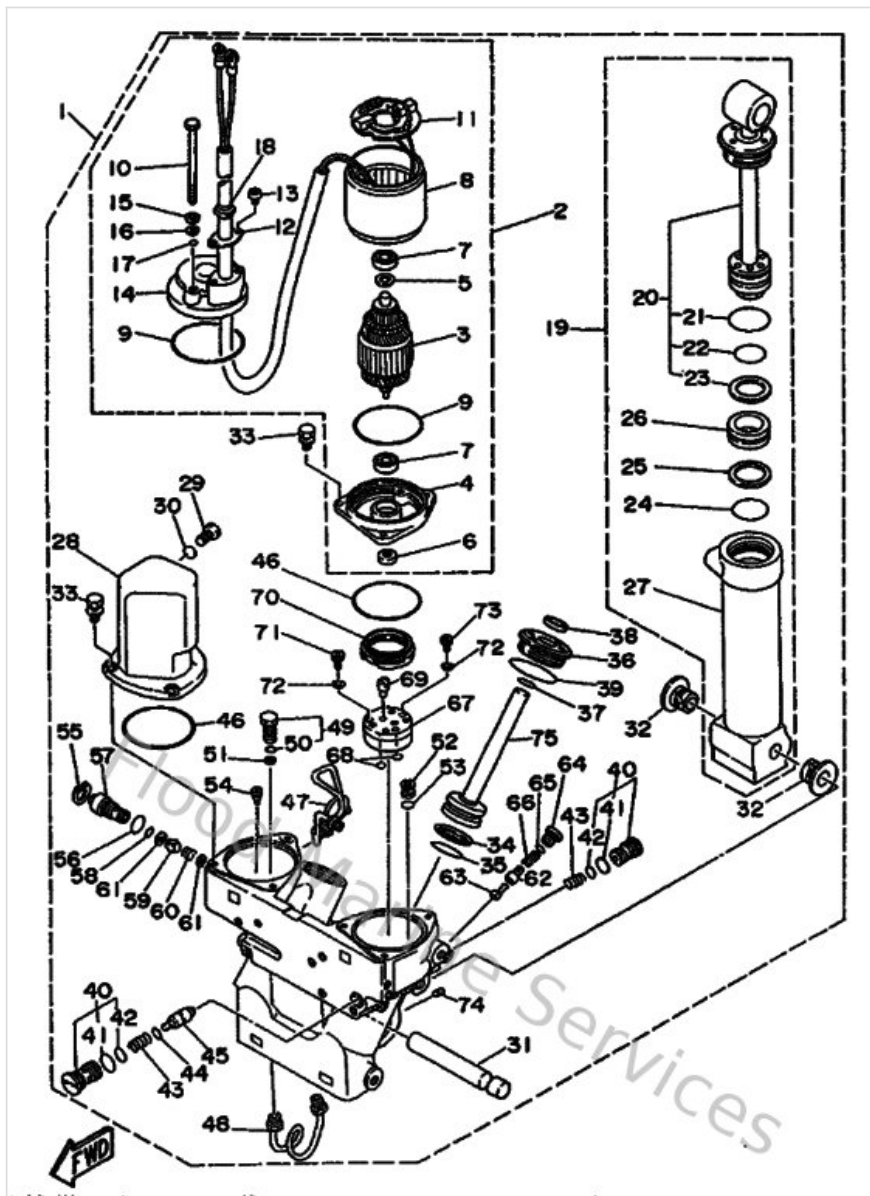
| Ref | Part | |
|-----|--|-------------------------|
| 21 | 6E5438610000 O-ring 1 | Buy now |
| 22 | 6G5438620000 O-ring | Buy now |
| 23 | 6E5438720000 Ring, back-up 2 | Buy now |
| 26 | 6E5438140200 Piston, free | Buy now |
| 29 | 6E5438290000 Plug, reservoir | Buy now |
| 30 | 6E5438630000 O-ring | Buy now |
| 34 | 6G5438740000 Ring, back up | Buy now |
| 35 | 6G5438640000 O-ring 4 | Buy now |
| 36 | 6G5438210100 Screw, trim cylinder end | Buy now |
| 37 | 6E5438650000 O-ring 5 | Buy now |
| 38 | 6E5438220100 Seal, trim dust | Buy now |
| 39 | 6G5438610000 O-ring 1 | Buy now |
| 40 | 6G5438020200 Valve Sub Assembly | Buy now |
| 41 | 6E5438660000 O-ring | Buy now |
| 42 | 6E5438670000 O-ring | Buy now |

Power Trim & Tilt Assy



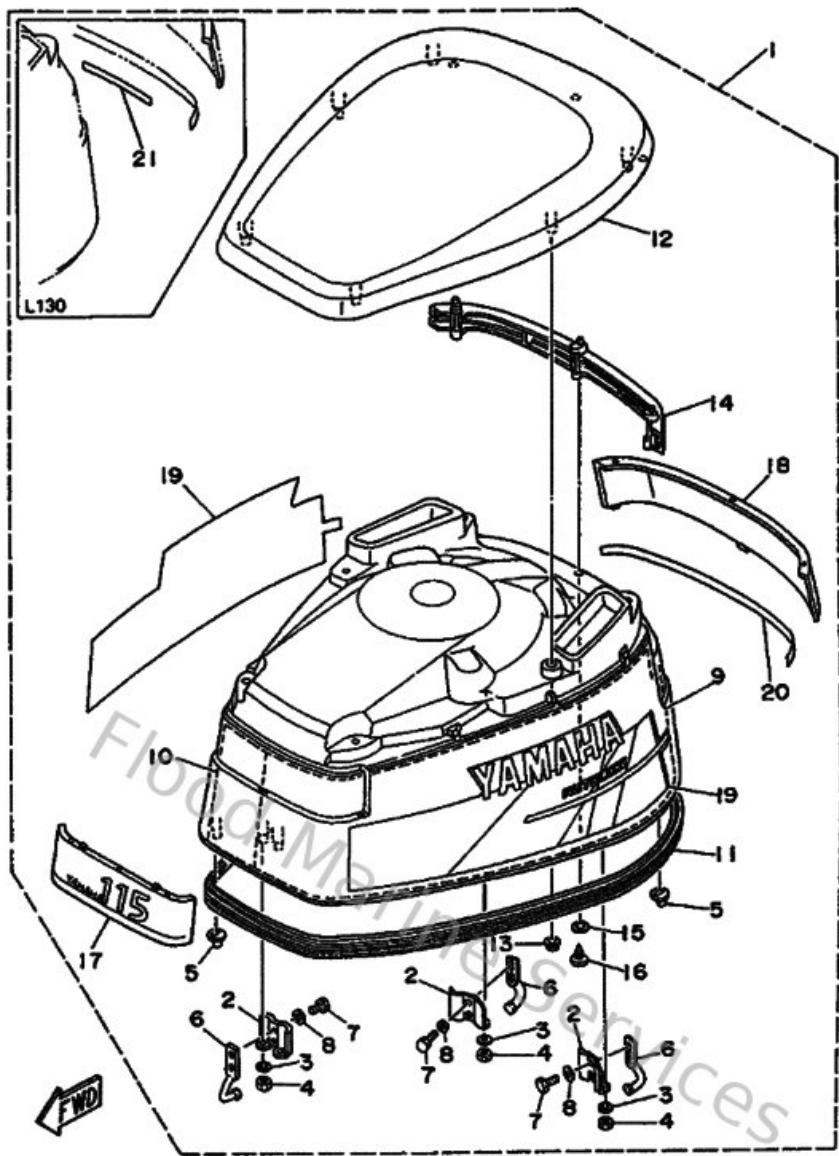
| Ref | Part | |
|-----|--|-------------------------|
| 43 | 6G5438940100 Spring, Shuttle Return | Buy now |
| 44 | 6E5438680000 O-Ring | Buy now |
| 46 | 6E5438690000 O-ring 9 | Buy now |
| 48 | 6G5438330000 Pipe | Buy now |
| 49 | 6G5438090100 Seat, Valve Comp 2 | Buy now |
| 50 | 6E5438960000 O-ring | Buy now |
| 51 | 6G5438160000 Filter 1 | Buy now |
| 52 | 6G5438080200 Seat Valve Comp 1 | Buy now |
| 53 | 6E5438830000 O-ring 10 | Buy now |
| 54 | 6G5438030000 Case Valve Comp | Buy now |
| 55 | 6H1438750000 Ring, snap | Buy now |
| 57 | 6G5438450000 Screw, Manual Release | Buy now |
| 59 | 6E54382A0000 Adaptor 1 | Buy now |
| 60 | 6E5438540100 Spring, manual release | Buy now |
| 61 | 6E5438470000 Seat, manual valve | Buy now |

Power Trim & Tilt Assy



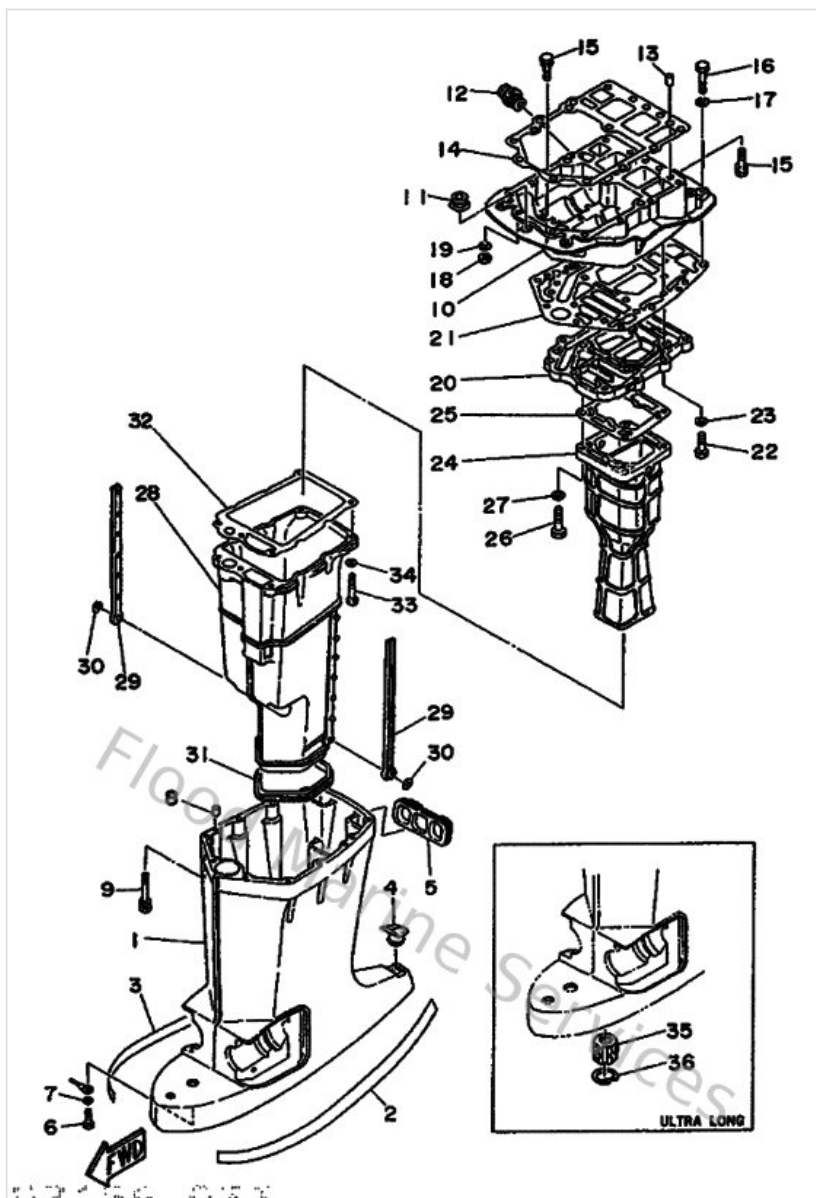
| Ref | Part | |
|-----|--|-------------------------|
| 62 | 6G5438490000 Pin, Valve Support | Buy now |
| 64 | 6G5438420000 Screw, Valve Seat | Buy now |
| 65 | 6G5438660000 O-ring 3 | Buy now |
| 66 | 6E5438240100 Spring Down Relief 2 | Buy now |
| 68 | 6G5438630000 O-ring 3 | Buy now |
| 69 | 64E438310000 Connector, shaft | Buy now |
| 70 | 6G5438170000 Filter 2 | Buy now |
| 71 | 6G5438780100 Bolt, Socket | Buy now |
| 73 | 6G5438880100 Bolt, Socket | Buy now |
| 74 | 6G5438781000 Bolt, Socket | Buy now |
| 75 | 6G5438200100 Piston sub assembly | Buy now |

Top Cowling



| Ref | Part | |
|-----|--|-------------------------|
| 1 | 6N642610A04D Top Cowling assembly | Buy now |
| 2 | 6R3426470000 Holder, clamp band | Buy now |
| 5 | 6R3426620000 Damper | Buy now |
| 6 | 6R3428140000 Hook, clamp | Buy now |
| 9 | 6N7426190000 Damper, form | Buy now |
| 10 | 6N7426270000 Damper, form | Buy now |
| 11 | 6R3426150100 Seal | Buy now |
| 12 | 6N742613008D Molding, air duct | Buy now |
| 14 | 6N7426360000 Louver, 2 | Buy now |
| 17 | 6N7426864000 Emblem, front | Buy now |
| 18 | 6N6426870000 Emblem, rear | Buy now |
| 21 | 6R142678G000 Graphic, Rear | Buy now |

Upper Casing



| Ref | Part | |
|-----|--|-------------------------|
| 1 | 6E545111018D Casing, upper | Buy now |
| 4 | 6E5451550000 Cap | Buy now |
| 5 | 6E5427690000 Seal, rubber | Buy now |
| 10 | 6G5411370294 Guide, exhaust | Buy now |
| 11 | 6E5427240000 Grommet | Buy now |
| 12 | 6G5125810000 Joint, hose | Buy now |
| 14 | 6G545113A100 Gasket, upper casing | Buy now |
| 21 | 6G545114A000 Gasket, upper casing | Buy now |
| 24 | 6L14113200CA Manifold, exhaust | Buy now |
| 25 | 6E541134A000 Gasket, exhaust manifold | Buy now |
| 28 | 6E51471101CA Muffler 1 | Buy now |
| 29 | 6E5147370000 Damper, muffler | Buy now |
| 31 | 6E5451230000 Gasket, muffler | Buy now |
| 32 | 6E541135A000 Gasket, exhaust manifold | Buy now |
| 35 | 6E5453180000 Bushing, drive shaft 3 | Buy now |

Disclaimer

This document is provided for convenience only. It is **not** an official Yamaha publication and is **not supplied, endorsed, or approved** by Yamaha Motor Co., Ltd.

Reasonable efforts are made to keep information accurate; however diagrams, part references, supersessions, descriptions, and applicability may contain errors or omissions. Specifications and part availability may change without notice.

You are responsible for confirming the correct parts for your engine (including model code, year, serial range, and any superseded part numbers) before ordering or fitting.