



Yamaha PSX2SK 2026

Parts Manual

www.floodmarine.co.uk

+44 2882 246 539

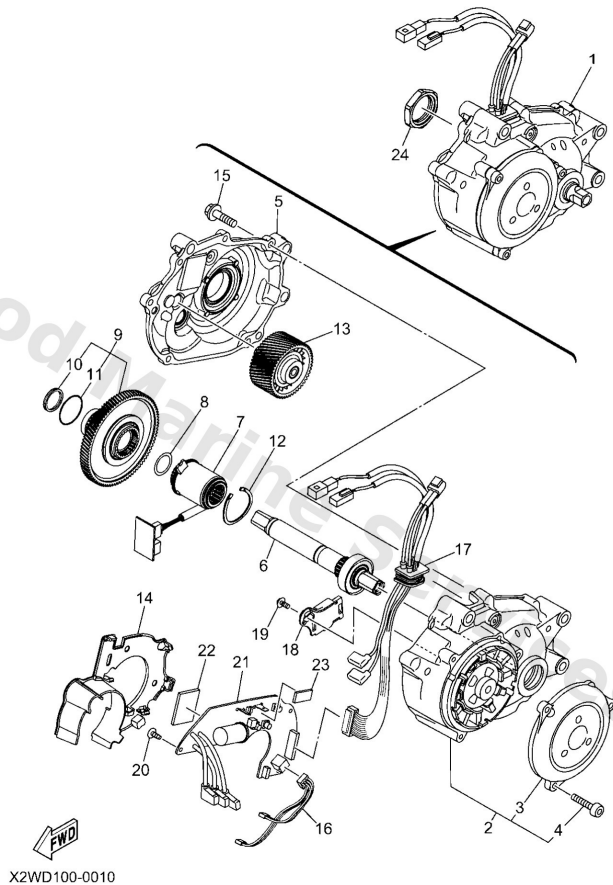
Authorised Yamaha Dealers



Contents

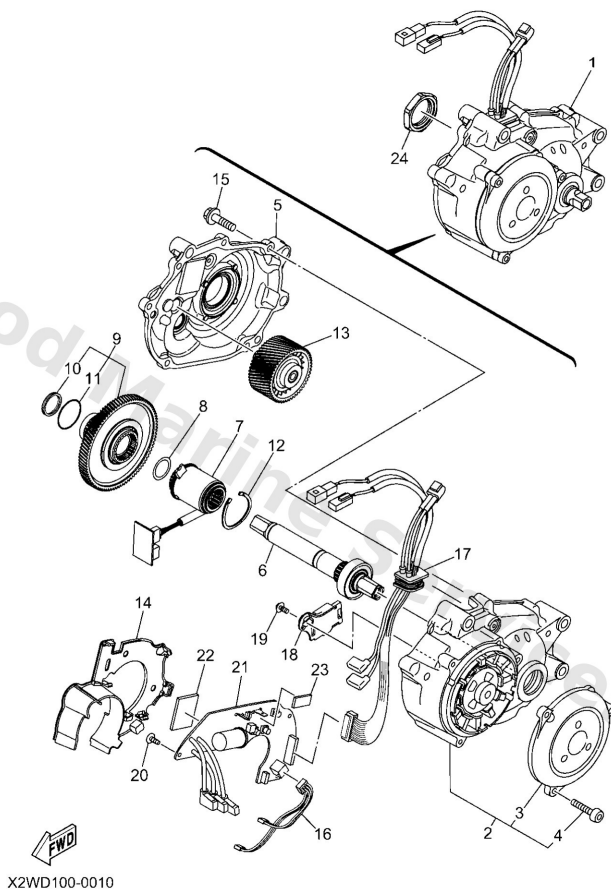
POWER UNIT	3
STEERING HANDLE & CABLE	5

Power Unit



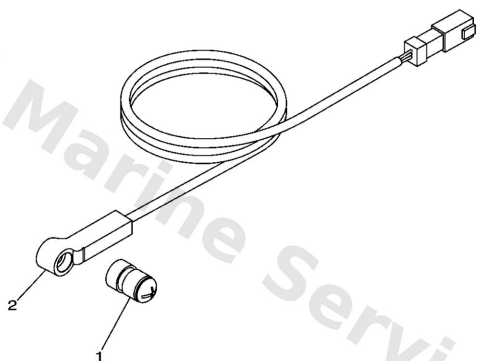
Ref	Part	
1	X2S17061K0 - C2, '26	Buy now
2	X2S8189002 Motor assembly	Buy now
3	X0P8715301 Cover, stator	Buy now
4	9201405016 Bolt, button head(4tr)	Buy now
5	X2S1751000 Housing comp.	Buy now
6	X2S1742100 Axle, drive	Buy now
7	X2S1706200 Torque sensor assembly	Buy now
8	9020617002 Washer, wave	Buy now
9	X2S1630000 Clutch assembly	Buy now
10	9310617001 Oil seal	Buy now
11	9321027003 O-ring	Buy now
12	X2S1662A00 Circlip	Buy now
13	X2S1784000 Driven gear assembly	Buy now
14	X2S1752400 Holder	Buy now
15	9010505029 Bolt, flange	Buy now

Power Unit



Ref	Part	
16	X2S8617100 Wire, lead 1	Buy now
17	X2S86172A1 Wire, lead 2	Buy now
18	X2S1782200 Holder, sensor	Buy now
19	9015904053 Screw, with washer(5h5)	Buy now
20	9016403009 Screw, tapping	Buy now
21	X2S86212K0 -	Buy now
22	X2S8A8B010 Sheet	Buy now
23	X2S8A8B110 Sheet 1	Buy now
24	X941746330 Nut, lock BLACK	Buy now

Steering Handle & Cable




X87B100-T020

Ref	Part	
1	X948145500 Magnet comp. SPOKE MAGNET	Buy now
2	X948167001 Pick-up assembly L500, J CONNECTOR	Buy now

Disclaimer

This document is provided for convenience only. It is **not** an official Yamaha publication and is **not supplied, endorsed, or approved** by Yamaha Motor Co., Ltd.

Reasonable efforts are made to keep information accurate; however diagrams, part references, supersessions, descriptions, and applicability may contain errors or omissions. Specifications and part availability may change without notice.

You are responsible for confirming the correct parts for your engine (including model code, year, serial range, and any superseded part numbers) before ordering or fitting.