



# Yamaha RIGGING - FUEL TANK 2022

## Parts Manual

[www.floodmarine.co.uk](http://www.floodmarine.co.uk)

+44 2882 246 539

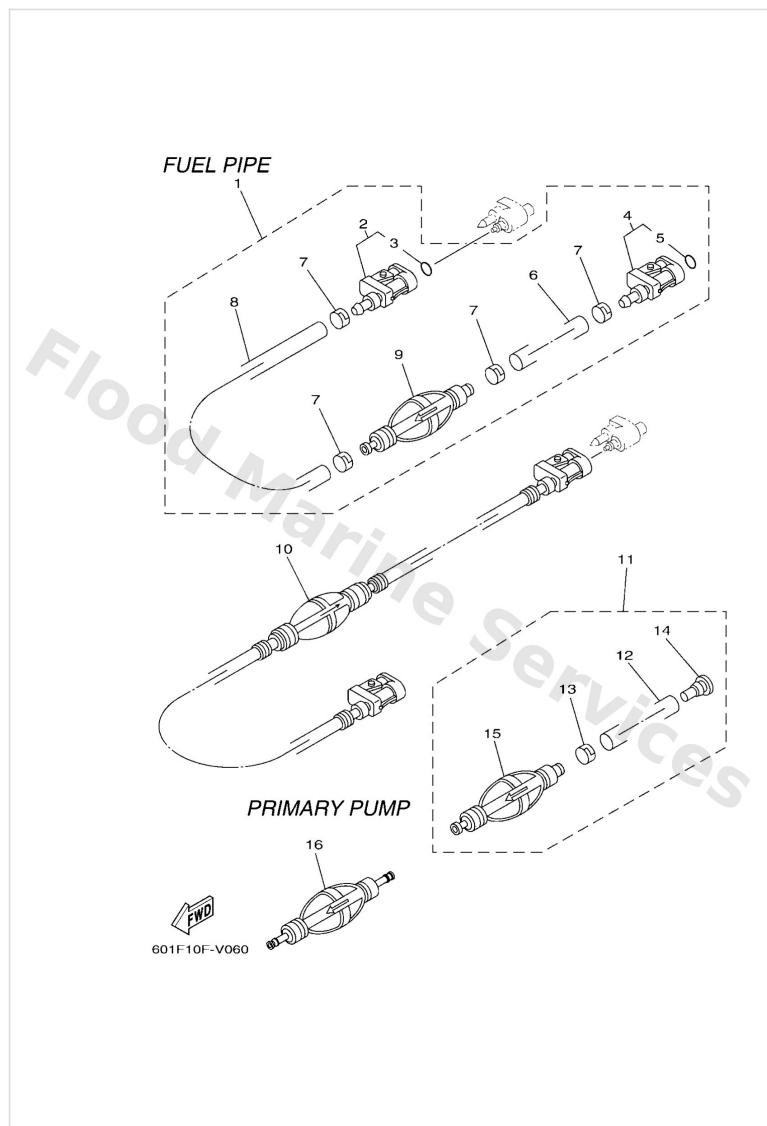
Authorised Yamaha Dealers



# Contents

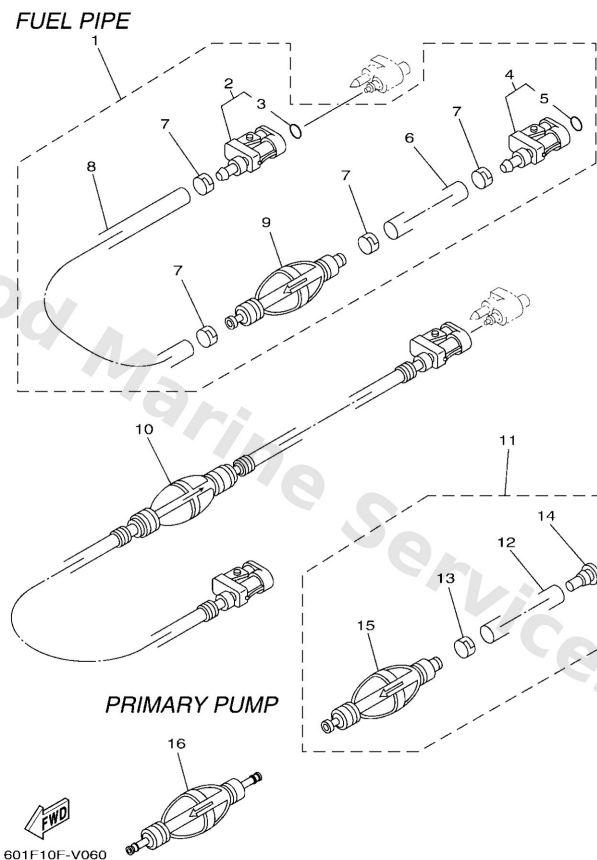
<b>FUEL PIPE</b>	3
<b>FUEL TANK 1</b>	5
<b>FUEL TANK 2</b>	6
<b>FUEL TANK 3</b>	7
<b>FUEL TANK 4</b>	9
<b>FUEL TANK 5</b>	10

# Fuel Pipe



Ref	Part	
1	<a href="#">61J2430604</a> Fuel pipe comp. 1 UR	<a href="#">Buy now</a>
1	<a href="#">6Y12430655</a> Fuel pipe comp. 1 UR	<a href="#">Buy now</a>
2	<a href="#">6G12430505</a> Fuel pipe joint comp. 2	<a href="#">Buy now</a>
3	<a href="#">9321008287</a> O-ring (655)	<a href="#">Buy now</a>
4	<a href="#">6Y12430506</a> Fuel pipe joint comp. 2	<a href="#">Buy now</a>
6	<a href="#">9044511M06</a> Hose (I3000)	<a href="#">Buy now</a>
7	<a href="#">6502435151</a> Band 1	<a href="#">Buy now</a>
8	<a href="#">9044511M05</a> Hose (I1000)	<a href="#">Buy now</a>
9	<a href="#">61J2436000</a> Primer pump assembly FOR 61J-24306-04	<a href="#">Buy now</a>
9	<a href="#">6Y12436052</a> Primer pump assembly FOR 6Y1-24306-55	<a href="#">Buy now</a>
10	<a href="#">6YK2430664</a> Fuel pipe comp. 1	<a href="#">Buy now</a>
11	<a href="#">6Y22430751</a> Fuel pipe comp. 2	<a href="#">Buy now</a>
12	<a href="#">9044513M01</a> Hose (I2050)	<a href="#">Buy now</a>
13	<a href="#">6E52435151</a> Band 1	<a href="#">Buy now</a>
14	<a href="#">9048006M19</a> Grommet (6e3)	<a href="#">Buy now</a>

# Fuel Pipe

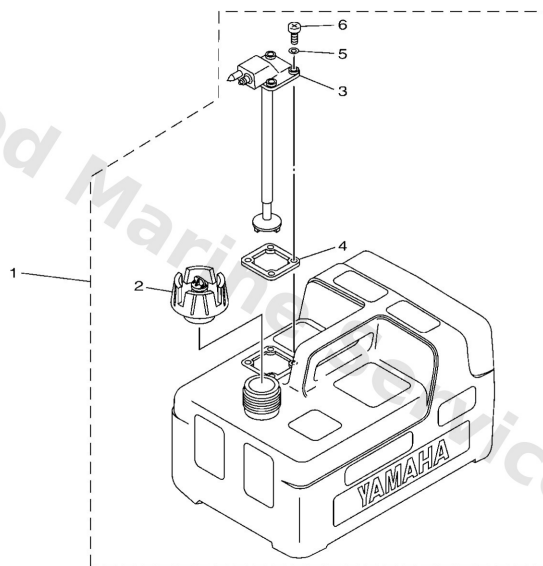


Ref	Part	
15	<a href="#">6Y22436060</a> Primer pump assembly	<a href="#">Buy now</a>
16	<a href="#">6YK2436073</a> Primer pump assembly UR	<a href="#">Buy now</a>
16	<a href="#">6YL2436051</a> - UR	<a href="#">Buy now</a>

Fuel Tank 1

FUEL TANK (12L)

Part No.	Capacity L (US gal)	Material	Description
6YL-24201-07	12 (3.2)	Plastic	with fuel gauge



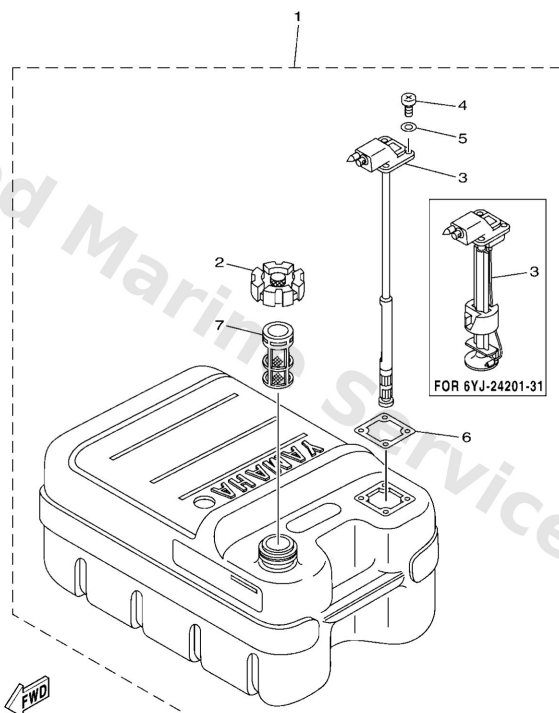
601F10F-T010

Ref	Part	
1	<a href="#">6YL2420107</a> Fuel tank assembly (12l)	<a href="#">Buy now</a>
2	<a href="#">6YK2461010</a> Cap assembly WITHOUT INDICATOR	<a href="#">Buy now</a>
3	<a href="#">6YL2426010</a> Fuel meter assembly	<a href="#">Buy now</a>
4	<a href="#">6YL2426801</a> Gasket, fuel meter	<a href="#">Buy now</a>
5	<a href="#">6YL2432900</a> Seal	<a href="#">Buy now</a>
6	<a href="#">9015705M16</a> Screw, pan head	<a href="#">Buy now</a>

## Fuel Tank 2

### FUEL TANK (24L)

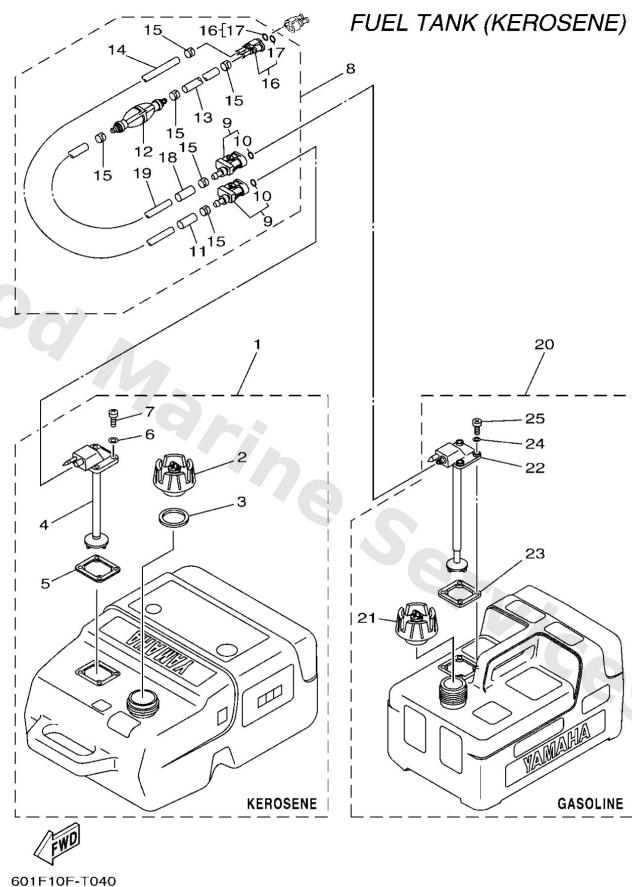
Part No.	Capacity L (US gal)	Material
6YJ-24201-21	24 (6.3)	Plastic
6YJ-24201-31	24 (6.3)	Plastic



601F10F-V020

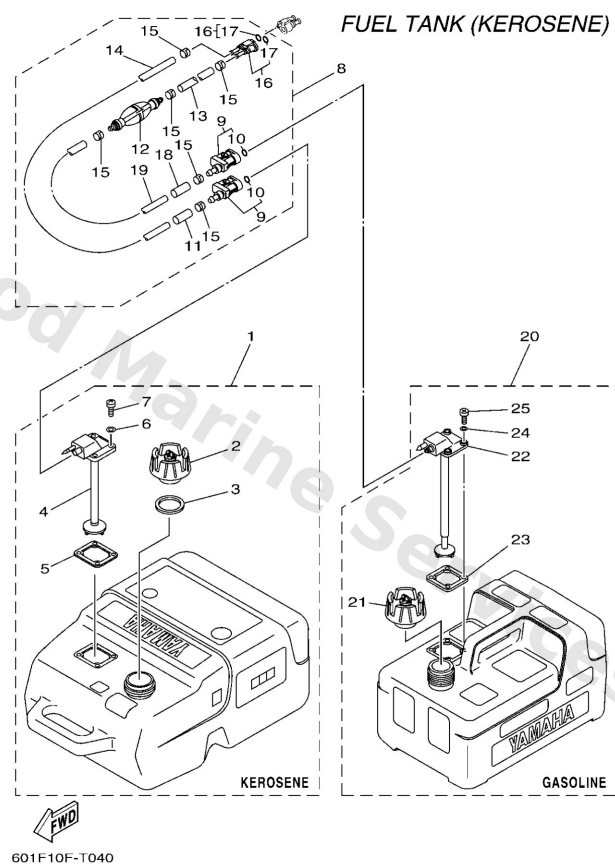
Ref	Part	
1	<a href="#">6YJ2420121</a> Fuel tank comp. UR	<a href="#">Buy now</a>
1	<a href="#">6YJ2420131</a> Fuel tank assembly UR	<a href="#">Buy now</a>
2	<a href="#">6YJ2461001</a> Cap assembly	<a href="#">Buy now</a>
3	<a href="#">6Y12426030</a> Fuel meter assembly	<a href="#">Buy now</a>
3	<a href="#">6YJ2426011</a> Fuel meter assembly FOR 6YJ-24201-21	<a href="#">Buy now</a>
4	<a href="#">9015705M19</a> Screw, pan head	<a href="#">Buy now</a>
5	<a href="#">6Y12432900</a> Seal	<a href="#">Buy now</a>
6	<a href="#">6Y12426801</a> Gasket, fuel meter	<a href="#">Buy now</a>
7	<a href="#">6YJ2416700</a> Strainer	<a href="#">Buy now</a>

## Fuel Tank 3



Ref	Part	
1	<a href="#">6YK2420122</a> - KEROSENE	<a href="#">Buy now</a>
2	<a href="#">6YK2461010</a> Cap assembly WITHOUT INDICATOR	<a href="#">Buy now</a>
3	<a href="#">6YL2464100</a> Gasket, cap 1	<a href="#">Buy now</a>
4	<a href="#">6YK2426010</a> Fuel meter assembly	<a href="#">Buy now</a>
5	<a href="#">6YL2426801</a> Gasket, fuel meter	<a href="#">Buy now</a>
6	<a href="#">6YL2432900</a> Seal	<a href="#">Buy now</a>
7	<a href="#">9015705M16</a> Screw, pan head	<a href="#">Buy now</a>
8	<a href="#">6YK2430604</a> -	<a href="#">Buy now</a>
9	<a href="#">6Y12430506</a> Fuel pipe joint comp. 2	<a href="#">Buy now</a>
10	<a href="#">9321008287</a> O-ring (655)	<a href="#">Buy now</a>
11	<a href="#">6Y12439710</a> Collar	<a href="#">Buy now</a>
12	<a href="#">6112436000</a> Primer pump assembly	<a href="#">Buy now</a>
13	<a href="#">9044511M05</a> Hose (I1000)	<a href="#">Buy now</a>
14	<a href="#">9044511M81</a> Hose (I3000)	<a href="#">Buy now</a>
15	<a href="#">6502435151</a> Band 1	<a href="#">Buy now</a>

## Fuel Tank 3



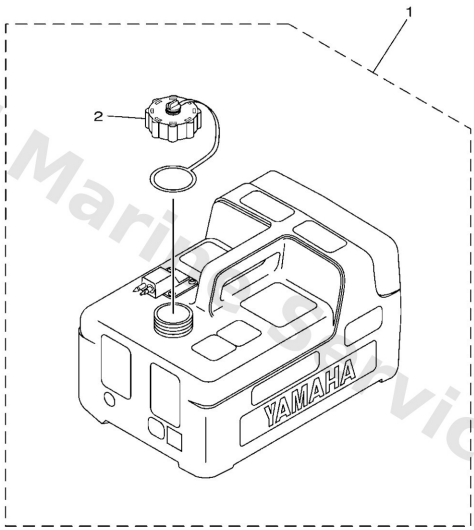
Ref	Part	
16	<a href="#">6802430501</a> Fuel pipe joint comp. 2	<a href="#">Buy now</a>
18	<a href="#">6Y12439700</a> Collar	<a href="#">Buy now</a>
19	<a href="#">9044511M06</a> Hose (I3000)	<a href="#">Buy now</a>
20	<a href="#">6YL2420107</a> Fuel tank assembly (12L) GASOLINE	<a href="#">Buy now</a>
22	<a href="#">6YL2426010</a> Fuel meter assembly	<a href="#">Buy now</a>



# Fuel Tank 4

## FUEL TANK (12L)

Part No.	Capacity L (US gal)	Material	Description
6YL-24201-25	12 (3.2)	Plastic	Meeting EPA/CARB regulations, w/ fuel gauge



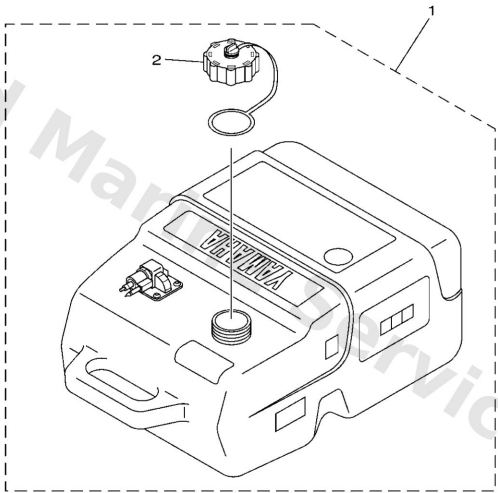
601F10F-T050

Ref	Part	
1	<a href="#">6YL2420125</a> -	<a href="#">Buy now</a>
2	<a href="#">6YL2461010</a> Cap assembly	<a href="#">Buy now</a>

# Fuel Tank 5

FUEL TANK (25L)

Part No.	Capacity L (US gal)	Material	Description
6YK-24201-44	25 (6.6)	Plastic	Meeting EPA/CARB regulations, w/ fuel gauge



601F-10F-R060

Ref	Part	
1	<a href="#">6YK2420144</a> Fuel tank assembly (25l)	<a href="#">Buy now</a>
2	<a href="#">6YL2461010</a> Cap assembly	<a href="#">Buy now</a>

# Disclaimer

This document is provided for convenience only. It is **not** an official Yamaha publication and is **not supplied, endorsed, or approved** by Yamaha Motor Co., Ltd.

Reasonable efforts are made to keep information accurate; however diagrams, part references, supersessions, descriptions, and applicability may contain errors or omissions. Specifications and part availability may change without notice.

You are responsible for confirming the correct parts for your engine (including model code, year, serial range, and any superseded part numbers) before ordering or fitting.