



# Yamaha RIGGING - METER 2012

## Parts Manual

[www.floodmarine.co.uk](http://www.floodmarine.co.uk)

+44 2882 246 539

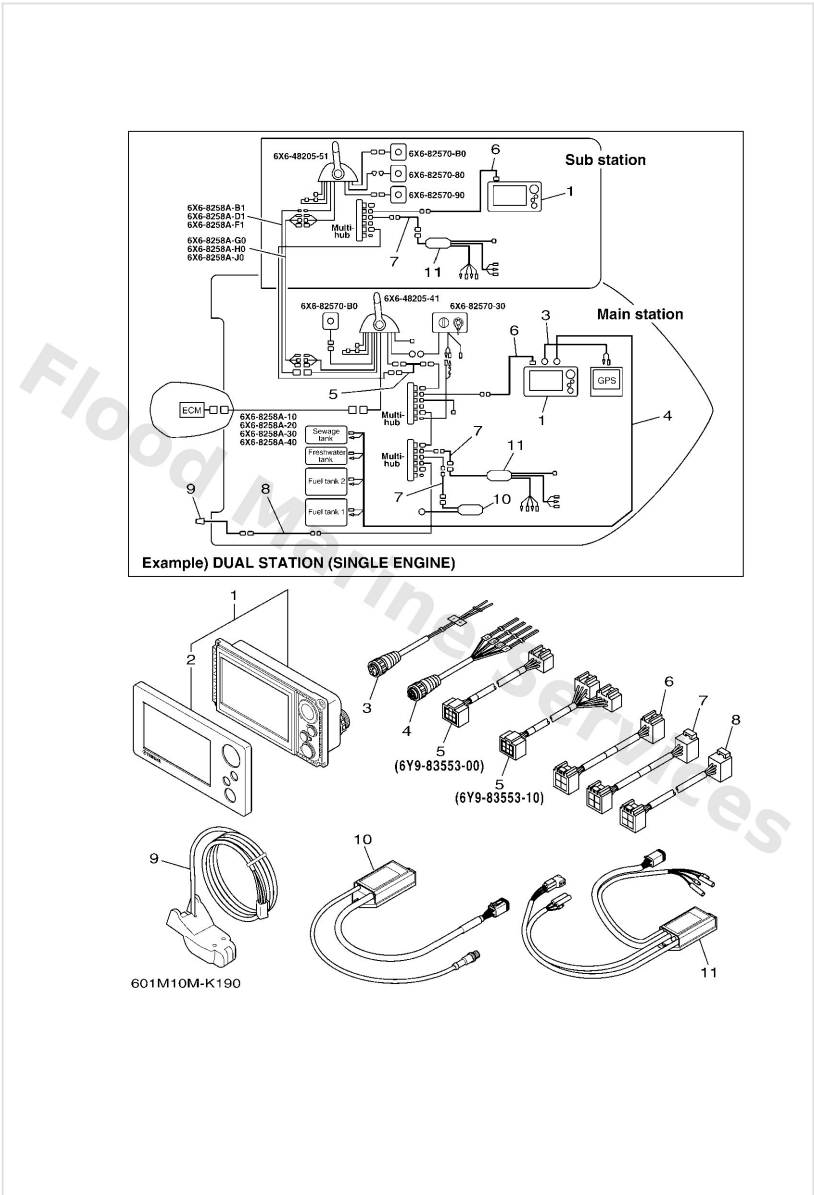
Authorised Yamaha Dealers



# Contents

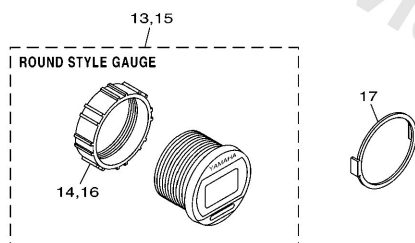
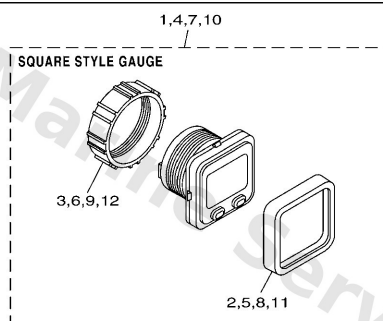
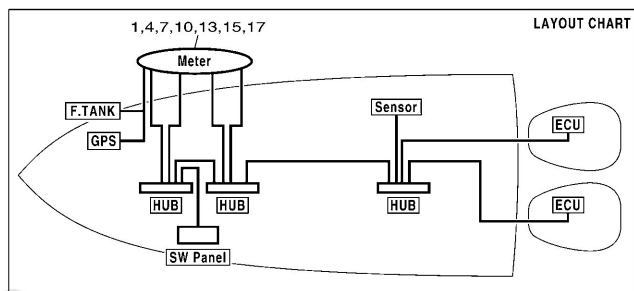
<b>COMMAND LINK PLUS</b>	3
<b>DIGITAL NETWORK GAUGE 1</b>	4
<b>DIGITAL NETWORK GAUGE 2</b>	5
<b>DIGITAL NETWORK GAUGE 3</b>	8
<b>DIGITAL NETWORK GAUGE 4</b>	9
<b>DIGITAL NETWORK GAUGE 5</b>	10
<b>DIGITAL NETWORK GAUGE 6</b>	11
<b>DIGITAL NETWORK GAUGE 7</b>	12
<b>ELECTRICAL</b>	13
<b>METER 1</b>	14
<b>METER 2</b>	15
<b>METER 3</b>	17
<b>METER 4</b>	18
<b>METER 5</b>	19
<b>METER 6</b>	20
<b>METER 7</b>	22
<b>METER 8</b>	23
<b>WIRE HARNESS 1</b>	24
<b>WIRE HARNESS 2</b>	25

Command Link Plus



Ref	Part	
1	<a href="#">6Y98371002</a> Multi display assembly UN	<a href="#">Buy now</a>
2	<a href="#">6Y98351200</a> Cover, front	<a href="#">Buy now</a>
3	<a href="#">6Y98356N00</a> Wire, lead FOR GPS	<a href="#">Buy now</a>
4	<a href="#">6Y98356N10</a> Wire, lead FOR TANKS	<a href="#">Buy now</a>
5	<a href="#">6Y98355300</a> Wire, lead UR 1 STATION	<a href="#">Buy now</a>
5	<a href="#">6Y98355310</a> Main bus y-split harness UR 2 STATION	<a href="#">Buy now</a>
6	<a href="#">6Y98355340</a> Wire, lead UN FOR MULTI DISPLAY	<a href="#">Buy now</a>
7	<a href="#">6Y98355350</a> Wire, lead UN FOR INTERFACE UNIT	<a href="#">Buy now</a>
8	<a href="#">6Y98355360</a> Wire, lead FOR SENSOR ASSY	<a href="#">Buy now</a>
9	<a href="#">6Y98368800</a> Sensor assembly	<a href="#">Buy now</a>
10	<a href="#">6Y98A2D000</a> Interface Unit GATEWAY	<a href="#">Buy now</a>
11	<a href="#">6Y98A2D010</a> Analog gauge interface UN ANALOGUE GAUGE	<a href="#">Buy now</a>

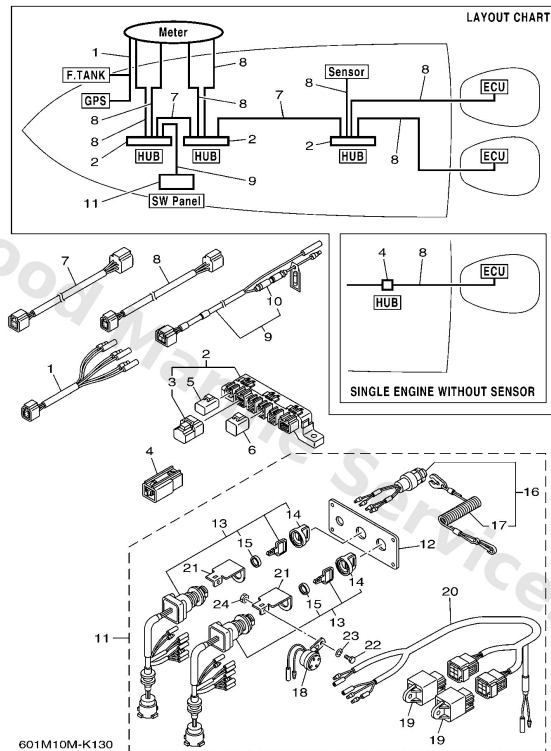
# Digital Network Gauge 1



6011100-G880

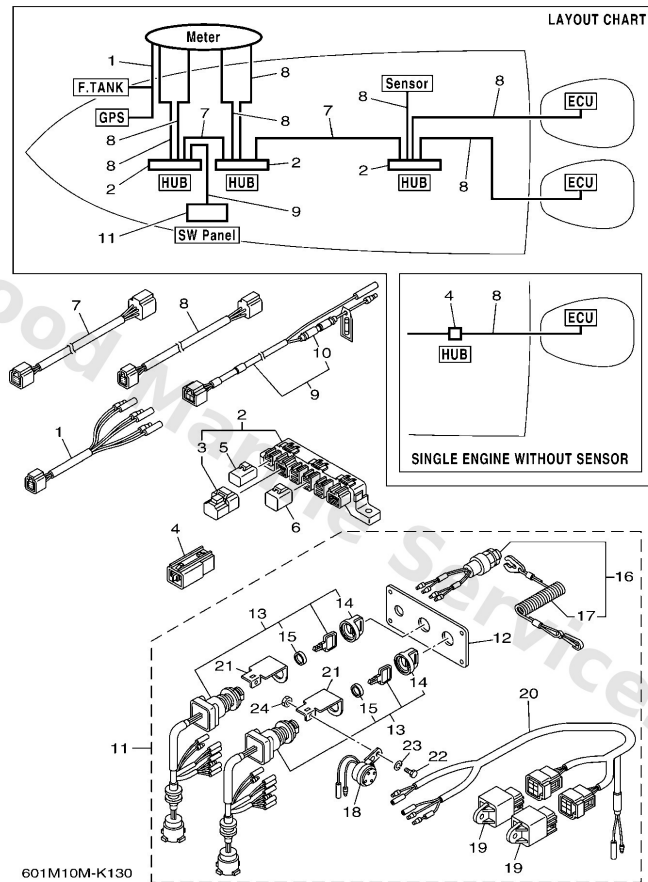
Ref	Part	
1	<a href="#">6Y88350T01</a> Tachometer, sq	<a href="#">Buy now</a>
2	<a href="#">6Y88336300</a> Bezel, square	<a href="#">Buy now</a>
3	<a href="#">6Y88438300</a> Nut, ring	<a href="#">Buy now</a>
4	<a href="#">6Y88350S01</a> Speedometer Sq	<a href="#">Buy now</a>
7	<a href="#">6Y88350F01</a> Fl mgt meter, sq FUEL MANAGEMENT	<a href="#">Buy now</a>
10	<a href="#">6Y88350001</a> S&fm meter, sq SPEED & FUEL	<a href="#">Buy now</a>
13	<a href="#">6Y88350T11</a> Tachometer, rd	<a href="#">Buy now</a>
15	<a href="#">6Y88350011</a> S & fm meter, rd SPEED & FUEL	<a href="#">Buy now</a>
17	<a href="#">6Y88351400</a> Plate, fitting UN	<a href="#">Buy now</a>

## Digital Network Gauge 2



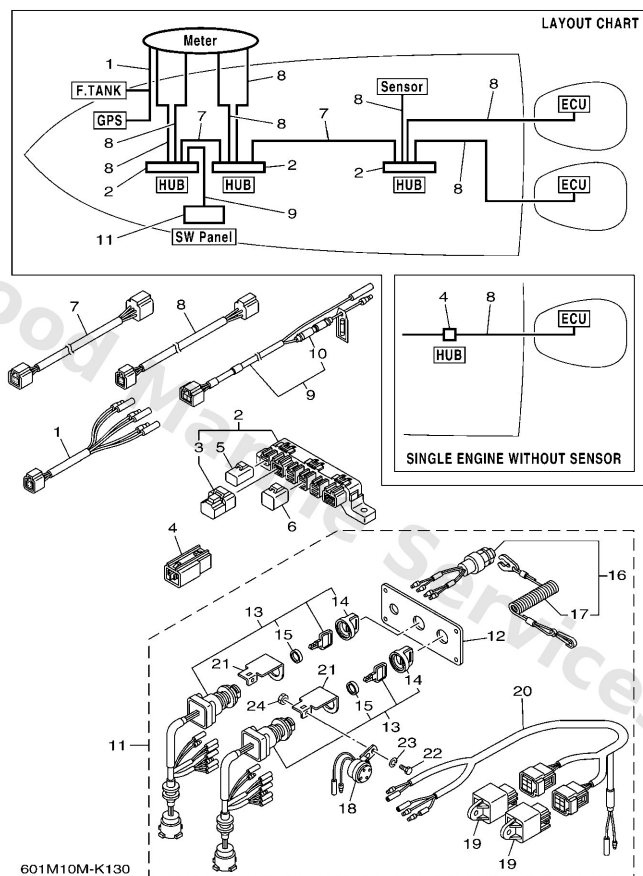
Ref	Part	
1	<a href="#">6Y88356N01</a> Lead, fuel tank & gps sender	<a href="#">Buy now</a>
2	<a href="#">6Y88192001</a> Multi-hub UN	<a href="#">Buy now</a>
3	<a href="#">6Y88537101</a> End of line resister	<a href="#">Buy now</a>
4	<a href="#">6Y88192011</a> Single-hub	<a href="#">Buy now</a>
5	<a href="#">6Y88258201</a> Red cap 1 (2pin) UN	<a href="#">Buy now</a>
6	<a href="#">6Y88258211</a> White cap 1 (4pin) UN	<a href="#">Buy now</a>
7	<a href="#">6Y88255301</a> Main bus wire 0.3m-1ft UR	<a href="#">Buy now</a>
7	<a href="#">6Y88255311</a> Main bus wire 4.6m (15ft) UR	<a href="#">Buy now</a>
7	<a href="#">6Y88255321</a> Main bus wire 6.1m (20ft) UR	<a href="#">Buy now</a>
7	<a href="#">6Y88255331</a> Main bus wire 7.6m (25ft) UR	<a href="#">Buy now</a>
7	<a href="#">6Y88255341</a> Main bus wire 9.1m (30ft) UR	<a href="#">Buy now</a>
7	<a href="#">6Y88255350</a> Main bus wire 3.0m-10ft UR	<a href="#">Buy now</a>
8	<a href="#">6Y88252101</a> 1ft pigtail bus UR	<a href="#">Buy now</a>
8	<a href="#">6Y88252111</a> Pigtail bus wire 0.6m-2ft UR	<a href="#">Buy now</a>
8	<a href="#">6Y88252121</a> Pigtail bus wire 0.9m-3ft UR	<a href="#">Buy now</a>

## Digital Network Gauge 2



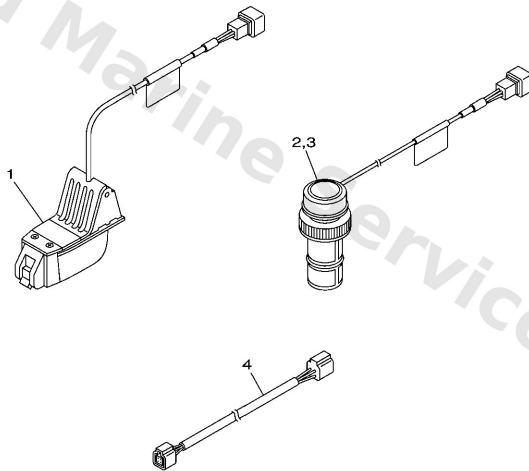
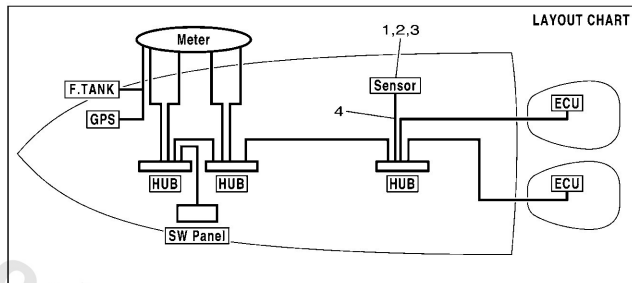
Ref	Part	
8	<a href="#">6Y88252131</a> Pigtail bus wire 1.8m-6ft UR	<a href="#">Buy now</a>
8	<a href="#">6Y88252141</a> 9ft pigtail bus UR	<a href="#">Buy now</a>
8	<a href="#">6Y88252151</a> Pigtail bus wire 3.6m-12ft UR	<a href="#">Buy now</a>
9	<a href="#">6Y88355301</a> 8ft power wire	<a href="#">Buy now</a>
10	<a href="#">6G18215100</a> Fuse (10a)	<a href="#">Buy now</a>
11	<a href="#">6Y88257002</a> Panel switch assembly	<a href="#">Buy now</a>
12	<a href="#">6Y88257101</a> Plate, panel switch	<a href="#">Buy now</a>
13	<a href="#">6Y88251002</a> Main switch assembly	<a href="#">Buy now</a>
14	<a href="#">6768257700</a> Cap, key	<a href="#">Buy now</a>
15	<a href="#">7038253200</a> Cap	<a href="#">Buy now</a>
16	<a href="#">6K18257500</a> Engine stop switch assembly	<a href="#">Buy now</a>
17	<a href="#">6828255600</a> Lanyard, stop switch	<a href="#">Buy now</a>
18	<a href="#">6R58338300</a> Buzzer	<a href="#">Buy now</a>
19	<a href="#">68V8195000</a> Relay assembly	<a href="#">Buy now</a>
20	<a href="#">6Y88250700</a> Lead, ignition switch relay	<a href="#">Buy now</a>

## Digital Network Gauge 2



Ref	Part	
21	<a href="#">64D8258100</a> Stay, cord clamp	<a href="#">Buy now</a>
22	<a href="#">9730305012</a> Bolt, hexagon	<a href="#">Buy now</a>
23	<a href="#">9290305100</a> Ybs67-5 washer, spring	<a href="#">Buy now</a>
24	<a href="#">9530305700</a> Nut (656)	<a href="#">Buy now</a>

## Digital Network Gauge 3



6Y82110-E030

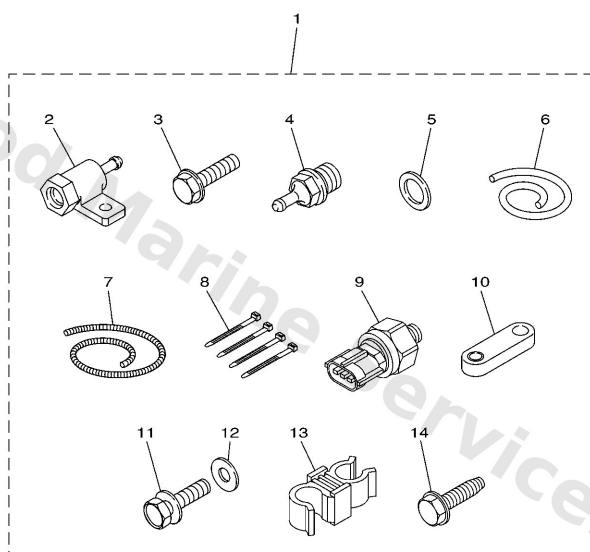
Ref	Part	
1	<a href="#">6Y88368801</a> Transom Mount Triducer	<a href="#">Buy now</a>
2	<a href="#">6Y88368811</a> Plastic Thru-Hull Triducer PLASTIC BODY	<a href="#">Buy now</a>
3	<a href="#">6Y88368820</a> Bronze Thru-Hull Triducer BRONZE BODY	<a href="#">Buy now</a>
4	<a href="#">6Y88252101</a> 1ft pigtail bus UR	<a href="#">Buy now</a>
4	<a href="#">6Y88252111</a> Pigtail bus wire 0.6m-2ft UR	<a href="#">Buy now</a>
4	<a href="#">6Y88252121</a> Pigtail bus wire 0.9m-3ft UR	<a href="#">Buy now</a>
4	<a href="#">6Y88252131</a> Pigtail bus wire 1.8m-6ft UR	<a href="#">Buy now</a>
4	<a href="#">6Y88252141</a> 9ft pigtail bus UR	<a href="#">Buy now</a>
4	<a href="#">6Y88252151</a> Pigtail bus wire 3.6m-12ft UR	<a href="#">Buy now</a>



# Digital Network Gauge 4

## Cooling water pressure sensor

Part No.	Remarks
60V-8A4L0-12	Fuel injected F30-F115, HPDI



601M10M-J150

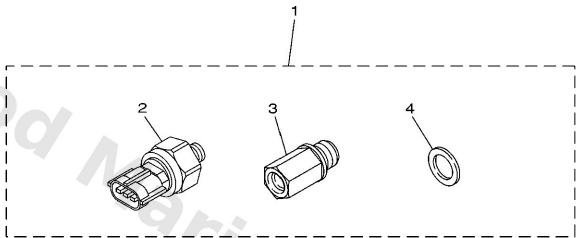
Ref	Part	
1	<a href="#">60V8A4L012</a> Sensor, module	<a href="#">Buy now</a>
2	<a href="#">60V8366D00</a> Adaptor, input	<a href="#">Buy now</a>
3	<a href="#">9589506025</a> Bolt, flange deep recess	<a href="#">Buy now</a>
4	<a href="#">60V8366700</a> Sender, water pressure	<a href="#">Buy now</a>
5	<a href="#">9043014115</a> Gasket (663)	<a href="#">Buy now</a>
6	<a href="#">9044507018</a> Hose (I1457)	<a href="#">Buy now</a>
7	<a href="#">9044707015</a> Hose, cover (l: 1300mm)	<a href="#">Buy now</a>
8	<a href="#">9046511M10</a> Clamp	<a href="#">Buy now</a>
9	<a href="#">6AW8366B00</a> Sensor, water pressure	<a href="#">Buy now</a>
10	<a href="#">60V8257V00</a> Plate, connector	<a href="#">Buy now</a>
11	<a href="#">9709506016</a> Bolt, hexagon deep recess	<a href="#">Buy now</a>
12	<a href="#">9299506600</a> Washer, plain (646)	<a href="#">Buy now</a>
13	<a href="#">9046409021</a> Clamp	<a href="#">Buy now</a>
14	<a href="#">9010906M81</a> Bolt	<a href="#">Buy now</a>

# Digital Network Gauge 5

## Cooling water pressure sensor

Part No.	Remarks
69J-8A4L0-20	F200-F225 (3.3L)
63P-8A4L0-00	F150, F200-F250 (3.3L-VCT), F225-F300 (4.2L)

\* For F350/F300 (V8), standard installed from factory.



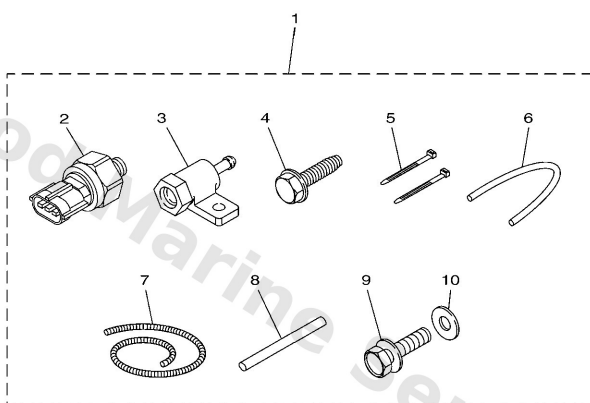
Ref	Part	
1	<a href="#">63P8A4L000</a> Sensor, module UR	<a href="#">Buy now</a>
1	<a href="#">69J8A4L020</a> Sensor, Module UR	<a href="#">Buy now</a>
2	<a href="#">6AW8366B00</a> Sensor, water pressure	<a href="#">Buy now</a>
3	<a href="#">63P8366C00</a> Adaptor, input FOR 63P-8A4L0-00	<a href="#">Buy now</a>
3	<a href="#">69J8366C00</a> Adaptor, input FOR 69J-8A4L0-20	<a href="#">Buy now</a>
4	<a href="#">9043014115</a> Gasket (663)	<a href="#">Buy now</a>

601M10M-K160

# Digital Network Gauge 6

## Speed sensor

Part No.	Remarks
60V-BA4L1-11	Fuel injected F30-F300 (V6), HPDI



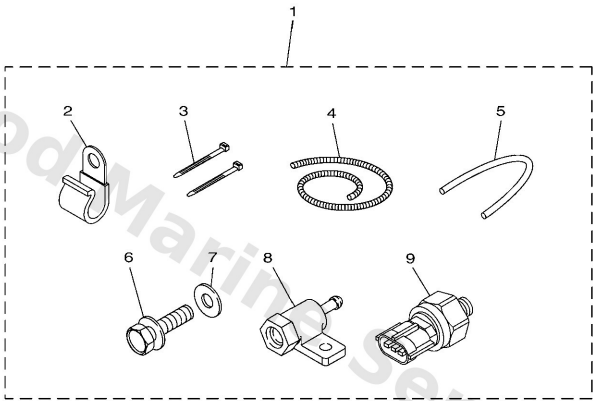
601M10M-K170

Ref	Part	
1	<a href="#">60V8A4L111</a> Sensor, module 1	<a href="#">Buy now</a>
2	<a href="#">6AW8366B00</a> Sensor, water pressure	<a href="#">Buy now</a>
3	<a href="#">60V8366D00</a> Adaptor, input	<a href="#">Buy now</a>
4	<a href="#">9010906M81</a> Bolt	<a href="#">Buy now</a>
5	<a href="#">9046511M10</a> Clamp	<a href="#">Buy now</a>
6	<a href="#">9044507017</a> Hose (I550)	<a href="#">Buy now</a>
7	<a href="#">9044707013</a> Hose, cover (I: 700mm)	<a href="#">Buy now</a>
8	<a href="#">60V4262900</a> Seal	<a href="#">Buy now</a>
9	<a href="#">9709506016</a> Bolt, hexagon deep recess	<a href="#">Buy now</a>
10	<a href="#">9299506600</a> Washer, plain (646)	<a href="#">Buy now</a>

# Digital Network Gauge 7

## Speed sensor

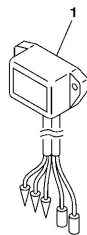
Part No.	Remarks
6AW-8A4L1-01	F350/F300 (V8) * Additional transom pitot tube (688-83556-01) and pressure tube(688-83557-00) required.



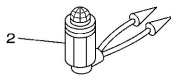
601M10M-K180

Ref	Part	
1	<a href="#">6AW8A4L101</a> Sensor, module 1	<a href="#">Buy now</a>
2	<a href="#">9046506M86</a> Clamp	<a href="#">Buy now</a>
3	<a href="#">9046514M66</a> Clamp	<a href="#">Buy now</a>
4	<a href="#">9044707015</a> Hose, cover (l: 1300mm)	<a href="#">Buy now</a>
5	<a href="#">9044507018</a> Hose (l:1457)	<a href="#">Buy now</a>
6	<a href="#">9709506016</a> Bolt, hexagon deep recess	<a href="#">Buy now</a>
7	<a href="#">9299506600</a> Washer, plain (646)	<a href="#">Buy now</a>
8	<a href="#">60V8366D00</a> Adaptor, input	<a href="#">Buy now</a>
9	<a href="#">6AW8366B00</a> Sensor, water pressure	<a href="#">Buy now</a>

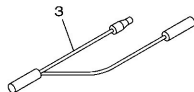
CHARGE WARNING UNIT



All electrical start models  
with a rectifier/ regulator

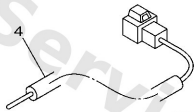


IMMOBILIZER POWER  
DISTRIBUTION WIRE



For fuel injection F30-F/FL115A  
multi-application w/ immobilizer

BATTERY WIRING



Part No.	Length	Remarks
68F-81949-02	2.7 m 9 ft	For HPDI, F150 and above * Except F225 - F300 off- shore (V6-4.2L)
69J-81949-02	3.8 m 13 ft	
6CE-81949-00	3.8 m 13 ft	For F225, F250, F300 off- shore (V6-4.2L) special

601M10M-K110

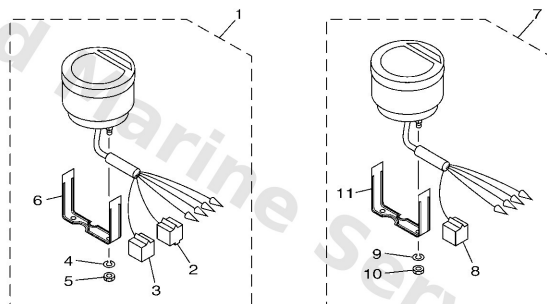
Ref	Part	
1	<a href="#">6978190160</a> -	<a href="#">Buy now</a>
2	<a href="#">6638430101</a> Pilot lamp ass'y 12V	<a href="#">Buy now</a>
3	<a href="#">6H58131500</a> Wire, lead	<a href="#">Buy now</a>
4	<a href="#">68F8194902</a> Wire, lead UR	<a href="#">Buy now</a>
4	<a href="#">69J8194902</a> Wire, lead (isolator, 3.8m ) UR	<a href="#">Buy now</a>
4	<a href="#">6CE8194900</a> Wire, lead (isolator cable) UR	<a href="#">Buy now</a>

# Meter 1

## DIGITAL TACHOMETER

Ref. No.	Description	Part No.	Applicable model
1	Multifunction	6Y5-8350T-04	250G,L250G
7	Multifunction w/o "Check engine" and "Water in fuel" indicators	6Y5-8350T-91	Above 40 (3-cyl) w/ oil injection & PTT (except 250G/L250G), Above F30 w/ PTT (*1)

(\*1) Mechanical RC



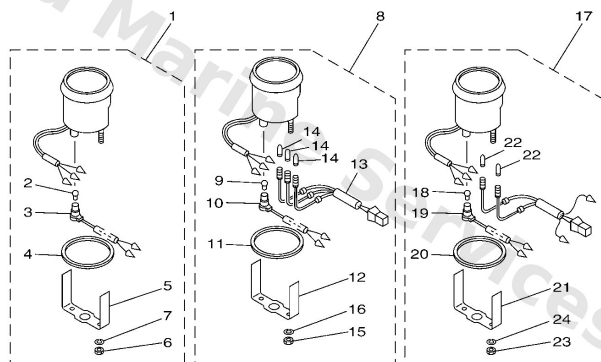
601M10M-L010

Ref	Part	
1	<a href="#">6Y58350T04</a> Digital tachometer assembly	<a href="#">Buy now</a>
2	<a href="#">9E45004433</a> Housing, connector (m-4-w) M-4-W	<a href="#">Buy now</a>
3	<a href="#">9E45004533</a> Housing, f-4-w(5pcs) F-4-W	<a href="#">Buy now</a>
4	<a href="#">9299004100</a> Ybs67-4 washer, spring	<a href="#">Buy now</a>
5	<a href="#">9538004600</a> Nut,hex	<a href="#">Buy now</a>
6	<a href="#">6Y58355XT1</a> Bracket, meter 1	<a href="#">Buy now</a>
7	<a href="#">6Y58350T91</a> Tachometer assembly	<a href="#">Buy now</a>

## Meter 2

### ANALOG TACHOMETER

Ref. No.	Description	Part No.	Applicable model
1	Without indicators BLK panel	6Y7-83540-20	Pre-mixed 9.9-225 FT8 (T8), F9.9-F25 (FT/T25)
	Without indicators WHT panel	6Y7-83540-30	
8	With 3 oil indicators BLK panel	6Y7-83540-00	250G, L250G
	With 3 oil indicators WHT panel	6Y7-83540-10	
17	With overheat & oil indicators BLK panel	6Y7-83540-80	Above 40 (3-cyl) w/ oil injection (except 250G/ L250G) Above F30 [Mechanical RC]
	With overheat & oil indicators WHT panel	6Y7-83540-90	



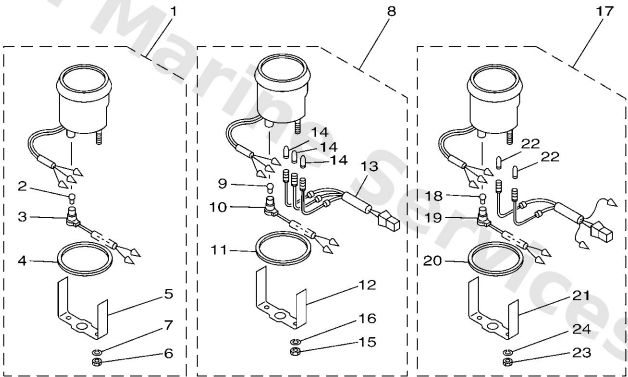
601M10M-L020

Ref	Part	
1	<a href="#">6Y78354020</a> Tachometer assembly UR WITHOUT OIL LAMP	<a href="#">Buy now</a>
1	<a href="#">6Y78354030</a> Tachometer assembly UR WITHOUT OIL LAMP	<a href="#">Buy now</a>
2	<a href="#">6Y58351700</a> Bulb (12v-1.7w)	<a href="#">Buy now</a>
3	<a href="#">6Y58353610</a> Socket, meter FOR 6Y7-83540-30	<a href="#">Buy now</a>
3	<a href="#">6Y58353640</a> Socket, meter FOR 6Y7-83540-20	<a href="#">Buy now</a>
4	<a href="#">6Y58352300</a> Damper	<a href="#">Buy now</a>
5	<a href="#">6Y58351400</a> Plate, fitting	<a href="#">Buy now</a>
6	<a href="#">9538005600</a> Nut, hexagon (663)	<a href="#">Buy now</a>
7	<a href="#">9299005100</a> Ybs67-5 washer, spring	<a href="#">Buy now</a>
8	<a href="#">6Y78354000</a> Tachometer assembly UR WITH OIL LAMP	<a href="#">Buy now</a>
8	<a href="#">6Y78354010</a> Tachometer assembly UR WITH OIL LAMP	<a href="#">Buy now</a>
13	<a href="#">6Y58350903</a> Socket cord assembly	<a href="#">Buy now</a>
14	<a href="#">6Y58351800</a> Bulb (12v-1.7w) t6.5	<a href="#">Buy now</a>
15	<a href="#">9530305600</a> Nut, hexagon (663)	<a href="#">Buy now</a>
16	<a href="#">9290305100</a> Ybs67-5 washer, spring	<a href="#">Buy now</a>

Meter 2

ANALOG TACHOMETER

Ref. No.	Description	Part No.	Applicable model
1	Without indicators BLK panel	6Y7-83540-20	Pre-mixed 9.9-225 FT8 (T8), F9.9 -F25 (FT/T25)
	Without indicators WHT panel	6Y7-83540-30	
8	With 3 oil indicators BLK panel	6Y7-83540-00	250G, L250G
	With 3 oil indicators WHT panel	6Y7-83540-10	
17	With overheat & oil indicators BLK panel	6Y7-83540-80	Above 40 (3-cyl) w/ oil injection (except 250G/ L250G) Above F30 [Mechanical RC]
	With overheat & oil indicators WHT panel	6Y7-83540-90	



601M10M-L020

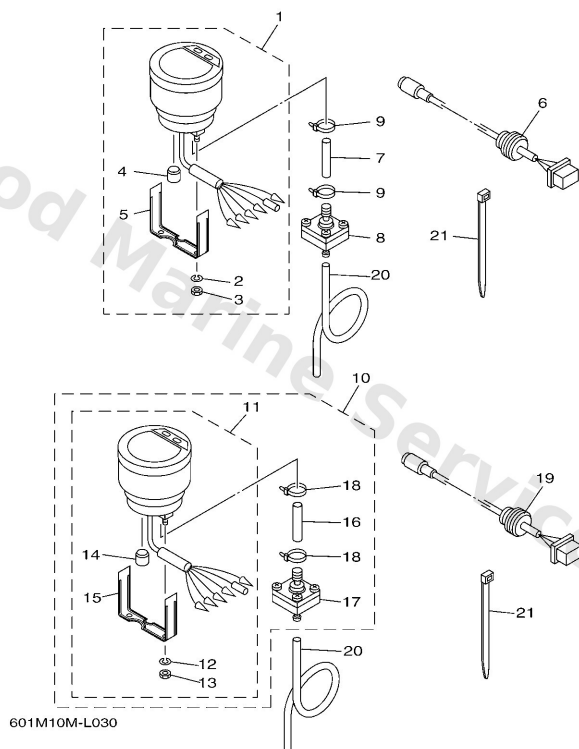
Ref	Part	
17	<a href="#">6Y78354080</a> Tachometer assembly UR WITH OIL/TEMP LAMP	<a href="#">Buy now</a>
17	<a href="#">6Y78354090</a> Tachometer assembly UR WITH OIL/TEMP LAMP	<a href="#">Buy now</a>



# Meter 3

## DIGITAL SPEEDOMETER

Ref. No.	Description	Part No.	Applicable model
1	Digital multifunction	6Y5-83570-S6	Above 40 (3-cyl)
10		6Y5-83500-30	Above F30 [Mechanical RC] For Yamaha manufactured boats (Japan)

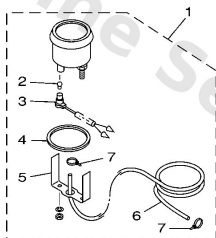


Ref	Part	
1	<a href="#">6Y583570S6</a> Speedometer assembly	<a href="#">Buy now</a>
2	<a href="#">9299004100</a> Ybs67-4 washer, spring	<a href="#">Buy now</a>
3	<a href="#">9538004600</a> Nut,hex	<a href="#">Buy now</a>
4	<a href="#">6Y583533T2</a> Grommet	<a href="#">Buy now</a>
5	<a href="#">6Y58355XT1</a> Bracket, meter 1	<a href="#">Buy now</a>
6	<a href="#">6Y587122S0</a> Cord assembly 1 AP	<a href="#">Buy now</a>
7	<a href="#">6Y58355731</a> Tube	<a href="#">Buy now</a>
8	<a href="#">6Y58372800</a> Connector assembly	<a href="#">Buy now</a>
9	<a href="#">9046511M10</a> Clamp	<a href="#">Buy now</a>
10	<a href="#">6Y58350030</a> Meter assembly	<a href="#">Buy now</a>
11	<a href="#">6Y58357030</a> Speedometer assembly	<a href="#">Buy now</a>
20	<a href="#">6Y58355700</a> Tube (8m)	<a href="#">Buy now</a>

# Meter 4

## ANALOG SPEEDOMETER

Description	Part No.	Applicable model
Analog, BLK panel 0 – 75 mph (20 – 120 km/h)	6Y7-83510-00	Above 40 (3-cyl) Above F30 [Mechanical RC]
Analog, WHT panel 0 – 75 mph (20 – 120 km/h)	6Y7-83510-10	
Analog, BLK panel 0 – 50 mph (20 – 80 km/h)	6Y7-83510-20	
Analog, WHT panel 0 – 50 mph (20 – 80 km/h)	6Y7-83510-30	
Analog, BLK panel 0 – 120 km/h (15 – 65 knot)	6Y7-83510-40	
Analog, WHT panel 0 – 120 km/h (15 – 65 knot)	6Y7-83510-50	
Analog, BLK panel 0 – 80 km/h (10 – 43 knot)	6Y7-83510-60	
Analog, WHT panel 0 – 80 km/h (10 – 43 knot)	6Y7-83510-70	



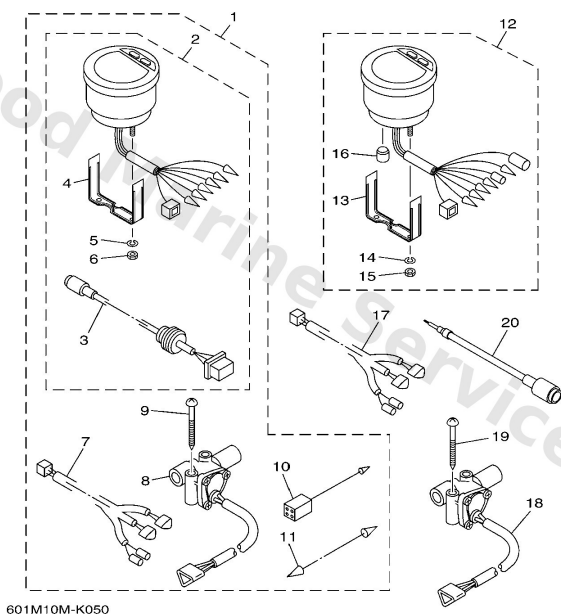
601M10M-K040

Ref	Part	
1	<a href="#">6Y78351000</a> Speedometer assembly (black) UR	<a href="#">Buy now</a>
1	<a href="#">6Y78351010</a> Speedometer assembly (white) UR	<a href="#">Buy now</a>
1	<a href="#">6Y78351020</a> Speedometer assembly (black) UR	<a href="#">Buy now</a>
1	<a href="#">6Y78351030</a> Speedometer assembly (50Mph) UR	<a href="#">Buy now</a>
1	<a href="#">6Y78351040</a> Speedometer assembly (120km/h) (bl) UR	<a href="#">Buy now</a>
1	<a href="#">6Y78351050</a> Speedometer assembly (120Km/H) UR	<a href="#">Buy now</a>
1	<a href="#">6Y78351060</a> Speedometer assembly (80km/h) (bla) UR	<a href="#">Buy now</a>
1	<a href="#">6Y78351070</a> Speedometer assembly (White) UR	<a href="#">Buy now</a>
2	<a href="#">6Y58351700</a> Bulb (12v-1.7w)	<a href="#">Buy now</a>
3	<a href="#">6Y58353640</a> Socket, meter	<a href="#">Buy now</a>
4	<a href="#">6Y58352300</a> Damper	<a href="#">Buy now</a>
5	<a href="#">6Y58351400</a> Plate, fitting	<a href="#">Buy now</a>
6	<a href="#">6888355700</a> Tube (8m)	<a href="#">Buy now</a>
7	<a href="#">9046511M10</a> Clamp	<a href="#">Buy now</a>

# Meter 5

## FUEL MANAGEMENT GAUGE

Ref. No.	Description	Part No.	Applicable model
1	Fuel mgt gauge kit 1 For single-engine	6Y5-W0088-54	Above 115
	Fuel mgt gauge kit 2 For twin-engine	6Y5-W0088-65	Above F115 (Mechanical RC)
12	Fuel mgt gauge with speedometer	6Y5-83500-40	



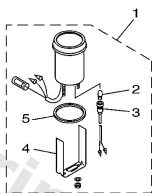
Ref	Part	
1	<a href="#">6Y5W008854</a> Digital fuel meter kit (single UR	<a href="#">Buy now</a>
1	<a href="#">6Y5W008865</a> Digital Fuel Meter Kit (Twin) UR	<a href="#">Buy now</a>
2	<a href="#">6Y583500F2</a> Fuel meter movement assembly	<a href="#">Buy now</a>
3	<a href="#">6Y587122S0</a> Cord assembly 1	<a href="#">Buy now</a>
4	<a href="#">6Y58355XT1</a> Bracket, meter 1	<a href="#">Buy now</a>
5	<a href="#">9299004100</a> Ybs67-4 washer, spring	<a href="#">Buy now</a>
6	<a href="#">9538004600</a> Nut,hex	<a href="#">Buy now</a>
17	<a href="#">6Y583553F1</a> Wire, lead FOR 6Y5-83500-40	<a href="#">Buy now</a>
8	<a href="#">6Y58575202</a> Sender unit assembly, fuel meter FOR 6Y5-W0088-54	<a href="#">Buy now</a>
9	<a href="#">9015806003</a> Screw, wood FOR 6Y5-W0088-54	<a href="#">Buy now</a>
10	<a href="#">6Y58211700</a> Wire, lead	<a href="#">Buy now</a>
11	<a href="#">7038253100</a> Wire, lead FOR 6Y5-W0088-65	<a href="#">Buy now</a>
12	<a href="#">6Y58350040</a> Meter assembly	<a href="#">Buy now</a>
16	<a href="#">6Y583533T2</a> Grommet	<a href="#">Buy now</a>
20	<a href="#">6Y585721F0</a> Wire, lead AP	<a href="#">Buy now</a>

# Meter 6

## ANALOG TRIM METER

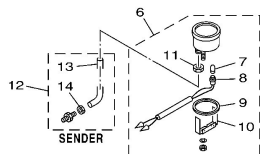
Description	Part No.	Applicable model
4-pin coupler BLK panel	6Y7-83670-00	Above premixed 40 (3-cyl) w/ PTT, 250G, L250G
Bullet connector BLK panel	6Y7-83670-40	Above 40 (3-cyl) w/ oil injection & PTT (except 250G & L250G), Above F30 w/ PTT (r1), T25 (r2) Using as a set with tachometer, 6Y7-83540-80
4-pin coupler WHT panel	6Y7-83670-20	Premixed 40 (3-cyl)-225 w/ PTT, 250G, L250G
Bullet connector WHT panel	6Y7-83670-50	Above 40 (3-cyl) w/ oil injection & PTT (except 250G & L250G), Above F30 w/ PTT (r1), T25 (r2) Using as a set with tachometer, 6Y7-83540-90

(\*1) Mechanical RC  
(\*2) T25 for US/CA



## COOLANT PRESSURE METER

Description	Part No.	Applicable model
kPa, Black panel	6Y7-83660-00	
kPa, White panel	6Y7-83660-20	Above 40 [3-cyl]
psi, Black panel	6Y7-83660-10	Above F25 (F1/T25) [Mechanical RC]
psi, White panel	6Y7-83660-30	



601M10M-K060

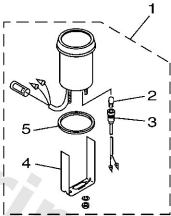
Ref	Part	
1	<a href="#">6Y78367000</a> Trim meter assembly. UR	<a href="#">Buy now</a>
1	<a href="#">6Y78367020</a> Trim meter assembly. UR	<a href="#">Buy now</a>
1	<a href="#">6Y78367040</a> Trim meter assembly. UR	<a href="#">Buy now</a>
1	<a href="#">6Y78367050</a> Trim Meter assembly. UR	<a href="#">Buy now</a>
2	<a href="#">6Y58351800</a> Bulb (12v-1.7w) t6.5	<a href="#">Buy now</a>
3	<a href="#">6Y58353600</a> Socket, meter	<a href="#">Buy now</a>
4	<a href="#">6Y58354400</a> Plate, fitting	<a href="#">Buy now</a>
5	<a href="#">6888366400</a> Damper	<a href="#">Buy now</a>
6	<a href="#">6Y78366000</a> Water pressure meter assembly UR	<a href="#">Buy now</a>
6	<a href="#">6Y78366010</a> Water Pressure Meter assembly UR	<a href="#">Buy now</a>
6	<a href="#">6Y78366020</a> Water Pressure Meter assembly UR	<a href="#">Buy now</a>
6	<a href="#">6Y78366030</a> Water Pressure Meter assembly UR	<a href="#">Buy now</a>
10	<a href="#">6888366500</a> Plate, fitting	<a href="#">Buy now</a>
11	<a href="#">6638366800</a> Nut, nipple	<a href="#">Buy now</a>
12	<a href="#">6888366700</a> Sender	<a href="#">Buy now</a>

# Meter 6

## ANALOG TRIM METER

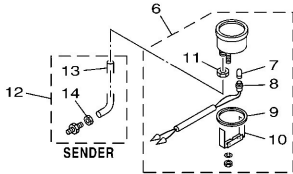
Description	Part No.	Applicable model
4-pin coupler BLK panel	6Y7-83670-00	Above premixed 40 (3-cyl) w/ PTT, 250G, L250G
Bullet connector BLK panel	6Y7-83670-40	Above 40 (3-cyl) w/ oil injection & PTT (except 250G & L250G), Above F30 w/ PTT (*1), T25 (*2) Using as a set with tachometer, 6Y7-83540-80
4-pin coupler WHT panel	6Y7-83670-20	Premixed 40 (3-cyl)-225 w/ PTT, 250G, L250G
Bullet connector WHT panel	6Y7-83670-50	Above 40 (3-cyl) w/ oil injection & PTT (except 250G & L250G), Above F30 w/ PTT (*1), T25 (*2) Using as a set with tachometer, 6Y7-83540-90

(\*1) Mechanical RC  
(\*2) T25 for US/CA



## COOLANT PRESSURE METER

Description	Part No.	Applicable model
kPa, Black panel	6Y7-83660-00	
kPa, White panel	6Y7-83660-20	Above 40 [3-cyl]
psi, Black panel	6Y7-83660-10	Above F25 (FT/T25) [Mechanical RC]
psi, White panel	6Y7-83660-30	



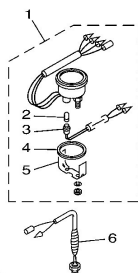
601M10M-K060

Ref	Part	
13	<a href="#">6888366600</a> Tube	<a href="#">Buy now</a>

# Meter 7

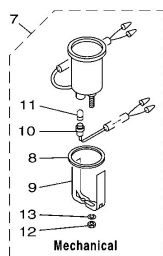
## COOLANT TEMP. METER

Description	Part No.	Applicable model
Black panel	6Y7-83590-00	Above 40 [3-cylinder]
White panel	6Y7-83590-10	Above F25 (FT/T25) [Mechanical RC]

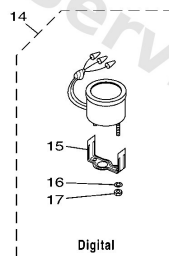


## HOUR METER

Ref. No.	Description	Part No.	Applicable model
7	Mechanical	6Y5-83504-01	All electrical start models
14	Digital, Black panel	6Y7-83504-00	
	Digital, White panel	6Y7-83504-10	



601M10M-K070

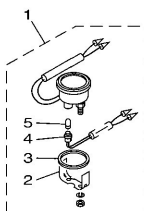


Ref	Part	
1	<a href="#">6Y78359000</a> Water temperature assembly UR	<a href="#">Buy now</a>
1	<a href="#">6Y78359010</a> Water temperature assembly UR	<a href="#">Buy now</a>
2	<a href="#">6Y58351800</a> Bulb (12v-1.7w) t6.5	<a href="#">Buy now</a>
3	<a href="#">6Y58353600</a> Socket, meter	<a href="#">Buy now</a>
4	<a href="#">6888366400</a> Damper	<a href="#">Buy now</a>
5	<a href="#">6Y58354400</a> Plate, fitting	<a href="#">Buy now</a>
6	<a href="#">6888359100</a> Thermo unit	<a href="#">Buy now</a>
7	<a href="#">6Y58350401</a> Hour meter assembly	<a href="#">Buy now</a>
9	<a href="#">6Y58357700</a> Plate, fitting	<a href="#">Buy now</a>
12	<a href="#">9530304600</a> Nut, hexagon (663)	<a href="#">Buy now</a>
13	<a href="#">9299004100</a> Ybs67-4 washer, spring	<a href="#">Buy now</a>
14	<a href="#">6Y78350400</a> Hour meter assembly UR	<a href="#">Buy now</a>
14	<a href="#">6Y78350410</a> Hour meter assembly UR	<a href="#">Buy now</a>
15	<a href="#">6Y58355XH0</a> Bracket, meter 1	<a href="#">Buy now</a>
17	<a href="#">9538004600</a> Nut,hex	<a href="#">Buy now</a>

# Meter 8

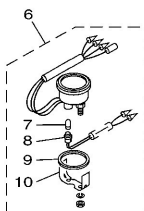
## VOLTAGE METER

Description	Part No.	Applicable model
DC 12 volts power supply Black panel	6Y7-83503-00	All electrical start models
DC 12 volts power supply White panel	6Y7-83503-10	



## FUEL METER

Description	Part No.	Applicable model
For Yamaha sensor (5 – 105 Ω) Black panel	6Y7-85750-00	All electrical start models
For ABYC sensor (30 – 240 Ω) Black panel	6Y7-85750-10	
For Yamaha sensor (5 – 105 Ω) White panel	6Y7-85750-20	
For ABYC sensor (30 – 240 Ω) White panel	6Y7-85750-30	

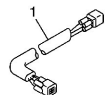


601M10M-J080

Ref	Part	
1	<a href="#">6Y78350300</a> Voltmeter assembly UR	<a href="#">Buy now</a>
1	<a href="#">6Y78350310</a> Voltmeter assembly UR	<a href="#">Buy now</a>
2	<a href="#">6Y58354400</a> Plate, fitting	<a href="#">Buy now</a>
3	<a href="#">6888366400</a> Damper	<a href="#">Buy now</a>
4	<a href="#">6Y58353600</a> Socket, meter	<a href="#">Buy now</a>
5	<a href="#">6Y58351800</a> Bulb (12v-1.7w) t6.5	<a href="#">Buy now</a>
6	<a href="#">6Y78575000</a> Fuel meter assembly UR	<a href="#">Buy now</a>
6	<a href="#">6Y78575010</a> Fuel meter assembly UR	<a href="#">Buy now</a>
6	<a href="#">6Y78575020</a> Fuel meter assembly UR	<a href="#">Buy now</a>
6	<a href="#">6Y78575030</a> Fuel meter assembly UR	<a href="#">Buy now</a>

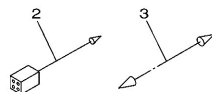
# Wire Harness 1

REMOTE-OIL TANK HARNESS

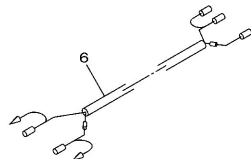
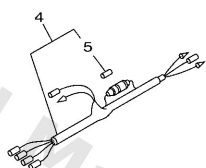


For V4, V6 oil injection model

ACCESSORY LEAD

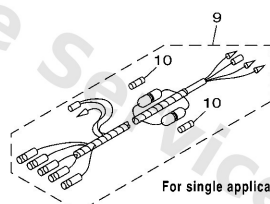
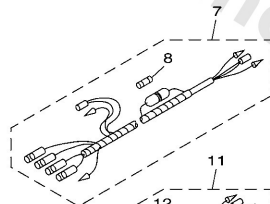


METER HARNESS (For analog meter)

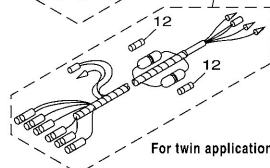


For pre-mixed model

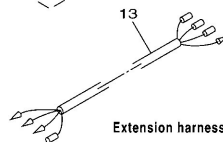
METER HARNESS (For digital meter)



For single application



For twin application



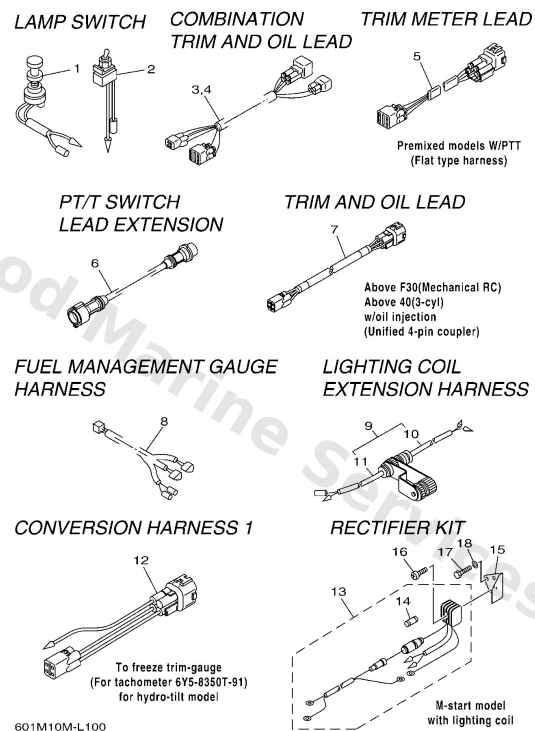
Extension harness

601M10M-J090

Ref	Part	
1	<a href="#">6R38572130</a> Wire, lead UR (4P)	<a href="#">Buy now</a>
1	<a href="#">6R38572150</a> Wire, lead UR (4P)	<a href="#">Buy now</a>
1	<a href="#">6R38572180</a> Wire, lead UR (4P)	<a href="#">Buy now</a>
2	<a href="#">6Y58211700</a> Wire, lead UR	<a href="#">Buy now</a>
2	<a href="#">6Y58214900</a> Wire, lead 3 UR	<a href="#">Buy now</a>
3	<a href="#">7038253100</a> Wire, lead L/H MODEL	<a href="#">Buy now</a>
4	<a href="#">6Y58355300</a> Wire, lead (l=2.5m)	<a href="#">Buy now</a>
5	<a href="#">1E68215100</a> Fuse (10a)	<a href="#">Buy now</a>
6	<a href="#">6Y58355310</a> Wire, lead	<a href="#">Buy now</a>
7	<a href="#">6Y58355320</a> Wire, lead (l=2.5m) L/H MODEL	<a href="#">Buy now</a>
9	<a href="#">6Y583553M0</a> Wire, lead (l=2.5m)	<a href="#">Buy now</a>
11	<a href="#">6Y583553N0</a> Wire, lead (l=2.5m)	<a href="#">Buy now</a>
13	<a href="#">6Y58356N00</a> Wire, lead	<a href="#">Buy now</a>

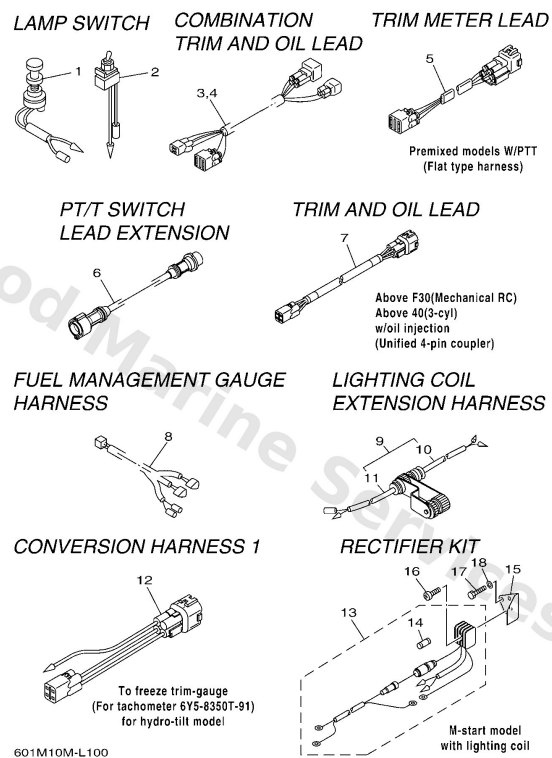


## Wire Harness 2



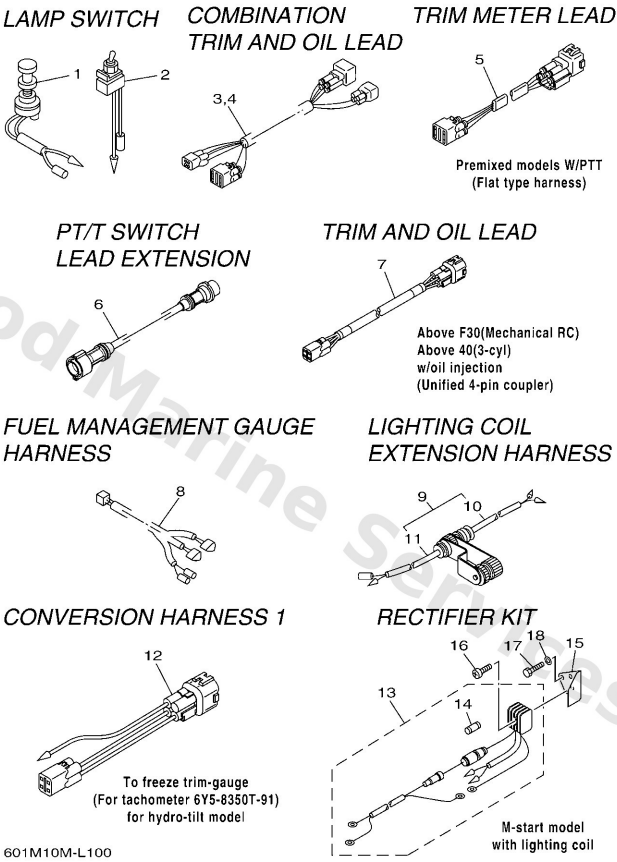
Ref	Part	
1	<a href="#">6888252000</a> Lamp switch assembly	<a href="#">Buy now</a>
2	<a href="#">6888252600</a> Switch, lamp	<a href="#">Buy now</a>
3	<a href="#">64D8255350</a> Extension, wire lea (5m) UR FOR (L)250G	<a href="#">Buy now</a>
3	<a href="#">64D8255370</a> Extension, wire lead (7m) UR FOR (L)250G	<a href="#">Buy now</a>
3	<a href="#">64D8255380</a> Extension, wire lead (8m) UR FOR (L)250G	<a href="#">Buy now</a>
3	<a href="#">64D8255390</a> Extension, wire lead (9m) UR FOR (L)250G	<a href="#">Buy now</a>
4	<a href="#">68F8255350</a> Extension, wire lea (5m) UR FOR (L)250G	<a href="#">Buy now</a>
4	<a href="#">68F8255370</a> Extension, wire lead (7m) UR FOR (L)250G	<a href="#">Buy now</a>
4	<a href="#">68F8255380</a> Extension, wire lead (8m) UR FOR (L)250G	<a href="#">Buy now</a>
4	<a href="#">68F8255390</a> Extension, wire lead (9m) UR FOR (L)250G	<a href="#">Buy now</a>
4	<a href="#">68F82553A0</a> Extension, Wire Lead (L=10.5M) UR FOR (L)250G	<a href="#">Buy now</a>
5	<a href="#">6R38255330</a> Wire, lead UR (4P)	<a href="#">Buy now</a>
5	<a href="#">6R38255350</a> Wire, lead UR (4P)	<a href="#">Buy now</a>
5	<a href="#">6R38255370</a> Extension, wire lead (for trim UR (4P)	<a href="#">Buy now</a>
5	<a href="#">6R38255380</a> Wire, lead UR (4P)	<a href="#">Buy now</a>

## Wire Harness 2



Ref	Part	
5	<a href="#">6R38255390</a> Extension, wire lead (for trim UR (4P)	<a href="#">Buy now</a>
6	<a href="#">6888258611</a> Extension, wire harness L)2M(7P)	<a href="#">Buy now</a>
7	<a href="#">6Y58365300</a> Wire, lead UR 4P,5M	<a href="#">Buy now</a>
7	<a href="#">6Y58365310</a> Wire, lead UR 4P,6M	<a href="#">Buy now</a>
7	<a href="#">6Y58365320</a> Wire, lead UR 4P,7M	<a href="#">Buy now</a>
7	<a href="#">6Y58365330</a> Wire, lead UR 4P,8M	<a href="#">Buy now</a>
7	<a href="#">6Y58365340</a> Wire, lead UR 4P,9M	<a href="#">Buy now</a>
7	<a href="#">6Y58365350</a> Trim oil harness UR 4P,10.5M	<a href="#">Buy now</a>
8	<a href="#">6Y583553F1</a> Wire, lead	<a href="#">Buy now</a>
9	<a href="#">6828438000</a> 2p concent assembly	<a href="#">Buy now</a>
10	<a href="#">6828438100</a> 2p concent 1	<a href="#">Buy now</a>
11	<a href="#">6828438200</a> 2p concent 2	<a href="#">Buy now</a>
12	<a href="#">6Y58350U10</a> Wire, Lead	<a href="#">Buy now</a>
13	<a href="#">6768197001</a> Rectifier assembly	<a href="#">Buy now</a>
14	<a href="#">6638215100</a> Fuse	<a href="#">Buy now</a>

# Wire Harness 2



Ref	Part	
15	<a href="#">6778197500</a> Plate, Rectifier Fitting	<a href="#">Buy now</a>
16	<a href="#">9788005025</a> Screw, panhead (a93)	<a href="#">Buy now</a>
17	<a href="#">9701306010</a> Bolt(63v)	<a href="#">Buy now</a>
18	<a href="#">9290306600</a> Washer, plain (646)	<a href="#">Buy now</a>

# Disclaimer

This document is provided for convenience only. It is **not** an official Yamaha publication and is **not supplied, endorsed, or approved** by Yamaha Motor Co., Ltd.

Reasonable efforts are made to keep information accurate; however diagrams, part references, supersessions, descriptions, and applicability may contain errors or omissions. Specifications and part availability may change without notice.

You are responsible for confirming the correct parts for your engine (including model code, year, serial range, and any superseded part numbers) before ordering or fitting.