



# Yamaha RIGGING - METER 2019

## Parts Manual

[www.floodmarine.co.uk](http://www.floodmarine.co.uk)

+44 2882 246 539

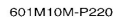
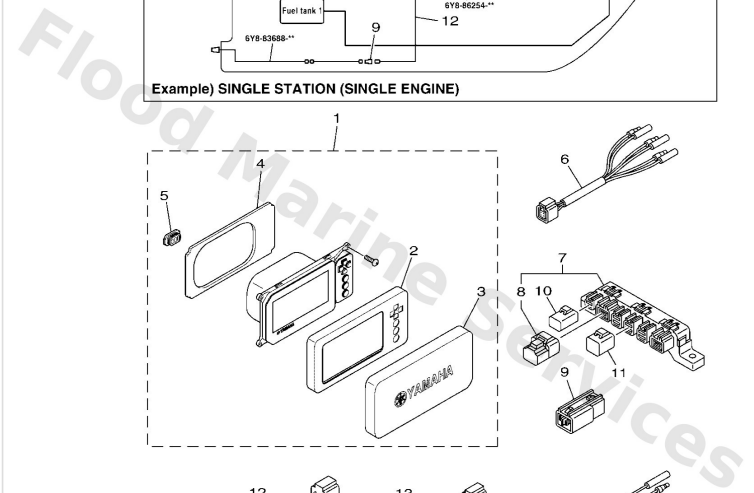
Authorised Yamaha Dealers



# Contents

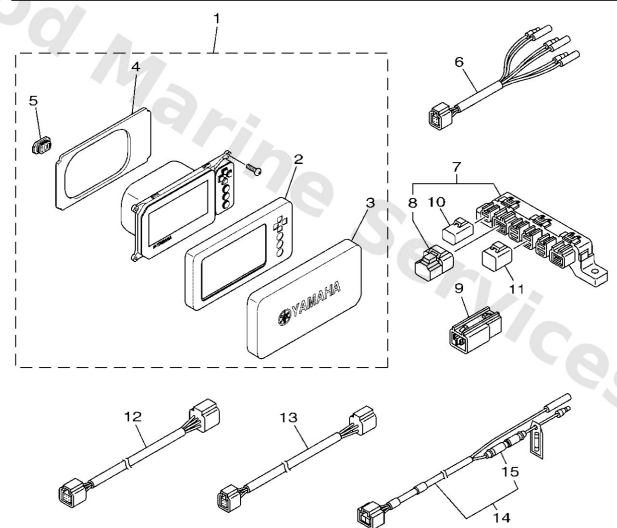
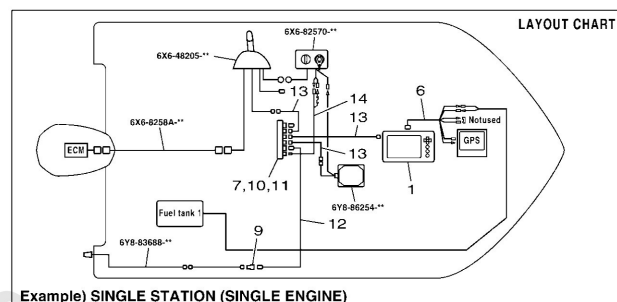
<b>6YC MULTIFUNCTION METER</b> .....	3
<b>CL7 DISPLAY 1</b> .....	5
<b>CL7 DISPLAY 2</b> .....	6
<b>DIGITAL NETWORK GAUGE 1</b> .....	8
<b>DIGITAL NETWORK GAUGE 2</b> .....	9
<b>DIGITAL NETWORK GAUGE 3</b> .....	11
<b>DIGITAL NETWORK GAUGE 4</b> .....	12
<b>DIGITAL NETWORK GAUGE 5</b> .....	13
<b>DIGITAL NETWORK GAUGE 6</b> .....	14
<b>DIGITAL NETWORK GAUGE 7</b> .....	16
<b>ELECTRICAL</b> .....	17
<b>HELM UNIT</b> .....	18
<b>METER 1</b> .....	19
<b>METER 2</b> .....	20
<b>METER 3</b> .....	21
<b>METER 4</b> .....	22
<b>METER 5</b> .....	23
<b>METER 6</b> .....	24
<b>METER 7</b> .....	26
<b>METER 8</b> .....	27
<b>WIRE HARNESS 1</b> .....	28
<b>WIRE HARNESS 2</b> .....	29

## 6Yc Multifunction Meter



Ref	Part	
1	<a href="#">6YC8371003</a> Multi display assembly	<a href="#">Buy now</a>
2	<a href="#">6YC8351200</a> Ring, speed meter	<a href="#">Buy now</a>
3	<a href="#">6YC8727800</a> Cover, meter	<a href="#">Buy now</a>
4	<a href="#">6YC1222300</a> Seal	<a href="#">Buy now</a>
5	<a href="#">6YC8253200</a> Cap	<a href="#">Buy now</a>
6	<a href="#">6Y88356N01</a> Lead, fuel tank & gps sender	<a href="#">Buy now</a>
7	<a href="#">6Y88192001</a> Multi-hub	<a href="#">Buy now</a>
8	<a href="#">6Y88537101</a> End of line resister	<a href="#">Buy now</a>
9	<a href="#">6Y88192011</a> Single-hub	<a href="#">Buy now</a>
10	<a href="#">6Y88258201</a> Red cap 1 (2pin)	<a href="#">Buy now</a>
11	<a href="#">6Y88258211</a> White cap 1 (4pin)	<a href="#">Buy now</a>
12	<a href="#">6Y88255301</a> Main bus wire 0.3m-1ft UR	<a href="#">Buy now</a>
12	<a href="#">6Y88255311</a> Main bus wire 4.6m (15ft) UR	<a href="#">Buy now</a>
12	<a href="#">6Y88255321</a> Main bus wire 6.1m (20ft) UR	<a href="#">Buy now</a>
12	<a href="#">6Y88255331</a> Main bus wire 7.6m (25ft) UR	<a href="#">Buy now</a>

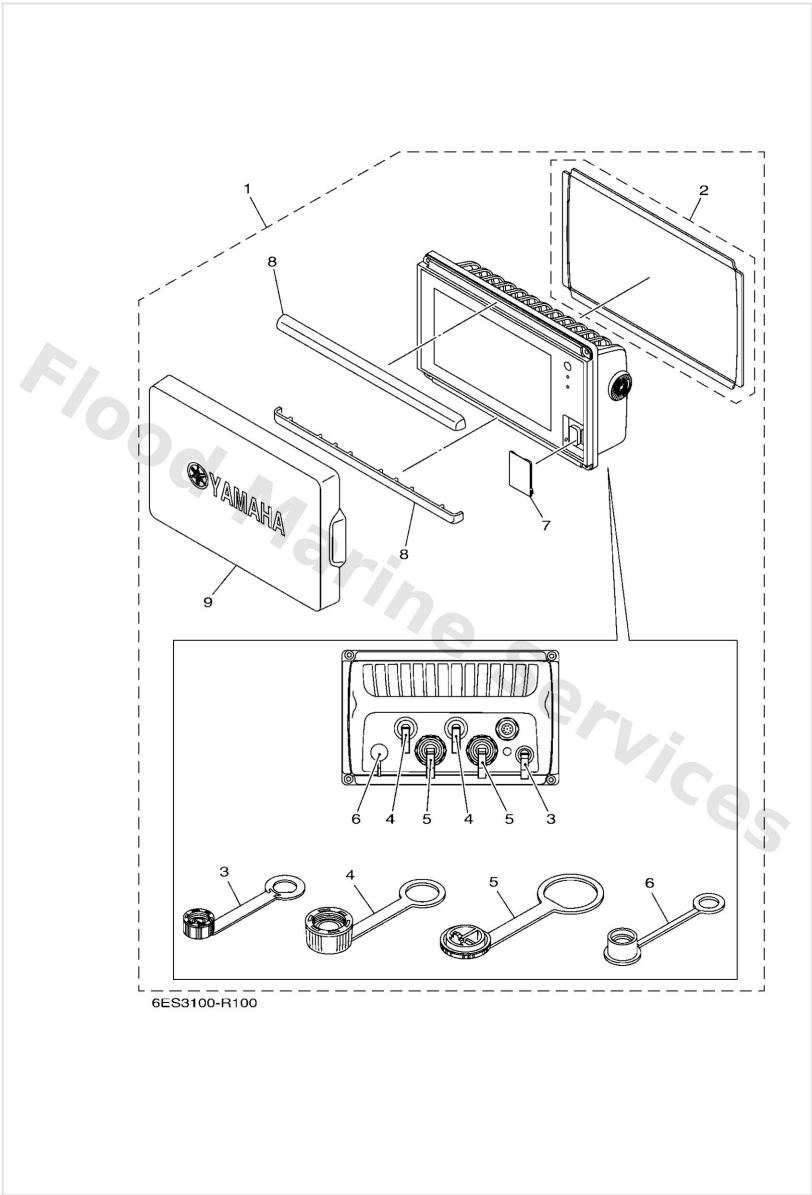
# 6Yc Multifunction Meter



601M10M-P220

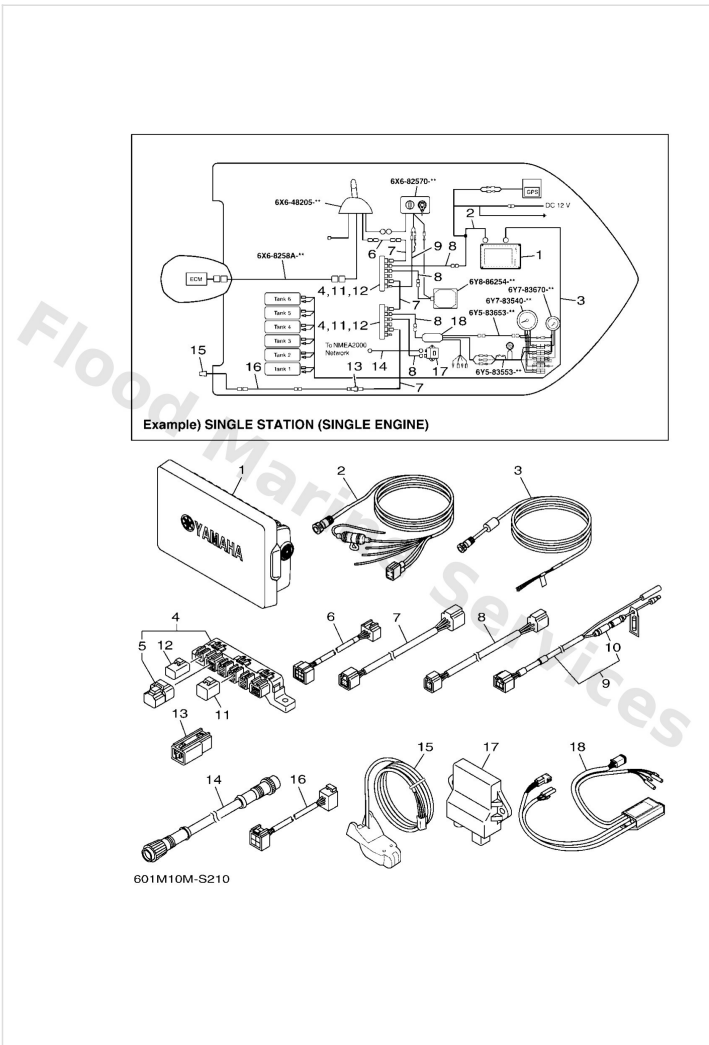
Ref	Part	
12	<a href="#">6Y88255341</a> Main bus wire 9.1m (30ft) UR	<a href="#">Buy now</a>
12	<a href="#">6Y88255350</a> Main bus wire 3.0m-10ft UR	<a href="#">Buy now</a>
13	<a href="#">6Y88252101</a> 1ft pigtail bus UR	<a href="#">Buy now</a>
13	<a href="#">6Y88252111</a> Pigtail bus wire 0.6m-2ft UR	<a href="#">Buy now</a>
13	<a href="#">6Y88252121</a> Pigtail bus wire 0.9m-3ft UR	<a href="#">Buy now</a>
13	<a href="#">6Y88252131</a> Pigtail bus wire 1.8m-6ft UR	<a href="#">Buy now</a>
13	<a href="#">6Y88252141</a> 9ft pigtail bus UR	<a href="#">Buy now</a>
13	<a href="#">6Y88252151</a> Pigtail bus wire 3.6m-12ft UR	<a href="#">Buy now</a>
14	<a href="#">6Y88355301</a> 8ft power wire	<a href="#">Buy now</a>
15	<a href="#">6G18215100</a> Fuse (10a)	<a href="#">Buy now</a>

CI7 Display 1



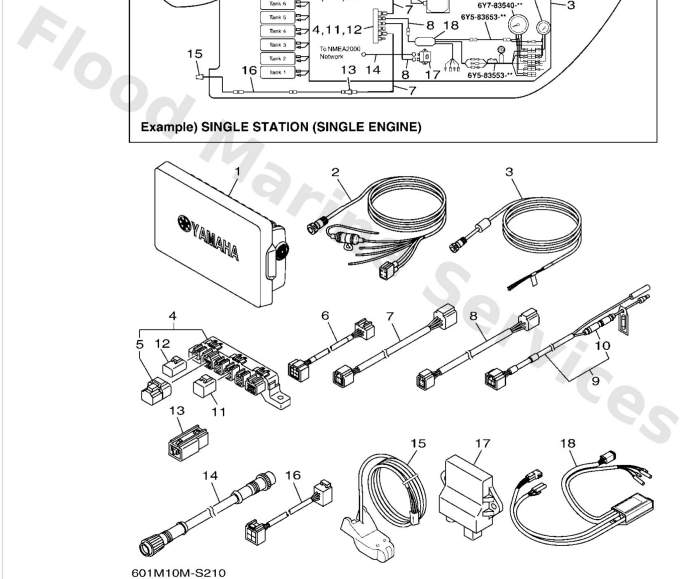
Ref	Part	
1	<a href="#">6YD8371002</a> Multi Display assembly UR	<a href="#">Buy now</a>
1	<a href="#">6YD8371012</a> Multi display assembly UR	<a href="#">Buy now</a>
1	<a href="#">6YD8371022</a> CI7 display (w/o wifi) UR	<a href="#">Buy now</a>
2	<a href="#">6YD2248000</a> Seal assembly	<a href="#">Buy now</a>
3	<a href="#">6YD8395600</a> Cap 1	<a href="#">Buy now</a>
4	<a href="#">6YD8395700</a> Cap 2	<a href="#">Buy now</a>
5	<a href="#">6YD8395800</a> Cap 3	<a href="#">Buy now</a>
6	<a href="#">6YD8253200</a> Cap	<a href="#">Buy now</a>
7	<a href="#">6YD6572200</a> Door	<a href="#">Buy now</a>
8	<a href="#">6YD8351200</a> Ring, speed meter	<a href="#">Buy now</a>
9	<a href="#">6YD8727800</a> Cover, meter	<a href="#">Buy now</a>

## CI7 Display 2



Yamaha RIGGING - METER 2019 Parts Manual  
Page 6 of 31

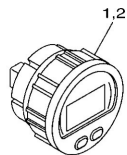
## CI7 Display 2



Ref	Part	
8	<a href="#">6Y88252111</a> Pigtail bus wire 0.6m-2ft UR	<a href="#">Buy now</a>
8	<a href="#">6Y88252121</a> Pigtail bus wire 0.9m-3ft UR	<a href="#">Buy now</a>
8	<a href="#">6Y88252131</a> Pigtail bus wire 1.8m-6ft UR	<a href="#">Buy now</a>
8	<a href="#">6Y88252141</a> 9ft pigtail bus UR	<a href="#">Buy now</a>
8	<a href="#">6Y88252151</a> Pigtail bus wire 3.6m-12ft UR	<a href="#">Buy now</a>
9	<a href="#">6Y88355301</a> 8ft power wire	<a href="#">Buy now</a>
10	<a href="#">6G18215100</a> Fuse (10a)	<a href="#">Buy now</a>
11	<a href="#">6Y88258211</a> White cap 1 (4pin) UN	<a href="#">Buy now</a>
12	<a href="#">6Y88258201</a> Red cap 1 (2pin) UN	<a href="#">Buy now</a>
13	<a href="#">6Y88192011</a> Single-hub	<a href="#">Buy now</a>
14	<a href="#">6YG8252100</a> Wire, lead	<a href="#">Buy now</a>
15	<a href="#">6Y98368800</a> Sensor assembly	<a href="#">Buy now</a>
16	<a href="#">6Y98355360</a> Wire, lead FOR SENSOR ASSY	<a href="#">Buy now</a>
17	<a href="#">6YG8A2D000</a> Gateway	<a href="#">Buy now</a>
18	<a href="#">6Y98A2D030</a> Analog gauge interface ANALOGUE GAUGE	<a href="#">Buy now</a>

# Digital Network Gauge 1

## MULTIFUNCTION METER

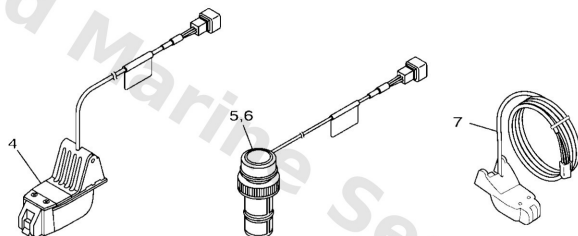


6Y8-83500-20  
Requires optional speed sensor,  
or NMEA compatible GPS



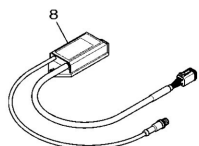
For 6Y8 meters

## MULTI-SENSOR



Discontinued, available for stock only.  
After sold out, 6Y9-83688-00 will be supplied.

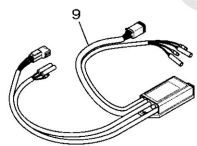
## NMEA2000 GATEWAY



Compatible with 6Y8 and 6Y9 protocols

601M10M-S120

## ANALOG GAUGE INTERFACE



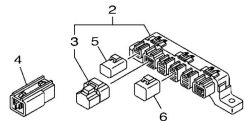
Compatible with 6Y8 and 6Y9 protocols,  
Required for each engine.

Ref	Part	
1	<a href="#">6Y88350T20</a> Tachometer, rd	<a href="#">Buy now</a>
2	<a href="#">6Y88350020</a> S & fm meter, rd <b>SPEED &amp; FUEL</b>	<a href="#">Buy now</a>
3	<a href="#">6Y88351400</a> Plate, fitting <b>UN</b>	<a href="#">Buy now</a>
4	<a href="#">6Y88368801</a> Transom Mount Triducer	<a href="#">Buy now</a>
5	<a href="#">6Y88368811</a> Plastic Thru-Hull Triducer <b>PLASTIC BODY</b>	<a href="#">Buy now</a>
6	<a href="#">6Y88368820</a> Bronze Thru-Hull Triducer <b>BRONZE BODY</b>	<a href="#">Buy now</a>
7	<a href="#">6Y98368800</a> Sensor assembly	<a href="#">Buy now</a>
8	<a href="#">6Y98A2D040</a> Interface Unit <b>GATEWAY</b>	<a href="#">Buy now</a>
9	<a href="#">6Y98A2D030</a> Analog gauge interface <b>ANALOGUE GAUGE</b>	<a href="#">Buy now</a>



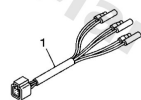
# Digital Network Gauge 2

## NETWORK HUB



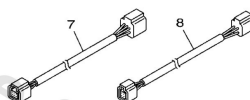
Ref. No.	Description	Part No.	Remarks
2	Multi-hub	6Y8-81920-01	w/ ending resistor cap (P/N: 6Y8-85371-01)
4	Single hub (inline hub)	6Y8-81920-11	Included ending resistor
5	2P sealing cap, RED	6Y8-82582-01	
6	4P sealing cap, WHI	6Y8-82582-11	Same as bus wire cap of engine wire harness

## FUEL TANK / GPS WIRE

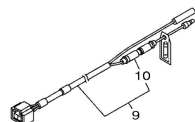


Twin fuel tanks acceptable

## WIRE HARNESSA



## WIRE HARNESSA



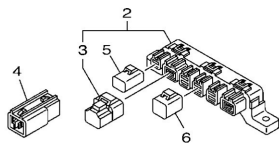
With 10 amp fuse

601M10M-T130

Ref	Part	
1	<a href="#">6Y88356N01</a> Lead, fuel tank & gps sender	<a href="#">Buy now</a>
2	<a href="#">6Y88192001</a> Multi-hub UN	<a href="#">Buy now</a>
3	<a href="#">6Y88537101</a> End of line resister	<a href="#">Buy now</a>
4	<a href="#">6Y88192011</a> Single-hub	<a href="#">Buy now</a>
5	<a href="#">6Y88258201</a> Red cap 1 (2pin) UN	<a href="#">Buy now</a>
6	<a href="#">6Y88258211</a> White cap 1 (4pin) UN	<a href="#">Buy now</a>
7	<a href="#">6Y88255301</a> Main bus wire 0.3m-1ft UR	<a href="#">Buy now</a>
7	<a href="#">6Y88255311</a> Main bus wire 4.6m (15ft) UR	<a href="#">Buy now</a>
7	<a href="#">6Y88255321</a> Main bus wire 6.1m (20ft) UR	<a href="#">Buy now</a>
7	<a href="#">6Y88255331</a> Main bus wire 7.6m (25ft) UR	<a href="#">Buy now</a>
7	<a href="#">6Y88255341</a> Main bus wire 9.1m (30ft) UR	<a href="#">Buy now</a>
7	<a href="#">6Y88255350</a> Main bus wire 3.0m-10ft UR	<a href="#">Buy now</a>
8	<a href="#">6Y88252101</a> 1ft pigtail bus UR	<a href="#">Buy now</a>
8	<a href="#">6Y88252111</a> Pigtail bus wire 0.6m-2ft UR	<a href="#">Buy now</a>
8	<a href="#">6Y88252121</a> Pigtail bus wire 0.9m-3ft UR	<a href="#">Buy now</a>

# Digital Network Gauge 2

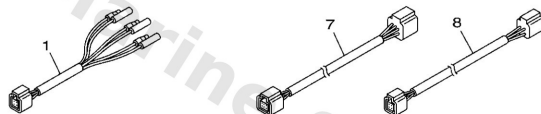
## NETWORK HUB



Ref. No.	Description	Part No.	Remarks
2	Multi-hub	6Y8-81920-01	w/ ending resistor cap (P/N: 6Y8-85371-01)
4	Single hub (inline hub)	6Y8-81920-11	Included ending resistor
5	2P sealing cap, RED	6Y8-82582-01	
6	4P sealing cap, WHT	6Y8-82582-11	Same as bus wire cap of engine wire harness

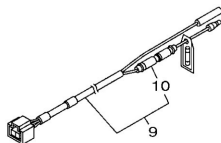
## FUEL TANK / GPS WIRE

## WIRE HARNESSA



Twin fuel tanks acceptable

## WIRE HARNESSA



With 10 amp fuse

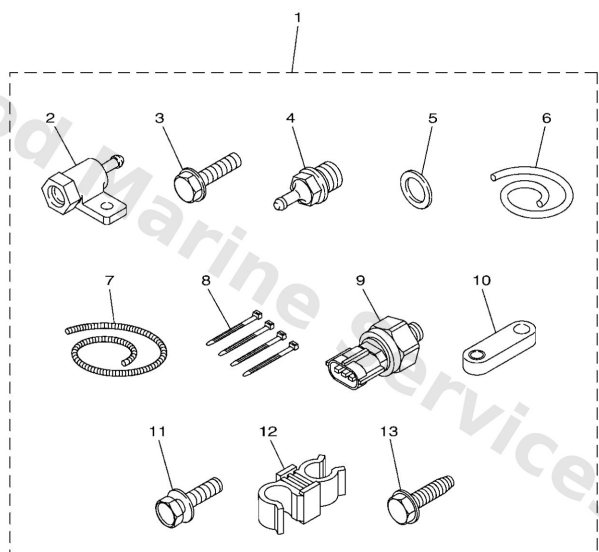
601M10M-T130

Ref	Part	
8	<a href="#">6Y88252131</a> Pigtail bus wire 1.8m-6ft UR	<a href="#">Buy now</a>
8	<a href="#">6Y88252141</a> 9ft pigtail bus UR	<a href="#">Buy now</a>
8	<a href="#">6Y88252151</a> Pigtail bus wire 3.6m-12ft UR	<a href="#">Buy now</a>
9	<a href="#">6Y88355301</a> 8ft power wire	<a href="#">Buy now</a>
10	<a href="#">6G18215100</a> Fuse (10a)	<a href="#">Buy now</a>

## Digital Network Gauge 3

### COOLANT PRESSURE SENSOR

Part No.	Remarks
60V-8A4L0-1A	Fuel injected F30-F115 (68V)



601M10M-T140

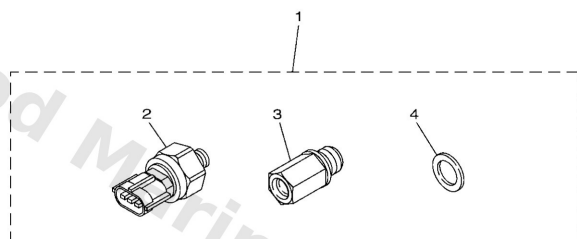
Ref	Part	
1	<a href="#">60V8A4L01A</a> Sensor, module	<a href="#">Buy now</a>
2	<a href="#">60V8366D00</a> Adaptor, input	<a href="#">Buy now</a>
3	<a href="#">95D9506025</a> Bolt, flange deep recess	<a href="#">Buy now</a>
4	<a href="#">60V8366700</a> Sender, water pressure	<a href="#">Buy now</a>
5	<a href="#">9043014115</a> Gasket (663)	<a href="#">Buy now</a>
6	<a href="#">9044507018</a> Hose (l1457)	<a href="#">Buy now</a>
7	<a href="#">9044707015</a> Hose, cover (l: 1300mm)	<a href="#">Buy now</a>
8	<a href="#">9046511M10</a> Clamp	<a href="#">Buy now</a>
9	<a href="#">6AW8366B01</a> Sensor, water pressure	<a href="#">Buy now</a>
10	<a href="#">60V8257V00</a> Plate, connector	<a href="#">Buy now</a>
11	<a href="#">97E9506516</a> Bolt, hexagon w/w deep recess	<a href="#">Buy now</a>
12	<a href="#">9046409021</a> Clamp	<a href="#">Buy now</a>
13	<a href="#">9010906M81</a> Bolt	<a href="#">Buy now</a>

# Digital Network Gauge 4

## COOLANT PRESSURE SENSOR

Part No.	Remarks
69J-8A4L0-24	F200-F225 (V6-3.3L)
63P-8A4L0-06	F150-F200 (L4-2.8L), F200-F250 (V6-3.3L, VCT), F225-F300 (V6-4.2L, DEC) CL7 DISPLAY (6YD)

\* For F350, factory-installed as standard.



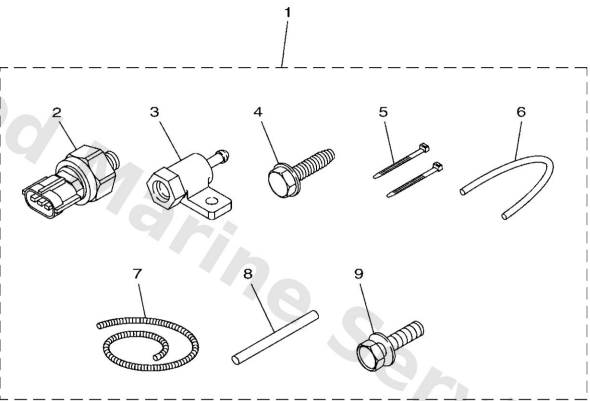
601M10M-T150

Ref	Part	
1	<a href="#">63P8A4L006</a> Sensor, module UR	<a href="#">Buy now</a>
1	<a href="#">69J8A4L024</a> Sensor, Module UR	<a href="#">Buy now</a>
2	<a href="#">6AW8366B01</a> Sensor, water pressure	<a href="#">Buy now</a>
3	<a href="#">63P8366C00</a> Adaptor, input FOR 63P-8A4L0-06	<a href="#">Buy now</a>
3	<a href="#">69J8366C00</a> Adaptor, input FOR 69J-8A4L0-24	<a href="#">Buy now</a>
4	<a href="#">9043014115</a> Gasket (663)	<a href="#">Buy now</a>

# Digital Network Gauge 5

## SPEED SENSOR

Part No.	Remarks
60V-BA4L1-1A	Fuel injected F30-F300 (V6) CL7 DISPLAY (6YD)



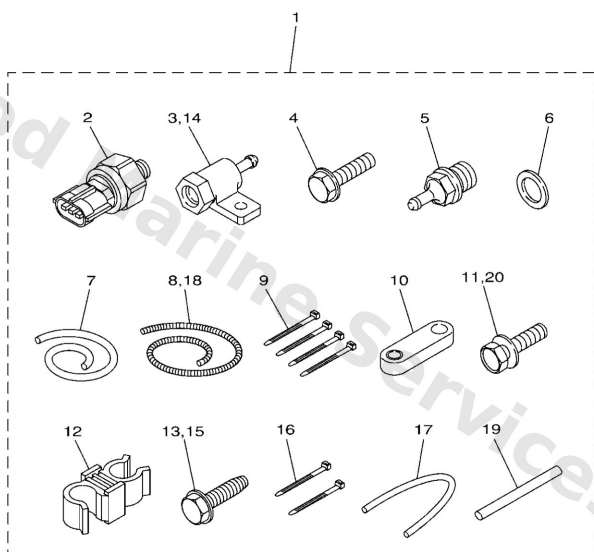
601M10M-T160

Ref	Part	
1	<a href="#">60V8A4L11A</a> Sensor, module 1	<a href="#">Buy now</a>
2	<a href="#">6AW8366B01</a> Sensor, water pressure	<a href="#">Buy now</a>
3	<a href="#">60V8366D00</a> Adaptor, input	<a href="#">Buy now</a>
4	<a href="#">9010906M81</a> Bolt	<a href="#">Buy now</a>
5	<a href="#">9046511M10</a> Clamp	<a href="#">Buy now</a>
6	<a href="#">9044507017</a> Hose (I550)	<a href="#">Buy now</a>
7	<a href="#">9044707013</a> Hose, cover (l: 700mm)	<a href="#">Buy now</a>
8	<a href="#">60V4262900</a> Seal	<a href="#">Buy now</a>
9	<a href="#">97E9506516</a> Bolt, hexagon w/w deep recess	<a href="#">Buy now</a>

# Digital Network Gauge 6

## SPEED/COOLANT PRESSURE SENSOR

Part No.	Remarks
60V-8A4L2-04	F115 (L4-1.7L), F115-F130 (L4-1.8L)



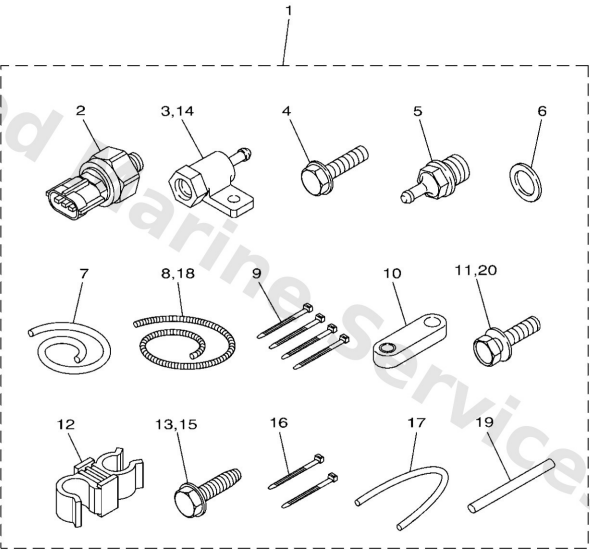
601M10M-S170

Ref	Part	
1	<a href="#">60V8A4L204</a> Sensor, Module 2	<a href="#">Buy now</a>
2	<a href="#">6AW8366B01</a> Sensor, water pressure	<a href="#">Buy now</a>
3	<a href="#">60V8366D00</a> Adaptor, input	<a href="#">Buy now</a>
4	<a href="#">95D9506025</a> Bolt, flange deep recess	<a href="#">Buy now</a>
5	<a href="#">60V8366700</a> Sender, water pressure	<a href="#">Buy now</a>
6	<a href="#">9043014115</a> Gasket (663)	<a href="#">Buy now</a>
7	<a href="#">9044507018</a> Hose (I1457)	<a href="#">Buy now</a>
8	<a href="#">9044707015</a> Hose, cover (l: 1300mm)	<a href="#">Buy now</a>
9	<a href="#">9046511M10</a> Clamp	<a href="#">Buy now</a>
10	<a href="#">60V8257V00</a> Plate, connector	<a href="#">Buy now</a>
11	<a href="#">97E9506516</a> Bolt, hexagon w/w deep recess	<a href="#">Buy now</a>
12	<a href="#">9046409021</a> Clamp	<a href="#">Buy now</a>
13	<a href="#">9010906M81</a> Bolt	<a href="#">Buy now</a>
17	<a href="#">9044507017</a> Hose (I550)	<a href="#">Buy now</a>
18	<a href="#">9044707013</a> Hose, cover (l: 700mm)	<a href="#">Buy now</a>

# Digital Network Gauge 6

## SPEED/COOLANT PRESSURE SENSOR

Part No.	Remarks
60V-8A4L2-04	F115 (L4-1.7L), F115-F130 (L4-1.8L)



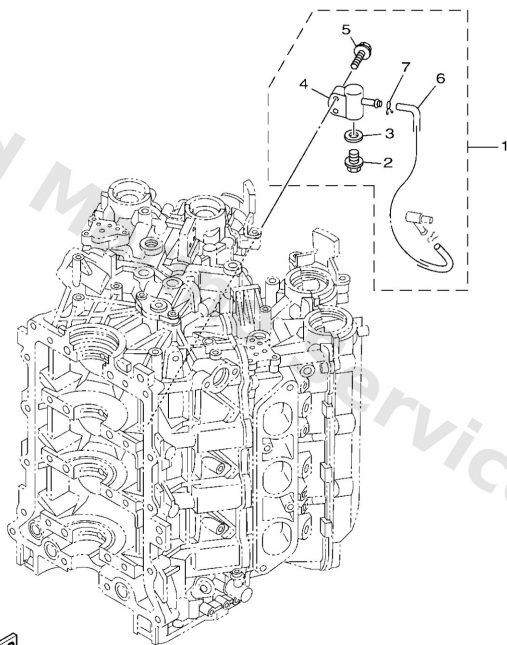
601M10M-S170

Ref	Part	
19	<a href="#">60V4262900</a> Seal	<a href="#">Buy now</a>

# Digital Network Gauge 7

## COOLANT PRESSURE SENSOR CONNECTOR

Part No.	Remarks
6P2-83728-01	As a set with COOLANT PRESSURE SENSOR KIT for F200-F250 (V6-3.3L)



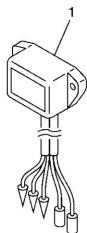
  
601M10M-T180

Ref	Part	
1	<a href="#">6P28372801</a> Connector assembly NOT FOR SALE	<a href="#">Buy now</a>
2	<a href="#">9034014M06</a> Plug, straight screw(62y)	<a href="#">Buy now</a>
3	<a href="#">9043014115</a> Gasket (663)	<a href="#">Buy now</a>
4	<a href="#">6P28365200</a> Connector	<a href="#">Buy now</a>
5	<a href="#">97E9506530</a> Bolt, hexagon w/w deep recess	<a href="#">Buy now</a>
6	<a href="#">6H42431100</a> Pipe 1	<a href="#">Buy now</a>
7	<a href="#">9046708M18</a> Clip	<a href="#">Buy now</a>

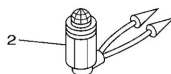


# Electrical

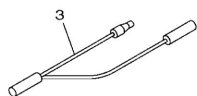
## CHARGE WARNING UNIT



All electrical start models  
with a rectifier/ regulator

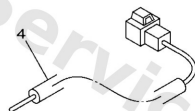


## IMMOBILIZER POWER DISTRIBUTION WIRE



For fuel injection four stroke  
multi-application w/ immobilizer

## BATTERY WIRING

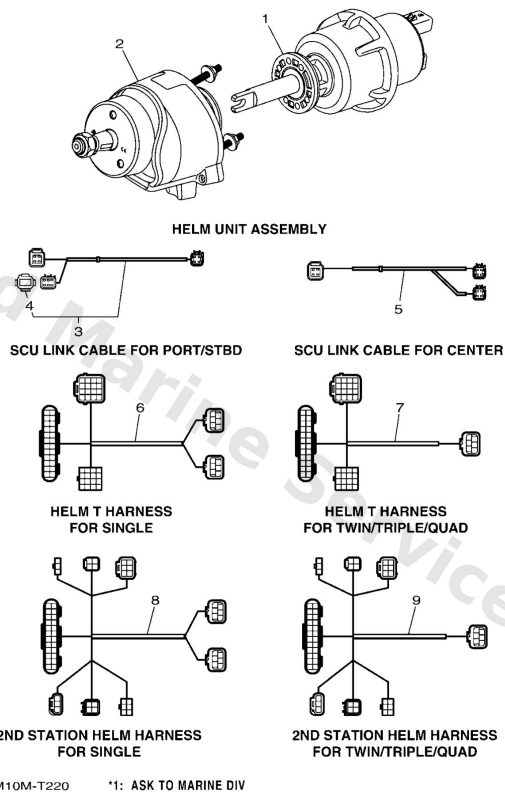


Part No.	Length	Conductor cross-sectional area		Remarks
		AWG	mm <sup>2</sup>	
68F-81949-02	2.7 m 9 ft	10	5	4-stroke 150 and larger *Except below offshore engines
69J-81949-02	3.8 m 13 ft	10	5	
6CE-81949-00	3.8 m 13 ft	5	15	4-stroke off-shore 225 to 300 (V6-4.2L)

601M10M-Q110

Ref	Part	
1	<a href="#">6978190160</a> -	<a href="#">Buy now</a>
2	<a href="#">6638430101</a> Pilot lamp ass'y 12V	<a href="#">Buy now</a>
3	<a href="#">6H58131500</a> Wire, lead	<a href="#">Buy now</a>
4	<a href="#">68F8194902</a> Wire, lead UR	<a href="#">Buy now</a>
4	<a href="#">69J8194902</a> Wire, lead (isolator, 3.8m ) UR	<a href="#">Buy now</a>
4	<a href="#">6CE8194900</a> Wire, lead (isolator cable) UR	<a href="#">Buy now</a>

# Helm Unit

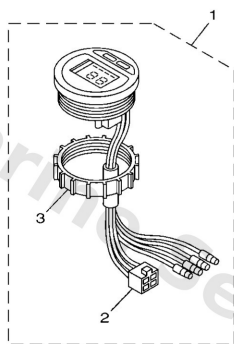


Ref	Part	
1	<a href="#">6GR615A000</a> Helm unit assembly tilt (2) <b>*1</b>	<a href="#">Buy now</a>
2	<a href="#">6GR6154A00</a> Tilt Helm Unit (1) <b>*1</b>	<a href="#">Buy now</a>
3	<a href="#">6GR8111500</a> Scu link harness p/s 5ft <b>UR *1 PORT/STBD</b>	<a href="#">Buy now</a>
3	<a href="#">6GR8111510</a> Scu link harness p/s 10ft <b>UR *1 PORT/STBD</b>	<a href="#">Buy now</a>
4	<a href="#">6Y88537101</a> End of line resister	<a href="#">Buy now</a>
5	<a href="#">6GR8111520</a> Scu link harness center 5ft <b>UR *1 CENTER</b>	<a href="#">Buy now</a>
5	<a href="#">6GR8111530</a> Scu link harness center 10ft <b>UR *1 CENTER</b>	<a href="#">Buy now</a>
6	<a href="#">6GR8258A00</a> Helm harness (main/single 0.9m) <b>UR *1 SINGLE</b>	<a href="#">Buy now</a>
6	<a href="#">6GR8258A40</a> Helm harness (main/single)1.8m <b>UR *1 SINGLE</b>	<a href="#">Buy now</a>
7	<a href="#">6GR8258A10</a> Helm harness multi engines 0.9 <b>UR *1TWIN,TRIPLE,QUAD</b>	<a href="#">Buy now</a>
7	<a href="#">6GR8258A50</a> Helm harness multi engines 1.8 <b>UR *1 TWIN,TRIPLE,QUAD</b>	<a href="#">Buy now</a>
8	<a href="#">6GR8258A20</a> Helm harness 0.9m-3ft <b>*1 SINGLE</b>	<a href="#">Buy now</a>
9	<a href="#">6GR8258A30</a> Helm harness 0.9m-3ft <b>*1 TWIN,TRIPLE,QUAD</b>	<a href="#">Buy now</a>

# Meter 1

## DIGITAL TACHOMETER

Ref. No.	Description	Part No.	Applicable model
1	Multifunction w/o "Check engine" and "Water in fuel" indicators	6Y5-8350T-E0	Above 40 (3-cyl) w/ oil injection Above F30 [Mechanical HC]



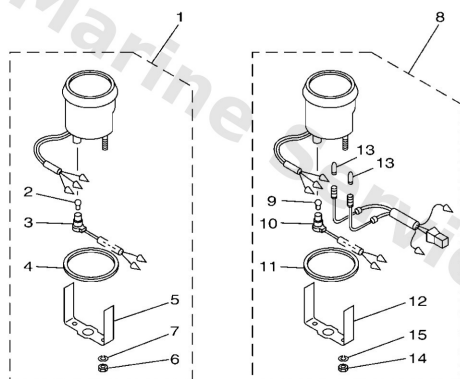
601M10M-R010

Ref	Part	
1	<a href="#">6Y58350TE0</a> Tachometer assembly	<a href="#">Buy now</a>
2	<a href="#">9E45004533</a> Housing, f-4-w(5pcs) F-4-W	<a href="#">Buy now</a>
3	<a href="#">6Y88438300</a> Nut, ring	<a href="#">Buy now</a>

## Meter 2

### ANALOG TACHOMETER

Ref. No.	Description	Part No.	Applicable model
1	Without indicators BLK panel	6Y7-83540-20	Above 9.9 (Pre-mixed) FT8 (T8), F9.9 -F25 (FT/T25)
	Without indicators WHT panel	6Y7-83540-30	
8	With overheat & oil indicators BLK panel	6Y7-83540-80	Above 40 (3-cyl) w/ oil injection Above F30 [Mechanical RC]
	With overheat & oil indicators WHT panel	6Y7-83540-90	



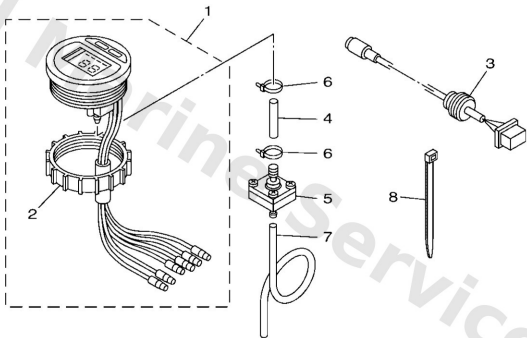
601M10M-P020

Ref	Part	
1	<a href="#">6Y78354020</a> Tachometer assembly UR WITHOUT OIL LAMP	<a href="#">Buy now</a>
1	<a href="#">6Y78354030</a> Tachometer assembly UR WITHOUT OIL LAMP	<a href="#">Buy now</a>
2	<a href="#">6Y58351700</a> Bulb (12v-1.7w)	<a href="#">Buy now</a>
3	<a href="#">6Y58353610</a> Socket, meter FOR 6Y7-83540-30	<a href="#">Buy now</a>
3	<a href="#">6Y58353640</a> Socket, meter FOR 6Y7-83540-20	<a href="#">Buy now</a>
4	<a href="#">6Y58352300</a> Damper	<a href="#">Buy now</a>
5	<a href="#">6Y58351400</a> Plate, fitting	<a href="#">Buy now</a>
6	<a href="#">9538005600</a> Nut, hexagon (663)	<a href="#">Buy now</a>
7	<a href="#">9299005100</a> Ybs67-5 washer, spring	<a href="#">Buy now</a>
8	<a href="#">6Y78354080</a> Tachometer assembly UR WITH OIL/TEMP LAMP	<a href="#">Buy now</a>
8	<a href="#">6Y78354090</a> Tachometer assembly UR WITH OIL/TEMP LAMP	<a href="#">Buy now</a>
13	<a href="#">6Y58351800</a> Bulb (12v-1.7w) t6.5	<a href="#">Buy now</a>

# Meter 3

## DIGITAL SPEEDOMETER

Ref. No.	Description	Part No.	Applicable model
1	Digital multifunction	6Y5-83570-A0	Above 40 (3-cyl) Above F30 (Mechanical RC)



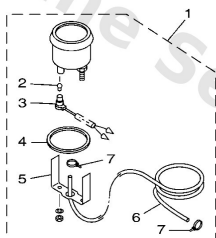
601M10M-R030

Ref	Part	
1	<a href="#">6Y583570A0</a> Speedometer assembly	<a href="#">Buy now</a>
2	<a href="#">6Y88438300</a> Nut, ring	<a href="#">Buy now</a>
3	<a href="#">6Y587122S0</a> Cord assembly 1	<a href="#">Buy now</a>
4	<a href="#">6Y58355731</a> Tube	<a href="#">Buy now</a>
5	<a href="#">6Y58372800</a> Connector assembly	<a href="#">Buy now</a>
6	<a href="#">9046511M10</a> Clamp	<a href="#">Buy now</a>
7	<a href="#">6Y58355700</a> Tube (8m)	<a href="#">Buy now</a>

## Meter 4

### ANALOG SPEEDOMETER

Description	Part No.	Applicable model
Analog, BLK panel 0 – 75 mph (20 – 120 km/h)	6Y7-83510-00	Above 40 (3-cyl) Above F30 (Mechanical RC)
Analog, WHT panel 0 – 75 mph (20 – 120 km/h)	6Y7-83510-10	
Analog, BLK panel 0 – 50 mph (20 – 80 km/h)	6Y7-83510-20	
Analog, WHT panel 0 – 50 mph (20 – 80 km/h)	6Y7-83510-30	
Analog, BLK panel 0 – 120 km/h (15 – 65 knot)	6Y7-83510-40	
Analog, WHT panel 0 – 120 km/h (15 – 65 knot)	6Y7-83510-50	
Analog, BLK panel 0 – 80 km/h (10 – 43 knot)	6Y7-83510-60	
Analog, WHT panel 0 – 80 km/h (10 – 43 knot)	6Y7-83510-70	



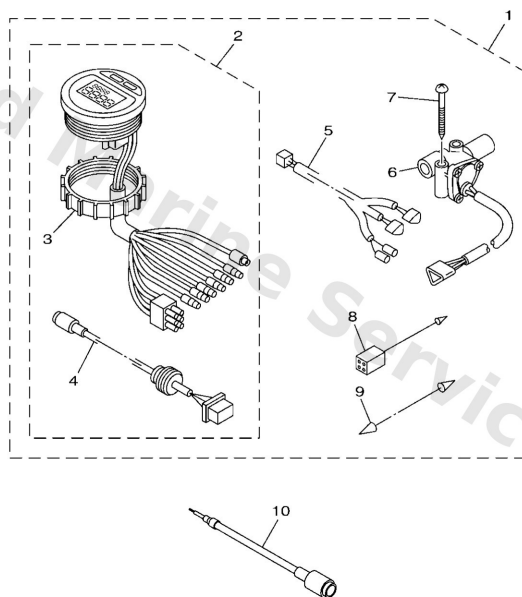
601M10M-K040

Ref	Part	
1	<a href="#">6Y78351000</a> Speedometer assembly (black) UR	<a href="#">Buy now</a>
1	<a href="#">6Y78351010</a> Speedometer assembly (white) UR	<a href="#">Buy now</a>
1	<a href="#">6Y78351020</a> Speedometer assembly (black) UR	<a href="#">Buy now</a>
1	<a href="#">6Y78351030</a> Speedometer assembly (50Mph) UR	<a href="#">Buy now</a>
1	<a href="#">6Y78351040</a> Speedometer assembly (120km/h) (bl) UR	<a href="#">Buy now</a>
1	<a href="#">6Y78351050</a> Speedometer assembly (120Km/H) UR	<a href="#">Buy now</a>
1	<a href="#">6Y78351060</a> Speedometer assembly (80km/h) (bla) UR	<a href="#">Buy now</a>
1	<a href="#">6Y78351070</a> Speedometer assembly (White) UR	<a href="#">Buy now</a>
2	<a href="#">6Y58351700</a> Bulb (12v-1.7w)	<a href="#">Buy now</a>
3	<a href="#">6Y58353640</a> Socket, meter	<a href="#">Buy now</a>
4	<a href="#">6Y58352300</a> Damper	<a href="#">Buy now</a>
5	<a href="#">6Y58351400</a> Plate, fitting	<a href="#">Buy now</a>
6	<a href="#">6888355700</a> Tube (8m)	<a href="#">Buy now</a>
7	<a href="#">9046511M10</a> Clamp	<a href="#">Buy now</a>

# Meter 5

## FUEL MANAGEMENT GAUGE

Ref. No.	Description	Part No.	Applicable model
1	Fuel mgt gauge kit For single-engine	6Y5-W0088-55	Above 115 HP engines
	Fuel mgt gauge kit For twin-engine	6Y5-W0088-66	



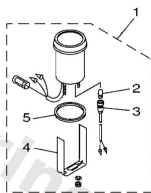
601M10M-R050

Ref	Part	
1	<a href="#">6Y5W008855</a> Digital fuel meter kit (single UR	<a href="#">Buy now</a>
1	<a href="#">6Y5W008866</a> Digital Fuel Meter Kit (Twin) UR	<a href="#">Buy now</a>
2	<a href="#">6Y58350FB0</a> Fuel meter movement assembly	<a href="#">Buy now</a>
3	<a href="#">6Y88438300</a> Nut, ring	<a href="#">Buy now</a>
4	<a href="#">6Y587122S0</a> Cord assembly 1	<a href="#">Buy now</a>
5	<a href="#">6Y583553F1</a> Wire, lead	<a href="#">Buy now</a>
6	<a href="#">6Y58575202</a> Sender unit assembly, fuel meter FOR 6Y5-W0088-55	<a href="#">Buy now</a>
7	<a href="#">9015806003</a> Screw, wood FOR 6Y5-W0088-55	<a href="#">Buy now</a>
8	<a href="#">6Y58211700</a> Wire, lead	<a href="#">Buy now</a>
9	<a href="#">7038253100</a> Wire, lead FOR 6Y5-W0088-66	<a href="#">Buy now</a>
10	<a href="#">6Y585721F0</a> Wire, lead AP	<a href="#">Buy now</a>

# Meter 6

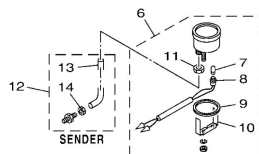
## ANALOG TRIM METER

Description	Part No.	Applicable model
4-pin coupler BLK panel	6Y7-83670-00	Pre-mixed w/ PTT
Bullet connector BLK panel	6Y7-83670-40	Above 40 (3-cyl) w/ oil injection & PTT, Above F30 w/ PTT (Mechanical RC), T25 (NOA) Use as a set with tachometer, 6Y7-83540-80
4-pin coupler WHT panel	6Y7-83670-20	Pre-mixed w/ PTT
Bullet connector WHT panel	6Y7-83670-50	Above 40 (3-cyl) w/ oil injection & PTT, Above F30 w/ PTT (Mechanical RC), T25 (NOA) Using as a set with tachometer, 6Y7-83540-90



## COOLANT PRESSURE METER

Description	Part No.	Applicable model
kPa, Black panel	6Y7-83660-00	
kPa, White panel	6Y7-83660-20	Above 40 (3-cyl)
psi, Black panel	6Y7-83660-10	Above F25 (F1/F125) (Mechanical RC)
psi, White panel	6Y7-83660-30	



601M10M-Q060

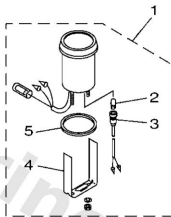
Ref	Part	
1	<a href="#">6Y78367000</a> Trim meter assembly. UR	<a href="#">Buy now</a>
1	<a href="#">6Y78367020</a> Trim meter assembly. UR	<a href="#">Buy now</a>
1	<a href="#">6Y78367040</a> Trim meter assembly. UR	<a href="#">Buy now</a>
1	<a href="#">6Y78367050</a> Trim Meter assembly. UR	<a href="#">Buy now</a>
2	<a href="#">6Y58351800</a> Bulb (12v-1.7w) t6.5	<a href="#">Buy now</a>
3	<a href="#">6Y58353600</a> Socket, meter	<a href="#">Buy now</a>
4	<a href="#">6Y58354400</a> Plate, fitting	<a href="#">Buy now</a>
5	<a href="#">6888366400</a> Damper	<a href="#">Buy now</a>
6	<a href="#">6Y78366000</a> Water pressure meter assembly UR	<a href="#">Buy now</a>
6	<a href="#">6Y78366010</a> Water Pressure Meter assembly UR	<a href="#">Buy now</a>
6	<a href="#">6Y78366020</a> Water Pressure Meter assembly UR	<a href="#">Buy now</a>
6	<a href="#">6Y78366030</a> Water Pressure Meter assembly UR	<a href="#">Buy now</a>
10	<a href="#">6888366500</a> Plate, fitting	<a href="#">Buy now</a>
11	<a href="#">6638366800</a> Nut, nipple	<a href="#">Buy now</a>
12	<a href="#">6888366700</a> Sender	<a href="#">Buy now</a>



# Meter 6

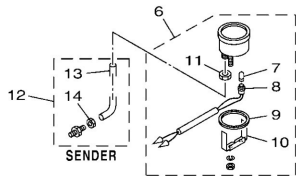
## ANALOG TRIM METER

Description	Part No.	Applicable model
4-pin coupler BLK panel	6Y7-83670-00	Pre-mixed w/ PTT
Bullet connector BLK panel	6Y7-83670-40	Above 40 (3-cyl) w/ oil injection & PTT, Above F30 w/ PTT [Mechanical RC], T25 (NOA) Use as a set with tachometer, 6Y7-83540-80
4-pin coupler WHT panel	6Y7-83670-20	Pre-mixed w/ PTT
Bullet connector WHT panel	6Y7-83670-50	Above 40 (3-cyl) w/ oil injection & PTT, Above F30 w/ PTT [Mechanical RC], T25 (NOA) Using as a set with tachometer, 6Y7-83540-90



## COOLANT PRESSURE METER

Description	Part No.	Applicable model
kPa, Black panel	6Y7-83660-00	
kPa, White panel	6Y7-83660-20	Above 40 (3-cyl)
psi, Black panel	6Y7-83660-10	Above F25 (F1/T25) [Mechanical RC]
psi, White panel	6Y7-83660-30	



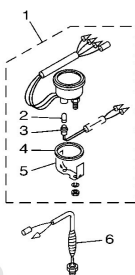
601M10M-Q060

Ref	Part	
13	<a href="#">6888366600</a> Tube	<a href="#">Buy now</a>

# Meter 7

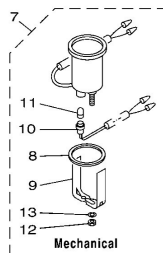
## COOLANT TEMP. METER

Description	Part No.	Applicable model
Black panel	6Y7-83590-00	Above 40 [3-cylinder]
White panel	6Y7-83590-10	Above F25 (F1/T25) [Mechanical RC]

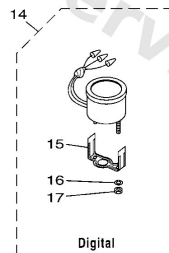


## HOUR METER

Ref. No.	Description	Part No.	Applicable model
7	Mechanical	6Y5-83504-01	
14	Digital, Black panel	6Y7-83504-00	All electrical start models
	Digital, White panel	6Y7-83504-10	



Mechanical



Digital

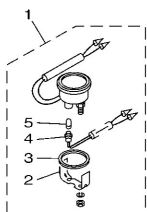
601M10M-K070

Ref	Part	
1	<a href="#">6Y78359000</a> Water temperature assembly UR	<a href="#">Buy now</a>
1	<a href="#">6Y78359010</a> Water temperature assembly UR	<a href="#">Buy now</a>
2	<a href="#">6Y58351800</a> Bulb (12v-1.7w) t6.5	<a href="#">Buy now</a>
3	<a href="#">6Y58353600</a> Socket, meter	<a href="#">Buy now</a>
4	<a href="#">6888366400</a> Damper	<a href="#">Buy now</a>
5	<a href="#">6Y58354400</a> Plate, fitting	<a href="#">Buy now</a>
6	<a href="#">6888359100</a> Thermo unit	<a href="#">Buy now</a>
7	<a href="#">6Y58350401</a> Hour meter assembly	<a href="#">Buy now</a>
9	<a href="#">6Y58357700</a> Plate, fitting	<a href="#">Buy now</a>
12	<a href="#">9530304600</a> Nut, hexagon (663)	<a href="#">Buy now</a>
13	<a href="#">9299004100</a> Ybs67-4 washer, spring	<a href="#">Buy now</a>
14	<a href="#">6Y78350400</a> Hour meter assembly UR	<a href="#">Buy now</a>
14	<a href="#">6Y78350410</a> Hour meter assembly UR	<a href="#">Buy now</a>
15	<a href="#">6Y58355XH0</a> Bracket, meter 1	<a href="#">Buy now</a>
17	<a href="#">9538004600</a> Nut,hex	<a href="#">Buy now</a>

# Meter 8

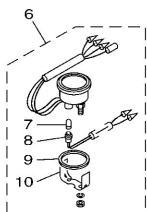
## VOLTAGE METER

Description	Part No.	Applicable model
DC 12 volt power supply Black panel	6Y7-83503-00	All electrical start models
DC 12 volt power supply White panel	6Y7-83503-10	



## FUEL METER

Description	Part No.	Applicable model
For Yamaha sensor (5 – 105Ω) Black panel	6Y7-85750-00	All electrical start models
For ABYC sensor (30 – 240Ω) Black panel	6Y7-85750-10	
For Yamaha sensor (5 – 105Ω) White panel	6Y7-85750-20	
For ABYC sensor (30 – 240Ω) White panel	6Y7-85750-30	

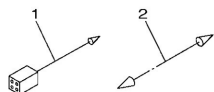


601M10M-P080

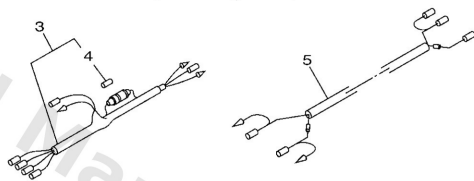
Ref	Part	
1	<a href="#">6Y78350300</a> Voltmeter assembly UR	<a href="#">Buy now</a>
1	<a href="#">6Y78350310</a> Voltmeter assembly UR	<a href="#">Buy now</a>
2	<a href="#">6Y58354400</a> Plate, fitting	<a href="#">Buy now</a>
3	<a href="#">6888366400</a> Damper	<a href="#">Buy now</a>
4	<a href="#">6Y58353600</a> Socket, meter	<a href="#">Buy now</a>
5	<a href="#">6Y58351800</a> Bulb (12v-1.7w) t6.5	<a href="#">Buy now</a>
6	<a href="#">6Y78575000</a> Fuel meter assembly UR	<a href="#">Buy now</a>
6	<a href="#">6Y78575010</a> Fuel meter assembly UR	<a href="#">Buy now</a>
6	<a href="#">6Y78575020</a> Fuel meter assembly UR	<a href="#">Buy now</a>
6	<a href="#">6Y78575030</a> Fuel meter assembly UR	<a href="#">Buy now</a>

# Wire Harness 1

## ACCESSORY LEAD

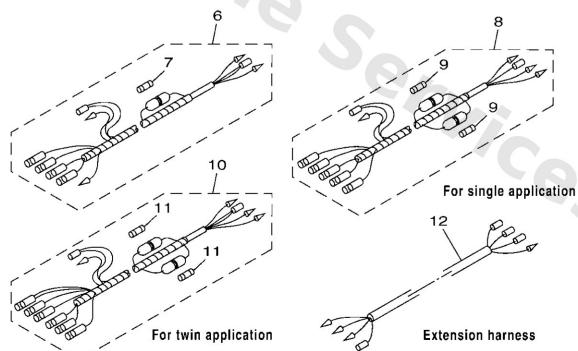


## METER HARNESS (For analog meter)



For pre-mixed model

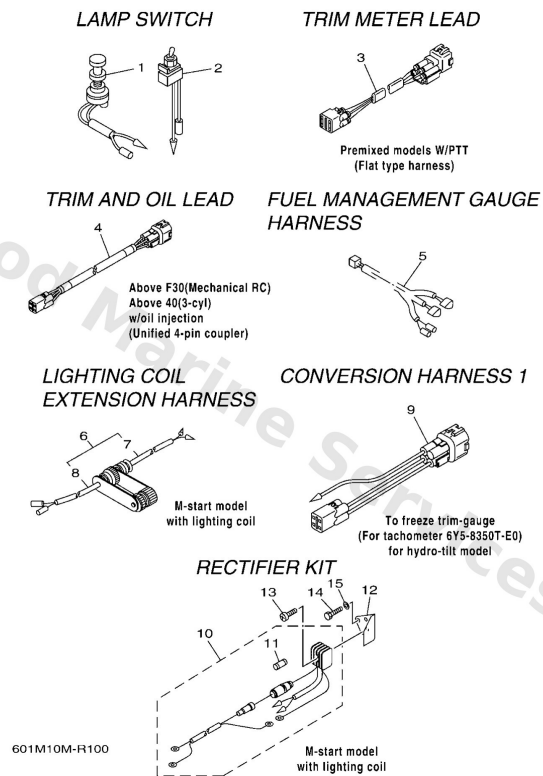
## METER HARNESS (For digital meter)



601M10M-Q090

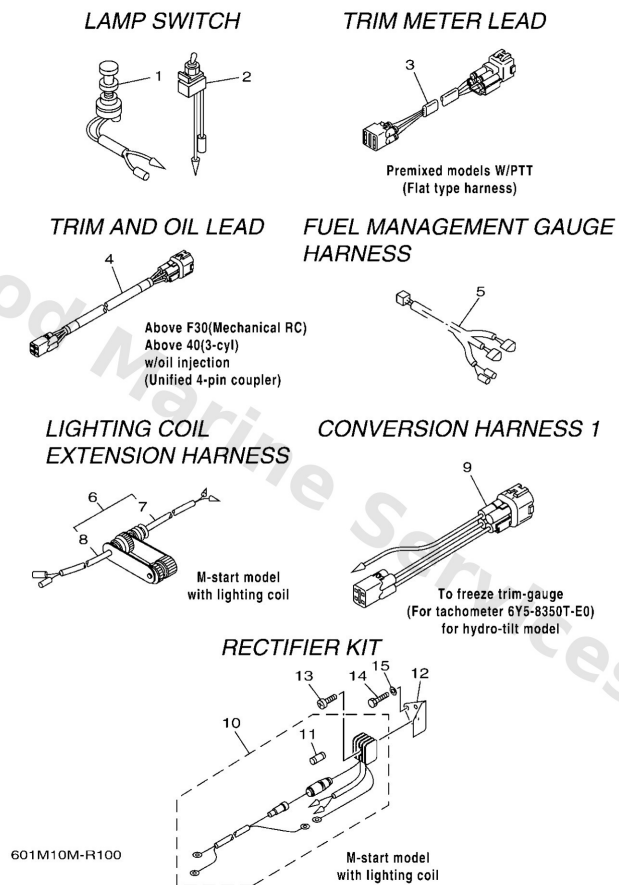
Ref	Part	
1	<a href="#">6Y58211700</a> Wire, lead UR	<a href="#">Buy now</a>
1	<a href="#">6Y58214900</a> Wire, lead 3 UR	<a href="#">Buy now</a>
2	<a href="#">7038253100</a> Wire, lead L/H MODEL	<a href="#">Buy now</a>
3	<a href="#">6Y58355300</a> Wire, lead (l=2.5m)	<a href="#">Buy now</a>
4	<a href="#">1E68215100</a> Fuse (10a)	<a href="#">Buy now</a>
5	<a href="#">6Y58355310</a> Wire, lead	<a href="#">Buy now</a>
6	<a href="#">6Y58355320</a> Wire, lead (l=2.5m) L/H MODEL	<a href="#">Buy now</a>
8	<a href="#">6Y583553M0</a> Wire, lead (l=2.5m)	<a href="#">Buy now</a>
10	<a href="#">6Y583553N0</a> Wire, lead (l=2.5m)	<a href="#">Buy now</a>
12	<a href="#">6Y58356N00</a> Wire, lead	<a href="#">Buy now</a>

## Wire Harness 2



Ref	Part	
1	<a href="#">6888252000</a> Lamp switch assembly	<a href="#">Buy now</a>
2	<a href="#">6888252600</a> Switch, lamp	<a href="#">Buy now</a>
3	<a href="#">6R38255330</a> Wire, lead UR (4P)	<a href="#">Buy now</a>
3	<a href="#">6R38255350</a> Wire, lead UR (4P)	<a href="#">Buy now</a>
3	<a href="#">6R38255370</a> Extension, wire lead (for trim UR (4P)	<a href="#">Buy now</a>
3	<a href="#">6R38255380</a> Wire, lead UR (4P)	<a href="#">Buy now</a>
3	<a href="#">6R38255390</a> Extension, wire lead (for trim UR (4P)	<a href="#">Buy now</a>
4	<a href="#">6Y58365300</a> Wire, lead UR 4P,5M	<a href="#">Buy now</a>
4	<a href="#">6Y58365310</a> Wire, lead UR 4P,6M	<a href="#">Buy now</a>
4	<a href="#">6Y58365320</a> Wire, lead UR 4P,7M	<a href="#">Buy now</a>
4	<a href="#">6Y58365330</a> Wire, lead UR 4P,8M	<a href="#">Buy now</a>
4	<a href="#">6Y58365340</a> Wire, lead UR 4P,9M	<a href="#">Buy now</a>
4	<a href="#">6Y58365350</a> Trim oil harness UR 4P,10.5M	<a href="#">Buy now</a>
5	<a href="#">6Y583553F1</a> Wire, lead	<a href="#">Buy now</a>
6	<a href="#">6828438000</a> 2p concent assembly	<a href="#">Buy now</a>

## Wire Harness 2



Ref	Part	
7	<a href="#">6828438100</a> 2p concent 1	<a href="#">Buy now</a>
8	<a href="#">6828438200</a> 2p concent 2	<a href="#">Buy now</a>
9	<a href="#">6Y58350U10</a> Wire, Lead	<a href="#">Buy now</a>
10	<a href="#">6768197001</a> Rectifier assembly	<a href="#">Buy now</a>
11	<a href="#">6638215100</a> Fuse	<a href="#">Buy now</a>
12	<a href="#">*</a> item_description LM	<a href="#">Buy now</a>
13	<a href="#">9788005025</a> Screw, panhead (a93)	<a href="#">Buy now</a>
14	<a href="#">9701306010</a> Bolt(63v)	<a href="#">Buy now</a>
15	<a href="#">9290306600</a> Washer, plain (646)	<a href="#">Buy now</a>

# Disclaimer

This document is provided for convenience only. It is **not** an official Yamaha publication and is **not supplied, endorsed, or approved** by Yamaha Motor Co., Ltd.

Reasonable efforts are made to keep information accurate; however diagrams, part references, supersessions, descriptions, and applicability may contain errors or omissions. Specifications and part availability may change without notice.

You are responsible for confirming the correct parts for your engine (including model code, year, serial range, and any superseded part numbers) before ordering or fitting.