



Yamaha RIGGING - STEERING 2021

Parts Manual

www.floodmarine.co.uk
+44 2882 246 539
Authorised Yamaha Dealers

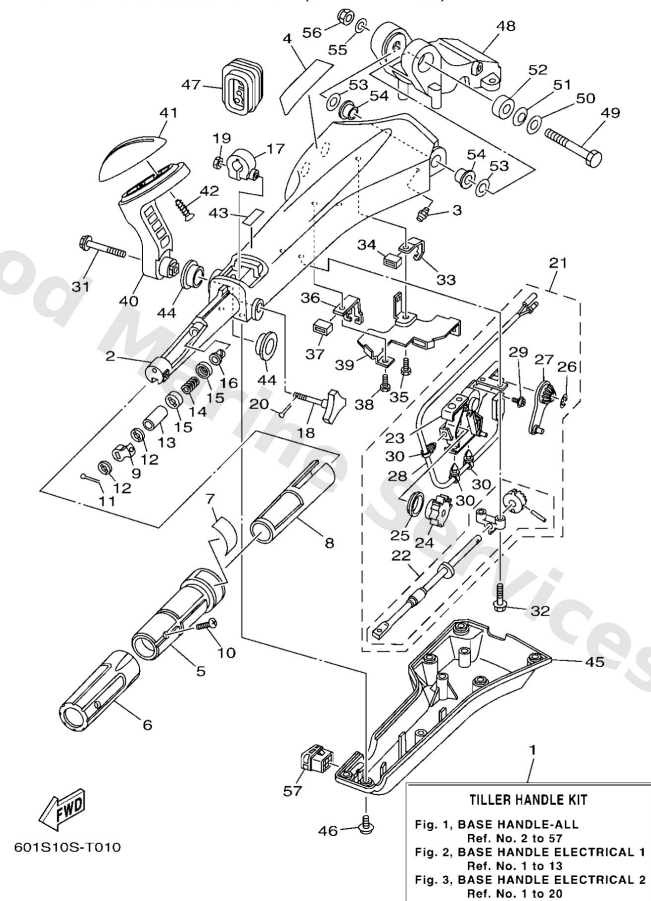


Contents

BASE HANDLE - ALL	3
BASE HANDLE ELECTRICAL 1	7
BASE HANDLE ELECTRICAL 2	8
FITTING KIT 1	10
FITTING KIT 2	12
FITTING KIT 3	13
FITTING KIT 4	14
FITTING KIT 5	15
STEERING FRICTION 1	16
STEERING FRICTION 2	18
STEERING FRICTION 3	20
STEERING FRICTION 4	22
STEERING FRICTION 5	24
STEERING FRICTION 6	25
STEERING FRICTION 7	27
STEERING FRICTION 8	28
STEERING FRICTION 9	29
TILLER HANDLE KIT 1	30
TILLER HANDLE KIT 2	34

Base Handle - All

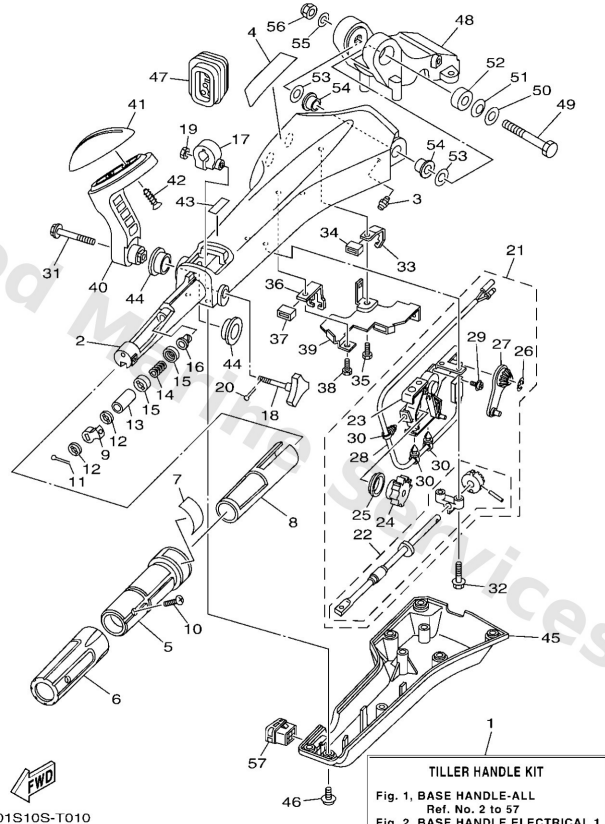
6X4 TILLER HANDLE KIT (F20B-F130A)



Ref	Part	
1	6X4421035C - LM FOR USA,CAN	Buy now
1	6X4421036A Handle main body (led/ycop) LM FOR EUR,OCE	Buy now
2	6X442111028D Handle, steering	Buy now
3	9370006002 Nipple, grease	Buy now
4	6X44821500 Graphic	Buy now
5	6X44211901 Grip, steering handle	Buy now
6	6X44217701 Rubber, handle	Buy now
7	6X44213700 Indicator, throttle	Buy now
8	6X44129100 Bushing	Buy now
9	6X44413901 Collar	Buy now
10	9015205007 Screw, countersunk	Buy now
11	9149020010 Pin, cotter	Buy now
12	6X44417700 Washer	Buy now
13	6X44212800 Collar, distance 1	Buy now
14	9050123215 Spring (655)	Buy now

Base Handle - All

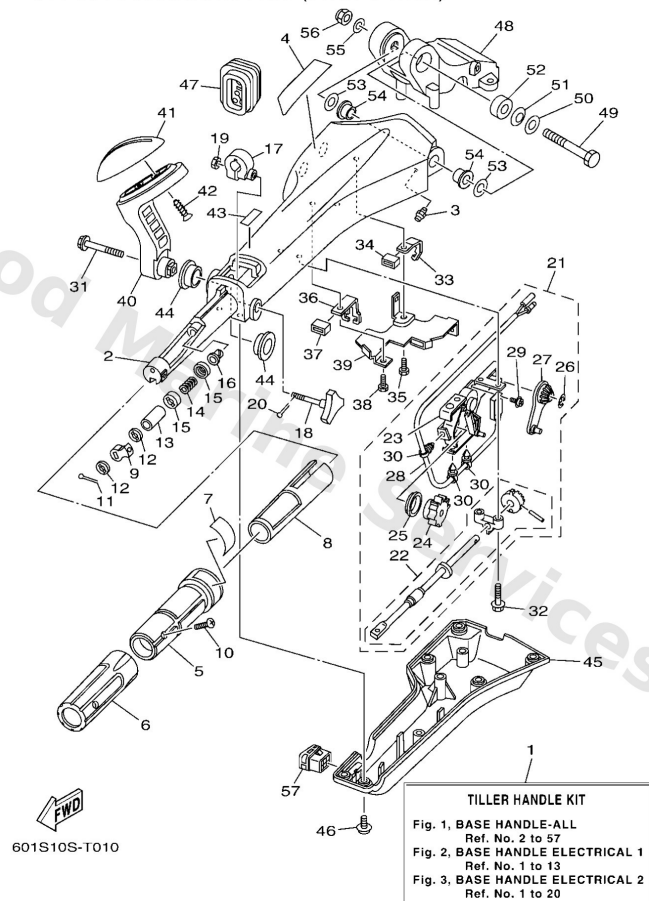
6X4 TILLER HANDLE KIT (F20B-F130A)



Ref	Part	
15	6X44418800 Washer	Buy now
16	9038608032 Bushing (650)	Buy now
17	63D4212600 Friction, steering handle grip	Buy now
18	6X44815400 Knob, throttle	Buy now
19	9538006600 Nut(661)	Buy now
21	6X44410001 Shift link assembly	Buy now
22	6X44211500 Shaft, steering handle	Buy now
23	6X44410200 Shift assist assembly.	Buy now
24	6X44773101 Gear, drive	Buy now
25	6X44413200 Bushing	Buy now
26	6X41413700 Clip	Buy now
27	6X44826100 Arm, throttle	Buy now
28	6X48254000 Neutral switch assembly	Buy now
29	7034812900 Screw 3	Buy now
30	6X44282100 Band, clamp	Buy now

Base Handle - All

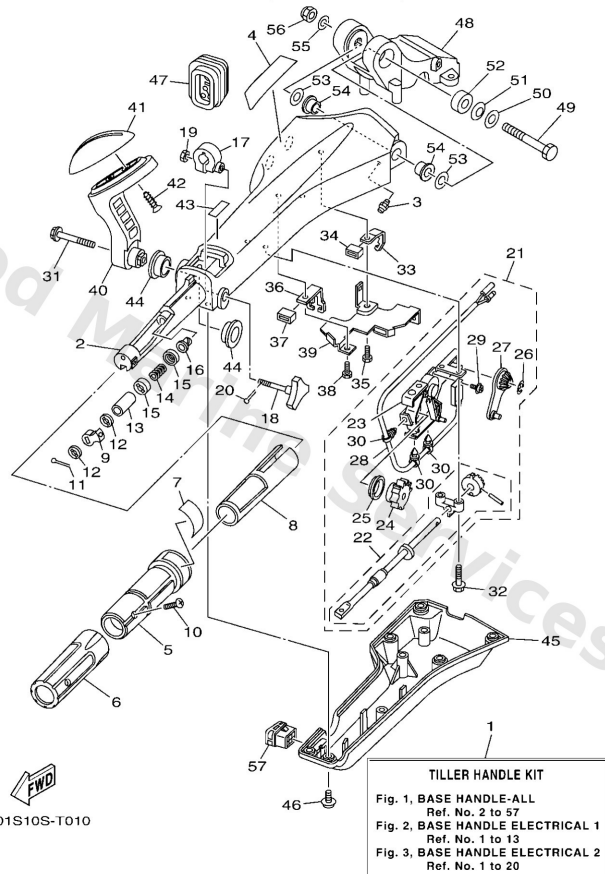
6X4 TILLER HANDLE KIT (F20B-F130A)



Ref	Part	
31	97E9508540 Bolt, hexagon w/w deep recess	Buy now
32	97E9506530 Bolt, hexagon w/w deep recess	Buy now
33	6X44853800 Clamp, cable 1	Buy now
34	6X42636701 Protector	Buy now
35	97D9506014 Bolt, hexagon deep recess	Buy now
36	6X44853810 Clamp, cable 1	Buy now
39	6X44215900 Stay	Buy now
40	6X444159A08D Handle, gear shift	Buy now
41	6X44417300 Lever, shift control	Buy now
42	9778060920 Screw, tapping	Buy now
43	6G84419100 Indicator, shift	Buy now
44	9038626MA3 Bush	Buy now
45	6X44213101 Cover, handle steering FOR USA,CAN	Buy now
45	6X44213111 Cover, handle steering FOR EUR,OCE	Buy now
46	9798506216 Screw, with washer(6h2)	Buy now

Base Handle - All

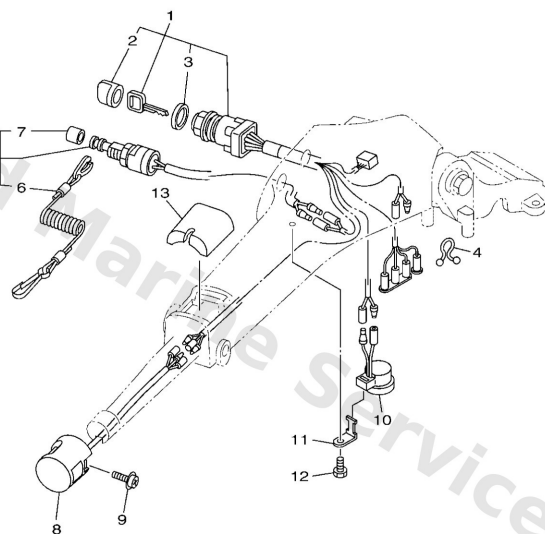
6X4 TILLER HANDLE KIT (F20B-F130A)



Ref	Part	
47	6X44272501 Grommet	Buy now
48	63D42121228D Bracket	Buy now
49	9010112014 Bolt	Buy now
50	9299012200 Ybs66-12 washer,plain	Buy now
51	9020612M22 Washer, wave(6b0)	Buy now
52	9038712M02 Collar(6b0)	Buy now
53	9020112035 Washer, plate	Buy now
54	9038612003 Bush	Buy now
55	9299012600 Washer, plate(663)	Buy now
56	9018512M12 Nut, self-locking(6e5)	Buy now
57	6X44272810 Cap	Buy now

Base Handle Electrical 1

6X4 TILLER HANDLE KIT
(F20B-F130A FOR USA,CANADA)

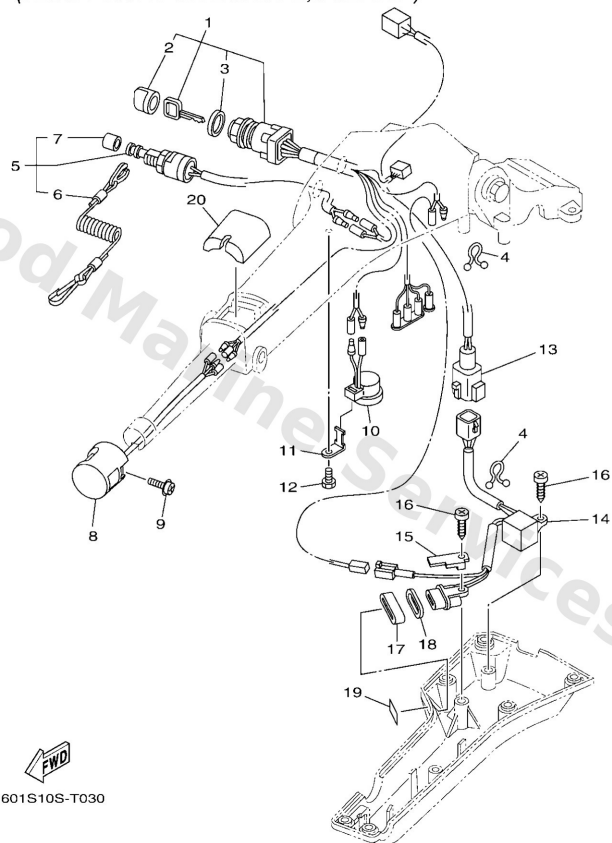



601S10S-T020

Ref	Part	
1	6X48251002 Main switch assembly	Buy now
2	6768257701 Cap, key	Buy now
3	7038253200 Cap	Buy now
4	9046408M07 Clamp	Buy now
5	69W8257500 Engine stop switch assembly	Buy now
6	6828255600 Lanyard, stop switch	Buy now
7	6898257Y00 Cap	Buy now
8	6X48256301 Trim & tilt switch assembly	Buy now
9	9798006216 Screw, with washer(6h2)	Buy now
10	6X48338300 Buzzer	Buy now
11	6X48338600 Stay, buzzer	Buy now
12	97D9506014 Bolt, hexagon deep recess	Buy now
13	6X48194201 Cover	Buy now

Base Handle Electrical 2

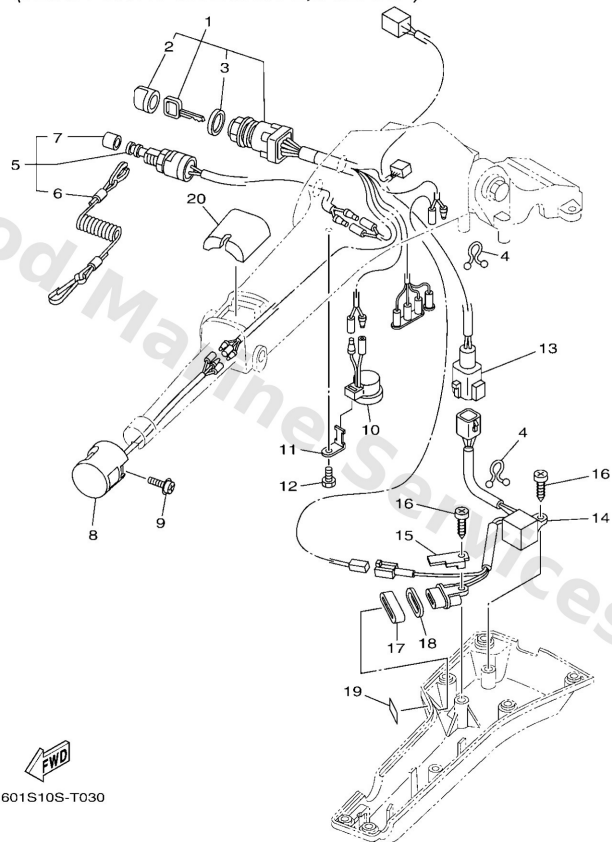
6X4 TILLER HANDLE KIT
(F20G-F130A FOR EUROPE, OCEANIA)



Ref	Part	
1	6X48251042 Main switch assembly	Buy now
2	6768257701 Cap, key	Buy now
3	7038253200 Cap	Buy now
4	9046408M07 Clamp	Buy now
5	69W8257500 Engine stop switch assembly	Buy now
6	6828255600 Lanyard, stop switch	Buy now
7	6898257Y00 Cap	Buy now
8	6X48256301 Trim & tilt switch assembly	Buy now
9	9798006216 Screw, with washer(6h2)	Buy now
10	6X48338300 Buzzer	Buy now
11	6X48338600 Stay, buzzer	Buy now
12	97D9506014 Bolt, hexagon deep recess	Buy now
13	6X48365320 Wire, lead (l: 700mm)	Buy now
14	6C58430100 Pilot light assembly 1	Buy now
15	6X44411400 Stopper	Buy now

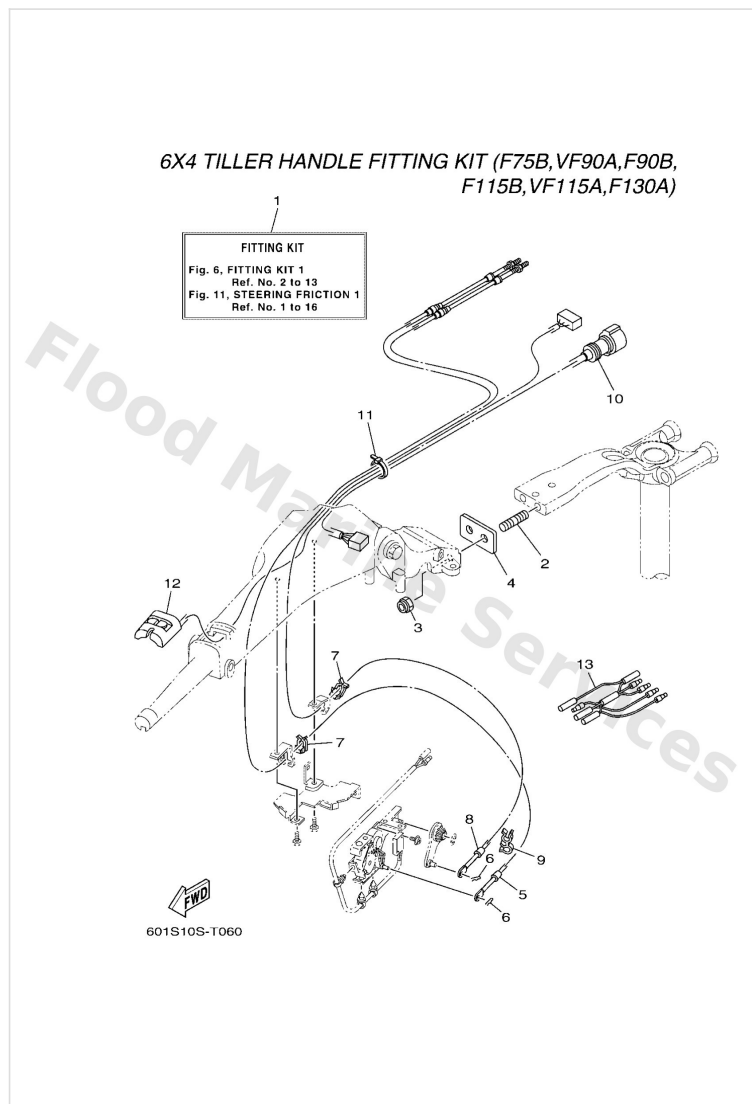
Base Handle Electrical 2

6X4 TILLER HANDLE KIT
(F20G-F130A FOR EUROPE, OCEANIA)



Ref	Part	
16	9778060620 Screw, tapping(6k8)	Buy now
17	6X44272701 Grommet	Buy now
18	6H48358900 Gasket	Buy now
19	6X48541500 Mark, signal lamp	Buy now
20	6X48194201 Cover	Buy now

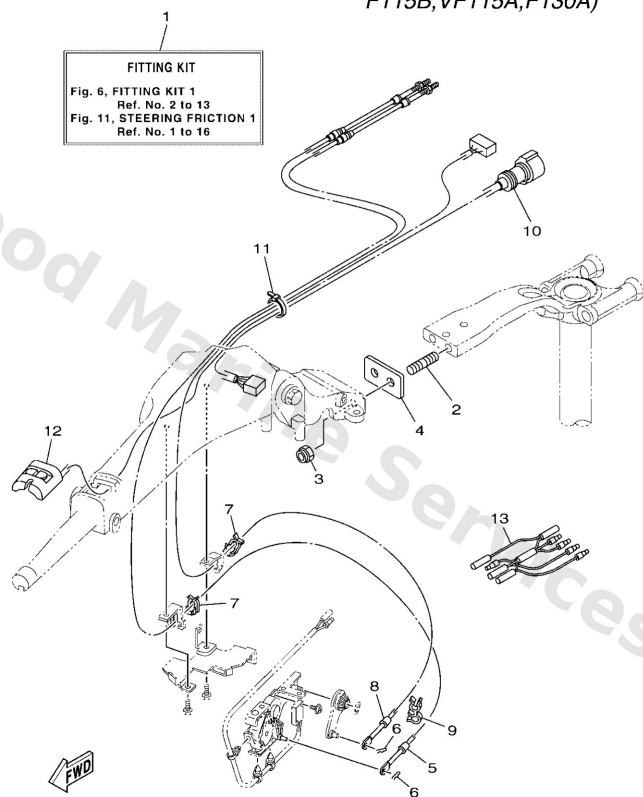
Fitting Kit 1



Ref	Part	
1	6X442102C3 Tiller kit f115lb/(l)f115xb LM FOR EUR,OCE	Buy now
1	6X442102H3 - LM FOR USA,CAN	Buy now
1	6X442102J3 - LM FOR USA,CAN	Buy now
2	9011610063 Bolt, stud	Buy now
3	9018510027 Nut, self-locking	Buy now
4	6EK4212100 Bracket	Buy now
5	6EK4832100 Cable	Buy now
6	9046810005 Pin, hair 6264123500	Buy now
7	63D4853800 Clamp, cable 1	Buy now
8	6EK2630100 Throttle cable assembly FOR 6X4-42102-H3/C3	Buy now
8	6FP2630100 Throttle cable assembly FOR 6X4-42102-J3	Buy now
9	9046409M42 Clamp(6b0)	Buy now
10	6X48258610 Ext., wire harness (l:950mm)	Buy now
11	9046513M24 Band, switch cord	Buy now
12	6X48186000 Switch assembly	Buy now

Fitting Kit 1

6X4 TILLER HANDLE FITTING KIT (F75B,VF90A,F90B,
F115B,VF115A,F130A)

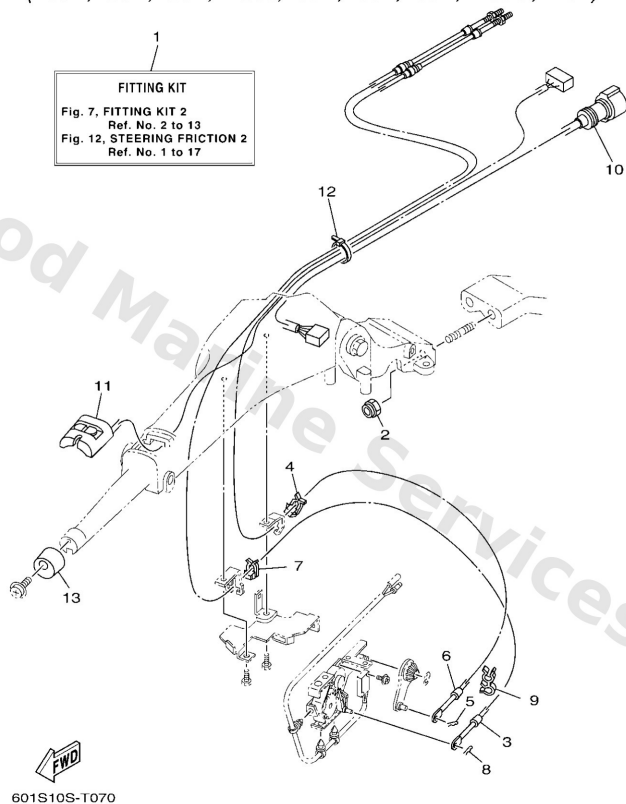


601S10S-T060

Ref	Part	
13	6X48252100 Wire, lead FOR 6X4-42102-H3/J3	Buy now

Fitting Kit 2

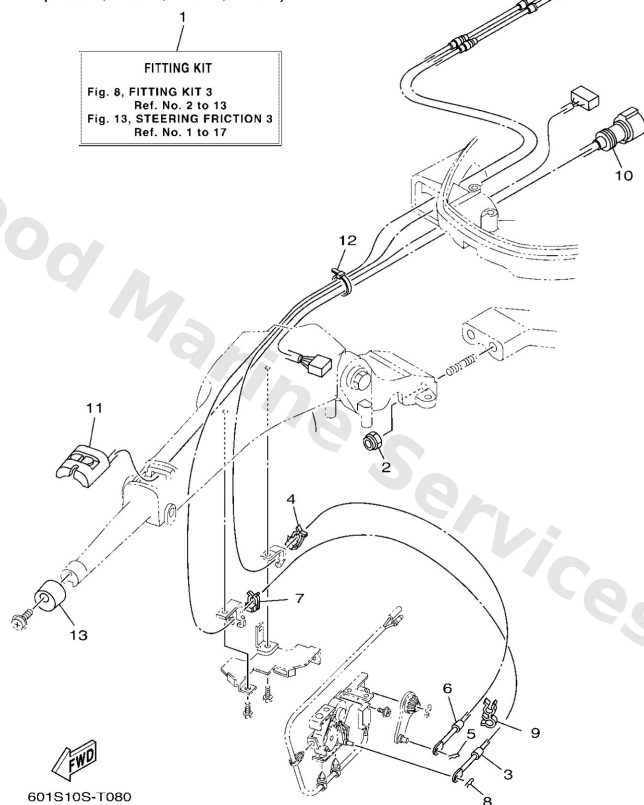
6X4 TILLER HANDLE FITTING KIT
(F50B,F50H,T50B,FT50J,F60B,F60F,T60B,FT60G,F70A)



Ref	Part	
1	6X44210224 - LM FOR USA,CAN	Buy now
1	6X44210293 Till f50h/ft50j/f60f/ft60g/f70 LM FOR EUR,OCE	Buy now
2	9018510027 Nut, self-locking	Buy now
3	67C4832111 Cable	Buy now
4	63D4853800 Clamp, cable 1	Buy now
5	9046810005 Pin, hair 6264123500	Buy now
6	69W2630100 Throttle cable assembly	Buy now
9	9046409M42 Clamp(6b0)	Buy now
10	6X48258610 Ext., wire harness (l:950mm)	Buy now
11	6X48186000 Switch assembly	Buy now
12	9046513M36 Clamp(6h4)	Buy now
13	6X44272800 Cap FOR EUR,OCE	Buy now

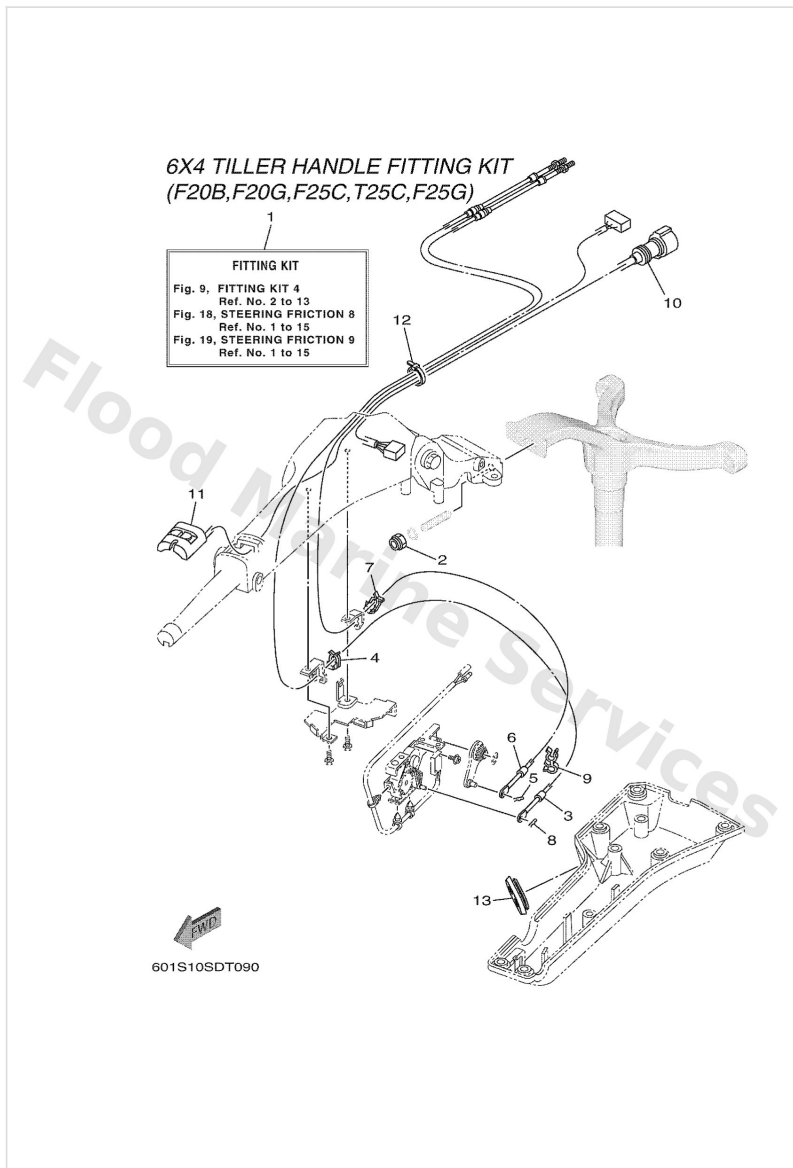
Fitting Kit 3

6X4 TILLER HANDLE FITTING KIT
(F30A, F30B, F40A, F40F)



Ref	Part	
1	6X44210272 - LM FOR USA,CAN	Buy now
1	6X44210283 Tiller handle fit f30b / f40f LM FOR EUR,OCE	Buy now
2	9018510027 Nut, self-locking	Buy now
3	67C4832111 Cable	Buy now
4	63D4853800 Clamp, cable 1	Buy now
5	9046810005 Pin, hair 6264123500	Buy now
6	69W2630100 Throttle cable assembly	Buy now
9	9046409M42 Clamp(6b0)	Buy now
10	6X48258610 Ext., wire harness (l:950mm)	Buy now
11	6X48186000 Switch assembly	Buy now
12	9046513M36 Clamp(6h4)	Buy now
13	6X44272800 Cap FOR EUR,OCE	Buy now

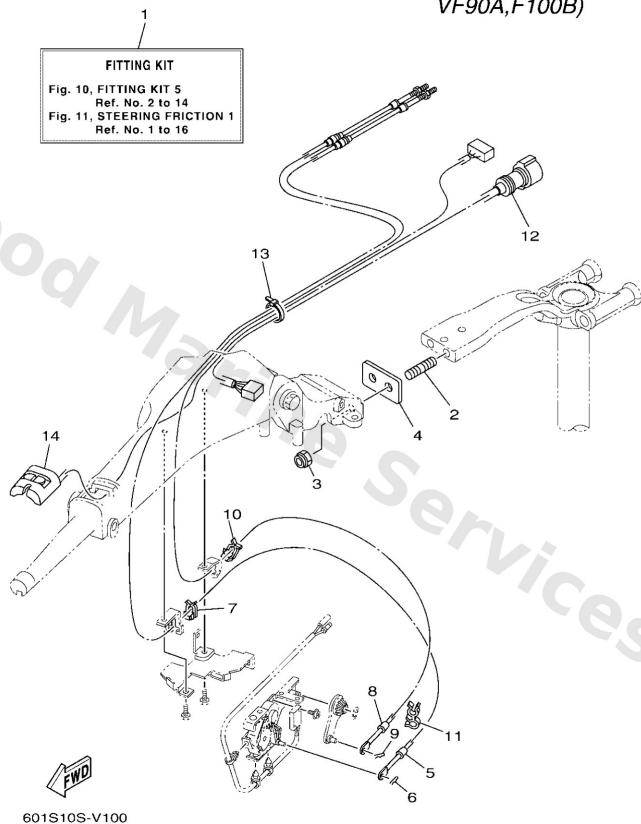
Fitting Kit 4



Ref	Part	
1	6X442102E2 - LM FOR USA,CAN	Buy now
1	6X442102F2 Fitting kit f25g LM FOR EUR,OCE	Buy now
1	6X442102K2 - LM FOR USA,CAN	Buy now
1	6X442102L2 Fitting kit f20g LM FOR EUR,OCE	Buy now
2	9018510027 Nut, self-locking	Buy now
3	63D4832111 Cable	Buy now
4	63D4853800 Clamp, cable 1	Buy now
5	9046810005 Pin, hair 6264123500	Buy now
6	6FM2630110 Throttle cable assembly	Buy now
9	9046409M42 Clamp(6b0)	Buy now
10	6X48258610 Ext., wire harness (l:950mm)	Buy now
11	6X48186000 Switch assembly	Buy now
12	9046513M39 Clamp(6e8)	Buy now
13	6H34272701 Grommet FOR EUR,OCE	Buy now

Fitting Kit 5

6X4 TILLER HANDLE FITTING KIT (F75B,F80B,F90B,
VF90A,F100B)

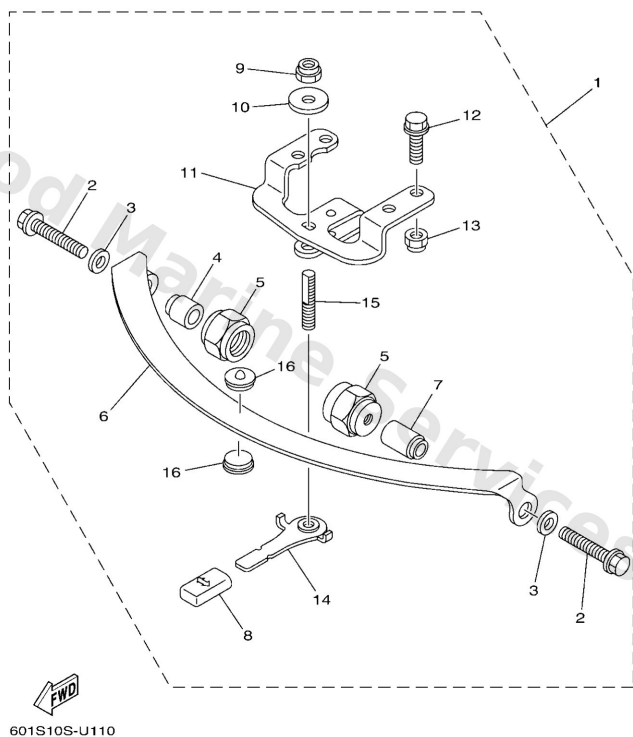


Ref	Part	
1	6X442102G3 Tiller fitting kit, f80d-f100f LM FOR EUR,OCE	Buy now
2	9011610063 Bolt, stud	Buy now
3	9018510027 Nut, self-locking	Buy now
4	6EK4212100 Bracket	Buy now
5	6EK4832100 Cable	Buy now
6	9046810005 Pin, hair 6264123500	Buy now
7	63D4853800 Clamp, cable 1	Buy now
8	6FP2630100 Throttle cable assembly	Buy now
11	9046409M42 Clamp(6b0)	Buy now
12	6X48258610 Ext., wire harness (l:950mm)	Buy now
13	9046513M24 Band, switch cord	Buy now
14	6X48186000 Switch assembly	Buy now

Steering Friction 1

STEERING FRICTION

Part No.	Applicable model
67G-42508-12	F75D(F75B), F75F, F80D (F80B), VF90A, F90C(F90B), F100B, F100G, F115B (F115B), VF115A, F130A (F130A)

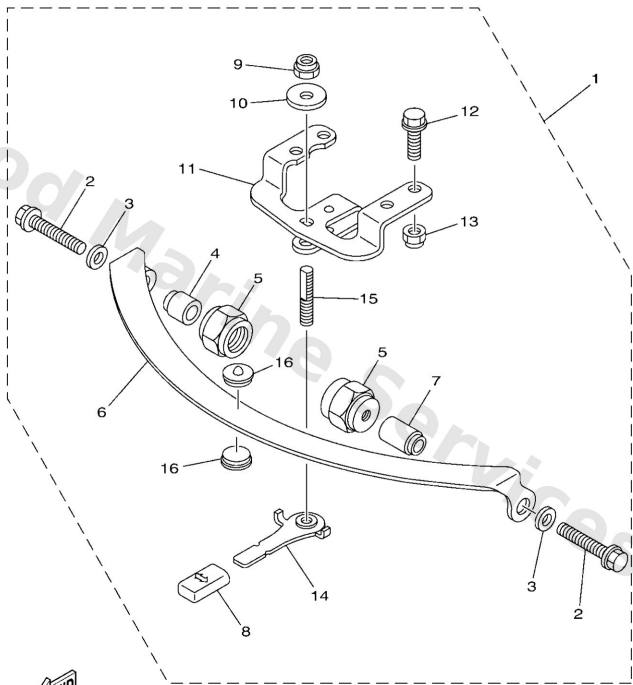


Ref	Part	
1	67G4250812 Steering friction assembly	Buy now
2	9011908198 Bolt, with washer	Buy now
3	9020108M01 Washer, plate(6I2)	Buy now
4	67G4254100 Pipe 1	Buy now
5	67G4254600 Nut	Buy now
6	63D4252700 Plate, friction	Buy now
7	67G4254110 Pipe 1	Buy now
8	6824331801 Cover	Buy now
9	9018510M14 Nut, self-locking	Buy now
10	9020110M76 Washer, plate (6e5)	Buy now
11	6X44252600 Plate, friction	Buy now
12	97E9508525 Bolt, hexagon w/w deep recess	Buy now
13	9018508057 Nut, nylon (6j8)	Buy now
14	67G4256100 Knob, steering lock	Buy now
15	67G4256200 Shaft, steering lock	Buy now

Steering Friction 1

STEERING FRICTION

Part No.	Applicable model
67G-42508-12	F75D(F75B), F75F, F80D (F80B), VF90A, F90C(F90B), F100B, F100G,F115B (F115B), VF115A, F130A (F130A)



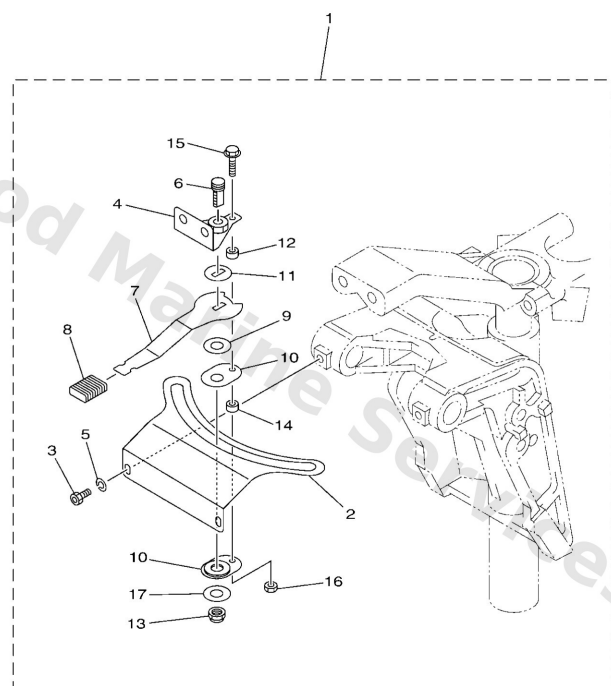
601S10S-U110

Ref	Part	
16	63D4252800 Plate, friction	Buy now

Steering Friction 2

STEERING FRICTION

Part No.	Applicable model
6C5-42508-02	F40H, F40G, F50H (F50B), FT50J (T50B), F60F (F60B), FT60G (T60B), F70A(F70A)



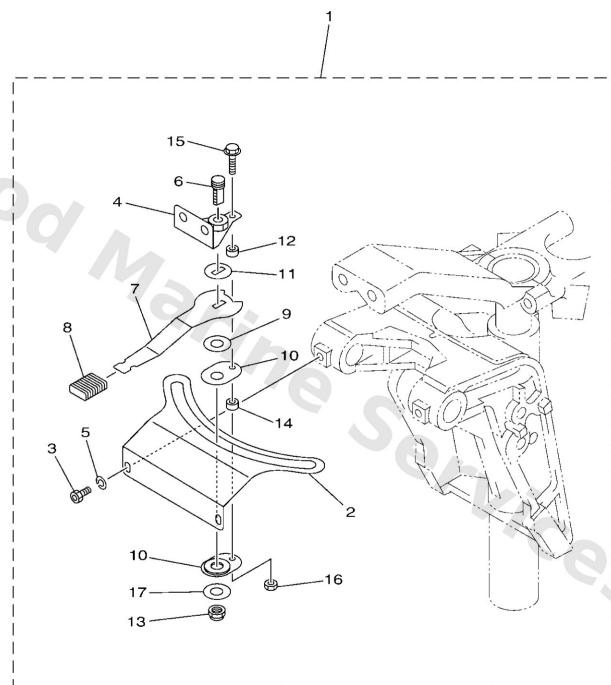
601S10S-V120

Ref	Part	
1	6C54250802 Steering friction assembly	Buy now
2	6C54252700 Plate, friction	Buy now
3	9010906M88 Bolt(61a)	Buy now
4	67C4252500 Plate, friction	Buy now
5	9299006100 Washer(6a1)	Buy now
6	67C42562A0 Shaft, steering lock	Buy now
7	67C4256100 Knob, steering lock	Buy now
8	6894363301 Cover, tilt lever	Buy now
9	9020210M56 Washer, plate	Buy now
10	65W4252800 Plate, friction	Buy now
11	9020910M26 Washer	Buy now
12	9038705053 Collar	Buy now
13	9018510M14 Nut, self-locking	Buy now
14	9038705054 Collar	Buy now
15	9759505520 Bolt, With Washer	Buy now

Steering Friction 2

STEERING FRICTION

Part No.	Applicable model
6C5-42508-02	F40H, F40G, F50H (F50B), FT50J (T50B), F60F (F60B), FT60G (T60B), F70A(F70A)



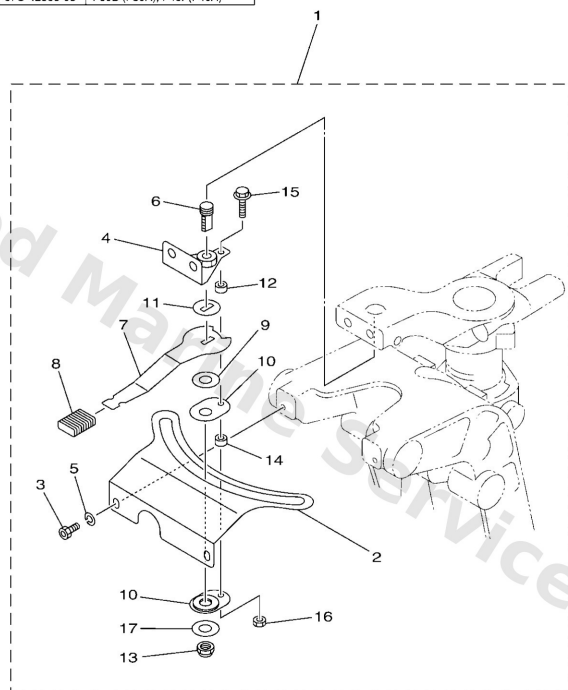
601S10S-V120

Ref	Part	
16	9538005600 Nut, hexagon (663)	Buy now
17	90201106M5 Washer, plate(3gm)	Buy now

Steering Friction 3

STEERING FRICTION

Part No.	Applicable model
67C-42508-05	F30B (F30A), F40F(F40A)



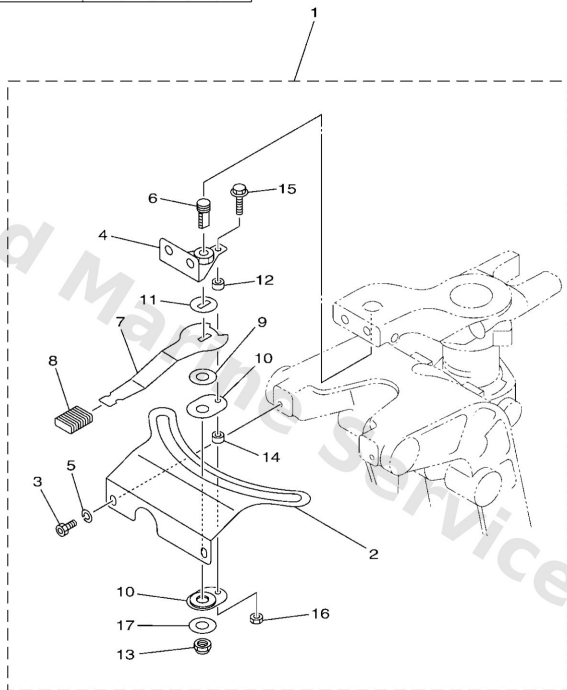
601S10S-V130

Ref	Part	
1	67C4250805 Steering friction assembly	Buy now
2	67C4252703 Plate, friction	Buy now
3	9010906M88 Bolt(61a)	Buy now
4	67C4252500 Plate, friction	Buy now
5	9299006100 Washer(6a1)	Buy now
6	67C42562A0 Shaft, steering lock	Buy now
7	67C4256100 Knob, steering lock	Buy now
8	6894363301 Cover, tilt lever	Buy now
9	9020210M56 Washer, plate	Buy now
10	65W4252800 Plate, friction	Buy now
11	9020910M26 Washer	Buy now
12	9038705053 Collar	Buy now
13	9018510M14 Nut, self-locking	Buy now
14	9038705054 Collar	Buy now
15	9759505520 Bolt, With Washer	Buy now

Steering Friction 3

STEERING FRICTION

Part No.	Applicable model
67C-42508-05	F30B (F30A), F40F(F40A)



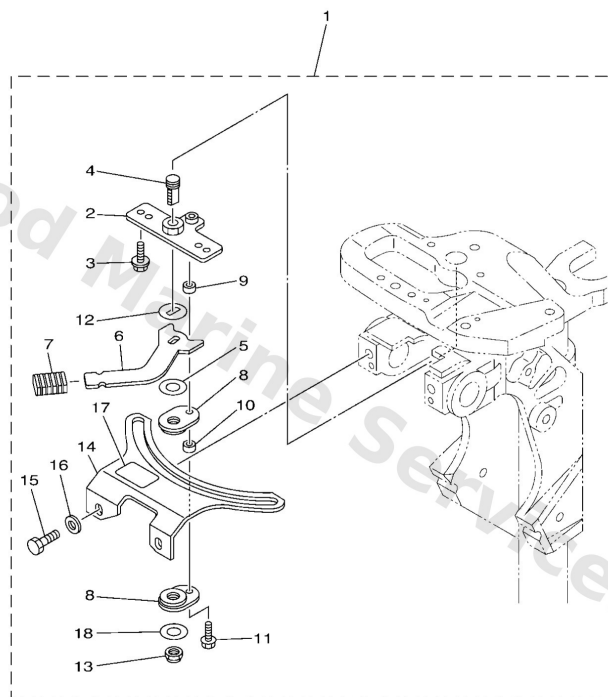
601S10S-V130

Ref	Part	
16	9538005600 Nut, hexagon (663)	Buy now
17	90201106M5 Washer, plate(3gm)	Buy now

Steering Friction 4

STEERING FRICTION

Part No.	Applicable model
6AH-42508-03	F8F(F8B), FT8G, F9 9J(F9 9B), F9 9H, FT9 9L(T9 9B), F15C (F15A), F20B (F20A), F20C
6AH-42508-13	FT9 9L(T9 9B), F15C (F15A), F20B (F20A)



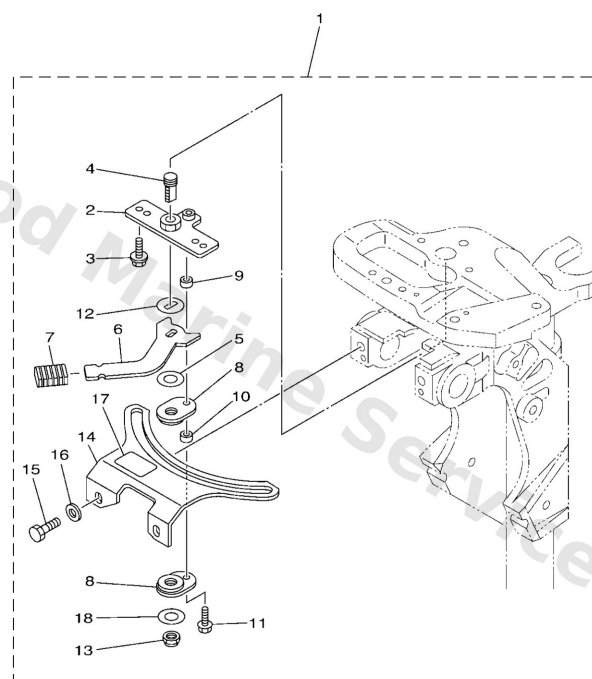
601S10S-V140

Ref	Part	
1	6AH4250803 Steering friction assembly UR	Buy now
1	6AH4250813 Steering friction assembly UR	Buy now
2	68T4252501 Plate, friction	Buy now
3	9011905018 Bolt, with washer	Buy now
4	67C42562A0 Shaft, steering lock	Buy now
5	9020210M56 Washer, plate	Buy now
6	68T4256100 Knob, steering lock	Buy now
7	6894363301 Cover, tilt lever	Buy now
8	65W4252800 Plate, friction	Buy now
9	9038705053 Collar	Buy now
10	9038705054 Collar	Buy now
11	9759505520 Bolt, With Washer	Buy now
12	9020910M26 Washer	Buy now
13	9018510M14 Nut, self-locking	Buy now
14	6AH4252700 Plate, friction	Buy now

Steering Friction 4

STEERING FRICTION

Part No.	Applicable model
6AH-42508-03	F8F(F8B), FT8G, F9.9J(F9.9B), F9.9H, FT9.9L(T9.9B), F15C (F15A), F20B (F20A), F20C
6AH-42508-13	FT9.9L(T9.9B), F15C (F15A), F20B (F20A)



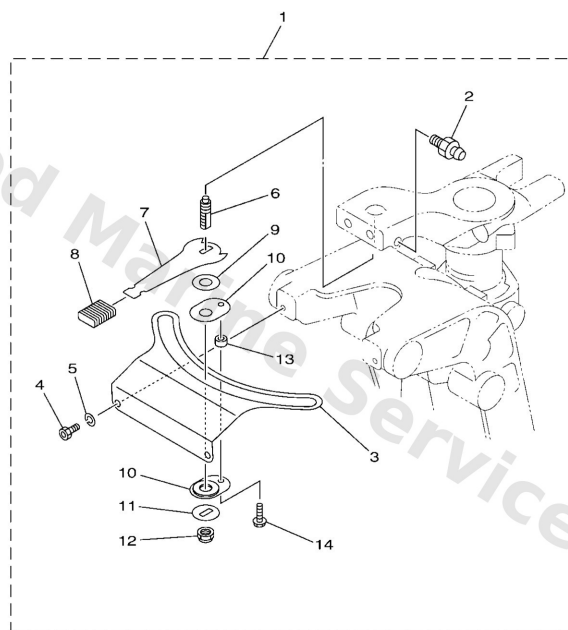

601S10S-V140

Ref	Part	
15	97D9508016 Bolt, hexagon deep recess	Buy now
16	9020108065 Washer, plate	Buy now
17	68T4315500 Mark 1 FOR 6AH-42508-03	Buy now
18	90201106M5 Washer, plate(3gm)	Buy now

Steering Friction 5

STEERING FRICTION

Part No.	Applicable model
65W-42508-01	F25D (F25A), (E)40X



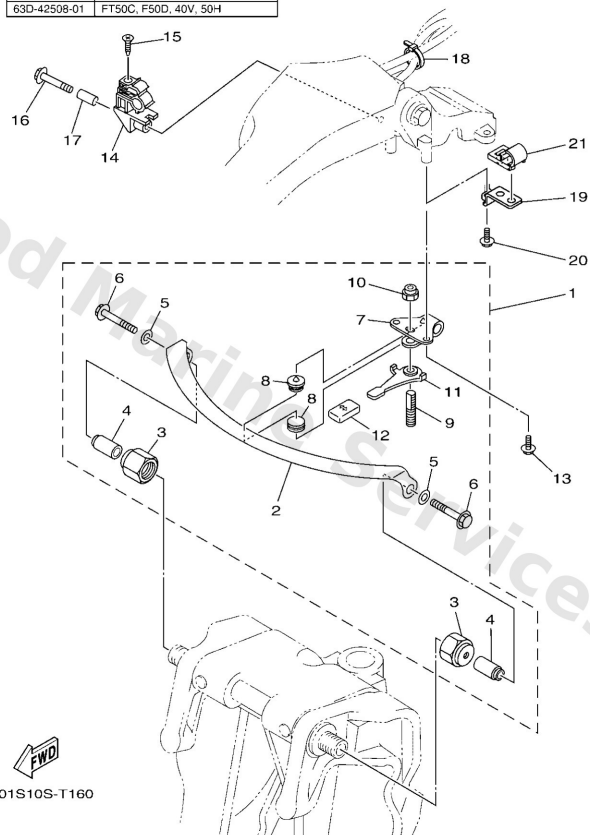

601S10S-V150

Ref	Part	
1	65W4250801 Steering Friction assembly	Buy now
2	9370006M03 Nipple, grease(6a1)	Buy now
3	65W4252700 Plate, friction	Buy now
4	9010906M88 Bolt(61a)	Buy now
5	9299006100 Washer(6a1)	Buy now
6	65W4256200 Shaft, steering lock	Buy now
7	65W4256100 Knob, steering lock	Buy now
8	6894363301 Cover, tilt lever	Buy now
9	9020210M56 Washer, plate	Buy now
10	65W4252800 Plate, friction	Buy now
11	9020910M26 Washer	Buy now
12	9018510M14 Nut, self-locking	Buy now
13	9038705054 Collar	Buy now
14	9010905M89 Bolt, with washer	Buy now

Steering Friction 6

STEERING FRICTION

Part No.	Applicable model
63D-42508-01	FT50C, F50D, 40V, 50H

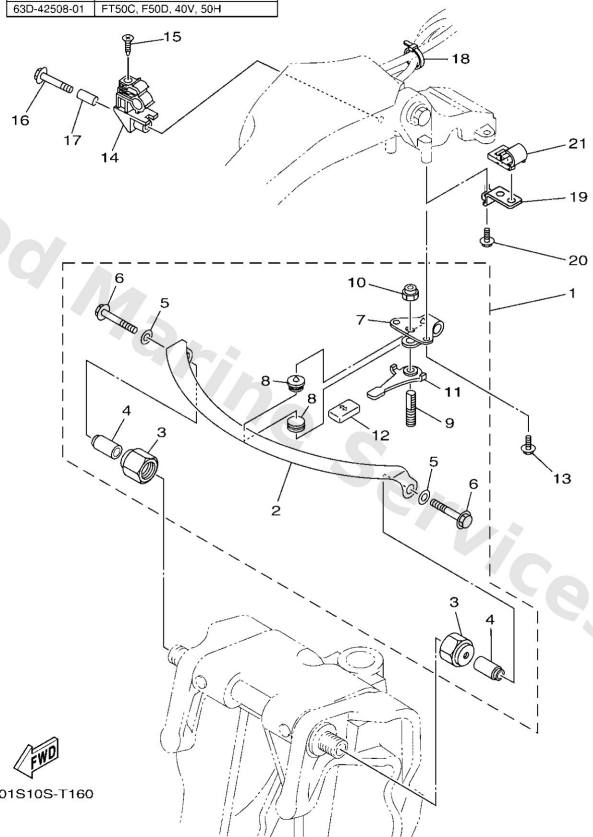


Ref	Part	
1	63D4250801 Steering friction assembly	Buy now
2	63D4252700 Plate, friction	Buy now
3	63D4254600 Nut	Buy now
4	63D4254100 Pipe 1	Buy now
5	9020108M01 Washer, plate(6l2)	Buy now
6	97E9508550 Bolt, hexagon w/w deep recess	Buy now
7	63D4252600 Plate, friction	Buy now
8	63D4252800 Plate, friction	Buy now
9	63D4256200 Steering bracket assembly	Buy now
10	9018510M01 Nut, self-locking(62x)	Buy now
11	63D4256100 Knob, steering lock	Buy now
12	6824331801 Cover	Buy now
13	97E9506516 Bolt, hexagon w/w deep recess	Buy now
14	63D8236100 Clamp, cord	Buy now
15	9016106M00 Screw, tapping(6e7)	Buy now

Steering Friction 6

STEERING FRICTION

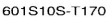
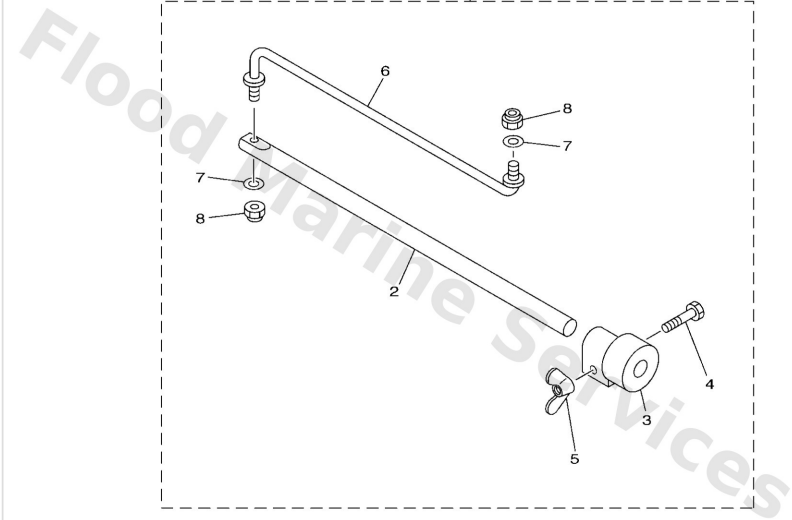
Part No.	Applicable model
63D-42508-01	FT50C, F50D, 40V, 50H



Ref	Part	
16	97E9506535 Bolt, hexagon w/w deep recess	Buy now
17	9038706M26 Collar(61n)	Buy now
18	9046513M36 Clamp(6h4)	Buy now
19	63D2436410 Stay	Buy now
21	63D2436700 Clamp, fuel pipe 2	Buy now

Steering Friction 7

Part No.	Applicable model
692-42508-01	E55D, 60F, 70B

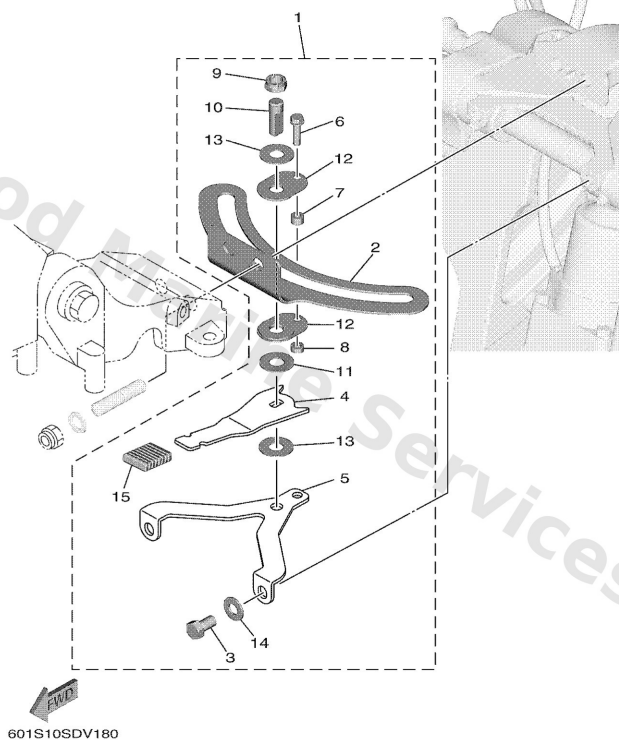


Ref	Part	
1	6924250801 Steering friction assembly	Buy now
2	6634251800 Shaft, friction	Buy now
3	6634252800 Piece, friction	Buy now
4	9708006035 Bolt(j52)	Buy now
5	9017506003 Nut, wing (f87)	Buy now
6	6924251501 Rod, steering link	Buy now
7	9299008600 Washer, plain (663)	Buy now
8	9018508057 Nut, nylon (6j8)	Buy now

Steering Friction 8

STEERING FRICTION

Part No.	Applicable model
6FM-42508-12	F25G(F25C, T25C)

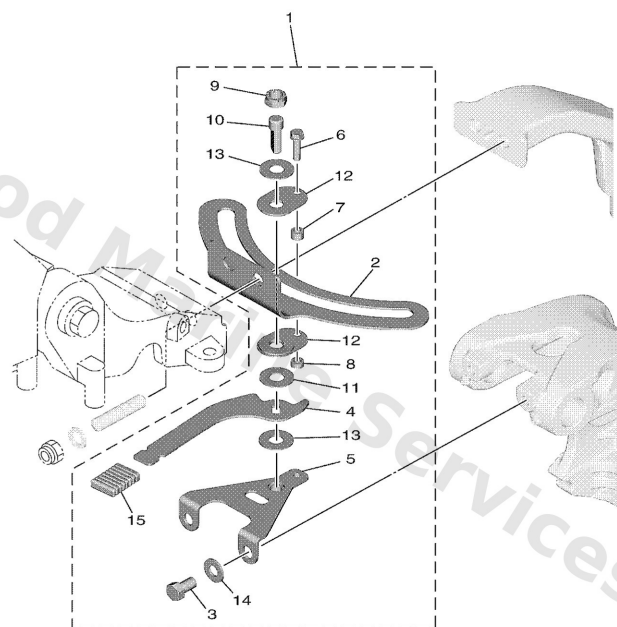


Ref	Part	
1	6FM4250812 Steering friction assembly	Buy now
2	6FM4252700 Plate, friction	Buy now
3	97D9508014 Bolt, hexagon deep recess	Buy now
4	6FM4256110 Knob, steering lock	Buy now
5	6FM4252510 Plate, friction	Buy now
6	9759505520 Bolt, With Washer	Buy now
7	9038705054 Collar	Buy now
8	9038705053 Collar	Buy now
9	9018510M14 Nut, self-locking	Buy now
10	67C42562A0 Shaft, steering lock	Buy now
11	9020210M56 Washer, plate	Buy now
12	65W4252800 Plate, friction	Buy now
13	90201106M5 Washer, plate(3gm)	Buy now
14	9299508200 Ybs66-8 washer, plain	Buy now
15	6894363301 Cover, tilt lever	Buy now

Steering Friction 9

STEERING FRICTION

Part No.	Applicable model
6FM-42508-02	F20G(F20B), F25G(F25C)

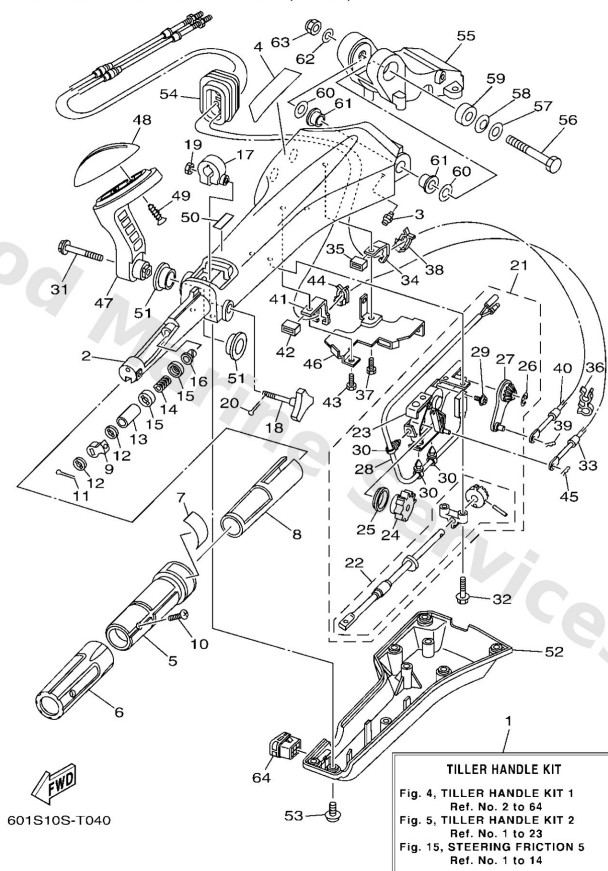


601S10SDV190

Ref	Part	
1	6FM4250802 Steering friction assembly	Buy now
2	6FM4252700 Plate, friction	Buy now
3	97D9508014 Bolt, hexagon deep recess	Buy now
4	6FM4256100 Knob, steering lock	Buy now
5	6FM4252500 Plate, friction	Buy now
6	9759505520 Bolt, With Washer	Buy now
7	9038705054 Collar	Buy now
8	9038705053 Collar	Buy now
9	9018510M14 Nut, self-locking	Buy now
10	67C42562A0 Shaft, steering lock	Buy now
11	9020210M56 Washer, plate	Buy now
12	65W4252800 Plate, friction	Buy now
13	90201106M5 Washer, plate(3gm)	Buy now
14	9299508200 Ybs66-8 washer, plain	Buy now
15	6894363301 Cover, tilt lever	Buy now

Tiller Handle Kit 1

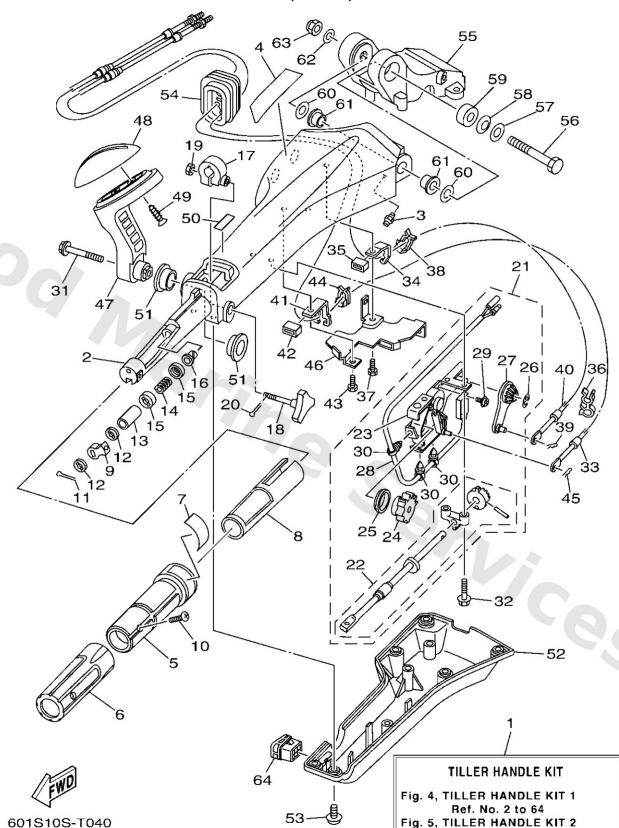
6X4 TILLER HANDLE KIT (F25A)



Ref	Part	
1	6X4421030E F25 tiller handle complete LM FOR USA,CAN	Buy now
2	6X442111024D Handle, steering	Buy now
3	9370006002 Nipple, grease	Buy now
4	6X44821500 Graphic	Buy now
5	6X44211901 Grip, steering handle	Buy now
6	6X44217701 Rubber, handle	Buy now
7	6X44213700 Indicator, throttle	Buy now
8	6X44129100 Bushing	Buy now
9	6X44413901 Collar	Buy now
10	9015205007 Screw, countersunk	Buy now
11	9149020010 Pin, cotter	Buy now
12	6X44417700 Washer	Buy now
13	6X44212800 Collar, distance 1	Buy now
14	9050123215 Spring (655)	Buy now
15	6X44418800 Washer	Buy now

Tiller Handle Kit 1

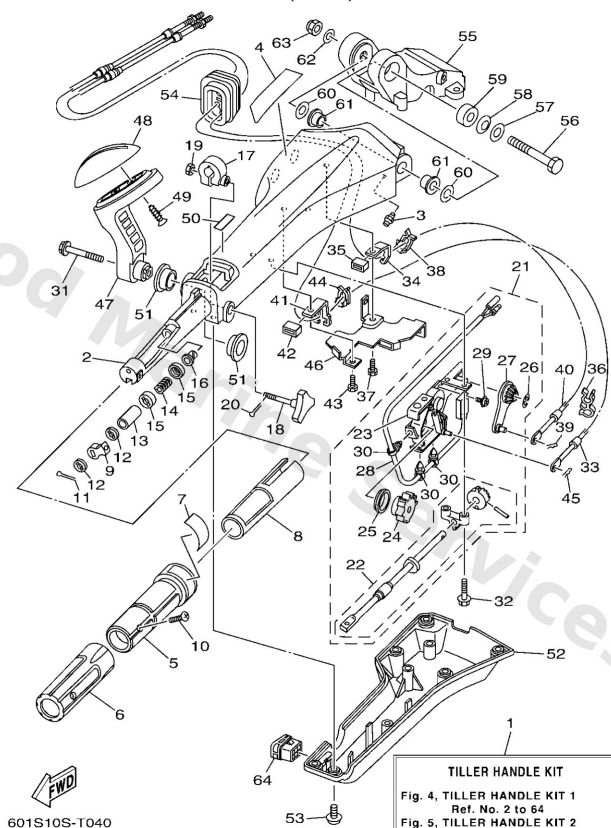
6X4 TILLER HANDLE KIT (F25A)



Ref	Part	
16	9038608032 Bushing (650)	Buy now
17	63D4212600 Friction, steering handle grip	Buy now
18	6X44815400 Knob, throttle	Buy now
19	9538006600 Nut(661)	Buy now
21	6X44410001 Shift link assembly	Buy now
22	6X44211500 Shaft, steering handle	Buy now
23	6X44410200 Shift assist assembly.	Buy now
24	6X44773101 Gear, drive	Buy now
25	6X44413200 Bushing	Buy now
26	6X41413700 Clip	Buy now
27	6X44826100 Arm, throttle	Buy now
28	6X48254000 Neutral switch assembly	Buy now
29	7034812900 Screw 3	Buy now
30	6X44282100 Band, clamp	Buy now
31	97E9508540 Bolt, hexagon w/w deep recess	Buy now

Tiller Handle Kit 1

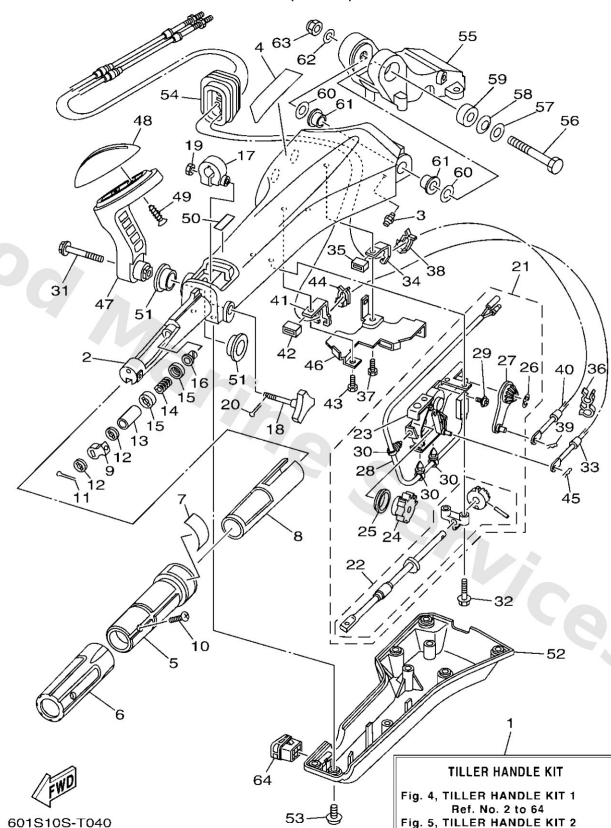
6X4 TILLER HANDLE KIT (F25A)



Ref	Part	
32	97E9506530 Bolt, hexagon w/w deep recess	Buy now
33	6H14832121 Cable	Buy now
34	6X44853800 Clamp, cable 1	Buy now
35	6X42636701 Protector	Buy now
36	9046409M42 Clamp(6b0)	Buy now
37	97D9506014 Bolt, hexagon deep recess	Buy now
38	63D4853800 Clamp, cable 1	Buy now
39	9046810005 Pin, hair 6264123500	Buy now
40	6H34832102 Cable	Buy now
41	6X44853810 Clamp, cable 1	Buy now
46	6X44215900 Stay	Buy now
47	6X444159A08D Handle, gear shift	Buy now
48	6X44417300 Lever, shift control	Buy now
49	9778060920 Screw, tapping	Buy now
50	6G84419100 Indicator, shift	Buy now

Tiller Handle Kit 1

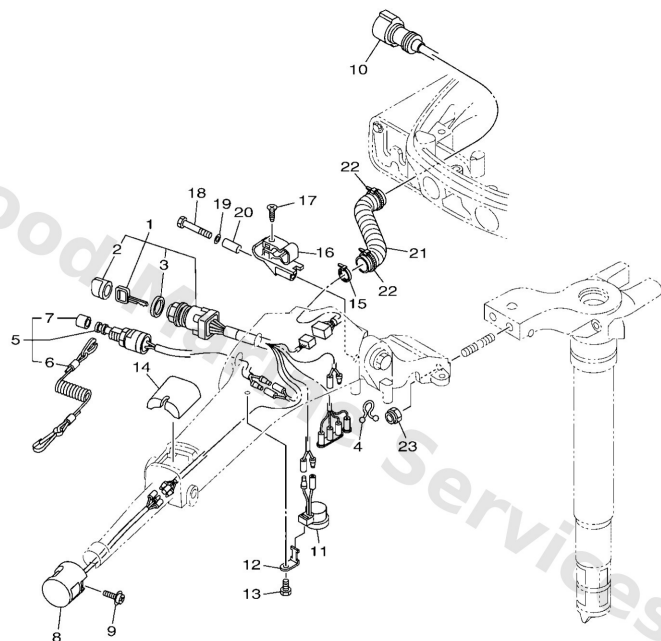
6X4 TILLER HANDLE KIT (F25A)



Ref	Part	
51	9038626MA3 Bush	Buy now
52	6X44213101 Cover, handle steering	Buy now
53	9798506216 Screw, with washer(6h2)	Buy now
54	6X44272501 Grommet	Buy now
55	65W42121114D -	Buy now
56	9010112014 Bolt	Buy now
57	9299012200 Ybs66-12 washer,plain	Buy now
58	9020612M22 Washer, wave(6b0)	Buy now
59	9038712M02 Collar(6b0)	Buy now
60	9020112035 Washer, plate	Buy now
61	9038612003 Bush	Buy now
62	9299012600 Washer, plate(663)	Buy now
63	9018512M12 Nut, self-locking(6e5)	Buy now
64	6X44272810 Cap	Buy now

Tiller Handle Kit 2

6X4 TILLER HANDLE KIT (F25A)

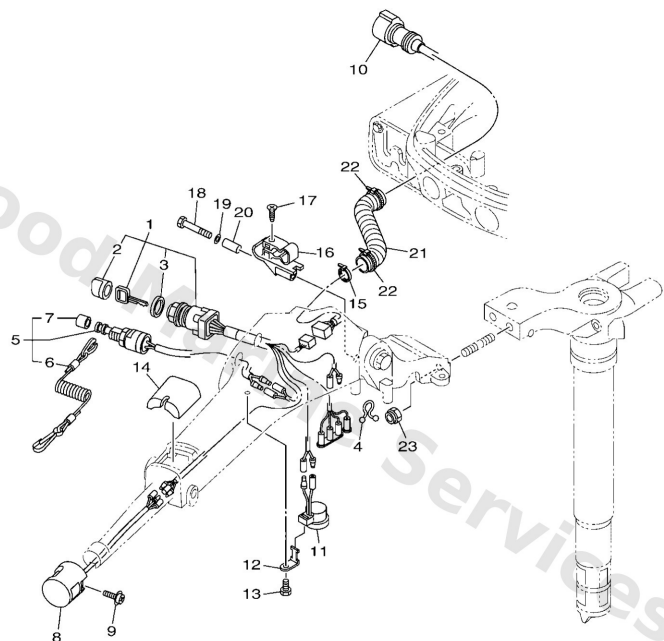



601S10S-T050

Ref	Part	
1	6X48251002 Main switch assembly	Buy now
2	6768257701 Cap, key	Buy now
3	7038253200 Cap	Buy now
4	9046408M07 Clamp	Buy now
5	69W8257500 Engine stop switch assembly	Buy now
6	6828255600 Lanyard, stop switch	Buy now
7	6898257Y00 Cap	Buy now
8	6X48256301 Trim & tilt switch assembly	Buy now
9	9798006216 Screw, with washer(6h2)	Buy now
10	6X48258610 Ext., wire harness (l:950mm)	Buy now
11	6X48338300 Buzzer	Buy now
12	6X48338600 Stay, buzzer	Buy now
13	97D9506014 Bolt, hexagon deep recess	Buy now
14	6X48194201 Cover	Buy now
15	9046513M36 Clamp(6h4)	Buy now

Tiller Handle Kit 2

6X4 TILLER HANDLE KIT (F25A)




601S10S-T050

Ref	Part	
16	62Y8236100 Clamp, cord	Buy now
17	9016106M03 Screw, tapping(6e7)	Buy now
18	97D9506035 Bolt, hexagon deep recess	Buy now
19	9299506600 Washer, plain (646)	Buy now
20	9038706M26 Collar(61n)	Buy now
21	9044722006 -	Buy now
22	9046513M24 Band, switch cord	Buy now
23	9018510027 Nut, self-locking	Buy now

Disclaimer

This document is provided for convenience only. It is **not** an official Yamaha publication and is **not supplied, endorsed, or approved** by Yamaha Motor Co., Ltd.

Reasonable efforts are made to keep information accurate; however diagrams, part references, supersessions, descriptions, and applicability may contain errors or omissions. Specifications and part availability may change without notice.

You are responsible for confirming the correct parts for your engine (including model code, year, serial range, and any superseded part numbers) before ordering or fitting.